



US007523416B2

(12) **United States Patent**  
**Johnson et al.**

(10) **Patent No.:** **US 7,523,416 B2**  
(45) **Date of Patent:** **Apr. 21, 2009**

(54) **NAVIGATION OF AN N-DIMENSIONAL HIERARCHICAL STRUCTURE USING A 2-DIMENSIONAL CONTROLLER**

6,907,575 B2 \* 6/2005 Duarte ..... 715/784  
2004/0090423 A1 \* 5/2004 Bisset ..... 345/169  
2005/0009571 A1 \* 1/2005 Chiam et al. .... 455/566  
2006/0164389 A1 \* 7/2006 Ringot ..... 345/157

(75) Inventors: **Eric Johnson**, Ottawa (CA); **Ronald Anthony Dicke**, Ottawa (CA)

**FOREIGN PATENT DOCUMENTS**

(73) Assignee: **Research In Motion Limited**, Waterloo, Ontario (CA)

EP 0 947 921 A 10/1999  
EP 1 333 362 A1 8/2003  
WO 98/37694 A 8/1998  
WO 00/25198 A 5/2000  
WO WO 0205079 A2 1/2002  
WO WO 02097597 A1 12/2002

(\* ) Notice: Subject to any disclaimer, the term of this patent is extended or adjusted under 35 U.S.C. 154(b) by 333 days.

**OTHER PUBLICATIONS**

(21) Appl. No.: **11/127,720**

3100 Installation Instructions and User manual 1066173100 Bell ExpressVu User Guide Rev. May 2001 Copyright 2001, Bell ExpressVu L.P., North York, ON, M7B 2R2, Canada.

(22) Filed: **May 12, 2005**

\* cited by examiner

**Prior Publication Data**

*Primary Examiner*—Weilun Lo  
*Assistant Examiner*—Rashedul Hassan  
(74) *Attorney, Agent, or Firm*—David C. Jenkins; Brij K. Agarwal; Eckert Seamans Cherin & Mellott, LLC

US 2005/0268253 A1 Dec. 1, 2005

**Related U.S. Application Data**

(60) Provisional application No. 60/570,066, filed on May 12, 2004.

(57) **ABSTRACT**

(51) **Int. Cl.**

**G06F 3/048** (2006.01)

(52) **U.S. Cl.** ..... **715/810; 715/854; 715/818; 715/841; 715/850; 715/784**

(58) **Field of Classification Search** ..... **715/810, 715/854, 784, 818, 841, 850**  
See application file for complete search history.

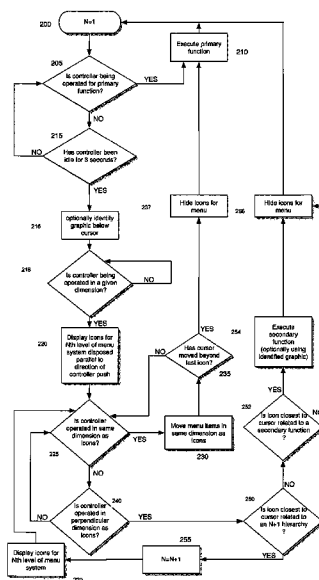
A system and method for navigating a multi-hierarchical menu system using a two-dimensional controller, comprising displaying an N<sup>th</sup> level of the multi-hierarchical menu system having a plurality of icons in proximity to a pointer on a portion of a display, scrolling the icons in a first dimension relative to the pointer responsive to operating the controller in the first dimension, and one of either selecting one of the icons in closest proximity to the pointer responsive to operating the controller in a first direction of a second dimension, or displaying a N+1<sup>th</sup> level of the multi-hierarchical menu system relative to one of the icons in closest proximity to the pointer responsive to operating the controller in an opposite direction of the second dimension.

(56) **References Cited**

**U.S. PATENT DOCUMENTS**

5,948,040 A \* 9/1999 DeLorme et al. .... 701/201  
6,037,936 A \* 3/2000 Ellenby et al. .... 715/764  
6,266,098 B1 7/2001 Cove et al.  
6,396,475 B1 \* 5/2002 Ellenby et al. .... 345/156

**36 Claims, 4 Drawing Sheets**



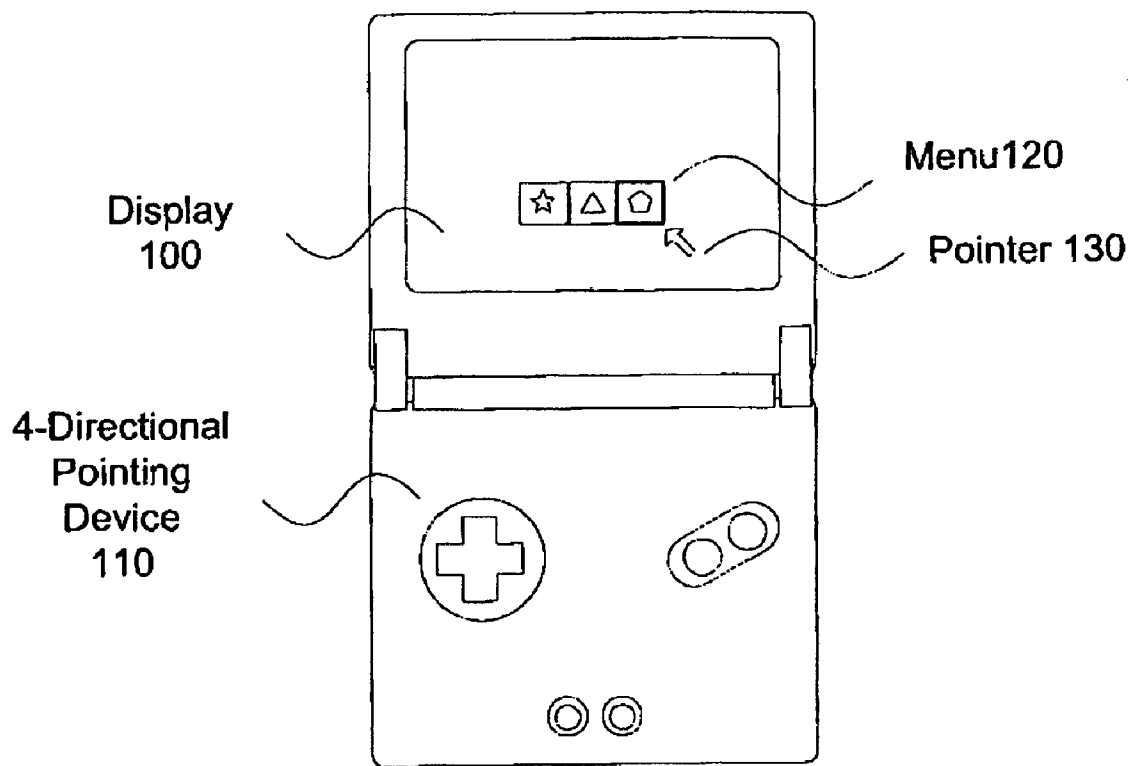


Fig. 1



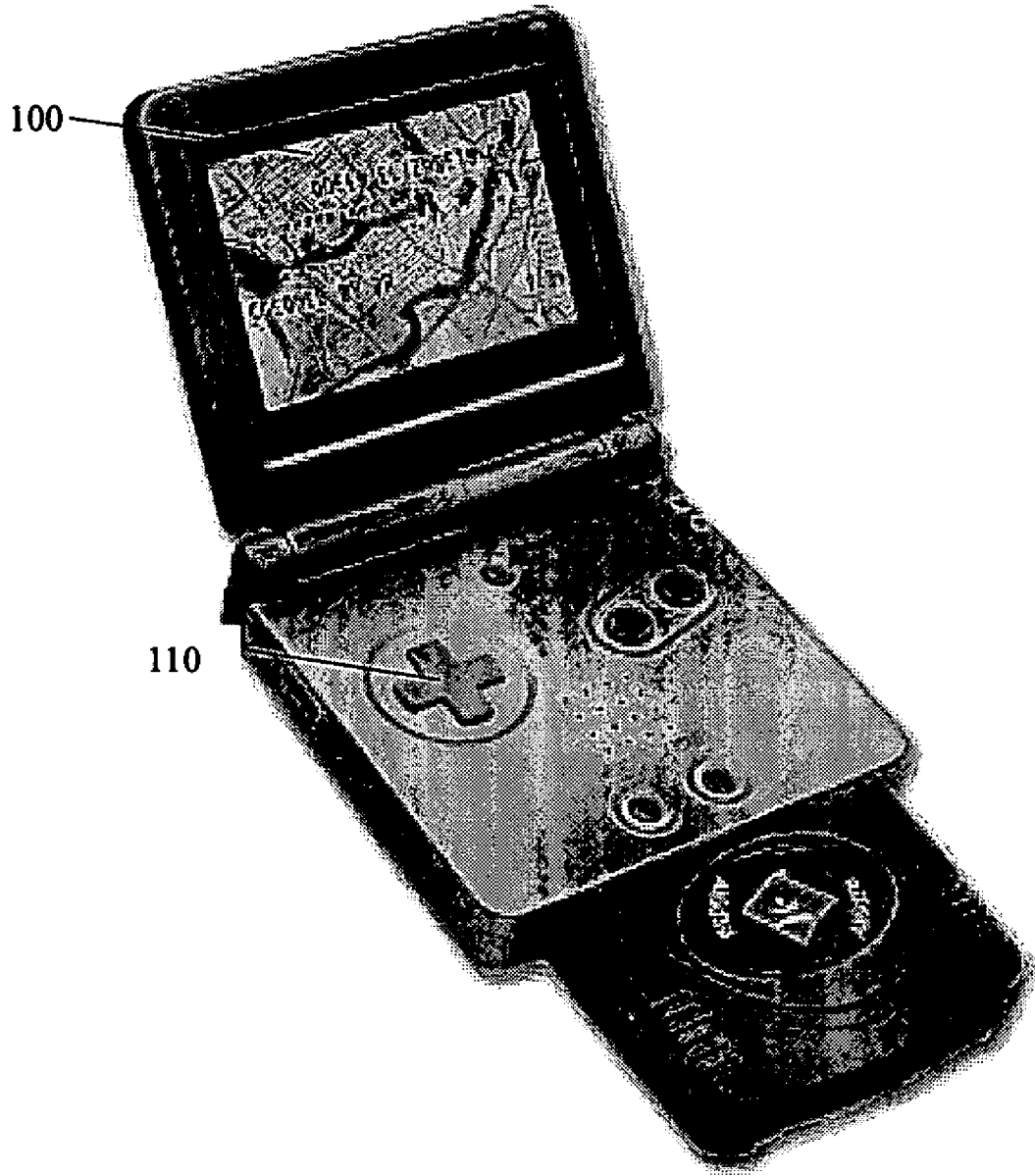


Fig 3A

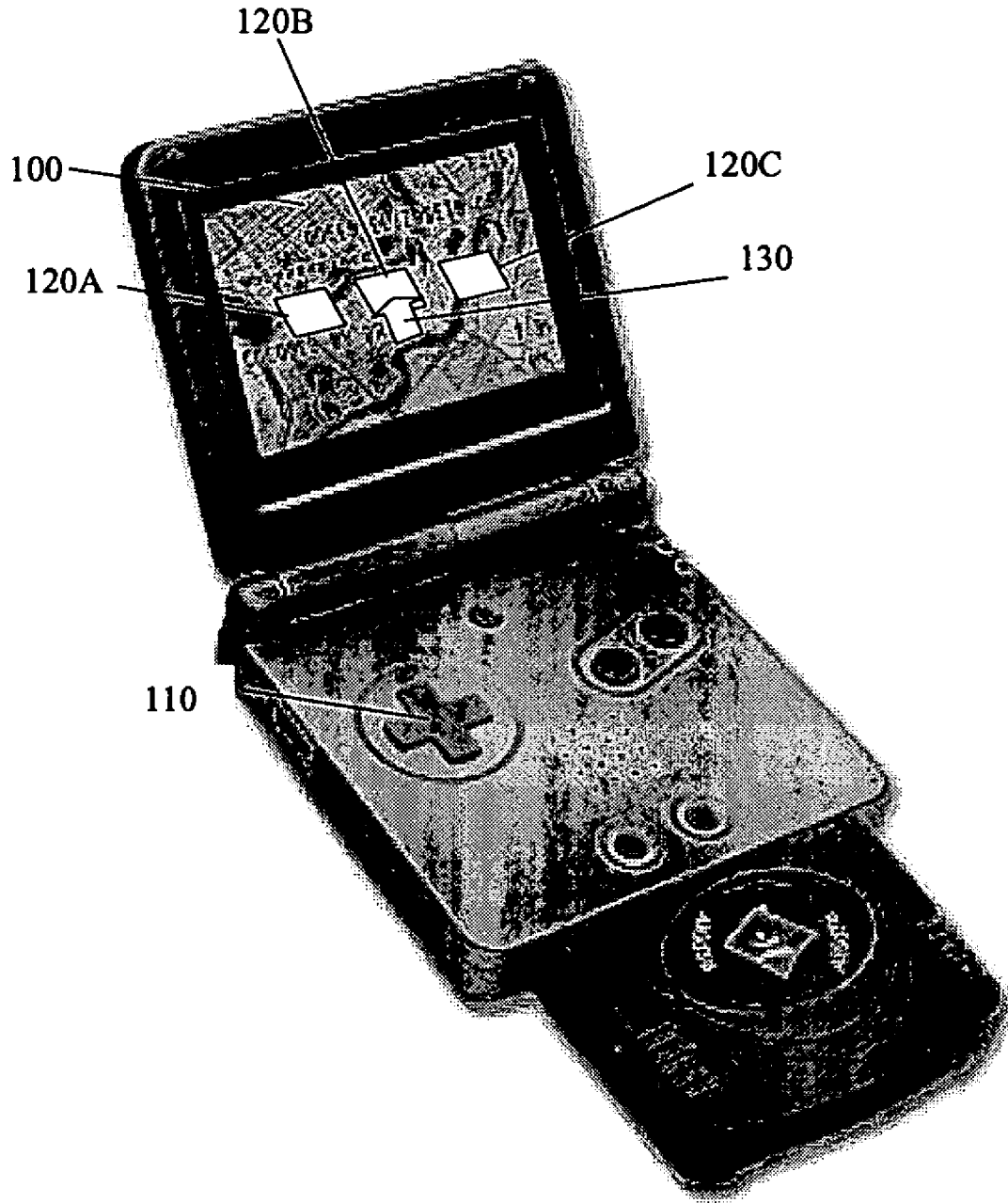


Fig 3B

# NAVIGATION OF AN N-DIMENSIONAL HIERARCHICAL STRUCTURE USING A 2-DIMENSIONAL CONTROLLER

## CROSS-REFERENCE TO RELATED APPLICATION

The present application claims priority from U.S. Provisional Application Ser. No. 60/570,066 file May 12, 2004, the disclosures of which are incorporated herein.

## BACKGROUND

### 1. Field

The present specification is directed generally to the navigation of a graphical user interface (GUI), and more particularly to the navigation of a multi-hierarchical menu system using a two-dimensional controller.

### 2. Description of the Related Art

In a typical GUI, a user is provided with a system of hierarchical menus that must be navigated using a mouse or other pointing device (e.g. trackball, digitizing tablet, directional keypad, etc.). Although such menu system navigation is relatively straightforward when using a conventional desktop or laptop computer, significant impediments to usage arise when the GUI operates on a small electronic apparatus, such as a wireless communication device and/or GPS receiver, where space limitations dictate use of a pointing device with limited directional control (e.g. a 4-directional cross-shaped keypad or a five-way selector on wireless communication device). Moreover, the presentation of layered hierarchical menus on such a device may detract from its primary use and limit interaction with the device (e.g. where the device is a GPS receiver, the presentation of layered hierarchical menus tends to clutter the display of map information, interfere with pan functions, etc.).

## BRIEF DESCRIPTION OF THE DRAWINGS

FIG. 1 is an illustration of an electronic device with limited display area and two-dimensional controller;

FIG. 2 depicts a flowchart illustrating a method for navigating a multi-hierarchical menu system of the electronic device, according to the preferred embodiment; and

FIGS. 3A and 3B, together, illustrate various screens of a graphical user interface (GUI) implementing the method of FIG. 2.

## DETAILED DESCRIPTION OF THE PREFERRED EMBODIMENTS

It is an aspect of the present specification to set forth a system and method for navigating a multi-hierarchical menu system of an electronic device with limited display area using a two-dimensional controller, such as a four-directional cross-shaped control pad or other limited input device.

To that end, a system and method are provided for navigating an N-dimensional hierarchical menu structure using a two-dimensional controller, by displaying a  $N^{th}$  level of the hierarchical menu structure in proximity to a pointer on a portion of a display by operating the controller in a first dimension, and one of either selecting a function related to an icon within the Nth level or displaying a  $(N+1)^{th}$  level of the hierarchical menu structure by operating the controller in a second dimension perpendicular to the first dimension, or

moving the Nth level of the hierarchical menu structure relative to the pointer by operating the controller in the first dimension.

According to another aspect, the menu system may be navigated without interfering with a primary function of the electronic device. To that end, the menu system may be activated only after a predetermined period of primary function inactivity. For example, where the primary function is panning of a map navigation system, the menu system may be automatically displayed after a time-out period after the user ceases to operate the controller for the purpose of panning. Furthermore, after the timeout period, but before displaying the menu, the direction of controller operation can be advantageously used to direct the relative location and orientation of the menu on the display so as to minimize interference with the display.

These together with other aspects and advantages which will be subsequently apparent, reside in the details of construction and operation as more fully hereinafter described and claimed, reference being had to the accompanying drawings forming a part hereof, wherein like numerals refer to like parts throughout.

In FIG. 1, an electronic device is shown with limited area display **100** and a two-dimensional (i.e. four-directional) controller **110**. The device incorporates a processor for implementing at least a primary function, as is well known in the art. A graphical user interface (GUI) is presented to the user as a first level of a hierarchical menu **120** having a plurality of icons selectable via a pointer **130**. The term "icon", as used in the specification means any graphic representation on the display representing a function that can be selected by operating the controller **110**. As discussed in greater detail below, the icons of menu **120** are navigable by operating the controller in a first dimension (e.g. left or right buttons, where the dimension is horizontal), thereby causing the menu **120** to move in the first dimension relative to pointer **130**. A second level of the hierarchical menu (not shown) may be displayed by operating the controller in the first direction of a second dimension (e.g. the down button, where the dimension is vertical), or the icon may be selected by operating the controller in the opposite direction of the second dimension (e.g. the up button).

Turning to FIG. 2, an index (N) representing the level of menu hierarchy is initially set to 1 (step **200**). In operation a user operates the controller **110** (step **205**) to execute the afore-noted primary function of the device (step **210**). For example, where the device **110** incorporates a GPS receiver, the primary function may be panning of a map navigation system. FIG. 3A shows the device **110** executing the primary function of panning a map. It will be noted that no icons **120** are displayed. By depressing and holding the controller **110** in one of its four directions (within two dimensions), the map depicted in display **100** is caused to pan in the direction that the device **110** is being pressed (i.e. up, down, left or right). As long as the controller **110** continues to be operated by the user, the primary function persists (step **210**).

If the user releases the controller **110**, the primary function (e.g. map panning) ceases, and the display **100** remains static for a predetermined time-out period (step **215**). Although as illustrated the timeout period is 3 seconds, it is envisaged that those of ordinary skill in the art can use other timeout periods to adapt FIG. 2 to a particular purpose. Next, graphics (such as streets, lakes, or other map features in a map application for example) are (optionally) identified (step **216**) and a software control loop is entered to detect operation of the controller **110** in any dimension (step **218**). Upon detection of controller operation, the first level (N=1) of the hierarchical menu is

presented to the user (step 220), with the icons 120 displayed parallel to the direction of controller movement (detected at step 218). This advantageously enables the user to affect the position and orientation of the menu over the background display, to ensure for example that a select area of the display (showing an area of interest in a map for example) remains uncluttered by the menu. As shown in FIG. 3B, icons 120A, 120B and 120C are displayed over the background image (e.g. a map). Preferably, the icons 120 are context sensitive to the state of the device display. For purposes of clarity, the icons in FIG. 3B are shown as blank boxes, without graphics. However, preferably the icons depict graphics that are, as indicated above, context sensitive and indicative of a function to be performed. For example, icon 120A may depict a graphical image of binoculars for initiating a search function, icon 120B may depict a push-pin for entering a GPS waypoint, and icon 120C may depict a 'U-turn' graphic for causing the map to return to the GPS current location.

In response to the user operating the controller 110 in the same dimension (step 225) as the icons 120 are displayed (i.e. left or right, in FIG. 3B), the icons 120 are caused to move (left or right) relative to the pointer 130 (step 230). However, if the icons 120 are caused to move past the pointer 130 (step 235), the icons 120 are hidden from the display 100 (step 237) device execution reverts to the primary function (step 210).

Of course, rather than being displayed horizontally, as shown in FIG. 3B, the icons 120 may be displayed vertically in which case operation of the controller 110 up or down causes the icons 120 to move vertically relative to the pointer 130.

In response to the user operating the controller 110 (step 240) in a direction perpendicular to the presentation of the icons 120 (i.e. up or down in FIG. 3B), the icon closest to pointer 130 may be selected. More particularly, the closest icon may be selected to perform a specific function associated with the icon, or to display a next (N+1) level of menu selection. Thus, at step 250 a determination is made as to whether the icon closest to cursor 130 relates to the next (i.e. deeper) menu level. If not, then a determination is made (step 252) as to whether the icon closest to cursor 130 relates to a secondary function. If a determination is made (step 252) that the icon closest to cursor 130 relates to a secondary function, then the secondary function is executed (step 254), the icons 120 are hidden from the display 100 (step 256), and process control returns to step 200. For example, in FIG. 3B icon 120B (push-pin) is closest to pointer 130, such that a waypoint entry function may be selected by depressing the 'up' button of controller 110. The waypoint and position return functions implemented by selecting icons 120B or 120C, respectively, do not form part of the present invention but would be known to a person of skill in the art.

If, on the other hand the icon closest to cursor 130 relates to the next (i.e. deeper) menu level (a YES at step 250), then the index N is incremented (step 255) and the second level (N=2) of the hierarchical menu is displayed (step 220) revealing a new set of selectable icons related to the icon closest to pointer 130. Process flow then returns to step 225. Thus, for the search function (icon 120A) discussed above, the next menu level may consist of three further icons 120A, 120B and 120C. The second-level icon 120A may represent a 'filter' function to search between features currently in-view on the display 100 or 'world' features outside of the display area. The second-level icon 120B may represent a 'category' function to search for features based on category (e.g. hospitals, parks, lakes, major highways, secondary highways, etc.). The second-level icon 120C may represent an 'index' function to facilitate searching through an alphabetical list using fine and

coarse-grained controls, as set forth for example in a PCT application filed at the Canadian Receiving Office on Mar. 11, 2005, by Redsky Mobile Inc., entitled Restricted User Interface Navigation.

Of course, rather than representing search, waypoint and location return functions, as set forth above, the icons 120 may represent any context-sensitive functions or features. For example, if the pointer 130 is adjacent an area of interest (e.g. a restaurant) after a period of controller inactivity following panning of the map (a YES decision at step 215), the icons 120 for the first level of the menu may represent user functions associated with the area of interest. Thus, where the device is a wireless communications device with GPS functionality, icon 120A may represent, for example, a restaurant menu, icon 120B may initiate a wireless phone call to the restaurant (e.g. to make a reservation), and 120C may, as before, depict a 'U-turn' graphic for causing the map to return to the GPS current location. A person of skill in the art will appreciate that there are numerous context-sensitive functions and menu hierarchies, all of which are navigable using the methodology presented herein.

Therefore, as set for the herein, a user is able, by simple operation of the two-dimensional controller 110, to navigate multiple (i.e. nested) levels of a hierarchical menu system and to select or initiate specific context-sensitive functions with only one hand. Moreover, the menu system may be navigated without interfering with a primary function of the electronic device.

The present specification describes an implementation that employs GPS positioning. As discussed above, the principles set forth herein are not restricted to GPS-enabled devices (or any other location-enabled devices, such as cellular devices with location determined via triangulation, Bluetooth or other short-range location-enabled devices, etc.). Rather, this specification is directed to a system and method for navigating hierarchical menu systems with a two-dimensional controller, irrespective of the application. It is envisaged that a person of ordinary skill in the art, in view of the present specification and drawings, could adapt the present techniques to operate with other controllers than a two-dimensional controller. For example, a roller wheel and an auxiliary input could be combined to provide a two-dimensional controller whereby when the roller wheel is actuated independent of the auxiliary input the roller wheel controls one dimension, and when the roller wheel is actuated in conjunction with the auxiliary input the roller wheel controls another dimension. Such adaptations fall within the contemplated scope of the techniques taught by this specification and drawings.

Many features and advantages will be apparent from this specification and, thus, it is intended by the appended claims to cover all such features and advantages. Further, since numerous modifications and changes will readily occur to those skilled in the art, it is not desired to impose any limit to the exact construction and operation illustrated and described herein, and accordingly all suitable modifications and equivalents may be resorted to, falling within the scope of the claims.

What is claimed is:

1. A method for navigating a multi-hierarchical menu system using a two-dimensional controller, comprising:
  - detecting a dimension of initial operation of said two-dimensional controller;
  - displaying responsive to said detection topmost level of said multi-hierarchical menu system having a plurality of icons in proximity to a pointer on a portion of a display, said icons being displayed over a background image and horizontally if said detected dimension of

5

initial operation of said two-dimensional controller is horizontal and vertically if said detected dimension of initial operation of said two-dimensional controller is vertical;

scrolling said icons in a first dimension relative to said pointer responsive to operating said controller in said first dimension; and

selecting one of said icons responsive to operating said controller in a second dimension.

2. The method of claim 1, wherein said selecting initiates one of either execution of a function associated with said one of said icons or displaying a next level of said multi-hierarchical menu system associated with said one of said icons.

3. The method of claim 1, wherein said second dimension is perpendicular to said first dimension.

4. The method of claim 1, wherein said topmost level of said multi-hierarchical menu system is displayed following a predetermined period of inactivity of said controller.

5. The method of claim 1, wherein said icons represent context-sensitive functions.

6. The method of claim 5, wherein said context-sensitive functions include at least one of searching for information relating to a feature of interest in proximity to said pointer, setting a location waypoint, and returning to a current location.

7. The method of claim 2, wherein said next level of said multi-hierarchical menu system includes a plurality of additional icons representing further functions related to said one of said icons.

8. The method of claim 7, wherein said further functions include at least one of a filter function to search between features currently in-view on said display and features outside of the display area, a category function to search for features based on categories, and an index function to facilitate searching through an alphabetical list using fine and coarse-grained controls.

9. The method of claim 1, further comprising ceasing display of said multi-hierarchical menu system responsive to scrolling said icons beyond a last one of said icons.

10. A system for navigating a multi-hierarchical menu system of a device having a primary function, comprising:

a display;

a two-dimensional controller for facilitating control of said primary function, whereupon results of said primary function are presented on said display; and

a processor for (i) executing said primary function, (ii) detecting a dimension of initial operation of said two-dimensional controller, (iii) causing display responsive to said detection of an topmost level of said multi-hierarchical menu system having a plurality of icons in proximity to a pointer on a portion of a display, said icons being displayed over a background image and horizontally if said detected dimension of initial operation of said two-dimensional controller “is horizontal and vertically if said detected dimension of initial operation of said two-dimensional controller is vertical”, (iv) scrolling said icons in a first dimension relative to said pointer responsive to operating said controller in said first dimension, and (v) selecting one of said icons responsive to operating said controller in a second dimension.

11. The system of claim 10, wherein said processor selectively initiates one of either execution of a function associated with said one of said icons or displaying a next level of said multi-hierarchical menu system associated with said one of said icons.

6

12. The system of claim 10, wherein said second dimension is perpendicular to said first dimension.

13. The system of claim 10, wherein said processor causes display of said topmost level of said multi-hierarchical menu system following a predetermined period of inactivity of said controller.

14. The system of claim 10, wherein said icons represent context-sensitive functions.

15. The system of claim 14, wherein said context-sensitive functions include at least one of searching for information relating to an area of interest in proximity to said pointer, setting a location waypoint, and returning to a current location.

16. The system of claim 11, wherein said next level of said multi-hierarchical menu system includes a plurality of additional icons representing further functions related to said one of said icons.

17. The system of claim 16, wherein said further functions include at least one of a filter function to search between features currently in-view on said display and features outside of the display area, a category function to search for features based on categories, and an index function to facilitate searching through an alphabetical list using fine and coarse-grained controls.

18. The system of claim 10, wherein said controller ceases display of said multi-hierarchical menu system responsive to scrolling said icons beyond a last one of said icons.

19. A method for navigating a multi-hierarchical menu system using a two-dimensional controller, comprising:

detecting a dimension of initial operation of said two-dimensional controller;

displaying responsive to said detection topmost level of said multi-hierarchical menu system having a plurality of icons in proximity to a pointer on a portion of a display, said icons being displayed over a background image and horizontally if said detected dimension of initial operation of said two-dimensional controller “is horizontal and vertically if said detected dimension of initial operation of said two-dimensional controller is vertical”;

scrolling said icons in a first dimension relative to said pointer responsive to operating said controller in said first dimension; and

selecting one of said icons in closest proximity to said pointer responsive to operating said controller in a second dimension.

20. The method of claim 19, wherein said selecting initiates one of either execution of a function associated with said one of said icons or displaying a next level of said multi-hierarchical menu system associated with said one of said icons.

21. The method of claim 19, wherein said second dimension is perpendicular to said first dimension.

22. The method of claim 19, wherein said topmost level of said multi-hierarchical menu system is displayed following a predetermined period of inactivity of said controller.

23. The method of claim 19, wherein said icons represent context-sensitive functions.

24. The method of claim 23, wherein said context-sensitive functions include at least one of searching for information relating to a feature of interest in proximity to said pointer, setting a location waypoint, and returning to a current location.

25. The method of claim 20, wherein said next level of said multi-hierarchical menu system includes a plurality of additional icons representing further functions related to said one of said icons in closest proximity to said pointer.



26. The method of claim 25, wherein said further functions include at least one of a filter function to search between features currently in-view on said display features outside of the display area, a category function to search for features based on categories, and an index function to facilitate searching through an alphabetical list using fine and coarse-grained controls.

27. The method of claim 19, further comprising ceasing display of said multi-hierarchical menu system responsive to scrolling said icons beyond a last one of said icons.

28. A system for navigating a multi-hierarchical menu system of a device having a primary function, comprising:

a display;

a two-dimensional controller for facilitating control of said primary function, whereupon results of said primary function are presented on said display; and

a processor for (i) executing said primary function, (ii) detecting a dimension of initial operation of said two-dimensional controller (iii) causing display responsive to said detection of topmost level of said multi-hierarchical menu system having a plurality of icons in proximity to a pointer on a portion of a display, said icons being displayed over a background image and horizontally if said detected dimension of initial operation of said two-dimensional controller “is horizontal and vertically if said detected dimension of initial operation of said two-dimensional controller is vertical”, (iv) scrolling said icons in a first dimension relative to said pointer responsive to operating said controller in said first dimension, and (v) selecting one of said icons in closest proximity to said pointer responsive to operating said controller in a second dimension.

29. The system of claim 28, wherein said processor selectively initiates one of either execution of a function associated with said one of said icons or displaying a next level of said multi-hierarchical menu system associated with said one of said icons.

30. The method of claim 28, wherein said second dimension is perpendicular to said first dimension.

31. The system of claim 28, wherein said processor causes display of said topmost level of said multi-hierarchical menu system following a predetermined period of inactivity of said controller.

32. The system of 28, wherein said icons represent context-sensitive functions.

33. The system of claim 32, wherein said context-sensitive functions include at least one of searching for information relating to an area of interest in proximity to said pointer, setting a location waypoint, and returning to a current location.

34. The system of claim 29, wherein said next level of said multi-hierarchical menu system includes a plurality of additional icons representing further functions related to said one of said icons in closest proximity to said pointer.

35. The system of claim 34, wherein said further functions include at least one of a filter function to search between features currently in-view on said display features outside of the display area, a category function to search for features based on categories, and an index function to facilitate searching through an alphabetical list using fine and coarse-grained controls.

36. The system of claim 28, wherein said controller ceases display of said multi-hierarchical menu system responsive to scrolling said icons beyond a last one of said icons.

\* \* \* \* \*

UNITED STATES PATENT AND TRADEMARK OFFICE  
**CERTIFICATE OF CORRECTION**

PATENT NO. : 7,523,416 B2  
APPLICATION NO. : 11/127720  
DATED : April 21, 2009  
INVENTOR(S) : Johnson et al.

Page 1 of 1

It is certified that error appears in the above-identified patent and that said Letters Patent is hereby corrected as shown below:

In column 4, line 22, delete “for the” and insert -- forth --

In column 5, line 55 claim 10, delete ““is” and insert -- is --

In column 5, line 57 claim 10, delete “vertical” and insert -- vertical --

In column 6, line 37 claim 19, delete ““is” and insert -- is --

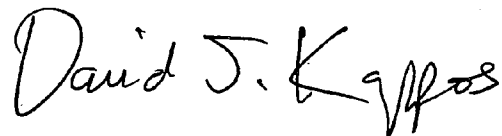
In column 6, line 40 claim 19, delete “vertical” and insert -- vertical --

In column 7, line 26 claim 28, delete ““is” and insert -- is --

In column 7, line 28 claim 28, delete “vertical” and insert -- vertical --

Signed and Sealed this

Twenty-second Day of June, 2010



David J. Kappos  
*Director of the United States Patent and Trademark Office*