

VSC - 1 USER MANUAL AND INSTALLATION GUIDE



Product Description:

The VSC - 1 (Variable Sound Controller) is a direct plug-in remote controller designed to allow tuning of your vehicle's exhaust sound at any time with the push of a button. The controller mounts directly to the valve actuator motor, located near the muffler. Installation is shown on the CG Precision VS - 1 exhaust system for the BMW F20/F21/F22/F30/F32 M135i/M235i/335i/435i. The VSC - 1 package includes:

QTY 1: VSC - 1 controller unit

QTY 1: Powder coated mounting bracket

QTY 2: Remote control key fob

Product Applications:

The VSC-1 was designed to vary the sound on any M135i, M235i, 335i (ix) and 435i (ix) equipped with the factory BMW electronic exhaust valve actuator. When used with the CG Precision VS-1 exhaust system, it provides an aggressive and exotic exhaust note while open, and a sporty, less aggressive sound while closed. The VSC-1 can be used on the following exhaust systems:

<u>BMW 2012+ 335i (ix) Sedan</u>	<u>BMW 2013+ 435i (ix) Coupe</u>
<u>BMW 2014+ M135i</u>	<u>BMW 2014+ M235i</u>
CG Precision VS-1 exhaust	
Factory BMW exhaust	
BMW M-Sport exhaust	
Other aftermarket exhaust systems	

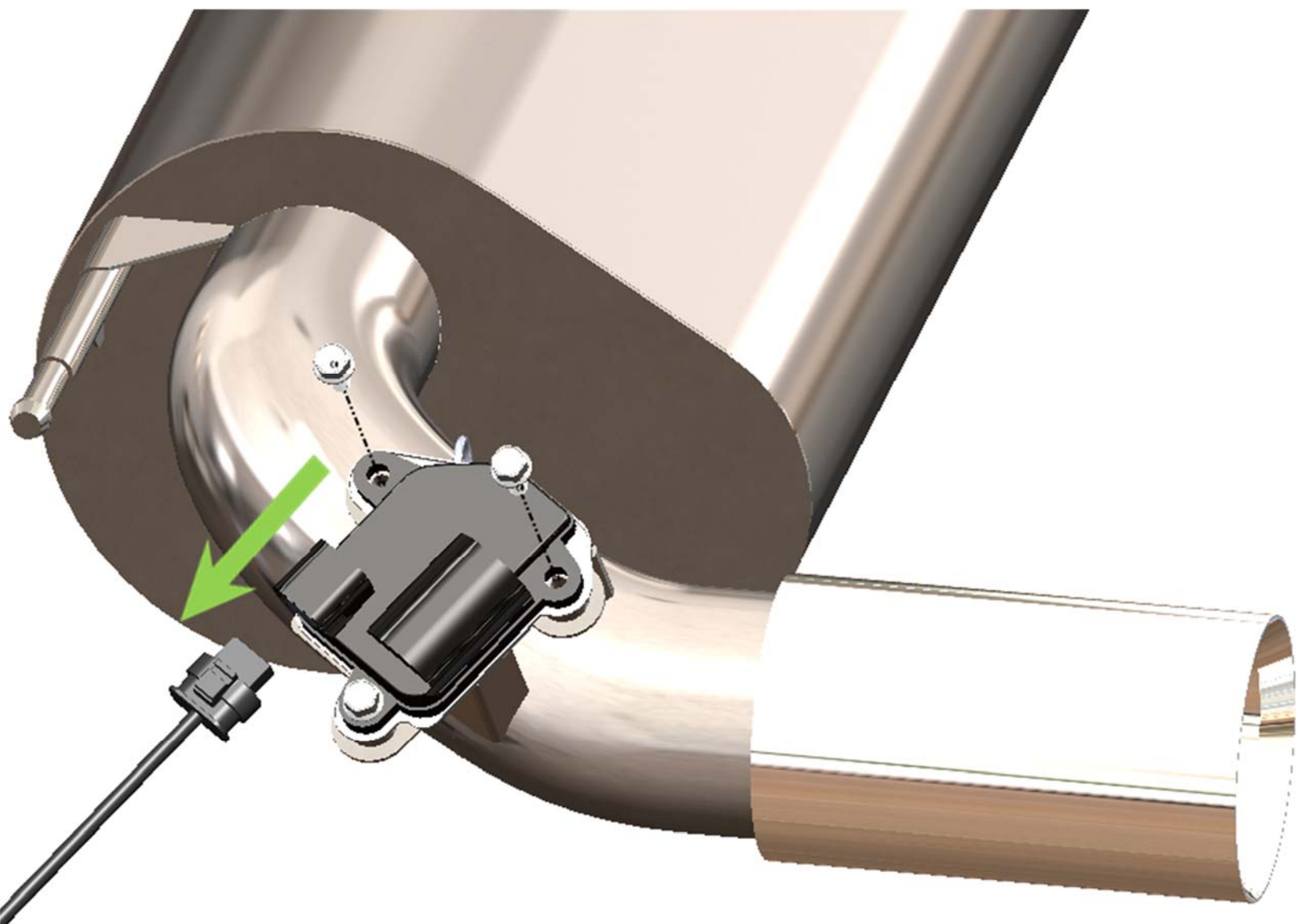
Proper Use:

- Use of the VSC-1 will automatically default the exhaust valve to the open position on every startup.
- Close the exhaust valve by briefly pressing the “On” button
- Open the exhaust valve by briefly pressing the “Off” button
- To start the car with the exhaust valve closed, turn the vehicle power on without starting the engine. Press the “On” button to close the valve. You will hear the exhaust valve actuate within 1-2 seconds. Start the engine.

Installation:

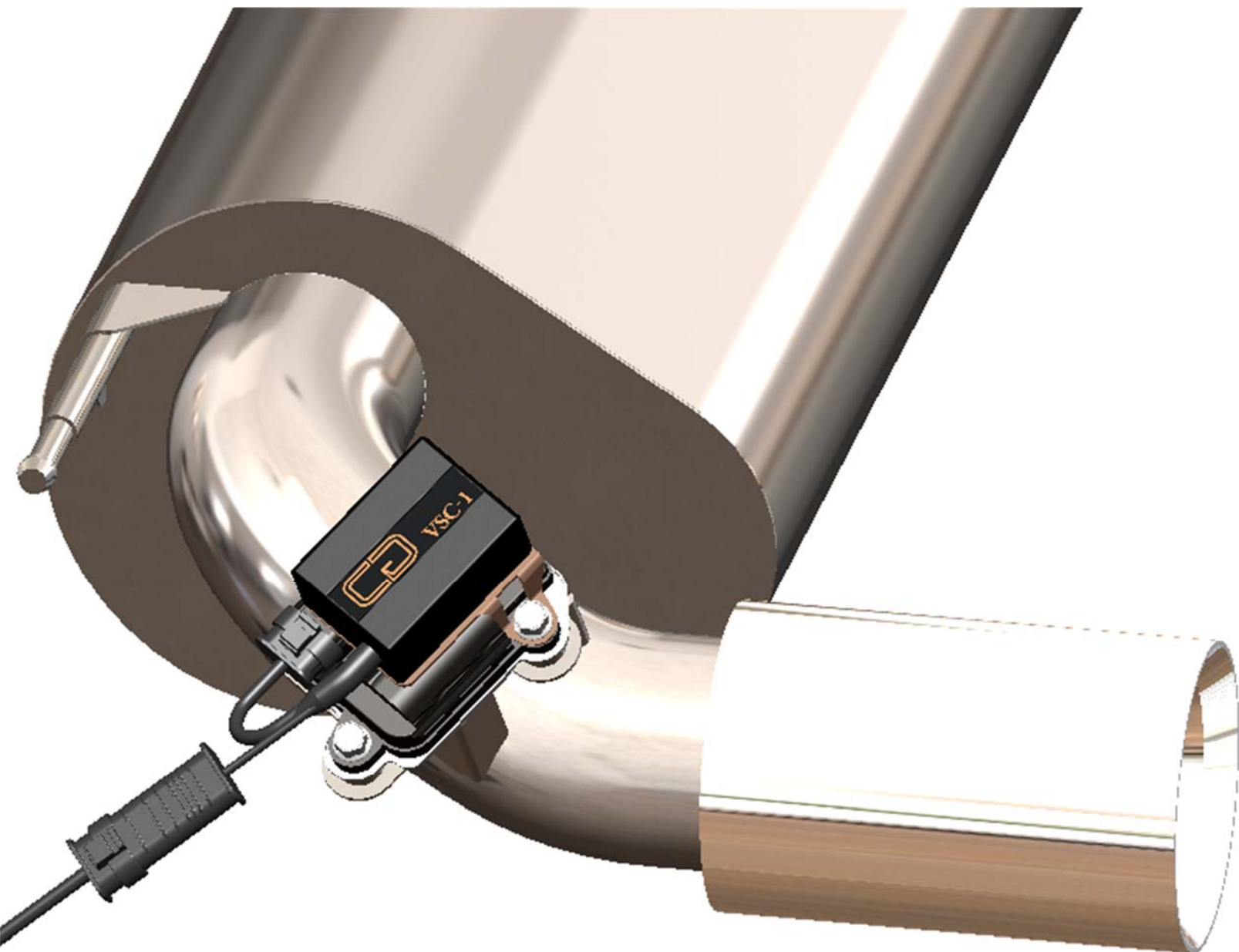
Tools Required: 10mm box end wrench or small socket wrench

Step 1: With the car completely off, locate the valve actuator motor near the muffler. Remove the factory plug from the motor by depressing the tab on top of the connector and pulling. Using the 10mm wrench, remove the top two screws from the motor. The bottom screw will not be removed and will keep the motor in position.



Step 2:

Place the VSC-1 controller onto the motor. Replace and tighten the two screws. Plug the small connector on the VSC-1 into the motor and the large connector on the VSC-1 into the factory plug, until a clicking sound is heard. Ensure wires are tucked up away from the ground.



Step 3:

You are ready to start your vehicle and enjoy the complete control over your cars sound and performance exclusively offered by the CG Precision VSC-1 controller.

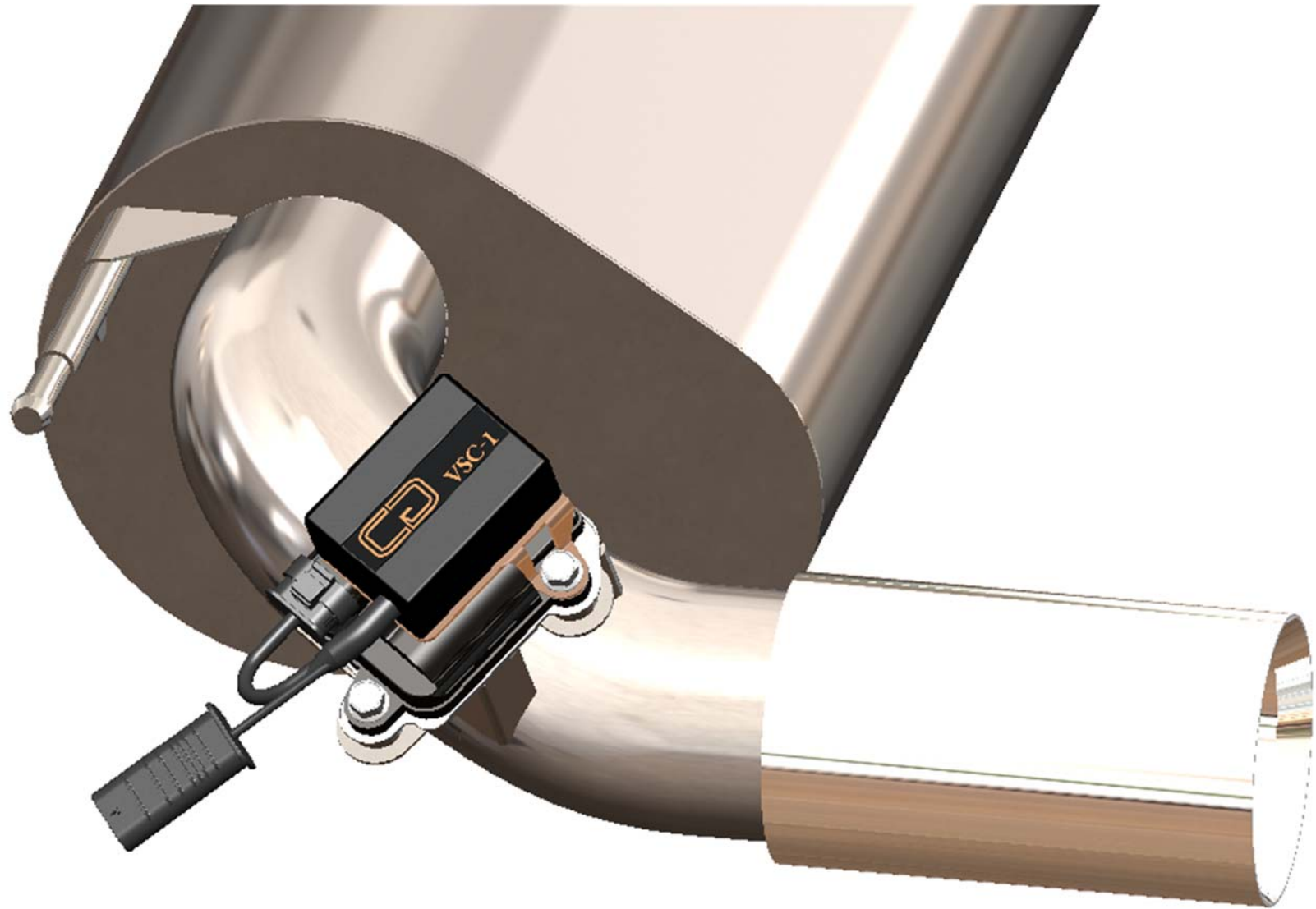
Failure to follow the procedures in this document may cause product damage. CG Precision has no control over other aftermarket manufacturers' design and production and therefore, product fitment may vary slightly when used on these exhaust systems.

Please contact CG Precision for additional guidance:

Email: support@cgprecision.com

Phone: 520-789-6305

WWW.CGPRECISION.COM



© All images and content are property of CG Precision LLC.