

Product
Reference
Guide

2008

Gendex. Imaging Excellence.

GENDEX®
KaVo Dental Group

Gendex. Imaging Excellence

It has been just over a century since Wilhelm Conrad Roentgen's discovery of the X-ray in 1895. Since then, radiology has transformed from a scientific curiosity to a medical and dental necessity. The Gendex lineage can be traced back to Roentgen's time and extends to today, where Gendex is an international leader in dental radiology and digital imaging.

Victor Electric was founded in 1893 in Chicago and was one of the earliest X-ray equipment supplies worldwide. Victor Medical manufactured a variety of electro-therapeutic devices and became a successful business. The company was absorbed by General Electric in 1926 and became part of the GE Medical business unit.

The dental radiology division of GE Medical eventually became an independent corporation called Gendex in 1983. In 1991, Gendex purchased the European business of Philips dental X-ray operation, further strengthening the company's position as a world leader in dental X-ray. In June 1993 Gendex merged with DENTSPLY International.

In 2004 Danaher Corporation, a Washington DC Company, bought the Gendex Division from Dentsply International.

Later that year, Danaher acquired Kaltenbach and Voigt (KaVo). Gendex became part of the KaVo Dental family, creating the ultimate equipment solution provider for dental professionals.

Table of contents

Panoramic X-ray	4
Orthoralix® 8500	6
Orthoralix® 9200	8
Orthoralix® 9200 DDE	10
Digital Imaging	20
VisualiX® eHD Intraoral digital sensor systems	22
DenOptix® QST Phospor plate scanning systems	28
Intraoral X-ray	36
Expert DC Intraoral system	38
Oralix AC Intraoral system	40
Intraoral Cameras	46
AcuCam® Concept IV FWT Camera systems	48
AcuCam® Concept IV Camera systems	48
eZ1 Camera systems	52
Software	56
VixWin™ Platinum Software	58
VixWin™ DICOM	59
Developers	60
Clarimat 300 Film processor	62
Technology explained	64
Installation requirements and dimensions	72
General sales and Warranty conditions	78

Data subject to change without prier notice.

Panor

A perfect mechanism

In a panoramic exam the image is created by the movement of the radiation source in any direction of the X-Ray plane. This makes it possible to obtain optimized radiographs of a practically elliptical structure, like the dental arch is.

The capability of the system to follow a trajectory which fully represents the dental arch is an essential element to avoid alterations.

All the Gendex pan systems have been developed paying particular attention to this point, by the means of a multi-motors articulated kinematics which makes possible the optimum execution of all the projections with maximum reliability, accuracy and simplicity.



ceramic X-ray



Orthoralix® 8500

Highest image quality ...within everyone's reach

Panoramic radiographic system with double-speed motorized column, 3 axes-kinematics unit with control of movements by microprocessor.

Features

- High performance DC X-ray generator, high frequency with 0.4 focal spot
- Radiographic imaging through traditional film cassette or latest generation CCD sensor
- Up to 4 computer-controlled motors allow the trajectory to accurately follow the patient's morphology
- Optimized panoramic image reconstruction
- 2-speed telescopic column
- Laser beams enable precise patient positioning
- Multiple horizontal beams for immediate setting of the Frankfurt plane
- Lateral positioning devices, handgrip and integrated chin rest allow stable and comfortable pose
- Unit-Mounted control panels
- Easy to be upgraded to digital acquisition of images
- Easy and aesthetic integration into every practice
- CE 0086 Medical device conform to the directive 93/42/CEE



8500



Orthoralix 8500 DDE

Direct digital panoramic radiographic system (DDE) with latest generation CCD sensor. Complete digital operation with a significant reduction of the emitted dose.

- Standard and child panoramic projections with constant magnification factor
- Immediate connection to the LAN network and immediate access to images on any network PC in the practice
- No need for a dedicated PC interface
- Imaging software for electronic storage and management of data

Orthoralix 8500 DDE

Part Number 0.820.1556



Orthoralix 8500

Panoramic radiographic system, film based.

- Easy to be upgraded to digital acquisition of images with a Gendex sensor (DDE) or by using an indirect digital system with phosphor plate technology (PSP)
- Standard and child panoramic projections with constant magnification factor

Orthoralix 8500

Part Number 0.820.1557

Orthoralix® 9200

The panoramic and cephalometric system with a wide range of advantages.

Panoramic and cephalometric radiographic system for multiple projections with double speed-motorized column, 3 axes-kinematics unit with control of movements by microprocessor.

Features

- High performance, high frequency DC X-ray generator with 0.5 focal spot
- 2-speed motorized column with slow vertical movement for 'fine' patient positioning (2,4 mm/sec)
- 4 computer-controlled motors allow the trajectory to accurately follow the patient's morphology
- 3 Laser beams system, motorized headrest, handgrip and chin rest for precise patient positioning
- Advanced Dento Maxillo Facial Projections including orthogonal dentition, frontal dentition, frontal sinus, and others
- Multiple TMJ projections
- Cephalometric projections including latero-lateral, antero-posterior, postero-anterior, submento-vertex, and carpus
- Transcan cross-sectional tomography
- Automatic Exposure Control (AEC) for panoramic and cephalographic views
- Special precision soft tissue filter
- One key-one function philosophy features easy to use icon buttons with complete control of all factors and setting
- Easy to be upgraded to digital acquisition of images
- CE 0086 Medical device conform to the directive 93/42/CEE





Orthoralix 9200 Plus

Panoramic radiographic system film based for multiple projections of the whole dento-maxillo-facial area.

- Complete imaging programs: basic panoramic radiology, Dento Maxillo Facial projections and Transcan implantology programs
- Automatic Exposure Control (AEC)
- Easy to be upgraded with the Ceph arm for cephalometric projections

Orthoralix 9200 Plus

Part Number 0.820.0011

Orthoralix 9200 Plus Ceph

Part Number 0.820.0015

Orthoralix 9200 AEC

Panoramic radiographic system film based with Automatic Exposure Control (AEC) of exposures for panoramic views.

- Complete basic panoramic radiology
- Easy to be upgraded with the Ceph arm for cephalometric projections
- Easy to be upgraded to special projections (DMF, Transcan)

Orthoralix 9200 AEC

Part Number 0.820.0031

Orthoralix 9200 AEC Ceph

Part Number 0.820.0034



Orthoralix 9200

Panoramic radiographic system film based for basic panoramic radiology.

- Complete basic panoramic radiology
- Easy to be upgraded to special projections (DMF, Transcan) and for cephalometric projections (with ceph arm)

Orthoralix 9200

Part Number 0.820.0017

Orthoralix 9200 Ceph

Part Number 0.820.0020

Orthoralix® 9200 DDE

Direct Digital Evolution

Digital panoramic and cephalometric radiographic system with ergonomic CCD digital module unit (DMU), for panoramic and/or cephalometric real time image reconstruction.

Features

- 3 axes-kinematics unit with control of movements by microprocessor
- 2-speed motorized column with slow vertical movement for 'fine' patient positioning (2,4 mm/sec)
- High performance, high frequency DC X-ray generator 0,5 focal spot
- Automatic Exposure Control (AEC) for panoramic and cephalographic views
- 3 Laser beams system, motorized headrest, handgrip and chin rest for precise patient positioning
- One key-one function philosophy features easy to use icon buttons with complete control of all factors and setting
- Electromechanical coupling/releasing of digital module unit (DMU)
- Safety system to avoid DMU accidentally falling
- LAN connection
- CE 0086 Medical device conform to the directive 93/42/CEE

Digital Cephalometric arm

- High speed digital cephalometric scanning mechanism
- Special precision soft tissue filter for Latero-Lateral view
- 90° of the ceph DMU bay for easier DMU insertion



9200DDE



Orthoralix 9200 DDE Plus

Panoramic radiographic system with CCD sensor of latest generation for multiple projections of the whole dento-maxillo-facial area.

- Complete imaging programs: basic panoramic radiology, Dento Maxillo Facial projections and Transcan implantology programs
- Easy to be upgraded with the Digital Ceph arm for high speed cephalometric projections

Orthoralix 9200 DDE Plus Pan
(with Panoramic DMU)

Part Number 0.820.0038

Orthoralix 9200 DDE Plus Pan C
(with Cephalometric DMU)

Part Number 0.820.0046

Orthoralix 9200 DDE Plus Ceph
(with Cephalometric DMU)

Part Number 0.820.0042

Orthoralix 9200 DDE

Panoramic radiographic system with CCD sensor for basic panoramic radiology.

- Complete basic panoramic radiology
- Easy to be upgraded with the Digital Ceph arm for high speed cephalometric projections

Orthoralix 9200 DDE Pan
(with Panoramic DMU)

Part Number 0.820.0036

Orthoralix 9200 DDE Pan C
(with Cephalometric DMU)

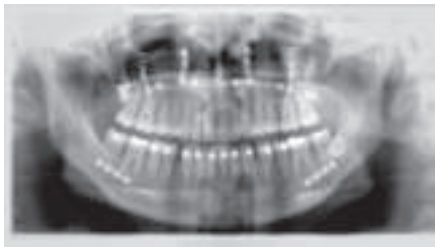
Part Number 0.820.0044

Orthoralix 9200 DDE Ceph
(with Cephalometric DMU)

Part Number 0.820.0040



Orthoralix 9200/9200 DDE radiology programs



Basic panoramic radiology programs

The following basic panoramic programs are included in all the versions of Orthoralix 9200/9200 DDE



Standard panoramic



Child panoramic



Orthogonal Dentition



Half Panoramic
(left and right)



Lateral TMJ



Cephalometric radiology programs

The following basic cephalometric programs are included in all the ceph versions of Orthoralix 9200/9200 DDE



Latero-Lateral (LL)



Antero-Posterior (AP)



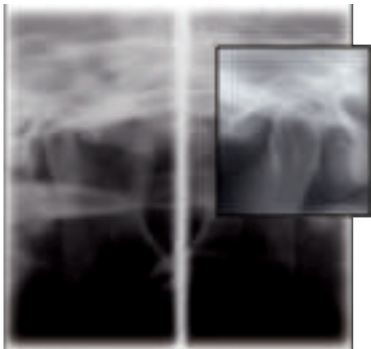
Postero-Anterior (PA)



Submento-Vertex (SV)



Carpus



Dento-Maxillo-Facial radiology programs

Specialized programs for Dento-Maxillo-Facial radiology. This option includes a special cephalostat for TMJ imaging. It includes the following programs:



Frontal TMJ



Frontal Dentition
(includes as standard in 9200 DDE models)



Orthogonal Half Dentition
(left and right)



Frontal Maxillary Sinuses



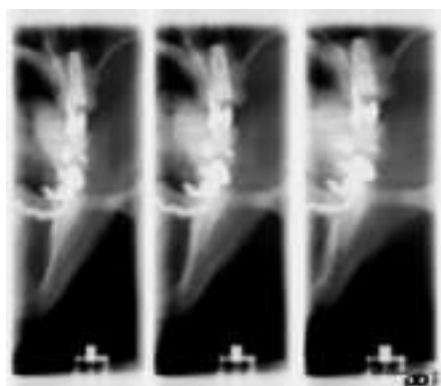
Lateral Maxillary Sinus
(left and right)

DMF option for 9200
(both conventional and digital DDE systems)

Part Number 0.820.0228

Cephalometric upgrade Kits

From Panoramic system to Cephalometric system



Transcan programs

This option allows cross sectional views of the dental arches. Provides 3 cross-sectional views (equally displaced 7mm on parallel planes) of the selected portion of the mandibula or maxilla. It includes an impression tray kit and table goniometric support.

Transcan option
for conventional Orthoralix 9200

Part Number 0.820.0229

Transcan option
for digital Orthoralix 9200 DDE

Part Number 0.820.0235



Orthoralix 9200 systems

Ceph arm for cephalometric image reconstruction. It includes a flat cassette 18x24 cm provided with Kodak Lanex Regular intensifying screens (rare earths).

- Complete cephalometric radiology programs

Ceph arm for Orthoralix 9200

Part Number 0.820.1614

Ceph arm for Orthoralix 9200 AEC/Plus

Part Number 0.820.1615



Orthoralix 9200 DDE systems (from S/N 03701004)

High speed digital cephalometric arm with ergonomic CCD digital module unit (Ceph) for cephalometric real time image reconstruction.

- Complete cephalometric radiology programs

Digital field upgrade kit
from Orthoralix 9200 DDE Pan (standard or Plus)
to Orthoralix 9200 DDE Ceph (standard or Plus)

Part Number 0.820.1578

Digital field upgrade kit
from Orthoralix 9200 DDE Pan C (standard or Plus)
to Orthoralix 9200 DDE Ceph (standard or Plus)

Part Number 0.820.1619

Components & Accessories



Free standing base

Free standing base for Orthoralix 8500 systems

Part Number 0.820.1558

For Orthoralix 9200 /AEC /Plus /DPI /DDE /Ceph
and for Orthoralix SD/SD2/S/Ceph

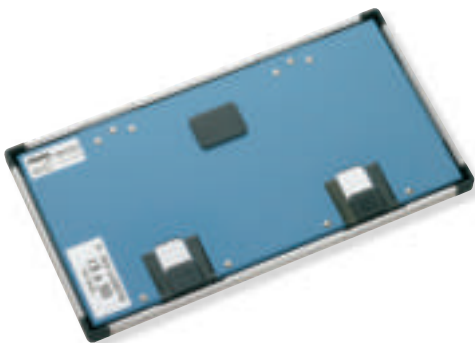
Part Number 0.820.0221

Cephalostat for TMJ projections

Auxiliary support for patient positioning
specifically developed for lateral and frontal
projections of the temporo-mandibular joints.
For the Orthoralix 9200/9200 DDE and for
Orthoralix SD2/S.

Cephalostat for TMJ projections

Part Number 0.820.0179



Radiographic cassettes

Flat cassette 15x30 cm
without intensifying screens

Part Number 0.820.0271

Flat cassette 18x24 cm
without intensifying screens

Part Number 0.820.0272

Flat cassette 8x10 inch
without intensifying screens

Part Number 0.820.0273

Flat cassette 5x12 inch
without intensifying screens

Part Number 0.820.0205



Flat cassette 15x30 cm
with Kodak Lanex Regular intensifying screens

Part Number **0.820.0207**

Flat cassette 15x30 cm
with Kodak Lanex Medium intensifying screens

Part Number **0.820.0206**

Flat cassette 18x24 cm
with Kodak Lanex Regular intensifying screens

Part Number **0.820.0208**

Intensifying screens

Rare earth intensifying screens 15x30 cm
Kodak Lanex Regular

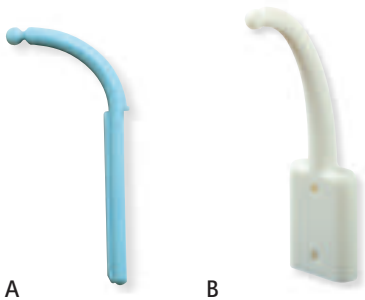
Part Number **0.820.0193**

Rare earth intensifying screens 15x30 cm
Kodak Lanex Medium

Part Number **0.820.0203**

Rare earth intensifying screens 18x24 cm
Kodak Lanex Regular

Part Number **0.820.0202**



Bite block

Bite block for patient positioning.

Disposable bite guides for Orthoralix 8500
(package of 100 pcs) **A**

Part Number **0.820.1573**

Bite block for all Orthoralix models except 8500
(white version) **B**

Part Number **0.820.1719**

Digital upgrade Kits

From Film to Digital system



Hygienic protections

Hygienic bags for Orthoralix ear plugs (280 pcs)

Part Number 0.820.0259

Hygienic bags (100 pcs) for Orthoralix bite block (transparent version)

Part Number 0.820.0166

Hygienic bags (200 pcs) for Orthoralix bite block (white version)

Part Number 0.820.1777

Hygienic bags for Orthoralix SD headrest (100 pcs)

Part Number 0.820.0258

From Panoramic Film to Panoramic Digital

Digital field upgrade kit from Orthoralix 9200 Film system to Orthoralix 9200 DDE Panoramic (from S/N 03701004)

■ **from** Orthoralix 9200 or Orthoralix 9200 AEC to Orthoralix 9200 DDE standard

Part Number 0.820.0236

■ **from** Orthoralix 9200 Plus to Orthoralix 9200 DDE Plus

Part Number 0.820.0237

■ **from** Orthoralix 9200 or Orthoralix 9200 AEC to Orthoralix 9200 DDE Pan C standard

Part Number 0.820.0238

■ **from** Orthoralix 9200 Plus to Orthoralix 9200 DDE Pan C Plus

Part Number 0.820.0239

From Panoramic Film to Digital Ceph

Digital field upgrade kit from Orthoralix 9200 Film system to Orthoralix 9200 DDE Digital Ceph (from S/N 03701004)

■ **from** Orthoralix 9200 (Pan or Ceph) and Orthoralix 9200 AEC (Pan or Ceph) to Orthoralix 9200 DDE standard Ceph

Part Number 0.820.1617

■ **from** Orthoralix 9200 Plus (Pan or Ceph) to Orthoralix 9200 DDE Plus Ceph

Part Number 0.820.1618

Orthoralix 8500
configuration

	Orthoralix 8500	Orthoralix 8500 DDE
Projections		
Standard panoramic radiology program	●	●
Child panoramic radiology program	●	●
Accessories		
Remote command for X-ray control	●	●
Disposable bite guides (package of 100 pieces)	●	●
Operator's and Service Manuals	●	●
Wall support	●	●
Free standing base	○	○
Imaging software	○	●

● standard ○ optional

Orthoralix 9200 configuration

	Orthoralix 9200 Plus	Orthoralix 9200 Plus Ceph	Orthoralix 9200 AEC	Orthoralix 9200 AEC Ceph	Orthoralix 9200	Orthoralix 9200 Ceph
Projections						
Basic panoramic radiology programs	●	●	●	●	●	●
Dento-Maxillo-Facial radiology programs	●	●	○	○	○	○
Transcan programs	●	●	○	○	○	○
Cephalometric programs	○	●	○	●	○	●
Automatic Exposure Control (AEC)						
Panoramic AEC	●	●	●	●	-	-
Cephalometric AEC	-	●	-	●	-	-
Cassette						
Panoramic flat cassette 15x30 cm	●	●	●	●	●	●
Cephalometric flat cassette 8x10 inch	-	○	-	○	-	○
Cephalometric flat cassette 18x24 cm	-	●	-	●	-	●
Intensifying screens						
Rare earth intensifying screens 15 x 30 cm (Lanex regular)	●	●	●	●	●	●
Rare earth intensifying screens 18 x 24 cm (Lanex regular)	-	●	-	●	-	●
Accessories						
Remote command for X-ray control	●	●	●	●	●	●
Image quality phantom	●	●	●	●	●	●
Hygienic bags for bite block (package of 200 pieces)	●	●	●	●	●	●
Hygienic bags for ear plugs (package of 280 pieces)	-	●	-	●	-	●
Operator's and Service Manuals	●	●	●	●	●	●
Wall support	●	●	●	●	●	●
Free standing base	○	○	○	○	○	○

● standard ○ optional - not possible

Orthoralix 9200 DDE configuration

	Orthoralix 9200 DDE Plus Pan	Orthoralix 9200 DDE Plus Pan C	Orthoralix 9200 DDE Plus Ceph	Orthoralix 9200 DDE Pan	Orthoralix 9200 DDE Pan C	Orthoralix 9200 DDE Ceph
Projections						
Basic panoramic radiology programs	●	●	●	●	●	●
Dento-Maxillo-Facial radiology programs	●	●	●	○	○	○
Transcan programs	●	●	●	○	○	○
Cephalometric programs	○	○	●	○	○	●
Automatic Exposure Control (AEC)						
Panoramic AEC	●	●	●	●	●	●
Cephalometric AEC	-	●	-	●	-	●
DMU Sensor						
DMU Panoramic	●	-	-	●	-	-
DMU Cephalometric	-	●	●	-	●	●
LAN						
LAN port	●	●	●	●	●	●
Accessories						
Remote command for X-ray control	●	●	●	●	●	●
Image quality phantom	●	●	●	●	●	●
Hygienic bags for bite block (package of 200 pieces)	●	●	●	●	●	●
Hygienic bags for ear plugs (package of 280 pieces)	-	-	●	-	-	●
Operator's and Service Manuals	●	●	●	●	●	●
Wall support	●	●	●	●	●	●
Free standing base	○	○	○	○	○	○
Imaging software	●	●	●	●	●	●

● standard ○ optional - not possible

When the present is no longer enough

During the last decade the evolution of technology has been much stronger than ever before.

Every aspect of our life has been influenced by it and, whatever previously considered as unchangeable, has revealed unexpected and enthusiastic perspectives of change.

Catch this challenge, recognize new opportunities, converse with the future and every limit will be overcome. We are all requested to look forward, and reach the top.

By introducing innovative products in the digital imaging Gendex has accepted this challenge and is giving you the possibility to obtain high professional performances.



tal Imaging



VisualiX® eHD

Ergonomics and High Definition

VisualiX is the digital intraoral sensor by Gendex based on the CCD (Charge Coupled Device) technology. It gives to the dentist the possibility to produce real time X-ray digital images of superior quality.

Features

- Drop-like shape, smooth edges and round corners follow the anatomical shape of the oral cavity maximizing patient comfort
- Unsurpassable quality digital images thanks to the "High Definition" Imaging Technology developed by Gendex that optimizes the efficiency of the image capturing process
- Instant acquisition of high quality and accurate digital images with maximum patient comfort
- Reduced worksteps during image acquisition due to the auto-trigger feature
- USB2 compatible, thus minimizing the time from image acquisition to image appearance on the computer screen
- Compatible with all intraoral radiographic systems
- Sensor cable length 3 m
- X-ray dose reduction and certification as a medical class II^a device according to the directive 93/42/CEE
- Two sensor sizes available
- CE 0086 Medical device conform to the directive 93/42/CEE



VisualiX eHD



VisualiX eHD Universal Size

Direct digital intraoral system with CCD sensor Universal size (Size 1) for endodontic, implantology and periapical examinations.

- Ergonomic universal size sensor with round package and cut corners maximizing patient comfort
- Detect X-ray and acquires the image without activation by the operator
- Seamless integration of the system in the practice with plug-n-play (USB) connections

VisualiX eHD Universal Size

Part Number 0.820.1555



VisualiX eHD Large Area

Direct digital intraoral system with CCD sensor Large Area (Size 2) for bitewing, endodontic, implantology and periapical examinations.

- Ergonomic large area sensor with round package and cut corners maximizing patient comfort
- Detects X-ray and acquires the image without activation by the operator
- Seamless integration of the system in the practice with plug-n-play (USB) connections

VisualiX eHD Large Area

Part Number 0.820.1575



VisualiX eHD Combo

Direct digital intraoral system with CCD sensor eHD Universal Size and eHD Large Area for complete examinations.

- Ergonomic universal size sensors with round package and cut corners maximizing patient comfort
- Detects X-ray and acquires the image without activation by the operator
- Seamless integration of the system in the practice with plug-n-play (USB) connections

VisualiX eHD Combo

Part Number 0.820.1576

Components / Accessories



Sensor wall-mounting assembly for eHD sensors

VisualiX eHD sensor mount

Part Number 0.820.1571



Wall mounting assembly for eHD electronic unit

VisualiX eHD wall mounting kit

Part Number 0.820.1570



Aiming device for Gendex's sensors

Positioning device for Gendex's sensors with four different configurations, easily recognisable by their colours: yellow for anterior periapical, blue for posterior periapical, green for endodontics and red for bitewing.

Aiming device for sensor VisualiX eHD

Part Number 0.820.1568

Aiming device for sensor VisualiX 32*, USB, HDI all sizes

Part Number 0.820.0281

* VisualiX 32 is the previous version of VisualiX HDI.



A B C D

Aiming rings*

Anterior (Blue) **A**

Part Number 0.820.1535

Posterior (Yellow) **B**

Part Number 0.820.1534

Bitewing (Red) **C**

Part Number 0.820.1537

Endo (Green) **D**

Part Number 0.820.1543

(Package of 1 piece)

* These accessories are valid for VisualiX eHD, USB, HDI and VisualiX 32 sensors.



A B C D

Arms*

Anterior (Blue pins) **A**

Part Number 0.820.1532

Posterior (Yellow pins) **B**

Part Number 0.820.1533

Bitewing (Red pins) **C**

Part Number 0.820.1536

Endo (no pins) **D**

Part Number 0.820.1542

(Package of 1 piece)



A B C D

Bite pieces*

Anterior (Blue) **A**

Part Number 0.820.1539

Posterior (Yellow) **B**

Part Number 0.820.1540

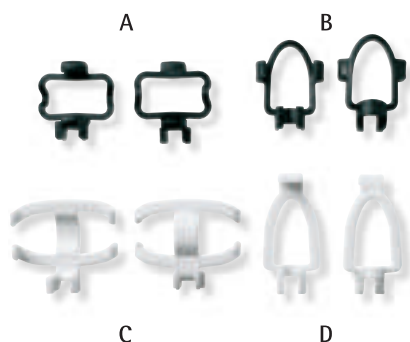
Bitewing (Red) **C**

Part Number 0.820.1541

Endo (Green) **D**

Part Number 0.820.1538

(Package of 3 pieces)



Baskets for VisualiX eHD

Horizontal Basket Universal Size (Black) **A**

Part Number 0.820.1545

Vertical Basket Universal Size (Black) **B**

Part Number 0.820.1544

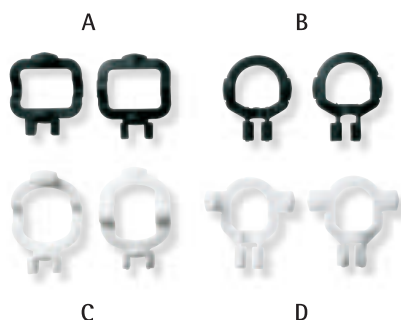
Horizontal Basket Large Area (White) **C**

Part Number 0.820.1547

Vertical Basket Large Area (White) **D**

Part Number 0.820.1546

(Package of 3 pieces)



Baskets for VisualiX USB / HDI

Horizontal Basket Universal Size (Black) **A**

Part Number 0.820.0364

Vertical Basket Universal Size (Black) **B**

Part Number 0.820.0365

Horizontal Basket Large Area (White) **C**

Part Number 0.820.0366

Vertical Basket Large Area (White) **D**

Part Number 0.820.0367

(Package of 3 pieces)



Disposable barriers

Disposable barriers latex free for VisualiX Universal and Large Area sensors (package of 500 pieces)

Part Number 0.820.1562



Disposable barriers for VisualiX HDI

Disposable barriers for VisualiX HDI Universal Size, USB and VisualiX 32* sensor. (package of 500 pieces)

KaVo code 0.820.0282

Disposable barriers for VisualiX HDI Large Area sensor (package of 500 pieces)

KaVo code 0.820.0283

* VisualiX 32 is the previous version of VisualiX HDI.

VisualiX eHD
configuration

CCD sensors

Universal size size 1 37.5x 25.5 mm	●	○	●
Large Area size 2 40.5x 33 mm	○	●	●

Aiming device for Gendex's sensors

RINN XCP-DS (1 package)	●	●	●
-------------------------	---	---	---

Accessories

Disposable barriers (package 500 pieces)	●	●	●
Wall mounting kit	●	●	●
eHD sensor mount	●	●	●
Imaging software	●	●	●
USB connection cables	●	●	●
Operator's and Service Manuals	●	●	●

● standard ○ optional

VisualiX eHD Universal Size	VisualiX eHD Large Area	VisualiX eHD Combo
●	○	●
○	●	●
●	●	●
●	●	●
●	●	●
●	●	●
●	●	●

DenOptix® QST

Quad Speed Technology

The DenOptix digital imaging system is a Photo-Stimulable Phosphor (PSP) Technology based solution that completely replaces traditional film processing equipment and chemicals, allowing you the digitalization of your practice in an efficient and simple way, revolutionizing the way you work. It captures information on storage-phosphor imaging plates and uses its high speed scanner to convert the data into digital images for viewing on a monitor.

Features

- Market leading scan speed provides a full-mouth series in as little as 4 seconds per image
- DenOptix QST displays 4 bitewings in under 30 seconds
- Innovative QST design significantly decreases image plate loading time
- DenOptix QST eliminates the cost and time associated with traditional film processing
- DenOptix QST significantly reduces patient and staff waiting time
- The soft and flexible DenOptix phosphor plates offer ease of use, patient comfort, and proven technology.
- Available in all Intra-Oral, Panoramic, and Cephalometric sizes
- USB 2 interface
- CE 0086 Medical device
conform to the directive 93/42/CEE



DenOptix QST



DenOptix QST I/O

The DenOptix QST unit for intraoral images

- Intraoral carousel with 39 intraoral images plates: 20 size 2, 9 size 1, 8 size 0, 2 size 3
- Provides a full-mouth series in as little as 4 seconds per image
- Utilizes multiple film sizes simultaneously
- Simple conversion to digital with comfortable, wireless and flexible imaging plates
- VixWin imaging software for electronic storage and management of data

DenOptix QST I/O Scanner

Part Number 0.820.1590



DenOptix QST PAN Plus

The DenOptix unit for panoramic and intraoral images

- Extraoral carousel for 1 panoramic plate and 7 intraoral imaging plates: 2 size 0, 4 size 2, 1 size 4
- Panoramic images can be obtained in less than 80 seconds
- The system requires no adjustments to the panoramic exposure settings (kV, mA or time).
- The system can be used with almost every existing panoramic unit
- Simple conversion to digital with comfortable, wireless and flexible imaging plates
- VixWin imaging software for electronic storage and management of data

DenOptix QST PAN Plus Metric format with panoramic imaging plate, 15x30 cm

Part Number 0.820.1591

DenOptix QST PAN Plus Inch format with panoramic imaging plate, 5x12 inch

Part Number 0.820.1592



DenOptix QST COMBO

The DenOptix QST COMBO unit for panoramic and intraoral images two carousels

- Intraoral carousel with 39 intraoral imaging plates: 20 size 2, 9 size 1, 8 size 0, 2 size 3
- Extraoral carousel for 1 panoramic plate and 7 intraoral imaging plates (2 size 0, 4 size 2, 1 size 4)
- Utilizes multiple film sizes simultaneously
- Simple conversion to digital with comfortable, wireless and flexible imaging plates
- Panoramic images can be obtained in less than 80 seconds
- VixWin imaging software for electronic storage and management of data

DenOptix QST COMBO Metric format with panoramic imaging plate, 15x30 cm

Part Number 0.820.1593

DenOptix QST COMBO Inch format with panoramic imaging plate, 5x12 inch

Part Number 0.820.1594

DenOptix QST Ceph:

is obtained from DenOptix QST PAN Plus or COMBO configurations described above adding the DenOptix QST Ceph upgrade kit (see page 32)

Phosphor plates



I/O Imaging plates

Reusable phosphor coated imaging plates (PSP) to capture X-ray emissions with all intraoral radiographic systems. Available to match the sizes of traditional intraoral film.

Size 0 (22x35 mm) package of 2 pieces

Part Number 0.820.0299

Size 1 (24x40 mm) package of 2 pieces

Part Number 0.820.0300

Size 2 (31x41 mm) package of 4 pieces

Part Number 0.820.0301

Size 3 (27x54 mm) package of 2 pieces

Part Number 0.820.0302

Size 4 (57x76 mm) package of 1 piece

Part Number 0.820.0303



Panoramic Imaging Plates

Reusable phosphor panoramic imaging plates (PSP) for panoramic radiographic system. Two panoramic PSP available.

Size 15x30 cm package of 1 piece

Part Number 0.820.0295

Size 5x12 inch package of 1 piece

Part Number 0.820.0297



Cephalography Imaging Plates

Reusable phosphor cephalometric imaging plates (PSP) for cephalometric radiographic system. Two cephalometric PSP available.

Size 18x24 cm package of 1 piece

Part Number 0.820.0296

Size 8x10 inch package of 1 piece

Part Number 0.820.0298

Components & Accessories



Disposable barrier envelopes

Disposable barrier envelopes with adhesive strip for protection from cross-contamination.

Size 0 (package of 100 pieces)

Part Number 0.820.0286

Size 1 (package of 100 pieces)

Part Number 0.820.0287

Size 2 (package of 100 pieces)

Part Number 0.820.0288

Size 3 (package of 100 pieces)

Part Number 0.820.0289

Size 4 (package of 50 pieces)

Part Number 0.820.0290



DenOptix QST Carousels

Carousels for multi-plate and multi-size scanning. Three carousels available: for intraoral applications only, for intraoral and panoramic applications, for intraoral and ceph applications.

Intraoral carousel
(holds up to 39 imaging plates)

Part Number 0.820.1604

Extraoral carousel for Pan and I/O imaging plates
(metric and inch)

Part Number 0.820.1605

Extraoral carousel for Ceph and I/O imaging
plates (metric and inch)

Part Number 0.820.1606



Dark box

Dark box for storage of intraoral imaging plates

Part Number 0.820.0291

DenOptix QST

Configuration (System Upgrade Kits)

DenOptix I/O to COMBO (metric or inch carousel)

Expanded DenOptix Intraoral system to acquire panoramic images.
The panoramic carousel can hold either the 5 x 12 inch or the 15 x 30 cm imaging plate.
(not simultaneously)

Includes:

- 1 Extraoral carousel for pan and I/O imaging plates
- 2 Imaging Plates size 0 and 8 Imaging Plates size 2
- 1 Image plate 15x30 cm (or 5x12 inch) for panoramic imaging
- 100 Disposable Barrier Envelops size 0
- 200 Disposable Barrier Envelops size 2
- One empty flat cassette 15x30 cm (or 5x12 inch)

DenOptix QST I/O to COMBO Metric format

Part Number 0.820.1595

DenOptix QST I/O to COMBO Inch format

Part Number 0.820.1596

DenOptix PAN Plus to COMBO

Expanded DenOptix Extraoral system to acquire also intraoral images of size 1 and 3.
The intraoral carousel can hold up to 39 I/O imaging plates:
20 size 2, 9 size 1, 8 size 0, 2 size 3

Includes:

- 1 Intraoral carousel
- 20 Imaging Plates size 2
- 500 Disposable Barrier Envelops size 2

DenOptix QST PAN Plus to COMBO

Part Number 0.820.1597

DenOptix PAN Plus or COMBO to Ceph (metric or inch carousel)

Expanded DenOptix Extraoral system to acquire cephalometric images.
The cephalometric carousel can hold either the 8 x 10 inch or the 18 x 24 cm imaging plate
(not simultaneously)

Includes:

- 1 Extra-oral carousel for Ceph and I/O imaging plates
- 1 Image plate 18x24 cm (or 8x10 inch) for cephalometric imaging
- One empty flat cassette 18x24 cm (or 8x10 inch)

DenOptix QST PAN Plus or COMBO to Ceph Metric format

Part Number 0.820.1598

DenOptix QST PAN Plus or COMBO to Ceph Inch format

Part Number 0.820.1599

DenOptix QST configuration

	DenOptix QST I/O	DenOptix QST Pan Plus Metric	DenOptix QST Pan Plus inch	DenOptix QST Combo metric	DenOptix QST Combo inch
Carousel					
Intraoral carousel for 8 size 0, 9 size 1, 20 size 2, 2 size 3.	●	-	-	●	●
Extraoral carousel for 1 panoramic plate 15x30 cm and 7 intraoral imaging plates (2 size 0, 4 size 2, 1 size 4)	-	●	-	●	-
Extraoral carousel for 1 panoramic plate 5x12 in. and 7 intraoral imaging plates (2 size 0, 4 size 2, 1 size 4)	-	-	●	-	●
Phosphor plates					
2 Intraoral imaging plate size 0	-	●	●	●	●
8 Intraoral imaging plates size 2	-	●	●	-	-
20 Intraoral imaging plates size 2	●	-	-	●	●
1 Panoramic imaging plate 15 x 30 cm	-	●	-	●	-
1 Panoramic imaging plate 5 x 12 inch	-	-	●	-	●
Disposable Barrier Envelops					
100 disposable barrier envelopes size 0	-	●	●	●	●
200 disposable barrier envelopes size 2	-	●	●	-	-
500 disposable barrier envelopes size 2	●	-	-	●	●
Accessories					
Dark box for plate transfer	●	●	●	●	●
USB 2.0 connection cable	●	●	●	●	●
Imaging software	●	●	●	●	●
Operator's and Service Manuals	●	●	●	●	●

● standard - not included

Kerr-Hawe Sensor Holders



Testset Sensor Holder System

It includes: 5 Sensor Holders with Ring (1 Kwik-Bite Senso, 1 Super-Bite Senso Anterior, 1 Super-Bite Senso Posterior, 1 Endo-Bite Senso Anterior, 1 Endo-Bite Senso Posterior), 5 Centring Devices

Part Number 0.820.2116



Kwik-Bite Senso Standard Kit

It includes: 4 Kwik-Bite Senso, 1 Centring Device

Part Number 0.820.2115



Centring Rings

Refill packs of 3

Part Number 1.005.8983



Kwik-Bite Centring Devices
Refill packs of 50

Part Number 1.005.8987



Assorted Kit Endo-Bite Senso

It includes: 2 Endo-Bite Senso Anterior with Ring, 2 Endo-Bite Senso Posterior with Ring, 2 Centring Devices

Part Number 0.820.2120



Endo-Bite Senso Anterior

It includes: 4 Endo-Bite Senso Anterior with Ring, 1 Centring Device

Part Number 0.820.2121

Endo-Bite Senso Posterior

It includes: 4 Endo-Bite Senso Posterior with Ring, 1 Centring Device

Part Number 0.820.2122

Endo-Bite Anterior Centring Devices
Refill packs of 50

Part Number 1.005.8990

Endo-Bite Posterior Centring Devices
Refill packs of 50

Part Number 1.005.8991



Assorted Kit Super-Bite Senso

It includes: 2 Super-Bite Senso Anterior with Ring, 2 Super-Bite Senso Posterior with Ring, 2 Centring Devices

Part Number 0.820.2117



Super-Bite Senso Anterior

It includes: 4 Super-Bite Senso Anterior with Ring, 1 Centring Device

Part Number 0.820.2118

Super-Bite Senso Posterior

It includes: 4 Super-Bite Senso Posterior with Ring, 1 Centring Device

Part Number 0.820.2119

Super-Bite Anterior Centring Devices
Refill packs of 50

Part Number 1.005.8984

Super-Bite Posterior Centring Devices
Refill packs of 50

Part Number 1.005.8986

Kerr-Hawe PSP Holders



X-Ray Film Holders Test-Set

It includes: 6 Film Holders with Ring
(1 Kwik-Bite, 1 Super-Bite Anterior, 1 Super-Bite Posterior, 1 Para-Bite, 1 Endo-Bite Anterior, 1 Endo-Bite Posterior), 6 Centring Devices

Part Number 1.005.8975



Endo-Bite - Assortment

It includes: 2 Endo-Bite Anterior with Ring, 2 Endo-Bites Posterior with Ring, 2 Centring Devices

Part Number 1.005.8977



Super-Bite - Assortment

It includes: 2 Super-Bite Anterior, 2 Super-Bite Posterior, 2 Centring Devices

Part Number 1.005.8980



Kwik-Bite with Ring

It includes: 5 Kwik-Bite with Ring, 1 Centring Device

Part Number 1.005.8976



Endo-Bite Anterior with Ring

It includes: 4 Endo-Bite Anterior with Ring, 1 Centring Device

Part Number 1.005.8978



Super-Bite Anterior with Ring

It includes: 4 Super-Bite Anterior with Ring, 1 Centring Device

Part Number 1.005.8981



Endo-Bite Posterior with Ring

It includes: 4 Endo-Bite Posterior with Ring, 1 Centring Device

Part Number 1.005.8979



Super-Bite Posterior with Ring

It includes: 4 Super-Bite Posterior with Ring, 1 Centring Device

Part Number 1.005.8982

Intr

Capturing precise details

It is a good practice to spend some time walking outside and enjoy the world around us.

But if you do not see besides the appearance, everything becomes soon obvious and boring and you wish to leave it as quick as possible.

The secret is to look carefully into details, this makes every place unique and worthwhile.

The attention for the smallest detail, the accurate exposure techniques, the minimum distortion and shading allow the Gendex intra-oral systems to have clear and detailed images, which every professional would appreciate.



Paoral X-ray



Expert DC

High Frequency X-ray system

High frequency DC X-ray system for Intraoral radiography.

Features

- 0.4 mm: small tube focal spot for maximum detail recognition with minimum distortion
- 7mA, 65kV DC output: sharpest possible images with optimum contrast
- Consistent radiation emission
- Accurate, short exposure time for best compatibility with digital receptors
- Both short and long cone fully integrated with tubehead for best performance and easy cleaning
- Complete and simple control panel one key, one function
- Unique QuickSet tube head controls: easy operating technique changes or verification at any time
- Easy customization available: film/digital, cone length setting
- Ergonomic tube head design makes positioning easy, accurate and fast
- USB 2.0 port for improved workflow with Visualix eHD sensor from Gendex
- Optimized On/Off switch location for greater access
- Modern design for improved aesthetics
- Plastic clamshell covers for X-ray tubehead
- Multiple extension arms for any room layout: 140 cm, 165 cm, 191 cm
- Remote control unit or self contained at no extra cost
- CE 0086 Medical device conform to the directive 93/42/CEE



Expert DC

Accessories



Expert DC

High frequency X-ray system for Intraoral radiography with round BLC (20 cm).

- Exposure time range from 0.02 to 2 s.
- Setting of the technical factors (preset or manual).
- Quickset system for selecting exposure time directly on the X-ray tubehead.
- Control unit to be installed directly on wall by a support or outside the X-ray area.

Expert DC X-ray system, 191 cm useful reach

Part Number 1.005.4517

Expert DC X-ray system, 165 cm useful reach

Part Number 1.005.4516

Expert DC X-ray system, 140 cm useful reach

Part Number 1.005.3549



Beam Limiting Cone

In order to ensure correct alignment in addition to the 20 cm circular shield collimator are available

- circular section (Ø 6cm) length 30 cm
- rectangular section (37x27 mm) length 20 cm
- rectangular section (37x27 mm) length 30 cm

Round Beam Limiting Cone, length 30 cm

Part Number 0.820.0352

Rectangular Beam Limiting Cone, length 20 cm

Part Number 1.005.8558

Rectangular Beam Limiting Cone, length 30 cm

Part Number 1.005.8559



Hand-switch

Exposure hand-switch with extensible coiled cable

Expert DC Hand-switch

Part Number 0.820.0353

Oralix AC

Reliability, tradition and quality at the service of dental professional

X-ray system for intraoral and extraoral radiography with two models of microprocessor-controlled dental timers.

Features

- Simple and accurate time selection with object programmed electronic timer controlled by a micro-processor
 - Micro-processor control of the filament preheating time and exposure time
 - Advanced electronic control: compensation of mains fluctuations, continuous check on operation conditions, self test function for trouble shooting
- 
- The image shows the Oralix AC X-ray system components. In the foreground, there is a white, rectangular X-ray tube head with a black beam limiting cone attached. A thin wire is connected to the side of the head. In the background, there is a white control unit with a digital display showing '00.3' and several buttons. A coiled cable is connected to the control unit.
- Multiple system configurations: two types of Beam Limiting Cone with round or rectangular section
 - Extension arms from 141cm to 186 cm useful reach
 - Compatible with all film and digital imaging
 - CE 0086 Medical device conform to the directive 93/42/CEE

Oralix AC



Oralix AC Densomat

X-ray system for intraoral and extraoral radiography with Densomat timer.

- Exposure time range from 0.03 to 2.5 s
- Set-up of speed of X-ray films
- Set-up of exposure time by selection of patient size
- Set-up of exposure timer by tooth type
- Digital imaging function
- Switch for control of a second tubehead
- Possibility to set up exposure time directly
- Wall support, 45 cm (141 cm useful reach) or 90 cm (186 cm useful reach) extension arm.

Oralix AC 230V Densomat, round BLC, 141 cm useful reach

Part Number 0.820.0072

Oralix AC 230V Densomat, round BLC, 186 cm useful reach

Part Number 0.820.0070

Oralix AC 230V Densomat, rectangular BLC, 141 cm useful reach

Part Number 0.820.0082

Oralix AC 230V Densomat, rectangular BLC, 186 cm useful reach

Part Number 0.820.0079



Oralix AC Secondent

X-ray system for intraoral and extraoral radiography with Secondent timer.

- Exposure time range from 0.03 to 2.5 s
- Selector knob with 19 settable exposure times
- Wall support, 45 cm (141 cm useful reach) or 90 cm (186 cm useful reach) extension arm

Oralix AC 230V Secondent, round BLC, 141 cm useful reach

Part Number 0.820.0076

Oralix AC 230V Secondent, round BLC, 186 cm useful reach

Part Number 0.820.0074



Oralix AC mobile

Oralix AC intraoral radiographic system with Densomat timer, round BLC and mobile stand.

Oralix AC 230V mobile

Part Number 0.820.0102

Subsystems



Oralix AC subsystem for 2nd tubehead with round or rectangular BLC to be connected to an existing Densomat unit.

Oralix AC subsystem, round BLC,
extension arm 45 cm

Part Number 0.820.0001

Oralix AC subsystem, round BLC,
extension arm 90 cm

Part Number 0.820.0002

Oralix AC subsystem, rectangular BLC,
extension arm 45 cm

Part Number 0.820.0003

Oralix AC subsystem, rectangular BLC,
extension arm 90 cm

Part Number 0.820.0004

Components



DENSOMAT Dental Timer

Densomat timer with microprocessor to control the Oralix AC X-ray tubehead. The timer is able to control also a second Oralix AC X-ray tubehead

- Flat keyboard for the programmed selection of exposure time based on both teeth and patient size
- Numerical-digital indication of the exposure time
- Manual setting of the exposure time from 0.03 to 2.5 s.
- Setting of the sensitivity of radiographic films
- Setting for digital and conventional radiographs
- Automatic compensation of mains voltage fluctuations
- Automatic control of tube thermal load
- X-ray control push button with a 3 m extensible cable

Densomat Dental timer 230V

Part Number 0.820.0199

Optional module for controlling a second tubehead

Part Number 0.820.0256



SECONDENT Dental Timer

Timer Secondent with microprocessor to control the Oralix AC X-ray tubehead

- Manual setting of the exposure time from 0.03 to 2.5 s.
- Automatic compensation of mains voltage fluctuations
- Automatic control of tube thermal load
- X-ray control push button with a 3 m extensible cable

Secondent Dental Timer 230V

Part Number 0.820.0200



X-ray tubehead

Oralix AC 230V X-ray tubehead

- 65 kV 7.5 mA
- Inherent filtration 2mm Al equivalent
- Focal spot 0.7mm (IEC 336/1982)
- Grid control
- Compatible with round BLC or rectangular BLC

The BLC is NOT included.

Oralix AC 230V X-ray tubehead

Part Number 0.820.0194



Arms

Oralix AC extension arm 45 cm
(141 cm useful reach) or extension arm 90 cm
(186 cm useful reach)

Extension arm 45 cm

Part Number 0.820.0195

Extension arm 90 cm

Part Number 0.820.0196



Articulated arm

Articulated arm for wall mounting

Part Number 0.820.0197

Articulated arm for unit mounting
with 5 m cable

Part Number 0.820.0198



Wall support

Wall support for Oralix AC

Part Number 0.820.0201



Mobile stand

Mobile self-supporting stand

Part Number 0.820.1579



Beam Limiting Cone (BLC)

Two types of Beam Limiting Cone (BLC) for Oralix 65, Oralix AC: circular section 6 cm, length 20 cm with lead-shielded white body or rectangular section, 35x45 mm, length 20 cm with rotating body

Rectangular BLC for Oralix AC

Part Number 0.820.0180

Round BLC for Oralix AC

Part Number 0.820.0181

Expert DC configuration

	Expert DC 140cm useful reach	Expert DC 165cm useful reach	Expert DC 191cm useful reach
Arms			
Exstension arm 38 cm	●	○	○
Exstension arm 63 cm	○	●	○
Exstension arm 89 cm	○	○	●
Beam limiting cone			
Round beam limiting cone length 20cm	●	●	●
Round beam limiting cone length 30cm	○	○	○
Rectangular beam limiting cone length 20cm	○	○	○
Rectangular beam limiting cone length 30cm	○	○	○
Accessories			
Exposure hand-switch	●	●	●
User and Service Manuals	●	●	●
Template for timer	●	●	●
Coiled-cord exposure switch	○	○	○

● standard ○ optional

Oralix AC configuration

	Oralix AC DENSOMAT rect.	Oralix AC DENSOMAT round	Oralix AC Secondent	Oralix AC Mobile
Timer				
Densomat dental timer	●	●	○	●
Secondent dental timer	○	○	●	○
Beam limiting cone				
Round beam limiting cone length 20cm	○	●	●	●
Rectangular beam limiting cone length 20cm	●	○	○	○
Accessories				
Mobile stand	○	○	○	●
Wall support	●	●	●	-
Exposure hand-switch	●	●	●	●
User and Service Manuals	●	●	●	●
Template for timer and wall support	●	●	●	-

● standard ○ optional - not available

Intrao

A picture is worth a 1000 words

Communication has become the milestone of the present society; we all recognize the importance of this tool in every application and new professions have been created to improve the efficacy of the message. But in some cases words are not enough to express our thoughts and an image can help us much more than a speech.

With the Gendex cameras you can further improve the relationship with your patient, placing communication and self-explanatory images side by side.



ral Cameras



AcuCam® Concept IV / IV FWT

The diagnostic detail within hand's reach

The AcuCam Concept IV/IV FWT intraoral cameras have been developed to meet the highest expectations of dental professionals for image quality, ease of use and reliable, long term operation.

Features

- Top rated Intra-oral camera
- Ergonomically designed handpiece with slim distal end for complete intraoral access
- State-of-the-art optical system with an adjustable focus range of 1 mm to infinity
- CCD sensor of high resolution
- True colour reproduction
- Wide angle of view (62°) and retroflex viewing (97.5°)
- Three fixed focus settings-macro, wide angle, close-up and extraoral
- Macro focus adjustable to 85x magnification
- Image capture through a computer

■ CE Medical device
conform to the directive 93/42/CEE



AcuCam



AcuCam Concept IV FWT

Digital Intraoral camera with FireWire technology.

- Ergonomically designed handpiece with slim distal end for complete intraoral access
- Best digital image quality and simplest installation and operation with a computer by eliminating the need for a video capture board
- Compact versatile docking station, with a small footprint, that output digitally directly to a computer system through the fast FireWire or i.LINK connection (IEEE1394a)
- Easily transportable between operatories, thanks to the "Hot Plug" connection, always ready to use
- Cable 2 m

AcuCam Concept IV FWT

Part Number 0.820.0155



AcuCam Concept IV

Intraoral Video Camera system with universal docking station.

- Ergonomically designed handpiece with slim distal end for complete intraoral access
- Easily integrated into many configurations
- Advanced Freeze Frame capability
- Operator control panel on the docking station

AcuCam Concept IV

Part Number 0.820.0149

Components



Handpiece

Ergonomically designed for complete intraoral access

- Sensor CCD 1/4"
- Resolution 80 lp/mm
- True colours
- Depth of vision from 1 mm to infinity (macro, wide angle, close-up and extraoral)
- Material: Stainless steel

Concept IV / IV FWT handpiece with cable of 2 m

Part Number 0.820.0134



Docking Station

The Concept IV FWT docking station can be mounted inside cabinet, under a counter top or on the wall, the mounting bracket is included as part of basic system

- Digital output IEEE-1394A, Firewire, i.link
- Analog output 480 TV lines

AcuCam Concept IV FWT Docking Station
(without handpiece)

Part Number 0.820.0356



Docking Station

Universal Concept IV docking station with membrane control panel. It can be easily integrated into stand alone video configuration, stand alone digital configuration and any existing computer network with video capture capability

AcuCam Concept IV Docking Station
(without handpiece)

Part Number 0.820.0347

Subsystems & Consumables



Footswitch

Wired footswitch with two switches for freezing and saving the image on the computer

AcuCam Concept IV FWT footswitch

Part Number 0.820.0337



Disposable sheaths

Disposable sheaths for Concept IV FWT (500 pcs)

Part Number 0.820.0350

Disposable sheaths for Concept III (500 pcs)

Part Number 0.820.0361

Disposable sheaths for Insight 20/20 (500 pcs)

Part Number 0.820.0362

Disposable sheaths for Polo (500 pcs)

Part Number 0.820.0363

Accessories

FireWire PCI card for Desktop

Part Number 0.820.0340

FireWire PCI card for Laptop PC

Part Number 0.820.0341

Concept IV footswitch and adapter Concept IV footswitch to PC

Part Number 0.820.0339

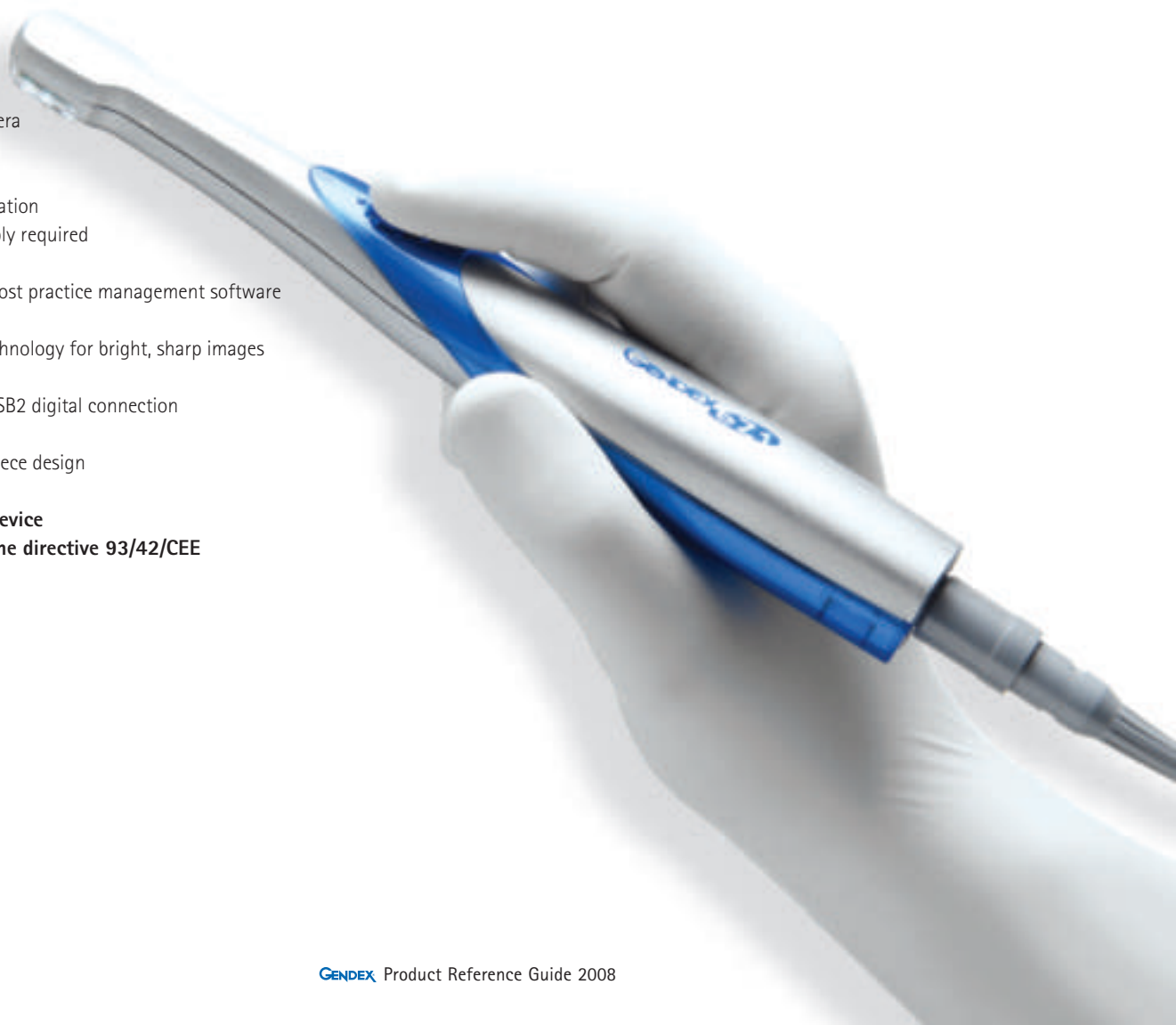
eZ1

The new easy way to investigate, document, communicate and connect.

Intraoral videocamera that combines the latest video technologies to provide you with an exceptional tool for patient education, case acceptance, and improved patient communication

Features

- Innovative "Soft Touch" control area to freeze and capture images eliminates the need for a footswitch
- Lightweight ergonomic handpiece
- Autofocus adjustment
- Activation controlled automatically from the camera holster
- No docking station or power supply required
- Works with most practice management software
- Latest LED technology for bright, sharp images
- High Speed USB2 digital connection
- Stylish handpiece design
- **CE Medical device conform to the directive 93/42/CEE**



Components



eZ1 with USB2 adapter

This system displays intraoral examinations on Personal Computers using a standard USB2 port.

eZ1 PAL USB2 Camera System

Part Number 0.820.1701



eZ1 with Memory Docking Station

Intraoral camera with memory docking station (for connection to TVs).

This system displays intraoral examinations on standard TV sets or S-video monitors. The docking station is capable of storing 1 full screen image or 4 split screen images.

eZ1 PAL Camera System with Memory Docking

Part Number 0.820.1700



Handpiece

eZ1 PAL Camera Handpiece without cable

Part Number 0.820.1705



USB2 Adapter

eZ1 USB2 Adapter

Part Number 0.820.1706



Memory Docking Station

Docking station with onboard memory. It is capable of storing 1 full screen image or 4 split screen images

eZ1 Memory Docking Station, 2.5 m

Part Number 0.820.1703

eZ1 Memory Docking Station, 5 m

Part Number 0.820.1704

eZ1 Camera Cable, 2 m only

Part Number 0.820.1697

eZ1 Camera Cable, 5 m only

Part Number 0.820.1698



Holster

eZ1 Holster

Part Number 0.820.1702

Acucam Concept IV/IV FWT configuration

	AcuCam Concept IV FWT	AcuCam Concept IV
Docking station including camera holster	●	●
AcuCam Concept IV Handpiece with cable of 2 m	●	●
Footswitch for image freeze and grab	●	●
Power Supply Module with power cord	●	●
Holster long connecting cable	●	-
Triple Shielded FireWire Cable	●	-
Firewire card for PC	○	-
Video Capture Board	-	○
Disposable sheaths (500 pieces)	●	●
Imaging software	●	○
Software Driver CD-Rom	●	-
User's Manual	●	●
Mount Template	●	●

● standard ○ optional - not possible/not applicable

eZ1 configuration

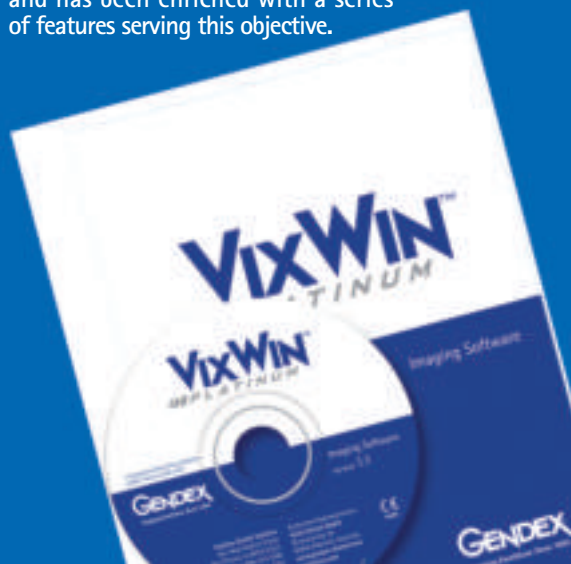
	eZ1 Memory docking USB2	eZ1 Memory docking
Camera Handpiece with built-in light	●	●
USB2 adapter (eZ USB2)	●	○
Docking station with onboard memory (eZ MEM)	○	●
Handpiece holster	●	●
Power supply	-	●
5 meters linking cable for Handpiece and the eZ MEM	-	●
S-Video cable, 1.83 meters (6 feet)	-	●
500 disposable barrier sheaths	●	●
Software Driver CD-Rom	●	-
User's Manual	●	●
Dual-Lock pad	●	●

● standard ○ optional - not possible/not applicable

Enhanced image quality

With the evolution of digital imaging acquisition techniques seen in the recent years, it has become necessary for the dentist to be equipped with a powerful software package that enables efficient and complete image analysis combined with ease of use.

VixWin Platinum has been developed to respond to the needs of the modern dentist with the aim of providing a tool that improves and enhances practice's efficiency and potential and has been enriched with a series of features serving this objective.



Software



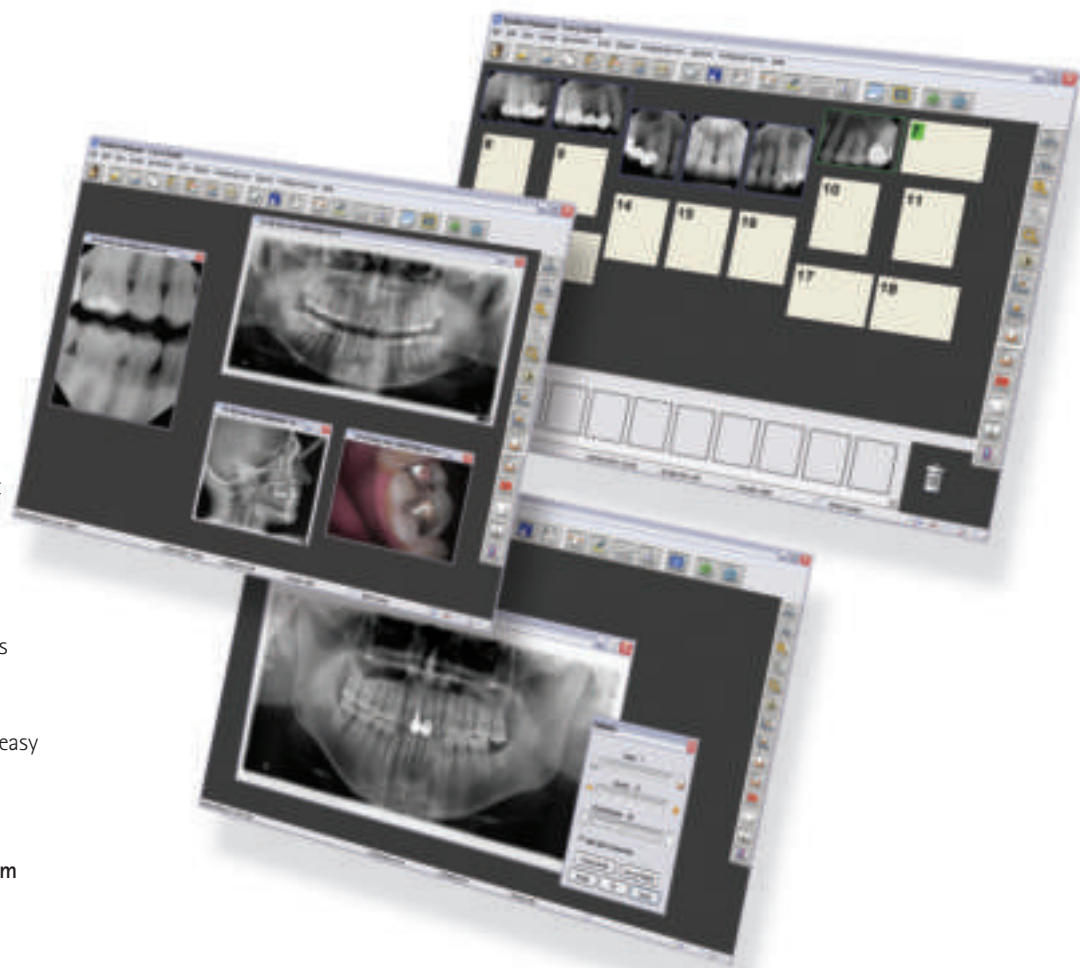
VixWin™ Platinum

The most advanced release in the powerful
Gendex Imaging Software series!

Powerful diagnostic and time-saving tools for an accelerated and easy workflow with detailed radiographic digital images in any practice.

Features

- Innovative icon graphics and customizable Graphical User Interface (GUI) for an Intuitive and User-Friendly software environment.
- Control, treatment, analysis and saving of X-ray digital images from DenOptix, Visualix, Orthoralix digital imaging systems
- Software is easy to install and can be interfaced with most major practice management software packages
- Image analysis tools enhance edge contrast and enable easier and faster image analysis to optimize digital image contrast and quality by easily adjusting contrast, brightness and Gamma values
- Tools for geometric measurements (lines and angles)
- Advanced functions to permit an easy and accelerated workflow
- CE 0086 Medical Device conform to the directive 93/42/CEE





VixWin Platinum

VixWin Platinum is the general purpose dental and maxillo-facial image analysis and management software developed by Gendex in order to enhance image quality and add diagnostic value to digital images. It allows capture, display, treatment, analysis and storage of digital radiographic images from Gendex DenOptix, VisualiX, Orthoralix digital imaging systems. It can also handle other types of images, such as colour images from Intra-oral and extraoral dental cameras (e.g. the Concept IV series and eZ1 series) or from optical scanners and still cameras. VixWin Platinum works under Microsoft Windows 2000 and Windows XP-PRO

VixWin Platinum imaging software

<i>Part Number</i>	<i>1.005.9054</i>
--------------------	-------------------



VixWin DICOM

VixWin DICOM is a software from Gendex aimed at extending VixWin's powerful applications in a DICOM Standard environment. It enables the integration of Gendex dental imaging products with the DICOM server allowing easy sharing, distribution and viewing of digital images. VixWin DICOM is DICOM 3.0 compatible and supports all Gendex products running with VixWin PRO (ver. 1.2).

VixWin DICOM - 1 licence

<i>Part Number</i>	<i>0.820.0276</i>
--------------------	-------------------

*DICOM price depends on the number of requested licences, please contact a Gendex Sales Representative for further information.

Perfect development brings outstanding results

To get clear and detailed X-Ray images a good radiological equipment is not enough. The entire process must be in tune in all its phases from the beginning to the end.

The development of the film is the last step in the whole process but it plays an important role.

Excellent X-Ray images need an adequate development; a good image which is not properly developed can be unusable.

Clarimat 300 automatic film developer grants constant outstanding results and emphasizes the high performance of the radiological unit.



Developers



Clarimat 300

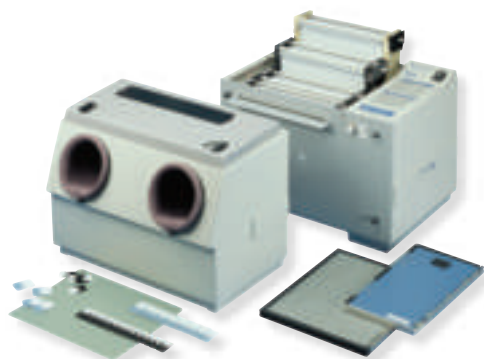
Automatic processor for intraoral and extraoral radiographic films

Features

- Easy of installation and ease of use
- Simple operation: processing involves only pressing a button and placing the film
- Automatic operation: simple electronic control of all major functions of the machine, including timing, temperature, circulation and fluid replenishment
- Prolonged machine service life: an automatic stand-by facility stops the machine after 8 minutes of working, then maintaining the correct temperature for immediate further use when required
- Innovative film transport system: a unique patented film transport system in which film is held stationary between two belts as it travels through the solution, avoiding the risk of mechanical damage
- Dedicated chemicals: high quality, specially formulated and produced chemicals for optimum performance and prolonged life. They are available in a ready mixed solution for use straight from the can
- Quick and easy maintenance
- Daylight loader



Consumption articles



Clarimat 300

Clarimat 300 automatic developer for Intra-oral, panoramic, and cephalometric radiograph films (size 24x30 cm max.)

- Water feeding with 3/4" connection.
- Working times: pre-heating 10-15 minutes, processing time 4 minutes, film loading time 36 seconds (15x30 cm or 24x30 cm; 0.83 cm/s), stand by 8 min after reset of start button.
- Supply does not include developing and fixing chemicals.

Clarimat 300 automatic film processor

Part Number 0.820.0006

Clarimat 300 provided with module for automatic reintegration of the chemicals

Part Number 0.820.0007



Consumption articles for Clarimat 300

Clarimat automatic replenishing module

Part Number 0.820.0210

Day-light loader for Clarimat

Part Number 0.820.0209

Clarimat system cleaner

Part Number 0.820.0252

Clarimat Gendex fast process chemicals.
It includes: 5 l of developing chemicals and 5 l of fixing chemicals

Part Number 0.820.0251

Consumption articles for Dry-o-Mat and GXP

Dry-o-Mat chemicals (x10 sets)

Part Number 0.822.0082

GXP Gendex fast processor chemicals.
It includes: 10 l of developing chemicals and 11.4 l of fixing chemicals

Part Number 0.820.0355

GXP processor cleaning solution

Part Number 0.820.0354

GXP processor clean up films (12 sheets x pkg)

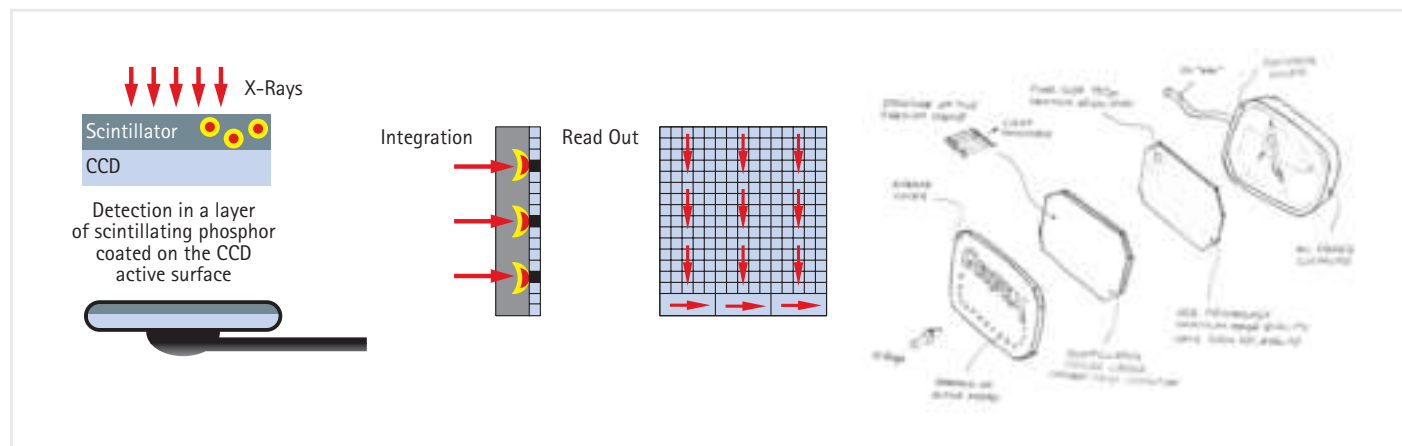
Part Number 0.820.1287

Technology explained

Technology explained

CCD sensor

High Definition Imaging Technology



Advantages

VisualiX eHD is a digital sensor based on the CCD technology that guarantees high image quality and system reliability.

It is designed with a Caesium Iodide scintillator, grown vertically on a carbon layer. The vertical growth process generates a columnar microstructure, which drives light directly on the CCD surface, reducing loss and guaranteeing unsurpassed image quality.

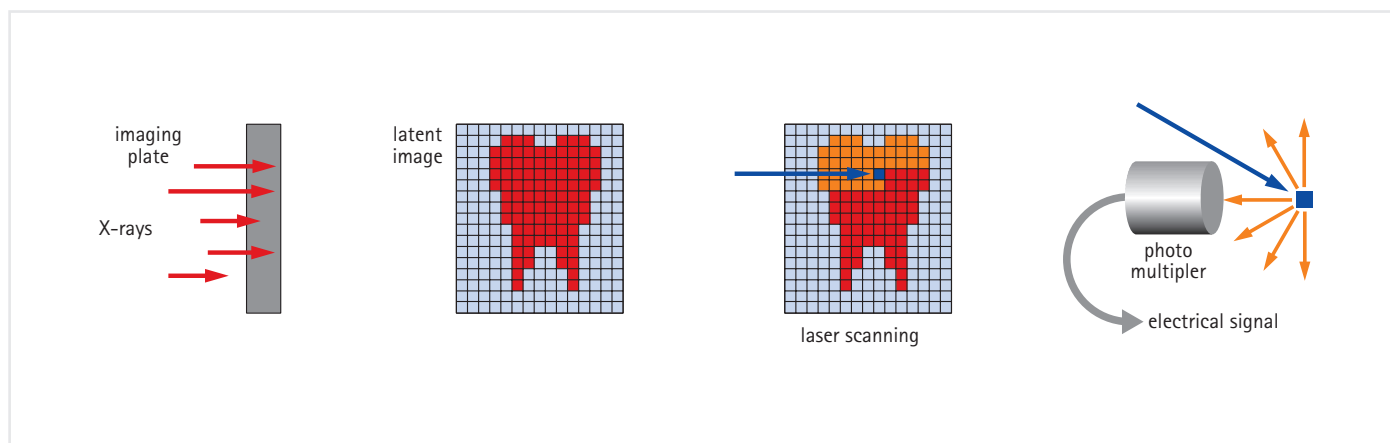
In addition, to achieve higher resolution images, the pixel size has been reduced to $19.5 \mu\text{m}$ providing a theoretical resolution of roughly 26 lp/mm.

VisualiX eHD is USB2 compatible, thus minimizing the time from image acquisition to image appearance on the computer screen.

- Instant imaging
- High definition images
- Radiation dose significantly reduced
- Does not require X-ray hardware modification
- Consents better informed clinical decisions
- Eliminates the need for chemicals and the dark room
- Electronic storage and management of data

PSP technology

Photostimulable Phosphor Plate Technology



Advantages

PSP utilizes reusable phosphor coated imaging plates to capture X-ray emissions. The wireless, flexible PSP plates match the sizes and are positioned in the same manner as traditional film. After an X-ray emission, the phosphor plate captures the intra- or extraoral image.

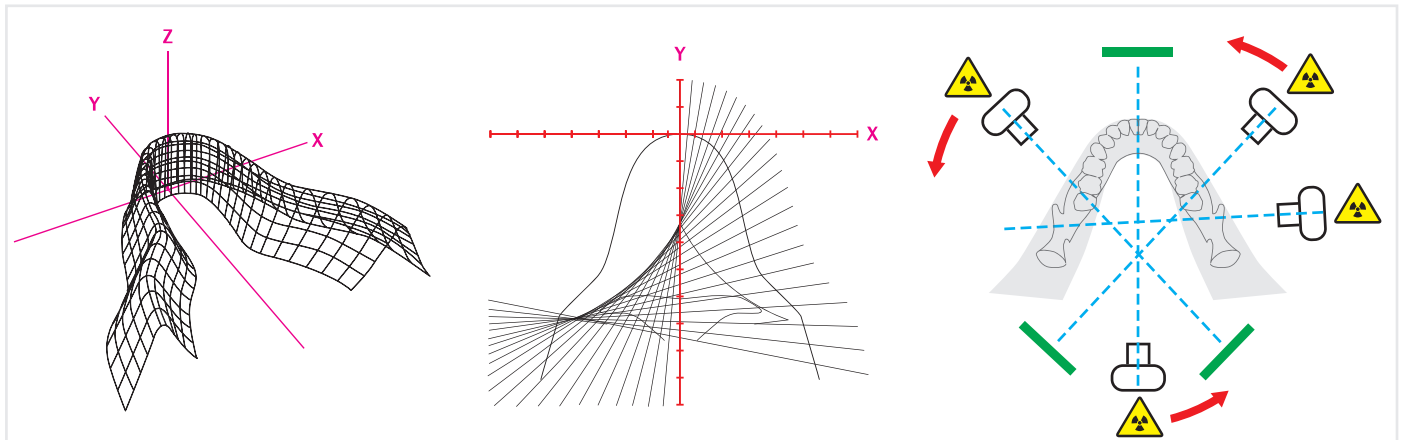
Using the advanced laser scanning of the DenOptix QST, the latent image is converted into a highly diagnostic digital image.

This image is optimized using the features and tools of advanced digital imaging software, such as Gendex VixWin Platinum. After scanning, the PSP imaging plates are "cleared" or "erased" via light for reuse.

For panoramic and cephalometric imaging, the phosphor plate operates in the same manner as existing film but without the need for an intensifying screen.

- Film-like digital system, without chemicals
- Eliminates the need for the dark room
- Does not require X-ray hardware modification
- Consents better informed clinical decisions
- Radiation is significantly reduced
- No change of working routine
- Electronic storage and management of data

Orthoralix Articulated kinematics



Advantages:

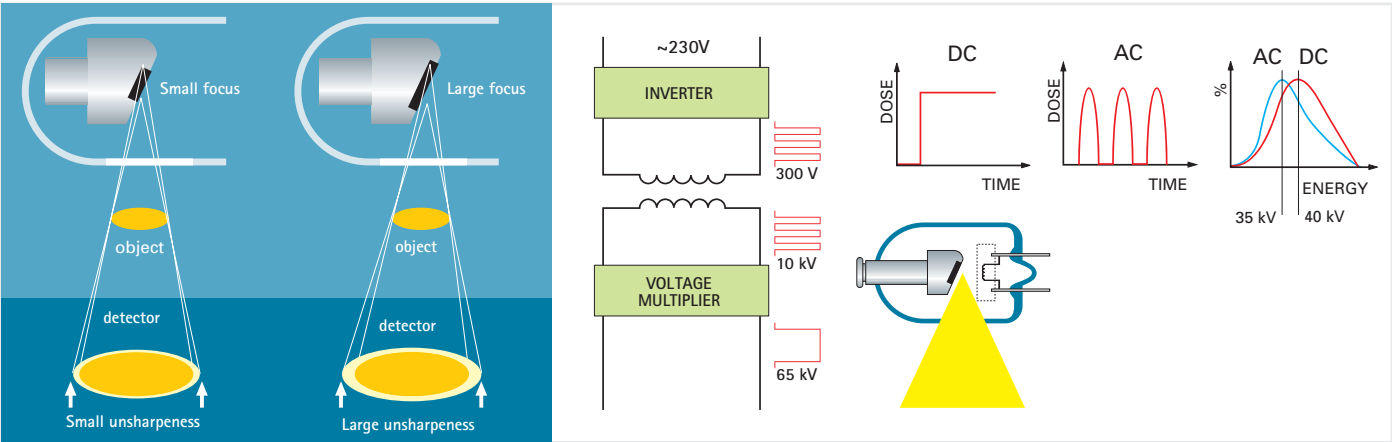
Important findings are adopted for best results:
-Standard form of dentition and mandible for rotational panoramic radiography (DMFR 1989, Vol. 18, May).
-A method to maintain a constant magnification factor throughout the exposure of rotational panoramic radiography (DMFR 1989, Vol. 18, November).

- Free movements of the X-ray tubehead allow better focal trough in terms of shape and thickness
- Constant magnification factor throughout the exposure
- Minimal distortion effect on the images

Orthoralix operation:

3 robotic stepping motors generate the movements.
X-ray head is completely free to rotate and relocate itself (forward and backward, right and left).
Cassette speed can be modulated (only conventional film systems)

Expert DC focal spot and high frequency

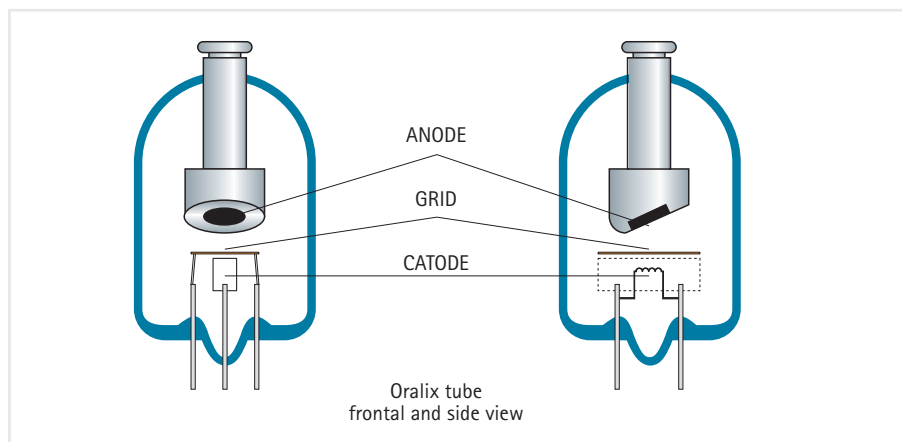


DC tubehead

The small focal spot provides outstanding image quality, which distinguishes itself by unrivalled sharpness, negligible distortion and maximum detail recognition.

Constant potential output allows excellent gray scale definition with reduced soft radiation imparted to the patient and provides superior diagnostics. Additionally, 65 kV output provides excellent image contrast.

Oralix AC technology

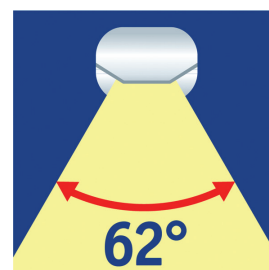


Grid action

In the Oralix tube a grid is placed between the cathode and the anode, influencing the movement of the electrons.

By means of the grid action, only the X-rays useful to the image formation are produced, thus allowing a reduction of the X-ray dose given to the patient.

AcuCam Concept IV/IV FWT technology



Angular field of 62°

The wide angular field enables up to seven teeth to be included in a single image.



Retroflex vision with an angle of 97,5°

This unique feature enables the distal surface of the upper molars to be viewed with ease.

Depth of vision

Focal length from 1 mm to infinity. In this way it is possible to film from the patient's face and smile to the distal surface of his 3rd upper molar.

FireWire technology:

FireWire (IEEE 1394A) is one of the fastest data transfer standards ever developed. Originally conceived by Apple Computers for digital video streaming, FireWire is the de facto industry standard for multimedia peripherals such as digital video cameras. It features simplified cabling, hot "plug and play", and unsurpassed image transfer speed. Digitizing the camera signal in the Concept IV FWT docking station and passing it to the computer via the FireWire connection eliminates the need for a traditional video capture card, that typically degrades the video signal when converting it from analog to digital. The direct-digital FireWire connection delivers the highest level of clarity and picture quality that makes it great for use with the Concept IV camera.



Installation requirements and dimensions

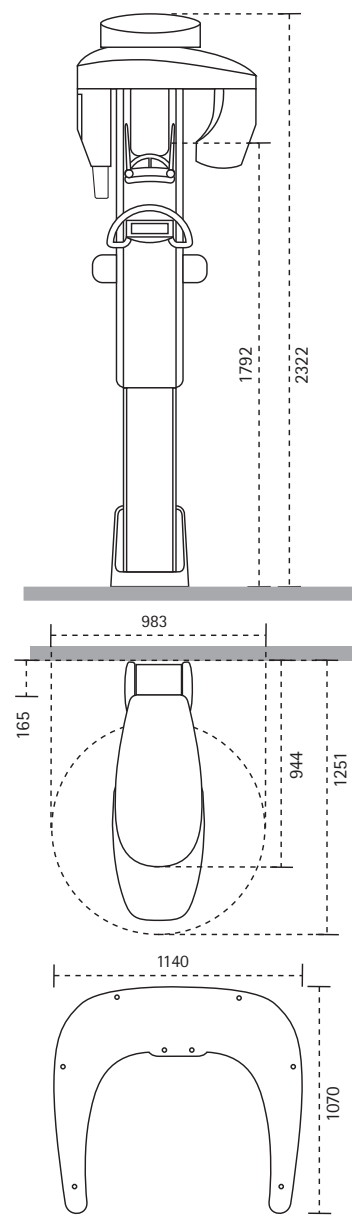
h
an

Installation requirements and dimensions

Installation requirements and dimension

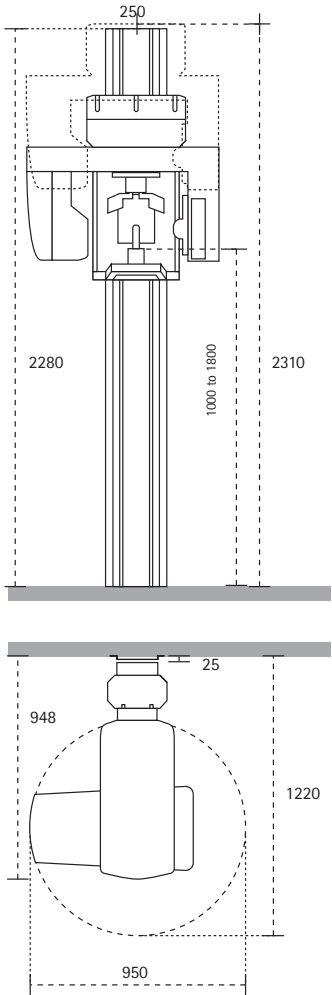
Orthoralix 8500/8500 DDE

Dimensions in mm
Weight 115 kg

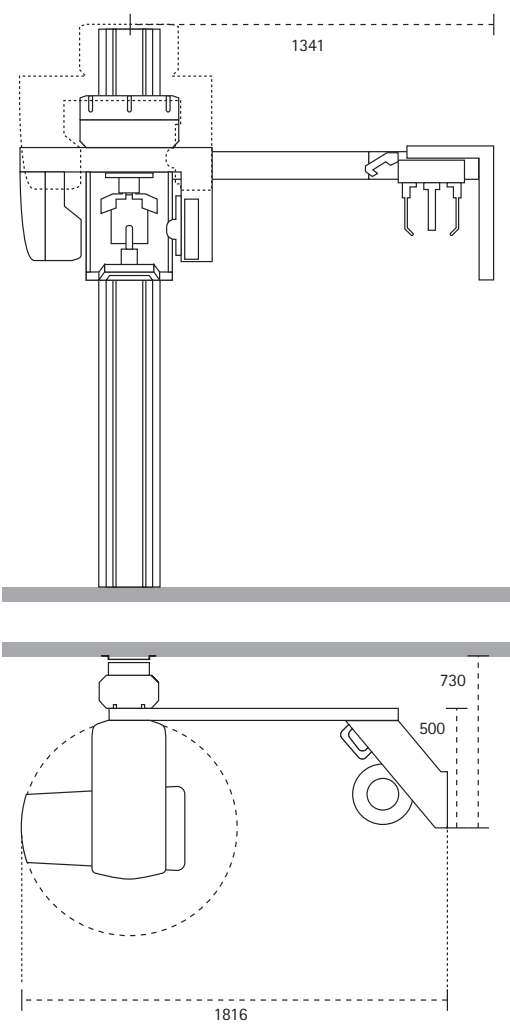


Orthoralix 9200

Dimensions in mm
Weight 195 kg



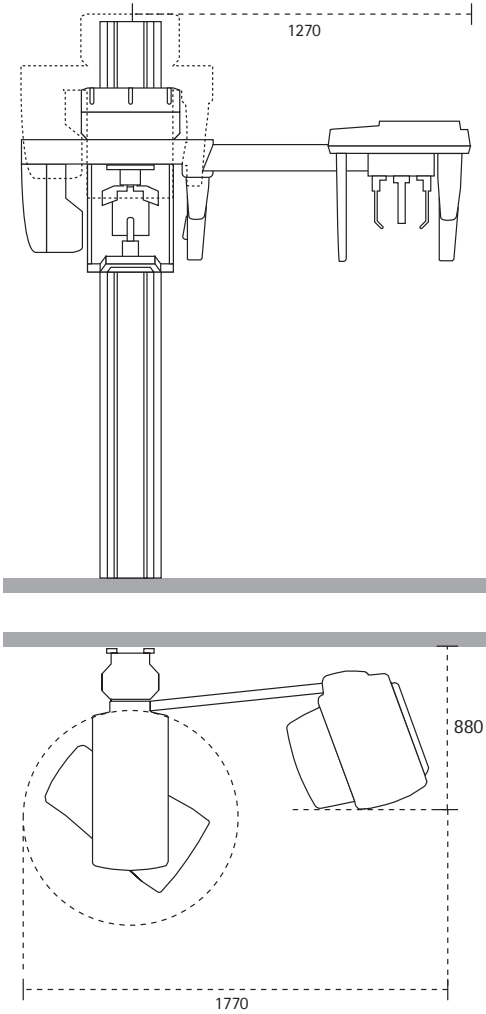
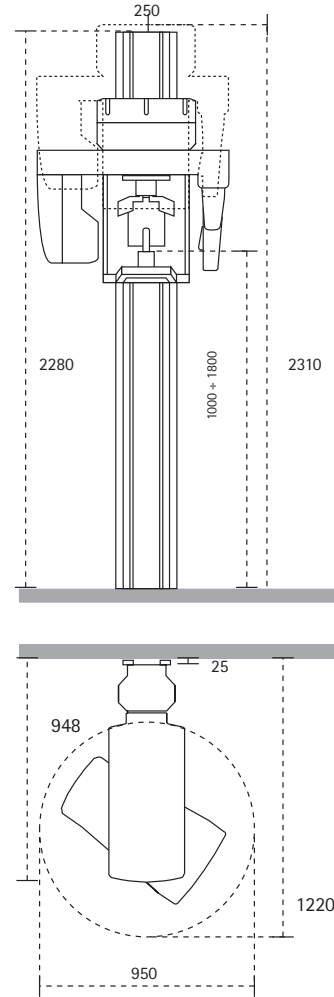
Weight 215 kg



Orthoralix 9200 DDE

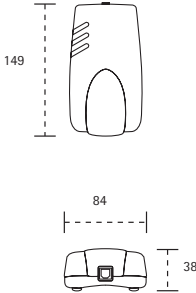
Dimensions in mm
Weight 195 kg

Weight 217 kg



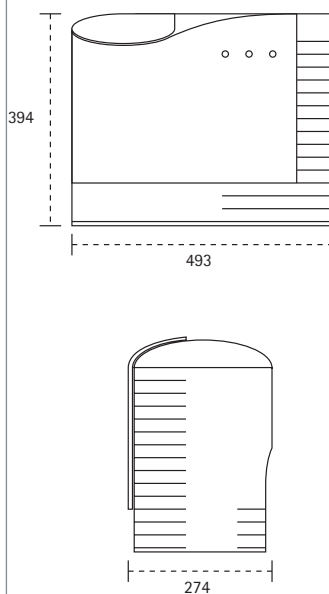
VisualiX eHD

Dimensions in mm (IME dimensions)
Weight 300 g (IME and sensor)



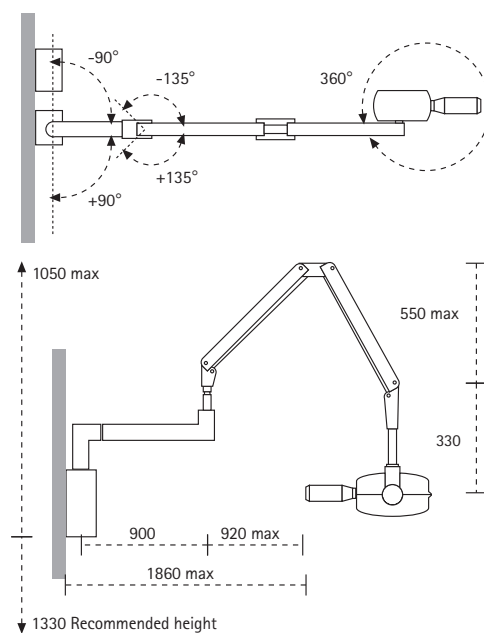
DenOptix QST

Dimensions in mm
Weight (empty) 16 kg

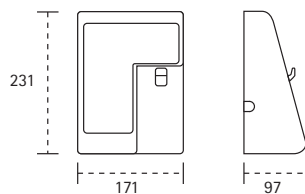


Oralix AC

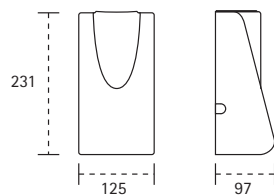
Dimensions in mm
Weight: Tube head 6,3 kg (without collimator),
Folding arm 7,5 kg,
Extension arm 3,5 kg (45 cm) 5 kg (40 cm)
Wall support 1,5 kg, Timer 2 kg



Dental timer

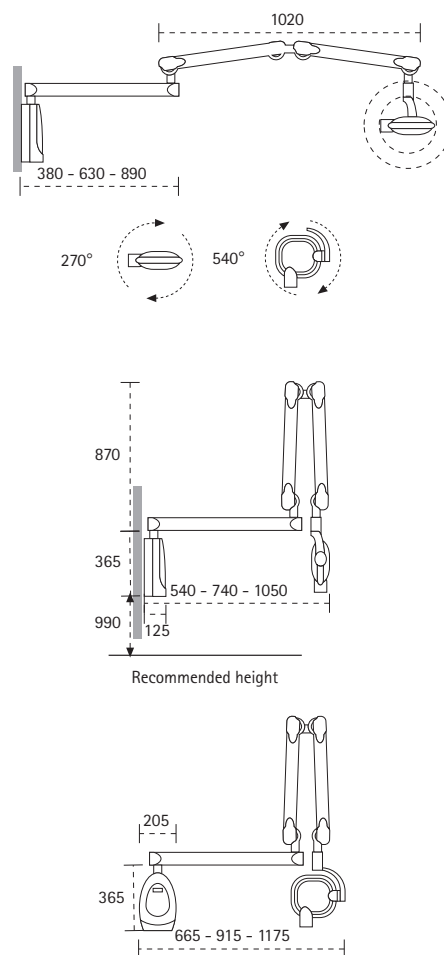


Wall support



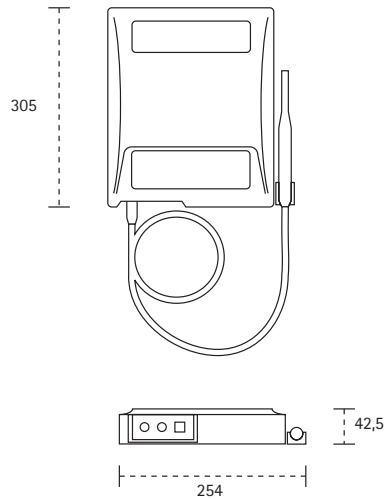
Expert DC

Dimensions in mm
Weight 5,9 kg



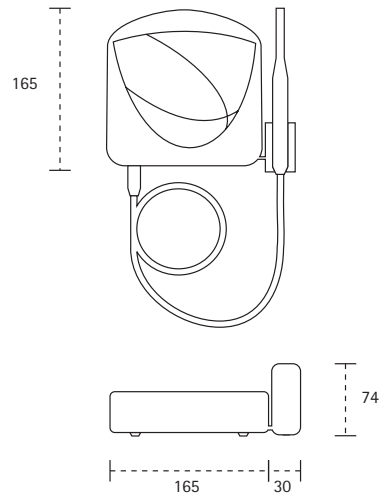
Acucam Concept IV

Dimensions in mm
Weight 3,1 kg



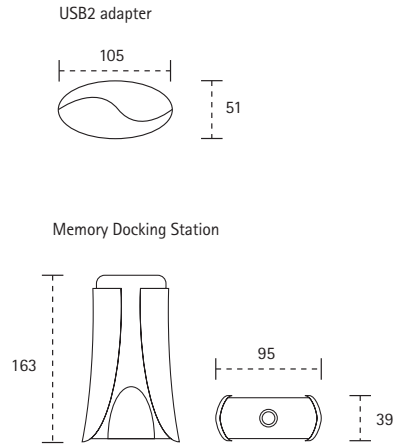
Acucam Concept IV FWT

Dimensions in mm
Weight 1,5 kg



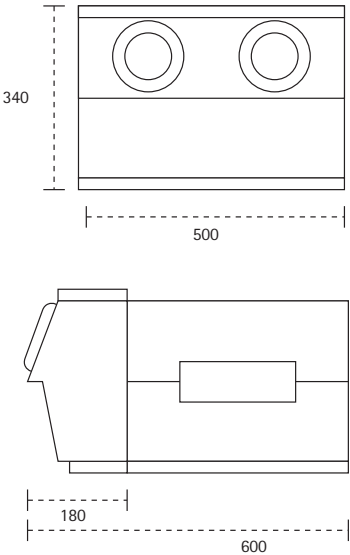
eZ1

Dimensions in mm
Weight 200 g (with USB2 adapter)
Weight 410 g (with Memory Docking Station)



Clarimat 300

Dimensions in mm
Weight 21 kg



General sales and Warranty conditions

General sales and Warranty conditions

KaVo General sales and warranty conditions for Gendex products

1. General

The following Conditions apply to all commercial transactions made by KaVo Dental GmbH (in the following: KaVo) with businesses, commercial enterprises and public corporations or institutions. They are not applicable to consumers as defined in EC Guideline 1999/44/EC of May 25th, 1999.

No terms and conditions other than the Conditions contained herein shall be binding upon KaVo unless accepted in writing by KaVo's Manager. All terms and conditions contained in any prior oral or written communication, including, without limitation, the Buyer's purchase order, which are different from or in addition to the terms and conditions herein, are hereby rejected and shall not be binding on KaVo. No contract shall become binding until KaVo accepts the Buyer's order by a written Acknowledgment of Acceptance. KaVo's employees or agents are not authorized to make any oral representations which go beyond the written agreement.

2. Products

2.1 KaVo reserves the right to make technical alterations, in particular improvements, to its Products without prior notification as far as they do not affect the technical function - hence deviations from the specifications contained in catalogues, advertising material etc. are possible.

2.2 KaVo reserves the right at all times to cease manufacture of products or to make substitution as a result of new constructional methods.

3. Delivery

3.1 Unless otherwise agreed in writing, Delivery is made ex-factory Warthausen (EXW Incoterms 2000). Delivery of the Products shall occur when they are made available to the Buyer or its carrier at KaVo's warehouse or when KaVo notifies the Buyer that the Products are available for pick-up. Delivery to any other place is at the Buyer's risk and cost.

3.2 The time of Delivery given by KaVo is given as accurately as possible but is not guaranteed. Unless KaVo has expressly promised a specific Delivery date by a separate declaration in writing, KaVo shall not be liable for any damage, loss or expense arising out of any delay in Delivery of the Products or failure to give notice of delay. In the event that Delivery is overdue for more than six weeks because of KaVo's fault, the Buyer's sole remedy is - unless in case of injury of life, body or health or a deliberate act or gross negligence - to cancel its order by written notice.

3.3 Acts of god, non-delivery from outside suppliers, governmental action, strikes, business disturbances, or any similar hindrances will reduce our delivery commitment; and KaVo is entitled to withdraw in whole or in part from the order.

3.4 Genuine defective items will be replaced or repaired, as KaVo considers appropriate. In the event this re-performance should fail, the Buyer is - according to the legal provisions - entitled to cancel the contract or to claim for an adequate price decrease.

4. Prices, Payment

4.1 All prices are to be understood ex-factory Warthausen, excluding packing, freight, value added tax (or similar) and customs duties, however, normal cardboard packaging is included.

4.2 The Price of the Product shall be the price quoted by KaVo and confirmed in the Acknowledgment of Acceptance.

4.3 KaVo reserves the right to increase the Price of the Products to reflect any increase in the cost due to any change in delivery dates, quantities or specifications for the Products which is requested by the Buyer.

4.4 If through no fault of KaVo the Delivery date is more than two month later than the date of the Acknowledgment of Acceptance, KaVo can claim the price listed in the price list valid at the date of delivery.

4.5 Prices quoted do not include VAT or import duties payable by KaVo on the import into the Buyer's country, and will be charged in addition at the rate ruling at the date of Delivery.

4.6 Unless otherwise agreed upon in the Acknowledgment of Acceptance, accounts are net and payable within 30 days of the invoice date.

4.7 Where both parties agree that Delivery is by instalments, KaVo may issue separate invoices for each instalment, each invoice being payable separately in accordance with no. 4.6 above.

4.8 Without limitation to any other right or remedy available to KaVo, KaVo shall be entitled in the event of any breach of no. 4.6 above and without any liability whatsoever to the Buyer, to stop or cancel Delivery of any goods sold or agreed to be sold to the Buyer.

4.9 If the buyer falls in arrears with payment, KaVo is entitled to claim interest on the overdue amount in accordance with sec. 288 of the German Civil Code (= 8% p.a. above the basic interest rate of the European Central Bank).

5. Deficiencies and Warranty

5.1 When goods are dispatched at the risk of KaVo, any transit damage should be notified to the carrier immediately on receipt. In such case, KaVo will compensate for all damage acknowledged by the insurance company.

5.2 Possible shortages will be compensated for by further delivery or the issuing of a credit note.

5.3 Warranty claims will be considered only if such claims are reported in writing, as follows:

- Discernible defects - without delay, at the latest one week, after delivery.

- Indiscernible defects - one week after discovery.

5.4 Genuine defective items will be replaced or repaired, as KaVo considers appropriate. In the event this re-performance should fail, the Buyer is - according to the legal provisions - entitled to cancel the contract or to claim for an adequate price decrease.

5.5 The warranty does not apply to parts worn as result of normal wear and tear, nor to damage caused by overloading or misuse.

5.6 The Buyer's rights to warranty lapse after a certain period after the date of delivery as described in the appendix of this document.

6. Property, Transfer of Title

6.1 Notwithstanding Delivery of the Products and the passing of risk of damage or loss in the Products, the property in the Products shall remain solely and absolutely in KaVo as legal and equitable owner. If the law of the country in which the products are shipped does not allow a full reservation of ownership in the delivered products, the Buyer is obliged to provide a purchase price security interest or any other appropriate security to KaVo.

KaVo retains ownership in the Products or the corresponding security until the Buyer has paid in full of the price of the Products and all other products sold or agreed to be sold by KaVo to the Buyer for which payment is then due.

6.2 KaVo shall be entitled at any time during which it retains ownership or a security in the Products to require the Buyer to deliver up the Products to KaVo and, if the Buyer fails to do so forthwith, to enter upon any premises of the Buyer or any third party where the Products are situated and repossess the Products in accordance with the provisions of the applicable local law.

6.3 Under the above presuppositions, the buyer is entitled to re-sell existing goods in the course of his normal business activities. However, the Buyer assigns to KaVo all claims and rights he gets by such transaction against the Buyer's customer.

6.4 Should payment fall overdue, the buyer is obliged to inform its customers about the assignment of all rights and claims to KaVo and to place at KaVo's disposal all necessary documents to their assertion.

7. Traceability

For traceability purposes the Buyer undertakes to maintain customer files, containing at least the following information: name and address of customer, type number and serial number of installed and serviced equipment, installation, modification and maintenance reports. GENDEX, responsible for products conformity according to CEE directive nr. 93/42, shall have the right, at its own discretion, to obtain copies of the above mentioned customer files, at any time, within two weeks from the request.

8. Governing Law, Jurisdiction

8.1 These Conditions and all contracts made hereunder are subject to German Law. Place of performance is Biberach/Riß for both parties.

8.2 If any provision of these Conditions is held by a competent authority to be invalid or unenforceable in whole or in part, the validity of the other provisions of these Conditions and the remainder of the provisions in question shall not be affected thereby.

8.3 Any dispute, controversy or claim arising out of or relating to these Conditions or contracts to which these provisions apply, are subject jurisdiction of the German Courts. Place of Litigation is Ravensburg, Germany. KaVo however reserves the right to bring a complaint against the Buyer before a court having jurisdiction in the area of the Buyer's residence.

KaVo Dental GmbH
D-88400 BIBERACH

Appendix: Warranty Conditions for GENDEX Products

GENDEX products or component are guaranteed against defects in material and workmanship for a period of M months, indicated in Table 1 below, from the date of installation at end-user premises, given the installation happens within 3 months of KaVo date of invoice to the dealer and the dealer has evidence of the date of installation, via a relevant invoice indicating clearly the equipment part and serial number, date of issue and customer references. Without such evidence the warranty will start from KaVo data of invoice to the dealer.

Product Name	Warranty period from date of installation Installation within 3 months of KaVo invoice. Given evidence of installation date. In absence of such evidence warranty period from KaVo invoice to Dealer.	Limitations
Orthoralix Systems and X-ray tube	24 months	max. 4000 X-ray exposures
Oralix, Expert DC Systems and X-ray tube	24 months	
VisualiX Intraoral sensor systems	24 months	
DenOptix Digital Phosphor Plate systems	24 months	Phosphor Plates are considered Wear & Digital Phosphor Plate Tear articles.
AcuCam Concept IV eZ1 Intraoral Camera	12 months	
Clarimat 300 Automatic film processor	12 months	
Spare parts and Accessories	12 months	
Repaired spare parts	6 months	
Disposables/Consumables Wear & Tear components	no warranty	

Table 1

■ Gendex, Oralix, Expert DC, DenOptix, Orthoralix, VisualiX, Concept and AcuCam are registered trademarks of Gendex Dental Systems Inc.
■ VixWin is trademark of Gendex Dental Systems Inc.
■ Microsoft, Windows, Windows2000, WindowsXP, are Registered Trademarks of Microsoft Corp
■ FireWire is a registered trademark of Apple Inc.
■ These conditions are subject to change by KaVo without prior notice.

1006.0830

KaVo Dental – Gendex Imaging
Via Alessandro Manzoni, 44
20095 Cusano Milanino • Milan • Italy
Tel. +39 02 6180081 • Fax +39 02 61800809
www.gendex-dental.com
www.kavo.com