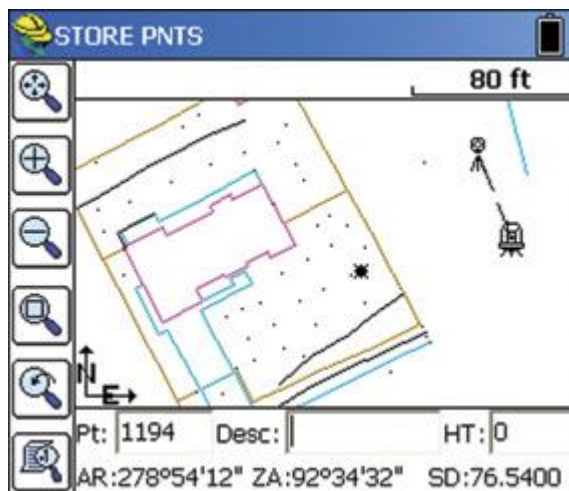


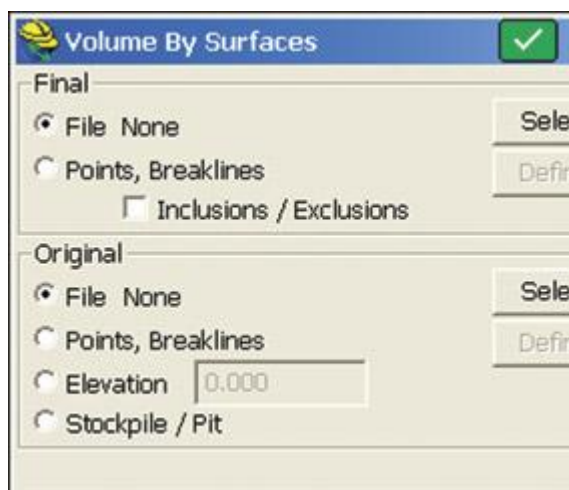
## Carlson SURVCE Screen Captures



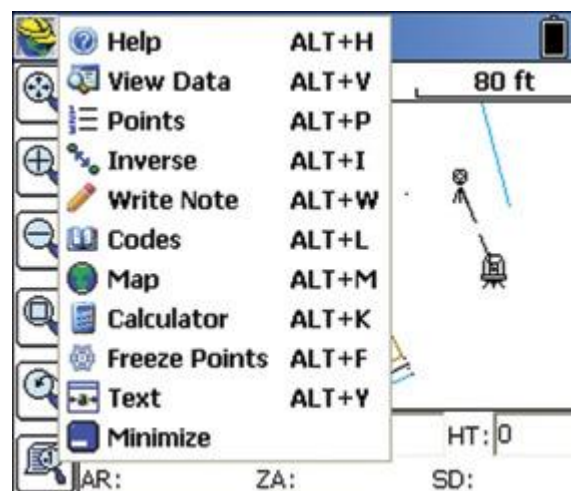
Collect points in the graphics mode.



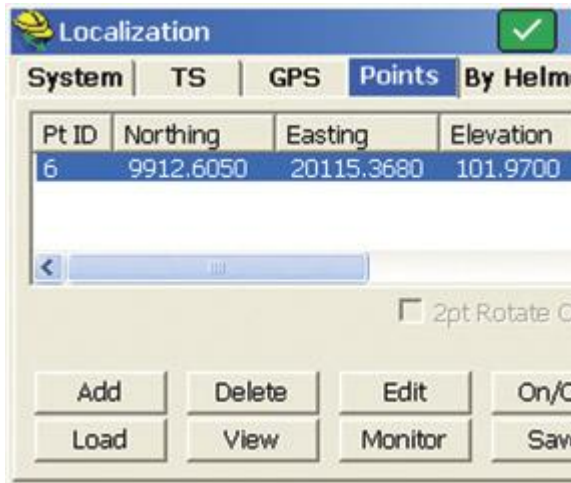
Tab based menu structure.



Compute volumes in SurvCE 2.



Hot List lets users jump to routines.



**Localization** [✓]

System | TS | GPS | **Points** | By Helm

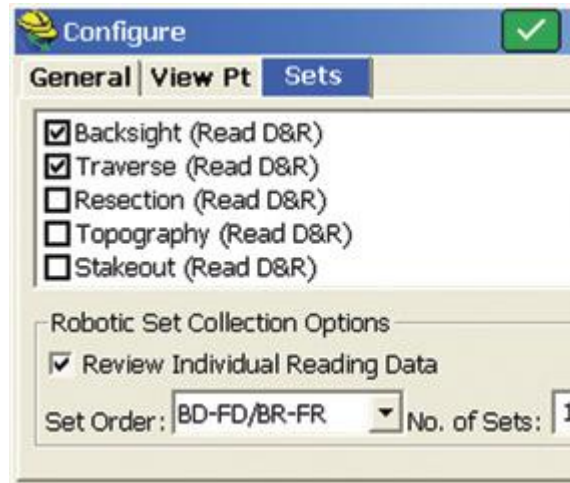
Pt ID	Northing	Easting	Elevation
6	9912.6050	20115.3680	101.9700

< [ ]

☐ 2pt Rotate

Add Delete Edit On/C  
Load View Monitor Save

**Supports an unlimited number of localization points.**



**Configure** [✓]

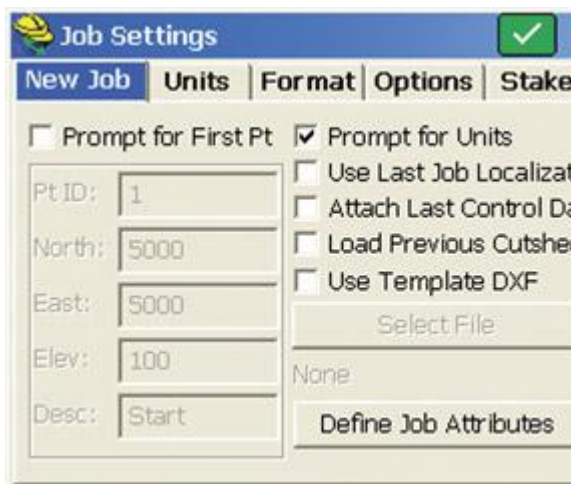
General | View Pt | **Sets**

☒ Backsight (Read D&R)  
☒ Traverse (Read D&R)  
☐ Resection (Read D&R)  
☐ Topography (Read D&R)  
☐ Stakeout (Read D&R)

Robotic Set Collection Options  
☒ Review Individual Reading Data

Set Order: BD-FD/BR-FR No. of Sets: 1

**Angle Sets in Store Points – Faster, more efficient collection.**



**Job Settings** [✓]

New Job | Units | Format | Options | Stake

☐ Prompt for First Pt ☒ Prompt for Units


Pt ID: 1  
 North: 5000  
 East: 5000  
 Elev: 100  
 Desc: Start

☐ Use Last Job Localizat  
☐ Attach Last Control D  
☐ Load Previous Cutshe  
☐ Use Template DXF

Select File  
 None

Define Job Attributes

**Job Settings – Customize layers, colors, cutsheets, descriptions and much more.**



**Settings** [✓]

Field Name	Display Name
Point ID	Pt ID
Northing	Northing
Easting	Easting
Elevation	Elevation
Description	Description
Notes	Notes

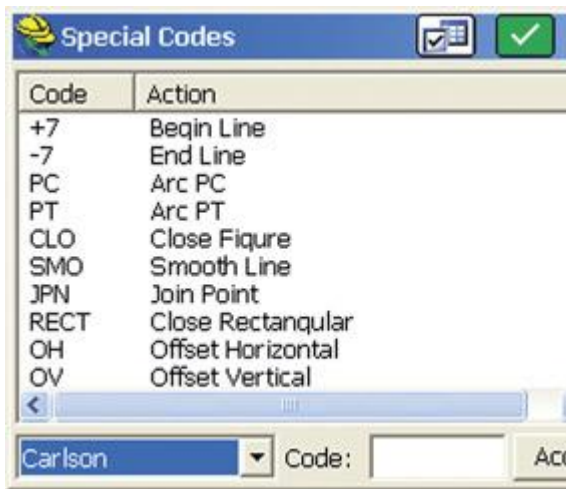
☐ Show Point Notes Add to Next Pt ID: 1

Display Name: Elev Digits: Nor/Eas D

Pt ID 0.000 0.00

Update Item Move Down Move U

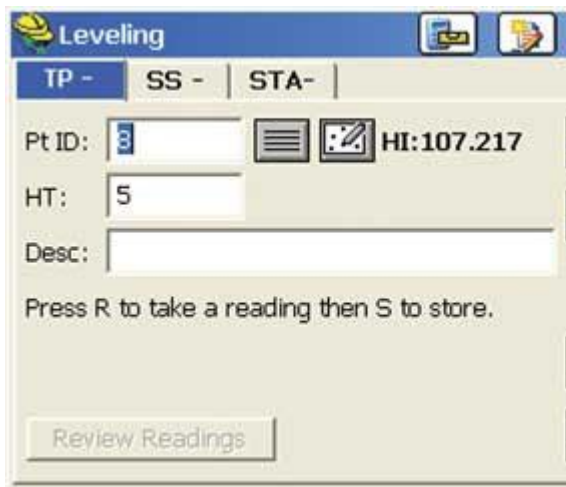
**Point Number by Interval – Advanced point ID controls.**



**Leveling** – Collect and process trigonometric & digital level loops.



**Instrument Switching** – SurvCE keeps track of every instrument, so switching equipment is fast and easy.



**Feature Coding** – Add numerous coding styles & functions.



**Help** – Click to get the help document for the current routine.

## Features

### Easy to use

- Tab-Based MENU Structure. All commands are visible in each menu, preventing the need for Up-Down Arrow Keying to view options.

### Enhanced graphics

- Collect points in the graphics mode. Points plot as they are shot in the field or entered. There is no need to switch between screens to view your points.

### Job Settings

- SurvCE 2 has the option to use a template DXF file for new jobs so that all layers and colors are automatically created per your company standard.
- It has the option to auto-load cutsheets and control files from the previous job for those users that work on one site continuously

## Read in LandXML

- Supports LandXML points, DTM, graphics, alignments, profiles and sections.

## New Features

### New Look

- SurvCE Version2 has a new colorful look. Icons have been standardized to create continuity throughout the product, while modernizing the user experience.

### Hot List

- The new Hot List lets users jump to the SurvCE 2 routines that previously had shortcuts without having to memorize key strokes. It also provides shortcut functionality to devices without keyboards.

### Volumes

- SurvCE 2 can compute volumes between two surfaces, one surface and an elevation or simple stockpile volumes. Surfaces can be defined by graphical entities and points or by Carlson TIN files

### Help

- The software has optional on-board help files. These files are the entire user manual and can be installed separately. Click on the SurvCE icon and select Help to get the help document that pertains to the current routine.

### Leveling

- SurvCE 2 can be used to collect trigonometric level loops and digital level loops. Loops can be processed and adjusted on the device and all existing project coordinate points can be updated.

### GPS Networks

- SurvCE 2 supports several GPS network protocols, such as NTRIP, TCP and UDP.

### Localization

- The software supports an unlimited number of localization points. All project scale settings and coordinate system options have been centrally located in the localization dialog.

### Angle Sets in Store Points

- SurvCE 2 allows users to “Configure” how each reading is measured with regard to direct and reverse options (Formerly know as SS/Trav). If direct and reverse readings are taken at the backsight, then any direct and reverse foresight will be considered an angle set and will be reduced accordingly.

- SurvCE 2 has the ability to turn off the auto-descriptions in stakeout and completely customize how all stakeout routines behave
- Point Number by Interval –SurvCE 2 can interval the point ID by using the “Add to Next Pt ID” option. To number all points on the odd numbers, start at 1 and use 2 in this field.

### Feature Coding

- SurvCE 2 can collect parallel lines using the offset horizontal and offset vertical line drawing commands and close a rectangle by three points using the rectangle command. In the settings section of Special Codes, the user can even auto compute and store the additional points at the line vertices that were created by the software.
- SurvCE 2 allows the user to code in numerous coding styles that may be defined by their office package.  
Instrument Switching
- SurvCE 2 keeps track of every instrument completely separate. This includes all base stations, rovers and total stations, so that mixing equipment is easy. Simply configure your gear once and forget it. The instrument icon has been enhanced to allow you to switch between your current equipment.

### Skew Angle Staking

- SurvCE 2 supports staking offsets on a skew angle and provides the option to stake offset intersections and bisectors at angle points and the radius or PI point of an arc without leaving the Stake Line/Arc routine.

