

USER MANUAL

MODEL 56X Series 564, 566, 568, 562 Hub Surge Protectors



PE PATTON
Electronics Co.



An ISO-9001
Certified Company

Part# 07M560A
Doc# 074270U,
Rev. B
Revised 01/21/08

SALES OFFICE
(301) 975-1000
TECHNICAL SUPPORT
(301) 975-1007
<http://www.patton.com>

1.0 WARRANTY INFORMATION

Patton Electronics warrants all Model 56X Series components to be free from defects, and will—at our option—repair or replace the product should it fail within one year from the first date of shipment.

This warranty is limited to defects in workmanship or materials, and does not cover customer damage, abuse or unauthorized modification. If this product fails or does not perform as warranted, your sole recourse shall be repair or replacement as described above. Under no condition shall **Patton Electronics** be liable for any damages incurred by the use of this product. These damages include, but are not limited to, the following: lost profits, lost savings and incidental or consequential damages arising from the use of or inability to use this product. **Patton Electronics** specifically disclaims all other warranties, expressed or implied, and the installation or use of this product shall be deemed an acceptance of these terms by the user.

1.1 SERVICE

All warranty and nonwarranty repairs must be returned freight prepaid and insured to Patton Electronics. All returns must have a Return Materials Authorization number on the outside of the shipping container. This number may be obtained from Patton Electronics Technical Service at **(301) 975-1007**; <http://www.patton.com>; support@patton.com.

Notice: Packages received without an RMA number will not be accepted.

Patton Electronics' technical staff is also available to answer any questions that might arise concerning the installation or use of your Model 56X. Technical Service hours: **8AM to 5PM EST, Monday through Friday.**

1.2 CE NOTICE

The CE symbol on your Patton Electronics equipment indicates that it is in compliance with the Electromagnetic Compatibility (EMC) directive and the Low Voltage Directive (LVD) of the Union European (EU). A Certificate of Compliance is available by contacting Technical Support.

2.0 GENERAL INFORMATION

Thank you for your purchase of this Patton Electronics product. This product has been thoroughly inspected and tested and is warranted for One Year parts and labor. If you have any questions about this product, please call Patton Electronics Technical Support at: **(301) 975-1007; support@patton.com; or, <http://www.patton.com>.**

2.1 FEATURES

- Guards 4, 6, 8 or 12 10Base-T ports simultaneously
- Four models are available: 4, 6, 8, or 12 10Base-T protectors per enclosure
- Surge handling capability of up to 1.5KW
- Conforms to the IEEE 802.3 Ethernet Standard
- Surge energy is diverted to ground through a braided metal strap
- Compact design perfect for hub protection
- Made in the U.S.A.

2.2 DESCRIPTION

The Patton Model 56X Series is built to answer the question of how to provide transient protection for multiple Ethernet 802.3 10Base-T ports spaced closely together on a hub. It is a very compact box that houses 4, 6, 8, or 12 surge protectors in a high-density array. Matching input and output ports on the front and rear panels allow the Model 56X Series to conveniently connect in-line with each port on your 10Base-T hub.

All versions of the Model 56X support data rates of up to 10Mbps. Harmful data line transients on the hub ports are diverted directly to chassis ground through the use of a solid state hybrid circuit. The Model 56X is able to handle repeated surges up to 1.5KW without a degradation in performance. Most importantly, the Model 56X protects transparently and will not slow your network down.

Warning—Should your equipment or building be subject to a direct lightning strike, this product will not provide complete protection.

3.0 INSTALLATION

Take these 4 steps to install your Patton Model 56X.

Note: Make sure you follow the installation instructions exactly. If the suppressor is improperly installed, the current-limiting feature could be rendered inoperable.

1. Disconnect the twisted pair network cables from your hub.
2. Connect your network cables to an input port on your Model 56X. Since the Model 56X provides bidirectional protection, the front or rear ports can be used as the input from your network.
3. Using the RJ-45 cables provided, connect each of the output ports to an input port of your hub. Note that the 56X features a **straight through** design. Data entering the hub protector at an RJ-45 input will leave the protector at the RJ-45 output that is located directly behind it.
4. Connect the braided metal strap on the Model 56X to a nearby chassis ground. In industrial applications, the ground strap can be removed from the terminal post to allow alternative ground connections to be added. If you are not sure of the proper grounding for your Model 56X, please contact Patton Electronics Technical Service at: **(301) 975-1007**; **<http://www.patton.com>**; or **support@patton.com**.

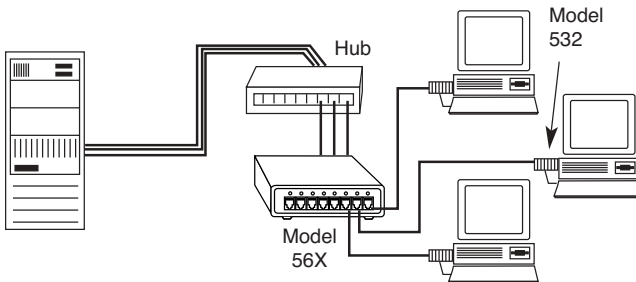


Figure 1. How to Connect the Model 56X

Note: We highly recommend that you use a surge protection device at both ends of your 10Base-T ports. For the best products to meet your needs, contact Patton Electronics Sales at: **(301) 975-1007**; **support@patton.com**; or, **<http://www.patton.com>**.

Dear Valued Customer,

Thank you for purchasing Patton Electronics products! We do appreciate your business. I trust that you find this user manual helpful.

We manufacture one of the widest selections of data communications products in the world including CSU/DSU's, network termination units, powered and self-powered short range modems, fiber optic modems, interface converters, baluns, electronic data switches, data-line surge protectors, multiplexers, transceivers, hubs, print servers and much more. We produce these products at our Gaithersburg, MD, USA, facility, and can custom manufacture products for your unique needs.

We would like to hear from you. Please contact us in any of the following ways to tell us how you like this product and how we can meet your product needs today and in the future.

Web:	http://www.patton.com
Sales E-mail:	sales@patton.com
Support E-mail:	support@patton.com
Phone - Sales	(301) 975-1000
Phone - Support	(301) 975-1007
Fax:	(301) 869-9293
Mail:	Patton Electronics Company 7622 Rickenbacker Drive Gaithersburg, MD 20879 USA

We are committed to a quality product at a quality price. Patton Electronics is ISO 9001 certified. We meet and exceed the highest standards in the industry (CE, UL, etc.).

Please contact us and let us know how we may provide you with the answers to your needs.

Thank you.

Burton A.Patton
Vice President

P.S. Please tell us where you purchased this product.
