

HDMI-4/8-SERM FRONT VIEW



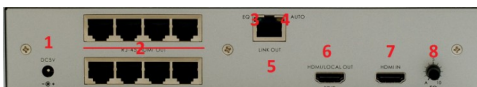
1. EDID Activity
2. Link of Local Monitor (HDMI-Out)
3. Power Indicator

HDMI-4-SERM REAR VIEW



1. DC 5V 3A Input
2. RJ-45 HDMI Outputs
- 3-4. Input EQ Indicator - On: Auto EQ,
Off: Manual EQ
5. RJ-45 Link Out (used for cascading)
6. Local HDMI Monitor Out
7. HDMI Source Input
8. Input EQ Adjustment (for long input HDMI cable)

HDMI-8-SERM REAR VIEW



1. DC 5V 3A Input
2. RJ-45 HDMI Outputs
- 3-4. Input EQ Indicator - On: Auto EQ,
Off: Manual EQ
5. RJ-45 Link Out (used for cascading)
6. Local HDMI Monitor Out
7. HDMI Source Input
8. Input EQ Adjustment (for long input HDMI cable)

Troubleshooting Q & A

There are green red dots on the local monitor.

This is an EQ problem on the input source. Adjust the EQ knob until the dots disappear

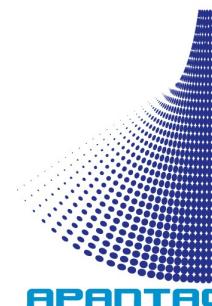
There is no image on the monitor.

Check the following:

- Cable Length
- Cable Quality (Low skew FTP cables perform better than regular network cables.)
- Adjust the EQ knob slowly until the image appears.

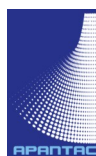
The output of display has noise or occasionally flashes.

- Check cable distance.
- Check cable quality.
- Slowly adjust the EQ knob on the HDMI-1-R until the image appears. It is best to use a pattern generator instead of the source to perform this adjustment.
- Check for excessive RF interference in the room.



HDMI-4-SERM HDMI-8-SERM USER MANUAL

HDMI CATx Multi-Port Extenders



© 2012 APANTAC LLC, All rights reserved
7556 SW BRIDGEPORT ROAD
PORTLAND, OR 97224, USA
PHONE +1 503 968 3000
FAX +1 503 389 7921

The content of this document is provided in connection with Apantac LLC ("Apantac") products. Apantac makes no representation or warranties with respect to the accuracy or completeness of the contents of this publication and reserves the right to make changes to specifications and product descriptions at any time without notice.

Package Contents

- 1 x HDMI-4-SERM or 1 x HDMI-8-SERM
- User Manual (s)
- Power Adapters (5V 3A)

Features

- Extends 1080p signals up to 115 feet (35 meters) with a single CATx cable (when used with HDMI-1-R)
- 3 Levels of Cascade of HDMI over CATx cable
- 1.65 GHz Bandwidth
- Input equalization adjustment to maximize video quality

RECEIVERS REQUIRED

HDMI-1-R - Long Distance Receiver
Up to 115 ft (35 m).



HDMI-SR - Short Distance Receiver
Up to 35 ft (10 m).



Installation

1. Turn off all devices.
2. Connect the monitor to the HDMI Local Monitor Port.
3. Plug in the power adapter.
4. The POWER indicator and LINK indicator will light up.
5. The ACTIVE indicator will light when the extender receives a valid HDMI signal.
6. LINK OUT: This port is used to cascade more than one multi-port extender.

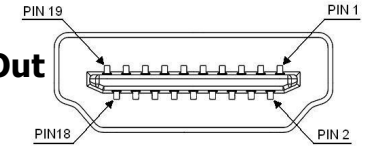
EQ ADJUSTMENT

This is used only when the input HDMI cable is long (more than 6 ft.) In most cases the EQ Adjustment can be set to Auto-Mode by turning the dial all the way counter clockwise. When this happens, the <EQ> and <AUTO> LEDs will turn blue.

Specifications

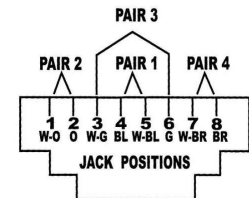
MODEL	HDMI-4-SERM	HDMI-8-SERM
Description	4 Port HDMI Extender	8 Port HDMI Extender
Input	1 x HDMI A-Type Female	1 x HDMI A-Type Female
Output	1 x HDMI Female 4 x RJ45 HDMI	1 x HDMI Female 8 x RJ45 HDMI
Max Resolution	1080p 60Hz	1080p 60Hz
Cable Distance	35m/115ft @ 1080p	35m/115ft @ 1080p
Power Adapter	5V 3A DC	5V 3A DC
Dimension (mm)	240 W x 180 x D 44 H	240 W x 180 x D 44 H

HDMI Pin Out



Pin #	Signal	Pin #	Signal
1	TMDS Data 2+	11	TMDS Clock Shield
2	TMDS Data 2 Shield	12	TMDS Clock -
3	TMDS Data 2-	13	CEC
4	TMDS Data 1+	14	Reserved (N.C. on device)
5	TMDS Data 1 Shield	15	SCL
6	TMDS Data 1-	16	SDA
7	TMDS Data 0+	17	DDC/CEC Ground
8	TMDS Data 0 Shield	18	+5 Power
9	TMDS Data 0-	19	Hot Plug Detect
10	TMDS Clock+		

CATx Wiring



Identification	Pin Assignment	Color Code
Pair 1	5	White-Blue
	4	Blue
Pair 2	1	White-Orange
	2	Orange
Pair 3	3	White-Green
	6	Green
Pair 4	7	White-Brown
	8	Brown