

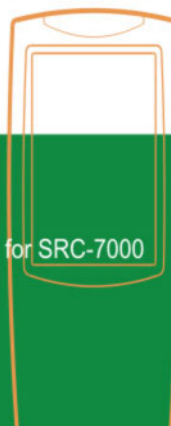
SRC-7000

RemoteComm

SUNWAVE

RemoteComm

Ver 0.9.02



The software of RemoteComm is designed for SRC-7000
by using SLC-2080 to connect with PC.

2005 Sunwave Technology Corp. All right reserved.
[Http://www.sun-wave.com](http://www.sun-wave.com)

Software User's Manual

050225

Preface

About this manual

This manual is designed to make using the SRC-7000 RemoteComm program as easy as possible. Information in this document has been carefully checked for accuracy; however, no guarantee is given to the correctness of the contents. The information in this document is subject to change without notice.

Copyright

© Copyright 2005

This document contains proprietary information protected by copyright. All rights are reserved. No part of this manual may be reproduced by any mechanical, electronic or other means, in any form, without the prior written permission of Sunwave Technology Corporation.

Trademarks

All trademarks and registered trademarks are the property of their respective owners.

SUNWAVE Customer Service & Support Info

E-Mail: info@sunwave.com.tw

URL: www.sun-wave.com

Table of Contents

| | |
|---|-----------|
| CHAPTER 1 OVERVIEW | 1 |
| INTRODUCING THE SRC-7000..... | 1 |
| SYSTEM REQUIREMENTS..... | 1 |
| ABOUT THE REMOTECOMM SOFTWARE..... | 2 |
| CHAPTER 2 INSTALLATION..... | 3 |
| SLC-2080 CABLE..... | 3 |
| SRC-7000 REMOTECOMM INSTALLATION..... | 6 |
| CHAPTER 3 GETTING STARTED | 7 |
| STARTING THE SOFTWARE..... | 7 |
| THE INTERFACE..... | 7 |
| THE SRC-7000 VMCF FILE..... | 10 |
| CONNECTING THE SRC-7000 TO A PC | 10 |
| CHAPTER 4 USING THE SOFTWARE INTERFACE | 11 |
| USING A PRE-PROGRAMMED CODE..... | 12 |
| ADDING A DEVICE KEY FROM A PRE-PROGRAMMED CODE..... | 15 |
| ADDING A SOFT KEY | 19 |
| LEARNING AND SHOOTING CODE | 21 |
| CREATING A DEVICE KEY | 24 |
| CREATING A MACRO KEY | 26 |
| CREATING A TIMER MACRO | 31 |
| CREATING A CYCLE KEY..... | 33 |
| CREATING A LABEL | 37 |
| EDITING THE REMOTE CONTROL CONFIGURATION..... | 39 |
| CUSTOMIZING YOUR WELCOME PAGE | 41 |
| CHAPTER 5 PORTABLE MODEL FILES..... | 43 |
| IMPORTING A MODEL FILE | 43 |
| EXPORTING A MODEL FILE | 44 |
| CHAPTER 6 COMMUNICATIONS..... | 45 |
| DOWNLOADING FROM THE REMOTE CONTROL | 45 |

| | |
|---|-----------|
| UPLOADING TO THE REMOTE CONTROL..... | 46 |
| CHAPTER 7 ICON EDITOR SOFTWARE | 47 |
| LIBRARY FILES | 47 |
| CREATING AN ICON | 49 |
| CHANGING AN ICON | 51 |
| IMPORTING A LIBRARY | 53 |
| APPENDIX..... | 56 |
| TROUBLESHOOTING..... | 56 |

Chapter 1 Overview

This chapter provides an overview of the SRC-7000 RemoteComm software, its features and functions.

Introducing the SRC-7000

Congratulations on your purchase of the SRC-7000 touch screen remote control. The SRC-7000 remote control is a digital programmable universal remote control that can control multiple devices in your home and interface with your computer.

This manual specifically covers RemoteComm, the SRC-7000 remote control software. The RemoteComm software provides an interface for configuring and customizing the SRC-7000. You can also use the RemoteComm software to create macros and timers, similar to the function used in SRC-7000 Remote Control.

This manual should be used in conjunction with the SRC-7000 user manual and the user manuals for the devices it is to control.

System requirements

This software is used for a PC with CD-ROM drive, USB port, and 30MB of free hard-disk space.

Supported operating systems:

Windows 98 and 98SE

Windows ME

Windows 2000 Professional

Windows XP Home Edition and Professional

Microsoft® and Windows are either registered trademarks or trademarks of Microsoft Corporation in the United States and/or other countries.

About the RemoteComm software

RemoteComm software is designed to make configuring and customizing of the SRC-7000 easy and convenient. When the software is installed, you can connect your SRC-7000 to your computer to upload or download configuration data.

When the RemoteComm and Icon Editor software is installed, you can easily:

- Create macros and timer macros
- Back up your configuration to a PC
- Customize the LCD layout using the unique RemoteComm software
- Create your own icon library of using Icon Editor software, and use it on the SRC-7000
- Upload or download your own database of using your PC

Chapter 2 Installation

Read this chapter to learn how to install the software and drivers required for the SRC-7000. Read this section carefully and install all the components in the correct order, exactly as it describes in the instructions.

SLC-2080 cable

The SLC-2080 cable is the interface cable that connects the SRC-7000 to your computer. The cable comes in two pieces. Both pieces are required to connect the SRC-7000 to a computer. The smaller cable, with the round, 3.5 mm plugs can be used to connect two remote controls together to share data.

Note: You must first install the SLC-2080 USB driver for the SLC-2080 cable to work.

To install the SLC-2080 cable:

1. Plug the SLC-2080 cable into the USB port on your PC.

The operating system should detect the new USB device automatically and display the following screen.



2. Click **Next >** to display the following screen.

Search for a suitable driver for my device



3. Check the **Search for a suitable driver for my device** radio button and click **Next >**.

Specify a location



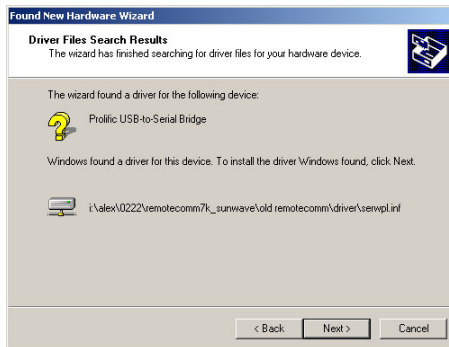
4. Insert the RemoteComm CD-ROM in the CD-ROM drive.
5. Check the **Specify a location** option and click **Next >**.

Browse to the location of the driver on the supplied CD-ROM



6. Browse to the location of the driver on the supplied CD-ROM and click **OK**.

The following screen is displayed.



7. Click **Next >** to display the following screen.



8. Click **Finish** to complete the installation.

Note:

You may need to restart your machine for the new installation to become active.

SRC-7000 RemoteComm installation

Insert the CD-ROM into your CD-ROM drive. Setup should begin automatically. After installing the SLC-2080 USB cable driver, click **SRC-7000**. The SRC-7000 RemoteComm software will install automatically.

If setup does not begin automatically, running the **RemoteComm 7000* *.exe** file in the CD root folder, or the **AutoRun.exe** file, to begin Setup. Follow the on-screen instructions.



Chapter 3 Getting started

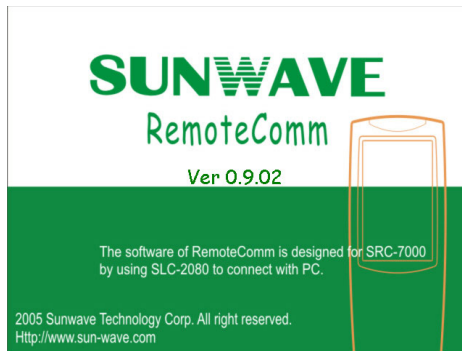
Read this chapter after you have installed the RemoteComm software to learn how to operate the interface and use the basic functions.

Starting the software

Double click the icon on the desktop to start the RemoteComm software. You can also click the Start button and then start the software from the Sunwave folder in the Start menu.

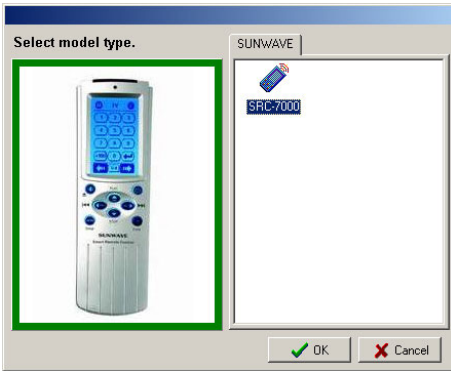
The interface


A welcome screen appears when the RemoteComm software is started.

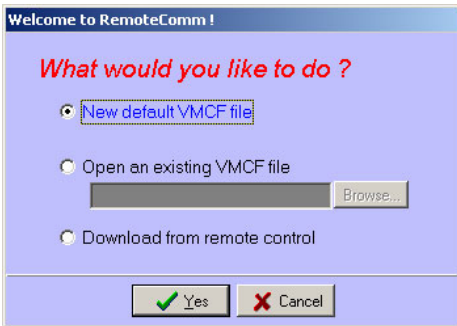


When the software is fully loaded, you must confirm the remote control model you are using.

1. Highlight **SRC-7000** and click OK.



2. Select the item you want, and click the  button.



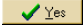
- **New default VMCF file**

If you are configuring your SRC-7000 for the first time, you will probably want to modify the new default VMCF file by selecting this item.

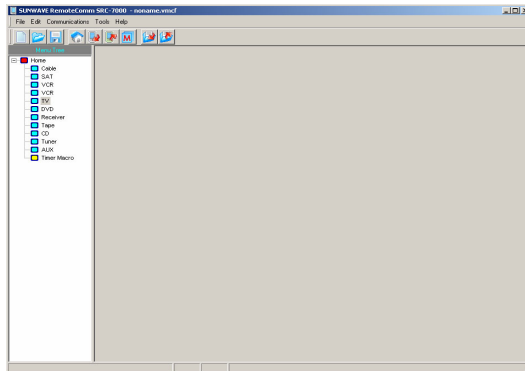
- **Open an existing VMCF file**

If you have a saved version of the active VMCF file on your hard disk, you can modify that and then upload it to the remote control.

- **Download from remote control**

If you are already using your SRC-7000 and need to modify the VMCF file in the remote control, connect the SRC-7000 to the PC. See “Connecting the SRC-7000 to a PC” on page 10. When you click the  button, a status bar indicates the download progress. See Chapter 6 Communications on page 45 for more information about connecting and downloading from the remote control.

The following screen appears.



When you see this screen, you are ready to start using the RemoteComm software to program your SRC-7000 remote control.

The SRC-7000 VMCF file

A VMCF file contains the configuration for your remote control. It can be created and modified of using RemoteComm software. It can also be stored on your computer hard disk.

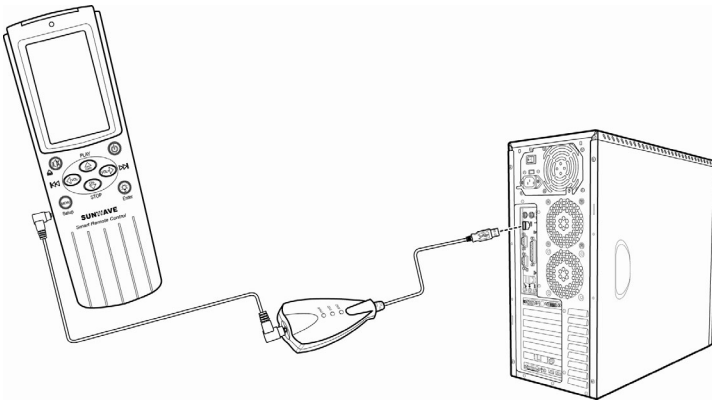
You can download the VMCF file from the SRC-7000 to your PC and modify it, or store it on your hard disk as a backup profiles. You can also transfer a VMCF file directly from one SRC-7000 remote control to another.

A VMCF file contains all the configuration data for the SRC-7000 including soft keys, macros, timers etc.

When you have backed up your VMCF file to your PC, you can choose the "Open an existing VMCF file" option to modify it.

Connecting the SRC-7000 to a PC

Some functions within the software require you to connect the SRC-7000 to a PC. For example, you will need to connect the SRC-7000 to your PC when you upload or download configurations. Connect your PC and SRC-7000 with the provided as shown in the diagram below.



Chapter 4 Using the software interface

Read this chapter and learn how to use the RemoteComm software to configure your SRC-7000 remote control.

Main tool bar icons



To create a new VMCF file.



To open an existing VMCF file stored on your hard disk



To save the current VMCF file



To edit the home LCD soft page



To import a model file to a selected device



To export a model file from a selected device



To edit a macro device



To download a VMCF file from the remote control



To upload the current VMCF device to the remote control

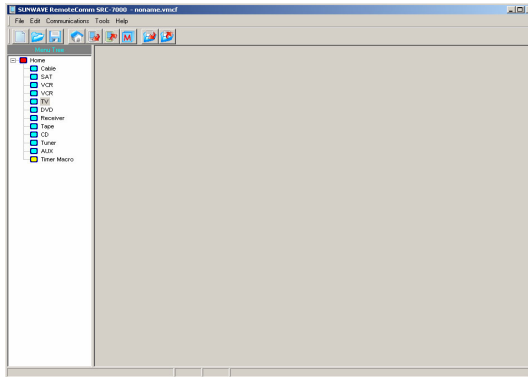
Using a pre-programmed code

The easiest way to program your SRC-7000 for a new device is to use a pre-programmed code. The RemoteComm software is equipped with a large database of pre-programmed codes.

To use a pre-programmed code:

1. Start the RemoteComm software as described in the section of “Starting the software” on page 7.
2. Select a VMCF file to modify. See page 7 for details of “how to select a VMCF file”.

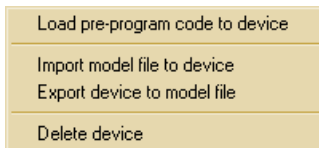
When the VMCF file is loaded, the window below is displayed:



You can modify any of the devices listed in the left hand panel. As an example, let's assume that you want to load a preprogrammed code to control your new TV:

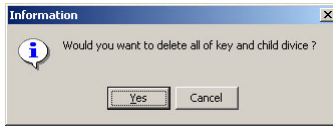
3. Right click the TV icon in the left hand panel.


A drop down menu appears as follows:



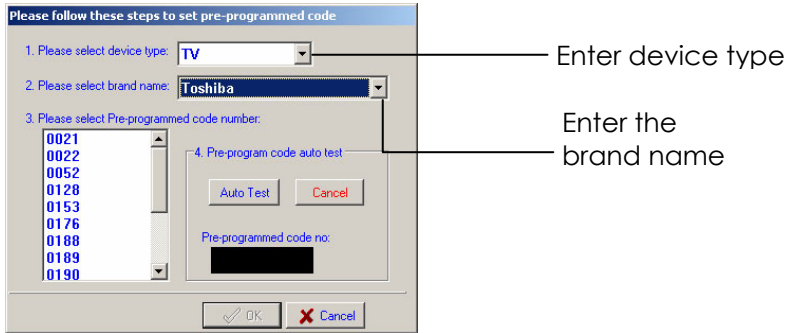
4. Select “**Load pre-program code to device**” item from the drop down menu.


A warning box appears of asking you to confirm that the original setting may be deleted.



5. Click  to confirm that you wish to overwrite the existing configuration for the chosen device.

The pre-programmed code is entry window appears.



6. Select the device type and the brand name in the first two fields.
7. If you know the pre-programmed code number, select it from the list in the third field by clicking on it with the mouse, and then press .
8. If you don't know the pre-programmed code number, you must perform an **Auto Test** instead.

Perform an **Auto Test** to confirm which pre-programmed code you need to control your device.

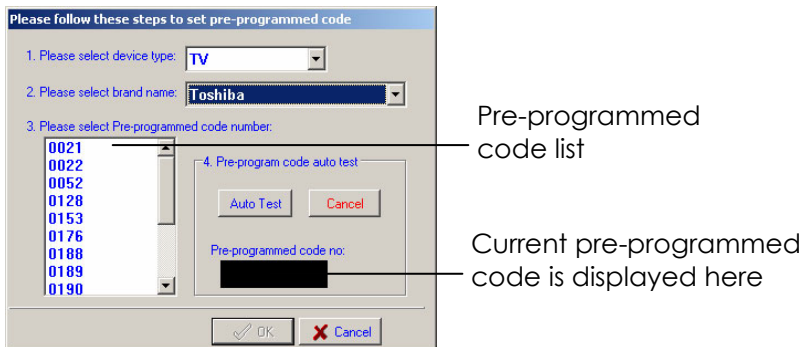
To perform an **Auto Test**

1. Turn on the device you are trying to control with the SRC-7000 (in this case a TV).
2. Connect the remote control to the computer with the SLC-2080 USB cable. See Connecting the SRC-7000 to a PC on page 10.
3. Follow steps 1-6 above.
4. Point the SRC-7000 at the device you are trying to control.
5. Click **Auto Test** in the fourth field.

Signals are transmitted to the TV from the SRC-7000 sequentially.

6. When the device is turned off, then you can now make a note of the current pre-programmed code number. This is the code you require.


Note: When the device is turned off, click **Cancel** immediately to stop the Auto Test.



7. Select the code you require from the pre-programmed code list and click **OK**.

Adding a device key from a pre-programmed code

Note:

- After the configuration, you need to download the new VMCF file to the SRC-7000 to make it active. See Chapter 6 Communications on page 45 for more information.
- You should also save a copy on your hard disk as a backup. To save the current VMCF file, click the save button  and name it so that you can find it again.

Adding a device key from a pre-programmed code

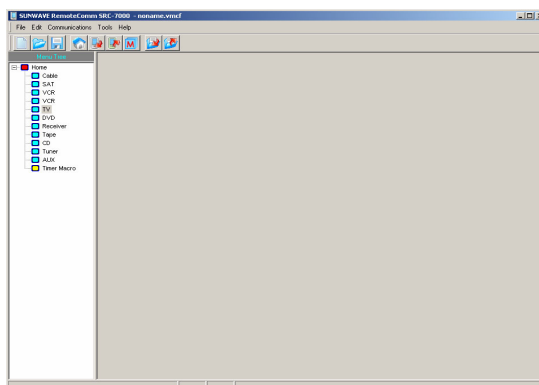
You may find that the devices listed in the left hand panel of the RemoteComm interface window do not suit your needs exactly. You can delete items from this list and add new ones of your own. You can also add new devices within existing devices. The easiest way to add a new device is to pick one from the list of pre-programmed devices.

To add a new device:

1. Start the RemoteComm software as described in Starting the software on page 7.
2. Select a VMCF file to modify.



When the VMCF file is loaded, the window below is displayed:

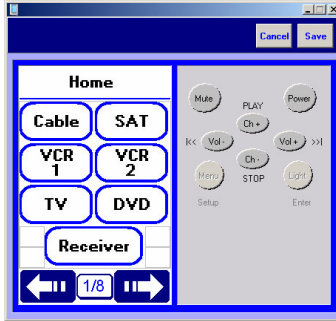
You can delete any of the devices in the left hand panel, or add a new device of your own.



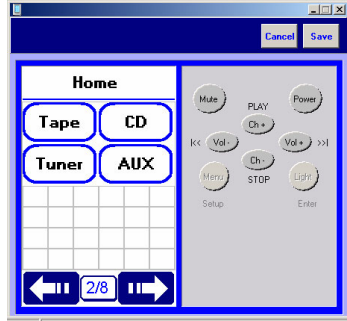
3. Click on the home button  or the Home icon in the left hand panel to return the Home LCD soft window.

Note: You can also click any of the existing devices in the list if you want to add a device key within that device.

- Press the  or  button to go to the page where you want the device key to appear.

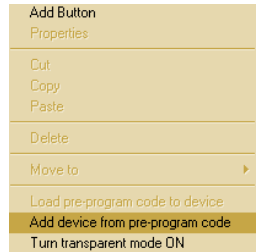


Page 1

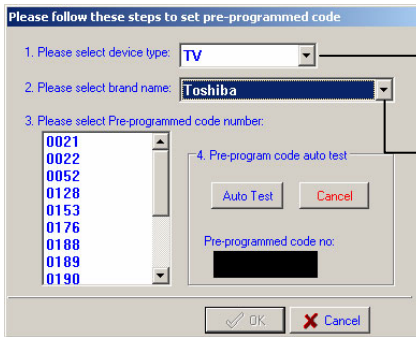


Page 2

- Move the cursor to the white background and right click to display a drop down menu.
- Select **Add device from pre-program code**.



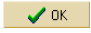
The pre-programmed code entry window will appear. Let's assume that you are adding a new TV device.

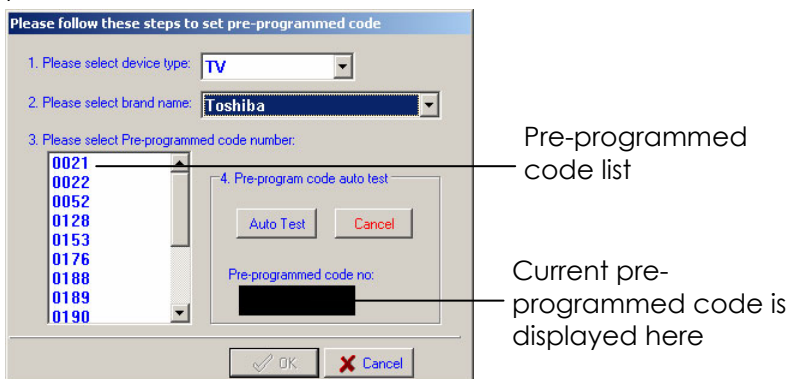


Enter device type

Enter the brand name

Adding a device key from a pre-programmed code

7. Select the device type and the brand name in the first two fields.
8. If you know the pre-programmed code number, select it from the list in the third field by clicking on it with the mouse, and then press . If you don't know the pre-programmed code number, you will need to perform an Auto Test. See the previous section for details of how to perform an Auto Test.

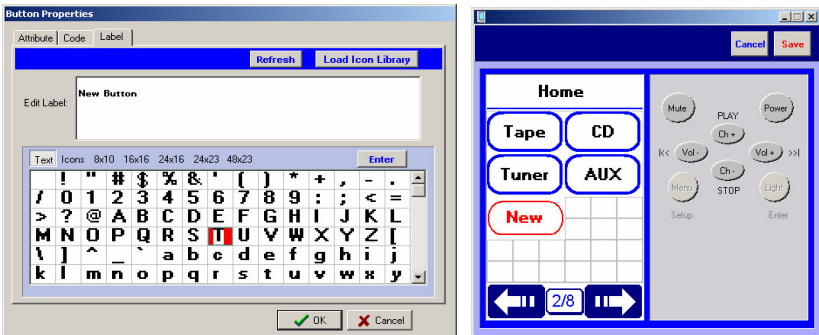


9. Select the code you require from the pre-programmed code list and click .

After you have inputted the pre-programmed codes, a new key will appear in the top left corner of the LCD soft window. You can drag the new key to a new position on the screen with the mouse.

10. Double click on the new key to popup the key properties window.

11. Give the new key a name of using the keyboard or on-screen keyboard.

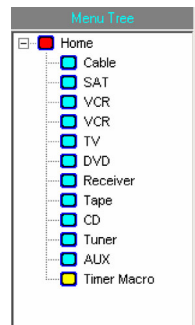


12. Click inside the Edit Label field and use either the keyboard or the on-screen keyboard to enter a key name.

Note:


- To add a carriage return (new line) in your key name, use the enter key on the on-screen keyboard.
- You can select the icons by click the "Icons" tap on the text table.
- You can also click the "Load Icon Library" button to load your own icons. See "Chapter 7 Icon Editor" for more information.

13. Press .



Your new device key will appear in the LCD soft window with the new name. When you download the configuration to your remote control, it will have the characteristics of the pre-programmed device you selected. Your new device will also appear in the device list in the left panel of the interface and it can be modified or deleted just like the other devices in the list.

Note:

- You will need to download the new configuration to the remote control to make it active. See Chapter 6 Communications on page 45 for more information.
- You should also save a copy on your hard disk as a backup. To save the current VMCF file, click the save button  and name it so that you can find it again.
- You can delete a device from the menu tree by right clicking on it and selecting **Delete device** from the drop down menu.

Adding a soft key

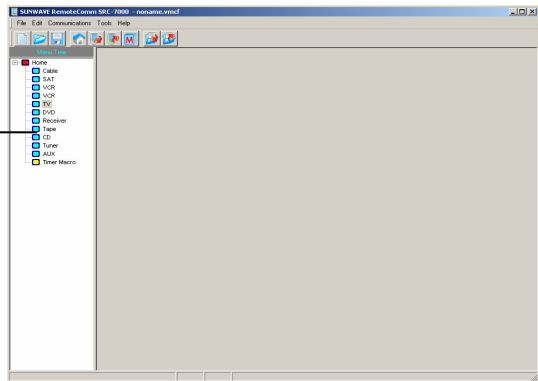
You can add or delete a key to any of the devices defined, including those that you have defined yourself.



To add a new soft key:

1. Start the RemoteComm software as described in "Starting the software" on page 7.

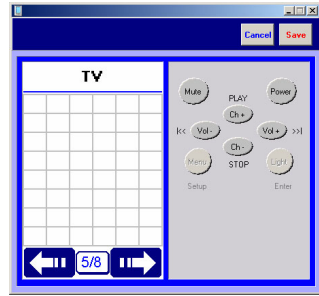
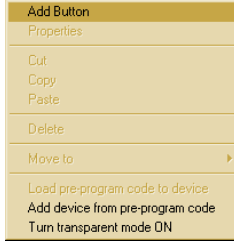
When the correct VMCF file is loaded, the window below will be displayed:

Select a device to add a new soft key





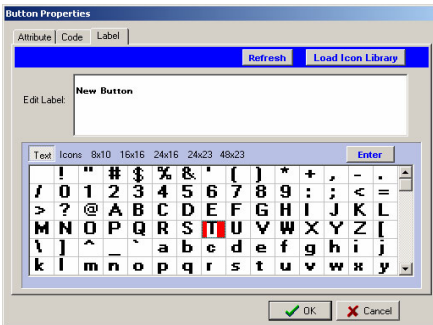
2. Click on the device that you want to add a key to in the left hand panel.
3. When the LCD soft window appears, click the next  and previous  buttons to browse the page on which you want to add a new key.

- Right click on the white background and select **Add button** from the drop down menu.



A new key will appear in the top left corner of the LCD soft window. You can drag the new key to a new position on the screen with the mouse.


- Double click on the new key to popup the key properties window.
- Give the key a name as described on page 18.
- Click  to return to the previous screen.
- Click  to save your new key.



Note:

- You can change the location of the button to another page by right clicking on the soft key and selecting "Move to" to select a new page.
- You can resize any of the soft keys by dragging the corner of the key with the mouse. You can also reposition any of the soft keys

by clicking and dragging them to a new position.

- You can move the new key to a new page by right clicking on it and choosing **move to** from the drop down menu.
- To learn how to apply a function to your new key, see the next section, Learning and shooting code.
- You will need to download the new configuration to the SRC-7000 to make it active. See Chapter 6 Communications on page 45 for more information.
- To save the current VMCF file, click the save button  and name it so that you can find it again.

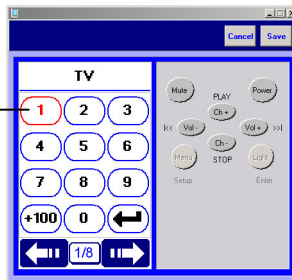
Learning and shooting code

Use the learning and shooting code functions to copy a new key from the original remote. You can add a function either to a soft key that you have added yourself and a key within an existing device, or a device key.

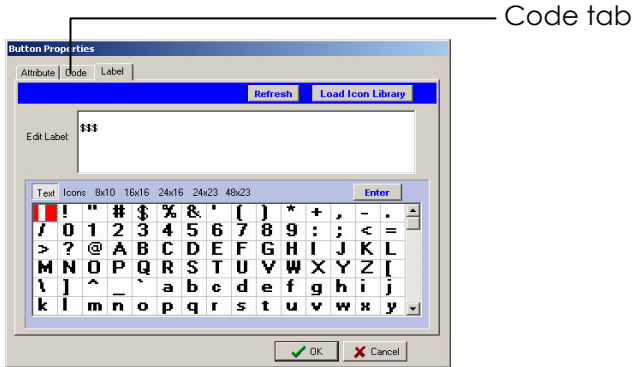
To apply the function to a key:

1. Start the RemoteComm software as described in Starting the software on page 7.
2. Click the device icon from the left hand panel and select the key for your new function. This can be any one of the keys on the Home LCD soft window, or any key on the LCD soft windows for existing devices.
3. Double click the key in the LCD soft window to display its properties.

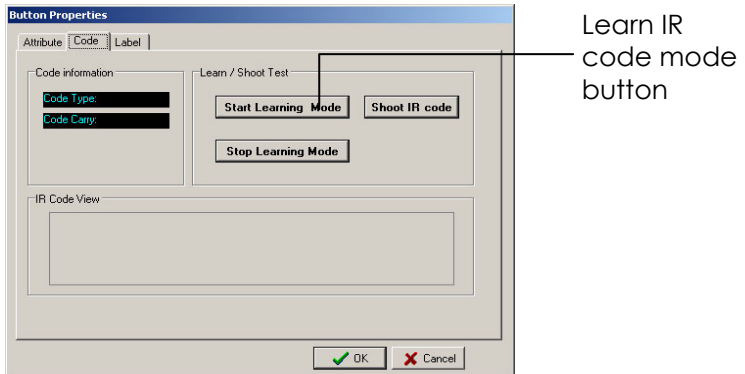
Double click the button to display its properties



4. Click the Code tab to display the key's code properties.



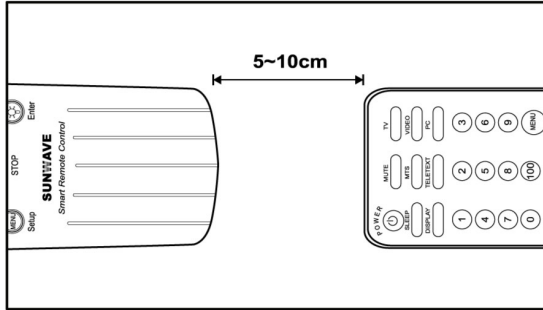
When the code properties window is displayed, you are ready to apply a function to the key. You will also need the original remote control that came with the device.



5. Connect the SRC-7000 to the PC as described in Connecting the SRC-7000 to a PC on page 10.

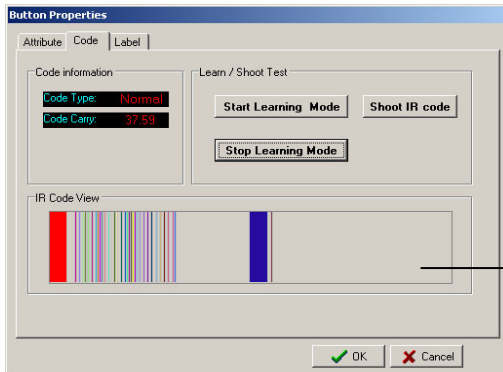
Learning and shooting code

- Click the **Learn IR code mode** button.
- Point the original remote control at the bottom of the SRC-7000. Press and hold the key you want to teach.



Press and hold the key on the original remote control that you want the SRC-7000 to learn

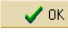

The SRC-7000 beeps when it has learnt the new key. A graphical wave form of the IR signal appears in the IR Code View box.



- To test the new function, click the **Stop Learning mode** button, to end the learning process.

9. Point the SRC-7000 at the device. Click the **Shoot IR code** button.

If the learning process has worked, the new code should be sent by the SRC-7000 and the device should react accordingly. If the new key does not work, repeat steps 7-10 to re-teach the code.

10. Press  to return to the LCD soft window view.
11. Press  on the device window to save the new key function.

Note:

You will need to download the new configuration to the SRC-7000 to make it active. See Chapter 6 Communications on page 45 for more information.

You should also save a copy on your hard disk as a backup.

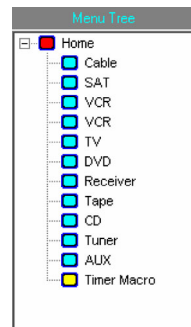
Creating a device key

You can add a new device from a pre-programmed set of codes, as described in Adding a device key from a pre-programmed code on page 15. However, you may want to add a new device key of your own design. You will probably only want to add new device keys to the Home LCD soft windows, but you can add a device key to any pages of existing devices.

To add a device key:

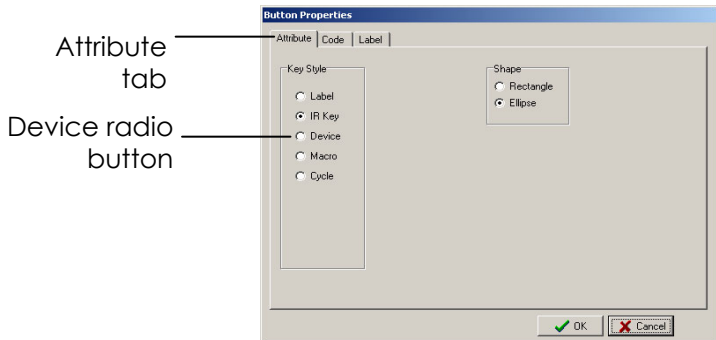
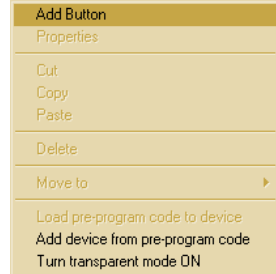
1. Start the RemoteComm software as described in "Starting the software" on page 7.
2. Click the Home icon in the left hand panel to add a new device key to the Home LCD soft window. You can also click on any of the existing devices if you want to add a child device to one of them.



The Home LCD soft window or the LCD soft window for the device you have



chosen will appear.


3. Right click on the white background where you want the new device key to appear.
4. Select **Add button** from the drop down menu.
5. Drag the new key to where you want it to appear on the LCD soft window.
6. Double click the key to display the key properties box.
7. Click the **Attribute** tab to display the key attributes.



8. Click the radio button to define the new key as a device key.
9. Click  to return to the LCD soft window, and click  to save the new configuration.

Note:

- You can add a label to your key in the same way as you would for a soft key, see on page 19.
- You can also add a function to the new device key, see Learning and shooting code on page 21.
- Note: You will need to download the new configuration to the remote control to make it active. See Chapter 6 Communications on page 45 for more information.

- You should also save a copy on your hard disk as a backup. To save the current VMCF file, click the save button  and name it so that you can find it again.

Creating a macro key

You can create a macro key either on an LCD soft window for an existing device, or on the Home LCD soft window. A macro is a series of commands one after the other. You could for instance write a macro to turn on a VCR then switch it to a particular channel, and begin recording. All could be simplified just with the press of a single key.

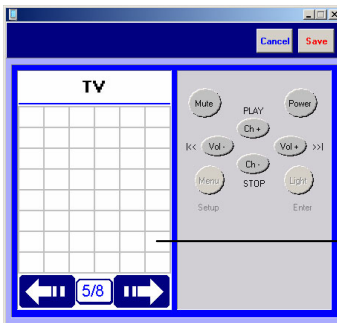
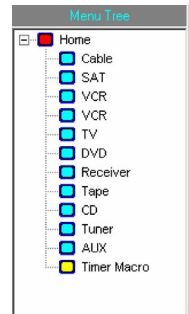
To create a macro:

1. Start the RemoteComm software as described in Starting the software on page 7.

2. Click on a device or the Home icon in the left hand panel where you would like your new Macro key to appear.

The Home LCD soft window or the LCD soft window for the device you have chosen appears.

3. Right click on the white background where you want the macro key to appear.

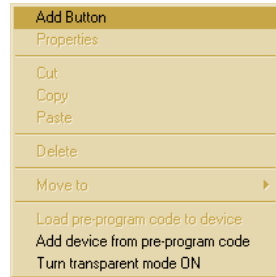


Right click here to place a macro button on the page

Creating a macro key

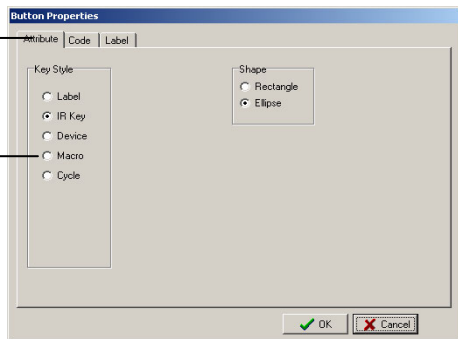
Select **Add button** from the drop down menu.

4. Drag the new key to where you want it to appear on the LCD soft window.
5. Double click the key to display the key properties box.
6. Click the Attribute tab to display the key attributes.



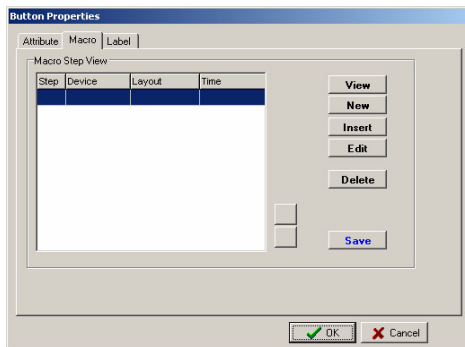
Attributes tab

Macro radio button

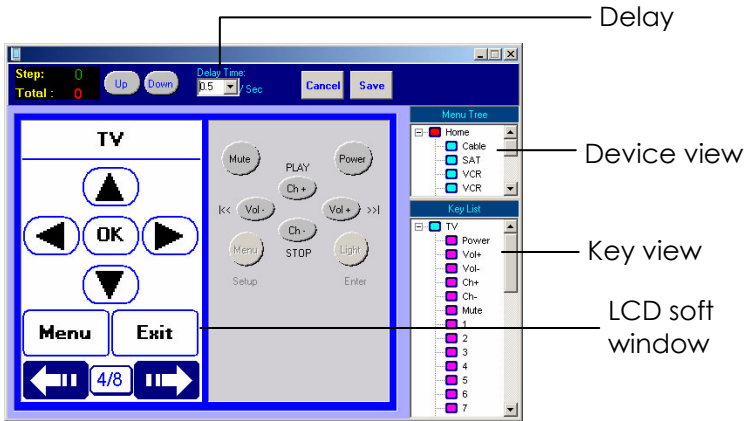


7. Click the Macro radio button to define the new key as a macro key.

A new Macro tab appears.



8. Select the Macro tab panel.
9. Click **New** to begin creating a new macro.
A new window opens.

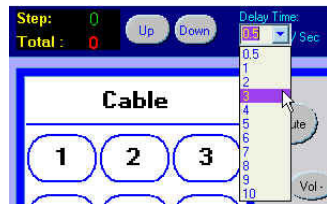


10. Select the first step for your macro. Each step can be any key that has been programmed into your SRC-7000.

Note:

- You can not delete or edit the highlight step before the these steps of your macro were already saved.
- You can store up to 60 commands in one macro.
- Each step of your macro can be any one of the keys you have programmed into your SRC-7000.
- Use the Device View to select the location of the key you require.
- Select the key either by clicking the key in the LCD soft window, or the icon in the Key View.

11. Set the delay after the step using the delay field.



Note:

You can set the delay between commands using the delay field. Once you set the delay, the same delay will be inserted between commands until you change it.

- Continue adding steps with delays until your macro is completed.

Note:

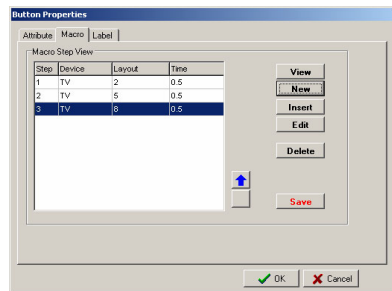
- You can keep track of which step you are currently setting shown on the top left corner of the screen and you can use the Up and Down buttons to go back and make changes.
- If you try to add a new macro key to a macro, the step will be ignored when the macro is run.

- When your macro is complete, press **Save** to return to the key properties page.








Your macro is displayed in list form.

You can highlight any step in the macro and use the arrow keys to move the position up or down.




- Press **Save** to save your macro.



Macro step buttons

| | |
|---|-------------------------------|
|  | View macro step |
|  | New macro step. |
|  | Insert macro step. |
|  | Edit a macro step. |
|  | Delete a macro step. |
|  | Save macro key. |
|  | Move a macro step up or down. |

Note:

- When your macro has been saved you then can use the , or  buttons to edit the highlighted step, or delete the highlighted step.
- You will need to download the new configuration to the SRC-7000 to make it active. See Chapter 6 Communications on page 45 for more information.
- You should also save a copy on your hard disk as a backup. To save the current VMCF file, click the save button  and name it so that you can find it again.

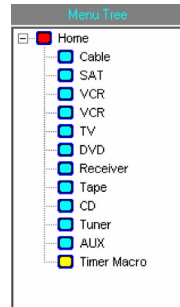
Creating a timer macro

Up to 32 timer macros can be defined. Timer macro keys are the same as ordinary macro keys, but a timer function must be set so that the macro runs at a predetermined time.

To create a timer macro:

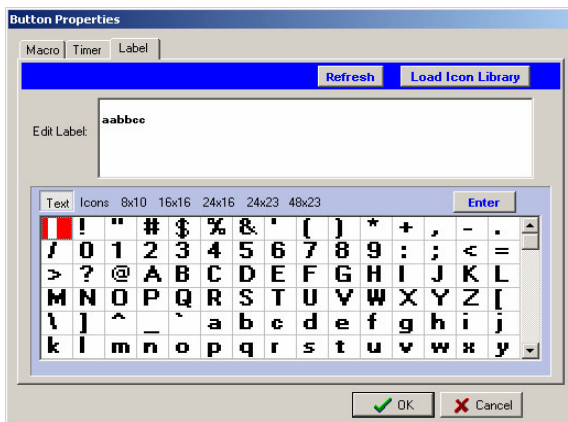
1. Start the RemoteComm software as described in "Starting the software" on page 7.
2. Click on the timer macro in the left hand.

The Home LCD soft window for timer macro keys appears.



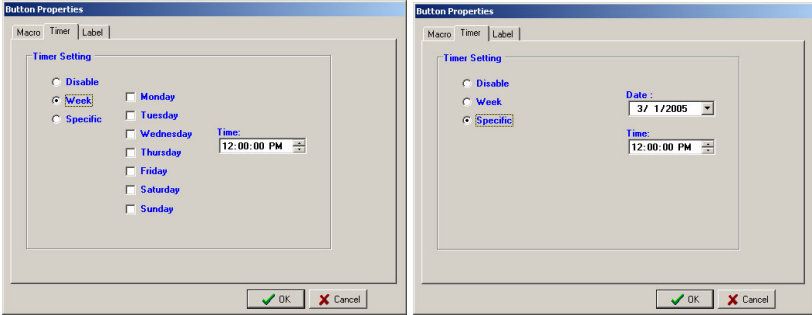
3. Double click the macro timer key to which you wish to apply for the timer.

The button properties window appears.



4. Add a label to the key of using the on-screen keyboard.

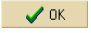
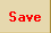
5. Click the Timer tab.



6. Use the radio buttons and the drop down menus to set a weekday for the macro to run, or a specific time and date, or disable the timer function if it is not required.

7. Click the Macro tab.

8. Define a macro as described in Creating a macro key on page 26.

9. Click  to return to the LCD soft window, and click  to save the new configuration.

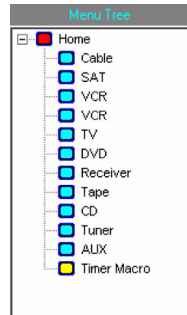
Creating a cycle key

You can create a cycle key for your SRC-7000. A cycle key can combine a number of different keys in one. Each time the key is pressed, the next key is executed. You could program a cycle key with your favorite channels. If your favorite channels are 25, 07, and 67, you could program a cycle key so that it switched the TV to channel 25 the first time you pressed it, 07 the second time you pressed it, and 67 the third time.

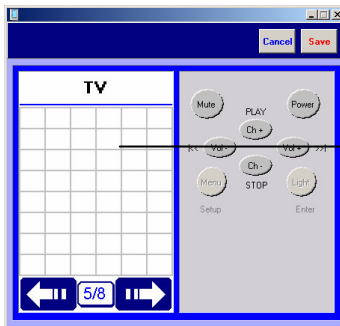
To create a cycle key:

1. Start the RemoteComm software as described in Starting the software on page 7.
2. Click on a device or the Home icon in the left hand panel where you would like your new cycle key to appear.

The Home LCD soft window or the LCD soft window for the device you have chosen appears.

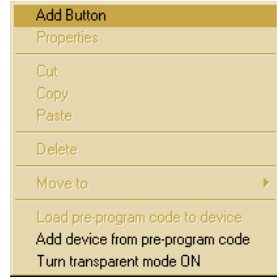


3. Right click on the white background where you want the cycle key to appear.

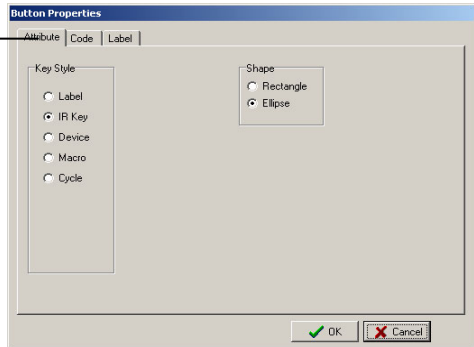


"Right click here to place a cycle key on the page"

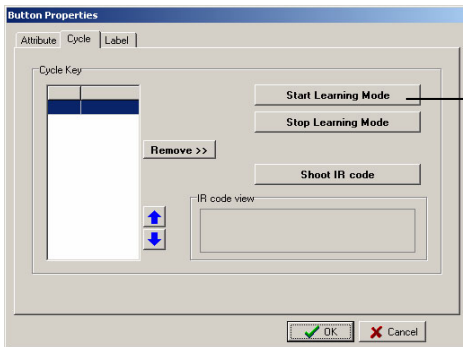
4. SELECT ADD BUTTON FROM THE DROP DOWN MENU.
5. DRAG THE NEW KEY TO WHERE YOU WANT IT TO APPEAR ON THE LCD SOFT WINDOW.
6. Double click the key to display the key properties box.
7. Click the Attribute tab to display the key attributes.



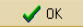

Attributes tab




8. Click the **Cycle** radio button to define the new key as a cycle key.



Press "Start learning mode" button

15. Test your cycle code by selecting the code from the left hand panel, pointing the SRC-7000 at the device and clicking the **Shoot IR code test** button.
16. Click  to return to the LCD soft window page.
17. Click  in the device window to save the new configuration



Note:

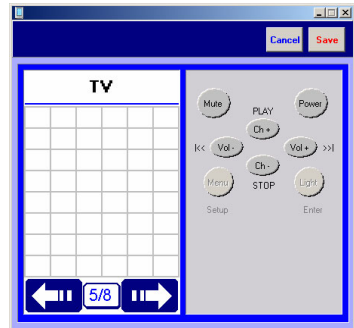
- You need to download the new configuration to the remote control to make it active. See Chapter 6 Communications on page 45 for more information.
- You should also save a copy on your hard disk as a backup. To save the current VMCF file, click the save button  and name it so that you can find it again.

Creating a label

You may want to create a label for one or more of your LCD soft windows. A label is like a page title to remind you what the page contains.

To create a label:

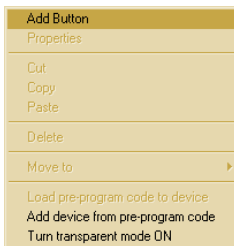
1. Start the RemoteComm software as described in Starting the software on page 7.
2. Click on the device that requires a label in the left hand panel.
3. When the LCD soft window appears for that device, click the next  and previous  buttons to display the page on which you want to add a new label.



Note:

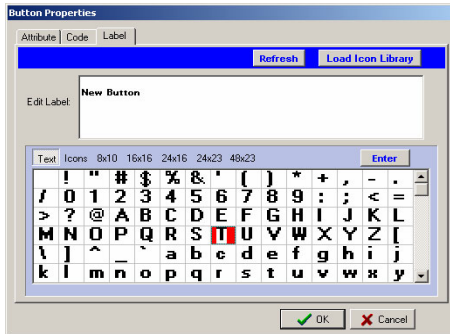
You can also add a label to the Home LCD soft window (SRC-7000 main screen).

4. Right click on the white background and select **Add button** from the drop down menu.

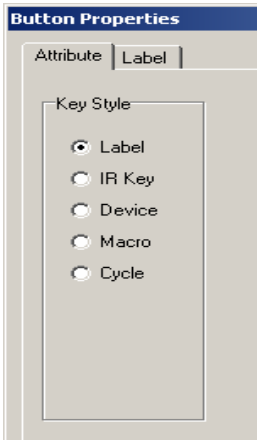


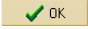
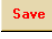
A new key will appear in the top left corner of the LCD soft window. You can drag the new key to a new position on the screen with the mouse.

5. Double click on the new key to display the key properties window.
6. Give the key a name using the keyboard, or select the text or icons from the on-screen keyboard.




7. Click on the Attributes tab to display attributes for the new key.



- Click the **Label** radio button to define the new key as a label.
- Click  to return to the previous screen.
- Click  to save your new key.

Note:

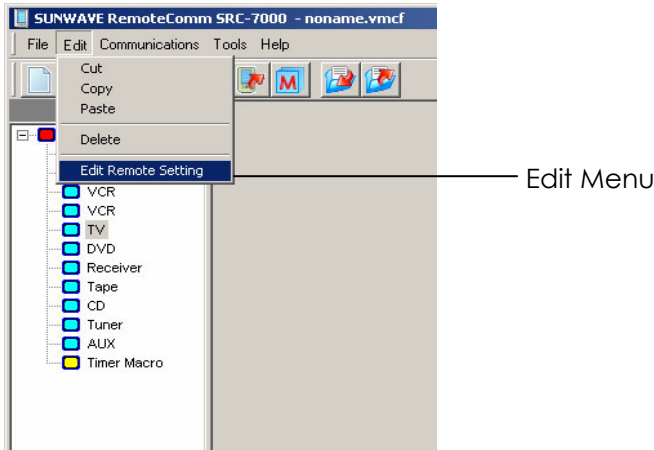
- You need to download the new configuration to the remote control to make it active. See Chapter 6 Communications on page 45 for more information.
- You should also save a copy on your hard disk as a backup. To save the current VMCF file, click the save button  and name it so that you can find it again.

Editing the remote control configuration

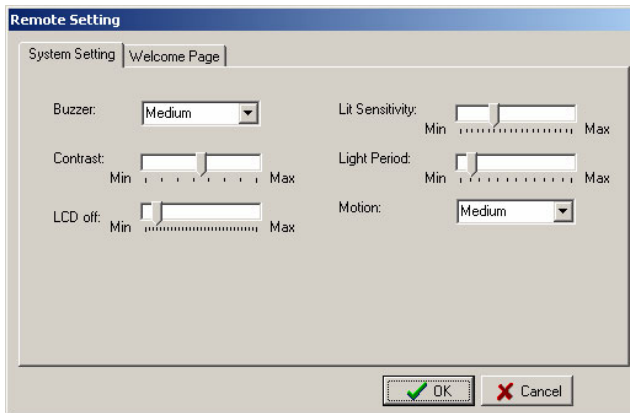
You can edit remote control configuration using the **Edit Configuration** function.

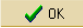
To edit the remote control configuration:

- Start the RemoteComm software as described in Starting the software on page 7.
- From the edit menu, select Edit Remote Setting.




The Remote Setting window appears.



3. Use the sliders and drop down boxes to configure the remote control characteristics. You can also turn off the welcome screen here by un-checking the Welcome page box.
4. Press  to complete your changes and return to the main screen.

Note:

- You need to download the new configuration to the remote control to make it active. See Chapter 6 Communications on page 45 for more information.
- You should also save a copy on your hard disk as a backup. To save the current VMCF file, click the save button  and name it so that you can find it again.

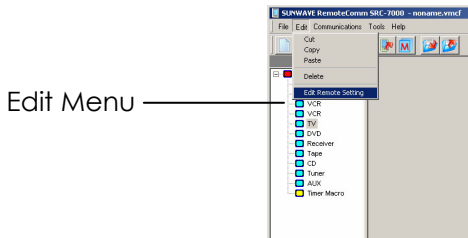
Customizing your welcome page

You can add your own welcome page that displays when the SRC-7000 powers up.

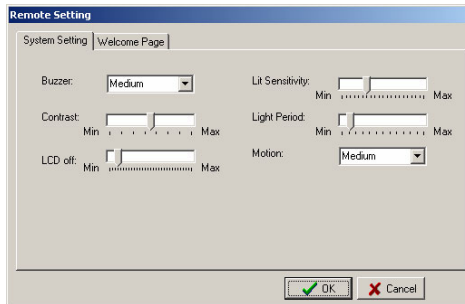
Note: Only low resolution 104 x 160 black and white images may be used for the welcome page.

To load your own welcome page:

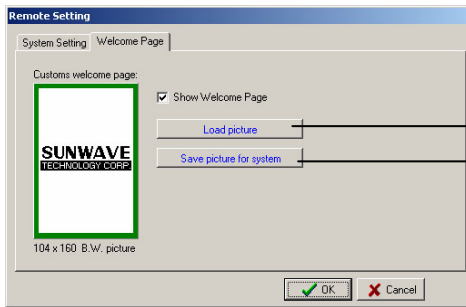
1. Start the RemoteComm software as described in Starting the software on page 7.
2. From the edit menu, select Edit Remote Setting.



The Remote Setting window appears.



3. Click on the **Welcome Page** tab to display the welcome page settings.



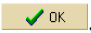
Load picture button

Save picture for system button


4. Click the **Load picture** button and browse to the location of the new picture.

Note:

Only low resolution (104x160) black and white pictures can be used.

5. Click the **Save picture for system** button to save the new picture.
6. Click .

Note:

- You need to download the new configuration to the remote control to make it active. See Chapter 6 Communications on page 45 for more information.
- You should save a copy on your hard disk as a backup. To save the current VMCF file, click the save button  and name it so that you can find it again.

Chapter 5 Portable model files

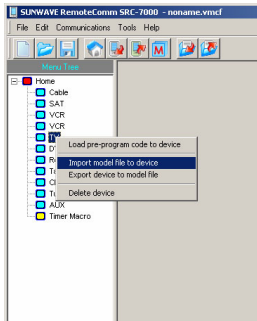
A portable model file is a file that contains all the configuration data for a particular device. Portable model files all have the extension .vmod. You can use RemoteComm software to import and export portable model files.

Importing a model file

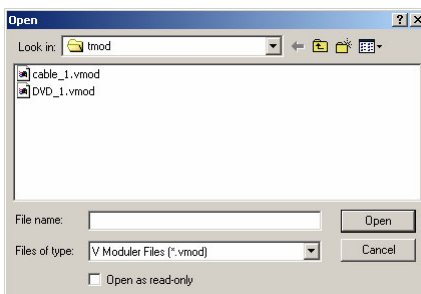
You can configure the SRC-7000 for a particular device simply by importing the portable model file for that device if you have it.

To import a model file:

1. Start the RemoteComm software as described in "Starting the software" on page 7.
2. Right click on the device you want to import to in the left hand panel and select **Import model file to device** from the drop down menu.



3. Select a file to import.



- Click **Open** to import the file.

Note:

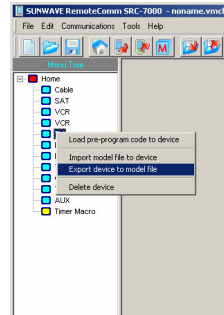
- After you configure the VMOD file in RemoteComm you will need to download the file to remote control to make it active. See Chapter 6 Communications on page 45 for more information.
- You can save a copy on your PC as a backup by clicking the save button and naming it so that you can find it again.

Exporting a model file

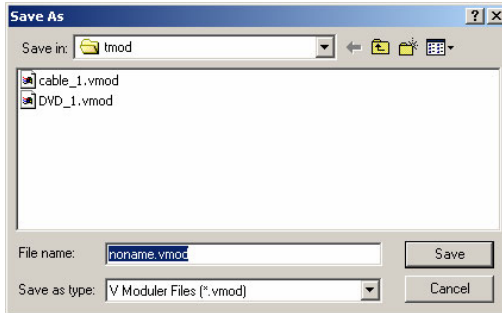
You may want to export a model file as a backup profiles, or to give to someone else.

To export a model file:

- Start the RemoteComm software as described in Starting the software on page 7.
- Right click on the device you want to export to in the left hand panel and select **Export device to model file** from the drop down menu.



The Save As box appears.



- Give the model file a name and click **Save**, to save the file.


Chapter 6 Communications

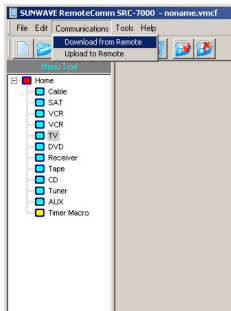
The communications menu enables you to upload configurations to the SRC-7000 that you have made or modified. You can also download the SRC-7000 active configuration to your PC.

Downloading from the remote control

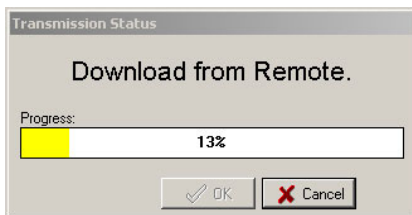
To download a configuration from the SRC-7000:

1. Connect the SRC-7000 to the PC. See SRC-7000 RemoteComm installation on page 6.
2. Start the RemoteComm software as described in Starting the software on page 7.
3. Click **Communications** and select **Download from Remote**

from the drop down menu or click the  icon to start the transmission.



A status bar shows the progress of the download.




The software prompts you to save the current configuration.

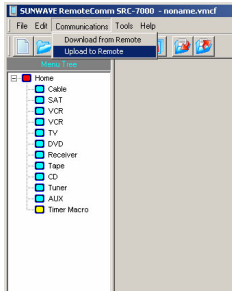
4. Click  to complete the process.

Uploading to the remote control

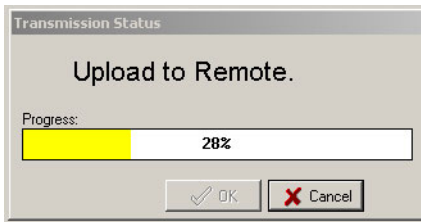
To upload a configuration to the SRC-7000:

1. Connect the SRC-7000 to the PC. See SRC-7000 RemoteComm installation on page 6.
2. Start the RemoteComm software as described in Starting the software on page 7.
3. Click **Communications** and select **Upload to Remote** from

the drop down menu or click  icon to start the transmission.



A status bar shows the progress of the upload.



4. Click  to complete the process.

Chapter 7 Icon Editor Software

You can create your own icons for keys using the Icon Editor software provided with the SRC-7000. This chapter explains how to use the icon editing software to create icons, and how to import them into RemoteComm software.

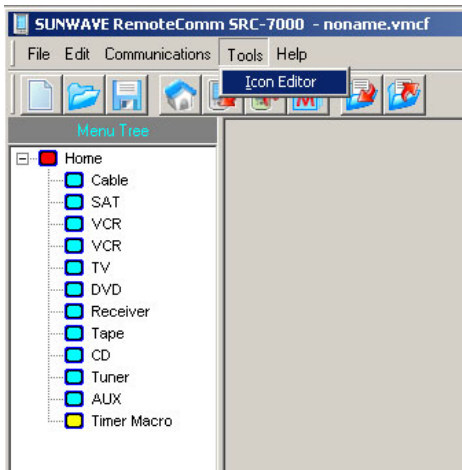
Library files

Use the Icon Editor to create a library of icons. When you have created a library of icons, you can import it using RemoteComm software.

To open an icon library:



1. Open the Icon Editor software of using the icon in the desktop or the Start menu.

Note: You can also open the Icon Editor from the RemoteComm tool bar by clicking "Tools" for quick editing.

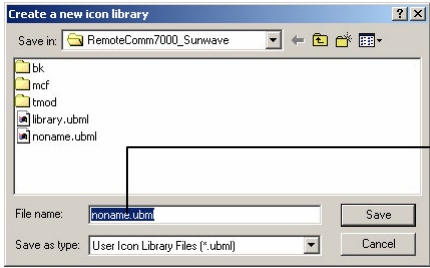


2. Either open an existing icon library or create a new one.

Note: You can make multiple icon libraries and save them with different file names, but you will probably only need to make one library of all your icons.

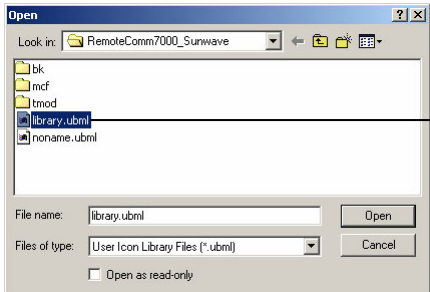
3. Click  to open a new icon library, or click  to open an existing library.

If you open a new library, the following box appears and you must enter a name for the library.



Enter a name for your new library

If you open an existing library, the following box appears and you must choose an existing library to open.




Open an existing library from the list

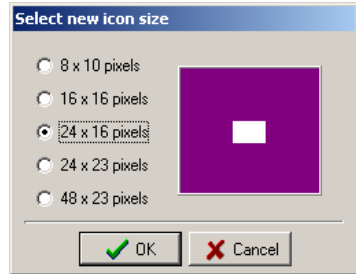
Creating an Icon

Before creating an icon, you must first open a library file. See Library files on last section.

To create a new icon:

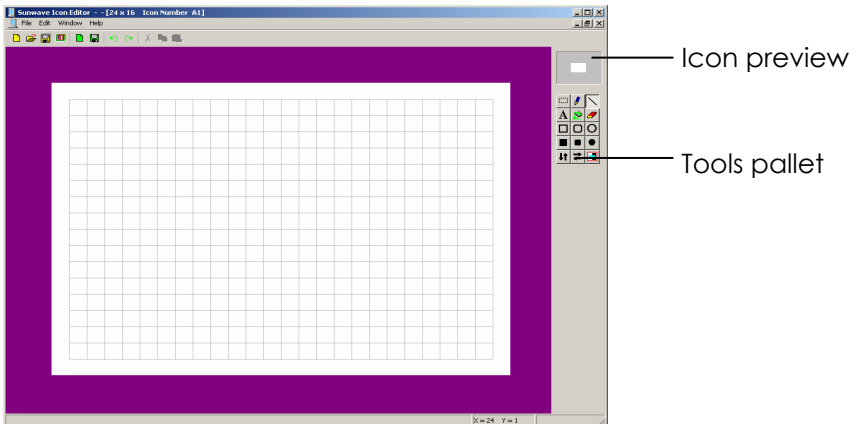
1. Click  to begin creating a new icon.
2. Choose the size of the icon to create.

Note: Some large icons will not fit on the smaller buttons, so make sure you create an icon of the appropriate size.



3. Click .

The following screen is displayed.



4. Use the tools in the tools pallet to create your icon.



Selection tool - Use to select an area



Pencil tool - Use to draw freehand



Line tool - Use to draw straight lines



Text tool - Use to add text and new paragraphs and to edit and add emphasis to all language fonts uploaded to Icon Editor



Flood fill tool - Use to fill an enclosed area



Eraser tool - Use to erase



Rectangle tool - Use to draw rectangles



Rounded rectangle tool - Use to draw rectangles with rounded corners



Ellipse tool - Use to draw ellipses



Filled rectangle tool - Use to draw filled rectangles



Filled rounded rectangle tool - Use to draw filled rounded rectangles



Filled ellipse tool - Use to draw filled ellipses




Vertical flip tool - Use to flip a selection vertically



Horizontal flip tool - Use to flip a selection horizontally



Invert tool - Use to invert the colors in a selection.


5. Click  to save the finished icon to the library.

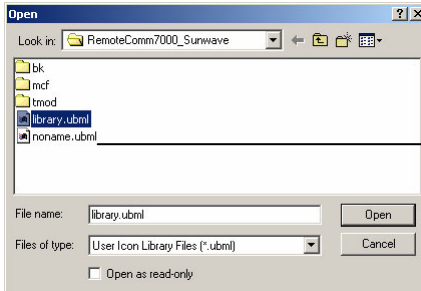
6. Click  to save the library file.

Changing an icon

You can edit any of the icons saved in your icon libraries. Before editing an icon, you must first open an existing library file. See Library files on page 47.

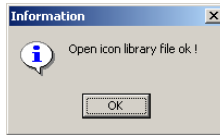
To edit an icon in an existing icon library:



1. Click  to open an existing icon library.
2. Open an existing library from the list.



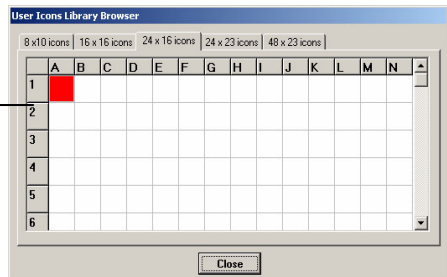
Open an existing library from the list

The following confirmation message appears.

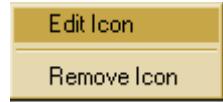


3. Click .
4. Click  to open the icon library browser.




Right click an icon to edit it.



5. Right click on an icon in the library and select **Edit Icon** to edit it. You can also select **Remove Icon** to delete the icon from the library.



Note: The library browser is divided into 5 pages of icons of different sizes.

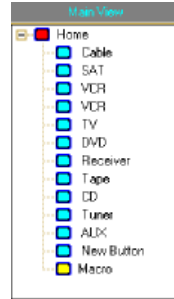
6. Click  to close the library browser window and begin editing the icon.
7. Click  to save the finished icon to the library.
8. Click  to save the library file.

Importing a library

To use the new icons you have created with the SRC-7000, you must import the icon library using the RemoteComm software.

To import an icon library:

1. Start the RemoteComm software as described in Starting the software on page 7.
2. Select the device from the panel on the left of the interface where, the button with the icon is displayed.

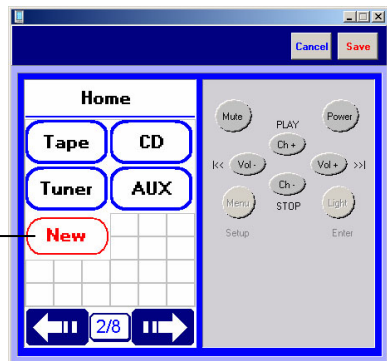


Note:

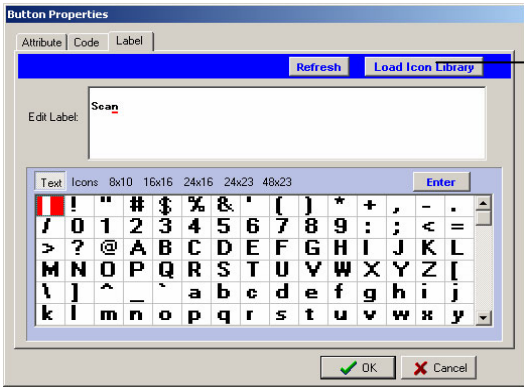
You can import your new edited icons and use them on any keys. If the icon size is larger than the size of the button, the icon can't be shown properly. Adjust the size of the button to accommodate the icon. You may need to use square buttons especially to display some of the larger icons.

Double click the button in the LCD soft window on which you want a new icon to appear.

Double click a button to see its properties



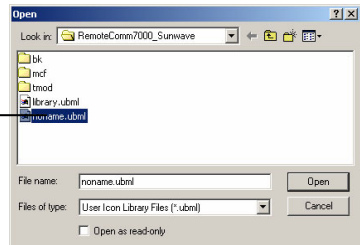
The button properties window appears.



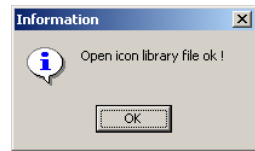
Load Icons Library

3. Click the Load Icons library.

Select a library file from the list



4. Select a library file from the list and click **Open**.
5. Click **Yes** when the confirmation message appears.



The new icons will appear in the user defined icons pages under the label tab in the properties window.

Appendix

Troubleshooting

| Problem | Possible solution |
|--|--|
| Touch screen does not display anything when touched. | *Check the batteries are installed correctly. *The batteries may be discharged. Replace the batteries. |
| The SRC-7000 cannot operate a device after learning a function. | *Check the SRC-7000 has learned the function correctly. Delete the code and teach the SRC-7000 again. *Check you used the correct remote to teach the SRC-7000. *The SRC-7000 cannot learn all codes. You may not be able to program the SRC-7000 for some devices or functions. |
| Cannot transmit between two SRC-7000s (using the optional SLC-2080 cable). | *Check the batteries in both remotes. *Make sure the cable is connected properly. |
| Learning does not work. | *The batteries may be discharged. Replace the batteries. *Check the remote is correctly aimed at the SRC-7000's learning eye. *Check the remote's IR transmitter is 5 ~ 10 cm from the SRC-7000's learning eye while learning. *Check you are holding the remote's button until the function is learned. *Do not teach the SRC-7000 near incandescent lights. *Check the SRC-7000 has learned the function correctly. *The SRC-7000 cannot learn all codes. You may not be able to program the SRC-7000 for some devices or functions. |

| Problem | Possible solution |
|--|--|
| Macro does not work. | *Check you are using the SRC-7000 within the effective transmission distance (8 ~ 10 m) The batteries may be discharged. Replace the batteries. *Check that the macro is programmed correctly. Re-program the macro. *Make sure the SRC-7000's IR port points at all the devices you want to control. *Re-arrange order of macro commands. |
| A button on your existing remote performs two or more functions. | *Some remotes issue multiple codes when a single button is pressed. Teach separate buttons on the SRC-7000 for these different codes |
| The touch screen turns off. | *The SRC-7000 has a power-saving feature and switches off automatically after 90 seconds of inactivity. To switch it back on again, move the SRC-7000. |
| Can't transmit configuration between PC and SRC-7000. | *Make sure the SRC-7000 shows main menu LCD before the transmission. *Turn on the SRC-7000 before transmission. *Make sure you have properly installed the SLC-2080 USB cable driver. *Check all connections. *Ensure the SRC-7000 batteries are charged. |
| Icons don't display properly. | *Change the button shape and size as required. |