

# X100

## Digital Video Recorder and Product Family Instruction Manual



 **Timespace  
Technology**

© 11<sup>th</sup> August 2005 [V1.51m]

# X100

## Digital Video Recorder and Product Family Instruction Manual

### CONTENTS

Contents.....	2
System Overview .....	5
X100 Digital Video Recorder .....	6
Installation.....	7
Mounting Diagram .....	7
Rear Panel .....	8
Front Panel.....	9
Connector Specifications.....	10
Alarm Connector, Din Connector .....	10
X100 Modem Connector .....	10
X100 RJ45 (Reviewer) Connector.....	10
Cable Specifications .....	11
X100 RJ45 Reviewer Socket to PC Cable .....	11
X100 Modem Socket to GSM/PSTN Modem Cable .....	11
X100 to Reviewer Cable .....	11
Anti-Vibration Kit (T406).....	12
Programming .....	16
Help Screens .....	16
Software Updates .....	17
X100 & Hard Disk Cartridge LED Indicators .....	18
Operation.....	21
Playback & Recording .....	21
Camera Switcher.....	22
Zoom, Search and Help.....	23
Jump to Time.....	24
File System.....	25
Loop Recording .....	25
Single Pass Recording .....	25
Example - day long files .....	26
Example - hour long files .....	27
Example - 10 minute files .....	28
Write-Protection.....	29
Putting footage back onto an X100.....	30
JPEG Compression.....	31
PC Access Precautions .....	31
Permitted on a PC.....	31
Not Permitted on a PC .....	31
Permitted with Caution on a PC .....	31

Watermark .....	32
Watermark Definition .....	32
Accessing Watermark.....	33
Watermarks and PCLink Split Utility .....	33
Hard Disk Cartridge .....	33
Thermal Design .....	34
Forced Ventilation Within Enclosures .....	34
Low Temperatures.....	35
The Menu System .....	36
Help Screens .....	36
Default Settings .....	36
Menu Navigation .....	37
Main Menu.....	38
Normal Recording Menu.....	39
Recording time, disk size and recording rate.....	41
Timer Recording Menu .....	42
Timer Menu .....	43
Alarm Recording Menu .....	44
Recording History (Files) Menu .....	46
File Listing.....	46
Voluntary Write-Protection .....	46
Jump to File .....	46
Alarm Input Menu .....	47
Alarm Output Menu .....	48
Video Switcher Menu.....	49
Other Menus.....	50
Password Menu.....	51
Hints.....	51
Examples .....	52
Monitor Menu .....	53
Camera Text.....	54
Current Date Menu.....	55
Statistics Menu .....	56
Advanced Menu .....	57
Low Power Standby Mode .....	57
File System Menu.....	60
Check Files Menu.....	62
Reset System Menu .....	63
SMS Message Menu .....	64
Sending emails via a gateway.....	66
X101 Reviewer.....	67
Mounting Diagram.....	68
Operation.....	69
Camera Tester.....	69
Using the X201 Reviewer with the X100.....	70
Accessing / Storing Images.....	72
PCLink V2.21 .....	72
Introduction.....	72
V2.21 enhancements over V2.1 .....	72
Minimum Requirements.....	72
Installation .....	73
Starting PCLink .....	73
Installing Cartridge.....	73
PCLink v2.21 Quick Reference.....	74
Operating PCLink .....	75
Camera Buttons .....	75
Camera Display Mode Buttons.....	76

Camera Windows.....	76
Zoom.....	76
Play Controls.....	76
Timeline Selectors.....	77
Timeline Marker Flags.....	77
Video Information Panel.....	78
Speed Control.....	78
Watermarks.....	78
Password.....	79
File Transfer.....	79
Pasting Image to Art Package.....	80
RemoteLink V1.1.2.....	81
Introduction.....	81
Overview.....	81
Hardware Required.....	82
Specification of Cabling.....	82
RJ12 Power Cable.....	82
RS232 Serial Cable.....	82
Installation.....	83
1 Configure the SIM card.....	83
2 Insert SIM card into modem.....	84
3 Load V1.5 software onto X100 system.....	84
4 Connect modem equipment.....	84
5 Install Remote Link V1.1.2 onto PC.....	84
Running RemoteLink.....	85
Selecting a modem.....	86
Entering / managing phone numbers.....	87
Contacting a remote unit.....	88
Remote operation.....	89
Removing RemoteLink.....	89
OBA to AVI File Converter V1.1.2.....	90
Introduction.....	90
Usage.....	90
Transferring Files to PC.....	92
USB Interface Kit (T403-USB).....	92
FRAME Interface Kit (T403-FRM).....	92
Transferring Images to Video Tape.....	92
Appendix.....	93
Safety.....	93
X100 EMC Conformity (CE Mark).....	93
X100 EMC Conformity (E Mark).....	93
X100 EMC Conformity (Specification 5).....	94
Guarantee.....	94
Specifications.....	95
X100 Digital Video Recorder.....	95
Removable Hard Disk Cartridge.....	96
X101 Reviewer.....	96
Troubleshooting.....	97
Error Messages and Other Messages.....	97
Possible Problems and FAQ's.....	100
X100.....	100
X101.....	100
T406.....	101

# SYSTEM OVERVIEW

The X100 is a digital video surveillance recorder for use in covert, portable and mobile applications.

Recordings are made on a removable hard disk cartridge inserted in the X100. After the hard disk cartridge has been removed, the recordings can be accessed by connecting the cartridge to a PC, using either USB or Frame Interface Kits, which includes PCLink, a proprietary reading and archiving software package.

**The use of Hard Disk Cartridges other than those supplied by Timespace Technology will invalidate the warranty of the X100 recorder, and will constitute a breach of the X100 operating software copyright.**

The X101 Reviewer is used to program the menu settings on X100, to check camera views and to review recordings on the installed X100 hard disk cartridge. Recording will continue during this reviewing process.

The X100 and X101 are available in either PAL or NTSC models.

The 24-hour clock is used for all times and settings.

**WARNING: The X100 Recorder must always be mounted so that there is a free flow of air around it. If it is mounted in an enclosure, it is essential that adequate ventilation is provided, and it is recommended that a fan is incorporated in the enclosure design.**

**WARNING: If the X100 Recorder is mounted in a vehicle, or otherwise subject to vibration, suitable damping must be built into the mounting.**

**WARNING: Hard disk cartridges are sensitive to shock, vibration and humidity.**

# X100 DIGITAL VIDEO RECORDER



# Installation

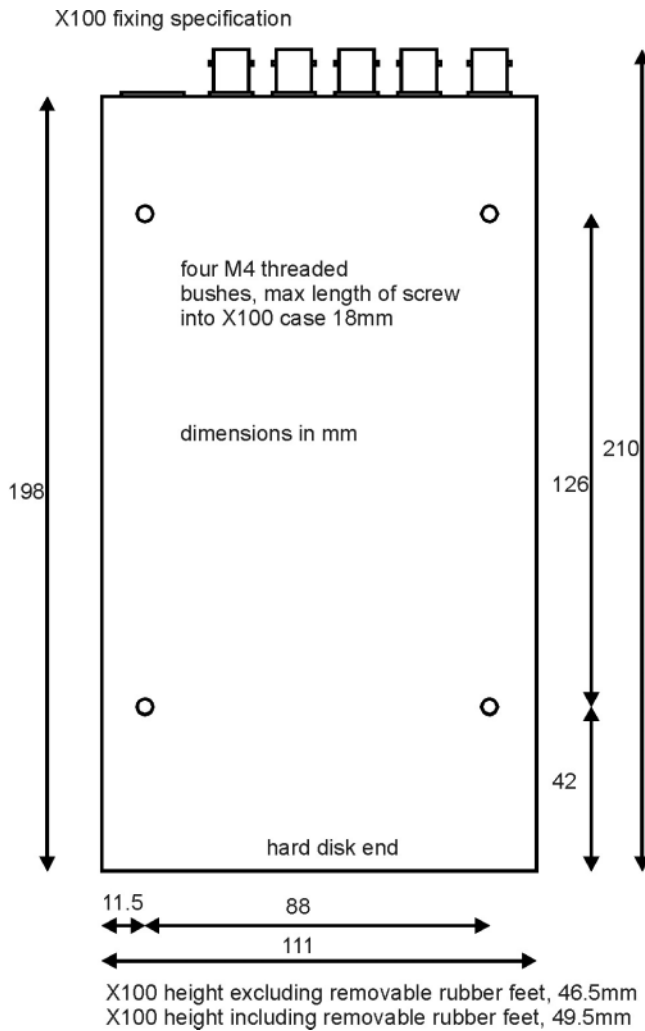
The X100 can be used free-standing or it can be mounted on a wall or bulkhead.

Power can be applied to X100 either via 12V DC jack socket (use PSU supplied with X100), or 12V screw terminals. **NB: Do not use both power inputs simultaneously.**

The Hard Disk Cartridge (supplied separately) with lock on the front in "Off" position should be inserted into receptacle in front panel of X100 and gently but firmly pushed into place, then lock switched to "On" position.

## Mounting Diagram

4 x threaded holes are available in the back panel of the X100 for mounting:





## Rear Panel

Video Out	For connection to external monitor
Video In (BNC)	Connect cameras 1 to 4 to these sockets
Video In (DIN)	Connect cameras 5-8, using 5 pin 180° DIN locking plug (Deltron part 590-0500; Farnell order code 590-0500).
DC Power Socket	For PSU supplied only (use DC power terminals where possible)
DC Power terminals	1 x pair screw terminals to be used in preference to Socket
Alarm Inputs	4 x pair screw terminals (cameras 1 to 4 only)
Alarm Output	1 x pair screw terminals
Modem	For connection to GSM modem





## Front Panel

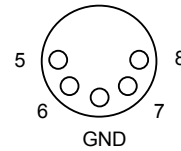
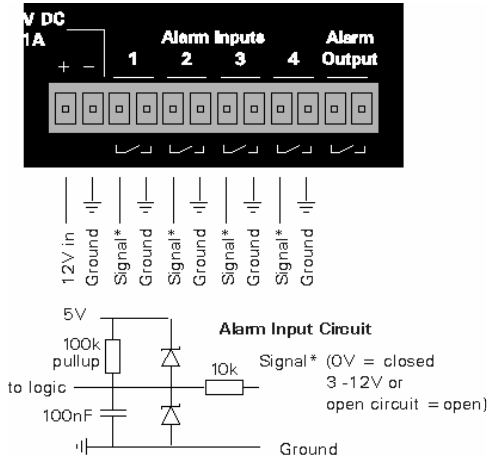
Main Bay  
On/Off  
Power LED

Recording LED  
Disk Status LED  
Reviewer

Insertion of hard disk cartridge  
Power to X100 (menu enabled)  
Flashing in low power standby mode,  
On all the time for normal operation  
On when recording  
On when disk full (applies to single pass recording only)  
Connection to X101 Reviewer (power, video and keypad control)

## Connector Specifications

### Alarm Connector, Din Connector



DIN SOCKET CONNECTIONS (looking at rear panel) Video inputs 5 to 8

### X100 Modem Connector

Arranged as per IBM PC 9 pin serial port. The connector is a 9 way D-Type female connector.

	IN/OUT
1 DCD	IN
2 RD	IN
3 TD	OUT
4 DTR	OUT
5 GND	
6 DSR	IN
7 RTS	OUT
8 CTS	IN
9 RI	not connected within X100

### X100 RJ45 (Reviewer) Connector

The pin configuration of the RJ45 connector is proprietary. It must not be connected to an Ethernet network.

Pin 1 is the pin closest to the centre of the X100 front panel.

1	Video Out	Use 1 and 2 for Video Out
2	GND	
3	GND	
4	RD	IN (serial connection RS232)
5	TD	OUT (serial connection RS232)
6	Reviewer detect, pulled up to 5V internally.	Connect to GND for Reviewer
7	GND	3 and 7 power / RS232 ground
8	+12V DC output	This is directly connected to the +12VDC input on the X100

## Cable Specifications

### X100 RJ45 Reviewer Socket to PC Cable

This cable is used to connect a PC to the X100 RJ45 (Reviewer) socket.

9 way D-Type female connector to RJ45 plug.

[Typically use a standard CAT5 cable [EIA/TIA 568B wiring standard (straight 1-8 to 1-8 connection)] and cut and wire onto the D type connector]

Connect pins as follows:

RJ45 Cable	Modem Plug
1 White with orange stripe	
2 Orange (with white stripe)	
3 White with green stripe	Pin 5
4 Blue (with white stripe)	Pin 3
5 White with blue stripe	Pin 2
6 Green (with white stripe)	
7 White with brown stripe	Pin 5
8 Brown (with white stripe)	

Cable wires 1, 2, 6 and 8 can be cut back (not connected)

### X100 Modem Socket to GSM/PSTN Modem Cable

9 way D-Type female to 9 way D-Type male connectors.

Connect all pins straight through

1-1

2-2

3-3

4-4

5-5

6-6

7-7

8-8

9-9

### X100 to Reviewer Cable

Standard CAT5 cable (shielded) [EIA/TIA 568B wiring standard (straight 1-8 to 1-8 connection)]

# Anti-Vibration Kit (T406)

Please adhere to the following instructions for the installation of the Anti-Vibration Kit. Failure to do so may result in the Mounting System not working correctly.

## Section A – Inventory Of Parts

The Anti-Vibration Kit consists of the following parts -

QTY	Description
4	Wire Rope Mounts
1	Stabiliser Coupling
8	Zinc Plated M4 x 10mm Counter-Sunk Hex-Head Screws.

In addition you will require a standard 'L' shaped hex key. This is essential, as when all of the other screws have been tightened, there is no room for any other tool to tighten the front lower pair of screws.

## Section B - Mounting Surface/Enclosure Preparation

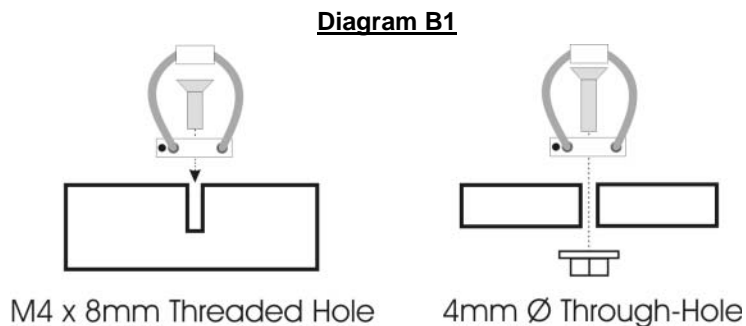
### Mounting Hole Preparation

Drill four mounting holes to attach the Wire Rope Mounts. If you intend to use the M4 x 10mm screws into blind holes, then the holes will have to be drilled and tapped to accept an M4 screw, with a thread depth of no less than 8mm.

If mounting the Wire Rope Mounts through a metal plate, then longer screws may have to be used in order to allow a washer and nut to be attached on the other side of the plate. The length of these screws will have to be chosen depending on the thickness of the plate and the height of the washer and nut.

Please note that any screw used for mounting the wire rope mounts to an enclosure surface must have an M4 thread and have a counter-sunk hex-head.

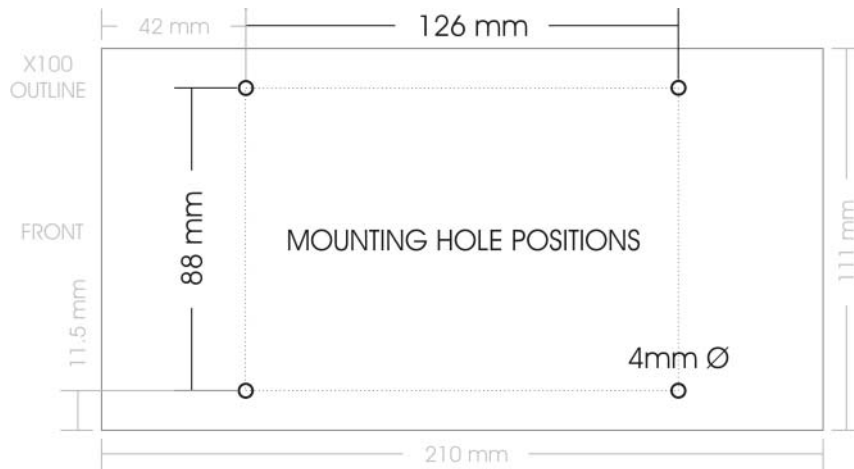
Please refer to Diagram B1 for details of blind and through-hole mounting.



### Mounting Hole Location – X100

The mounting holes must be drilled on 126mm and 88mm centres. This is shown in diagram B2.

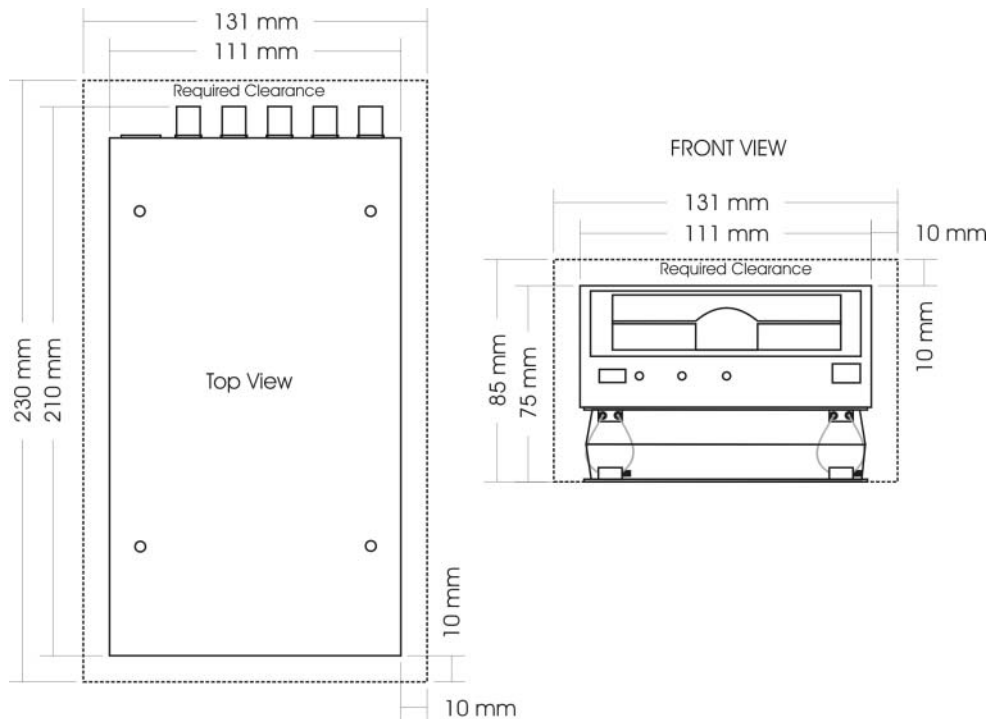
**Diagram B2**



**Total Mounting Volume Required – X100**

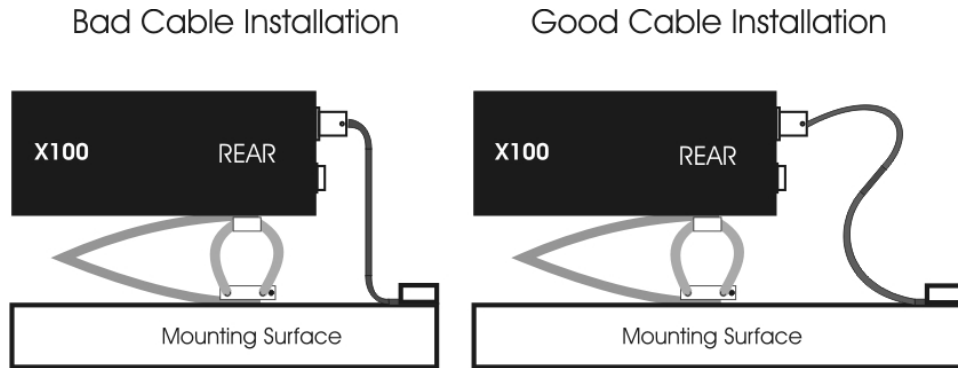
It is necessary to allow a minimum clearance of at least 10mm around the body of the X100 when mounted on the T406 Anti Vibration Kit. This is to allow free movement of the X100 on the anti vibration mounts and to prevent collision with either the enclosure or peripheral systems due to vertical and lateral movement under extreme shock and vibration conditions. Please refer to diagram B3 for exact dimensions.

**Diagram B3**



**Please note that when installing cables to the rear of the X100 it is important not to arrange or clamp them in such a way as to impede the free movement of the rear anti-vibration mounts. Please refer to diagram B4 on the following page.**

**Diagram B4**



**Section C - Installation Procedure**

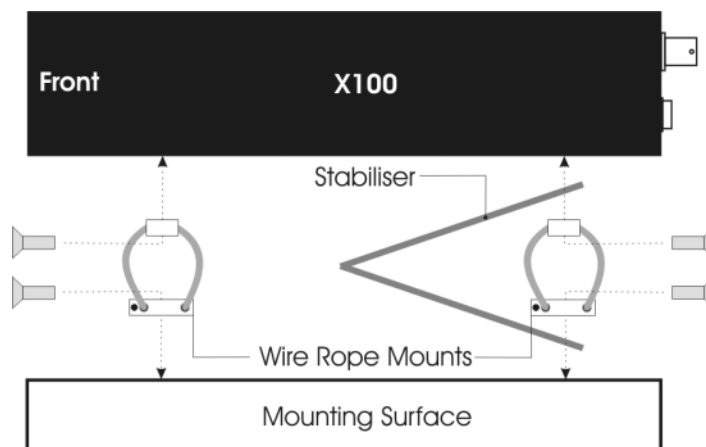
**It is advised that some form of thread-lock compound should be used on the screws securing the wire rope mounts to both the X100 and mounting surface. This is in order to prevent loosening due to vibration.**

- 1) Attach the Wire Rope Mounts to the X100 with four of the countersunk M4 hex-head screws provided and L-shaped hex key. When attaching the rear pair of mounts please ensure that the stabilizer is 'sandwiched' between the mounts and the X100 by aligning the stabilizer holes with the mounting holes in the X100. Please refer to diagram C1.

**Please note that the 'open' end of the C-shaped plastic stabiliser should be attached to the rear wire rope mounts and face backward as shown in diagram C1.**

- 2) Once all of the Wire Rope Mounts have been securely attached to the X100, use a pair of countersunk M4 hex-head screws to attach the bottom 'feet' of the front Wire Rope Mounts to the mounting surface/enclosure.
- 3) Secure the lower 'feet' of the rear Wire Rope Mounts to the mounting surface/enclosure using the remaining pair of countersunk M4 hex-head screws and a standard L-shaped hex key. Ensure that the stabilizer is 'sandwiched' between the lower feet and the mounting surface/enclosure by screwing through the Wire Rope Mount feet, then the stabilizer and into the mounting surface/enclosure.

**Diagram C1**

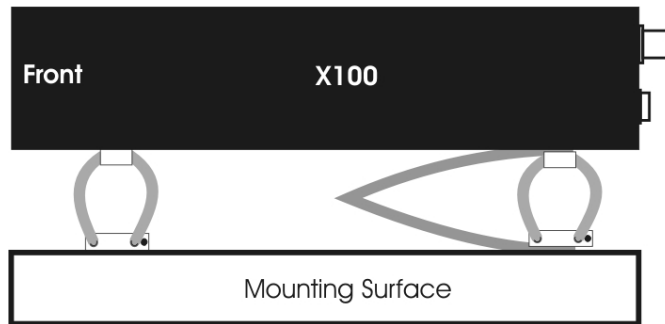


## Orientation of Unit

**The X100 should be mounted in the following horizontal orientation as per diagram C2. This is strongly advised for maximum vibration and shock isolation.**

**Diagram C2**

Horizontal



If it is not possible to mount the X100 in the horizontal orientation then the following vertical orientation as detailed in diagram C3 may be used.

**It must be noted however that this vertical orientation is not as effective at isolating the X100 from vibration and shock as the horizontal orientation as shown in diagram C2.**

The position of the plastic stabiliser, screw types and assembly order remain the same for this mounting orientation.

The X100 must never be mounted by hanging it upside down from a horizontal surface when using this mounting system.

**Diagram C3**

Vertical




# Programming

The configuration of the X100 is by the menu system.

Connect Data Link Cable (supplied with X101 Reviewer) from socket marked "Reviewer" on X100 to socket marked "To Recorder" on X101. This connection will provide power and video to X101 from X100.

**WARNING: When X101 is connected to X100 the power supplied to X100 must be 12V+/- 1.2V. An additional PSU can be connected to "Power In" socket of X101, but to view X100 a BNC cable must be linked from "Out" socket on rear panel of X100 to "Video In" socket on top panel of X101.**

To enter Menu System press  menu key.

## Help Screens

Throughout the menu system, every item that the cursor points to has a Help screen. Place the cursor on the line requiring explanation and press "Help" key on X101 front panel. Use any key to cycle through the screens for that line. No Help screen is available for Statistics Menu.



# Software Updates

Occasionally software improvements are made to X100 and a new version of software is made available. Follow these steps to download new software:

Ensure X101 Reviewer is not connected to X100 Recorder.

Connect serial link cable from "Reviewer" socket on X100 front panel to serial port on PC.

With hard disk cartridge inserted and switched on, hold in "On/Off" button on front panel of X100 then connect power to X100. Release On/Off button. All three LED's on X100 front panel should now be illuminated. Alternately, maintain power to X100, and switch off hard disk cartridge. Hold X100 On/Off button in and switch on hard disk cartridge.

When all three LED's on X100 front panel illuminated, the Recorder is ready for download.

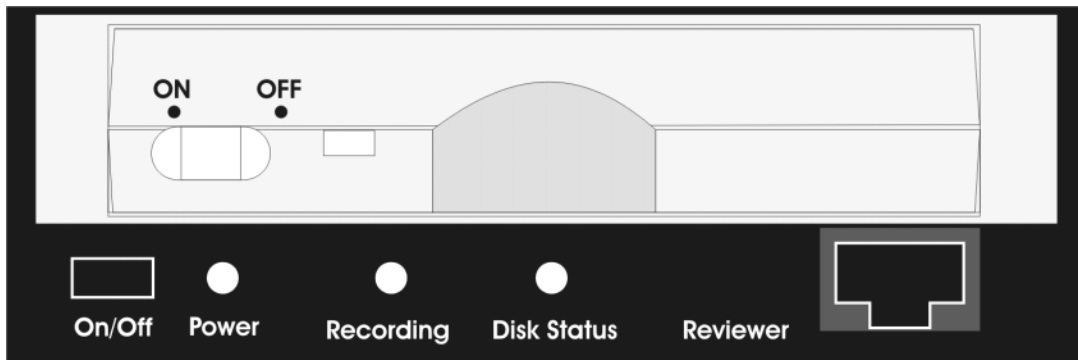
**NB: Full reset will delete all existing recordings on hard disk.**

Wait 40 seconds after download until LED on hard disk cartridge changes from amber to green.

# X100 & Hard Disk Cartridge LED Indicators

The following section describes the normal operation of the front panel LED indicators on the X100 and hard disk cartridge. It may be useful in order to confirm normal operating conditions and situations where a problem may have occurred.

## X100 With Hard Disk Cartridge Inserted



### 1) When an external 12V DC power supply is connected to the X100.

- i) The '*Power*' LED will illuminate to indicate that 12V DC power is being supplied to the X100 via either of the rear panel inputs. The '*Power*' LED will remain illuminated until the power supply is removed or the unit is placed into low power standby mode as detailed in section 4 following.

If the '*Power*' LED is dim and/or the hard disk cartridge does not follow the sequence as in section 2 following, then there may be insufficient voltage to supply the X100.

Please note that the X100 and hard disk cartridge require a 12V +/-1.2V DC power supply.

### 2) When a hard disk cartridge is inserted and switched on.

- i) The hard disk cartridge LED will illuminate green and flash amber intermittently as operating code is loaded into X100.
- ii) The '*Recording*' & '*Disk Status*' LED's will illuminate simultaneously for approximately 1 second and then switch off.

### 3) Whilst recording.

- i) The '*Recording*' LED will illuminate and remain lit for the duration of the recording.
- ii) The hard disk cartridge LED will remain illuminated in green but will intermittently flash amber as data is recorded to the hard disk. The frequency of the amber flashes will depend on the chosen recoding parameters.

#### 4) When the unit is placed in low power standby mode.

In the default setting the X100 is placed into low power standby mode by pressing the front panel 'On/Off' button whilst the unit is in normal operating mode.

This feature may be software configured by accessing the menu system via the X101 reviewer. To change the low power standby mode setting, go to ► *Other Menus* ► *Advanced*, and use the 'Pushbutton Switches' option. The various options are detailed in the 'Low Power Standby Mode' section of the manual.

- i) The 'Power' LED will flash intermittently.
- ii) The hard disk cartridge LED will switch off.
- iii) The 'Recording' LED will switch off and recording will cease if the X100 is placed into low power standby mode whilst recording.

Please note that the X100 will switch back to normal operation from low power standby mode if the front panel 'On/Off' switch is pressed, the X101 reviewer is attached or the state of an alarm input changes.

Low power standby mode is not accessible unless a hard disk cartridge is inserted and switched on.

#### 5) If the 'Disk Status' LED is illuminated.

The 'Disk Status' LED indicates one of the following conditions.

- i) The hard disk cartridge is full of write-protected files.

In this situation an attached X101 will show the current camera output determined by the video switcher, and the menu system will be accessible as per normal.

The hard disk cartridge will be full due to the options in the X100 'File System' menu having been set to write-protect certain types of recordings (any combination of Normal, Timer & Alarm). The X100 will not re-record (Loop recording) over write-protected recordings and will therefore not make any new recordings once the disk is full of write-protected recordings (Single pass recording).

In order to change the write-protection settings, access the X100 menu with the X101 reviewer and go to ► *Other Menus* ► *File System*. At the top of the 'File System' menu is 'Write Protection For'. Write-protection can then be enabled or disabled for each type of recording as required.

Please refer to the 'File System' section in the manual for more details on which settings to use.

Please note that in its default setting the X100 automatically write-protects Alarm recordings but not Normal or Timed recordings.

- ii) If it has been established that the hard disk cartridge is not full of write-protected files.

In this case the illumination of the 'Disk Status' LED may indicate that the operating code was not loaded from the hard disk cartridge to the X100 correctly when the external 12V DC power supply was last connected and the hard disk cartridge switched on.

In this situation an attached X101 will show 'snow' on the screen and the menu system will not be accessible.

In order to reset the system and reload the operating code, either switch the cartridge to the off position and wait at least 5 seconds before switching back on or disconnect the external power supply from the X100 and wait at least 5 seconds before reconnecting.

If the *'Disk Status'* LED remains illuminated after reset, then the operating code on the hard disk cartridge may be corrupted, there may be corrupted recording files on the disk or the hard disk itself may be damaged.

If the *'Disk Status'* LED remains illuminated after resetting the system as described previously, then please contact the equipment supplier.

**6) If the *'Recording'* & *'Disk Status'* LED's flash twice, instead of once, when the hard disk cartridge is switched on.**

If this occurs instead of the usual sequence as described in section 2 previously, then the X100 has entered a mode reserved for Timespace Technology engineers to adjust factory settings.

To exit this mode, either switch the cartridge to the off position and wait at least 5 seconds before switching back on or disconnect the external power supply from the X100 and wait at least 5 seconds before reconnecting. If the same situation reoccurs after the external 12V DC power supply has been reconnected, then please contact the equipment supplier.

**7) If the *'Recording'* & *'Disk Status'* LED's remain illuminated when the hard disk cartridge is switched on.**

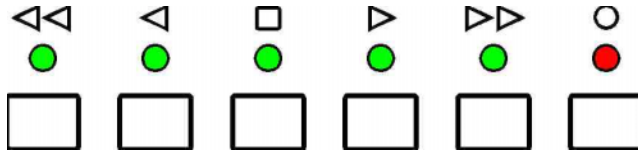
If this occurs it indicates that the hard disk cartridge is ready to download new operating software. Please refer to the *'Software Updates'* section in the manual for the correct procedure for downloading software to a hard disk cartridge.







If this state has been triggered accidentally, either switch the cartridge to the off position and wait at least 5 seconds before switching back on or disconnect the external power supply from the X100 and wait at least 5 seconds before reconnecting. This will re-start the X100 and hard disk cartridge in normal operating mode.

# Operation

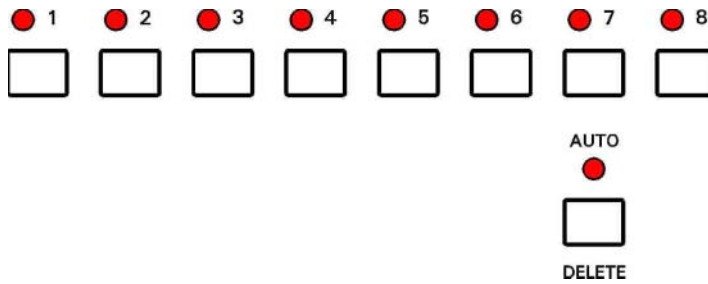
To set up and operate the X100 an X101 Reviewer is required.

## Playback & Recording



-  **Rewind** through recorded footage. The normal wind interval is 1 minute. Pressing the button again increases the wind interval to 5 minutes. Repeated presses increase the interval to 10 / 20 and finally 60 minutes. This rapid scan mode enables fast, flicker-free searching through recorded material. If the LED above the stop button is lit the unit is in jog mode and the rewind button will rewind through recorded footage frame by frame, with intervals of 1 minute.
-  **Reverse-play** through recordings. If the LED above the stop button is lit (jog mode), the reverse-play button will jog to the previous frame. If the oldest frame has been reached, reverse playback will stop. Note that reverse play only operates on images that have been first played in a forward direction.
-  **Stop** playback. If playback is already stopped, pressing this button again lights the LED above and the unit is in jog mode, allowing frame-by-frame playback.
-  **Play** recorded footage. Pressing play for a second time switches to fast play enabling all the footage to be played through at the fastest rate. If the LED above the stop button is lit, the play button will jog to the next frame. If the most recent frame has been reached, playback will stop.
-  **Fast-forward** through recorded footage. If the LED above the stop button is lit the unit is in jog mode and pressing the fast-forward button will jog forward. Similarly to rewind, repeated presses of the fast forward enable rapid scan in 5 / 10 / 20 / 60 minute intervals.
-  **Record** start or stop. If not currently recording (red LED off), pressing this button will begin recording from the end of the most recent footage, using the settings specified in the Normal Recording menu (see page ). If the unit is currently recording (red LED on), this button will stop recording.

## Camera Switcher



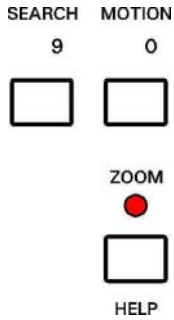
**1-8** Switch the view to camera 1 to 8. When playing back recorded footage, pressing buttons 1 to 8 changes playback to that camera. If the AUTO LED is lit, buttons 1 to 8 change the live camera being viewed. This camera is held on the main monitor.

**AUTO** Activate the auto switcher mode. In this mode, the monitor will show a live view and the cameras are cycled as specified in the "Video Switcher" menu. Press the AUTO button again to deactivate the auto switcher mode. If any of the buttons numbered 1-8 are pressed while in auto switcher mode, the camera switching is stopped, and the selected camera view is held on screen.

**DELETE** When using menus this button is used to delete numbers.

Control of the auto switcher does not affect any recording in progress.

## Zoom, Search and Help



- ZOOM** Zoom in on a frame from recorded footage (in black & white). Use the menu navigation buttons (see next page) to pan around the enlarged image. Press the ZOOM button again to return to original size. When the zoom function is active, the ZOOM button will be lit.
- HELP** Applies when using any menu. Pressing this button will produce a help screen. Continue pressing any key to cycle through help screens until menu returns.
- SEARCH** Go to a specific time and date in the recorded footage. Pressing this button will enter the "Jump to Time" screen. If the footage on a given camera cannot be found (it may not have been recorded), a "NO CURRENT IMAGES ON CAMERA" message will be displayed. If there is no footage at the time specified a jump is made to the nearest footage to the time given.
- See the next page for further information on Jump to Time.
- MOTION** This key is reserved for future use.

## Jump to Time

```
JUMP TO TIME
-----
TIME: >14:45:00
DATE: >17/08/98

>JUMP TO TIME ABOVE
>JUMP TO OLDEST
>JUMP TO LATEST

EXIT
```

This is the "Jump to Time" menu, which is displayed after pressing the SEARCH button, and allows instant access to any time (on the minute) and date in recorded footage.

- **TIME** - Type a time using the numbered buttons.
- **DATE** - Type a date using the numbered buttons.
- **JUMP TO TIME ABOVE** - Hit the right arrow menu key to jump to the time entered in the time and date fields.
- **JUMP TO OLDEST** - Jumps to the oldest recordings on disk.
- **JUMP TO LATEST** - Jumps to the newest recordings on disk.

If the footage cannot be found for a particular camera (the camera may not have been recording at that time / date), a NO CURRENT IMAGES ON CAMERA "n" message will be displayed ("n" being the selected camera view).

If there are no recordings available at a current time specified the JUMP TO TIME function will jump to the nearest available footage. A jump can only be made to a full image and the JUMP TO TIME function will jump to the nearest available full image (key frame).

You must use leading zeros for the time and date where necessary, e.g. 09:45 and 04/07/98.



# File System

Any disk removed from the X100 recorder can be viewed on a PC and recording files (proprietary format .oba files) are displayed. The disk can be connected to the PC using two interfacing methods:

<b>Interface</b>	<b>Details</b>	<b>Product code</b>
1 IDE/USB	Easy connection; 12Mbit/sec transfer rate is adequate for PCLink playback	T403-USB
2 IDE (ATA)	Disk is inserted into PC fastest data rate, but technical PC knowledge required to install frame.	T403-FRM

Once the disk has been connected, the disk shows up as a drive letter (typically D:) on the PC. Recording files can be viewed using Windows Explorer and three examples are given on the next pages.

## Loop Recording

By selecting no write-protection on the recorder:

```
FILE SYSTEM
-----
WRITE PROTECTION FOR:
NORMAL RECORDING: >NO
TIMER RECORDING: NO
ALARM RECORDING: NO
```

it automatically loops deleting oldest recordings first. The record position is stored and any play back will not affect the current record position (this is in contrast to a VHS tape).

## Single Pass Recording

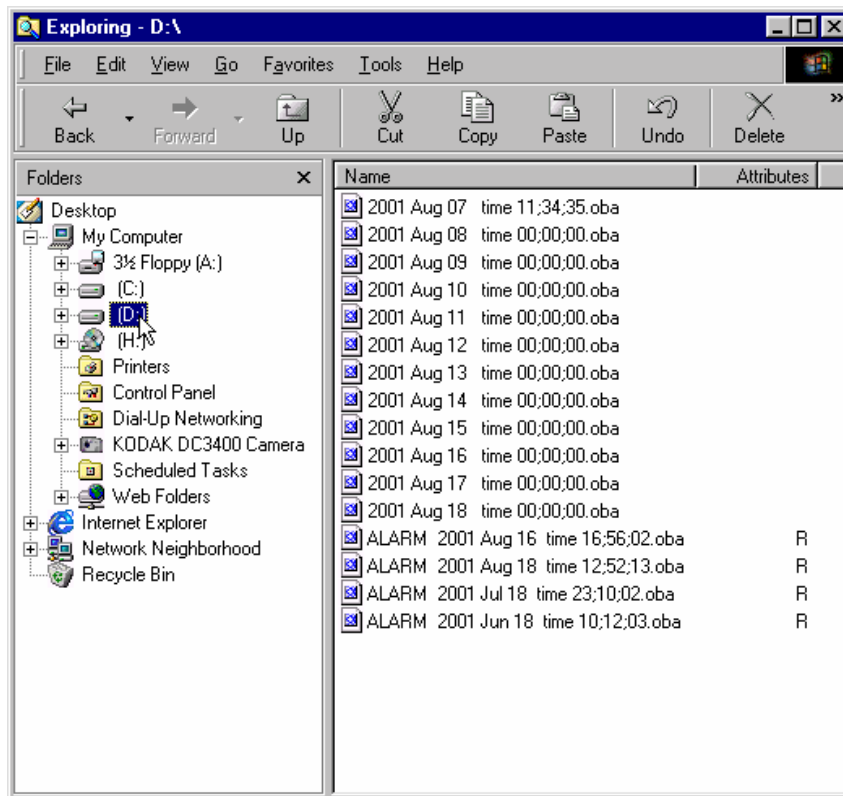
By selecting full write-protection on the recorder:

```
FILE SYSTEM
-----
WRITE PROTECTION FOR:
NORMAL RECORDING: >YES
TIMER RECORDING: YES
ALARM RECORDING: YES
```

it records until it is full and then stops. The disk status LED is lit when it is full. Files may be un write-protected to free up space or else the recordings may be deleted in the RESET menu.

Write-protection can be used to keep Alarm recordings but loop the background (Normal) recording.

## Example - day long files



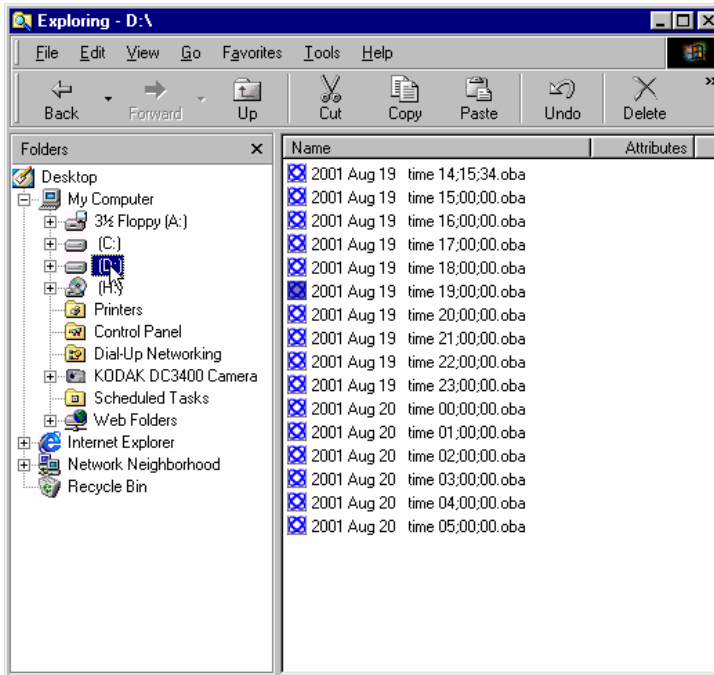
In the above example the contents of the X100 hard disk cartridge are displayed (D:). 12 files have been recorded one for each day from 7<sup>th</sup> Aug to 18<sup>th</sup> Aug. Before this recording period and within this recording period 4 alarm events were generated and these are stored in event files "ALARM .... .oba". Alarm events have been automatically write-protected (R character meaning READ ONLY) and will never get overwritten by the recorder. The other non write-protected files are overwritten oldest first in a looping manner automatically by the recorder.

The FILESYSTEM menu on the X100 (OTHER MENUS -> FILE SYSTEM MENU) controls the way the files are written to the hard disk. Please see the Menu System chapter for more details. The above disk was generated using the following menu settings:

```
FILE SYSTEM
-----
WRITE PROTECTION FOR:
  NORMAL RECORDING: >NO
  TIMER RECORDING:  NO
  ALARM RECORDING:  YES

FILE LENGTH FOR:
  NORMAL / TIMER
  RECORDING:       1 DAY
  ALARM RECORDING: EVENT
```

## Example - hour long files



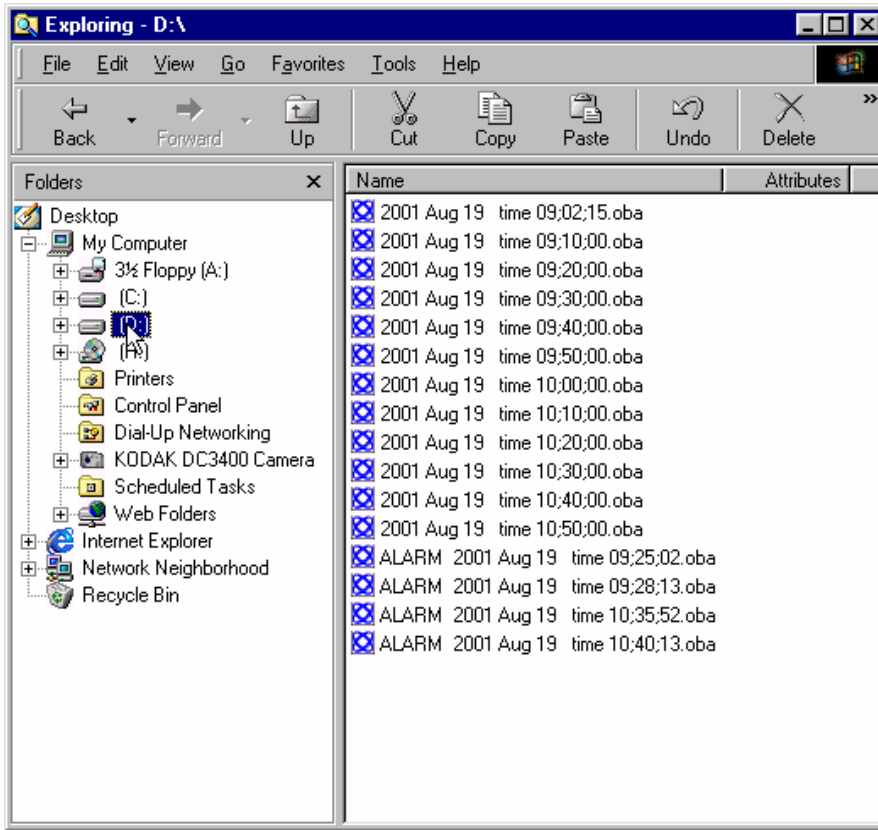
In the above example the contents of the X100 hard disk cartridge are displayed (D:). 16 files have been recorded one for each hour. Recording started at 14:15:34 on August 19<sup>th</sup> and carried on till 05:06:23 on August 20<sup>th</sup>. The time shown indicates the start time of the file (ignoring the seconds). If the user stopped recording during any hour and then started recording again in that hour, the information would be included in the single hour file. 4 alarms were also triggered over the recording period but the alarm recording has automatically been included in the hour files (file length for alarm recording was not set to EVENT but to the same setting as Normal / Timer recording, in this case 1 HOUR)

This example indicates how alarm triggered recordings can be grouped together into hour long files. Alarm recordings can be grouped together into 10 minute files or day long files as selected in the File System menu. The following menu settings were used on the recorder:

```
FILE SYSTEM
-----
WRITE PROTECTION FOR:
NORMAL RECORDING: >NO
TIMER RECORDING: NO
ALARM RECORDING: NO

FILE LENGTH FOR:
NORMAL / TIMER
RECORDING: 1 HOUR
ALARM RECORDING: 1 HOUR
```

## Example - 10 minute files



In the above example the contents of the X100 hard disk cartridge are displayed (D:). 12 files have been recorded covering a period from 9:02:15am to 10:55:12am. Within this recording period 4 alarm events were generated and these are stored in the event files "ALARM .... .oba" . No write-protection has been selected for the alarm recording or normal recording so the oldest files will be overwritten first.

The following menu settings were used on the recorder:

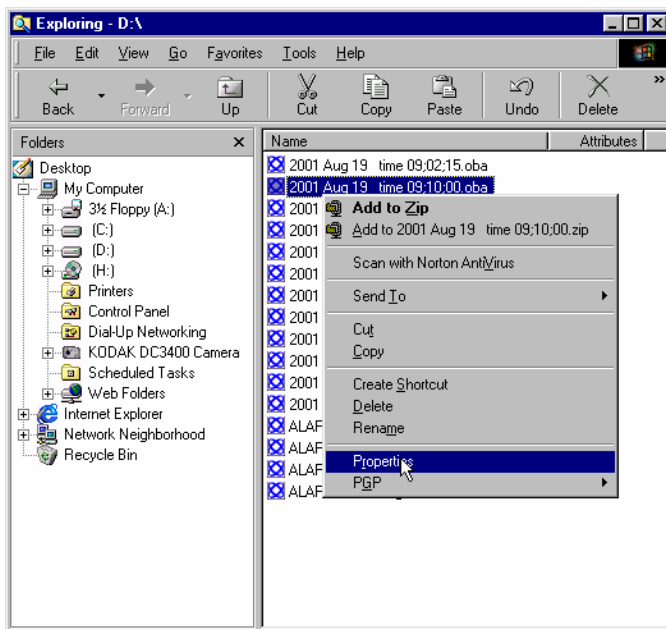
```
FILE SYSTEM
-----
WRITE PROTECTION FOR:
  NORMAL RECORDING: >NO
  TIMER RECORDING:  NO
  ALARM RECORDING:  NO

FILE LENGTH FOR:
  NORMAL / TIMER
  RECORDING:       10 MINS
  ALARM RECORDING: EVENT
```

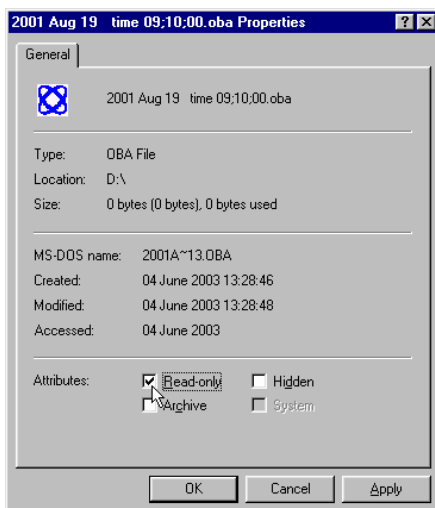
Please refer to the Menu System chapter for further information of the above menu.

## Write-Protection

Any file can be write-protected or un write-protected on the X100 or the PC. The recorder will not overwrite write-protected files. To change the protection of a file on the X100 please see the menu section of the manual. To change the protection on the PC, right click on the file and select properties. Then tick or untick the Read-only flag of the file. Read-only (R) corresponds to Write-protected (W) in the X100 recording history menu. If a file is write-protected on the PC, and the disk is re-inserted back into the recorder, the recorder will treat it as write-protected and not overwrite it.



Right click file and select file properties



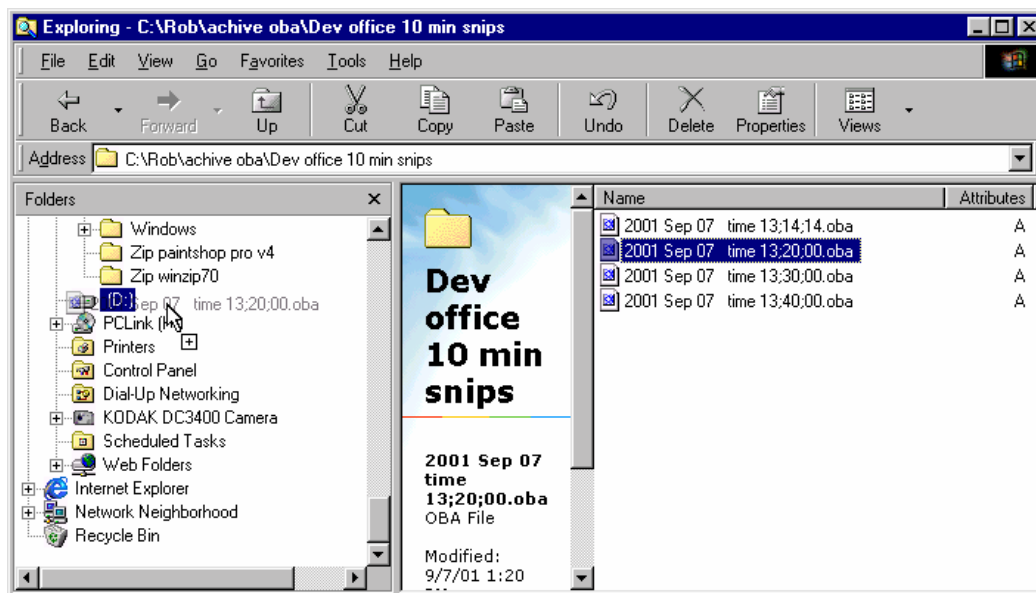
Change the read-only flag as required.

## Putting footage back onto an X100

In certain circumstances it may be necessary to put files back onto a cartridge so that they may be replayed by the X100. The following steps should be taken:

- 1 Put cartridge in an X100 and run a full reset (menu and recordings)
- 2 Connect disk via USB to PC (not forgetting to unplug and plug the USB connector as a last step in the connection for each disk). The PC should pick up the disk containing two hidden files SYSTEM and SYSTEM\_B
- 3 Run Scandisk on the drive. This corrects the free disk size (which shows full on Windows 98, ME, XP) and allows files to be copied to the disk. To run scandisk right click the disk drive letter of the cartridge (in the picture below the D: on the left hand side) then going to Properties->Tools->Check Now->Scandisk and using a Standard Test press start. Correct the single error message that appears (reported free space not correct).
- 4 Drag the source .oba file(s) into the disk as shown below.

The disk will now be playable on the X100.



Dragging a file into D: the X100 cartridge

## JPEG Compression

The JPEG standard and corresponding file extension .jpg is designed for single images. The X100 uses JPEG compression to store images but requires the storage of multiple images and also the incorporation of conditional refresh. The proprietary .oba file extension is used to encompass these additional requirements and the resultant file type is proprietary. The following summarises the .oba file format:

- 1 JPEG compression algorithm
- 2 JPEG blocks omitted as required to encompass conditional refresh
- 3 Multiple full or conditional images written back to back
- 4 Additional information such as watermark data and control information is incorporated into the protocol.

## PC Access Precautions

It is important to understand that the X100 filesystem is a subset of the PC FAT32 filesystem. The PC will access the X100 disk cartridges with no problems but the X100 will not be able to read every FAT32 filesystem written by the PC.

### Permitted on a PC

Reading the .oba files  
Modifying the write-protect status of files  
Performing disk utilities that read the disk (e.g. Scandisk but do not modify disk)

### Not Permitted on a PC

All write accesses to the disk if it is to be reused in an X100. These include:

Formatting the disk on PC  
Defragmenting the disk  
Deleting system and system\_b hidden files  
Deleting other files  
Renaming files  
Generating new files  
Creating a recycle bin on the disk

### Permitted with Caution on a PC

The process of putting files back onto the disk for playback on X100 as described in the previous section.

# Watermark

The disk is divided into files. Each file consists of a number of image sets and for each image set there is a block of attached information. A pictorial example of two files is shown below:

File 1 "28 Jan 2002 time 12:00;00.oba" containing:

```
Image set 1
Information about images set 1
Image set 2
Information about images set 2
Image set 3
Information about images set 3
.....
Image set 60
Information about images set 60
```

File 2 "28 Jan 2002 time 13:00;00.oba" containing:

```
Image set 1
Information about images set 1
Image set 2
Information about images set 2
.....
Image set 60
Information about images set 60
```

A new image set is created at the interval selected by the menu option shown below which is typically 1 minute:

**FULL UPDATE EVERY: 1 MIN**

The information block holds amongst other things a watermark for the image set.

## Watermark Definition

The X100 uses a fragile watermark. Any modification to the image data e.g. changing faces, lighting, contrast or other modifications will destroy the watermark. The image data that makes up the image set is passed through a function that generates a "magic number" or hash code from the images. The terms hash code and watermark are synonymous. A hash code is created automatically by the X100 for each image set and is stored in the information block. The hash code is a number between 0 and  $1.84 \times 10^{19}$  (i.e. 18.4 million million million) (64 bit number). The hash code can be regenerated at any time by passing the image data back through the function (i.e. in a watermark checking program). If the hash code thus obtained matches the hash code stored in the information block, the image data has not been altered or modified in any way. The watermark is "destroyed" when the hash code stored in the information block and the hash code of the data do not match.



## Accessing Watermark

When reviewing recordings made on the X100 digital video recorder, the fragile watermark can be displayed to prove the images have not been tampered with.

The hard disk cartridge is removed from the X100 digital recorder. The cartridge is connected to a PC via USB port. Proprietary software called PCLink (freely available to Police forces) is used to access the recordings (a password can be entered to prevent unauthorised access), and a menu option activates and de-activates the display of the watermark. A valid watermark is shown as a green "W", whereas an invalid watermark is displayed as a red "W" with an "X" through the symbol.

## Watermarks and PCLink Split Utility

A single archive can be extracted from a long file or multiple files using the PCLink software on a PC ("save video between markers" button). Watermarks are left intact as PCLink splits off images in minute multiples and the watermark for each minute is also copied to the new file. See above for verifying the watermarks.

## Hard Disk Cartridge

The X100 records onto a 2.5" IDE hard disk contained in a cartridge (T401-series).

The cartridge contains custom electronics. All menus and software are stored on the hard disk. Only T401-series hard disk cartridges can be used with the X100.

**The use of Hard Disk Cartridges other than those supplied by Timespace Technology will invalidate the warranty of the X100 recorder, and will constitute a breach of the X100 operating software copyright.**

**WARNING: Hard disk cartridges are sensitive to shock, vibration and humidity.**

# Thermal Design

The X100 may be operated in ambient temperatures from 5°C to 40°C. This specification applies in still air, with the X100 mounted horizontally and ambient temperature measured at 15cms above the centre of X100.

If the X100 is to be mounted in an enclosure is important that the internal temperature inside the enclosure does not exceed the specification above and any new enclosure design should be tested. A simple but effective test is to place a thermocouple inside the enclosure and one outside and measure the operating temperature difference. This difference must be deducted from the X100 40°C maximum.

## Example

Temperature outside enclosure	25°C
Temperature inside enclosure	<u>35°C</u>
Difference	10°C
Maximum inside enclosure	40°C (X100 max)
Maximum outside enclosure	30°C (40°C-10°C)

In the above example the 40°C max spec has been derated to 30°C due to the effect of the enclosure.

## Forced Ventilation Within Enclosures

It is advisable to include a fan integral to any enclosure design. The goal of the fan is to remove air heated by the X100 and replace it by air at the outside temperature. The temperature difference shown in the above example of 10°C can be reduced to a few degrees using a small fan. Two small fans are typically better than one due to failsafe. Fans do need checking periodically and can draw in large amounts of dirt and dust if air conditions are not good. Dirt and dust should be removed periodically. To reduce dirt ingress a fan may typically be run slower than rated by reducing the voltage from that specified. This can typically be done with a single resistor in series with the fan. Alternatively air filters may be used but these impede airflow and require careful system design. The X100 is limited from problems of dirt ingress as it does not incorporate a fan but instead uses an internal switch-mode power supply to reduce power consumption (and therefore heat).

Fans offer two immediate benefits:

- 1 Changing the air inside the case makes the air temperature inside the case within a few degrees to that outside.
- 2 If the airflow is channelled around the top surface of the X100 so that air is draw particularly over the two sides and the top, further thermal improvement is gained and an X100 specification of 5°C to 45°C may be used. (The difference between the surface X100 case temperature and ambient temperature is typically 5°C and this is the extra maximum benefit)

## Low Temperatures

Specific low temperature design normally goes hand in hand with providing a large thermal range. Insulating the X100 (e.g. inside an enclosure) and leaving it powered up (but not necessarily recording) will allow it to be used at sub zero temperatures. The insulation works against the user as the outside temperature rises above 10°C. To offer the best performance in low and high temperature environmental conditions, an insulated case can be used with a fan, which is thermostatically controlled to switch on when the temperature rises above 10°C. Better still, the fan speed can be ramped up and slowed down based of a thermal feedback circuit (analogue thermostat).

# THE MENU SYSTEM

The menu system is used to configure the X100 and gives control over recording resolution, camera sequencing, timer settings and alarm triggering and alarm triggered recording. There is also access to monitor options and password functions along with many other parameters.

A menu can contain the following types of entry:

- Sub-menu heading - press the right arrow menu key and the sub-menu is entered.
- Function - press the right arrow menu key and the function is performed (e.g. Reset System).
- Selection - press the left and right menu keys to cycle through the choices.
- Numeric item - input numbers 0 to 9 on the keypad (e.g. entering a time) and use the DEL button to correct mistakes.

Any changes made to the menu system have immediate effect on the operation of the system. Any changes to a menu are stored after 3 seconds of no keys being pressed. The menu is stored on the hard disk. To revert to the factory settings run a RESET MENU TO THE FACTORY DEFAULT STATE function in the RESET SYSTEM menu.

All the menus listed are shown in their factory default state.

## Help Screens

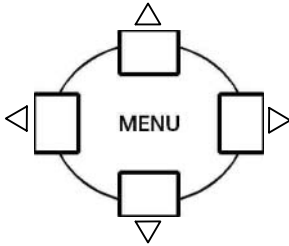
Every menu apart from the *Statistics Menu*, and every item within the menu has a separate help screen. Place the cursor against the chosen item and press the HELP key. Cycle through the pages of the help screens by using the right arrow menu key.

## Default Settings

Factory default settings are used in the illustrations in the following section.

## Menu Navigation

The menu system on the X100 can be accessed by using the X101 reviewer. Connect the dedicated 8 way (Ethernet style) cable (supplied with X101) to the recorder and consult the instructions for X101 Reviewer.



Press any of the 4 menu buttons to enter the main menu. Once in the menu system, their function is as follows:

- △ Move up to the next menu item. If the pointer is currently at the top of the menu, pressing the up button will exit the menu.
- ▽ Move down to the next menu item. If the pointer is currently at the bottom of the menu, pressing the down button will exit the menu.
- ◁ If the pointer is currently at a menu selection (e.g. **RESOLUTION: > HIGH**), pressing the left button will cycle the value backwards, (e.g. to **RESOLUTION: > MEDIUM**),
- ▷ If the pointer is currently at a menu selection (e.g. **RESOLUTION: > LOW**), pressing the right button will cycle the value forwards, (e.g. to **RESOLUTION: > MEDIUM**).  
If the pointer is currently at a sub-menu title (e.g. **> OTHER OPTIONS**), pressing the right button will enter this sub-menu.

If the left and right menu keys have no effect, then numerical entry using keys 0 to 9 is required. The **DELETE** key can be used to delete numerical entries.

If the zoom function (note: monochrome zoom only) is active, the up, down, left and right buttons pan around the enlarged image. The default position of the pointer is show on the menu by the arrow character ">".

## Main Menu

```
MAIN MENU
-----
> NORMAL RECORDING
  TIMER RECORDING
  ALARM RECORDING
  RECORDING HISTORY
  ALARM INPUT
  ALARM OUTPUT
  VIDEO SWITCHER
  OTHER MENUS

EXIT
```

Further sub-menus can be accessed here:

- **NORMAL RECORDING** - default recording set-up activated by the record on/off button.
- **TIMER RECORDING** - recording set-up activated by the inbuilt weekly interval timer.
- **ALARM RECORDING** - recording set-up activated by the alarm inputs.
- **RECORDING HISTORY** - lists the files stored on the hard disk and allows a jump to the file in question. The write-protection (i.e. protection from deletion due to the disk looping round) of any file can also be set or reset.
- **ALARM INPUT** - sets the normally open / closed / inactive conditions for each of the 4 alarm inputs
- **ALARM OUTPUT** - governs the operation of the alarm output relay.
- **VIDEO SWITCHER** - allows the dwell times of the video switcher to be controlled.
- **OTHER MENUS** - leads to the other menu items.

Use the up / down buttons to select a sub-menu and the right button to enter a sub-menu.

## Normal Recording Menu

```
NORMAL RECORDING
-----
INTERVAL:    >MAX RATE
RESOLUTION:  HIGH
FORMAT:      COND. REFRESH
FULL UPDATE EVERY:  1 MIN
ORDER:       1

EXIT
```

There are three recording modes:

- **Normal Recording** - This is triggered by pressing the  record button or is switched on after timer recording (see timer menu).
- **Timer Recording** - This is active during or outside the working hour times of the inbuilt timer.
- **Alarm Recording** - This is triggered by making / breaking a circuit across the Alarm In terminals.

Write-protection and 10minute/1 hour/1day file size selection is described in the file system menu. These are further options for normal recording.

The following details the Normal Recording menu options:

- **INTERVAL** - This can be specified in one of three ways:
  - 12, 24, 48, 72, 168, 480, 960 HOUR** - This sets the number of hours the unit will record for. The X100 automatically loops round and will have the most recent recordings available for view (it deletes the oldest first). The previous 1 / 5 / 10 minutes recording are used to estimate an appropriate update rate (selectable in the advanced options menu). The update rate depends on the file size of the recorded images. If each image only takes up a small fraction of the disk space, more images per second can be recorded for a given total recording interval. Image file size depends on the composition of the scene being recorded as well as the amount of motion in a scene (if conditional refresh is selected). The algorithm used ensures that typically 100% to 140% of the number of hours specified is available at any one time. If the record timer is used then the hours specified refers to the total recorded hours: e.g. if the timer is set up to only record for 1/2 of the week, a 168 hour setting will give 168 hours recording, spread over the previous two weeks.

Allow at least 10 minutes for the recording rate to settle once an hour mode has been selected. The statistics page shows the actual update rate and bytes per minute for user verification.

**MAX RATE, 1/5, 1/4, 1/3, 1/2, 1, 2, 5, 10, 20, 30, 60 SECS** - This specifies the time interval between image captures from each camera in the ORDER list. Choose MAX RATE to record at maximum update rate. With this form of specification the unit has a fixed update rate, but a variable total recording time (dependant on image file size).

**7 / 14 / 21 / 28 / 35 / 42 CAL. DAYS** - This specifies the record time as a period of calendar days. The X100 will record for a fixed calendar period and "make the most" of this period. These settings are useful if the amount of recording time over a period is not known or variable. A user for example may want to record for 28 days but the X100 may only be actively recording for between 4 and 20 days over this period. Further details are given in the Advanced menu section.

- **RESOLUTION** - This can be set to:  
**LOW** - This sets the highest compression level - images recorded with visible blocking artefacts.  
**MEDIUM** - This sets the medium compression level - images with little loss of quality, adequate for most applications.  
**HIGH** - This sets the lowest compression level - high quality images with good reproduction.

The actual size, in pixels, of a recorded images is 624(h) × 280(v) PAL and 624(h) x 240 (v) NTSC (non square pixels) regardless of the RESOLUTION setting. See overleaf for approximate file sizes.

- **FORMAT** - This can be set to:  
**COND. REFRESH** - In this mode, the recorder only saves the areas of the image that change due to motion from image to image (conditional refresh). The rest of the image can be restored from previous frames. This can help to reduce image file size and therefore increase recording times especially in static or low-motion scenes (such as car parks, offices etc.). Conditional refresh format is the preferred choice for normal recording.  
**FULL UPDATE** - In this mode, each image is saved as a full compressed image.

- **FULL UPDATE EVERY: 10/20/30 SECS, 1 MIN**

This line only appears if conditional refresh format is selected. Conditional refresh format only stores image changes, but a full image is required at intervals on the recorded cameras. This full image is sometimes referred to as a keyframe. All playback starts from a keyframe as the first reference point. Also the fast forward / rewind operations only play back keyframes. The pros and cons of selecting short / long keyframe intervals are as follows:

**10 seconds:** Easy to find footage in wind or rewind because start points exist every minute BUT expensive on disk space as full images may take up to 10 x the equivalent hard disk space of conditional refresh images. This is especially significant in 168 / 480 / 960 hour modes.

**1 minute:** Slightly more difficult to find footage because start points every 1 minutes, BUT efficient on disk usage as full images are infrequent.

The keyframe rate defaults to 1 minute

- **ORDER** - This determines the order in which images are grabbed from the cameras. During recording the LEDs on the reviewer indicate the camera sequence to the operator. Use the buttons numbered 1-8 to include cameras, and the **DELETE** button to remove them from the list.



## Recording time, disk size and recording rate

The following table allows the calculation of recording time in days and other parameters shown in bold below. Basically fill in 4 out of the 5 entries A to E and find the missing entry.

Number of cameras	A _____
Number of images / sec for each camera	B _____
Conditional Refresh percentage screen update	
Enter 100 Full Format	
Enter 50 High Motion (Cond. Refresh)	
Enter 20 Bus market (Cond. Refresh)	
Enter 10 Low motion (Cond. Refresh)	C _____
Disk size in Gbytes	D _____
Amount of time in days	E _____

Assumption 50k per full image (i.e. high resolution setting).

<b>Amount of time in days</b>	<b><math>E = (23.2 \times D) / (A \times B \times C)</math></b>
<b>Disk size if you know the time</b>	<b><math>D = A \times B \times C \times E \times 0.0432</math></b>
<b>How much % motion</b>	<b><math>C = (23.2 \times D) / (A \times B \times E)</math></b>
<b>No of images on disk</b>	<b><math>(2,000,000 \times D) / C</math></b>

## Timer Recording Menu

```
TIMER RECORDING
-----
>DISABLED
INTERVAL:    48 HOUR
RESOLUTION:  HIGH
FORMAT:      COND. REFRESH
FULL UPDATE EVERY:  1 MIN
ORDER:       1234

WHEN TIMER STOPS:
  STOP RECORDING
  JUMP TO TIMER MENU
```

The timer recording menu applies when recording is activated during or outside working hours.

Write-protection and 10minute/1 hour/1day file size selection is described in the file system menu. These are further options for timer recording.

Menu options are summarised below:

- **DISABLED / DURING WORKING HOURS / OUTSIDE WORKING HOURS** - By default, timer recording is disabled. Press the right menu key to select timer recording to operate either during working hours or outside working hours. These hours are specified in the Timer menu which can be entered by the **JUMP TO TIMER MENU** line.
- **INTERVAL / RESOLUTION / FORMAT / FULL UPDATE EVERY / ORDER** - These settings are the same as described in the normal recording menu, except they apply only during timer recording.
- **WHEN TIMER STOPS: STOP RECORDING / DO NORMAL RECORDING**  
At the end of a period of timer recording the X100 can either stop recording until the next period or else switch to Normal recording. For example cameras 1,2 and 3 could be recorded normally but only cameras 1 and 2 during working hours - for this have:  
  
ORDER: 123 in the normal recording menu,  
ORDER: 12 in the timer recording menu, and select DURING WORKING HOURS recording plus WHEN TIMER STOPS: DO NORMAL RECORDING.
- **JUMP TO TIMER MENU** - jump to the menu with the timer on/off times for Monday to Sunday. This is menu is described on the next page.

## Timer Menu

```
TIMER
-----
DEFINE WORKING HOURS...

MON: >09:00 TO 17:00
TUE: 09:00 TO 17:00
WED: 09:00 TO 17:00
THU: 09:00 TO 17:00
FRI: 09:00 TO 17:00
SAT: 09:00 TO 17:00
SUN: 09:00 TO 17:00

EXIT
```

The period of timer recording is set in the timer menu. Alarm recording can also be enabled and disabled between these times.

Use the up / down buttons to choose a day, and the right / left buttons to switch between start and finish times. Enter a time using the numbered buttons - this will replace the previous time. To engage the timer, go to the "Timer Recording" menu.

You must use leading zeros for the time where necessary, e.g. 09:45.

To omit any day, leave both entries blank with NO numeric characters.

The example below shows how the X100 can be made to record from 9am Monday through to 9am Friday. Note that many of the fields have been left intentionally blank.

```
MON: 09:00 TO :
TUE: 00:00 TO :
WED: 00:00 TO :
THU: 00:00 TO :
FRI: 00:00 TO 09:00
SAT: : :
SUN: : :
```

## Alarm Recording Menu

```
ALARM RECORDING
-----
>DISABLED
INTERVAL:      MAX RATE
RESOLUTION:    HIGH
FORMAT:        FULL UPDATE

ORDER: 1234
USE ORDER ABOVE
TRIGGER:
  SEE ALARM INPUTS MENU

POST-TRIG RECORD: OFF
```

The alarm recording menu applies when recording is triggered by the alarm-in relay inputs. There is 1 alarm input for each of cameras 1 to 4.

Write-protection and Event/10minute/1 hour/1day file size selection is described in the file system menu. These are further options for timer recording. By default alarm recordings are write-protected (see file system menu).

Menu options are summarised below:

- **DISABLED / DURING WORKING HOURS / OUTSIDE WORKING HOURS / ENABLED AT ALL TIMES -**  
Alarm recording is disabled by default. It can be enabled during or outside the times specified in the timer menu (see previous page) or enabled at all times.
- **INTERVAL / RESOLUTION / FORMAT / FULL UPDATE EVERY / ORDER -** These settings are the same as described in the normal recording menu, except they apply only during alarm recording.
- **USE ORDER ABOVE -** When any of the alarm inputs are active the X100 records using the camera order given above. Other options are:  
**ONLY ALARMED CAMERAS -** Which means that only alarmed cameras will be recorded.  
**PRIORITISE ALARMED CAMERAS -** The basic camera order used is taken from the normal recording menu. Alarmed cameras are recorded along with these other cameras but given priority. For example if the Normal Recording order is 1234 an alarm event on camera 1 will activate recording in the order 121314 121314 e.t.c. Camera 1 is effectively prioritised over the other cameras.
- **TRIGGER: SEE ALARM INPUTS MENU -** alarm recording is triggered by the alarm inputs. An automatic jump can be made to the alarm inputs menu from this line.
- **POST-TRIG RECORD: OFF/5/10/20/30/45 SECS.  
1/2/5/10/20/30/45/60/120 MINS.**  
This specifies how long to carry on alarm recording on any given camera after an alarm has finished. The post-trigger time is used for all cameras and it is not possible to set different times for different cameras.

All alarm recordings are marked with the character A (Alarm) embedded into the recording and a log is placed in the recording history list.

When the alarm event occurs, the unit will begin recording as specified by the Alarm Recording Menu. After the post-trigger time has elapsed, the unit will return to normal / timer recording if it had been recording before the alarm event, or else it will stop recording.

If another alarm event occurs during an alarm recording the recording period is extended and the whole period is classed as one event.

## Recording History (Files) Menu

```
RECORDING HISTORY (FILES)
-----
A = Alarm event
W = Write protected
W A 22:07:54 09/08/01
W A 22:05:23 09/08/01
    22:30:00 09/08/01
W   22:20:00 09/08/01
    22:10:00 09/08/01
    22:00:00 09/08/01
    >21:50:00 09/08/01

DEL to change W, ^ to exit
```

The recording history menu lists the files that are recorded on disk (up to 10,000 files supported), allows the user to write-protect or unwrite-protect any file and provides instant jump to any file.

### File Listing

The file listing shows any alarm event files (marked with "A" for alarm) most recent first, followed by all normal and timer recording files also most recent first. In the above menu example there are 5 normal recording files at 10 minute intervals and 2 alarm event files. Nine files can be shown on one page and by scrolling up and down further pages of files are made visible.

### Voluntary Write-Protection

Any file can be write-protected to avoid it being erased on loop recording. For example there may be some critical footage that needs to be kept but the user may want to continue recording on the same disk once he has protected this file. To write protect any file press the DEL key and "W" appears next to the file showing that it is protected. Write-protection can be removed by pressing the DEL key again. In the above example the file 22:20:00 has been voluntarily write-protected. Pressing DEL again removes write-protection (DEL toggles the write protect status). Write-protected files appear as write-protected (read only) on the PC. You can change the write-protect status either on the PC or as explained on the X100. Any files that are not write-protected on the X100 get overwritten (oldest first) during the process of recording. The percentage of write-protected recordings on disk is given in the statistics menu.

### Jump to File

Press the right menu button to jump to the start of the file indicated by the arrow cursor.

The DELETE ALL RECORDINGS ON DISK option in the reset menu can be used to delete all files in one operation.

## Alarm Input Menu

```
ALARM IN
-----
TRIGGER ALARM RECORDING
AND/OR VIDEO SWITCHER
WHEN ALARM IN    REC  TRIG
1 >IGNORED
2  IGNORED
3  IGNORED
4  IGNORED

EXIT
```

The alarm input menu sets the normally open/closed relay state for each of the alarm inputs. Alarm inputs 1 to 4 control cameras 1 to 4 respectively. Cameras 5 to 8 do not have alarm inputs.

Each of the alarm inputs can be set to operate as follows:

- **IGNORED**  
The alarm input is ignored
- **GOES CLOSED**  
An alarm input trigger is generated on the instant that the alarm input goes closed. The post-trigger record time governs the duration of recording.
- **CLOSED**  
An alarm input trigger is maintained for the duration of the closed contact. Alarm recording operates throughout the closed state and for the post-trigger time once the contact is opened.
- **GOES OPEN**  
An alarm input trigger is generated on the instant that the alarm input goes open. The post-trigger record time governs the duration of recording.
- **OPEN**  
An alarm input trigger is maintained for the duration of the open contact. Alarm recording operates throughout the open state and for the post-trigger time once the contact is closed.

The column **TRIG** indicates the current status of the alarm inputs. For **CLOSED** and **OPEN** selections the **T** indicates an active state on the alarm input. For **GOES CLOSED** and **GOES OPEN** selections the **T** only briefly flashes as the alarm trigger is only momentary.

The column **REC** indicates the current status of the alarm inputs (**TRIG** column) extended by the post trigger time specified in the alarm recording menu. If alarm recording is enabled an **R** character in this column indicates that this camera is currently recording. If alarm recording is disabled the alarm inputs may still be used for video switching and the **R** character shows what is being fed to the video switcher section. The control of the video switcher using alarm inputs, is an option in the video switcher menu.

## Alarm Output Menu

```
ALARM OUTPUT
-----
ALARM OUTPUT: >CLOSED

WHEN...
CAMERA DISCONNECTED: NO
HARD DISK 90% WRITE PROT
RECORDING: NO
ALARM INPUT ACTIVE: NO
ALARM OCCURRED: NO

EXIT
```

The alarm output menu controls the alarm output relay.

- **ALARM OUTPUT** - This can be set to:
  - **CLOSED** - The circuit across the Alarm Out terminals will be closed if any of the conditions set to **YES** on this menu occur, and open otherwise.
  - **OPEN** - The circuit across the Alarm Out terminals will be open if any of the conditions set to **YES** occur, and closed otherwise. The alarm input must be held active for a minimum of 0.6 second to ensure valid triggering. When the alarm is active a message is displayed on the main screen indicating the alarm source. Press any key to delete the message.
  - **CAMERA DISCONNECTED** - If set to **YES**, the alarm output is activated when a camera is disconnected from the unit during recording. The unit has to be recording on a disconnected camera to generate this alarm. A blank screen is recorded with a camera disconnected message into the footage so that on playback the user is reminded that the camera had been disconnected at the time specified. 5 seconds after the camera is reconnected the alarm will cease. The message still needs to be cleared by pressing any key.
  - **HARD DISK 70% / 80% / 90% / 95% / 100% WRITE PROTECTED / DONT CARE** - The alarm output goes active if the hard disk is a certain percentage or more full up with write protected events. At 100% write protected the unit will not record. The alarm can be used to detect an impending fully write protected state and warn the user. If write protection is not used then the unit just does loop recording. This is the default configuration and in this case the % write protected alarm will never happen. If you do not want to be informed via alarm of a full up condition then select **DONT CARE**.
  - **RECORDING** - If set to **YES**, the alarm output is activated when any recording is taking place. The alarm output follows the state of the record LED. This setting could be used to switch on cameras during timer recording - an external power relay would be required.
  - **ALARM INPUT ACTIVE** - If set to **YES**, the alarm output is activated when any of the 4 Alarm In terminals are active. For example if alarm inputs are set in the Alarm input menu to an active **CLOSED** condition and the alarm output is active **CLOSED**, then if any of the alarm inputs go closed the alarm output will be closed. If all alarm outputs are open then the alarm output will be open (in this example).
  - **ALARM OCCURRED** - If set to **YES**, the alarm output is activated if an alarm event has occurred. A battery and bell may be connected to the alarm out relay so the user is informed if any alarm has occurred. The alarm condition is cleared when the user enters the recording history menu.



## Video Switcher Menu

```
VIDEO SWITCHER
-----
CAMERA   DWELL TIME (SECS)
1:       >2
2:       2
3:       2
4:       2
5:       SKIP
6:       SKIP
7:       SKIP
8:       SKIP
SHOW ALARMED CAMERAS:>NO
EXIT
```

The video switcher menu controls the automatic switching of cameras when the unit is in AUTO mode.

The dwell time specifies the duration spent on a camera before switching to the next camera. Use the up / down buttons to choose the camera, and the right / left buttons to increase / decrease the dwell time. The dwell time for a camera can be set to SKIP, so the camera is ignored (this may be done if fewer than the maximum number of cameras are connected). A dwell time of 2, 5, 10, 20 or 30 seconds is selectable.

If **SHOW ALARMED CAMERAS: > YES** is selected and an alarm is active then the video switcher ignores the timing entries in the above menu and instead displays the view of the alarmed camera. If more than one alarm inputs are active at the same time, the lowest alarm number and corresponding camera is displayed. If no alarms are active then conventional video switching, as described above, is performed. Other parameters that affect the SHOW ALARMED CAMERAS feature are the post-trigger time in the alarm recording menu (this extends the length of time the alarmed camera is displayed after the alarm), and the alarm inputs which need to be set to typically OPEN or CLOSED active states in the alarm inputs menu. Note also that it is not necessary to enable the alarm recording to use SHOW ALARMED CAMERAS. In software version V1.5 there is an instantaneous switch on alarm input change.

## Other Menus

```
OTHER MENU
-----
> PASSWORD
MONITOR
DATE
STATISTICS
ADVANCED
FILE SYSTEM
RESET SYSTEM

EXIT
```

The "other menus" menu provides access to further menus:

- **PASSWORD** - Password protection set-up.
- **MONITOR** – Timestamp options and camera text.
- **DATE** - Change the system time and date plus summer time correction.
- **STATISTICS** - General recording statistics.
- **ADVANCED** - Advanced options.
- **FILE SYSTEM** - File organisation and file health check.
- **RESET SYSTEM** – Reset recordings. Reset menu to factory default state.

## Password Menu

```
PASSWORD
-----
PASSWORD PROTECTION FOR:
MENU:      >NO
RECORDING: NO
PLAYBACK:  NO
SWITCHER:  NO
MODEM:     NO

CHANGE PASSWORD
EXIT
```

The password menu restricts user access to the four key parts of the system. Here is a summary of the menu selections available:

- **MENU** - If set to **YES**, access to the menu system is password protected.
- **RECORDING** - If set to **YES**, the record button is password protected.
- **PLAYBACK** - If set to **YES**, the controls to review recorded footage are password protected. The zoom function is also password protected.
- **SWITCHER** - If set to **YES**, the button to activate auto switcher mode is password protected.
- **MODEM** - If set to **YES**, then any GSM modem access is password protected.

If the user tries to access a protected function, he is asked to type in the password. The default password is 0000 when shipped. On correct password entry (four digits e.g. 3524 or 8912) the password protection is temporarily disabled. It is reinstated after 1 minute of no key presses. Protection is also automatically reinstated when leaving the password menu.

- **CHANGE PASSWORD** - The supervisor who knows the password is requested to type in the old password, followed by the new one. He is then requested to retype the new password. If he has done this successfully the new password is made the current one and the password protection is activated.

## Hints

It is intended in a password protected system to at least protect the menu system. This ensures that important operating settings cannot be tampered with. Other protection may be required e.g. the record on / off button may be disabled. Some examples are given overleaf.

## Examples

Selection	Set to		
<b>MENU</b>	<b>YES</b>	<b>YES</b>	<b>YES</b>
<b>RECORDING</b>	<b>YES</b>	<b>YES</b>	<b>NO</b>
<b>PLAYBACK</b>	<b>YES</b>	<b>NO</b>	<b>NO</b>
<b>SWITCHER</b>	<b>YES</b>	<b>NO</b>	<b>NO</b>
Result:	Full protection - no functions available.	Allow the user to review footage and look at live cameras only.	Allow the user to carry out basic functions, but without access to any menus.

The password for the unit when the unit is shipped is 0000. This may be changed as described previously.

In the event of complete password lockout contact your installer / distributor for a code for the X101 reviewer. The user can enter a code on the X101 reviewer which will enable him to reset the unit and reset the password.

## Monitor Menu

```
MONITOR
-----
TIMESTAMP:    >YES

TIMESTAMP
POSITION:    BOTTOM-LOW

CAMERA TEXT

EXIT
```

The Monitor menu governs the timestamp and optional camera text. Please note that the timestamp and camera text are buried into the image and CANNOT be removed in any way after recording. Changing monitor parameters retrospectively will have no effect on the timestamp or camera text of old recordings.

- **TIMESTAMP** - If set to **YES** images will be stored with an embedded time / date stamp. See below for a description of the time stamp.
- **TIMESTAMP POSITION** - The position of the timestamp can be moved to either bottom - low/bottom-mid/bottom-high which are 3 positions below the main image or top-low/top-mid/top-high which are 3 positions above the main image.

A typical time stamp is shown below with camera text:

Camera Text

**JKN456Y DOOR**

**C1**

**12:00:00**

**27/07/01**

**A**

Camera  
Number

Time

Date

Alarm  
Recording

During an alarm event, an "A" will appear at the end of the time stamp. The camera number indicates which camera grabbed the image, and the time and date indicate when the image was grabbed.

- **CAMERA TEXT** - voluntary text for each camera can be entered. The text appears above the timestamp. Details are given overleaf.

## Camera Text

```
          CAMERA TEXT
          -----
1>JKN456Y DOOR
2 JKN456Y REAR
3 JKN456Y FRONT
4 JKN456Y DECK1A
5 JKN456Y DECK1B
6 JKN456Y DECK2A
7 JKN456Y DECK2B
8 JKN456Y
  DUPLICATE TEXT FROM 1)
  EXIT
```

Allows up to 25 optional digits of text per camera. For instance vehicle registration number, branch name, location in building etc., can be displayed on recordings, in addition to the timestamp.

This menu is entered from the **OTHER MENUS -> MONITOR MENU**. Camera text can be entered for each camera. Use the menu arrow keys to move the cursor around the page and the number keys to enter numbers or text. Lower numbers (1, 2..) do the lower letters and higher numbers (.8,9) do the higher letters. More specifically the number keys map to numbers / characters in the following way:

Key	Number/Characters
1	A B C 1 (space)
2	D E F 2 (space)
3	G H I 3 (space)
4	J K L 4 (space)
5	M N O 5 (space)
6	P Q R 6 (space)
7	S T U 7 (space)
8	V W X 8 (space)
9	Y Z " 9 (space)
0	. ? @ 0 (space)

Keep pressing keys 0 to 9 until the desired character appears. For example pressing key '1' gives the 'A' character, pressing again, the 'B' character, again the 'C' character, again the '1' character and finally the SPACE character. The sequence repeats. The camera text will appear above the time stamp on each image. Like the time stamp it is embedded into each image and cannot be removed from the image.

Use the **DUPLICATE TEXT FROM 1)** function to copy text for camera 1 into text for cameras 2 to 8. This avoids repeat typing of vehicle registration numbers or other common text. To produce the example above the registration was typed into line 1). This was then duplicated into lines 2 to 8. Then camera specific text was added.

## Current Date Menu

```

CURRENT DATE
-----
TIME: >12:24:00
DATE: 01/12/98
      (DAY/MONTH/YEAR)
DAY:  MONDAY
SET THE DATE

SUMMER TIME ADJUST:  ON
COUNTRY:  UK

EXIT
```

The current date menu sets up the date time and seasonal correction.

- **TIME** - Type a time using the numbered keys. Invalid times are prohibited
- **DATE** - Type a date using the numbered keys. Invalid dates are prohibited
- **DAY** - Select a day using the left / right keys.
- **SET THE DATE** - Press the right key to set the time, date and day as entered above.

You must use leading zeros for the time and date where necessary, e.g. 09:45 and 04/07/98. The unit is shipped from the factory with date and time set to GMT (UCT).

- **SUMMER TIME ADJUST** - Set this ON if you would like the unit to automatically correct for daylight saving time.
- **COUNTRY** - the current selections are **UK / CENTRAL EUROPE / USA**
  - UK - At 1:00 am on the last Sunday in March the clock is put forward 1 hour (summer time)  
At 2:00 am on the last Sunday in October the clock is put back 1 hour
  - EU - At 2:00 am on the last Sunday in March the clock is put forward 1 hour (summer time)  
At 3:00 am on the last Sunday in October the clock is put back 1 hour
  - USA- At 2:00 am on the first Sunday in April the clock is put forward 1 hour (summer time)  
At 3:00 am on the last Sunday in October the clock is put back 1 hour

Summer Time Adjust is automatically applied even if the unit is switched off during the time at which the clocks go forwards or backwards. In the latter case correction is applied on power-up. A message is displayed indicating to the user that the time has been modified.

## Statistics Menu

```
          STATISTICS
          -----
OPERATING SYSTEM V1.4

HARD DISK:
29.92 SIZE IN GIGABYTES
 1 % WRITE PROTECTED
 3 % USED
RECORDING:
2077 KBYTES/MIN
 295 IMAGES/MIN
 7.04 KBYTES/IMAGE AVE.
                                #090000
```

The statistics page gives the operating system version number, disk size and percentage used and percentage write-protected. Recording statistics are updated every minute and are intended to be used for monitoring a camera system and to provide an indication of the capacity of the X100 in different recording environments.

The KBYTES/MIN entry indicates how many thousand bytes have been recorded in the most recent minute

The number of images recorded in the last minute is indicated.

The KBYTES/IMAGE is produced by dividing KBYTES/MIN by IMAGES/MIN.

The number following the # character on the bottom of the statistics menu is the engineering code of the unit and is held on the X100 itself.

### Engineering Code Spec

The six engineering code digits are:

hardware version digit 1

hardware version digit 2

NTSC flag

Serial Address (modem port only) (ignored in V1.4 and above: serial address = 0)

Language (English 0, American 1)

Serial Rate (ignored in V1.4 and above - fixed at 115200)(0=115200, 1=1200,...4=9600...).

No help screen for the Statistics Menu is provided on the X100 recorder.



## Advanced Menu

```
ADVANCED
-----

>PUSHBUTTON SWITCHES
  UNIT OFF
  RECORDING RATE BASED ON
  PREVIOUS: 10 MINS
  USE REC. STATE AT PWR OFF
  SHOW IMAGE INFO: NO

  DISABLE ALARM MESSAGES YES

  RESET CALENDAR RECORDING
  D      % T      % F
```

The advanced menu provides control over more sophisticated X100 functions:

### Low Power Standby Mode

- **NOTHING SWITCHES UNIT OFF /  
PUSHBUTTON SWITCHES UNIT OFF /  
NOT RECORDING SWITCHES UNIT OFF /  
ALARM INPUT 4 SWITCHES UNIT OFF**

The above settings control the way the unit can switch to low power standby mode.

The first setting disables the pushbutton switch on the front of the X100. The unit will never go into low power mode.

The second setting enables the pushbutton on the front of the unit. The unit may be switched off (into low power mode) by pressing the button.

The third setting means the unit will enter low power state if it is not recording. The unit must also have had 1 minute or more of no key presses.

The fourth setting allows alarm input 4 to control the power on/off state of the unit. Set alarm input 4 to either active OPEN or active CLOSED settings in the alarm input menu.

Once in low power mode the following always powers up the unit:

- Plugging in an X101 reviewer
- Changing the state of any of the 4 alarm inputs
- Pressing the on/off button on the front of the recorder

- **24 / 48 / ... HOUR MODE RECORDING RATE BASED ON PREVIOUS...**

This controls the hour mode optimisation algorithm. Essentially when the unit is recording in an hour mode such as 48 hour mode or 168 hour mode it uses the previous n minutes of recording as an estimate for the recording rate for the next minute. The value of n is selectable.

An n of 1 minute gives a system that is very responsive - the next minute's recording rate is based on the previous 1 minute's statistics. Any short term fluctuations will cause the system to rapidly recalculate the recording rate. 1 minute should be selected for systems that require no less than the number of hours specified by the hour mode.

Choosing an n of 1 hour gives a system that smoothly adjusts its update rate based on the previous hour. This avoids any short term fluctuations in rate but can in extreme cases cause less recording on disk than is specified by the hour mode. The user should select a value of n to suit the recording requirements.

If you are not using hour mode recording you need not consider this setting. The default of 10 minutes is a useful general purpose setting. Please allow 10 minutes for the unit recording rate to stabilise.

- **USE REC. STATE AT PWR OFF /  
RECORD ON POWER UP /  
DONT RECORD ON POWER UP**

The default setting USE REC. STATE AT PWR OFF means that if the unit was recording when it was switched off it will record when it is switched back on. Also if the unit wasn't recording when it was switched off it won't be recording when it is switched on. This setting is generally convenient for covert use where recording is switched on and off by pressing the record button and the unit continues the way it left off.

The RECORD ON POWER UP setting should be used if the unit is always to do normal recording on power up. This is important in vehicle applications where the user may have inadvertently switched the unit off in a non-recording state (e.g. he has just been playing back some footage and he switched off recording to make this easier). With this setting whatever the user does and however the unit is left at switch off, it will record the next time it is powered up.

The final option DON'T RECORD ON POWER UP is useful if manual adjustments need to be made to the menu settings every time the unit is switched on prior to recording. Note that the unit will not do normal recording after a loss of power e.g. in a power cut so this setting should be used with caution.

- **SHOW IMAGE INFO**

If this is selected the file size in bytes for each image or partial image (in conditional refresh format) is displayed along with the percentage of the screen that has been updated. The display is overlaid (not embedded) into each image that is played back. In full update recording the latter is always 100% whereas in conditional refresh recording the percentage may drop down to around 1% in a still scene. Note that the time is embedded in the recorded image and will provide some motion content on the screen.

- **DISABLE ALARM MESSAGES**

If no is entered then alarm messages occur on the screen when an alarm happens. The message indicates what the cause of the alarm out active condition is.

- **RESET CALENDAR RECORDING**

This is used for calendar recording (see Normal Recording Menu (Interval) and Timer Recording Menu (Interval)). Resetting calendar recording resets the calendar time period (7/14/21/28/35/42 calendar days) to start from the current point in time. A full disk of recordings will be available in 7/14/21... days time and in multiples of this time period thereafter.

EXAMPLE

If the user inspects the unit every week use 7 calendar day recording and reset calendar recording when setting up the unit (the first inspection). If inspections are made at the same time every week following on from this a full disk of footage will be available for review over the 7 day period. The **RESET CALENDAR RECORDING** function need not be done at each inspection but is advised if there is any variability in the time of inspection or if the day of inspection is changed.

Disk status under calendar recording is given at the bottom of the advanced menu with three numbers, for example:

D 40.00% T 50.00% F 1.5

D is the percentage of disk used so far in the period

T is the percentage of time used so far of the period

F is a rate factor that increases the current recording rate and gives improved performance when using calendar recording. F can be viewed as a "benefit factor".

$[F=T*(100-D)/(D*(100-T))]$

## File System Menu

```
FILE SYSTEM
-----
WRITE PROTECTION FOR:
  NORMAL RECORDING: >NO
  TIMER RECORDING:   NO
  ALARM RECORDING:  YES

FILE LENGTH FOR:
  NORMAL / TIMER
  RECORDING:        10 MINS
  ALARM RECORDING:  EVENT

CHECK FILES MENU
```

The File System menu controls how files are laid onto the disk.

- **WRITE PROTECTION FOR:**  
**NORMAL RECORDING: YES/NO**  
**TIMER RECORDING: YES/NO**  
**ALARM RECORDING: YES/NO**

The above settings indicate whether new files created during normal / timer / alarm recording will be write-protected or not. Note that it only affects file creation and is not retrospective on files that currently exist. Write-protection means that a file is protected from over-write (deletion) when the X100 loops back over the hard disk. The write-protect status of any file can be changed at any time from the recording history menu.

Examples: Normal : Timer : Alarm recording

**NO:NO:NO - standard loop recording.** No write-protection whatsoever. In any circumstance the unit will never fill up with write-protected files. Oldest recordings are deleted first.

**YES:YES:YES - single pass recording.** When the disk is full recording automatically stops. Disk status LED indicates that the disk is 100% full (help screen on recorder V1.4 software is in error here).

**NO:NO:YES – loop recording with write-protected alarms.** This is the default state. All alarm recordings are write-protected. The disk will fill up with write-protected recordings if alarm recording is done frequently and the user should check that the percentage of write-protected recordings (see statistics menu) on the unit from time to time. The recording space for normal / timer loop recording is obviously affected and say if the disk is 90% full of write-protected files then the loop recording space would reduce to 10% of the disk. The X100 will not record if it is 100% full of write-protected files, and some files will need to be un write-protected in the recording history menu and thereby deleted to free up space. You may alternatively want to erase all files in the reset system menu.

- **FILE LENGTH FOR NORMAL AND TIMER RECORDING: 10 MINS / 1 HOUR / 1 DAY**  
This controls how often new files are created. In revisions of software prior to V1.4 a new file was created typically every minute (more accurately at the FULL IMAGE EVERY rate for normal / timer / alarm recording) with has the side effect of producing large numbers of files on the hard disk when viewed on a PC. Set the file length as appropriate. The 1 day setting is useful if you are recording over say 30 days and 30 files is the easiest to manage or archive. The 10 minute setting gives more files but each is of a small size. PCLink can wind and rewind through any file at the FULL IMAGE EVERY interval (see normal / timer / alarm recording menus), so this gives a random access capability.

If a file already exists it will always be appended to if possible, so intermittent recording on a 1 day setting will always add onto a single file for that day.

- **FILE LENGTH FOR ALARM RECORDING: 10 MINS / 1 HOUR / 1 DAY / EVENT**  
This controls how often new files are created during alarm recording.

**10 MINS / 1 HOUR / 1 DAY** - this is as per normal and timer recording. Using these settings means that alarm events get grouped together in files of 10 minute / 1 hour and 1 day. This may be convenient where the user just does alarm recording only (e.g. recording people entering and exiting an office via PIR sensor). All footage is stored and replayed back-to-back and can be rapidly reviewed on a PC Link. In this case the wind and rewind keys on the X100 recorder and on the PCLink player will wind through each alarm event within the file and are a very convenient way of scanning through possibly many thousands of alarm events. This would in nearly all cases be more practical than generating 1000 separate files (see EVENT option below). Note that normal, timer and alarm recording all get put into the same files as the alarm recordings in this case. Alarm events are only differentiated from normal recordings by the "A" character buried into each image.

If one of the 10 MINS / 1 HOUR / 1 DAY settings is used for alarm file length it is advised to use the same setting for normal / timer file length.

**EVENT** – A separate file for each alarm event is created. The file name starts with the characters "ALARM" so is readily differentiated on PC review. In the recording history on the X100 the "ALARM" letters are shortened to the "A" character, but events are still separated off and appear at the bottom of the recording history. Up to 10,000 files can be created on the X100. If more events than this are anticipated then the user is advised to use the 10 MINS / 1 HOUR / 1 DAY setting described above. This is in most cases preferable as it is very difficult to deal with more than a few 1000 files on a file system. Certainly on the X100 going through 1000 files or more in the recording history menu would be a lengthy process.

More details on the V1.4 filesystem as viewed on a PC are given at the start of the V1.4 X100 manual under a section title Filesystem.

**CHECK FILES MENU** - A jump can be made to the check files menu where the file system can be checked for integrity and corrected if necessary. See the next page.

## Check Files Menu

```
          CHECK FILES
          -----
CHECK FILES NOW

CHECK FILES PLUS
  DELETE BAD FILES NOW

CHECK FILES PLUS
  DELETE BAD FILES
  AT POWERUP:   NO

(Note: This may take 5 mins)
```

- **CHECK FILES NOW**  
This is a non destructive check of the filesystem. The following tests are performed:
  - 1 All oba files are valid
  - 2 No oba files overlap
  - 3 All oba files are positioned within the disk volume.If any of the above errors are encountered the user is informed by a brief message.
- **CHECK FILES PLUS DELETE BAD FILES NOW**  
This checks the files as above but deletes any that are bad. It also rewrites the FAT area so if you are experiencing any difficulty in reading a cartridge on the PC, use this option. Also use RESET NOW in the reset menu with entries NO and NO in the options on this page. This will rewrite the boot sector and volume partition information.
- **CHECK FILES PLUS DELETE BAD FILES AT POWEUP: NO/YES**  
This performs the above when the unit is switched on (power applied to it). Note that the system may take up to 10 minutes to perform this task so ensure that you are happy that no recording is to take place within the first ten minutes after the unit is switched on.

## Reset System Menu

```
RESET SYSTEM
-----
1) DELETE ALL
   RECORDINGS ON DISK >NO

2) RESET THE MENU TO
   THE FACTORY DEFAULT
   STATE WITH...      NO
   LANGUAGE  ENGLISH

QUIT
DO THE ABOVE NOW
```

- **DELETE ALL RECORDINGS ON DISK**  
Removes all recording files including write-protected files. Set this to yes and then run DO THE ABOVE NOW. Note that there is no undo option.
- **RESET MENU TO FACTORY DEFAULT STATE WITH LANGUAGE ENGLISH/AMERICAN**  
This reset the menu to the factory default state and sets up for other languages if required. Note that if the X100 is NTSC then only AMERICAN language should be used. Set this to yes and then run DO THE ABOVE NOW. Note that there is no undo option.

### WARNING

Choosing a full reset i.e. by putting YES into 1) and 2) selections will reset the X100 to the factory shipped configuration. All menu settings will revert to factory defaults, and any recording on the hard disk (including write-protected images) will be deleted. Only the password remains unchanged. There is no undo option.

## SMS Message Menu

```
SMS MESSAGE
-----
PHONE NUMBER:
 393334774753
SMS MESSAGE:
>EMAIL FRED.BLOGGS@SOMECOM
 PANY.CO.UK
 .THIS IS THE SUBJECT OF
 THE EMAIL SENT BY X100
 .VEHICLE ABC929W
 HEALTH CHECK PASSED

SEND: NEVER
```

The SMS Message menu in V1.51m of the X100 software allows the user to configure the X100 to send a SMS text message during its power-up sequence when using the Siemens TC35 GSM modem terminal. This feature requires the same hardware as when using the RemoteLink software in order to remotely operate the X100.

Please refer to the chapter RemoteLink V1.1.2 in this manual for a description of the necessary hardware and instructions on how to install and configure the GSM modem and SIM card.

Most SIM cards as used in the GSM modem terminal require that a outgoing chargeable event such as sending a text message takes place every 3-6 months in order for the card to remain active. The X100 is able to perform this activity automatically at a user defined interval.

Please note however that this will require the use of a SIM card which has enough credit available to send the outgoing SMS text message at the intervals determined in the menu.

- **PHONE NUMBER**

This field is used to determine the number of the mobile phone or gateway that the message is to be sent to. Use the X101/201 reviewer to input the number using the keys numbered 0-9 on the keypad. Use the 'Delete' key on the X101 ('AUTO' on the X201) to remove the last digit typed.

The X100 will automatically insert '00' before any number that is entered so it is necessary to use the two digit country code of the mobile phone or gateway that is to be used. For example a UK phone number 07949xxxxxx would be entered as '447949xxxxxx'.

- **SMS MESSAGE**

This is the main body of text to be sent as an SMS text message.

Use the numbered keys on the X101/201 reviewer to cycle through the available characters for that key and the left & right 'MENU' arrow keys to move the highlighted cursor to the previous or next character respectively. Please note that the right arrow key is used to move to the next character to be entered, otherwise pressing the numbered keys will overwrite the currently highlighted character. Use the up and down 'MENU' arrow keys to move to the previous or next line of text.



Each of the numbered keys have 4 characters attached to them. The fifth character on each key is a blank space; use this to delete any unwanted characters. Pressing the 'Delete' key on the X101 keypad ('AUTO' on the X201) will delete the entire current line of text.

The number keys map to numbers / characters in the following way:

Key	Number/Characters
1	A B C 1 (space)
2	D E F 2 (space)
3	G H I 3 (space)
4	J K L 4 (space)
5	M N O 5 (space)
6	P Q R 6 (space)
7	S T U 7 (space)
8	V W X 8 (space)
9	Y Z " 9 (space)
0	. ? @ 0 (space)

There are six lines in total containing 25 characters on each line in which to type a message.

If a line of text ends with a space then the X100 will automatically insert a space in the message before the next line of text and remove any spaces at the end of the previous line. If however the line ends with a character then the X100 will not insert a space and the text will run continuously from one line to the next. Therefore if a word runs from the end of one line to the beginning of the next then it will be displayed correctly in the text message with no spaces contained within it.

- **SEND**

There are 5 options used to determine how often the X100 sends the SMS text message on power-up. The message is sent during the X100's power-up sequence and therefore requires the unit to power down and up in order to send the message. If the X100 is continuously powered up then it will not be able to send the message.

'NEVER' (default)

The X100 will never send the text message on power-up.

'MONTHLY'

The X100 will send the message once a month on power-up.

'1<sup>st</sup> 10 20 30<sup>th</sup> OF MON'

The X100 will send the message on the next power-up after each of these dates.

'DAILY'

The X100 will send the message once a day on power-up.

'ON POWER ON'

The X100 will send the message every time on power-up.

Please note that when the X100 is sending the message during its power-up sequence it will 'lock' for approximately 15 seconds after its normal sequence before becoming operational as usual.

## **Sending emails via a gateway**

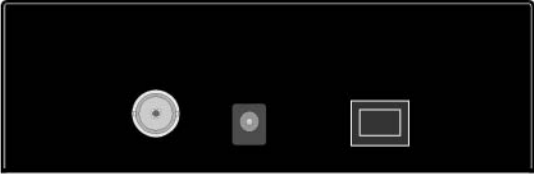
There are a number of companies which provide so called 'gateways' which can be used to convert an SMS text message into an email. These can be used to send a message from the X100 to an email address instead of a mobile phone.

It is usual that the message entered into the 'SMS MESSAGE' section of the menu will have to use specific syntax in order for the gateway to recognise it. Instructions for the format of the message required can usually be found on the website of the gateway concerned along with the telephone number to which it must be sent.

It is essential that the syntax of the message is correct otherwise the email may not be sent. Timespace Technology cannot offer any specific advice when making use of one of the gateways available. Please direct any enquiries to the gateway company concerned.

# X101 REVIEWER

Adjustment for  
 Brightness ->  
 Contrast ->  
 Colour ->



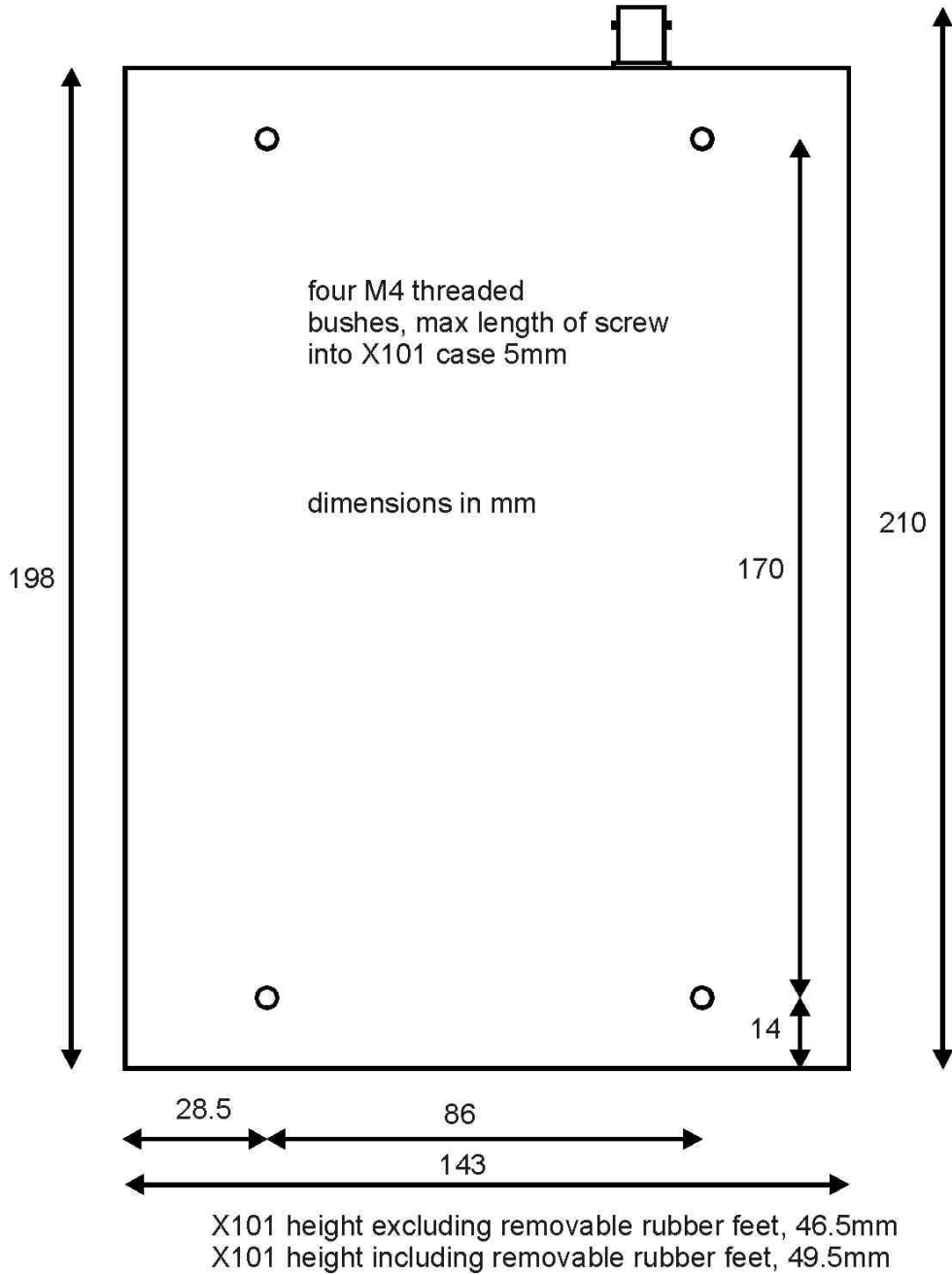
Top View

Video in	Power in
Self Contained Camera Tester	

To X100

# Mounting Diagram

X101 fixing specification



# Operation

The X101 is used to program the menu settings on X100, to check camera views and to review recordings on the installed hard disk cartridge.

Connect Data Link Cable (supplied with X101 Reviewer) from socket marked "Reviewer" on X100 to socket marked "To Recorder" on X101. This connection provides power and video from X100 to X101.

When power (12V  $\pm$ 1.2V) is applied to the X100 the LED on the rear panel of the reviewer is illuminated.

The X100 display will be shown on the X101 monitor.

Press the buttons on the X101 to control the X100.

**WARNING: When X101 is connected to X100 the power supplied to the X100 must be 12V $\pm$ 1.2V. An additional PSU can be connected to "Power In" socket of X101, but to view X100 a BNC cable must be linked from "Out" socket on rear panel of X100 to "Video In" socket on top panel of X101.**

The X101 monitor has been factory preset but if adjustment is necessary, using a suitable trimmer tool the following adjustments can be made:

To Adjust the Brightness, carefully turn the top preset on the left side of the X101.

To Adjust the Contrast, carefully turn the middle preset on the left side of the X101.

To Adjust the Colour, carefully turn the bottom preset on the left side of the X101.

The X101 is supplied with a 2 metre length data link cable (straight-through type);

# Camera Tester

The X101 can be used as a general camera tester, independent of the X100.

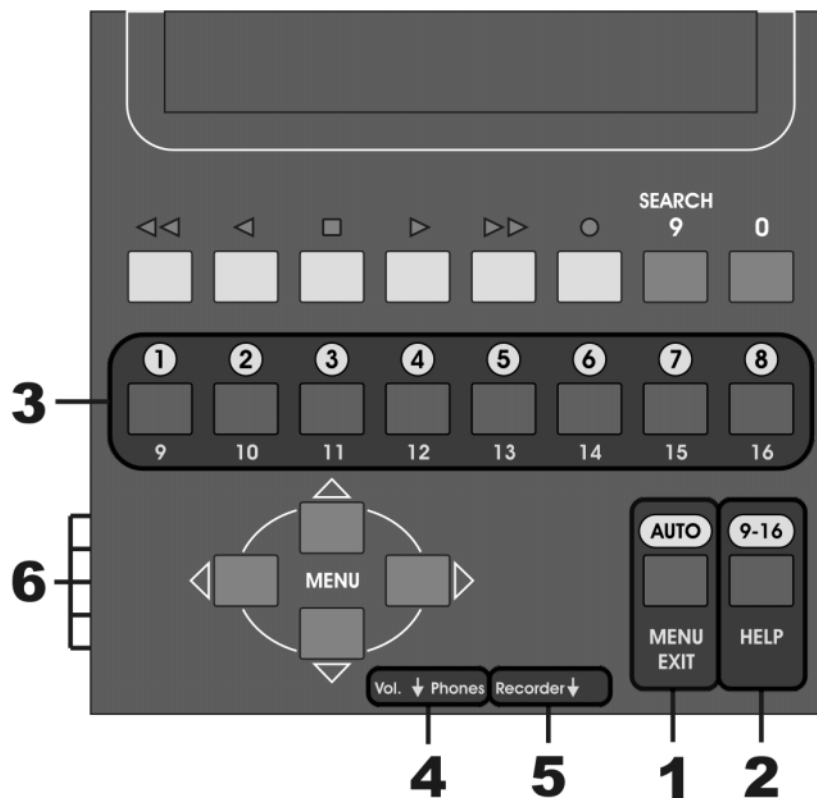
Connect the Video Out from the camera to the 'Video In' connector on the X101.

Connect power (12V  $\pm$ 1.2V) to the 'Power In' connector (centre positive) on the X101.

The camera view will be displayed on the X101 monitor.

## Using the X201 Reviewer with the X100

Although the X201 Reviewer is fully compatible with the X100, some of the keys and connections do not perform the labelled functions when used with the X100. The numbered points highlighted in the diagram below describe any operational differences.

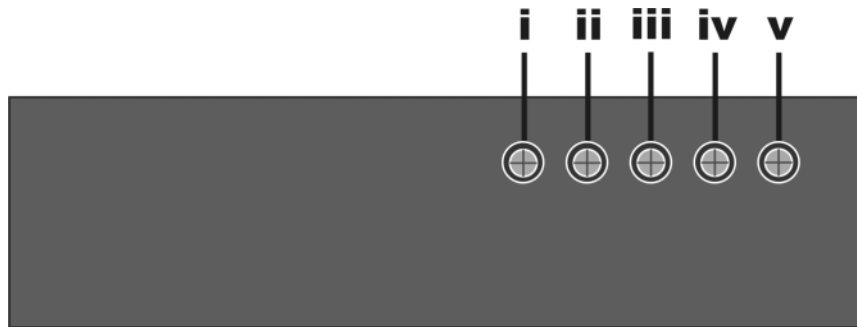


- 1) The X201 key marked *AUTO*, *MENU* & *EXIT* performs the *AUTO* & *DELETE* functions when used with the X100, as per the corresponding key on the X101. It will not perform either the *MENU* or *EXIT* functions as marked.
- 2) The X201 key marked *9-16* & *HELP* performs the *ZOOM* & *HELP* functions when used with the X100, as per the corresponding key on the X101.
- 3) The horizontal row of 8 camera selection buttons marked *1-8* have the same function as the corresponding buttons on the X101. The numbers *9-16* printed below the same row of buttons have no relevance when used with the X100.
- 4) The *Vol.* & *Phones* controls at the base of the X201 do not have any function when used with the X100.
- 5) The socket marked *Recorder*, used to connect the cable linking the X201 Reviewer to the X100, is located on the base of the X201 as opposed to the top of the X101.

- 6) The X201 has 5 picture adjustment pots situated at the bottom of the left-hand side of the reviewer; these should not under most circumstances need adjusting from the factory settings. If however an adjustment is necessary then please ensure that an appropriate plastic trimmer tool is used in a gentle manner.

These 5 picture adjustment pots are classified as follows.

- i) NTSC Tint (colour balance when using an NTSC feed)
- ii) Colour
- iii) Brightness
- iv) Contrast
- v) Sharpness (image pixel sharpness/smoothness adjustment)



Please note that unlike the X101, the X201 does not have a separate *Video In & Power In* connections. The X201 is only able to take power and video signals from the X100 via the proprietary data link cable included with the X201. Therefore the X201 is unable to act as a stand-alone camera tester.

All other keys and connections perform as labelled, and as per the corresponding ones on the X101. Please refer to the *Operation & Menu System* sections of the X100 manual for instructions on how to use the reviewer with an X100 Digital Video Recorder.

# ACCESSING / STORING IMAGES

## PCLink V2.21

### Introduction

PCLink v2.21 is a Windows based application that will allow .oba video footage files to be viewed on a PC. These files are automatically created by the X100 recorder on its removable disk cartridge. The cartridge must be connected to the PC to access the files on the cartridge.

Playback options include play, forward-wind, rewind, single frame skip, jump to markers, time line jumping and stop.

Screen shots can be written to the Windows clipboard and pasted into most art packages in the BMP (Windows standard) image file format or saved directly to a BMP format disk file.

Sections of video footage can be selected and saved directly to an independent .oba disk file.

### V2.21 enhancements over V2.1

- V2.21 has a "print selected camera window" option in the File menu. This allows the user to print an image to his local printer.
- Copy image to clipboard with watermarks enabled caused a crash in V2.1 - fixed.
- Double clicking an oba file can be made to select PCLink V2.21 program. (Open with \Program Files\PCLink V2\PCLinkV2\_21.exe) . If this assignment is made then double clicking an oba file will cause PCLink to load up and the file selected to open.
- V2.21 fixes the "white blocks" issue on V2.2 - occasionally white blocks appear in the dark areas of the pictures.

*Under Windows 98 automatic loadup may not be possible immediately. Go to:  
Start->Settings->Folder Options->File Types (menu tab) then select oba file then edit, click open (in the actions box) then edit and use for the application to perform action "C:\Program Files\PCLink V2\PCLinkV2\_2.exe" "%1"  
or equivalent. Note the speech marks and space between the two sets of speech marks.*

### Minimum Requirements

PCLink v2.21 runs on Windows 95, 98, 98SE, Millennium, NT4 Service Pack 1+, 2000 and XP.

**Windows NT** does not support USB so a frame kit is required to access cartridges and a FAT32 driver is required for NT (it cannot deal with FAT32 natively). Timespace have not tested FAT32 drivers for NT. NT will play back oba files stored on CDs.

**Windows 95** does not support USB so a frame kit is required to access cartridges.

Although PCLink v2.21 will run on most PC systems it is recommended that the minimum system be a 200Mhz system. Video playback speeds are dependent on processor speed.

Screen Resolution of 800x600 or higher is recommended.

Hard disk space: 2MBytes used by installation and when running. Recommend 100MBytes free for uploading Archive files.



## Installation

To install PCLink v2.21 execute the install file

“SETUP\_PCLink\_V2\_21.exe”

The default directory for the PCLink V2 software will be.

“Program Files -> PCLink V2”

The installation directory may be change without any affect on the execution of the software.

PCLink v2.21 will install itself to a directory which will not affect any existing version of PCLink that are installed on the machine.

## Starting PCLink

To start running PCLink click Start on the bottom left of the Windows screen and then follow **Start>Programs>PCLink V2>PCLink**. Note that this location is only valid if the default settings were used during installation.

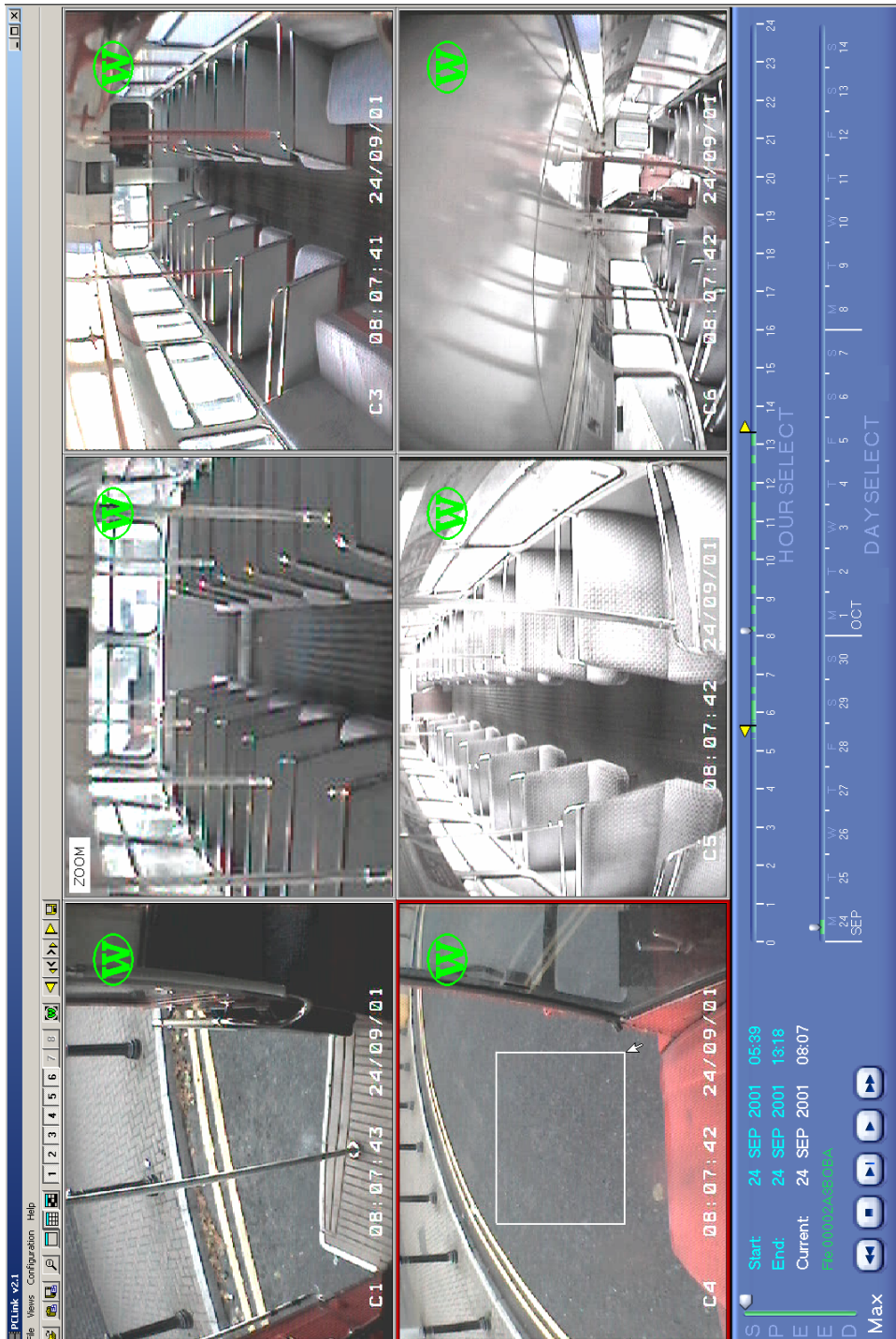
## Installing Cartridge

Remove cartridge with recordings by unlocking slider on front of cartridge and pulling from the recorder.

To access recordings on cartridge, take to PC with PCLink already installed on PC. Connect cartridge to PC using USB Interface Kit, or load into bay if Frame Kit has been installed.

## PCLink v2.21 Quick Reference

- Watermarks in Green.
- Click on hour or day select cursors to access recordings - no files to wade through.
- Zoom activated by dragging the mouse in a window.
- Double clicking gives single camera view. Double click again to go back to multi-camera view
- Green areas on hour and day select bars show available footage
- Replay speed adjustable
- Standard playback control buttons



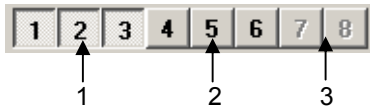
## Operating PCLink

Loading .oba files can be accomplished in 4 ways.

1. If the configuration option “Auto Load From Cartridge” has been selected and a cartridge is attached to the system, then the entire .oba contents of the cartridge will have been loaded when PCLink v2.21 was executed.
2. “Load OBA File” from the file menu. (see Quick Reference illustrations)  
This will display a file selection box and allow a single .oba file to be selected and loaded.
3. “Load Multiple OBA Files” from the file menu. (see Quick Reference illustrations)  
This will display a file selection box and allow the selection of the .oba files required to be selected. When the correct files have been found selecting any of the .oba files from the directory will cause the entire contents of the directory to be loaded into PCLink 2.21.
4. If a cartridge is attached to the system then the menu option “Load From Cartridge” (see Quick Reference illustrations) will become available. Selecting this option will cause PCLink v2.21 to load the entire .oba contents of the attached cartridge.

### Camera Buttons

When video footage has been loaded the camera buttons will be configured to match the active cameras contained within the .oba files.



1. Selected buttons represents a present camera which is being viewed.
2. Non-selected buttons represents a present camera but not viewed.
3. Greyed out button represent a camera which is not present in the .oba file.

These buttons are also represented with menu options under the View menu. Short cut keys 1-8 will also work to activate / de-activate the camera buttons.

## Camera Display Mode Buttons



Three camera display modes are available.

### 1. Single camera mode:

This will only display a single camera window. To select different camera window use the camera buttons to change the visible camera window.

### 2. Multiple camera mode:

This will display all the camera windows which are active within the .oba files.

### 3. User defined camera mode:

The user defined camera display mode displays only the cameras which the user specifies. Clicking a camera button will add / remove a camera window from the view window. Changing to another camera display mode and back to the user defined camera display mode will not affect which cameras were activated in the user defined mode.


In all 3 camera display modes the user can double click the left mouse button in any given camera window to display this window in full screen mode. Double clicking the left mouse button in the camera window again will return the display mode to its original status.

## Camera Windows

All camera windows which have been selected for display with the camera buttons will appear on the screen. The camera window which is the selected window has a red border whereas the others have a grey border. To change the selected camera window click the left mouse button in the window to be selected. The selected camera window can be used for “copy camera to clipboard” or “copy camera to file” from the file menu or toolbar buttons. See section on copying to clipboard / disk file for more information.

## Zoom

Zooming in on a section of video is achieved by holding down the left mouse button at a position in the camera window and dragging the mouse (with left button held down) until the required area for zoom is reached. A white bounding box will show the area which will be zoomed into. Releasing the left mouse button will then activate the zoom mode.

To return to un-zoomed mode a left mouse button click in the zoomed window will clear the zoom. Alternately the “Clear All Zooms” button  on the toolbar will return all zoomed windows to un-zoomed mode.

## Play Controls



1      2      3      4      5

1. Key frame skip backwards.
2. Stop
3. Frame skip forwards.
4. Play.
5. Key fame skip forwards.

The buttons work as radio buttons. This means that one will cancel out the other. If for example you are in play mode and the key frame skip forwards button is pressed then that becomes the new mode and the play button is stopped.



In any of the modes, when the beginning or the end of the video is reached the pointer will be placed at the end or start accordingly.

## Timeline Selectors



The timeline is designed to show periods of time which the .oba video files occupy. The timeline is split into two sections, hour selector and day selector. The day selector shows which dates have footage in and the hour selector shows the times of that day that have footage. Both selectors display the same information but the hour selector will be more accurate when certain times of the day need to be selected. The green areas of both selectors are the areas where footage actually exists. To skip around the footage just click the left mouse button over the green area of the time required. If a selection is made which is outside of the green used areas then the current position will be set to the nearest time in which footage exists. Selecting a position on the day selector will adjust the hour selector to match that day of the footage selected.



The day selector can be set to display 1, 2, 3, 4 or 5 week periods. If the footage that is loaded uses up more than then selected number of weeks displayed in the day selector then the week


skip buttons will appear   to allow the day selector to be moved (week by week) forwards or backwards in time.

## Timeline Marker Flags



The timeline markers are used to save a section of video. The generated file will be saved as a single .oba file and contain all the video footage between the start and end markers.

To set the start and end markers, place the current video position to where the footage is to begin and select the “Set Start Marker” button  from the toolbar. Do the same for the end marker by selecting the “Set End Marker” button  from the toolbar.

To save the footage click the “Save OBA File” button  from the toolbar and enter a file name for the new .oba file to be generated in the save file window.

## Video Information Panel

Start:	24 SEP 2001	05:39
End:	24 SEP 2001	13:18
Current:	24 SEP 2001	08:07
File:	00002A3B0BA	

The video information section displays the information for the currently loaded video footage.

Start: Start time and date for the entire video footage.

End: End time and date for the entire video footage.

Current: The time and date of the current position in the video footage.

File: Is the file name of the .oba file which is currently playing.

## Speed Control



Video footage can be played back at 5 levels of speed. On Max level the footage will play back at the fastest rate that the system it is running on can accommodate. The four other levels of speed are percentages of the max speed.


## Watermarks



**The watermarks can be activated and de-activated with the configuration menu option “Display Watermark”.**

A valid watermark for video footage is a green indicator (image 1.) and invalid footage will display a red indicator (image 2.).

In some cases the screen location of the watermark indicator may need to be changed (in cases of the image appearing on top of footage to be viewed); in this case the toolbar button

“Change Watermark Position”  can be used to rotate the watermark indicator around the four corners of the camera window.

## Password

PCLink can have password protection on entry into the system. If no password is required then the password entry will not appear. If no password is active and one is required then using the menu option "Configuration->Change Password" will allow a password to be specified for the system. The password can also be changed at any time with the same menu option. Passwords can contain up to a maximum of 30 characters in length and comprise any of the keyboard character set.

## File Transfer

There are two methods of accessing on a PC files stored on an X100 disk cartridge:

1. USB Interface Kit (T403-USB).
2. Frame Interface Kit (T403-FRM).

When the T401-series hard disk cartridge is connected to the PC via the appropriate interface kit, the proprietary .oba video files can be copied onto the PC using a program such as Windows Explorer. With Windows Explorer running, locate the connected hard disk cartridge and view the contents. To copy files to the PC, select the files on the hard disk cartridge required and select the copy option from the Explorer menu. "Edit -> Copy". Now select the required destination directory on the PC and select the option "Edit->Paste". The video files are now ready for viewing. Alternatively, access the cartridge directly from PCLink.

**The X100 hard disk cartridges work with a standard Windows filing system, however, low-level disk operations should NOT be used. "Format" and "defragmentation" on the cartridge will result in permanent loss of recordings. Do not write or modify data on the cartridge other than changing the Write Protection status of files. Do not attempt to write to the removable disk cartridge or any delete files stored onto it.**


## Pasting Image to Art Package

The following example uses Windows Paint to demonstrate this function. In most cases the option for pasting an image from the Windows Clipboard will come under the menu option “File->Paste”, but for some applications refer to the applications user manual for an explanation on this feature.

Before an image can be pasted into an art package, it first needs to be placed into the Windows clipboard by using the menu option:

“File -> Copy Camera to Clipboard”

or with the toolbar button

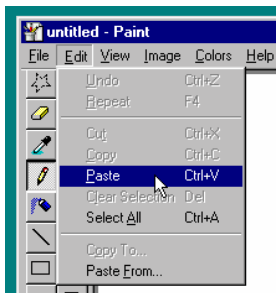
“Copy Image To Clipboard” 

This will copy the contents of the window with the red border into the paste buffer. Now run Windows Paint which can be found in the Windows “Start” menu under:

“Start -> Programs -> Accessories -> Paint”

Note: This may vary for different version of the Windows Operating System; please refer to your Windows User Manual for more information.

The Paint menu option “Edit -> Paste” will now paste the contents of the Windows clipboard into a new image which can be saved to a disk file:





# RemoteLink V1.1.2

## Introduction

RemoteLink allows the user to connect via a modem to a remote X100 unit equipped with a GSM modem, and control it as if using an X101 Reviewer. All features of the X101 Reviewer are supported, but image display is slow due to the speed limitations of the GSM network. Menus can be accessed and modified, live video displayed and recorded footage viewed.

## Overview

If the user is familiar with setting up the X100 using an X101 reviewer there is little further to learn - you have the same functionality but remotely. The software allows the PC to dial up an X100 unit and once the connection is made the control as the reviewer.

It is important to bear in mind that the data rate is 920 bytes per second (a typical full image is 50,000 bytes) so playing back images, or displaying a live view takes time.

The hardware of a remote link system consists of an X100 connected to a GSM modem (Siemens TC35) and a PC with internal or external telephone modem (PSTN) connected to a telephone socket. For every X100 you need a GSM modem, but you may only require one PC to access a number of X100 remote systems.

RemoteLink PC software will run on Windows 98, 98SE, ME, 2000, XP, and NT4 Service Pack 6+. RemoteLink does not work on Windows 95.

## Hardware Required

TC35T Siemens GSM modem (Dual-band model suitable for UK and European use)  
Vodafone SIM card (pre-inserted into GSM modem above)  
Antenna  
Serial cable (see specification below)  
Power cable (to connect modem to X100 power circuit) (see specification below)  
X100 and cartridge with V1.5 software

### Further items required for PC side

PC with in-built modem  
SETUP\_RemoteLink\_V1\_1\_2.EXE  
Software download cable for X100 + X100V1\_5.EXE (X100 V1.5 software loader) (only if V1.5 needs to be downloaded to cartridge)

## Specification of Cabling

### RJ12 Power Cable

Pins	Connect to	Function on modem
1	12V	+V
2	12V	free
3	GND	PD_IN (reset input active high)
4	12V	IGT_In (Ignition input active high)
5	GND	free
6	GND	GND

### RS232 Serial Cable

Female	Connected to	Male
X100	to	Modem
End		End
DType9		DType9
1		1 DCD
2		2 RX
3		3 TX
4		4 DTR
5		5 GND
6		6 DSR
7		7 RTS
8		8 CTS
9		9 RI

# Installation

## 1 Configure the SIM card

A SIM card needs to be plugged into the GSM modem for it to work. The SIM card provides the GSM modem its identity i.e. its phone number and any account information that may be needed. You may need a mobile phone to configure the SIM card. Timespace have only used Vodaphone SIMs and all the information below relates to UK Vodaphone SIMs valid on Sept 2003.

### UK Vodaphone SIM Card Example @ Sep 2003

Register the Vodaphone SIM card with Vodaphone and obtain from Vodaphone an analogue data number for the SIM. The SIM can then be put into the GSM modem. The analogue data number is what Remote Link dials to access the GSM unit. **Remote Link cannot use the normal mobile phone number that comes with the SIM, but needs a specifically assigned data number provided by Vodaphone.**

Insert SIM into a generic mobile phone (not Virgin or branded phone). Insert batteries. Charge it up fully (it may take up to 15 hours). Find out SIM telephone number (Typically dial \*#100# on the mobile and the number will appear on the screen. You can also find this by ringing or sending a text message to another mobile). Write the number in i) below.

Enter the following information:

- i) Mobile Phone number (SIM number) (see 4) \_\_\_\_\_
- ii) Contact Name \_\_\_\_\_
- iii) Contact Address \_\_\_\_\_
- iv) Password \_\_\_\_\_  
(choose one - there is minimal security implications on this password)

Make a call to Vodaphone (typically on 0870 0776655). Go to phone registration (I used extension 5). Register each SIM by providing the information above and ask for an "**Analogue Data Number**" for the SIM. You may be asked for other information. You can get analogue data numbers for several SIMs on the same phone call if you wish.

The analogue data line team should be able to provide an analogue data number while you wait. Note - you cannot use the normal mobile phone number of the SIM for GSM modem use. You may also be given a fax number and a digital data number (ISDN number). Neither can be used for the RemoteLink application.

Analogue Data Number \_\_\_\_\_

You need to put the SIM into the mobile phone and make a call to any phone number. Someone should pick up the call. This initiates the SIM into activity. If you used the mobile phone for part d. then you have activated the SIM already and you do not need to do step 5.

If you are dealing with multiple modems it is recommended that you keep a list for each SIM of the SIM number (written on the SIM, 24 - digit) and analogue data number and normal phone number. If a modem doesn't answer, Vodaphone may be at fault - to fix it they will need this information.

**Some SIM cards may expire after 3 months or 6 months if no outward calls have been made. It is essential that either the SIMs you are using do not expire or the SMS Message menu (V1.51m software) is used to configure the X100 to send an outgoing SMS text message at the necessary intervals to keep the card active.**

Further Notes: Vodaphone SIM Card Park, currently @1<sup>st</sup> Nov 02, £30 from Vodaphone shop. Non Vodaphone SIMs may be used but only Vodaphone SIMs have been tested by Timespace. (Orange SIMs and Virgin SIMs are known not to currently facilitate analogue data numbers and so should be avoided).

## 2 Insert SIM card into modem

Press in the little button on the side of the SIM tray using a pen. This pushes the SIM tray out. Remove the SIM from the mobile phone and place it into the SIM tray and slide the tray back into the TC35.

## 3 Load V1.5 software onto X100 system

You need an X100 with a cartridge and a software download cable.

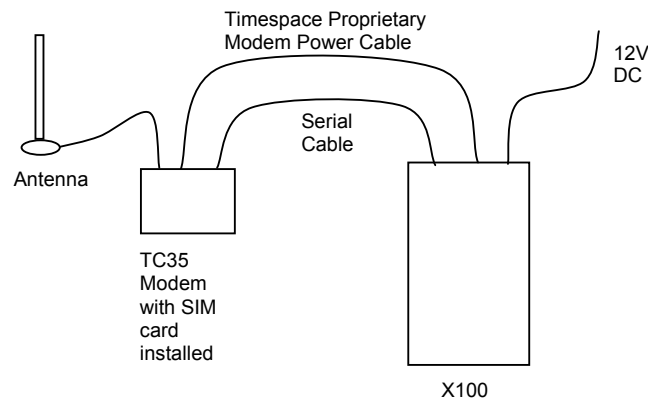
Insert CD provided by Timespace into a PC.

Run X100v1\_5.exe software download utility.

Follow instructions on screen - note that the modem serial cable cannot be connected to the PC - you need a software download cable (null cable with TX/RX lines crossed).

## 4 Connect modem equipment

Connect the modem equipment as shown in the diagram below:



The TC35 GSM modem comes supplied with a mains power adaptor should you wish to use this power option. The proprietary power cable provided is indicated in the above diagram.

The X100 system can now be switched on. It is ready for dial up.

## 5 Install Remote Link V1.1.2 onto PC

Insert CD provided by Timespace into a PC.

Run SETUP\_RemoteLink\_V1\_1\_2.EXE which will install the remote link software on your PC.

You will need a modem connecting your PC to an external phone line to make the connection to the GSM enabled X100 system.

N.B. If you currently have a previous version of RemoteLink installed you should uninstall that version before installing the new one. To do this, follow the instructions as shown in "Removing RemoteLink" on the following pages.

Once the installer has prepared the files ready to install it will give you a few options to customize the installation. It is recommended that you use the default at each stage unless, for example you wish to install RemoteLink in a particular directory, or put it's icon in a particular place in the START menu.

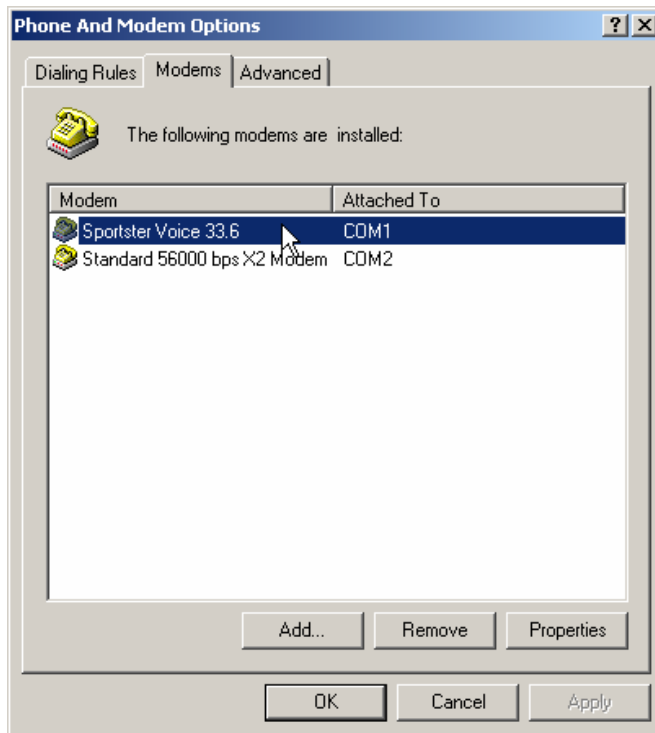
## Running RemoteLink

The RemoteLink main screen is a facsimile of the X101 Reviewer that it emulates, complete with screen, buttons and LEDs. All reviewer functions can be performed including the access and control of menus, live video display and recorded footage playback.

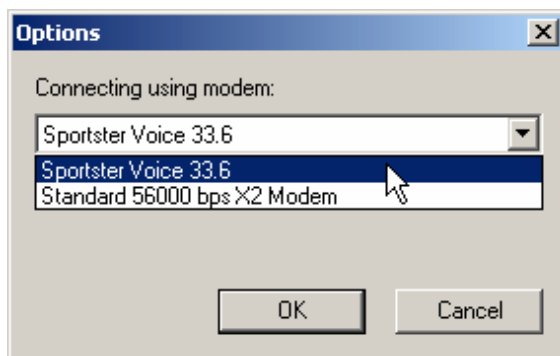


## Selecting a modem

Before you can dial up any remote you units, you must first select the modem to use. This must be a modem that MS Windows recognises as one that it can use. It may be an internal or external version, but you must have installed the drivers that came with it and it must be visible in the list of installed modems. To check this list, open the Start menu and choose Settings>Control Panel. From the Control Panel list choose “Modems” or “Phone And Modem Options”



In RemoteLink, choose Tools>Options... from the main menu. The following dialog will appear:



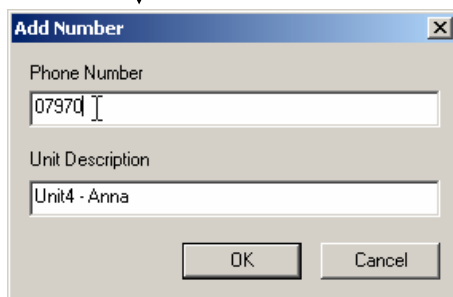
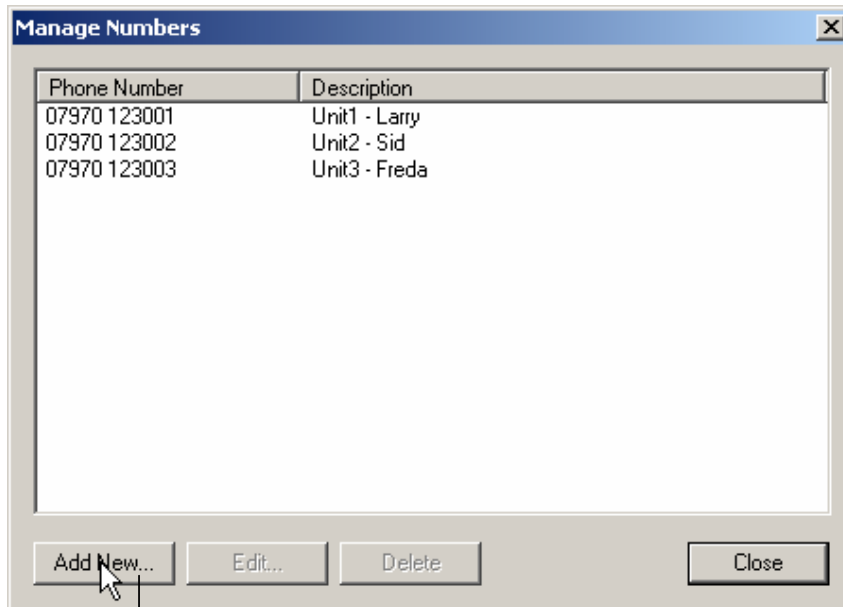
Click on the list box to see the available modems, and choose one. The highlighted modem will be used from now on. Click on OK to confirm you selection.

If you do try to connect to a remote unit without first selecting a modem in this way, RemoteLink will not be able to place the call, and will remind you to select a modem.

## Entering / managing phone numbers

RemoteLink maintains a list of phone numbers of your remote units. When you contact a remote unit, you choose one of these numbers from a list. This avoids mistyping a number.

To Add numbers to the system, choose Tools>Manage Numbers... from the main menu. This will open the Manage Numbers Dialog. If you click on the Add New... button, the Add Number dialog will open and you can enter the new number and a description of that unit.



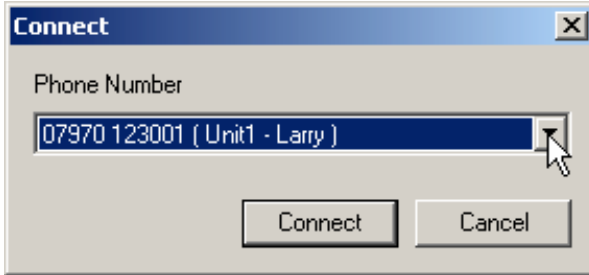
Any phone number you enter must only contain digits and optionally spaces. The unit description should be kept concise and will be used to show the user which unit is being accessed. Click OK to confirm the new number or Cancel to abort.

To edit an existing number, select it in the Manage Numbers dialog, and click on the Edit. You may edit the existing phone number and unit name. The same rules apply as for adding a new number. Click OK to confirm the changes, or Cancel to abandon the editing.

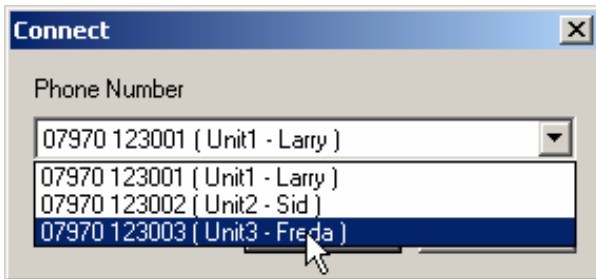
To delete a phone number, select it from the list and click on Delete. You will be asked for confirmation of this action.

## Contacting a remote unit

Once a modem has been selected and there is at least one phone number stored in the system, RemoteLink will be able to dial a remote unit. To do this choose File>Connect... from the main menu. This will open the Connect dialog:

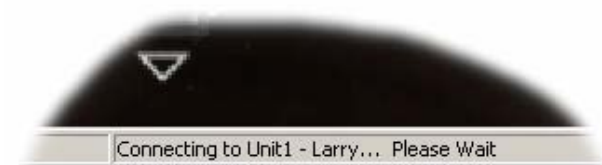


To select the number to dial, click on the down-arrow on the Phone Number drop-down box. This will show you all the numbers available.

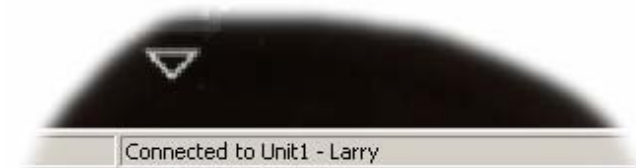


Click on the desired number and the drop-down box will close with that number selected. Click on the Connect button to start dialling.

The status bar at the bottom of the RemoteLink window shows that it is attempting to connect to the remote unit as shown:



Upon successful connection the status changes to Connected, along with the unit name:



To close the connection choose File>Disconnect from the main menu. The call may take a second to close down, at which point the status change to Not Connected.

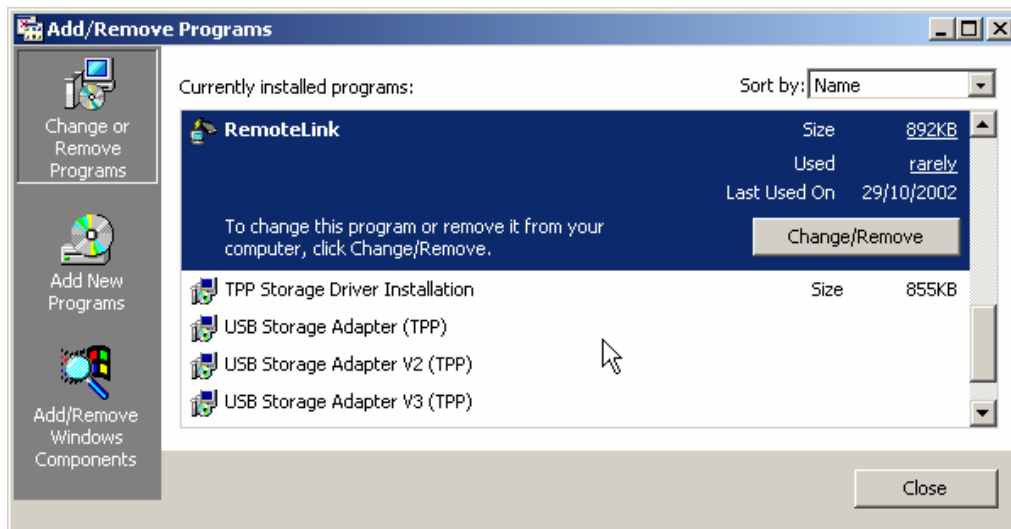


## Remote operation

Once a connection has been successfully made to a remote unit, the keyboard, LEDs and screen will be active, as if you are using an X101 Reviewer attached to the unit. Live video and stored footage can be viewed on the screen, all menus edited and parameters set. There is a noticeable delay when video is being transferred - please wait for any video to be uploaded. Keypresses are registered with the X100 after video upload.

## Removing RemoteLink

To remove RemoteLink from your PC, either because it is no longer needed, or you wish to install a newer version, open the START menu and choose Settings>Control Panel, then open Add/Remove Programs. In the Add/Remove Programs dialog, find the RemoteLink entry and click on the Change/Remove button.



You will be asked to confirm the removal of the program. Answer Yes. The old version will then be removed.

The above screen shot is taken from Windows 2000. Windows 95, 98, ME and XP have a similar interface.

### **Important Note.**

*It is recommended that PABX extensions should not generally be used for modem connections as common in office environments, as they are known to be incompatible. Some PABX lines may be configured for use with PC modems, but if this is not available then always use a dedicated external line for modems.*

# OBA to AVI File Converter V1.1.2

## Introduction

The X100 and OmniBase digital video recorders record proprietary .oba files which can only be played back by PCLink. The OBA to AVI conversion utility allow users to convert the proprietary OBA file recordings into standard AVI video files for viewing or editing using industry standard tools.

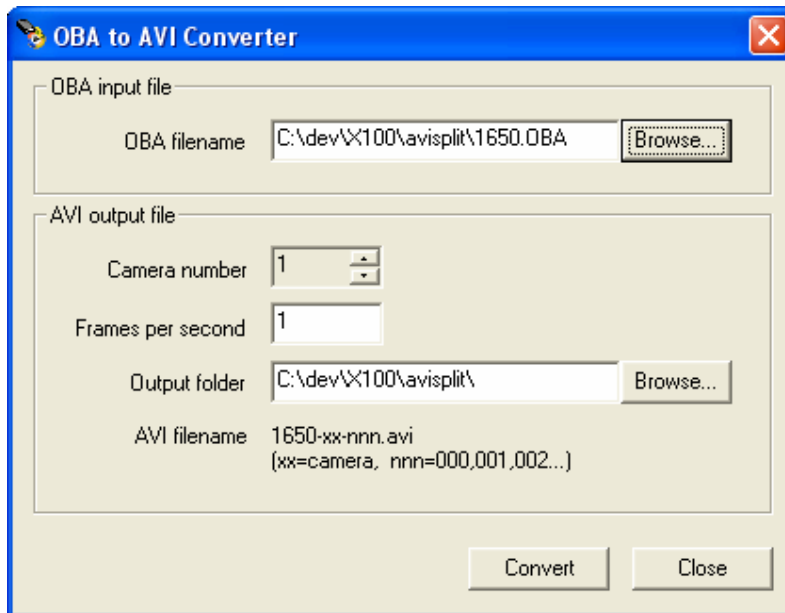
To install this program run SETUP\_OBA2AVI\_V1\_1\_2.exe and follow the instructions.

**Note:** It is important to understand that the watermark information held in the OBA file is not maintained in the converted AVI file. If the video information is to be used as legal evidence it is important that the original OBA file is retained as the primary evidence.

The OBA to AVI converter may be run on Windows 95, 98, 98SE, ME, 2000, XP and NT4 Service Pack 6+.

## Usage

When running the program you will be presented with a dialog box, as shown:



Select the input OBA file, by clicking the Browse button next to the OBA filename. This will pop-up a standard file selector dialog, and allow you to navigate through the file system to select the OBA file you wish to convert.

Next, enter the Camera Number of the camera view within the OBA file you wish to use. Also enter the number of frames per second you recorded the video at.

Now, select the Output Folder where you wish the AVI file(s) to be created. You may do this by clicking the Browse button to select a folder on your computer, or type the location of the directory, directly into the Output folder text entry section.

**Note:** it is important that the Output Folder is not on an X100 drive cartridge. It is not permitted to create or modify files on any X100 cartridge if that cartridge is to be reinserted into an X100 for further use.

Finally, click Convert and the system will display a progress bar indicating percentage of conversion completed so far.

The AVI files produced will normally be larger than the original OBA file. When an AVI file reaches 620 Megabytes a new AVI file is created. The files are limited in size to 620 Megabytes so that they can be easily copied onto a CD ROM if required. The AVI files will be named *filename-01-000.AVI*, *filename-01-001.AVI*, *filename-01-002.AVI* etc. where *filename* is the base filename of the OBA input file, followed by the camera number (here camera 1 was chosen), followed by the sequence number. Typically only 1 file is produced and it is called *filename-xx-000.AVI* where *xx* is the camera number.

On completion of the conversion, you will have a set of AVI files that can be viewed and edited using standard tools. We have chosen to use uncompressed AVI files as these can be used with the broadest range of tools and utilities.

## Transferring Files to PC

### USB Interface Kit (T403-USB)

Provides all hardware and software necessary to access recordings on a hard disk cartridge after it has been removed from the X100 Recorder, connecting the hard disk cartridge to the external USB socket on a PC.

### FRAME Interface Kit (T403-FRM)

Provides all hardware and software necessary to access recordings on a hard disk cartridge after it has been removed from the X100 Recorder, by inserting in a permanent drive bay PC installation.

Please note that when using Windows XP it is possible for Windows to automatically remove files from the Hard Disk Cartridge that it deems corrupted during start-up.

## Transferring Images to Video Tape

The composite video output of the X100 should be connected to the composite video input (typically phono connector) of the VCR; a phono-BNC adaptor may be required. On the VCR select the composite video input (eg AV1). The video output from the VCR can be checked on a TV or monitor, which will be displaying the X100 screen.

On the X100 select the camera and find the first image of the sequence to be recorded. Start the VCR recording and press PLAY on X100 and the sequence will be recorded. Stop the VCR and the X100 when the recording is complete.

To improve results and increase the amount of footage recorded press PLAY twice on X100. This typically allows a 3 hour VCR tape to store 12 hours of X100 recording.

# APPENDIX

## Safety

Meets the requirements of BS EN60950 (Safety Requirements of Information Technology Equipment).

Designed to be powered from an external power source which complies with the Low Voltage Directive (73/23/EEC).

Designed for indoor use in the temperature range 5° to 40°C, 20% to 80% RH (non-condensing).

**WARNING: Do not wet the product when cleaning**

**WARNING: This product contains a lithium battery. Do not recharge, open, heat or dispose of in fire. Dispose of according to local regulations.**

**WARNING: It is important to allow enough ventilation in any surrounding enclosure so that the operating temperature range is not exceeded. Any enclosure should incorporate a fan to assist in thermal dissipation.**

WARNING: The use of any power source, other than that supplied, may cause damage to the product, and will invalidate the warranty.

## X100 EMC Conformity (CE Mark)

Meets the European Council Directive 89/336/EEC (EMC Directive) relating to EMC Emissions (EN50081-1(1992)) and EMC Immunity (EN5008201-1(1992)).

## X100 EMC Conformity (E Mark)

Meets the Type Approval requirements of European Commission Directive 95/54/EC

## **X100 EMC Conformity (Specification 5)**

Meets the requirements of Automotive Conformance Specification 5 Issue 8 Class 2(a) - UK Home Office.

## **Guarantee**

Material and labour are guaranteed for 12 months from date of purchase. Defective products will either be repaired or replaced, at the discretion of the manufacturer.

# Specifications

## X100 Digital Video Recorder

### Recording

Format	JPEG compression
Recording Medium	2.5" IDE, PC-compatible hard disk
Recording Modes	Recording period, recording image interval, or calendar period; single pass recording or loop recording
Recording Format	Full update or conditional refresh
Max. Record Rate	5 images/second (divided by the number of cameras used)
Resolution	High/Medium/Low
Resolution TVL	468
Pixels	624(H) x 280(V)
Alarm Recordings	10,000 alarm events. Write-protection
Embedded Text	Camera/date/time plus 25 characters

### Configuration

Entry	Menu system with help screens
Password	4 user-definable levels
Timer	7 day programmable

### Video Classification

Format	PAL or NTSC
System	Duplex (review while recording)

### Playback

Functions	Rewind, Fast Forward, Play, Pause,
Frame, Advance, Zoom	
Image Search	Time/date, alarm history

### Connections/Controls

Video Inputs	8 total (4 x BNC; 4 x DIN)
Video Output	1 x BNC monitor output
Input Signal	Composite video
Alarm Inputs	4 x pairs screw terminals
Power Inputs	2.1mm DC socket (for PSU supplied) 1 x pair screw terminals for 12V input
Alarm Output	1 x pair screw terminals
Modem	9-way D connector (RS232 serial)
Reviewer	RJ45
Power On/Off	Push button (can be menu disabled)
Indicators LED	Power, Recording, Hard Disk Status

### General

Power (AC)	PSU 12VDC out, 100-250VAC in
Power (DC)	12VDC +/- 1.2V
Power Consumption @ 12V	
Recording (~7W)	0.55A
Not Recording (~6W)	0.46A
Low Power Mode	12V 2.5mA (alarm wake-up)
Clock	High resolution TCXO (+/- 1 min./year)
Case	Mild steel, black painted
Dimensions (mm)	211 x 110 x 47
Weight	1.2Kg (inc. hard disk cartridge)
Op. Temp. Range	+5C to +40C, 20% to 80% RH
Storage Temp. Range	-40C to +65C
EMC	EN50081-1 & EN50082-1 (CE)
Environmental	Indoor use
Mounting	Free-standing or screw-mounted
Supplied Accessories	Instruction manual, Mains PSU, IEC lead
Warranty	12 months

## Removable Hard Disk Cartridge

Hard Disk	2.5" IDE.
Dimensions (mm max.)	143 x 84 x 23
Weight	350g
Warranty	12 months.

## X101 Reviewer

Functions	Programming, checking camera views, review live or pre-recorded images on X100. General camera tester
Operation	22 tactile keys with LED indicators
Power	Powered by X100 (0.5A consumption) or external PSU if used as camera tester (12V +/- 1.2V)
Display	Built-in 5" LCD monitor, TFT 960(H) x 234(V) pixels, PAL or NTSC
Connectors	X100 Interface - 8 way RJ45 (serial data; video; DC supply) External Video Input - 1 x BNC
Case	Mild steel, black painted
Dimensions (mm)	211 x 143 x 47
Supplied Accessories	Data Link Cable, Instruction manual
Warranty	12 months



# Troubleshooting

## Error Messages and Other Messages

The following messages may be displayed by the X100. A brief description is given.

```
CURRENT TIME HAS BEEN  
CHANGED DUE TO SUMMER  
TIME ADJUSTMENT:  
PRESS ANY KEY TO  
CHECK DATE  
-----
```

Message displayed on summer time adjust. Will happen when unit powered up after a summer time change.

```
ALARM OUTPUT ACTIVE  
BECAUSE....  
  
CAMERA HAS BEEN  
DISCONNECTED.  
  
PRESS ANY KEY
```

Alarm output indication message. Alarm output has been set to be active for a disconnected camera.

```
ALARM OUTPUT ACTIVE  
BECAUSE....  
  
ALARM IN WAS CLOSED or OPEN  
  
PRESS ANY KEY
```

Alarm output indication message. Alarm output has been set to be active in any alarm input is active event.

```
ALARM OUTPUT ACTIVE
BECAUSE....

HARD DISK IS MORE THAN
95% FULL

PRESS ANY KEY
```

Alarm output indication message. Alarm output has been set to be active if hard disk is approaching a full state (nearly all over-write protected).

```
ILLEGAL TIME / DATE!
TIME / DATE NOT SET
PRESS ANY KEY
-----
```

If an incomplete time or date has been entered the above error message is given. Pressing the record button (X101 reviewer) will disable any Timer / Alarm recording in progress.

```
ALARM

RECORDING TEMPORARILY
STOPPED. PRESS RECORD
KEY TO RESUME

PRESS ANY KEY
```

This may be useful for example to temporarily stop Timer / Alarm recording whilst menu edits are being made. Press record button to resume.

RESETTING SYSTEM  
-----  
PLEASE WAIT  
-----  
(MAX 40 SECONDS)  
-----  
  
THE UNIT WILL  
RESTART AFTER THIS  
PROCESS

The above message is displayed during a reset operation.

CAMERA DISCONNECTED  
AT TIME BELOW !!  
  
C1 12:24:04 26/03/02

The above text is written as an image and recorded. By doing this a record is provided of exact times and dates when cameras had been disconnected as part of the recorded footage.

CAMERA OUT OF LOCK!  
OMIT LINELOCK?  
  
C1 18:24:10 26/03/02

The above text is written as an image and recorded. By doing this a record is provided of exact times and dates when cameras have been out of lock as part of the recorded footage.

## Possible Problems and FAQ's

### X100

"Will not record"	Enter menu system; go to Main Menu, Other Menus, Advanced Menu; set to "Record at Power Up".
"Only recording on 1 camera"	Enter menu system, go to Main Menu, Normal Recording Menu; check that under "Order" the setting is appropriate to the number of cameras in use.
"Recording at varying times"	Enter menu system; go to Main Menu Normal Recording Menu, Timer Recording Menu; check it is set to "Disabled".
"The recorded picture is grainy"	Improve the light level to the camera, or increase the exposure level; use a camera which works to a lower lux level.
"X100 has power (red LED on), but fails to operate"	Ensure cartridge is pushed home and switched on (Green LED on).
"Cameras connected but no live views"	Press "Auto".
"No picture on X101 monitor"	Ensure that correct power supply to X100 (12V +/- 1.2V).
"PC can't see disk but recordings viewable on X100"	<p>The hard disk boot / partition / FAT sectors may have become corrupted. Go to RESET MENU and select NO and NO for the two options. Then select DO THE ABOVE NOW. This rewrites the boot and partition sectors without affecting the recordings or the menus. Then go into the FILESYSTEM menu followed by the CHECK FILES menu and run CHECK FILES PLUS DELETE BAD FILES NOW. This will rewrite the FAT area.</p> <p><b>Please also check the shock and vibration damping of the X100 as shock and vibration reduce disk life and can also lead to corruptions on the disk.</b></p>

### X101

"X101 shows camera producing horizontal distortions when viewed on video switcher but no distortion appears on the recording"	<p>If horizontal distortions appear across the picture when viewing the camera output on the X101, but no such distortions appear on a recording made from the camera, then the camera may not have any 'sag' compensation.</p> <p>This feature must be enabled with some cameras in order to allow their output to be properly displayed by the X101.</p>
---	--

## **T403**

**“PC fails to start if USB kit and cartridge is attached but switched off during start up”**

On some PC's Windows may not start correctly if an X100 cartridge is left attached to the PC via the T403 USB kit during start up. This may be the case even if the cartridge is switched off.

**T403 USB Kit compatibility with Win XP**

Early versions of Windows XP may have some compatibility problems when used with USB2 interfaces such as the T403 USB kit supplied to connect an X100 hard disk cartridge to a PC. This situation has been resolved with the issue of service pack 1 for Windows XP.

If you are having trouble installing and using the T403 X100 USB kit with Windows XP then check to see if service pack 1 has been installed (My Computer > View System Information > General Tab). If it is not listed under the System heading, then it may not have been installed and can be downloaded from Microsoft.