

# KSPECTRUM

## version 1.2.0

### User Manual

February 4, 2015

V. Eymet, Mésostar ([www.meso-star.com](http://www.meso-star.com))  
Laboratoire PLasmas et Conversion de l'Energie, Université de Toulouse

#### Legal mentions

KSPECTRUM is a free software released under the terms of the CeCILL license. This license is compatible with the GNU General Public License (GPL). See the COPYING file within the main directory.

Mésostar ([www.meso-star.com](http://www.meso-star.com)) provides and distributes the sources of the present code. By using this software, you agree to make a reference to KSPECTRUM in any publication using results that have been obtained with it. Support for the present code is no longer free. If you need to adapt the code to your needs, for any computational request, or if you need to get training in order to use the code, please contact Mésostar ([contact@meso-star.com](mailto:contact@meso-star.com)) and we will provide an estimation of our fees.

## Contents

<b>1</b>	<b>Getting started</b>	<b>3</b>
<b>2</b>	<b>Description of the code</b>	<b>3</b>
2.1	Production of high-resolution spectrum, full control of the uncertainty . . . . .	3
2.2	Range of applications . . . . .	7
2.3	Physical hypothesis . . . . .	8

2.3.1	Sub-lorentzian profiles and CIA . . . . .	8
2.3.2	Broadening by the rest of the gas . . . . .	9
2.3.3	High-temperature transitions . . . . .	10
2.4	A better respect of spectroscopy . . . . .	10
2.4.1	(no) line selection . . . . .	10
2.4.2	(no) truncation of lines and “continuum” . . . . .	11
2.5	Parallel computing . . . . .	11
2.6	The multi-pass approach . . . . .	11
2.7	Estimation of remaining computation time . . . . .	12
2.8	Not starting from scratch after a crash . . . . .	13
2.9	Automatic tabulation of Lorentz and Voigt functions . . . . .	13
<b>3</b>	<b>Installation and prerequisites</b>	<b>15</b>
3.1	Tweaking the “Makefile” . . . . .	15
3.2	Setting up array sizes . . . . .	15
3.3	Compilation . . . . .	15
3.4	Installation of MPICH . . . . .	16
3.5	Installation of LBL databases . . . . .	17
<b>4</b>	<b>Using the code</b>	<b>21</b>
4.1	User input files . . . . .	21
4.1.1	The “data.in” file . . . . .	21
4.1.2	The “options.in” file . . . . .	22
4.2	Other input files . . . . .	25
4.2.1	Atmospheric composition . . . . .	25
4.2.2	Isotopologue abundances . . . . .	25
4.2.3	Narrowband intervals . . . . .	26
4.3	Running KSPECTRUM using MPICH or OPENMPI . . . . .	26
<b>5</b>	<b>Results</b>	<b>27</b>
5.1	Results files . . . . .	27
5.2	More output files . . . . .	27
5.3	What’s next ? . . . . .	28
<b>6</b>	<b>The fun stuff</b>	<b>29</b>
6.1	Legal mentions . . . . .	29
6.2	Questions and Answers . . . . .	29
<b>A</b>	<b>Appendix - Validation</b>	<b>32</b>
A.1	Low pressures / temperatures . . . . .	32
A.2	High pressures / temperatures . . . . .	32

## 1 Getting started

The first thing you should do is to declare your fortran compiler in the F77 environment variable. In order to do so, you have to export the F77 environment variable in your `.bashrc`, `.cshrc` or `.profile` file; for instance, add the following line into your `.bashrc` or `.profile` file:

```
export F77="gfortran"
```

in case you are not using the gfortran compiler, replace “gfortran” by your local fortran compiler if needed (ifort, pgf, ...)

Then you need to type **source .bashrc** in order to take the modifications into account. Replace “.bashrc” by whatever you are using. The purpose of defining the F77 environment variable is to provide the correct compiler to compilation commands that will be used later by the installation script. If this variable is not defined, the name of your fortran compiler will be asked every time a compilation will occur.

You need to use the “install\_kspectrum.bash” script that is provided with the archive. This script should be placed in the same directory than the provided zipped archive. Use the `./install_kspectrum.bash` command in order to run it. This script will:

- Untar the archive, if the corresponding version of KSPECTRUM is not already installed
- Make appropriate links in the newly created directory
- Go into the “data” directory, compile program “make\_data.exe” and run in, in order to generate test files “composition.in”, “narrowbands.in” and “molparam.in” (see section 4.2).
- Remind you to install LBL databases into the “data” directory (see section 3.5).

Then you can go into the newly created directory (named “kspectrumX.X.X” with “X.X.X” the version number) to continue the installation.

## 2 Description of the code

### 2.1 Production of high-resolution spectrum, full control of the uncertainty

KSPECTRUM has been designed to produce high-resolution spectrum of any gas mixture, in any thermodynamical conditions, from line-by-line databases.

In practice, it is far from being the case: see sections 2.2 and 2.3, mostly because we have no idea of sub-lorentzian profiles and collision-induced absorption (CIA) in the general case. This code will be improved gradually when our knowledge of spectroscopy evolves. Anyway, the purpose of the present code is clearly NOT to produce spectrum that will be used in engineering applications (i.e. spatial missions). Rather, it is intended at producing reliable spectrum that may be used for subsequent radiative transfer analysis (production of radiative transfer parameterizations into planetary GCMs).

By “high-resolution” spectrum, we mean that the spectral resolution is high enough so that individual lines are well resolved. This point is discussed below. The main purpose of producing high-resolution spectrum, is the possibility to compute k-distribution data sets.

The main idea that lead to the development of KSPECTRUM is to produce a code that can compute high-resolution data for virtually any conditions, with a full control of the accuracy:

- Any value of  $k_a(\nu)$  has to be computed with a specified relative error  $\epsilon_1$ .
- The maximum relative error made when considering a linear profile  $k_a^*(\nu)$  between two computed values  $k_a(\nu_i)$  and  $k_a(\nu_{i+1})$  may also be specified:  $\epsilon_2$  (see Fig. 1).

Ideally, when computing the absorption coefficient  $k_a(\nu)$  at a given wavenumber  $\nu$ , the contribution of every line should be summed up:

$$k_a(\nu) = \sum_{l=1}^N k_{a,l}(\nu) \quad (1)$$

where  $k_{a,l}(\nu)$  is the contribution of the  $N$  lines index  $l$  to  $k_a(\nu)$ . In practice, it is impossible to use such a method to compute  $k_a(\nu)$  at high spectral resolution, because the order of magnitude of  $N$  is typically several hundreds of thousands, when not millions.

The first constraint of accuracy will be used to set up a faster algorithm: we start by discretizing the infrared spectrum in a given number  $N_b$  of “narrowband” intervals, whose spectral limits are known. Let us take the example of any spectral interval  $[\nu_{min}, \nu_{max}]$ . Each one of the  $N$  lines will be examined for this interval. For a great number of lines,  $[\nu_{min}, \nu_{max}]$  will be located in the far wings, and therefore the values of  $k_a(\nu_{min})$  and  $k_a(\nu_{max})$  are not very different. If the relative error  $\epsilon = \frac{|k_a(\nu_{max}) - k_a(\nu_{min})|}{\min(k_a(\nu_{min}), k_a(\nu_{max}))}$  is lower than the specified value  $\epsilon_1$ , then a constant value (for instance  $\frac{k_a(\nu_{min}) + k_a(\nu_{max})}{2}$ ) can

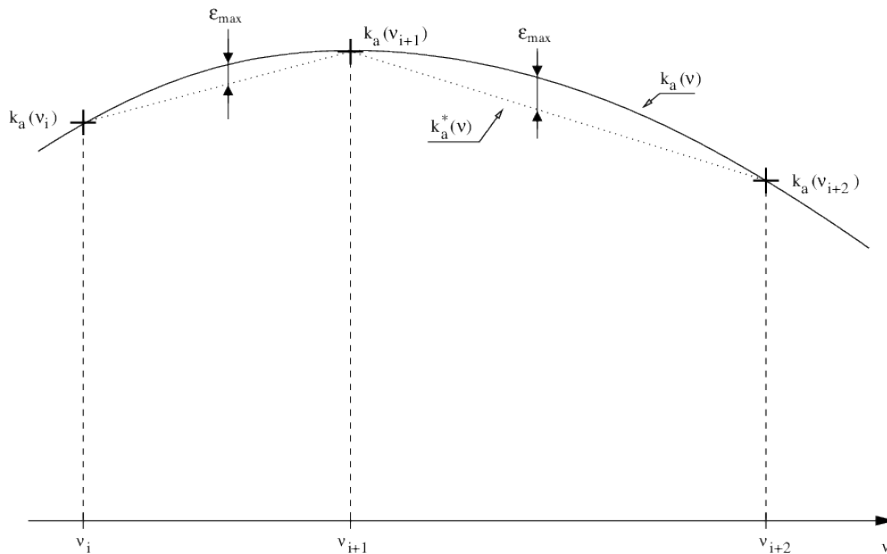


Figure 1: Schematic representation of the computed  $k_a(\nu_i)$  spectrum, and of the maximal error made when considering a linear variation  $k_a^*(\nu)$  between two consecutive computed result points.

be taken as  $k_{a,l}(\nu)$ , for every value  $\nu \in [\nu_{min}, \nu_{max}]$ , with a total relative error over  $k_a(\nu)$  that will be lower than  $\epsilon_1$ .

The second accuracy constraint ( $\epsilon_2$ ) will be used for optimizing the spectral discretization: schematically, narrowband intervals  $[\nu_{min}, \nu_{max}]$  will be discretized in such a way that line centers are well described. Discretization steps will take greater values in line wings. The computation of the spectral grid uses a tabulation of the Lorentz and Voigt functions. The method is explained below for a Lorentz line profile.

For an isolated Lorentz line, we have:

$$f_L = \frac{\gamma_L}{\gamma_L^2 + (\nu - \nu_c)^2} \quad (2)$$

with  $\gamma_L$  the Lorentz line width, and  $\nu_c = \nu_0 + \delta.P$  the (corrected) wavenumber at line center.

This function can be written as:

$$f_L = \frac{1}{\gamma_L} \frac{1}{1 + x^2} \quad (3)$$

with  $x = \frac{\nu - \nu_c}{\gamma_L}$ . Next, function  $f(x) = \frac{1}{1+x^2}$  has been tabulated in order to determine a series of triplets  $[x_1, x_2, x_3]$  such that for any value  $x_0 \in [x_1, x_2]$ ,

the maximum relative difference between  $f(x)$  and  $f^*(x) = f(x_0) + \frac{f(x_3)-f(x_0)}{x_3-x_0}(x-x_0)$  (defined for  $x \in [x_0, x_3]$ ) never exceeds  $\epsilon_2$ . Figure 2 may help.

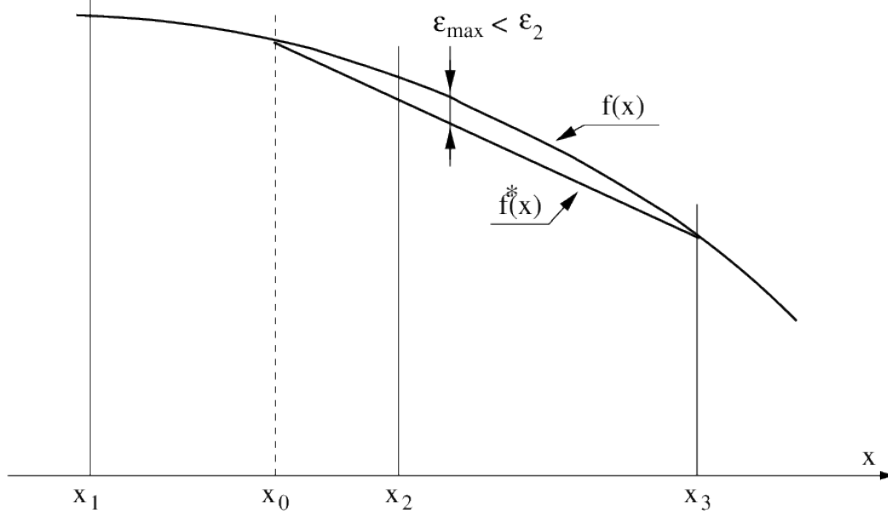


Figure 2: Purpose of tabulating function  $f(x)$ : for any  $x_0 \in [x_1, x_2]$ , the maximum relative difference between  $f$  and  $f^*$  is lower than the imposed value  $\epsilon_2$ .

In practice, for the computation of the spectral grid: starting from a wavenumber value  $\nu_i$ , the algorithm will have to determine the next grid point  $\nu_{i+1}$  (see Fig. 1). For every line  $l$  whose center wavenumber is within  $[\nu_{min}, \nu_{max}]$ , the code will have to identify the triplet  $[x_{1,l}, x_{2,l}, x_{3,l}]$  so that  $x_{i,l} = \frac{\nu_i - \nu_{c,l}}{\gamma_{L,l}} \in [x_{1,l}, x_{2,l}]$ . We know that the position of the next grid point could safely be taken at  $x_{3,l}$ , if line  $l$  was alone. Taking the minimum value  $\nu_{i+1} = \min(\nu_{i+1,l} = \gamma_{L,l}x_{3,l} + \nu_{c,l})$  (over all lines present in the interval) ensures that the relative difference between  $k_a$  and  $k_a^*$  never exceeds  $\epsilon_2$  over  $[\nu_i, \nu_{i+1}]$ .

The principle is exactly the same for the Voigt function  $f_V(\nu) = \sqrt{\frac{\ln(2)}{\pi}} \frac{1}{\gamma_D} \frac{y}{\pi} \int_{-\infty}^{+\infty} \frac{e^{-t^2}}{y^2 + (x-t)^2} dt$ , with  $x = \sqrt{\ln(2)} \frac{\nu - \nu_c}{\gamma_D}$ ,  $y = \sqrt{\ln(2)} \frac{\gamma_L}{\gamma_D}$ , and  $\gamma_D$  the Doppler linewidth. This function depends on  $y$ , the ratio of Lorentz and Doppler linewidths. This function will therefore have to be tabulated as a function of  $x$ , but also as a function of  $y$ .

I really don't see the point in giving any more details. If anyone ever reach this point without falling asleep and reads this, please send me an email at: vincent.eymet@meso-star.com

A special mention should be made tough to the issue encountered for

meshing the spectral grid between close strong lines. In the case  $\nu_i$  is located between two strong lines, the value of  $\nu_{i+1}$  computed by the above-described algorithm may be too far from  $\nu_i$  to satisfy accuracy criterion over  $\epsilon_2$ , because of the strong overlap between the two lines. In this case, a special treatment should be applied for a correct discretization of wavenumbers.

## 2.2 Range of applications

KSPECTRUM is currently using the following LBL databases: HITRAN (2004 and 2008) [1, 2], HITEMP (2004) [3] ( $H_2O$ ,  $CO_2$ ,  $CO$  and  $OH$  only), HITEMP (2010) [4] ( $H_2O$ ,  $CO_2$ ,  $CO$ ,  $NO$  and  $OH$  only) and CDSO [5] ( $CO_2$  only). The code uses the HITRAN database for temperatures lower than a user-defined temperature “T\_hitemp” (defined in the “data.in” file, see section /refpara:userfiles). For temperatures greater than this value, it lets the user chose between HITEMP or CDSO for  $CO_2$  lines, and will automatically use HITEMP for  $H_2O$ ,  $CO$  and  $OH$  transitions. The temperature upper limit of validity of the present code is therefore the same as the HITEMP database (about 1000K), except when computing the spectrum of a pure  $CO_2$  atmosphere: the CDSO database is supposed to be accurate up to 3000K.

No physical limit is imposed for pressures. However, the upper limit in terms of pressure is probably what is found at ground level on Venus: ground pressure is 92 bars, and ground temperature is 735K. At such levels of pressure and temperature, the atmosphere is in super-critical thermodynamic state, and can no longer be considered as a mixture of gas. Therefore KSPECTRUM should probably not be used for a pressure greater than 100atm. The lower pressure limit will be imposed by the code itself, and more specifically by the spectral discretization algorithm. It may crash for values of the pressure lower than  $10^{-7}$  atm, because spectral lines are so narrow that wavenumber steps are really small ( $\approx 10^{-7} cm^{-1}$ ). Besides the fact that the computation of the spectral grid may take a lifetime in these conditions, such small wavenumber steps may not be properly taken into account by the algorithm.

In terms of molecules, the HITRAN database takes into account the transitions of 42 (for the 2008 version) molecular species, along with their isotopes. The list of molecules can be found in the HITRAN documentation [1], or directly in the “data/molparam.txt” file.

Other limits may be imposed for specific gas mixtures. See section 2.3 for more details.

## 2.3 Physical hypothesis

This section presents how we manage the fact that there is a lack of available spectroscopic data for various aspects of the theory.

### 2.3.1 Sub-lorentzian profiles and CIA

The main issue is that we have very little knowledge about:

- The real line shape, for each molecule, at each wavenumber. We know that  $CO_2$  lines have a sub-lorentzian behavior in line wings, which is why thermal infrared signals can be transmitted from ground level up to space in very specific near-IR spectral windows through the otherwise very thick atmosphere of Venus.
- Collision-induced absorption (CIA), that are mainly due to the fact that in high pressure and/or high temperature conditions, collisions between molecules temporarily create new molecular species, with their own energetic transitions.

Sub-lorentzian profiles have been studied since 1969: in [6], the Lorentz profile  $f_L(\nu - \nu_0)$  is corrected by a function  $\chi(\nu - \nu_0)$  that accounts for the sub-lorentzian nature of the lineshape. Function  $\chi(\nu - \nu_0)$  is given for pure  $CO_2$  and for mixtures of  $CO_2$  and other species ( $N_2$ ,  $He$ ,  $Ar$ ,  $O_2$ ,  $H_2$ ) in very specific spectral ranges, for various values of the temperature. In [7] and [8], function  $\chi$  is given respectively for pure  $CO_2$  and for  $CO_2$  broadened by  $O_2$  and  $N_2$ , in the  $4.3 \mu m$  region, for different temperatures. It was then shown in [9] that function  $\chi$  is asymmetric (with respect to  $\nu_0$ ) for  $CO_2$  in the  $4.3 \mu m$  region, at 296K.

Finally, Perrin and Hartmann [10] and Tonkov et al. [11] provide  $\chi$  functions for pure  $CO_2$ , respectively in the  $4.3 \mu m$  region, for  $T \in [190 - 800]K$  and in the  $2.3 \mu m$  region, at 296K. These results are used in KSPECTRUM in order to compute  $\chi$  profiles. Various options (see section 4) let the user chose whether  $\chi$  functions from the literature must be used in their strict range of validity, or if they have to be used in different spectral ranges / for other molecules than  $CO_2$ .

Collision-induced transitions are even more difficult to take into account: there are some measurements from Tonkov et al. [11] in the  $2.3 \mu m$  region, at room temperature. Central wavenumbers and intensities are given for 8 transitions, but the authors clearly state that the data they provide should be considered with caution, because of the large uncertainties of their measurements/computations. Other measurements of  $CO_2$  CIA have been reported



in the literature: [12, 13, 14, 15]. Data (lines central wavenumber and intensity) are either not provided, or given with poor accuracies, or provided in a very limited range of validity (in very specific spectral regions, for only one value of pressure and temperature, etc). Practically, it is not possible to use literature results to take into account collision-induced (or pressure-induced) absorption lines properly.

The only results that could practically be used for computing  $CO_2$  CIA is the work from Gruszka and Borysow [16]. In addition to the paper, the authors provide a fortran computer code [17] that will compute CIA for  $CO_2$ , in the  $0-250cm^{-1}$  wavenumber range, in the 200-800K temperature range (this was motivated by studies of Venus' atmosphere, since CIA is a dominant source of opacity in the far-infrared (between 0 and  $550cm^{-1}$ ) on Venus' atmosphere [18] where temperature reach 735K at ground level). This code has been modified (for computing CIA coefficient for only one value of  $\nu$ ) and integrated into KSPECTRUM <sup>1</sup>. CIA of  $CO_2$  will therefore accurately be taken into account within these validity ranges. Options (see section 4) allow the use of CIA computation outside these validity ranges. In particular, the 2.3 and  $4.7\mu m$  spectral bands of  $CO_2$  are not taken into consideration.

### 2.3.2 Broadening by the rest of the gas

Another limitation of the code is the hypothesis that is done concerning  $\gamma_{other}$ : lines of a given species  $i$  can be broadened by collisions with the same species  $i$ , or by collisions with other species  $j$ . The self-broadened half-width  $\gamma_{self}$  given by LBL databases, and that account for collisions between molecules of the same species, can be considered as reliable. However, LBL databases also give us parameter  $\gamma_{air}$ , the air-broadened half-width, that corresponds to the broadening of lines by collisions between species  $i$  and... the air on the terrestrial atmosphere !

Of course, when computing a spectrum for a non-terrestrial atmosphere, parameter  $\gamma_{other}$  should not take the value of  $\gamma_{air}$  indicated in LBL databases, because the rest of the gas is no longer Earth' air. However, we have no other choice than taking  $\gamma_{other} = \gamma_{air}$ , because there are no other data available. This choice can be justified by the fact that  $\gamma_{other}$  will probably never be very different from  $\gamma_{air}$  anyway.

---

<sup>1</sup>Note that M. Gruszka's code is not supposed to be redistributed. However, the authors mention that the code can be used in academic applications, such as KSPECTRUM .

### 2.3.3 High-temperature transitions

We know that (a large number of) new transitions are activated at high temperatures. The CDSDB database offers a solution for  $CO_2$  lines: it is valid up to 3000K [5]. A new HITEMP database is in preparation, that should cover a huge number of high-temperature transitions for  $H_2O$ . More generally, the accuracy and range of application of public LBL databases is clearly increasing. However, the accuracy of spectra computations always depend on the available LBL parameters. The current level of knowledge will always impose a limitation on the accuracy of numerical simulations.

WARNING: there are some inconsistencies within the current HITEMP database: some values of the  $\gamma_{self}$  parameter are null ! This is an issue because, in the case you want to produce a high-resolution spectra for a single molecular species, only this parameter will be taken into account in the computation of the Lorentz line width  $\gamma_L$ . A null  $\gamma_{self}$  will result in a null value for  $\gamma_L$ , and this will end in a crash of the code during spectral discretization. The spectral discretization algorithm has been improved in order to detect null values of  $\gamma_{self}$ ; in this case, instead of using a null value, the  $\gamma_{self}$  parameter will be set to the closest non-null value found among the LBL database.

## 2.4 A better respect of spectroscopy

The general idea of KSPECTRUM is to ensure the simple accuracy criterion that are discussed in section 2.1. In order to achieve this for any situation (gas mixture composition, values of temperature and pressure), it is absolutely necessary that the coding is well separated from the physical problem. In particular, the available computing power should not impose limitations on the versatility of the code. We believe this is possible with to-days mass-computing power.

### 2.4.1 (no) line selection

Existing computation codes that can produce high-resolution spectrum always involve line selection at some point. The purpose of selecting lines is to reduce the total computation time, by reducing the number of lines  $N$  whose contribution has to be computed at each wavenumber point  $\nu$  (see Eq. 1).

However, KSPECTRUM does not need to select lines that have to be taken into account: the contribution of all transitions are effectively computed. See section 2.1 for details (accuracy parameter  $\epsilon_1$ ).

### 2.4.2 (no) truncation of lines and “continuums”

In the same manner, line profiles are not truncated as they probably would in a classical approach: the contribution of each line at each wavenumber  $\nu$  is computed, no matter how far from the line center  $\nu$  is. This is also a direct consequence of the way accuracy parameter  $\epsilon_1$  is taken into consideration.

KSPECTRUM does therefore not need to use a “continuum” that is classically added to the computed spectrum to correct line truncation side-effects. Values of  $k_a(\nu)$  are computed with a specified relative accuracy  $\epsilon_1$ .

2008/12/09 update: this is no longer completely true, since I have enabled a line profile truncation possibility in the code (see section 4.1, end of “options.in” description). This option should be used with great care, since it is most probable that very intense and distant lines will not be taken into account when truncating line profiles.

## 2.5 Parallel computing

Because of accuracy requirements that are imposed, computation times could be prohibitive on a single-processor machine. KSPECTRUM has been designed for running on multi-processor machines / clusters. It uses MPICH instructions so that multiple processes can be run at the same time. The four time-consuming loops of the code have been parallelized. As communication times between processes are negligible (compared to computation times), the total computation time will effectively be divided by the number of processors KSPECTRUM is running on (provided that all processors / machines in the cluster run at the same speed and are free of other time-consuming processes.)

Of course, this means MPICH has to be installed before using the code. See section 3.4 for installing MPICH / creating a cluster of machines.

## 2.6 The multi-pass approach

We are now talking about the limitations of fortran 77, which has been used for coding KSPECTRUM. The source code is constantly checked against array overflows, unused or uninitialized variables, etc (classical programming errors), and there should be no problem of bad coding. However, one limitation of fortran 77 is that the size of each array has to be declared. And in the present case, the most obvious limitation is the size of the arrays that hold the LBL data. For a typical atmosphere (Earth, Venus), less than 10 molecular species have to be taken into account, which gives a total number of lines of approximately  $2 \cdot 10^5$  when using the HITRAN LBL database.

However, when using the CDS database for  $CO_2$  lines, the number of lines that have to be taken into account can exceed  $10^7$ . And there is no way 9 arrays of size  $10^7$  can be declared on a classical machine that holds 1GB RAM (KSPECTRUM actually needs to read 9 LBL parameters from databases, which imposes the declaration of 9 data arrays). The default size of these arrays is  $2 \cdot 10^6$ , and can be reduced for low-memory configurations (see section 3.2).

With such a limitation, the only way several millions of lines can be taken into account is to perform a multi-pass computation: for instance, when the user specifies the use of the CDS database for  $CO_2$  transitions, 10 millions lines have to be taken into account (for  $CO_2$  only). With an array size of  $10^6$ , KSPECTRUM will read the first  $10^6$  lines (first pass), and perform the computation of the  $k_a(\nu)$  spectrum with these first set of lines (it will actually compute the contribution of this first million of lines to the final result). Then it will perform a second pass, using the second million of lines in the database: it will compute the contribution of the second million of lines to the final result. And so on, until all lines have been taken into account.

An attentive reader could tell me this approach is incorrect if applied to the spectral discretization. Indeed, in order to compute a correct spectral grid for any  $[\nu_{min}, \nu_{max}]$  narrowband spectral interval, the algorithm needs to take into account ALL the lines whose central wavenumber is within  $[\nu_{min}, \nu_{max}]$ . When reading chunks of LBL database, it is obvious that line parameters are missing for many  $[\nu_{min}, \nu_{max}]$  intervals. This is the reason why the spectral discretization algorithm does not use the multi-pass approach: it automatically looks into every LBL database file to identify relevant line parameters for each  $[\nu_{min}, \nu_{max}]$  interval (in practice, a complete parsing of LBL data files is necessary in order to accelerate the process of line identification). This is also why LBL data files must be readable by any KSPECTRUM process (see section 3.5).

Finally, we should mention that the total computation time for a multi-pass computation is not higher than for a 1-pass computation, since all lines have to be taken into account anyway. The spectral discretization is performed during the first pass and is known for subsequent passes, which does not increase the total computation time. The main advantage of this multi-pass approach is the possibility to run the code on low-memory configurations.

## 2.7 Estimation of remaining computation time

When using the multi-pass approach, the code will be able to guess the remaining time before the computation of a spectra is finished for the current

atmospheric level. This is only possible for a multi-pass computation, because in order to have an estimation of the remaining computation time, the code needs to know the spectral grid (that is computed during the first pass of each atmospheric level), and how many points of the grid have already been computed. The “status.txt” file will report the estimated time (in real-life date/hour format) when the computation for the next atmospheric level is going to start.

## 2.8 Not starting from scratch after a crash

Imagine you want to compute the spectrum of a given atmosphere mainly composed of  $CO_2$ , using the CDS database, over 80 atmospheric levels, for the whole infrared range. This should typically require several weeks of CPU time, even for a multi-processor machine or a small-size cluster. If you run KSPECTRUM on a dedicated multi-processor machine, if no one else has access to this machine, and if there is no power cut during all the computation, there should be no problem. Now imagine you run it on a PC cluster, with many other users that daily access these machines. Someone will eventually reboot one of these machines, crashing your whole computation. I would say that you can not decently expect more than 48 hours between two consecutive reboots. In these conditions, the computation will never end.

Fortunately, KSPECTRUM can resume a computation if a crash has been detected. It will start over from the last backup point, which occurs every time the computation of the spectrum has been achieved on a given narrowband interval. Multi-pass computations will be resumed as well.

## 2.9 Automatic tabulation of Lorentz and Voigt functions

Section 2.1 presents the principle of the spectral discretization algorithm used in KSPECTRUM. It needs a tabulation of the Lorentz and Voigt functions. These tabulations depend on the value of  $\epsilon_2$ , the user-defined accuracy that is required over the spectral grid. Tabulation files reside within the “data” directory, and are indexed according to the value of  $\epsilon_2$ : for instance, “data/tabulation\_lorentz0.01.txt” is the file where  $[x_1, x_2, x_3]$  triplets have been recorded for the Lorentz function, and for an accuracy  $\epsilon_2 = 0.01$  (a 1% uncertainty).

Values of  $\epsilon_1$  and  $\epsilon_2$  may be changed by the user (see section 4.1). If the user specifies a value of  $\epsilon_2$  for which there is no known file, KSPECTRUM will have to perform the tabulation prior to start the spectrum computation. Of

course, the code will record tabulation results in the appropriate file, so that the tabulation for this value of  $\epsilon_2$  will never have to be performed again. This tabulation is performed by a fully parallel loop, so that it can benefit from the number of processors KSPECTRUM has been launched on.

## 3 Installation and prerequisites

### 3.1 Tweaking the “Makefile”

Before compiling, you will have to find out what compilation options are right for your compiler, and your machine. Open the “Makefile” file, and look at variables “FOR”, “ARCH” and “OPTI”. Variable “FOR” is used to specify your fortran 77 compiler. As KSPECTRUM uses MPICH, you will most likely use the “mpif77” compilation command, that has been installed along with MPICH.

Variable “ARCH” is used to specify machine architecture. “-m486” is probably a good choice for a PC running a 32bits linux. Use the documentation of your fortran compiler to find out what architecture option you can use.

Variable “OPTI” is used to specify code optimization options. The default options should be enough. Please note that you definitely must use option “-Wno-globals” for compiling parallel code.

You might also want to set variable “DEBUG” (look for its definition in the file). You can expect faster execution times if you leave it empty.

### 3.2 Setting up array sizes

As explained in the previous section (see 2.6), one limitation of fortran 77 code is that you must define array sizes before compilation. Arrays sizes used by the present code are defined within the “includes/max.inc” file. You should at least look at it before compiling, and more precisely at the value of variable “Nline\_mx”. Its default value is 2000000 ( $2 \cdot 10^6$ ), because most machines will be able to compile KSPECTRUM with this value (you need at least 1GB RAM). You can enable a lower value if you do not have enough memory. The code will then perform a multi-pass computation (see section 2.6), but total computation time will not be increased.

### 3.3 Compilation

Once you checked compilation options and array size definitions, you can use the **make all** command in order to compile the executable file.

If compilation fails, use the compiler error message to determine what went wrong. The most probable error causes are: a bad definition of architecture compilation option, or an inappropriate value in code optimization options.

If you ever need to modify the source files (in directory “source”), you can quickly recompile the code using **make all** again. This will only recompile the modified source files, and link objects files in order to produce the new executable file.

If you have to modify the value of any variable defined in includes files (directory “includes”), you will have to recompile the whole code from scratch. Use the **make clean all** command to erase all objects files, and then recompile them properly.

Odd errors may happen if you change an include file and then recompile using only the **make all** command (old value of the modified variable will remain in the unchanged object files).

### 3.4 Installation of MPICH

If you do not already have MPICH installed on the machine / group of machines you want to run KSPECTRUM on, you will first have to download mpich2 from <http://www.mcs.anl.gov/research/projects/mpich2> ; make sure you download the latest version. Next, untar the downloaded archive, and install it on every system that will be part of your cluster:

```
./configure --prefix=/path/to/installation/directory  
make  
make install
```

Before running the MPD daemon, you must create a “.mpd.conf” file in your home folder:

```
echo secretword=[secretword] >> /.mpd.conf  
chmod 600 .mpd.conf  
using any “secretword”.
```

Next, you will need to be able to connect via ssh to every other machine of your cluster, with no password request. For this, you must first create a DSA key:

```
ssh-keygen -t dsa
```

leaving all fields blank (use the “enter” key to answer each question).

Then you will have to add this DSA key to the list of authorized keys:

```
cd .ssh  
cat id_dsa.pub >> authorized_keys
```

Finally, create the list of machines that belong to your cluster. This list must reside within the “mpd.host” file on your home folder. Each line must contain the name of the machine, by order of availability:

```
[host1].[domain]  
[host2].[domain]  
[host3].[domain]
```



etc

You can then try to run the MPD daemon:

**mpdboot -n [#]**

with [#] the number of hosts you want to run MPD on (typically, the number of machines in your cluster). If you encounter no error, you can use command “mpdtrace” to check the number of hosts the MPD daemon is running on. This should give you the list of machines in your cluster.

Alternatively, you can use OPENMPI instead of MPICH. Installation is easier, you do not have to create a “.mpd.conf” file, and the MPD daemon does not have to be started (mpdboot) prior to code execution. Program-mation instructions are fully compatible.

### 3.5 Installation of LBL databases

KSPECTRUM needs to access LBL databases in order to run. LBL databases are not provided with the code, you will have to download them. These databases can be found on FTP servers:

- HITRAN & HITEMP: <ftp://cfa-ftp.harvard.edu>
- CDSO: <ftp://ftp.iao.ru>

You should first connect to either of these FTP sites in order to locate the top-level directory for the required database (probably somewhere in /pub )

If you are using MacOS, it is possible to use the ”Go/Connect to server” option within the Finder. Use ”anonymous” as login, and your e-mail address as password. Then just ”copy” and ”paste” the top-level directory address.

It is also possible to use **wget** if you can only use command-line tools (for instance, if you try to access ftp sites from a remote machine); the example command line below is given for HITEMP-2010:

**wget -drc -user=anonymous -password=[your\_email\_address] ftp://cfa-ftp.harvard.edu/pub/HITEMP-2010 .**

This will literally download the whole “HITEMP-2010” directory right into the directory where this command was issued.

The code expects to find LBL databases in the “data” directory. Of course, you have to download LBL databases in a directory that is common to all machines the code will run on (shared disk), so that each process will be able to access the LBL databases through the “data” directory.

LBL data file directories must be the following:

- “data/HITRAN2004”: must contain the uncompressed by-molecule HITRAN data files in its 2004 version. If you create a link, it must

point to the “HITRAN2004/By-Molecule/Uncompressed-files” directory on the local disk of each machine. When the code is set to use the HITRAN2004 database (see “options.in” in the 4.1.2 section), this folder must exist within the “data” folder.

- “data/HITRAN2008”: must contain the uncompressed by-molecule HITRAN data files in its 2008 version. If you create a link, it must point to the “HITRAN2008/By-Molecule/Uncompressed-files” directory on the local disk of each machine. When the code is set to use the HITRAN2008 database (see “options.in” in the 4.1.2 section), this folder must exist within the “data” folder.
- “data/HITEMP”: must contain the old HITEMP database uncompressed data files. If a link, it must point to the “HITEMP/uncompressed\_data” local directory.
- “data/HITEMP-2010”: must contain the new (2010 version) HITEMP database. Within this folder, you must have 5 folders named “CO2\_line\_list”, “CO\_line\_list”, “H2O\_line\_list”, “NO\_line\_list” and “OK\_line\_list”. Within each one of these directories, you must create two other directories: one named “Compressed\_files” that contains original compressed data files (\*.zip files) and a second one named “Uncompressed\_files” that contains un-zipped files (\*.par files) for the molecular species. Upper / lower case matters, the code will look into this directory structure as mentioned in this section.
- “data/CDSO”: must contain CDSO uncompressed data files. If a link, it must point to the “CDSO\_1000\_UPDATED/uncompressed\_data” local directory.
- “data/CDSO-HITEMP”: must contain CDSO-HITEMP uncompressed data files.
- “data/CDSO\_4000”: make it a link (preferably) to a folder that contains every single one of the 2768 uncompressed LBL files for the 4000K version of CDSO. This version of the database holds information for more than 628 millions of transitions, and the total weight of the database is 73 Gb once uncompressed (23 Gb for the compressed files that can be downloaded from the FTP site). The files in this folder should not be renamed: their names are “cdsd\_00220\_00230”, “cdsd\_00230\_00240”, “cdsd\_00240\_00250”, etc. You will have to find a way to unzip every zipped file that has been downloaded, using for instance a base script like this one:

```

1 #!/bin/bash
2 # TARGET is the folder containing target files (i.e. zipped files)
3 TARGET=$HOME/lab_data/CSDS_4000/compressed_files
4 # RESULT is the folder containing resulting files (i.e. unzipped files)
5 RESULT=$HOME/lab_data/CSDS_4000/uncompressed_files
6
7 if [ ! -d "$TARGET" ]
8 then
9 echo 'TARGET folder does not exist:'
10 echo $TARGET
11 exit 1
12 fi
13 if [ ! -d "$RESULT" ]
14 then
15 echo 'RESULT folder does not exist:'
16 echo $RESULT
17 exit 1
18 fi
19
20 for FILE in $TARGET/*.zip
21 do
22 echo 'Now unzipping file: '$FILE
23 unzip "$FILE" -d $RESULT
24 done
25 exit 0

```

In practice, let's say you have downloaded and unzipped the 2008 version of the HITRAN database somewhere on the local disk of the machine you want to use for your computation. KSPECTRUM will need the “by-molecule” data files that are provided with HITRAN. For instance, you have these files in the following folder:

```
$HOME/LBL_databases/HITRAN/HITRAN2008/By-Molecule/Uncompressed-files/
```

On the other hand, KSPECTRUM is installed in the following folder:

```
$HOME/great_codes/kspectrum1.2.0/
```

In order to let KSPECTRUM know where the by-molecule data files of the HITRAN2008 database are located, go to the “data” folder:

```
cd $HOME/great_codes/kspectrum1.2.0/data
```

and create a symbolic link called “HITRAN2008” to the folder that contains the data files:

```
ln -s $HOME/LBL_databases/HITRAN/HITRAN2008/By-Molecule/Uncompressed-files/ ./HITRAN2008
```

Here you go. You have just installed the HITRAN2008 database in KSPECTRUM. You can do the same for the 2004 version of HITRAN if you want to use it (you can select which database you want to use by setting the right option in the “options.in” file, see section 4.1.2) and for the HITEMP and CSDS databases.

Frequent updates are published about HITRAN data. If you want to use these new data files, follow these directions: let's say you want to download the update for SO<sub>2</sub> from the HITRAN website (section "HITRAN updates"). Download the updated file "09\_hit09.par" within the folder that contains your by-molecule data files. KSPECTRUM will still look for files that are labelled "08", so you will have to link the new file to the old one: within the by-molecule data folder, rename the old SO<sub>2</sub> file:

```
mv 09_hit08.par 09_hit08.par.ori
```

Then create a link from the new file to the old one:

```
ln -s 09_hit09.par 09_hit08.par
```

Repeat this step for every update file.

Finally, there is also supplemental data, that is not directly provided among the "by-molecule" data. These files reside within the "HITRAN2008/Supplemental" folder. There are currently three data files within this "supplemental" folder: "30\_hit08.par", "35\_hit08.par" and "42\_hit08.par". In order to add them to your "by-molecule" folder, you can just copy/paste them, or once again create symbolic links (does not take more disk space); within your "by-molecule" data folder, type the following commands:

```
ln -s ../../Supplemental/30_hit08.par .
```

```
ln -s ../../Supplemental/35_hit08.par .
```

```
ln -s ../../Supplemental/42_hit08.par .
```

## 4 Using the code

### 4.1 User input files

There are two files in the main KSPECTRUM folder: “data.in” and “options.in”. The “options.in” file is where the user can choose between several options, for each algorithm. The “data.in” file is where the user can specify the numerical values of a number of variables the code will use. Below is a description of these two files.

#### 4.1.1 The “data.in” file

- Section “Production of k spectrum”: the user must specify the values of  $\epsilon_1$  and  $\epsilon_2$  (see section 2.1). Default values are 1%.
- Section “Narrowband discretization”: the user can specify the minimum and maximum values of the wavenumber range the spectrum will be computed for, and the maximum error percentage over the Planck intensity for discretization of the wavenumber range into narrowband intervals. These data should be specified only if the user chose to compute the narrowband discretization instead of using pre-defined narrowband intervals (via an option in the “options.in” file). Refer to the description of the corresponding option for more details. Finally, the user should specify the value of the constant spectral step to use (when required in “options.in”).
- “Parallel computing”: the user should specify the number of chunks the code will use for the computation of the k spectrum. Once the spectral grid is computed, the code knows the number of k values that will have to be computed. The computational load that will be sent to each process is the number of k values divided by the number of chunks. If this number of chunks is large, each process will have to compute a small number of k values. A chunk will be sent each time a process is found idle. The advantage is that if processors run at different speeds / have to run other processes, processes that run on slow processors will be sent a lower computational load (fewer chunks), and processes that run on fast processors will be sent a greater number of chunks.
- Section “Levels and narrowbands limits”: first, the high-temperature level has to be indicated; this value is used to switch between HITRAN (at low temperatures) and HITEMP or CDSO (at high temperatures). By using a high value (higher than the highest value of temperature

you want to compute spectrum for) you can be sure only HITRAN is used. The user can then specify the indexes of the first and last atmospheric level / narrowband interval if only a limited number of atmospheric levels / narrowband intervals should be treated instead of every atmospheric level / narrowband interval. The choice itself is done via the corresponding option.

- Section “Special options for degraded mode”: the user should provide here values the code will use when running into degraded mode. Three values are used for the degraded spectral discretization algorithm (number of line widths to consider in the definition of a line’s central zone, the number of points used to discretize lines central zones and the number of points used to discretize regions between lines). The next parameter is the minimal distance (from current value of  $\nu$ ) to the central wavenumber of each transition that is used for line profiles truncation. Then the user should provide the percentage of transitions (in terms of reference line intensities) that will be neglected by the reference spectral discretization algorithm.

One last value is the value of  $\epsilon_c$  used by the “convergent-k” algorithm (see “options.in”): when this algorithm is enabled, transitions are sorted according to their intensities, and the contribution of most intense lines are added first when computing  $k(\nu)$ . The algorithm will regularly update and check the evolution of  $k(\nu)$ : this history is expressed as successive values of  $\alpha_i = \frac{k_i(\nu)}{k_n(\nu)}$  with  $k_i(\nu)$  the successive values of  $k(\nu)$  that have been recorded, and  $k_n(\nu)$  the current value of  $k(\nu)$  (the last recorded value). Convergence is reached once  $\alpha_n - \alpha_{n-1} < \max(\alpha_i - \alpha_{i-1}) * \epsilon_1 * \epsilon_c$  with  $\epsilon_1$  the maximum error percentage allowed over  $k(\nu)$  and  $\epsilon_c$  a value that provides the user a mean to control this convergence criterion.

#### 4.1.2 The “options.in” file

- Section “Narrowband discretization”: the user can chose between computing automatically the narrowband discretization or use pre-defined narrowband intervals. If the narrowband discretization has to be performed by the code, it will use the three corresponding values in the “data.in” file (section “Narrowband discretization”): the specified wavenumber range will then be discretized into a number of narrowband intervals, and the Planck intensity relative variation between the limits of each narrowband interval will not exceed the specified maximum er-

ror percentage over Plank intensity. If the user decides to use a pre-defined narrowband discretization, a file called “narrowbands.in” must be found in the “data” directory. This file should contain the number of narrowband intervals, and the wavenumber limits of each interval. See the provided “data/narrowbands.in” example file.

- Section “Choice of spectroscopic database”: A first option makes possible to use custom LBL databases (parts from existing databases for instance). The corresponding LBL files have to be written using the HITRAN format. These files must reside within the “data/custom\_LBL” folder, and must be named according to the molecular species the transitions they contain belong to, for instance “custom\_H2O.txt” or “custom\_CO2.txt”.

When custom LBL databases are not used, the user has to decide whether the default HITRAN database to use is the 2004 or the 2008 version; the corresponding link must be established within the “data” folder (see section 3.5). The user can then choose between the CDS-1000, the CDS-1000-updated, the CDS-HITEMP or the CDS-4000 databases for  $\text{CO}_2$  and between HITEMP (old version) or HITEMP-2010 for  $\text{H}_2\text{O}$ , for a temperature greater than “T\_hitemp” (whose value was set in the “data.in” file).

- Section “Composition”: the user should specify whether the code will use only the main isotope or all isotopes when the concentration of isotopes are not specified for a given molecule.
- Section “Line profiles”: first, the user can select to use either the Lorentz or the Voigt line profile; the user has then to chose whether or not the sub-lorentzian nature of lines has to be taken into consideration. See section 2.3 for more information about how the code will manage sub-lorentzian profiles. In particular, function  $\chi$  is given for pure  $\text{CO}_2$  only, in specific spectral ranges, and for a limited range of temperature. The user can chose to use literature data outside its range of validity (over the whole IR spectrum), and for other molecules than  $\text{CO}_2$  (use with great care !). Finally, the asymmetric nature of function  $\chi$  can be taken into account, but results will not be very different from using a symmetric function.
- Section “Collision-Induced absorption”: the use can chose whether or not collision-induced absorption (CIA) should be simulated for  $\text{CO}_2$ . See section 2.3. The user can subsequently choose CIA computation from the work of Gruszka [16] or Baranov [19] or both, in which case

both sources of opacity are added. The user can also chose to compute CIA coefficients outside the wavenumber validity range ( $0-250 \text{ cm}^{-1}$ ) and the temperature validity range (200-800 K).

- Section “Code behavior”: the user can chose to display or not computation times on screen. Finally, it should be specified whether the code has to resume an interrupted computation, or start again from the beginning.
- Section “Sensitivities”: the user can chose to compute sensitivities of results (cross-section and absorption coefficient) to total pressure, temperature and species concentrations. When computation of sensitivities are enabled, results are recorded in files “results/dk.dXXX”.
- Section “Levels and narrowbands limits”: the user must chose whether the code has to compute a spectrum for every atmospheric level / narrowband interval, or only for a limited number of levels / intervals. If a limitation is imposed, the code will use the corresponding values found in the “data.in” file (section “Levels and narrowbands limits”).
- Section “Spectral discretization algorithm”: the user should choose between the reference spectral discretization algorithm, a degraded spectral resolution, using a constant spectral step or using a spectral discretization based on line centers . Degraded resolution will compute the spectral grid faster than the reference algorithm, and will also make the computation of the spectrum faster since less points will have to be computed. However, the accuracy criterion  $\epsilon_2$  will not be satisfied by any other algorithm than the reference scheme. This degraded resolution algorithm takes input values (see “data.in”). When using the reference spectral discretization algorithm, the user should also provide the accuracy level that will use the special spectral grid algorithm for wavenumbers located between close strong lines. A value of 0 disables this special algorithm: wavenumbers  $\nu_i$  will be computed using the standard meshing algorithm based on Lorentz and Voigt functions tabulation, described in 2, but remember that in this case, the spectral grid may be too coarse between strong lines. A value between 1 and 4 will enable the special meshing algorithm. The highest the value, the more accurate this algorithm will be (there will be more values of  $\nu_i$ , therefore making the k-spectra computation longer). A value of 3 may be enough in most cases.
- Section “line truncation and selection”: the user has the ability to truncate line profiles at a fixed distance from line centers or for a multiple of



the line width (see “data.in”). When this option is used, the accuracy criterion  $\epsilon_1$  is no longer satisfied. Line truncation will make kspectrum computations much faster. When a truncation is required, the user has also the ability to set the contribution of constant lines to zero, so that absorption is null between very distant lines.

A last option enables weak lines rejection: in order to speed up calculations, the computation can be performed using only the stronger lines (those who have the highest intensities). This option enables the “convergent-k” algorithm that sorts lines according to their line intensity (computed at the current mixture’s temperature) and adds the contribution of intense lines first until the convergence criterion is reached. This criterion can be adjusted using the corresponding value in the “data.in” file.

## 4.2 Other input files

### 4.2.1 Atmospheric composition

is provided via the “data/composition.in”. This file must contain a label for the atmospheric composition (could be used in future version for planet-specific physics, such as sub-lorentzian profiles or CIA), the number of atmospheric levels, the number of molecular species, the label of each molecular species, and, for each atmospheric level: altitude in km (unused at present date), pressure in atm, temperature in Kelvin, and the molar fraction (or partial pressure) of each molecular species. See the example file.

Molecule labels have to be identical to labels used in the HITRAN nomenclature. Labels of molecules defined in the HITRAN database can be found in the “data/molparam.txt” file. They are obvious for most species: “H2O” is used for water vapor, “CO2” for carbon dioxide, etc. Please use capital letters when providing molecule labels in the “data/composition.in” file, and note that molecule labels must be provided between brackets (example: “[H<sub>2</sub>O]”) so that the code can identify molecular species.

### 4.2.2 Isotopologue abundances

For each molecular species that is provided in the “data/composition.in” file (i.e. molecules whose label is unknown from the HITRAN nomenclature), information has to be provided about these molecules in the “data/molparam.in” file. In particular, the abundance of each known isotopologue should be provided, for each (P/T) level. See the provided example produced by the program that can be found in the “data/make.composition.for”

source file.

One remark about isotopologues: when no isotopic abundance has been explicitly provided via the “data/molparam.in” file for a given molecular species, the algorithm can chose to take into account only the main isotope of this species, or use all isotopes whose line parameters are provided in LBL databases. The user can chose between both behaviors in the “options.in” file (see section 4.1.2).

### 4.2.3 Narrowband intervals

have to be provided in the “data/narrowbands.in” file, provided that the user chose to use a pre-defined narrowband discretization (see section 4.1). This file must contain the number of narrowband intervals, and, for each interval, its lower and upper limits, in terms of wavenumber (in  $cm^{-1}$ ).

## 4.3 Running KSPECTRUM using MPICH or OPEN-MPI

Once everything is installed and the executable file “kspectrum.exe” file has been compiled, you can try to run a computation. I would recommend that, for the first time, you run KSPECTRUM over a single atmospheric level, for a single narrowband interval, using a simple atmospheric composition (the provided example composition for instance).

Use the following command to run the code:

**mpirun -np [#] kspectrum.exe**

with [#] the number of processes that have to run.

Because communication times are small compared to computation times in KSPECTRUM , it is a good idea to chose a number of processes equal to the number of (physical) processors of your cluster, plus one. One process, the master process, is dispatching computational loads to every other processes (slave processes), and gathering results from them. It does not require any significant CPU time, therefore it is OK to have a number of slave processes equal to the number of processors, so that each slave process can use a processor (or each processor will have only one slave process running on it).

In practice, if your cluster is composed of n processors, you can use:

**mpirun -np n+1 kspectrum.exe**

## 5 Results

### 5.1 Results files

KSPECTRUM will produce results files in the “results” directory. There is one file per atmospheric level. Files are named “k\*\*\*” with “\*\*\*” the index of the atmospheric level. For instance, “results/k001” is the result file produced for the first atmospheric level (with the highest pressure level).

Each file contains 3 columns. The first column gives values of wavenumbers, in  $cm^{-1}$ . The second column is the total cross-section of the gas mixture (in  $cm^2/molecule$ ), at the corresponding wavenumber. The third column is the total absorption coefficient (in  $m^{-1}$ ) at the corresponding wavenumber.

### 5.2 More output files

Additionally, the user can check a number of log files produced by KSPECTRUM during its execution:

- “results/composition\_info.txt”: information returned by the algorithm that reads the atmospheric composition file and sets abundances for each molecular species. This file shows what molecules have been identified, the number of isotopes and their respective abundances. For each molecular species, the sum of abundances of all the isotopes should be equal to 1.
- “results/calculation\_info.txt”: various output information: values of accuracy criterion  $\epsilon_1$  and  $\epsilon_2$  are given, along with the gain from line classification: the total number of lines is printed, as well as the number of lines whose contribution has to be explicitly computed at each value of  $\nu$ . These are cumulated values (over each narrowband interval, over each atmospheric level). The difference is an estimation of the computation time gained by line classification (using criterion  $\epsilon_1$ ).

These two files should be saved together with spectrum result files in order to keep a record. In particular, file “results/calculation\_info.txt” will be needed when producing k-distribution data sets.

- “optimizations/LBL\_files”: shows which LBL data files have been read.
- “status.txt”: is continuously updated during computation. Some lines are appended to this file each time a backup is performed, i.e. when the computation of the spectra is over for a given narrowband spectral

interval. It shows the time the backup took place at, for what atmospheric level / narrowband interval, and how many values of  $k$  have been computed for this interval. When running a multi-pass computation, it can also display the predicted time/date when computation will be over for the current atmospheric level.

### 5.3 What's next ?

You can have multiple reasons to use KSPECTRUM :

- Produce your own high-resolution spectra, and use them as you wish.
- Produce a spectra database, that can later be used for interpolation purposes (we have a code for that).
- Perform high-resolution radiative transfer (often referred as line-by-line computations). We can provide example codes.
- Produce statistical spectral model parameters, for instance correlated- $k$  datasets. We have a code for that. And then you might want to perform radiative transfer computations from this correlated- $k$  data. We can also provide example codes.

In any case, do not hesitate to contact Mésostar: [contact@meso-star.com](mailto:contact@meso-star.com)

## 6 The fun stuff

### 6.1 Legal mentions

KSPECTRUM is distributed under the terms of the CeCILL license. This license is compatible with the GNU General Public License (GPL). See the COPYING file within the main directory.

Méso-Star ([www.meso-star.com](http://www.meso-star.com)) provides and distributes the sources of the present code. By using this software, you agree to make a reference to KSPECTRUM in any publication using results that have been obtained with it. Support for the present code is no longer free. If you need to adapt the code to your needs, for any computational request, or if you need to get training in order to use the code, please contact Méso-Star ([contact@meso-star.com](mailto:contact@meso-star.com)) and we will provide an estimation of our fees.

### 6.2 Questions and Answers

**I am in a big hurry, I don't want to read all that boring stuff, I just want my results, immediately.** KSPECTRUM is probably not what you want. Consider using online spectra production systems, such as <http://hitran.iao.ru/gasmixture/spectr> or <http://spectra.iao.ru/>

**I can't manage to compile the source code / I don't understand compilation error messages.**

There should be not problems using the gfortran compiler and mpich2 or openmpi. Send me an email with a description of the tools you are using, on what hardware/system, and what error messages you get: [vincent.eymet@meso-star.com](mailto:vincent.eymet@meso-star.com)

**Compilation was successful, but the code crashes.**

I know that when a code has been extensively used for years and all bugs have been patiently tracked, identified and corrected, there still remains a huge ugly bug for every 1000 lines of code. My code counts 20 klines of code. So yes, there may be a bug. Send me an email with the description of what you want to do, attach input files when possible.

**Error "Nkmx has been reached"** This is one of the most likely errors. You are probably trying to compute a spectra for a very low value of pressure, right ? There are a lot of very thin and isolated lines, the code takes ages to compute the spectral discretization, and then crashes with this error. This is because the number of wavelength the spectra should be computed for is too high. There are a number of ways to get around this issue:

- First, try to edit the "includes/max.inc" file, and to increase the value of variable "Nkmx", in order to allow more memory to spectral arrays.

You will have to recompile the code completely to take the modification into account: use “make clean” and then “make all” (or directly “make clean all”). Be very careful when increasing the value of “Nkmx”: if you do not increase it enough, the same error will happen again (not enough memory for spectral discretization). If you increase it too much, you will not be able to compile the code (not enough available memory on the system). The default value for “Nkmx” is  $10^5$ , you should first try to set it at a value of  $5 \cdot 10^5$ . Then increase it if the same error occurs again, until you reach the limit at which compilation and / or execution is impossible.

- If you are low in memory and you can not increase further the value of “Nkmx”, you can try to use a coarser spectral resolution or even a constant spectral step, by setting the appropriate options in the “options.in” file (within the “Spectral discretization algorithm” section).
- You can also try using smaller narrowband spectral intervals: Nkmx is the number of values of  $\nu$  a given narrowband interval will be discretized into, so using smaller narrowbands can make the discretization possible.
- If all the above suggestion failed, or you have the feeling there is another problem, feel free to contact me. When possible, send me your “composition.in”, “narrowbands.in”, “data.in” and “options.in” files with a description of the problem you encounter.

### **What about all this unknown spectroscopic data...?**

As mentioned in section 2.3, we know very little about: sub-lorentzian profiles, collision-induced absorption (CIA) lines, and broadening by the rest of the gas mixture. Hypothesis have been made: sub-lorentzian profiles are given in the case of pure  $CO_2$ , and in specific (spectral, temperature) ranges of validity. These limitations can be overridden by the user (see section 4.1.2). Broadening by the rest of the gas has been considered as if the rest of the gas mixture was terrestrial air, and CIA can be accurately simulated for  $CO_2$  only, in the  $0\text{-}250\text{ cm}^{-1}$  spectral range only.

I am aware this situation is not acceptable, since KSPECTRUM is supposed to be used for any gas mixture, in any spectral region, and in a wide range of thermodynamic conditions. However, such a code would require a good knowledge of all the missing data (sub-lorentzian profiles, CIA transitions and broadening by the rest of the gas mixture) for every molecular species, broadened by every other molecular species, for any spectral region, for every temperature and pressure level. The best I can propose is to improve the code for very specific applications, when the corresponding spectro-

scopic data is known. Please let me know your needs: [vincent.eymet@meso-star.com](mailto:vincent.eymet@meso-star.com)

A (not fully satisfying) solution can be found in the case you know well the CIA continuum you want to take into account, i.e. you know how to compute CIA opacities for your configuration, but it has not been included into KSPECTRUM : in this case, you should first compute your high resolution spectra without any CIA calculations. Once high resolution spectra without CIA have been computed, you can compute and add CIA opacities by yourself at each  $\nu$  point.

## A Appendix - Validation

KSPECTRUM results have been checked in various situations against other results.

### A.1 Low pressures / temperatures

Results from KSPECTRUM have been compared to line-by-line spectrum produced by P. Dubuisson (Laboratoire d'Optique Atmosphérique, Lille) [20, 21, 22, 23, 24] for Earth's atmosphere. Various compositions / spectral intervals have been considered:

- $H_2O$ ,  $CO_2$  and  $O_3$ , in the  $[748 - 752] \text{ cm}^{-1}$  range.
- $H_2O$ ,  $CO_2$  and  $O_3$ , in the  $[4900 - 5040] \text{ cm}^{-1}$  range.
- $H_2O$ ,  $CO_2$ ,  $O_3$  and  $CH_4$ , in the  $[4200 - 4240] \text{ cm}^{-1}$  range.

In each case, spectrum have been computed for 49 atmospheric levels, from ground level (1 atm, 292K) to  $2.878 \cdot 10^{-6}$  atm (0.29 Pa, 345K) at the top of the atmosphere.

Figures 3 to 5 represent both spectrum in several spectral ranges, at different pressure and temperature levels. Both linear and logarithmic scales are used in order to compare highest and lowest values.

### A.2 High pressures / temperatures

Absorption spectrum computed by KSPECTRUM in the case of Venus' atmosphere have been used to compute absorption coefficient average  $\bar{k}_a$  over 68 narrowband spectral intervals covering the  $[40-5825] \text{ cm}^{-1}$  range. These average absorption coefficients have been compared to average absorption coefficients computed from k-distribution data used for radiative transfer simulation in Venus' atmosphere [25, 26].

Comparisons have been performed at ground level (90.9atm, 735K), at an altitude of 5km (65.8 atm, 697K) and at an altitude of 55km (0.52atm, 302K).

In each case, orders of magnitude of average absorption coefficients computed from KSPECTRUM high-resolution spectrum are in good agreement with average absorption coefficients from k-distribution data, especially in the 1.7 and 2.3  $\mu m$  "transparency windows" (this validates sub-lorentzian profiles representation) and in the far infrared ( $\nu > 300 \text{ cm}^{-1}$ ) (which validates the collision-induced absorption continuum).



Table 1 provides a comparison between average absorption coefficients computed at ground level.

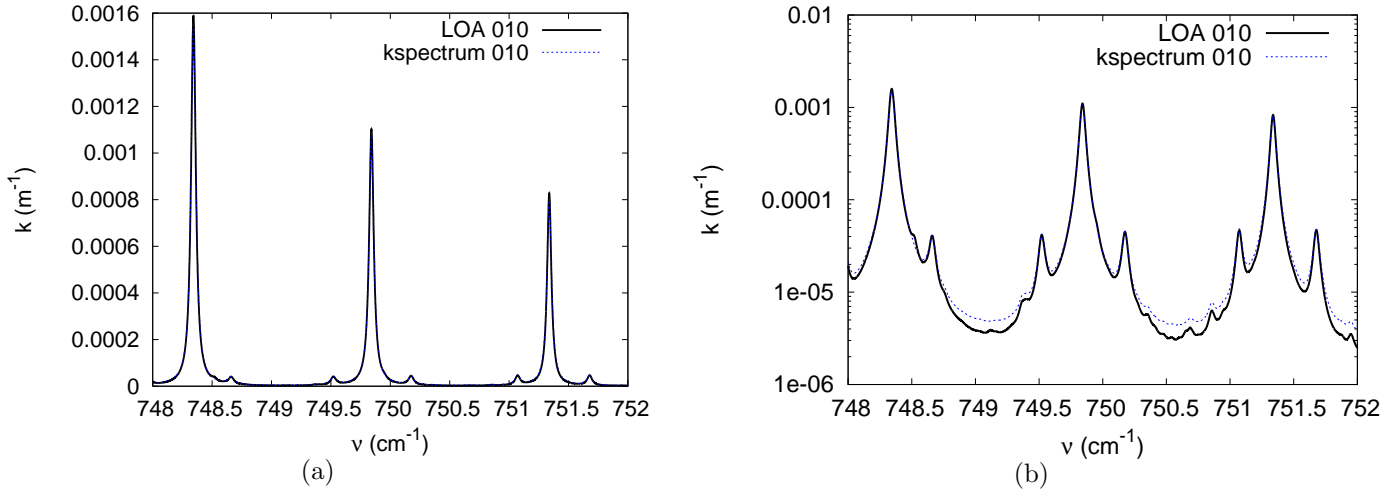


Figure 3: Absorption spectra for a  $H_2O$ ,  $CO_2$  and  $O_3$  mixture at pressure of 0,298 atm ( $x_{H_2O} = 3,34 \cdot 10^{-4}$ ,  $x_{CO_2} = 3,30 \cdot 10^{-4}$ ,  $x_{O_3} = 1,20 \cdot 10^{-7}$ ) and a temperature of 238,6K, in the  $[748 - 752] \text{cm}^{-1}$  spectral range.

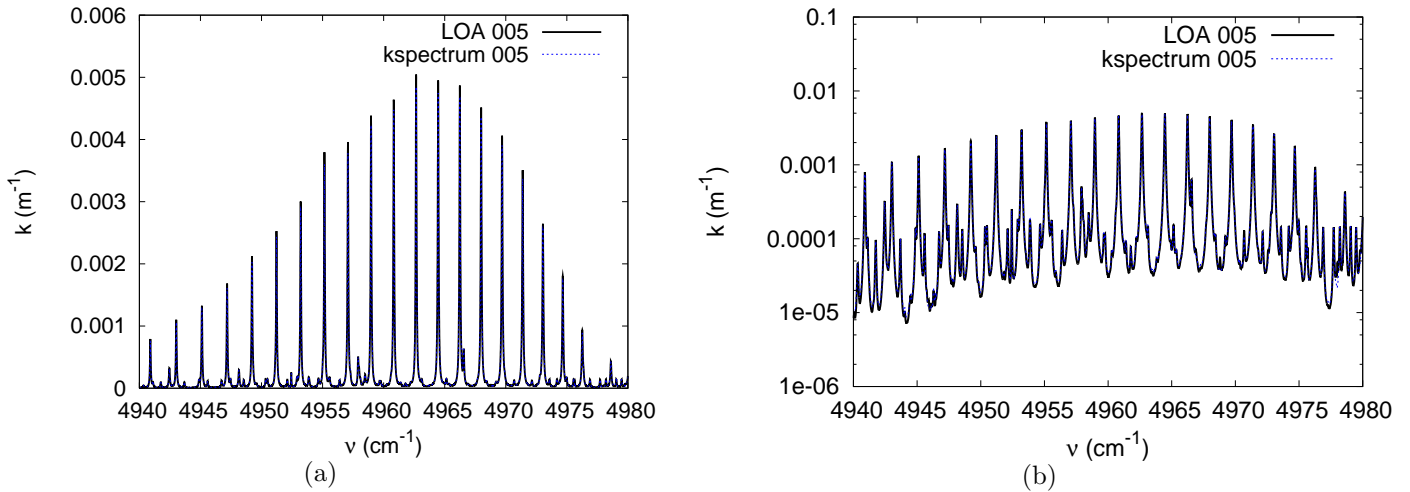


Figure 4: Absorption spectra for a  $H_2O$ ,  $CO_2$  and  $O_3$  mixture at pressure of 0,583 atm ( $x_{H_2O} = 3,04 \cdot 10^{-3}$ ,  $x_{CO_2} = 3,30 \cdot 10^{-4}$ ,  $x_{O_3} = 5,16 \cdot 10^{-8}$ ) and a temperature of 270,3K, in the  $[4940 - 4980] \text{cm}^{-1}$  spectral range.

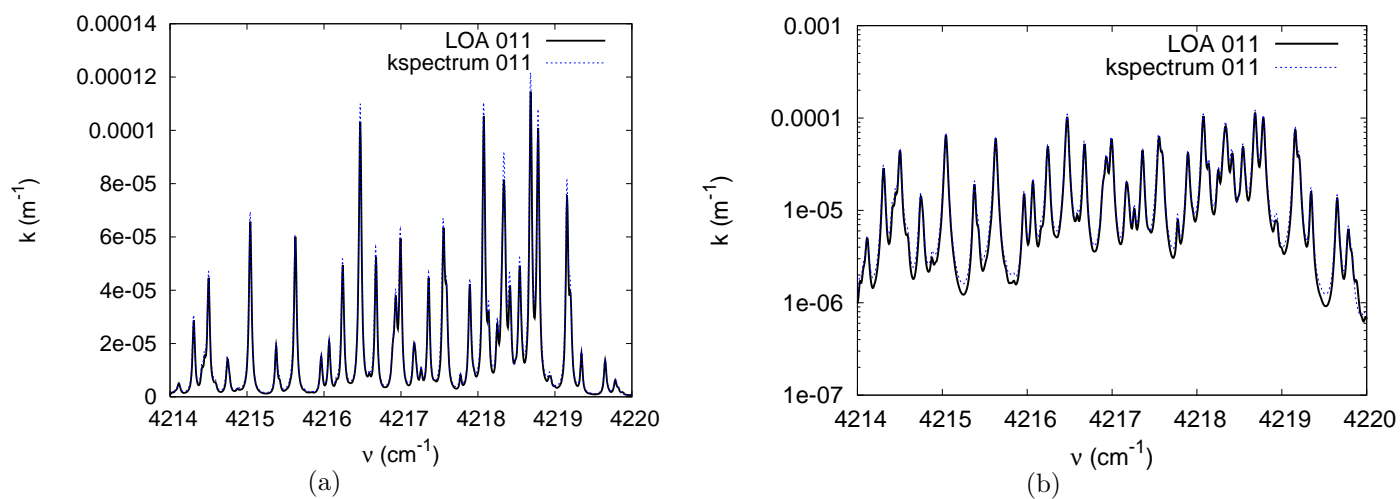


Figure 5: Absorption spectra for a  $H_2O$ ,  $CO_2$ ,  $O_3$  and  $CH_4$  mixture at pressure of 0,259 atm ( $x_{H_2O} = 1,74 \cdot 10^{-4}$ ,  $x_{CO_2} = 3,30 \cdot 10^{-4}$ ,  $x_{O_3} = 1,54 \cdot 10^{-7}$ ,  $x_{CH_4} = 1,56 \cdot 10^{-6}$ ) and a temperature of 232,1K, in the  $[4214 - 4220]cm^{-1}$  spectral range.

Table 1: Average absorption coefficients  $\bar{k}_a$  computed from KSPECTRUM high-resolution output spectra and from k-distribution data used for radiative transfer simulations ([25]) for some narrowband spectral intervals, at ground level (90,1 atm, 735K). Values of  $\bar{k}_a$  extracted from the k-distribution data set are not a reference, but are rather used as a comparison point.

$\nu_{inf}$	$\nu_{sup}$	$k_a$ k-distributions	$k_a$ KSPECTRUM
520	570	60,5	48,8
570	615	574,1	529,8
615	645	$2,36 \cdot 10^3$	$2,21 \cdot 10^3$
645	680	$7,56 \cdot 10^3$	$8,02 \cdot 10^3$
680	720	$3,71 \cdot 10^3$	$3,74 \cdot 10^3$
720	760	899,3	913,1
760	785	205,3	179,9
785	815	58,4	42,2
815	845	14,0	8,5
845	900	8,9	5,1
900	935	15,7	13,9
2100	2155	14,5	5,9
2155	2280	$3,22 \cdot 10^3$	$2,56 \cdot 10^3$
2280	2390	$5,28 \cdot 10^4$	$5,42 \cdot 10^4$
2390	2450	$1,48 \cdot 10^3$	$1,06 \cdot 10^3$
2450	2540	15,9	10,6
2540	2670	$2,8 \cdot 10^{-2}$	$3,1 \cdot 10^{-2}$
2670	2745	$1,4 \cdot 10^{-2}$	$1,1 \cdot 10^{-2}$
2745	2790	$2,0 \cdot 10^{-2}$	$4,0 \cdot 10^{-3}$
2790	2925	$7,9 \cdot 10^{-3}$	$2,5 \cdot 10^{-2}$
2925	3040	$2,2 \cdot 10^{-1}$	$1,1 \cdot 10^{-2}$
3040	3225	$2,2 \cdot 10^{-2}$	$9,9 \cdot 10^{-3}$
3225	3450	2,2	0,18
3450	3760	604,6	592,2
3760	3875	28,2	19,4
3875	4030	0,17	$9,4 \cdot 10^{-2}$
4030	4135	$4,1 \cdot 10^{-2}$	$1,9 \cdot 10^{-2}$
4135	4350	$3,2 \cdot 10^{-3}$	$1,1 \cdot 10^{-3}$
4350	4550	$6,8 \cdot 10^{-3}$	$3,3 \cdot 10^{-4}$
4550	4950	4,8	3,9
4950	5200	10,2	9,4
5200	5700	$2,7 \cdot 10^{-2}$	$1,6 \cdot 10^{-2}$
5700	5825	$3,4 \cdot 10^{-3}$	$1,6 \cdot 10^{-3}$

## References

- [1] L.S. Rothman, D. Jacquemart, A. Barbe, D.C. Benner, M. Birk, L.R. Brown, M.R. Carleer, C.Jr. Chackerian, K. Chance, L.H. Coudert, V. Dana, V.M. Devi, J.-M. Flaud, R.R. Gamache, A. Goldman, J.-M. Hartmann, K.W. Jucks, A.G. Maki, J.-Y. Mandin, S.T. Massie, J. Orphal, A. Perrin, C.P. Rinsland, M.A.H. Smith, J. Tennyson, R.N. Tolchenov, R.A. Toth, V.J. Auwera, P. Varanasi, and G. Wagner. The HITRAN 2004 molecular spectroscopic database. *Journal of Quantitative Spectroscopy and Radiative Transfer*, 96:139–204, 2005.
- [2] L.S. Rothman, L.E. Gordon, A. Barbe, D.C. Benner, P.F. Bernath, M. Birk, V. Boudon, L.R. Brown, A. Campargue, J.-P. Champion, K. Chance, L.H. Coudert, V. Dana, V.M. Devi, S. Fally, J.-M. Flaud, R.R. Gamache, A. Goldman, D. Jacquemart, L. Kleiner, N. Lacome, W.J. Lafferty, J.-Y. Mandin, S.T. Massie, S.N. Mikhailenko, C.E. Miller, N. Moazzen-Ahmadi, O.V. Naumenko, A.V. Nikitin, J. Orphal, V.I. Perevalov, A. Perrin, A. Predoi-Cross, C.P. Rinsland, M. Rotger, M. Simeckova, M.A.H. Smith, K. Sung, S.A. Tashkun, J. Tennyson, R.A. Toth, A.C. Vandaele, and V.J. Auwera. The HITRAN 2008 molecular spectroscopic database. *Journal of Quantitative Spectroscopy and Radiative Transfer*, 110:533–572, 2009.
- [3] L.S. Rothman, C. Camy-Peret, J.-M. Flaud, R.R. Gamache, A. Goldman, D. Gootvitch, R.L. Hawkins, J. Schroeder, J.E.A. Selby, and R.B. Wattson. HITEMP, the high-temperature molecular spectroscopic database. *available through <http://www.hitran.com>*, 2000.
- [4] L.S. Rothman, I.E. Gordon, R.J. Barber, H. Dothe, R.R. Gamache, A. Goldman, V.I. Perevalov, S.A. Tashkun, and J. Tennyson. HITEMP, the high-temperature molecular spectroscopic database. *Journal of Quantitative Spectroscopy and Radiative Transfer*, 111:2139–2150, 2010.
- [5] S.A. Tashkun, V.I. Perevalov, J.-L. Teffo, A.D. Byko, and N.N. Lavrentieva. CDSD-1000, the high-temperature carbon dioxide spectroscopic databand. *Journal of Quantitative Spectroscopy and Radiative Transfer*, 82:165–196, 2003.
- [6] D.E. Burch, D.A. Gryvnak, R.R. Patty, and C.E. Bartky. Absorption of infrared radiant energy by  $CO_2$  and  $H_2O$ . iv. shapes of collision-broadened  $CO_2$  lines. *Journal of the Optical Society of America*, 59:267–280, 1969.

- [7] R. LeDoucen, C. Cousin, C. Boulet, and A. Henry. Temperature dependence of the absorption in the region beyond the  $4.3 \mu\text{m}$  band head of  $\text{CO}_2$ . 1: Pure  $\text{CO}_2$  case. *Applied Optics*, 24 No. 6:897–906, 1985.
- [8] C. Cousin, R. LeDoucen, C. Boulet, and A. Henry. Temperature dependence of the absorption in the region beyond the  $4.3 \mu\text{m}$  band head of  $\text{CO}_2$ . 2:  $\text{N}_2$  and  $\text{O}_2$  broadening. *Applied Optics*, 24 No. 22:3899–3907, 1985.
- [9] V. Menoux, R. LeDoucen, and C. Boulet. Line shape in the low-frequency wing of self-broadened  $\text{CO}_2$  lines. *Applied Optics*, 26 No. 3:554–562, 1987.
- [10] M.Y. Perrin and J.M. Hartmann. Temperature-dependant measurements and modeling of absorption by  $\text{CO}_2 - \text{N}_2$  mixtures in the far line-wings of the  $4.3 \mu\text{m}$   $\text{CO}_2$  band. *Journal of Quantitative Spectroscopy and Radiative Transfer*, 42:311–317, 1989.
- [11] M.V. Tonkov, N.N. Filipov, V.V. Bertsev, J.P. Bouanich, Nguyen Van-Thanh, C. Brodbeck, J.M. Hartmann, C. Boulet, F. Thibault, and R. LeDoucen. Measurements and empirical modeling of pure  $\text{CO}_2$  absorption in the  $2.3\text{-}\mu\text{m}$  region at room temperature: far wings, allowed and collision-induced bands. *Applied Optics*, 35 No. 24:4863–4870, 1996.
- [12] N.I. Moskalenko, Y.A. Il'in, S.N. Parzhin, and L.V. Rodionov. Pressure-induced IR radiation absorption in atmospheres. *Izvestiya, Atmospheric and Oceanic Physics*, 15:632–637, 1979.
- [13] T.G. Adiks. Absorption spectrum of  $\text{CO}_2$  in the  $2.15\text{-}4 \mu\text{m}$  region under conditions of high pressure and  $\text{CO}_2$  content. *Optics and Spectroscopy*, 40:375–378, 1976.
- [14] T.G. Adiks. Influence of the state of agregation of  $\text{CO}_2$  on the intensities of allowed and induced absorption bands in the  $1\text{-}4 \mu\text{m}$  region. *Optics and Spectroscopy*, 44:541–544, 1978.
- [15] M.E. Thomas and M.J. Linevsky. Integrated intensities of  $\text{N}_2$ ,  $\text{CO}_2$  and  $\text{SF}_6$  vibrational bands from  $1800$  to  $5000 \text{ cm}^{-1}$ . *Journal of Quantitative Spectroscopy and Radiative Transfer*, 42:465–476, 1989.
- [16] M. Gruszka and A. Borysow. Roto-translational collision-induced absorption of  $\text{CO}_2$  for the atmosphere of Venus at frequencies from  $0$  to  $250 \text{ cm}^{-1}$  and at temperature from  $200\text{k}$  to  $800\text{k}$ . *Icarus*, 129:172–177, 1997.

- [17] M. Gruszka and A. Borysow. Computer simulation of the far infrared collision induced absorption spectra of gaseous  $CO_2$ . *Molecular physics*, 93 No. 6:1007–1016, 1998.
- [18] J.B. Pollack, O.B. Toon, and R. Boese. Greenhouse models of Venus' high surface temperature, as constrained by Pioneer Venus measurements. *Journal of Geophysical Research*, 85:8223–8231, 1980.
- [19] Y. Baranov, W.J. Lafferty, and G.T. Fraser. Infrared spectrum of the continuum and dimer absorption in the vicinity of the  $O_2$  vibrational fundamental in  $O_2/CO_2$  mixtures. *Journal of Molecular Spectroscopy*, 228:432–440, 2004.
- [20] P. Dubuisson, J.C. Buriez, and Y. Fouquart. High spectral resolution solar radiative transfer in absorbing and scattering media, application to the satellite simulation. *Journal of Quantitative Spectroscopy and Radiative Transfer*, 55:103–126, 1996.
- [21] P. Dubuisson, R. Borde, C. Schmechtig, and R. Santer. Surface pressure estimates from satellite data in the oxygen A-band. Applications to the MOS sensor over land. *Journal of Geophysical Research D*, 106:27277–27286, 2001.
- [22] P. Dubuisson, R. Borde, D. Dessailly, and R. Santer. In-flight spectral calibration of the oxygen A-band channel of MERIS. *International Journal of Remote Sensing*, 24 No. 5:1177–1182, 2003.
- [23] P. Dubuisson, D. Dessailly, M. Vesperini, and R. Frouin. Water vapor retrieval over ocean using near-IR imagery. *Journal of Geophysical Research*, 109, D19106, 2004.
- [24] P. Dubuisson, V. Giraud, O. Chomette, H. Chepfer, and J. Pelon. Fast radiative transfer modeling for infrared imaging radiometry. *Journal of Quantitative Spectroscopy and Radiative Transfer*, 95:201–210, 2005.
- [25] M.A. Bullock and D.H. Grinspoon. The recent evolution of climate on Venus. *Icarus*, 150:19–37, 2001.
- [26] V. Eymet, R. Fournier, J.-L. Dufresne, S. Lebonnois, F. Hourdin, and M.A. Bullock. Net-Exchange parameterization of thermal infrared radiative transfer in Venus' atmosphere. *Journal of Geophysical Research*, 114, E11008, DOI:10.1029/2008JE003276, 2009.