



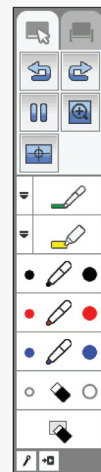
BrightLink Interaction

The BrightLink interactive pens turn any wall or table into an interactive area, either with or without a computer.

- With a computer, you can use Easy Interactive Tools (dual pens). This software lets you use the pen as a mouse to annotate, save, and interact with content from your computer.



- Without a computer, you can use the toolbar that is built into the projector (single pen). This lets you annotate images from a document camera, tablet, DVD player, or other source connected to your projector.



Students and colleagues can connect their own laptops and annotate on the fly using the built-in toolbar, without installing software.

Start Here

Follow the steps on this card to get started with your BrightLink:

- 1 Connect your computer and turn on the projector
- 2 Make sure the software is installed
- 3 Auto-calibrate
 - Using the remote control
- 4 Use the pens
 - Choosing the right tool
- 5 Use the built-in toolbar

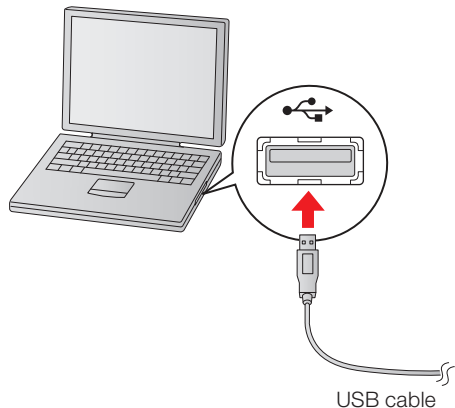
Get a DVD containing BrightLink training videos!



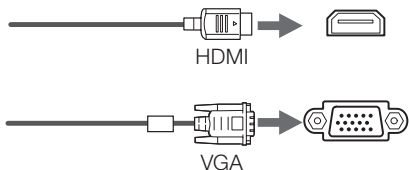
Just click the **BrightLink Training Resources** link on your desktop or go to **www.epson.com/eduresources** and request a DVD.


1 Connect Your Computer and Turn on the Projector

- 1 Connect the USB cable directly to any available USB port on your computer.



- 2 Connect an HDMI or VGA cable from the projector to your computer.



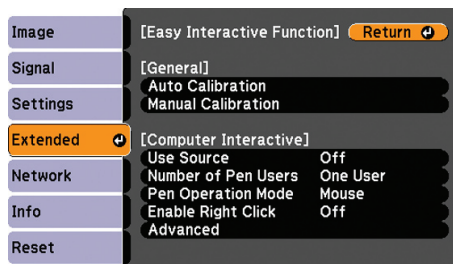
- 3 Turn on the projector by pressing the red  power button on the remote control.

In Windows®, you may see messages about device drivers or new hardware.

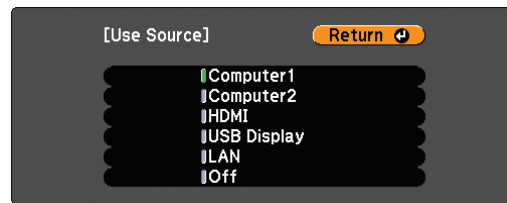
Depending on how your computer is connected to the projector, you may need to select your source for computer interaction.

- 4 Press the **Menu** button on the remote control, select the **Extended** menu, and press **Enter**.

- 5 Select the **Easy Interactive Function** setting and press **Enter**.




- 6 Select **Use Source** and press **Enter**.



- 7 Select the source where your computer is connected. For example, if your computer is connected with a VGA cable to the projector's **Computer1** port, select **Computer1**. If your computer is connected with an HDMI cable, select **HDMI**.

If you don't know which source to select, check with your school's tech coordinator.

- 8 Display an image from your computer. If the image doesn't appear, try one of the following:

- On some Windows laptops, you may need to hold down the **Fn** key on the keyboard and press **F7** or the function key that lets you display on an external monitor. It may have an icon such as , or it may be labelled **CRT/LCD**.
- On a Mac®, you may need to open **System Preferences** and select **Displays**. Select the **VGA Display** or **Color LCD** option if necessary, then click the **Arrange** or **Arrangement** tab, and select the **Mirror Displays** check box.
- Try pressing the **Source Search** button on the remote control.

② Make Sure the Software Is Installed

You may already have the software on your computer, or you may need to install it yourself. For Mac OS® X, you need Easy Interactive Driver and Easy Interactive Tools. For Windows and Linux, you only need Easy Interactive Tools.


Here's how to find out if the software is installed on your computer:

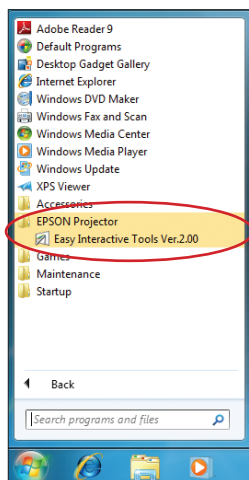
If you are using a Mac:

Look for the Easy Interactive Driver and Easy Interactive Tools folders in the Application folder on your hard drive. If you see these folders, the software is installed.



If you are using Windows:

Select  or **Start > All Programs or Programs > EPSON Projector > Easy Interactive Tools Ver. 2.00.** If you see Easy Interactive Tools Ver. 2.00, the software is installed.



If the software is not installed, follow the steps in the next column to install it.

If you need to install the software

Do one of the following:

- Use the CD that came with the projector, labeled “EPSON Projector Software for Easy Interactive Function”



- Download the most up-to-date version from:
epson.com/brightlinkdownloads (U.S.)
epson.ca/brightlinkdownloads (Canada)

For more information about Easy Interactive Tools, see the Easy Interactive Tools Tips sheet in this Welcome Kit or the BrightLink *User's Guide*.

You can also install TeamBoard Draw, an intermediate level annotation program, from the CD that came with the projector.

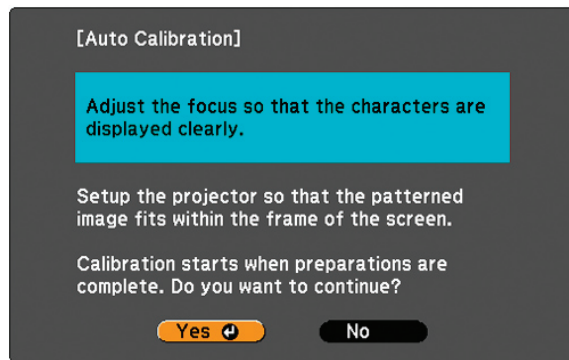


For more information, see the TeamBoard Draw Tips sheet in this Welcome Kit or the TeamBoard videos at **epson.com/brightlink** (U.S.) or **epson.ca/brightlink** (Canada).

③ Auto-Calibrate

Calibration coordinates the positioning of the pen with the location of your cursor. You only need to activate auto calibration the first time you use your projector, and you don't need the pens or a computer for calibration. You should not need to calibrate again unless the projector or image is moved, or the image is resized.

- 1 To start auto calibration, press the **User** button on the remote control. You see the following:

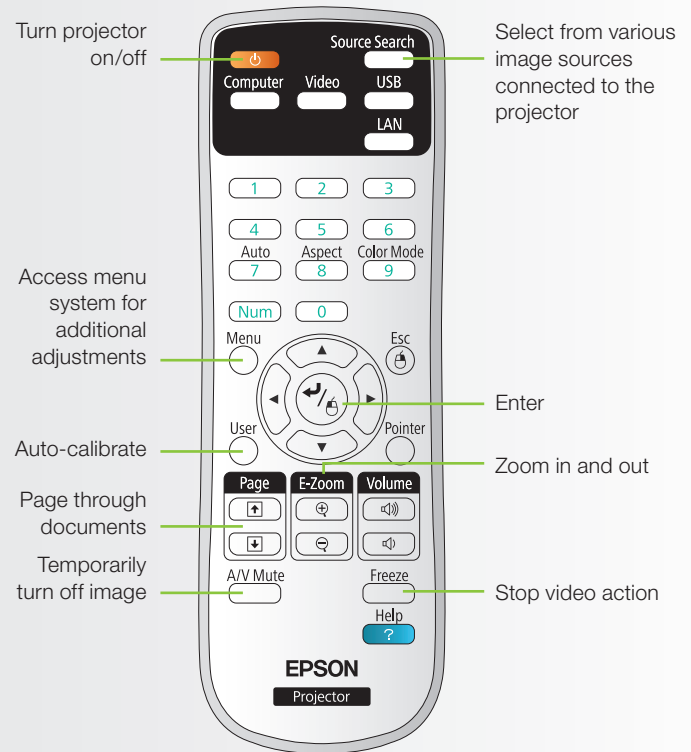


- 2 Press **Enter** to select **Yes**. A pattern appears.

- 3 Wait until calibration is complete.

If you see a message that calibration failed, you need to calibrate manually. Press the **Menu** button on the remote control, and select **Extended menu > Easy Interactive Function > Manual Calibration**. Follow the instructions on the screen to calibrate manually.

Using the Remote Control

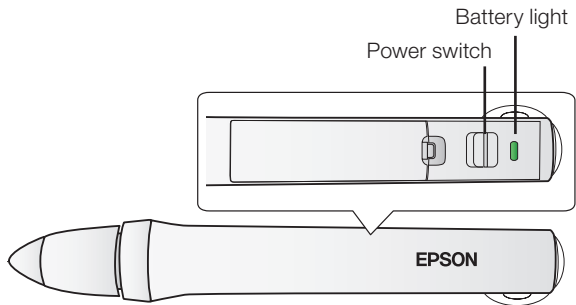


For more information on using the remote control and cool time-saving buttons:

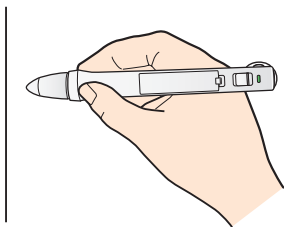
- See the *BrightLink User's Guide* on your computer or on the CD in this Welcome Kit.
- Go to the training section and watch a video or two at epson.com/brightlink (U.S.) or epson.ca/brightlink (Canada) or atomiclearning.com.

4 Use the Pens

Your projector came with 2 pens that have different colored ends, orange and blue. Make sure one AA battery is installed in each pen.



- To turn on the pen, slide the power switch. The green light comes on briefly. If the battery is low, the light flashes.
- Hold the pen perpendicular to the board, as shown below.



- To left-click, tap on the board.
- To double-click, tap twice.
- To right-click, press the board with the pen for about 3 seconds.
- To click and drag, tap and drag with the pen.
- To move the cursor, hover over the board without touching it.
- When you are finished, slide the power switch to turn off the pen.

Note: The pens turn off automatically after about 20 minutes of inactivity. Slide the switch to turn the pen back on.

Choosing the Right Tool

If you already have annotation software, you can use it with BrightLink. If you are using Microsoft® Office 2003 or later, you can also use the “inking tools” to add handwritten notes to your documents and PowerPoint® presentations.

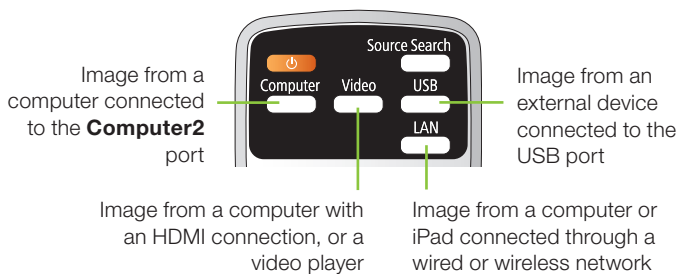
Here are some tips on choosing among the tools that came with your BrightLink projector:

	Built-In Toolbar	Easy Interactive Tools	TeamBoard Draw
Annotate on computer display	•	•	•
Annotate on white background	•	•	•
Annotate on images from document cameras or other sources	•		
Use both pens simultaneously		•	
Save annotations		•	•
Record lessons and import/export files			•

5 Use the Built-In Toolbar

The projector's built-in toolbar lets you annotate images from other devices that have been connected to the projector, such as a document camera, tablet, or other source. You can write with only one pen at a time, but you can use both pens and trade off.

- 1 Press one of the **Source** buttons on the remote control to select the source for the image you want to annotate. (Make sure you do not select the same source that is selected for Easy Interactive Function in the Extended menu.)



- 2 To activate the toolbar, tap the board with the pen. You see arrow icons on the left and right side of the projected image.

Note: The toolbar arrows disappear if they are not used. To make them reappear, tap the board with the pen.

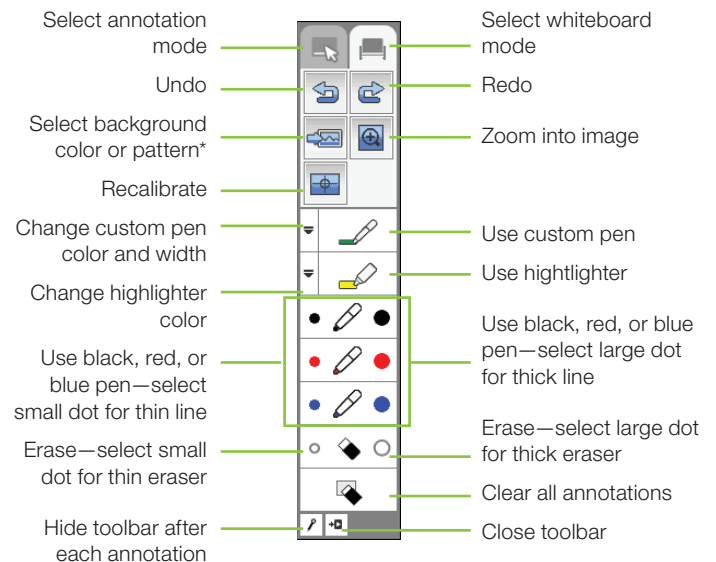
- 3 To display the toolbar, select one of the arrows.

- 4 To close the toolbar, select the icon at the bottom of the toolbar.

Note: Many of the built-in tools are the same as Easy Interactive Tools, but fewer functions are available. All of the tools are available, even if they have a gray background.

Two different toolbars are available, one for annotation mode and one for whiteboard mode.

- Annotation mode displays the built-in toolbar on whatever image is being projected.
- Whiteboard mode lets you project a white or black screen or background pattern, and use the pen to write or draw as you would on a chalkboard or dry erase board.



* In annotation mode, the freeze tool appears instead of this one. It lets you stop or resume action in a video.

Ready to Learn More?

- Sign up for complimentary webinars
- Watch helpful how-to videos
- Find out about cool, free interactive sites



Click the BrightLink Training Resources link on your desktop or go to www.epson.com/eduresources.

EPSON and BrightLink are registered trademarks and EPSON Exceed Your Vision is a registered logomark of Seiko Epson Corporation.

PrivateLine is a registered trademark of Epson America, Inc.

General Notice: Other product names used herein are for identification purposes only and may be trademarks of their respective owners. Epson disclaims any and all rights in those marks.

This information is subject to change without notice.