

1 INTRODUCTION..... 8

1.1 Summarization..... 8

1.2 System Requirements 10

1.2.1 TD3004~TD3216 series cards system requirements 10

1.2.2 TD3316 system requirements 11

1.2.3TD3101、3104 USB cards system requirements..... 12

1.2.4TD4104 card system requirements 13

1.3 System Specifications 14

2 HARDWARE INSTALLATION 14

2.1 Video Capture Card Hardware..... 14

TD3004 Card Hardware 14

TD3008 Card Hardware 15

TD3016 Card Hardware 16

TD3116 Card Hardware 18

TD3216 Card Hardware 19

TD3316 Card Hardware 20

TD3101 USB Card Hardware..... 23

TD3104 USB Card Hardware..... 24

TD4104 Card Hardware 25

Alarm Board Hardware 27

Connect Audio Signal.....	28
---------------------------	----

2.2 Install Video Capture Card Driver 28

3 MAIN DISPLAY INTERFACE 32

3.1 Display Control Panel..... 33

Display Control Panel	33
Display Modes	34
Flip Pages.....	34
Auto Dwell display Mode	34
Quick Switch.....	35

3.2 Login 35

3.3 Record..... 36

Record Modes	36
Record Setup.....	36
Record Status Panel.....	38
Manual Record Mode.....	38
Sensor Alarm Record Mode	39
Motion Detection Record Mode	39
Schedule Record	39
Recycling Record.....	40

4 SYSTEM SETUP 40

4.1 Basic Configuration.....	42
4.2 Video Configuration	44
4.3 Motion Detection configuration.....	46
Set Motion Detection Area	47
Set Motion Detection Sensitivity.....	47
4.4 Schedule configuration.....	48
4.5 Motion Detection Alarm Configuration...	49
Alarm Triggering Conditions Configuration.....	49
Alarm Record.....	52
Alarm Output	53
Auto Mail Function	54
4.6 P.T.Z Control Configuration.....	57
Protocol Setup.....	57
Serial ports setup.....	58
4.7 Users Configuration	59
Change User rights.....	59
Add User 60	
Delete User	61

5 P.T.Z CONTROL 61**6 RECORD SEARCH AND PLAYING
BACK..... 66****6.1 Record Search 67****6.2 Record Playing back and Control 68****6.3 Other Functions 72**

Record File Backup.....72

Delete Record Files73

Capture Pictures74

Image Zoom In / Out.....77

**7 REMOTE SURVEILLANCE AND
PLAYING BACK..... 79****7.1 Remote Live Surveillance..... 79**

Remote Surveillance Server Configuration80

Remote Surveillance Client-side Setup.....80

7.2 Remote Playing back 87

Remote Playing back server Configuration	87
Remote Playing back Client-side Setup	88
Remote Playing back Configuration and Control	93

7.3 Mobile Surveillance 97

Introduction to Mobile Surveillance	97
Client Configuration of Windows Mobile	97
Client Configuration of Symbian 60	99

APPENDIX 104

APPENDIX 1: DIFFERENCES AMONG TD SERIES CARD 104

APPENDIX 2: FREQUENTLY ASKED QUESTIONS..... 105

Appendix 2.1 About Installation 105

Appendix 2.1.1 Cannot Install the SuperDVR Driver	105
Appendix 2.1.2 Why cannot run SuperDVR at the windows 2003 operate system?	105
Appendix 2.1.3 ‘Unspecified error’ in the End of Installation	105
Appendix 2.1.4 Can’t find TD series Devices in Device Manager	106

Appendix 2.2 How to Use SuperDVR..... 106

Appendix 2.2.1 Meanings of the indicator lights	106
Appendix 2.2.2 How does the different record mode work?	106
Appendix 2.2.3 How to set recycling record mode on the system? ...	107
Appendix 2.2.4 How to set auto reboot function?	107
Appendix 2.2.5 How to quickly use the schedule record function? ...	108
Appendix 2.2.6 What are the byte rates for different image qualities from highest to normal?	108
Appendix 2.2.7 The frame rate seems to be lower than what I set? ...	108
Appendix 2.2.8 Why I can't select more channels to backup?	108
Appendix 2.2.9 When should I select manual Gain Control?	108

Appendix 2.3 How to Use Network Function 109

Appendix 2.3.1 How to monitor on the client-side?	109
Appendix 2.3.2 Why I can't download the client-side software?	109
Appendix 2.3.3 Why can't the server be configured at the client-side? 109	
Appendix 2.3.4 Why I can't see the images?	110
Appendix 2.3.5 What should I do if the Internet speed is quite slow? 110	
Appendix 2.3.6 Why I can't start WebCam server or RPB server? ...	110

Appendix 2.4 Other questions.....111

Appendix 2.4.1 Why computer display doesn't work, and why I can't access window system?	111
Appendix 2.4.2 Why I can't find the recorded files?	111
Appendix 2.4.3 Why the screens display is unstable with dithering and water-wave images?	111

Appendix 2.4.4 Why does it delay to play back, and it's slow to close
and open the driver? 111

Appendix 2.4.5 Why I can't play back?..... 112

Appendix 2.4.6 Why do I see some gray blocks on time progress bar
area when play back? 112

Appendix 2.4.7 Why do I see some old record sections that can't be
covered when play back? 112

APPENDIX 3 QUICK START FOR USING

112

APPENDIX 4 FUNCTION TREE 116

1 Introduction

1.1 Summarization

Thank you for choosing our digital video capture cards.

1Channel, 4 Channel, 8 Channel and 16 Channel cards adopt MPEG4 compression format, and enable maximum 16 channels real-time or none real-time surveillance. Our cards are mature and cost-effective products that should be your ideal choices. They enable synchronous audio and video compression and transmission, with their powerful compression rate and network transmission function. They are widely used in banks, intelligent communities, traffic management units, medical systems, educational systems, armed forces and so on.

This manual is suitable for SuperDVR 4.3, which supports TD3004, TD3008, TD3016, TD3116, TD3216, TD3316, TD4104, TD3101, and TD3104 cards.

In this manual, you will learn how to install the hardware and driver (software), and how to setup the systems of this range of products. Please make sure your operations with the products are strictly in accordance with the manual, so as to keep the stability of the digital surveillance systems.

The following are standard functions of the products:

(1) Schedule record mode

Users can choose any term in a day to record and set up record modes, i.e. sensor alarm record, motion detection record, manual record, Schedule Record.

(2) Motion detection mode

Motion detection areas are adjustable and maximum 16 areas for each channel. Users can also set motion detection sensitivity for each channel. The system begins to record only when motion of the detected object happens, and it will stop recording after a certain period, this function is adjustable by users.

(3) Sensor alarm record mode

With extra alarm board, the system enables alarm input and output.

(4) Recycling record mode

Users can set recording storage sequence for HDD partitions. The recording storage will automatically swap to the next partition when it is full. If all the partitions are full and recycling record mode is enabled, the former recorded data will be covered by new data. Users can also set HDD minimum storage alarm. Then once the present storage space is less than the minimum storage and recycling record mode is not enabled, the record will automatically stop.

(5) P.T.Z control function

Support a number of decoders. Users can control multiple speed domes and integrative cameras, including pan, tilt, zoom, focus and iris adjustment for P.T.Z devices. Support preset point and auto scout.

(6) Users management

Different users have different rights, user names and passwords, so as to ensure system security.

(7) Multi-channel display

Support different multi-channel display modes, full screen display and auto dwell display.

(8) Watch dog function

The 16 Channels card has watchdog function. In case SuperDVR driver or windows system is frozen, the watchdog will restart the computer and login SuperDVR system again automatically.

(9) One PC support 1 to 4 cards of the same model, the maximum frame

rate can be 200 fps and 16 channels at most.

(10) Support 320x240 / 640x480 (NTSC), 352x288 / 704x576(PAL) standard resolutions.

(11) Image color adjustable for each channel, including contrast, lightness, hue and saturation.

(12) MPEG4 compression format, greatly reduce HDD usage

(13) Powerful video playing back functions, including playing back, pause, stop, fast-forward, single-frame play and image capture.

(14) Support advanced search mode. Users can search by date/time, camera, record mode, and random combination of the three methods.

(15) Support recorded files backup, delete by date/time, camera.

(16) Convenient to extend system functions by software upgrade.

(17) Supply multiple languages, including Chinese (Traditional), English, German, Spanish, Portuguese and other customized languages.

(18) CPU and storage resources saving by advanced technology

(19) Remote Surveillance and P.T.Z control through LAN, Intranet, and Internet.

(20) Support alarm pre-record.

(21) Support buzzer, email alarm out.

(22) Can greatly decrease fragmented files while using NTFS partition.

(23) User-friendly graphical user interface.

1.2 System Requirements

1.2.1 TD3004~TD3216 series cards system requirements

Card	TD3004、TD3008、TD3016、TD3116、TD3216
PC Module	

CPU	Intel PIII processor, minimum 800MHz
Motherboard	Intel 815/845/865/915 series
HDD	80G minimum
RAM	256M minimum
VGA	GeForce2, GeForce4, FX5200, ATI Rage128
OS	Windows2000 / XP
DirectX	9.0

Table1.1 TD3004~TD3216 series cards system requirements

Notice, motherboards listed below which has passed the test can work well with TD3004~TD3216: GIGA: GA-8IRXI (Intel 845D)

GA-8IE2004 (Intel 845E)

GA-6OXT (Intel 815EP)

GA-8PE800 (Intel 845PE)

GA-8IPE1000-G (Intel 865PE)

ASUS: P4S8X (Sis 648)

TUSL2-C (Intel 815EP)

P4P800 (Intel 865PE)

MSI: MS-6566E (Intel 845E)

Intel845DDA+ (Intel 845E)

1.2.2 TD3316 system requirements

Card PC Module	TD3316
CPU	Intel P4 2.8G minimum
Motherboard	Intel 865/915
HDD	160G minimum
RAM	512M minimum
VGA	NVIDIA GeForce MX440/FX5200 ATI RADEON 7500/ X300/ X250/ X5518

OS	Windows 2000(SP4 above)/ Windows XP(SP1above)
DirectX	9.0

Table1.2 TD3316 system requirement

Notice, motherboards listed below which has passed the test can work well with TD3316:

Foxconn 865A01 (Intel 865)

Ga-81pe1000-G 865 (Intel 865)

Asus P4p800 865 (Intel 865)

ASUS P5GD1-VM 915 (Intel 915)

MSI 6728 865 (Intel 865)

Abit IS7-E 865 (Intel 865)

ASUS-P4GPL-X 915 (Intel 915)

ASROCK 775I915PL-SATA2 915 (Intel 915)

1.2.3TD3101、3104 USB cards system requirements

PC Module \ Card	TD3101, TD3104
CPU	Intel P4 Celeron processor, minimum 1700MHz
Motherboard	Intel 845/865/915 series
HDD	80G minimum
RAM	256M minimum
VGA	GeForce2, GeForce4, FX5200, ATI Rage128
OS	Windows 2000(SP4 above)/2003(SP1 above)/XP(SP2 above)
DirectX	9.0
USB	2.0

Table1.3 TD3101、3104 system requirements

1.2.4TD4104 card system requirements

PC Module \ Card	TD4104
CPU	Intel P4 Celeron processor 2.0G minimum
Motherboard	Intel 845/865/915 series
HDD	80G minimum
RAM	256M minimum
VGA	GeForce MX400、ATI 9200、(32M above)
OS	Windows 2000/2003/XP
DirectX	9.0

Table1.4 TD4104 system requirements

Notice, motherboards listed below which has passed the test can work well with TD4104:

ASROCK 775I915PL-SATA2

Asus P4p800SE

ASUS P5VDC-X

GA G8i845GVW-RZ

GA-k8vT890

MSI 865PE

IWILL i845G

Foxconn 865GV

Special Notice:

If recorded disk partition's format is FAT32 and the system has run for a long time, the system will create a lot of data fragments that may results in system runs slowly. It's recommended to make disk defragmenter every 10 to 30 days. We strongly suggest that use NTFS format for record disk partition.

1.3 System Specifications

Format: PAL/NTSC

Resolution: TD3004、3008、3016、3116、3216、3101、3104 support 320x240 / 640x480 (NTSC), 352x288 / 704x576(PAL), TD3316 supports 352 × 240 / 704 × 480(NTSC), 352x288 / 704x576(PAL)and TD4104 supports 320 × 240(NTSC) , 352 × 288(PAL).

Maximum Frame rate per channel: 25 fps (PAL), 30 ftp (NTSC)

Screen set: resolution 1024 × 768, color quality 16 bits or 32 bits

Compression code rate: 50kbps – 1.2Mbps

Data format: MPEG4

2 Hardware installation

2.1 Video Capture Card Hardware

TD3004 Card Hardware

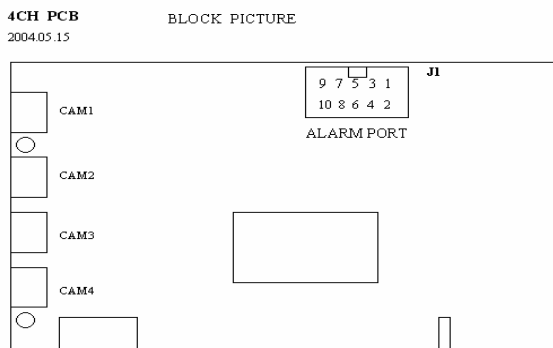


Fig 2.1 TD3004 Video Capture Card

Pin Port	Define	Interpret
1PIN	5V	Power Source (5V)
2PIN	ALARM_COM	Alarm COM
3PIN	ALARM_NC	Alarm Normal Close
4PIN	ALARM_IN1	Alarm Input 1
5PIN	ALARM_NO	Alarm Normal Open
6PIN	ALARM_IN2	Alarm Input 2
7PIN	GND	Ground
8PIN	ALARM_IN3	Alarm Input 3
9PIN	GND	Ground
10PIN	ALARM_IN4	Alarm Input 4

Table 2.1 TD3004 card pins

TD3008 Card Hardware

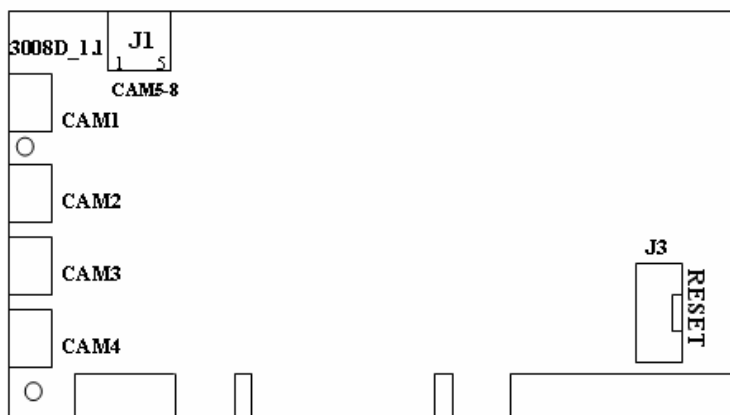


Fig2.2 TD3008 Video Capture Card

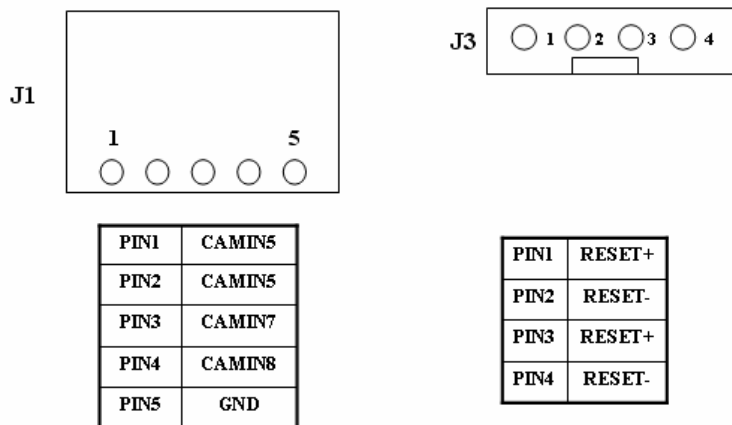


Fig2.3 pin definitions of TD3008 Video Capture Card

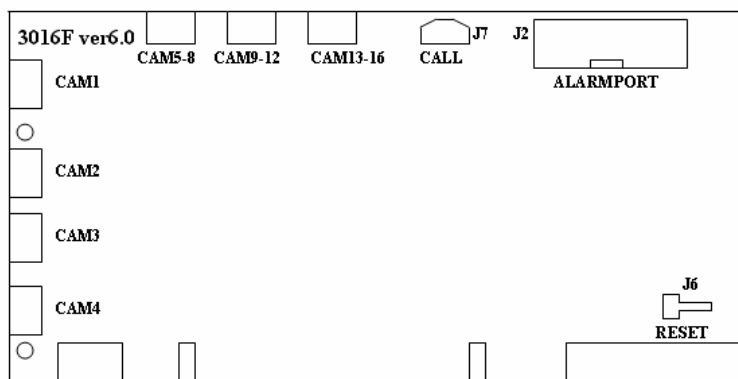
TD3016 Card Hardware

Fig2.4 TD3016 Video Capture Card circuit link for Watchdog function

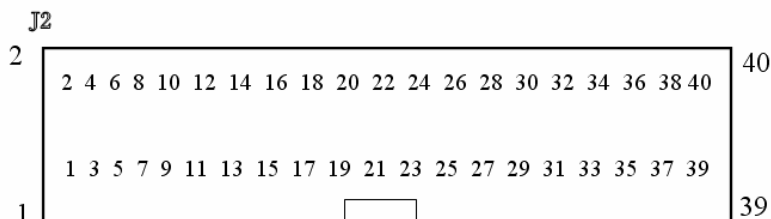


Fig2.5 TD3016 Video Capture Card Alarm Port

The Alarm Port pin definitions of TD3016 Card are as below:

Pin Port	Define	Interpret	Pin Port	Define	Interpret
Pin1	Alarm_in1	Alarm Input 1	Pin21	Alarm_out5	Alarm Output 5
Pin2	Alarm_in2	Alarm Input 2	Pin22	Alarm_out6	Alarm Output 6
Pin3	Alarm_in3	Alarm Input 3	Pin23	Alarm_out7	Alarm Output 7
Pin4	Alarm_in4	Alarm Input 4	Pin24	Alarm_out8	Alarm Output 8
Pin5	Alarm_in5	Alarm Input 5	Pin25	Alarm_out9	Alarm Output 9
Pin6	Alarm_in6	Alarm Input 6	Pin26	Alarm_out10	Alarm Output 10
Pin7	Alarm_in7	Alarm Input 7	Pin27	Alarm_out11	Alarm Output 11
Pin8	Alarm_in8	Alarm Input 8	Pin28	Alarm_out12	Alarm Output 12
Pin9	Alarm_in9	Alarm Input 9	Pin29	Alarm_out13	Alarm Output 13
Pin10	Alarm_in10	Alarm Input 10	Pin30	Alarm_out14	Alarm Output 14
Pin11	Alarm_in11	Alarm Input 11	Pin31	Alarm_out15	Alarm Output 15
Pin12	Alarm_in12	Alarm Input 12	Pin32	Alarm_out16	Alarm Output 16
Pin13	Alarm_in13	Alarm Input 13	Pin33	Alarm_Com	Alarm COM
Pin14	Alarm_in14	Alarm Input 14	Pin34	Alarm_NO	Alarm Normal Open
Pin15	Alarm_in15	Alarm Input 15	Pin35	Alarm_NC	Alarm Normal Close
Pin16	Alarm_in16	Alarm Input 16	Pin36	GND	Ground
Pin17	Alarm_out1	Alarm Output 1	Pin37	GND	Ground

Pin18	Alarm_out2	Alarm Output 2	Pin38	5V	Power Source (5V)
Pin19	Alarm_out3	Alarm Output 3	Pin39	Not Used	Not Used
Pin20	Alarm_out4	Alarm Output 4	Pin40	Not Used	Not Used

Table2.2 Pins definitions of TD3016 Card

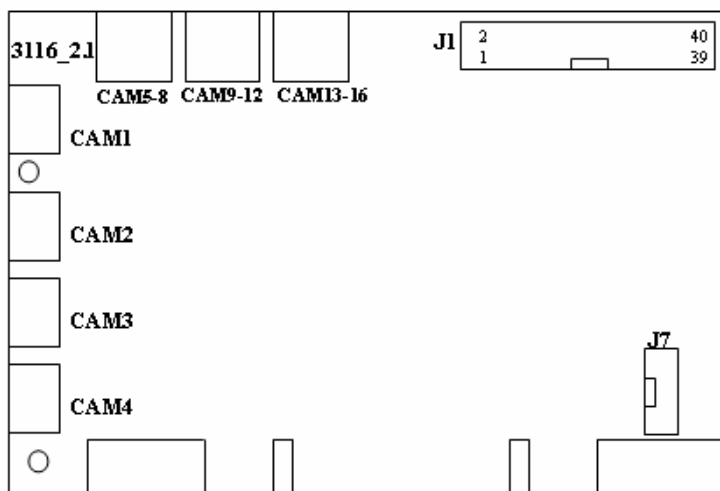
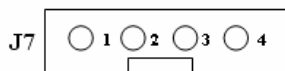
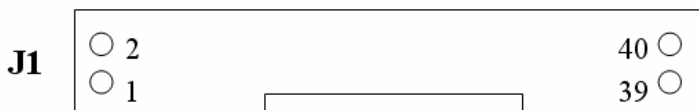
TD3116 Card Hardware

Fig2.6 TD3116 Video Capture Card



PIN1	RESET+
PIN2	RESET-
PIN3	RESET+
PIN4	RESET-

Fig2.7 Reset Pins definitions of TD3116 Video Capture Card



PIN1	AI1	PIN9	AI9	PIN17	AO1	PIN25	AO9	PIN33	ALAM.COM
PIN2	AI2	PIN10	AI10	PIN18	AO2	PIN26	AO10	PIN34	ALAM.NO
PIN3	AI3	PIN11	AI11	PIN19	AO3	PIN27	AO11	PIN35	ALAM.NC
PIN4	AI4	PIN12	AI12	PIN20	AO4	PIN28	AO12	PIN36	GND
PIN5	AI5	PIN13	AI13	PIN21	AO5	PIN29	AO13	PIN37	GND
PIN6	AI6	PIN14	AI14	PIN22	AO6	PIN30	AO14	PIN38	5V
PIN7	AI7	PIN15	AI15	PIN23	AO7	PIN31	AO15	PIN39	NOT USED
PIN8	AI8	PIN16	AI16	PIN24	AO8	PIN32	AO16	PIN40	NOT USED

Fig2.8 Pins definitions of TD3116 Video Capture Card

TD3216 Card Hardware

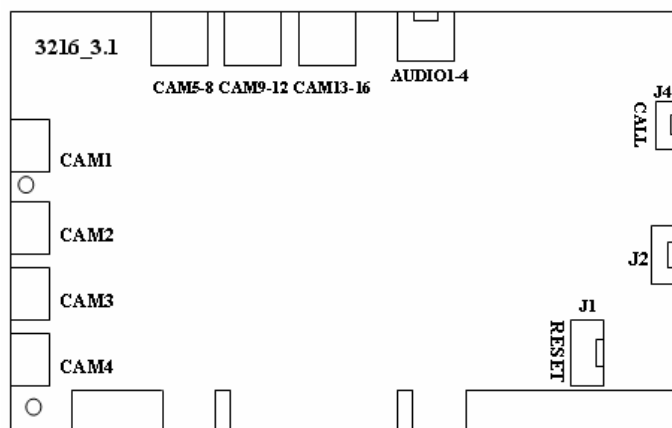


Fig2.9 TD3216 Video Capture Card

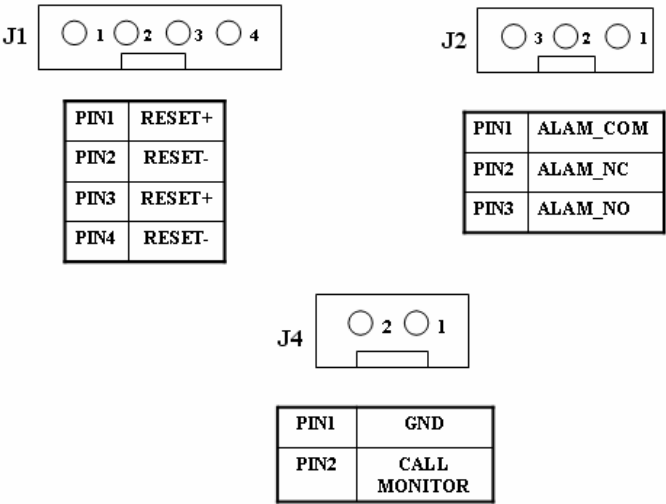


Fig2.10 Pins definitions of TD3216 Video Capture Card

TD3316 Card Hardware

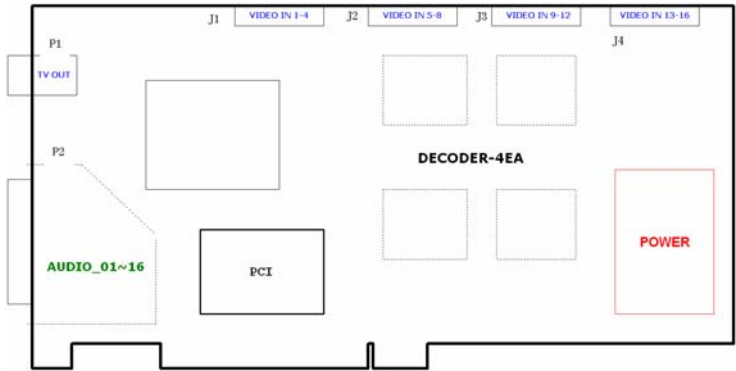


Fig2.11 TD3316 Video Capture Card

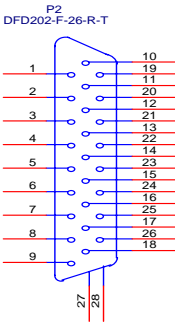


Fig2.12 Audio Connector

PIN1	AUDIO2	PIN11	AUDIO3
PIN2	AUDIO4	PIN12	AUDIO5
PIN3	AUDIO6	PIN13	AUDIO7
PIN4	AUDIO8	PIN14	AUDIO9
PIN5	AUDIO10	PIN15	AUDIO11
PIN6	AUDIO12	PIN16	AUDIO13
PIN7	AUDIO14	PIN17	GND
PIN8	AUDIO15	/	
PIN9	AUDIO16		
PIN10	AUDIO1	PIN26	

Table2.3 definitions of Audio connector’s PINs

J1
GiL-G-8P-S3T2-E



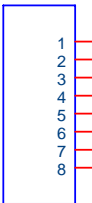
PIN1	VIN-1
PIN2	GND
PIN3	VIN-2
PIN4	GND
PIN5	VIN-3
PIN6	GND
PIN7	VIN-4
PIN8	GND

J2
GiL-G-8P-S3T2-E



PIN1	VIN-5
PIN2	GND
PIN3	VIN-6
PIN4	GND
PIN5	VIN-7
PIN6	GND
PIN7	VIN-8
PIN8	GND

J3
GiL-G-8P-S3T2-E



PIN1	VIN-9
PIN2	GND
PIN3	VIN-10
PIN4	GND
PIN5	VIN-11
PIN6	GND
PIN7	VIN-12
PIN8	GND

J4
GiL-G-8P-S3T2-E



PIN1	VIN-13
PIN2	GND
PIN3	VIN-14
PIN4	GND
PIN5	VIN-15
PIN6	GND
PIN7	VIN-116
PIN8	GND

Fig2.13 Video PINs definition

TD3101 USB Card Hardware

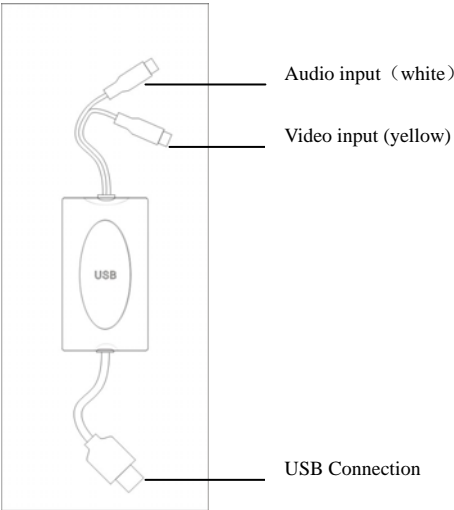


Fig2.14 TD3101 USB Video Capture Card

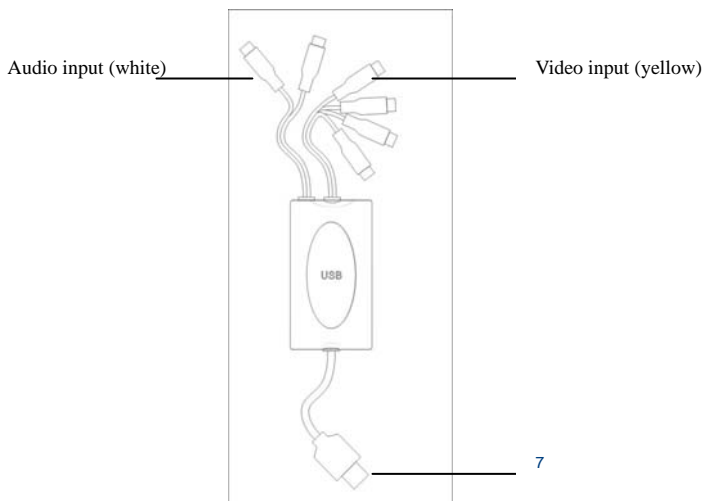
TD3104 USB Card Hardware

Fig2.15 TD3104 USB Video Capture Card

Notice:

Make sure that your PC USB interface is 2.0; TD3101/3104 card can only support USB 2.0.

Please according to the following steps to safely remove the USB card:
Right clicks on the Taskbar Stop device pull out the USB card.

Using TD3101/3104 card with other USB device simultaneously may cause PC cannot identify USB card.

Do not insert two or more USB video capture cards simultaneously.

Do not use with the other PCI video capture card simultaneously.

TD4104 Card Hardware

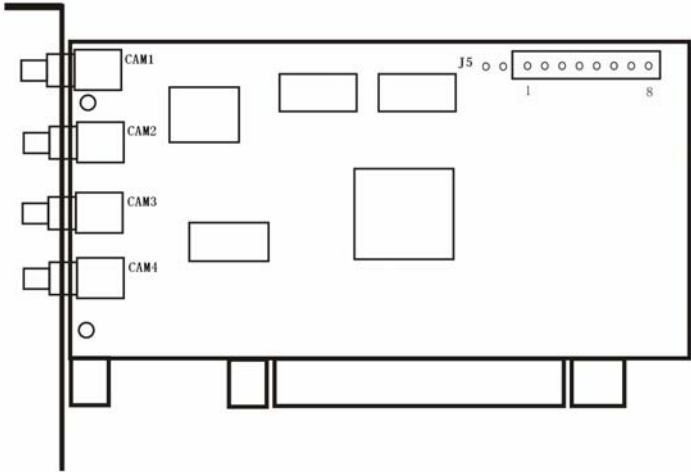
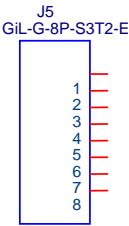


Fig2.16 TD4104 Video Capture Card



PIN1	AUDIO-1
PIN2	GND
PIN3	AUDIO-2
PIN4	GND
PIN5	AUDIO-3
PIN6	GND
PIN7	AUDIO-4
PIN8	GND

Table2.17 definitions of Audio connector’s PINs

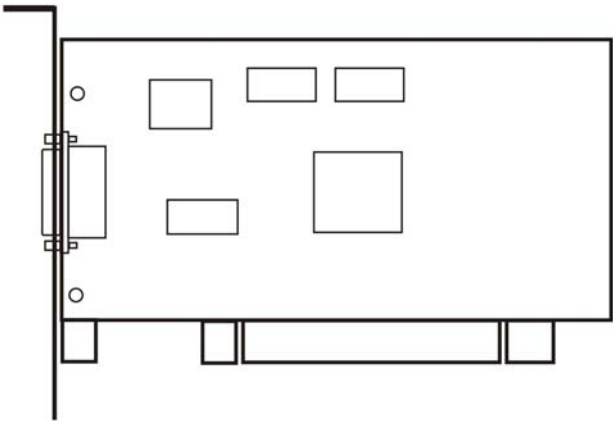
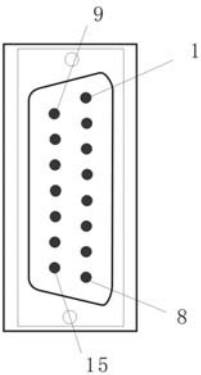


Fig2.18 TD4104 Video Capture Card



PIN1	VIDEO-1	PIN9	GND
PIN2	GND	PIN10	AUDIO-1
PIN3	VIDEO-2	PIN11	AUDIO-2
PIN4	GND	PIN12	AUDIO-3
PIN5	VIDEO-3	PIN13	AUDIO-4
PIN6	GND	PIN14	NULL
PIN7	VIDEO-4	PIN15	GND
PIN8	GND		

Table2.19 definitions of Audio and video connector’s PINs

Notice: Our TD4104 cards have two different ports, please refer to your user manual according to the product you purchase

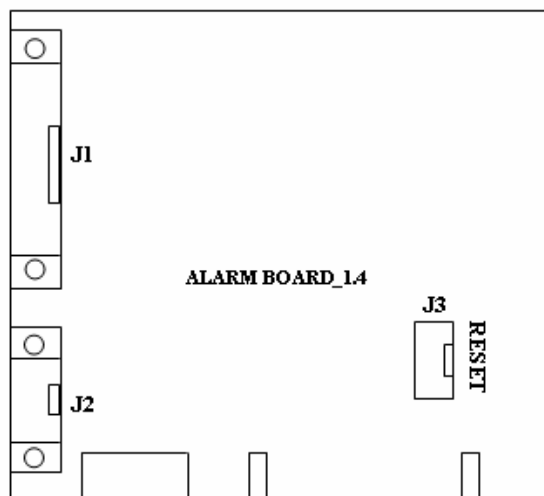
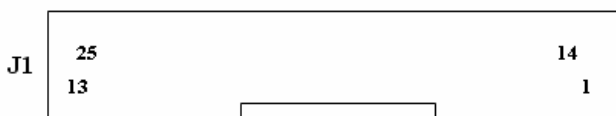
Alarm Board Hardware

Fig2.18 Alarm Board



PIN1	AI0	PIN6	AI5	PIN11	AI10	PIN16	AI5	PIN21	ALAM_COM
PIN2	AI1	PIN7	AI6	PIN12	AI11	PIN17	A0	PIN22	ALAM_NO
PIN3	AI2	PIN8	AI7	PIN13	AI12	PIN18	A1	PIN23	ALAM_NC
PIN4	AI3	PIN9	AI8	PIN14	AI13	PIN19	A2	PIN24	GND
PIN5	AI4	PIN10	AI9	PIN15	AI14	PIN20	A3	PIN25	VCC

Fig2.15 Pins definitions of Alarm Board

Connect J2 to PC serial port and you may use alarm board by

SuperDVR system.

Connect Audio Signal

For TD3004/3008/3016/3116/3216/4104, connect the audio input device to the microphone connector on the motherboard.

Note:

Before installing the Video Capture Card hardware in PCI port of the motherboard, make sure you've installed Microsoft DirectX 9.0. Then turn on the computer, the system will remind you to "Found new hardware".

Notice: Just click "cancel" and ignore the pop-up message.

Insert the CD that contains TD series capture card driver into the CD tray, and run Setup.exe program to install the driver. The default installation path is 'C:\Program Files\SuperDVR'.

Notice: In case it warns that 'Can't find card' when running the SuperDVR software, please restart the computer.

2.2 Install Video Capture Card Driver

Run Setup.exe, and the installation interface appears as below:



Fig2.30 TD series video capture card installation interface

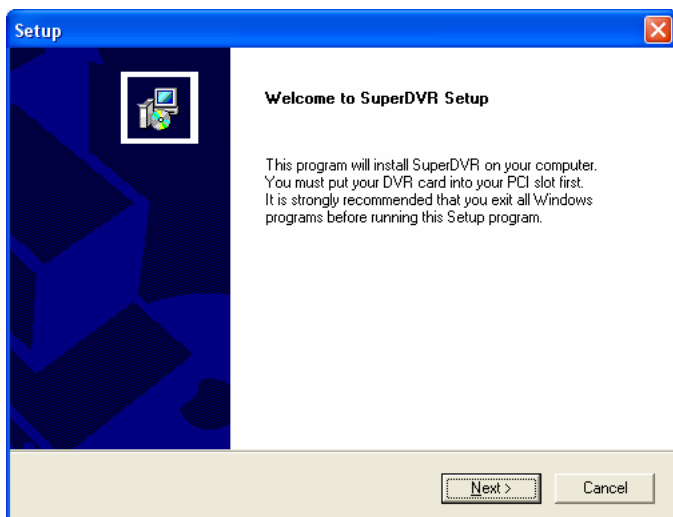


Fig2.31 Welcome page

Select 'Next',

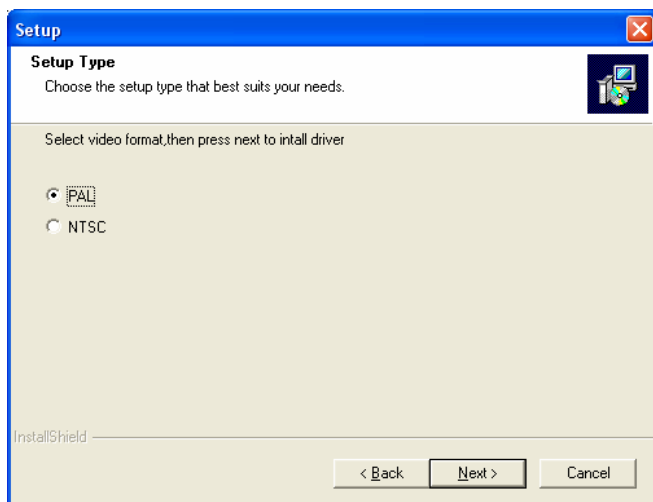


Fig2.32 Select video format

Select 'Next',

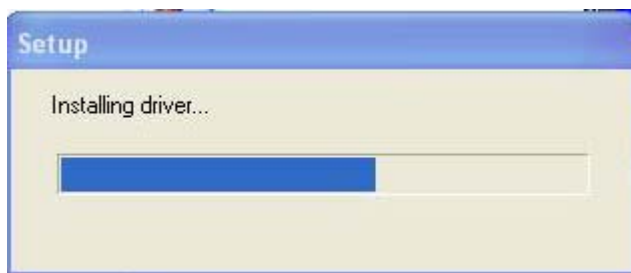


Fig2.33 Rate of progress of driver installation

After this process it begins to install the application package SuperDVR, as below:

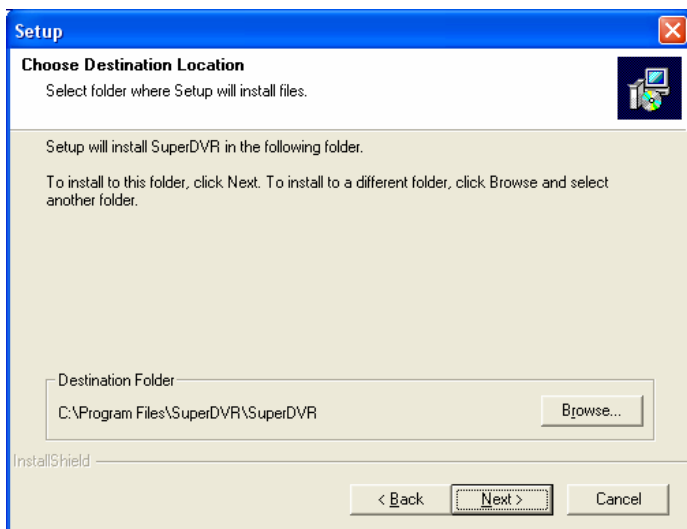


Fig2.34 Select installation pass
Select the suitable option, and click 'Next'.

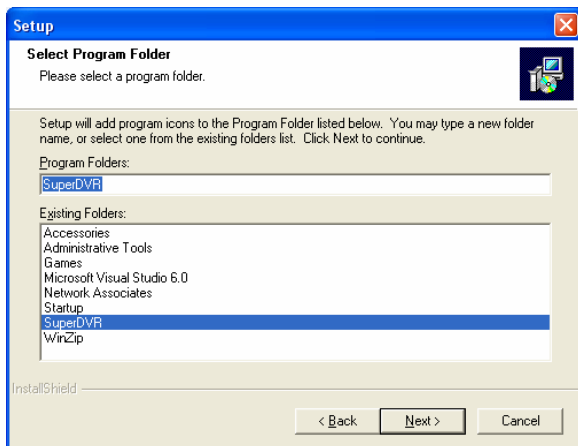


Fig2.35 Register application
Click 'Next',

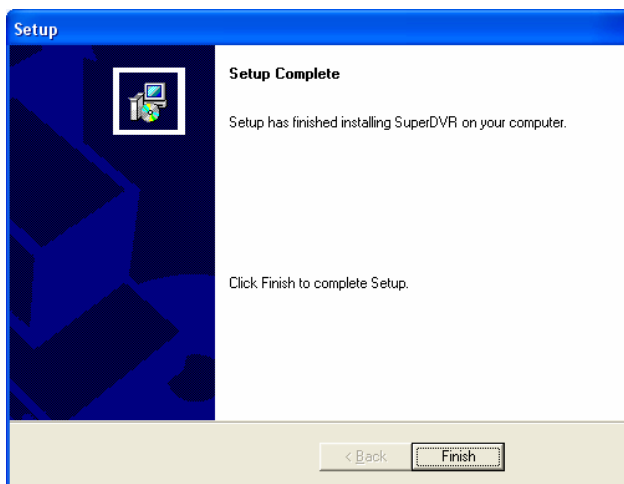


Fig2.36 Driver and application installation finished

Click 'Finish'

Now, after all the processes are finished, restart the computer and launch the surveillance program. It will create a shortcut on the desktop.



Fig2.37 Shortcut of SuperDVR

Notice:

In case users cannot run the SuperDVR program, users restart the computer.

3 Main display Interface

Run SuperDVR program and the main display interface appear as below:



Fig3.1 SuperDVR Main Display Interface

3.1 Display Control Panel

Display Control Panel



Fig3.2 Display control panel

'Display control panel' includes 'Display Mode' buttons and disk free space indicator, 'Auto Dwell' button, 1, 4, 6, 8, 9, 13, 16channels display buttons. Every button has its built-in indicator light. When switch on and off the buttons, the relative indicator lights turn on and off to indicate the working

status.

Notice: Users can judge which buttons are working by the color of the buttons.

Display Modes

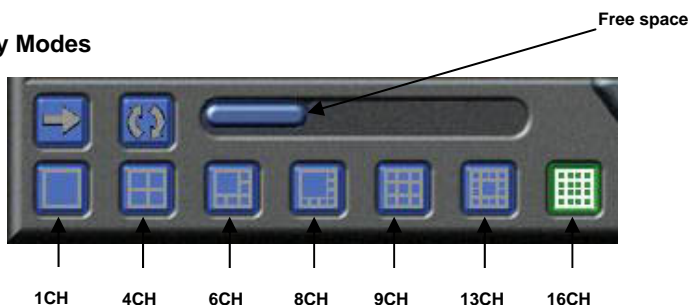


Fig3.3 Display Modes Panel

Notice:


In case the card installed is 4CH CARD, then only 1CH and 4CH buttons are valid.

In case the cards installed are 2 pieces of 4CH CARDS or a piece of 8CH card, then only 1CH, 4CH, 6CH, 8CH, 9CH buttons are valid.


In case the cards installed are 4 pieces of 4CH CARDS or 2 pieces of 8CH cards or a 16CH card, then 1CH, 4CH, 6CH, 8CH, 9CH, 13CH and 16CH buttons are all valid.

Flip Pages

When the display mode is 1CH, 4CH, 6CH, 8CH, 9CH or 13CH,

click , system will display the next page according to the display mode.

Auto Dwell display Mode


In case users want to see all the channels in sequence, then click  and enter Auto Dwell display mode.

Quick Switch

In case the present display mode is 4CH, 9CH or 16CH, by clicking any image or the present display mode is 6CH, 8CH or 13CH, by clicking the bigger image, the display will quickly switch to corresponding single channel display mode. When the present display mode is 6CH, 8CH or 13CH, by clicking any image other than the bigger one, users can change the position of the image with the bigger one. By clicking the single image again, it will return to the former display mode.

3.2 Login



Click , and login window appears. Input the user name and password, the default user name is 'SYSTEM' with no password, users can access to the main interface. Users can change password for SYSTEM and create new user names and passwords once has entered the system.

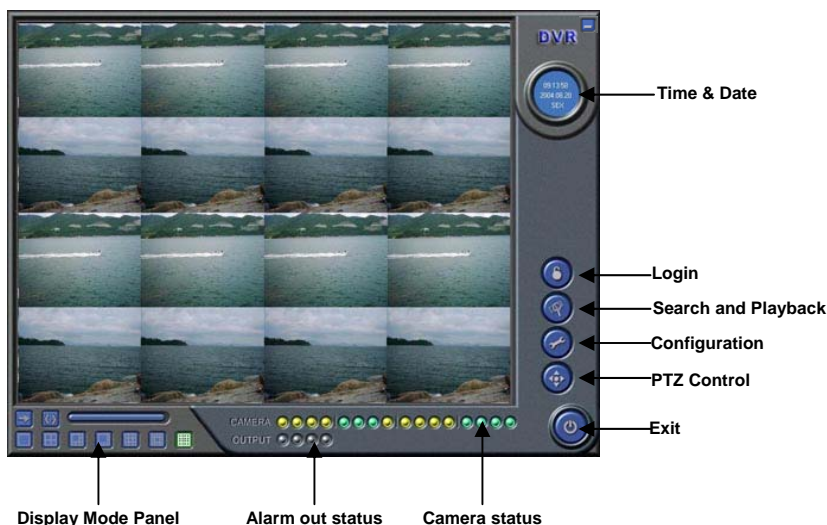


Fig3.4 Main Interface

3.3 Record

Record Modes

According to different record triggering methods, TD series video capture cards offer users with 4 kinds of record modes:

- (1) Schedule record mode (timer)
- (2) Manual record mode
- (3) Motion Detection record mode
- (4) Sensor Alarm record mode

Motion Detection record mode and Sensor Alarm record mode are together called as Alarm Record.

Multiple cameras record

In case users use multiple cameras to record, every camera works separately and the record file also saved separately. The parameters, i.e. camera ID, record date/time and record mode are all saved together with the record file.

Record Setup

	CAM1	CAM2	CAM3	CAM4	CAM5	CAM6	CAM7	CAM8	CAM9	CAM10	CAM11	CAM12
Name	CAM1	CAM2	CAM3	CAM4	CAM5	CAM6	CAM7	CAM8	CAM9	CAM10	CAM11	CAM12
<input type="checkbox"/> Time Stamp	<input type="checkbox"/>	<input type="checkbox"/>	<input type="checkbox"/>	<input type="checkbox"/>	<input type="checkbox"/>	<input type="checkbox"/>	<input type="checkbox"/>	<input type="checkbox"/>	<input type="checkbox"/>	<input type="checkbox"/>	<input type="checkbox"/>	<input type="checkbox"/>
<input type="checkbox"/> Switch	<input type="checkbox"/>	<input checked="" type="checkbox"/>	<input checked="" type="checkbox"/>	<input type="checkbox"/>	<input checked="" type="checkbox"/>	<input checked="" type="checkbox"/>	<input checked="" type="checkbox"/>	<input checked="" type="checkbox"/>	<input checked="" type="checkbox"/>	<input checked="" type="checkbox"/>	<input checked="" type="checkbox"/>	<input checked="" type="checkbox"/>
<input type="checkbox"/> Manual Record	<input type="checkbox"/>	<input type="checkbox"/>	<input type="checkbox"/>	<input type="checkbox"/>	<input checked="" type="checkbox"/>	<input checked="" type="checkbox"/>	<input checked="" type="checkbox"/>	<input checked="" type="checkbox"/>	<input checked="" type="checkbox"/>	<input checked="" type="checkbox"/>	<input checked="" type="checkbox"/>	<input checked="" type="checkbox"/>
Manual Record Frame Rate	6	6	6	6	6	6	6	6	6	6	6	6
<input type="checkbox"/> Schedule Record	<input type="checkbox"/>	<input type="checkbox"/>	<input type="checkbox"/>	<input type="checkbox"/>	<input type="checkbox"/>	<input type="checkbox"/>	<input type="checkbox"/>	<input type="checkbox"/>	<input type="checkbox"/>	<input type="checkbox"/>	<input type="checkbox"/>	<input type="checkbox"/>
Schedule Record Frame Rate	3	3	3	3	3	3	3	3	3	3	3	3
<input type="checkbox"/> Motion Detection	<input type="checkbox"/>	<input checked="" type="checkbox"/>	<input checked="" type="checkbox"/>	<input type="checkbox"/>	<input type="checkbox"/>	<input type="checkbox"/>	<input type="checkbox"/>	<input type="checkbox"/>	<input type="checkbox"/>	<input type="checkbox"/>	<input type="checkbox"/>	<input type="checkbox"/>
Motion Record Frame Rate	6	3	6	6	6	6	6	6	6	6	6	6
<input type="checkbox"/> Sensor Record Frame Rate	<input type="checkbox"/>	<input type="checkbox"/>	<input type="checkbox"/>	<input type="checkbox"/>	<input type="checkbox"/>	<input type="checkbox"/>	<input type="checkbox"/>	<input type="checkbox"/>	<input type="checkbox"/>	<input type="checkbox"/>	<input type="checkbox"/>	<input type="checkbox"/>
Sensor Record Frame Rate	6	6	6	6	6	6	6	6	6	6	6	6
<input type="checkbox"/> Camera Security	<input type="checkbox"/>	<input type="checkbox"/>	<input type="checkbox"/>	<input type="checkbox"/>	<input type="checkbox"/>	<input type="checkbox"/>	<input type="checkbox"/>	<input type="checkbox"/>	<input type="checkbox"/>	<input type="checkbox"/>	<input type="checkbox"/>	<input type="checkbox"/>
Record Quality	medium	lower	medium	medium	medium	medium	medium	medium	medium	medium	medium	medium
Audio In	None	None	None	None	None	None	None	None	None	None	None	None

Fig3.5 Record Configuration Panel

In the 'Record Panel' of the Basic Configuration page, users can set all kinds of necessary parameters for recording.

[Time stamp]: By selecting the options, the record date / time message appears in the record file images.

[Switch]: By selecting the options, users can turn on corresponding cameras. In case there is no camera for some channel, don't select the option so as to save system resource.

[Manual record]: By selecting the options, the relative camera images will be recorded and saved all the time.

[Manual recording frame rate]: Select the record frame rate for manual record mode

[Schedule Record]: Schedule record option.

[Schedule Record Frame Rate]: Select Schedule Record frame rate

[Motion Detection]: By selecting the options, users can set relative channels' record mode as motion detection

[Motion Record Frame Rate]: Select record frame rate for Motion Detection record mode

[Sensor Record Frame Rate]: If sensors are utilized to trigger recording, users can select record frame rate here.

[Camera Security]: The users are divided into three standards: Normal user, Power user and Administrator. By selecting the options, only administrators can see the corresponding channels.

[Record Quality]: Select record image quality here.

[Audio In]: SuperDVR4.3 system can support one channel of microphone audio input signal on the PC motherboard and audio inputs on the card if it has.. Users can choose one video channel associate these audio signals.

Note:







Users can select more than one record mode.


Record Status Panel



Fig3.6 Record Status Panel and Alarm Output Status Panel

Meanings of indicator light colors in row one are as below:

- (1)  Normal State
- (2)  Manual Record State
- (3)  Schedule Record State
- (4)  Motion Detection Record State
- (5)  Sensor Alarm Record State
- (6)  Video Loss State


When the indicator light color turns into  in row two, it means there is alarm output.

Manual Record Mode

Manual Record mode is the most commonly used record mode. In case there is any special event happens, users can select this record mode and record timely.

Note: You can select high frame rate for short time manual record, while select low frame rate for long time Schedule Record.

Sensor Alarm Record Mode

Users can use sensors to trigger sensor alarm record for relative channels. At that time, the record status indicator light will turn red .

Motion Detection Record Mode



It will enable the system to detect image changes and begin to record by activating motion detection and motion alarm record. For instance, somebody opens the door, and the system detects image changes and begins to record, then users can play back the recorded file and find out who opened door. When there is no movement, the system won't record and that's helpful for saving system resource, and convenient for searching for event record file.

The indicator light color in the record status panel is yellow .

Note: Users may need to setup in three places so as to enable motion detection record.

- (1) Select 'Motion Detection' for certain channels in 'Basic Configuration'
- (2) Configure the motion detection areas for certain channels in 'Motion Detection configuration'
- (3) Configure working schedule for certain channels in 'Schedule configuration'

Schedule Record

Users can set working schedule for all kinds of record modes in 'Schedule configuration'. The green light  in record status panel shows the corresponding channel is in Schedule Record mode. Users can change record mode to manual record at any time, and the green light  will

change into blue light



Please refer to chapter 4.4 for details.

Recycling Record

If users enable Recycling Record function and all the selected HDD partitions are full, the former record data will be covered by the latest record data.

Users can set recording storage sequence for HDD partitions. The recording storage will automatically jump to the next partition when it's full. If all the partitions are full and recycling record mode has been enabled, the new data will overwrite the former recorded data automatically. Users can also set HDD minimum storage alarm. Then once the present storage space is less than the minimum storage and recycling record mode hasn't been enabled, the record will automatically stop.

4 System Setup

Click



and enter the main setup interface.

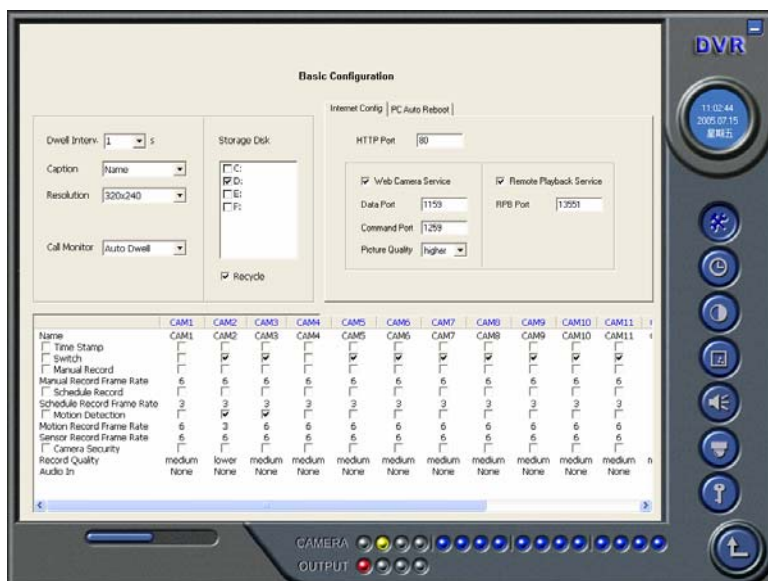


Fig4.1 Basic Configuration

The definitions of the buttons in Fig4.1 are as below:



Basic Configuration



Schedule configuration



Video configuration



Motion Detection Configuration



Alarm Configuration



P.T.Z Configuration




User Configuration



Return

4.1 Basic Configuration



Click  and enter the basic configuration page where users can setup the system or just use the defaults.

Dwell Interv.	<input type="text" value="1"/> s
Caption	<input type="text" value="Name"/>
Resolution	<input type="text" value="320x240"/>
Call Monitor	<input type="text" value="Auto Dwell"/>

Fig4.2 Caption and General Configuration

[Dwell Interval.]: If users enable Auto Dwell function in the main interface page, users can set the dwell time of a page here.

[Caption]: There are four options, None, ID, Name and ID/Name for users to select for all the channels.

'None' means no title;

'ID' means camera numbers, i.e. 1, 2, 3 and so on

'Name' means camera names, i.e. Cam1, Cam2 and so on

'ID/Name' means both camera number and camera name, i.e.

1/Cam1, 2/Cam2 and so on

[Resolution]: There are four options, 320×240 、 352×288 、 352×240 、 640×480 for users to select for all the channels. As the video may have interlace

lines if the users select 640×480 , users may choose ☒ De-Interlace for solve this problem, but it will occupy much more CPU loading.

[Call Monitor] Only TD3016, TD3216 and TD3316 have call monitor function at present. Users can connect another monitor to the card and select the display modes here.

The following is about record data storage. Please check Fig4.3




Fig4.3 Record data storage precept


Above, SuperDVR system shows all the available HDD partitions for users. Users can select one or more of the partitions that will be used in sequence

from up to bottom. Please refer to chapter 3.3.8 to learn more about recycling record.


In the following area in the basic configuration page, users can input the computer user name and password in the relative boxes. Then when restarting the computer system, it will access to the system with the user name and password input in the boxes.

Fig4.4 Computer System Reboot setups

As the windows system may become unstable after a couple of days continue operating, which will cause SuperDVR system unstable? Then users should reboot the computer. Select  PC Auto Reboot and set the interval by day, which will guide the system to reboot automatically according to the setups.

Click  to return to the main display interface.

4.2 Video Configuration

Click  and enter the video configuration page as below. Users can change the values of corresponding items, i.e. contrast, brightness, hue, saturation, auto gain, by drawing the levers on the bars. Click 'Default', and all

the values will return to the default value.

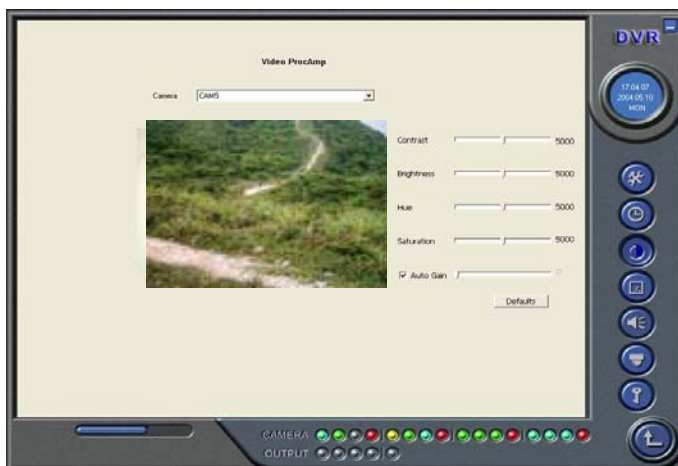


Fig4.5 Video Configuration

Definitions of the setup items:

[Contrast]: set image color contrast

[Brightness]: set image brightness

[Hue]: set image hue


[Saturation]: set image Saturation

[Auto Gain]: users can set it as auto or manual. Only 4CH Card and 16CH card have this function (except TD3316 because of only having manual gain function).

[Default]: load defaults, i.e. set the first four items value as 5000 and the last item value as 0.

4.3 Motion Detection configuration



Click  and enter Motion Detection Configuration page, TD3004, TD3008, TD3016, TD3116, TD3216, TD3101, TD3104 and **TD4104** as below:

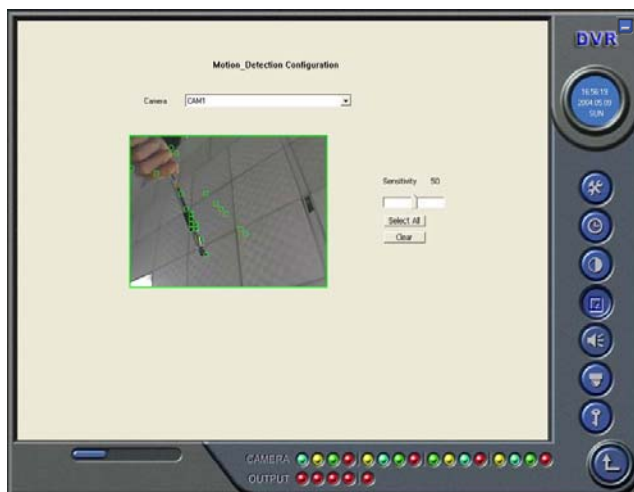


Fig4.6 Motion Detection Configuration

Definition of the setup items:

[Sensitivity]: users can set motion detection sensitivity here.

[Select all]: select all the areas of the channel as detection area

[Clear]: clear all the detection areas and then users can select customized detection areas by cursor.

TD3316:

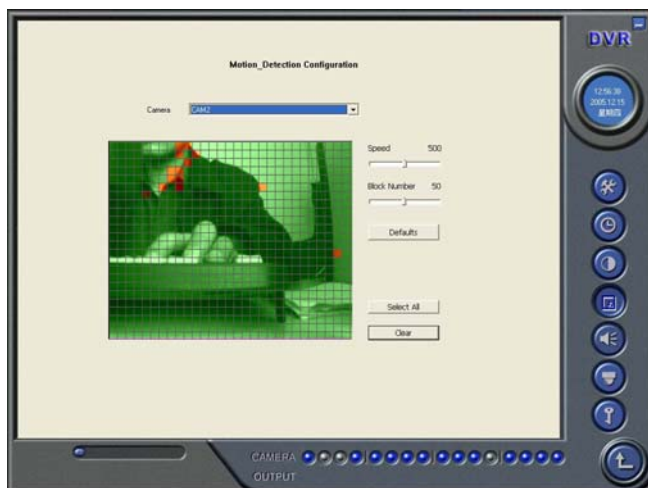


Fig4.7 TD3316's configuration page

[Speed]: motion detection sensitivity.

[Block Number]: set grid's number.

[Defaults]: set as default.

Set Motion Detection Area

In case users want to customize the detection areas for a certain channel, first select the camera, then select 'Clear' and drag the cursor in the box in the left side. Now, users can see a green box appears which shows the motion detection area. Users can select maximum 16 customized areas for each channel.


By click 'Clear', users can clear all the selected areas.

Set Motion Detection Sensitivity

Draw the bar and select a certain value for motion detection sensitivity.

4.4 Schedule configuration



Click  and enter Schedule Configuration page as below:

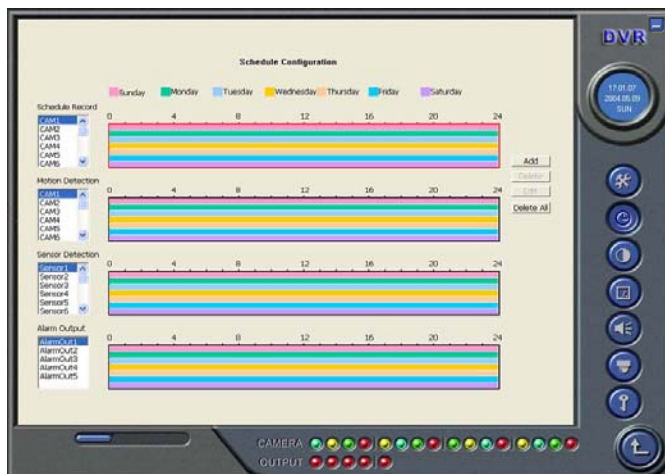


Fig4.8 Schedule Configuration

Our TD series system offers the users with powerful schedule configuration options. Every channel has three kinds of record modes, i.e. schedule record, motion detection record and sensor alarm record. We provide users to set schedules from Sunday to Monday separately for all of the three record modes. Sensor alarm record mode has the highest priority among all record modes. Here users can set schedules for it.

When users need to edit schedule for a channel, first select the camera name in the three record modes group, and select the color bars on the right side, then select 'Edit' to edit schedules. Click 'Add' to add schedule for a certain channel.

Note: the added schedule should not be reduplicate to the former settings.

Click 'Delete' to delete schedule. Click 'Clear All' to delete all the schedules of a certain channel.

See the Fig4.8 and learn how to edit schedules for a channel:

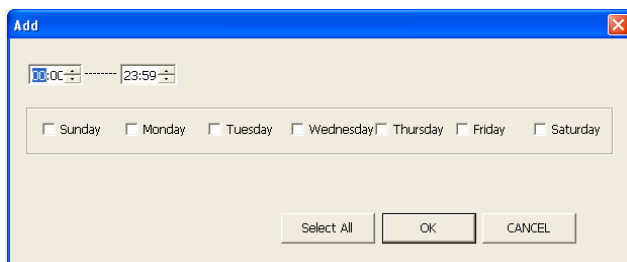


Fig 4.9 Edit Schedule

4.5 Motion Detection Alarm Configuration

Alarm Triggering Conditions Configuration

The system can receive alarm both from local place and network

(1) Local place alarm record triggering conditions configuration

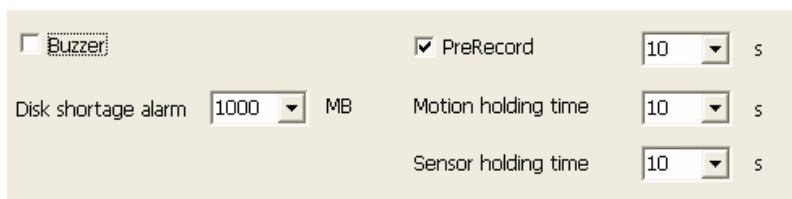


Fig 4.10 Local place alarm triggering conditions configuration

Relative Explanations:

[Buzzer]: Users can select whether to open the computer buzzer if the alarms have been triggered and also select how long the buzzer rings

[PreRecord]: Users can select whether to enable alarm pre-record and

also pre-record time.

[Motion Holding Time]: Motion sensor may detect some movement, only if the movement lasts for a period exceeding the default time, then the alarm record will begin and buzzer beeps.

[Disk Shortage Alarm]: If the HDD available space is less then the set value, the buzzer will beep if 'Buzzer' has been selected.

(2) Alarm output terminal in LAN

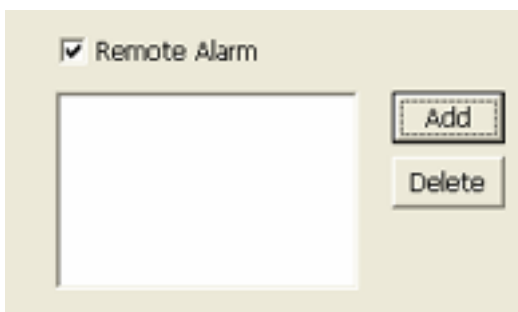


Fig 4.11 Alarm output terminal in LAN

Select 'Remote Alarm', and enter the area as Fig4.10 shows.

Click 'Add' to add alarm output terminals in LAN. Look the figure below:

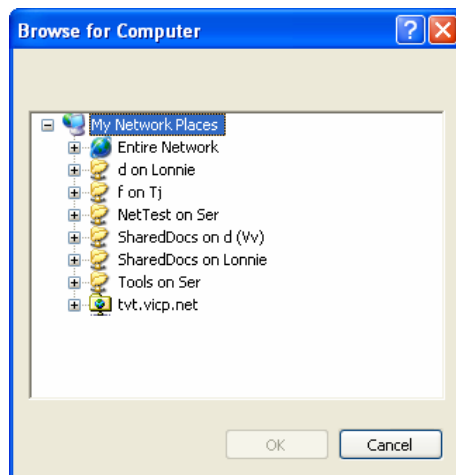


Fig 4.12 Add alarm output terminal in LAN

Find the terminal computer and click 'OK', and users can see the name of the selected terminal will appear in the box as below:

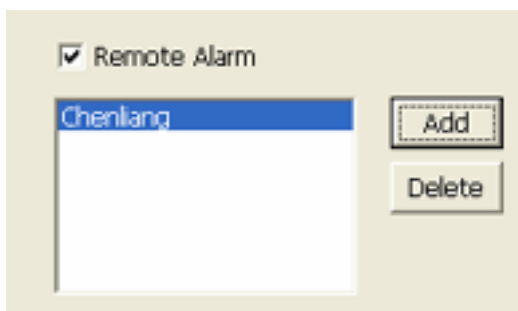


Fig4.13 List of alarm output LAN terminals

Note: this function is only valid in LAN, not in Internet.

Alarm Record

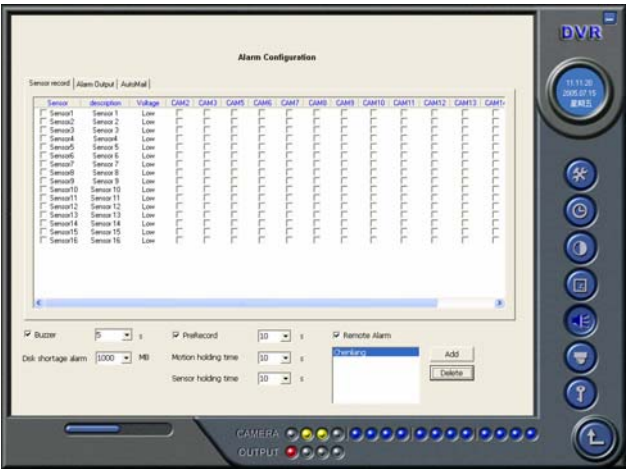


Fig4.14 Alarm trigger method configuration

Every sensor can trigger multiple channels to record. For example, if users select CAM1, CAM4 and CAM5 for Sensor2, then once the sensor is activated, CAM1, CAM4 and CAM5 will begin to record. Users can also select the voltage, high and low, for alarm signals.

Alarm Output

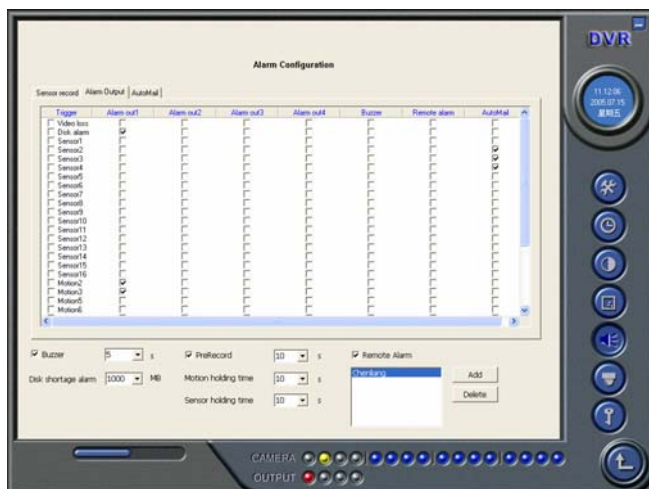


Fig4.15 Alarm output Configuration

[Video Loss]: Users can select alarm output for this option. For example, users select alarm_out1 and alarm_out3 and remote alarm for video loss. Then video loss of any channel will trigger alarm_out1, alarm_out3 to show red light in the Alarm output status panel (refer to Fig3.6 for reference), and the system will give out related warning message to the terminals in List of alarm output LAN terminals (refer to Fig 4.12)

[Disk Alarm]: when HDD available space is less than the set value (refer to Fig4.9), it will trigger selected alarms.

[Sensor 1]: If users have mounted sensors, when the sensors have been activated, then it will trigger the selected output alarms.

[Sensor 2] – [sensor 16] TD3004 card has maximum 4 sensors, and TD3016 and TD3116 card have maximum 16 sensors.

[Motion 1]: Users can set motion detection alarm output by different alarms and remote alarm.


[Motion 2] - [Motion 16] 4CH card has maximum 4 motion alarms, 8CH

card has maximum 8 motion alarms, and 16CH card has maximum 16 motion alarms.

Notes: You should choose our additional alarm device board while using TD3008, TD3216, TD3316, TD4104 cards for alarm I/O.

Auto Mail Function



Press  in the main interface and access to the following Alarm Configuration area where users can make motion detection alarm setup, sensor alarm setup and short of HDD space alarm setup. Now users can select the above-mentioned alarms to be output by Auto Mail.

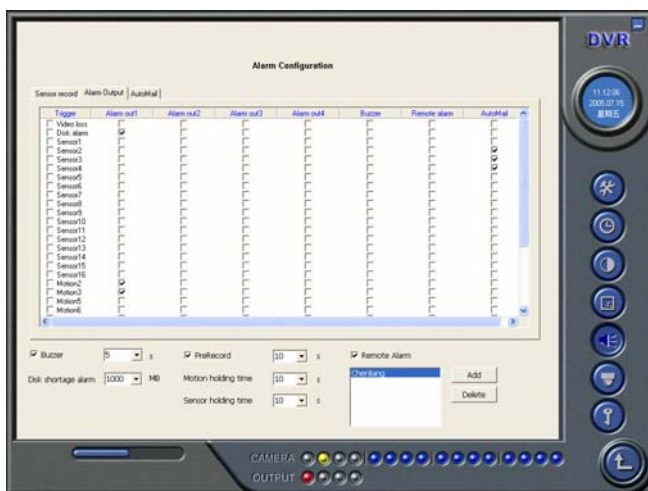


Fig 4.16 Alarm output configuration

Click 'Auto mail' icon on the top left side and enter the following area to make Auto Mail setup:

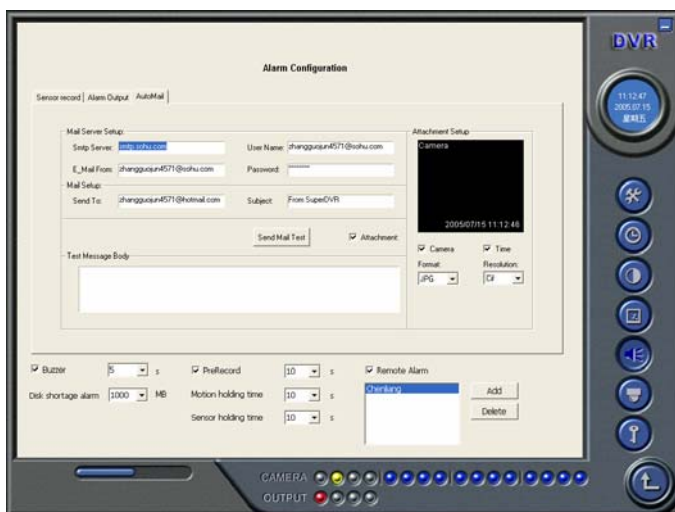


Fig 4.17 AutoMail setup interface

In this area, users can set receiver and sender's E-mail SMTP server and address. Note: the address of receiver and sender can be the same.

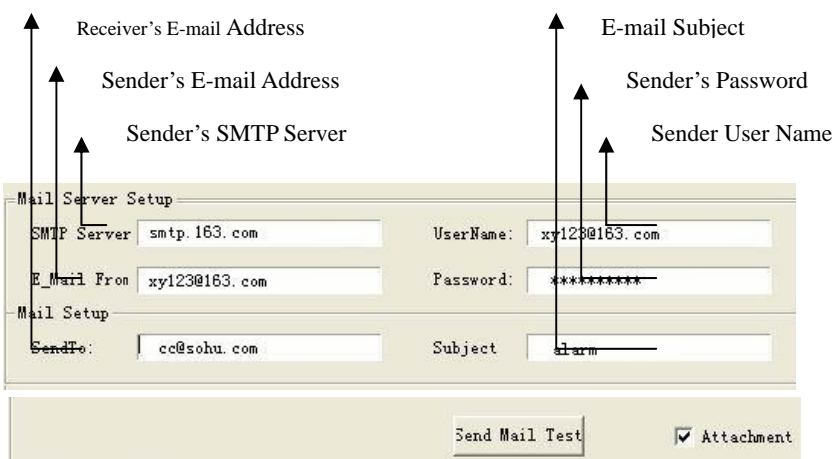


Fig.4.18 Auto Mail Setup

To test the settings, click 'Send Mail Test'. If all settings are okay, message 'Message Sent Successfully' will pop up. If some settings are wrong, there will pop up corresponding warning message.

Enable 'Attachment', then the present image when an alarm triggered will be sent to appointed mailbox.

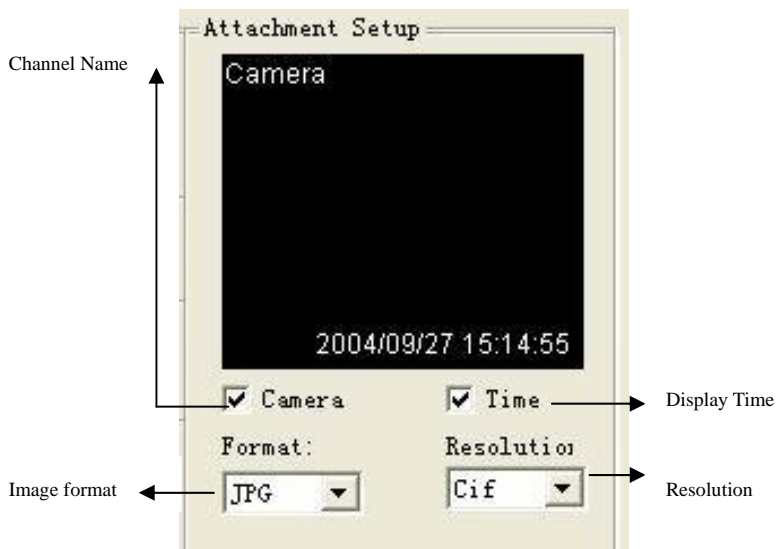



Fig 4.19 Attachment Setup

Note: for every alarm event, only one picture will be sent.

Users can put into a short message to make introduction of the Auto Mail, so the receiver will know what happened.

4.6 P.T.Z Control Configuration

Click  and enter the following area:

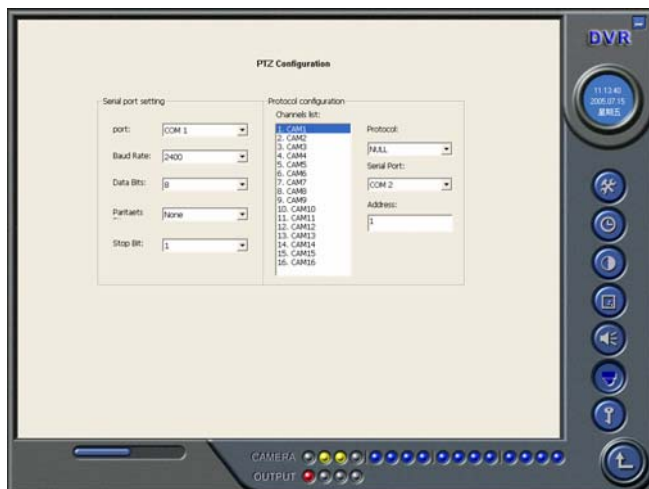


Fig4.20 PTZ configuration panel

Protocol Setup

Users can select different protocols, serial port number for P.T.Z devices.

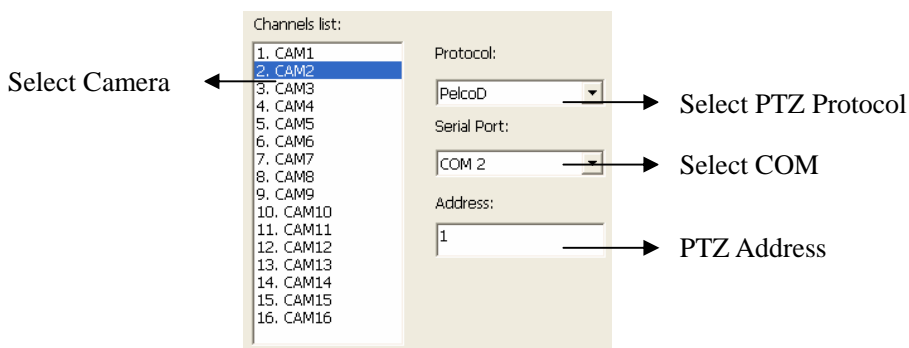


Fig4.21 P.T.Z protocol setup

Relative Definitions:

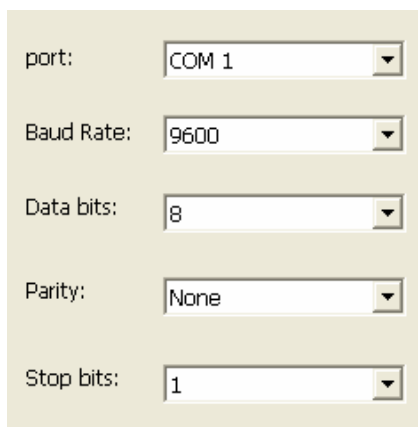
[Port]: users can set serial port number

[Protocol]: P.T.Z device communication protocol

[Address]: P.T.Z device communication address

Serial ports setup

Users should firstly enable the P.T.Z control function of a certain camera and select a port number in P.T.Z Protocol Setup (refer to Fig4.22), and then set corresponding parameters in the area below:



The image shows a configuration window for P.T.Z serial port setup. It contains five rows, each with a label and a dropdown menu. The labels are 'port:', 'Baud Rate:', 'Data bits:', 'Parity:', and 'Stop bits:'. The dropdown menus show the following values: 'COM 1', '9600', '8', 'None', and '1' respectively.

port:	COM 1
Baud Rate:	9600
Data bits:	8
Parity:	None
Stop bits:	1

Fig4.22 P.T.Z serial port setup

Relative explain:

[Port]: users can set port number

[Baud Rate]: set P.T.Z device Baud Rate, default value is 9600

[Data bits]: default value is 8

[Parity]: odd and even parity bit, default Null


[Stop Bits]: default value is 1

Notice:

Users should look into the P.T.Z device and get the Baud Rate,

Protocol, and Address first, then set their values accordingly.

4.7 Users Configuration

Click  and access the following area:

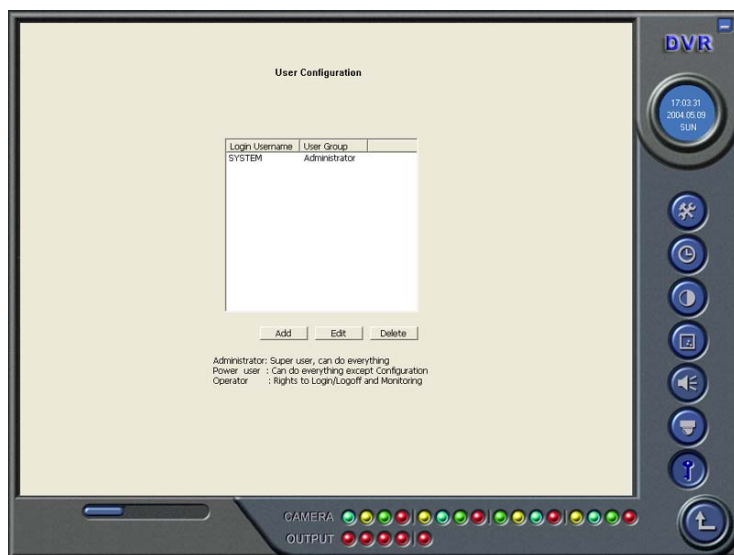


Fig4.23 User configuration

After installing the SuperDVR system, it will automatically create an administrator user of which user name is SYSTEM with no password. Users can use this user name to log in the system and 'Add', 'Edit' and/or 'Delete' users' parameters.

Change User rights

Select a user in User Configuration area (refer to Fig4.23), and click 'Edit' and enter Edit User area, as below:

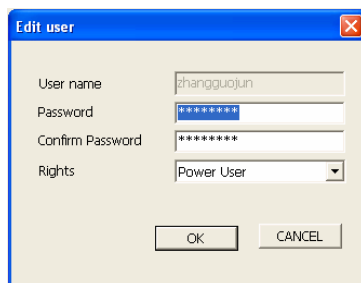


Fig4.24 User password and rights edit

Users can edit user's password and rights here, but not the user name.

Note: The system offers three kinds of rights:

Administrator: this kind of user of the highest rights to change all the settings and playing back.

Power user: this kind of user cannot access Basic Configuration and change settings, but has all the other rights of Administrator.

Normal: this kind of user can only access SuperDVR main display interface (refer to Fig3.1)

Notice:

Administrators can change Power users and Normal users' rights, but can't change other administrators' rights.

Add User

Click 'Add' in User Configuration (refer to Fig4.25), and access the following area:

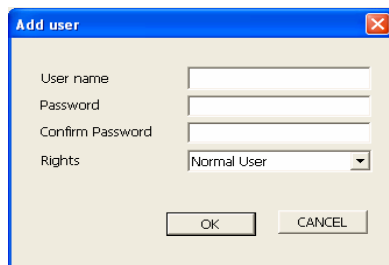


Fig4.25 Add user

Input user name, password, confirm password and select user rights, and then click 'OK'.

Delete User

Select the user name in User Configuration (refer to Fig4.26), and click 'Delete', and confirm delete. See below:

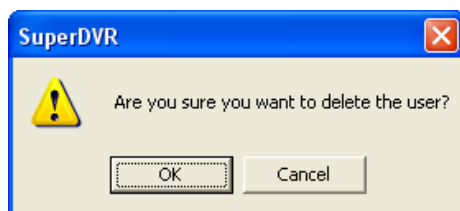


Fig4.26 Confirm delete user

5 P.T.Z control




Click  in the SuperDVR main display interface (refer to Fig3.1) and access to the following area:



Fig5.1 P.T.Z control interface

Users can control P.T.Z devices by the function buttons on the right side, see as below:

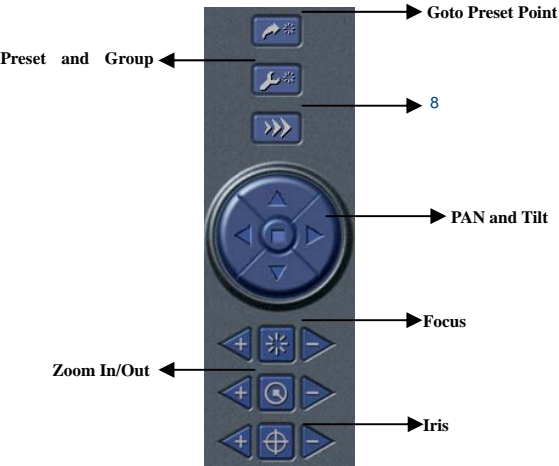




Fig5.2 P.T.Z Control function buttons panel

In the upper circle, there are five function buttons, i.e. upward button, downward button, leftward button, rightward button and stop button. The other buttons are Focus buttons (+ and -), Zoom buttons (+ and -), Iris buttons (+ and -). Click  and  to increase and decrease the corresponding values.

When users need to utilize P.T.Z control, first enter P.T.Z Control Interface (refer to Fig5.1), and click the corresponding channel (users can see a red fringe around the channel), then users can begin to control the enabled P.T.Z control enabled camera.

Notice:

After pressing left mouse button on any function button in P.T.Z Control Function Buttons Panel (refer to Fig5.2), PTZ device starts moving, when user releases it, PTZ device stops moving.

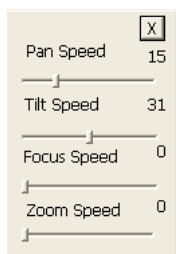


Fig 5.3 Speed adjustment


Users can select different Pan speed, Tilt speed, Focus speed and Zoom speed for P.T.Z devices.

[Pan Speed]: set horizontal rotating speed

[Tilt Speed]: set vertical rotating speed

[Focus Speed]: set camera focus speed

[Zoom Speed]: set zoom in/ zoom out speed

Click  and a pop-up window will appear; users can choose different preset or group set.

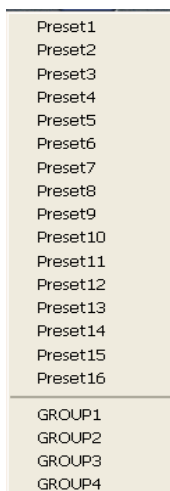



Fig 5.4 Preset and group select

Click  to set Preset point and change Preset point name. Every Group includes multiple Preset points. In case users select preset1, preset2 and preset3 for group1, preset1, preset2 and preset3 will be automatically accessed in sequence after users select group1 for auto scout.

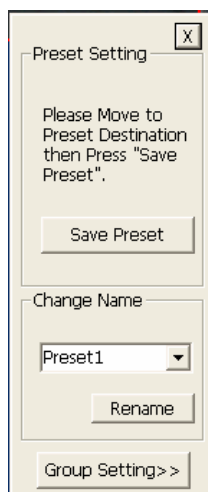
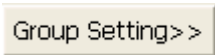


Fig 5.5 Preset

Click , a pop-up window as following will appear:

[Dwell]: users can set the dwell time of a page here.

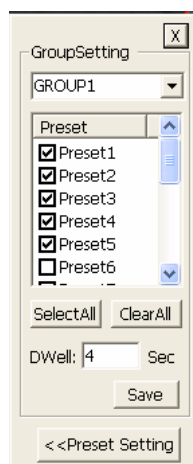



Fig 5.6 Group configuration

6 Record Search and Playing back



Click  in the SuperDVR Main Display Interface (refer to Fig3.1) and access to the following areas:

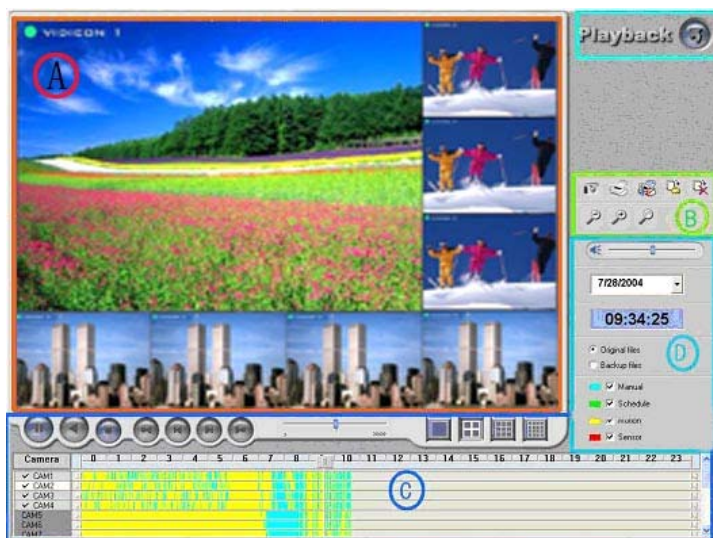



Fig6.1 Search and playing back Interface

This interface is divided into 4 parts, i.e. record search area, record playing back area, record play area and other functions area.



Press  and return to the live surveillance status.

6.1 Record Search

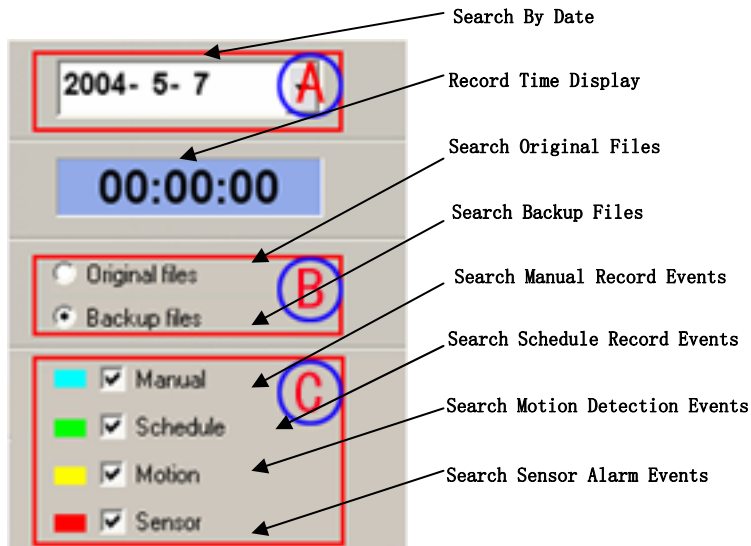


Fig6.2 Record search area

A, B and C marks the areas of three search methods.

A: Search by date (range from Jan 1st, 1971 till now)

B: Search in backup file and original file

C: Search by record mode. This is useful when user wants to look through some **important events**.

Users can select one or above of the three searching methods to search for needed record file.

6.2 Record Playing back and Control

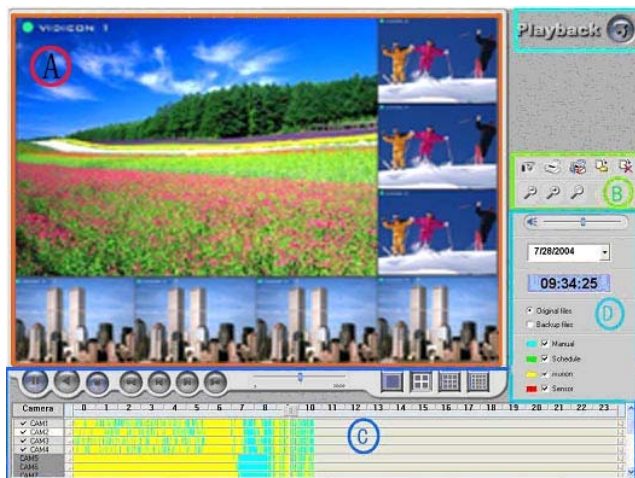


Fig6.3 Record playing back and control

Explain of the button function:



: Play / Pause



: Stop



: Play backwards. This button is valid when playing back by single channel



: Previous Section. This button is valid when playing back by single

channel



: Next Section. This button is valid when playing back by single channel



: Previous Frame. This button is valid when playing back by single

channel playing back pause mode



: Next Frame. This button is valid when playing back by single channel

playing back pause mode

Users can select suitable play speed in the area as below:



Fig6.4 Play Speed Controller

The following area shows the record files of different channels:





Camera	0	1	2	3	4	5	6	7	8	9	10	11	12	13	14	15	16	17	18	19	20	21	22	23
✓ CAM1	00:00:00	00:00:01	00:00:02	00:00:03	00:00:04	00:00:05	00:00:06	00:00:07	00:00:08	00:00:09	00:00:10	00:00:11	00:00:12	00:00:13	00:00:14	00:00:15	00:00:16	00:00:17	00:00:18	00:00:19	00:00:20	00:00:21	00:00:22	00:00:23
✓ CAM2	00:00:00	00:00:01	00:00:02	00:00:03	00:00:04	00:00:05	00:00:06	00:00:07	00:00:08	00:00:09	00:00:10	00:00:11	00:00:12	00:00:13	00:00:14	00:00:15	00:00:16	00:00:17	00:00:18	00:00:19	00:00:20	00:00:21	00:00:22	00:00:23
✓ CAM3	00:00:00	00:00:01	00:00:02	00:00:03	00:00:04	00:00:05	00:00:06	00:00:07	00:00:08	00:00:09	00:00:10	00:00:11	00:00:12	00:00:13	00:00:14	00:00:15	00:00:16	00:00:17	00:00:18	00:00:19	00:00:20	00:00:21	00:00:22	00:00:23
✓ CAM4	00:00:00	00:00:01	00:00:02	00:00:03	00:00:04	00:00:05	00:00:06	00:00:07	00:00:08	00:00:09	00:00:10	00:00:11	00:00:12	00:00:13	00:00:14	00:00:15	00:00:16	00:00:17	00:00:18	00:00:19	00:00:20	00:00:21	00:00:22	00:00:23
CAM5																								
CAM6																								
CAM7																								

Fig6.5 Record Files Browser

The upper bar shows the hours in a whole day. Click the bar, and it will be magnified 10 times, therefore users can see the detailed time marks. When searching for a certain section of the file, users can draw the scrolling-bar to the area that most likely contains the needed section. If necessary, click the bar once and see the magnified time marks for precise search.

The left side shows the available channels. When a certain channel has been selected for playing back, the background color will be highlighted, or it's dark gray, and a tick sign will appear beside the channel title.

The main area at the center gives details of the record files. Different colors of the bar show different kinds of record modes of the files. The following are the definitions of the color bars:

- | | |
|--|--|
|  Manual Record Events |  Schedule Record Events |
|  Motion Detection Record Events |  Sensor Alarm Record Events |



Click  to play selected record files. The system offers 1Ch, 4CH, 9CH and 16CH playing back modes. The following is multiple channels playing back control area:



Fig6.6 Multiple Channels Playing back Control

The system default playing back mode is one channel. That's Camera1.

In case users need to change to other channels, then click  and the following channel configuration window will appear, as below:

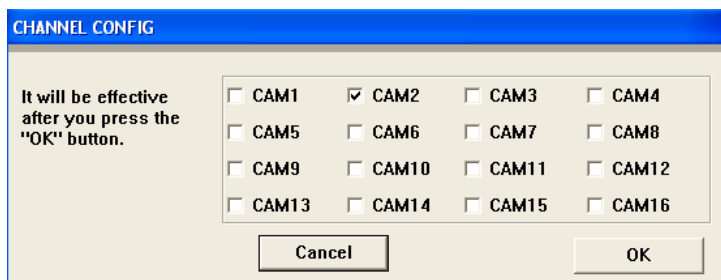


Fig6.7 Channel Configuration Window for 1 Channel Playing back Mode


Note:

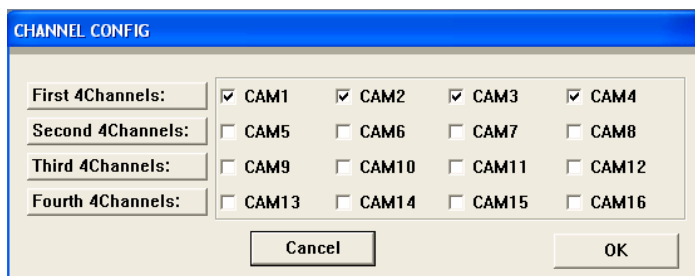
Take 16CH card for example. But in fact, 4 pieces of 4CH cards can make the same effect.

Users can select one channel from all the available channels for playing back.

In case user needs to play back 4 channels at the same time, then



click , and the following channel configuration window will appear, as below:



First 4Channels:	<input checked="" type="checkbox"/> CAM1	<input checked="" type="checkbox"/> CAM2	<input checked="" type="checkbox"/> CAM3	<input checked="" type="checkbox"/> CAM4
Second 4Channels:	<input type="checkbox"/> CAM5	<input type="checkbox"/> CAM6	<input type="checkbox"/> CAM7	<input type="checkbox"/> CAM8
Third 4Channels:	<input type="checkbox"/> CAM9	<input type="checkbox"/> CAM10	<input type="checkbox"/> CAM11	<input type="checkbox"/> CAM12
Fourth 4Channels:	<input type="checkbox"/> CAM13	<input type="checkbox"/> CAM14	<input type="checkbox"/> CAM15	<input type="checkbox"/> CAM16

Cancel OK


Fig6.8 Channel configuration dialog for 4-channel playing back mode

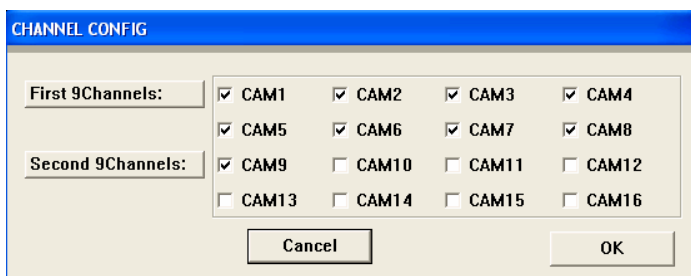
Users can select any four channels from all the available channels for playing back.

The system offers quick select methods for users. For example: by selecting 'Third 4 Channels' Camera9, Camera10, Camera11, and Camera12 will be quickly selected simultaneously.

In case user need to play back 9 channels at the same time, then



click , and the following channel configuration window will appear, as below:



First 9Channels:	<input checked="" type="checkbox"/> CAM1	<input checked="" type="checkbox"/> CAM2	<input checked="" type="checkbox"/> CAM3	<input checked="" type="checkbox"/> CAM4
Second 9Channels:	<input checked="" type="checkbox"/> CAM5	<input checked="" type="checkbox"/> CAM6	<input checked="" type="checkbox"/> CAM7	<input checked="" type="checkbox"/> CAM8
	<input checked="" type="checkbox"/> CAM9	<input type="checkbox"/> CAM10	<input type="checkbox"/> CAM11	<input type="checkbox"/> CAM12
	<input type="checkbox"/> CAM13	<input type="checkbox"/> CAM14	<input type="checkbox"/> CAM15	<input type="checkbox"/> CAM16

Cancel OK


Fig6.9 Channel configuration window for 9-channel playing back mode

Users can select any 9 channels from all the available channels for

playing back. Users can also use the quick select methods by the system.

In case user needs to play back 16 channels at the same time, then



click , and the following channel configuration window will appear, as below:

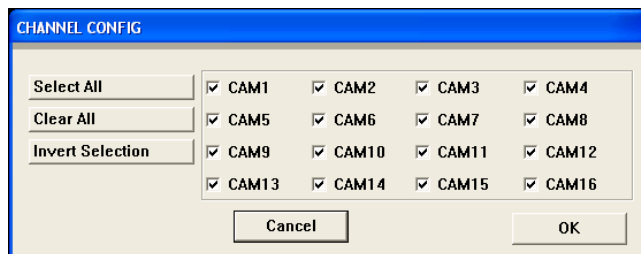


Fig6.10 channel configuration window for 16-channel playing back mode
Then click 'OK' to play back.

Tips:

Click any channel and magnify it to see the single channel. Click again to return to the former playing back mode.

6.3 Other Functions

Record File Backup



Click  and enter the following menu:

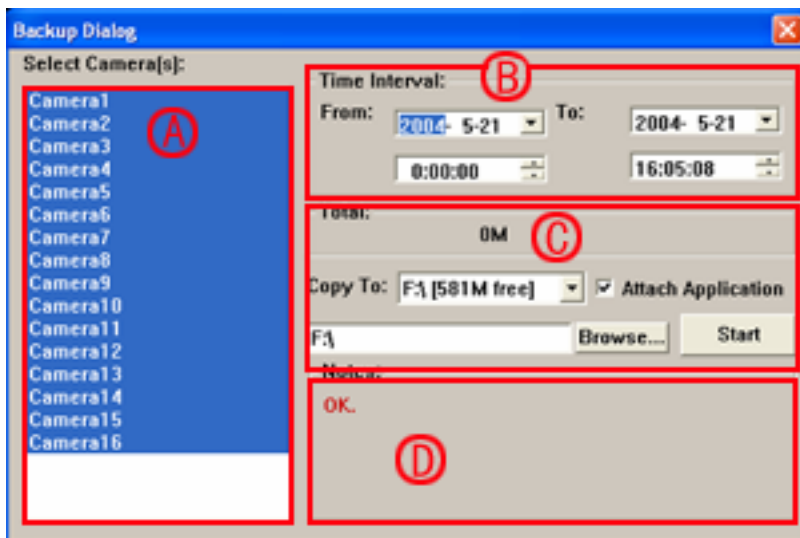


Fig6.11 Recorded files backup

Users can select corresponding cameras and copy the record files to another path in this area. This is the file backup function of the system.

The interface is divided into four areas:

A: Camera Selection Area

B: Time and Date Selection Area

C: Operation Area

D: Information Area

In A area, users can select one or more cameras;

In B area, users can set start time/date and end time/date, and then backup the files recorded by channels selected in A area by the time interval;

In C area, users can set backup path

Click 'Start' to backup files.

Delete Record Files



Click  and the following window will appear:

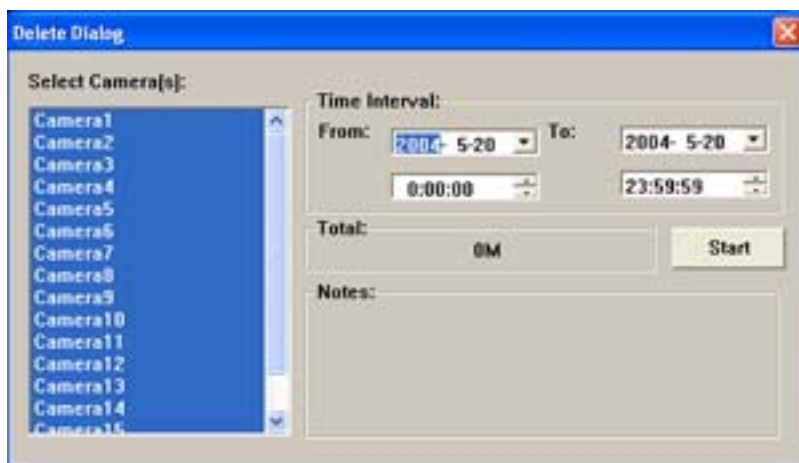


Fig6.12 Delete recorded files

Users first select the channel on the left side, and then select start time/date and end time/date of the record files, click 'Start' to delete files.

Capture Pictures

The definitions of the function buttons are as below:



: Capture picture



: Print setup



: Print captured picture

Notice:

Only in one channel playing back pause mode (refer to Fig6.1) this



function is valid.

When in single channel playing back pause mode, automatically the following color control panel (Fig6.12) will appear, by which user can make

color rectification for the present channel, including brightness, contrast, saturation and hue, and press 'Default' to recover to the original settings.

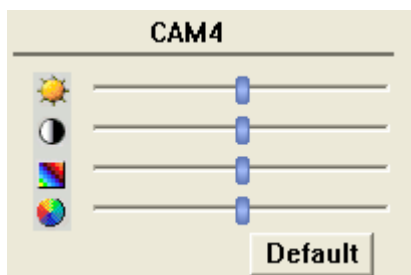



Fig6.13 Color control panel

When in the single channel playing back pause mode, click  and the following window will appear as below:

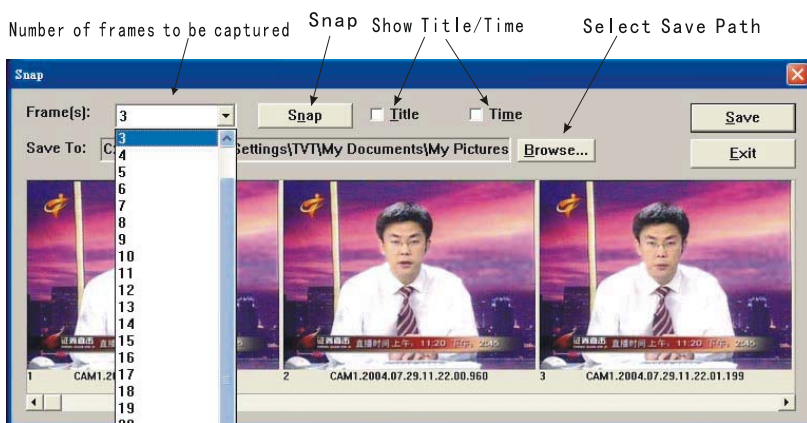


Fig6.14 Capture multiple images in sequence

Select path and click 'Save' to save the picture. User can also print the images that have been captured.



Click and make corresponding print setup as below:

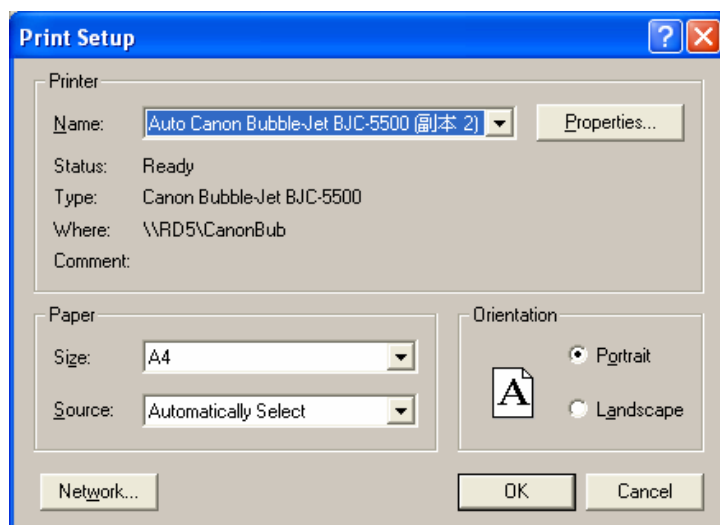


Fig6.15 Print setup



Click users can have print preview as below:



Fig6.16 Print preview












Select  **Position** and then click  or  to move the picture upward, downward, leftward and rightward. Select  **Size** and then click ,  to zoom in and out the image. Press  to return to the original settings. Press 'Print' in the print preview window, users can print the image directly.

Image Zoom In / Out

When in single channel playing back state, the zoom control icons  will appear. Select  and click on the channel will zoom out the image. By clicking continuously, the image will be zoomed out continuously. Select  and do the some operations to get the opposite effect. Click  and recover the original size. Take the following three pictures for example,

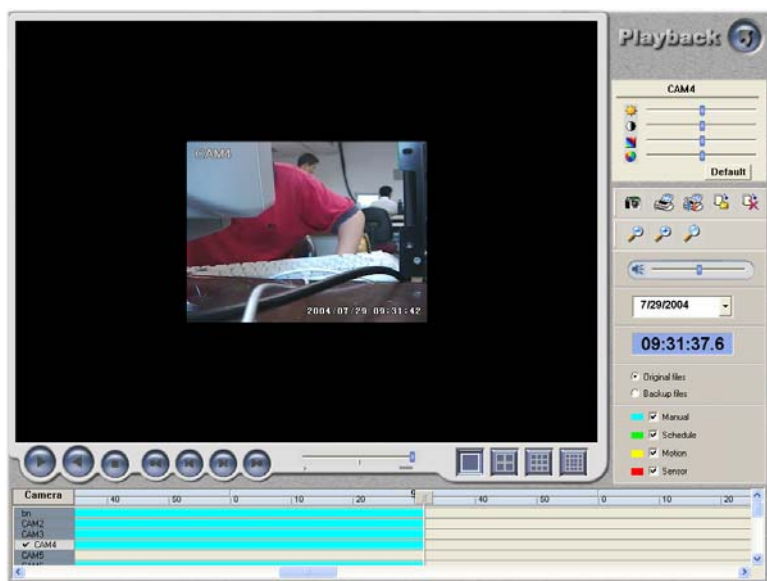


Fig6.17 Example: original size

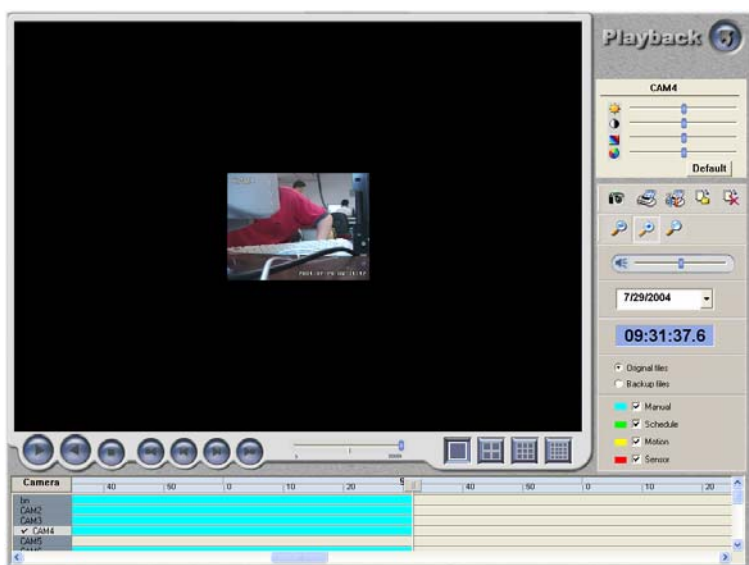


Fig6.18 Example: zoomed out



Fig6.19 Example: zoomed in

7 Remote Surveillance and Playing back

7.1 Remote Live Surveillance

Our TD series surveillance system supports Remote Surveillance through LAN, Internet and Intranet. Simply enable web cam function of the system on a computer which is connected to Internet, and the computer system will become an Internet web cam server. On any other computer that

connects to Internet or the same LAN network, input the SuperDVR server address in IE browser, the end users can get high quality real time image from the server and also control the P.T.Z devices.

Remote Surveillance Server Configuration

Users should firstly enable the Web Camera Services in Basic Configuration (refer to Fig4.1) and set other settings as below:

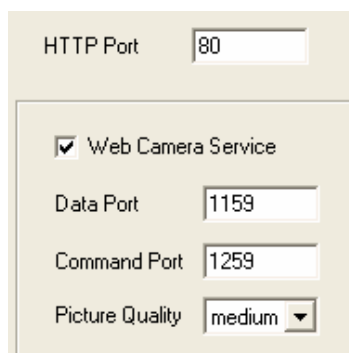
A screenshot of a web-based configuration window for a web camera service. The window has a light beige background. At the top, there is a label 'HTTP Port' followed by a text input field containing the number '80'. Below this is a section with a checked checkbox labeled 'Web Camera Service'. Underneath the checkbox are three more settings: 'Data Port' with a text input field containing '1159', 'Command Port' with a text input field containing '1259', and 'Picture Quality' with a dropdown menu currently showing 'medium'.

Fig7.1 Web cam server configuration

[HTTP Port]: Web service & download service port, default value is 80

[Data Port]: data transmission port, default value is 1159

[Command Port]: control command port, default value is 1259

[Picture Quality]: default value is higher

Remote Surveillance Client-side Setup

On the client-side, users should firstly install the WebCam program. And the following is the detailed information.

Input the WebCam server IP address in Internet Explorer and the following page appears:

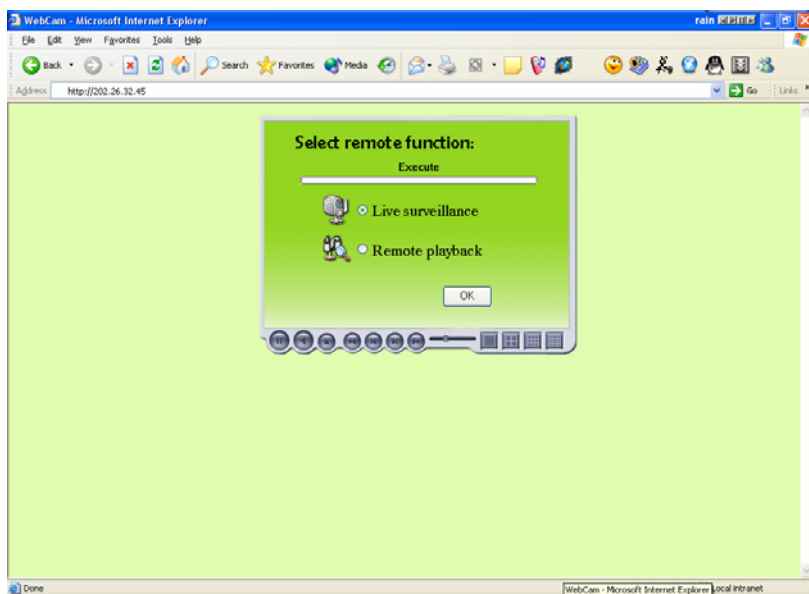


Fig7.2 Remote surveillance and playing back services selection

[Live Surveillance]: this option is for users to see remote live view.

[Remote Playing back]: this option is for users to play back recorded files.

Notice:

In case the HTTP port setting is not 80 (80 is the default setting, commonly use), and when input the server IP address, users should add the port number after the IP address. For example, the server IP address is 211.148.96.234, and the port number is 81, then users should input <http://211.148.96.234:81> .

Select Live Surveillance, and click 'OK' to install Remote Surveillance client-side program as below. In the next chapter, we will learn more about Remote Playing back.

When connecting to the server for the first time, then the following window will pop-up:

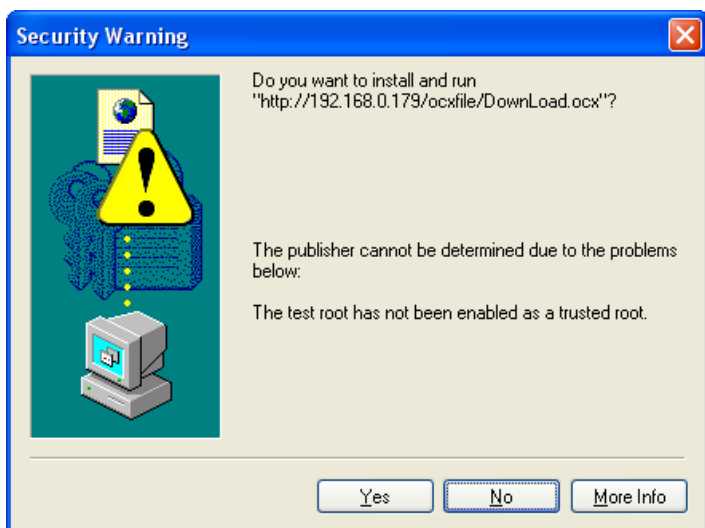


Fig7.3 Inquiry for installing WebCam downloading component

Notice:

If users have already installed client-side program before and SuperDVR version has not been changed on the server, after inputting server address in IE browser, Fig7.9 will come out without downloading or installing WebCam.

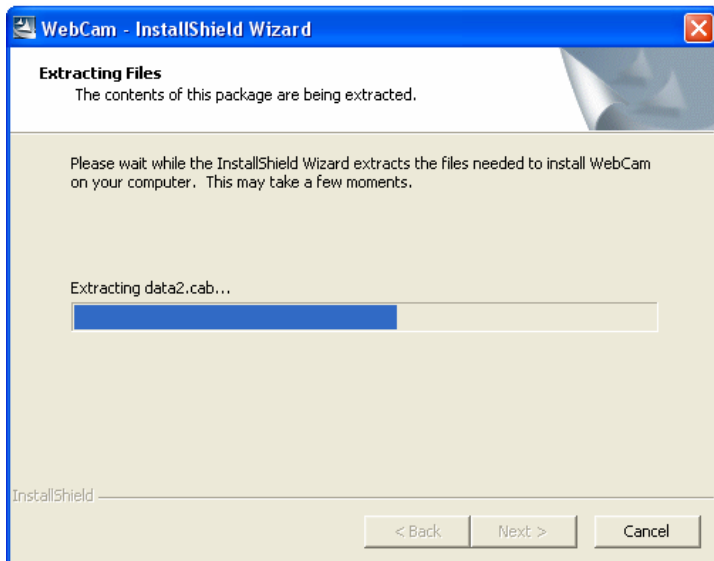


Fig7.4 WebCam client-side driver initializing

After initialization has been completed, WebCam will be installed automatically.



Fig7.5 WebCam installation

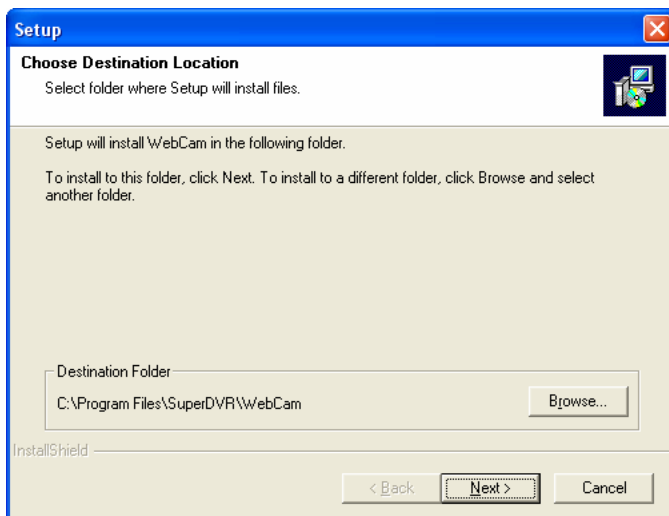


Fig7.6 Default install path

Users can choose path by clicking 'Browse'. Click 'Next' to continue:

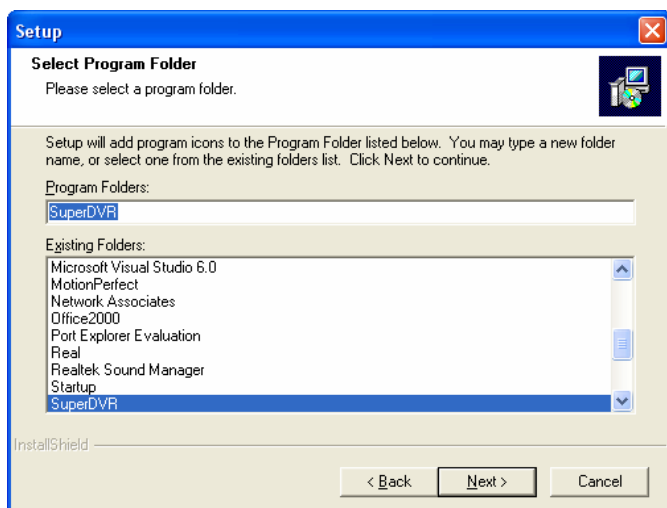


Fig7.7 Register program folder name

Click 'Next' after input the folder name or select the default name, and then 'Finish' installation as below:

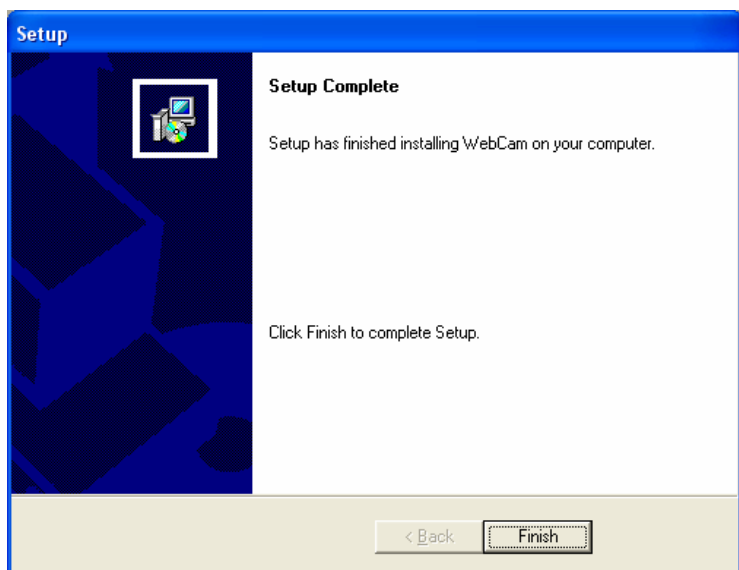



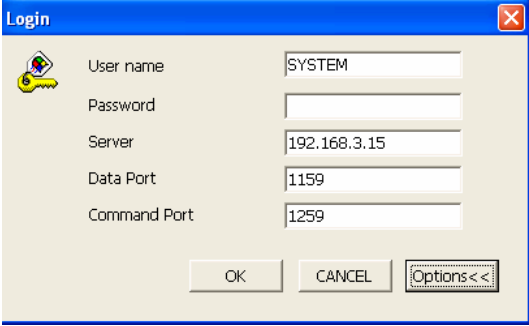
Fig7.8 Installation success

Then the WebCam main interface will appear as below:



Fig7.9 WebCam main interface

Click  and input user name and password, as below:

A login dialog box titled "Login" with a blue header bar and a red close button. It contains a yellow key icon on the left. The form has five input fields: "User name" (containing "SYSTEM"), "Password" (empty), "Server" (containing "192.168.3.15"), "Data Port" (containing "1159"), and "Command Port" (containing "1259"). At the bottom are three buttons: "OK", "CANCEL", and "Options<<".

Field	Value
User name	SYSTEM
Password	
Server	192.168.3.15
Data Port	1159
Command Port	1259

Fig7.10 Login webcam

Click 'Options' and enter the advanced setting area. Users can modify default Server IP、Data Port and Command Port .

Note:

The default User name is SYSTEM without password. Users can set user name and password at the server end (refer to Fig4.23).

After logging into server, you will get the first channel video from server, and you can adjust screen mode just like SuperDVR, the bellow is the WebCam surveillance mode interface.



Fig7.11 WebCam surveillance state

Alarm state monitor and PTZ control are all same as SuperDVR, we would not need to give detail explanation here.

7.2 Remote Playing back

Remote Playing back server Configuration

For using our powerful remote playing back function, users should first enable Web Cam service and Remote Playing back Service in Basic Configuration (refer to Fig4.1 and Fig7.12).

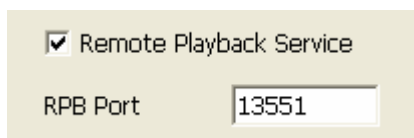


Fig7.12 Remote playing back service configuration

[RPB Port]: the default value is 13551

Note:

Users can enable remote playing back service without running the SuperDVR. Just enter the installation folder of SuperDVR, and activate MediaServer, users can also enable the RPB service.

Once the remote playing back service has been enabled, there will be an icon on the taskbar to remind users the service has been activated.



Fig7.13 Remote playing back service activated

Remote Playing back Client-side Setup

Users should also first download and install playing back program. This chapter will guide users how to make it.

Input server address in IE browser, and the following interface appears:

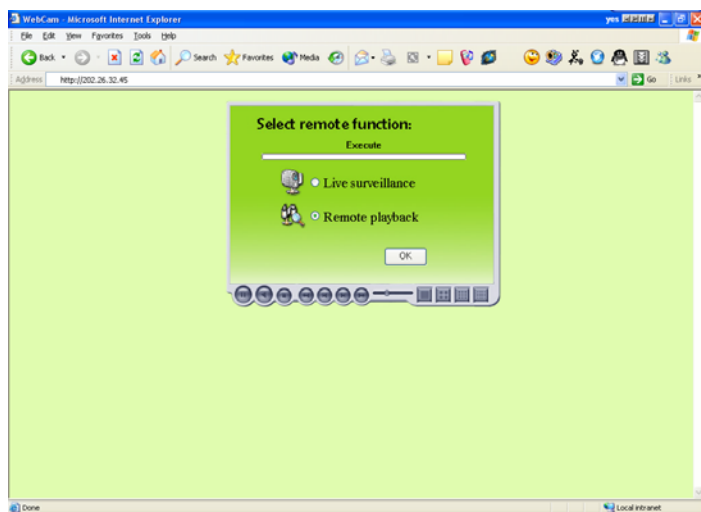


Fig7.14 Remote surveillance and playing back services selection
Select 'Remote playing back' and click 'OK',

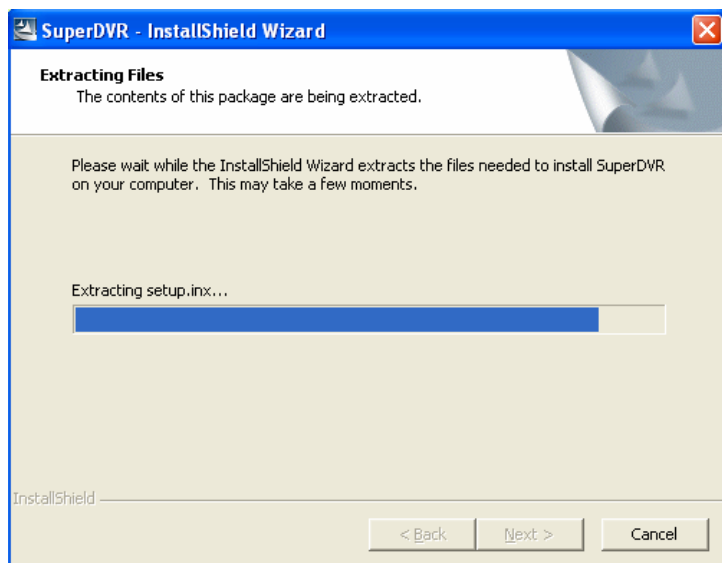


Fig7.15 installing remote playing back program

Notice:

In case users have already installed the remote playing back program before and SuperDVR version has not been changed, there is no need to download and install it again, it will go to Fig7.20 directly.

After initialization has been completed, users need to install the program. First select installation path as below:

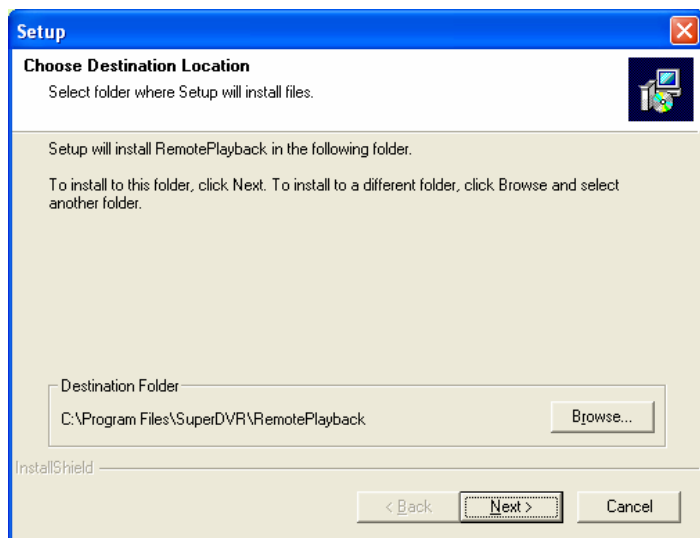


Fig7.16 Default install path

Users can set another path by clicking 'Browse'. Click 'Next' to continue:

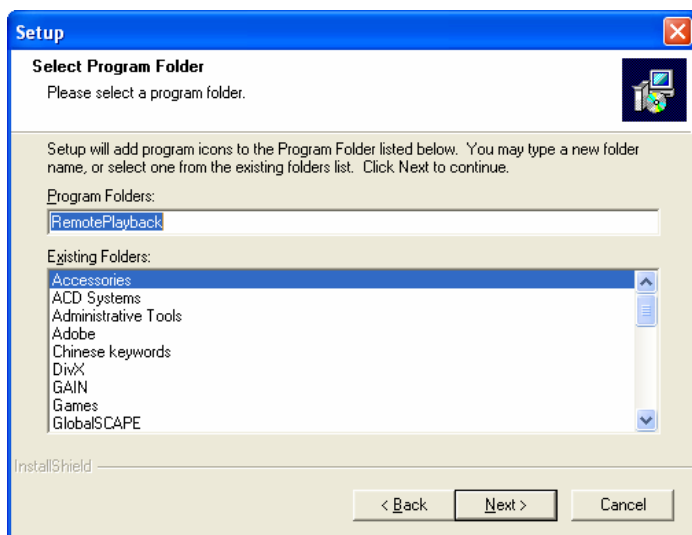


Fig7.17 Register program folder name

Click 'Next' after inputting the folder name or selecting the default name, then the following figure appears:

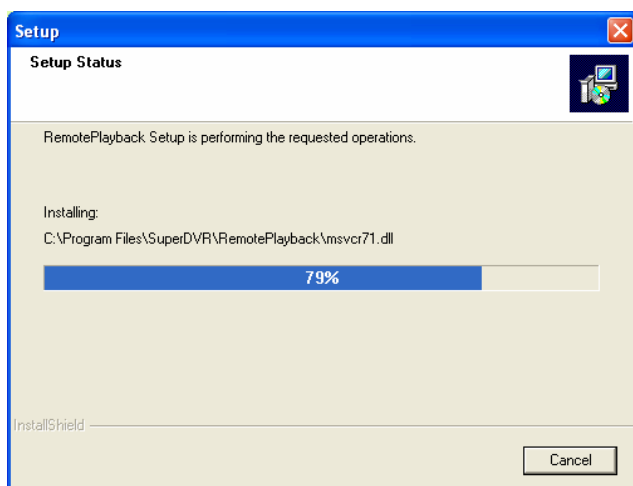


Fig7.18 Playing back program installation process rate

And then click 'Finish' to finish installation as below:

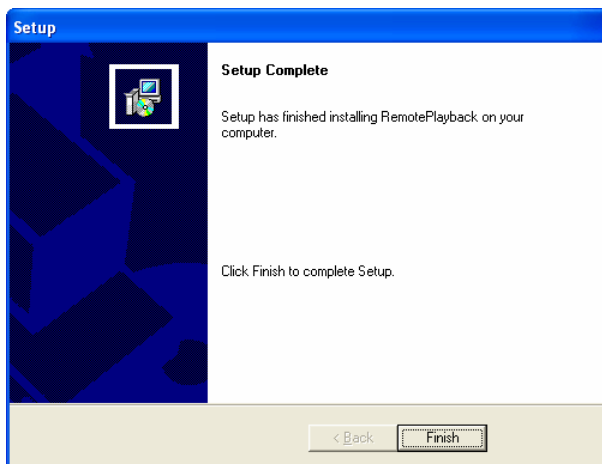


Fig7.19 Installation success

Then the playing back client-side main interface will appear as below:



Fig7.20 Remote playing back client-side main interface
Corresponding Explanations:



: Log in



: Minimum



: Setup



: Exit



: Play



: Pause



: Begin / Stop record



: Slow down playing speed




: Accelerate playing speed



: Play at the original speed

Remote Playing back Configuration and Control

7.2.1.1 Setup

Before logging in the server, first click  and make corresponding settings,

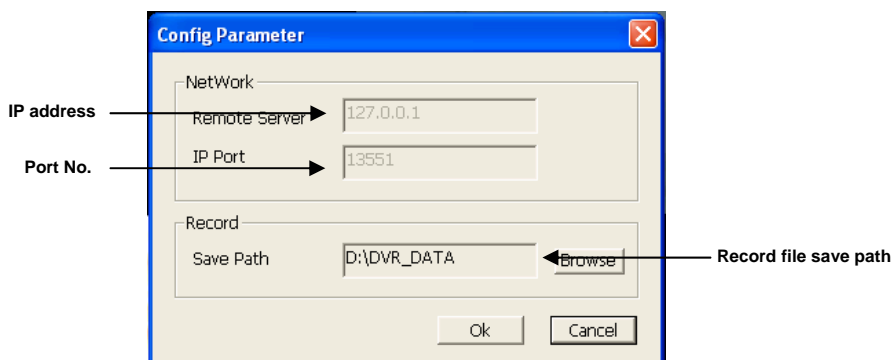



Fig7.21 Client-side configuration

7.2.1.2 Log in Remote Playing back System

Click  after making up certain configurations, and the following window appears.

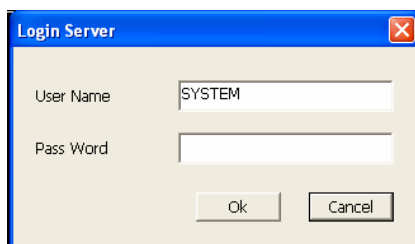


Fig7.22 Login remote playing back system

Input the right user name and password and enter the remote playing back main interface as below:

Note:

The default User name is SYSTEM with no password. Users can set user name and password at the server end (refer to Fig4.23).



Fig7.23 Remote playing back main interface

7.2.1.3 Control playing back

Select the time period for playing back

Once login the system, the setup button and login button are disabled.



Click and the following window appear.

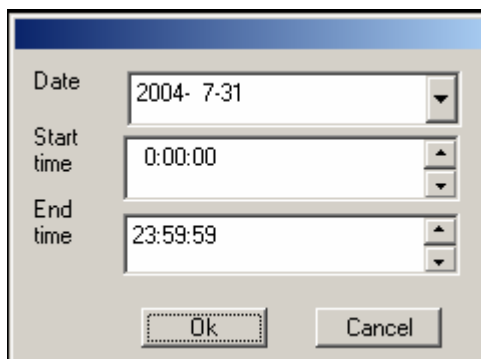
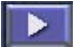
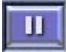


Fig7.24 Select date/time period for playing back

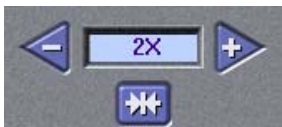
Select the date / time, then click 'OK' to save the setting and return to the main interface. Click 'Cancel' to give up setting. The selected time / date will appear at the left bottom of the screen.

Play Control



Click  and begin to play the recorded files. Press  to pause. Users can draw the lever as below to select time to play.

**Fig7.25 Time control Lever**

The following area is for users to control the play speed.

**Fig7.26 Play speed control module**

Remote Record

Click  and begin to record remotely. And the icon changes to . Click it again and stop recording. Users can select save path and compression format before logging in the system.

7.3 Mobile Surveillance

Introduction to Mobile Surveillance

In SuperDVR system, the mobile surveillance can be realized by connecting the mobile phone to the system. For time being, the function is supported by Windows Mobile system and Symbian Series 60 Developer Platform 2.0 intelligent mobile phone system. So far, the types of phones on which the function has been tested include mini 02, Xda II, Xda Atom, pocket PC phone edition, **dopod 696**, dopod 900, **dopod 838**, which are based on Windows Mobile system, and **Nokia 6260**, Nokia N70, Nokia 3230, Nokia6680 based on Symbian Series 60 system.

Client Configuration of Windows Mobile

Server configuration on SuperDVR needs to be set before the function on phone is activated. Please refer to Section 7.1 “Remote Live Surveillance”.

Firstly activate the network access on mobile phone and then run “Internet Explorer” after the server configuration has been done. Input the server’s address and the connection is built up shown as below:

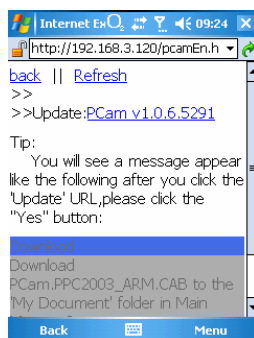


Figure7.27 connected to the server

Click “PCam v1.0.6.5291”. A dialog box pops up:

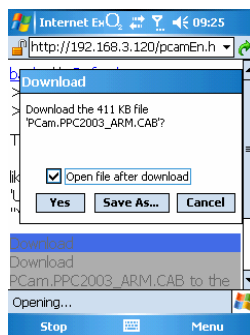


Figure 7.28 downloading dialog box

Please click “Yea” to start installing:

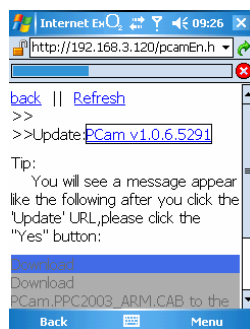


Figure 7.29 downloading status information

PCam will be opened after the download is finished:

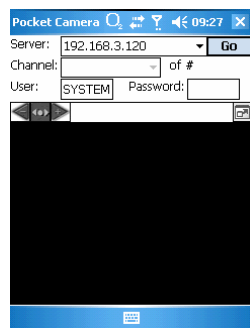


Figure 7.30 Main layout of PCam

Input the server's address, username and password respectively in the columns of

“Server”, “User” and “Password” and click “Go” to log on the server. Successful log on information appears if the server address, username and password are all correct.

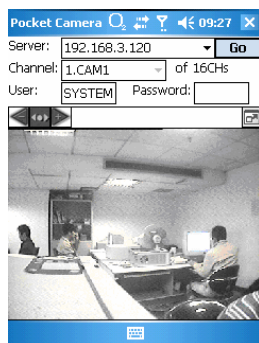


Figure7.31 Log on system successfully

Channel one is the default displaying channel after log on successfully. Changing channel can be approached by selecting the channel in rolling-down menu of “Channel”:

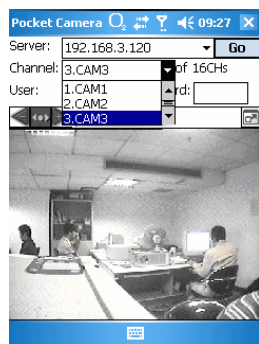


Figure7.32 selecting channel

Click “Stop” to disconnect the communication with the server.

Client Configuration of Symbian 60

Server configuration on SuperDVR needs to be set before the function on phone is activated. Please refer to Section 7.1 “Remote Live Surveillance”.

Firstly enable the network access on mobile phone and then run Web browser after the server configuration has been done. Input the server's address and then the connection is built up shown as below:

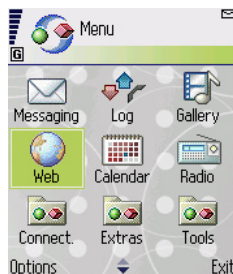


Figure7.33 Open Web Browser

Input the server address in a new-built bookmark. Click this bookmark to connect to the server.

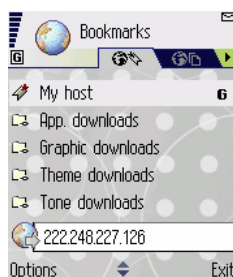


Figure7.34 Build a bookmark

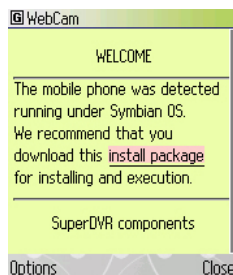


Figure7.35 Connect to the server

Click “install package” to start downloading and a confirmation information

window pops up after downloading is finished.

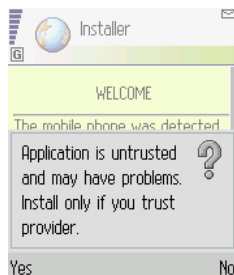


Figure7.36 Confirmation Information window
System reminds of whether to install the “SCam” if clicking “Yes”:

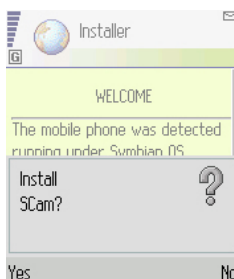


Figure7.37 Installing information

Click “Yes” to start installing. A Scam shortcut icon appears on the desktop after the installation has been done.

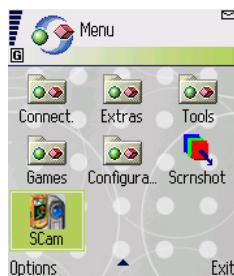


Figure7.38 Scam shortcut icon in system menu
Run “Scam” by clicking the icon:

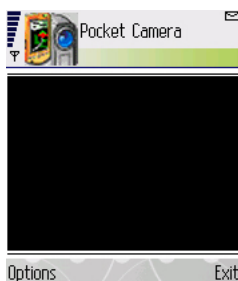


Figure7.39 Main layout of Scam

Enter the main menu by clicking “Options”,



Figure7.40 Main menu of Scam

Click “Setting” to set the log-in information,



Figure7.41 Configure log-in information

Click “Login” to build up the communication with server,

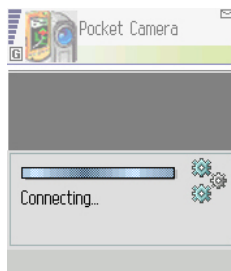


Figure7.42 Connecting to the server



Figure7.43 Log on successfully

Appendix

Appendix 1: Differences Among TD Series Card

Card Item	TD3004	TD3008	TD3016	TD3116	TD3216	TD3316	TD3101	TD3104	TD4104
Video Input	4	8	16	16	16	16	1	4	4
Audio In	PC Audio	PC Audio	PC Audio	PC Audio	PC Audio	16	1	2	4
Alarm Output	1	0	16	16	0	0	0	0	0
Alarm In	4	0	16	16	0	0	0	0	0
Relay Output	1	0	1	1	1	0	N	N	N
Watch Dog	N	Y	Y	Y	Y	N	N	N	N
Call Monitor	N	N	Y	N	Y	Y	N	N	N
Manual Gain	Y	Y	Y	N	N	Y	N	N	N

Notice: by adding Alarm Card, TD3316、TD4104 support 16 channels Alarm in、4 channels Alarm output and 1 channel Relay Output.

Appendix 2: Frequently Asked Questions

Appendix 2.1 About Installation

Appendix 2.1.1 Cannot Install the SuperDVR Driver

Possible causes:

- (1) TD series capture card hasn't been installed. Before installing driver, users should install capture card hardware in the PCI slot in the computer case.
- (2) TD series capture card hasn't been installed correctly. Please unplug the card and install it again or change to another PCI slot.
- (3) Not compatible with PC hardware.

Appendix 2.1.2 Why cannot run SuperDVR at the windows 2003 operate system?

Enabled Hardware Acceleration and DirectX Acceleration:

Hardware Acceleration: click properties of display's table setting advanced "Trouble shooting", pull the hardware acceleration spooler of the page to full, click "ok" and Exit.

DirectX Acceleration: click "start" → "Run", input "dxdiag" and click "enter", Come into the "DirectX Tools", select "Display", click and enabled the three buttons "DirectDraw", "Direct3D" and "AGP Texture".

Appendix 2.1.3 'Unspecified error' in the End of Installation

Possible causes as below:

- (1) On English version Window XP system, by using driver below SuperDVR3.0.2, the unspecified error will appear, as the databases

are not well compatible.

- (2) Microsoft Windows system database has been destroyed. Reinstall windows system or try to install SuperDVR driver above SuperDVR3.1.1 to solve the problem.
- (3) Relative Windows support files has been lost or been destroyed, need to reinstall window system, or try to install SuperDVR driver above SuperDVR3.1.1 to solve the problem.

Appendix 2.1.4 Can't find TD series Devices in Device Manager

Enter the Device Manager and cannot find corresponding TD series Devices, the possible cause may be as below:

- (1) Windows system error. Restart computer.
- (2) TD series card error. Change for a valid one.
- (3) Install SuperDVR

Appendix 2.2 How to Use SuperDVR

Appendix 2.2.1 Meanings of the indicator lights

Grey— Normal state

Red—Sensor alarm

Yellow— Motion detection alarm

Blue—Video loss

Bottle Green — Manual record state

Reseda — Schedule record state

Note:

Users can refer to Fig3.6 to learn more.

Appendix 2.2.2 How does the different record mode work?

Users can set more than one record modes in Record setup (refer to Fig3.5), but actually, there is only one valid record mode for recording.

The priority order of the record modes is: Sensor Alarm Record > Motion Detection Record > Manual Record > Schedule Record

Appendix 2.2.3 How to set recycling record mode on the system?

Select 'Recycle' in basic configuration, refer to Fig4.1.

Users can select multiple HDD partitions to save record files. It won't cover former files until all the partitions' available storage spaces are less than 100MB.

In case users haven't enabled recycling record mode and the partitions' storage spaces are less than 100MB, the alarm will ring and the HDD usage indicator will turn red.

Tips:

It is recommended that install SuperDVR into the partition installed with windows system (normally C:), and save record files in HDD partition D:

Appendix 2.2.4 How to set auto reboot function?

In case Microsoft Windows system continuously runs for a couple of days, the system may become unstable, therefore it's suggested to restart the computer every few of days.

In the basic configuration (refer to Fig4.1), input Windows user name and password (**Note: not SuperDVR user name and password**), and select time interval, then the Windows system will automatically restart according to the set time.

In case the Windows system closed abnormally, i.e. power supply is cut off, and when computer reboot next time, SuperDVR system will automatically restart, and keep the settings as before.

Tips:

Users do not need enable auto reboot function, but it's suggested to input the Windows user name and password in the relative area, therefore when meeting abnormal system exit, users don't need to be troubled to input Windows and SuperDVR user names and passwords.

Appendix 2.2.5 How to quickly use the schedule record function?

Press 'Shift' or 'Ctrl' key, and draw the cursor in corresponding areas to make schedules for multiple channels.

Appendix 2.2.6 What are the byte rates for different image qualities from highest to normal?

When on PAL system and the frame rate is 25 fps, bit rate for the highest image quality is about 120K Byte/s, and for the lowest image quality is about 30K Byte/s.

Appendix 2.2.7 The frame rate seems to be lower than what I set?

There is frame loss in image switch therefore the real record frame rate is about relatively lower than the theoretic value.

Appendix 2.2.8 Why I can't select more channels to backup?

Please draw the mouse in the channel selection area, or utilize Shift and Ctrl key for assistance.

Appendix 2.2.9 When should I select manual Gain Control?

In case the video signal is seriously decreasing, and the color images turn to black and white, use manual gain control may of be helpful.

Appendix 2.3 How to Use Network Function

Appendix 2.3.1 How to monitor on the client-side?

First enable 'Web cameras service' in basic configuration (refer to Fig4.1).

Input the server Internet address in IE browser on the client-side, and the necessary web cam driver will be downloaded automatically, then users need to install the driver. After access the web cam main interface, click 'login' and input user name and password to log in the system. (Refer to Chapter 7 to learn more)

Appendix 2.3.2 Why I can't download the client-side software?

The possible causes:

The client-side computer hasn't properly connected to Internet or LAN.

The server-end hasn't enabled 'web cameras service'

The default Http port is 80. It may be conflict with other Web servers, for example IIS. If true, please change another port.

Windows XP SP2 will block the OCX download. You should enable 'Internet Option → Security Settings → Download unsigned ActiveX controls'.

Appendix 2.3.3 Why can't the server be configured at the client-side?

The possible causes:

It can not be configured at the client-side, when the server is being configured at the server-end.

Only the last configuration is valid if server different configuration are deployed simultaneously.

Appendix 2.3.4 Why I can't see the images?

The possible causes:

The VGA card is too outdated.

Have not installed newer DirectDraw.

SuperDVR cannot run in Window 98 system.

Data port or command port is conflicts with other network services.

The user is connected to Internet through LAN, and the network administrator hasn't enabled corresponding data port or command port.

The client-side has installed firewall software that may stop video transmission.

MPEG4 codec has not been installed properly, please download new version WebCam.

Bad network speed.

Appendix 2.3.5 What should I do if the Internet speed is quite slow?

The more channels opened, and the slower the video transmission speed, therefore try to use one channel display mode when the network speed is slow.

Tips:

There may be some surplus channels that have no video input. Switching off the channels is of help to improve transmission speed. (Refer to Basic Configuration about switching on/off channels.)

Appendix 2.3.6 Why I can't start WebCam server or RPB server?

Possible causes:

Other software is using these ports. If so, please change WebCam ports configuration or stop other softwares.

Appendix 2.4 Other questions

Appendix 2.4.1 Why computer display doesn't work, and why I can't access window system?

The capture card may not be well installed. Unplug the card and try it again.

Note:

Please unplug the power plug of the computer, so as to avoid damaging the motherboard chip set.

Appendix 2.4.2 Why I can't find the recorded files?

HDD space is not enough.

Appendix 2.4.3 Why the screens display is unstable with dithering and water-wave images?

Possible causes:

Camera electrical power is not enough.

There is external electromagnetic disturbance, or electrostatic disturbance of camera BNC connector (It's suggested to connect ground wire to the connector).

User hasn't installed necessary VGA driver.

VGA card problem. Try reinstalling the VGA card, or changing another VGA card.

Appendix 2.4.4 Why does it delay to play back, and it's slow to close and open the driver?

Possible causes:

Windows system problem. Try to reboot the computer.

There are too many recorded files or too many fragments on the HDD,

therefore it takes time to search for the files, you need delete the files that you don't need, or need to make disk defragmenter now.

Capture card problem.

Computer hardware system is too outdated.

Appendix 2.4.5 Why I can't play back?

Windows media player has been damaged, or decoder hasn't been installed properly. It's suggested to reinstall the relative software system.

Computer problem, recorded files have been damaged. It's suggested to fix these files using SuperAVIFix program.

Appendix 2.4.6 Why do I see some gray blocks on time progress bar area when play back?

Possible causes:

User has deleted these recorded files.

SuperDVR has deleted recorded file when recycle option being is chosen.

Recorded files can't be opened because the recording is on.

Appendix 2.4.7 Why do I see some old record sections that can't be covered when play back?

Possible causes:

You have ever selected disk partitions different from the current.

These recorded files are being played back when covering it.

Database of recorded log was damaged.

You have ever installed SuperDVR on different directories..

Appendix 3 Quick Start For Using

Before installing the PCI card, check PC requirements:

1. P III 800 MHZ
2. 256 MB RAM
3. Windows 2000 (SP4 min) or Win XP (SP1 min)
4. NVIDIA Video Card with 32 MB min or similar
5. DirectX 9.0 minimum
6. 80 GB HDD

Installation Instruction:

1. Insert the PCI card. (But do not connect the Camera yet.)
2. Launch windows
3. Windows will come up with Hardware wizard. Just click CANCEL
4. Put the installation CD in and open up SuperDVR folder run the "setup file"
5. Follow the steps and in Windows XP, it will come up with a message say this program has not passed windows logo testing, just "Continued anyway"
6. Reboot computer once it is completed.

FOR COMPLETE INTRUCTIONS, REFER TO THE MANUAL.

Once Boot up, On Desktop there will be "SuperDVR" icon. opened well. If this program recognizes the PCI card, program will open just fine. Please log in first to the program.

Once your program is opened, now connect the Camera.

Done.

Troubleshooting:

Q: When opening the SuperDVR program, it says "Can't find card"

A: Reboot one more time. If still same problem, click Start – Program –

SuperDVR – Install and then Uninstall. Reboot computer. After reboot, go back to start-program-SuperDVR-install. Now click on INSTALL to reinstall driver. Then Reboot.

If for some reason still “cant find card”, uninstall driver again. Shut down computer. Move PCI Card to another slot. Reboot. And CANCEL when windows detect it.

Then reinstall driver by going to start-program-SuperDVR-install.

FOR OTHER SETTINGS IN THE PROGRAM PLEASE READ THE MANUAL.

Q: How to setup the web client to monitor from Internet?

A:

- **On Main Computer where the DVR card installed:**
- Make sure the computer connected to Internet. DSL or Cable Modem preferably.
- Find out your IP address. You can go to this link to find the IP address <http://lawrencegoetz.com/programs/ipinfo/>
- Open up the SuperDVR program and go to basic configuration. Check and ENABLE Web Camera Service and Remote Play Back Service.
- Make Note on Data Port, Command Port and RPB port.

NOTE: IF YOU ARE CONNECTING TO INTERNET USING ROUTER, YOU NEED TO configure THE SETUP OF THE ROUTER AND DO THE PORT FORWARDING. PORTS THAT NEED TO BE FORWARDED: 80, 1159, 1259 AND 13551. CHECK YOUR ROUTER MANUAL ON HOW TO SETUP THAT.

- **On Remote Client Computer:**

- Minimum Requirement for the client computer:

1. P III 800 MHZ
2. 256 MB RAM
3. Windows 2000 (SP4 min) or Win XP (SP1 min)
4. NVIDIA Video Card with 32 MB min or similar
5. DirectX 9.0 minimum
6. 80 GB HDD

- - Open up Internet Explorer.

- If you are running XP with SP2 do the following: on Internet explorer, click on TOOLS and Internet Option. Security Tab, Custom Level, and “ ENABLE DOWNLOAD UNSIGNED ACTIVEX CONTROLS”

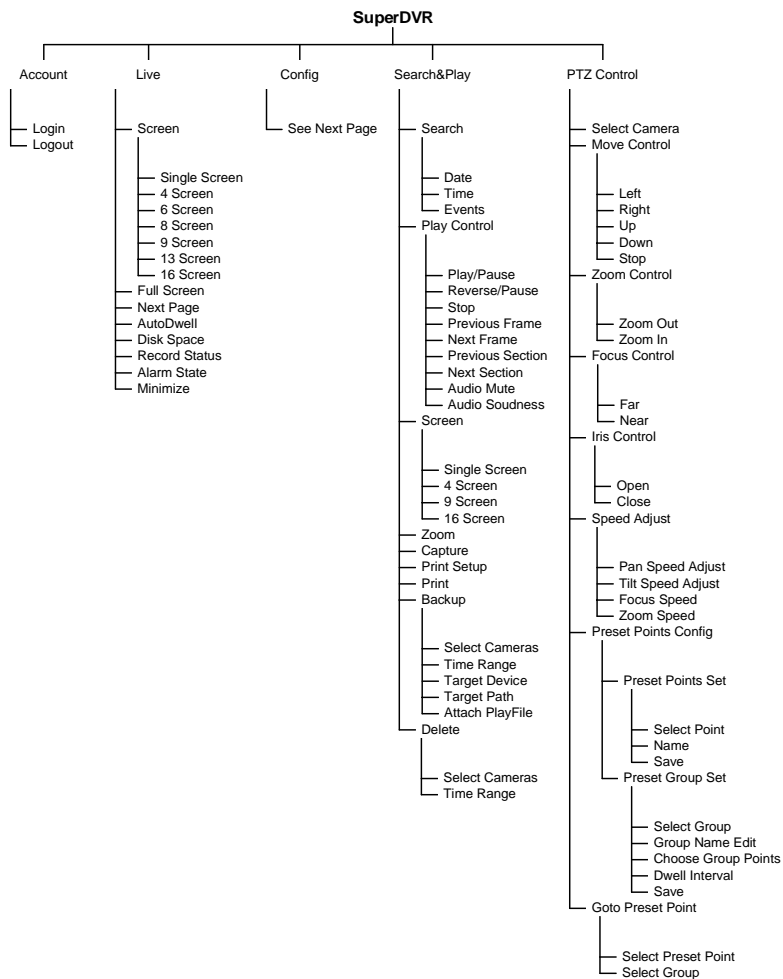
- In the column of the Internet explorer, type in the IP address of Main Computer
- Click OK on Live Surveillance. This will download the webcam program. And then you can download Remote Playing back as well.
- On Desktop now you should see WEBCAM and REMOTE PLAYING BACK icon.
- Open up webcam, click on KEY symbol icon, user name: system. Password blank unless you setup a password within the main computer. Server: this the IP address of the main computer. Data port: 1159 and Command port: 1259. Click OK. Now you should be able to view the live video from main computer.
- To Play Back the VIDEO that has been recorded in Main Computer, Open up REMOTE PLAYING BACK.
- Click on CONFIG. Remote server: the IP address of main

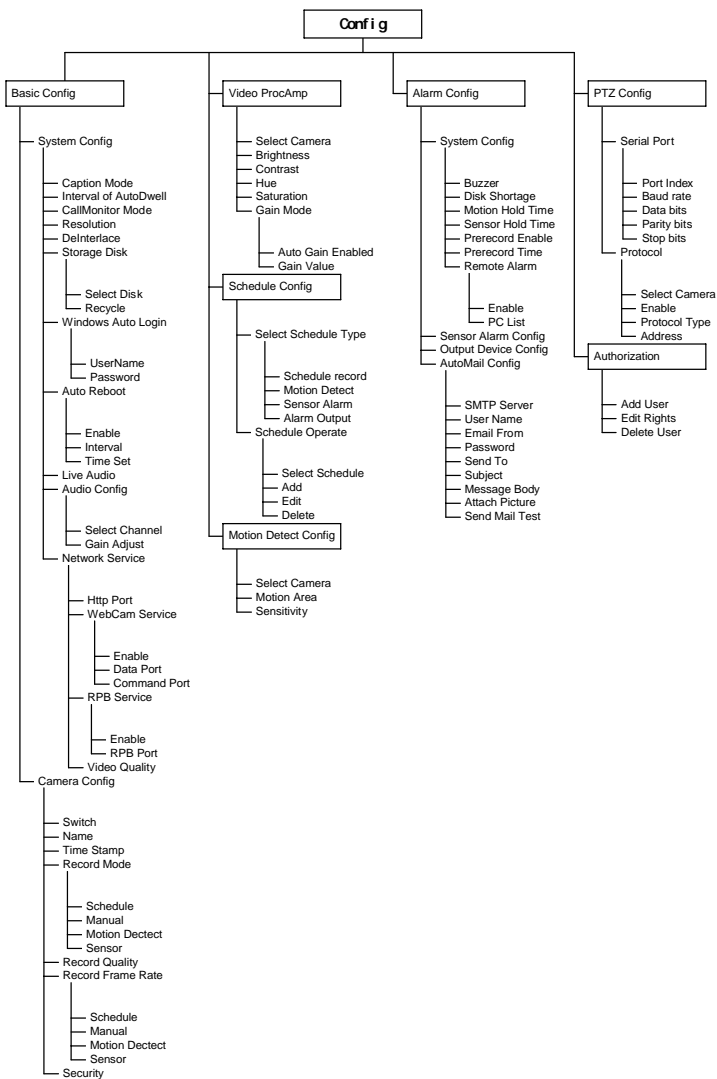
computer. IP port: 13551. OK

- Click LOGIN. OK. Now you should be able to play back the recorded video from main computer.

FOR MORE DETAILS INFO: READ THE MANUAL.

Appendix 4 Function Tree





WebCam

