

USER'S MANUAL

For BTD E 2.8

KEEP THE MANUAL NEAR THE MACHINE ALL TIME
AND MAKE SURE ALL USERS HAVE READ THIS



2.8 Ton Movable Scissor Lift

MODEL NO:

BTD E 2.8

FOLLOW THE INSTRUCTIONS CAREFULLY TO GRANT THE
MACHINE A CORRECT FUNCTION AND LONG SERVICE LIFE.

Daily Maintenance:

- 1. Insure all bolts are secured and snug with lock washer, nylon lock nuts, or cotter keys.**
- 2. Lift locking mechanism should be lubricated to operate properly.**
- 3. Check spring on locking mechanism for constant tension-**
- 4. Check cylinders and hose for loose connections and leaks.**
- 5. Check oil level in pump reservoir.**

Operating Tips:

- 1. DONOT attempt to lift more than the units' rated capacity.**
- 2. Lift should only be operated on a level foundation.**
- 3. Remove any potential obstacles that might impede roller travel.**
- 4. The machine or vehicle that is being lifted should be. balanced on the lift.**
- 5. Do not remove heavy components from a raised machine or vehicle without first installing adequate supports. The vehicle may become unbalanced and fall.**

On Site Assembly Instructions:

- 1. Mount motor and pump to power unit stand with 4 bolts supplied with the lift.**
- 2. Mount the 3/8" hydraulic hose to 3/8" JIC adapter located on the lower end of the hydraulic splitter. See Fig. #2. Fill reservoir tank with hydraulic oil (SAE 10 weight non-foaming non-detergent) and plug into 110 volt AC power source.**
- 3. The lock release cable should already be installed at the lock end of the lift.**

Attach the other end of the lock release cable to the brake handle and mount to the power unit stand handle.

Specifications:

Lowered Height	3 7/8"	Voltage	110VAC
Raised Height	48"	Motor Output	1 HP
Overall Width	39 1/2"	Pump Output	3200 psi
Overall Length	88"	Fluid Capacity	6 qt.

Lift Capacity Scale:

This is what the lift pick up with weight directly on the lifting pads at the specified distances from the floor.

- | | |
|-------------|---|
| 1, 500 lbs. | Scissor lift platform fully retracted(with no spacer on the platform attachment bolts). |
| 3, 000 lbs. | Scissor lift platform is raised 11/2"distance from the floor. (with provided spacer on platform attachment bolts) |
| 4, 000 lbs. | Scissor lift platform is raised 2 1/2" distance from the floor. (requires additional spacer) |
| 5, 000 lbs. | Scissor lift platform is raised 3 3/8"distance from the floor. (requires additional spacer) |
| 6, 000 lbs | Scissor lift platform is raised 4 3/8"distance from the floor. (requires additional spacer) |

Troubleshooting:

1. Pump motor will not operate.
 - Check electrical plug and cord.
 - Check electrical supply breaker.
2. Power unit switch does not operate properly.
 - Contact the manufacturer for a replacement or Additional troubleshooting information.

3. Lift mechanism does not move up and down smoothly.

-Move vehicle location on the lift for more equal weight distribution.

-Bleed the hydraulic system by first loosening the hose connection at the rod end of both cylinders. Then loosen the hose from fitting(NOT the fitting from the cylinder). Run the Power unit until fluid appears at the hose and fitting connection and hose connection at the rod end. When there is no more air exiting the System, tighten both hose connections.

4. Lift does not lift its rated capacity.

-Move vehicle location on the lift for more equal weight distribution.

-Check the voltage of the electrical supply with the unit run under load. Make sure the pump is getting adequate voltage.

5. Cylinders leak under rated load.

-Check for leaks at the hydraulic hose, fittings, cylinders and pump.

-Contamination may be in the check valve preventing the valve from completely closing.

1. Hold open the lowering valve by pushing the control lever on the power

unit.

2. At the same time, run the pump for 30 seconds to flush the valve.

3. Repeat 3 to 4 times.

4. If cylinders continue to leak down, pump may have a faulty

Valve. Contact the manufacturer.

6. Lift will not lower.

-Raise lift 1" to 2", squeeze release handle and try again to lower lift.



Rack localization locking, the height is adjustable, more safe by machine locking

-Check tension on the release cable.



Provides four request pad body, the height is adjustable, and may 360 degrees rotations.

C-27 PARTS LIST

ITEM	PART NUMBER	DESCRIPTION	QTY
1	C27-1	SAFETY GEAR RACK	1
2	C27-2	PIN	1
3	C27-3	ROLLER	4
4	C27-4	PIN, FLOOR ROLLER	4
5	C27-5	CYLINDER BOTTOM PIN	2
6	C27-6	PIN	2
7	C27-7	SCISSOR PIN	2
8	C27-8	SPRING	2
9	C27-9	SPRING	2
10	C27-10	PIN, TOP ROLLER	2
11	C27-11	SPRING LATCH RESET	1
12	C27-12	SAFETY LATCH	1
13	C27-13	THANKS, LATCH	1
14	C27-15	CABLE PULLEY	1
15	C27-16	TEE FITTING, HYDRAULIC	1
16	C27-17	WASHER	2
17	C27-18	SCREW	1
18	C27-19	ELBOW FITTING	4
19	C27-20	HYDRAULIC HOSE	1
20	30400.9054 B	45°FITTING	1
21	C27-200	SCISSOR FRAME, OUTSIDE	1
22	C27-300	SCISSOR FRAME, INSIDE	1
23	C27-400	CHANNEL, SAFETY	1
24	GB/T 126-94	BEARING 6005	8
25	GB5781.86	BOLT M8×16MM	4
26	GB 95-85	FLAT WASHER	17
27	GB 93.87	LOCK WASHER	13
28	GB810-88	NUT 30MM×1.5	2
29	GB858.88	LOCK WASHER 30MM	2
30	GB923.88	NUT 6MM	1
31	GB67.85	SLOTTED NUT 6MM×10	1
32	GB96.85	WASHER	1
33	GB5782.86	BOLT 16MM×80MM, GRADE 8.8	1
34	GB/T889.86	NYLON LOCK NUT 16MM	1
35	GB70.85	BOLT 8MM×16MM	2
36	GB5781-86	BOLT 8MM×20MM	5
37	GB70-85	BOLT 5MM×16MM	1

38	GB77-85	BOLT 8MM×1 6MM	4
39	C27-30	SAFETY RELEASE CABLE	1
40	YG03-91 00	CY LINDER	2
41	GB95-85	FLAT WASHER	2
42	C27-150	SWING ARMS	4
42A	C27-130	LIFTING PADS, SADDLE	4
42B	C27-140	LIFTING PADS, SCRWE	4
43	C27-21	HYDRAULIC HOSE	2
44	51053-1800	DOLLY	1
44-1		HYDRAU LIC POWER UNIT	1
44-2	51053-1811	HANDLE	2
44-3	C27-30	SAFETY RELEASE HANDLE	1
44-4	GB91-86	SP LIT PIN 3MM×30MM	2
44-5	GB5781-86	BOLT 8MM×25MM	4
44-6		CASTERS	2
44-7	GB97-1-85	FLAT WASHER 1 2MM, GRADE C	6
44-8	30400-9053YZ	FITTING	1
45	C27-100	TOP PLATFORM	1
47	GB/T 889-86	NYLON LOCK NUT 18MM	4
49	C27-58	WASHER	4
52-4	GB1152-89	OIL ZERK	3
53	GB41-86	NUT	4
60	C27-30B	CABLE ADJUST BOLT	1
61	C27-30C	NUT	1

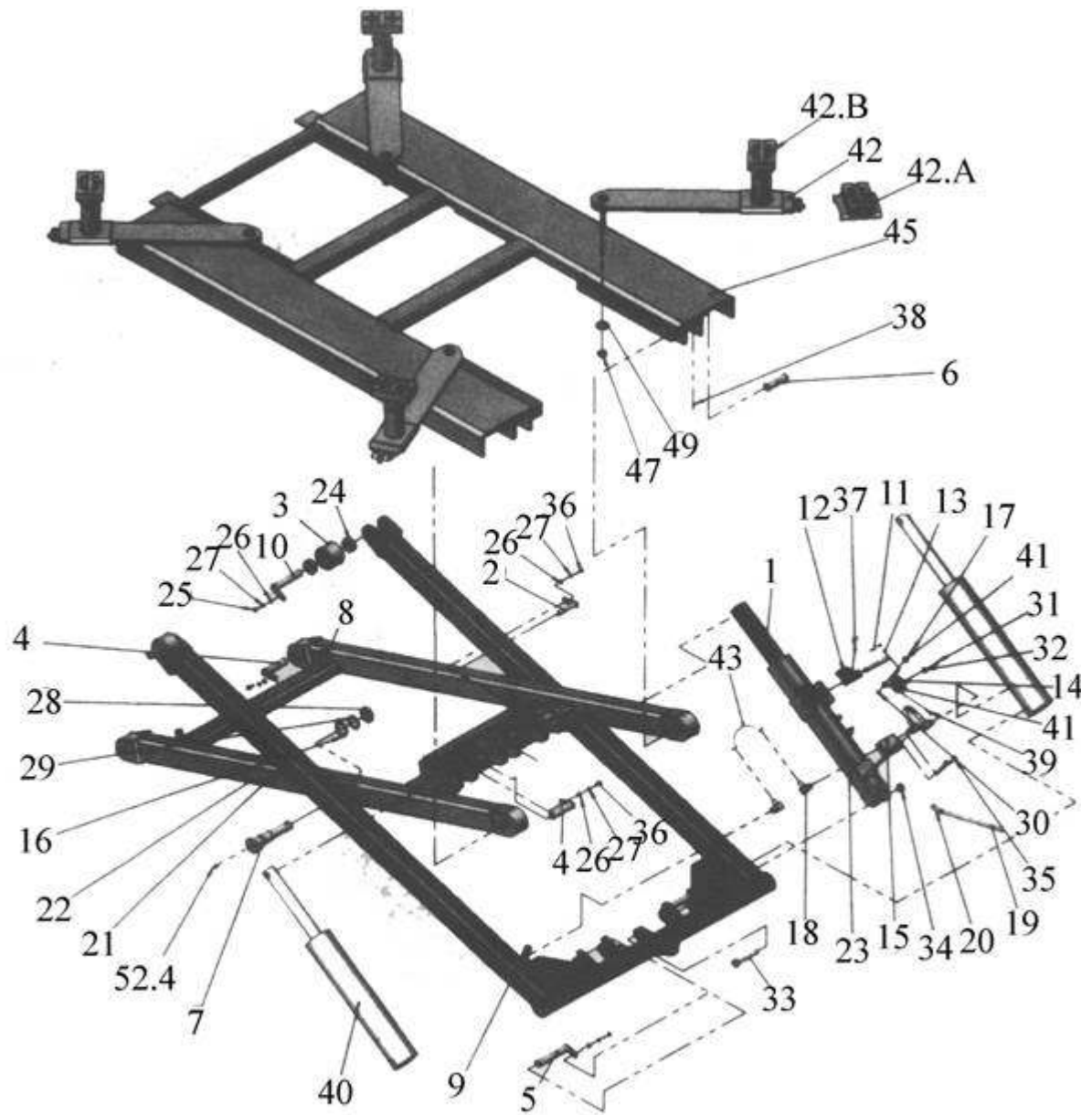


FIG.#1

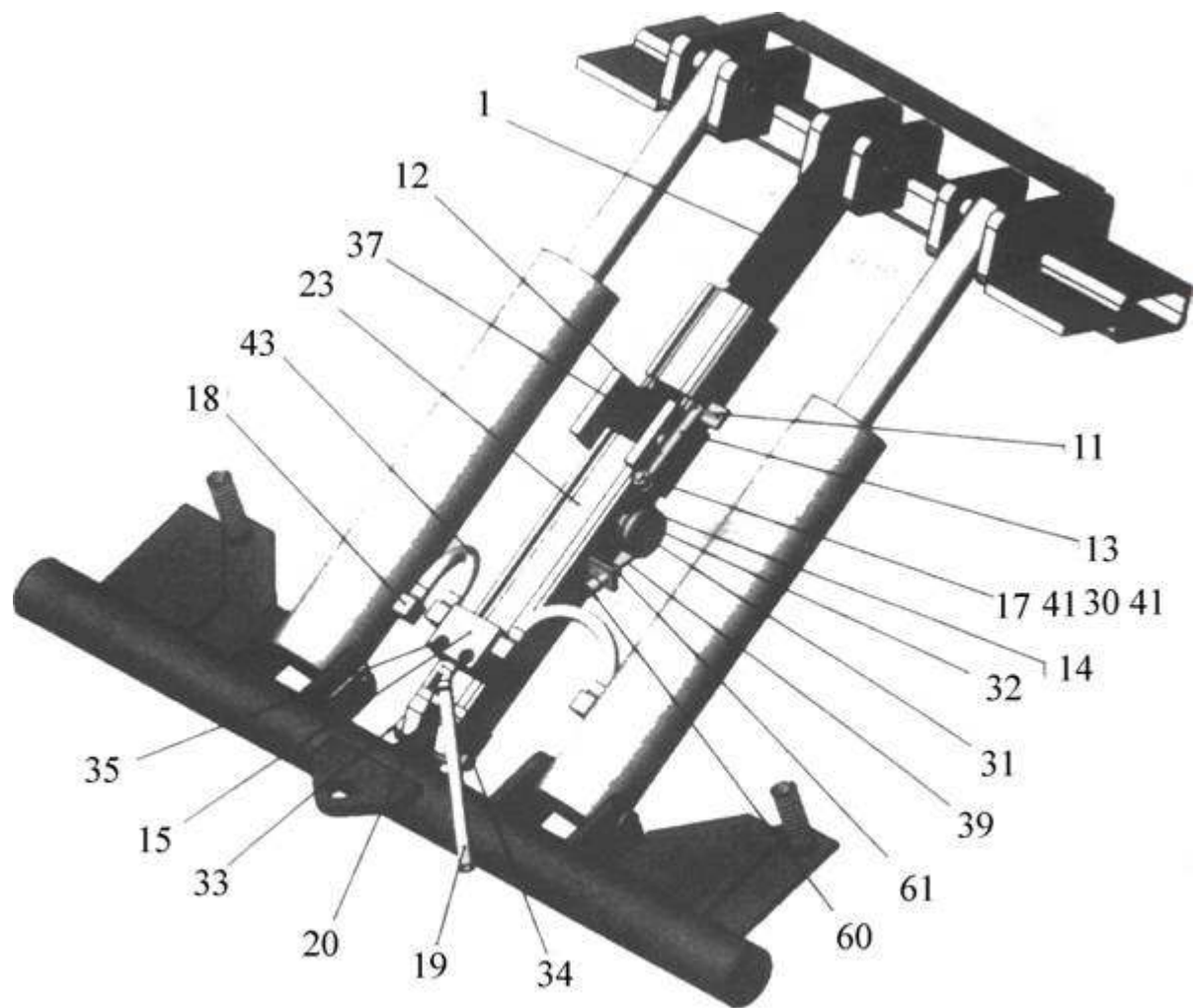


FIG.#2

Installation photo

