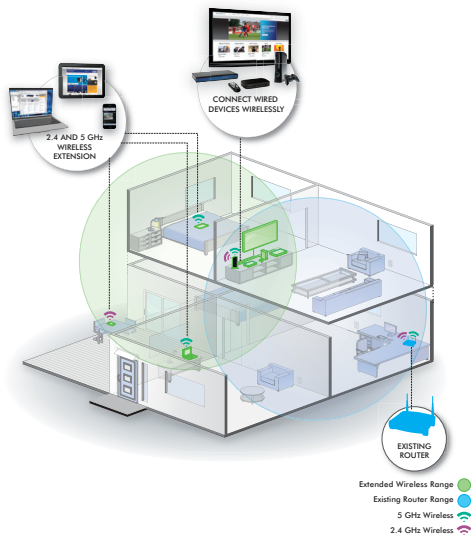


# NETGEAR®

Connect with Innovation™

## Universal Dual Band WiFi Range Extender WN2500RP Installation Guide



© 2011 NETGEAR, Inc. All rights reserved.

No part of this publication may be reproduced, transmitted, transcribed, stored in a retrieval system, or translated into any language in any form or by any means without the written permission of NETGEAR, Inc.

DO NOT stack equipment, or place equipment in tight spaces or in drawers. Be sure your equipment is surrounded by at least 2 inches of air space.

## **Technical Support**

Thank you for choosing NETGEAR. To register your product, get the latest product updates, or get support online, visit us at <http://support.netgear.com>.

Phone (US & Canada only): 1-888-NETGEAR

Phone (Other Countries):

See [http://support.netgear.com/app/answers/detail/a\\_id/984](http://support.netgear.com/app/answers/detail/a_id/984).

## **Trademarks**

NETGEAR, the NETGEAR logo, and Connect with Innovation are trademarks and/or registered trademarks of NETGEAR, Inc. and/or its subsidiaries in the United States and/or other countries. Information is subject to change without notice. Other brand and product names are trademarks or registered trademarks of their respective holders.

## **Statement of Conditions**

In the interest of improving internal design, operational function, and/or reliability, NETGEAR reserves the right to make changes to the products described in this document without notice. NETGEAR does not assume any liability that may occur due to the use or application of the product(s) or circuit layout(s) described herein.

# Hardware Features

The LEDs on the front show how the Extender is working.



**Link Rate.** Indicates a 2.4 GHz or 5 GHz wireless connection between the Extender and a router. The appropriate LED lights to indicate the type of connection:

- **Green** is best.
- **Amber** is good.
- **Red** is poor.
- Off. Not connected to router.



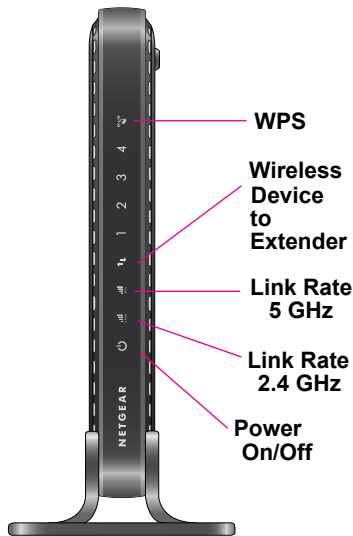
**Wireless Device to Extender.**

This LED is lit when the Extender is connected to a wireless device.



**WPS.** This LED indicates a WPS wireless connection.

- **Solid green.** There is wireless security (WPA or WPA2).
- **Blinking green.** A WPS connection is in progress.
- Off. No wireless security.



The back panel has the following features:

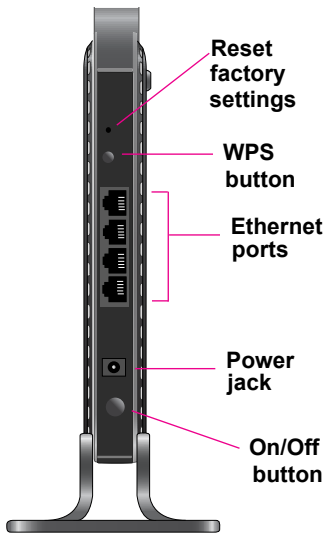
**Reset factory settings.** To reset the Extender to its original factory settings, insert a paper clip into the reset hole and hold it until the Power LED flashes.

**WPS button.** Use this button to connect the Extender to your existing Wi-Fi network. For more information, see [Connecting the Extender to an Existing Wi-Fi Network](#) on page 6.

**Ethernet ports.** Use the Ethernet ports on the Extender to connect up to four Ethernet-enabled devices wirelessly to your network.

**Power jack.** Connect the Extender to an electrical outlet by plugging the power adapter that came with your extender into the power jack and connecting the other end to an electrical outlet.

**On/Off button.** Use this button to turn the Extender on and off.

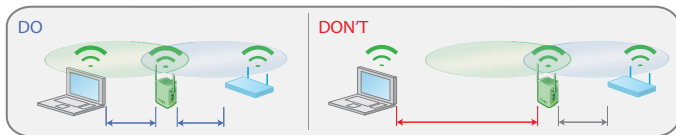


# Getting Started


The WiFi Range Extender extends the wireless network to include the area outside the range of your existing Wi-Fi network. Follow these steps to correctly set up the Extender.

## Placing the Extender and Applying Power

1. Place the Extender an equal distance between your router and the wireless device located outside the range of your router.



**Tip:** If you have to use a different location, move the Extender closer to the device, but still within the wireless range of the router.

2. Plug the Extender into an electrical outlet, and wait 1 minute until the Extender starts. The Power LED  turns green.

# Connecting the Extender to an Existing Wi-Fi Network

To extend the range of your Wi-Fi network, you need to connect the Extender to your existing Wi-Fi network. You have two options to connect the Extender to your network.

## Option 1: Connecting with WPS (Wi-Fi Protected Setup)

WPS lets you easily join a secure Wi-Fi network without typing the network name and password. The WPS button is a physical button on the Wi-Fi router, gateway, or access point.

If your router supports WPS (Wi-Fi Protected Setup), we recommend that you use Option 1; otherwise, go to Option 2.

**Tip:** WPS does not support WEP network security. If you are using WEP security, use Option 2 to connect.

## Option 2: Connecting without WPS, using the web browser setup guide

The web browser setup guide walks you through the necessary steps to connect your Extender to an existing Wi-Fi network.

## Option 1: Connecting with WPS (Wi-Fi Protected Setup)

1. Press the **WPS** button on back panel of the Extender. The WPS LED on the front should blink.
2. Within 2 minutes, press the **WPS** button on your wireless router, gateway, or access point.

If successful, the WPS LED on your Extender turns solid green, the 2.4 GHz Link Rate LED lights up, and the Extender should be connected to your existing Wi-Fi network.

**Note:** If the 2.4 GHz Link Rate LED does not light up, repeat steps 1 and 2, or make sure your router supports WPS.

3. If your router supports the 5 GHz band, repeat steps 1 and 2 to connect the Extender to the 5 GHz band. The 5 GHz Link Rate LED on your Extender should light up.


The Extender's wireless network name (SSID) changes to your existing Wi-Fi network name, with **\_2GEXT** or **\_5GEXT** at the end of the name, depending on whether the Extender is connecting to your Wi-Fi network in 2.4 GHz or 5 GHz.

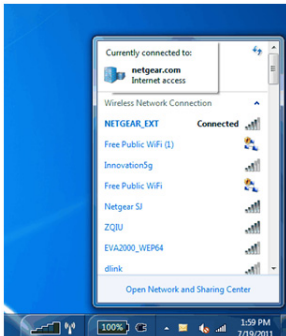
Existing Wi-Fi network name: MyNetworkName

New Extender network name: MyNetworkName\_**2GEXT**


To connect additional Wi-Fi devices to your Extender network, use the same network security key (password) as is set on your existing wireless network/wireless router.

## Option 2: Connecting with web browser setup guide

1. Once the Extender is powered on and the Power LED  is green, use a wireless network manager on a computer to find and connect to **NETGEAR\_EXT** (SSID) wireless network.

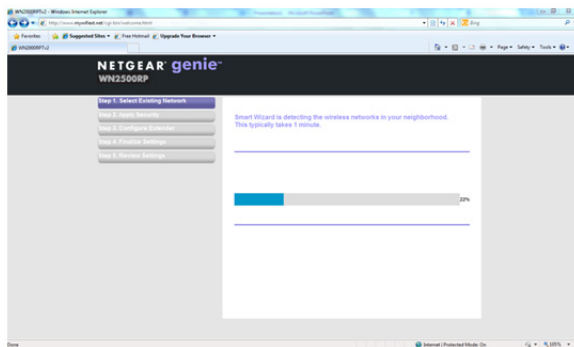


**Tip:** You can use any wireless network manager utility on a computer or tablet to find and connect to the Extender wireless network.

After the connection with the computer is established, the Wireless Device to Extender LED  turns green. Next, you need to connect the Extender to your existing Wi-Fi network.



2. Open a web browser window from the same PC, and the browser should take you directly to the onscreen setup guide.



**Tip:** You can always access the Extender settings again by typing **www.mywifiext.net** in your browser URL bar.

3. The web browser setup guide walks you through the following steps:
- Selecting the Wi-Fi network you would like to extend.
  - Entering the security password for the existing network.
  - Choosing the name for your new Extender network.
  - Connecting your wireless devices to your new Extender network.

### Extender Configuration Settings

If you want to make changes after initial setup, or you wish to run the setup again, you can always access the Extender configuration settings again by typing **www.mywifiext.net** in your device's browser address. When prompted to log in, use the following information:

User name: **admin**

Password: **password**

# Extender Performance



The Link Rate LED indicates the performance of the 2.4 GHz or 5 GHz wireless connection from the Extender to a router.

- The best performance is delivered when the Link Rate LED is green.
- A workable performance is delivered when the Link Rate LED is amber.
- A red Link Rate LED indicates a poor connection or no connection.
- If the Link Rate LED is off, there is no connection between the Extender and the router.

**Tip:** Make sure your Wireless Device to Extender LED is green before you check the Link Rate LED for performance.

## To improve Extender performance:

1. Move the Extender closer to the router or to a different location with a better line of sight.
2. As you move the Extender, check the Link Rate and the Wireless Device to Extender connection LEDs on the front panel until you find a good location.

# FastLane™ Technology

Fastlane™ Technology offers maximum Wi-Fi performance. It provides high-speed Wi-Fi with a dedicated band connecting the Extender and the wireless device, and a second band connecting the Extender and the router. It is ideal for HD gaming and HD video streaming.

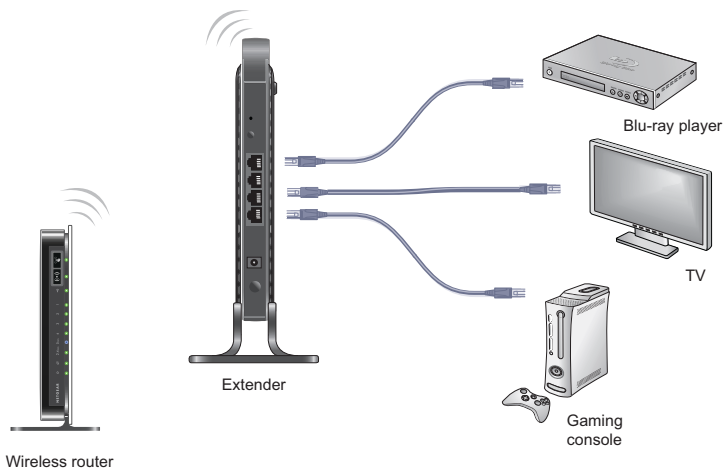
## To enable FastLane Technology:

1. After you have set up the Extender, switch to FastLane mode by logging in to **www.mywifiext.net** to access the Extender Settings page.
2. In the menu options on the left side of the Settings table, select **Advanced > Operating Mode**.
3. Select **FastLane Technology**.
4. Review the two FastLane Technology options, and select the one that suits your setup.
5. Click **Apply**.

**Tip:** To maximize performance, FastLane limits device connection to the band you select. NETGEAR recommends that you choose the band that most of your devices support.

## Four-Port Wi-Fi Adapter

Once the Extender is connected to your existing wireless Wi-Fi network, you can use the Ethernet ports on the Extender to connect up to four devices wirelessly to your network. Simply plug the Ethernet cable from your Ethernet-enabled device (connected TV, Blu-ray player, gaming console) to the Ethernet port of the Extender, and enjoy wireless connectivity for up to four devices simultaneously.



## When to Use the Extender Wireless Network

NETGEAR recommends that you connect to the Extender wireless network only when a PC or wireless device is in a “dead zone” where the network connection to your existing router is very poor or nonexistent. This is because data traffic routed through the Extender wireless network is slower than traffic directly from the original wireless router network.

If you cannot connect from your wireless device to the Extender, move the Extender to a different location halfway between the device and the router. If, after you try several locations, the device cannot connect to the Extender, move the Extender closer to the device.

## Wireless SSIDs and Passwords

Use the space below to record your new Extender network name (SSID) and Extender security settings, in case you need to add additional wireless devices to your Extender in the future.

Enter your wireless information here:

Router network name (SSID) \_\_\_\_\_

Router security password \_\_\_\_\_

Extender network name (SSID) \_\_\_\_\_

Extender security password \_\_\_\_\_



# Frequently Asked Questions

You can find more information about your product in the *User Manual* available at <http://support.netgear.com>.

- 1. NETGEAR Genie keeps asking me for my wireless password, and I am sure I have entered the correct wireless password. What can I do?**

It is very likely that the Extender is placed at the borderline of the range covered by the router. Follow the instructions in the previous section to resolve this. If you are using WEP security, make sure that you are typing the wireless key in the correct field.

- 2. I connected to NETGEAR\_EXT and launched a browser. Why am I unable to see NETGEAR Genie?**

First, make sure your computer is set up to use DHCP (most are). Second, make sure the PC to Extender status LED is green and you have a valid IP address. Finally, re-launch the browser, and enter **www.mywifiext.net**.

- 3. Will the Extender work if I connect it to the router with an Ethernet cable?**

No. The Extender is designed to connect wirelessly to the router.

- 4. What are the user name and password to log in to the Extender?**

The user name is **admin**, and the default password is **password**. Both are case-sensitive.



## Compliance

### Declarations of Conformity

For complete DoC please visit the NETGEAR EU Declarations of Conformity website at: [http://kb.netgear.com/app/answers/detail/a\\_id/11621/](http://kb.netgear.com/app/answers/detail/a_id/11621/)

For GNU General Public License (GPL) related information, please visit [http://kbserver.netgear.com/kb\\_web\\_files/open\\_src.asp](http://kbserver.netgear.com/kb_web_files/open_src.asp)



This symbol is placed in accordance with the European Union Directive 2002/96 on the Waste Electrical and Electronic Equipment (the WEEE Directive). If disposed of within the European Union, this product should be treated and recycled in accordance with the laws of your jurisdiction implementing the WEEE Directive.

**NETGEAR, Inc.**  
350 East Plumeria Drive  
San Jose, CA 95134 USA



201-14223-03

**November 2011**