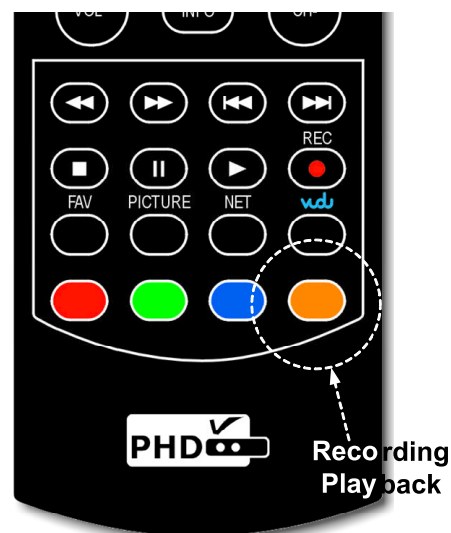


In addition to playback different types of video files from PHD-VRX Media Player Video section, PHD-VRX is now available to directly playback the entire recorded TV programs under “Recordings” section. Users can easily access this section, manage it and playback their favorite recorded shows.

There are three ways to access this section:

- ❑ Press **MENU** remote key to bring up on-screen menu. Navigate to Media Player, then use **◀/▶** or **▲/▼** keys to select “Recordings” option. Press **OK** key to enter Recordings main menu.
- ❑ Press **ORANGE** key as the “Recording Playback” hot key to access “Recordings” section immediately in the normal operations.
- ❑ Or, after unit power up, if system detects the external USB HDD and asking to open the Media Player, then once confirmed, user will be able to access Recordings section from the first option.

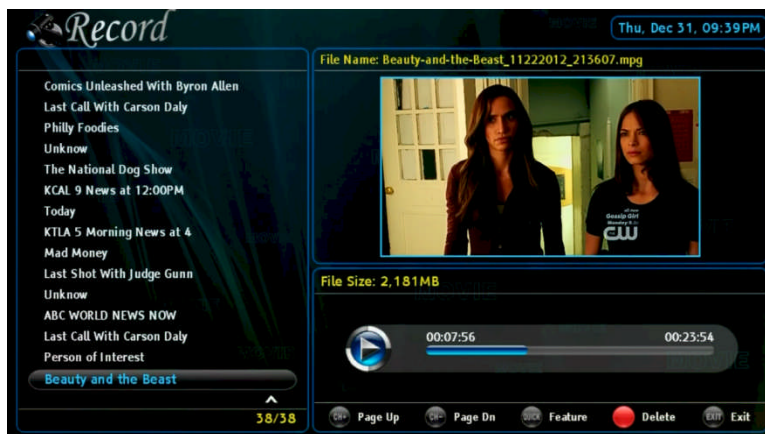


Recordings

The PHD-VRX is capable to play many different types of video files from the external USB hard drive. However, in most cases, the user will only wish to playback their recorded TV programs instantly in a convenient way. Therefore, under this “Recordings” section, PHD-VRX will only display all the recorded TV programs. The user will be able to manage it by sorting these files in a different fashion, controlling forward and backward skip time, playback from the last viewing point, turning on/off closed caption, displaying TV program detail information and etc.

Recordings main menu contains:

- **File List Screen** appears on the left side. It lists all the recorded TV program names. Use **▲/▼** or **CH+** (page up) or **CH-** (page down) to quickly search or highlight the



specific TV program. You can also use the  remote key to delete some files to save space.



- All these program names listed on the left side can be sorted out based on time, title or channel number per your choice.
- **Preview Screen** appears on the upper right portion. It shows the current highlighted program video in a smaller preview window. On top of this preview window, it displays this TV program full file name.
- **Video Time Line Screen** appears on the lower right portion. This screen gives you the duration of the TV program selected, program video file size, and the status for the action keys.



- From the preview window, the user will be able to play, stop, pause, skip and fast forward/rewind video by using these action control keys without moving to full size video screen.

In addition to the above screen features, PHD-VRX provides additional two useful menus:

○ **Quick Menu**

In Recordings main menu, press **QUICK** remote key to bring up Quick menu on the left corner. This menu has several features:

- **Sort:** There are 6 different sorting methods to allow user to arrange the recorded program names in their choice.

1. **Time DESC:**

Program names are sorted in descending order based on the file creating time.

2. **Time ASC:**

Program names are sorted in ascending order based on the file creating time.

3. **Title DESC:**

Program names are sorted in descending order based on the TV program title.

4. **Title ASC:**

Program names are sorted in ascending order based on the TV program title.





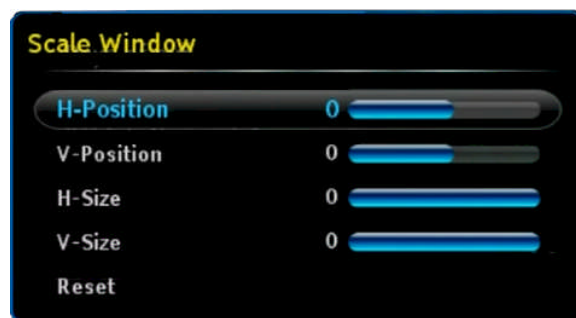
5. **CH Num DESC:**

Program names are sorted in descending order based on the associated channel number.

6. **CH Num ASC:**

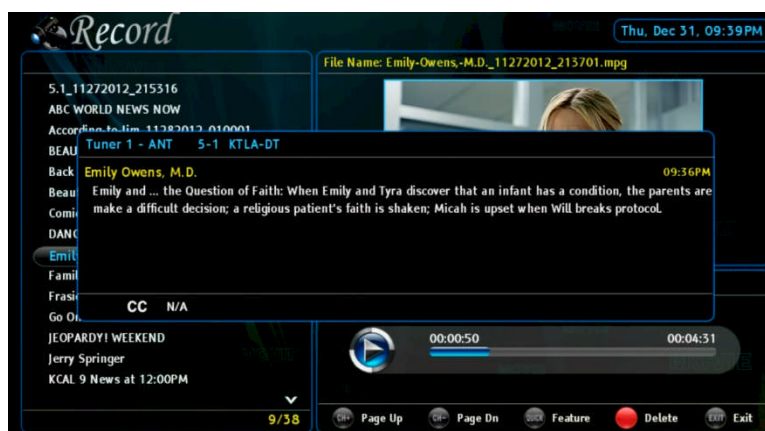
Program names are sorted in ascending order based on the associated channel number.

- **Forward Skip Time:** Each forward skip  jump duration can be selected from 20 sec, 30 sec, 60 sec, or 120 sec.
- **Backward Skip Time:** Each backward skip  jump duration can be also selected from 20 sec, 30 sec, 60 sec, or 120 sec.
- **Scale Window:** Use this option to fine tune video size in order to fit your TV screen nicely. Press OK key to bring up "Scale Window" menu for the adjustments. Please also refer to the details of scale window adjustments in PHD-VRX User Manual.
- **USB Disk Status:** Use this option to check the external USB storage device status.



○ **Program Information Screen**

In Recordings main menu, press **INFO** key, PHD-VRX will bring up the "Program Information" pop-out screen. This will display available detail program descriptions regarding the highlighted show in the File List screen.



In Recordings main menu, press **OK** key on the highlighted TV program. The full size video will be displayed.

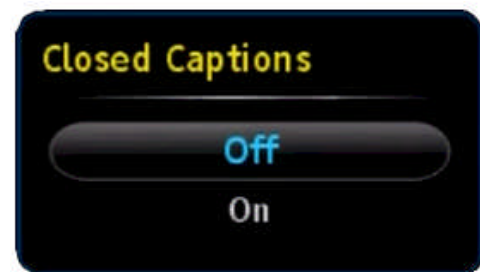
During the full size video screen playback, many useful functions like closed caption, video aspect adjustments and playback action controls can be operated directly from PHD-VRX remote keys .



○ Closed Caption

Only in the full size video playback, you can turn on and off closed caption based on the following actions:

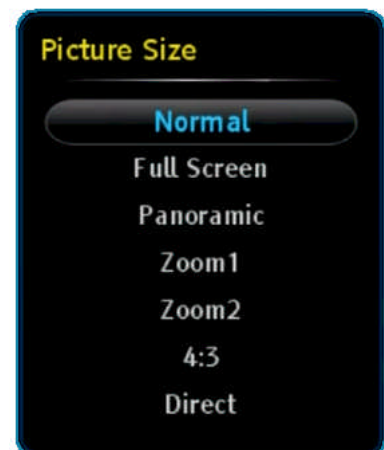
- **CC key:** Press **CC** key during playback, top corner “Closed Caption” screen will pop out. Select On, the closed caption will be displayed if it is available in the program. Select Off to turn off the closed caption.
- **MUTE key:** Press MUTE key anytime during full size video playback, the closed caption will be automatically turned on if it is available in the program.



○ Aspect Control

In the full size video playback, video aspect ratio can be adjusted by using the remote **ASPECT** key. After the key is pressed, the “Picture Size” menu will pop-out. There are 7 adjustments as Normal, Full Screen, Panoramic, Zoom1, Zoom2, 4:3, and Direct modes in this menu.

Please refer to the Auto Aspect section in PHD-VRX User Manual for more detail operations.



- If recorded show is SD (Standard Definition) with 4:3 ratio, during playback, you will need to set “4:3” mode in aspect adjustments in order to set back to the correct SD screen, otherwise, the video size will be stretched out.

○ **Quick Menu**

In the full size video playback, press **QUICK** remote key to bring up Quick menu on the left corner. There are several features including PICTURE controls, SOUND controls, set current video playback is repeatable or not. And the remaining features, Forward Skip Time, Backward Skip Time, Scale Window and USB Disk Status are the same items shown in the Quick Menu of the Recordings main menu.



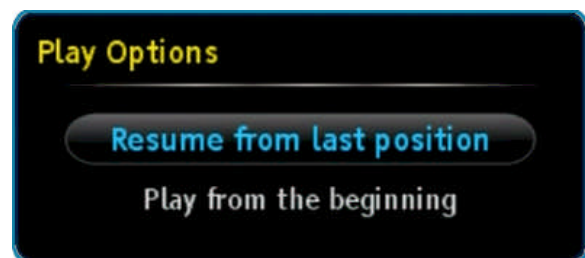
○ **INFO key**

During the full size video playback, you can press **INFO** key anytime to bring up current program information including the program file name, file size and time line progress bar. Press **INFO** key again, the information screen will be disappeared.



○ **Resume Playback Feature**

In the full size video playback, you can stop in any point and back to the Recordings main menu. When you want to re-play this show, press PLAY key, then "Play Options" menu will pop-out. You can either select resume from the last viewing position or start playing from the beginning. PHD-VRX will memorize the previous playing location and resume from that point if the option is selected.



On the full size video screen, you can always use the remote control action keys to adjust the speed or stop the video at any time. These action control keys are:

- ▶ **PLAY:** Play or resume a paused video.
- ⏸ **PAUSE:** Pause current video.



How to use PHD-VRX TV Program Playback Features

- **STOP**: Stop playback.
- ⏮ **FORWARD SKIP**: Use for commercial skipping or quick video jumping. Press this key once to generate a forward skip based on the re-set skipping time. Press and hold this key to create steady skipping time increments of continuous video forwarding.
- ⏭ **BACKWARD SKIP**: Use for commercial skipping or quick video jumping. Press this key once to generate a backward skip based on the re-set skipping time. Press and hold this key to create continuous skipping time decrements of video rewinding.
- ⏮ **RWD**: Rewind video quickly. Press this key multiple times to create 2x, 4x, 8x, 16x, 32x, 64x, 128, and 256x different rewind speeds.
- ⏭ **FF**: Fast Forward video quickly. Press this key multiple times to create 2x, 4x, 8x, 16x, 32x, 64x, 128, and 256x different fast forward speeds.



- When playback those recorded shows, the PHD-VRX unit front panel LED display will show “PLAY” to indicate that the unit is in playback mode.
- Continuously pressing and holding the ⏮ or ⏭ keys will create smooth, quick forward or backward video search or commercial skipping.
- All the file names listed in Recordings section are created once started with the new firmware. The previous recorded files and other video files won't be listed and shown in this section. However, you still be able to playback any video files from the Video section under Media Player function.



Note: Please always use  key as the ‘BACK’ or “RETURN” key when needed.



How to use PHD-VRX TV Program Playback Features
