



M6★PRO

UNIVERSAL-FIT NOISE-ISOLATING MUSICIAN'S IN-EAR MONITORS

model: M6PRO-CL

USER MANUAL

Please read this manual in its entirety to ensure best fit and sound.

PACKAGE CONTENTS

M6★PRO NOISE-ISOLATING MUSICIAN'S IN-EAR MONITORS



M6 PRO
In-Ear
Monitors



1/4" (6.3mm)
adapter



Protective
carrying
case



Comply™
T200 Memory
Foam eartips



Spare
cable



Shirt
clips (2)



Silicone
eartips
(6 pairs)



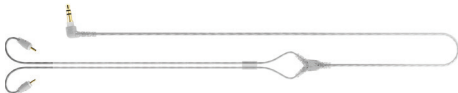
User
manual

FIRST USE: ATTACHING THE EARPIECES

The M6 PRO includes two detachable, interchangeable cables

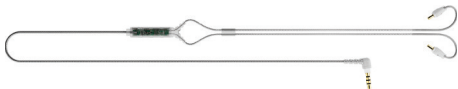
1. STEREO AUDIO CABLE

Engineered for maximum performance, the stereo cable features a reinforced plug and internal braiding for strength and tangle-resistance. A gold-plated $\frac{1}{4}$ " (6.3mm) stereo adapter is included to ensure compatibility with a wide range of gear.

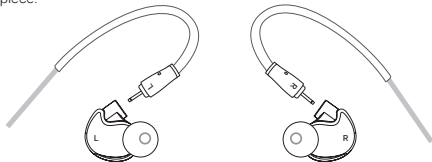


2. HEADSET CABLE

The headset cable incorporates a microphone, remote button, and universal volume control for compatible phones and tablets (see MICROPHONE & REMOTE USE section on p. 13 for more info)

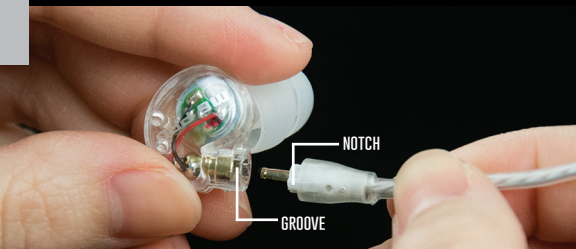


Before using the earphones, select your desired cable and attach the earpieces as shown on page 3. Make sure to attach the cable connector marked "R" to the right earpiece and the connector marked "L" to the left earpiece.

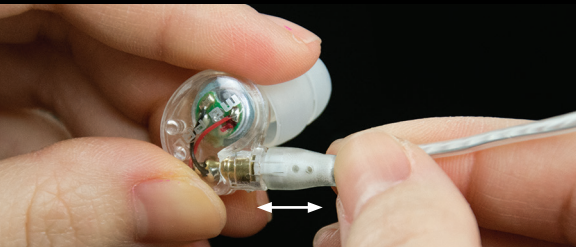


continue to next page

FIRST USE: ATTACHING THE EARPIECES (Continued)

**1.1**

Attach the cable by lining up the notches on the connector with the matching grooves on the earpieces as shown. Push connectors in until they fit securely.

**1.2**

To detach the cable, grasp the earpiece and cable connector firmly, and pull straight apart without twisting.

CONFIGURING FOR YOUR EARS: EARTIPS

Multiple sets of eartips are included to ensure you get the best fit with your headphones. We recommend trying all of the included eartips. If you experience tinny sound or a lack of bass, try different eartips.

The correct eartip for your ear will:

- Allow the earphone to fit flush in the ear
- Seal with your ear canal and reduce outside noise when inserted
- Provide good bass response



Install eartips as shown. Make sure eartips are installed securely before use.

CONFIGURING FOR YOUR EARS: Comply™ MEMORY FOAM EARTIPS

Inserting the **COMPLY** Premium Earphone Tip



Install Comply eartips as shown on page 4.

1. Roll the tip into a thin, round cylinder.



2. Pull back and up on the ear to open the canal. Gently insert the entire tip into the ear.



3. Hold the tip in place until it expands.

Changing the **COMPLY** Premium Earphone Tip



Remove old tip and discard it. Clean earphone nozzle of any debris. Securely apply the new Comply™ Premium Earphone Tip onto clean, dry nozzle. Recommended replacement is after 3 months of regular use.

For replacement tips, go to **complyfoam.com**

The Comply™ eartip size included with the M6 PRO is the **T200**.

CONFIGURING FOR YOUR EARS: MEMORY WIRE

EN

M6 PRO earphones feature an over-the-ear fit with a flexible "memory wire" section located near the earpieces. Using the memory wire correctly will ensure the most comfortable and secure fit.

1.1

Identify the right and left earpieces. They are not interchangeable.



1.2

Straighten the memory wire and put each earpiece in the corresponding ear.

continue to next page

CONFIGURING FOR YOUR EARS: **MEMORY WIRE** (Continued)

**2.1**

Adjust earpiece until it fits flush in your ear and the eartip seals in the ear canal.

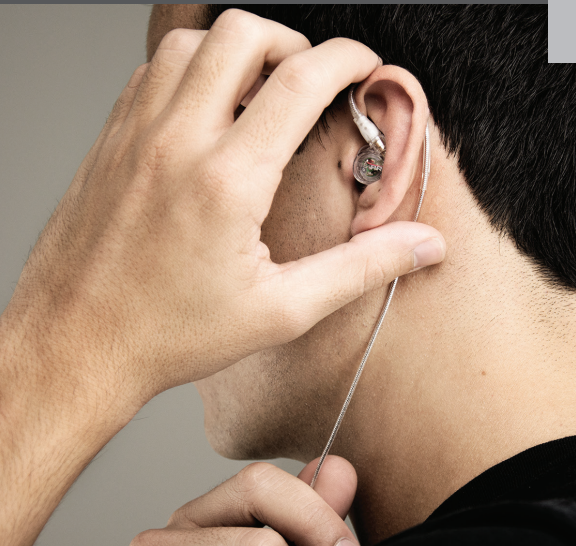
**2.2**

Holding the earpiece in place, bend the memory wire around your ear to achieve a conforming fit.

continue to next page

CONFIGURING FOR YOUR EARS: **MEMORY WIRE** (Continued)

EN



3

While pulling the cable gently with one hand, squeeze the memory wire behind your ear with the other hand until the fit is tight and secure

continue to next page

CONFIGURING FOR YOUR EARS: MEMORY WIRE (Continued)



CABLE CINCH

SLIDE THE
CABLE CINCH UP

4.1

Tighten the sliding cable cinch to fix the earphones in place for the most secure fit



SHIRT CLIP
HOLDS CABLE
IN PLACE

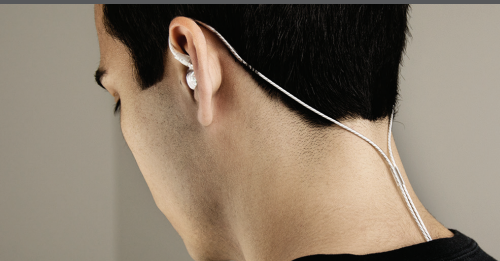
4.2

Use the shirt clip to control cable movement

continue to next page

CONFIGURING FOR YOUR EARS: **MEMORY WIRE** (Continued)

EN



5.1

Stereo cable can be worn behind back for greater freedom of movement



5.2

When worn correctly, the earphone sits flush in the ear and the cable is secure behind the ear

CONFIGURING FOR YOUR EARS: SUBSEQUENT USE

After first use, the memory wire will retain its approximate shape for easier future installation.

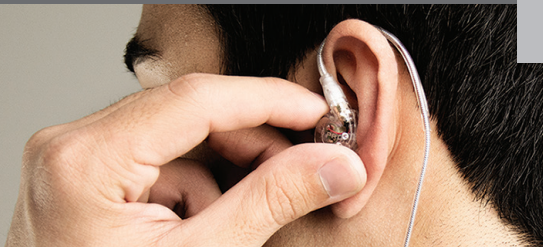
**1**

To put the earphones on, pull the earpieces over from behind the ear, placing the memory wire over the ear.

continue to next page

CONFIGURING FOR YOUR EARS: SUBSEQUENT USE (Continued)

EN



2.1

Insert the earpieces into your ears and adjust until a seal is achieved.



2.2

Squeeze the memory wire behind your ear until the fit is tight and secure. Use the cable cinch and shirt clip to control cable movement.

Note: When removing and re-inserting the earphones, avoid getting sweat in the nozzle as this may lead to a temporary reduction/loss of sound.

MICROPHONE & REMOTE USE

The headset cable includes an inline remote, microphone, and volume control.

Basic Remote Operation

for iPhone®, iPad®, iPod® and Android™ phones:

Function	Operation
Answer incoming phone call	Press the remote button
End phone call	Press the remote button
Play media*	Press the remote button
Pause media	Press the remote button
Skip to next track**	Double-press the remote button
Restart the track/previous track**	Triple-press the remote button

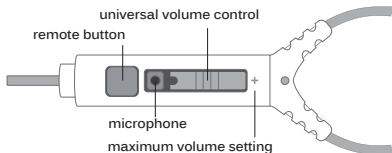
*You may need to open the media player application for initial playback to start.

**Not all media players support this functionality.

Additional remote functions are available with Apple® and some Android devices. Visit meelec.com/phone for complete compatibility and functionality.

VOLUME CONTROL

For maximum volume, move the slider to the + position.



CARE AND CLEANING

- Do not remove from ears or unplug by pulling on the cable. Always grasp the plastic part of the plug or earpieces
- If necessary, clean the earphones with a small amount of hydrogen peroxide on a cotton swab. Swab only the outside of the earphone. Eartips can be removed and rinsed under running water or in hydrogen peroxide. Allow earphones and eartips to dry completely before resuming use.

WARNING

Using headphones at high to moderate volumes for extended periods of time will result in permanent hearing damage. It is advised you keep volume levels moderate to low at all times for your safety. Do not use while driving a car, cycling, operating machinery, or performing other activities that require hearing surrounding sounds.

It is advised to turn the volume on your device all the way down before connecting your headphones, then gradually increase the volume until you reach a comfortable listening level.

TROUBLESHOOTING

Visit www.meelec.com/troubleshooting for solutions to common issues.

WARRANTY

MEElectronics earphones purchased from authorized retailers are covered by a 1-year manufacturer warranty.

For more information, visit www.meelec.com/warranty

LIFETIME REPLACEMENT

Things don't always go according to plan the real world. Whether your headphones get crushed, shredded, fried, misplaced, or carried off by army ants, we've got you covered. Just tell us what happened and we'll give you a new pair at half price, no questions asked (note: we reserve the right to ask for more of a great story).

Visit www.meelec.com/LR for more information or to request a replacement.



M6*PRO



MEElectronics and its logo are registered trademarks of S2E, Inc. All rights reserved.

iPhone®, iPad®, iPod®

are a registered trademark of Apple Inc.

Android™ is a registered trademark of Google Inc.

© 2014 Hearing Components. Comply is a trademark of Hearing Components.

MGC MEELECTRONICS®

