

IDEA FAZER 1000

S MOKE M A K I N E

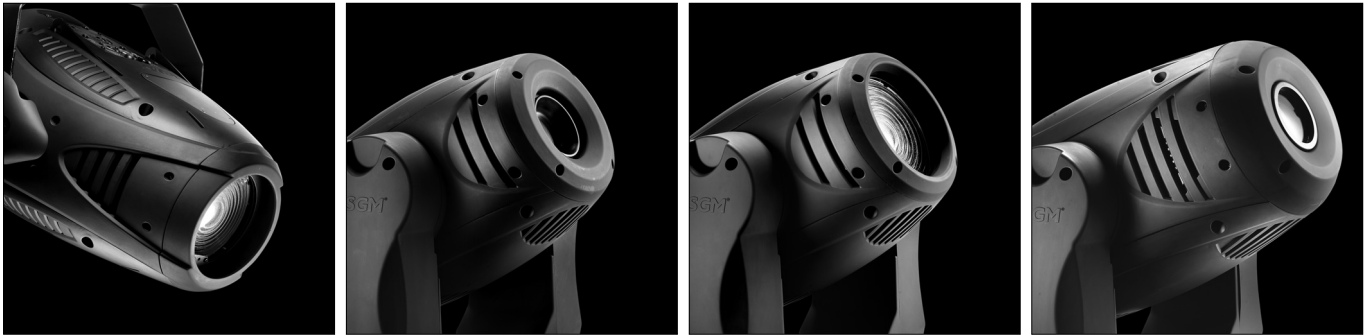
- GB
- I
- D
- F
- E
- P



Vi ringraziamo per aver acquistato un prodotto X Line.

Per ottenere i migliori risultati dal suo utilizzo, vi preghiamo di leggere attentamente questo manuale di istruzioni. Al suo interno troverete le informazioni tecniche e le specifiche d'uso del prodotto. Nelle pagine in appendice troverete inoltre schemi e diagrammi destinati all'assistenza tecnica.

Nell'ottica di qualità, è possibile che l'Azienda apporti migliorie ai suoi prodotti, per cui consigliamo di allegare il manuale al prodotto stesso e di trascrivere il numero di serie nell'ultima pagina della copertina: utilizzando il presente manuale con un apparecchio fabbricato prima o dopo la sua stampa, potrebbero esserci discrepanze fra l'apparecchio e quanto riportato nel manuale stesso.



Thank you for buying an X Line product.

To obtain the best results, please carefully read this instruction manual in which you will find technical information and specifications for use of the product, as well as diagrams for technical service in the appendix.

In light of quality, the company may make improvements to its products. Therefore, we recommend that the manual be attached to the product and the serial number copied onto the back cover: using this manual with equipment manufactured before or after its printing, might show discrepancies between the equipment and the information listed in the manual.

Wir danken Ihnen für den Kauf eines Produkts von X Line.

Zur Erzielung der besten Resultate bei der Benutzung bitten wir Sie, die vorliegende Bedienungsanleitung aufmerksam zu lesen. Darin finden Sie die technischen Informationen sowie die Anweisungen für die Benutzung des Produkts. Im Anhang befinden sich außerdem die Schaltpläne und Diagramme für den Kundendienst.

Behält sich das Recht vor, Verbesserungen an den Produkten vorzunehmen und deshalb empfehlen wir, die Bedienungsanleitung dem Produkt stets beizulegen und die Seriennummer auf der letzten Seite des Umschlags einzutragen. Bei der Verwendung dieses Handbuchs mit einem Gerät, das vor oder nach der Drucklegung produziert wurde, können sich Abweichungen zwischen Gerät und dem Inhalt des Handbuchs ergeben.

Nous vous remercions d'avoir acheté un produit X Line.

Pour optimiser son utilisation, nous vous prions de bien vouloir lire attentivement cette notice où vous trouverez les informations techniques et les caractéristiques d'utilisation du produit. En outre, vous trouverez également, dans les pages en appendice, les schémas et les diagrammes concernant l'assistance technique.

Le concept de qualité, lui permet d'améliorer continuellement ses produits et c'est pourquoi nous vous conseillons de joindre la notice au produit et d'inscrire le numéro de série sur la page de couverture. En effet, si on l'utilise avec un appareil fabriqué avant ou après son impression, il peut y avoir des différences entre l'appareil et ce qui figure dans la notice.

Les estamos sumamente agradecidos por haber elegido un producto X Line.

Para obtener los mejores resultados, les rogamos leer detenidamente el presente manual de instrucciones. El mismo contiene las informaciones técnicas y las indicaciones de uso del producto. Las páginas anexas contienen además los esquemas y diagramas necesarios para la asistencia técnica.

Para mantener la calidad, es posible que la Empresa aporte mejoras sus productos, por ello les aconsejamos conservar el manual junto con el aparato correspondiente y escribir su número de serie en la última página del manual; si en cambio se utiliza el presente manual con un aparato fabricado antes o después de su impresión, es probable que existan discrepancias entre el aparato y las indicaciones del mismo.



Sommario

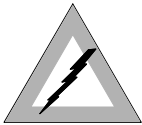
- 1. Introduction..... 2
- 2. Important Safeguards 2
 - Danger of Electric Shock 2
 - Danger of Burns 2
 - Danger of Explosion..... 3
- 3. Unpacking & Inspection..... 3
- 4. Setup..... 3
- 5. Operation 4
- 6. Hanging Bracket..... 4
- 7. Control Module Operation For SGM X-10 Module..... 5
 - X-10 Remote Control External View 6
- 8. Control Module Operation For SGM X-30 Module..... 6
 - X-30 Remote Control External View 6
- 9. SGM On-Board DMX Module Settings 6
- 10. Maintenance 7
- 11. Storage..... 7
- 12. Performance Notes 7
- 13. Specifications..... 7
- 14. IDEA FAZER 1000 External view 8
- 15. SGM Idea Fazer 1000 on-board DMX settings..... 9
 - Channel A..... 9
- 16. Limited Warranty..... 9

1.00	10/07/2008	SGM	Starting Document
Revision	Date (mm/gg/aa)	Author	Description

1. INTRODUCTION

Thank you for choosing an SGM Idea Fazer 1000. You now own a rugged and powerful state-of-the-art machine. For SGM Idea Fazer 1000 model Machine, you will have an optional function of W-DMX. Please refer to W-DMX Instruction Manual. Prior to use, we suggest that you carefully read all of the instructions. By following the suggestions found in this user manual, you can look forward to the reliable and satisfactory performance of your SGM Fog Machine for years to come.

Please follow these operation, safety and maintenance instructions to ensure a long and safe life for your fog machine.



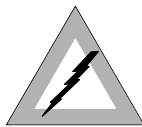
Caution!

Risk of electric shock. Disconnect the appliance from the electric supply before removing the cover.

Note: there are no user serviceable parts inside.

2. IMPORTANT SAFEGUARDS

Danger of Electric Shock



- Keep this device dry.
- For inside use only. Not designed for outside use.
- For all models, use 3-prong grounded electrical outlet only. Prior to use take care to determine that the unit is installed at the rated voltage.
- Always unplug your SGM Fog Machine before filling its tank.
- Keep fog machine upright.
- Unplug the machine when not in use.
- This machine is not water- or splash-proof. If moisture, water, or fog liquid gets inside the housing, immediately unplug the unit and contact a service technician or your SGM dealer before using it again.
- No user serviceable parts inside. Refer to your SGM dealer or other qualified service personnel.

Danger of Burns



- For adult use only. Never leave the unit running unattended.
- Never aim the output nozzle directly at people.
- Fog machine output area is very hot. Avoid coming within 60 cm of the output nozzle during operation.
- Locate the fog machine in a well-ventilated area. Never cover the unit's vents. In order to guarantee adequate ventilation, allow a free air space of at least 20 cm around the sides and top of the unit.
- Never aim the output nozzle at open flames.
- If the supply cord is damaged, it must be replaced by manufacturer or its service agent or similarly qualified personnel in order to avoid a hazard.
- The output nozzle becomes very hot during operation (3000C). Keep flammable materials at least 50 cm away from the nozzle.
- Always allow your SGM Idea Fazer 1000 to cool down before attempting to clean or service it.

Danger of Explosion



- Never add flammable liquids of any kind (oil, gas, perfume) to the fog liquid.
- Use only the high-quality, water-based SGM fog liquid. (FLG) Other fog liquids may cause clogging or "spitting".
- Always make sure there is sufficient liquid in the fog liquid tank. Operating this unit without liquid will cause damage to the pump as well as over-heating of the heater.
- If your SGM Fog Machine fails to work properly, discontinue use immediately. Drain all fog liquid from the tank, pack the unit securely (preferably in the original packing material), and return it to your SGM dealer for service.
- Always drain tank before mailing or transporting this unit.
- Never drink fog liquid. If it is ingested, call a doctor immediately. If fog liquid comes in contact with skin or eyes, rinse thoroughly with water.

Important!

Pay attention to all warning labels and instructions printed on the exterior of your SGM Idea Fazer 1000.

3. UNPACKING & INSPECTION

Open the shipping carton and verify that all equipment necessary to operate the system has arrived intact.

Before beginning initial setup of your SGM Fog Machine, make sure that there is no evident damage caused by transportation. In the event that the unit's housing or cable is damaged, do not plug it in and do not attempt to use it until after contacting your SGM dealer for assistance.

The shipping carton should include the following items:

- 1 Idea Fazer 1000 machine with power cable
- 2 X-10 Control Module
- 3 Fluid Tank
- 4 User manual

Before beginning initial setup of your Idea Fazer 1000, make sure that there is no evident damage caused by transportation. In the event that the unit's housing or cable is damaged, do not plug it in and do not attempt to use it until after contacting your SGM dealer for assistance.

4. SETUP

- 1 Remove all packing materials from shipping box. Check that all foam and plastic padding is removed, especially in the nozzle area.
- 2 Place fog machine on a flat surface and remove fog liquid tank cap.
- 3 Fill with only SGM Fog Fluid. SGM Idea Fazer 1000 only works with uncontaminated SGM FLG Fog Fluid. Other fluids may cause spitting and serious clogging problem and could result in the production of an unhealthful fog. The use of other fluids will void the warranty of the SGM Idea Fazer 1000. When filled, place cap back on liquid tank.

Firmly attach the control module cable to the connector inside the rear chamber of the machine.

WARNING!

Use of any fluid other than SGM fog fluid or modification or attempted to unauthorized repair of the Idea Fazer 1000 will immediately invalidate the warranty.

5. OPERATION

- 1 The plug is positioned that the plug is accessible when machine is in use.
- 2 Plug power cord into a grounded electrical outlet. Turn power switch on rear of unit to "ON" position. Warm-up is complete when the display on control module shows "Ready to Fazer."
- 3 To emit fog, press the appropriate button on the control module for the desired length of time.
- 4 The control unit's display will cycle "Warming up" and "Ready to Fog" as the machine re-heats to the proper operating temperature.
- 5 When the fluid is running low, the LED inside the tank chamber starts blinking for two minutes and then stop operation to protect the pump from running dry.
- 6 Always monitor liquid level to prevent interrupted operation.
- 7 For further information on operating your SGM Idea Fazer 1000, see the section titled, "Control Module Operation".

Caution!

"Visibility during operation is reduced"

6. HANGING BRACKET

If your model includes a mounting bracket designed for overhead installation, it may be installed at floor level or suspended overhead. If the unit is to be mounted using the bracket, it is important that the fog does not shoot directly at any one's face. Whatever installation method you choose, do not allow the unit to have more than a 15 degree angle of inclination.

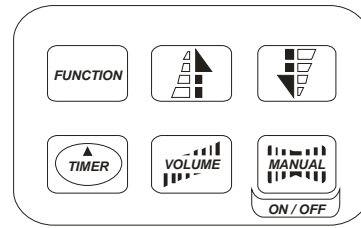
Important!

Always monitor tank fluid level as you are fogging. Running a fog machine with no fluid can permanently damage the unit.

If you experience low output, pump noise or no output at all, unplug immediately. Check fluid level, the external fuse, control module connection, and power from the wall. If all of the above appears to be O.K., plug the unit in again. If fog does not come out after holding the control module button down for 30 seconds, check the hose attached to the tank to make sure there is fluid going through the hose. If you are unable to determine the cause of the problem, do not simply continue pushing the control module button, as this may damage the unit. Return the machine to your SGM dealer immediately.

7. CONTROL MODULE OPERATION FOR SGM X-10 MODULE

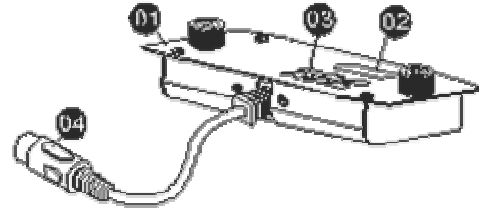
1. LCD-Display
2. **FUNCTION** Function-button
Sub-menus:
-->Interval Set
-->Duration Set
-->Timer Out
-->Volume Out
 -->Nonstop Burst
-->DMX 512 Add
-->Fan Speed
-->Heat & Fan
3. **UP/DOWN** Up-/Down-button
4. **TIMER** Timer-button
5. **VOLUME** Volume-button
6. **MANUAL** Manual-button



- **X-10:** 10 meter wired multi-function remote control module with 5-pin XLR connector for SGM Idea Fazer 1000 model. Its interface allows the operator to customize fog machine functions by adjusting fogging duration, interval and volume. Its LCD displays current operating parameters, which are automatically stored in non-volatile memory, allowing the machine to be powered down without losing function settings. Instructions below:
 1. Via **FUNCTION**, you can adjust the desired settings in the sub-menus. After pressing the **FUNCTION** once, the display shows **INTERVAL SET**. Adjust the interval between each fog emission (within the range of 1 to 200 seconds) with the **UP/DOWN** buttons. By pressing **FUNCTION** twice, the display shows **DURATION SET**. Adjust the duration of each fog emission (within the range of 1 to 200 seconds) with the **UP/DOWN** Buttons. By pressing the **FUNCTION** the 3rd time, the menu **TIMER OUT** is displayed; you can adjust the output volume with the **UP/DOWN** buttons. Pressing **FUNCTION** again to enter the next menu, **VOLUME OUT**. Under this menu, you can set the fog output in % for the **VOLUME** function. Additionally, if you press 1unit **UP** beyond value 100% or 1 unit **DOWN** below 1%, you can then activate continuous fogging with the sub-menu **NON STOP BURST**. by pressing **FUNCTION** again, the menu **DMX 612 ADD** appears. This refers to adjusting the DMX address for DMX control or synchronization. Adjust the desired DMX-address with the **UP/DOWN** buttons. By pressing **FUNCTION** again, you will see **UP/DOWN** appearing with **LOW>HI** on the screen. You can adjust the fan speed by **UP/DOWN** key. Pressing **FUNCTION**, the sub-menu **HEAT&FAN OPEN** appears where in this sub-menu you can select whether you wish to have the heater and fan turn **UP/DOWN** accordingly. In this sub-menu screen, you can have the heater and fan turn on or off by pressing **MANUAL**.
 2. Press the **TIMER** button to activate the timer function according to the parameters set in the **FUNCTION** sub-menus. The display shows the adjusted interval and the device counts the seconds down to "0". After that, the fog emission is triggered at the volume adjusted under sub-menus in **TIMER OUT**. The duration depends on the settings adjusted under menu **DURATION SET**. If you wish to deactivate the timer function, press the main **TIMER** button once more.
 3. Press the **VOLUME** button for immediate triggering of the fog emission at the volume adjusted under menu **VOLUME OUT**. Press the **VOLUME** button once more in order to stop the fog emission.
 4. Keep the **MANUAL** button pressed for immediate triggering of the fog emission at 100% volume. This function overrides all other functions in action. Release the button in order to stop the fog emission.

X-10 Remote Control External View

- 01. Contol Module
- 02. L.C.D. Screen
- 03. Rubber Keypad
- 04. Cable For Remote Control (10M/5Pin)

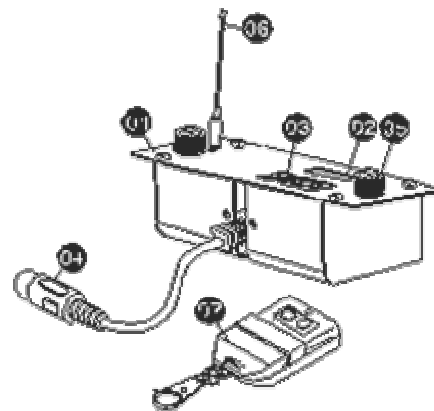


8. CONTROL MODULE OPERATION FOR SGM X-30 MODULE

X-30: All the X-10 features plus wireless capability. Wireless operation is possible up to a distance of 50 meters. The address can be set from 0 to 8, which means total 9 different units can be controlled separately or in any combination desired. Press function to cycle to RF mode to select desired address number. Make sure the address setting on the X-30 matches the address setting on the transmitter. There are two buttons on the transmitter. Blue one is to emit fog and Red one is to stop the operation.

X-30 Remote Control External View

- 01. Contol Module
- 02. L.C.D. Screen
- 03. Rubber Keypad
- 04. Cable For Remote Control (2M/5Pin)
- 05. Securing Knob
- 06. Antenna
- 07. Transmitter



9. SGM ON-BOARD DMX MODULE SETTINGS

Value	Function
0 - 55	OFF
6 - 255	Volume Control (5% - 100%)

On Idea Fazer 1000 model, DMX use only 1 channel to control volume output operation. On Idea Fazer 1000 use 2 channels to control both fog volume and fan volume. For IDEA FAZER 1000 the fans have 3 levels of fan operation speed-->low, mid-range, high. Whatever channel you select on the unit, the channel next to it will be selected automatically for fan volume control. Each channel has a value range of 0 to 255. Timer functions such as duration and interval can be programmed using the DMX controller or the DMX control software being used by lighting and effects operator.

If Channel has a value from 0 to 5, the unit is OFF.

Between the values 6 to 255 the volume of fog output is regulated. With 6 being the minimum volume of fog produced and 255 the maximum. The volume output rises as the DMX value is increased.

Note: In the example above, if the machine were assigned the DMX address of 124, Channel would correspond to DMX address 124. So the channel 125 will be used to control the speed of the fan.

In general, SGM Idea Fazer 1000 conforms to the following performance specifications:

- 1. Average Operating temperature = 2500C
- 2. Idea Fazer 1000 can maintain maximum output for 35-40 seconds or more

10. MAINTENANCE

Do not allow the fog liquid to become contaminated. Always replace the caps on the fog liquid container and the fog machine liquid tank immediately after filling. After every 40 hours of continuous operation, it is recommended to run a cleaning solution composed of 80% distilled water and 20% ACETIC ACID through the system to prevent the accumulation of particulate matter in the heating element.

The recommended cleaning regimen is as follows:

- 1 Empty all fog liquid from the machine. Add cleaning solution (about 500ml) to the tank. Plug unit in and begin warming up.
- 2 Run the unit in a well-ventilated area until the tank is almost empty. Do not allow the pump to run dry.
- 3 Replace nozzle.
- 4 Cleaning is now complete. Refill with fog liquid. Run the machine briefly to clear any cleaning solution from the pump and heater.
- 5 Do not operate the fog machine without liquid at any time.

Note: All fog machines are prone to clogging due to the thick consistency of fog liquid and the high temperature at which it vaporizes. However, a properly maintained fog machine should provide years of reliable use.

Clean with a dry cloth only. Store dry. Cleaning your fog machine regularly will help reduce costly replacement and repair charges.

11. STORAGE

1. When storing run distilled water (not tap water) through the system as described in the cleaning regimen above. This will help avoid any particles condensing inside the pump or heater.
2. It is strongly recommended to test-run the machine on a monthly basis in order to achieve its best fogging condition. A test-run consists of warming up the machine followed by a few minutes of emission. After that, follow Step 1 under Storage.

Cleaning your fog machine regularly will help reduce costly parts replacement and repair charges.

12. PERFORMANCE NOTES

It is recommended that you set the Fan output at 100% and Fog Volume output at 15-20%. With such setting, you will have continuous output of very fine haze effect

Whenever enormous effect is required, press Manual key to emit faze at 100% output instantly.

For quiet operation, lower down Fan output as desired.

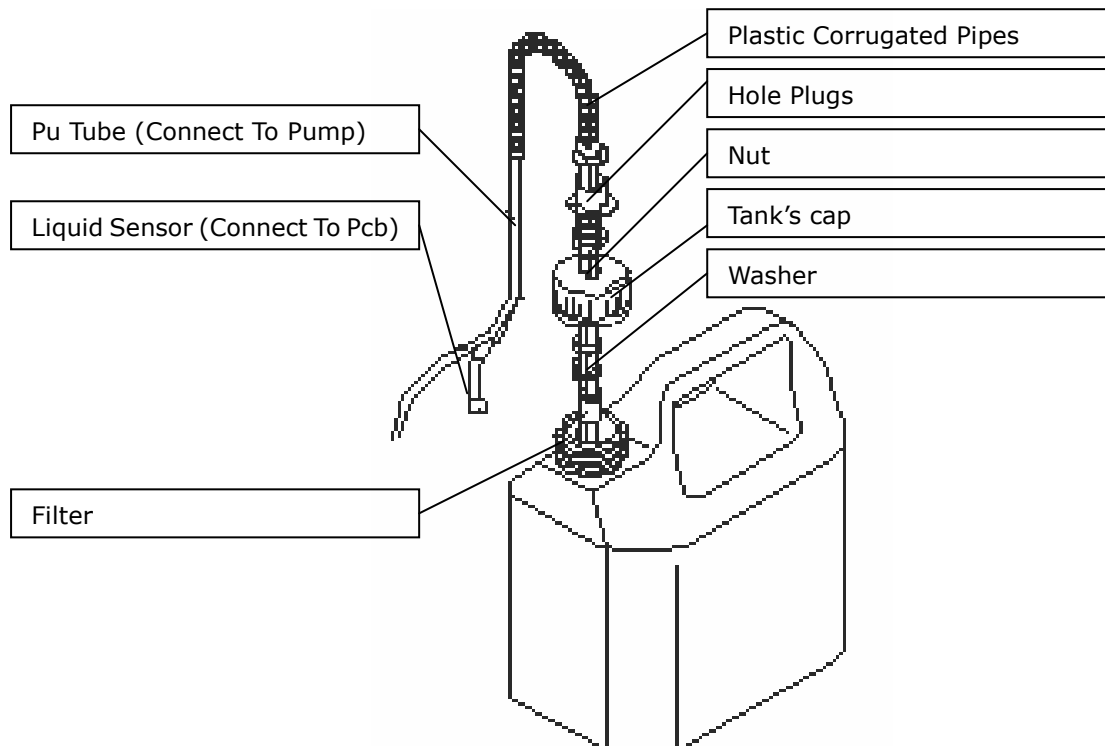
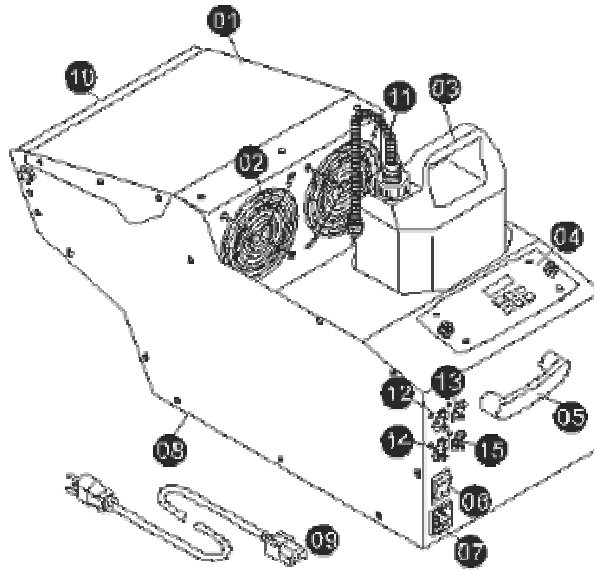
Idea Fazer 1000 has a recycling period after long bursts(About 35- 40seconds) when the machine will shut itself down for a short period (about 80seconds) in order to heat up again. During this time, no fog can be produced.

13. SPECIFICATIONS

MODELS	IDEA FAZER 1000
POWER	AC100V - AC120V - AC230V - AC240V, 50Hz-60Hz
HEATER	1,000W
OUTPUT	105 m3/min
OUTPUT PRESSURE	0.686 pa
HEAT UP TIME	10Min
FLUID CONSUMPTION RATE	45 min / liter (100% Output) 120 min / liter (30% Output)
TANK CAPACITY	2,4Liter
WEIGHT	20,5kg
DIMENSIONS (LxWxH)	653x275x281 mm

14. IDEA FAZER 1000 EXTERNAL VIEW

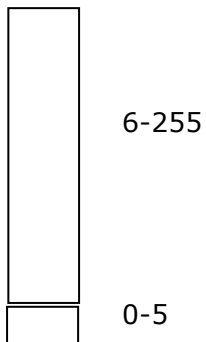
- | | |
|---|---|
| <ul style="list-style-type: none"> 01. Body 02. Guardrail 03. Tank 04. Wired Remote Module (X-10) 05. Handle 06. Rock Switch/Power 07. Power Inlet Socket & Fuseholder
(120VAC 250V/T10A)
(230VAC 250/F5A) | <ul style="list-style-type: none"> 08. Foot 09. Power Cord and Plug 10. Vent 11. Plastic Corrugated Pipes 12. Control Inlet Socket (3 Pin XLR for DMX) 13. Control Outlet Socket (3 Pin XLR for DMX) 14. Control Inlet Socket (5 Pin XLR for Remote) 15. Control Outlet Socket (5 Pin XLR for Remote) |
|---|---|



Assembling Please be certain that all parts indicated here are assembled incorrect order. Please note that liquid sensor and the filter must be inserted into the tank properly

15. SGM IDEA FAZER 1000 ON-BOARD DMX SETTINGS

Channel A



0 - 5 = OFF

6 -255 = Volume Control (5% - 100%; 255 is the maximum output)

The Idea Fazer 1000 have on-board DMX control. These models use 2 channel to control volume output operation and Fan operation. Each channel has a value range of 0 to 255. Timer functions such as duration and interval can be programmed using the DMX controller or the DMX control software being used by lighting and effects operator.

If Channel A has a value from 0 to 5, the unit is OFF.

Between the values 6 to 255 the volume of fog output is regulated. With 6 being the minimum volume of fog produced and 249 approaching the maximum. The volume output rises as the DMX value is increased.

Note: In the example above, if the machine were assigned the DMX address of 124, Channel A would correspond to DMX address 124 and channel 125 will be selected automatically for fan control.

In general, SGM Idea Fazer 1000 with onboard DMX conform to the following performance specifications:

1. Average Operating temperature = 250°C
2. Idea Fazer 1000's Nonstop Burst cannot be controlled or set from DMX; however, you can achieve the nonstop output by adjusting the volume below 50% on your X-10 or X-30.

16. LIMITED WARRANTY

- The unit is guaranteed for 24 months from the date of purchase against manufacturing material defects.
- Breakdown caused by carelessness and improper use of the fixture is excluded.
- The guarantee is no longer valid if the unit has been tampered with or repaired by unauthorized personnel.
- Replacement of the fixture is not foreseen by the guarantee.
- External parts, knobs, switches, removable parts and lamps are excluded from the guarantee
- Transport costs and related risks are borne by the fixture's owner.
- The guarantee is valid to all effects only on presentation of the guarantee certificate to the manufacturer or the nearest SGM technical assistance centre.
- Always quote the unit's serial number and model when contacting your reseller for information or assistance.

NOTE: USE OF ANY FLUID OTHER THAN SGM FOG FLUID WILL VOID WARRANTY.



