

Main Features

- 1 Using high brightness of original packed Epistar 2835 SMD chip which achieves **120lm/w**
- 2 LED Corn Bulbs can replace conventional CFL lamps. Bypass or remove existing ballast and wire direct to socket.
- 3 Unique construction design easier for power supply and light source replacement if needed, with full beam angle (360°)
- 4 Fin aluminum heat dissipation system (PATENT design). The fan of active air exchanging cooling system in order to speed up heat dissipation
- 5 No spot, no black area, long life span and less brightness decay
- 6 Various lamp bases are available, a wide range of applications (E39/E40 mogul, E26/E27 medium)
- 7 Wide voltage AC100-300V, High efficiency constant current drives, Efficiency of power supply is more than 90%.
- 8 Those LED Corn Bulbs are also available with PC cover which has transparent and milky cover
- 9 Those LED Corn Bulbs are also available for dimmable 0-10V
- 10 No magnetic disturbance influence and CE & RoHS standard compliant
- 11 No UV and near-IR radiation in the light beam.
- 12 3 years warranty



Without Cover Transparent Cover Milky Cover

80% ENERGY SAVING*	3 YEARS WARRANTY	RECYCLABLE				
CRI > 80	120Lm/W	50,000 Hours	WW (2800-3000K) NW (4000-4500K) CW (6000-6500K)			

Application projects



40W LED Corn Bulb



150W Traditional HPS

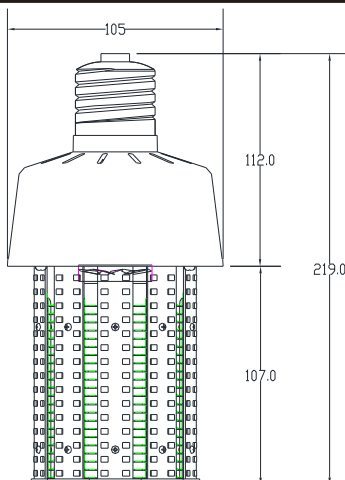


American walkway project

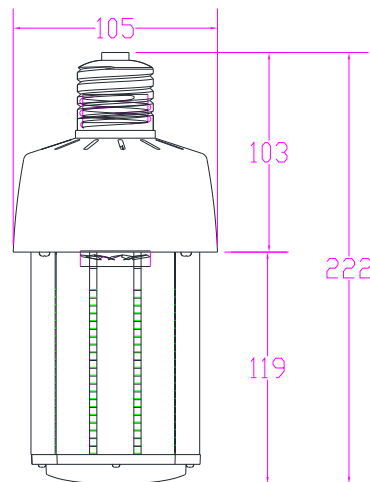


40W LED Corn Bulb

Dimension



without pc cover



with pc cover

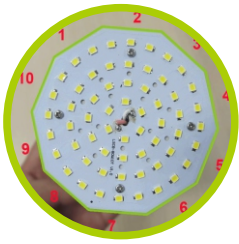


Product Specification

Main Specification T=25 Celsius Degree		
Parameters	Item Number	VLLS-CB-50WXY-D
Light	LED Type	440pcs 2835 SMD LEDS
	Luminous Flux(lm)	6200Lm
	Color Temperature (K)	2700-3200K/4000-4500K/6000-6700K
	CRI	> 80
	Lifespan (Hrs)	> 50,000Hours
Electricity	Input Voltage (V)	100-300VAC (277VAC available)
	Frenquency (Hz)	50/60 Hz
	Output Wattage (W)	50 Watt
	Power Factor	> 0.95
	Dimmable method	0-10V Dimmer
	Capability	Regular 0-10V dimmer available
	Power Efficiency	>0.92
	Replacement	175W-225W Metal Halide / HPS / Son-T/ HQI
Structure	Materials	Aluminum fin heat sink+MPCB+PBT base(fire proof)
	Dimension	(No cover) E40:Dia105*219mm E27:Dia105*210mm (Cover) E40:Dia105*231mm E27:Dia105*222mm
	PC cover options	1,without pc cover 2,with milky cover / with transparent cover
	Base Options	E40/E39(Mogul) E27/E26(Medium)
	IP Rating	IP60
Certificate	Working Temp/humidity	-25 - 55 Celsius degree 10% - 90% R.H.
	Storage Humidity	-40 - 85 Celsius Degree 0% - 95% R.H.
	Certificate	ETL CETL TUV FCC SAACE
	Environmental cert	RoHS



Advantages



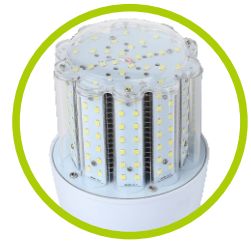
Round 10 sides shine out



Wireproof base



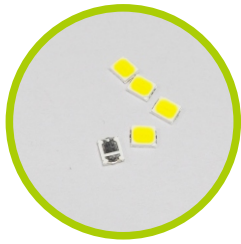
Milky cover



Transparent cover



Top Brand Sunon Fan



High Brightness Epistar 2835



External Driver



Aluminum fin heat sink
Thermal Pad built-in

Test Result

DATA OF LAMP		PHOTOMETRIC DATA			
		Eff: 113.33 lm/W			
MODEL		I _{max} (cd)	578.4	S/MH (C0/180)	2.79
NOMINAL POWER (W)	55	LOR (%)	100	.S/MH (C90/270)	2.79
RATED VOLTAGE (V)	232	TOTAL FLUX (lm)	6233.3	η UP, DN (C0-180)	23.0, 27.1
NOMINAL FLUX (lm)	6233.3	CIE CLASS	DIFFUSE	η UP, DN (C180-360)	22.4, 27.5
LAMPS INSIDE	1	η up (%)	45.4	CIBSE SHR NOM	2.00
TEST VOLTAGE (V)	231.0	η down (%)	54.6	CIBSE SHR MAX	

What to be aware of (Cautions)?

1. Read the user's manual in detail, make sure product fits environmental condition.
2. Cut the power off before installation
3. Do not run this led corn bulb over 300VAC unless it's labeled.
4. Do not install this LED corn bulb where ambient temperatures exceed 55 degrees Celsius or over corrosive gas
5. Indoor, Outdoor use in outdoor luminaires (minimum Ip65)
6. Don't throw away casually

Where to use LED Corn Bulb ?

1. Outdoor street lighting, wall pack lighting, canopy lighting, post top lighting, high bay light, warehouse lighting, pathway lighting, factory lighting, supermarket lighting, parking lot and stadium lighting etc.



Parking Lot



Pathway fixture



Wall Pack Fixture



Street fixture



Cobra Fixture



Street fixture



Post top fixture



High Bay fixture

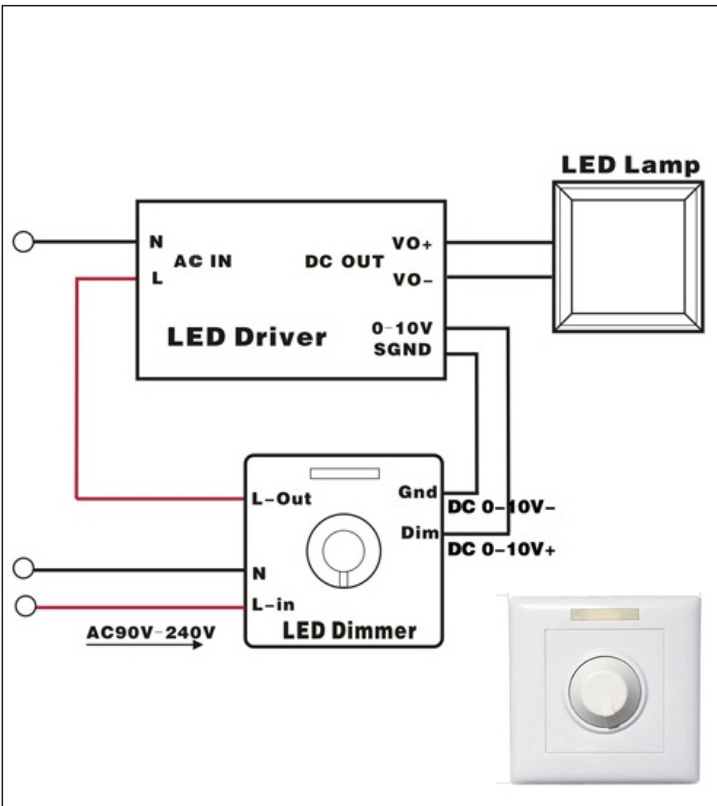


Droplight fixture

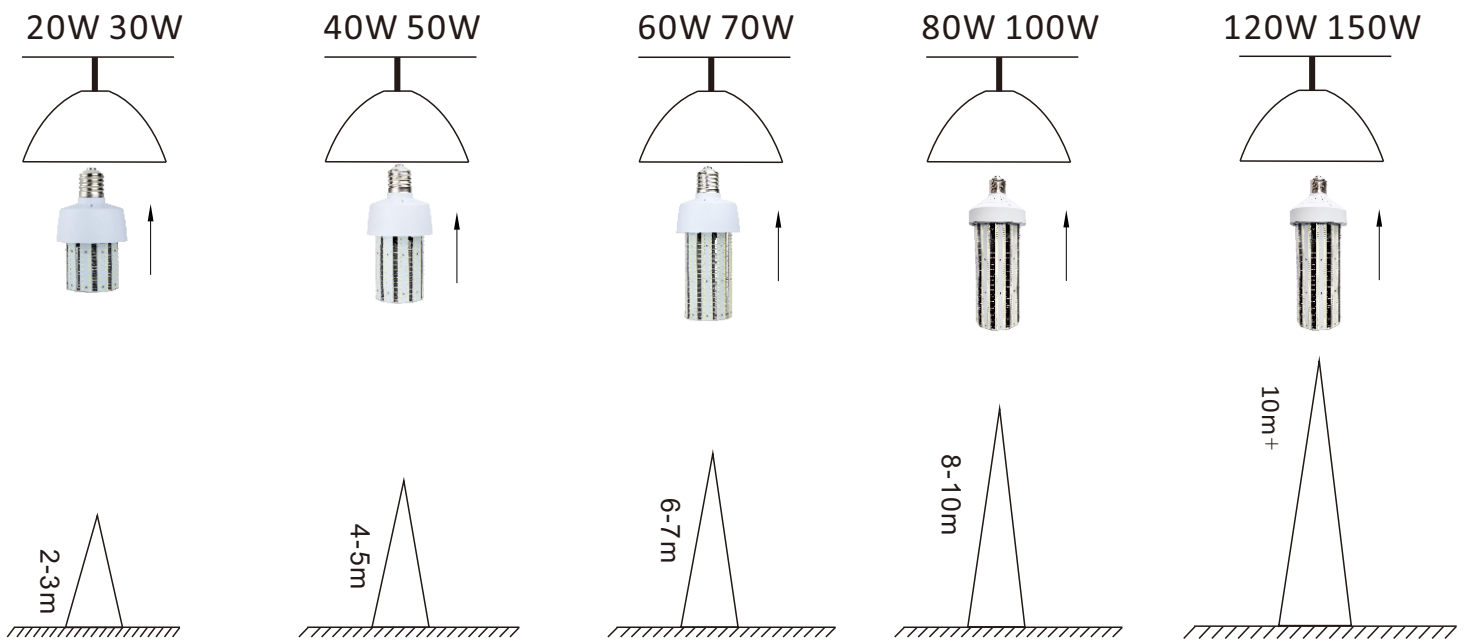


Wall Light fixture

Wiring Diagram



Installation suggestion



- 1, LED Corn Bulbs are retrofit led bulbs which are with the latest cooling heat sink technology Thermal was blew out from sides borad gap rapidly.And they are just perfect to replace the existing matel halide,high pressure sodium,HQI,Son-T,halogen etc
- 2, Since there are various wattage options for high bay lighting application,different wattage has its perfect lighting effect at different height
- 3, 20W = 50-75W MH 30W=75-105W MH 40W=125-150W MH
 50W = 175-225W MH 60W=225-250W MH 70W = 250W-275W MH
 80W = 250-300W MH 100W = 300W MH 120W = 400W MH 150W= 500W MH

Packing Details

Packed QTY	12 Pieces
Net Weight	0.45Kg/pc
Gross Weight	8.75Kg/ctn
Box Size	13cm*13cm*27cm
Carton Size	55cm*44cm*34cm

