

USER MANUAL OF ONLINE PURCHASE SYSTEM

This is a web based application, accessible to all vendors over internet. User has to select the Plant type (SML, BUS, and ISUZU) as per his/her requirement before login into system. This application manages the following functions.

Vendor Level Functions:

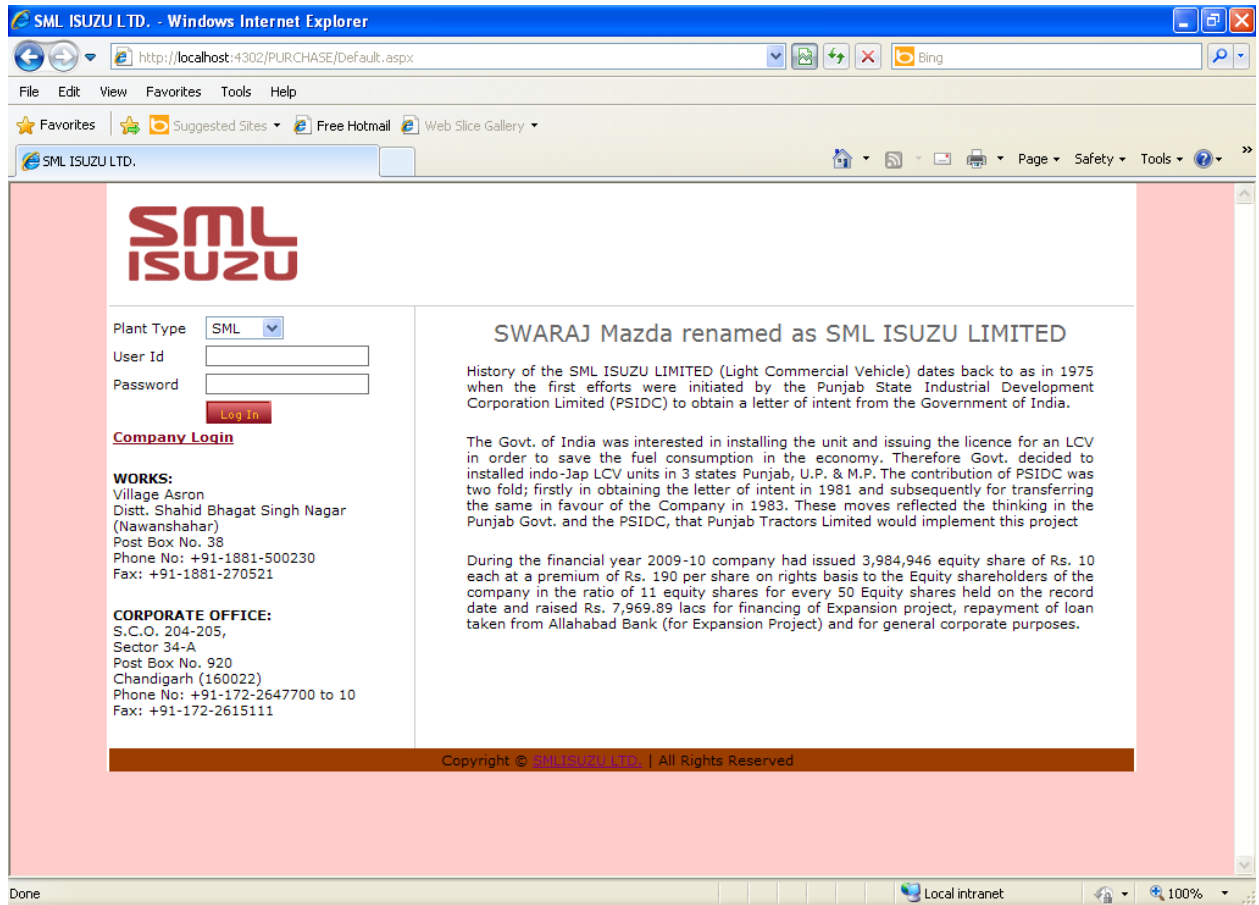
1. Vendors can view the purchase order (PO) detail, concerned PO schedule. User can take the printouts of these documents as per his/her requirements.
2. Vendors can view the MRR detail containing accept qty, reject qty, MRR authorized status etc.
3. Vendors will enter the Dispatch detail
4. Vendors can update their password.
5. Vendors can view the news/ bulletins posted by SMI ISUZU

Following steps should be taken to perform above functions.

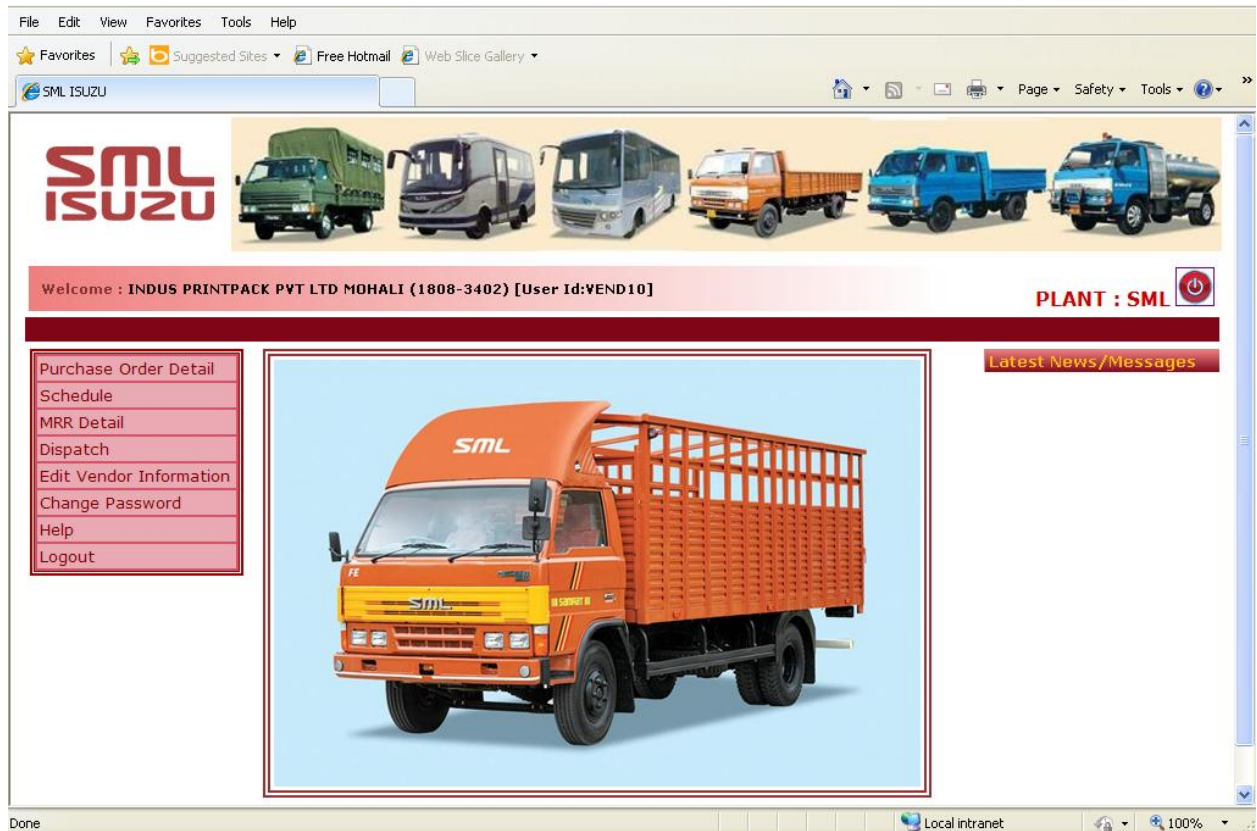
1. Open internet explorer.
2. Enter <http://smlisuzu.in>, following screen will appear



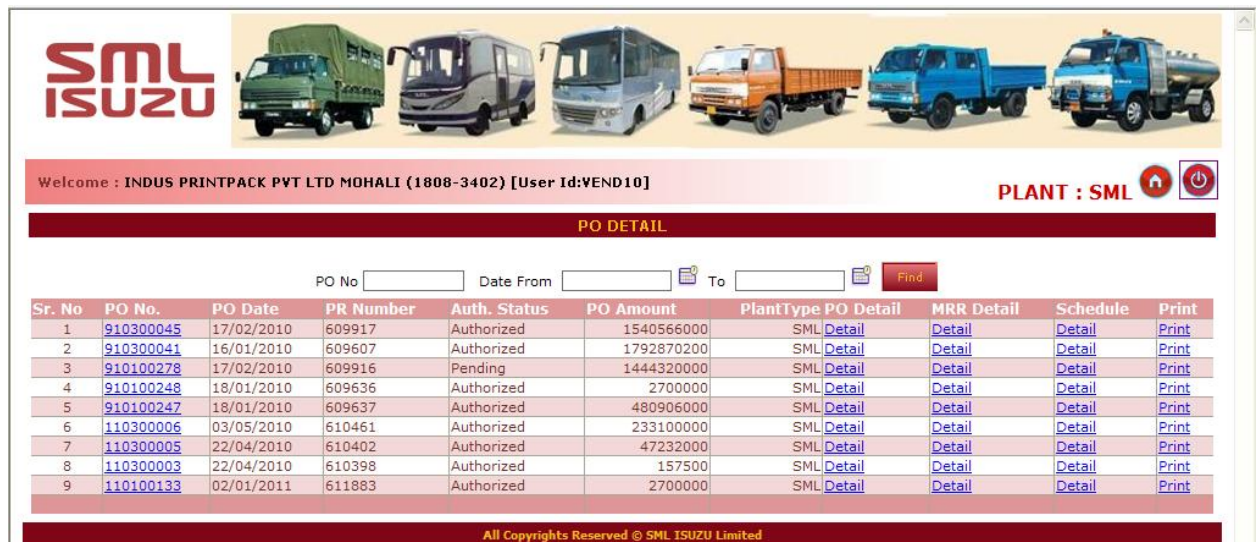
3. Click on vendor login button following screen will appear.



4. Select Plant Type and enter valid user id and password, then click on Log In button. Following menu screen will appear.

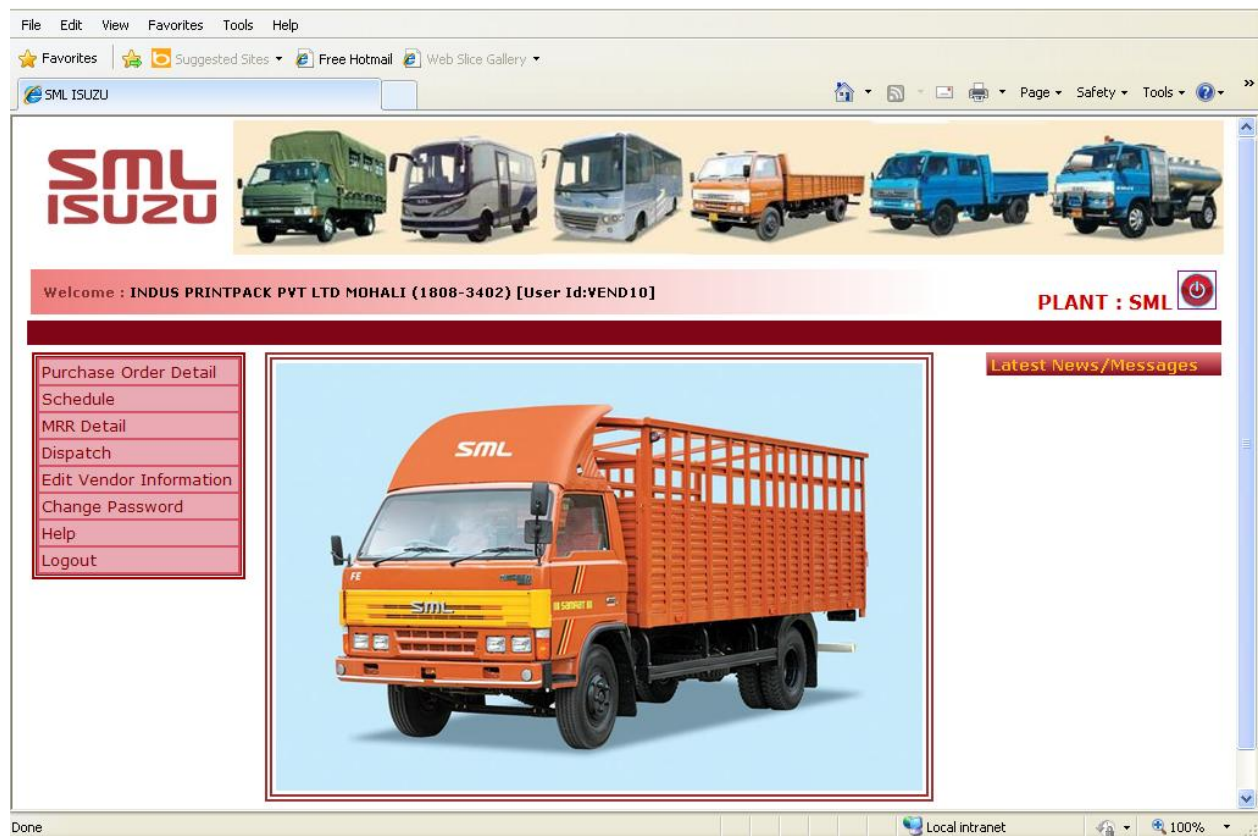


- For viewing purchase order detail, click on Purchase order detail menu, following screen will appear.



Using this screen, by clicking on respective link user can view the PO Item detail, MRR detail, PO schedule. This screen also provides the printing options to user.

- Click on Home button placed at the right hand side of the screen (near to Plant: SML) for main menu screen.



- Through this menu you can view the Po schedule and MRR Detail.
- For dispatching material to SML ISUZU, Vendor user will click on dispatch detail-->Create Dispatch, following screen will appear.

SML ISUZU - Windows Internet Explorer

http://localhost:4302/PURCHASE/firmCreateDispatch.aspx

File Edit View Favorites Tools Help

SML ISUZU

PLANT : SML

Welcome : INDUS PRINTPACK PVT LTD MOHALI (1808-3402) [User Id:VEND10]

CREATE DISPATCH

PO No Date From To

Create	PO No.	PO Date	PR Number	Auth. Status	PO Amount	PlantType
Create	910300045	17/02/2010	609917	Authorized	1540566000	SML
Create	910300041	16/01/2010	609607	Authorized	1792870200	SML
Create	910100278	17/02/2010	609916	Pending	1444320000	SML
Create	910100248	18/01/2010	609636	Authorized	2700000	SML
Create	910100247	18/01/2010	609637	Authorized	480906000	SML
Create	110300006	03/05/2010	610461	Authorized	233100000	SML
Create	110300005	22/04/2010	610402	Authorized	47232000	SML
Create	110300003	22/04/2010	610398	Authorized	157500	SML
Create	110100133	02/01/2011	611883	Authorized	2700000	SML

All Copyrights Reserved © SML ISUZU Limited

Done Local intranet 100%

start SPDWEB... PURCHAS... SML ISUZ... My Docum... USER. MA... 2:19 PM

If this screen has too many record to find the required PO Number then use search criteria to find out particular PO against which user has to create dispatch. Then click on Create button at the left side of the particular record, following screen will appear.

SML ISUZU - Windows Internet Explorer

http://localhost:4302/PURCHASE/frmVendorDespatch.aspx

File Edit View Favorites Tools Help

SML ISUZU

Welcome : INDUS PRINTPACK PVT LTD MOHALI (1808-3402) [User Id:VEND10] **PLANT : SML**

VENDOR DISPATCH DETAIL

Vendor Dispatch No. Purchase Order No. Purchase Order date

Bill No. Bill Date

Vehicle Type Truck No.

Transporter Code Driver Name

Draft ECN No. Weight

Cenvat Copy

Sr. No	Part No	Part Description	Rate NDP	Ord Qty	SCH Qty	Qty	UOM
1	XR061052300	MULTIPACK CORRUGATED BOX 25"X16.5"X17"-5 PLY	110.70	900000	400		NUMBER
2	XR061052302	MULTIPACK CORRUGATED BOX 17"X17"X13"-5 PLY	87.60	900000	500		NUMBER
3	XR061052304	MULTIPACK CORRUGATED BOX 17"X17"X4.5"-5 PLY	61.50	900000	800		NUMBER
4	XR061052305	MULTIPACK CORRUGATED BOX 13.5"X13.5"X12.5"-5 PLY	61.50	900000	500		NUMBER
5	XR061052306	MULTIPACK CORRUGATED BOX 36"X16.5"X21"-7 PLY	200.40	900000	500		NUMBER
6	XR061052307	MULTIPACK CORRUGATED BOX 21"X21"X9"-5 PLY	114	900000	500		NUMBER
7	XR061052308	MULTIPACK CORRUGATED BOX 14.5"X14.5"X8"-5 PLY	53.52	900000	800		NUMBER
8	XR061052309	MULTIPACK CORRUGATED BOX 15.5"X15.5"X11"-5 PLY	69.60	900000	800		NUMBER

Submit

All Copyrights Reserved © SML ISUZU Limited

Done Local intranet 100%

start SPDWEB... PURCHAS... SML ISUZ... My Docum... USER, MA... 2:22 PM

In the above screen user will view only schedule items related to particular PO with schedule quantity. User will enter the required information and click on submit button. On click of submit button, following screen will appear.

SML ISUZU - Windows Internet Explorer

http://localhost:4302/PURCHASE/frmAvailableDespatch.aspx

File Edit View Favorites Tools Help

SML ISUZU

Welcome : INDUS PRINTPACK PVT LTD MOHALI (1808-3402) [User Id:VEND10] **PLANT : SML**

AVAILABLE DISPATCHES

New Dispatch Dispatch no. PO No Date From To Pending Posted

Edit	Dispatch No.	PO Number	Dispatch Date	Bill No	Bill Date Post Status	Plant	Print
<input type="button" value="Edit"/>	11000002	910300045	17/02/2010	3434	16/10/2011 PENDING	SML	<input type="button" value="Print"/>

All Copyrights Reserved © SML ISUZU Limited

User can edit the record on click on edit button. If record is correct then click on edit button , following screen will appear with POST button.

Welcome : INDUS PRINTPACK PVT LTD MOHALI (1808-3402) [User Id:VEND10] PLANT : SML

VENDOR DISPATCH DETAIL

Vendor Dispatch No. Purchase Order No. Purchase Order date
 Bill No. Bill Date
 Vehicle Type Truck No.
 Transporter Code Driver Name
 Draft ECN No. Weight
 Cenvat Copy

Sr. No	Part No	Part Description	Rate NDP	Ord Qty	SCH Qty	Qty	UOM
1	XR061052300	MULTIPACK CORRUGATED BOX 25"X16.5"X17"-5 PLY	110.70	900000	400	200	NUMBER
2	XR061052302	MULTIPACK CORRUGATED BOX 17"X17"X13"-5 PLY	87.60	900000	500		NUMBER
3	XR061052304	MULTIPACK CORRUGATED BOX 17"X17"X4.5"-5 PLY	61.50	900000	800		NUMBER
4	XR061052305	MULTIPACK CORRUGATED BOX 13.5"X13.5"X12.5"-5 PLY	61.50	900000	500		NUMBER
5	XR061052306	MULTIPACK CORRUGATED BOX 36"X16.5"X21"-7 PLY	200.40	900000	500		NUMBER
6	XR061052307	MULTIPACK CORRUGATED BOX 21"X21"X9"-5 PLY	114	900000	500	200	NUMBER
7	XR061052308	MULTIPACK CORRUGATED BOX 14.5"X14.5"X8"-5 PLY	53.52	900000	800		NUMBER
8	XR061052309	MULTIPACK CORRUGATED BOX 15.5"X15.5"X11"-5 PLY	69.60	900000	800		NUMBER

All Copyrights Reserved © SML ISUZU Limited

Click on POST Button for posting the particular record.

- Click on Change password option for changing the password.