



# **User Manual**

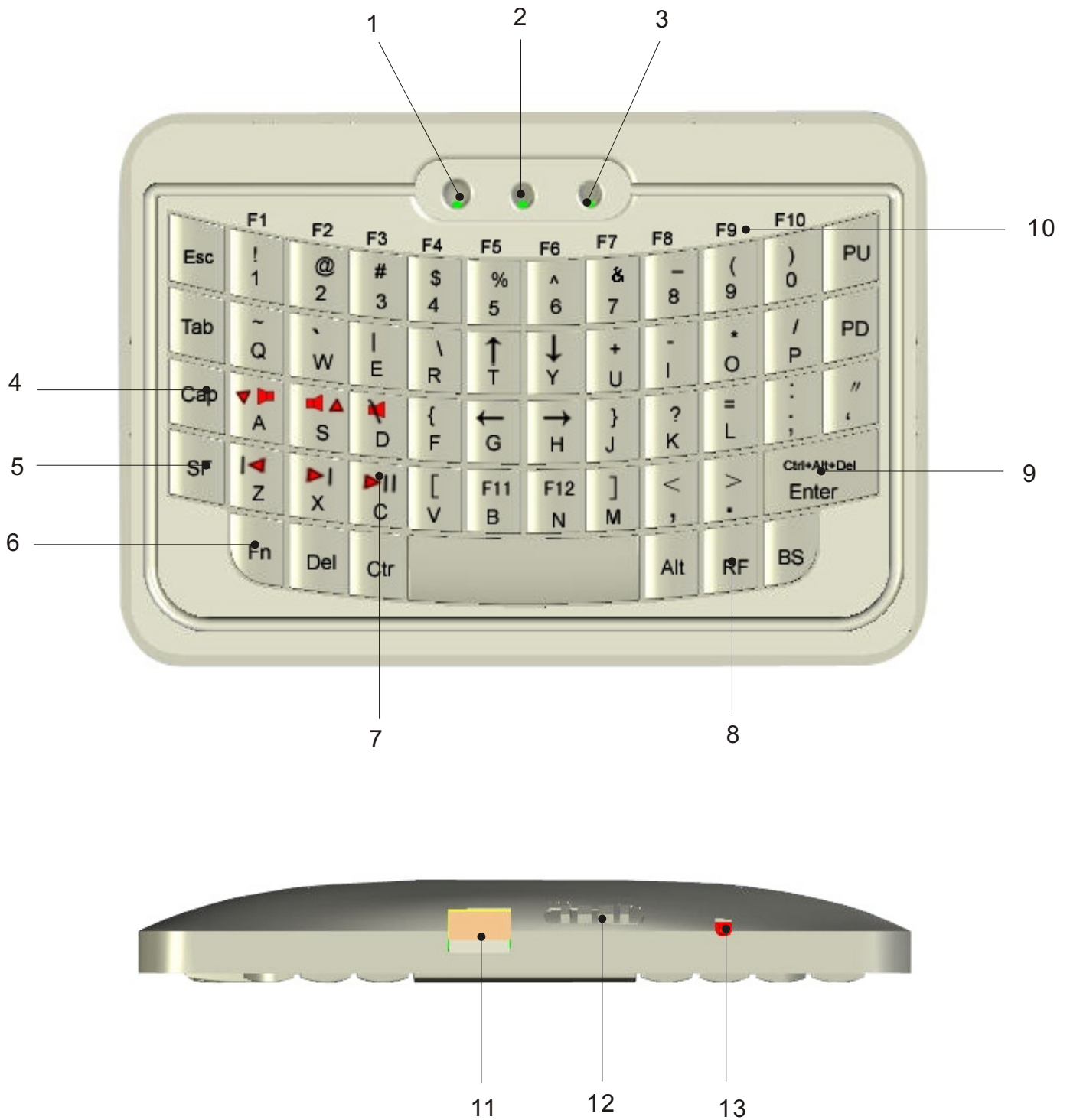
## **Bluetooth Handheld Keyboard**

**Model: KP-810-06BTT**

**UnisenGroup**

[www.unisengroup.com](http://www.unisengroup.com)

# Let us familiar with the Bluetooth Handheld Keyboard



<b>NUMBERED FEATURE</b>	<b>FUNCTION</b>	<b>OPERATION</b>
LED 1	RECHARGER INDICATOR	LIGHT GOES OUT WHEN FULLY CHARGED
LED 2	RF STATUS	BLINKS WHEN TRANSMITTING
LED 3	SHIFT and CAP LOCK INPUT INDICATOR	1. LED3 FLASHES SLOWLY WHEN PRESS CAP LOCK KEY 2. LED3 WITH STEADY ON WHEN PRESS SHIFT KEY
ARROW 4	CAPS LOCK KEY	CAPS LOCK ON/OFF SWITCH KEY, WATCH LED # 3
ARROW 5	THE SF KEY IS FOR THE INPUT SWITCH KEY	MOST KEYS HAVE TWO INPUT OPTIONS. PRESS THIS KEY WHEN YOU WANT TO SWITCH TO THE SECOND KEY MEANING.
ARROW 6	KEY "Fn"	PRESS THIS KEY TOGETHER WITH F1 F2...F12 AND KEY "CTRL+ALT+DEL" TO OPERATE F1, F2...F12 AND KEY "CTRL+ALT+DEL"
ARROW 7	MULTI-MEDIA PLAYER CONTROL KEYS	PRESS KEY "SF", THEN PRESS THESE KEYS TO CONTROL YOUR MULTI-MEDIA PLAYER.
ARROW 8	BACK LIGHT FOR KEYBOARD	TURNS BACK LIGHT ON/OFF BY PRESSING THIS KEY
ARROW 9	KEY Ctrl+Alt+Del"	OPERATE LIKE PRESSING KEY CTRL, ALT, AND DEL TOGETHER
ARROW 10	KEY F1...F12	PRESS KEY Fn TOGETHER WITH THESE KEY TO OPERATE IT
ARROW 11	MINI USB JACK	FOR RECHARGE WITH USB CABLE CONNECTED TO COMPUTER
ARROW 12	POWER SWITCH	TURNS UNIT ON AND OFF
ARROW 13	BLUETOOTH RESET BUTTON	PUSH TO BUILT CONNECTION

Note: The following keys operate identically to the standard keys on a personal computer keyboard: Ctrl; Esc; Del; Enter; BS(Backspace); ↑; ↓; ←; →; Alt;

What is Bluetooth Handheld Keyboard and what is it for?

Bluetooth Handheld Keyboard is the smallest Bluetooth Keyboard in the world for the moment, with built-in Bluetooth Device, Bluetooth Handheld Keyboard provides wireless short range communication with other Bluetooth device instead of physical cable connection that traditionally link electronic devices.

Bluetooth Handheld Keyboard provides a so much convenient and capable tool for iPad , smart mobile phone and tablet PC.

### **What's in your Package?**

In the package with Bluetooth Handheld Keyboard you will find a USB cable for charging the Bluetooth Handheld Keyboard and this manual.

### **Features and specifications:**

- Wireless connection with your iPad, smart mobile phone and tablet PC with distance about 10M.
- Smart and portable size: 55mm x 80mm x 10mm
- Backlit keyboard for the convenient operation in darkened room
- Bluetooth standard: Bluetooth V2.0; HID V1.0
- QWERTY keyboard
- Weight: 30g

### **Starting with Bluetooth Handheld Keyboard:**

**1. Pairing and establishing connection.** Let's take Microsoft Bluetooth Software as an example to describe Bluetooth Search, Pairing and Connection, other Bluetooth software please refer to its own user manual.

1.1 Turn on unit by moving the power switch to ON, (see arrow 15), wait about 2 seconds, backlit will light on and then go out then you will see LED2 flash, that means your unit is trying to build connection with other Bluetooth device. if you see LED2 flash one time and then go out, this is normal, you can push Bluetooth Reset Button indicated by arrow 16 to re-build connection.

1.2 Click "Start", "**Control Panel**" (make sure you're in Classic View), and then double-click Bluetooth Devices.

1.3, Click "**Add**".

1.4, In the Add Bluetooth Device Wizard, select the "**My device is set up and ready to be found check box**", and then click "**Next**".


1.5, After icon of "**Bluetooth iPazzPort**" appear, click "**Bluetooth iPazzPort**", and then click "**Next**".

1.6, When the wizard asks you which passkey you want to use, click "**Choose a passkey for me**". Then click "**Next**".

1.7 After you are prompted to enter your passkey, please type the passkey on Bluetooth Handheld Keyboard, and then press Enter. You also can choose no passkey to go to next step.

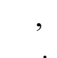
1.8, In the final page of the wizard, click Finish, and then click OK. Bluetooth Handheld Keyboard should now be successfully paired with your PC and ready to use.

1.9 LED2 will go out when connection is established successfully

2. Arrow 5 points to the Input Switch Key 


When this key is pressed LED 3 will light up. This LED will stay on until this key is pressed again. That means while this light is on any key you press will use its secondary input rather than its primary input. For example the key Q is normally "Q" or "q", but when you press the SF key it becomes the number "~". When you have selected the Input Switch Key LED 3 will light up with a steady on. When you are in normal mode LED3 will be turned off.

3. Arrow 4 points to Cap lock key --switch between upper-case and lower-case input mode:

If you are in lower-case input mode, press key  , This way you can turn to upper-case input mode , LED 3 will flash slowly, In order to return to lower-case input mode, press the key again after you completed your upper-case input, the LED 3 goes out.

4. Recharge your Bluetooth Handheld Keyboard: 

Bluetooth Handheld Keyboard is equipped with a rechargeable battery and USB cable, plug mini USB into mini USB jack on the Bluetooth Handheld Keyboard and another end to your PC USB port, it means charging when LED1 light up. LED1 will go out when it is fully recharged, During charging, LED 1 will light up with a steady on.

5. Active the backlit: If you wish to operate this Bluetooth Handheld Keyboard in a darkened room then you will want to use the Backlight keyboard feature. In order to activate the Backlit feature please press  . Indicated by arrow 10. Press this key again, backlit will go out.

6. Arrow 6 points to the Fn key.

In order to bring users more convenience, the Bluetooth Handheld Keyboard also provides F1, F2, F3...F12 which operate like those keys on the standard keyboard. Please press Key Fn together with the key you want to operate them, but if you only press FX on the Wireless Keyboard and Laser Pointer, that will make no sense.

7. Arrow 11 points to Ctrl+Alt+Del key

As we know, in many occasions we need to use keys: Ctrl+Alt+Del in standard keyboard when operate computer, such as restart system, lock users, terminate applications.... But now with Bluetooth Handheld Keyboard you only press Fn together with "Ctrl+Alt+Del" to complete your mission.

8. Arrow 7 points to multi-media player control key

in order to active these keys, you only need press key SF to shift to the secondary input, LED3 will light with steady on, then you can use these keys to control your multi-media player.

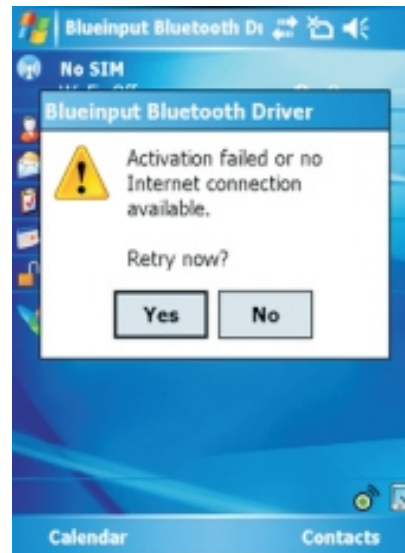
## Connect to mobile

### Microsoft Windows Mobile OS

Note:

Instructions below are for mobiles running WM6.0 and earlier OS, For WM6.1 and later OS, just use the mobile built-in Bluetooth to connect the Bluetooth Handheld Keyboard directly.

1. Copy the driver to your mobile device: insert driver CD and locate "Windows Mobile"==> "Windowsmobile.cab" then copy this file to your mobile device
2. Locate the CAB file and run the windowsmobile.cab file to start the installation on your mobile device. This way the Bluetooth Handheld Keyboard will install in your device automatically. At the end of the installation, the setup program will require a reset.
3. The first time you run the Bluetooth Keyboard Driver on your Windows Mobile Device you will see a prompt to activate the software. Then press "YES" to use this software(make sure your device is connected to Internet)



4. Pair your windows mobiles with the Bluetooth Handheld Keyboard. After the software is installed successfully on your mobile device, you need to pair it with the Bluetooth Handheld Keyboard.

Make sure your mobile is in pairing mode,

open the Bluetooth on your mobile device, then click "Add new"

select the Bluetooth Keyboard and click "Next"

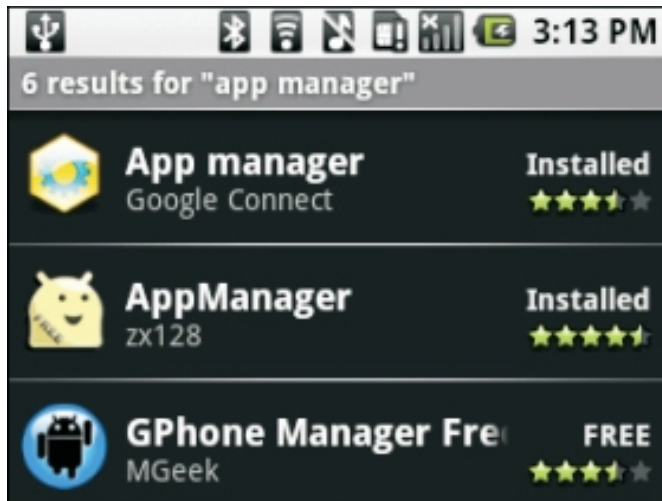
when prompt for passkey, leave it blank and click "Next". (You also can enter 4 number as a passcode)

select "Input Device" and click finish.

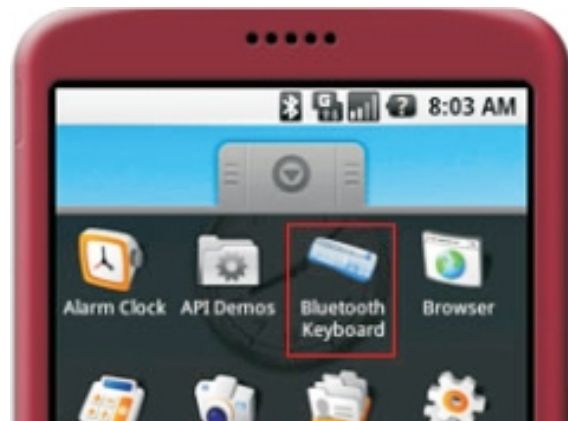
Go to software settings panel and click "connect"

## Google Android OS

1. Software installation: locate the folder "Android" => "Android.apk" and then copy this file to your mobile device from Driver CD on your computer.
2. open your mobile device, then open "market" and install the "APPManager" software or any other Android management software.
3. open the APPmanager softawre and click the menu button



4. Click install from SD option
5. Run "Android.apk".
6. The first time you run the Bluetooth Keyboard Driver on your Android device, you will see a prompt to activate the software. If you press cancel or if the internet is not available, activation will fail and you wo'nt be able to use this software.
7. After the bluetooth keyboard driver is installed and you need to pair the keyboard with the Android device.
  - >Make sure your bluetooth keyboard is in pairing mode,
  - >slide your Android device's menu arrow and open the menu,
  - >find the bluetooth keyboard icon and click it.



>Then click “search and connect”, the software will automatically finds the bluetooth keyboard and build the connection, then you will see your bluetooth keyboard’s name at the bottom. Then you can use your bluetooth keyboard now.

Re-build connection: if your device lost connection with your keyboard, message saying: keyboard disconnected will display on the bottom.you can re-build the connection by pushing the bluetooth reset button (arrow 13)

## Nokia Symbian OS

- 1.Connect your device to the computer and open the file “Nokia Wireless Keyboard Application” and chose your device model or operating system version, copy the \*.sis file to your device.
2. In your Nokia Symbian Mobile Device, find the file \*.sis copied and press button “ok” to install the software
3. Run the installed application and search the bluetooth device.



4. After paired and connected, you will have to set the keyboard layout, if the layout is incorrect, you keyboard may not function as expected.


## Linux OS

There are several Linux distributions available. This guide is designed for Ubuntu, but can easily adapted for other versions. Your computer must be equipped with a Bluetooth module.

1. Make sure that bluetooth device on the computer is actived click the bluetooth icon and select “setup new device”
2. A wizard window will opens and click “forward”
3. After find the bluetooth keyboard, select it and click “forward”
- 4.input the code and press enter on your bluetooth keyboard. A confirmation message will popup click “yes”, then you can use your handheld bluetooth keyboard.



## WEEE Directive & Product Disposal:

 At the end of its serviceable life, this product should not be treated as household or general waste. It should be handed over to the applicable collection point for the recycling of electrical and electronic equipment, or returned to the supplier for disposal.

## Notice to customers:

This symbol on the battery indicates that the battery is to be collected separately.

The following apply only to users in European countries.



- This battery is designed for separate collection at an appropriate collection point.
- Do not dispose of as household waste
- For more information, contact the retailer or local authorities in charge of waste management.

## Caution:

Changes or modifications not expressly approved by the party responsible for compliance could void the user's authority to operate the equipment.

## Compliance statement:

1: This device is verified to comply with Part 15 of the FCC Rules. Operation subject to the following two conditions:

(1) this device may not cause harmful interference, and (2) this device must accept any interference received, including interference that may cause undesired operation.

2: This equipment has been tested and found to comply with the limits for a Class B digital device, pursuant to Part 15 of the FCC Rules. These limits are designed to provide reasonable protection against harmful interference in a residential installation. This equipment generates, uses and can radiate radio frequency energy and, if not installed and used in accordance with the instructions, may cause harmful interference to radio communications.

However, there is no guarantee that interference will not occur in a particular installation. If this equipment does cause harmful interference to radio or television reception, which can be determined by turning the equipment off and on, the user is encouraged to try to correct the interference by one or more of the following measures:

- Reorient or relocate the receiving antenna.
- Increase the separation between the equipment and receiver.
- Connect the equipment into an outlet on a circuit different from that to which the receiver is connected.
- Consult the dealer or an experienced radio/TV technician for help