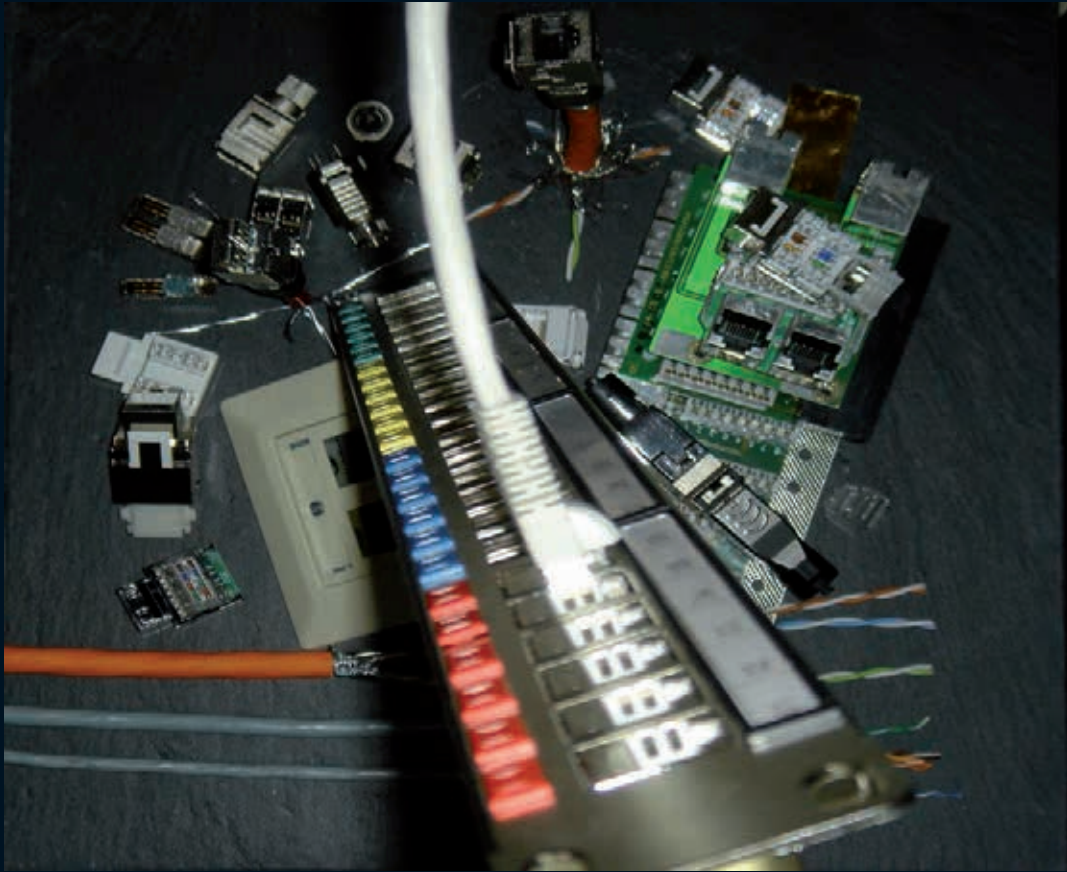


COPPER

*SilverLink*





CONNECTIVITY

# PATCHCORDS



## STANDARD COMPLIANCE

All components of/and the final product are designed and tested to conform the requirements of IEC 61935, EN 60603-7, EN 61076-3 , EN 50288, recommendations of international standards for structured cabling, ISO/IEC 11801 2<sup>nd</sup> Ed., EN 50173-1 2002 and EIA/TIA 568B 2.0/2.1.

## PRODUCTION RANGE

System options	:	unshielded ( <i>UTP</i> ) and shielded ( <i>STP</i> )
Performance ranges	:	Cat.3, Cat5e, Cat6, Cat.6 <sub>A</sub> and Cat.7 & Cat.7 <sub>A</sub> ( <i>shielded only</i> )
Connectors	:	RJ11, RJ12, RJ45 & FX ( <i>Tera</i> )-connector
Cable outer sheaths	:	LSZH, LSZHFR, PVC and PUR
Lengths	:	0.5m, 1m, 1.5m, 2m, 3m, 4m, 5m, 7.5m, 10m, 15m <i>- customized specifications and lengths available on request -</i>

# PATCHCORDS



## PART-NUMBER KEY

Example: **SL - PT - RJ45/RJ45 - C6UTP - LSZH - 2** — Patchcord RJ45/RJ45 Cat.6 unshielded, LSOH outer sheath, 2m

- 1 SilverLink - copper main product range
- 2 Product range: Patchcords
- 3 Connectors: RJ11 / RJ12 / RJ45 / FX - *other connectors available on request*
- 4 Performance: C3 = Cat.3 (16MHz), C5e = Cat.5e (100MHz), C6 = Cat.6 (250MHz), C6a = Cat.6<sub>A</sub> (500MHz),  
C7 = Cat.7 (600MHz), C7a = Cat.7<sub>A</sub> (1000MHz)
- 5 System option: UTP = unshielded, STP = shielded
- 6 Outer sheath: LSZH = low smoke zero halogen, LSZHFR = low smoke zero halogen flame retardent,  
PVC = Polyvinyl Chloride, PUR = Polyurethane
- 7 Length in meters

# TRUNK CABLES



## STANDARD COMPLIANCE

All components of/and the final product are designed and tested to conform the requirements of the international structured cabling standards ISO/IEC 11801, EN 50/173 and EIA/TIA 568, as well as the specific norms of ISO/IEC, EN, EIA/TIA, ITU-T, Bellcore/Telcordia, ANSI, IEEE and the relevant national regulations.

## PRODUCTION RANGE

Connectors	:	keystone jacks ( <i>see pages 190 - 191</i> ), <i>RJ45 plugs</i>
Shielding	:	unshielded ( <i>UTP</i> ) & shielded ( <i>STP</i> )
Cable types	:	all cable types ( <i>see pages 220 - 221</i> )
Cable outer sheaths	:	PVC, PE, PUR & LSZH-compounds
Tubes	:	PVC or LSZH tube in various dimensions & colors

— Trunk cables are also available in fiber optic version; see „*LightLine*“ section. —

# TRUNK CABLES



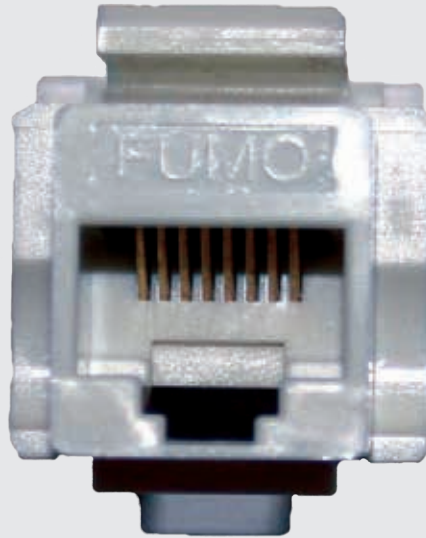
## PART-NUMBER KEY

*Example:* **SL - TRUNK - CA.... - 12 - CT.... - 30 - EYE** — *Trunk cable, 12 simplextrunks, 30 meters, with pulling-eye*

**1** **2** **3** **4** **5** **6** **7**

- 1** SilverLink - copper main product range
- 2** Trunk cable
- 3** Cable types: part no. see *pages 220 - 221*
- 4** Trunk count
- 5** Connector types: part no. see *pages 190 - 191*
- 6** Cable length in meters
- 7** Pulling-eye

# KEYSTONE-JACKS



## STANDARD COMPLIANCE

All components of/and the final product are designed and tested to conform the requirements of IEC 61935, EN 60603-7, recommendations of international standards for structured cabling, ISO/IEC 11801 2<sup>nd</sup> Ed., EN 50173-1 2002 and EIA/TIA 568B 2.0/2.1.

## PRODUCTION RANGE

System options	:	unshielded ( <i>UTP</i> ) and shielded ( <i>STP</i> )
Performance ranges	:	Cat5e, Cat6, Cat.6 <sub>A</sub> and Cat.7 & Cat.7 <sub>A</sub> ( <i>shielded only</i> )
Termination	:	tool-less or punch-down tools
Body	:	plastic compound or metal

# KEYSTONE-JACKS



## PART-NUMBERS

SL-CT-UTPRJ11KEY-C3  
 SL-CT-UTPRJ11KEY-C3  
 SL-CT-UTPRJ45KEY-C5e  
 SL-CT-UTPRJ45TLKEY-C5e  
 SL-CT-UTPRJ45KEY-C6  
 SL-CT-UTPRJ45TLKEY-C6  
 SL-CT-UTPRJ45KEY-C6a  
 SL-CT-UTPRJ45TLKEY-C6a  
 SL-CT-STPRJ45KEY-C5e  
 SL-CT-STPRJ45TLKEY-C5e  
 SL-CT-STPRJ45KEY-C6  
 SL-CT-STPRJ45TLKEY-C6  
 SL-CT-STPRJ45KEY-C6a  
 SL-CT-STPRJ45TLKEY-C6a  
 SL-CT-FX600-C7  
 SL-CT-FX1000-C7a

*RJ11 Keystone-Jack, unshielded Cat.3 16MHz*  
*RJ11 Keystone-Jack, unshielded Cat.3 16MHz, tool-less*  
*RJ45 Keystone-Jack, unshielded Cat.5e 100MHz*  
*RJ45 Keystone-Jack, unshielded Cat.5e 100MHz, tool-less*  
*RJ45 Keystone-Jack, unshielded Cat.6 250MHz*  
*RJ45 Keystone-Jack, unshielded Cat.6 250MHz, tool-less*  
*RJ45 Keystone-Jack, unshielded Cat.6<sub>A</sub> 500MHz*  
*RJ45 Keystone-Jack, unshielded Cat.6<sub>A</sub> 500MHz*  
*RJ45 Keystone-Jack, shielded Cat.5e 100MHz*  
*RJ45 Keystone-Jack, shielded Cat.5e 100MHz, tool-less*  
*RJ45 Keystone-Jack, shielded Cat.6 250MHz*  
*RJ45 Keystone-Jack, shielded Cat.6 250MHz, tool-less*  
*RJ45 Keystone-Jack, shielded Cat.6<sub>A</sub> 500MHz*  
*RJ45 Keystone-Jack, shielded Cat.6<sub>A</sub> 500MHz*  
*Keystone-Jack, shielded Cat.7 600MHz*  
*Tera Keystone-Jack, shielded Cat.7<sub>A</sub> 1000MHz*



# OUTLETS



## STANDARD COMPLIANCE

All components of/and the final product are designed and tested to conform the requirements of IEC 61935, EN 60603-7, recommendations of international standards for structured cabling, ISO/IEC 11801 2<sup>nd</sup> Ed., EN 50173-1 2002 and EIA/TIA 568B 2.0/2.1.

## PRODUCTION RANGE

System options	:	unshielded ( <i>UTP</i> ) and shielded ( <i>STP</i> )
Types	:	wall-mount, built-in, floor-mount
Connectors	:	all types ( <i>see keystone-jacks section</i> )
Styles	:	UK, US, French, Italian, German and customized

# OUTLETS



## PART-NUMBER KEY

Example: **SL - OUT/US/BI-2RJ45emp** — *Outlet, US-style, built-in version, keystone-type, 2x RJ45, empty*

1 2 3 4 5 6 7

- 1 SilverLink - copper main product range
- 2 Outlet/Faceplate
- 3 Style: UK = Great Britain, US = American, F = French, IT = Italian, G = German, C = customized
- 4 Version: WM = wall-mounting, BI = built-in, FM = floor-mounting
- 5 Ports
- 6 Type: RJ45 or FX
- 7 Assembling: emp = empty, eq = equipped with keystone-jacks

# PATCHPANELS



## STANDARD COMPLIANCE

All components of/and the final product are designed and tested to conform the requirements of IEC 61935, EN 60603-7, recommendations of international standards for structured cabling, ISO/IEC 11801 2<sup>nd</sup> Ed., EN 50173-1 2002 and EIA/TIA 568B 2.0/2.1.

## PRODUCTION RANGE

- System options : unshielded (*UTP*) and shielded (*STP*)
- Performance ranges : Cat5e, Cat6, Cat.6<sub>A</sub>, Cat.7<sub>A</sub> (*shielded only*)
- Styles : fixed, modular and keystone in various height units
- Colors : black, grey and metal (*other colors available on request*)

# PATCHPANELS



## PART-NUMBER KEY

Example: **SL - PP/1U/19-24RJ45KEYeq-C6UTP** — 19" Patchpanel 24-port 1U, RJ45 Keystone-Jacks Cat.6 unshielded, equipped  
[1] [2] [3] [4] [5] [6] [7] [8] [9]

- [1] SilverLink - copper main product range
- [2] Patchpanel
- [3] Height units
- [4] Width: 10" and 19"
- [5] Ports: 6, 12, 16, 24, 32 & 48 RJ45 or FX
- [6] Version: KEY = keystone-jacks, FIX = PCB (*fixed jacks*), MOD = modular, LM = label marking
- [7] Assembling: emp = empty, eq = equipped with keystone-jacks
- [8] Performance: C3 = 16MHz, C5e = 100MHz, C6 = 250MHz, C6a = 500MHz & C7a = 1000MHz
- [9] System options: UTP = unshielded, STP = shielded

# 110 CROSS CONNECT



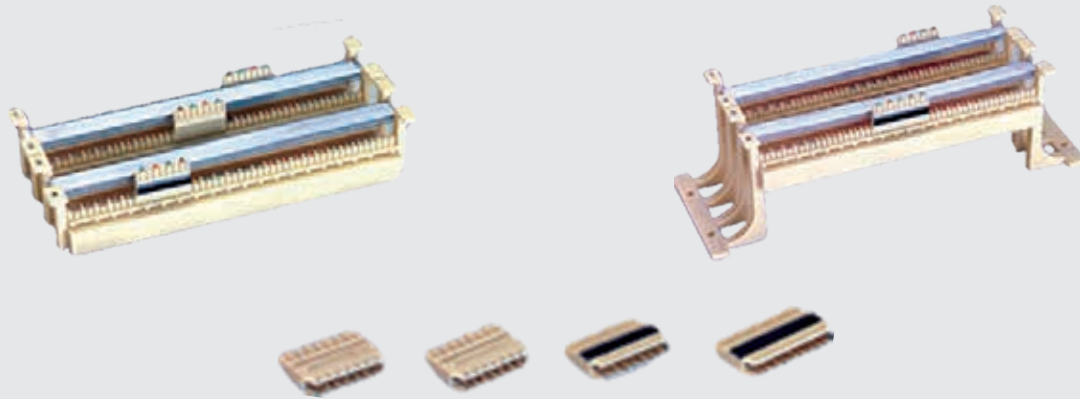
## APPLICATION

Fumo's cross connect solution offers a reliable, economical high-density system, supporting applications from voice to high-speed data. All components and system variations meet or exceed the relevant ISO/IEC and EIA/TIA specifications, and are compatible with the industry's standard impact tools.

## PRODUCTION RANGE

System option	:	unshielded ( <i>UTP</i> )
Performance ranges	:	Cat3, Cat5e & Cat6,
Ranges	:	Wiring blocks, connecting blocks, cable management, patchcords
Versions	:	Wiring block with stands, wiring block w/o stands 19" mounted panel

# 110 CROSS CONNECT



## PART-NUMBER KEY

Example: **SL - CC-WB/STD-C3-50** — Cross Connect wiring block with stands, 50-pairs, Cat3

**1** **2** **3** **4** **5** **6**

- 1** SilverLink - copper main product range
- 2** Cross Connect
- 3** Range: WB = wiring block, CB = connecting block, CMP = cable management panel, PT = patchcord  
WMF = wall-mounting frame
- 4** Type: STD = with stands, blank = w/o stands, 19 = 19" mounting, 110/1 = 110 patch plug 1-pair,  
110/2 = 110 patch plug 2-pairs, 110/4 = 110 patch plug 4-pairs, RJ11, RJ12 & RJ45
- 5** Performance: C3 = 16MHz, C5e = 100MHz, C6 = 250MHz
- 6** Pairs/length: For connecting items pair count and for patchcords length in meters

TEST EQUIPMENT

*SilverLink*



***IDEAL INDUSTRIES***

TEST EQUIPMENT



# CABLE CERTIFIER - LANTEK® II



## APPLICATION

Superior performance, revolutionary fiber options and an outstanding value mark LanTEK® II the ultimate cable certification platform. Covering the full range of test capabilities needed today, LanTEK® II comes in three ETL-verified models: 350 MHz - Class E/Cat 6, 500 MHz - Class E<sub>A</sub>/Cat 6<sub>A</sub> and 1000 MHz - Class F<sub>A</sub>/Cat 7<sub>A</sub> as a future-proof investment.

Models 350MHz and 500MHz are fully upgradable to 1000MHz at very reasonable costs.

Productivity on the job is granted by 11-seconds Class D/Cat 5e and 14-seconds Class E/Cat 6 autotests, including full graphical data storage. Costs and efficiency are further improved by a patented universal adapter system, which certifies most cabling with off-the-shelf patch cords. This unique feature replaces the requirements of cost-intensive and proprietary permanent link adapters.

The LanTEK® II series also offers ultimate versatility with options for Alien Crosstalk testing, certification of TERA, GG45 and EC7 Class F/F<sub>A</sub> / Category 7/7<sub>A</sub>, plus M12 Industrial Ethernet, and coaxial test adapters.

Optional FiberTEK® FDX modules provide the world's only dual wavelength, bi-directional test certification for multimode, singlemode and Gigabit applications.

# CABLE CERTIFIER - LANTEK® II

## PART-NUMBERS

SL-IDEAL-LT2-350

*EIA/TIA Cat. 6, ISO Class E certifier w/ Cat. 6 adapters*

SL-IDEAL-LT2-500

*EIA/TIA Cat. 6<sub>A</sub>, ISO Class E<sub>A</sub> certifier w/ Cat. 6<sub>A</sub> adapters*

SL-IDEAL-LT2-1000

*EIA/TIA Cat. 7<sub>A</sub>, ISO Class F/F<sub>A</sub> certifier w/ Cat. 6<sub>A</sub> adapters*

*Contents: LanTEK® II display and remote handset, two smart lithium ion batteries, two 110-240V power adapters with US/EU/UK plugs, lockable semi-rigid carrying case, Cat. 6<sub>A</sub> F/FTP patch cords, USB cable, IDEAL DataCENTER data management and reporting software, two headsets, hanging straps, calibration and ETL accuracy certificate, quick reference guide, user manual on CD.*

## Accessories

SL-IDEAL-LT2-GB10KIT

*10 Gigabit Alien Crosstalk testing kit*

SL-IDEAL-LT2-C7FX

*Cat.7/ISO-F TERA testing kit*

SL-IDEAL-LT2-C7GG

*Cat.7/ISO-F NEXANS GG-45 testing kit*

SL-IDEAL-LT2-COAX

*Coax testing kit*

SL-IDEAL-LT2-SCC

*Small carrying case*

SL-IDEAL-LT2-LCC

*Large carrying case*

SL-IDEAL-LT2-AD/C6

*Category 6/Class E universal channel/permanent link adapter*

SL-IDEAL-LT2-AD/C6a

*Category 6<sub>A</sub>/Class E<sub>A</sub> universal channel/permanent link adapter*

SL-IDEAL-LT2-PT/C6a

*Replacement category 6<sub>A</sub> F/FTP patchcord*

SL-IDEAL-LT2-PS

*Replacement power supply*

SL-IDEAL-LT2-TS

*Replacement talking set*

SL-IDEAL-LT2-USB

*USB cable*

SL-IDEAL-LT2-BAT/LI

*Lithium Ion battery*

# CABLE PERFORMANCE TESTER - SIGNALTEK™



## APPLICATION

SIGNALTEK™ provides a technically innovative method to test and document the performance of voice-, data-, and video-applications for network installers and -technicians.

## FEATURES

- Gigabit performance qualification test according to IEEE 802.3 standards
- Data monitoring to detect intermittent network problems
- Intuitive graphical user interface for fast and easy operation
- Performs Gigabit Ethernet link establishment test in 10 seconds
- Internal and USB data storage to store 20,000 tests internally or unlimited on USB drive
- Prints easy-to-read pass/fail qualification reports

## PART-NUMBER

SL-IDEAL-SIGNALTEK

*SIGNALTEK™ Near-end and remote-end handset, incl. black nylon carrying case, 2x 30.5cm RJ11 silver satin cables, 2x 61cm RJ45-to-F patchcords, 2x 30.5cm RJ45 shielded patchcords, 2x 30.5cm RJ45-twin alligator clip cords, 8x AA alkaline batteries, USB cable, quickstart guide, CD-ROM user manual*

# GIGABIT ETHERNET ANALYZER



## APPLICATION

High-performance testing and trouble-shooting tool for Ethernet networks up to 1Gbit/s.

## FEATURES

- Continuity tests, traffic generation and statistics for physical layer installation (copper and fiber)
- RFC 2544, IP ping and trace route for Ethernet and IP layers
- SLA certification, including traffic load, bandwidth, service integrity and latency
- Throughput, link utilization and MAC errored frames testing for accurate performance statistics
- Trace route for network path tracing
- IP ping to locate bad routing configurations
- Copper tests: cable length, pair and polarity swap, BERT
- Fiber tests: continuity check, BERT, optical power

## PART-NUMBER

SL-IDEAL-GbEnet

*Gigabit Ethernet Analyzer, including Pocket PC, user guide, software CD-ROM, main power supply, 2x short haul 850nm optic modules with cables, RJ-45 Ethernet cable, serial cable, carrying case*

# INDUSTRIAL TESTER - IENET™ PRO



## APPLICATION

The IENet™ PRO features a unique easy-to-use cable test for 2-pairs and 4-pairs Industrial Ethernet cabling. With shielded 2-pairs, M12 and RJ-45 ports, the IENet™ PRO is compatible to most Industrial Ethernet cabling. Test results are displayed in PROFINET® Industrial Ethernet required format.

## FEATURES

- selection between voice, 2- & 4-pairs data, and coax testing features (voice and video/security tests via optional adaptors)
- tests for opens, shorts, miswirings, reversals, split-pairs (user selectable) and length
- indicates correct wiremap to T568A/B standards for shielded and unshielded cabling
- easy-to-read LCD display with “PASS” or “Miswire” indicator for each test
- identifies presence of voltage on cables
- tone generator supports four different tones making fault isolation easier
- integrated remote unit to make storage and carrying easier
- can support additional optional remotes making it efficient for one person testing
- blinks network link LED for visual cable tracing
- numerical indication for UTP “No Shield” and STP “Shield” to comply with industrial ethernet PROFINET® requirements

# INDUSTRIAL TESTER - IENET™ PRO

## PART-NUMBERS

SL-IDEAL-IEN/SR  
SL-IDEAL-IEN/8R

*IENet™ PRO with single remote*  
*IENet™ Pro with eight remotes*

### Accessories

SL-IDEAL-IEN-8CTK  
SL-IDEAL-IEN-8RK  
SL-IDEAL-IEN/AT-RJ45/RJ11  
SL-IDEAL-IEN/AT-RJ45/F  
SL-IDEAL-IEN/AT-F/BNC

*Eight coax terminator kit*  
*IENet™ Pro eight remote kit (ID 1-8)*  
*RJ-45 to RJ-11 jack adaptor (2/card)*  
*RJ-45 to F-connector adaptor (2/card)*  
*F to BNC adaptor kit*

# CABLE TESTER - LINKMASTER™



## APPLICATION

The LinkMaster™ is designed to test wiring configurations on twisted-pair UTP/STP cables. Checks for shorts, miswirings, reversals and split pairs. Debug feature, automatic shut-off and low battery LED indication.

## FEATURES

- Tests wiring configuration on UTP and STP
- Checks shorts, miswiring, reversals and split-pairs
- Debug feature, automatic shut-off and low battery LED indicator
- Main unit and remote allow single person testing
- Designed to test installed twisted pair wiring
- Tests unshielded & shielded modular plugs

## PART-NUMBER

SL-IDEAL-LM

*LinkMaster™ twisted-pair wiring tester*

# CABLE TESTER VDV MULTIMEDIA



## APPLICATION

The VDV MultiMedia Cable Tester is an easy-to-use cable testing and verification device that can quickly test all wiring requirements found throughout today's residential and commercial environments.

## FEATURES

- Easy-to-use push button to select between voice-, data-, and video-/security-testing modes
- Tests opens, shorts, miswirings, reversals and split-pairs
- Indicates correct wiremap to T568A/B standards
- Easy-to-read LCD display with "PASS" or "Miswire" indicator for each test
- Identifies voltage on cables
- Tone generator supports 4 different tones, making fault isolation easier
- Integrated remote unit to make storage and carrying easier
- Can support additional optional remotes, making it efficient for single person testing

## PART-NUMBER

SL-IDEAL-VDV

*VDV MultiMedia cable testing kit, the tester, built-in remote, satin RJ11 patchcord, satin RJ45 patchcord, user manual - carrying case available on request*



# TOOL KITS

## PART-NUMBERS

SL-TOOL-LAN/K1

*installation tool kit LAN-Kit1, including*  
*1x Punchmaster™ II with LSA+ blade*  
*1x Data T®-cutter for UTP-/STP-/coax-cables*  
*1x stripping tool for or UTP-/STP-/coax-cables*  
*1x PocketPal™ belt pouch*



SL-TOOL-LAN/K2

*installation tool kit LAN-Kit2, including*  
*1x LSA+ termination tool with integrated*  
*screw driver and pull-out hook*  
*1x Data T®-cutter for UTP-/STP-/coax-cables*  
*1x stripping tool for or UTP-/STP-/coax-cables*  
*1x PocketPal™ belt pouch*



SL-TOOL-TSK

*technician service tool kit, including*  
*1x Punchmaster™ II with 110er blade*  
*1x 66er blade*  
*1x electrician scissor*  
*1x pull-out hook*  
*1x multi-screw driver*  
*1x stripping tool for or UTP-/STP-/coax-cables*  
*1x nylon belt pouch*



**- customized tool kits available on request -**

# TOOLS

## PART-NUMBERS

SL-TOOL-PMII	<i>Punchmaster™ II without blades</i>
SL-TOOL-PMII/110	<i>Punchmaster™ II with 110er blades</i>
SL-TOOL-PMII/11066	<i>Punchmaster™ II with 110er + 66er blades</i>
SL-TOOL-PT/LSA+	<i>Punchmaster™ II with LSA+ blades</i>
SL-TOOL-PT/KR	<i>Punchmaster™ II with Krone® blades</i>
SL-TOOL-PT/BIX	<i>Punchmaster™ II with BIX® blades</i>
SL-TOOL-CC/USC	<i>Data T®-cutter for UTP-/STP-/coax-cables</i>
SL-TOOL-CC/USC	<i>Data T®-cutter for coax-cable RG59/6</i>
SL-TOOL-ST1	<i>stripping tool for FO- &amp; RG174/-187 coax-cables, Ø up to 3,2mm</i>
SL-TOOL-ST2	<i>stripping tool for FO- &amp; RG58/CB/mini-coax-cables, Ø from 3,2mm up to 5,56mm</i>
SL-TOOL-ST3	<i>stripping tool for FO- &amp; RG11/-8-coax-cables, Ø from 6,4mm up to 14,3mm</i>
SL-TOOL-ST4	<i>stripping tool for UTP-/STP-/RG59-coax-cables, Ø from 4,8mm up to 8mm</i>
SL-TOOL-BLADES/I	<i>blades for stripping tools ST1, ST2 and ST4</i>
SL-TOOL-BLADES/II	<i>blades for stripping tool ST3</i>
SL-TOOL-SC	<i>multi-screw driver</i>
SL-TOOL-SHEAR	<i>electrician scissor</i>

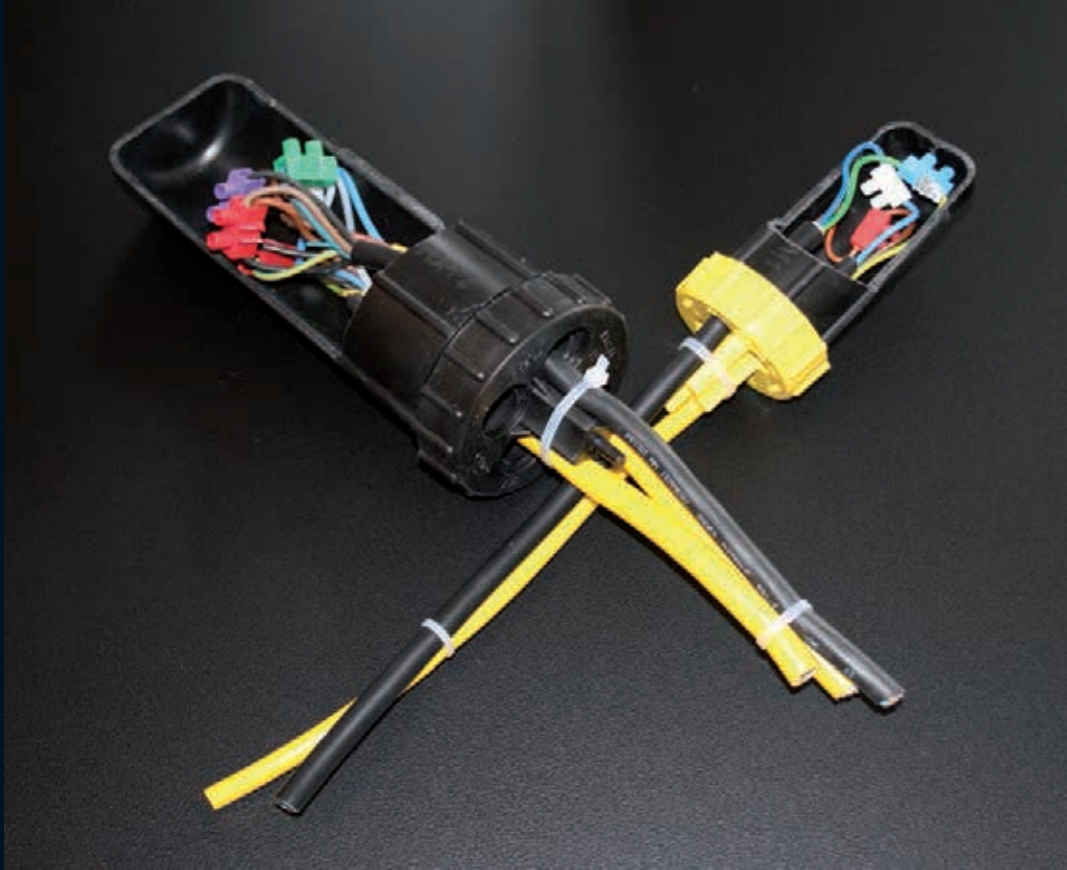


- further tools available on request -

CLOSURES

*SilverLink*





CLOSURES

# SQUARE CLOSURES



## APPLICATION

Fumo's closures are developed to avoid the problem of the earlier complicated and dangerous heat shrinking system. They are increasingly acknowledged and successful, due to exceeding the expectations of both, technology and economy. All closures are re-openable and -usable for in- and outdoor applications, and do match all common cable types.

## PRODUCT RANGE

Cable entries	: 6 ( <i>single cable grommet</i> ), 12 ( <i>duplex cable grommet</i> )
Cable Ø	: up to 71mm ( <i>single cable grommet</i> ), up to 36mm ( <i>duplex cable grommet</i> )
Cable types	: energy & multipair cables
Protection grade	: IP68 ( <i>absolutely sealed</i> )
Resistance	: against chemicals, ultra-violet rays, acids
Installation	: direct burial, wall- / pole-mount, between aerial cables, man- / hand-holes
Materials	: body = Polypropylene, rubber caps = Polyolefine, screws = stainless steel Niro A2 - entirely non-corrosive

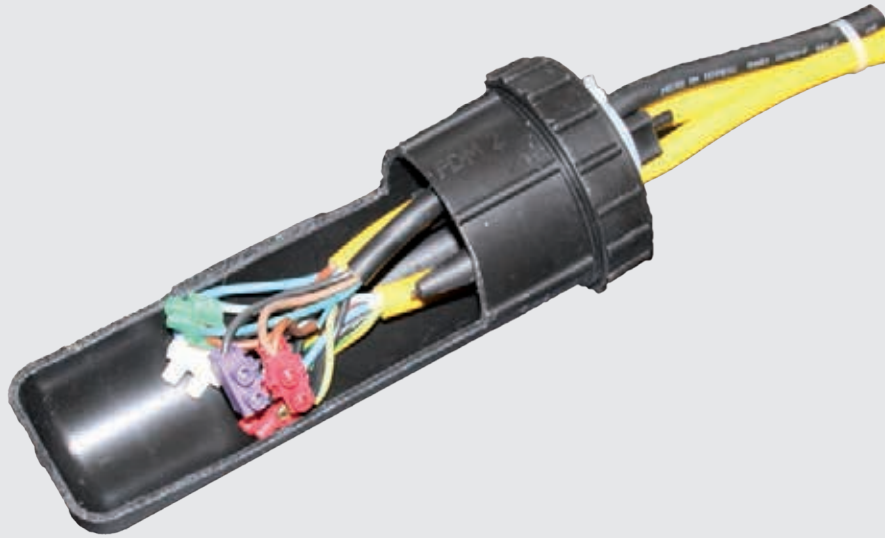
# SQUARE CLOSURES

## PART-NUMBERS

SL-CLOSURE-OUT23/J	<i>outdoor joint version, single grommet: 2 cable entries max. cable Ø23mm or duplex grommet: 4 cable entries max. cable Ø13mm</i>
SL-CLOSURE-OUT23/D	<i>outdoor distribution version, single grommet: 4 cable entries max. cable Ø23mm or duplex grommet: 8 cable entries max. cable Ø13mm</i>
SL-CLOSURE-OUT42/J	<i>outdoor joint version, single grommet: 2 cable entries max. cable Ø42mm or duplex grommet: 4 cable entries, max. cable Ø23mm</i>
SL-CLOSURE-OUT42/D	<i>outdoor distribution version, single grommet: 4 cable entries max. cable Ø42mm or duplex grommet: 8 cable entries max. cable Ø23mm</i>
SL-CLOSURE-OUT71/J	<i>outdoor joint version, single grommet: 2 cable entries max. cable Ø71mm or duplex grommet: 4 cable entries, max. cable Ø36mm</i>
SL-CLOSURE-OUT71/D	<i>outdoor joint version, single grommet: 2 cable entries max. cable Ø71mm + 4 cable entries max. cable Ø42mm or duplex grommet: 4 cable entries max. cable Ø36mm + 8 cable entries max. cable Ø23mm</i>

- *customized solutions available on request* -

# DOMES CLOSURES



## APPLICATION

Fumo's closures are developed to avoid the problem of the earlier complicated and dangerous heat shrinking system. They are increasingly acknowledged and successful, due to exceeding the expectations of both, technology and economy. All closures are re-openable and -usable for in- and outdoor applications, and do match all common cable types.

## PRODUCT RANGE

Cable entries	: up to 8 cables (also uncut cables)
Cable Ø	: up to 42mm
Cable types	: energy & multipair cables
Protection grade	: IP68 ( <i>absolutely sealed</i> )
Resistance	: against chemicals, ultra-violet rays, acids
Installation	: direct burial, wall- / pole-mount, between aerial cables, man- / hand-holes
Materials	: body = Polypropylene, rubber caps = Polyolefine, screws = stainless steel Niro A2 - entirely non-corrosives

# DOMES CLOSURES

## PART-NUMBERS

SL-CLOSURE-DOME1	<i>outdoor dome version, 4 cable entries, cable Ø5mm up to 14mm</i>
SL-CLOSURE-DOME2	<i>outdoor dome version, 4 cable entries, cable Ø7mm up to 25mm</i>
SL-CLOSURE-DOME3	<i>outdoor dome version, 1 cable entry for cable Ø10mm up to 42mm + 1 cable entry for cable Ø10mm up to 33mm + 6 cable entries for cable Ø8mm up to 26mm</i>

*- customized solutions available on request -*



COPPER CABLES

*SilverLink*





CABLES

# DATA CABLES



## APPLICATION

All components of/and the final product are designed and tested to conform the requirements of the international structured cabling standards ISO/IEC 11801, EN 50/173 and EIA/TIA 568, as well as the specific norms of ISO/IEC, EN, EIA/TIA, ITU-T, Bellcore/Telcordia, ANSI, IEEE and the relevant national regulations.

## PRODUCTION RANGE

Shieldings	:	unshielded ( <i>UTP</i> ) & shielded ( <i>STP</i> )
Performance ranges	:	Cat5e, Cat6 & Cat.6 <sub>A</sub> Cat7 & Cat.7 <sub>A</sub> ( <i>shielded only</i> )
Sheathing materials	:	PVC, PE, PUR & LSZH-compounds
Packaging	:	305m box, 500m & 1000m drum

# DATA CABLES

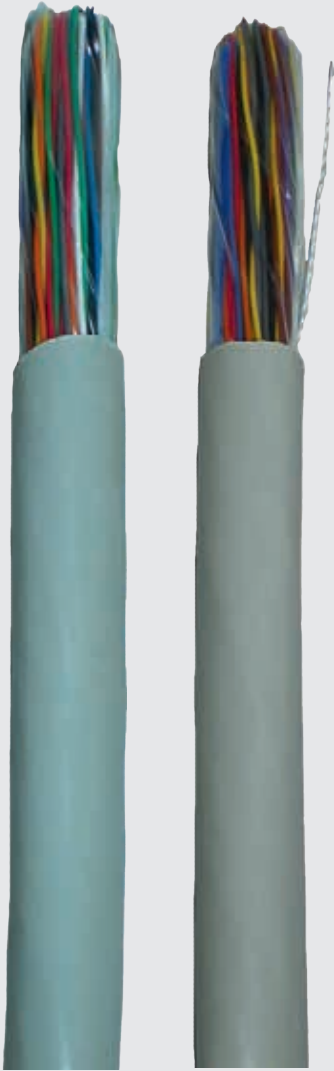
## PART-NUMBER KEY

*Example:* **SL - CA-UTP4x2x23-C6-LSZH** — *unshielded, 4 twisted-pair cable, AWG23, cat.6, LSZH sheath*  
1 2 3 4 5 6 7

- 1 SilverLink - copper main product range
- 2 Cables
- 3 Shielding: UTP (*unshielded*)  
F/UTP, SF/UTP, U/FTP, S/FTP (*shielded versions*)
- 4 Number of pairs
- 5 Wire diameter AWG (*American Wire Gauge*): 22 / 23 / 24 / 26 / 27 & 28
- 6 Performance range: C5e = 100MHz / C6 = 250MHz / C6<sub>a</sub> = 500MHz  
C7 = 600MHz / C7<sub>a</sub> = 1000MHz  
*- dedicated frequencies are mentioned after no. of category; eg. C7/1200 -*
- 7 Sheathing material: PVC / PE / PUR / LSZH & LSZHFR



# TELECOM CABLES



## APPLICATION

All components of/and the final product are designed and tested to conform the requirements of the international structured cabling standards ISO/IEC 11801, EN 50/173 and EIA/TIA 568, as well as the specific norms of ISO/IEC, EN, EIA/TIA, ITU-T, Bellcore/Telcordia, ANSI, IEEE and the relevant national regulations.

## PRODUCTION RANGE

Shieldings	:	unshielded ( <i>UTP</i> ) & shielded ( <i>STP</i> )
Performance ranges	:	up to 16MHz
Sheathing materials	:	PVC, PE, PUR & LSZH-compounds
Packaging	:	500m & 1000m drums

# TELECOM CABLES

## PART-NUMBER KEY

Example: **SL - CA-UTP50x2x0.6-C3-PVC** — *unshielded, 50 twisted-pairs, 0.6mm wireØ, cat.3, PVC*

**1** **2** **3** **4** **5** **6** **7**

- 1** SilverLink - copper main product range
- 2** Cables
- 3** TP = twisted pairs  
U = unshielded  
F = foil screen, S = braid screen, C = steel tape, A = aluminium tape
- 4** Number of pairs - cable construction
- 5** Wire diameter in milimeters
- 6** Performance range: C3 = up to 16MHz or without specification  
*- dedicated frequencies are mentioned after no. of category, eg. C3/16 -*
- 7** Sheathing material: PVC / PE / PUR / LSZH & LSZHFR



# INDUSTRIAL CABLES



## APPLICATION

Fumo offers industrial cable solutions for most extreme conditions, by granting superior electrical and mechanical properties. Many years of international experience in industrial projects are the profound base for reliability and flexibility when it comes to cable solutions in the industrial sector. The range of cables includes approved standardized types, as well as customized solutions for both in- and outdoor applications.

## FEATURES

Insulation materials	: PVC, PE, XLPE, HDPE, PA ( <i>nylon</i> ), FRNC / FRLS & silicon rubber
Armouring	: SWA, SWB, BCu TCu wire braids, corrugated steel ( <i>CS</i> ), alu tapes, aramid- & glass yarns
Chemical protections	: extruded lead sheath and lead-free multilayer constructions
Screens	: individual as well as overall foil, metal tape and/or braids
Conductors	: single and triple aluminium or copper ( <i>power</i> ) solid, stranded or flexible cores
Cores	: thermo-couple extension and compensating
Cabling elements	: cores, pairs, triples and quads

# INDUSTRIAL CABLES

- Control cables
- Earthing cables
- Elevator cables
- Energy cables
- Fieldbus cables
- Fire-control cables
- Fire-resistant cables
- Instrumentation cables
- Pilot cables
- Plant- and Petrochem cables
- Power cables
- Rubber cables
- Signal cables
- Thermo-couple cables



**ENTIRELY CUSTOMIZED CABLES OF THE SL-IND-....-SERIES !**



# SHIP-, MARINE- & OFFSHORE CABLES



## APPLICATION

The new generation of Fumo's marine cables is designed, manufactured, tested and approved for use in fixed applications on vessels and offshore platforms. The construction of the different types is halogen-free, light-weight, highly flexible and flame-retardant. Fumo marine cables feature special characteristics enabling reliable, fast and easy installations, by granting proper long-term cable lifetime.

All marine cables are designed and produced according to international standards. The choice of materials and constructions ensures that the cables are resistant to vibrations, most chemicals and hydro-carbons, which are commonly used on-board of ships. All marine cables fully comply with the requirements specified in IEC 60092 series of standards.

Fumo also offers specific cables for marine applications such as:

- flexible cables class 5
- fiber optic cables
- coaxial cables
- industrial cables.

# SHIP-, MARINE- & OFFSHORE CABLES

## APPROVALS

- American Bureau of Shipping (*ABS*),
  - Bureau Veritas (*BV*),
  - Det Norske Veritas (*DNV*),
  - Germanischer Lloyd (*GL*),
  - Lloyd Register of Shipping (*LRS*)
- additional approvals available on request -

## INTERNATIONAL STANDARDS

Fire performance: IEC 60332-1, IEC 60332-3 Cat.A, IEC 60754-1, IEC 61034-2  
Fire resistant cables: IEC 60331  
General standards: IEC 60092-350, IEC 60092-351, IEC 60092-353, IEC 60092-354, IEC 60092-359,  
IEC 60092-375, IEC 60092-376, IEC 60332-1, IEC 60332-3-22, IEC 60754-1,  
IEC 61034-1, IEC 60811, IEC 60228, IEC 60331-11, IEC 60331-21

## Part-Numbers

SL-CA/SHIP-..... *(due to the fact, that these cables are highly customized, part numbers will be defined only individually)*  
SL-CA/MARE-..... *(due to the fact, that these cables are highly customized, part numbers will be defined only individually)*  
SL-CA/OFF-..... *(due to the fact, that these cables are highly customized, part numbers will be defined only individually)*