

# PCAN-USB Pro FD

CAN FD and LIN Interface for  
High-Speed USB 2.0

## User Manual



Document version 1.0.0 (2014-08-06)

**PEAK**  
System

## Products taken into account

Product Name	Model	Part number
PCAN-USB Pro FD		IPEH-004061

CANopen® and CiA® are registered community trade marks of CAN in Automation e.V.

All other product names mentioned in this document may be the trademarks or registered trademarks of their respective companies. They are not explicitly marked by "™" or "®".

© 2014 PEAK-System Technik GmbH

PEAK-System Technik GmbH  
Otto-Roehm-Strasse 69  
64293 Darmstadt  
Germany

Phone: +49 (0)6151 8173-20  
Fax: +49 (0)6151 8173-29

[www.peak-system.com](http://www.peak-system.com)  
[info@peak-system.com](mailto:info@peak-system.com)

Document version 1.0.0 (2014-08-06)

# Contents

<b>1</b>	<b>Introduction</b>	<b>5</b>
1.1	Properties at a Glance	5
1.2	System Requirements	7
1.3	Scope of Supply	8
<b>2</b>	<b>Installing the Software and the Adapter</b>	<b>9</b>
<b>3</b>	<b>Connecting the CAN and LIN Bus</b>	<b>11</b>
3.1	D-Sub Connector CAN	11
3.2	D-Sub Connector LIN	12
3.3	Supplying External Devices via the D-Sub Connector	13
3.4	CAN Termination	16
3.5	Cabling	18
3.5.1	Termination	18
3.5.2	Example of a Connection	18
3.5.3	Maximum Bus Length	18
<b>4</b>	<b>Operation</b>	<b>20</b>
4.1	Status LEDs	20
4.2	Unplugging the USB Connection	21
4.3	Distinguishing Several PCAN-USB Pro Adapters	21
<b>5</b>	<b>Software and API</b>	<b>22</b>
5.1	Monitor Software PCAN-View	22
5.1.1	Receive/Transmit Tab	24
5.1.2	Trace Tab	27
5.1.3	PCAN-USB Pro FD Tab	28
5.1.4	Bus Load Tab	29
5.1.5	Error Generator Tab	30
5.1.6	Status Bar	31

5.2	LIN Monitor PLIN-View Pro for Windows	32
5.2.1	Receive/Transmit or Receive/Publisher Tab	34
5.2.2	Trace Tab	36
5.2.3	Status Bar	37
5.3	Linking Own Programs with PCAN-Basic	38
5.3.1	Features of PCAN-Basic	39
5.3.2	Principle Description of the API	40
5.3.3	Notes about the License	41
5.4	Linking Own Programs with the PLIN-API	42
6	Technical Specifications	44
Appendix A	CE Certificate	46
Appendix B	Dimension Drawing	47
Appendix C	Quick Reference	48

# 1 Introduction

The PCAN-USB Pro FD adapter enables the connection of CAN FD and LIN networks to a computer via USB. Two field busses can be connected at the same time, up to four with appropriate adapter cables (2 x CAN FD, 2 x LIN). Each CAN FD channel is separately isolated against USB and LIN with a maximum of 500 Volts. Its robust aluminum casing makes the PCAN-USB Pro FD adapter suitable for mobile applications.

The new CAN FD standard (CAN with Flexible Data Rate) is primarily characterized by higher bandwidth for data transfer. The maximum of 64 data bytes per CAN FD frame (instead of 8 so far) can be transmitted with bit rates up to 12 Mbit/s. CAN FD is downward-compatible to the CAN 2.0 A/B standard, thus CAN FD nodes can be used in existing CAN networks. However, in this case the CAN FD extensions are not applicable.

Software interfaces exist for different operating systems, so programs can easily access a connected CAN and/or LIN bus.



**Tip:** At the end of this manual (Appendix C) you can find a **Quick Reference** with brief information about the installation and operation of the PCAN-USB Pro FD adapter.

## 1.1 Properties at a Glance

- └ Adapter for High-speed USB 2.0  
(compatible to USB 1.1 and USB 3.0)
- └ Transmitting and receiving of CAN FD and LIN messages using 2 D-Sub connections (both with pin assignment for CAN and LIN bus)
- └ Time stamp resolution 1  $\mu$ s

- └ 5-Volt supply at the D-Sub connector can be activated through a solder jumper, e.g. for external bus converter
- └ Voltage supply via USB
- └ Extended operating temperature range -40 - 85 °C (-40 - 185 °F)


### **CAN operation properties**

- └ Complies with CAN specifications 2.0A/B and FD 1.0
- └ CAN FD bit rates for the data field (64 bytes max.) from 40 kbit/s up to 12 Mbit/s
- └ CAN bit rates from 40 kbit/s up to 1 Mbit/s
- └ FPGA implementation of the CAN FD controller
- └ NXP TJA1044GT CAN transceiver
- └ Each CAN channel is separately opto-decoupled against USB and LIN up to 500 V
- └ CAN termination can be activated through a solder jumper
- └ Measurements of bus load including error frames and overload frames
- └ Induced error generation for incoming and outgoing CAN messages

### **LIN operation properties**


- └ Bit rates from 1 up to 20 kbit/s
- └ TJA1021/22 LIN transceiver
- └ Both LIN channels (common ground) are opto-decoupled against USB and CAN
- └ Can be used as a LIN master or slave (1 ms master task resolution)
- └ Automatic bit rate, frame length, and checksum type recognition

- └ Autonomous scheduler with support for unconditional, event, and sporadic frames
- └ Hardware can work through a schedule table (up to 8 tables can be configured with a total of 256 slots)

 **Note:** This manual describes the use of the PCAN-USB Pro FD with **Windows**. You can find CAN drivers for **Linux** and the corresponding application information on the provided DVD in the directory branch `Develop` and on our website under [www.peak-system.com/linux](http://www.peak-system.com/linux).

## 1.2 System Requirements

- └ Operating system Windows 8.1, 7, Vista (32/64-bit) or Linux (32/64-bit)
- └ A vacant USB port (USB 1.1, USB 2.0 or USB 3.0 ) at the computer or at a USB hub connected to the computer
- └ For LIN operation: supply voltage 8 to 18 V for the LIN transceiver (e.g. car battery)

 **Note:** Do not use a USB extension cable to connect the PCAN-USB Pro FD adapter to the computer. The use of an extension cable does not comply with the USB specification and can lead to malfunction of the adapter.

## 1.3 Scope of Supply

- └ PCAN-USB Pro FD in aluminum casing
- └ CAN FD interface drivers for Windows 8.1, 7, Vista and Linux (32/64-bit)
- └ LIN interface drivers for Windows 8.1, 7, Vista (32/64-bit)
- └ PCAN-View monitor software for Windows 8.1, 7, Vista (32/64-bit)
- └ PLIN-View Pro LIN monitor for Windows 8.1, 7, Vista, (32/64-bit)
- └ PCAN-Basic programming interface consisting of an interface DLL, examples, and header files for all common programming languages
- └ PLIN-API programming interface consisting of an interface DLL, an example, and header files for all common programming languages
- └ Manual in PDF format



**Note:** Since the application possibilities of the PCAN-USB Pro FD adapter are various, special cable adapters for connecting the CAN and LIN busses are not provided. Therefore you need a 9-pin D-Sub female connector for your appliances to be connected individually.



## 2 Installing the Software and the Adapter


This chapter covers the software setup for the PCAN-USB Pro FD adapter under Windows and the connection of the adapter to a computer.

Setup the drivers before connecting the PCAN-USB Pro FD adapter to the computer for the first time.

▶ Do the following to install the drivers:

1. Insert the supplied DVD into the appropriate drive of the computer. Usually a navigation program appears a few moments later. If not, start the file `Intro.exe` from the root directory of the DVD.
2. Select in the main menu **Drivers**, and then click on the bottom right **Install now**.
3. Confirm that changes may be done on your computer or get administrator rights.
4. Select the suitable installation type for you.
5. Click on **Installation or Next**. The setup program for the driver is executed.
6. Follow the instructions of the program.

- ▶ Do the following to connect the PCAN-USB Pro FD adapter to the computer and complete the initialization:

 **Note:** Do not use a USB extension cable to connect the PCAN-USB Pro FD adapter to the computer. The use of an extension cable does not comply with the USB specification and can lead to malfunction of the adapter.

1. Connect the PCAN-USB Pro FD adapter to a USB port at the computer. The computer can remain powered on.  
Windows notifies that new hardware has been detected.
2. The drivers are found and installed by Windows.
3. Afterwards you can work as a user with restricted rights again.

After a successful initialization of the drivers for the CAN and the LIN bus the LEDs on the PCAN-USB Pro FD are green.

After the driver has been successfully set up you can find the "PCAN-USB Pro FD" entry in the "CAN-Hardware" branch of the Windows Device Manager.

## 3 Connecting the CAN and LIN Bus

Both D-Sub connectors on the PCAN-USB Pro adapter are each used for connecting one CAN and one LIN bus. The pin assignment is identical for both D-Sub connectors.



**Note:** Since the application possibilities of the PCAN-USB Pro adapter are various, special cable adapters for connecting the CAN and LIN busses are not provided. Therefore you need a 9-pin D-Sub female connector for your appliances to be connected individually.

### 3.1 D-Sub Connector CAN

Two High-speed CAN busses (ISO 11898-2) can be connected, one to each D-Sub connector. The pin assignment for CAN corresponds to the specification CiA® 102.

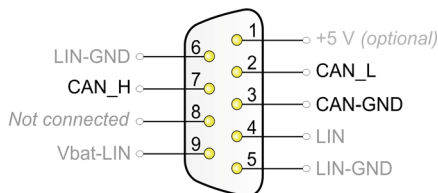


Figure 1: CAN pin assignment of the D-Sub connector

Each CAN connection separately has a **galvanic isolation** up to 500 V against USB and LIN.



**Tip:** You can connect a CAN bus with a different transmission standard via a bus converter. PEAK-System offers different bus converter modules (e.g. PCAN-TJA1054 for a Low-speed CAN bus according to ISO 11898-3).

## 3.2 D-Sub Connector LIN

Two LIN busses can be connected, one to each D-Sub connector.

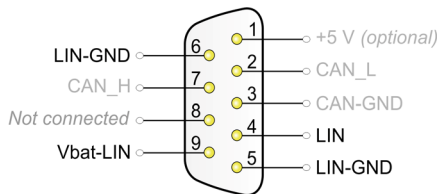


Figure 2: LIN pin assignment of the D-Sub connector

For the LIN operation an additional supply voltage must be applied to pin **Vbat-LIN** (8 - 18 V DC, e.g. car battery). Both LIN connections need their own supply.

Both LIN connections have a common **galvanic isolation** up to 500 V against USB and CAN. The LIN connections are not galvanically isolated against each other.

### 3.3 Supplying External Devices via the D-Sub Connector

On the circuit board of the PCAN-USB Pro FD adapter (casing opened) a 5-Volt supply can optionally be routed to pin 1 of each D-Sub connector. At delivery this pin is not assigned.

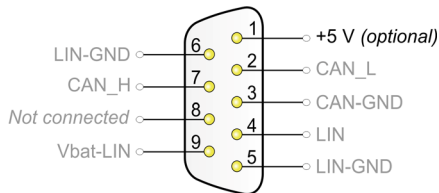


Figure 3: External 5-Volt supply at the D-Sub connectors

When using this option the 5-Volt supply is connected to the power supply of the computer and is not fused separately. A DC/DC converter is interconnected. Therefore the current output is limited to 50 mA.



**Tip:** On request we deliver the device configured with this option.

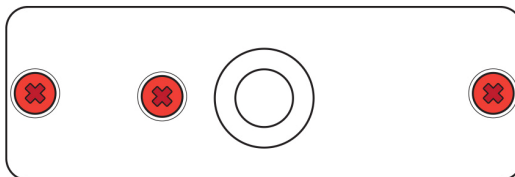


Proceed as follows to activate the 5-Volt supply:

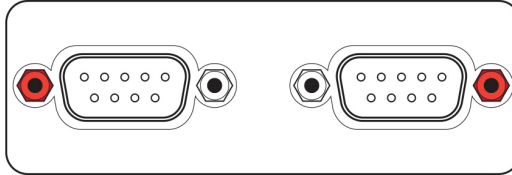


**Attention!** Electrostatic discharge (ESD) can damage or destroy components on the PCAN-USB Pro FD board. Take precautions to avoid ESD when handling the card.

1. Remove the three screws at the back of the casing.



2. Remove the two outer screws next to the D-Sub connectors at the front of the casing.



3. Remove the casing cover.
4. Lift the back of the case and slide the circuit board in direction of the front over the lower part of the casing. The bottom of the circuit board is accessible now.

Set the solder bridge(s) on the circuit board of the PCAN-USB Pro FD adapter according to the desired function. During this procedure take especially care not to produce unwanted short circuits on the board.

The following figure shows the positions of the solder fields JP4 and JP7 on the circuit board of the PCAN-USB Pro FD adapter; the table below contains the possible settings.

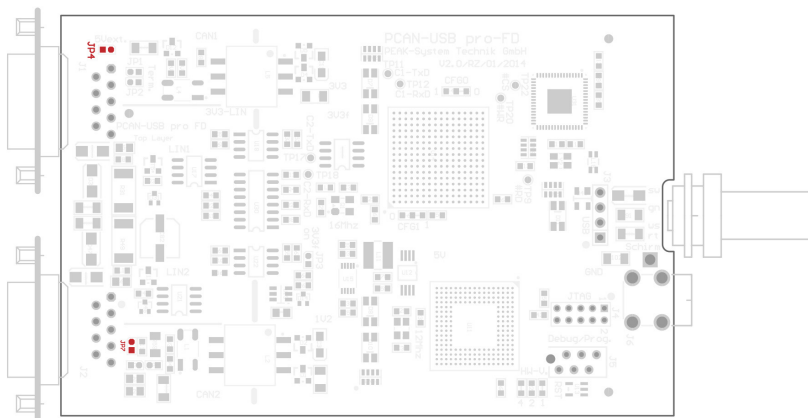






Figure 4: Top view **PCAN-USB Pro FD** board,  
solder fields JP4/JP7

5-Volt supply →	None	Pin 1
CAN1, solder field JP4		
CAN2, solder field JP7		

After you have done the settings, reassemble the device. Slide the circuit board back into the lower part of the casing, close the casing cover, and screw the front and back side.



**Attention! Risk of short circuit!** If the option described in this section is activated, you may only connect or disconnect CAN cables or peripheral systems (e.g. external bus converters) to or from the PCAN-USB Pro FD while it is de-energized (the PCAN-USB Pro FD adapter is not connected to the computer). Consider that some computers still supply the USB ports with power even when they are turned off (standby operation).

## 3.4 CAN Termination

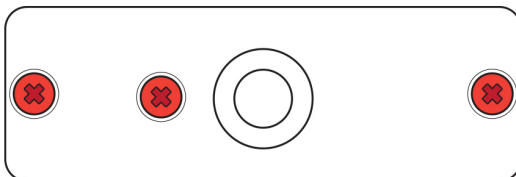
The termination can be activated by solder jumpers for each channel on the board. At delivery the termination is not activated. A High-speed CAN bus (ISO 11898-2) must be terminated on both ends with 120 Ohms. Otherwise disturbances may arise. If a CAN bus is not terminated correctly, activate the internal termination.

- ▶ To activate the termination, two solder jumpers must be soldered for each channel. Proceed as follows to activate the termination:

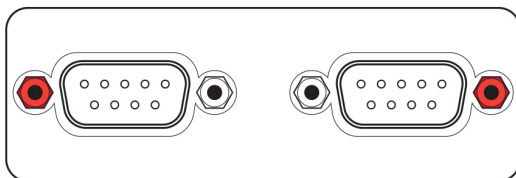


**Attention!** Electrostatic discharge (ESD) can damage or destroy components on the PCAN-USB Pro FD board. Take precautions to avoid ESD when handling the card.

1. Remove the three screws at the back of the casing.



2. Remove the two outer screws next to the D-Sub connectors at the front of the casing.



3. Remove the casing cover.
4. Lift the back of the case and slide the circuit board in direction of the front over the lower part of the casing. The bottom of the circuit board is accessible now.



Set the solder bridges on the circuit board of the PCAN-USB Pro FD adapter to activate the termination. During this procedure take especially care not to produce unwanted short circuits on the board.

Figure 5 shows the positions of the solder fields JP1 and JP2 for CAN 1 and JP5 and JP6 for CAN 2 for the termination.

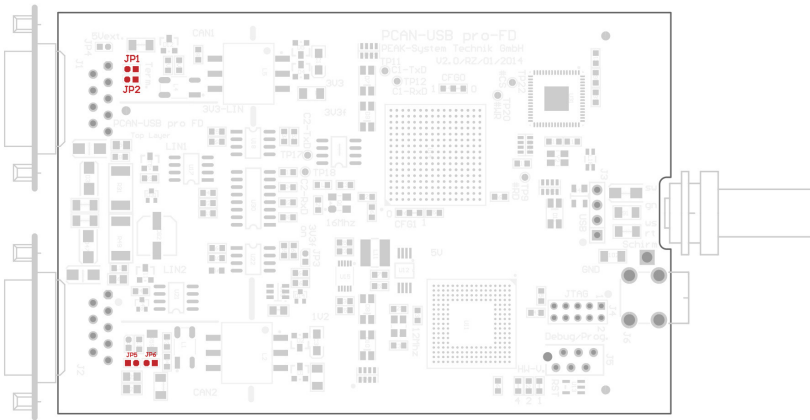


Figure 5: Top view **PCAN-USB Pro FD** board,  
solder fields JP1/JP2 and JP5/JP6

After you have done the settings, reassemble the device. Slide the circuit board back into the lower part of the casing, close the casing cover, and screw the front and back side.

## 3.5 Cabling

### 3.5.1 Termination

A High-speed CAN bus (ISO 11898-2) must be terminated on both ends with 120 Ohms. Otherwise, there are interfering signal reflections and the transceivers of the connected CAN nodes (CAN interface, control device) will not work.

The PCAN-USB Pro FD adapter has a switchable internal termination (see section 3.4 on page 16). If a CAN bus is not terminated correctly, activate the internal termination.

### 3.5.2 Example of a Connection

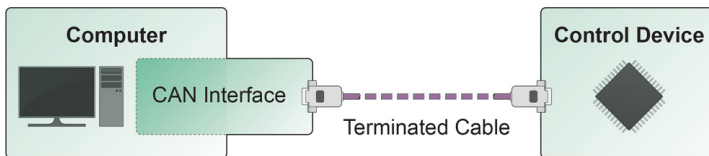


Figure 6: Simple CAN connection

In this example, the PCAN-USB Pro FD adapter is connected with a control unit by a cable that is terminated at both ends.

### 3.5.3 Maximum Bus Length

High-Speed-CAN networks may have bit rates of up to 1 Mbit/s. The maximum bus length depends primarily on the bit rate.

The following table shows the maximum possible CAN bus length at different bit rates:

Bit rate	Bus length
1 Mbit/s	40 m
500 kbit/s	110 m
250 kbit/s	240 m
125 kbit/s	500 m
50 kbit/s	1.3 km

The listed values have been calculated on the basis of an idealized system and can differ from reality.

The dependency of the bus length of the transmission rate is based on the arbitration phase of CAN communication. For CAN FD the transmission rate of arbitration is determined by the nominal bit rate. Through this can only take a maximum value of 1 Mbit/s, apply for CAN FD the same maximum bus lengths as for CAN, despite the higher data transfer.



LED	Status	Meaning
CAN1/2	Green on	The CAN interface is initialized. There's a connection to a driver of the operating system.
	Green slow blinking	A software application is connected to the CAN interface.
	Green quick blinking	Data is transmitted via the connected CAN bus.
	Red quick blinking	An error is occurring during the transmission of CAN data, e.g. OVERRUN or BUSHEAVY.
LIN1/2	Green on	There's a connection to a driver of the operating system.
	Green slow blinking	The LIN interface is initialized with a valid bit rate. A software application is connected to the LIN interface.
	Green quick blinking	Data is transmitted via the connected LIN bus.

## 4.2 Unplugging the USB Connection

On Windows, the icon for removing hardware safely is not used with the PCAN-USB Pro FD adapter. You may unplug the adapter from the computer without any preparation.

## 4.3 Distinguishing Several PCAN-USB Pro Adapters

You can operate several PCAN-USB Pro FD adapters on a single computer at the same time. The supplied program PCAN-View allows the assignment of device IDs in order to distinguish the adapters in a software environment. For more information see section 5.1.3 on page 28.

## 5 software and API

This chapter covers the provided software PCAN-View and PLIN-View Pro and the programming interfaces PCAN-Basic and the PLIN-API.

### 5.1 Monitor Software PCAN-View

PCAN-View is simple Windows software for viewing, transmitting, and logging CAN- and CAN FD messages.



**Note:** This chapter describes the use of PCAN-View with a CAN-FD adapter.

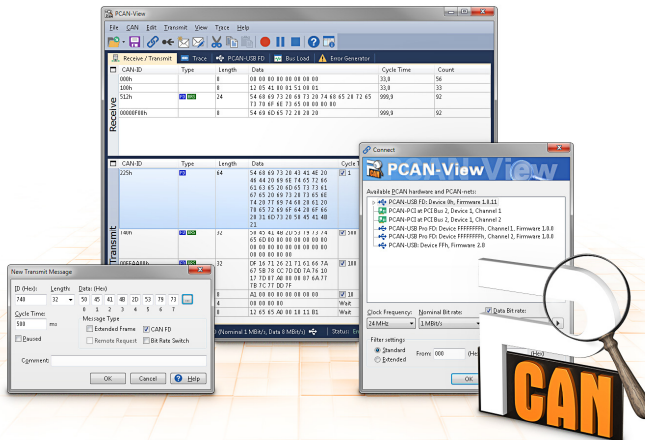


Figure 8: PCAN-View for Windows

▶ Do the following to start and initialize PCAN-View:

1. Open the Windows Start menu, go to **Programs > PEAK-Drivers**, and select the entry **PCAN-View**.

The dialog box for selecting the hardware and for setting the parameters appears.

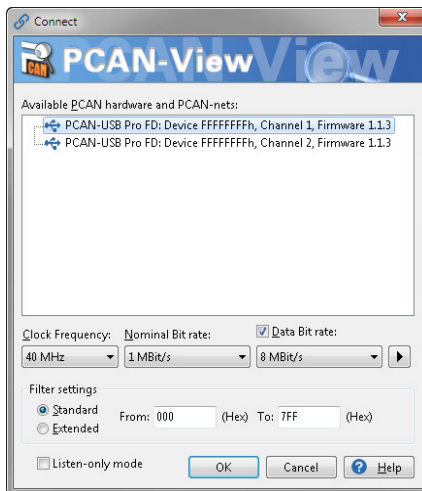


Figure 9: Selection of the specific hardware and parameters

2. From the list **Available PCAN hardware and PCAN-nets** select the desired interface to be used.
3. Choose the **Clock Frequency**. The selectable bit rates in the following are based on this settings.
4. Select from the dropdown list **Nominal Bit rate** the transmission rate that is used for the Arbitration phase.

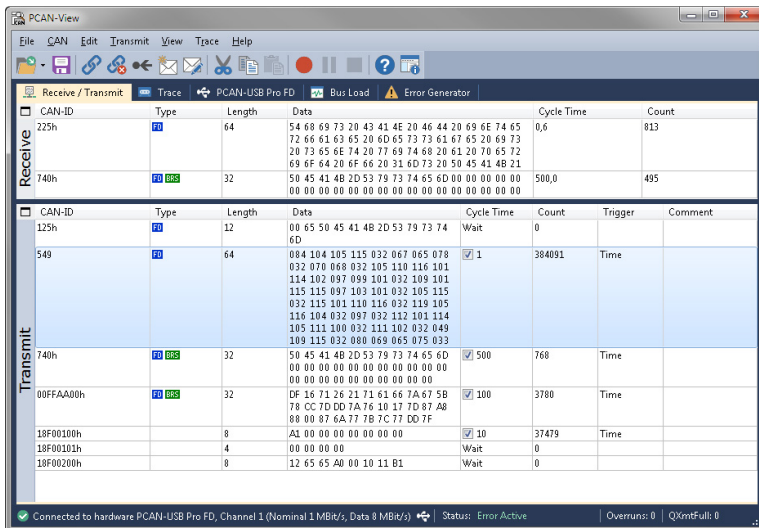
Choose from the dropdown list **Data Bit Rate**, an additional data bit rate for the CAN-FD bus. The bit rate selected here is used to transfer the data fields of a CAN frame with a higher bit rate.



**Note:** Both transmission rates must match those which are used by all nodes on the CAN bus. You can create user-defined transmission rates using the button to the right of the drop-down lists.

- Under **Filter settings** you can limit the range of CAN IDs to be received, either for standard frames (11-bit IDs) or for extended frames (29-bit IDs).
- Finally confirm the settings in the dialog box with **OK**. The main window of PCAN-View appears (see Figure 10).

### 5.1.1 Receive/Transmit Tab





CAN-ID	Type	Length	Data	Cycle Time	Count	Trigger	Comment
225h	0	64	54 68 69 73 20 43 41 4E 20 46 44 20 69 6E 74 65 72 66 61 63 65 20 6D 65 73 73 61 67 65 20 69 73 20 73 65 6E 74 20 77 69 74 68 20 61 20 70 65 72 69 6F 64 20 6F 66 20 31 6D 73 20 50 45 41 4B 21	0,6	813		
740h	0	32	50 45 41 4B 2D 53 79 73 74 65 6D 00 00 00 00	500,0	495		
125h	0	12	00 65 50 45 41 4B 2D 53 79 73 74 6D	Wait	0		
549	0	64	084 104 105 115 032 067 065 078 032 070 068 032 105 110 116 101 114 102 097 099 101 032 109 101 115 115 097 103 101 032 105 115 032 115 101 110 116 032 119 105 116 104 032 097 032 112 101 114 105 111 100 032 111 102 032 049 109 115 032 080 069 065 075 033	1	384091	Time	
740h	0	32	50 45 41 4B 2D 53 79 73 74 65 6D 00	500	768	Time	
00FFAA00h	0	32	DF 16 71 26 21 71 61 66 7A 67 5B 78 CC 7D DD 7A 76 10 17 7D 87 A8 88 00 87 6A 77 7B 7C 77 DD 7F	100	3780	Time	
18FD0100h	0	8	A1 00 00 00 00 00 00 00	10	37479	Time	
18FD0101h	0	4	00 00 00 00	Wait	0		
18FD0200h	0	8	12 65 65 A8 00 10 11 B1	Wait	0		

Figure 10: Receive/Transmit tab

The Receive/Transmit tab is the main element of PCAN-View. It contains two lists, one for received messages and one for the transmit messages. The representation of the data is done primarily in hexadecimal format.



- ▶ Do the following to transmit a CAN FD message with PCAN-View:

1. Select the menu command **Transmit > New Message** (alternatively  or .

The dialog box **New Transmit Message** is shown.

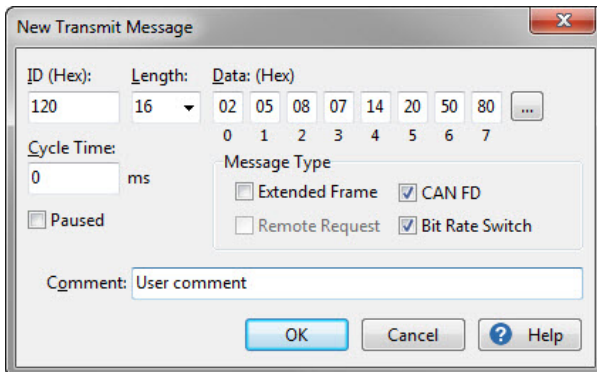



Figure 11: Dialog box new transmit message

2. Enter the ID and the data for the new CAN message. With a length of more than 8 bytes, the data on the button to the right is entered beside the eighth data field.
3. The field **Cycle Time** indicates if the message shall be transmitted manually or periodically. If you want to transmit the message periodically, you must enter a value greater than 0. For a manual-only transmission enter 0.
4. To define a CAN FD message, activate the checkbox **CAN FD**. Allows you to set a maximum length of 64 bytes of data.

 **Note:** The values of the DLC (Data Length Code) represent a list of defined data field sizes up to 64 bytes. In the range of 9 to 15, the value of the DLC no longer matches the data field length. The "Length" indicates the resulting data field length.

5. Activate the checkbox **Bit Rate Switch** to ensure that the data of a CAN-FD message is transmitted with the Data Bit Rate.

6. Confirm the entries with **OK**.

The created transmit message appears on the **Receive/Transmit** tab.

7. You trigger selected transmit messages manually with the menu command **Transmit > Send** (alternatively **Space** bar). The manual transmission for CAN messages being transmitted periodically is carried out additionally.



**Tip:** Using the menu command **File > Save** the current transmit messages can be saved to a list and loaded for reuse later on.

## 5.1.2 Trace Tab

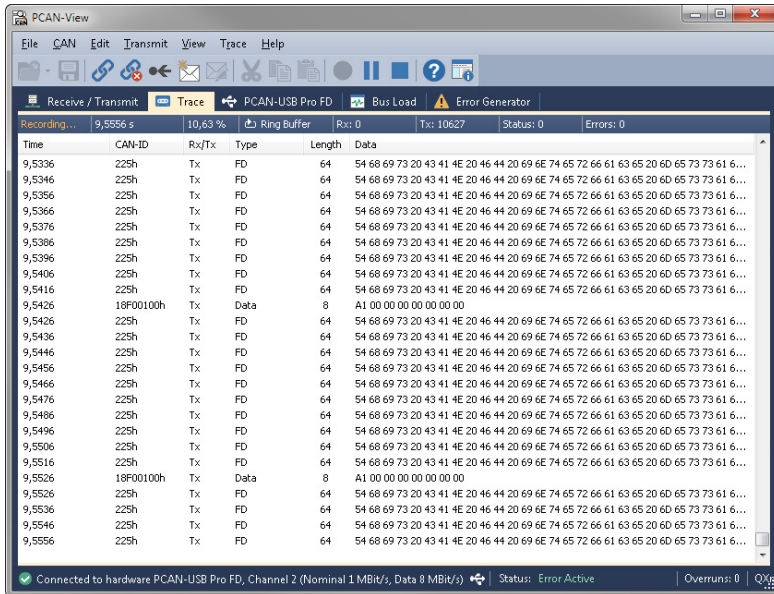


Figure 12: Trace tab

On the Trace tab the data tracer of PCAN-View is used for logging the communication on a CAN bus. During this process the messages are cached in the working memory of the PC. Afterwards they can be saved to a file.

The tracer can be configured to run in linear or in ring buffer mode. In linear buffer mode the logging is stopped as soon as the buffer is filled completely. In ring buffer mode the oldest messages are overwritten by incoming ones.

### 5.1.3 PCAN-USB Pro FD Tab

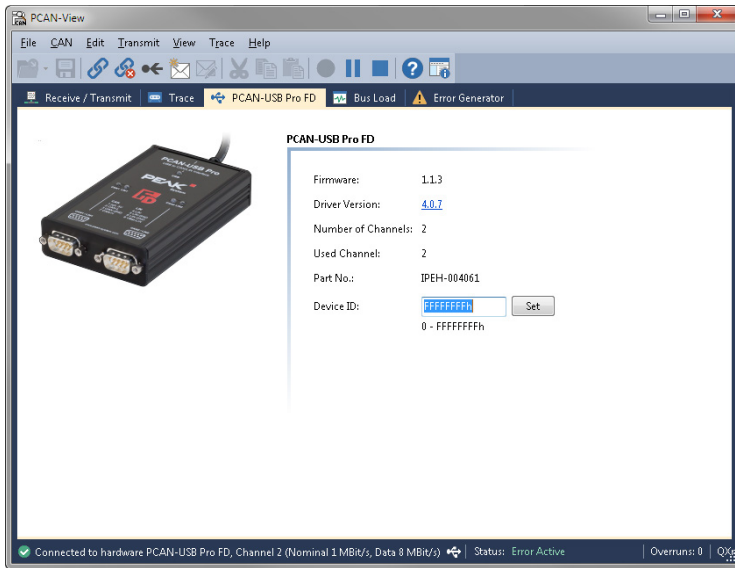


Figure 13: PCAN-USB Pro FD tab

On the PCAN-USB Pro FD tab various information about your hardware is displayed, like the current firmware version. In addition, you can assign a device ID to the adapter. Thus, it can be uniquely identified while operating several PCAN-USB Pro FD adapters on a computer at the same time.

To identify a PCAN-USB Pro FD adapter, you first go to the dialog box for selecting the hardware of PCAN-View (Figure 9 on page 23). In the list “Available PCAN hardware and PCAN-nets”, you can perform a right-click on every USB adapter and execute the command “identify”. Thereby the LED of the corresponding adapter flashes shortly.

### 5.1.4 Bus Load Tab

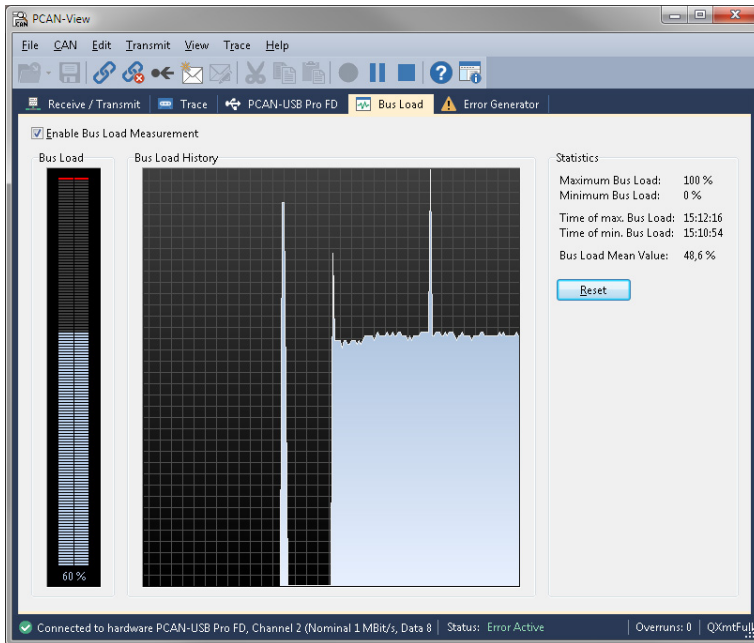


Figure 14: Bus Load tab

On the Bus Load tab the current bus load of the connected CAN channel and its course over time are displayed along with statistical information. The bus load of a CAN bus reflects the utilization of transmission capacity. The more messages are transmitted on the bus, the higher is the bus load.

The current bus load on the connected CAN bus is shown in the bar display **Bus Load** in percent. The course of the bus load over time is displayed in the progress bar **Bus Load History**. In **Statistics**, statistical information are displayed. This data shows the minimum and maximum bus load, and the bus load's arithmetic mean value. With **Reset** you can reset the statistical values.

## 5.1.5 Error Generator Tab

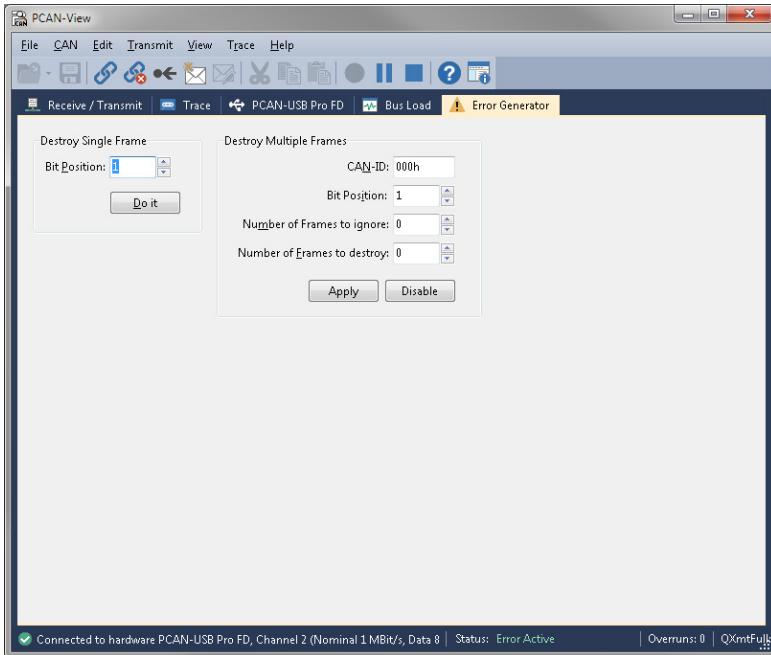


Figure 15: Error Generator tab

The Error Generator tab can be used to generate error frames on the connected CAN bus.

In the area **Destroy Single Frame** you can destroy single CAN- or CAN FD frame on the bus.

► Do the following to destroy a **Single Frame**:

1. Enter the **Bit-Position** where in a CAN frame the error shall be generated.
2. Execute the destroy action with **Do it**.

The next received or transmitted CAN frame will be destroyed at the selected bit position.

In the area **Destroy Multiple Frames** you can repeatedly destroy incoming CAN frames that have a certain CAN ID.

➡ Do the following to destroy **Multiple Frames**:

1. Enter the **CAN ID** of the frame to be destroyed.
2. Enter the **Bit-Position** where in the CAN frame the error shall be generated.
3. The field **Number of Frames to ignore** specifies the number of CAN frames that are ignored before a frame is destroyed.
4. The field **Number of Frames to destroy** specifies the number of CAN frames that are destroyed in succession.
5. Confirm the entries with **Apply** to activate the error generator. To disable the error generator press **Disable**.



**Note:** While the destruction of single CAN frames includes incoming and outgoing messages, the destruction of multiple CAN frames only affects incoming messages.

### 5.1.6 Status Bar

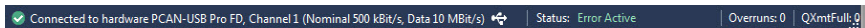


Figure 16: Display of the status bar

The status bar shows information about the current CAN connection, about error counters (Overruns, QXmtFull), and shows error messages.

You can find further information about the use of PCAN-View in the help which you can invoke in the program via the menu **Help** or the **F1** key.

## 5.2 LIN Monitor PLIN-View Pro for Windows

PLIN-View for Windows is a simple LIN monitor for receiving and transmitting LIN messages.

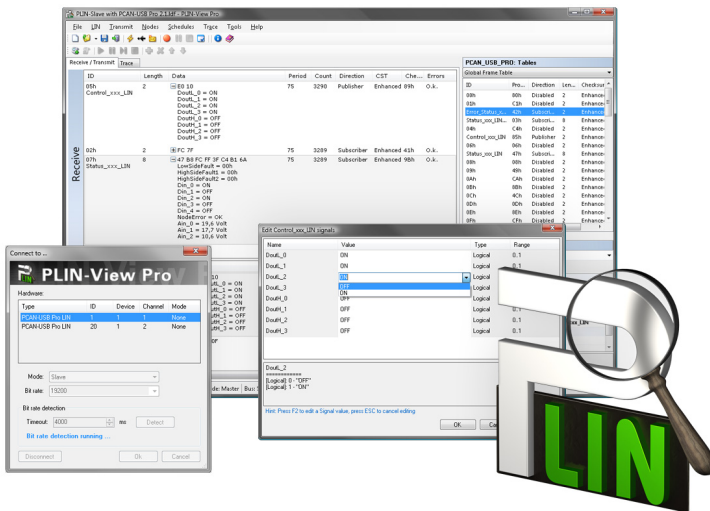




Figure 17: PLIN-View Pro for Windows

 **Note:** PLIN-View Pro is provided exclusively for the use with the PCAN-USB Pro (FD).

 Do the following to start and initialize PLIN-View Pro:

1. Start the program PLIN-View Pro from the Windows Start Menu **All Programs > PEAK-Drivers** and then **PLIN-View Pro**.

The dialog box for selecting the LIN hardware and for setting the LIN parameters appears.



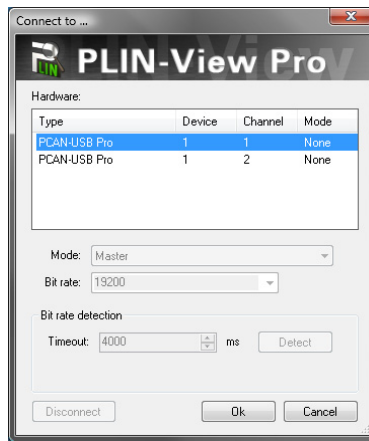


Figure 18: Selection of the LIN specific hardware and parameters

2. From the **Hardware** list, select the LIN channel to be used.
3. From the dropdown list **Mode**, select the operation mode Master or Slave to be used for the LIN channel.
4. Select the bit rate that is used by all nodes on the LIN bus from the dropdown list **Bit rate**.
5. If you do not know the bit rate for the connected LIN bus, you can automatically detect the used bit rate with the function **Bit rate detection**. In the field **Timeout** you can set the time, to wait for a response from the hardware until the timeout occurs. Confirm with **Detect**.



**Note:** The LIN channel where the **Bit rate detection** is to be executed must not be initialized (no connection to a software).

If a bit rate was determined successfully, it automatically appears in the dropdown list **Bit rate**.

6. Finally confirm the settings in the dialog box with **OK**. The main window of PLIN-View Pro appears (see Figure 19).

## 5.2.1 Receive/Transmit or Receive/Publisher Tab

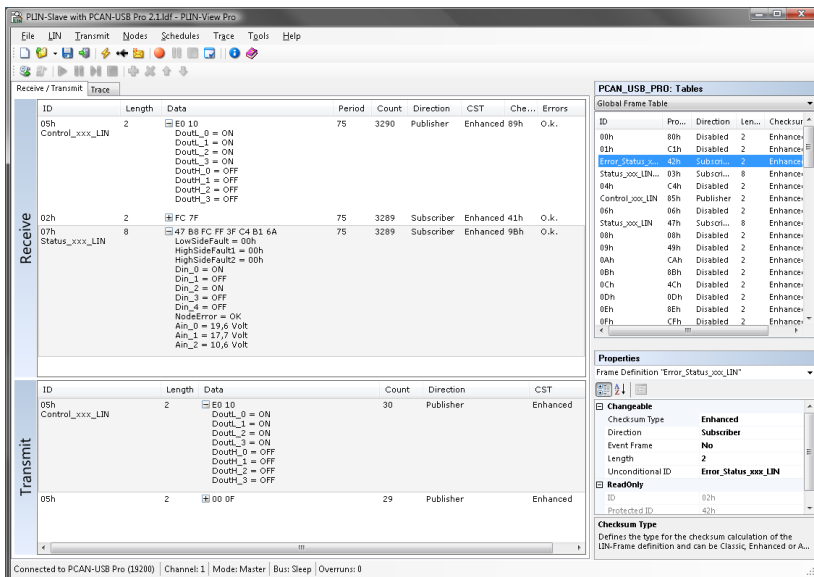



Figure 19: Receive/Transmit tab

The Receive/Transmit or Receive/Publisher tab is the main element of PLIN-View Pro. It contains two lists, one for received and one for transmitted LIN frames. If you are logged in as LIN-Master, the Receive/Transmit tab appears. In Master mode you can transmit frames on the LIN bus. If you are logged in as LIN-Slave, the Receive/Publisher tab appears. In Slave mode you cannot transmit frames. If the Master requests data from a Slave, he can publish it in the LIN frame. In the Global Frame Table all defined LIN frame entries are stored that can be set with the PCAN-USB Pro FD. To transmit a LIN frame you have to adjust the underlying frame definition in the properties.

▶ Do the following to transmit a LIN frame with PLIN-View Pro:

1. Select a frame from the Global Frame Table.

2. Change the property **Checksum Type** to Enhanced or Classic.
3. Change the property **Direction** in Publisher.
4. Select the menu command **Transmit > New Frame** (alternatively )

The dialog box **New frame** is shown.

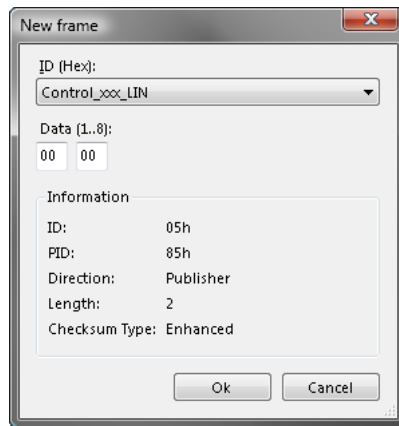


Figure 20: Dialog box New frame

5. Select the frame that should be transmitted from the dropdown list **ID**.
6. Enter in the field **Data** the data for the LIN frame.
7. Confirm the entries with **OK**.
8. Send the selected frame with the menu command **Transmit > Send** (alternatively Space bar).

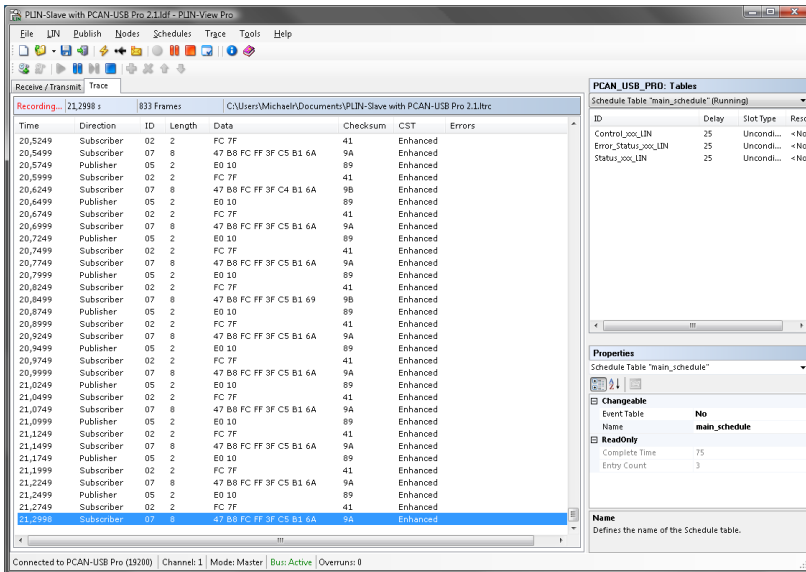


**Note:** You can also manage and perform Schedule Tables. Furthermore you can open LDF files and manage Schedule Tables with their information. The Schedule Tables are used to validate or edit data and to present it symbolically.



**Tip:** You can use PLIN projects to simplify the work with the Global Frame Table, the Transmit or Publisher list, the Schedule tables, and the LDF files. With the menu command **File > Save** all files and configurations are saved in such a project for later use.

## 5.2.2 Trace Tab



The screenshot shows the PCAN-USB Pro FD software interface. The main window is titled "PLIN-Slave with PCAN-USB Pro 2.1 Ldf - PLIN-View Pro". The menu bar includes File, LIN, Publish, Nodes, Schedules, Trace, Tools, and Help. The toolbar contains various icons for file operations and tracing. The "Trace" tab is active, showing a table of recorded frames. The table has columns: Time, Direction, ID, Length, Data, Checksum, CST, and Errors. The data shows a sequence of frames from 20,8249 to 21,2998, with directions alternating between Subscriber and Publisher. The right sidebar shows the "PCAN\_USB\_PRO: Tables" section, which includes a "Schedule Table 'main\_schedule' (Running)". Below this, the "Properties" section for the "main\_schedule" table is visible, showing fields like "EventTable", "Name", "Complete Time", and "Entry Count".

Time	Direction	ID	Length	Data	Checksum	CST	Errors
20,8249	Subscriber	02	2	FC 7F	41	Enhanced	
20,8499	Subscriber	07	8	47 B8 FC FF 3F C5 B1 6A	9A	Enhanced	
20,8749	Publisher	05	2	E0 10	89	Enhanced	
20,8999	Subscriber	02	2	FC 7F	41	Enhanced	
20,9249	Subscriber	07	8	47 B8 FC FF 3F C4 B1 6A	9B	Enhanced	
20,9499	Publisher	05	2	E0 10	89	Enhanced	
20,9749	Subscriber	02	2	FC 7F	41	Enhanced	
20,9999	Subscriber	07	8	47 B8 FC FF 3F C5 B1 6A	9A	Enhanced	
21,0249	Publisher	05	2	E0 10	89	Enhanced	
21,0499	Subscriber	02	2	FC 7F	41	Enhanced	
21,0749	Subscriber	07	8	47 B8 FC FF 3F C5 B1 6A	9A	Enhanced	
21,0999	Publisher	05	2	E0 10	89	Enhanced	
21,1249	Subscriber	02	2	FC 7F	41	Enhanced	
21,1499	Subscriber	07	8	47 B8 FC FF 3F C5 B1 6A	9A	Enhanced	
21,1749	Publisher	05	2	E0 10	89	Enhanced	
21,1999	Subscriber	02	2	FC 7F	41	Enhanced	
21,2249	Subscriber	07	8	47 B8 FC FF 3F C5 B1 6A	9A	Enhanced	
21,2499	Publisher	05	2	E0 10	89	Enhanced	
21,2749	Subscriber	02	2	FC 7F	41	Enhanced	
21,2998	Subscriber	07	8	47 B8 FC FF 3F C5 B1 6A	9A	Enhanced	

Connected to PCAN-USB Pro (35200) Channel: 1 Mode: Master Bus: Active Overruns: 0

Figure 21: Trace tab

On the Trace tab the tracer of PLIN-View Pro is used for logging and presenting the communication of a LIN bus.

At the start of the tracer the dialog box **Save** is shown. Enter a filename under which the recording should be stored. The storage of data is done continuously until the tracer is stopped or the storage space on the selected medium is no longer sufficient.

On the upper part of the tracer is a line that issues various information about the tracer status: the current status of the LIN tracer, the complete duration that the tracer is running and recording, the number of recorded LIN frames, and the file name under which the recording will be saved.

### 5.2.3 Status Bar

Connected to PCAN-USB Pro (19200)	Channel: 1	Mode: Master	Bus: Active	Overruns: 0
-----------------------------------	------------	--------------	-------------	-------------

Figure 22: Display of the Status bar

The status bar shows information about the current LIN hardware, the connected LIN channel, the used operation mode, the status of the LIN bus (Active/Sleep), and a counter of not transmitted or received LIN frames (Overruns).

You can find further information about the use of PLIN-View Pro in the help which you can invoke in the program via the menu **Help** or the **F1** key.

## 5.3 Linking Own Programs with PCAN-Basic

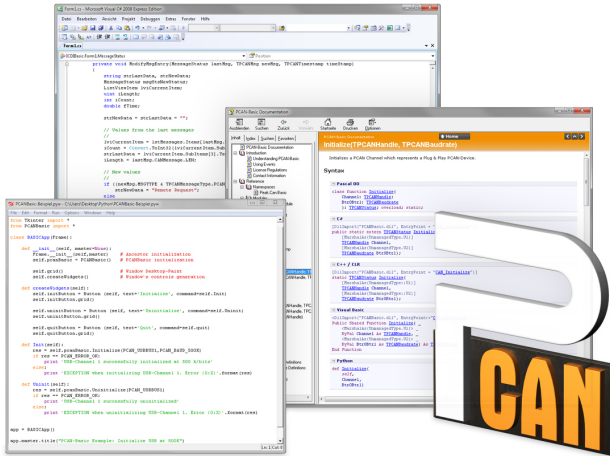


Figure 23: PCAN-Basic

On the provided DVD you can find files of the programming interface PCAN-Basic in the directory branch `Develop`. This API provides basic functions for linking own programs to CAN- and CAN FD interfaces by PEAK-System and can be used for the following operating systems:

- └ Windows 8.1, 7, Vista (32/64-bit)
- └ Windows CE 6.x (x86/ARMv4)
- └ Linux (32/64-bit)

The API is designed for cross-platform use. Therefore software projects can easily be ported between platforms with low efforts. For all common programming languages examples are available.

Beginning with version 4, PCAN-Basic supports the new CAN FD standard (CAN with Flexible Data Rate) which is primarily characterized by higher bandwidth for data transfer.

### 5.3.1 Features of PCAN-Basic

- └ API for developing applications with CAN and CAN FD connection
- └ Supports Windows 8.1, 7, Vista (32/64-bit), Windows CE 6.x, and Linux (32/64-bit) operating system
- └ Multiple PEAK-System applications and your own can be operated on a physical channel at the same time
- └ Use of a single DLL for all supported hardware types
- └ Use of up to 8 channels for each hardware unit (depending on the PEAK CAN interface used)
- └ Simple switching between the channels of a PEAK CAN interface
- └ Driver-internal buffer for 32,768 messages per CAN channel
- └ Precision of time stamps on received messages up to 1  $\mu$ s (depending on the PEAK CAN interface used)
- └ Access to specific hardware parameters, such as listen-only mode
- └ Notification of the application through Windows events when a message is received
- └ Extended system for debugging operations
- └ Multilingual debugging output
- └ Output language depends on operating systems
- └ Debugging information can be defined individually

An overview of the API functions is located in the header files. You can find detailed information about the PCAN-Basic API on the provided DVD in the text and help files (file name extensions `.txt` and `.chm`).

### 5.3.2 Principle Description of the API

The PCAN-Basic API is the interface between the user application and device driver. In Windows operating systems this is a DLL (Dynamic Link Library).

The sequence of accessing the CAN interface is divided into three phases:

1. Initialization
2. Interaction
3. Completion

#### Initialization

A channel must be initialized before using it. This is done by the simple call of the function `CAN_Initialize` for CAN and `CAN_InitializeFD` for CAN-FD. Depending on the type of the CAN hardware, up to eight CAN channels can be opened at the same time. After a successful initialization the CAN channel is ready for communication with the CAN hardware and the CAN bus. No further configuration steps are required.

#### Interaction

For receiving and transmitting messages the functions `CAN_Read` and `CAN_Write` as well as `CAN_ReadFD` and `CAN_WriteFD` are available. Additional settings can be made, e.g. setting up message filters to confine to specific CAN IDs or setting the CAN controller to listen-only mode.

When receiving CAN messages, events are used for an automatic notification of an application (client). This offers the following advantages:

- The application no longer needs to check for received messages periodically (no polling).
- The response time at reception is reduced.



## Completion

To end the communication the function `CAN_Uninitialize` is called in order to release the reserved resources for the CAN channel, among others. In addition the CAN channel is marked as "Free" and is available to other applications.

### 5.3.3 Notes about the License

Device drivers, the interface DLL, and further files needed for linking are property of the PEAK-System Technik GmbH and may be used only in connection with a hardware component purchased from PEAK-System or one of its partners. If a CAN hardware component of third-party suppliers should be compatible to one of PEAK-System, then you are not allowed to use or to pass on the driver software of PEAK-System.

If a third-party supplier develops software based on the PCAN-Basic and problems occur during the use of this software, consult the software provider.

## 5.4 Linking Own Programs with the PLIN-API

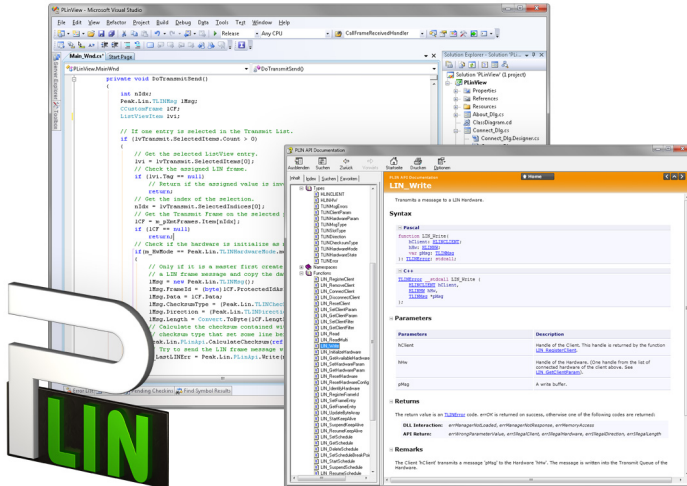


Figure 24: PLIN-API

On the provided DVD you can find files to develop Windows software with an interface to a LIN bus in the directory branch Develop/PC interfaces/Windows/PLIN-API.

**Note:** PLIN-API is provided exclusively for the use with the PCAN-USB Pro (FD).

Furthermore, the DVD contains header files and a programming example for creating own applications in conjunction with the PLIN-API. Read the detailed documentation of the interface (API) in the corresponding header file.

You can find further information in the text and help files (file name extensions .txt and .chm).

## Notes about the License

Device drivers, the PLIN interface DLL, and further files needed for linking are property of the PEAK-System Technik GmbH and may be used only in connection with a hardware component purchased from PEAK-System or one of its partners. If a LIN hardware component of third-party suppliers should be compatible to one of PEAK-System, then you are not allowed to use or to pass on the driver software of PEAK-System.

If a third-party supplier develops software based on the PLIN-API and problems occur during use of this software, consult the software provider.

## 6 Technical specifications

### Connectors

USB	USB plug type A
CAN/LIN	D-Sub (m), 9 pins Pin assignment according to specification CiA® 102

### USB

Type	High-speed USB 2.0 (compatible with USB 1.1 and USB 3.0)
------	--

### CAN

Specification	CAN FD 1.0 (compatible with CAN 2.0)
Transmission standards	CAN FD, ISO 11898-2 (High-speed CAN)
CAN bit rates	40 kbit/s - 1 Mbit/s
CAN FD bit rates	40 kbit/s - 12 Mbit/s
Controller	FPGA implementation
Timestamp resolution	1 µs
Transceiver	TJA1044GT
Termination	Not activated, switchable by solder jumper
Galvanic isolation	Up to 500 V The CAN connections are isolated separately.
Supplying external devices	D-Sub Pin 1; 5 V, max. 50 mA Not assigned at delivery

### LIN

Bit rates	1 kbit/s - 20 kbit/s
Specification	LIN specification 2.1
Timestamp resolution	1 µs
Transceiver	TJA1021/22
Galvanic isolation	Up to 500 V The LIN connections have a common ground.

Continued on the next page

**Power supply**

Supply voltage	5 V DC via USB port LIN operation: 8 - 18 V DC via D-Sub connector
Power consumption	max. 200 mA at 5 V via USB

**Environment**

Operating temperature	-40 - 85 °C (-40 - 185 °F)
Temperature for storage and transport	-40 - 100 °C (-40 - 212 °F)
Relative humidity	15 - 90 %, not condensing
EMC	EN 55024:2011-09 EN 55022:2011-12 EC directive 2004/108/EG
Ingress protection (IEC 60529)	IP20

**Measures**

Size	71.5 x 24 x 114 mm (W x H x D) (without connection cable) See also dimension drawings in Appendix B on page 47
Cable length	ca. 1.5 m
Weight	220 g (with USB cable)

# Appendix A CE Certificate

PCAN-USB Pro FD IPEH-004061 – EC Declaration of Conformity  
PEAK-System Technik GmbH



## Notes on the CE Symbol

The following applies to the "PCAN-USB Pro FD" product with the item number(s) IPEH-004061.

**EC Directive** This product fulfills the requirements of EU EMC Directive 2004/108/EG (Electromagnetic Compatibility) and is designed for the following fields of application as for the CE marking:

### Electromagnetic Immunity

DIN EN 55024, publication date 2011-09  
Information technology equipment – Immunity characteristics – Limits and methods of measurement (CISPR 24:2010);  
German version EN 55024:2010

### Electromagnetic Emission

DIN EN 55022, publication date 2011-12  
Information technology equipment – Radio disturbance characteristics – Limits and methods of measurement (CISPR 22:2008, modified);  
German version EN 55022:2010

**Declarations of Conformity** In accordance with the above mentioned EU directives, the EC declarations of conformity and the associated documentation are held at the disposal of the competent authorities at the address below:

### PEAK-System Technik GmbH

Mr. Wilhelm  
Otto-Roehm-Strasse 69  
64293 Darmstadt  
Germany

Phone: +49 (0)6151 8173-20  
Fax: +49 (0)6151 8173-29  
E-mail: [info@peak-system.com](mailto:info@peak-system.com)

A handwritten signature in black ink, appearing to read "Uwe W. H.", is written over a horizontal line.

Signed this 2<sup>nd</sup> day of July 2014

## Appendix B Dimension Drawing

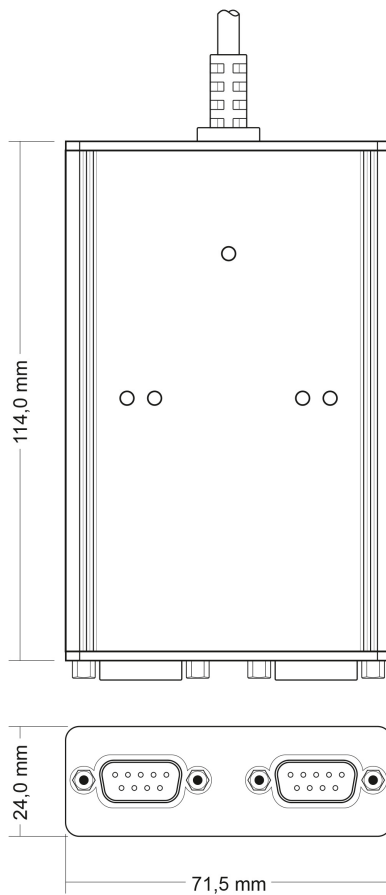


Figure 25: Top view of housing

The figure doesn't show the actual size of the product.

## Appendix C Quick Reference

### Software/Hardware Installation under windows

Before connecting the PCAN-USB Pro FD adapter to the computer set up the corresponding software package from the supplied DVD (with administrator privileges). Afterwards connect the PCAN-USB Pro FD adapter to a USB port at your computer. The adapter is recognized by Windows and the drivers are initialized. After the installation process for the CAN/LIN interfaces is finished successfully the LEDs on the adapter are green.

### Getting started under windows

Run the CAN monitor PCAN-View or the LIN monitor PLIN-View Pro from the Windows Start menu as sample applications for accessing the PCAN-USB Pro FD adapter. For initialization of the CAN interface select the CAN channel and the bit rate. For initialization of the LIN interface select the LIN channel, the operation mode (Master or Slave), and the bit rate.

LED	Status	Meaning
USB	Green on	A High-speed USB connection (USB 2.0) with a computer is established.
	Green blinking	Communication is occurring on the High-speed USB connection (USB 2.0).
	Orange on	A Full-speed USB connection (USB 1.1) with a computer is established. The PCAN-USB Pro FD adapter is in suspend mode (only voltage supply via USB cable, e.g. during computer standby).
	Orange blinking	Communication is occurring on the Full-speed USB connection (USB 1.1).



LED	Status	Meaning
CAN1/2	Green on	The CAN interface is initialized. There's a connection to a driver of the operating system.
	Green slow blinking	A software application is connected to the CAN interface.
	Green quick blinking	Data is transmitted via the connected CAN bus.
	Red quick blinking	An error is occurring during the transmission of CAN data, e.g. OVERRUN or BUSHEAVY.
LIN1/2	Green on	There's a connection to a driver of the operating system.
	Green slow blinking	The LIN interface is initialized with a valid bit rate. A software application is connected to the LIN interface.
	Green quick blinking	Data is transmitted via the connected LIN bus.

## D-Sub connector (9 pins) for CAN/LIN

