

# FT48A-B7070 Quick Installation Guide

Document # D2313-100/ Revision 1.0

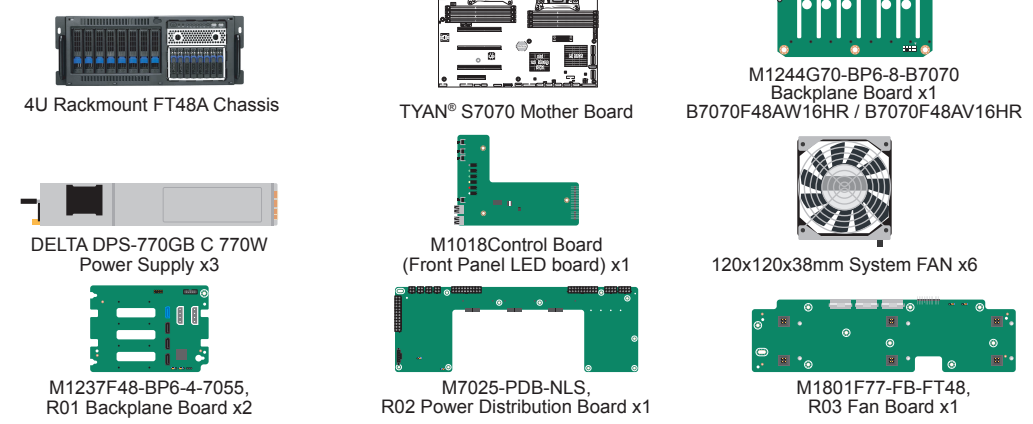


## 1 General Information

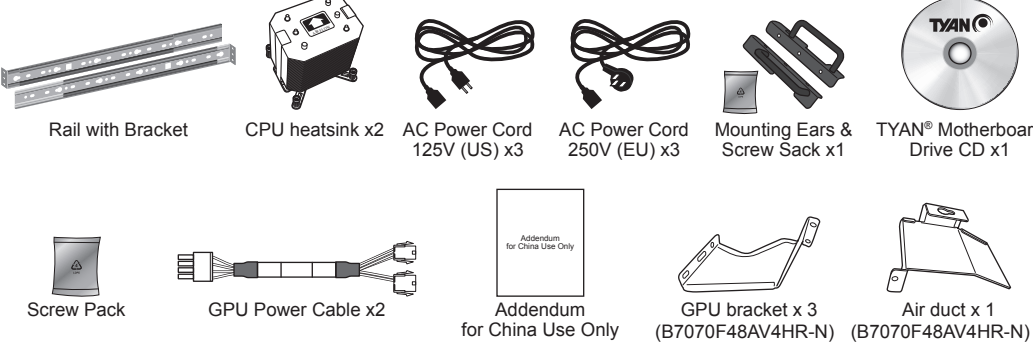
### Read Me First

1. The Barebone User's Manual is available for download from our Web site at <http://www.tyan.com>. Make sure to read all precautions and instructions before you start installing the server system.
2. Refer all servicing to qualified personnel to avoid the risk of damage to the server system.
3. Exercise normal ESD (Electrostatic Discharge) procedures during system integration. TYAN/MITAC recommends wearing gloves and an anti-static wrist strap to avoid possible damage to the equipment.
4. Current processor socket design places the pins on the motherboard instead of the processor itself. Exercise caution when installing the processors as the manufacturer's warranty does not cover damage inflicted upon the motherboard, including damage to the CPU sockets.

### Box Content



### Accessories



### Required Hardware Components

#### Minimum Hardware Requirements

To avoid integration difficulties and possible board damage, your system must meet the following minimum requirements:

- Processor: Intel® Xeon® E5-2600 v3(Haswell-EP)series CPU
- Memory Type: Support 288-pin DDR4 1.2V 2133 MHz RDIMM/UDIMM/LRDIMM
- Hard Disk Drives: 2.5"/3.5"SATA/SAS HDD
- Rack Mount Kit: FT48A 4U, 19" rack mountable

**NOTE:** The updated hardware requirements of the system please refer to the barebones user's manual on our website at <http://www.tyan.com>

### Tools Required



## 2 System Installation

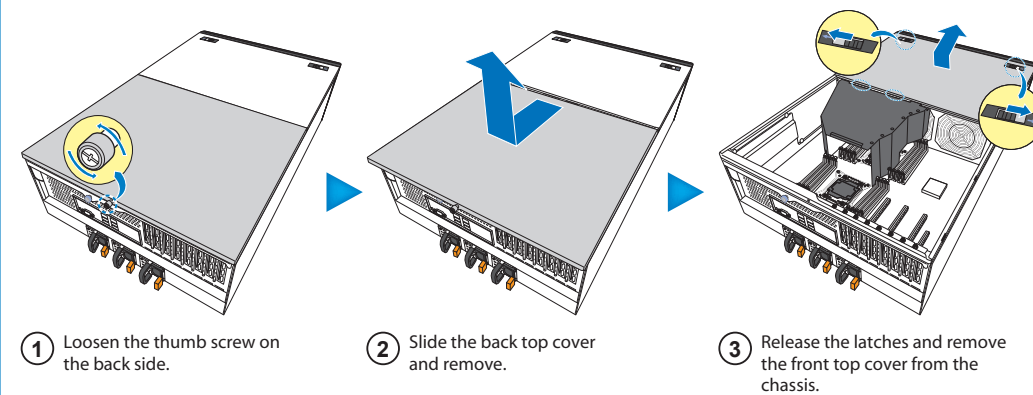


### Open the Chassis

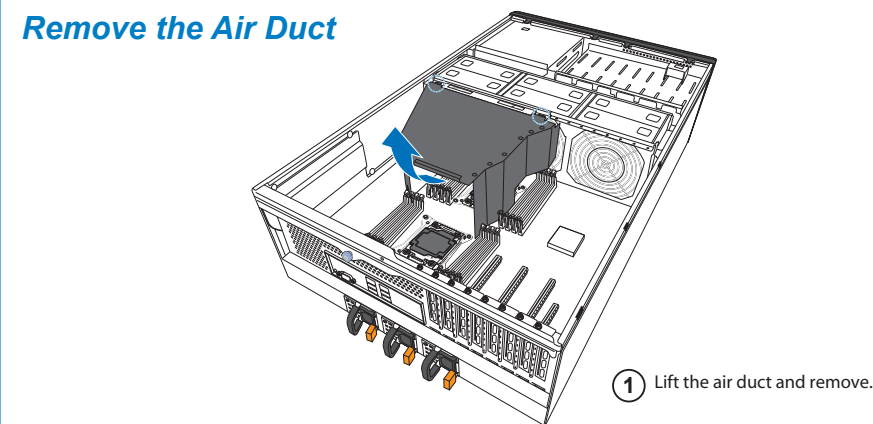
#### Preparing the Chassis

Read normal ESD (Electrostatic Discharge) procedures.

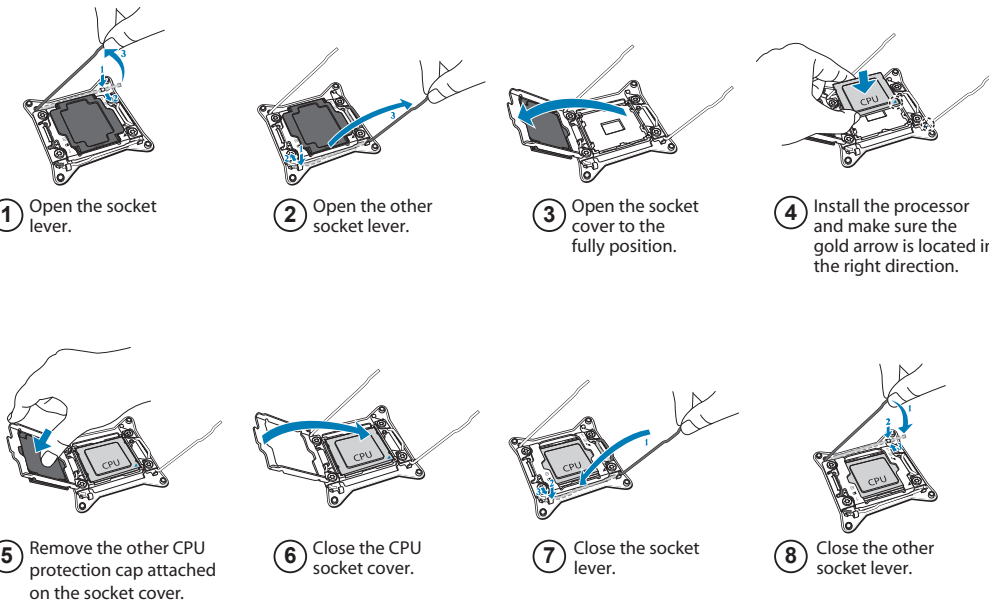
Place your TYAN® Server Chassis on a flat anti-static surface to perform the following integration procedures. Read ESD procedures before reaching inside to install components.



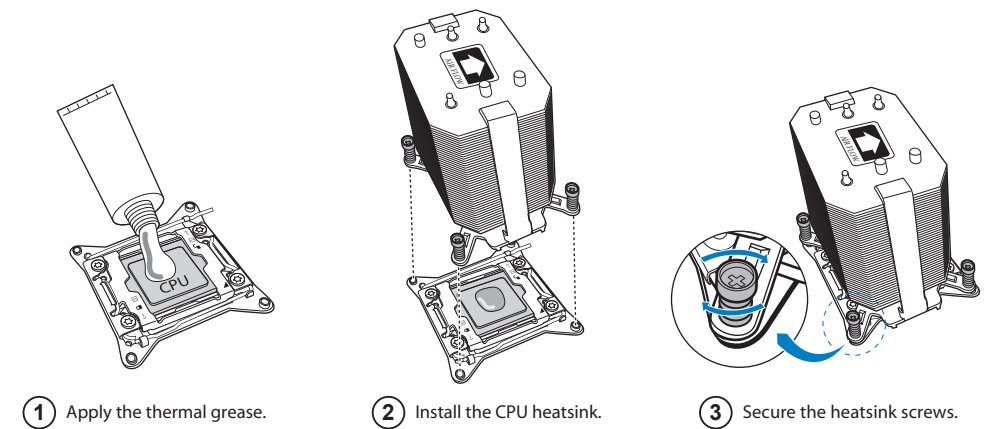
### Remove the Air Duct



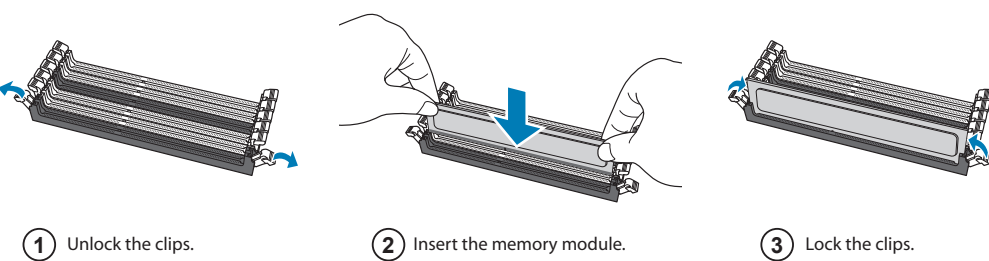
### Install the Processor



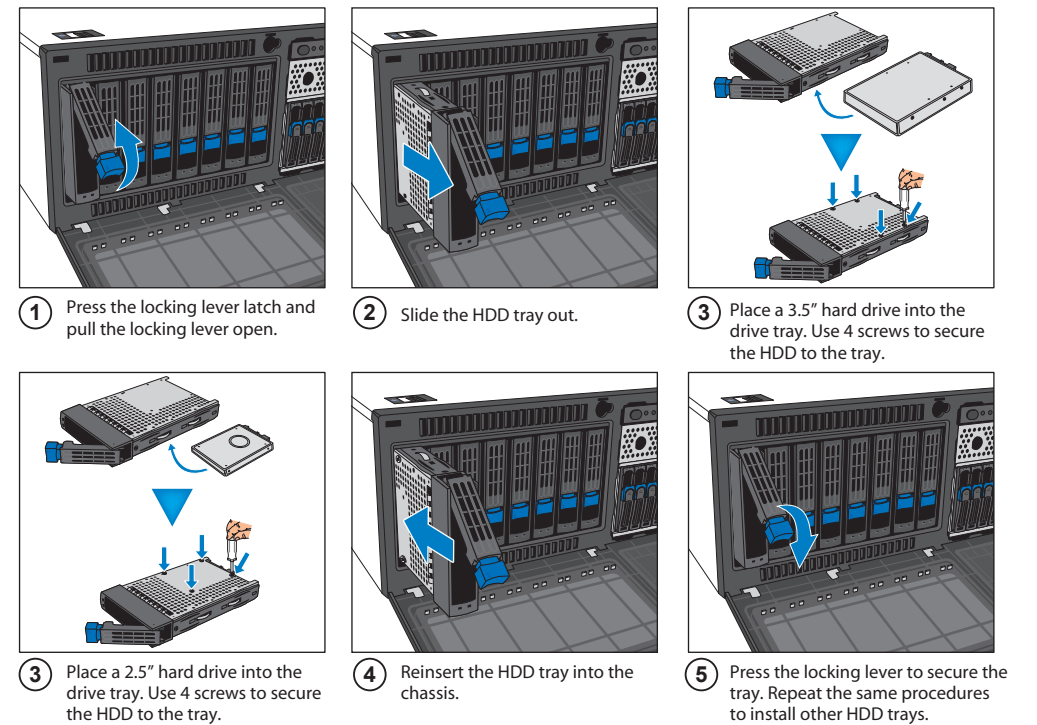
### Install the CPU Heatsink



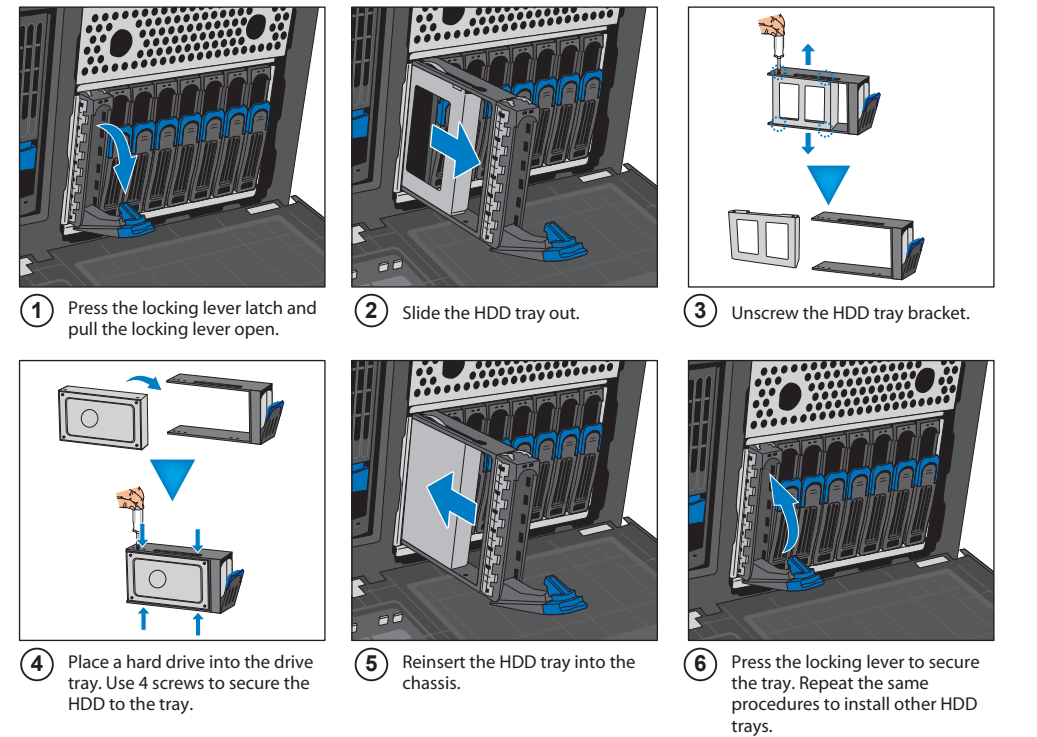
### Install the Memory



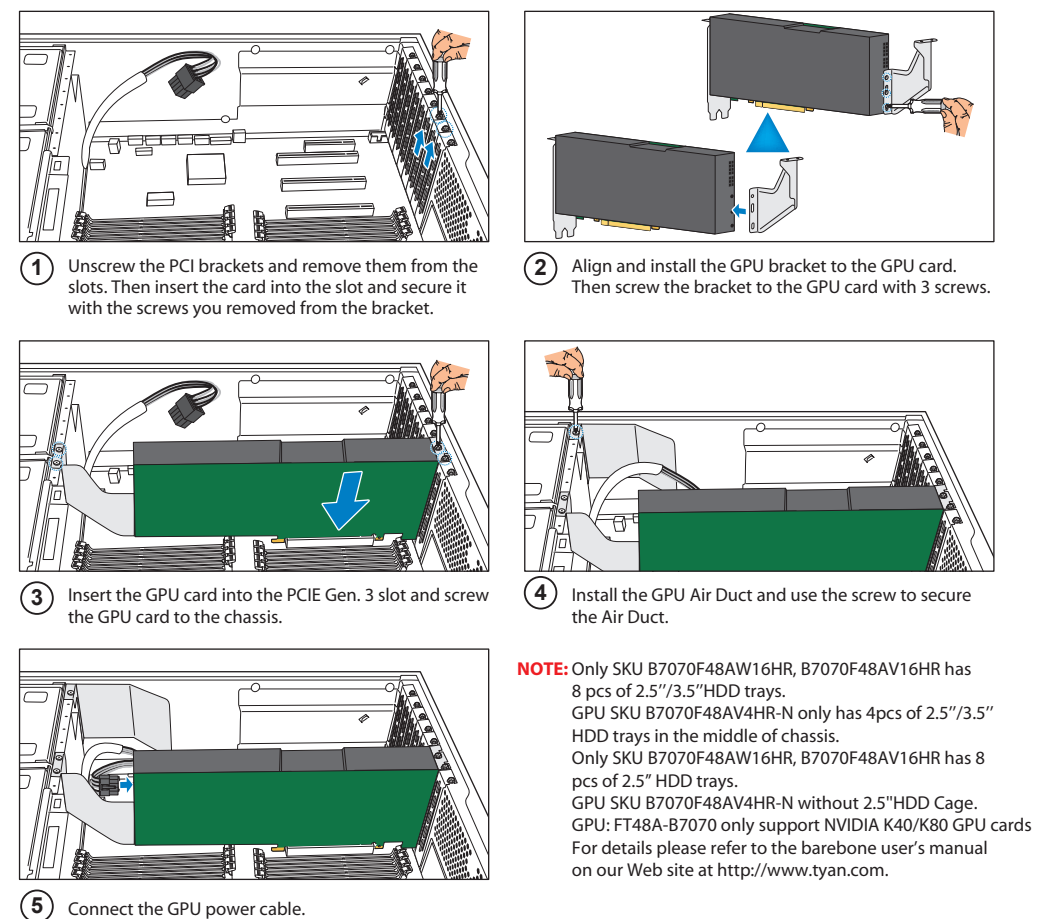
### Install the Hard Disks (3.5" or 2.5")



### Install the Hard Disks (2.5")



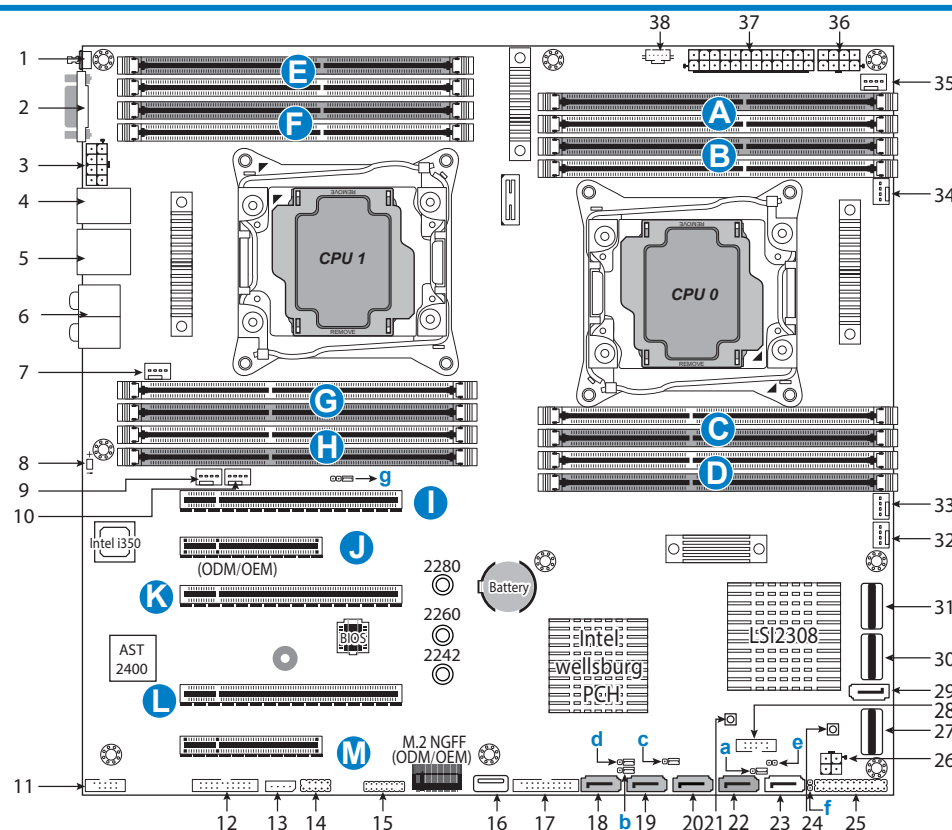
### Installing the Add-On card (Optional)



## 3 Motherboard Placement

### Motherboard Placement

**NOTE:** Only B7070F48AW16HR SKU has LSI2308 chip in S7070WGM2NR M/B.



#### CONNECTORS

1. ID-LED Button
2. VGA Port
3. 8-pin Power Connector(PW3)
4. USB2.0 ports and LAN Port #2(LAN2,share with IPMI)
5. USB3.0 ports and LAN Port #1(LAN1)
6. Audio Jack with S/PDIF
7. 4-pin Fan Connector(CPU1\_FAN)
8. ID\_LED
9. 4-pin Fan Connector (SYS\_FAN5)
10. 4-pin Fan Connector (SYS\_FAN4)
11. COM Header(COM1)
12. Front Fan Connector (FAN\_HDR1)
13. IPMB Connector (IPMB1)
14. Front USB2.0 Header(USB2\_2)
15. TYAN Module Header
16. TYPE\_A USB Header(A\_USB1)
17. Front USB3.0 Header(USB3\_2)
18. SATA3.0 Connector(SSATA3)
19. SATA3.0 Connector(SSATA2)

#### MEMORY SLOTS

- |   |                           |
|---|---------------------------|
| A | CPU0 DIMM A0/CPU0 DIMM A1 |
| B | CPU0 DIMM B0/CPU0 DIMM B1 |
| C | CPU0 DIMM D0/CPU0 DIMM D1 |
| D | CPU0 DIMM C0/CPU0 DIMM C1 |
| E | CPU1 DIMM C0/CPU1 DIMM C1 |
| F | CPU1 DIMM D0/CPU1 DIMM D1 |
| G | CPU1 DIMM B0/CPU1 DIMM B1 |
| H | CPU1 DIMM A0/CPU1 DIMM A1 |

20. SATA 3.0 Connector(SSATA1)
21. Clear CMOS Button
22. SATA 3.0 Connector(SSATA0)
23. SATA3.0 Connector(SATA5)
24. Power Button
25. Front Panel Header(FPIO1)
26. 4-pin Power Connector (PW4)
27. 4-in-1 Mini SAS Connector f/PCH(SATA0-3)
28. SGPIO Header(SGPIO2,SSATA0-3)
29. SATA3.0 Connector(SATA4)
30. 4-in-1 Mini SAS Connector f/LSI2308(SA54-7)
31. 4-in-1 Mini SAS Connector f/LSI2308(SA50-3)
32. 4-pin Fan Connector (SYS\_FAN3)
33. 4-pin Fan Connector (SYS\_FAN2)
34. 4-pin Fan Connector (CPU0\_FAN)
35. 4-pin Fan Connector (SYS\_FAN1)
36. 8-pin Power Connector(PW2)
37. 24-pin Power Connector(PW1)
38. PSIM Connector(PSIM1)

#### PCI-E SLOTS

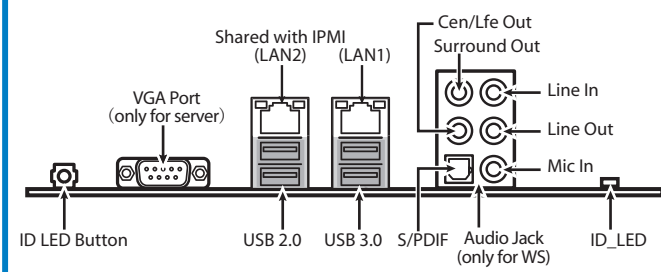
- |   |  |
|---|--|
| I | PCI-E G3 x16 slot (x8 or x16 link) (f/CPU0)      |
| J | PCI-E G3 x8 slot(x8 or x0 link) (f/CPU0) ODM/OEM |
| K | PCI-E G3 x16 slot (x16 link) (f/CPU0)            |
| L | PCI-E G3 x16 slot (x16 link) (f/CPU1)            |
| M | PCI-E G3 x8 slot (x8 link) (f/CPU1,open-end)     |

#### JUMPER/HEADER

- |   |  |
|---|--|
| a | PSU Alert Enable Jumper(3PHD_10)       |
| b | Flash Security Override Jumper(3PHD_8) |
| c | ME Recovery Mode Jumper(3PHD_4)        |
| d | LAN2 Disable Jumper(3PHD_1)            |
| e | Chassis Intrusion Header(2PHD_1)       |
| f | ID_LED Button Header(2PHD_2)           |
| g | Buzzer Disable Jumper(4PHD_12)         |

## 4 I/O Ports

### Locate the External I/O Port



## 5 Caution

### CPU Cover for DOA/RMA

**NOTE:** Please save and replace the CPU protection cap when returning the server board for service.

