

# S7045 Quick Installation Guide

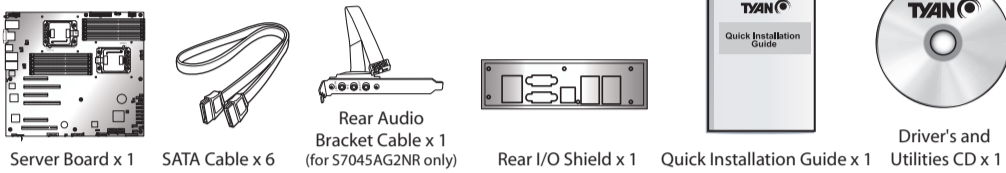
Document # D2168-100 / Revision 1.0



## Read Me First

1. The motherboard User's Manual is available for download from our Web site at <http://www.tyan.com>. Make sure to read all precautions and instructions before you start installing the server board.
2. Refer all servicing to qualified personnel to avoid the risk of damage to the server board.
3. Exercise normal ESD (Electrostatic Discharge) procedures during system integration. TYAN/MITAC recommends wearing gloves and an anti-static wrist strap to avoid possible damage to the equipment.
4. Current processor socket design places the pins on the motherboard instead of the processor itself. Exercise extreme caution when installing the processors as the manufacturer's warranty does not cover damage inflicted upon the motherboard, including damage to the CPU sockets.

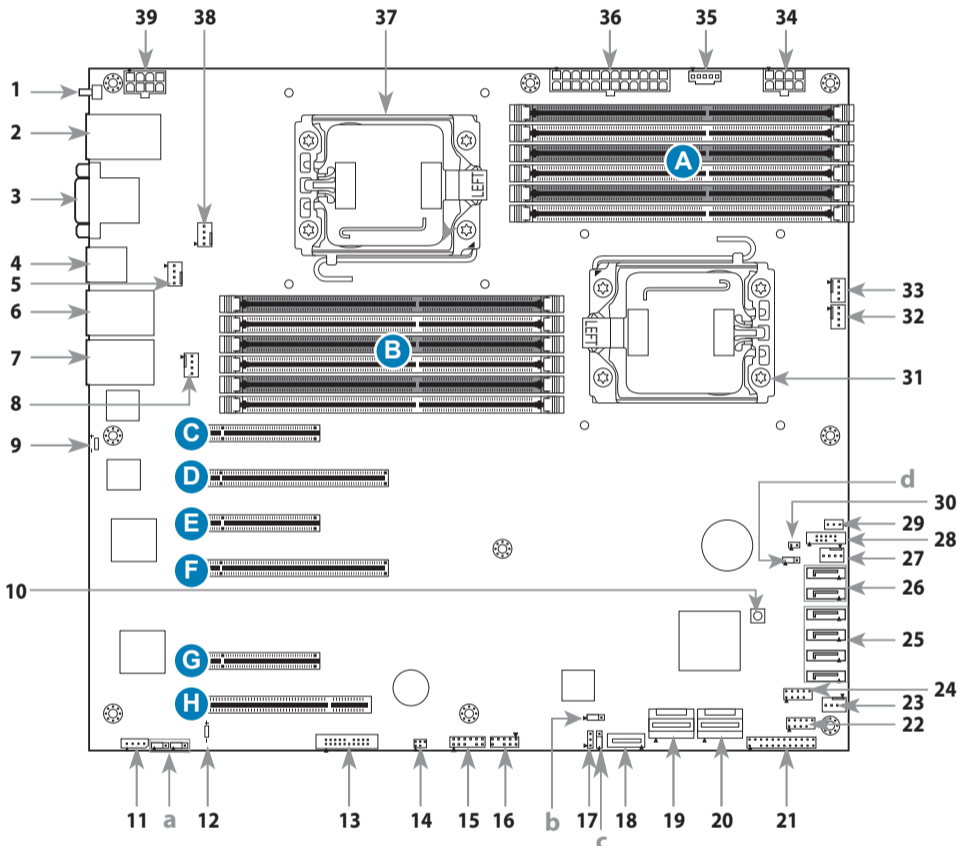
## Package Contents



## Required Tools



## Motherboard Placement



### CONNECTORS

- |  |   |
|--|---|
| 1 ID LED Button (SW2)                              | 17 SMBus Host Header (J197)                     |
| 2 LAN Port # 5 (LAN5)<br>USB 2.0 Ports             | 18 Vertical Type-A USB Connector (USB3)         |
| 3 VGA Port   | 19 Mini SAS Connector (SAS0/SATA, J2002)        |
| 4 COM1 Port  | 20 Mini SAS Connector (SAS1, J2003)             |
| 5 USB 2.0 Ports                                    | 21 Front Panel Header (J189)                    |
| 6 Fan Connector (SYS_FAN_4, J37)                   | 22 USB Front Panel Header (J57)                 |
| 7 LAN Ports #4 / #3 (LAN4/LAN3)                    | 23 Fan Connector (SYS_FAN_3, J32)               |
| 8 LAN Ports #2 / #1 (LAN2/LAN1)                    | 24 USB Front Panel Header (J56)                 |
| 9 FAN Connector (SYS_FAN_5, J38)                   | 25 SATA2.0 Connector (SATA2~SATA5)              |
| 10 ID LED (LED14)                                  | 26 SATA3.0 Connector (SATA0/SATA1)              |
| 11 Clear CMOS Reset Button (CMOS CLEAR BTN)        | 27 Fan Connector (SYS_FAN_2, J29)               |
| 12 IPMB Connector (J193)                           | 28 SATA SGPIO Header (J62)                      |
| 13 BMC Heart Beat LED (LED15)                      | 29 Patsburg Upgrade ROM Module Connector (J217) |
| 14 Front Fan Connector Reserved for Barebone (J33) | 30 Chassis Intrusion Header (J191)              |
| 15 SAS SMBus/SGPIO Header (J205)                   | 31 CPU Socket (CPU0)                            |
| 16 Rear Audio Jack Header (J213)                   | 32 Fan Connector (SYS_FAN_1, J27)               |
| 17 Front Panel Audio Header (J176)                 | 33 Fan Connector (CPU0_FAN, J23)                |

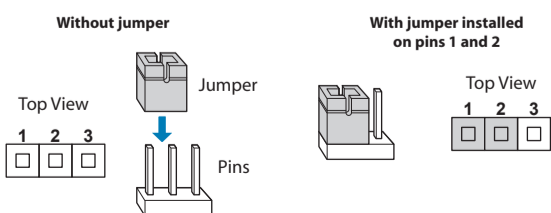
### SLOTS

- A CPU0 DIMM Slots [Channel A / B / C]
- B CPU1 DIMM Slots [Channel A / B / C]
- C PCI-E x8 slot (x8 link)
- D PCI-E x6 slot (x8 or x16 link)
- E PCI-E x8 slot (x8 link or N/A)
- F PCI-E x16 slot (x16 link)
- G PCI-E x8 slot (x4 link)
- H PCI slot (32-bit)

### JUMPERS

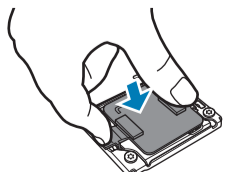
- a COM Select Jumper (J35, J36)
- b BIOS Recovery Mode Jumper (J198)
- c Flash Security Jumper (J196)
- d ME Recovery Mode Jumper (J195)

## Jumper Cap On/Off



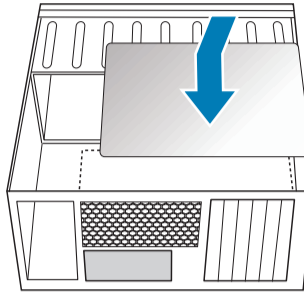
## DOA/RMA Reminder

**NOTE:** Please save and replace the CPU protection cap when returning the server board for service.

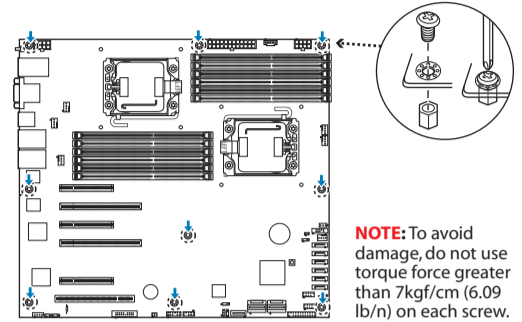


## 1 Install the Server Board

- 1 Insert the server board into the chassis.

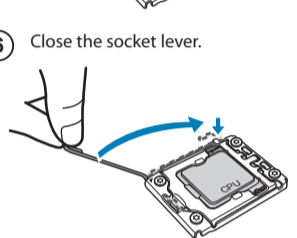
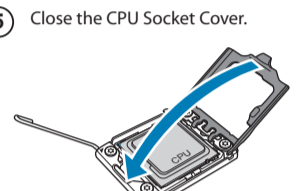
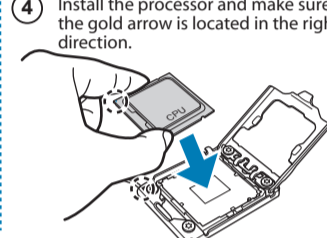
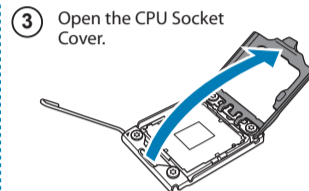
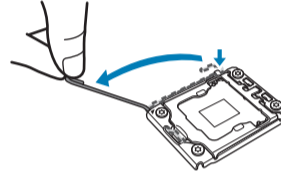


- 2 Attach the server board to the chassis by securing the screws on the designated locations.



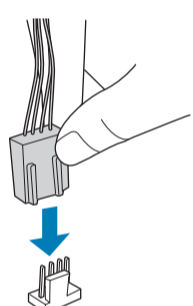
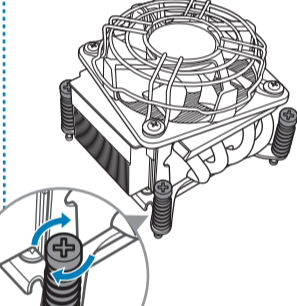
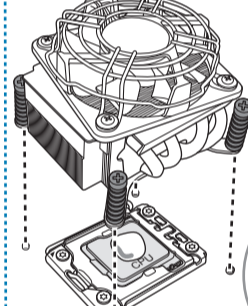
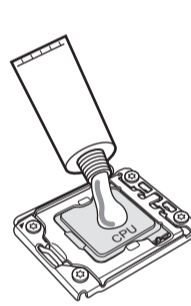
## 2 Install the Processor

- 1 Remove the CPU protection cap.
- 2 Open the socket lever.
- 3 Open the CPU Socket Cover.
- 4 Install the processor and make sure the gold arrow is located in the right direction.
- 5 Close the CPU Socket Cover.
- 6 Close the socket lever.



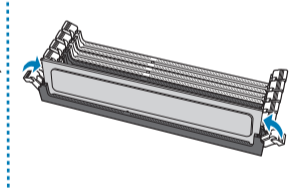
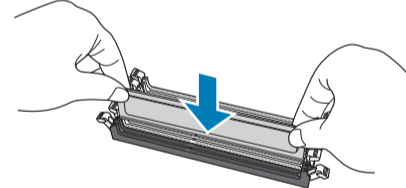
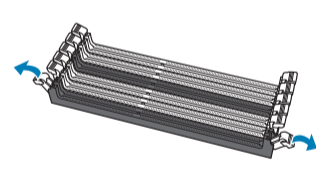
## 3 Install the CPU Heatsink

- 1 Apply the thermal grease.
- 2 Install the CPU heatsink.
- 3 Secure the heatsink screws.
- 4 Connect the heatsink fan cable.

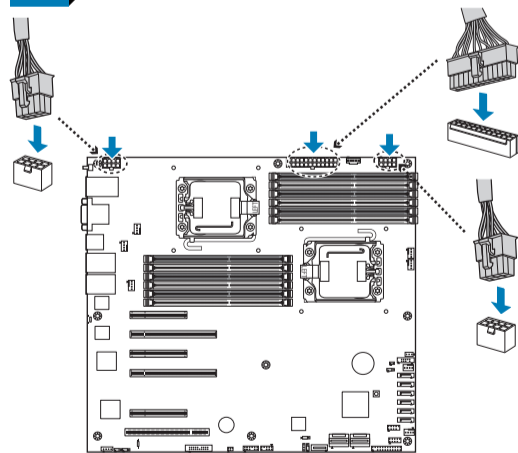


## 4 Install the Memory

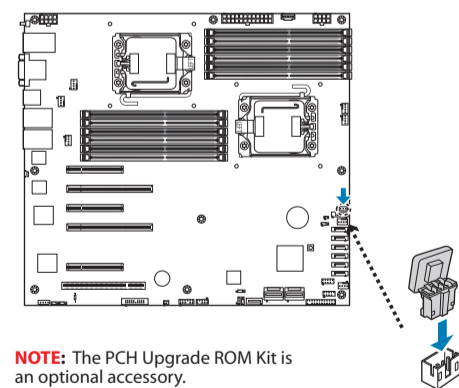
- 1 Unlock the clips.
- 2 Insert the memory module.
- 3 Lock the clips.



## 5 Install the Power Cable



## 6 Attach the PCH ROM Kit



**NOTE:** The PCH Upgrade ROM Kit is an optional accessory.

## Locate the External I/O Ports

