

Dual wavelength Laser Lipo machine with 650nm & 940nm



Chapter 1. Brief Introduction

Introduction

Laser Lipo 001 with 650nm & 940nm is the latest innovation in laser lipolysis, offering you a way to achieve inch loss and body contouring with no pain, no needles and no down time.

How does it work?

Laser Lipo emits low levels of laser energy, which creates a chemical signal in the fat cells, breaking down the stored triglycerides into free fatty acids and glycerol and releasing them through channels in the cell membranes.

Experimentally and clinically proves that by using 940nm wavelength, it could reach to adipose layer and gives a effective fat dissolving; With 650nm wavelength, it could help body to give a systemic Lymph detoxification and accelerate haemal circulation and metabolism.



Shanghai Freya Medical Technology co.,ltd

Why Laser Lipo?

- Laser Lipo is a completely safe, non invasive procedure that gives fantastic inch loss results.
- Results can be seen after just one treatment.

No surgical procedure means no recovery time.

- Treatment is painless and relaxing.
- No starvation diet.
- No side effects.
- No consumables or disposables

- **Affordable treatment**

Compared to surgical liposuction and other Ultrasound or laser techniques Laser Lipo is much more affordable with similar results.

- **Safe and Painless**

Laser Lipo uses low levels of visible red laser light to create a safe and painless bio-stimulation effect in the targeted fat tissue. This stimulation is of the normal chemical pathways which the body uses to free up energy resources when required, so Laser Lipo does not produce any abnormal effects in the body or damage body tissue such as cells, blood vessels or neighbouring nerves or vital organs. The treatment can be performed on all skin types and body areas where unwanted fat is stored and you can return to normal activity immediately after treatment.

- **Immediate results**

Results can be seen immediately after treatment. Typically a 2-4cm loss in abdomen circumference can be achieved with every treatment. A course of 8 treatments is recommended over 4 weeks with 2 treatments per week.

- **Targeted fat reduction**

Laser Lipo can target fat reduction in specific problem area. By positioning the laser pads on the target area such as chin, upper arms, abdomen or thighs fat can be broken down and removed specifically from that area. This is a big advantage over diet and exercise which can reduce overall body fat but not shape individual areas.

Chapter 2. Technical Specification



Shanghai Freya Medical Technology co.,ltd

Specification

Wavelength	650nm & 940nm
Energy Output	136*100mw
Main Power output	220v or 110v/50Hz-60Hz
Safety	On Board Diagnostics
Classification	Electrical Class 1, Type B applied part
Dimensions	50cm*48cm*44cm
Weight	30kg with flight case (59*56*47)cm
Fuse	5A
Mode of Operation	Continuns
Ingress Rating	IPXO
Environmental Requirement	50°F to 86°F Non-condensing Humidities Below 75%RH

Spare parts Overlook

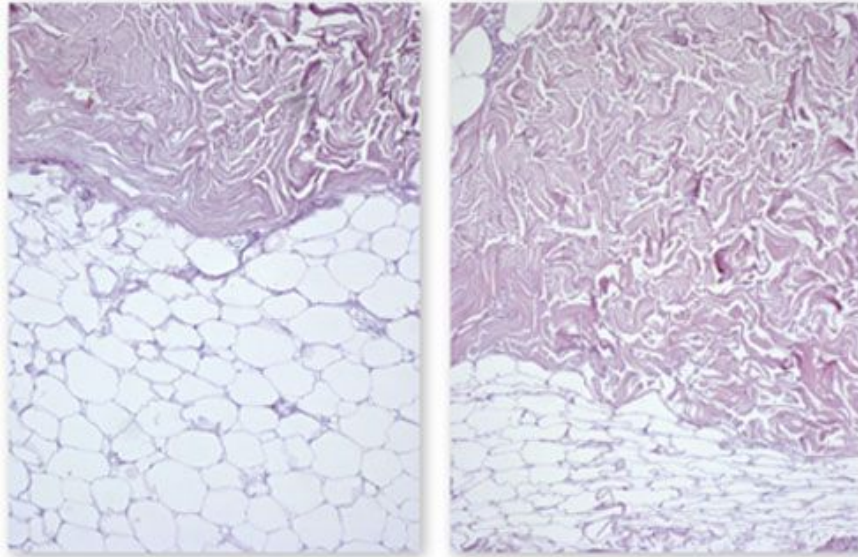


NOTE: MUST WEAR PROTECTIVE GLASSES FOR BOTH OPERATOR AND CLIENT DURING THE TREATMENT PLEASE

Chapter 3. Clinical Proven & Result

Histological Evaluation of Skin Biopsies, 40x Magnification.

Reduction in hypodermis thickness after single ilipo treatment session.



Before & After looks





Proven results



Shanghai Freya Medical Technology co.,ltd

A study was conducted on 15 patients (12 women, 3 men) during a course of eight Laser Lipo treatment sessions over four weeks. Patients all had a history of 'resistant' areas that previously demonstrated little improvement with regular exercise and diet alone. Seven subjects had treatments on the thigh, eight subjects had abdominal treatments. After five Laser Lipo treatments, a histological and biological analysis was performed. Using light microscopy and assaying glycerol collagen synthesis levels, untreated human skin explants were compared to Laser Lipo treated tissue.

Chapter 4. Installation Section

Machine ensemble stage:

1. Take out the machine, put it on a carter. See (picture 1)



picture 1

2. **Cable connection (picture 2)**, bring out the cable with each PAD and connect to indicating number. **Please see picture 3 in next page**

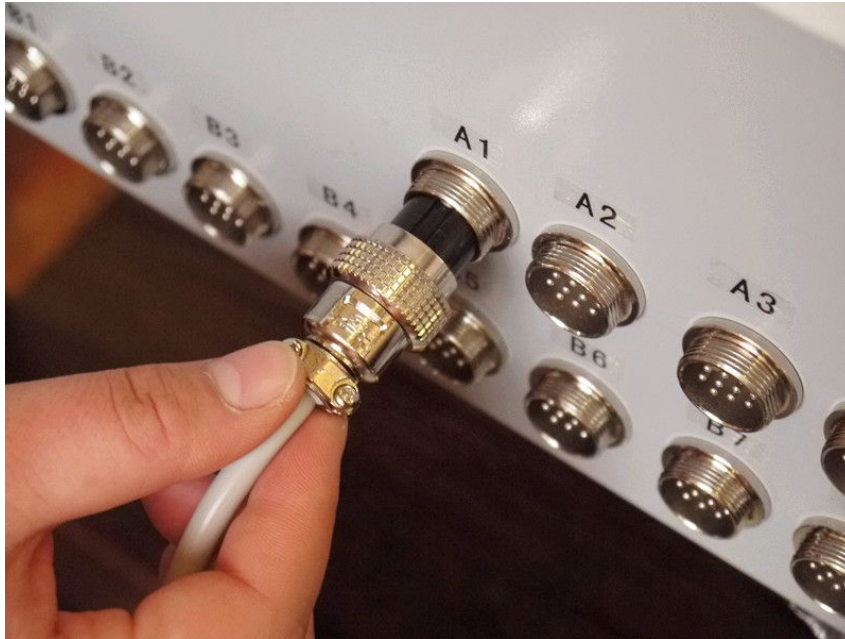


picture 2



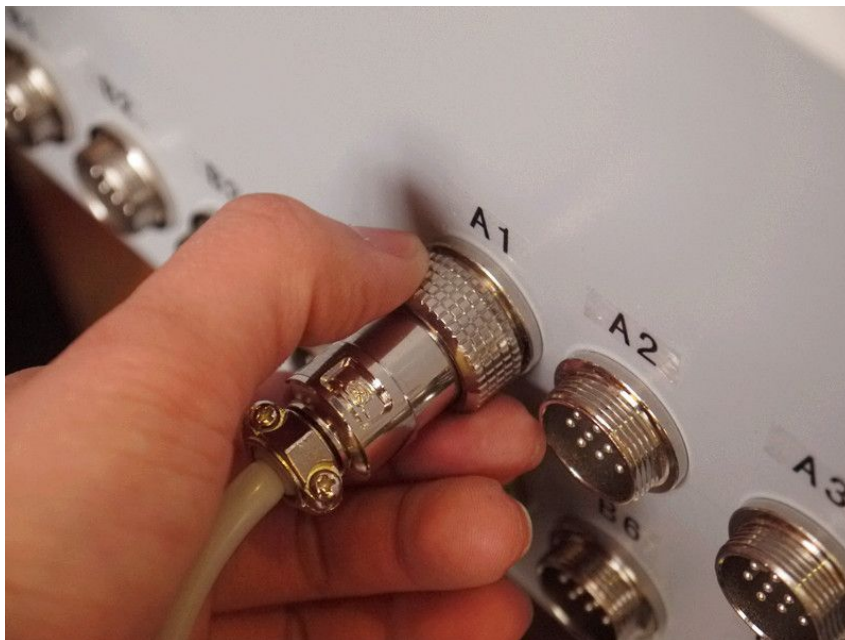
picture 3

3. Connect each PAD's cable in a correct hole(see picture 4)



picture 4

4. Screw tight the ring (see picture 5 in below)



picture 5

5.Completion Looks (see picture 6)



Shanghai Freya Medical Technology co.,ltd



picture 6

6. Side Holder for other 4 big PADS (see picture 7 in below)



picture 7

7. Screw the side holder onto machine (see picture 8)



picture 8

8. Power supply connection, need to push into the socket (see picture 9-10 in below)

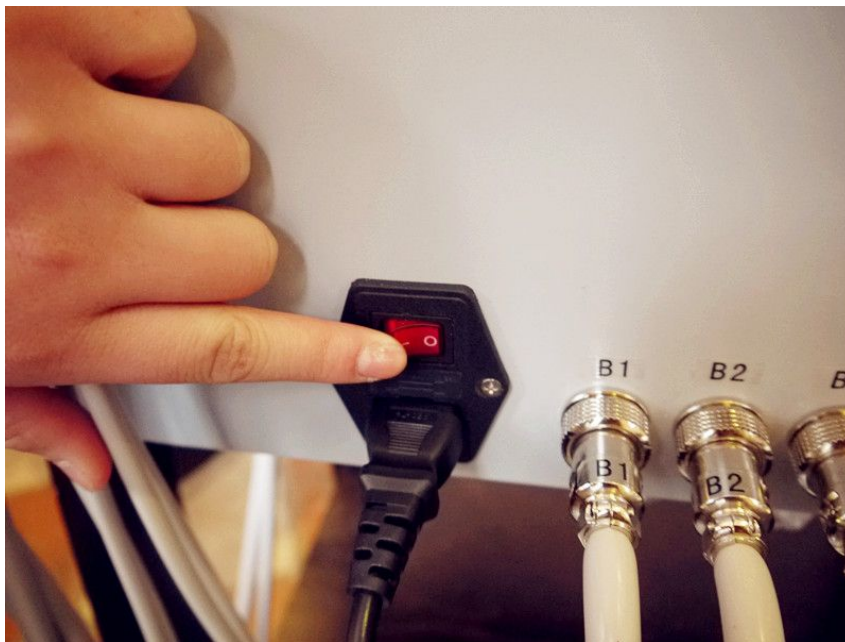


picture 9



picture 10

9. Switch on the RED BUTTON to left "-" as 'ON" (see picture 11 in below)



picture 11

10. Back to the front of the machine, start the KEY, turn to right for "ON" (see picture 12)



picture 12

Chapter 5. Operating Section

Operating Instruction

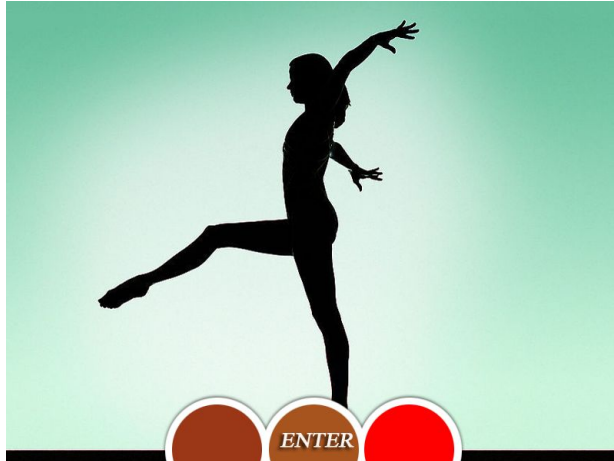
1. Connect to the power supply, switch on the Key, machine will be running and the below picture will be shown as the opening screen, touch the screen into the next stage.(note: this page design to add client's logo)



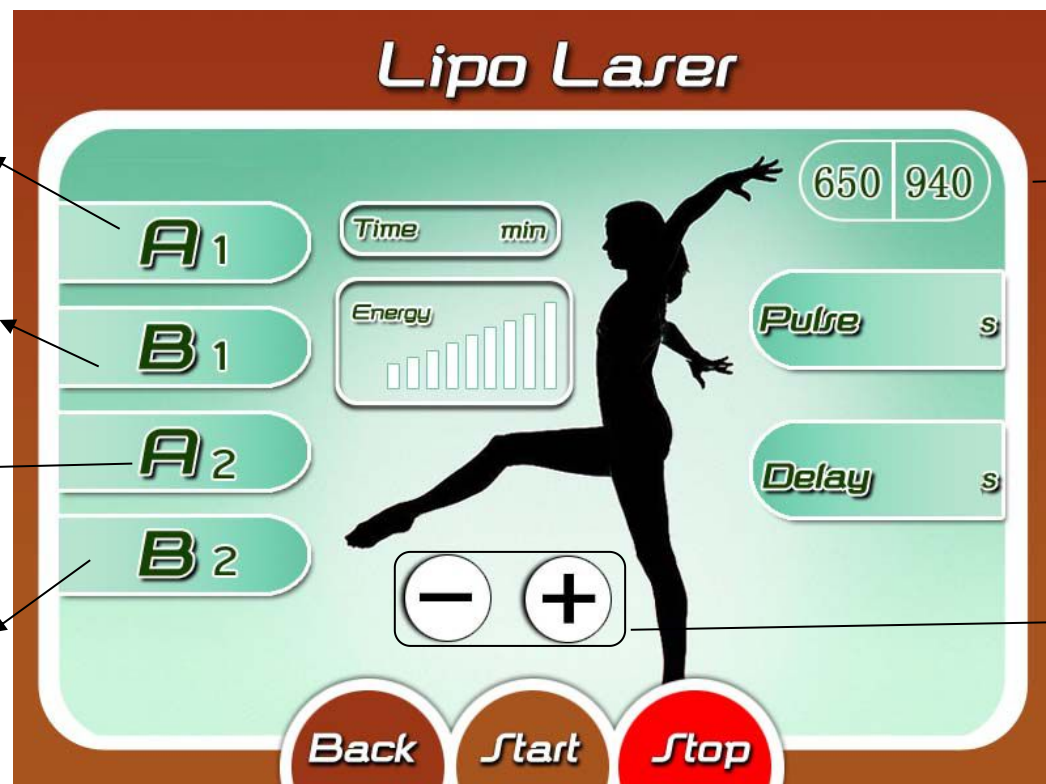


Shanghai Freya Medical Technology co.,ltd

2. The second interface will be shown as the below picture, please press ENTER for next page. (Note: it could add for client's needs with different language selection)



3. In the operating page, "**A1**" stands for 2 small paddles (A1, A2); "**A2**" (A3, A4) "**B1**" stands for 4 big paddles (B1,B2,B3,B4) "**B2**" stands for (B5,B6,B7,B8) Pulse and Delay could be adjusted customarily. "**650/940**" stands for two wavelength.



2 small
Paddles
(A1,A2)

4 big
Paddles
(B1,B2,B3,
B4)

2 small
Paddles
(A3,A4)

4 big
Paddles
(B5,B6,B7,
B8)

650nm
940nm

Adjusting
level of
Energy, Time,
Pulse and
Delay time.

Button is Unselected (PICTURE 1)



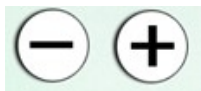
Button is selected (PICTURE 2)

To press **"A1, A2, B1, B2"** it will be highlighted, to press **"time"** then press



to adjust the treatment time;

And samely, to adjust **"Energy" "Pulse"** and **"Delay"** will be the same as



press After every parameter is set up then press **Start** button to start the treatment.

NOTE: 12 PADS could be working in the same time, or separately depends on how many PADS are been applied on customer's body.

PLEASE FOLLOW THE CONNECTION INSTRUCTION CAREFULLY AND DO NOT TAKE OUT THE CABLE DURING THE TREATMENT.

PLEASE DO NOT STRETCH THE CABLE INTENSIVLY DUE TO THE CABLE LINE MIGHT BE LOOSE OR CUT OFF DURING THE TREATMENT.



Shanghai Freya Medical Technology co.,ltd

NEED TO PROTECT EACH CABLE IN A GOOD CONDITION.

REMEMBER TO SWITCH OFF THE RED BUTTON ON POWER SUPPLY SOCKET AT THE END OF THE DAY.

Clinical Parameter Adjustment

	Energy Level	Pulse (s)	Delay (s)
Stomach	6	1	0.2
Buttocks	7	1	0.3
Arms	5	0.8	0.2
Thighs	7	1	0.2
Calves	6	0.8	0.2
Neck	4	0.6	0.3
Back	6	1	0.2
Chin	3	0.3	0.2
Baby Buldge	3	0.3	0.2

Please note: the parameter is an average figure and it is changeable depends on different client.

The range of the setting:

Delay set:0-5s Pulse set: 0-5s Energy Level set: 1-9

Treatment time set: 10-30min for one treatment (it depends on which parts of body is applying with). First 15-20min with 940nm and then 15-20min with 650nm

Treatment course: 8-10 treatment per month, 2 treatments per week

Procedure:

- Before any treatments please refrain from eating a large meal and avoid caffeine and alcohol at least 3 hours before.
- Shower before treatments and make sure no cream or perfumed products have been applied to the skin for at least 24 hours before.
- Don't need to put any of gel or essential oil onto body, just need to be sure that parameter is adjust to the suitable level for different client.
- Suggest using 940nm first for far dissolving, then 650nm for consolidating.



Shanghai Freya Medical Technology co.,ltd

Pls note:

1. Off procedure: when one session is over and wont need more treatment,



pls first press then and then turn off machine.

Pls don't turn off key switch suddenly.

2. Pls don't touch two places of the screen at the same time.

3. Pls don't adjust the Delay at "0".

4. Pls don't push the tubes which connect the pads too harder or let the pads touch water or any liquid similar.

5. Pls don't unplug the pads when machine is on.

Contraindications:

1. Pregnant and in the menstrual period women are prohibited use in abdomen

2. such as fever, suffering from infectious and acute disease

3. People who have heart disease, con-fiq heart pacemaker, severe high blood pressure, cancer disease, deep vein thrombosis, varicose veins , goiter, cancer, epilepsy . Do not use this machine.

4. People who have hemorrhagic disease, trauma, vascular rupture, skin inflammation, skin disease patients and pregnant women are not be OK to use this machine.

5. People who have immune system dysfunction, over-sensitive to the current person can not use this device

6. If feeling unwell, do not use this device. Prohibited in the ears, nose, eye, and throat.

7. People who have the body buried in hearing aids, heart pacemakers, artificial hearts and other around medical electronic devices are banned to use.

8. Children under 12 years old are not allowed.

Chapter 6

DAILY MAINTAINING AND AFTER SALE SERVICE



Shanghai Freya Medical Technology co.,ltd

Warning: Ten minutes later turn off the equipment, you draw the pin of power supply to vindicate the machine. Do not leave the machine with the cover board opened up and no attendance. Or it can harm human being or the machine itself.

3.1 Protective Maintenance

The preventative maintains should be taken by our authorized staff.

3.2 To Clean and Maintain introduction

- 1) Clean machine's body everyday
- 2) Use Medicinal alcohol to clean each heads. Make sure each head are clean and dry.
- 3) Machine must be sun protected and do not shake or move around.
- 4) Keep a cooler air condition in a room.
- 5) Machine needs 30mins break after 3-4hr operating.

3.3 After sale service

3.3.1 Warranty time

Our company provides twelve-month warranty for the units include the power, capacitor, touch-screen, and main board. We guarantee the Probes lifetime is **8,000hours**, and warranty begins effect from Purchase day.

3.3.2 Warranty range

If the equipment is in warranty period, our company will provide free repair or replacement, other non-normal use and irresistible factors is not in warranty.

3.3.3 Limited warranty

- 1) Users enjoy free warranty service in warranty period.
- 2) If the product is damaged in transit due to improper packaging when you return, the unit will be in voided warranty
- 3) Repaired unit still enjoys the original warranty time and service; the replacement enjoys three months warranty from maintenance day if less than



Shanghai Freya Medical Technology co.,ltd

three months of the warranty deadline.

4) After the replacement the defective parts belong to our company.

5) The user should be responsible for the security of data; our Company does not undertake responsibility of damage or loss of data, programs or removable media.

company does not reissue the warranty card and purchase invoices.

7) If the damages belong to any conditions in below, our company will not be responsible and the unit is not in warranty.

a. damages resulting from fires, earthquakes, acts of third party's action, the customer's intent ,misuse unpredictable events, and other abnormal conditions.

b. damages resulting from other using methods out of this user manual provided.

c. Others include: situations the company can not control; problems caused by using other company's accessories, replacement for spare parts, or accepting unauthorized modification or service; misuse, abuse, operation, maintenance or illegal dismantling

not in accordance with the instructions.

d. damages caused beyond stipulate working environment including excess workload.

e. damages caused by improper storage(such as rodents, liquid penetration, etc.)

f. damages caused by use of self-compiled or non-public offering process.

3.4 Questions &Answers

Q1. How many treatments will I need?

A1. We recommend 2 treatments per week for 4 weeks.

Q2. Can I have more than one course?



Shanghai Freya Medical Technology co.,ltd

A2. Yes but it is essential to have a two week gap between courses.

Q3. Can I have more than one area treated at one time?

A3. Yes if you are prepared to do more cardio vascular exercise.

Q4. Will the inches stay off after a treatment?

A4. If you maintain a healthy diet and exercise routine then yes.

Q5. What actually happens to the fat?

A5. The fat cells are undamaged, but due to the reaction of the laser light on the cell it will empty the contents. The contents consist of Water, Glycerol and free fatty acids. Following a treatment the Glycerol or sugar is rapidly absorbed by the body. The water carries the free fatty acids, through the lymphatic system, through the kidneys and are then passed out of the body in your urine.

Q6. Does the treatment hurt?

A6. No. There is no pain at all.

Q7. Will I have to keep coming back to keep my results?

A7. The answer will be dependant upon your lifestyle.

Q8. What exercise should they do following an inch-loss treatment?

A8. Any cardio-vascular exercise adjusted for each clients fitness level, such as; running machine, swimming, power walking, etc. It is important to check the clients age and fitness level before suggesting any exercise. Whichever exercise is chosen must get the heart rate up to the point of perspiring.

Q9. Why do some people achieve better results than others?

A9. All Laser Lipo Inch-loss treatments are not a miracle cure. However we



Shanghai Freya Medical Technology co.,ltd

achieve fantastic results more so with the clients that follow the advice of a sensible diet in addition the more exercise you can do the better the results.

Q10. How can I monitor my results?

A10. At every session you will be weighed and measured and you will be photographed before your first treatment and following your last.

Q11. Client is reluctant to do cardio work or change diet?

A11. Do not sign them up for the course, as they will not gain from the treatment. After eight sessions with no visible loss it is quite likely they will want a refund. The importance of cardio-vascular exercise must be stressed to the client prior to commencing the course.

Q12. My client is putting inches back on between visits why?

A12. There are potentially three reasons for this:

1. Over eating or drinking
2. Under eating
3. Not exercising enough within 12 hours post treatment.

Q13. Can the client lay on the lymph probes?

A13. Yes, for some treatments it is necessary.

Q14. How do I know if the client is photosensitive to the treatment?

A14. Within the consent form you must ask what medication they are on. Normally a client will be aware if it is a photosensitive medication (It will be clearly stated on the container). If in doubt either ask their doctor or check online.



Shanghai Freya Medical Technology co.,ltd

Q15. Can I do under the eyes?

A15. NO! Never take the laser above the cheek bones.

Q16. Must I wear laser glasses?

A16. Protective glasses/goggles should be worn at ALL times.

Q17. How long will the treatment take?

A18. Treatments take between 10 and 40 minutes dependant upon what system is being used. All systems work equally.

Q18. Can I treat a person that has a contraceptive coil fitted.

A19. Yes. The laser does not penetrate deeper than 13mm.

Q19. Is it fit to men?

A20. Yes