

Nikon 1



I AM | **THE NIKON 1**



I AM THE NEW ADVANCED CAMERA WITH INTERCHANGEABLE LENSES

At the heart of the image





I AM | THE INTEL LIGENT CAMERA

Nikon 1 A new way to capture the speed of life

It's not like life is going to slow down anytime soon. Sometimes you have to change your game to get ahead of the crowd. So we designed a camera that could record your life in a whole new way, no matter how fast it moves.

The result is Nikon 1—an intelligent camera system crafted to bring new levels of speed, simplicity, and enjoyment to the way you capture your world.

Astonishingly fast, stunningly compact, and amazingly precise, our Nikon 1 cameras put the power to shoot impressive stills and movies right into the palm of your hand.

Exceptionally intuitive to use, the cameras offer fully automatic operation.

Equipped with the fastest autofocus system¹ and a high-speed image processor, they ensure the best possible shots in any situation.

Built to let you capture results you would never have believed possible, they can start recording images before you fully press the shutter button and continue after you've clicked.

And we didn't just focus on the new. In fact, when it came to crafting the cameras' 1-mount system, we drew on more than 50 years of expertise.

The 1-mount is what allows you to use the Nikon 1 system's range of interchangeable 1 NIKKOR lenses. Engineered to ensure each lens communicates perfectly with the camera, the 1-mount enables still image and movie recording without compromise.

1 Among digital cameras with interchangeable lenses as determined by Nikon performance tests. Measured when using the single-point AF mode and the shortest focal length of a standard zoom lens (1 NIKKOR VR 10-30mm f/3.5-5.6), as of June 1, 2012.

Table of contents

The Nikon 1 interchangeable lens camera system: I AM THE INTELLIGENT CAMERA	2
Meet the engineers behind Nikon 1	6
Ease of use: Simplicity defined	8
Groundbreaking automatic shooting modes	9
The Nikon 1 cameras	
Nikon 1 V1: Portable power, incredible speed	10
Nikon 1 J2: Fast. Creative. Simple.	12
Image quality: Super high-speed AF CMOS sensor with the fastest autofocus system in the world	15
Image processor EXPEED 3: Fast just got faster	16
Motion Snapshot: Bring your stills to life in a click	17
Smart Photo Selector: One shot—five great images to choose from	18
Continuous shooting mode: Action at 60 frames-per-second	19
Advanced movie mode: Made with moviemaking in mind	20
Creative mode: See things differently	21
1 NIKKOR lenses	
1 NIKKOR 11–27.5mm f/3.5–5.6: Super-slim and ready to go	22
1 NIKKOR VR 10–30mm f/3.5–5.6: Moments just the way they were	23
1 NIKKOR VR 30–110mm f/3.8–5.6: Zoom in close	24
1 NIKKOR 10mm f/2.8: Go wide and stay sharp	25
1 NIKKOR VR 10–100mm f/4.5–5.6 PD-ZOOM: Movie shooter	26
Nikon 1 System Accessories	
Mount adapter: A world of possibilities	28
Speedlight flash: The right light	28
GPS unit: Tag your images	29
Waterproof case: For undersea adventures	29
Camera grips: Hold on tight	29
Nikon 1 Kits: Kit yourself out	30
Accessories overview	32
1 NIKKOR technical specifications	33
Nikon 1 V1 technical specifications	34
Nikon 1 J2 technical specifications	35

Meet the engineers behind Nikon 1

We spoke to the engineers who created our new camera system and asked them what Nikon 1 means to them. This is what they had to say...

“If someone takes a surprisingly good photo, they’re more likely to enjoy it and share it, which will inspire others to take, enjoy, and share more photos. That’s the domino effect we wish to create with this camera.”

Masayo Iida
(Short Movie Creator/Software Project Planning)

“To create the 1 NIKKOR lenses, we had to imagine what the camera system of the future should be. In other words, we had to start from scratch.”

Keiji Moriyama
(1 NIKKOR Lens Development)

“I think Nikon 1 will change the way we think about photos and movies. It’s so easy and enjoyable that it will become part of our everyday lives.”

Akira Nojima
(Nikon 1 Product Design)

“Nikon 1 cameras are so incredibly portable that carrying two lenses is no problem. Also, the shutter sound is silenced, so it’s perfect for any formal situation. I would definitely use this camera to take photos of my family, and for my hobby of photographing trains.”

Noriyoshi Tachikawa
(Super High-Speed AF CMOS Sensor Development)

“Our biggest challenge was how to incorporate such a powerful engine and sensor into the sleek, minimalist design ... but we did it.”

Shigeki Yagi
(Nikon 1 V1 Mechanical Design Architect)

“Good photos boil down to composition, timing, and the correct settings. Nikon 1 cameras do it all. They’ll help people enjoy photography because every photo will turn out just as they’d hoped.”

Hideo Hoshuyama
(Imaging/Image Processing/Image Quality Development)

“I would put the speed to good use by capturing the changing expressions on my children’s faces as they play.”

Kazuharu Imafuji
(EXPEED 3 Image Processing Engine Development)

“Nikon 1 redefines photography. It introduces the concept of manipulating not just light, but also time. With a Nikon 1, you can actually go back in time and see those few moments before, or after, a photograph was taken.”

Masahiko Inoue
(Product Planning)

“I think Nikon 1 is a camera capable of new things, offered by no other camera in the world: one of those things is Motion Snapshot.”

Naoki Kitaoka
(Development and Design Concept)

“We wanted people to be able to capture the story around a moment, without complicating the process of taking a photo. Motion Snapshot makes that possible.”

Takashi Kuriyama
(Motion Snapshot Development)

“I flatter myself in thinking that we created particularly pleasing hues for the red and silver models. I like the red model best. Doesn’t it have a lovely feel?”

Seiji Suzuki
(Nikon 1 Production Technology:
1 NIKKOR VR 10–30mm f/3.5–5.6)

“This is the world’s fastest autofocus system. People will be able to take shots they didn’t believe were possible.”

Hiroaki Takahara
(Advanced Hybrid AF System Development)

“I’m fascinated by the Smart Photo Selector. I helped develop the algorithms for it, so naturally I was thrilled when it was installed. As a photographer myself, I can’t wait to take continuous photos of my two 10-year-olds. I look forward to not missing a shot.”

Akihiko Takahashi
(Imaging/Image Quality Development)

“Nikon 1 has completely changed my view of cinematography—it’s so easy to shoot moving targets that used to vanish from the frame.”

Koshi Yoshibe
(Mechanical Design for 1 NIKKOR Lenses)





Simplicity defined

With a Nikon 1 in your hand, capturing great images will become second nature in no time at all.

Ergonomically designed for comfortable handling and intuitive operation, these intelligent, fully automatic cameras let you shoot any scene with ease.

Their sleek bodies boast minimal buttons, so it's easy to become familiar with which ones to use and when.

The clear menus feature large, easy-to-understand icons that make it simple to navigate between different functions. A conveniently placed mode dial on the back of each camera offers instant access to a range of clever automatic shooting modes.

Groundbreaking automatic shooting modes

Nikon 1 shooting modes have been developed to offer results that will amaze you and anyone who sees them.

Smart Photo Selector (SPS) captures the perfect moment in any scene and Motion Snapshot (MSS) brings a photo to life in just one click.

Movie mode opens up a host of advanced movie functions, including the chance to take a high-resolution photo while filming a movie.³

Still image mode will make you a master of movement as you switch to shooting sharp shots of the action at up to 60 frames-per-second.²

² When shooting full-size images with the Nikon 1 J2, you can shoot at approx. 60 fps for up to 12 frames. With the Nikon 1 V1, you can shoot full-size images at approx. 60 fps for up to 30 frames. Focus mode for both cameras is set at AF-S; focus and exposure for the first frame is fixed.

³ Full-resolution images approx. 8.3 megapixels [3,840 x 2,160 pixels, 16:9] can be captured during movie recording.

Nikon 1 V1

Portable power, incredible speed

If you've been waiting for a brand-new photographic experience—this is it. Built from the ground up to offer still image and movie recording without compromise, the incredibly portable Nikon 1 V1 will propel your photography forward in ways you could never have imagined.

With the fastest autofocus system (AF) in the world,¹ unique shooting modes, brilliant low-light performance, and a high-resolution electronic viewfinder, this camera boasts all you need to capture standout stills and movies.

Quick enough to capture the unexpected, the groundbreaking advanced hybrid AF system instantly switches between phase-detection AF and contrast-detect AF to deliver razor-sharp results in any situation. Phase-detection AF, which focuses accurately and quickly on moving subjects, is available during movie recording.

The high-speed image processor enables a quick shot-to-shot turnaround and powers shooting speeds of up to 60 fps.²

The camera's clever shooting modes let you shoot scenes as never before, and the electronic viewfinder offers 100 percent frame coverage, even when filming.

Every one of the compact 1 NIKKOR lenses boasts high-quality optics and is optimized for movie recording. When you want to use your favorite NIKKOR D-SLR lens,⁴ you can do so via the F-mount adapter that attaches to the camera's 1-mount, and the camera's multi-accessory port gives you the freedom to expand your system further.

Available in an iconic black or white body, the Nikon 1 V1 may be small, but it's a veritable powerhouse of imaging innovation.

I AM

CHANGING EVERYTHING



⁴ For accurate information about compatibility with F-mount NIKKOR lenses, please refer to the manual.

I AM 1 CLICK AHEAD



Nikon 1 J2 Fast. Creative. Simple.

Life's at its best when you live it in the moment. So how about a camera that's quick enough, clever enough, and creative enough to capture the fun in your world, without missing a beat?

Designed to think fast and act even faster, the intelligent Nikon 1 J2 joins the Nikon 1 range to ensure you stay a click ahead of the action.

Equipped with everything you need to capture photos and movies in exciting new ways, this camera keeps up with the way you want to record your world. Operation is simplicity itself. No matter where you might be or what you might be doing, you get the best possible results every time.

With an Advanced Hybrid AF (autofocus) system that boasts the quickest phase-detection AF in the world¹, this camera can capture superb images of split-second moments. Whether you're shooting photos first thing in the morning, movies under the midday sun, or photographing and filming after dark, the large image sensor delivers consistently brilliant results; and a built-in pop-up flash offers extra light when you need it.

Unique ways to capture your images include groundbreaking Nikon 1 functions such as Motion Snapshot and Smart Photo Selector, while the easy-to-use Creative Mode lets you add filters and effects to photos before you shoot.

Menus are easy to read and simple to navigate, and the easily reachable mode dial on the back of the camera offers quick access to all the camera's shooting modes. The bright LCD screen enables crystal-clear shooting and playback, so you can see every detail of your photos and movies—indoors or out.

Available in a range of colors with compact 1 NIKKOR lenses to match, the clever Nikon 1 J2 ensures you'll always be ready to capture images you never would have believed possible.



Nikon 1 V1 • Lens: 1 NIKKOR 30–110mm f/3.8–5.6 • Focus Mode: AF-A • Aperture: f/4 • Shutter Speed: 1/200 s • Exposure Compensation: 0 EV
ISO Sensitivity: Auto (ISO 800) • White Balance: Auto • Picture Control: Vivid

Super high-speed AF CMOS sensor with the fastest autofocus system in the world¹

Whether you want to shoot fast movement, slow movement, or no movement, Nikon's all-new super high-speed AF CMOS image sensor ensures you'll always capture superb high-resolution stills and movies.

Developed to offer the ideal balance between speed, light sensitivity, resolution, and depth-of-field, Nikon's CX-format sensors let you shoot clearer action shots, better images in low light, and easily soften backgrounds to make your subject stand out more.

Equipped with a revolutionary hybrid autofocus (AF) system that boasts the quickest phase-detection AF¹ and most focus points in the world,⁵

your subject will always be in focus.

If you're shooting shiny or moving subjects, the sensor will switch to phase-detection AF.

If your subject is stationary, or poorly lit, it will opt for contrast-detect AF. And whichever system it chooses, the quick shot-to-shot turnaround gives you the freedom to shoot moments as they unfold without worrying about a thing.

⁵ Among digital cameras with interchangeable lenses available as of June 1, 2012: refers to the number of phase-detection AF points selectable in single-point AF mode, based on Nikon research.



EXPEED 3: Fast just got faster

To be as fast as a Nikon 1 camera is, you need an engine that can handle speed. EXPEED 3 is a super-fast image processor engineered to deliver unparalleled levels of speed and performance in any situation.

Equipped with two powerful engines that can process images at an incredible 600 megapixels per second, it enables a host of innovative functions. You can snap a full-resolution photo while recording a movie³ and shoot full-resolution stills at up to 60 frames per second².

Fully capable of managing performance without sacrificing quality, EXPEED 3 offers superior noise reduction, so you can enjoy clean, finely detailed images. And because it does everything so fast, it supports high-speed SD memory cards that quickly save every fantastic shot you take.



Motion Snapshot: Bring your stills to life in a click

Every photo is unique, but not many come to life right in front of your eyes. A fantastic way to capture a moment in time as never before, Nikon's unique Motion Snapshot makes your photos come alive. Easily accessed via the mode dial, it all happens in just one click.

Using its ability to capture images before you fully press the shutter button, the camera simultaneously records a one-second slow-motion movie and a still image. As soon as you've taken your shot, it instantly combines the two to create a "living image."

A whole new experience, a Motion Snapshot keeps the story of a moment alive in a way that will delight and amaze you every time you look at it.

From the way someone might toss their head before they smile, or someone else might leave the frame before you click, fleeting movements and emotions are captured in a snap.



Nikon 1 J2 • Lens: 1 NIKKOR 11–27.5mm f/3.5–5.6 • Aperture: f/5 • Shutter Speed: 1/500 s • Exposure Compensation: 0 EV
ISO Sensitivity: Auto (ISO 160) • Picture Control: Standard

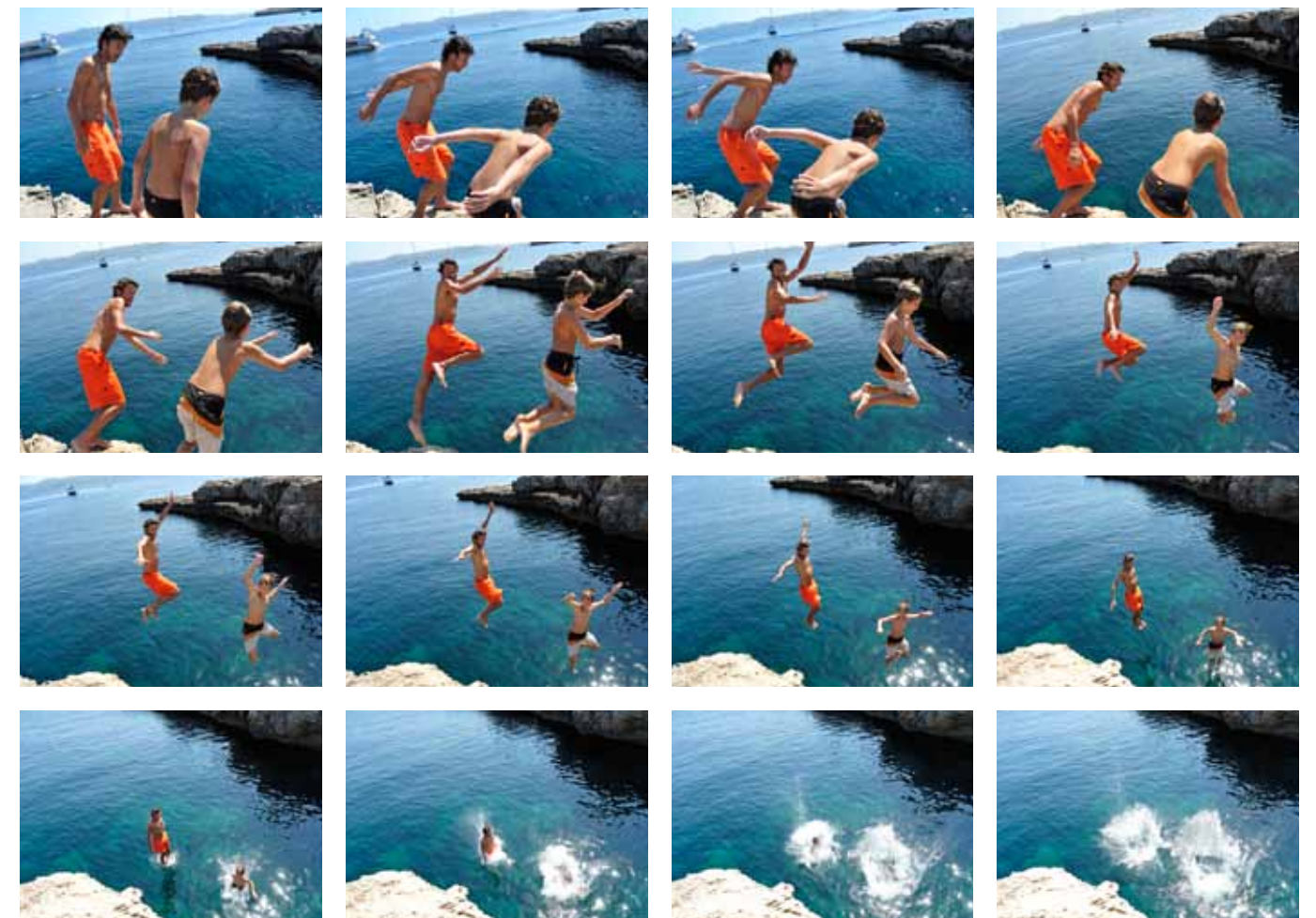
Smart Photo Selector: One shot—five great images to choose from

The most amazing things can happen at any moment, and thanks to Nikon's Smart Photo Selector (SPS) mode, you'll always capture the moment you want.

Harnessing the camera's pre/post capture technology, Smart Photo Selector flies into action as soon as you press the shutter button. It begins to capture images before you even take the shot, and continues after you're done, ultimately shooting 20 high-resolution images in quick succession.

The best shot is instantly displayed on the monitor, and four more are saved for you to choose from.

The camera recommends shots based on factors such as facial expression, composition, and focus, so you'll never again miss a smiling face, accidentally cut off someone's head, or end up with a blurred image.



Continuous shooting: Action at 60 frames per second²

When it comes to capturing smooth shots of fast action, you need unparalleled levels of speed and precision. With the world's fastest continuous shot,⁶ Nikon 1 cameras have outdone themselves.

When it comes to capturing smooth shots of fast action, you need unparalleled levels of speed and precision.

With the world's fastest continuous shot,⁶ Nikon 1 cameras have outdone themselves.

Engineered to deliver full-resolution images at up to 60 frames per second,² practically no movement will be too fast to capture. And when you want to focus

tightly on one subject, the camera can automatically track the subject you've chosen and still capture full-resolution images at 10 frames per second.

Whether you want to capture kids or pets as they dash about having fun, or your friends as they whiz around the city on bikes, a Nikon 1 camera will bring a new dimension of speed to every scene you shoot.

⁶ With focus mode set at AF-S; focus and exposure set for the first frame is fixed; among digital cameras with interchangeable lenses available as of June 1, 2012; as determined by Nikon performance tests.



Nikon 1 J2 • Lens: 1 NIKKOR 11–27.5mm f/3.5–5.6 • Aperture: f/5.6 • Shutter Speed: 1/640 s • Exposure Compensation: -0.3 EV • ISO Sensitivity: Auto (ISO 100)
White Balance: Auto • Picture Control: Standard

Advanced movie mode: Made with moviemaking in mind

Whether you're recording a family event or an arty film, nothing beats the joy of shooting a film on a camera that can deliver stunning Full HD movies. With all functions optimized to capture incredibly clear video footage, Nikon 1 cameras deliver superb high-resolution results.

You can take a full-resolution photo while filming,³ without interrupting recording. And you can shoot footage in extreme slow motion for dramatic effect.

you can shoot clear footage with low noise, even in low light, and easily soften backgrounds to make your subjects stand out.

Action scenes are easy because phase-detection AF, which is quick to focus on moving subjects, is available during recording. Thanks to the CX-format image sensor and high ISO sensitivity,

And whatever you're filming, the wide range of compatible 1 NIKKOR lenses opens up a world of creative possibilities.

Creative mode:⁷ See things differently

Capture life as you experience it. Creative Mode⁷ lets you apply filters and effects to photos before you shoot, and access PSAM shooting modes for total control. Enhance the mood of the moment, fit the whole view in, and enjoy a world that's always perfectly lit.

Night landscape + Night portrait capture clear photos in low light by instantly combining multiple shots taken at fast shutter speeds.

Backlighting HDR combines two consecutive shots into one detailed photo of a high-contrast scene, such as a sunny beach.

Easy panorama lets you move the camera vertically or horizontally to create 180- or 360-degree panoramas.

Soft captures romantic-looking photos by diffusing light around a sharply focused image.

Miniature effect makes distant subjects look like they are miniature scale models.

Selective color lets you create artistic-looking monochrome photos with flashes of color.

PSAM shooting modes put you in control of Exposure, Shutter Priority, Aperture Priority, and Manual Exposure.

⁷ Creative Mode is only available with the Nikon 1 J2.



Nikon 1 J2 • Lens: 1 NIKKOR 11–27.5mm f/3.5–5.6 • Aperture: f/3.8 • Shutter Speed: 1/60 s • Exposure Compensation: 0 EV • ISO Sensitivity: Auto (ISO 160) • Picture Control: Standard

1 NIKKOR 11–27.5mm f/3.5–5.6

Super-slim and ready to go

Today, tomorrow, or just a few minutes from now, you never know when you'll next want to use your camera to record the fun. The 1 NIKKOR 2.5x zoom is so slim you can keep it attached to your camera and still slip it easily into any pocket or bag.

The 11–27.5mm focal range (35mm equivalent: 30–74mm) means you'll always be prepared, even if that great photo or movie moment takes you by surprise.

From an impromptu afternoon in the park to a lavish dinner party, when the time to use your Nikon 1 does come along, simply turn the zoom ring on the lens to switch your camera on. When you're done, turn the zoom ring again to switch the camera off.

A small lens that's big on convenience, it captures busy lives perfectly.



Nikon 1 J2 • Lens: 1 NIKKOR 10–30mm f/3.5–5.6 • Aperture: f/4.5 • Shutter Speed: 1/1250 s • Exposure Compensation: 0 EV • ISO Sensitivity: Auto (ISO 100) White Balance: Auto • Picture Control: Standard

1 NIKKOR VR 10–30mm f/3.5–5.6

Moments just the way they were

Some experiences deserve to be preserved just the way you remember them, and the 1 NIKKOR 3x zoom is an incredibly compact standard zoom lens that gives you the freedom to do just that.

A great all-rounder with wide-angle capability, its 10–30mm focal range (35mm equivalent: 27–81mm) can cover a variety of scenes. A truly useful lens to have within easy reach wherever you go, its compact design includes a button that lets you retract the lens whenever you don't want to use it.

The built-in Vibration Reduction unit ensures steady stills and movies, and Nikon's Stepping Motor offers super-quiet autofocus performance—especially handy when filming.





Nikon 1 V1 • Lens: 1 NIKKOR 30–110mm f/3.8–5.6 • Aperture: f/5.6 • Shutter Speed: 1/320 s • Exposure Compensation: 0 EV • ISO Sensitivity: Auto (ISO 100) • White Balance: Auto

1 NIKKOR VR 30–110mm f/3.8–5.6

Zoom in close

The versatile 1 NIKKOR 30–110mm lens (35mm equivalent: 81–297mm) is a truly portable telephoto zoom lens that makes it easy to get close to distant subjects.

The perfect lens to take with you on a city break or a day out shooting, it lets you get close to distant subjects with ease, and it's a great way to call attention to someone's face rather than the background when shooting a portrait.

Whether you want to capture a photo or a movie, the built-in Vibration Reduction unit ensures steady shots, and Nikon's Stepping Motor offers super-quiet autofocus performance—especially handy when filming.

Incredibly portable, this lens is equipped with a retractable lens mechanism, so you can easily retract it whenever you don't want to use it.



Nikon 1 V1 • Lens: 1 NIKKOR 10mm f/2.8 • Aperture: f/4 • Shutter Speed: 1/25 s • Exposure Compensation: +0.3 EV • ISO Sensitivity: Auto (ISO 100) • White Balance: Auto

1 NIKKOR 10mm f/2.8

Go wide and stay sharp

You never quite know when the chance to capture a great shot will come along, but this 1 NIKKOR wide-angle lens is so slim that you can easily take it with you in case one does.

Offering a 10 mm (35mm equivalent: 27 mm) fixed focal length, it's ideal for making interiors and landscapes look even vaster, or when shooting in cramped spaces like restaurants.

Its thin yet solid construction makes it especially easy to take with you wherever you go, and you can use it to experiment with wide-angle shots when shooting movies, too.

The smooth aperture adjustment lets you move easily from sharp to soft backgrounds to make your subject stand out more, even when shooting a movie. Nikon's Stepping Motor delivers super-quiet autofocus performance, which is handy when filming.





Nikon 1 V1 • Lens: 1 NIKKOR VR 10–100mm f/4.5–5.6 PD-ZOOM • Aperture: f/5.6 • Shutter Speed: 1/125 s • Exposure Compensation: +1.0 EV
ISO Sensitivity: Auto (ISO 3200) • White Balance: Auto • Picture Control: Standard

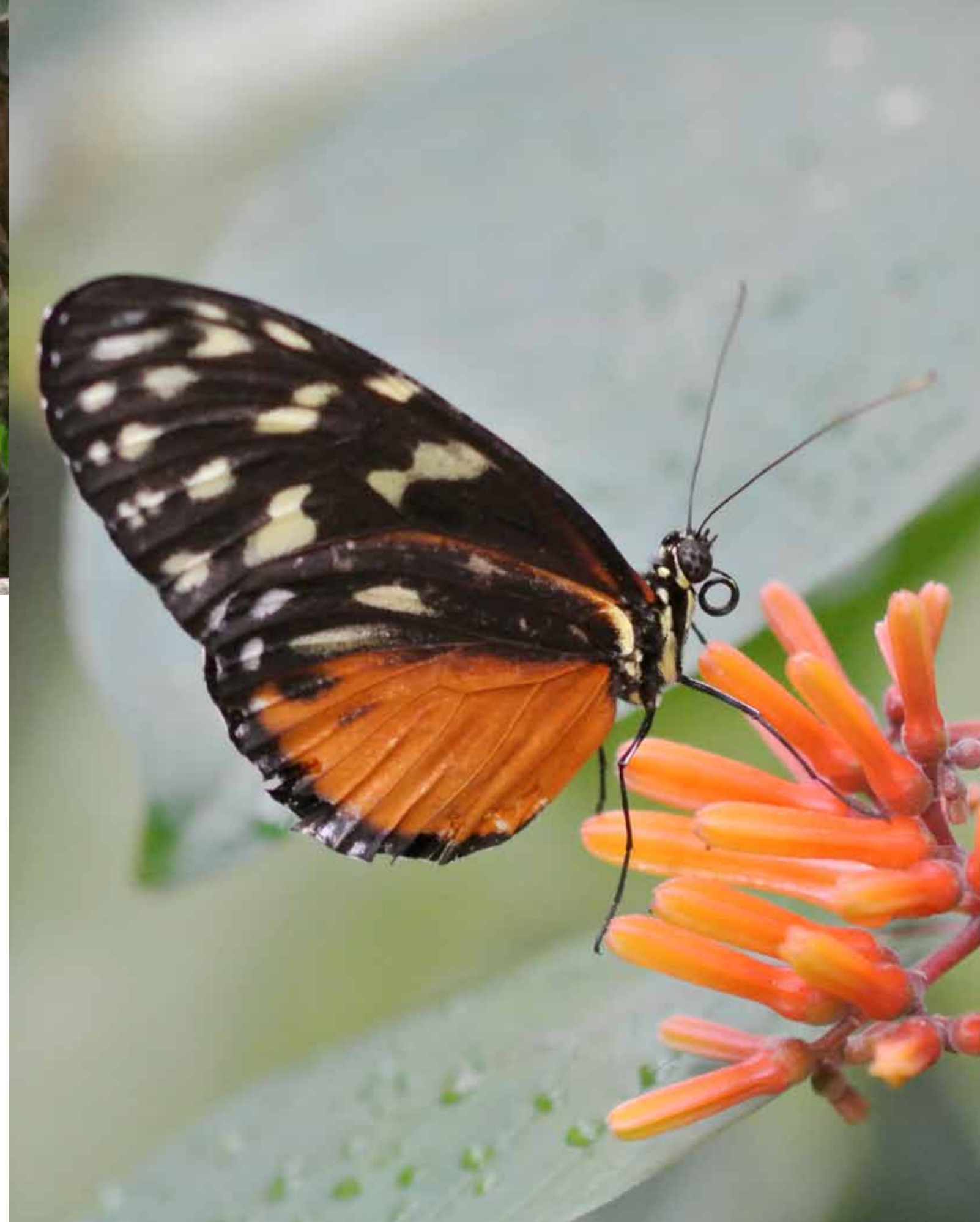
1 NIKKOR VR 10–100mm f/4.5–5.6 PD-ZOOM

Movie shooter

The 1 NIKKOR 10x power-drive zoom is a gift to moviemakers. Designed to let you film cinematic-looking scenes with ease, its 10–100mm zoom range (35mm equivalent: 27–270mm) lets you capture movies in superb clarity.

Whether you want to heighten tension or create a sense of calm, the convenient power-drive zoom switch lets you zoom quickly or slowly towards, or away from, subjects. The built-in Vibration Reduction unit will keep all your shots steady. You can change the aperture for sharp or soft backgrounds, and Nikon's Stepping Motor offers super-quiet autofocus performance.

With a retractable mechanism that extends the lens out or folds it away when you power the camera on or off, this lens is as easy to carry around on a movie set as anywhere else.



Nikon 1 V1 • Lens: AF-S DX Micro-NIKKOR 40mm f/2.8G • Focus Mode: AF-S • Aperture: f/3 • Shutter Speed: 1/400 s • Exposure Compensation: 0 EV • ISO Sensitivity: Auto (ISO 1250)
White Balance: Auto • Picture Control: Standard

Designed to work seamlessly with your camera, the Nikon 1 family of accessories helps you get the most out of your shooting



Mount adapter A world of possibilities

Match a D-SLR lens to your shooting situation or experiment with new creative ideas. A wide range of world-class NIKKOR lenses attach easily and securely to the Nikon 1 FT1 mount adapter. From extreme wide-angles to super-telephotos and more, the possibilities are limitless.



Speedlight flash The right light

Control the direction of light—no batteries required. Attach the SB-N5 Speedlight flash to the multi accessory port on the Nikon 1 V1 camera,⁸ and rotate it vertically or horizontally to bounce the flash off the ceiling or walls for natural-looking images with soft shadow.



GPS unit Tag your images

Always tag your Nikon 1 images to the right location⁸ with the tiny GP-N100 GPS unit. Easy to attach and quick to start up, it automatically records latitude, longitude, altitude, and time as geotags in the image data (EXIF).



Waterproof case For undersea adventures

Capture unique Nikon 1 shots under the sea with the Nikon 1 WP-N1 waterproof case.⁹ Waterproof to 40 m, and designed to be especially compact, the case allows easy access to the main camera buttons and functions so you can keep shooting as you dive deep.



Camera grips Hold on tight

The Nikon 1 GR-N2000 and GR-N1000 removable camera grips ensure that you maintain a secure hold on your camera for more comfortable shooting.

⁸ Only compatible with the Nikon 1 V1.

⁹ Compatible with Nikon J1 / J2 and 1 NIKKOR VR 10–30mm.

Kit yourself out

With a range of Nikon 1 kits,¹⁰ there's every chance for you to select the perfect combination of camera and 1 NIKKOR lenses.

Which memories will you capture tomorrow? The Slim Zoom Lens Kit¹¹ with the ultra-portable **1 NIKKOR 11–27.5mm f/3.5–5.6** 2.5x zoom lens ensures you'll always be ready to shoot. Lightweight and easy to carry, you can take this kit with you wherever you go.

For the perfect "everyday" kit, the compact Zoom Lens Kit with the **1 NIKKOR VR 10–30mm f/3.5–5.6** lens is hard to beat. The 3x zoom lens with wide-angle capability is ideal for a variety of scenes, so you can make the most of every shooting opportunity.

The Double Zoom Kit includes the lightweight **1 NIKKOR VR 10–30mm f/3.5–5.6** 3x standard zoom lens and the compact **1 NIKKOR VR 30–110mm f/3.8–5.6** telephoto zoom lens, both with Nikon's Vibration Reduction technology. A great all-round kit, the lenses complement each other perfectly so you can move from intimate portraits to distant subjects with ease.

When you want to pack light, the Slim Lens Kit¹² with the ultra-thin **1 NIKKOR 10mm f/2.8** wide-angle lens is the kit to take. The lens in this kit is ideal for making landscapes look even more vast or when shooting in cramped spaces, and for dramatic wide-angle shots when shooting movies.

Nikon 1 J2 kits are available in black, white, red, pink, silver, and orange. Nikon 1 V1 kits come in iconic black or white.



¹⁰ Availability may vary per region. Please refer to your local Nikon dealer or website for more information.
¹¹ This kit is only available with the Nikon 1 J2.
¹² Not available for the Nikon 1 J2.

Nikon 1 V1 kits come in iconic black or white.

I AM | MORE THAN 1



Nikon 1 J2 kits are available in pink, red, orange, silver, black, and white.

Accessories overview

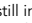
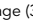


		Available colors	Nikon 1 J1/J2	Nikon 1 V1	1 NIKKOR 10mm f/2.8	1 NIKKOR 11–27.5mm f/3.5–5.6	1 NIKKOR VR 10–30mm f/3.5–5.6	1 NIKKOR VR 30–110mm f/3.8–5.6	1 NIKKOR VR 10–100mm f/4.5–5.6 PD-ZOOM
● Standard									
○ Optional									
Rechargeable Li-ion Battery EN-EL20			●						
Rechargeable Li-ion Battery EN-EL15				●					
Battery Charger MH-27			●						
Battery Charger MH-25				●					
USB Cable UC-E15			●						
USB Cable UC-E6				●					
Audio/Video Cable EG-CP14				●					
Strap AN-N1000			●	●					
Body Cap BF-N1000			●	●					
Multi Accessory Port Cover BS-N1000	■□			●					
1 NIKKOR VR 10–100mm Lens Hood HB-N102									●
1 NIKKOR VR 30–110mm Lens Hood HB-N103								●	
ViewNX 2/Short Movie Creator CD-ROM (bundled software)			●	●					
Tripod Mounting Spacer TA-N100			○	○					○
Mount Adapter FT1			○	○					
Waterproof Case WP-N1			○				○		
Nikon 1 J1 / J2 Body Case CB-N2000	■□■□■□■□		○						
Nikon 1 J1 / J2 Body Case Set: Body Case + Front Cover (1 NIKKOR VR 10–30mm) CB-N2000	■□■□■□■□		○				○		
Nikon 1 J1 / J2 Body Case Set: Body Case + Front Cover (1 NIKKOR 10mm) CB-N2000	■□■□■□■□		○		○				
Nikon 1 V1 Body Case CB-N1000	■□			○					
Nikon 1 V1 Body Case Set: Body Case + Front Cover (1 NIKKOR VR 10–30mm) CB-N1000	■□			○			○		
Nikon 1 V1 Body Case Set: Body Case + Front Cover (1 NIKKOR 10mm) CB-N1000	■□			○	○				
Leather Neck Strap AN-N2000	■□■□■□■□		○	○					
Leather Hand Strap AH-N1000	■□■□■□■□		○	○					
Wrapping Cloth CF-N3000	■□■		○	○	○	○	○	○	○
Stereo Microphone ME-1				○					
Nikon 1 J1 / J2 Grip GR-N2000	■□		○						
Nikon 1 V1 Grip GR-N1000	■□			○					
Multi Accessory Port Adapter AS-N1000				○					
Power Connector EP-5C			○						
Power Connector EP-5B				○					
AC Adapter EH-5b			○	○					
Remote Control ML-L3			○	○					
Speedlight SB-N5				○					
GPS Unit GP-N100	■□			○					
1 NIKKOR VR 10–30mm Lens Hood HB-N101							○		
1 NIKKOR 11–27,5mm Lens Hood HB-N102						○			
1 NIKKOR 10mm Lens Hood HN-N101					○				
1 NIKKOR 10mm Lens Hood Cap HC-N101					○				
Lens Case CL-N101	■□■				○	○	○	○	
Lens Case CL-N102									○

1 NIKKOR technical specifications

	1 NIKKOR 10mm f/2.8	1 NIKKOR 11–27.5mm f/3.5–5.6	1 NIKKOR VR 10–30mm f/3.5–5.6
Lens construction (groups/elements)	5/6	6/8, 1 protective glass	9/12
Angle of view	77°	72°–32°20′	77°–29°40′
Number of diaphragm	7	7	7
Minimum f-stop	11	16	16
Minimum focus distance (m/ft.)	0.2/0.7	0.3/1.0 from focal plan at all zoom positions	0.2/0.7
Maximum reproduction ratio (35mm equivalent)	0.06 (0.16)	0.1x (approx. 0.28x)	0.21 (0.57)
Weight (g/oz.)	Approx. 77/2.8	Approx. 83/3.0	Approx. 115/4.1
Dia. x length (distance from camera lens mount flange) (mm)	Approx. 55.5 x 22	Approx. 57.5 x 31 when lens is retracted	Approx. 57.5 × 42 when lens is retracted
Filter-attachment size (mm)	40.5	40.5	40.5
Lens cap type	Snap-on	Snap-on	Snap-on
Lens hood	HN-N101 (optional)	HB-N102 (optional)	HB-N101 (optional)
Lens case	CL-N101 (optional)	CL-N101 (optional)	CL-N101 (optional)
Lens hood cap	HC-N101 (optional)		
	1 NIKKOR VR 30–110mm f/3.8–5.6	1 NIKKOR VR 10–100mm f/4.5–5.6 PD-ZOOM	
Lens construction (groups/elements)	12/18	14/21	
Angle of view	29°40′–8°20′	77°–9°10′	
Number of diaphragm	7	7	
Minimum f-stop	16	16	
Minimum focus distance (m/ft.)	1.0/3.3	10 mm focal length: 0.3/1.0 100 mm focal length: 0.85/2.8	
Maximum reproduction ratio (35mm equivalent)	0.1 (0.28)	0.12 (0.34)	
Weight (g/oz.)	Approx. 180/6.3	Approx. 530/1 lb 2.7 oz.	
Dia. x length (distance from camera lens mount flange) (mm)	Approx. 60 x 61 when lens is retracted	Approx. 77 x 95 when lens is retracted	
Filter-attachment size (mm)	40.5	72	
Lens cap type	Snap-on	Snap-on	
Lens hood	HB-N103 (provided)	HB-N102 (provided)	
Lens case	CL-N101 (optional)	CL-N102 (optional)	
Lens hood cap			

NOTE: Lens hood names indicate type: HN for Screw-in, HR for Rubber Screw-in, HK for Slip-on, HS for Snap-on and HB for Bayonet. Nikon reserves the right to change the specifications of the hardware described in this brochure at any time and without prior notice.

Nikon 1 V1 Specifications

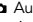
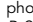
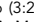
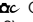
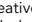
Type	
Type	Digital camera with interchangeable lenses
Lens mount	Nikon 1-mount
Effective angle of view	Approx. 2.7× lens focal length (35mm format equivalent)
Effective pixels	
Effective pixels	10.1 million
Image sensor	
Image sensor	13.2 mm × 8.8 mm CMOS sensor (Nikon CX format)
Dust-reduction system	Image sensor cleaning
Image size	
Image size (pixels)	Still images (still image and Smart Photo Selector modes, aspect ratio 3:2) • 3,872 × 2,592 • 2,896 × 1,944 • 1,936 × 1,296 Still images (movie mode, aspect ratio 16:9) • 3,840 × 2,160 (1080/60i) • 1,920 × 1,080 (1080/30p) • 1,280 × 720 (720/60p) Still images (Motion Snapshot mode, aspect ratio 16:9) • 3,840 × 2,160
File format	•NEF (RAW): 12-bit, compressed •JPEG: JPEG-Baseline compliant with fine (approx. 1 : 4), normal (approx. 1 : 8), or basic (approx. 1 : 16) compression •NEF (RAW) + JPEG: single photograph recorded in both NEF (RAW) and JPEG formats
Picture Control system	Standard, Neutral, Vivid, Monochrome, Portrait, Landscape; selected Picture Control can be modified; storage for custom Picture Controls
Media	SD (Secure Digital), SDHC, and SDXC memory cards
File system	DCF (Design Rule for Camera File System) 2.0, DPOF (Digital Print Order Format), Exif (Exchangeable Image File Format for Digital Still Cameras) 2.3, PictBridge
Viewfinder	
Electronic viewfinder	0.47-in., approx. 1440k-dot color TFT LCD viewfinder with diopter control and brightness adjustment
Frame coverage	Approx. 100% horizontal and 100% vertical
Eyepoint	17 mm (−1.0 m ^{−1} ; from center surface of viewfinder eyepiece lens)
Diopter adjustment	−3 to +1 m ^{−1}
Eye sensor	Camera switches to viewfinder display when it detects that view-finder is in use
Shooting modes	
Shooting modes	 still image (3:2)  Smart Photo Selector (3:2)  movie (HD 16:9, slow motion 8:3)  Motion Snapshot (16:9)
Compatible lenses	
Compatible lenses	1 NIKKOR lenses for 1-mount
Shutter	
Type	Electronically-controlled vertical-travel focalplane mechanical shutter; electronic shutter
Speed	•Mechanical shutter: 1/4,000–30 s in steps of 1/3 EV; Bulb; Time (requires optional ML-L3 remote control) •Electronic shutter: 1/16,000–30 s in steps of 1/3 EV; Bulb; Time (requires optional ML-L3 remote control)
Flash sync speed	•Mechanical shutter: synchronizes with shutter at X=1/250 s or slower •Electronic shutter: synchronizes with shutter at X=1/60 s or slower
Release	
Mode	•Single frame, continuous •Mechanical, Electronic, Electronic (Hi) •Self-timer, delayed remote, quick-response remote, interval timer shooting
Frame advance rate*	Electronic (Hi): approx. 10, 30, or 60 fps •Other modes: up to 5 fps (single AF or manual focus, S Shutter-priority auto or M Manual exposure mode, shutter speed 1/250 s or faster, and other settings at default values)
Self-timer	2 s, 5 s, 10 s
Remote control modes	Delayed remote (2 s); quick-response remote
Exposure	
Metering	TTL metering using image sensor
Metering method	•Matrix •Center-weighted: meters 4.5 mm circle in center of frame •Spot: meters 2 mm circle centered on selected focus area
Mode	Programmed auto with flexible program; shutter-priority auto; aperture-priority auto; manual; scene auto selector
Exposure compensation	−3 to +3 EV in increments of 1/3 EV
Exposure lock	Luminosity locked at metered value AE-L/AF-L button
ISO sensitivity (Recommended Exposure Index)	ISO 100–3200 in steps of 1 EV. Can also be set to approx. 1 EV (ISO 6400 equivalent) above ISO 3200; auto ISO sensitivity control (ISO 100–3200, 100–800, 100–400) available
Active D-Lighting	On, off
Focus	
Autofocus	Hybrid autofocus (phase-detection/contrast-detect AF); AF-assist illuminator
Lens servo	•Autofocus (AF): Single AF (AF-S); continuous AF (AF-C); auto AF-S/AF-C selection (AF-A); fulltime AF (AF-F) •Manual focus (MF)
AF-area mode	Single-point, auto-area, subject tracking
Focus area	•Single-point AF: 135 focus areas; the center 73 areas support phase-detection AF •Auto-area AF: 41 focus areas
Focus lock	Focus can be locked by pressing shutter-release button halfway (single AF) or by pressing AE-L/AF-L button

Face-priority AF	On, off
Flash	
Control	i-TTL flash control using image sensor available with optional SB-N5 flash unit
Flash mode	Fill flash, slow sync, red-eye reduction, slow sync with red-eye reduction, rear-curtain sync, rear curtain with slow sync
Flash compensation	−3 to +1 EV in increments of 1/3 EV
Flash-ready indicator	Lights when optional flash unit is fully charged
White balance	
White balance	Auto, incandescent, fluorescent, direct sunlight, flash, cloudy, shade, preset manual, all except preset manual with fine tuning
Movie	
Metering	TTL metering using image sensor
Metering method	•Matrix •Center-weighted: meters 4.5 mm circle in center of frame •Spot: meters 2 mm circle centered on selected focus area
Frame size (pixels)/recording rate	HD movies •1,920 × 1,080/60i (59.94 fields/s**) •1,920 × 1,080/30p (29.97 fps) •1,280 × 720/60p (59.94 fps) Slow-motion movies • 640 × 240/400 fps (plays at 30p/29.97 fps) • 320 × 120/1,200 fps (plays at 30p/29.97 fps) Movies recorded in still image mode • 1,072 × 720/60p (59.94 fps) (plays at 24p/23.976 fps) Motion Snapshot • 1,920 × 1,080/60p (59.94 fps) (plays at 24p/23.976 fps)
Max. recording time	1080/60i (20 minutes), 1080/30p (20 minutes), 720/60p (29 minutes)
File format	MOV
Video compression	H.264/MPEG-4 Advanced Video Coding
Audio recording format	AAC
Audio recording device	Built-in or optional external ME-1 stereo microphone; sensitivity adjustable
Monitor	
Monitor	7.5 cm/3-in., approx. 921k-dot, TFT LCD with brightness adjustment
Playback	
Playback function	Full-frame and thumbnail (4, 9, or 72 images or calendar) playback with playback zoom, movie playback, slide show, histogram display, auto image rotation, and rating option
Interface	
USB	Hi-Speed USB
Video output	NTSC, PAL
HDMI output	Type C mini-pin HDMI connector
Multi accessory port	Used for designated accessories
Audio input	Stereo mini-pin jack (3.5 mm diameter)
Supported languages	
Supported languages	Arabic, Chinese (Simplified and Traditional), Czech, Danish, Dutch, English, Finnish, French, German, Greek, Hungarian, Indonesian, Italian, Japanese, Korean, Norwegian, Polish, Portuguese, Romanian, Russian, Spanish, Swedish, Thai, Turkish, Ukrainian
Power source	
Battery	One rechargeable Li-ion EN-EL15 battery
AC adapter	EH-5b AC adapter; requires EP-5B power connector (available separately)
Tripod socket	
Tripod socket	1/4-in. (ISO 1222)
Dimensions/weight	
Dimensions (W×H×D)	Approx. 113 × 76 × 43.5 mm/4.4 × 3 × 1.7 in. excluding projections; thickness of body (from mount to monitor) is 36 mm/1.4 in.
Weight	Approx. 383 g/13.5 oz with battery and memory card but without body cap; approx. 294 g/10.4 oz (camera body only)
Operating environment	
Temperature	Temperature: 0–40 °C/+32–104 °F
Humidity	Less than 85% (no condensation)
Supplied accessories	
Supplied accessories (may differ by country or area)	EN-EL15 rechargeable Li-ion battery, MH-25 battery charger, UC-E6 USB cable, EG-CP14 audio/video cable, AN-N1000 strap, BF-N1000 body cap, BS-N1000 multi accessory port cover, ViewNX 2/Short Movie Creator CD-ROM

Unless otherwise stated, all figures are for a camera with a fully-charged battery operating at an ambient temperature of 20 °C (68 °F). Nikon reserves the right to change the specifications of the hardware and software described in this brochure at any time and without prior notice. Nikon will not be held liable for damages that may result from any mistakes that this brochure may contain.

* Around 34 frames at shooting speed of 10 fps; around 30 frames if shooting speed is set at 30 fps and 60 fps. As determined by Nikon performance tests. **Sensor output is about 60 fps.

Nikon 1 J2 Specifications

Type	
Type	Digital camera with interchangeable lenses
Lens mount	Nikon 1-mount
Effective angle of view	Approx. 2.7× lens focal length (35mm format equivalent)
Effective pixels	
Effective pixels	10.1 million
Image sensor	
Image sensor	13.2 mm × 8.8 mm CMOS sensor (Nikon CX format)
Dust-reduction system	Dust shield glass
Image size	
Image size (pixels)	Still images (still image and Smart Photo Selector modes, aspect ratio 3:2) • 3,872 × 2,592 • 2,896 × 1,944 • 1,936 × 1,296 Still images (Normal Panorama, camera panned horizontally; aspect ratio 40:7) • 3,200 × 560 Still images (Normal Panorama, camera panned vertically; aspect ratio 8:25) • 1,024 × 3,200 Still images (Wide Panorama, camera panned horizontally; aspect ratio 80:7) • 6,400 × 560 Still images (Wide Panorama, camera panned vertically; aspect ratio 4:25) • 1,024 × 6,400 Still images (movie mode, aspect ratio 16:9) • 3,840 × 2,160 (1080/60i) • 1,920 × 1,080 (1080/30p) • 1,280 × 720 (720/60p) Still images (Motion Snapshot mode, aspect ratio 16:9) • 3,840 × 2,160
File format	•NEF (RAW): 12-bit, compressed •JPEG: JPEG-Baseline compliant with fine (approx. 1 : 4), normal (approx. 1 : 8), or basic (approx. 1 : 16) compression •NEF (RAW) + JPEG: single photograph recorded in both NEF (RAW) and JPEG formats
Picture Control system	Standard, Neutral, Vivid, Monochrome, Portrait, Landscape; selected Picture Control can be modified; storage for custom Picture Controls
Media	SD (Secure Digital), SDHC, and SDXC memory cards
File system	DCF (Design Rule for Camera File System) 2.0, DPOF (Digital Print Order Format), Exif (Exchangeable Image File Format for Digital Still Cameras) 2.3, PictBridge
Shooting modes	
Shooting modes	 Auto photo (3:2)  Creative, with a choice of the following options: P, S, A, M (3:2), night landscape (3:2), night portrait (3:2), backlighting (3:2), easy panorama (normal horizontal 40:7, normal vertical 8:25, wide horizontal 80:7, wide vertical 4:25), soft (3:2), miniature effect (3:2) and selective color (3:2)  Smart Photo Selector (3:2)  movie (HD 16:9, slow motion 8:3)  Motion Snapshot (16:9)
Compatible lenses	
Compatible lenses	1 NIKKOR lenses for 1-mount
Shutter	
Type	Electronic shutter
Speed	1/16,000-30 s in steps of 1/3EV; Bulb; Time (requires optional ML-L3 remote control)
Flash sync speed	Synchronizes with shutter at X=1/60 s or slower
Release	
Mode	•Single frame, continuous, Electronic (Hi) •Self-timer, delayed remote, quick-response remote, interval timer shooting
Frame advance rate*	Electronic (Hi): approx. 10, 30, or 60 fps •Other modes: up to 5 fps (single AF or manual focus, S Shutter-priority auto or M Manual exposure mode, shutter speed 1/250 s or faster, and other settings at default values)
Self-timer	2 s, 5 s, 10 s
Remote control modes	Delayed remote (2 s); quick-response remote
Exposure	
Metering	TTL metering using image sensor
Metering method	•Matrix •Center-weighted: meters 4.5 mm circle in center of frame •Spot: meters 2 mm circle centered on selected focus area
Mode	Programmed auto with flexible program; shutter-priority auto; aperture-priority auto; manual; scene auto selector
Exposure compensation	−3 to +3 EV in increments of 1/3 EV: available when Programmed auto, Shutter-priority auto, or Aperture-priority auto is selected for Exposure mode
Exposure lock	Luminosity locked at metered value with AE-L/AF-L button
ISO sensitivity (Recommended Index)	ISO 100–3200 in steps of 1 EV. Can be adjusted by user when Programmed auto, Shutter-priority auto, Aperture-priority auto, or M Manual is selected for Exposure mode; can also be set to approx 1 EV (ISO 6400 equivalent) above ISO 3200; auto ISO sensitivity control (ISO 100–3200, 100–800, 100–400) available
Active D-Lighting	On, off
Focus	
Autofocus	Hybrid autofocus (phase-detection/contrast-detect AF); AF-assist illuminator
Lens servo	•Autofocus (AF): Single AF (AF-S); continuous AF (AF-C); auto AF-S/AF-C selection (AF-A); fulltime AF (AF-F) •Manual focus (MF)
AF-area mode	Single-point, auto-area, subject tracking
Focus area	•Single-point AF: 135 focus areas; the center 73 areas support phase-detection AF •Auto-area AF: 41 focus areas

Focus lock	Focus can be locked by pressing shutter-release button halfway (single AF) or by pressing AE-L/AF-L button
Face-priority AF	On, off
Flash	
Built-in flash	Raised by sliding flash pop-up control
Guide Number (GN)	Approx. 5/16 (m/ft, ISO 100, 20°C/68°F)
Flash mode	i-TTL flash control using image sensor available
Flash mode	Fill flash, slow sync, red-eye reduction, slow sync with red-eye reduction, rear-curtain sync, rear-curtain with slow sync
Flash compensation	−3 to +1 EV in increments of 1/3 EV
Flash-ready indicator	Lights when built-in flash unit is fully charged
White balance	
White balance	Auto, incandescent, fluorescent, direct sunlight, flash, cloudy, shade, preset manual, all except preset manual with fine tuning
Movie	
Metering	TTL metering using image sensor
Metering method	•Matrix •Center-weighted: meters 4.5 mm circle in center of frame •Spot: meters 2 mm circle centered on selected focus area
Frame size (pixels)/recording rate	HD movies •1,920 × 1,080/60i (59.94 fields/s**) •1,920 × 1,080/30p (29.97 fps) •1,280 × 720/60p (59.94 fps) Slow-motion movies • 640 × 240/400 fps (plays at 30p/29.97 fps) • 320 × 120/1,200 fps (plays at 30p/29.97 fps) Motion Snapshot • 1,920 × 1,080/60p (59.94 fps) (plays at 24p/23.976 fps)
File format	MOV
Video compression	H.264/MPEG-4 Advanced Video Coding
Audio recording format	AAC
Audio recording device	Built-in stereo microphone; sensitivity adjustable
Monitor	
Monitor	7.5 cm/3-in., approx. 921k-dot, TFT LCD with brightness adjust-ment
Playback	
Playback function	Full-frame and thumbnail (4, 9, or 72 images or calendar) playback with playback zoom, movie and panorama playback, slide show, histogram display, auto image rotation, and rating option
Interface	
USB	Hi-Speed USB
HDMI output	Type C mini-pin HDMI connector
Supported languages	
Supported languages	Arabic, Chinese (Simplified and Traditional), Czech, Danish, Dutch, English, Finnish, French, German, Greek, Hungarian, Indonesian, Italian, Japanese, Korean, Norwegian, Polish, Portuguese, Romanian, Russian, Spanish, Swedish, Thai, Turkish, Ukrainian
Power source	
Battery	One rechargeable Li-ion EN-EL20 battery
AC adapter	EH-5b AC adapter; requires EP-5C power connector (available separately)
Tripod socket	
Tripod socket	1/4-in. (ISO 1222)
Dimensions/weight	
Dimensions (W×H×D)	Approx. 106.0 × 61.0 × 29.8 mm/4.2 × 2.4 × 1.2-in., excluding projections
Weight	Approx. 280 g/9.9 oz with battery and memory card but without body cap; approx. 237 g/8.4 oz (camera body only)
Operating environment	
Temperature	Temperature: 0–40 °C/+32–104 °F
Humidity	Less than 85% (no condensation)
Supplied accessories	
Supplied accessories (may differ by country or area)	EN-EL20 rechargeable Li-ion battery (with terminal cover), MH-27 battery charger, BF-N1000 body cap, UC-E15 USB cable, AN-N1000 strap, ViewNX 2/Short Movie Creator CD, User's Manual, Reference manual CD

Unless otherwise stated, all figures are for a camera with a fully-charged battery operating at an ambient temperature of 20 °C (68 °F). Nikon reserves the right to change the specifications of the hardware and software described in this brochure at any time and without prior notice. Nikon will not be held liable for damages that may result from any mistakes that this brochure may contain.

* Around 13 frames at shooting speed of 10 fps; around 12 frames if shooting speed is set at 30 fps and 60 fps. As determined by Nikon performance tests. **Sensor output is about 60 fps.



WARNING

**TO ENSURE CORRECT USAGE, READ MANUALS CAREFULLY BEFORE USING YOUR EQUIPMENT.
SOME DOCUMENTATION IS SUPPLIED ON CD-ROM ONLY.**

Visit the Nikon Europe website at: **www.europe-nikon.com**



Nikon Europe B.V. Tripolis 100, Burgerweeshuispad 101, 1076 ER Amsterdam, 1070 KE Amsterdam www.europe-nikon.com
NIKON CORPORATION Shin-Yurakucho Bldg., 12-1, Yurakucho 1-chrome, Chiyoda-ku, Tokyo 100-8331, Japan www.nikon.com