

Web TimeSheet
Integration Manager
for **ACCPAC**

Version 5.7

www.replicon.com



Copyright © 2004 Replicon, Inc. All rights reserved.

All parts of this manual are the property of Replicon, Inc. No parts of this manual may be reproduced in any manner whatsoever including mechanical or electronic media such as disk or tape. No part of this manual may be transmitted in any form by any means without the written permission of Replicon, Inc.

Web TimeSheet is a registered trademark of Replicon, Inc. All other products are registered trademarks or trademarks of the respective companies.

Contact Information

Replicon, Inc.
830, 910 - 7th Ave. S.W.
Calgary, Canada T2P 3N8

Direct:
1-403-262-6519

Toll Free in North America: *
1-877-737-5420

Toll Free in Europe: *
00-800-7375-4266

Toll Free in Australasia: *
011-800-7375-4266

Fax:
1-403-233-8046

<http://www.replicon.com>
info@replicon.com

**The international toll free numbers may not work in some countries. If you experience problems, use the direct line to contact Replicon.*



Contents

Chapter 1 - What is WTS Integration Manager?	1
Introduction	1
Technical Requirements	1
Constraints	1
Chapter 2 - Installing the WTS Integration Manager	2
Before You Install	2
Running the Installation	2
Chapter 3 - Using the WTS Integration Manager	4
Running the Export	4
Accessing the Exported Data	4
Chapter 4 - Field Relationships	6
Web TimeSheet to ACCPAC Advantage Series	6

Chapter 1 - What is WTS Integration Manager? _____

Introduction

The Web TimeSheet Integration Manager for ACCPAC allows you to generate a report of Web TimeSheet data and export the data to a .csv file that can be opened in ACCPAC Advantage Series.

Technical Requirements

The following applications are required to successfully export data from Web TimeSheet to ACCPAC Advantage Series using the Web TimeSheet Integration Manager for ACCPAC:

- ACCPAC Advantage Series 5.0 or higher
- Web TimeSheet 5.6 or higher (SQL or Oracle)
- Microsoft Internet Explorer 4.0 or higher/Netscape 4.x or higher (excluding Netscape 6.x)

Constraints

The information for specific Web TimeSheet fields must match existing fields in ACCPAC Advantage Series, as noted below.

Web TimeSheet Field	ACCPAC Field
Client Code	Customer Code
Task Code	Item Code

Chapter 2 - Installing the WTS Integration Manager

Note...

Make sure you install Web TimeSheet before installing the Web TimeSheet Integration Manager for ACCPAC.

Before You Install

Before installing the 5.6 version of the Web TimeSheet Integration Manager for ACCPAC, make sure you have already installed Web TimeSheet 5.6. The Web TimeSheet Integration Manager for ACCPAC will need to be installed in the root Web TimeSheet directory.

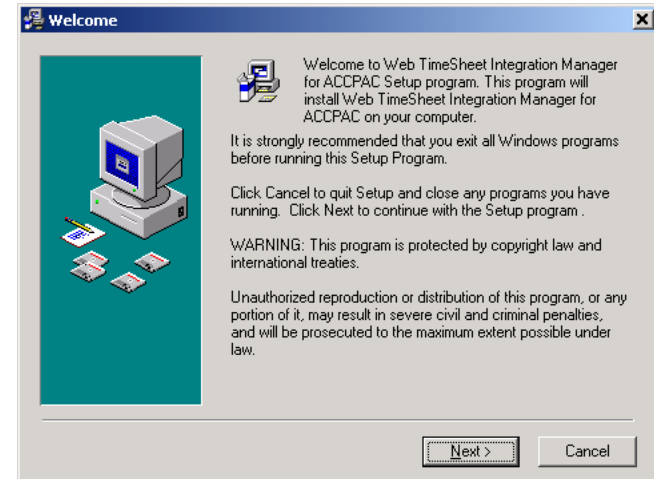
Running the Installation

This section explains how to complete the installation of the Web TimeSheet Integration Manager for ACCPAC.

You will need to purchase the Web TimeSheet Integration Manager for ACCPAC and obtain the *WTS56ACCPACLink.exe* file from Replicon Customer Support. The database version for Web TimeSheet Integration Manager for ACCPAC should be the same as your Web TimeSheet database (SQL or Oracle).

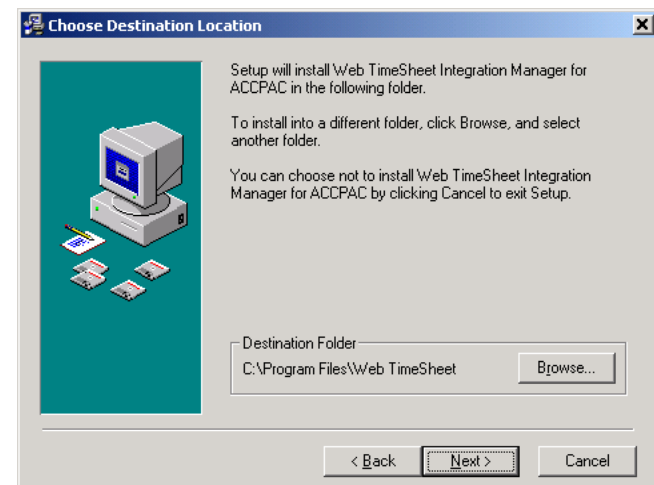
The Installation Wizard will guide you through the installation process.

1. Stop the service associated with Web TimeSheet and back up the Web TimeSheet database.
2. Launch the *WTS56ACCPACLink.exe* file. The Welcome screen is displayed.

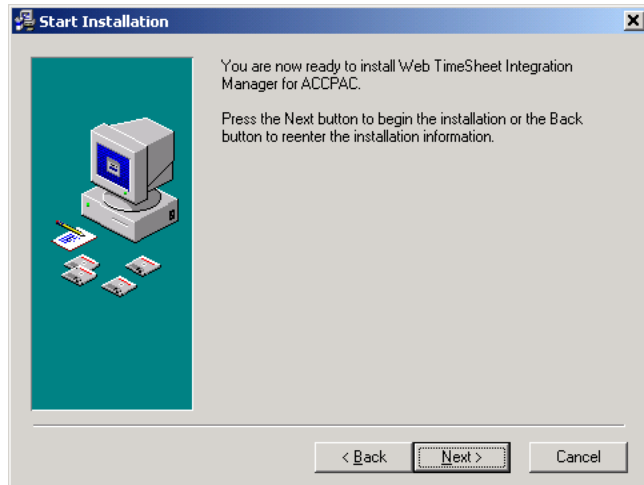


3. Next you will need to specify the directory where the Web TimeSheet Integration Manager for ACCPAC should be installed.

The Integration Manager for ACCPAC must be installed in the root of the Web TimeSheet directory. Use the Browse button to locate the Web TimeSheet directory.

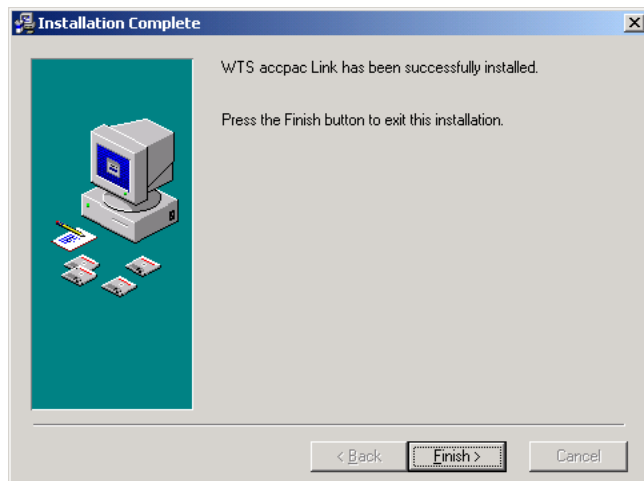


- Now you are ready to install the Web TimeSheet Integration Manager for ACCPAC. Click the Next button to start the installation.



- Restart the Web TimeSheet service. You are now ready to use the Web TimeSheet Integration Manager for ACCPAC.

- When the installation is complete, click the Finish button to close the Installation Wizard.



Chapter 3 - Using the WTS Integration Manager

Running the Export

To export time data from Web TimeSheet to ACCPAC Advantage Series, follow the instructions below:

1. Click on the **Reports** button at the top of the Web TimeSheet screen.
2. Select ACCPAC Link from the side menu.
3. Select the timesheet period or date range for which you want to export time information.
4. Click on the Settings button and enter the tax values for TaxGroup1 and TaxGroup2. The values entered must equal the tax values set up in ACCPAC Advantage Series.
5. If you would like to review the data before running the export, click on the Generate button to generate a report for the time period you specified.
6. Click on the ACCPAC button to export the data to a .csv file that can be opened in ACCPAC Advantage Series.

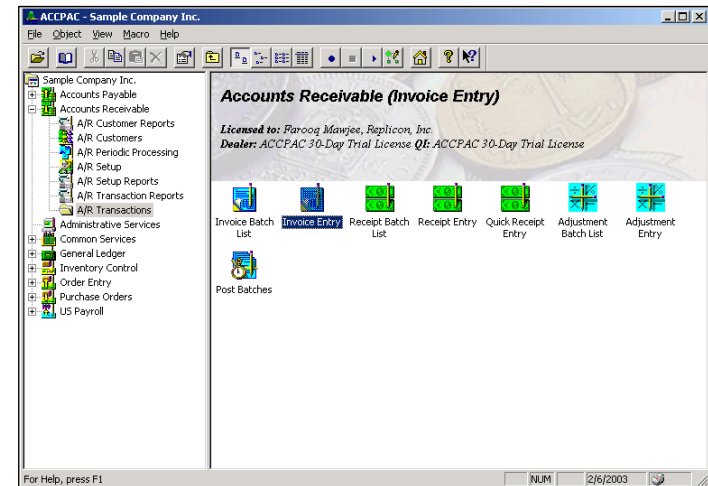
Only data for approved timesheets will be included in the export.

Accessing the Exported Data

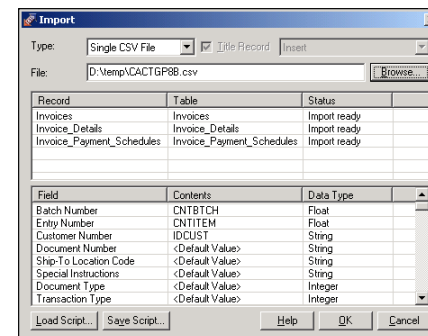
When you export time data, Web TimeSheet creates a .csv file that can be opened in ACCPAC Advantage Series.

To open the .csv file in ACCPAC:

1. Open ACCPAC Advantage Series.
2. Click on the + to expand the Accounts Receivable folder in the side menu.
3. Select **A/R Transactions** and click on the **Invoice Entry** icon (in the main window).



4. Create a new batch.
5. Click on **File** at the top of the screen and select **Import** from the drop-down menu
6. Select "Single CSV File" from the **Type** drop-down list.
7. In the File field, enter the location of the .csv file (complete file path).



- Click the OK button when you are finished. The time data will be imported from the .csv file to the batch in ACCPAC Advantage Series.

Batch Number: 37
Batch Date: 2/6/2003
Detail Type: Item
Entries: 1
Type: Imported
Total: 173.20
Status: Open

Entry Number: 1
Invoice Printed: No

Customer Number: Client1
Ship-To Location: Ship Via

Document Type: Invoice
Document Number: IN00000006
Document Date: 2/6/2003
Year/Period: 2003-02

PO Number: Special Instructions

Order Number: Account/Tax...

Lin.	Item No.	UOM	Description	Quantity	Unit Price	Extended Amt.	Dist.
1	T1P1	HR	Task1P1	8.00000	10.00000	80.00	ITEM
2	T2P1	HR	Task1P1	8.00000	10.00000	80.00	ITEM

Buttons: Save, Delete, Print..., Prepay..., Close

Chapter 4 - Field Relationships

Web TimeSheet to ACCPAC Advantage Series

Web Timesheet (source)	ACCPAC (target)	Constraints
N/A	Batch Number	Created by ACCPAC
N/A	Entry Number	Automatically created during the import process
Client Code	Customer Number	
N/A	Document Number	Automatically created during the import process
N/A	Line Number	Automatically created during the import process
Task Code	Item Number	
Billable Hours	Quantity	
Rate	Unit Price	
Billable Amount	Extended Amount	
Billable Amount	Amount Due	Billable Amount : 1+TaxGroup1+TaxGroup2