

WARRANTY

(Effective January 1, 2007)

HIX will automatically register the equipment on the date it was shipped to you or your distributor. If the equipment was not purchased directly from HIX, but through a distributor (either domestic or foreign), please keep a copy of their sales invoice showing the serial number and date it was sold/shipped to you with this warranty. In this case, we will use the distributor's invoice date as the beginning warranty date. **STAPLE A COPY OF YOUR RECEIPT TO THIS WARRANTY** and keep in a safe place to provide verification of your warranty should a problem occur. Thank you.

Please fill in the following information and attach a copy of your receipt for your records.

Date Purchased: _____ From: _____

Model #: _____ Serial #: _____

This warranty applies to equipment manufactured by the HIX Corporation (HIX), Pittsburg, Kansas, U.S.A. HIX warrants to the original purchaser, its Conveyor Dryers, Heat Transfer Presses, Mug Presses, Mug Glazer, Retensionable Screen Frames, Textile Printers, Spot Heaters, and Exposure Units against defects in workmanship and material, except for wear and tear for a period of "One Year" from the date of purchase. HIX warrants its Accessories, Reten Spines/Hardware/Tool Kit, and Shuttle for a period of 90 days from the date of purchase. DoughXpress and Thermatrol products are covered under separate warranty.

In the event of a defect, HIX, at its option, will repair, replace or substitute the defective item at no cost during this period subject to the limitations of insurance and shipping costs stated below.

In the case of heat transfer presses (except the Mug Press, Hobby Lite), HIX warrants the heat casting for the "Life" of the machine for the original purchaser. If a part becomes obsolete at the time for repair, and/or cannot be reasonably substituted for, HIX will credit, at half the then current list price or last recorded price, only that part toward a new machine or any product HIX offers. This credit offer shall be the sole responsibility of the HIX Corporation in the event of an obsolete part.

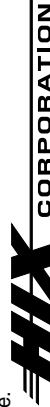
This warranty does not cover belts, pads, mug wraps, mug press liners, canvas, rubber blankets, bulbs, glass, PTFE or finish, rod ends, turn buckles on printers, or mug press or damages due to accident, misuse/abuse, alterations or damage due to neglect, shipping or lack of proper lubrication or maintenance. HIX shall not be responsible for repairs or alterations made by any person without the prior written authorization by HIX. This warranty is the sole and exclusive warranty of HIX and no person, agent, distributor, or dealer of HIX is authorized to change, amend or modify the terms set forth herein, in whole or in part.

In the case of a problem with the equipment identified herein, HIX Corporation should be contacted during regular business hours to discuss the problem and verify an existing warranty. HIX personnel will assist the customer to correct any problems which can be corrected through operation or maintenance instructions, simple mechanical adjustments, or replacement of parts. In the event the problem cannot be corrected by phone, and upon the issuance of a return authorization by HIX, the equipment shall be returned to HIX or an authorized service representative. All insurance and shipment/freight costs are solely the responsibility of the customer, and not that of HIX, and HIX shall not be responsible for improper handling or damage in transit. HIX offers a reconditioning service and a core exchange/credit policy on some models. HIX customer service personnel may be contacted for complete return authorization and reconditioning information.

This expressed warranty is given in lieu of any and all other warranties, whether expressed or implied, including but not limited to those of merchantability and fitness for a particular purpose, and constitutes the only warranty made by HIX Corporation.

In no event shall HIX's liability for breach of warranty extend beyond the obligation to repair or replace the nonconforming goods. HIX shall not be liable for any other damages, either incidental or consequential, or the action as brought in contract, negligence or otherwise.

This warranty gives you specific legal rights and you may also have other rights which vary from state to state.



Manufacturers of the Finest Quality Textile and Graphics Screen Printing and Heat Transfer Equipment

1201 E. 27th Terrace • Pittsburg, KS 66762 • U.S.A.

Web site: www.hixcorp.com • Phone: (800) 835-0606

E-Mail: customerservice@hixcorp.com • Fax: (866) 561-0894

E-Mail: sales@hixcorp.com • Fax: (866) 563-4600

HOBBY LITE

9"x12" Heat Transfer Machine

OWNER'S MANUAL



For Customer Service, Call **1-800-835-0606**
ext. 209, ext. 211, ext. 220, ext. 221 or
Visit www.hixcorp.com

CONTENTS

- Receiving and Shipping 2
- Installation and Preparation 3
- Pressure 3
- Transfer Application 4
- Maintenance & Repairs 5
- Parts Identification (Exploded View / Parts List) 6-7
- Warranty 8

BEFORE warranty repair you MUST get Prior Authorization:
Call **1-800-835-0606**

RECEIVING AND SHIPPING

INTRODUCTION

Congratulations on your purchase of the Hobby Lite heat transfer machine. Three simple variables are involved in the process of transferring an image: pressure, temperature, and time. Pressure is easily controlled and adjustable. Temperature is as simple as setting your temperature control to the setting of your transfer.

Your Hobby Lite is designed for utility and fun in the application of heat applied graphics. The Hobby Lite is not designed nor intended for high volume or commercial heat press applications. The press is designed to tilt forward on closing, if too much pressure is set. If you experience tilting forward upon closing simply reduce the pressure adjustment setting.

INSPECTION

After unpacking, inspect your machine for hidden shipping damage. Contact the delivery company immediately, should you find damage.

SHIPPING OR RETURNS

NOTE: Save all of your shipping/packing materials.

DO NOT RISK COSTLY SHIPPING DAMAGE!
SHIP ONLY IN ORIGINAL BOX. Another box may be obtained by calling the number on the front of this manual.

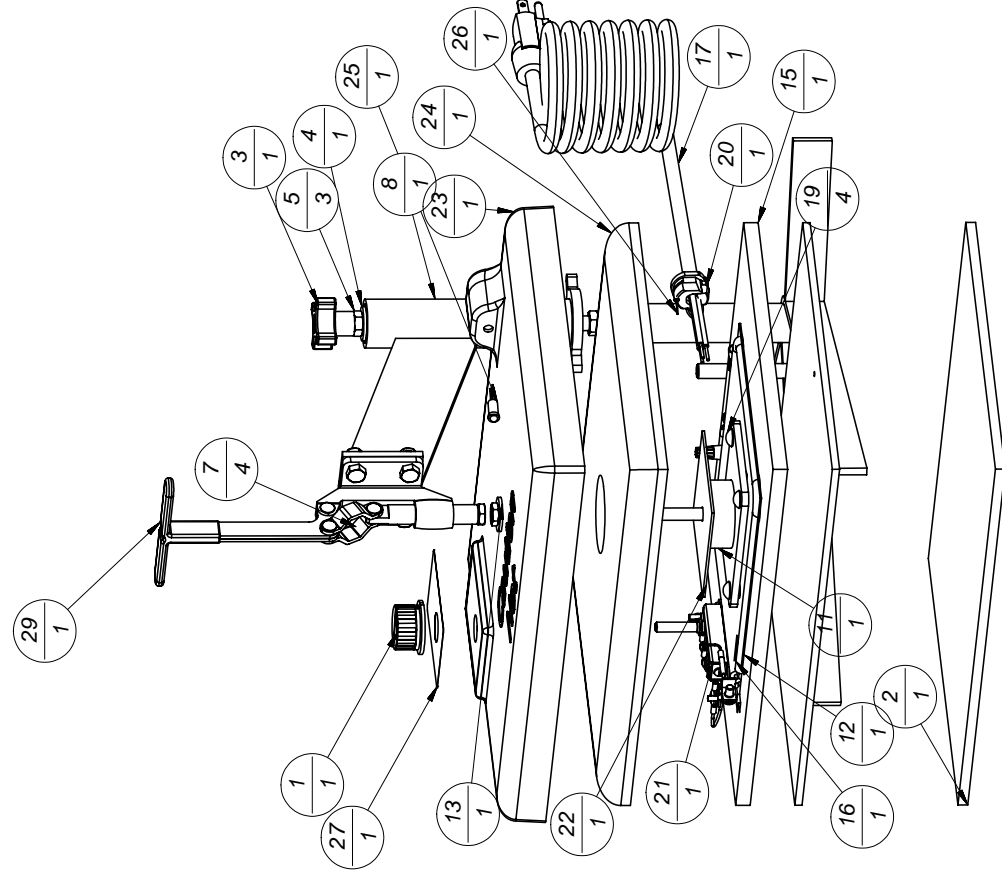
1. Fasten machine to shipping base.
2. Make sure heat platen is securely clamped down.
3. Place in original box. Secure all original packing materials. Fold in flaps and seal the box.

INSTALLATION

1. Plug the machine into the correct grounded electrical outlet. In order to prevent electrical shock, make sure that the electrical cord does not come in contact with the heat platen at any time.

WARNING: When using an extension cord, use 12 or 14 ga.-3 conductor. Maximum length, 25' (7.62 m).

PARTS IDENTIFICATION



PARTS IDENTIFICATION

Parts List

ITEM	QTY	PART NUMBER	DESCRIPTION
1	1	94854	KNOB (THERMOSTAT)
2	1	9125022	PAD, SILICONE
3	1	49182	KNOB
4	1	16683	WASHER 5/16 USS ZP
7	4	10678	BOLT 1/4-20 x 3/4 ZP
8	1	9125604	ASSM, HOBBY LITE ARM
9	1	9125513	Hobby Lite base Weldment (short)
10	1	9125505	HL UPPER PLATEN ASSY
11	1	9125510	HEAT SHIELD SPACER MED
12	1	9125509	HEAT REFLECTOR NO FLANGE
13	1	16683	WASHER 5/16 USS ZP
15	1	9125508	PLATEN, HL UPPER, grooved
16	1	50159	HEATER, TUBULAR
17	1	60590	CORDSET
18	1	9125507	PLATEN STUD ASSY.
19	4	59890	SCREW, DRIVE #14x1/2 TYPE U
20	1	13250	CORD GRIP
21	1	35150	THERMOSTAT HL912 1.75 HIGH 400 DEGREE
22	1	9125506	WASHER, SQUARE, HAYSITE
23	1	9125501 black	HL HEAT SHIELD
24	1	9125406	INSULATION
25	1	35173	LIGHT, LED
26	1	35165	RESISTOR, 22K 1 WATT
27	1	35157	DECAL TEMP 400 DEG
12.33	1	67660	FUSE TERMINAL
12.35	1	68497 HL fuse wire	FUSE WIRE
12.36	1	59756	CONNECTOR, BUTT 22-16GA
28	4	17111	NUT HEX LOCK 1/4-20 NCZP
29	1	35211-3	CLAMP TOGGLE HL
19	1	9125029	SCREW ADJUSTMENT 3/8-16 x 4.5"
20	1	36242	NUT HEX M8 X 1.25 ZP
21	1	50170	PLATEN, HOBBY LITE

OPERATION

BREAK IN

Your new press does not require any “break in”. However, you may notice your press will have an “unusual odor” when you first begin to use it.

This is **normal** and it is the “newness” baking off. You may also see a faint vapor, especially if the press has set for a long period of time or if you are in a humid area. It is simply the humidity that has accumulated and is evaporating from the insulation.

PREPARATION

1. Move on-off/thermostat switch to desired temperature. Heat indicating light should come on. While machine is heating (approx. 15 minutes), the heat light will remain on, until it has reached set temperature, after which it will go off. The heat light will cycle on and off in order to maintain the desired temperature.

WARNING: The heat platen can cause severe burns. Do not leave the machine on and unattended. Make sure all persons and items (not being transferred) are out of the path of the heat platen.

PRESSURE

1. The pressure control knob, located on the top of the machine, should be set so that the heat head will lock down firmly. From time to time you should reset the pressure.
2. Pressure is reduced by turning knob (with machine open) **counterclockwise** and increased by turning it **clockwise**.

NOTE: Adjustments may be required from one garment to another and will vary to achieve the desired result.

CAUTION: Excessive pressure is unnecessary and can cause structural damage, voiding the machine warranty!

OPERATION

TRANSFER APPLICATION

1. Check your transfer paper instructions to get the proper guidelines on temperature, pressure, pressing time, and whether to peel the transfer hot or cold.
2. Swing the heat platen all the way out making sure not to come in contact with the electrical cord or any other item.
3. Align garment (or other item) on the lower platen and swing heat platen back and clamp down to test your pressure setting. **NOTE:** Wrinkles may also be removed by bringing heated platen in contact with the garment before the transfer is positioned.
4. Swing heat platen back out and position your transfer where you want it to appear on the garment (or other item) with printed side down. (Make sure that you have “mirrored” your image before printing out the transfer).
5. When doing double sided or sublimation transfers on garments, always place a sheet of paper or cardboard between the layers of garments so that bleeding through or reheating of the transfer already applied does not occur.
6. Pull operating handle down locking the machine closed. After the designated time has elapsed, open the machine.
7. When not transferring, leave the heat platen up in order to prevent excessive wear on the silicone pad.

MAINTENANCE & REPAIRS

CLEANING THE HEAT PLATEN

1. Unplug the machine and allow to cool.
2. Swing the heat platen away for easier access.
3. Use a soap or detergent and nonmetallic scrubbing sponge to remove any excess material from the heat platen.

LUBRICATION

1. Every 3 months, lubricate moving parts with ordinary household oil.

THERMOSTAT

1. If there is little/no heat or the machine overheats, your thermostat may need replaced.
2. Call HIX customer service at 620-231-8568 or visit www.hixcorp.com for instructions. Parts ordering is available on-line.