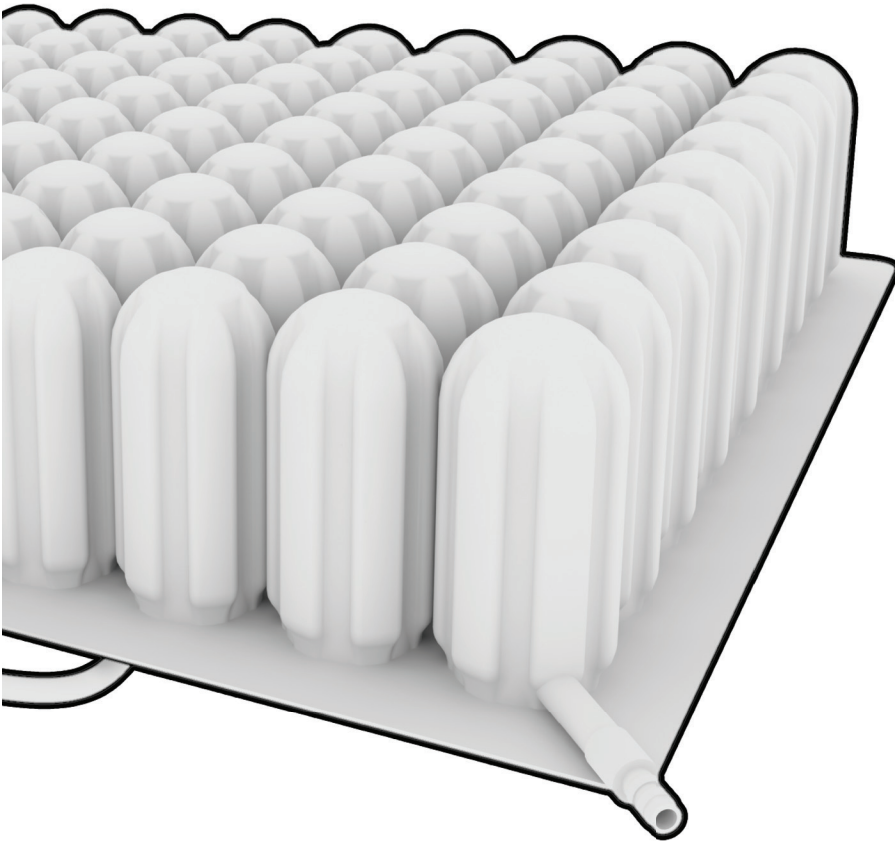


User manual

# STARLOCK





## Content

|   |    |
|---|----|
| About this manual.....                                    | 3  |
| The Starlock cushion.....                                 | 4  |
| 1 Warnings.....   | 5  |
| 2 Important parts.....                                    | 6  |
| 3 Use.....  | 8  |
| 3.1 The right amount of air.....                          | 8  |
| 3.2 Activate Starlock mechanism.....                      | 13 |
| 3.2.1 Locking Starlock for Stability.....                 | 13 |
| 3.2.2 Locking Starlock for localised pressure relief..... | 15 |
| 3.3 Cleaning instructions.....                            | 18 |
| 4 Warranty.....   | 19 |



## About this manual

This manual contains information on the operation and maintenance of your Starlock cushion, you must fully read these instructions before use .

Star Cushion Products Inc and Careways International BV are not responsible any negative results if the instructions are not followed

If you have additional questions, please contact Careways or your nearest local supplier of rehabilitation products.

Careways International B.V  
Angstelkade 2A 3.1  
3631 NA Nieuwersluis  
Nederland  
Tel: +31 (0) 294 458 400  
Fax:+31 (0) 294 458 410



## The StarLock cushion

Air cushions are proven to offer the most effective relief from pressure.

The Starlock is available in 4 heights; 2"/5cm, 3"/7.5cm, 4"/ 10cm and 5"/13cm.

The Starlock is a unique patented product, it is the only cushion available that can lock individual or groups of cells to create a pressure free zone. Reducing direct pressure is vital in the management of risk areas. Reducing pressure is proven to improve blood flow, improving the skin function to reduce risk and assist the healing process.

As a consequence of the design and quality of the material used in the construction of the Starlock, it does not deflate. Once set, the Starlock maintains it pressure relief, eliminating costly and time consuming maintenance.

The control of shearing forces is vital in the management of pressure care. The Starlock can be tailored to optimize the seating position of the user, minimalizing the impact of shear

Posture is also vital in the management of pressure. Incorrect posture can lead to unequal pressure distribution increasing the possibility of tissue damage. The Starlock actively manages position by putting the user in control of their posture.

### StarLock:

- Excellent pressure distribution
- Ability to create "pressure free" zones
- No air loss
- Very stable so reducing shear forces
- Dynamic and unique positioning capability

\* It is important to recheck your cushion at least once every 2 weeks to ensure it is correctly maintaining support.

## 1 Good practice guideline



**Always check your cushion daily, if it is set correctly and operating properly.**



**Remove any sharp objects in your pockets. We strongly recommend that you keep all pets away from your cushion.**



**Avoid extreme heat and keep away from heat sources.**



**Always use the valve, bulb and pump as supplied with your Starlock cushion.**



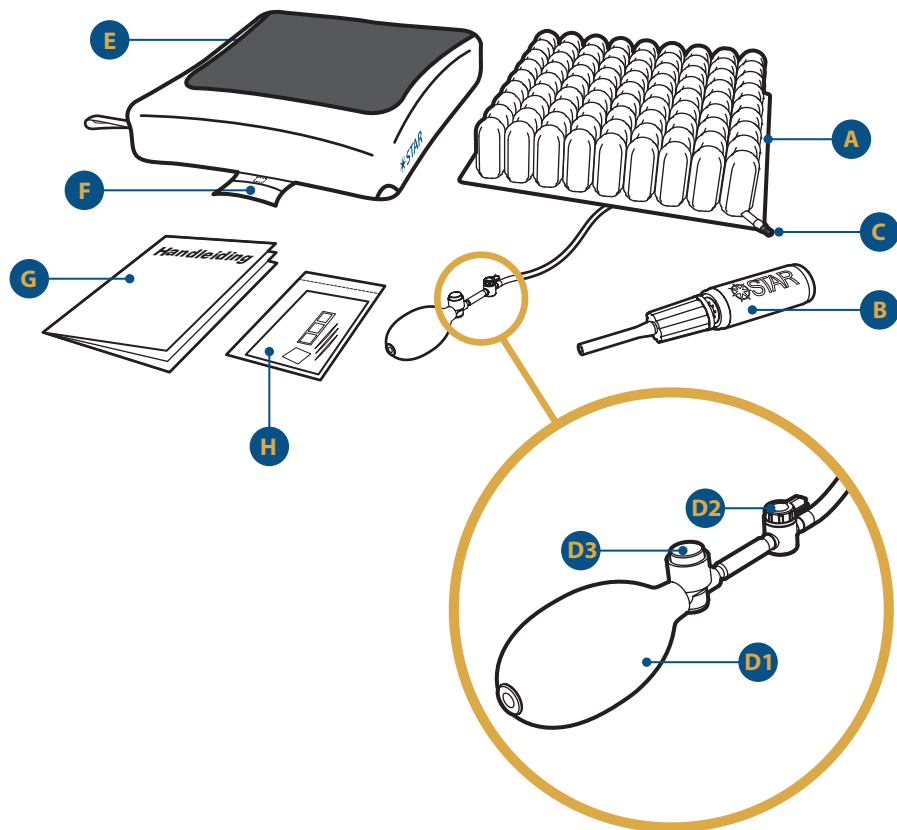
**Do not let the surface of the cushion come into contact with lanolin or oil based creams/lotions.**



**The cushion should not be used as a toy or a buoyance aid.**

*Should the cushion lose air or cannot be set correctly, please contact Careways International B.V. or the nearest local supplier of rehabilitation products.*

## 2 Important parts



- A Air cells: each individual cells of the cushion are made of latex free neopreen. Each air cell is connected to each other and will allow air to be distributed evenly across the whole cushion.
- B Star-Pump: This is used to inflate the cushion by blowing air into each cell through the valve (see C).
- C Valve: The valve supports the flow of air into each cell. Note: you can only insert air when the Starlock mechanism is deactivated. (D1-D3).
- D1 Using the pump, activates the inflation and setting of the cushion to suit the individual user. Until the Starlock lock mechanism is activated, the air and shaping of the cushion will be only temporary.
- D2 The Starlock block valve: The Starlock block valve controls setting the lock mechanism and only once it has been a quarter turn, will a fixed position be achieved and maintained.
- D3 To deactivate the Starlock, depress the button on the vent of the bulb, thereby allowing free flow of air between the cells.
- E The cover of the cushion is made from a breathable, multi-directional stretch fabric which supports the bodies dynamic shape.
- F Pocket; There is a pocket at the back of the cover where the pump can be stored when not required. This reduces the risk of interference with the setting as well as easy storage when required.
- G Each Starlock cushion comes complete with a user manual. This includes details on how to set up, warranty and contact details for any further support.
- H Repair kit: Minor punctures to your cushion can be easily repaired with the repair kit.

### 3 How to set up the Cushion

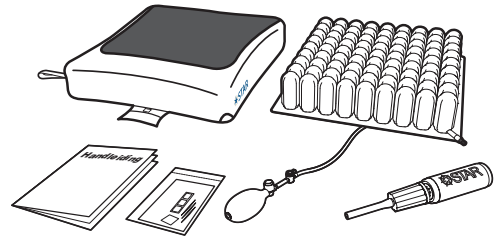


It is important that the Starlock cushion is correctly inflated and checked to avoid any risks of deterioration of skin condition. The following steps are to ensure it is correctly set.

#### 3.1 The right amount of air

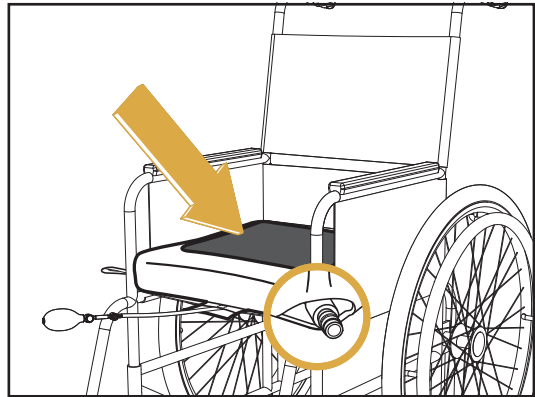
1. Remove the cushion from the packaging and check all the contents.

The cushion should come complete with valve, pump, manual and repair kit.



2. Place the cushion on the seat.

Make sure it is the right side up, fully supported underneath and in the middle of the seat. The valve on the cushion should be at the corner where the left knee is when you sit on it.

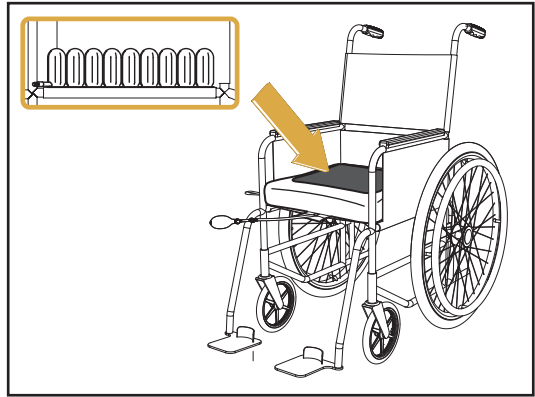






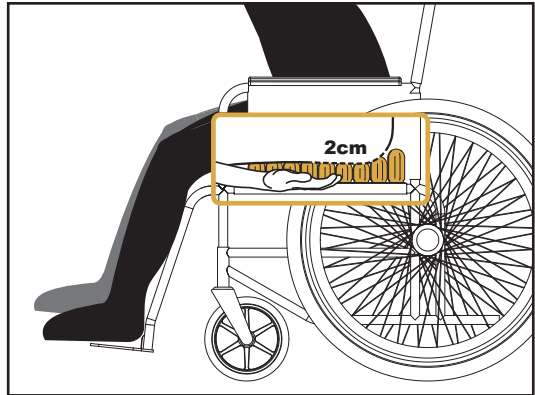
6. Check again that the cushion is positioned centrally on the seat before allowing the user to sit down on it.

The user needs to sit down carefully on the cushion and take their posture.



7. Slide your hand underneath the user to ensure there is a 2cm/1" depth of immersion between the user and the seat.

It is important, particularly around the ischial tuberosity's that there is enough support..

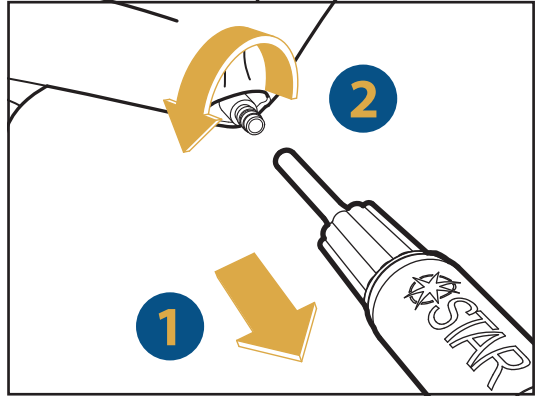


Warning: If there is more than 2cm/1" you will need to remove air ( step 8) if there is less than 2cm/1" you will need to add air (step 9).

**Remove air**

**8a.**

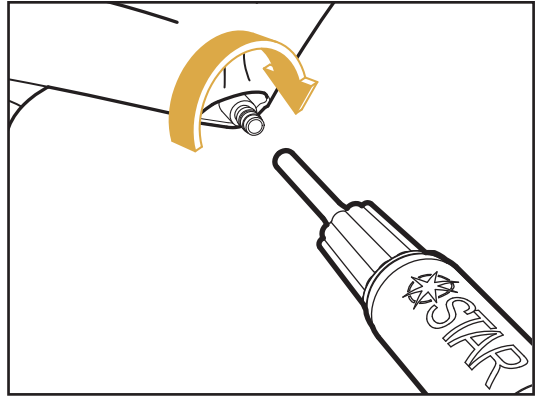
1. Disconnect the pump gently from the cushion. Ensure you hold the valve firmly between your fingers as you do this to avoid any damage to the surface connections on the cushion.
2. Turn the valve anti clockwise a quarter turn and gently let air out of the cushion.



**8b.**

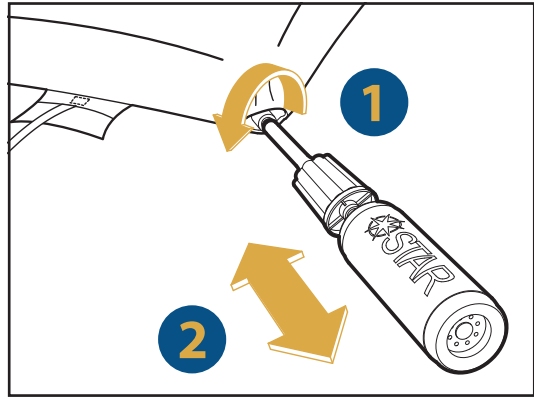
Check again under the user until there is 2cm/1" space between the user and the bottom of the seat.

Make sure the area around the ischial tuberosity's is checked.

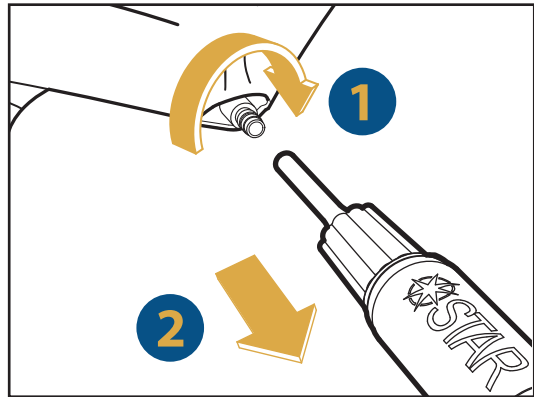


### Adding air

- 9a.** Turn the valve anti clockwise a quarter turn and pump more air into the cushion, until there is 2cm/1" between the user and the bottom of the cushion. The user can sit on the cushion during pumping.



- 9b.**
1. Close of the valve clockwise.
  2. Disconnect the pump gently from the cushion. Ensure you hold the valve firmly between your fingers as you do this to avoid and damage to the surface connections on the cushion.



## 3.2 Activate Starlock

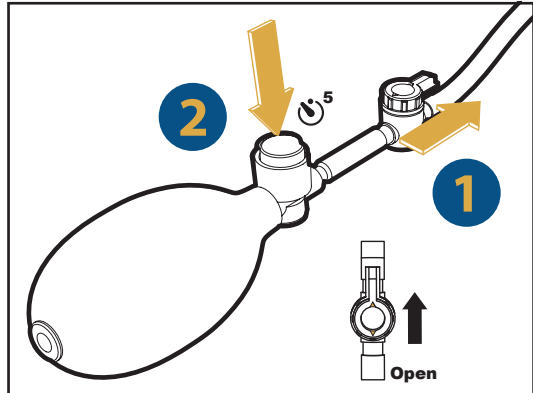
The Starlock system should not be activated until the user and cushion has been correctly positioned in the chair and you have completed the above steps to ensure there is the correct amount of air.



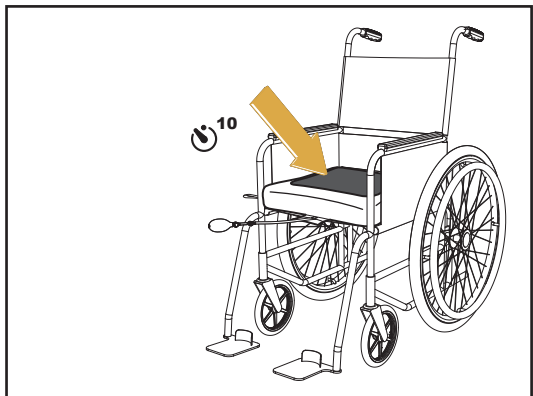
Note: The cushion has a dual function- it can be set to achieve good stability and positioning in conjunction with excellent pressure distribution; alternative it can be set to achieve areas of pressure free zones. To achieve stability and positioning see section 3.2.1 To achieve a pressure free zone see section 3.2.2.

### 3.2.1 Stability and Positioning

1.
  1. Ensure the valve of the Starlock pump is pointing outwards.
  2. Depress the button on the valve for 5 seconds to ensure the lock mechanism is not active.

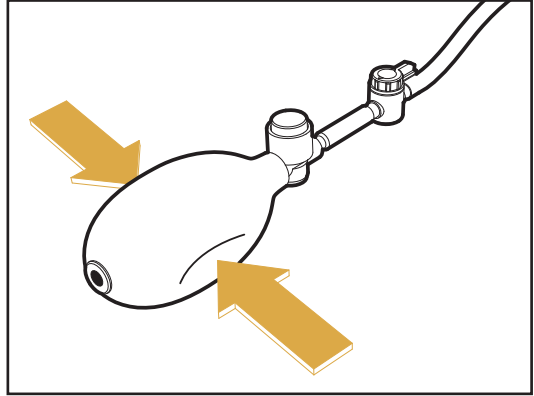


2. Get the user seated comfortably and correctly for at least 10 seconds, to allow the cushion to stabilize and the user get comfortable.



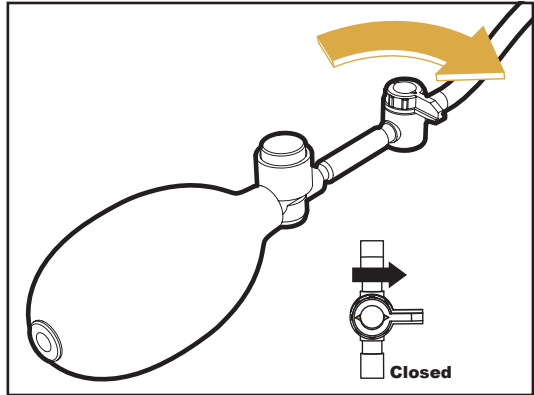
- 3.** Squeeze the bulb several times until there is significant resistance to squeezing further.

This ensures the Starlock mechanism is effectively and sufficiently activate.

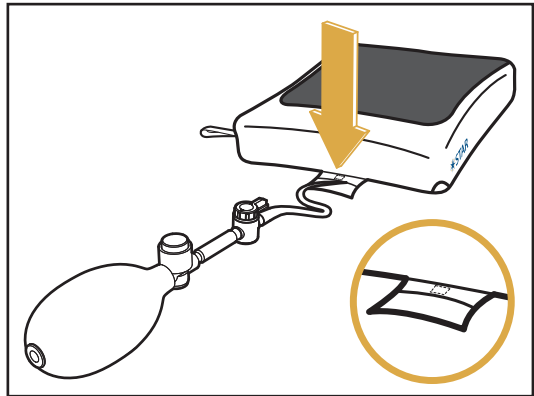


- 4.** Rotate the lever on the valve a quarter once the desired position is achieved.

This locks off the setting and cannot now be accidentally deactivated.



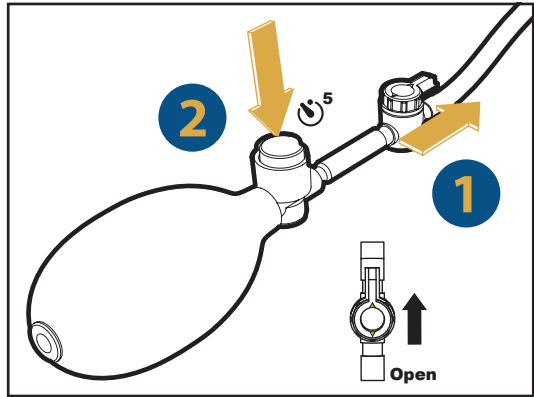
- 5.** Remove the pump, bulb and store in the cushion cover pocket until it is needed again.



### 3.2.2 Locking Starlock for pressure relief

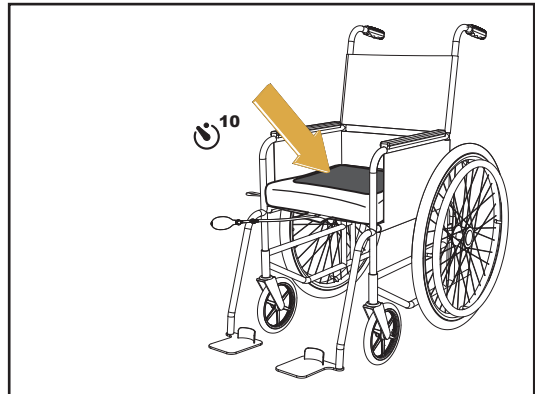
1.

1. Ensure the lever valve of the Starlock pump is pointing outwards.
2. Depress the button on the valve for 5 seconds to ensure the lock mechanism is not active.



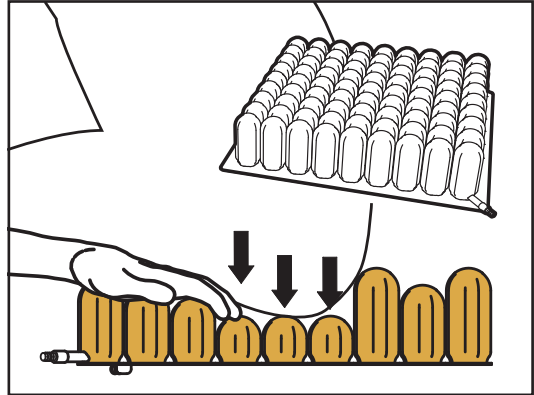
2.

2. Get the user seated comfortably and correctly for at least 10 seconds, to allow the cushion to stabilize and the user get comfortable.



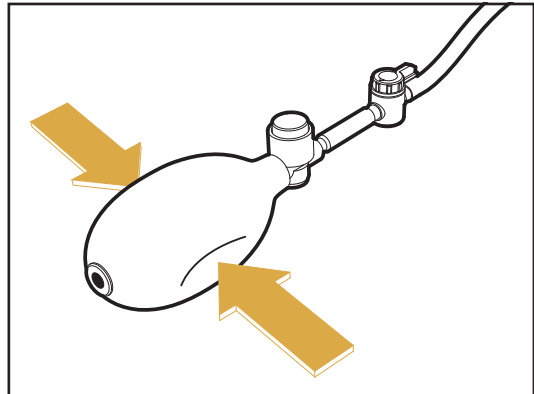
- 3.** Select the cells where no contact is to be created and push down firmly with the hand. This needs to be done with the user sitting on the product to ensure it is the correct area.

Tip: If it is a diffuse area to reach, you can fold a towel or other soft object in the desired area and then get the user to sit on the cushion. This ensures the cells are pushed away firmly flat.



- 4.** Squeeze the bulb several times until there is significant resistance to squeezing further.

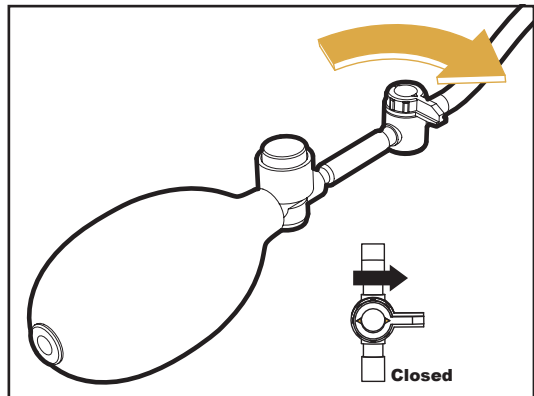
This ensures the Starlock mechanism is effectively and sufficiently activate.



- 5.** Rotate the lever on the valve a quarter once the desired position is achieved.

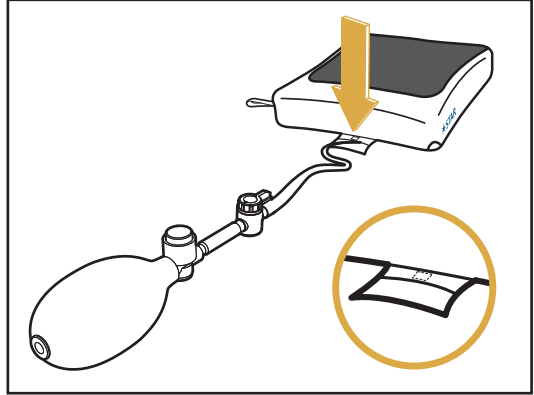
This locks off the setting and cannot now be accidentally deactivated.

Remove your hand or object used and check that the zone is free of pressure and contact.





- 6.** Remove the Starlock pump, bulb and store in the cushion cover pocket until it is needed again.



### 3.3 Cleaning the Star cushion



Note: Cleaning and disinfect are two separate operations. Cleaning must be done for disinfect.

#### Clean the Star Cushion:

##### Cleaning in washing machine:

Gently remove the cover, ensuring the valve is not pulled where it connects to the cushion. Deactivate the Starlock system and allow the cushion to deflate. Close the corner and Starlock valve. Both the cushion and the cover should be placed in a laundry bag before putting into the washing machine. **Do not put the pump in the washing machine.** Only wash for a maximum of 10 minutes and no higher than 60 degrees. The cushion and cover should be left to air dry. Do not use bleach.

##### Hand wash:

Gently remove the cover, ensuring the valve is not pulled where it connects to the cushion. Deactivate the Starlock system and allow the cushion to deflate. Close the corner and Starlock valve and put the cushion in a basin. Use a soft plastic or bristle brush, sponge or wash cloth to clean each cell and space between. Do not use bleach.

##### Cleaning the cover:

Only wash for a maximum of 10 minutes and no higher than 60 degrees. The cover should be left to air dry. Do not use bleach.

##### Repairs:

Protect your Starlock cushion against needles and other sharp objects as well as keeping away from open flame, heat source or cigarettes. If there is a small air leak, you can simply repair with the free repair kit included. Once the plaster has been applied over the hole, check to ensure is a good adhesion between the surfaces so no air can escape.

## 4 Warranty

### **What is warranty?**

Star guarantee this cushion against material and manufacturing errors.

### **How long?**

24 months from the original date of purchase, regardless of any change in ownership.

### **What will be done?**

Any damage as a result of misuse or accidental are not included in this guarantee.

 **STARCUSHION**  
PRODUCTS, INC.

