

USER MANUAL

For 3D Touch Interactive Whiteboard

(Version 1.0.1.1N)

Contents

Introduction.....	3
Hardware Installation.....	5
Calibration Software.....	6
Application Software Installation.....	11
tBoard Software Manual.....	12
Tips.....	16

Introduction

3D Touch Interactive Whiteboard is attached with Projector/LCD and turns any flat surfaces into interactive and collaborative workspace. It is an inexpensive Interactive Solution.

Key Features

- 1, Remote Writing with Laser Pen;
- 2, Automatic Calibration within 4 seconds;
- 3, Screen Size is not limited, Support up to 150";
- 4, Turns LCD Screen into Interactive Whiteboard;
- 5, Portable, Reliable, Simple installation;
- 6, Multi Touch (specific model supports). Two or more users can write on it at the same time

Specifications

Active screen area	40- 150"diagonal
Shipping size	32 cm × 24 cm × 7.5 cm
Shipping weight	1.3 kg
Technology	Optical + Laser technology
Mouse Function	Double click function. Right-click function can be achieved by maintaining the pressure on the board for 2 seconds.
Power	Energy is taken from a computer via a USB cable.
Power Consumption	≤ 1w.
Delay Time	<0.1s
Calibration	Automatic Calibration/ Manual Calibration
Installation	The possibility of ceiling mounted (bracket included)
Active Screen	40- 150" diagonal
Computer Connection	Included is a 8-meter USB cable
Software	Calibration Software, Whiteboard Software
Product Certificates	CE, FCC
Approvals	ISO9001
Warranty	The calibration device has a 3-year limited equipment warranty. Pens have a 1-year limited equipment warranty.
System requirements	Windows XP / Vista / Windows 7
CPU	1 GHz
RAM	512 MB

***Package Includes**



Calibration Device



8m USB Cable



CD



Hardkey



Infrared Pen (short style)



Laser Pen



Ceiling Mount

Battery size for infrared pen: 2 pieces, AAA (non included)

Battery size for laser pen: 1 pieces, CR2032, 3V (non included)

Accessory



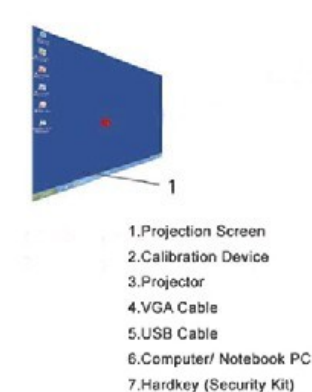
Pointer (Optional)

*Package will vary depending on the orders

Hardware Installation

Install Calibration Device

Install the Calibration Device to the ceiling with the mount and the distance to the front of the projection screen / surface (based on 80" Projection Screen) should be approximately 2.5- 3m (for Long Throw Model) or 1.2m (for Short Throw Model).



Turn LCD TV screen into interactive: Connect the computer with the LCD TV through VGA cable and then follow the following steps.

✓ **Please note: If there is already a Video Camera/Webcam in the computer/Laptop, please disable it**

Connect Calibration Device

Connect the Calibration Device to the Computer (Laptop) with USB Cable as like Picture 1 and Picture 2. (Plug USB Cable into one of **back** ports of computer. For Laptop, extra power may be needed



Picture 1



Picture 2

Then plug the key to the Calibration Device (as like Picture 3) or the computer (as like Picture 4).



Picture 3



Picture 4

Calibration Software

Calibration

Step 1: Place the small software CD-ROM into the CD drive and copy the “Calibration Software” and “IWB Application Software” folder in the CD-ROM onto your PC’s hard disk drive.

Please Note: do not RUN the software from the CD.

Step 2: Open the file “Calibration Software” and double click 3D_IWB. exe.

Then viewing window appears.



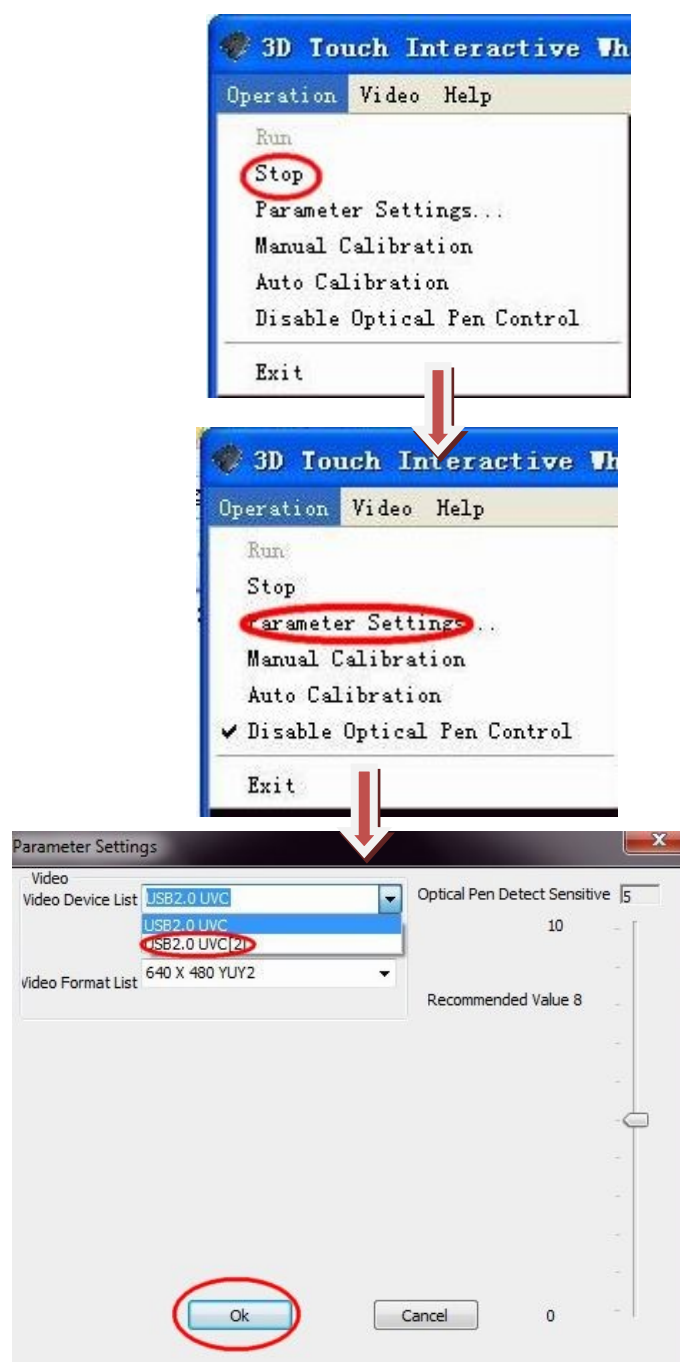
Step 3: If the mouse becomes mad and is out of control. Please use the hand to shade the device (or pull out USB cable from the computer). And then choose “disable Optical Pen Control”.



Next, please connect USB with computer again and keep adjusting the location or angel of calibration

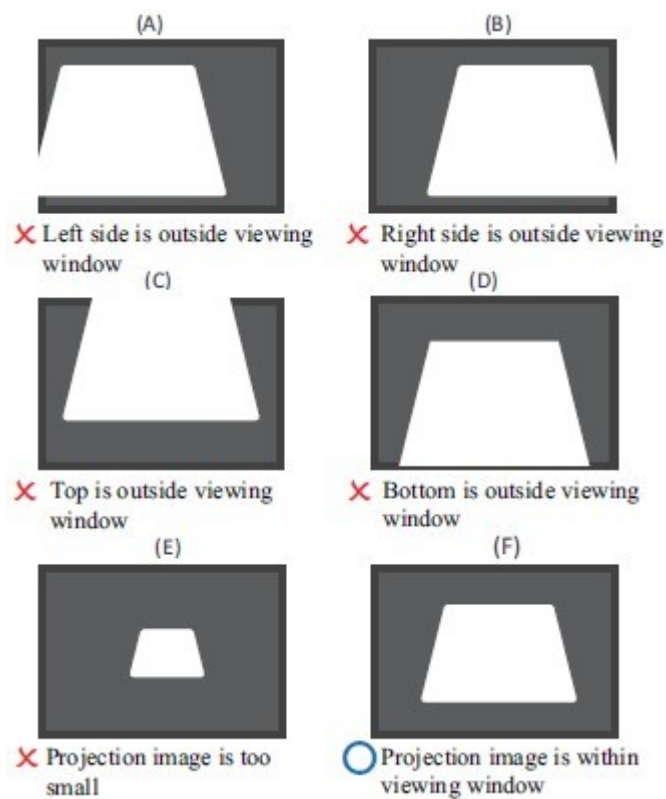
device or move any strong light until there is no green dot or box in the viewing window. **Please note: If there is any green box in this red screen, calibration will not work.**

If the image in the viewing window is from other camera (this problem happens when other camera device is working), please follow this guide:





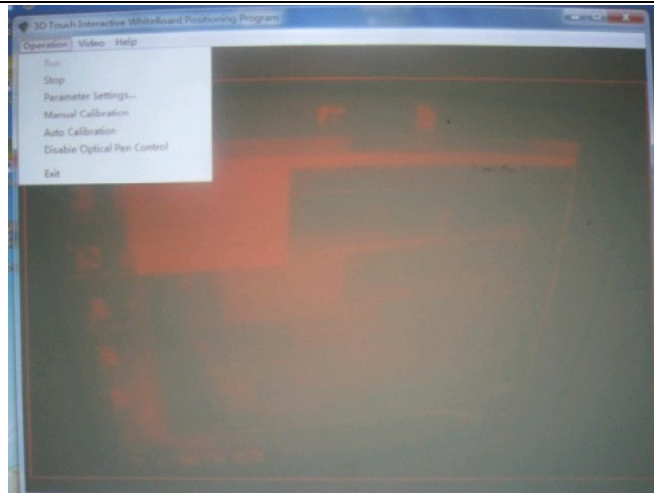
Step 4: Make sure the whole projection image/LCD image should be able to be involved in the viewing window
(see Picture 7)



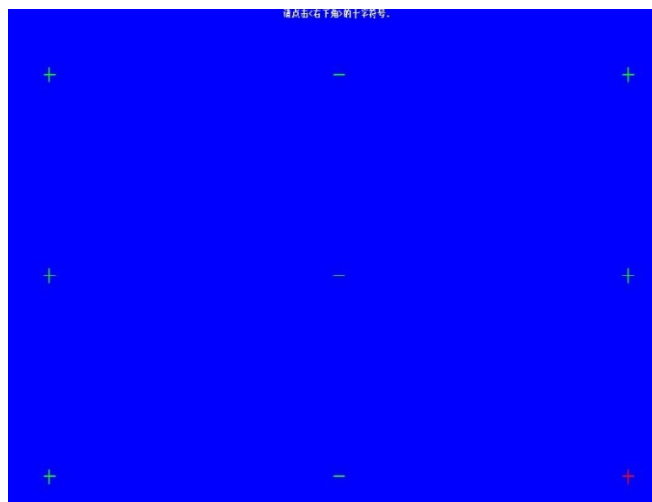
Picture 7

Step 5: Manual Calibration

Open “Operation”—Choose “Manual Calibration”, and complete the total 9/36 calibration points to finish the calibration (see Picture 10, 11)



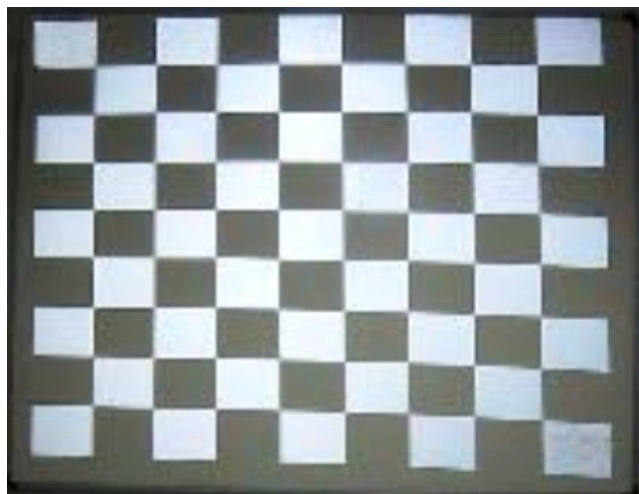
Picture 10



Picture 11


Automatic Calibration

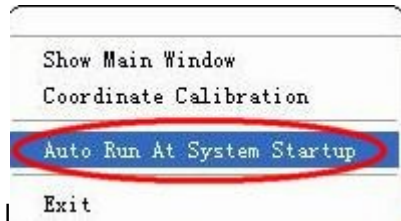
“Operation”—Choose “Automatic Calibration” and it will automatic complete the calibration within 4 seconds (see Picture 12)



Picture 12

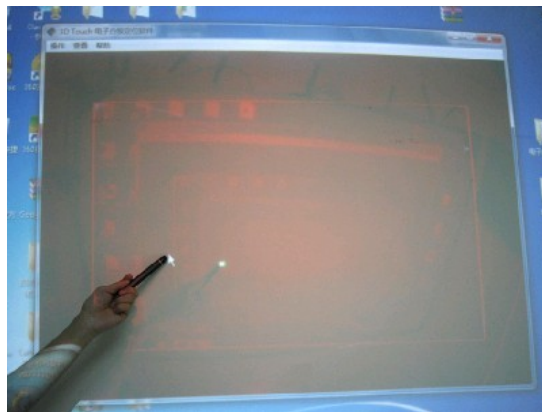
Step 6: After Automatic Calibration finished, Viewing Window will be minimized in the right corner of the computer.

Step 7: To make the device run with system start. Please right click the Icon . And select "Auto Run At System Startup"



Tip: No need to calibration again when the projector and signal device are not moved.

Now you could control the computer from the projection screen.



Picture 13

Application Software Installation

Step 1: When system is Windows Vista or XP, please place the big software CD-ROM into the CD drive and copy the “DotNetFX35” folder in the CD-ROM onto your PC’s hard disk drive. (Please skip this step with Windows 7)

Please Note: do not RUN the software from the CD.



Step 2: Open the “DotNetFX35” and then run .



Step 3: Open the folder “IWB Application Software” and run , There will be a icon of tBoard



on the desktop.

Now the Application software of “tBoard” is installed.

Step 4: Open the “IWB Application Software” and install “Handwriting Recognition”.

tBoard Software Manual

Double click the icon of tBoard from the desktop.

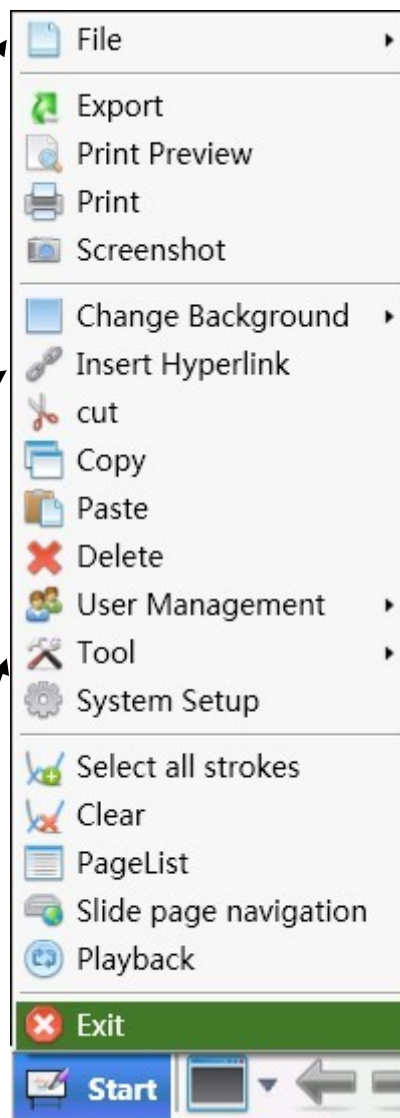
Start Menu Introduction

Click the menu , then the tool list will pop up, click the option according to the different needs.

The File menu: including the "New, Open, Save, Save As" Support open " PTS, PDF, Word, Excel, PowerPoint and other file formats.

Insert Hyperlink: including the " Web Page, Disk File and Documentation Page"

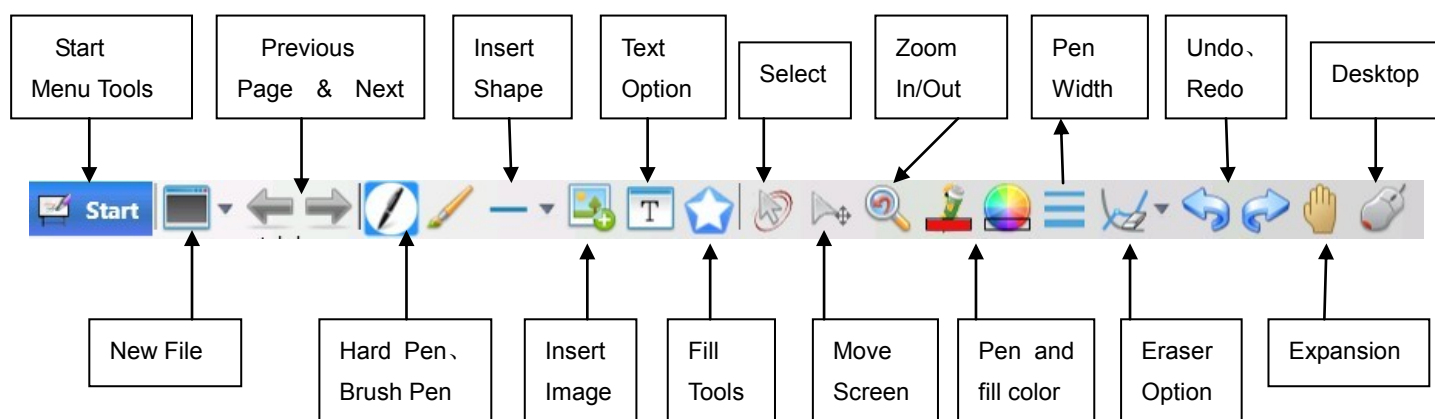
Tool Group Includes: Protractor, Triangle, Ruler, Timer, Media Player, Vide Capture, Mask, Magnifying glass, Spotlight, Keyboard, Calculator, Handwriting Recognition, Screen Recording, External tool Management.



Export: the current page could be exported as the format of PNG, JPG, BMP, ISF and XPS.


Change Background: used to change the background of current page.

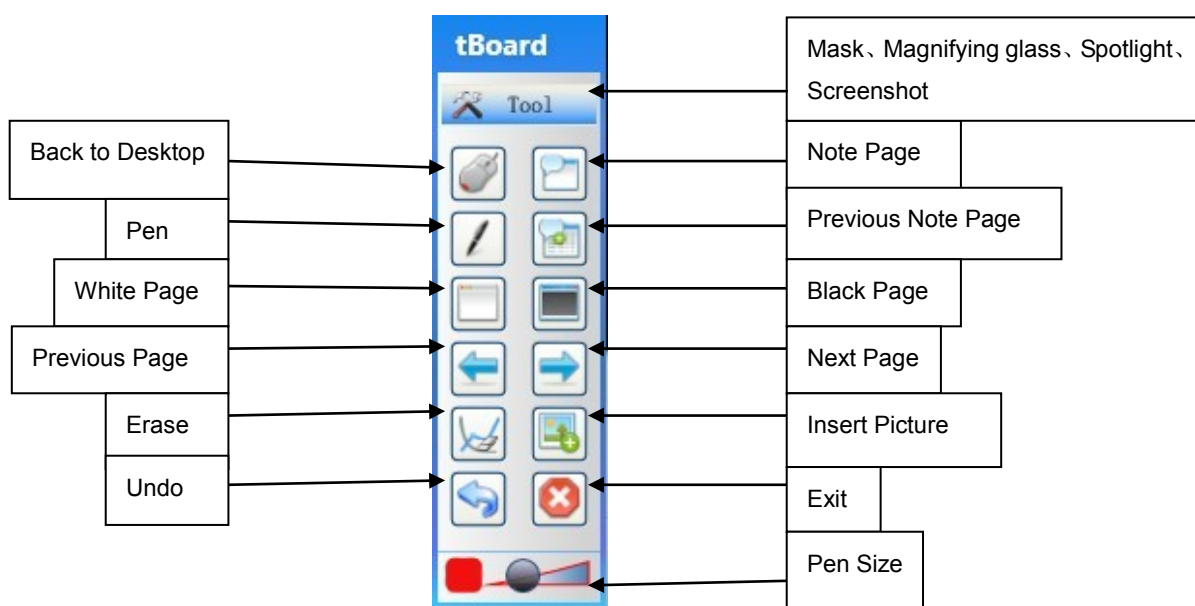
Slide page navigation: users will be required to open the slide and enter the "View Show" status under the desktop status, click on the function keys then the Annotation, page up and down could be achieved.



Minimize the Toolbar Introduction



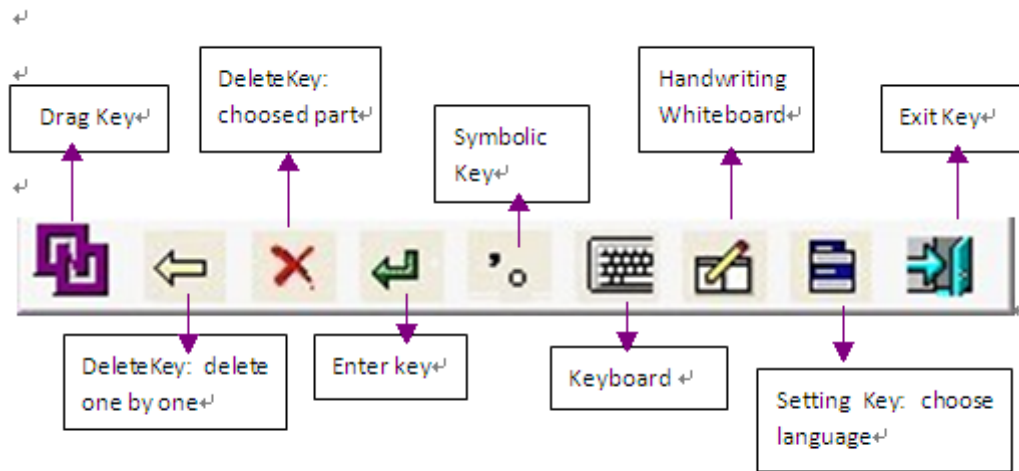
Click  to switch to the desktop Mode, then the right side of the desktop will appear Minimize toolbar, the following is a description of each button:



Handwriting Recognition

Step 1: Start the handwriting Recognition from "Tool" list of tBoard.

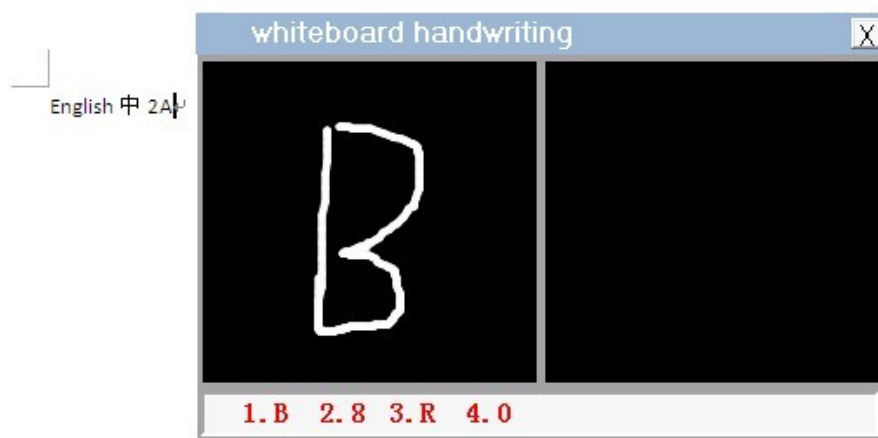
It will appear toolbar.



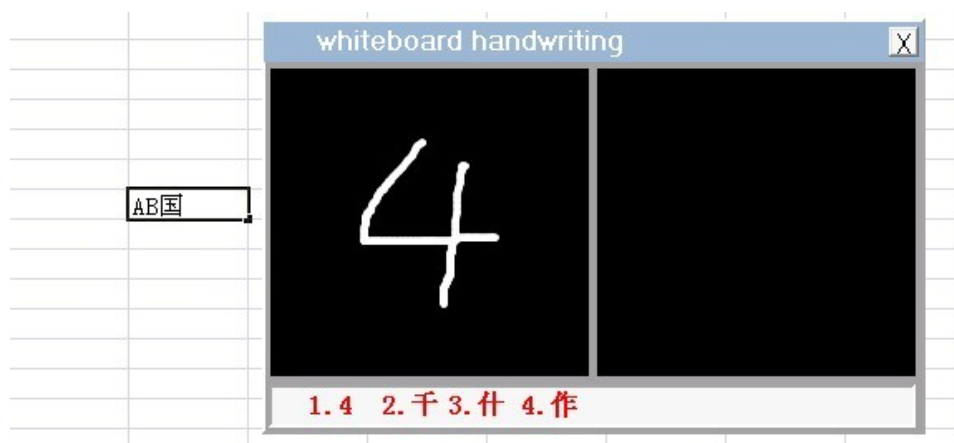
Step 2: Using the Handwriting Recognition in Word file, Excel file and tBoard.

In Word and Excel file

Open the Word and Excel file from computer procedure and you will use it as like the Picture 1 and 2.




Picture 1



Picture 2

In tBoard

Click  in the tBoard and make a text input window like picture 3



Picture 3

Virtual Keyboard

Step 1: Open the “Handwriting Recognition”, then click the virtual keyboard in the toolbar.



Step 2: The soft keyboard could be used in the Word file, Excel file and IE, etc

Multi-writing Trial Version

Before making multi writing demo, please Find the folder “Calibration Software” and run



Tips

- 1, The range of light Sensitivity should be **5-8**. If too high, the mouse will be out of control. If too low, the pen may not response well with operation.
- 2, The distance between Calibration Device to the screen (based on 80" screen):
 - Around 2.5-3m (for long throw model)
 - Around 1m (for short throw model). The whole projection screen should be involved in the red screen. Set the sensitivity (Please check No 1) according to the environment and make sure there is no any spot/Green dot in the red screen.
- 3, Best Installation way: Install the Calibration Device on the ceiling and there is no block between the tip of pen and receiver. If the Calibration Device cannot be installed on the ceiling, please make sure there is no block between the tip of pen and the Calibration Device when operation, like user's body or hand. If there is block, interrupted lines would happen during writing.
 - (Remark: if battery is not available, interrupted lines would happen during writing too.)
- 4, Hold the infrared pen at an angle of 30 – 45° to the projection surface. (No requirements for short throw model)
- 5, Use Infrared Pen to process the calibration. Place the pen tip at the center of the cross, and then press.
- 6, Operate right click function: pressure the infrared pen for 2 seconds.
- 7, USB cable has to be plugged into the port in the back of Computer Box. And extra power may be necessary when signal device is connected with Laptop.
- 8, If the software screen is not red, click "stop" and set another camera in the list of device, then choose "start" again.
- 9, If it is failed to open the software, please check hardware key and sometimes you need restart it or try other port.
- 10, If the green dot doesn't move with the operation, please check the frame data of calibration software. When the frame per second is below 25, it means the computer doesn't meet the system requirement. A new computer is needed in this situation.