



IAS Navigator for IBM Maximo

User Manual

Document Version [1.1]

Architect: Dmitry Trubach, DTrubach@iba.by

Marketing Contact: Pavel Shkilionak, shkilionok@iba.by

Contents

List of Figures	3
About this Document	4
Who Should Use This Document.....	4
Summary of Changes	4
Executive Summary	5
Chapter 1. Getting Started with IAS Navigator	6
1.1 Supported Technical Environment	6
1.2 Installation	6
1.3 Uninstallation.....	11
Chapter 2. Using IAS Navigator	12
2.1 Introducing IAS Navigator	12
2.1.1 Features	12
2.1.2 Benefits	12
2.2 Using Editor	13
2.2.1 Start Working with Editor.....	13
2.2.2 Using Editor.....	15
2.2.3 Saving Results.....	16
2.3 Solution IAS Navigator.....	17
2.3.1 Preparing Environment.....	17
2.3.2 Using IAS Navigator.....	21

List of Figures

Figure 1 – Installation Package	6
Figure 2 – Setup Wizard	7
Figure 3 – Destination Location.....	8
Figure 4 – Ready to Install	8
Figure 5 – Successful Installation	9
Figure 6 – Completing Setup Wizard	9
Figure 7 – Steps to Be Performed on IBM Maximo Platform.....	10
Figure 8 – Editing XML File	11
Figure 9 – Editor for Image Map with Device Image.....	13
Figure 10 – Downloading XLS File.....	14
Figure 11 – Editor for Image Map with Input.....	15
Figure 12 – Saving Results	16
Figure 13 – Attachments of Application.....	17
Figure 14 – Device with Its Structural Elements	18
Figure 15 – Saving JPG File	19
Figure 16 – Saving XML File	20
Figure 17 – Sample Scenario	21

About this Document

This document contains a description of the IAS Navigator component, as well as an installation guide for embedding and running it on the IBM Maximo platform. The first chapter contains a detailed guideline on how to prepare the environment for using the solution. The second chapter contains information about features and benefits of IAS Navigator complemented by a description of working with editor, and an example of IAS Navigator usage.

Who Should Use This Document

The document is primarily designed for system administrators, deployment managers, and specialists, as well as for other users of the component.

Summary of Changes

The section summarizes the changes introduced to the version 1.1 of the IAS Navigator plugin:

1. Fixed bug with disproportional change of image and active area.

When an image scaling takes place, the active areas may increase and become disproportionate to the entire scaled image.

2. Fixed bug with displaying the same image for different items.
3. New functionality is added. Now it is possible to upload and view images without uploading XML file with active areas.

Executive Summary

IAS Navigator component is aimed to overcome a difficulty revealed while working with Item Master Application on the IBM Maximo platform. The difficulty is in identifying separate elements in an assembly device. Standard IBM Maximo resources offer only a table with a list of integral elements. Once a device is complicated and consists of many items, the navigation through this device requires too much time and effort.

To facilitate the entire process of search and correlation, IBA developed the IAS Navigator component. IAS Navigator provides a mechanism to match a graphic drawing of an assembly device and its elements with information about them in the database.

Chapter 1. Getting Started with IAS Navigator

1.1 Supported Technical Environment

IAS Navigator component imposes the following requirements on the environment:

- Java Runtime Environment (JRE) 1.6 or above
- IBM Tivoli Process Automation Engine 7.5.0.2 or above
- IBM Maximo Asset Management Package 7.5.0.2 or above

1.2 Installation

This section describes steps necessary to be performed to install the IAS Navigator component.

- Unzip the installation package.

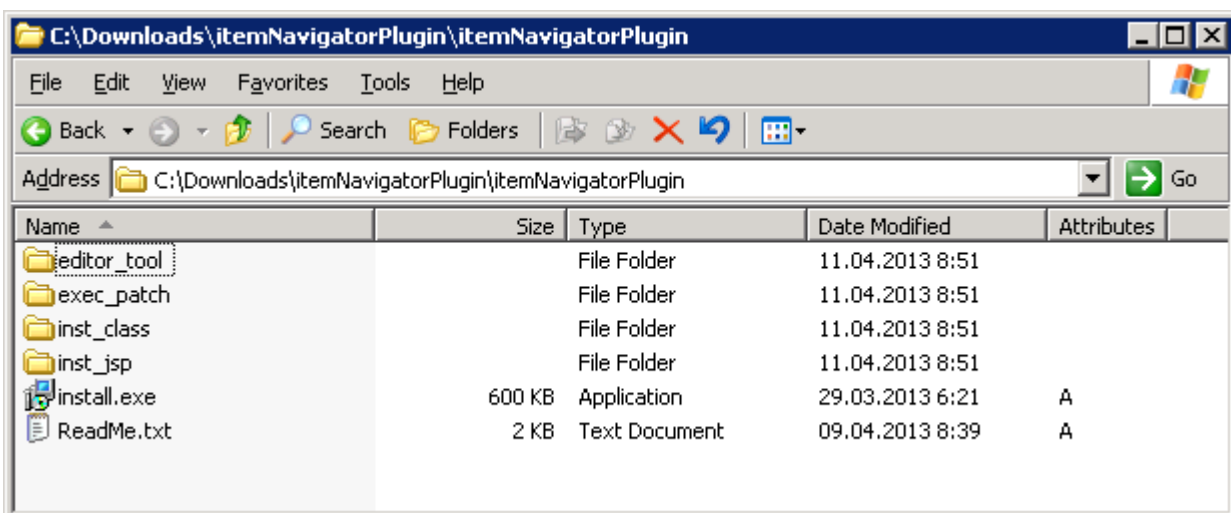


Figure 1 – Installation Package

- Run the installation file **install.exe** and follow the wizard steps to install the component.

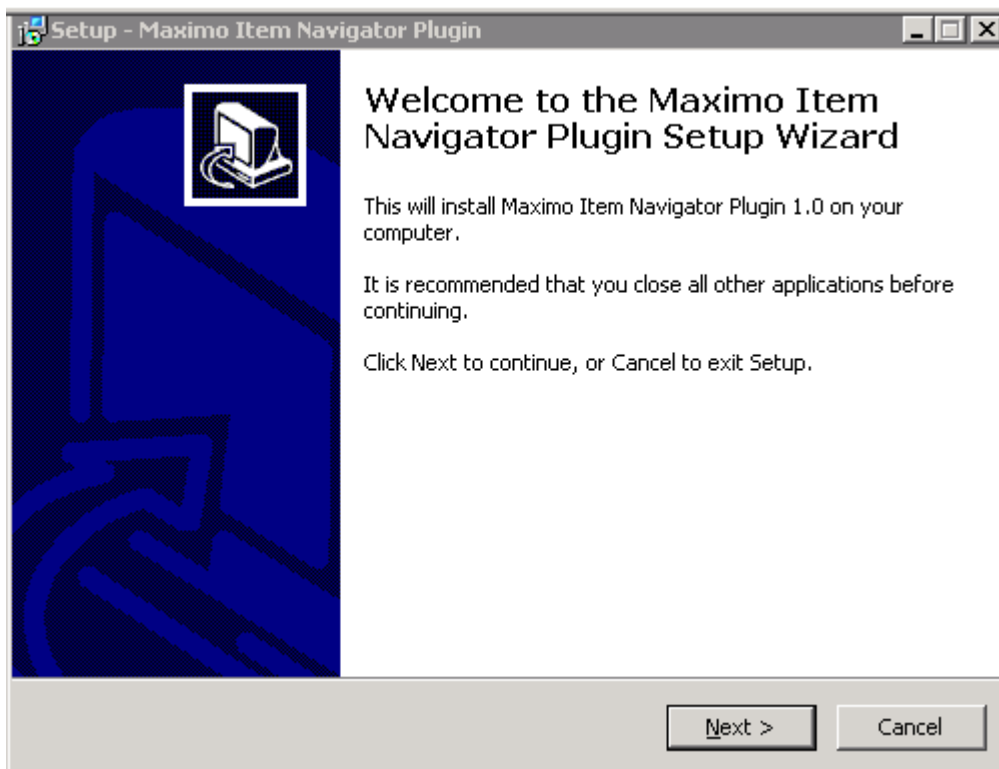


Figure 2 – Setup Wizard

- Select the SMP folder where IBM Maximo is installed as a destination location.

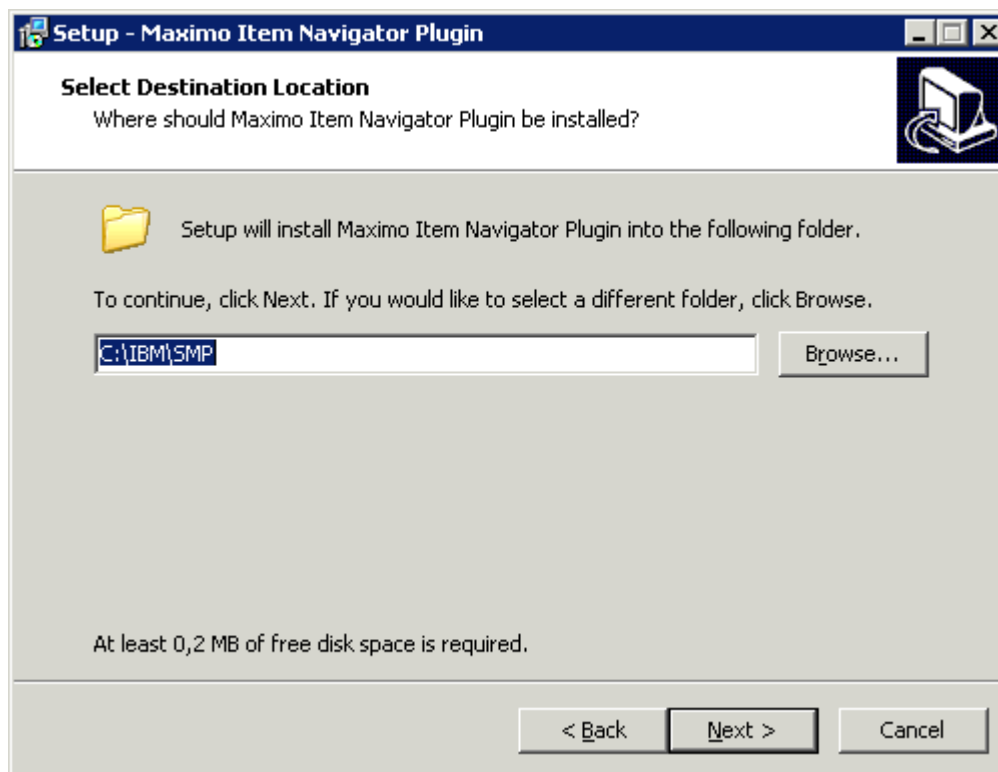


Figure 3 – Destination Location

- The next step is to begin installing the plugin.

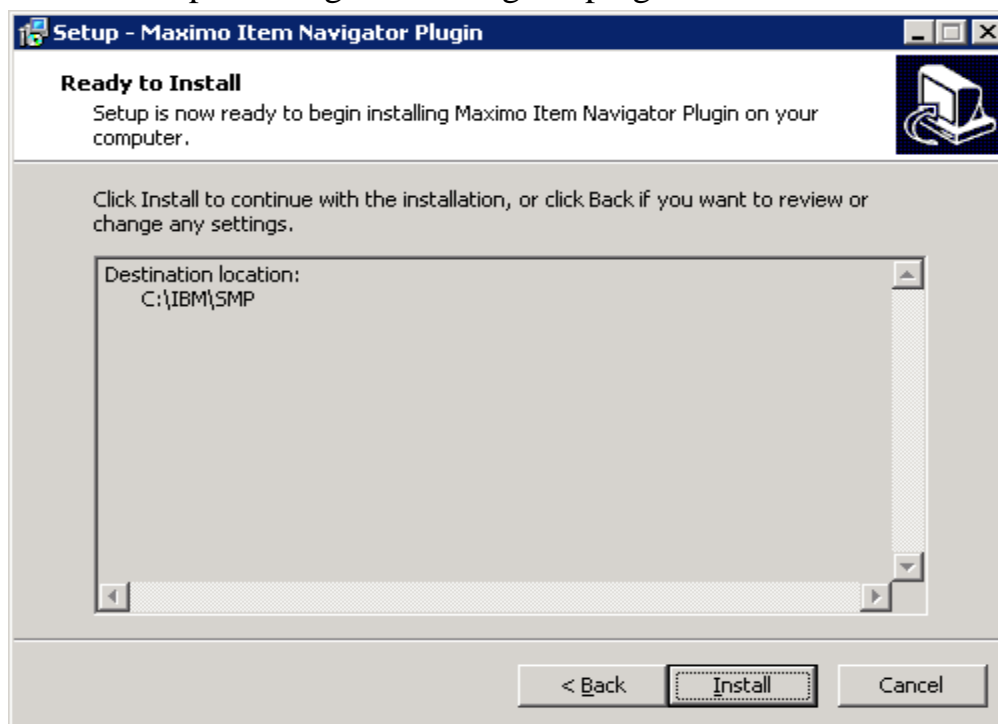


Figure 4 – Ready to Install

- After successful installation the following will be displayed:

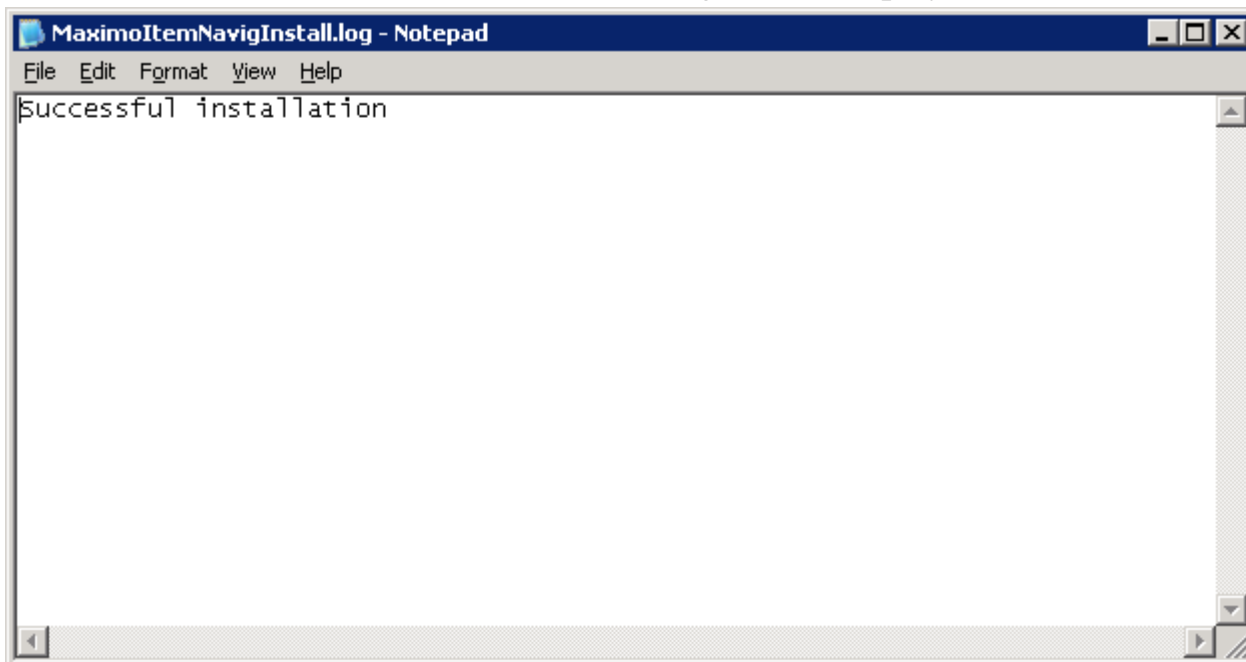


Figure 5 – Successful Installation

- Press the **Finish** button to complete the installation:

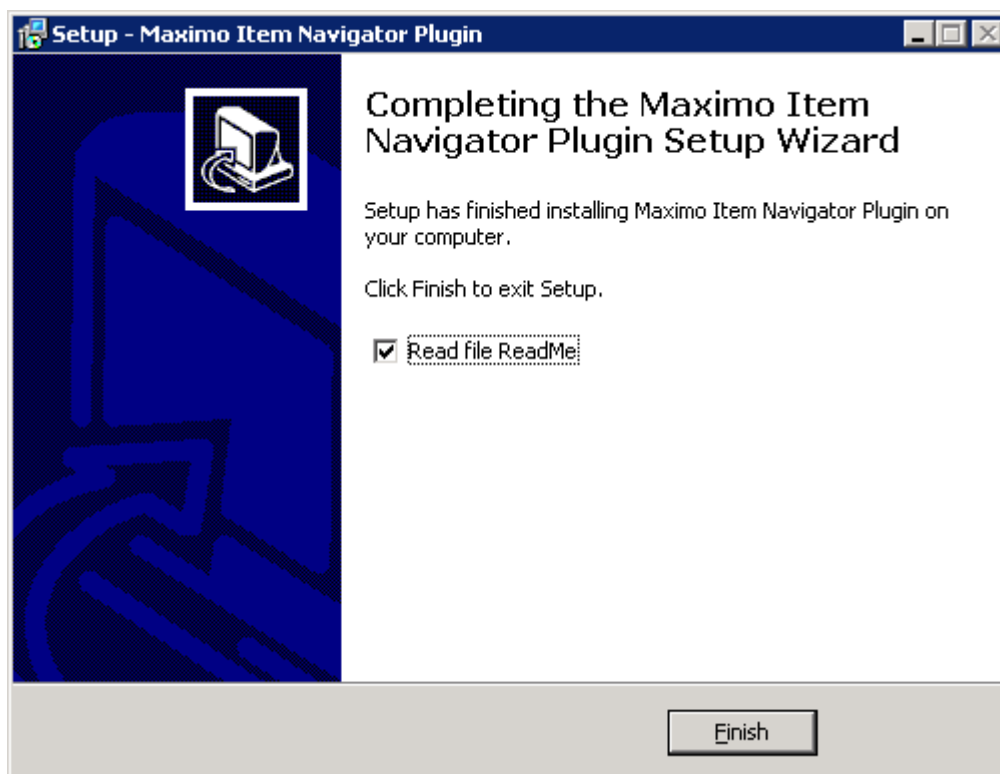


Figure 6 – Completing Setup Wizard

- Rebuild and redeploy the **maximo.ear**
- Perform the following steps on the IBM Maximo platform to start using the solution.

1. Open **GoTo** menu.
2. Find **Application Designer** in the context menu.
3. Open the **Item** application in **Application Designer**
4. Click **Export Application Definition**.

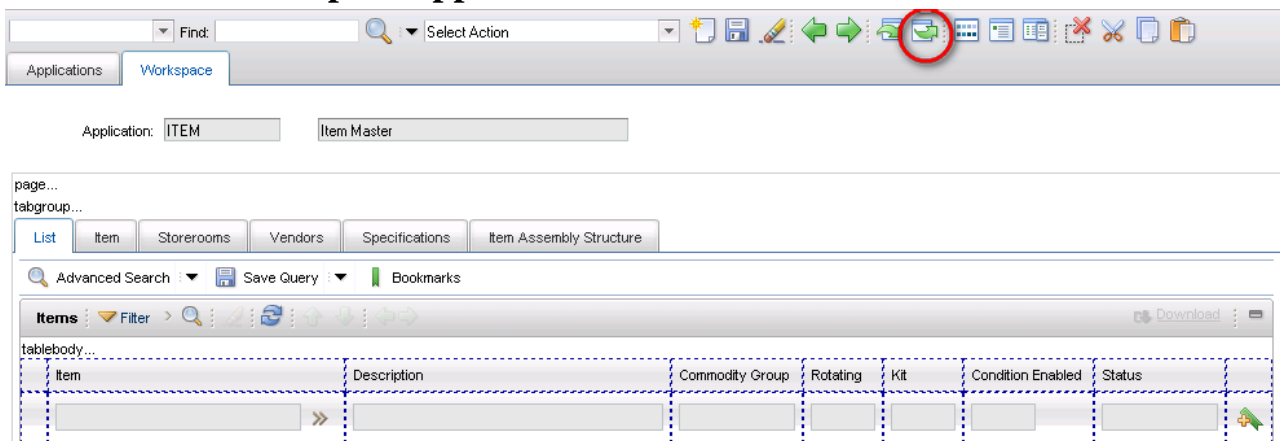


Figure 7 – Steps to Be Performed on IBM Maximo Platform

5. Save XML file to a local directory.
6. Use a text editor to edit the stored XML file. Insert the **<structviewer >** tag into the file and save changes.

Note: Make sure the specified tag is added to **<sectioncol>**. As soon as the changes are completed, import the modified XML file into the **Item** application. Refer to the screenshot below for details.

```
        <textbox dataattribute="remark" datasrc="ias" id="ias_tab_grid2_7" lookup="longdesc"/>
    </section>
</sectioncol>
- <section id="navigator_section">
- <sectioncol id="navigator_col">
    <structviewer height="600" id="ias_navigator" width="400"/>
</sectioncol>
</section>
</section>
```

Figure 8 – Editing XML File

7. Click **Import Application Definition** in **Application Designer**.
8. Specify the location of the modified XML code file.
9. Click OK.

Now, the IAS Navigator solution is ready to be used.

1.3 Uninstallation

To uninstall the solution, refer to the README file for the steps to be performed.

Chapter 2. Using IAS Navigator

2.1 Introducing IAS Navigator

IAS Navigator, or Item Assembly Structure Navigator, is an IBA solution based on the native IBM Maximo platform. *IAS Navigator* is designed for navigation and accelerated search of items (*Items*) and their corresponding descriptions based on the graphical representation of a whole complex structure (*Assembly Structure*) on an assembly drawing.

In addition to the introduced solution, an Editor is delivered. It allows for easy marking of item areas on an assembly drawing. Based on the marked areas, the editor enables the user to generate an XML file to be loaded into the application's attachments using IAS Navigator.

2.1.1 Features

- Shows decomposition of complex structures
- Highlights items in complex structures
- Provides basic information about item elements by clicking their images on the assembly drawing
- Using Editor, performs fast layout marking on an assembly drawing.

2.1.2 Benefits

- Accelerated item search leveraged by *Item Assembly Structure* visualization
- Reduced *Work Order* handling time by faster transfer of the required items into *Work Order*

2.2 Using Editor

2.2.1 Start Working with Editor

To start working with Editor, load a required image (JPG file) into a work area using the **Load Image** button. The JPG format is the only format supported by IAS Navigator on the IBM Maximo platform.

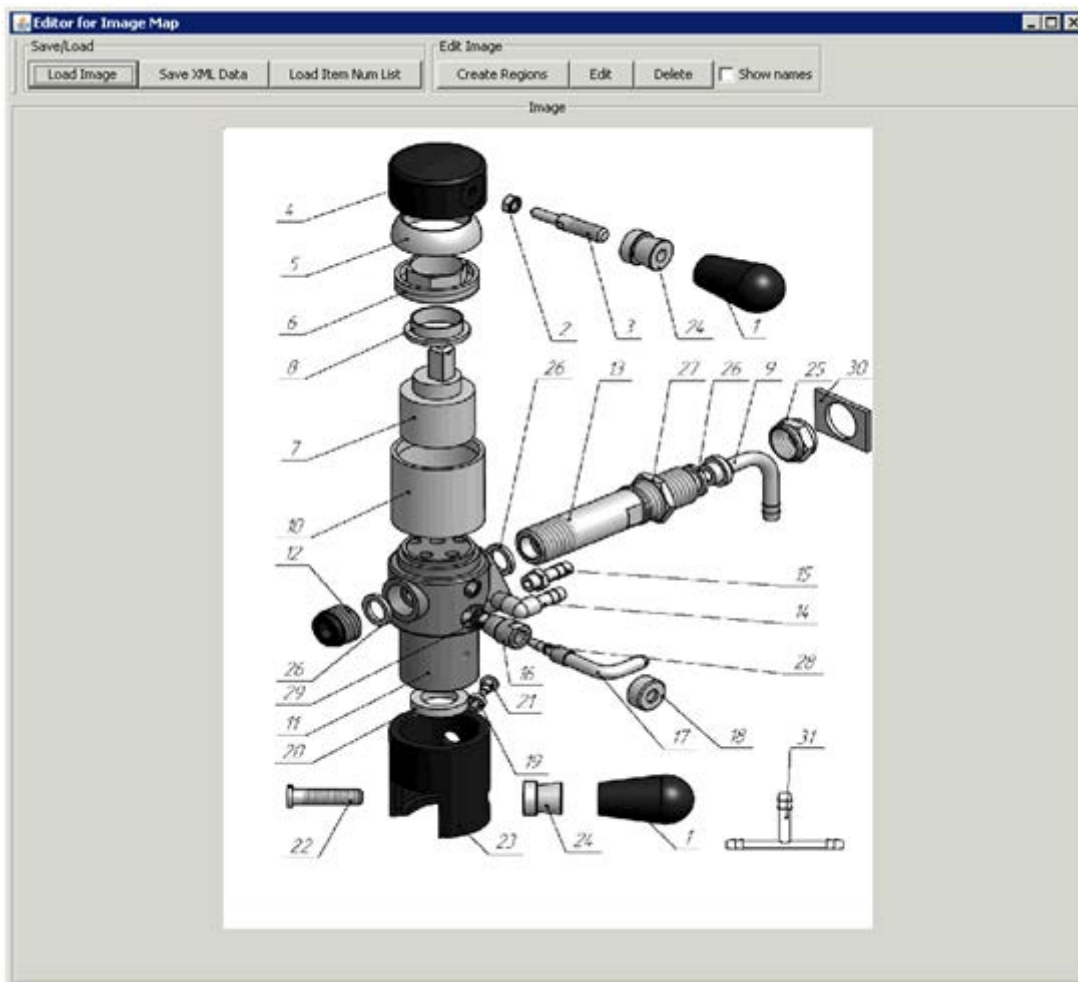


Figure 9 – Editor for Image Map with Device Image

Now you need to import a list of items into the Editor, so that they can be placed on the image. Prior to doing that, you need to download the item list from the corresponding IAS table in the Item Master application in the following way:

1. Open **GoTo** menu.
2. Find the **Item Master** application in the context menu.
3. Open **Item** and go to the **Item Assembly Structure** tab.
4. Click the **Download** button and save the file locally.

See the example on *Figure 10*.

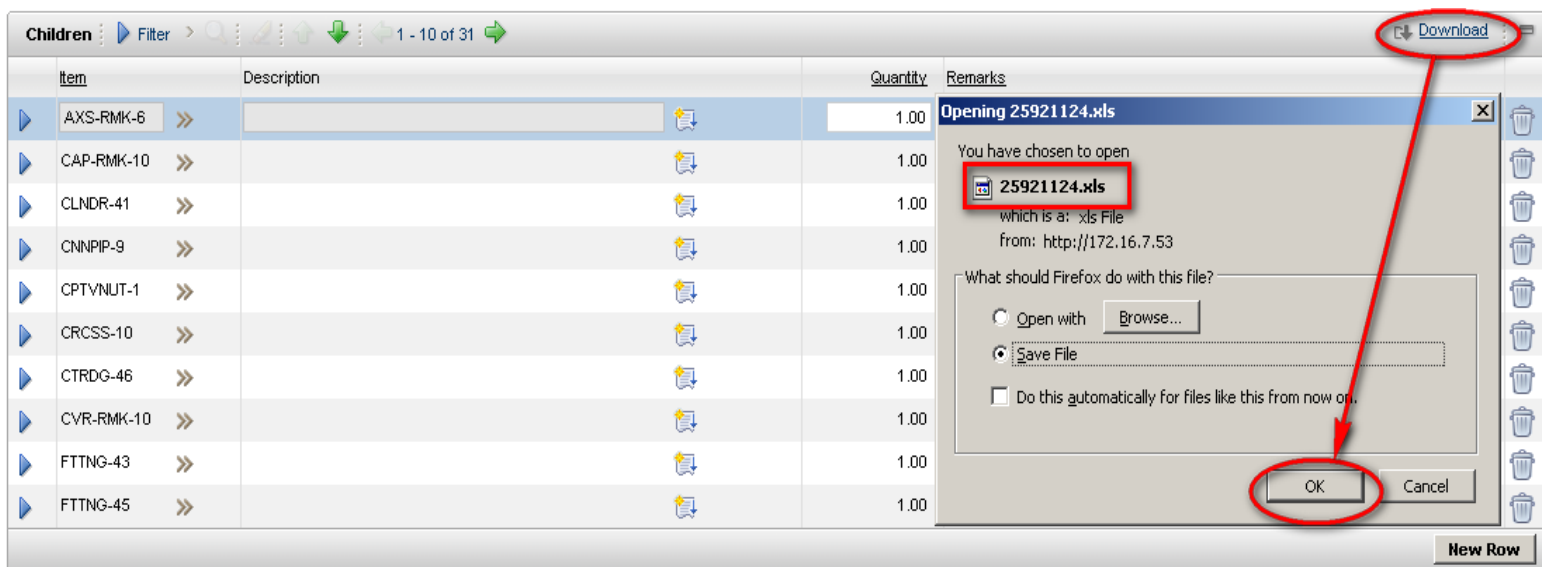


Figure 10 – Download XLS File

Press the **Load Item Num List** button in the Editor tool and upload the file you've just downloaded.

2.2.2 Using Editor

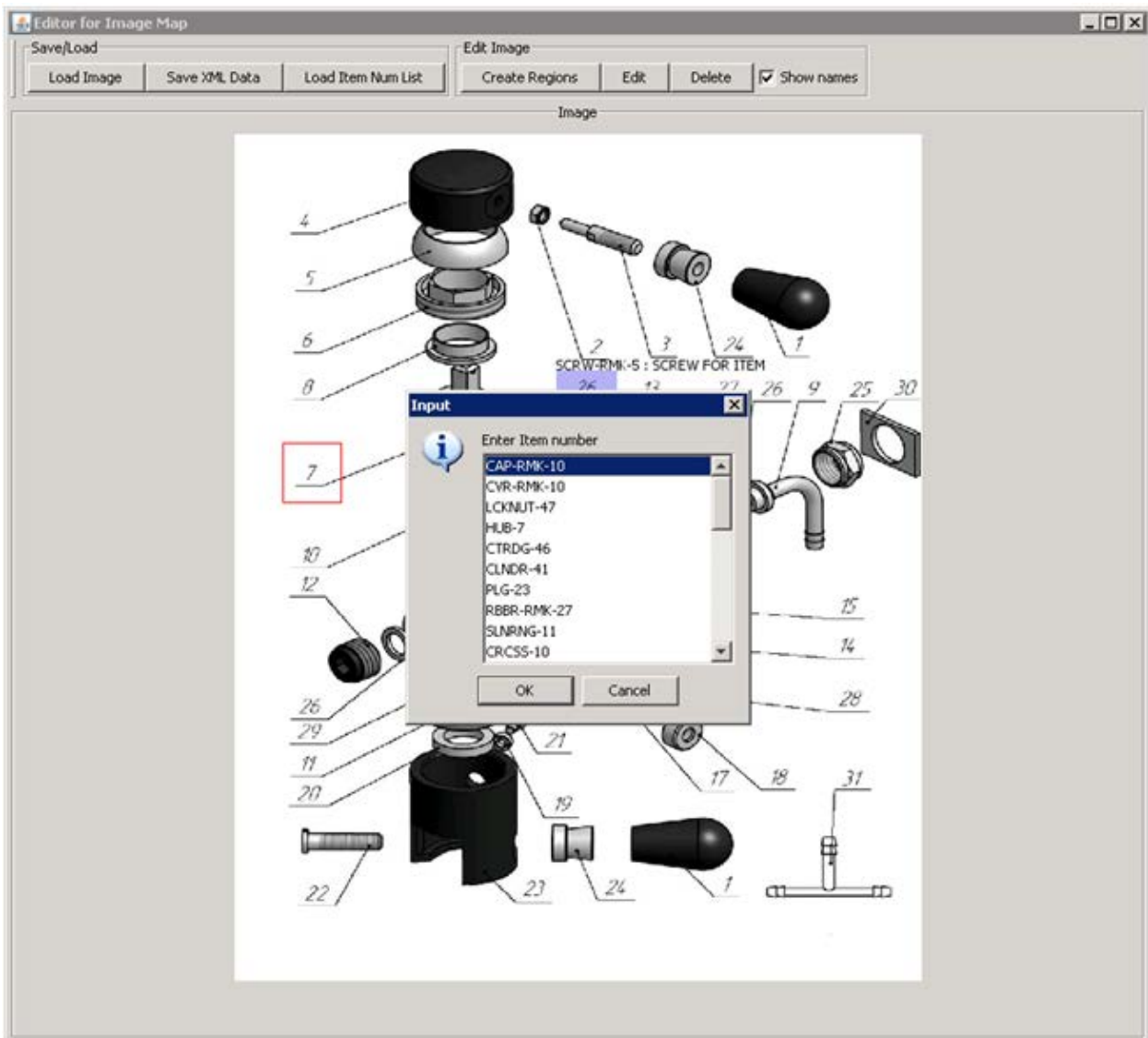


Figure 11 – Editor for Image Map with Input

Now put all necessary areas on the image. The number of areas equals to the number of specified identifiers. To move the area push the **Edit** button and drag the area to the desired location.

To edit the area's name, double click the one you've chosen in the displayed list. Also, **Delete** button allows for erasing an area. The option to display area names can be enabled or disabled at any time.

2.2.3 Saving Results

After all areas are located, push the **Save XML Data** button to generate an XML file for data storage on a disk.

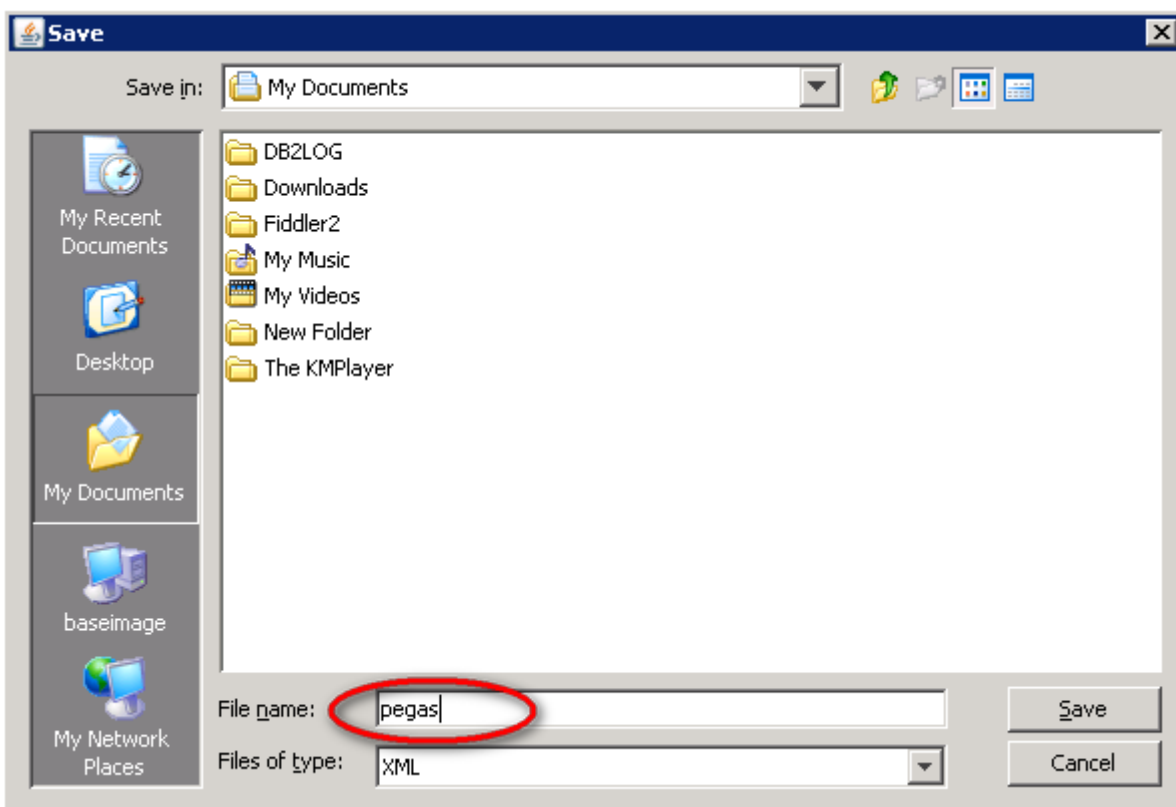


Figure 12 – Saving Results

The **STRUCT_** prefix is automatically appended to the name you typed. For example, if you name the file as “pegas”, the resulting file will be named as **struct_pegas.xml**.

Then, attach the generated file to the appropriate image in the attachments of an application, where IAS Navigator on IBM Maximo is used.

2.3 IAS Navigator Solution

2.3.1 Preparing Environment

To start working with the solution, load a device image and the XML file generated for this image to the attachments of an application where IAS Navigator is used.

The screenshot displays the IAS Navigator application interface. At the top, there is a navigation bar with tabs: List, Item (selected), Storerooms, Vendors, Specifications, and Item Assembly Structure. Below the navigation bar, the main content area is divided into two columns. The left column contains various fields for item configuration, including: Item: PEGAS-1 (with a dropdown arrow) and Device without foam filling beer; Item Set: NEW_1; Commodity Group, Commodity Code, Meter Group, and Meter (each with a search icon); Lot Type: * NOLOT (highlighted in yellow); Maximum Quantity Issued; Order Unit; Issue Unit; MSDS; and Receipt Tolerance % (each with a search icon). The right column contains the Attachments section, which is circled in red. It includes a Status: ACTIVE dropdown, and several checkboxes: Rotating?, Condition Enabled?, Kit?, Capitalized?, Inspect on Receipt?, Add as Spare Part?, Attach to Parent Asset on Issue?, and Tax Exempt?.

Figure 13 – Attachments of Application

As all files are added, the page looks as follows:

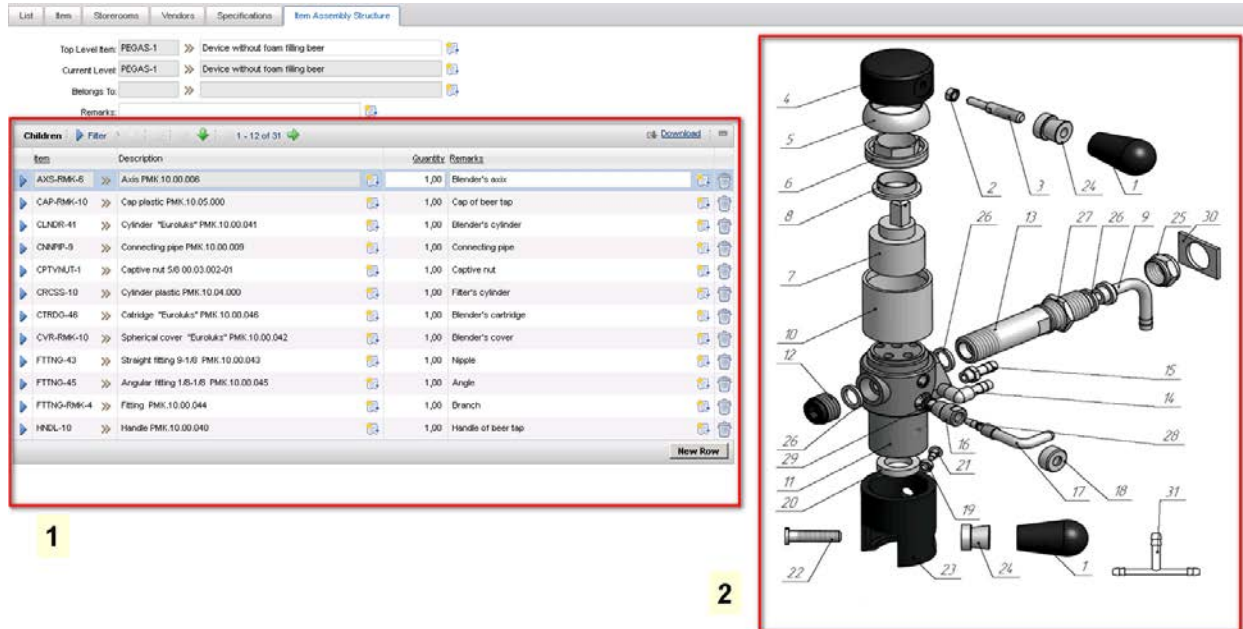


Figure 14 – Device with Its Structural Elements

Note.

1. The image being added to the attachments should be a JPG file. The name of the document should start with the **STRUCT_** prefix.

Create a File Attachment

Only files with the following formats can be enabled for printing: .pdf, .xls, .csv, .txt, .doc, .gif, .jpg, .ppt. Clear the check box beside the Print attached document with report if printable type option (Advanced Option) if the file being attached is not in one of these formats.

* Select a Folder: Images

Specify a file: C:\literature\Foto_for_attach\index.php_ Browse...

Name the document: STRUCT_PEG, Image for navigator

Advanced Options

Copy document to the default location set by your administrator (recommended)?

Add document to the document library for others to use?

Print attached document with report if printable type?

OK Cancel

Figure 15 – Saving JPG File

2. Similarly, the XML file being added to the attachments should start with the **STRUCT_** prefix.

Create a File Attachment

Only files with the following formats can be enabled for printing: .pdf, .xls, .csv, .txt, .doc, .gif, .jpg, .ppt. Clear the check box beside the Print attached document with report if printable type option (Advanced Option) if the file being attached is not in one of these formats.

* Select a Folder: Attachments

Specify a file: C:\literature\XML\test\struct.xml

Name the document: **STRUCT_XML** XML for navigator

Advanced Options

Copy document to the default location set by your administrator (recommended)?

Add document to the document library for others to use?

Print attached document with report if printable type?

Figure 16 – Saving XML File

2.3.2 Using IAS Navigator

Sample scenario:

- Once the cursor points to an area, the area gets highlighted. A left mouse button click on an Item in the assembly structure displays the details of the chosen *Item* and its description.
- Once the cursor moves from one area to another, the focus disappears from the initial area and moves to the chosen area making it highlighted.

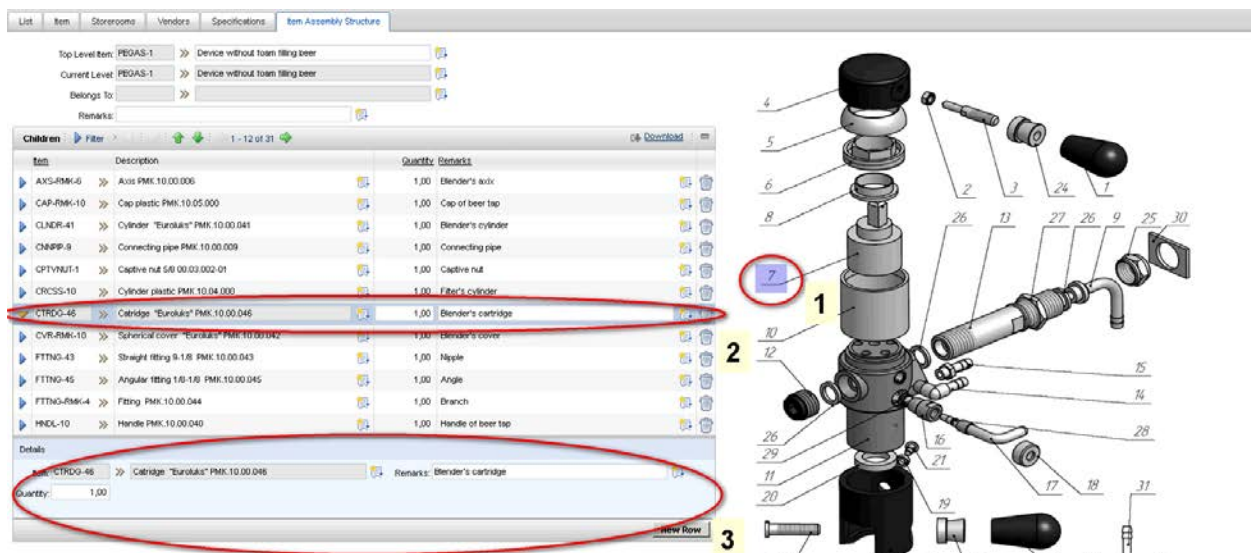


Figure 17 – Sample Scenario

Contacts

IBA, 155, Bogdanovicha St.,
Minsk 220040, Republic of Belarus.
Tel.: +375 17 217 3333,
Fax: +375 17 217 3232.

Email: support@ibagroupit.com
<http://www.ibagroupit.com>

