



Toll Free: 1-800-579-8088 Web: www.zinko.com

MODELS

## ZAPJ-22 & ZAPJ-25 Air Hydraulic Bottle Jacks

### Operating Instructions & Repair Parts List

#### Operation

The owner and/or operator shall have an understanding of these operating instructions and warnings before operating the jack. Warning information shall be emphasized and understood. If the operator is not fluent in English, the instructions and warning shall be read to and discussed with the operator in the operator's native language by the purchaser/owner, making sure that the operator comprehends its contents.

#### WARNING

##### For Your Safety and to Prevent Injury

1. **READ THIS OPERATION MANUAL THOROUGHLY** and fully understand its contents before using the jack. The manual explains important warning information.
2. This jack is designed for lifting purposes only, not for supporting loads.
3. Immediately after jacking, support vehicle (load) with appropriately rated stands or equivalent blocking.
4. **DO NOT ALLOW JACK ALONE, TO SUPPORT VEHICLE (LOAD).**
5. **DO NOT OVERLOAD THIS JACK BEYOND ITS RATED CAPACITY.**
6. This jack is designed for use only on hard level surfaces capable of sustaining the load. Use on other than hard level surfaces may result in jack instability and possible loss of load.
7. Failure to read these warnings may result in loss of load, damage to jack and/or failure resulting in personal injury or property damage.
8. **NEVER** get your arm, leg, and/or body under a heavy load supported only by a jack.
9. When the handle is not in use, remove it from the body of the jack. Never use a handle other than the one designated by the specifications.
10. Operating air pressure **MUST** be within the range of **100 to 200 psi**.
11. Be sure to **USE CLEAN, DRY AIR**. Dirty or humid air may cause malfunction of air pump. Clean dirt from air hoses and connect together.
12. Failure to read this caution may result in loss of load, damage to jack, and/or failure resulting in personal injury or property damage.

#### Inspection

1. Visual inspection shall be made before each use of the jack, checking for leaking hydraulic fluid, and damaged, loose or missing parts.
2. Each jack shall be inspected by an authorized **ZINKO** service facility immediately, if subjected to an abnormal load or shock.
3. Owners and/or users should be aware that repair of this equipment may require specialized knowledge and facilities. It is recommended that an annual inspection of the jack be made by an authorized **ZINKO** service facility and that any defective parts, decals or warning labels be replaced with genuine **ZINKO** parts. A list of authorized service facilities is available from **ZINKO**.

#### Damaged Jacks

Any jack which appears to be damaged in any way, is found to be badly worn, or operates abnormally SHALL BE REMOVED FROM SERVICE until necessary repairs are made by an authorized **ZINKO** service facility.

#### Operating Instructions (Before Use)

1. **Check oil level.** With the jack in an upright position and the ram completely retracted, open release valve by turning release assembly counterclockwise. Remove filler plug; the oil level should be just up to the hole. Fill if necessary with clean hydraulic jack oil. **NEVER USE BRAKE OR SHOCK ABSORBER FLUID.**
2. **Lubricate internal components.** With release valve open, pump handle six full strokes to assure proper internal lubrication.
3. **Bleed the hydraulic system.** During transit hydraulic jacks may become "air-bound", causing spongy ram action. To bleed the hydraulic system: **a)** Close the release valve by turning clockwise. **b)** Insert handle in socket and pump jack up to full height. **c)** Open the release valve, invert the jack and force the ram to retract.

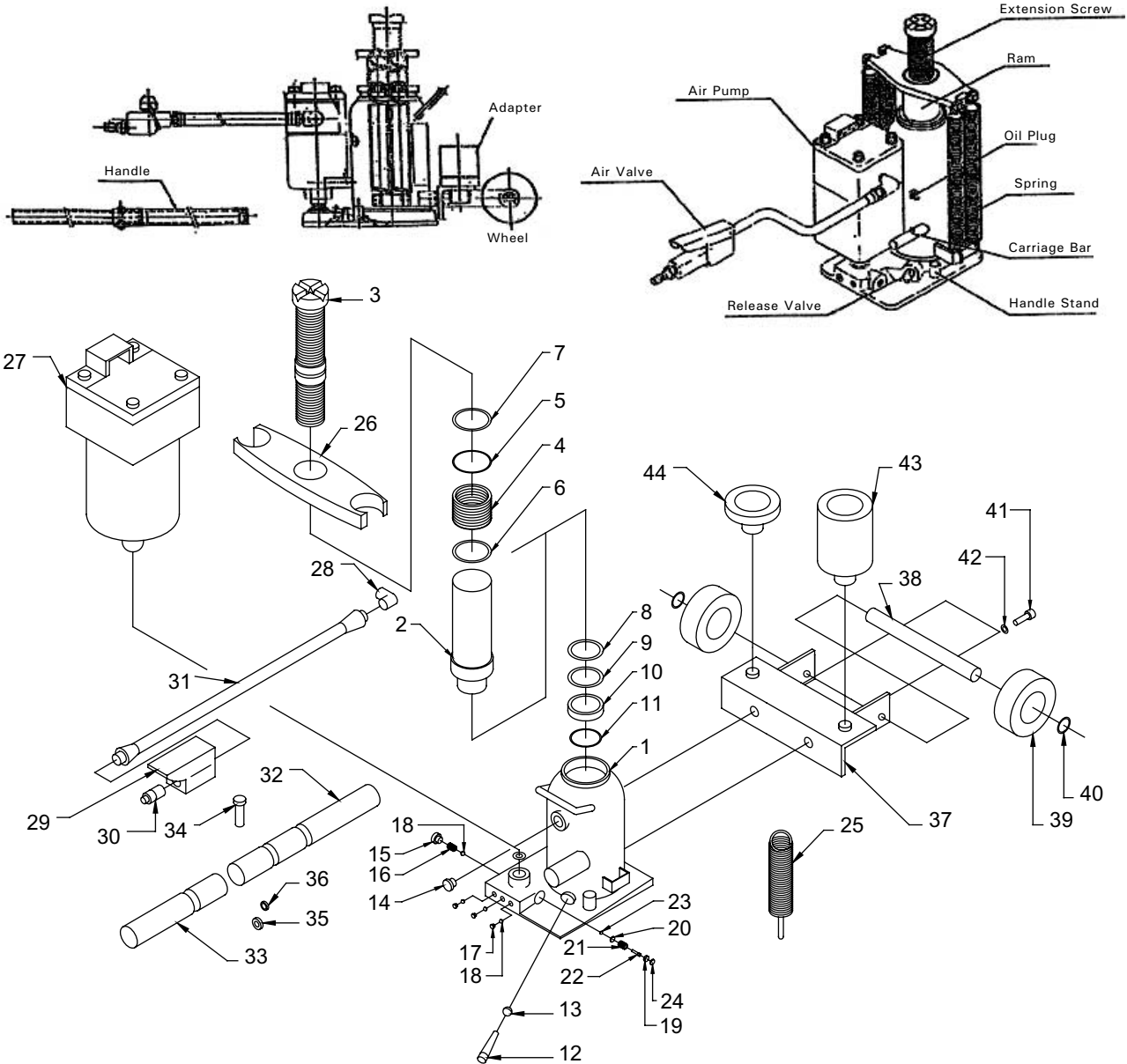
#### Using the Jack

1. Use the shortest possible air hose from compressor to the jack. Clean dirt from air hose and connect together. **BE SURE** to attach air filter and oiler to the outlet of compressor.
2. Close release valve, depress air valve and check lifting ram. Open release valve and check lowering of the ram.
3. Once the saddle contacts the load, **STOP** and re-check the point of contact to ensure load is centered. Raise the load carefully to desired height and never raise further.
4. After jacking, **BE SURE TO TRANSFER LOAD TO JACK STAND.**
5. Lower load by turning release valve counterclockwise slightly and very slowly. **DO NOT TURN RELEASE VALVE MORE THAN TWICE**, which can cause dangerous sudden lowering.

**NOTE:** Take care not to contaminate coupler with dirt or sand which may cause malfunction of jack and air pump. **BE SURE** air hose is kept connected while centering jack under point of contact.

# Zinko Hydraulic Jack

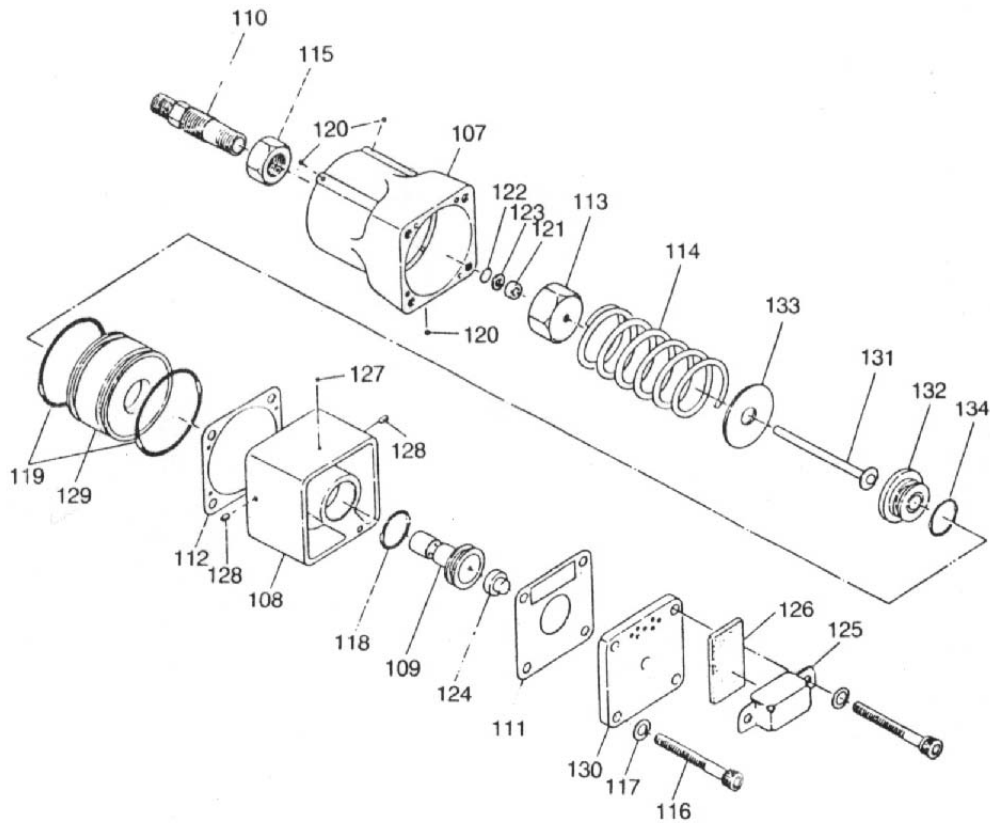
## Model: ZAPJ-22 & ZAPJ-25 Parts Breakdown



PART NO.	DESCRIPTION	PART NO.	DESCRIPTION	PART NO.	DESCRIPTION
9060220P - 1	BODY ASSY	9060220P - 16	VALVE SPRING	9060220P - 31	AIR HOSE
9060220P - 2	RAM	9060220P - 17	SCREW	9060220P - 32	HANDLE A
9060220P - 3	ADJUSTING SCREW	9060220P - 18	VALVE BALL	9060220P - 33	HANDLE B
9060220P - 4	STUFFING NUT	9060220P - 19	S. V. PACKING	9060220P - 34	SCREW
9060220P - 5	O-RING	9060220P - 20	BALL SHEET	9060220P - 35	NUT
9060220P - 6	O-RING	9060220P - 21	S. V. SPRING	9060220P - 36	SPRING WASHER
9060220P - 7	DUST SEAL	9060220P - 22	ADJUSTING SCREW	9060220P - 37	ATTACHMENT
9060220P - 8	BACK-UP RING	9060220P - 23	S. V. BALL	9060220P - 38	SHAFT
9060220P - 9	RAM PACKING	9060220P - 24	PUSH NUT	9060220P - 39	WHEEL
9060220P - 10	RAM GUIDE RING	9060220P - 25	SPRING	9060220P - 40	E-RING
9060220P - 11	RAM SNAP RING	9060220P - 26	SPRING HANGER	9060220P - 41	BOLT
9060220P - 12	RELEASE STEM	9060220P - 27	AIR PUMP ASSY	9060220P - 42	SPRING WASHER
9060220P - 13	RELEASE O-RING	9060220P - 28	ELBOW	9060220P - 43	*ADAPTER A (OPTIONAL)
9060220P - 14	OIL PLUG	9060220P - 29	AIR VALVE ASSY	9060220P - 44	*ADAPTER B (OPTIONAL)
9060220P - 15	PLUG	9060220P - 30	COUPLER	9060220P - 45	SPACER

# Zinko Hydraulic Jack

## Model: ZAPJ-22 & ZAPJ-25 Pump Breakdown



AIR PUMP			
Part No.	DESCRIPTION	Part No.	DESCRIPTION
9060220S-P 107	Cylinder	9060220S-P 121	Seal Ring
9060220S-P 108	Valve Body	9060220S-P 122	*O-Ring
9060220S-P 109	Valve	9060220S-P 123	*Backup Ring
9060220S-P 110	Cylinder Bolt	9060220S-P 124	Pilot Piston Cushion
9060220S-P 111	*Gasket A	9060220S-P 125	Silent Cap
9060220S-P 112	*Gasket B	9060220S-P 126	Soundproofer (B)
9060220S-P 113	Seal Nut	9060220S-P 127	Ball
9060220S-P 114	Spring	9060220S-P 128	Screw
9060220S-P 115	Nut	9060220S-P 129	Piston
9060220S-P 116	Cap Screw	9060220S-P 130	Head Cap
9060220S-P 117	Spring Washer	9060220S-P 131	Piston Rod
9060220S-P 118	*O-Ring	9060220S-P 132	Piston Plug
9060220S-P 119	*O-Ring	9060220S-P 133	Piston Plate
9060220S-P 120	Ball	9060220S-P 134	O-Ring
		9060220S-RP	Repair Kits (All * Above)

# Zinko Hydraulic Jack

## Model: ZAPJ-22 & ZAPJ-25

REV 062607

### CAUTION

1. **DO NOT OVERFILL OIL BEYOND THE OIL FILL LEVEL, AS THE JACK'S OIL AMOUNT LIMITS THE MAXIMUM EXTENSION OF THE RAM.** Too much oil may make the ram fall off, which may result in a serious accident.
2. **SLOWLY TURN RELEASE STEM.** Turning it quickly makes a heavy load fall rapidly, which may result in jack's losing engagement at jacking point, and/or damage to jack leading to a serious accident.
3. If stains on labels make it difficult to make out the instructions on them, or jack appears to be in an abnormal condition, consult your dealer immediately.
4. Ensure no foreign matter such as dirt enters the system while filling oil. **NEVER USE BRAKE OIL OR VEGETABLE OIL, AS SUCH OIL CAUSES JACK TO MALFUNCTION.**

### Maintenance

1. **Lubrication.** LACK OF OIL CAN CAUSE MALFUNCTION. Occasionally lubricate the handle socket pivot point, extension screw, and release screw thread to prevent corrosion.
2. **To Add or Replace Hydraulic Jack Oil.**
  - a) Retract ram completely.
  - b) Remove filler plug with your fingers and fill reservoir with designated jack oil or general hydraulic fluid to the bottom edge of fill hole with jack upright.
  - c) Replace filler plug, operate pump to the ram's full height, and continue pumping for five or six times at the position. Push down ram completely and push open filler plug sideways to let out air.

**Proper Oil:** ISO VG 10. Never use high viscosity oil or volatile oil such as brake oil or vegetable oil which may cause malfunction. We recommend annual oil replacement and inspection. Please contact a **ZINKO** service center for service inspection.
3. **Storing Jack.** After using, clean jack, check sliding and rotating parts and oil as needed. When storing, keep ram and extension screw at lowest position and store the unit(s) indoors.

### Troubleshooting

PROBLEM	CAUSE	SOLUTION
Air Pump Will Not Operate.	<ol style="list-style-type: none"> <li>1. Low air pressure.</li> <li>2. Air outlet is frozen.</li> <li>3. Packing defective, switching valve defective or dirty.</li> <li>4. Lack of oil.</li> </ol>	<ol style="list-style-type: none"> <li>1. Keep air pressure between 100-200 psi.</li> <li>2. Stop using and thaw outlet.</li> <li>3. Contact service center.</li> <li>4. Supply oil from coupler or contact service center.</li> </ol>
Air Pump Acts But Ram Will Not Rise.	<ol style="list-style-type: none"> <li>1. Release valve is open.</li> <li>2. Lack of hydraulic oil.</li> <li>3. "Air-bound" in valve system.</li> <li>4. Inlet/outlet valve dirty or defective, packing defective.</li> </ol>	<ol style="list-style-type: none"> <li>1. Close valve clockwise.</li> <li>2. Supply oil.</li> <li>3. Remove spring, close valve and raise ram.</li> <li>4. Contact service center.</li> </ol>
Ram Will Not Rise to the Highest Position.	<ol style="list-style-type: none"> <li>1. Lack of oil.</li> <li>2. Release valve not securely closed.</li> </ol>	<ol style="list-style-type: none"> <li>1. Supply oil.</li> <li>2. Close valve clockwise.</li> </ol>
Ram Will Not Lower.	<ol style="list-style-type: none"> <li>1. Outlet valve dirty or defective, or packing defective.</li> </ol>	<ol style="list-style-type: none"> <li>1. Contact service center.</li> </ol>
Ram Rises Slowly.	<ol style="list-style-type: none"> <li>1. Filter is loaded, air pump packing defective, or valve not properly opened or closed.</li> </ol>	<ol style="list-style-type: none"> <li>1. Contact service center.</li> </ol>
Oil Blowing From Air Pump.	<ol style="list-style-type: none"> <li>1. Packing defective.</li> </ol>	<ol style="list-style-type: none"> <li>1. Contact service center.</li> </ol>
Ram Will Not Lower.	<ol style="list-style-type: none"> <li>1. Release valve defective.</li> </ol>	<ol style="list-style-type: none"> <li>1. Contact service center.</li> </ol>
Ram Will Not Lower Completely.	<ol style="list-style-type: none"> <li>1. Deformation by overload or eccentric load.</li> </ol>	<ol style="list-style-type: none"> <li>1. Contact service center.</li> </ol>

If the above procedures do not correct the problem, contact your nearest **ZINKO** service facility. When submitting any jack or equipment to be repaired, be sure to state the nature of the problem and indicate whether an estimate of the repair cost is needed.