

Package Contents:



- One CitiDISK HDV unit
- One 1.5 meter in length 6-pin to 4-pin iLink cable for camcorder
- One CD containing programs, drivers, manual and user guide
- One universal 100 to 240 volt AC input, +12 volt DC output Wall-mount power adapter with reverse polarity plug
- One belt-clip configured carrying pouch
- One Quick Usage Guide (this document)

Product Registration and Technical Support:
<http://www.shining.com>

Disclaimer

All of the companies and product names mentioned in this manual are the registered trademarks of their owners. All of the information in this booklet is subject to change without notice.

CitiDISK HDV Quick Usage Guide

Edit Instantly. No Capturing Required!



FW1256H

It is highly recommended that you read the complete CitiDISK Installation/Usage Manual and Utility Suite Manual before using this product to help ensure that you get the most out of your CitiDISK HDV.



Do not drop, jar, bump, shock the unit, or expose to sources of excessive vibration. Keep in mind that CitiDISK HDV uses a 2.5" hard drive, which is similar to those used in laptops. Gently handle and carry your CitiDISK HDV, especially during video recording. If the battery is not fully charged, user must charge it for at least 4 hours before any self-powered usage.

Buttons, Connectors, Switch & Status Lights

Note: The following illustration describes each of the buttons of both the CitiDISK DV (FW1256C) and the CitiDISK HDV (FW1256H). These three buttons serve as status indicator lights as well.

POWER Button and Status Light:

Solid **GREEN**: unit is on
Blinking **GREEN**: 5 minutes left in the internal battery

External Power In Connector:

Accepts +6V to +18V DC power input. Automatically switches off and charges internal battery when plugged in

RECORD Button & Status Light:

Solid **RED**: Recording
Blinking **RED**: 5 minutes left in recording capacity or not connected

Internal Battery Charging Light:

Bright **BLUE**: Charging
Dim **BLUE**: Charging almost complete
Off: Charge complete or disk accessing

Quick Erase Button:

Quickly erases all files in the "Media" folder



FireWire Connector:
Connects to camera or computer

QPlay Button and Status Light:

Solid **ORANGE**: Playing last captured clip

PlayAll Button and Status Light:

Blinking **ORANGE**: Playing all captured clips from last scene forward or backward

Battery and Main switch:

On: Switch is toward the bottom white "Dot"
Off: Switch is away from the bottom white "Dot"

Technical Specifications

Interface	One IEEE1394A port SBP-2, Isochronous video streams
Cable	One 6pin-4pin IEEE1394A standard included
Sustained Device Transfer Rate	up to 12 MBytes/second
Internal Battery	Rechargeable, Lithium based battery good for up to 90 minutes of non-stop recording
External Power	+6V to +18V DC in
Operating Temperature	0 to 55 Centigrade
Relative Humidity	95% Maximum
Storage Temperature	-22 to 65 Centigrade
Dimension	Width -- 77mm Length -- 135mm Height -- 24mm
Weight	Less than one pound
HDV Recording Capacity	FW1256H-40 180 minutes FW1256H-60 270 minutes FW1256H-80 360 minutes FW1256H-100 420 minutes

Limited Warranty

The manufacturer guarantees that every CitiDISK HDV including the kit but not the batteries embedded inside the enclosure (hard disk drive warranty policy is exclusive and is warranted by its manufacturers) will be free from physical defects in material and workmanship under normal use for one (1) year from the date of purchase. If the product proves defective during this warranty period, contact your manufacturer's customer support in order to obtain a Return Authorization Number. BE SURE TO HAVE YOUR PROOF OF PURCHASE ON HAND WHEN CALLING. RETURN REQUESTS CANNOT BE PROCESSED WITHOUT PROOF OF PURCHASE.

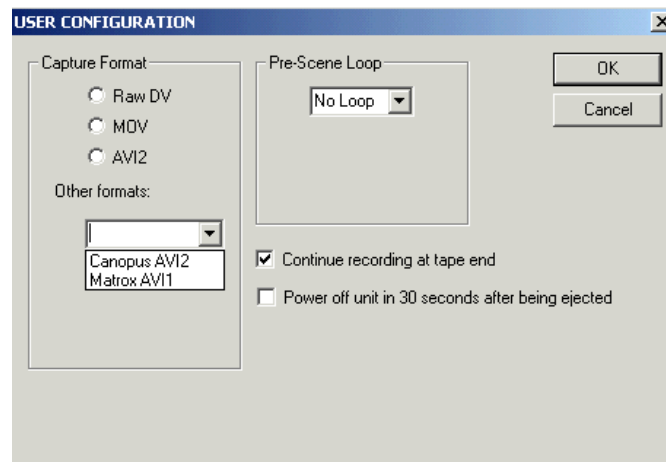
The **“Capture format”** column displays the current captured format. For example, “QuickTime” MOV is the format selected. User is able to change it by clicking on one of them.

There are two user-definable formats available, which are “Canopus AVI2” and “Matrox AVI1”, if the firmware was installed later than November 1, 2004.

The **“Pre-Scene Loop”** function will display how many seconds user wants to choose. If it’s blanked out, such function is not supported by this hardware. Up to 6 seconds is allowed for FW1256C & H model.

The **“Continue record at tape end”** is “checked” as a default setting. Un-checking this item will force the CitiDISK HDV unit to stop recording at tape end.

The **“Power off”** is not checked as default setting. Checking this item will automatically turn off the unit 30 seconds after being ejected from the computer or after being left un-connected to the camera or computer.



Manufacturer Suggested Operating Procedures

The following are two of the most commonly used workflows for the CitiDISK HDV suggested by the manufacturer.

Shooting Video to the CitiDISK HDV Simultaneously with Tape

1. Fully charge the unit’s internal battery
2. Choose the favorable native file format for your editing system
3. Securely connect the CitiDISK HDV to the camcorder or mount the external battery/unit together with camcorder
4. Insert the tape and control the HDV recording from the camcorder’s “REC” button or manually record the video if no tape is inserted
5. Play the last captured scene or play all scenes after you have completed shooting
6. Connect to computer and copy all of the clips to the internal hard disk for editing
7. Re-connect the CitiDISK HDV to the camcorder and quick erase all of the captured clips to re-claim the free disk space for next usage

Shooting Video to Tape First Then Archiving to the CitiDISK HDV Later

1. Insert the tape and record the video
2. Plug in the wall-mount power adapter to the CitiDISK HDV
3. Choose the favorable native file format per your editing system
4. Connect the camcorder & the CitiDISK HDV and archive videos to the CitiDISK HDV
5. Connect to computer and copy clips to the internal hard disks for editing
6. Re-connect the CitiDISK HDV unit to the camcorder and quick erase all of the captured clips to re-claim the free disk space for the next usage

Securing the FireWire Cable with Camcorder

- Plug in the 4-pin FireWire connector into the camcorder iLink port vertically.
- Run the FireWire cable through the handstrap and secure it.
- Make sure the FireWire cable is slightly tightened by the strap.



- Insert the CitiDISK HDV upright inside the pouch.



- Zip the pouch halfway, leaving the top portion of pouch open for the FireWire cable.
- Run buckle across belt and buckle it up.



Mounting Between Shoulder-mount Camera and G-/V-Mount Battery with Optional Pocket Adapter

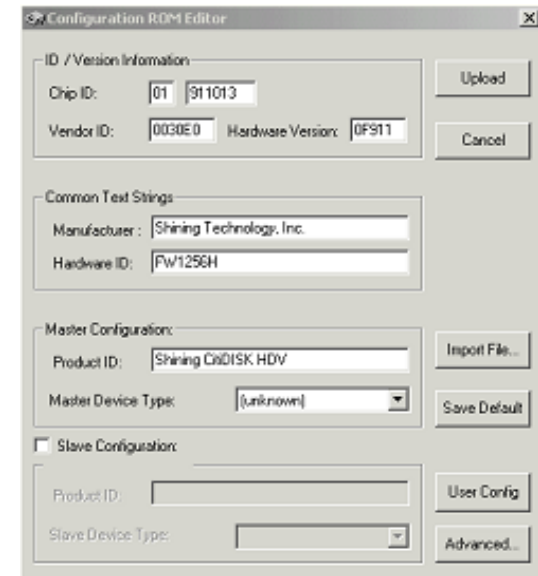
- Slide the CitiDISK HDV into the PCKT1256 pocket adapter (item not included and sold separately).
- Sandwich the pocket adapter with the unit in between the camera's back and the battery.
- Connect the D-Tap power cord between unit's external power input and one of the D-Tap receptacles.



Modifying Device Configuration Setting

8). Click on the **"Modify device configuration setting"** button. Make sure the Hardware ID shown is "Fw1256H" and Product ID is "Shining CitiDISK HDV".

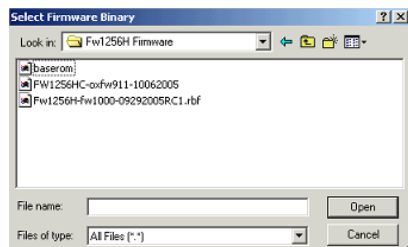
The configuration setting comes preset and there is usually no need to change it except the "User Config" sub-menu.



Click on **"User Config"** will display the next screen.



7). Click on the **“Upload / Upgrade Device Firmware”** button. Follow the instructions and the system will ask for the firmware target. Select the one you just download (must be in a binary form).



Select the file named like “FW1256HC-oxfw911-10062005” as the example shown above with the “Binary” or “bin” file extension. Click on “Open” and then “OK” to continue. This process will take approximately 10 seconds to write the new firmware into the unit. Once the upload process is completed, the CitiDISK HDV will re-synchronize itself to the system and both **RED** & **GREEN** lights will blink alternately.

Turning On Internal Battery Before Usage

Turning on the battery:

Use a sharp pencil tip to slide the switch left to the “white dot” position. Without doing so the CitiDISK HDV will not operate.



Turning off the battery:

Use a sharp pencil tip to slide the switch to the right position while in storage or in transit so as not to drain the battery when it’s not in use.



Charging the Internal Rechargeable Battery

Charging power is drawn from the FireWire bus power or external power adapter. A minimum of 4 to 6 hours of charging time is required before use.



The **BLUE** LED indicates battery charging is in progress. Once the battery is fully charged, the **BLUE** LED will turn off.



Powering On/Off the CitiDISK HDV



Power on:

Toggle the “PWR” button (closest to the external power adapter input) once. When the internal battery has less than 5 minutes of power remaining, this power status light will start to blink and will stop recording before shutting off the unit completely.

Power off:

Toggle the **GREEN** “PWR” button again.

Camcorder Controlled HDV Recording



- Connect the FireWire cable (4-pin end) to the camcorder's iLink port.
- Connect the FireWire cable (6-pin end) to the CitiDISK HDV. Set the camcorder to "Camera" mode.
- Press the "REC" button on the camcorder to start recording. The "REC" button will start to flash to solid RED indicating video recording is in progress.
- Press the "REC" button of the camcorder again to stop recording. The RED light will shut off.

Recording Video Manually



- Connect the FireWire cable (4-pin end) to the camcorder's iLink port.
- Connect the FireWire cable (6-pin end) to the CitiDISK HDV. Set camcorder to "Camera" mode.
- Press "REC" button on the CitiDISK HDV unit to start recording. The RED button will start blinking to solid RED.
- Press the "REC" button on the CitiDISK HDV unit again to stop recording. The RED light will shut off.

Archiving HDV Tape Content



- Connect the FireWire cable (4-pin end) to the camcorder's iLink port.
- Connect the FireWire cable (6-pin end) to the CitiDISK HDV.
- Set the camcorder to "VCR" mode. Position the tape to the beginning of the content.
- Press the "REC" button on the CitiDISK HDV. "REC" light blinks and waits to be fed.
- Press the "PLAY" button on the camcorder to start archiving. RED light will change to solid RED indicating recording is in progress.
- Stop DV recording by pressing the "REC" button of the CitiDISK HDV and then stop tape playing. RED LED will go off automatically.

P6 Shining Technology CitiDISK HDV Quick Usage Guide v8.0

- *** Avid DV Xpress use proprietary OMF video file format, user need to import video files prior to editing. Either AVI2 or MOV is importable.
- *** Maxtrox AVI1 shares the same light indications as Canopus AVI2, user must use firmware uploader v1.5 or newer to exclusively select Matrox AVI1 or Canopus AVI2; however, rest of Maxtrox editing softwares use standard AVI2.

Updating the CitiDISK HDV Firmware

Proceed by following these steps with caution and do not unplug the CitiDISK DV's power while in operation; otherwise the firmware could be damaged.

- 1). Uninstall the previous version of Uploader and install the latest "Firmware Uploader". The firmware uploader can be found in the CD included or downloaded from <http://www.shining.com>, "Download & Support" page.
- 2). Connect the CitiDISK HDV to your computer (Windows System only) with the FireWire cable.
- 3). Turn on the CitiDISK HDV. Wait for about 20 seconds.
- 4). Click on the "Plug-n-Play" icon at the bottom right corner of the tool bar. Select the disk drive that you wish to eject.

The message illustrated below will appear; click on "OK" to continue.



- 5). Do NOT disconnect the Firewire cable from the system. Leave the CitiDISK HDV power on. Wait for another 20 seconds until the CitiDISK HDV re-synchronizes itself to the system.
- 6). Double-click the "CitiDISK HDV firmware uploader" icon on the desktop to launch the program. You'll see the following window. On the top is the uploader version number, i.e. "v1.6". Current installed firmware date code will be shown at the very bottom. Make sure the HW Rev. is "Fw1256H R1".




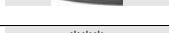













P11 Shining Technology CitiDISK HDV Quick Usage Guide v8.0

HDV Streams vs. Editing Software

When HDV recording is selected, the M2T file format is the only allowable and pre-set file format supported by the manufacturer at the time of release of this "Quick Usage Guide".

DV Streams vs. Editing Software

The following is a table of various editing software's native video file formats and suggested key combination for FW1256B, C and H models for incoming DV signal.

Editing Software	Native File Format	Suggested Key Combination
Adobe Premiere 6.0 and Pro 1.5	Standard AVI2	
Apple Final Cut Pro, Express in Mac OS X	QuickTime MOV	
Apple iMovie3 on Mac OS X	RawDV	
Apple Quick Time in Win2000, XP and Mac OS X	QuickTime MOV or RawDV	
Avid Xpress DV 3.0 in Win2000, XP and Mac OS X	Proprietary OMF's	***
Canopus DV Storm	Canopus AVI2	
Edirol Standalone Editing Station	RawDV	
MacroSystem / Casablanca Standalone Editing Station	RawDV	
MainConcept EVE 1.0	RawDV	
Matrox LE, DTV and LX	Standard AVI2	
Matrox RT100 Xtreme Pro	Standard AVI2 or Matrox AVI1 ***	
MGI(Roxio) VideoWave	Standard AVI2	
Media100 Cinestream in MacOS	Standard AVI2	
Pinnacle Studio	Standard AVI2	
Sonic Foundry Vegas 3.x	Standard AVI2	
Sonic MyDVD	Standard AVI2	
Sony Vega 5.x and 6.0	Standard AVI2	
Ulead Media Studio and Video Studio	Standard AVI2	

HDV Editing and External FireWire Hard Disk

- Disconnect the FireWire cable from the camcorder and re-connect it to a FireWire port (4-pin or 6-pin type) equipped computer, PC or Mac.
- Use the CitiDISK HDV as an external FireWire hard disk for file archiving, backing-up and/or other video editing functions.
- CitiDISK HDV is PLUG-and-PLAY specification compliant; no driver is needed.
- It is recommended by the manufacturer to backup all the captured clips to an internal or second hard disk before editing. Although dragging unwanted video clips into "Recycle Bin" and emptying the Recycle Bin will re-claim your hard disk space, the directory holding the clip names will not. Eventually the number of clips that can be recorded will be reduced. It is recommended to use the "Quick Erase" function to re-claim the hard disk space of the CitiDISK HDV.

Quick Erase Button and Utility Programs

- Connect the FireWire cable (4-pin end) to the camcorder's iLink port.
- Connect the FireWire cable (6-pin end) to the CitiDISK HDV. Set the camcorder to "Camera" or "VCR" mode.
- Use a pencil tip or hard sharp object to press and hold the button for more than 5 seconds. The power-access light will flash in different colors for maximum of 5 seconds.



Note: All of the files inside the "Media" folder are subject to be erased. It is suggested by the manufacturer that you back up the clips to an internal hard disk first and erase the clips with the "Quick Erase" function instead of dragging them into the Recycle Bin and emptying it later.

Quick Play Last Captured Clip

- Connect the FireWire cable (4-pin end) to the camcorder's iLink port.
- Connect the FireWire cable (6-pin end) to the CitiDISK HDV.
- Set the camera to "VCR" mode.
- Toggle the middle "QPlay" button to play the last captured clip and subsequently the light will turn solid **ORANGE** when playing. Once the last captured clip ends, the light will automatically turn off.

Play All Captured Clips



Jump Forward



Jump Backward

- Connect the FireWire cable (4-pin end) to the camcorder's iLink port.
- Connect the FireWire cable (6-pin end) to the CitiDISK HDV.
- Set the camera to "VCR" mode.
- Press and hold the middle **QPLAY** button for over 3 seconds and the **ORANGE** light will start to blink.

The last captured clip will play from beginning to end first, then it will play from beginning to end of the first recorded clip of the "Media" folder. Additional clips will play in the sequence they were captured.

You can reverse the order of the playback sequence by toggling the "REC" button. The "REC" light blinks if reverse direction is selected. Press the "REC" button again to reset to normal order.

- Toggle the middle **ORANGE** button once to abort playing the current clip and to jump forward to the next clip (Only if "RED" light is off). It jumps backward if "RED" light is blinking.
- Press and hold the middle **ORANGE** button for over 3 seconds to stop the "PlayAll" function.

Choosing Favorable DV Video File Format

Note: This paragraph is for choosing the video file format for the FW1256B (no middle "orange" light), FW1256C and FW1256H when DV recording is selected, which is not suitable for earlier released DV FW1256A models.

Operate the following steps only when the external power adapter is plugged into the unit and it is not connected to a computer or camcorder. DO NOT turn off the unit before the sequence is completed.

1. Look at the front panel of the CitiDISK HDV.
2. Turn on the power of the CitiDISK HDV. Wait until both lights start to blink.



3. Press and hold the "RED" button for over 5 seconds. Currently stored file formats will display the light combinations illustrated below. "Raw DV" is set as the default from the factory.

Raw DV (Clipxyy.dv)		Windows AVI2 (Clipxyy.avi)	
QuickTime MOV (Clipxyy.mov)		User Defined **	

** Refer to the user manual's "How to customize User Defined file format" section; the manufacturer default is set to "Canopus AVI2".

4. Choose next file format by toggling the "RED" button.
5. Once the file format is determined, stop toggling and wait for 10 seconds. Both buttons will go off and stay off for 3 seconds.
6. The CitiDISK HDV will start writing the new file format information into internal memory. Both lights will blink rapidly for approximate 10 seconds during the writing process.
7. Once the file format is completed, both lights will blink normally to indicate the writing process is successful. The CitiDISK HDV is now ready to capture video using the programmed file format. User MUST turn off the power before programming a new format again.