



INSTALLATION INSTRUCTIONS

Security Keychain Remote

Model: MK-MT



Parts	Description	Quantity
A	Keychain Remote	1

Congratulations on your purchase of the Skylink Security Keychain Remote, Model: MK-MT. The wireless security keychain remote can arm or disarm your SkylinkNet and M-Series Alarm system with a press of a button.

Safety Information

This device complies with Part 15 of the FCC Rules. Operation is subject to the following two conditions: (1) This device may not cause harmful interference, and (2) This device must accept any interference received, including interferences that may cause undesired operation.

WARNING:

Changes or modifications to this unit not expressly approved by the party responsible for compliance could void the user's authority to operate the equipment.

CE - DECLARATION OF CONFORMITY:

This equipment complies with the requirements relating to electromagnetic compatibility, EN 301489-1, EN301489-3, EN300220-1, EN300220-2 and EN60950-1. This equipment conforms to the essential requirement of the 1999/5/EC R&TTE Directive.

Package Contents

Section 1 - Programming the Remote with M-Series Main Console

NOTE: You can program in total up to 4 security keychain remotes or keypads to your M-Series Alarm System.

NOTE: The security keychain remote must be programmed in Zone 1.

1. Press the learn button on the back of the M-Series Main Console for 3 seconds until the Zone 1 light is flashing.



2. Press any buttons on the keychain remote.

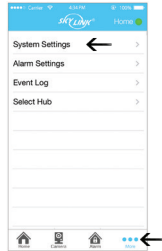


3. Once the keychain is programmed to the M-Series Main Console, the zone 1 LED light will be off.

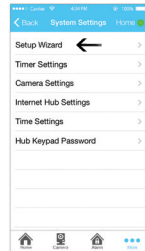


Section 2 - Programming the Remote with SkylinkNet Internet Hub

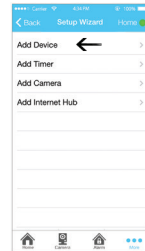
NOTE: Programming the keychain remote with the SkylinkNet Internet Hub must be done from the SkylinkNet App.



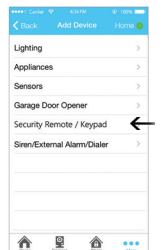
1. Go to "More" and tap on "System Settings".



2. Tap on "Setup Wizard"



3. Tap on "Add Device"



4. Tap on "Security Remote/Keypad"



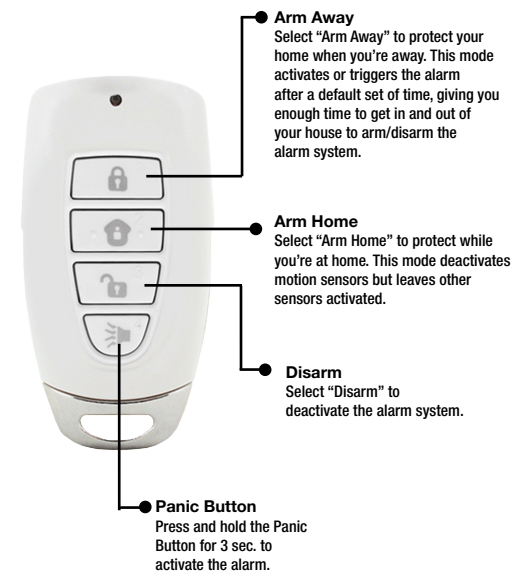
5. Name your Security Keychain Remote and tap "Continue"



6. Tap on the "Learn Now" button and press any button on the keychain remote.

Section 3 - Operation of the Security Keychain Remote

NOTE: A red led will flash when pressing any buttons on the remote.



Section 4 - Using the Keychain Remote Password Function

NOTE: This function allows you to enter a passcode before pressing a button to arm, disarm or activate the panic feature.

NOTE: The password can be 2-8 digits and can be a combination of buttons 1,2,3 and 4.

NOTE: Leave a 1 second pause period between entering the password and operating the garage door. The factory default password is 2,2,2. The password setting on the remote control (A) comes disabled as per factory default.

1. To enable or disable the password, press buttons 1 and 3 simultaneously and hold for at least 2 seconds until the LED (5) flashes quickly, but not until the LED flashes slowly.

2. Input the old password. [Factory default 2,2,2]

3. Press button 1 and 3 simultaneously to confirm. If the password is correct, the password protection will be disabled/enabled.

4. To control your alarm system enter your passcode, then press the button to control your alarm system.

NOTE: If you enable the password protection, you can only operate the keychain remote, after you input the correct password.

Section 5 - Changing the Keychain Remote Password

1. To change the password, press buttons 1 and 3 simultaneously and hold for at least six seconds. The LED (5) will change from flashing quickly to flashing slowly.
2. Input the old password (factory default 2,2,2).
3. Press buttons 1 and 3 simultaneously to confirm. If the password is wrong, the LED (5) will flash three times, and you have to restart.
4. Input the new password.
5. Press buttons 1 and 3 simultaneously to re-confirm. If the password is incorrect, the LED (5) will flash three times, and you have to restart this procedure.
6. The password has now been changed, and the password protection is now enabled.



Section 6 - Resetting the Keychain Remote Password

NOTE: After resetting the Remote, the password feature will be disabled and the password will change back to the factory default 2,2,2. You need to re-program the Keychain Remote to your M-Series Main Unit or SkylinkNet Internet Hub.

1. To reset the password, press buttons 1 and 2 simultaneously and hold for more than 15 seconds until the LED (5) flashes.
2. After you release buttons 1 and 2, the LED (5) will be turned off and the remote will be reset back to factory default password.



Section 7 - Replacing the Battery

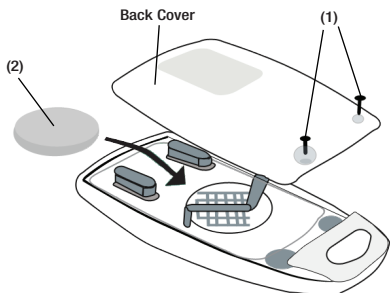
NOTE: Dispose of old battery promptly and properly.

NOTE: The Security Keychain Remote is powered by a CR2032.

When the operation range is reduced, or when the backlight LED does not flash during operation, it is time to replace the battery.

Follow the instructions below to replace the battery:

1. Undo the screws (1) on the back of the keychain remote.
2. Pry out the back cover from the keychain remote.
3. Take out the old battery (2).
4. Place the new battery (2) in position. Beware of the polarity.
5. Close the back cover with the two screws (1).



Troubleshooting M-Series Alert/Alarm System

Problem	Solution
The M-Series Main Console does not respond to the remote?	<ul style="list-style-type: none"> - You must program the remote to the M-Series Main Console or SkylinkNet Internet Hub before they can work together. - Ensure to input the correct password if enabled the password protection.
Can I erase just one remote from a zone?	<ul style="list-style-type: none"> - You must erase all the remotes/sensors and then program the remotes/sensors you want to keep.
I have multiple remotes in one zone and the M-Series Main Consoles keep flashing the LED light indicating a remote failure. How do I know which remotes having a problem?	<ul style="list-style-type: none"> - You need to test each remote individually.

Warranty

ONE YEAR WARRANTY

This product is guaranteed to be free of defects in materials and workmanship for 1 year from the date of purchase. If this product is defective, call 1-800-304-1187 for repair or replacement parts. Guarantee does not include normal wear and tear or batteries.



If you have any questions, problems or missing parts, please call Skylink Customer Support: 9:00am - 5:00pm EST, Monday-Friday.

1-800-304-1187

Or e-mail us at support@skylinkhome.com

www.skylinkhome.com

CUSTOMER SERVICE
17 Sheard Avenue,
Brampton, Ontario,
Canada L6Y1J3

P/N : 101Y194 Rev:0
©2014 SKYLINK GROUP.