



ReDAQ Shape SLX300 User Manual

isoLynx™ ReDAQ Shape SLX300 User Manual

isoLynx™ ReDAQ Shape SLX300 User Manual MA1032 Rev. A—January 2010

The information in this manual has been checked carefully and is believed to be accurate; however, Dataforth assumes no responsibility for possible inaccuracies or omissions. Specifications are subject to change without notice.

© 2010 Dataforth Corporation. All rights reserved.

isoLynx is a trademark of Dataforth Corporation.

IBM, IBM PC, XT, AT, and PS/2 are trademarks or registered trademarks of International Business Machine Corporation.

Microsoft, MS-DOS, Windows, Windows NT, Visual Studio, Visual C++, and Visual BASIC are Trademarks or registered trademarks of Microsoft Corporation.

Trademarks or registered trademarks of National Instruments Corporation

TABLE OF CONTENTS

1. INTRODUCTION

- 1.1. OVERVIEW
- 1.2. DEVELOPER AND USER VERSION
- 1.3. INSTALLATION REQUIREMENTS
- 1.4. INSTALLATION
- 1.5. LICENSE UNLOCK KEY
- 1.6. RELATED DOCUMENTS

2. ReDAQ Shape INTEGRATED DEVELOPMENT ENVIRONMENT

- 2.1. START WINDOW
- 2.2. PULL DOWN MENU
- 2.3. TOOL BAR
- 2.4. PANEL-SELECT WINDOWS
- 2.5. STATUS AND MESSAGE BAR

3. SETUP, CONFIGURE, AND ACQUIRE DATA IN ACQUIRE PANEL

- 3.1. ACQUIRE PANEL
- 3.2. COMMUNICATION
- 3.3. ANALOG INPUT [AI]
- 3.4. ANALOG OUTPUT [AO]
- 3.5. SCALE DATA
- 3.6. DISCRETE [DIO]
- 3.7. CONTROL LOOP AND ALARM OUTPUT
- 3.8. SD MEMORY CARD

4. TEST, PROCESS, AND ANALYZE DATA IN ANALYZE PANEL

- 4.1. ANALYZE PANEL
- 4.2. VIEW RAW DATA
- 4.3. VIEW ANALOG INPUT CHANNELS
- 4.4. VIEW DISCRETE DIO CHANNELS
- 4.5. READ AND WRITE MODBUS REGISTERS

5. CREATE USER INTERFACE AND EDIT CONTROLS IN PRESENT PANEL

- 5.1. PRESENT PANEL
- 5.2. TOOLBOX AND HOW TO CREATE A CONTROL
- 5.3. CONTROLS
 - 5.3.1. Button
 - 5.3.2. Picture box
 - 5.3.3. Text box
 - 5.3.4. Group box
 - 5.3.5. Label
 - 5.3.6. LED
 - 5.3.7. Switch
 - 5.3.8. Numeric edit
 - 5.3.9. Thermometer
 - 5.3.10. Slide
 - 5.3.11. Tank
 - 5.3.12. Gauge
 - 5.3.13. Meter
 - 5.3.14. Knob

- 5.3.15. Chart recorder
- 5.3.16. Scope
- 5.3.17. XY plot
- 5.3.18. Discrete waveform graph

6. QUICK START EXAMPLES

- 6.1. CLOSED LOOP CONTROL
- 6.2. DEMO PROJECTS

About Dataforth Corporation

“Our passion at Dataforth Corporation is designing, manufacturing, and marketing the best possible signal conditioning and data communication products. Our mission is setting new standards of product quality, performance, and customer service.” Dataforth Corporation, with over 20 years experience, is the worldwide leader in Instrument Class™ Industrial Electronics—rugged, high performance signal conditioning and data communication products that play a vital role in maintaining the integrity of industrial automation, data acquisition, and quality assurance systems. Our products directly connect to most industrial sensors and protect valuable measurement and control signals and equipment from the dangerous and degrading effects of noise, transient power surges, internal ground loops, and other hazards present in industrial environments.

Dataforth spans the globe with over 50 International Distributors and US Representative Companies. Our customers benefit from a team of over 130 sales people highly trained in the application of precision products for industrial markets. In addition, we have a team of application engineers in our Tucson factory ready to address and solve any in-depth application questions. Upon receipt of a quote or order, our Customer Service Department provides fast one-day response of delivery information. We maintain an ample inventory that allows small quantity orders to be shipped from stock.

Contacting Dataforth Corporation

Contact Method	Contact Information
E-Mail: Technical Support	techinfo@dataforth.com
Website:	www.dataforth.com
Phone:	520 704 1404 or 800 444 7644
Fax:	520 741 1404
Mail:	Dataforth Corporation 3331 E. Hemisphere Loop Tucson, AZ 85706

Errata Sheets

Refer to the Technical Support area of Dataforth's web site (www.dataforth.com) for any errata information on this product.

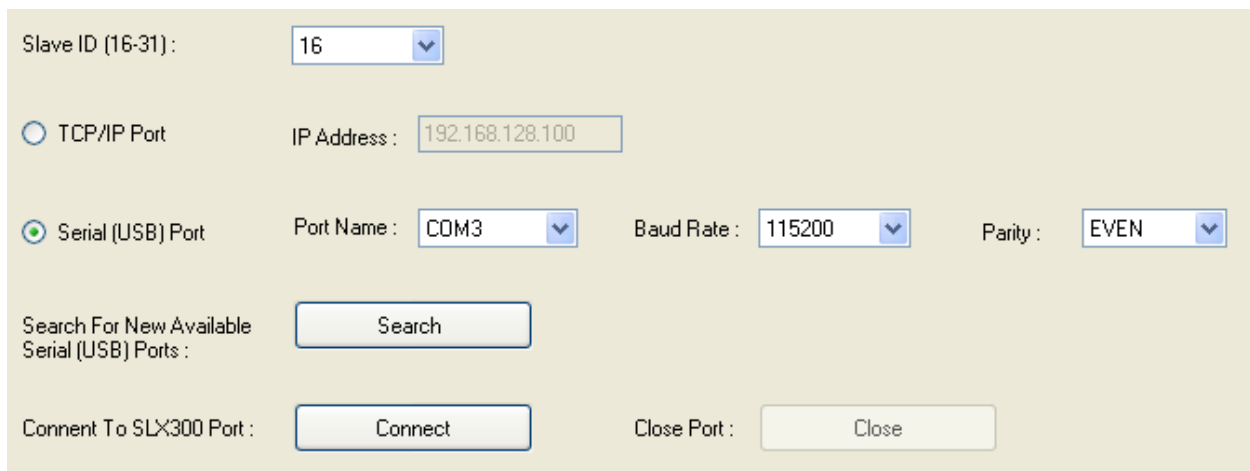
1. INTRODUCTION

1.1. OVERVIEW

ReDAQ Shape is Dataforth's out-of-the-box data acquisition software for SLX200, SLX300 and MAQ20. Users can **use a built-in function** (e.g. scope, I/O special function and data view spreadsheet) in the Acquire and Analyze panels without setup and configuration. In addition, it takes only **three easy steps** to create Presentation panels for application projects with 18 high quality controls and powerful functions like automatic control loops and timers (count-down timer, 24 hour-day timer and date/time timer), etc.


For easy set up without detailed setup and configuration:

- Select the Modbus options from the Acquire panel.




The screenshot shows a configuration window with the following elements:

- Slave ID (16-31):** A dropdown menu set to 16.
- TCP/IP Port:** An unselected radio button. **IP Address:** A text box containing 192.168.128.100.
- Serial (USB) Port:** A selected radio button. **Port Name:** A dropdown menu set to COM3. **Baud Rate:** A dropdown menu set to 115200. **Parity:** A dropdown menu set to EVEN.
- Search For New Available Serial (USB) Ports:** A button labeled Search.
- Connect To SLX300 Port:** A button labeled Connect.
- Close Port:** A button labeled Close.

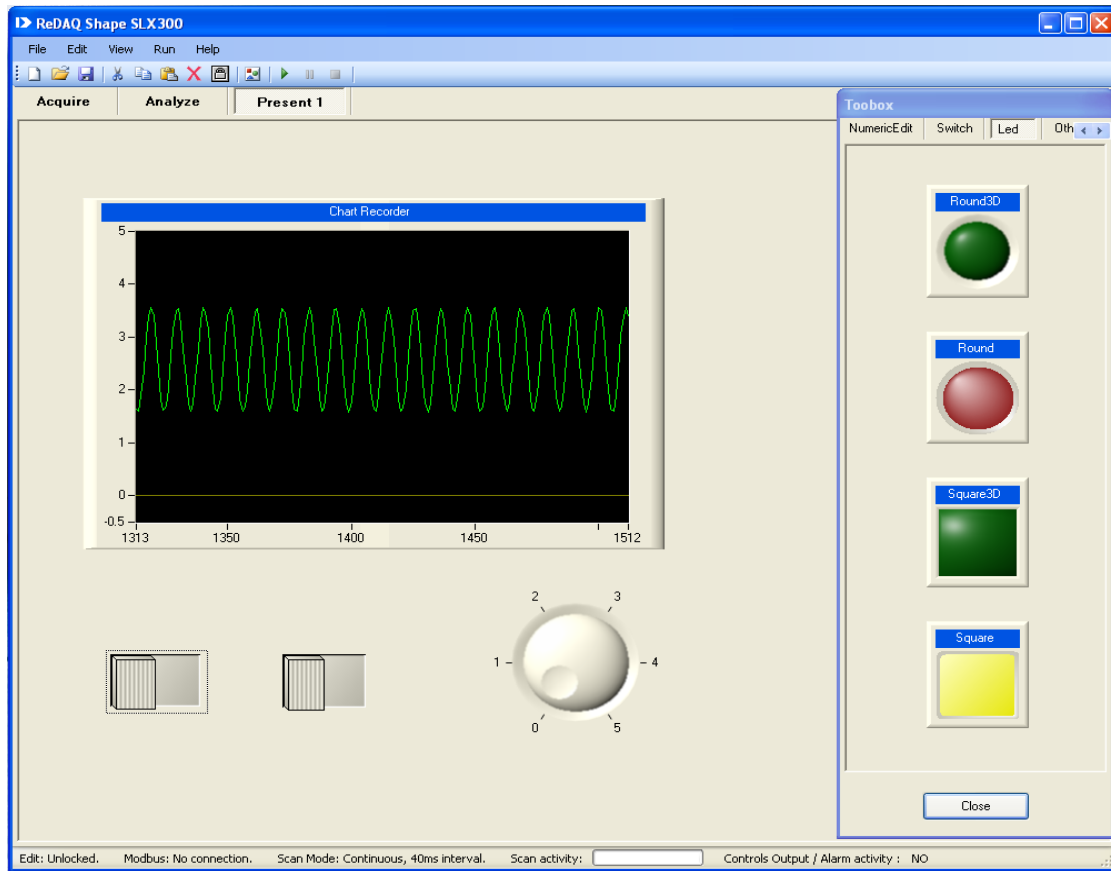
- Click on the [RUN] button , then view and process the data on the Acquire and Analyze panel. The status bar at the bottom of the screen provides indications of current activities. It includes Edit Lock, Modbus, Scan Mode, Scan Activity and Control Loop/Alarm Output.

To create Presentation panels for application projects:

- Select Acquire panel for quick setup and configuration of the system as well as testing and acquisition of data.
- Select Analyze panel to allow data logging, real-time analysis, and data processing.
- Select Present panel that has the ability to build and create custom graphical user interfaces.

After selecting a Present panel, select controls such as Switch, Scope, LED, etc. Use  to see the control tool box, select the tool desired, and then click in the presentation window. Double click on a control in the presentation window to open the control's property window. Change properties as desired and click the start button to run. See Section 5 for details.

The following illustrates a presentation panel application project:



The ReDAQ Shape SLX300 is programmed by Microsoft's Visual Studio and National Instruments' Measurement Studio. It offers 18 very high quality controls:

- Button
- Picture box
- Text box
- Group box
- Label
- Led
- Switch
- Numeric Edit
- Thermometer
- Slide
- Tank
- Gauge
- Meter
- Knob
- Chart Recorder
- Oscilloscope
- XY plot
- Discrete Waveform Graph

All the controls are easily selected to create, move, resize, cut, copy, paste, and delete. Double click on the selection to set its properties. These controls can also support any format of graphical files, so users may use any graphical software to create a graphical presentation and load it into ReDAQ Shape.

The ReDAQ Shape SLX300 offers the best and easiest way to save, open, and create graphical user interface projects, as well as to test, process, and analyze acquired data. It can log data to the hard drive, and copy, and delete data at run time.

The ReDAQ Shape SLX300 also offers convenient way to setup and configure all of SLX300's functions:

- Continuous and buffer scan modes for the 12 analog input channels and the 4 analog output channels. [Acquire Panel -> Analog Input AI, Analog Output AO]
- Automatically scale data from count to engineering units. [Acquire Panel -> Scale Data]
- 8 discrete I/O and special functions: Pulse/frequency counter, Counter with de-bounces, Waveform measurement, Time between events, Frequency generator, PWM generator, and One-shot pulses. [Acquire Panel -> Discrete Input-Output DIO]
- Customer user tag name for any input and output. [Acquire Panel -> Analog Input AI, Analog Output AO]
- Cold junction compensation for J, K, R, S, and T, 8B thermocouple modules. [Acquire Panel -> Analog Input AI]
- Control loop and alarm output. It can easily setup output activities. [Acquire Panel -> Control Loop / Alarm Output]
- Timer (count-down timer, 24 hour-day timer and date/time timer) with 10 events. [Present panel -> Toolbox -> Other Controls -> Button]

1.2. DEVELOPER AND USER VERSION

There are two versions (Developer and user version) of ReDAQ Shape in the CD. The Developer version is a version that is fully functional with the capacity of creating a project, editing the controls and setting up the parameters of SLX300. The user version can only run the finished project and it is for distribution only.

Both versions of ReDAQ Shape can be installed on the same computer.

After the project is completed, save it as a user project only and then distribute the user project and the user version of ReDAQ Shape.

The ReDAQ Shape SLX300 project file has two parts.

- A project file with extension of sl3 (Developer version) or su3 (user version). Example, project1.sl3 or project1.su3.
- A folder includes all the image and text files of the project. The folder name is project name + Images (Developer version) or project name + ImagesUser (user version). Example: project1\amges or project1\amgesUser.

1.3. INSTALLATION REQUIREMENTS

Before installing ReDAQ Shape SLX300, a computer must have the following:

- Microsoft Windows 2000/XP/Vista/Win7.
- Intel Pentium II class processor, 700MHz or higher.
- Video display – 800x600, 256 color (16-bit color recommended for user interface controls) or higher.
- Minimum of 256MB of RAM (512MB or higher recommended).
- Minimum of 405MB of free hard disk space.

1.6. RELATED DOCUMENTS

The following documents are available from Dataforth Corporation:

- isoLynx SLX300 Quick Start Guide
- isoLynx SLX300 Software User Manual
- isoLynx SLX300 Hardware User Manual
- ReDAQ Shape SLX300 User Manual

The following documents are available from Modbus IDA (www.modbus.org):

- Modbus Application Protocol Specification
- Modbus over Serial Line Specification & Implementation Guide
- Modbus Messaging on TCP/IP Implementation Guide

The following Tools and documents are available from FieldTalk (www.modbusdriver.com):

- Modbus Protocol Drivers and DLL Libraries
- FieldTalk User Manual

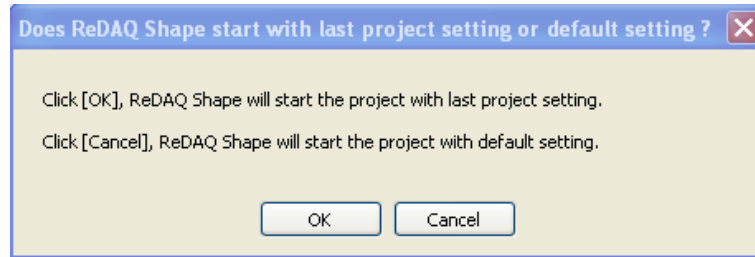
The following Tools and documents are available from National Instruments (www.ni.com):

- Free Modbus Protocol Drivers VI's and Examples
- LabVIEW User Manual
- Measurement Studio User Manual

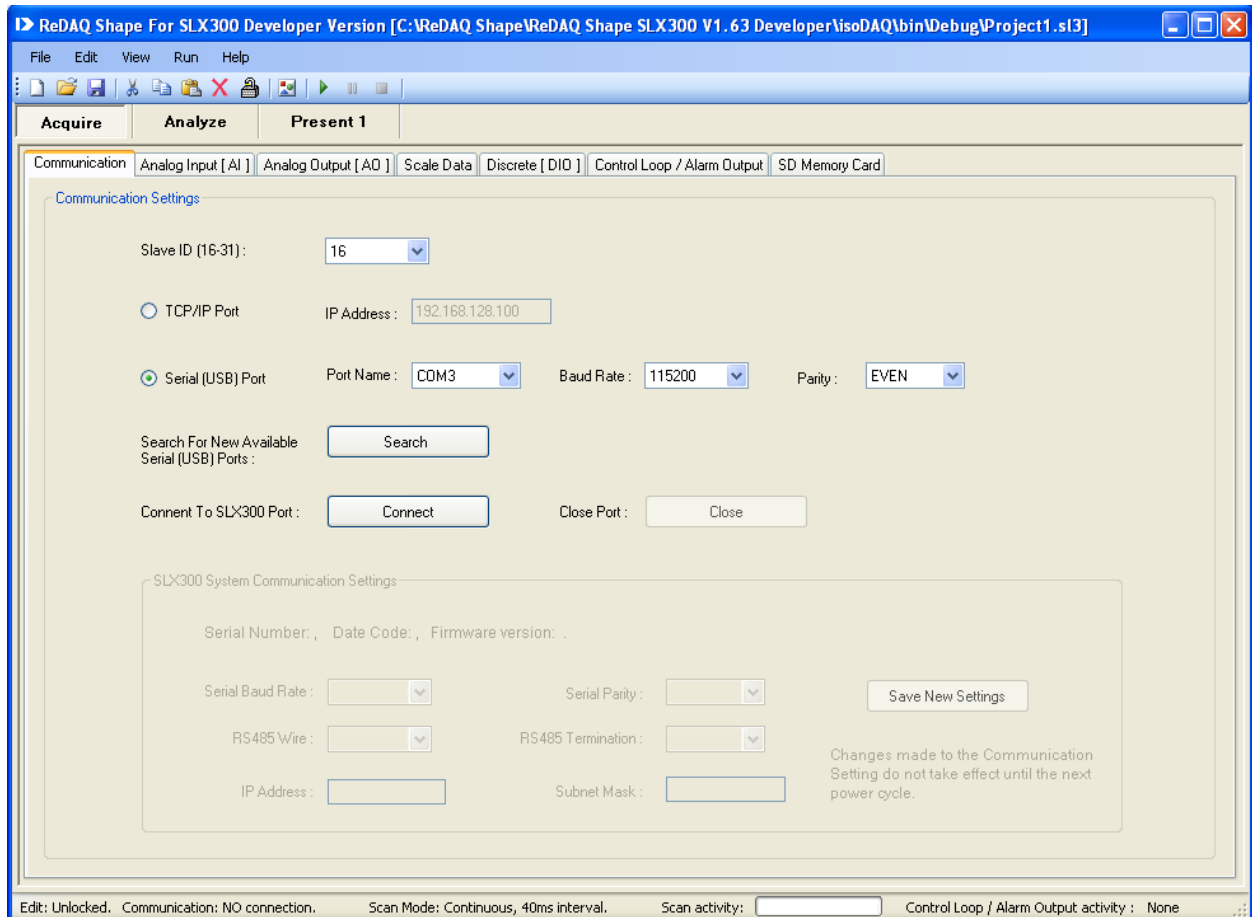
2. ReDAQ Shape INTEGRATED DEVELOPMENT ENVIRONMENT

2.1. START WINDOW

After starting ReDAQ Shape, the setting dialog box will be displayed for selecting settings, configurations of development environment and parameters. The user can select the previous project settings [OK] or the SLX300 system default settings [Cancel].



The following illustrates the Interactive Development Environment (IDE) of Shape. This IDE provides a user friendly and comprehensive integrated development environment with easy to use pull down menus, convenient toolbars, and three development windows [Acquire-Analyze-Present], which provide convenient way to setup and configure SLX300. It can process, analyze, and acquire data, as well as create and develop the users own interface, presentation projects, and automatic control loops.



2.2. PULL DOWN MENU

The pull down menu has 5 items:



File:

- **Open new project** (Start a new project and reset Acquire, Analyze and Presentation panels to default settings).
- **Open existing project.**
- **Save project** (Save the project to a file *.sl3. Each project also including image files and text files on a separate folder *Images).
- **Save project for user only** (Save the project to a user file *.su3. Each project also including image files and text files on a separate folder *ImagesUser).
- **Exit** (close ReDAQ Shape SLX300).

Edit:

- **Cut Control** (Delete the selected control and send it to the clipboard).
- **Copy Control** (Copy a selected control and send it to the clipboard).
- **Paste Control** (Paste a control to a Presentation panel).
- **Delete control** (Delete a control from a Presentation panel).
- **Edit lock/unlock** (Select lock or unlock editing functions).

View:

- **Present panel** (Add or remove a presentation panel).
- **Acquire panel** (Show or hide the Acquire panel).
- **Analyze panel** (Show or hide the Analyze panel).
- **Toolbox** (Open or close the controls toolbox).

Run:

- **Start** (Setup all the parameters of the SLX300 from the Acquire panel and run).
- **Pause** (Keeps the parameter settings and pauses run. Click again to continue run).
- **Stop** (Stop and reset all parameters).

Help:

- **ReDAQ Shape SLX300 User Manual.**
- **Enter License Unlock Code.**
- **About** (About ReDAQ Shape).

2.3. TOOL BAR

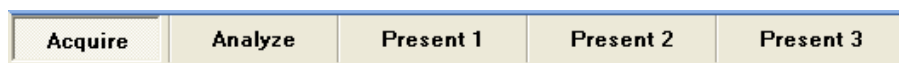
There are 12 convenient tools on the tool bar:



They are [Open new project], [Open existing project], [Save project], [Cut], [Copy], [Paste], [Delete], [Edit lock/unlock], [Toolbox open/close], [Start], [Pause] and [Stop].

2.4. PANEL-SELECT WINDOWS

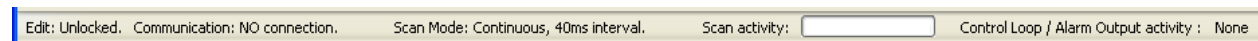
There is one Acquire panel, one Analyze panel, and up to 20 Presentation panels.



The Acquire and Analyze panels can hide and show by using the view pull down menu. The Presentation panels can be added, removed or renamed.

2.5. STATUS AND MESSAGE BAR

The status and message bar is located at the bottom of the window. It includes 6 types of information.

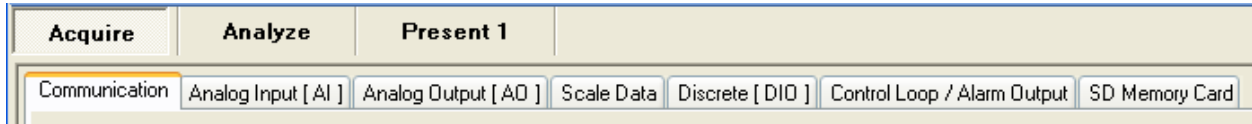


- Edit: Shows the edit lock/unlock status.
- Communication: Shows the connection status and error messages on the SLX300 connection.
- Scan mode: Shows the current scan mode setting (continuous or buffer mode).
- Scan interval: Shows the current scan interval setting.
- Scan activity: Shows the start, pause, or stop activity by using a progress bar.
- Controls Loop/Alarm Output activity: Shows the control loop output or alarm output activity and active channel A0 – A11, N0 = no active channel.

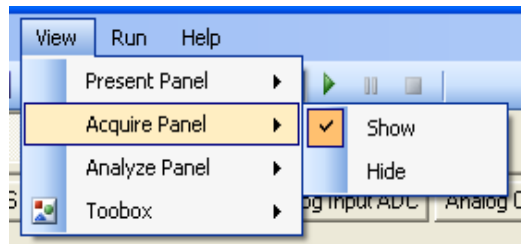
3. SETUP, CONFIGURE AND ACQUIRE DATA IN ACQUIRE PANEL

3.1. ACQUIRE PANEL

The Acquire panel provides 7 select items for setup, configuration, and acquisition of data. They are Modbus, Analog Input AI, Analog Output AO, Scale Data, Discrete DIO, Control Loop or Alarm Output and SD Memory Card.



Before starting to run Shape, the Acquire panel must be setup. After setup, the Acquire panel can be hidden using the view pull down menu as follows.



3.2. COMMUNICATION

The Communication setting window has the only settings that must be entered before running Shape. Communication setting has the following parameters:

- Slave ID: 16-31. Default = 16. Match the slave ID with the current SLX300 board.
- TCP/IP and Serial Port select. Default = Serial (USB) Port. If TCP/IP is selected, the IP Address has to be set. If serial port is selected, COM port name, baud rate, and parity have to be selected.
- IP Address. Default = 192.168.128.100
- Serial port name: COM1-COM20. Default = COM3.
- Serial port baud rates: 921600, 460800, 230400, 115200, 57600, 38400, 19200, 9600, 4800, 2400 and 1200. Default = 115200.
- Parity: EVEN, NONE, and ODD. Default = EVEN.
- To search for new available serial (USB) port, click the Search button.
- To connect to the selected communication port of SLX300, click the Connect button or click the Run button.
- To reconfigure the communication setting of SLX300 system, Select the parameter of baud rate, parity, RS485 and IP address then click Save New Setting button. The new communication setting will take effect after cycle power on the board. To go back to the SLX300 default communication setting, using the reset jump on the SLX300 board.
- To close the selected port, click the Close button or close the Shape.

Slave ID (16-31):

TCP/IP Port IP Address:

Serial (USB) Port Port Name: Baud Rate: Parity:

Search For New Available Serial (USB) Ports:

Connect To SLX300 Port: Close Port:

SLX300 System Communication Settings

Serial Number: , Date Code: , Firmware version: .

Serial Baud Rate: Serial Parity:

RS485 Wire: RS485 Termination:

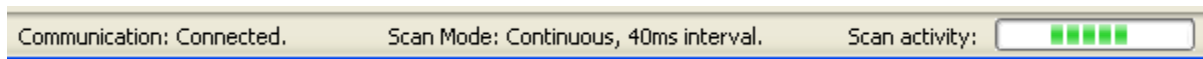
IP Address: Subnet Mask:

Changes made to the Communication Setting do not take effect until the next power cycle.

3.3. ANALOG INPUT AI

The Analog Input AI Setting window provides an easy way to test and configure the analog input AI channel. After Communication setup and Scaling Data, the analog input can be read from the Input Data Display of the Analog Input AI Setting window by clicking the start button.

Then the status bar shows:



The Input Data Display will show the analog input channel reading from a signal on the input channel.

Analog Input [AI] Settings

Continuous Scan Mode Continuous Scan Interval (Range: 10 to 65535 ms):

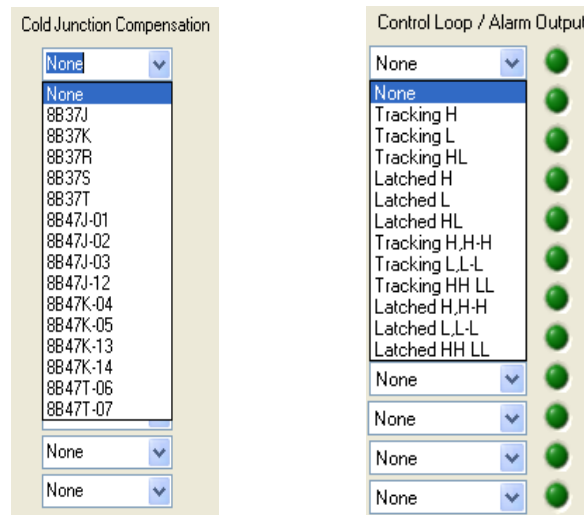
Buffer Scan Mode Buffer Scan Interval (Range: 10 to 1000 us): Buffer Size (Range: 20 to 20800 samples):

Input Channel Name	User Tag Name	Data Display	Unit	Select	Avg Weight	Max/Min	Cold Junction Compensation	Control Loop / Alarm Output
Analog Input 0	AI0	0	V	Current	4	Reset	None	None
Analog Input 1	AI1	0	V	Current	4	Reset	None	None
Analog Input 2	AI2	0	V	Current	4	Reset	None	None
Analog Input 3	AI3	0	V	Current	4	Reset	None	None
Analog Input 4	AI4	0	V	Current	4	Reset	None	None
Analog Input 5	AI5	0	V	Current	4	Reset	None	None
Analog Input 6	AI6	0	V	Current	4	Reset	None	None
Analog Input 7	AI7	0	V	Current	4	Reset	None	None
Analog Input 8	AI8	0	V	Current	4	Reset	None	None
Analog Input 9	AI9	0	V	Current	4	Reset	None	None
Analog Input 10	AI10	0	V	Current	4	Reset	None	None
Analog Input 11	AI11	0	V	Current	4	Reset	None	None


On alarm go to present panel:

- The scan mode select window allows the choice continuous scan or buffer scan mode and scan interval. Buffer scan mode, also allow the selection the buffer size in samples. In general, continuous scan mode can continuously scan all 12 analog channels' data, but at lower speed. The buffer scan mode stores data in the scan buffer, and retrieves data at the same time to provide a fast sample rate. For more information, please check the Software User Manual.
- To change the user tag name for each channel, input the text into the user tag name text box of the channel.
- To select the data for current, average, maximum and minimum of each channel, click on the select data control box.
- To input the average weight, input it to the average weight input box. The default setting is 4.
- To reset the maximum and minimum value, click on the reset button of the channel.
- To setup the cold junction compensation for a thermocouple input module, select the module name from the cold junction compensation selection box and select the C or F for degree Celsius or degree Fahrenheit. Shape automatically does the setup.
- To use the control loop output or alarm output function for the analog input channel, select the function from the control output or alarm selection box. Select tracking or latched mode for high, low, high-low, high-high, low-low, and High-High Low-Low limit. Each may be either tracking or latched control loop output or alarm. User also needs to set the output limit parameter on Control Loop / Alarm Output tab.
- To reset the alarm [latched mode and on alarm go to panel], click on the Reset Alarm button or use the button control in the user's application project.
- To enable or disable the on alarm go to alarm present panel function, click on the Enabled / Disabled on alarm go to present panel select box.

For more control loop or alarm information, please check the SLX300 Software User Manual.



3.4. ANALOG OUTPUT AO

The Analog Output AO, Setting window provides an easy way to test and configure the analog output channel. After communication setup and Scaling Data, click the start button. 

The status bar shows:

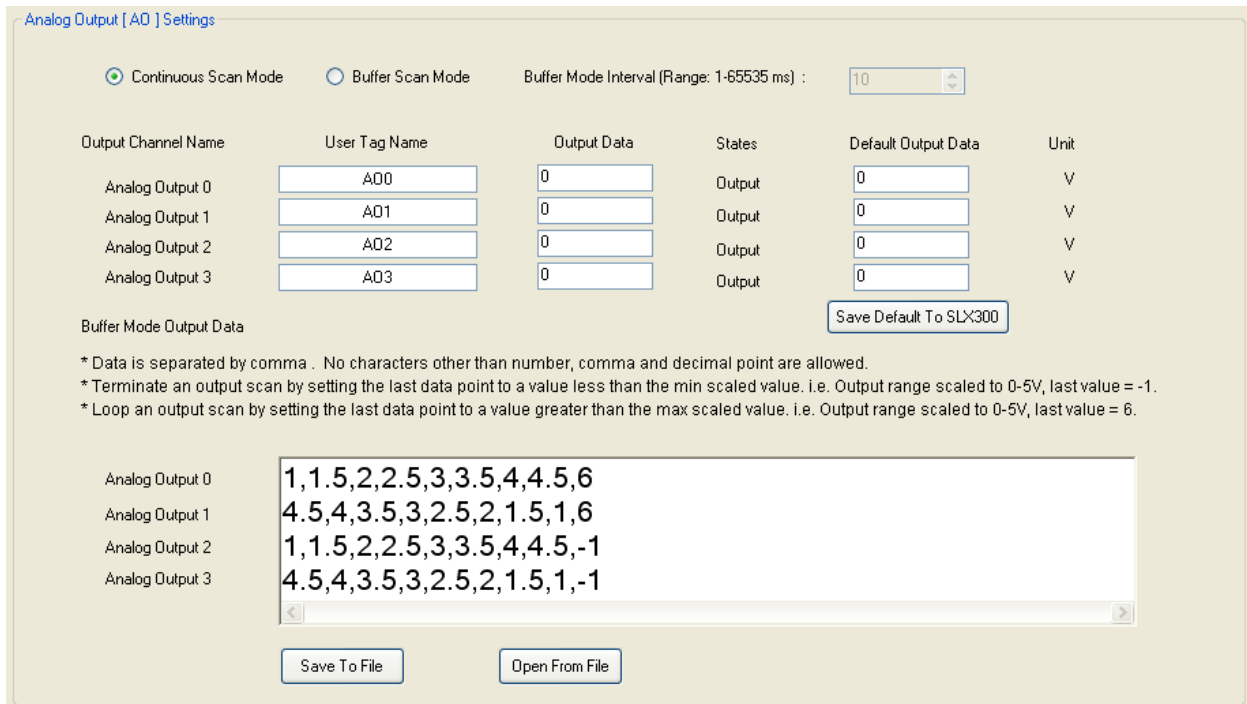
Communication: Connected.

Scan Mode: Continuous, 40ms interval.

Scan activity: 

Type in the data to Output Data box, the data will be output to the analog output channel in the Continuous scan mode

The Default Output Data are user defined values which are the known safe output values in case of loss of communication from the host or accidental power cycling of the SLX300. When SLX300 is powered on or Shape stops, the default output takes effect. To set the default output first input the value into the Default Output Data box and then clicks on the [Save Default to Hardware] button.



Output Channel Name	User Tag Name	Output Data	States	Default Output Data	Unit
Analog Output 0	AO0	0	Output	0	V
Analog Output 1	AO1	0	Output	0	V
Analog Output 2	AO2	0	Output	0	V
Analog Output 3	AO3	0	Output	0	V

Buffer Mode Output Data

* Data is separated by comma . No characters other than number, comma and decimal point are allowed.
* Terminate an output scan by setting the last data point to a value less than the min scaled value. i.e. Output range scaled to 0-5V, last value = -1.
* Loop an output scan by setting the last data point to a value greater than the max scaled value. i.e. Output range scaled to 0-5V, last value = 6.

Analog Output 0: 1,1.5,2,2.5,3,3.5,4,4.5,6
Analog Output 1: 4.5,4,3.5,3,2.5,2,1.5,1,6
Analog Output 2: 1,1.5,2,2.5,3,3.5,4,4.5,-1
Analog Output 3: 4.5,4,3.5,3,2.5,2,1.5,1,-1

Save To File Open From File

To configure the buffer mode of an AO, first stop Shape. Select buffer scan mode and set the interval in ms. Next, program the output data for each of the AO's by typing into the Buffer Mode Output Data text box, or open from a text file.

A comma separates each data point. At the end, if the value is less than minimum range, the output scan will stop. If the value is larger than maximum range, the output scan will loop back to the starting point and continue run.

Example 1: [AO range is 0 to 5], data = [0,1,2,3,4,5,6] or [0,1,2,3,4,5,7]

This example outputs a step up waveform.

Example 2: [AO range is 0 to 5], data = [5,4,3,2,1,0,-1] or [5,4,3,2,1,0,-2]

This example outputs a step down, one shot waveform.

Click on the start button to run after the setup.  To save or open the programmed output data, click on the [Save To File] or [Open From File] button.

3.5. SCALE DATA

The Scale Data setting window provides an easy way for the user to scale the analog input, AI channels, and analog output, AO channels.

SLX300 supports 12 channels of analog input, 4 channels of analog output, and 8 channels of discrete I/O. The default signal names and user tag names for ReDAQ Shape SLX300 are as follows:

- 12 channels Analog Input 0-11: AI0 – AI11.
- 4 channels Analog Output 0-4: AO0 – AO3.
- 8 channels Discrete Input-Output 0-7: DIO0 – DIO7.

They are used for the rest of the setup and configuration in Acquire, Analyze, and Presentation panels. The user can change the tag name to suit the application.

The SLX300's analog input AI and analog output AO have 12-bit resolution so that full scale range is 0-4095. In the Scale Data Setting window, full scale can be scaled to any engineering scale for each channel. By default, the analog input is 0 to 5V so set the AI full scale range to 0 to 5V. The analog output also is 0 V to 5V, so set the AO full scale range to 0V to 5V.

Data Name	User Tag Name	Full Scale	Scale To		Offset	Unit
Analog Input 0	AI0	0 - 4095 Count	0	5	0	V
Analog Input 1	AI1	0 - 4095 Count	0	5	0	V
Analog Input 2	AI2	0 - 4095 Count	0	5	0	V
Analog Input 3	AI3	0 - 4095 Count	0	5	0	V
Analog Input 4	AI4	0 - 4095 Count	0	5	0	V
Analog Input 5	AI5	0 - 4095 Count	0	5	0	V
Analog Input 6	AI6	0 - 4095 Count	0	5	0	V
Analog Input 7	AI7	0 - 4095 Count	0	5	0	V
Analog Input 8	AI8	0 - 4095 Count	0	5	0	V
Analog Input 9	AI9	0 - 4095 Count	0	5	0	V
Analog Input 10	AI10	0 - 4095 Count	0	5	0	V
Analog Input 11	AI11	0 - 4095 Count	0	5	0	V
Analog Output 0	AO0	0 - 4095 Count	0	5	0	V
Analog Output 1	AO1	0 - 4095 Count	0	5	0	V
Analog Output 2	AO2	0 - 4095 Count	0	5	0	V
Analog Output 3	AO3	0 - 4095 Count	0	5	0	V

Analog data always represents a voltage. How this value maps to actual engineering units depends on the 8B module the data is read from, or written to.

Example 1: Data from an 8B37J thermocouple input module is read. This module has a -100°C to +760°C input range and a 0V to +5V output range. A data value of 0x0000 (0V) corresponds to an input of -100°C. A data value of 0x0FFF (+5V) corresponds to an input of +760°C. Enter as below:

Data Name	User Tag Name	Full Scale	Scale To		Offset	Unit
Analog Input 0	AI0	0 - 4095 Count	-100	760	0	C

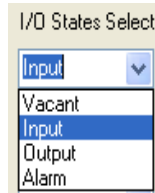
Example 2: Data is to be written to an 8B39-01 current output module. This module has a 0V to +5V input range and a 4mA to 20mA output range. A data value of 0x0000 (0V) is to correspond to an output of 4mA and a data value of 0x0FFF (+5V) corresponds to an output of 20mA. Enter as follows:

Analog Output 0	AO0	0 - 4095 Count	4	20	0	mA
-----------------	-----	----------------	---	----	---	----

3.6. DISCRETE DIO

The Discrete DIO Setting window provides an easy way to test and configure the Discrete I/O channels and I/O special functions of Pulse/frequency counter, Counter with de-bounce waveform measurement, Time-between events, Frequency generator, PWM generation and One-shot pulse.

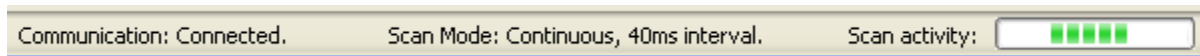
To use the discrete I/O, first select the DIO states [Vacant, Input, Output, and Alarm]. The default is Vacant. The state of alarm is automatically set by Control Loop / Alarm Output setting.



Then, select the DIO interval in ms, and click the start button.



The status bar shows:



Now, the user can read DIO data from the [Input Data Display] and write to DIO using the [Output Data 0 or 1] box.

Discrete Input-Output [DIO] Setting

DIO Channel Name	User Tag Name	Input Data Display	Output Data	DIO States Select	Default Output Data	Default DIO States Select	DIO Interval (Range: 10-65535 ms)
DIO 0	DIO0	0	0	Vacant	0	Vacant	100
DIO 1	DIO1	0	0	Vacant	0	Vacant	
DIO 2	DIO2	0	0	Vacant	0	Vacant	
DIO 3	DIO3	0	0	Vacant	0	Vacant	
DIO 4	DIO4	0	0	Vacant	0	Vacant	
DIO 5	DIO5	0	0	Vacant	0	Vacant	
DIO 6	DIO6	0	0	Vacant	0	Vacant	
DIO 7	DIO7	0	0	Vacant	0	Vacant	

Save Default To SLX300

Timer 1

Disarm/Arm/Enabled: Disarm

Pulse/Frequency Counter | Counter With Debounce | Waveform Measurement | Time Between Events | Frequency Generator | PWM Generation | One-Shot Pulse

Input Polarity: Rising | Timer Gate: Positive | Pulse Count: 0 | Frequency Count: 0 | Ticks per Revolution: 1 | RPM: 0

Timer 2

Disarm/Arm/Enabled: Disarm


Pulse/Frequency Counter | Counter With Debounce | Waveform Measurement | Time Between Events | Frequency Generator | PWM Generation | One-Shot Pulse

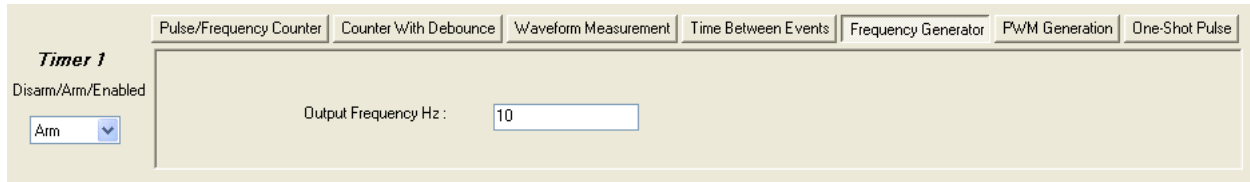
Input Polarity: Rising | Timer Gate: Positive | Pulse Count: 0 | Frequency Count: 0 | Ticks per Revolution: 1 | RPM: 0

The Default Output Data and the Default I/O States Select box are also need to be set. It will set the I/O states when the board is powered on and Shape is stopped. After setting up the defaults, they must be saved to the SLX300 hardware by clicking on the [Save Default To SLX300] button. The default settings will take effect after powering up.

To operate the I/O special function, first stop Shape. There is no need to setup I/O states. ReDAQ Shape SLX300 does this setup automatically for special function.

Frequency generator example:

- Select the Frequency generator function in timer 1.
- Setup the output frequency.
- Set [Arm/Disarm/Enabled] to Arm.
- Click the start button. 




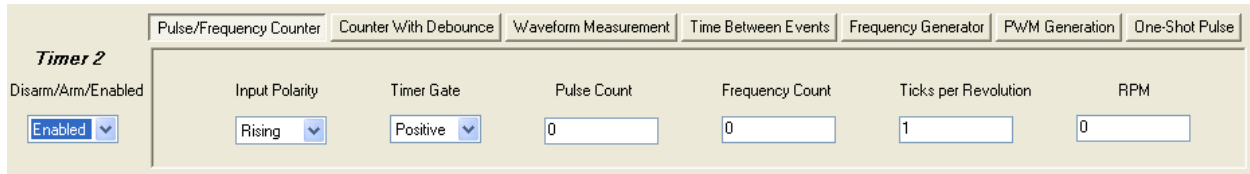
Timer 1

Disarm/Arm/Enabled:

Output Frequency Hz:

Pulse/Frequency counter example:

- Select the Pulse / Frequency counter function in timer 2.
- Setup input polarity, timer gate, and ticks per revolution.
- Set [Arm/Disarm/Enabled] to Enabled. Create Button and Numeric Edit that connect to this function by setup the property on the present panel.
- Click the start button,  and then use the button and numeric edit to control and display the frequency on the present panel.



Timer 2

Disarm/Arm/Enabled:

Input Polarity:

Timer Gate:

Pulse Count:

Frequency Count:

Ticks per Revolution:

RPM:

3.7. CONTROL LOOP OR ALARM OUTPUT

This window allows the user to select control loop or alarm output of [high low] and [high-high low-low] for (DIO0 - DIO7, AO0 - AO3), configure the I/O active states, and set the limits for high, low, high-high, low-low, etc., and dead-band. For more information, please check the SLX300 Software User Manual.

User Tag Name	Output To Channel						High		Low		H-H		L-L	
	Config	High Low	Config	High-High Low-Low	High Limit	Low Limit	HH Limit	LL Limit	Deadband	Deadband	Deadband	Deadband		
AI0	Active H	A03	Active H	A03	5	0	5	0	0	0	0	0		
AI1	Active H	A03	Active H	A03	5	0	5	0	0	0	0	0		
AI2	Active H	A03	Active H	A03	5	0	5	0	0	0	0	0		
AI3	Active H	A03	Active H	A03	5	0	5	0	0	0	0	0		
AI4	Active H	A03	Active H	A03	5	0	5	0	0	0	0	0		
AI5	Active H	A03	Active H	A03	5	0	5	0	0	0	0	0		
AI6	Active H	A03	Active H	A03	5	0	5	0	0	0	0	0		
AI7	Active H	A03	Active H	A03	5	0	5	0	0	0	0	0		
AI8	Active H	A03	Active H	A03	5	0	5	0	0	0	0	0		
AI9	Active H	A03	Active H	A03	5	0	5	0	0	0	0	0		
AI10	Active H	A03	Active H	A03	5	0	5	0	0	0	0	0		
AI11	Active H	A03	Active H	A03	5	0	5	0	0	0	0	0		

To use control loop or alarm output function:

1. Select the control loop or alarm output working mode for analog input channels AI0-AI11 in the [Analog Input AI] setting window.

Analog Input [AI] Setting

Continuous Scan Mode Continuous Scan Interval (Range: 10 to 65535 ms):

 Buffer Scan Mode Buffer Scan Interval (Range: 10 to 1000 us): Buffer Size (Range: 20 to 20800 samples): Continuous

Input Channel Name	User Tag Name	Data Display	Unit	Select	Ave Weight	Max/Min	Cold Junction Compensation	Control Loop / Alarm Output
Analog Input 0	AI0	0	V	Current	4	Reset	None	None
Analog Input 1	AI1	0	V	Current	4	Reset	None	Tracking H
Analog Input 2	AI2	0	V	Current	4	Reset	None	Tracking L
Analog Input 3	AI3	0	V	Current	4	Reset	None	Tracking HL
Analog Input 4	AI4	0	V	Current	4	Reset	None	Latched H
Analog Input 5	AI5	0	V	Current	4	Reset	None	Latched L
Analog Input 6	AI6	0	V	Current	4	Reset	None	Latched HL
Analog Input 7	AI7	0	V	Current	4	Reset	None	Tracking HH
Analog Input 8	AI8	0	V	Current	4	Reset	None	Tracking LL
								Tracking HH LL
								Latched HH
								Latched LL
								Latched HH LL
								None

2. Configure the output I/O channel, state, and limits in the [Control loop / Alarm output] setting window.

Control Loop / Alarm Output Setting

Output To (User Tag Name)

User Tag Name	Config	High Low	High-High Low-Low	High Limit	Low Limit	HH Limit	LL Limit	H-Deadband	L-Deadband	HH-Deadband	LL-Deadband
AI0	Active H	A00	DI00	3	2.5	5	0	0.05	0.05	0	0

3. Shape automatically set the DIO state to **Alarm** in the [Discrete Input-Output DIO] setting window or state of AO to **Alarm** in the [Analog Output AO] setting window.

Discrete Input-Output [DIO] Setting

DIO Channel Name	User Tag Name	Input Data Display	Output Data	DIO States Select	Default Output Data	Default DIO States Select	DIO Interval (Range: 10-65535 ms)
DIO 0	DI00	0	0	Vacant	0	Output	
DIO 1	DI01	0	0	Vacant	0	Vacant	100
DIO 2	DI02	0	0	Alarm	0	Vacant	
DIO 3	DI03	0	0	Vacant	0	Vacant	

Analog Output [AO] Settings

Continuous Scan Mode Buffer Scan Mode Buffer Mode Interval (Range: 1-65535 ms) :

Output Channel Name	User Tag Name	Output Data	States	Default Output Data	Unit
Analog Output 0	AO0	0	Alarm	0	V
Analog Output 1	AO1	0	Alarm	0	V
Analog Output 2	AO2	0	Output	0	V
Analog Output 3	AO3	0	Output	0	V

3.8. SD MEMORY CARD

The SD Memory card setting window provides an easy way to set up the data log parameters, check the memory card size and data log progress, Start/stop data log. This function is for 1U box model only.

SD Memory Card Settings (For 1U Box model Only)

File Name:

Interval: ms

Samples:

Start Continuous Scan Mode

ModBus Register Start Address and Qty:


Start Address 1	<input type="text" value="0"/>	Address 1 Qty	<input type="text" value="12"/>
Start Address 2	<input type="text" value="0"/>	Address 2 Qty	<input type="text" value="0"/>
Start Address 3	<input type="text" value="0"/>	Address 3 Qty	<input type="text" value="0"/>
Start Address 4	<input type="text" value="0"/>	Address 4 Qty	<input type="text" value="0"/>

SLX300 ModBus Registers Map:

12 CH analog input Current = 0 - 11
12 CH analog input Min = 12 - 23
12 CH analog input Max = 24 - 35
12 CH analog input Avg = 36 - 47
4 CH analog output = 4352 - 4355
8 CH DID staus = 32800 - 32807
Alarm staus = 8240 (HL), 8241 (HHLL).

*For more details see Software User Manual

Check Card/Progress Please Insert SD Memory Card.

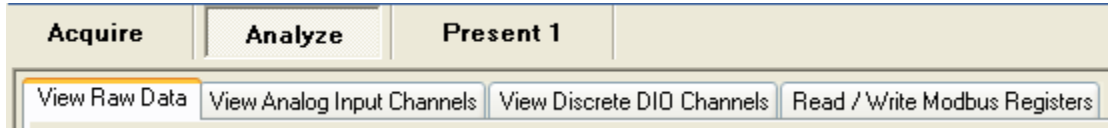
Start Log  Log In Progress Stop Log


- To input the file name, click on file name text box. The default file name is File1. The maximum file name size is 7 characters.
- To input the interval, click on the interval data input box. The default and minimum is 100 ms.
- To input the number of samples, click on the #samples input box. The default is 100 samples.
- There are 4 modbus register start address and qty for user to select. The default is start address at 0 and the qty is 12 for address 1.
- To check the SD memory card status, click on the Check Card/Progress button. The status text will show the card is available, size and data log progress.
- To start log data, click the start log button.
- To stop log data, click the stop log button.
- To start continuous scan mode without running Shape, click the Start Continuous Scan Mode button.

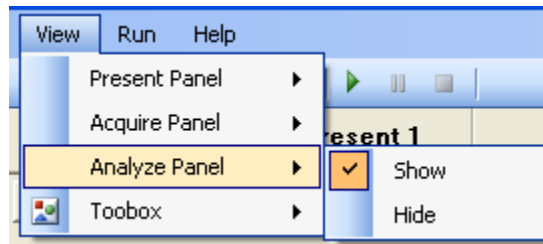
TEST, PROCESS, AND ANALYZE DATA IN ANALYZE PANEL

4.1. ANALYZE PANEL

The Analyze panel provides 4 selected function windows [View Raw Data, View Analog Input Channels, View Discrete DIO Channels, and Read / Write Modbus Registers] to test, process, and analysis-acquired data for SLX300 without any programming.

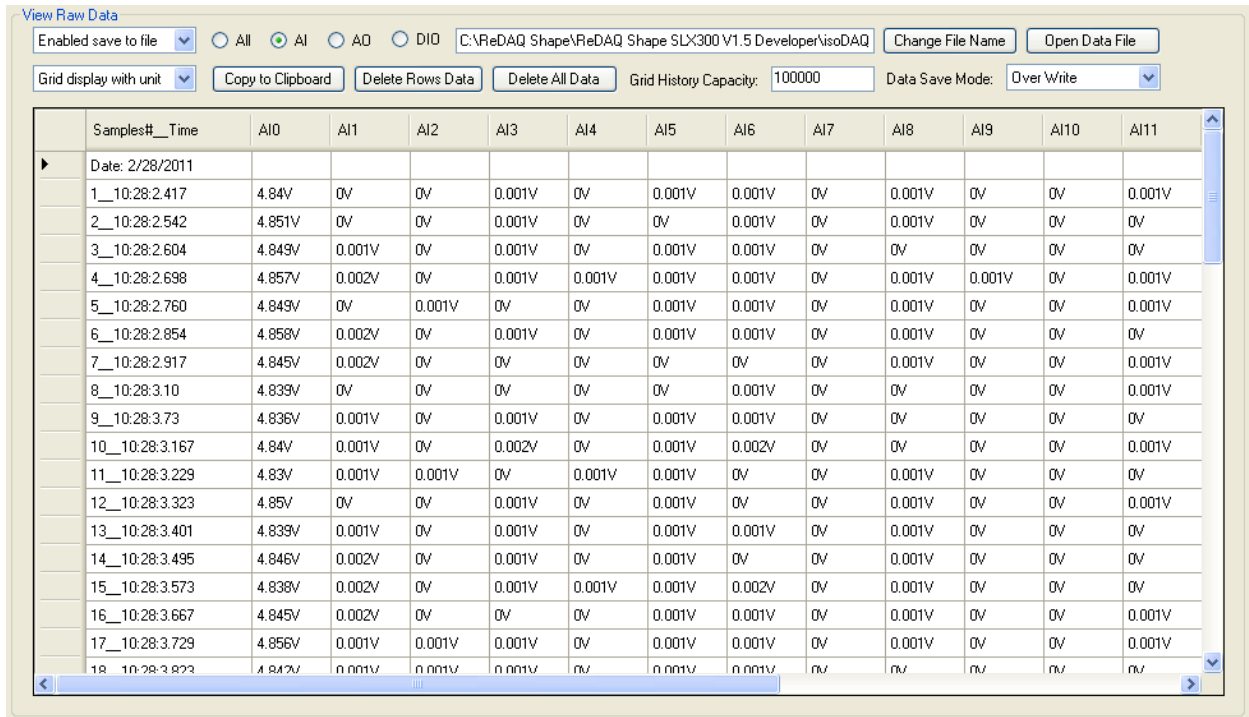


To use the Analyze panel, click the start button at any time.  Selecting the View pull down menu can hide the Analyze panel.



4.2. VIEW RAW DATA

The View Raw Data window provides a data logging that save data to a text file for (AI0-AI11, AO0-AO3, and DIO0-DIO7) and a spreadsheet. These allow saving, reading, editing, copying, and deleting while Shape is running.

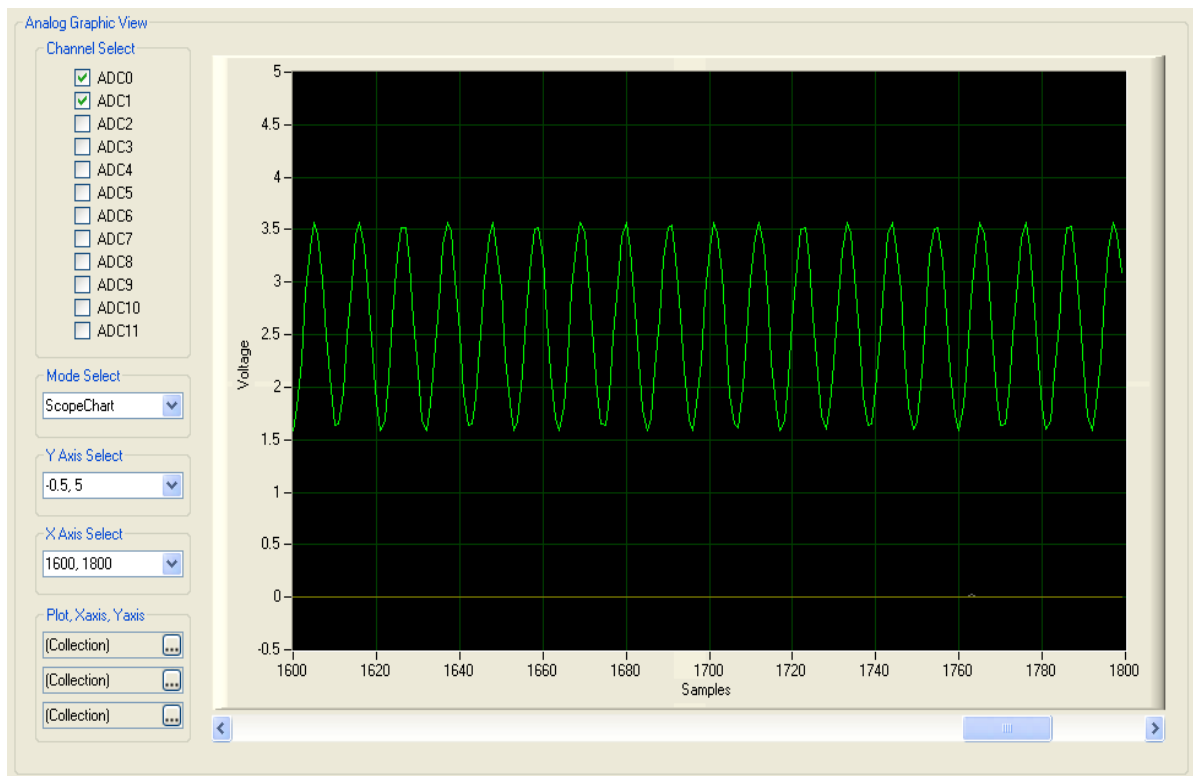


Samples#_Time	AI0	AI1	AI2	AI3	AI4	AI5	AI6	AI7	AI8	AI9	AI10	AI11
Date: 2/28/2011												
1_10:28:2.417	4.84V	0V	0V	0.001V	0V	0.001V	0.001V	0V	0.001V	0V	0V	0.001V
2_10:28:2.542	4.851V	0V	0V	0.001V	0V	0V	0.001V	0V	0.001V	0V	0V	0V
3_10:28:2.604	4.849V	0.001V	0V	0.001V	0V	0.001V	0.001V	0V	0V	0V	0V	0V
4_10:28:2.698	4.857V	0.002V	0V	0.001V	0.001V	0.001V	0.001V	0V	0.001V	0.001V	0V	0.001V
5_10:28:2.760	4.849V	0V	0.001V	0V	0V	0.001V	0.001V	0V	0.001V	0V	0V	0.001V
6_10:28:2.854	4.858V	0.002V	0V	0.001V	0V	0.001V	0.001V	0V	0.001V	0V	0V	0V
7_10:28:2.917	4.845V	0.002V	0V	0V	0V	0V	0V	0V	0.001V	0V	0V	0.001V
8_10:28:3.10	4.839V	0V	0V	0V	0V	0V	0.001V	0V	0V	0V	0V	0.001V
9_10:28:3.73	4.836V	0.001V	0V	0.001V	0V	0.001V	0.001V	0V	0V	0V	0V	0V
10_10:28:3.167	4.84V	0.001V	0V	0.002V	0V	0.001V	0.002V	0V	0V	0V	0V	0.001V
11_10:28:3.229	4.83V	0.001V	0.001V	0V	0.001V	0.001V	0V	0V	0.001V	0V	0V	0V
12_10:28:3.323	4.85V	0V	0V	0.001V	0V	0.001V	0V	0V	0.001V	0V	0V	0.001V
13_10:28:3.401	4.839V	0.001V	0V	0.001V	0V	0.001V	0.001V	0V	0.001V	0V	0V	0V
14_10:28:3.495	4.846V	0.002V	0V	0.001V	0V	0.001V	0V	0V	0.001V	0V	0V	0V
15_10:28:3.573	4.838V	0.002V	0V	0.001V	0.001V	0.001V	0.002V	0V	0.001V	0V	0V	0V
16_10:28:3.667	4.845V	0.002V	0V	0V	0V	0.001V	0.001V	0V	0.001V	0V	0V	0.001V
17_10:28:3.729	4.856V	0.001V	0.001V	0.001V	0V	0.001V	0.001V	0V	0.001V	0V	0V	0.001V
18_10:28:3.823	4.842V	0.001V	0.001V	0.001V	0V	0.001V	0.001V	0V	0V	0V	0V	0V

- To enable or disable data logging, select from the enable/disable save to file selection box. There is no size limit for the file. The data log speed is selected by analog input scan Interval.
- To select save or display data with / without unit, select from [enabled save to file] or [grid display with units] box.
- To select type of data to be recorded to the logging text file, click on ALL (all data) or AI (analog input data only) or AO (analog output data only) or DIO (discrete I/O only).
- To change the data logging text file name, click on the [Change File Name] button.
- To change the data save mode, click on the data save mode select box and select mode of Over Write, Append and Auto File Increment.
- To open the data logging text file, click on the [Open Data File] button.
- To copy data to another application such as Microsoft Excel, first select the data in spreadsheet, and then click on the [copy to clipboard] button. The data is now in the clipboard and ready to be pasted to other software applications such as Microsoft Excel.
- To delete row data in spreadsheet, select the row data to be deleted, and then click on the delete rows button.
- To delete all data in spreadsheet, click on the delete all button.
- To set the history capacity for data grid and graphic, input to the Data Grid and Graphic History Capacity Box. The default setting is 100000.

4.3. VIEW ANALOG INPUT CHANNELS

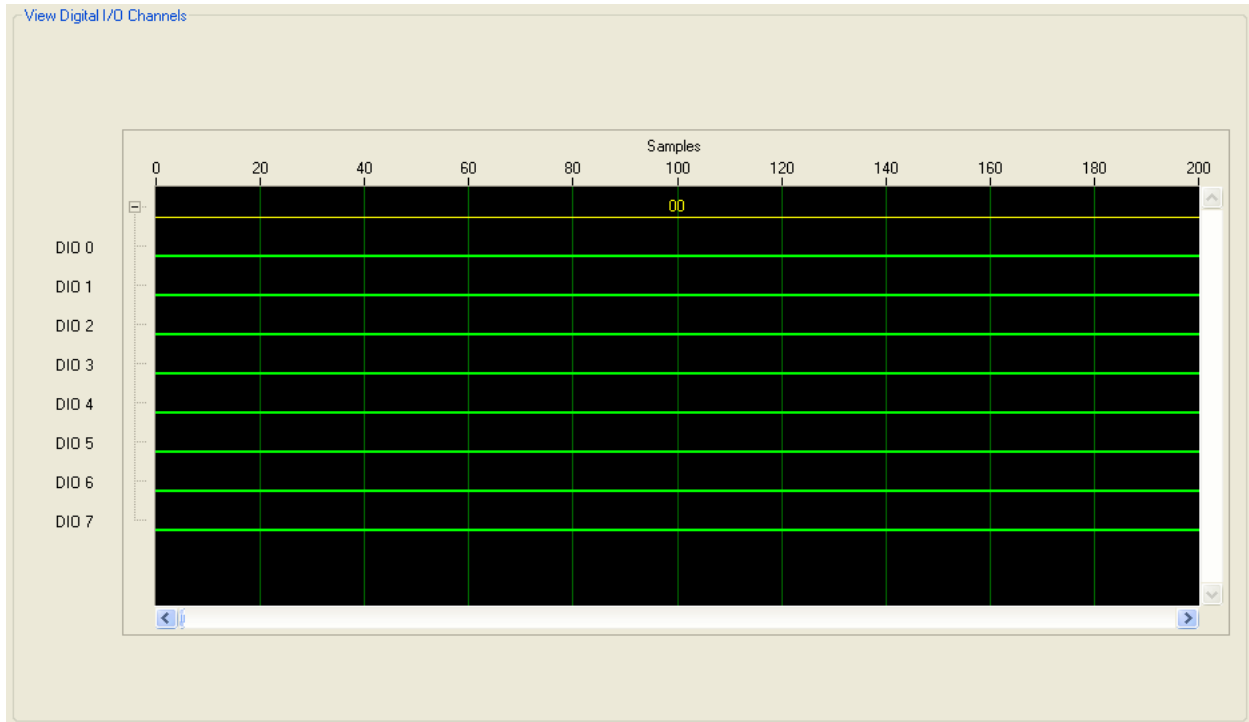
The View Analog Input Channels window provides different modes to look at the acquired data by selecting the mode functions of **Autoscaleloose**, **Autoscaleexact**, **Scopechart**, and **Stripchart**.



- To select the analog input channel, check the channel select box.
- To change Y axis scale, use the Y axis select box.
- To change X axis scale, use the X axis select box.
- To set other properties of plot, X axis, and Y axis, click on the Collection button.

4.4. VIEW Digital I/O CHANNELS

The View Digital I/O Channels window provides an easy way to view the discrete I/O data graphically. The X scale is the sample number and the Y scale is the discrete I/O channel number (DIO0 – DIO7).



4.5. READ AND WRITE MODBUS REGISTERS


The Read / Write Modbus Registers window provides a way to directly read and write Modbus registers. The user can then easily use SLX300 Modbus commands to setup, configure, test, and operate the SLX300. For detailed information about SLX300 Modbus commands, please check the SLX300 Software Manual. The read function can read up to 24 registers at once. The write function can write to 12 registers at once.

The screenshot shows a window titled "Modbus Read/Write". It has two main sections: "Read" and "Write".

Read Section: A "Read" button is followed by "Start address" (input field with "0") and "QTY" (input field with "0"). Below this are two rows of 12 small input fields, each containing the number "0".

Write Section: A "Write" button is followed by "Start address" (input field with "0") and "QTY" (input field with "0"). Below this is one row of 12 small input fields, each containing the number "0".

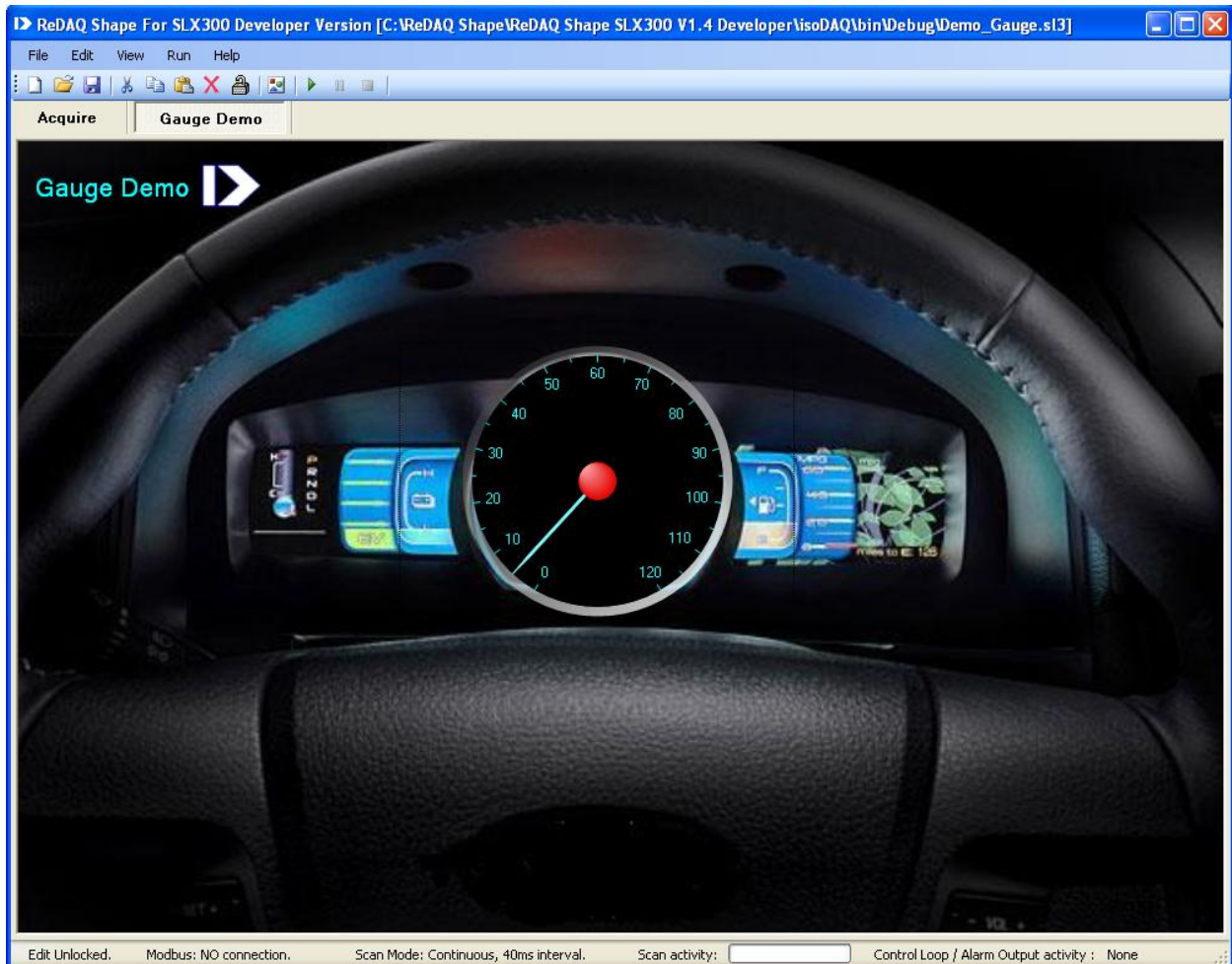
To Read and write Modbus registers:

- Click the start button. 
- Input the read and write start address and QTY(quantity), then click on the read or write button

5. BUILD, CREATE USER INTERFACE AND EDIT CONTROLS IN PRESENT PANEL

5.1. PRESENT PANEL


The presentation panel allows the user to build and create up to 20-user interfaces, instrument panels. The user can easily add and remove these panels by using the View pull down menu and can also add controls such as scope, switch, LED, etc. These controls can be resized, moved, cut, copied, pasted, deleted, and saved to a project file. Most importantly, the property of these controls and even the presentation panel itself can be setup by double clicking on them.



To start editing in Present panel, first, check edit lock/unlock status on the right bottom of the ReDAQ Shape SLX300 window. Make sure it is in the unlock state to enable editing.

Edit: Unlocked.

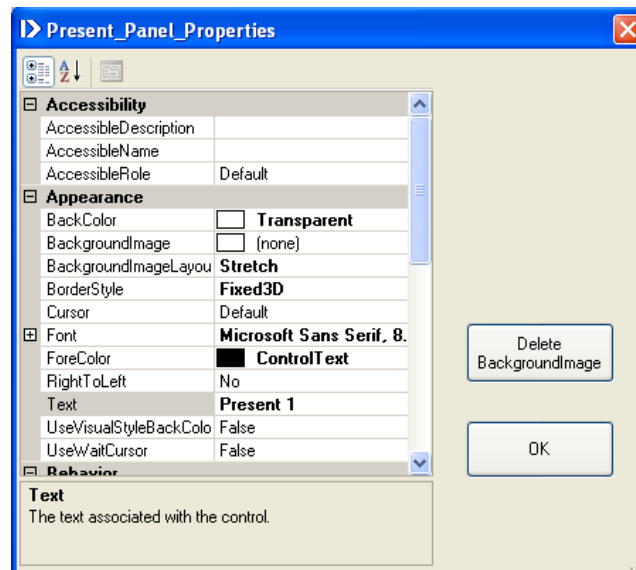
If locked, controls cannot be resized, moved, cut, copied, pasted or deleted. Also, the user cannot setup the properties of any controls or the presentation panel.

To lock or unlock editing, click on the lock/unlock button on the tools bar. 

Present panel is the basic instrumentation panel of the user interface. The user can load any type of image, picture file into the background image and or change the panel name, background color, etc.

One of the main objectives of ReDAQ Shape SLX300 is to enable the user to build an instrument panel that can have background images of the user's choice from other graphical software, e.g. Paint, Photoshop etc. Then load these into the Present panel background or picture box and put the instrument controls on top of the image as shown above. **This could include plant schematic drawings to populate with Shape controls.**

To setup the properties of Present panel, double click on Present panel. The Present panel property window will appear.



There are 7 main items in Present panel properties:

- Accessibility,
- Appearance
- Behavior
- Data
- Focus
- Layout
- Miscellaneous

Only Appearance can be set and the others are fixed.


To set Present panel name, type into the Text Property. Then set the font and foreground colors.

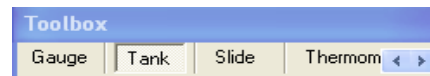
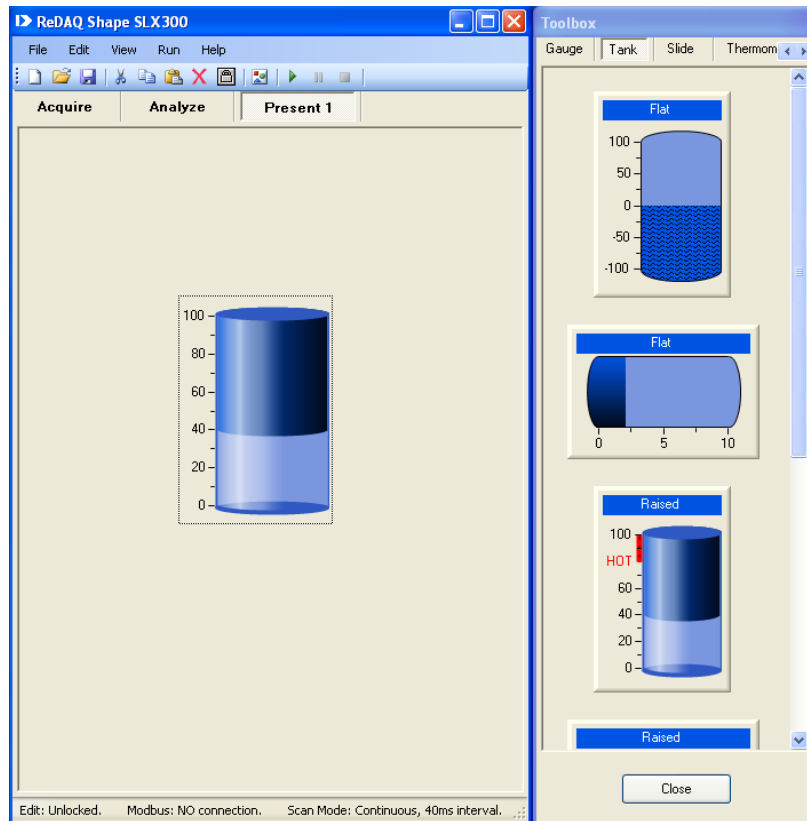
To load the background image, click on the background image box; then load from any type of graphical file. Optionally set the background image layout to none, tile, center, stretch, or zoom.

To delete the background image, click on the delete button.

5.2. THE TOOLBOX AND CREATING A CONTROL

The toolbox shows all the 18 controls with different styles. Select them from the toolbox; then create on the Present panel by clicking in the Present panel.

To open or close the toolbox window, click on the toolbox icon  or go to the pull down menu. Select Toolbox from View.



To select different tools use the tools scroll bar.

To select a control, click on that image of the control. Selected control image will be highlighted.

To create the control on the Present panel, click and hold on the left mouse button on Present panel, and drag to the desired size of the control. The control will appear.

To move the control, click and hold the left mouse button on the control, and drag to the desired position.

To resize the control, click and hold the right mouse button on the control, and drag to the desired size.

To setup the control properties, double click on the control, and the property window will appear.

To cut, copy, paste, and delete, selects the control by clicking on the control. Then click on the button of desired function, e.g. cut, copy, paste and delete.

5.3. CONTROLS

The ReDAQ Shape SLX300 is programmed by Microsoft' Visual Studio and National Instruments' Measurement Studio. It offers 18 very high quality controls:

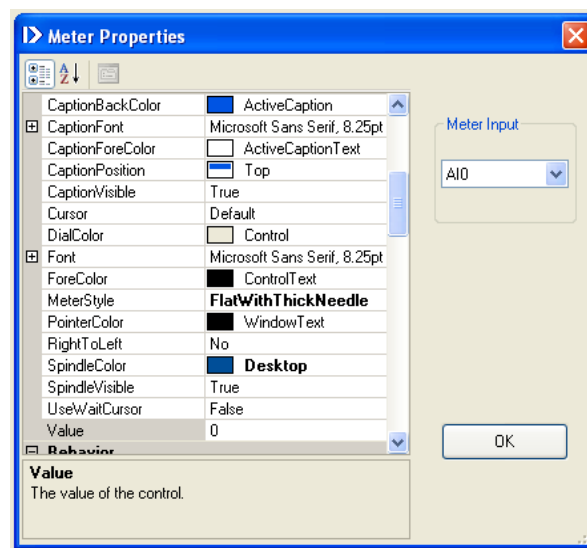
- Button
- Picture box
- Text box
- Group box
- Label
- Led
- Switch
- Numeric Edit
- Thermometer
- Slide
- Tank
- Gauge
- Meter
- Knob
- Chart Recorder
- Scope
- XY plot
- Discrete Waveform Graph

Please get more information about controls and controls' properties from Microsoft Visual Studio user manual and National Instruments' Measurements Studio User Manual.

Shape allows each project to create up to 12 controls of chart recorder, scope, XY plot and discrete waveform graph and up to 40 controls of other.

All the controls can easily be selected and created from toolbox. They can also be easily moved, resized, cut, copied, pasted, or deleted.

The most powerful feature of ReDAQ shape SLX300 software is that by double clicking on the control, the property window will show for the property setting. Click Start to run after setup.



The control property window is separated into two parts.

In left pane of the property window, is the property box to setup the properties of the control itself such as appearance (background, name, font, style and color etc.), scale, and layout etc.

In the right pane of the property window, are the properties of input or output selection for the control.

Using the default tag name:

- The AI0 - AI11 represent 12 analog input channels.
- The AO0 - AO3 represent 4 analog output channels.
- The DIO0 – DIO7 represent 8 discrete I/O channels.

For example, if select AI0 on the meter, input select box, analog input channel 0 of the SLX300 is connected to the meter.

Some of the controls, such as picture box, text box, group box and label, do not have an input/output select box in their property window. They are used only as graphic or text displays for the instrument front panel.

5.3.1. Button

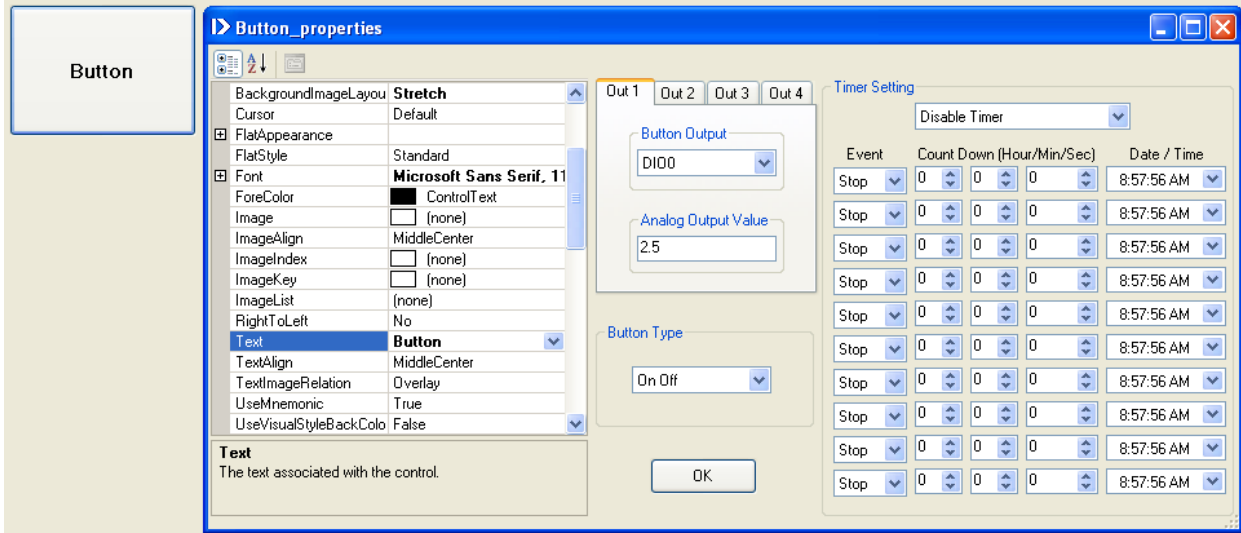
Button is a multiple output control that has up to four outputs with the following functions:

- Set discrete output DIO, DIO0 – DIO7, to [1 = On] or [0 = Off].
- Set analog output AO0 – AO3 to [a preset value = On] or [0 = Off].
- Reset the alarm-latched mode.
- Timer1 and Timer2 arm/disarm.
- Timer (count down timer, 24 hour day timer and date/time timer).

The Button also can choose the output type [On / Off], [On only] and [Off only]. For example, if using one button as on button and another as off button, set one as on only type and another one as off only type and then connect them to the same I/O channel.

There are 6 categories in the property window, but only the appearance and layout are useful. The most important appearance property is the image property that can load any type of image.

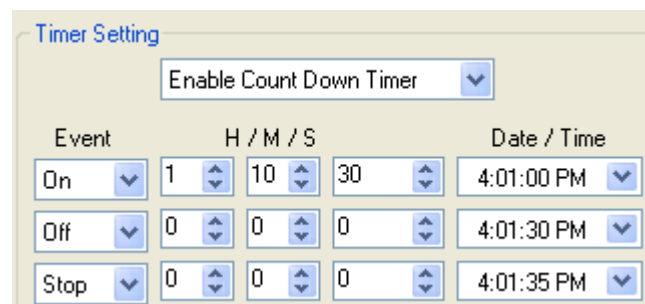
- To select the output function, click the Button Output select box. Default Out1 set to I/O 0 and Out2-3 set to close.
- To select the button type, click the Button Type select box.
- To preset the value for an Analog Output, input it to the Analog Output Value box. Default setting is 2.5 V.
- To input or select properties, click on the desired property box.



- To Enable the Timer, click the timer enable/disable select box and select the desired timer function and then set up the event (on, off, stop and loop): Hour/Min/Sec (H/M/S) for countdown timer and date/time for Date/Time timer. Whenever the timer starts, it always executes the first event (Event on=1 and off=0 on the discrete I/O. Event loop is to loop back to the first event and stop is to abort the timer function).

Count down timer: Click on the button; the count down timer starts to execute the first event and then counts down the first timer. When the count is zero, it will go to the next event until 10 events are finished.

Example1: A countdown timer starts at [On], countdown to 1:10:30 then turns [Off]. Configure the discrete I/O to output and data to 0. Set the timer as below:



Example2: A countdown timer starts at [Off], countdown 30 sec then turns [On] for 10min. Configure the discrete I/O to output and data to 0. Set the timer as below:

Timer Setting

Enable Count Down Timer

Event	H / M / S			Date / Time
Off	0	0	30	4:01:00 PM
On	0	10	0	4:01:30 PM
Off	0	0	0	4:01:35 PM
Stop	0	0	0	4:01:40 PM

Example3: A countdown timer starts at [Off], count down 10 sec then turns [On] for 30sec and repeat.

Configure the discrete I/O to output and data to 0. Set the timer as below:

Timer Setting

Enable Count Down Timer

Event	H / M / S			Date / Time
Off	0	0	10	4:01:00 PM
On	0	0	30	4:01:30 PM
Loop	0	0	0	4:01:35 PM
Stop	0	0	0	4:01:40 PM

24-hour day timer: Click on the button, the timer will start to execute the first event and cycle through 24-hour daytime. If the time matches the programmed time, then execute the next event. During the last event, if it is set to Loop, the timer will loop back to the first event. If it is set to Stop, the timer will be turned off.

Example1: A 24hour day timer starts at [Off]. Every day at 8:30:00AM, the timer turns [On] and at 9:00:00AM it turns [Off]; at 4:30:00PM the timer turns [On] and 5:00:00PM it turns [Off].

Configure the discrete I/O to output and data to 0. Set the timer as below:

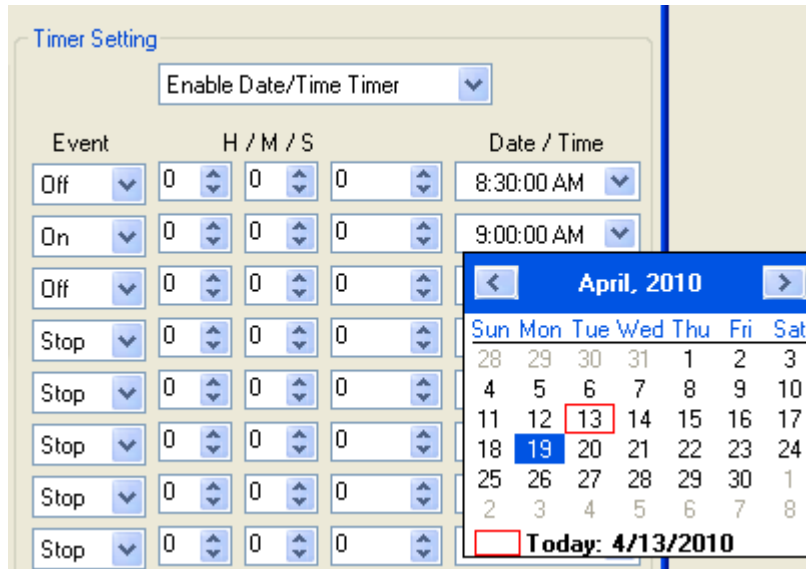
Timer Setting

Enable 24 Hour Day Timer

Event	H / M / S			Date / Time
Off	0	0	0	8:30:00 AM
On	0	0	0	9:00:00 AM
Off	0	0	0	4:30:00 PM
On	0	0	0	5:00:00 PM
Off	0	0	0	6:00:00 PM
Loop	0	0	0	12:00:00 PM

Date/time timer: Click on the button, the timer will start to execute the first event when the date/time matches the programmed date/time. Then the next event will be executed. In last event, needs to be set to stop.

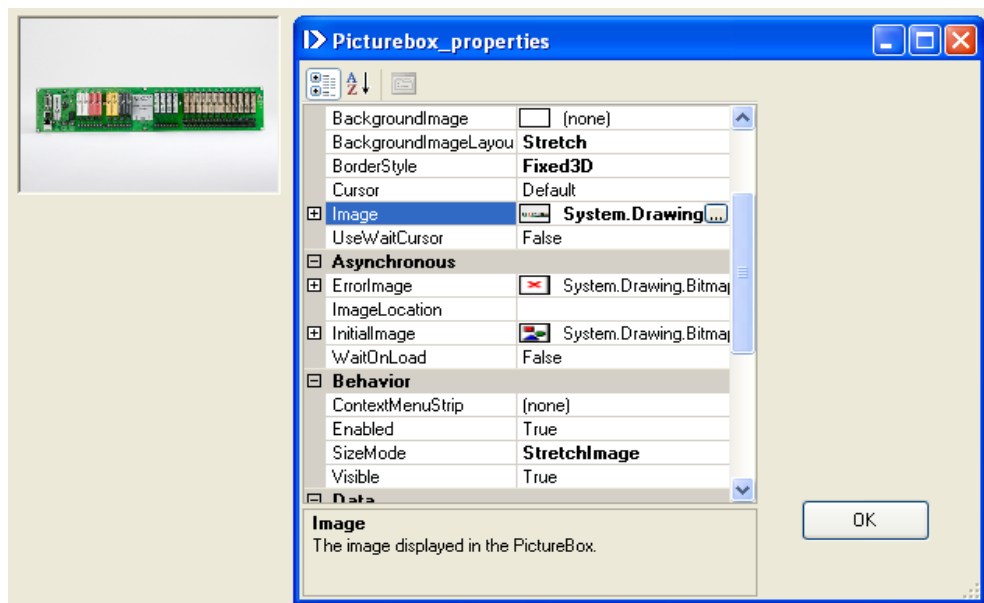
Example1: A date/time timer starts at [Off]. At 8:30:00AM Sunday April 18, 2010, the timer turns [On] and at 9:00:00AM Monday April 19, 2010n it turns [Off].
Configure the discrete I/O to output and data to 0. Set the timer as below:



5.3.2. Picture box

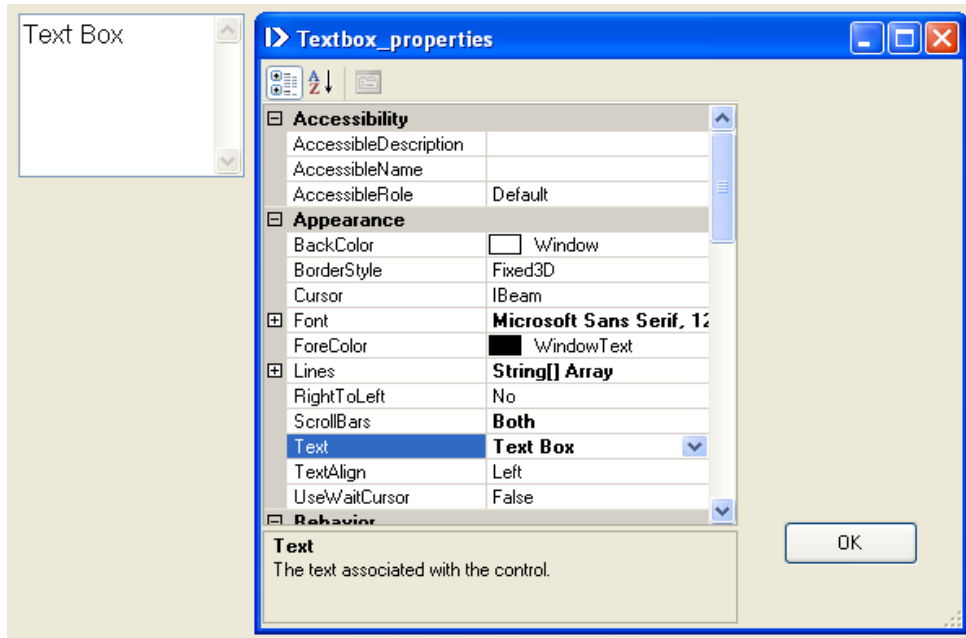
The picture box can load any type of image file. Real pictures of any object or graphs from other graphic software can be loaded.

To open image file or picture use image or background image property.



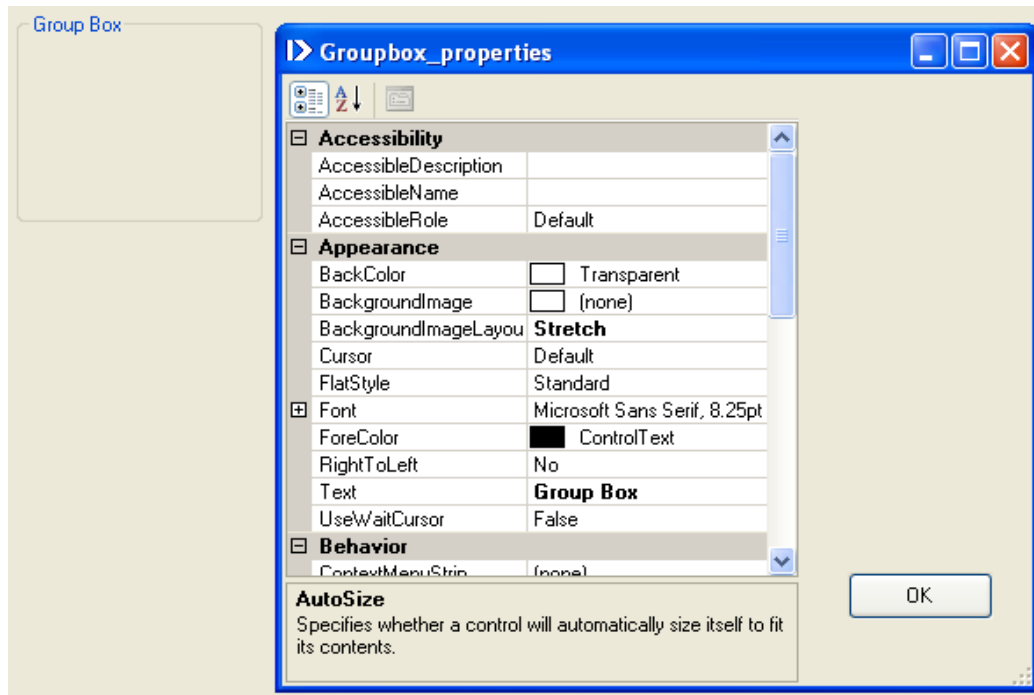
5.3.3. Text box

The text box allows writing of notes or instructions. This text information can be saved into the project file.



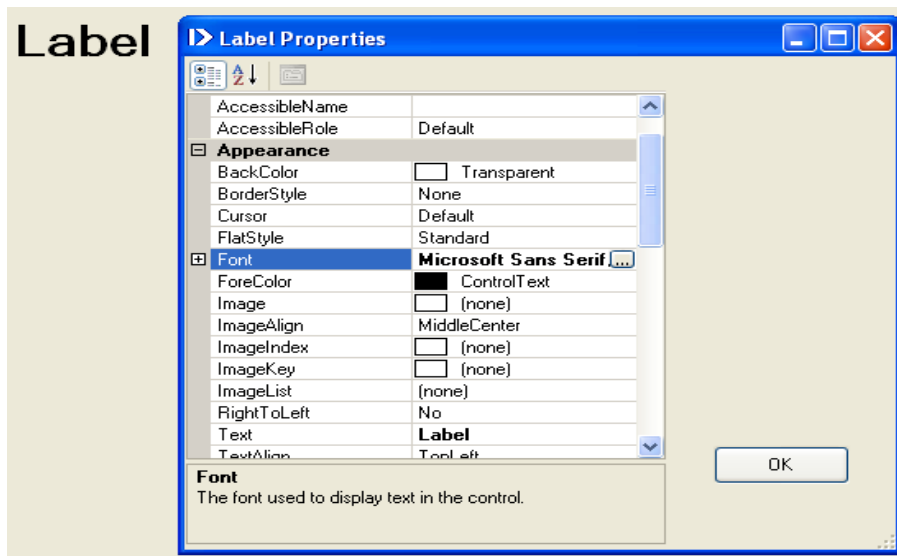
5.3.4. Group box

The only purpose of the group box is for showing a group of controls on the instrument front panel.



5.3.5. Label

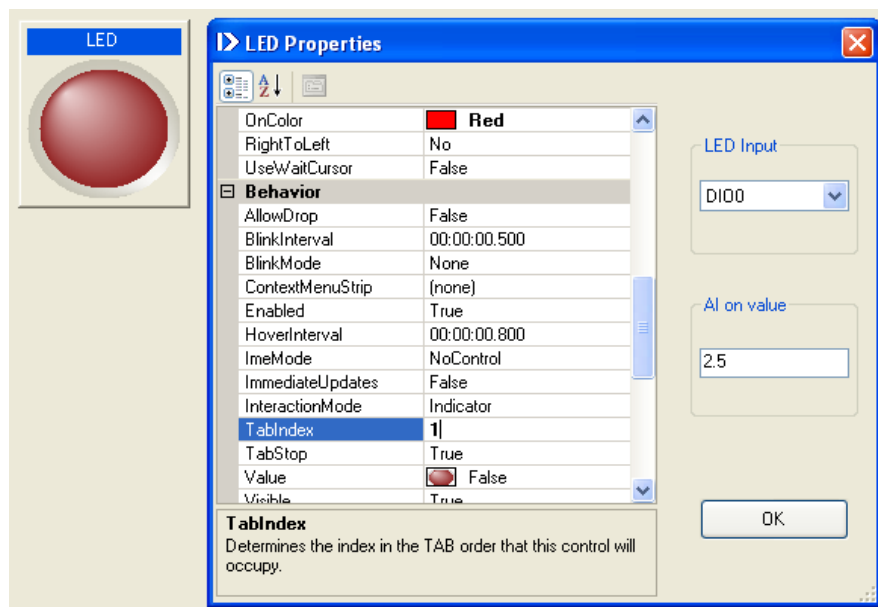
The label control provides a way to write text labels for the front panel.



5.3.6. LED

The LED is an input control that can be turned on or off by I/O, IO0 – IO7, [1 = On, 0 = Off], as well as by analog input AI0 – AI11 [a preset value = On, 0 = Off]. It is possible to connect multiple LED's to the same I/O. For example, connect 3 LEDs to analog input AI0. The on preset values are set to 1V, 2V and 3V. Then the 3 LEDs will turn on at difference voltages, respectively. There are 6 categories in the property window, but only the appearance and layout useful.

- To select the input type channel, click the LED Input select box.
- To preset the value for the analog input threshold, input it to the AI on value box. Default setting is 2.5V.
- To input or select properties, click on the desired property box.



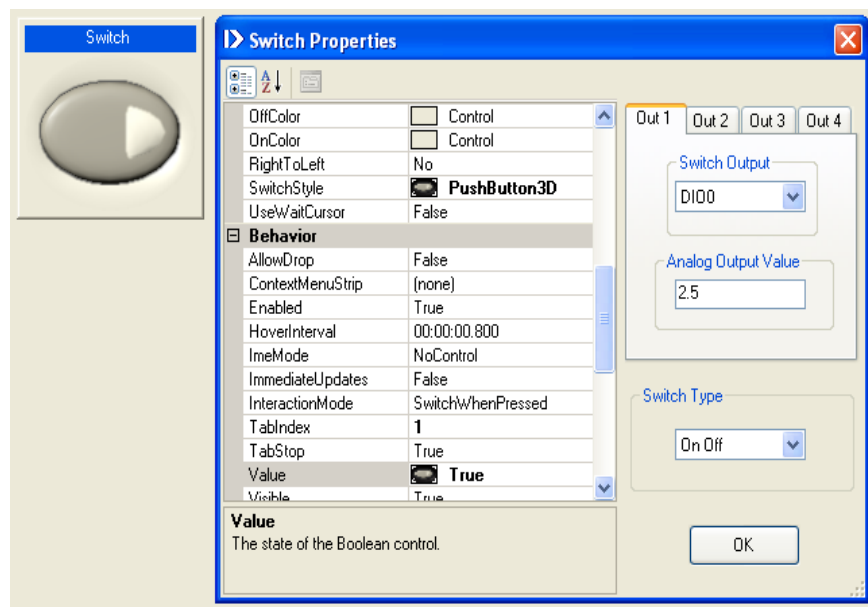
5.3.7. Switch

The switch is a multiple output control that can

- Set discrete output DIO, DIO0 – DIO7, to [1 = On] or [0 = Off],
- Set analog output, AO0 – AO3, to [a preset value = On] or [0 = Off].

The switch can also choose the output type [On / Off], [On only], and [Off only]. For example, if using one switch as an On switch and another one as an Off switch, set one as On only type and another one as Off only and connect them to the same I/O channel. There are 6 categories on the property window, but only the appearance and layout are useful.

- To select the output function, click the Switch Output select box. Default Out1 is set to DIO0 and Out2-3 is set to close.
- To select the switch type, click the Switch Type select box.
- To preset the value for the analog output, input to the Analog Output Value box. Default setting is 2.5 V.
- To input or select properties, click on the desired property box.

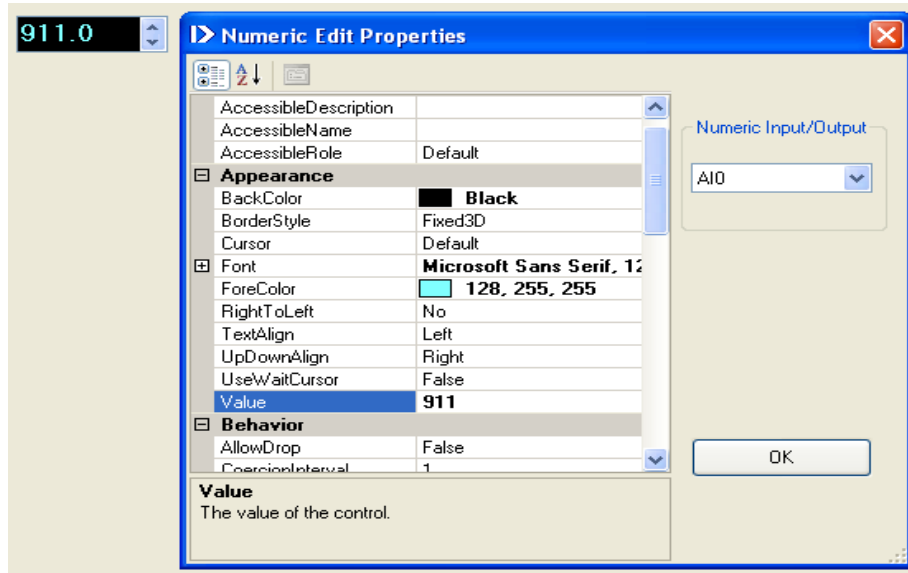


5.3.8. Numeric Edit

Numeric edit is both an input and an output control such that when an analog input, AO0 – AO11, is selected; it becomes an input control that displays the analog channel reading. When an analog output, AO0 – AO3, is selected, it becomes an output control. Any data input to numeric edit will be output to the analog output AO channel. When timer1 or timer2 of Frequency, Pulse, Event, Duty cycle, Period, Low time, width, Average, Maximum, Minimum is selected, it connected to DIO special function of input or output for Frequency, Pulse, Event, Duty cycle, Period, Low time, width, Average, Maximum, Minimum.

There are 6 categories in the property window, but only the appearance, layout, and behavior are useful. The important property is the format mode that sets the display format to binary, engineering, generic, hexadecimal, scientific, and simple double.

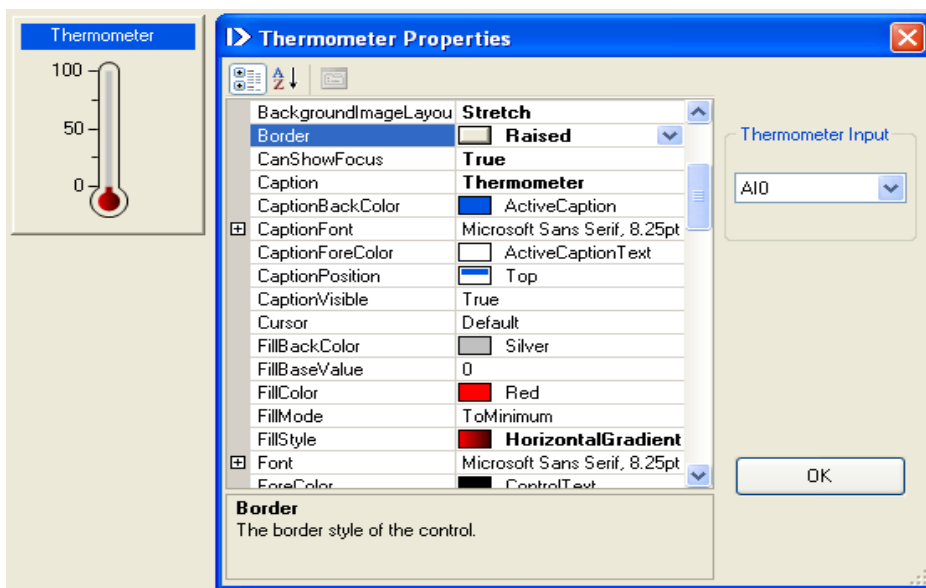
- To select the input/output function, click the input/output select box.
- To input or select the property, click on the property box.



5.3.9. Thermometer

The thermometer is an input control only. It can input signals from any of the 12 analog input channels, AIO - AI11, of SLX300. There are 7 categories in the property window, but only the appearance, scale, behavior, and layout are useful.

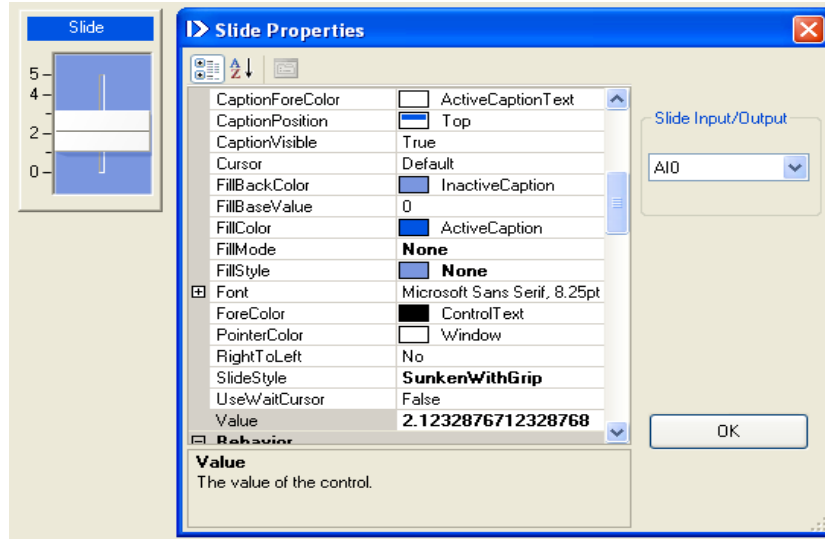
- To select the input channel, click the input select box.
- To input or select properties, click on the desired property box.



5.3.10. Slide

Slide is both an input and output control. When an analog input, AO0 – AO11, is selected, it becomes an input control that displays the analog input channel reading. When an analog output, AO0 – AO3, is selected, it becomes an output control that outputs data to the analog output channel. There are 7 categories on the property window, but only the appearance, scale, layout, and behavior are useful.

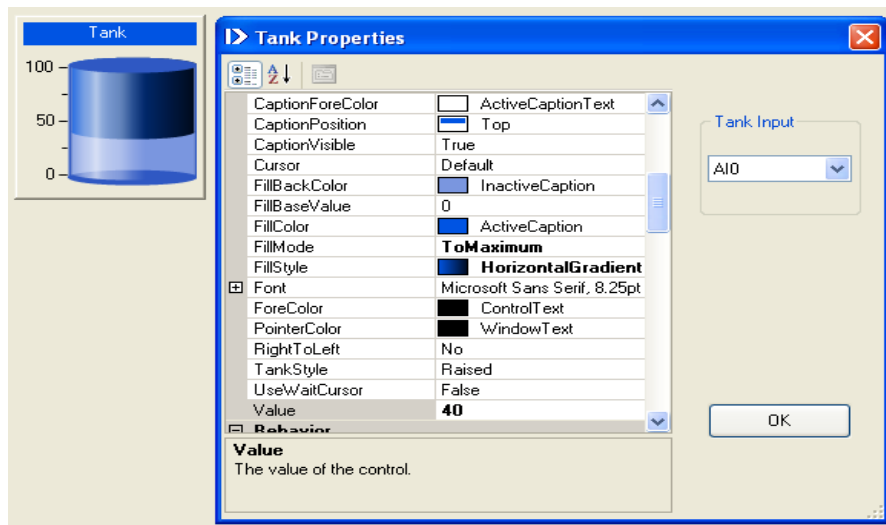
- To select the input/output function, click the input/output select box.
- To input or select properties, click on the desired property box.



5.3.11. Tank

Tank is an input control only. It can input signals from any of the 12 analog input channels, AI0 - AI11, of SLX300. There are 7 categories in the property window, but only the appearance, scale, behavior, and layout are useful.

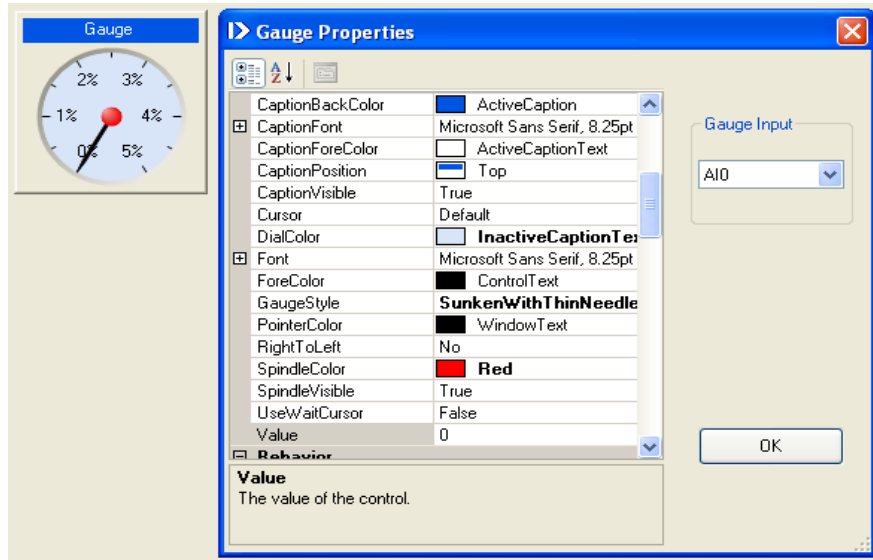
- To select the input channel, click the input select box.
- To input or select properties, click on the desired property box.



5.3.12. Gauge

Gauge is an input control only. It can input signals from any of the 12 analog input channels, AI0 - AI11, of SLX300. There are 7 categories on the property window, but only the appearance, scale, behavior, and layout are useful.

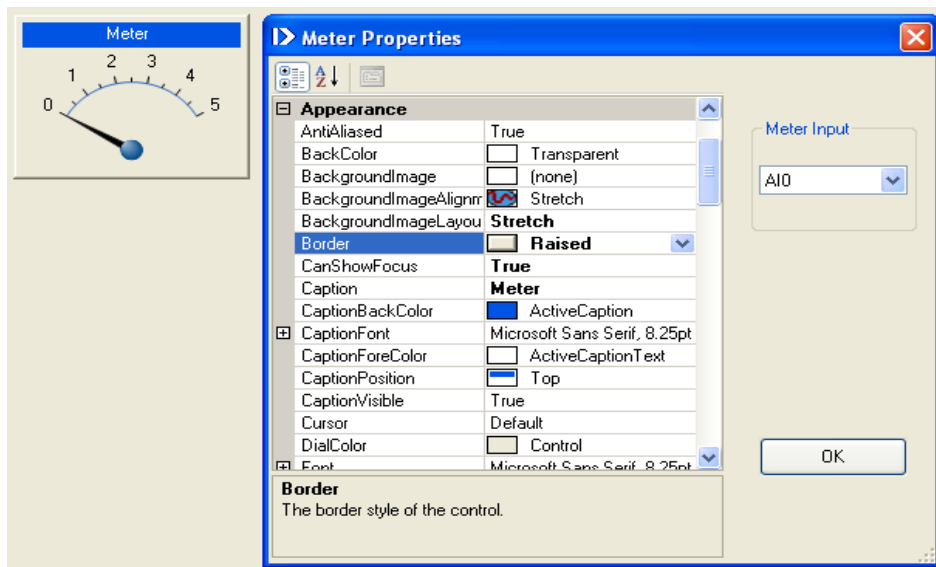
- To select the input channel, click the input select box.
- To input or select properties, click on the desired property box.



5.3.13. Meter

Meter is an input control only. It can input signals from any of the 12 analog input channels, AI0 - AI11, of SLX300. There are 7 categories in the property window, but only the appearance, scale, behavior, and layout are useful.

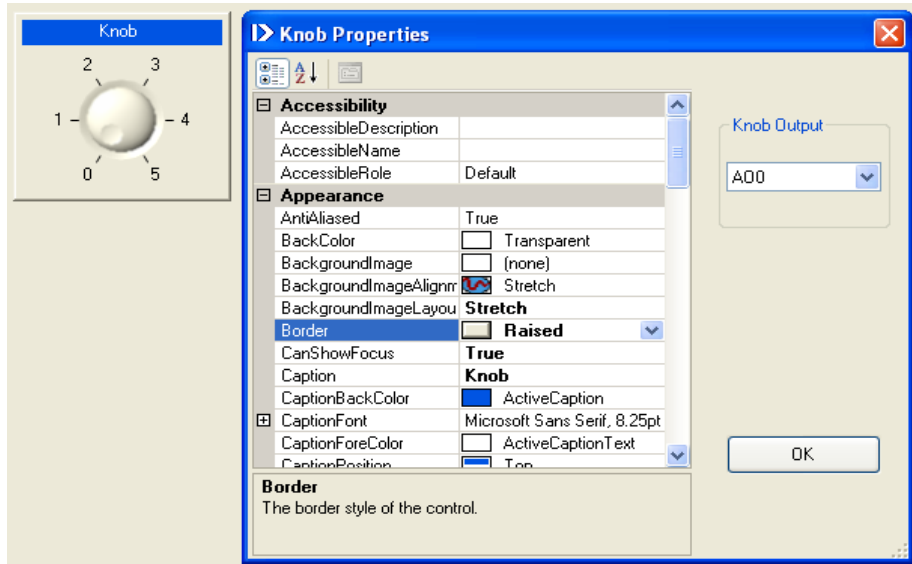
- To select the input channel, click the input select box.
- To input or select properties, click on the desired property box.



5.3.14. Knob

Knob is an output control only. It can output to any of the 4 analog output channels, AO0 – AO3, of SLX300. There are 7 categories in the property window, but only the appearance, scale, behavior, and layout are useful.

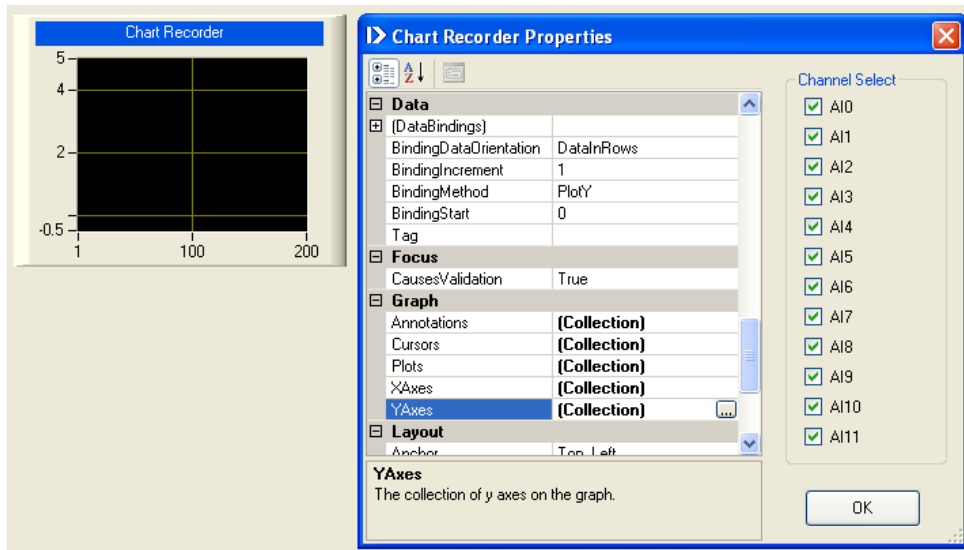
- To select the output channel, click the output select box.
- To input or select properties, click on the desired property box.



5.3.15. Chart recorder

Chart recorder is an input control that can input 12 analog channels, AI0 – AI11, at the same time. There are 7 categories in the property window, but only the appearance, graph, behavior, and layout are useful.

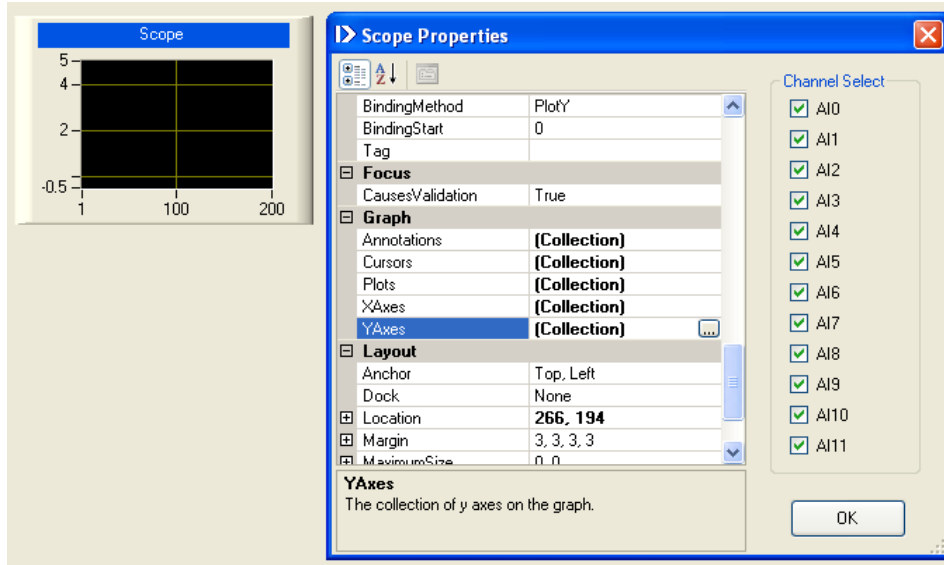
- To select the input channel, click the input check box.
- To input or select properties, click on the desired property box.



5.3.16. Scope

Scope is an input control that can input 12 analog channels, AI0 – AI11, at the same time. There are 7 categories in the property window, but only the appearance, graph, behavior, and layout are useful.

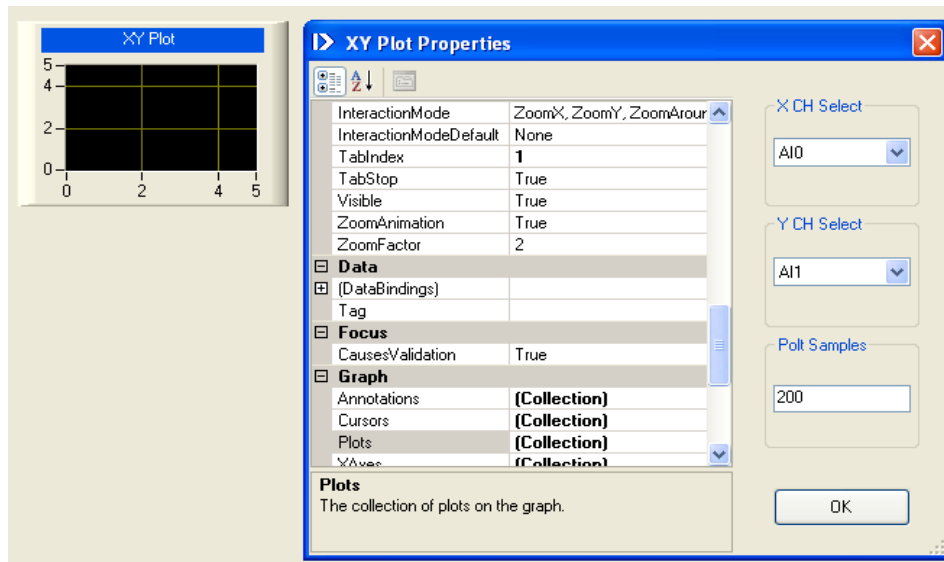
- To select the input channel, click the input check box.
- To input or select properties, click on the desired property box.



5.3.17. XY plot

XY plot is an input control that can select any of 12 analog input channels, AI0 – AI11, for X axis and Y axis. It can also select the plot samples for each plot. There are 7 categories in the property window, but only the appearance, graph, behavior, and layout are useful.

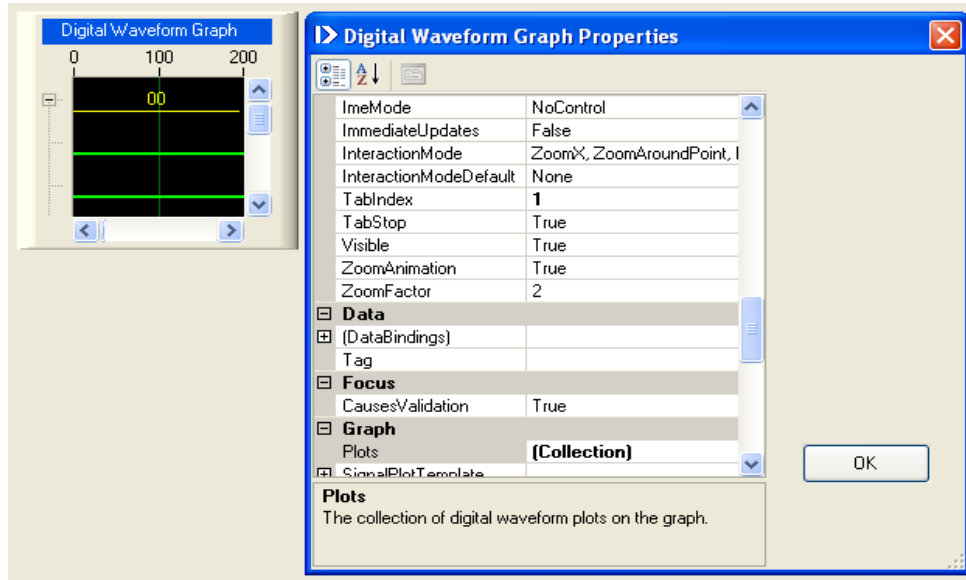
- To select the input channel for X and Y axis, click the X and Y, CH select boxes.
- To input or select properties, click on the desired property box.



5.3.18. Discrete waveform graph

Discrete waveform control displays the 8 channel discrete I/O, DIO0 – DIO7, of SLX300. The X axis is for the number of samples and the Y axis is for the states of 0 or 1 for 8 channels of discrete I/O data. There are 8 categories in the property window but only the appearance, graph, scrollbars, and layout are useful.

- To input or select a property, click on the property box.



6. QUICK START EXAMPLES

6.1. CLOSED LOOP CONTROL

This closed loop control example demonstrates a “bang-bang” temperature controller. It sets the temperature to 75C° and dead band to 2C°. The controller turns on the heater when it first starts. When the temperature reaches 75C°, the heater will turn off. Once the temperature cools down to 73C°, the heater will turn on again. It does the “bang-bang” control between 75 and 73C°.

Step 1: Use the analog channel 0 (AI0) and 8B47J-01 (J type Linear Thermocouple Input Module) to monitor the temperature. Set the Cold Junction Compensation (AIO) control box to 8B47J-01.

Input Channel Name	User Tag Name	Data Display	Unit	Select	Avg Weight	Max/Min	Cold Junction Compensation	Control Loop / Alarm Output
Analog Input 0	AI0	0	C	Current	4	Reset	8B47J-01	C None
Analog Input 1	AI1	0	V	Current	4	Reset	None	C None
Analog Input 2	AI2	0	V	Current	4	Reset	None	C None

The Shape will automatically set up the scale for 8B47J-01 (J type Linear Thermocouple Input Module):

Data Name	User Tag Name	Full Scale	Scale To	Offset	Unit
Analog Input 0	AI0	0 - 4095 Count	0 760	0	V
Analog Input 1	AI1	0 - 4095 Count	0 5	0	V
Analog Input 2	AI2	0 - 4095 Count	0 5	0	V

Step 2: Set the Control Loop or Alarm Output to Tracking H (tracking mode and high alarm).

Input Channel Name	User Tag Name	Data Display	Unit	Select	Avg Weight	Max/Min	Cold Junction Compensation	Control Loop / Alarm Output
Analog Input 0	AI0	0	C	Current	4	Reset	8B47J-01	C Tracking H
Analog Input 1	AI1	0	V	Current	4	Reset	None	C None
Analog Input 2	AI2	0	V				None	C None
Analog Input 3	AI3	0	V				None	C None
Analog Input 4	AI4	0	V				None	C None
Analog Input 5	AI5	0	V				None	C None
Analog Input 6	AI6	0	V				None	C None

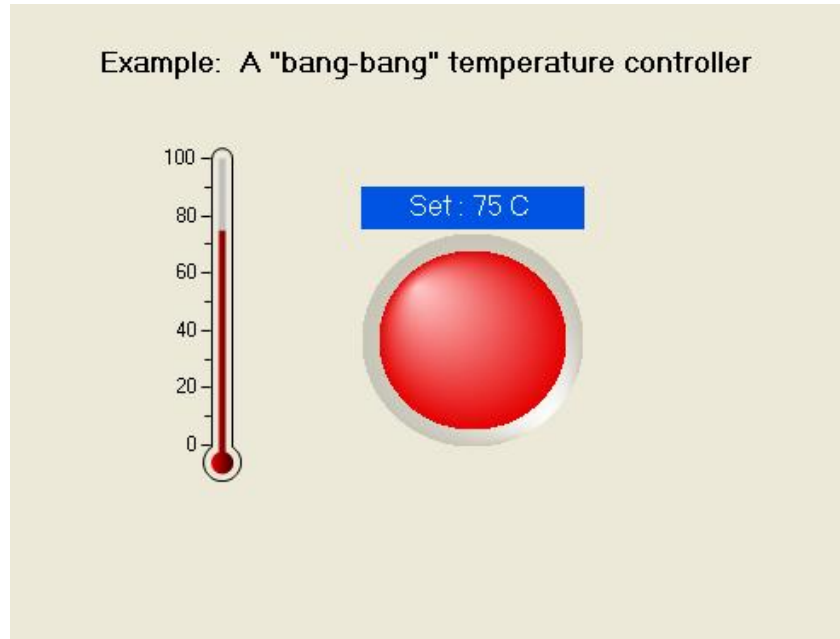
The Shape will automatically jump to the control loop/Alarm Output tab to set up the output limit parameters.

Step 3: Set up the Control Loop or Alarm Output's AI0 (Config=ActiveL, Output to = DIO0, High Limit=75 H-Deadband = 2) as shown below:

User Tag Name	Config	Output To Channel		High Limit	Low Limit	H-H Limit	L-L Limit	High Deadband	Low Deadband	H-H Deadband	L-L Deadband
		High-Low	Config								
AI0	Active L	DIO0	Active H	75	0	5	0	2	0	0	0
AI1	Active H	A03	Active H	5	0	5	0	0	0	0	0

Step 4: In Present panel:

- Create a thermometer control to monitor the temperature. Set the Range to 0-100C (input from AIO).
- Create a LED control to monitor the DIO0 output. Input the caption as "Set: 75C".
- Create a label control. Input text as "Example: A "bang-bang" temperature controller".



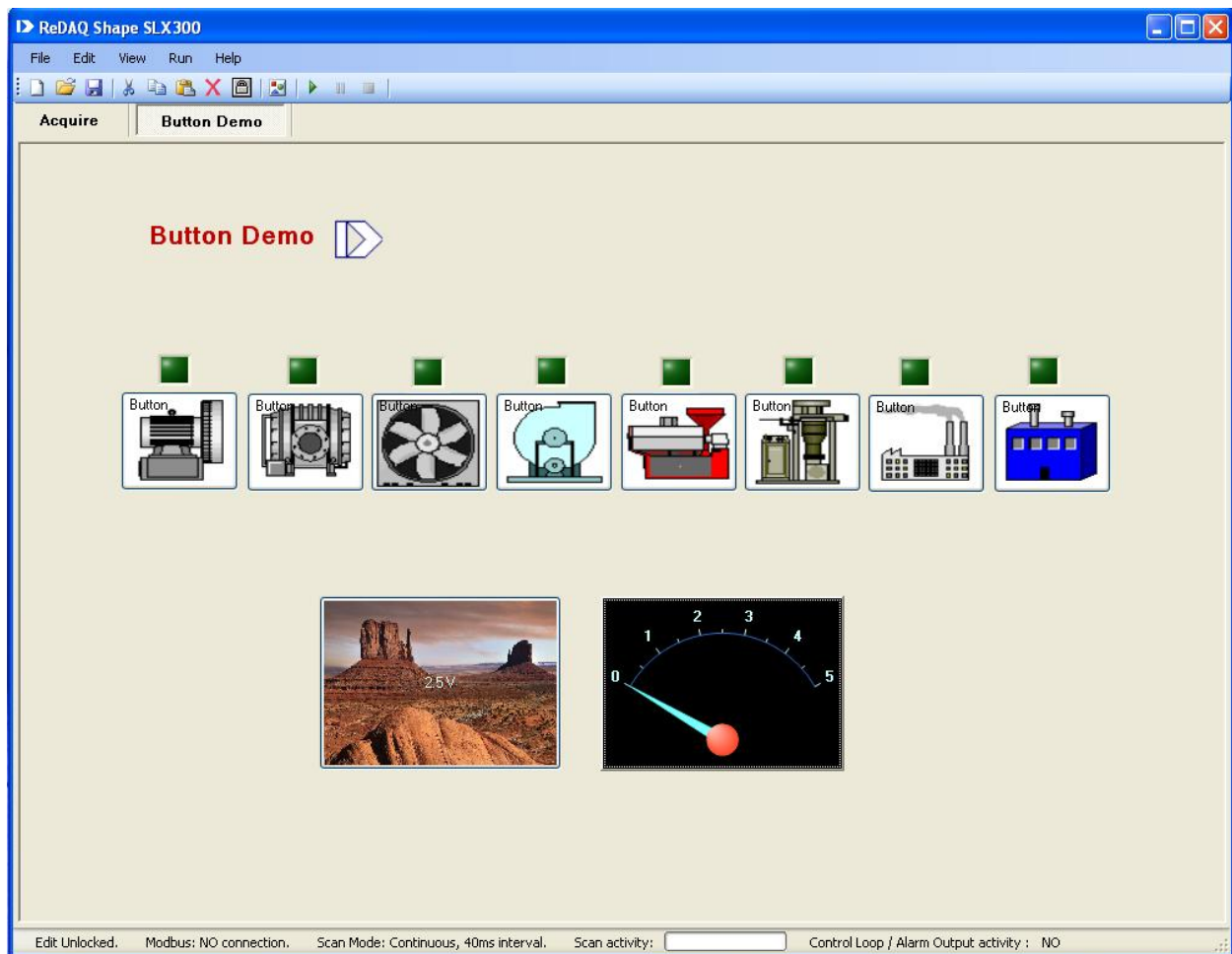
Step 5: Set up the Acquire panel parameter to match the current hardware (Slave ID, TCP/IP or Serial, IP address, Port Name, Baud Rate and Parity). Set scan mode to continuous scan mode. Connect the temperature sensor and control hardware, and then Start to run.

6.2. DEMO PROJECT

Shape is shipped with 8 demo projects which are very good examples for how to use controls. This demo is located in the Shape file folder. To run it, open the project, set up the data Acquire panel Modbus parameters to match the current SLX300 hardware board (Slave ID, TCP/IP or Serial, IP address, Port Name, Baud Rate and Parity), Set scan mode to continuous scan mode, and then Start.

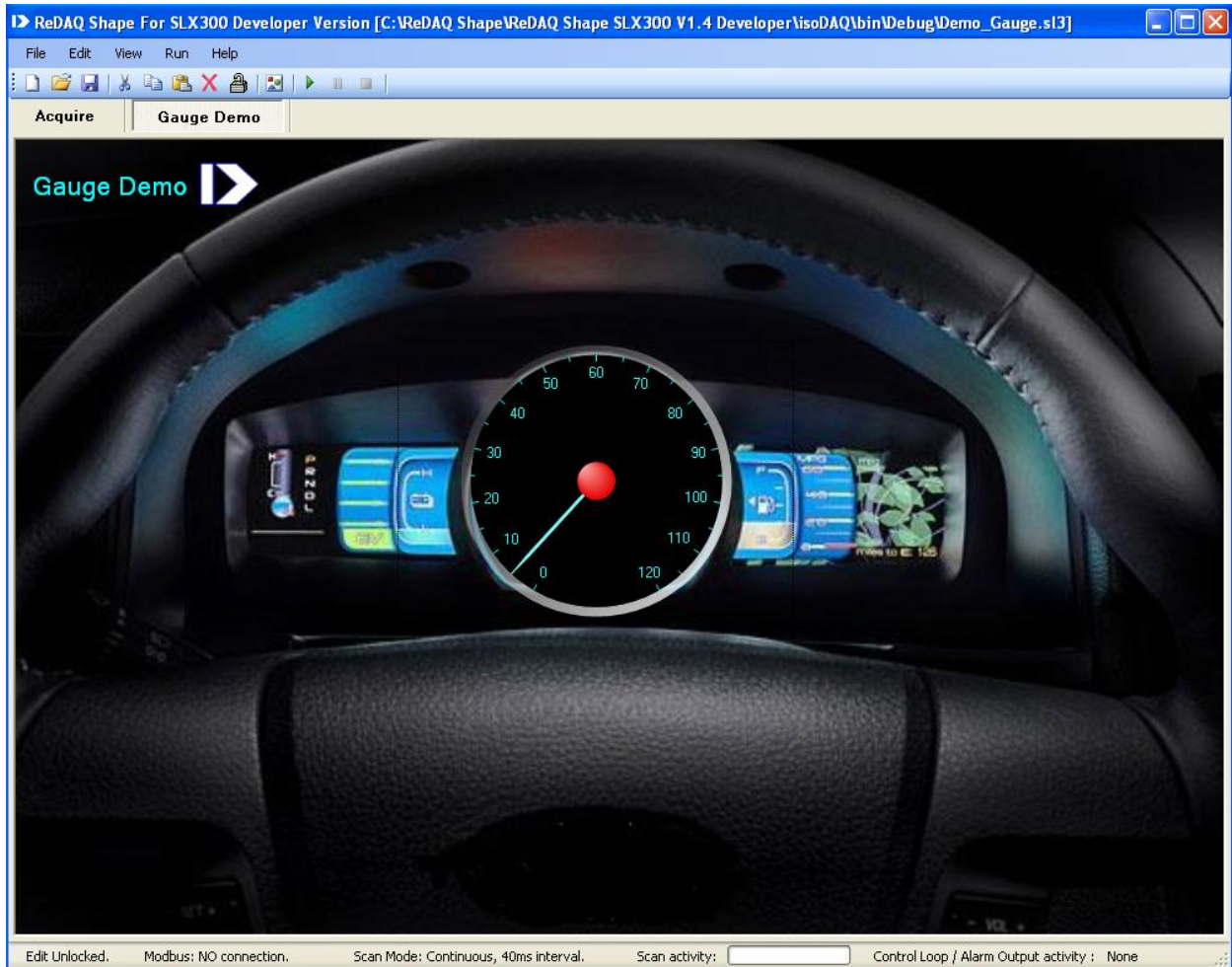
The 8 demo projects are listed below:

1. Demo_Button: Example of how to use button control.
 - 8 buttons connect to DIO0 to DIO7. The I/O is set to output. The I/O will turn on/off by clicking on the button.
 - Each of 8 LEDs monitors each output.
 - One button connects to AO0 and the value is set to 2.5V.
 - One Meter monitors the AI0 input and need to connect to AO0.



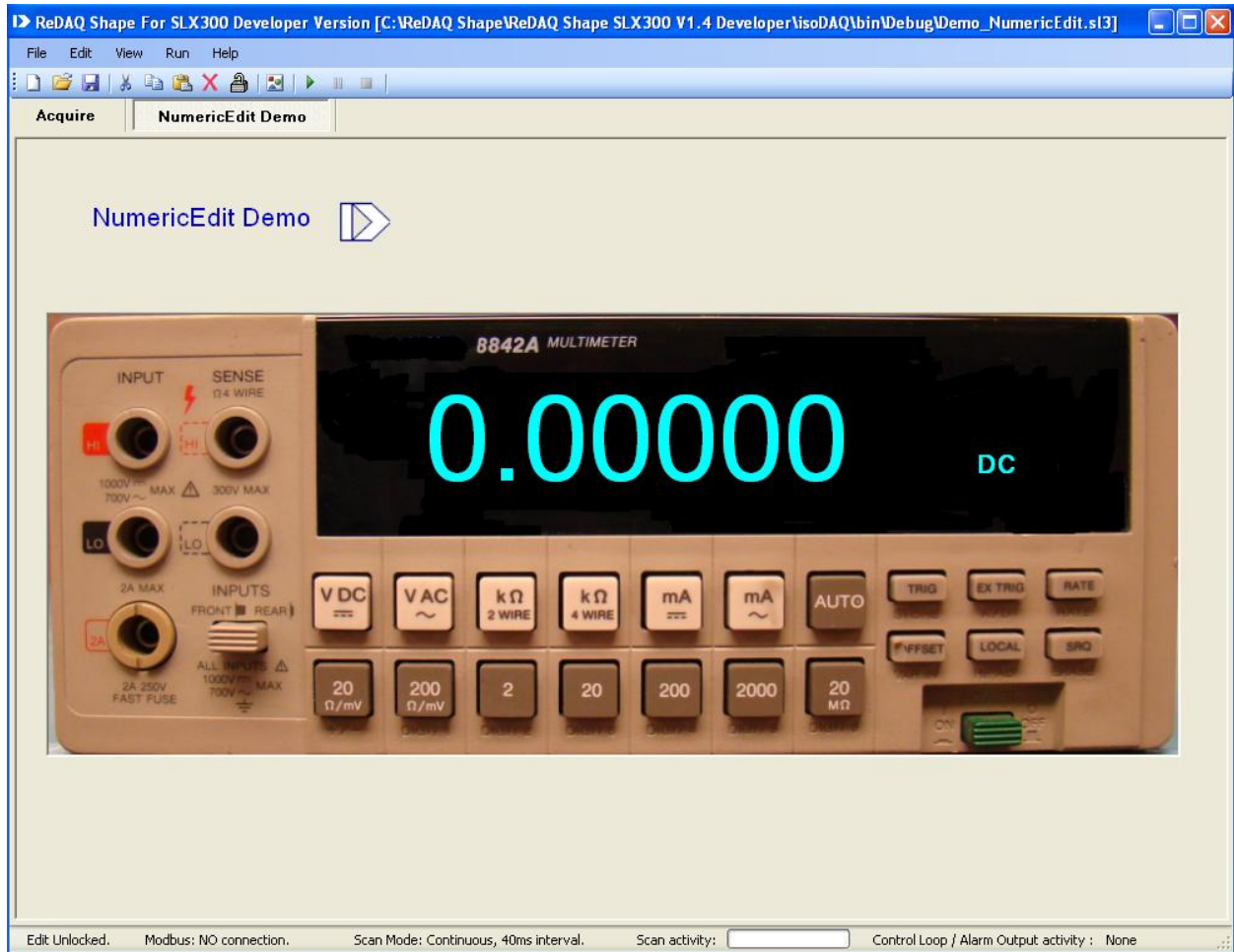
2. Demo_Gauge: Example of how to use gauge control.

- One gauge connects to analog input channel 0 (AI0).
- Set the scale of ADC0 and gauge to 0 – 120.
- To run the demo, apply a voltage 0-5V to the input of AI0.



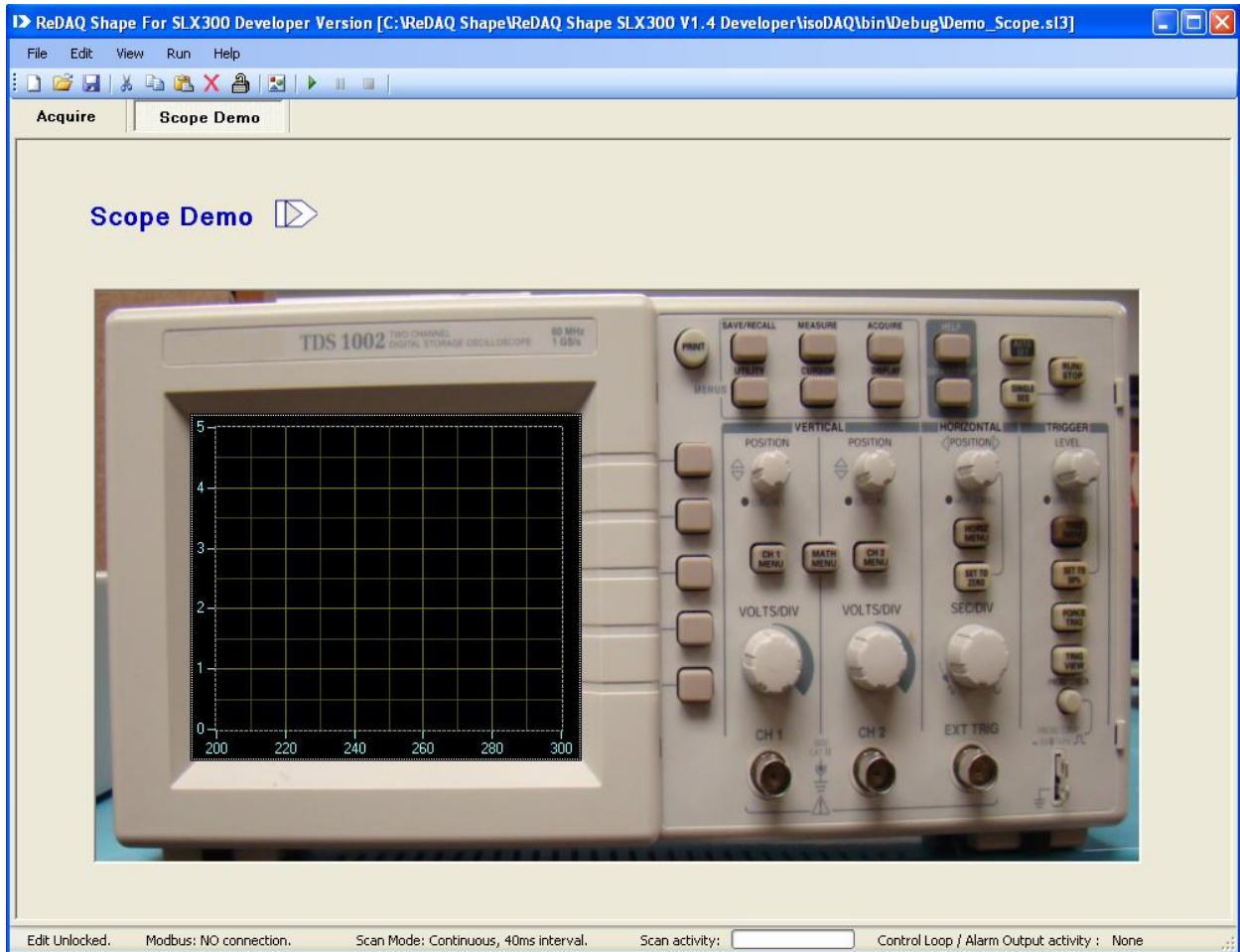
3. Demo_NumericEdit: Example of how to use NumericEdit control.

- One Numeric Edit connects to analog input channel 0 (AI0).
- To run the demo, apply a voltage 0-5V to input of ADC0.



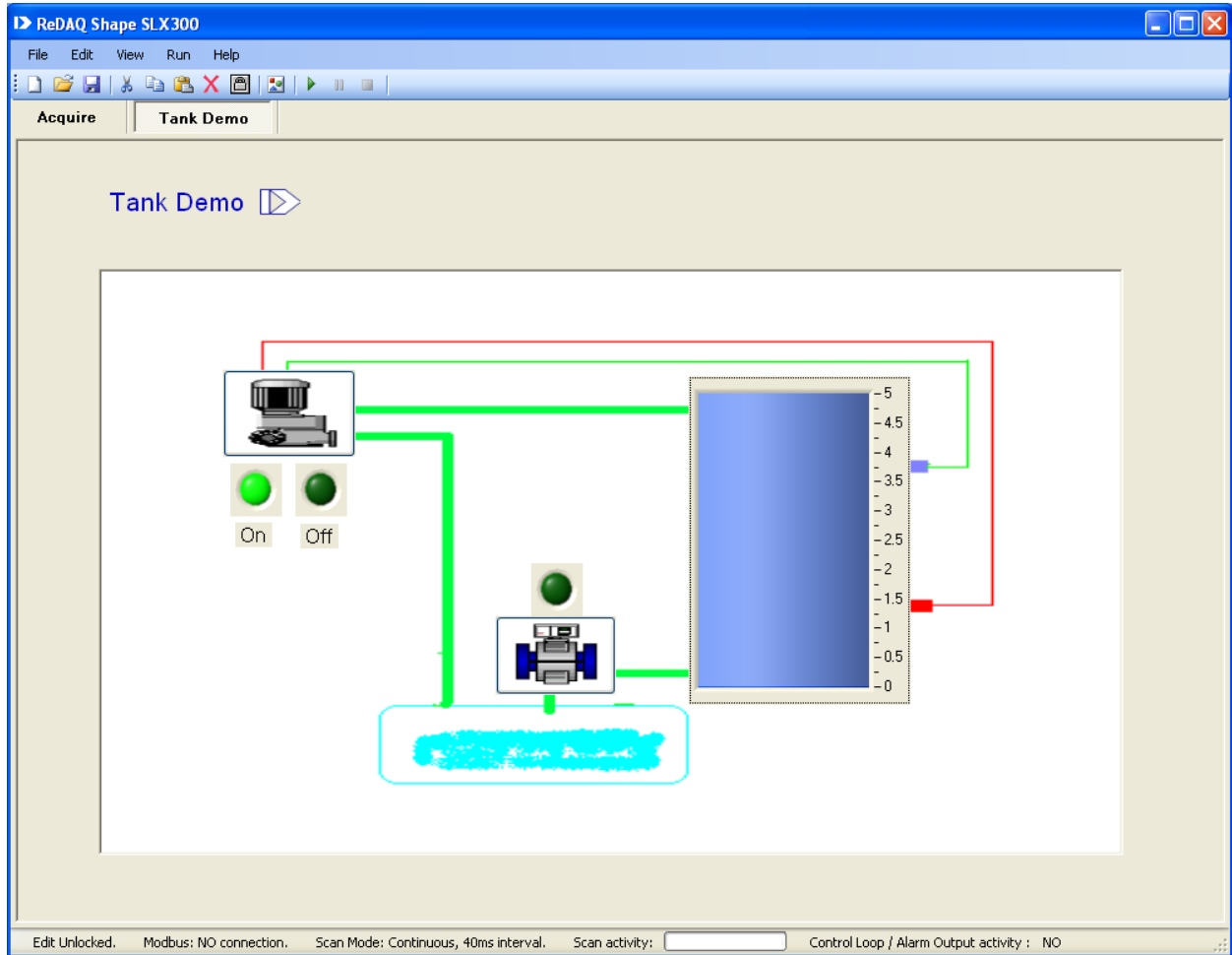
4. Demo_Scope: Example of how to use scope control.

- One scope is set scale X to 0-100 and Y to 0-5.
- Select the analog input channel 0 and 1 (AI0 and AI1).
- The analog output configures to buffer mode. AO0 output is sine waveform signal and AO1 output is cosine waveform signal.
- To run the demo, connect the analog output of AO0 and AO1 to the analog input of AI0 and AI1.



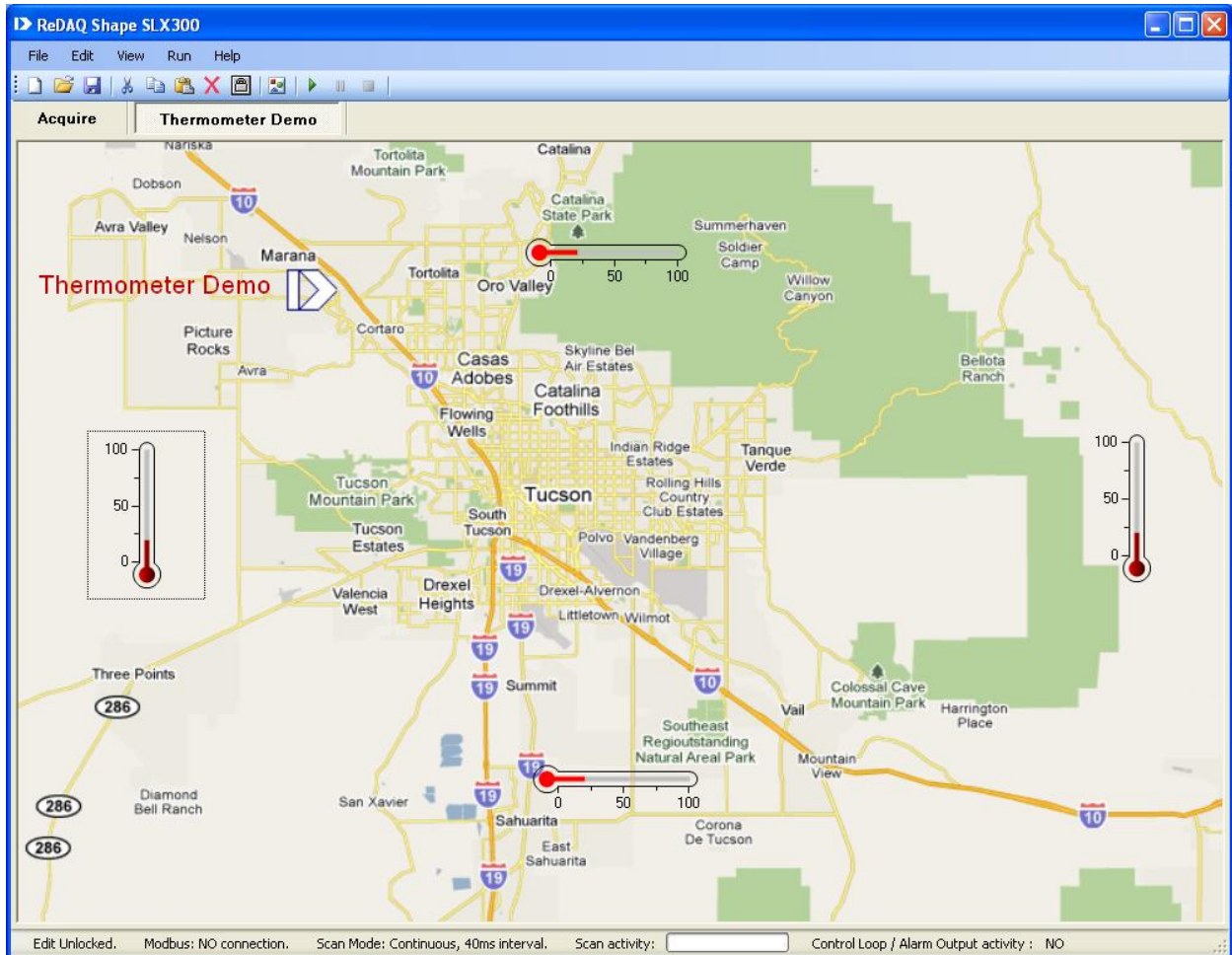
5. Demo_Tank: Example of how to use tank control and control loop.

- The demo is a closed loop control to fill a tank.
- Use AI0 and AI1 to connect the low and high sensors.
- Set the [Control Loop / Alarm Output] to DIO0, active high, the low limit to 1.45V and high limit to 3.75 for AI0 and AI1.
- 2 LEDs monitor the DIO.
- A picture box control displays the plant schematic drawing created by Paint program.
- To run the demo, apply a voltage 0-5V to the input of AI0 and AI1.



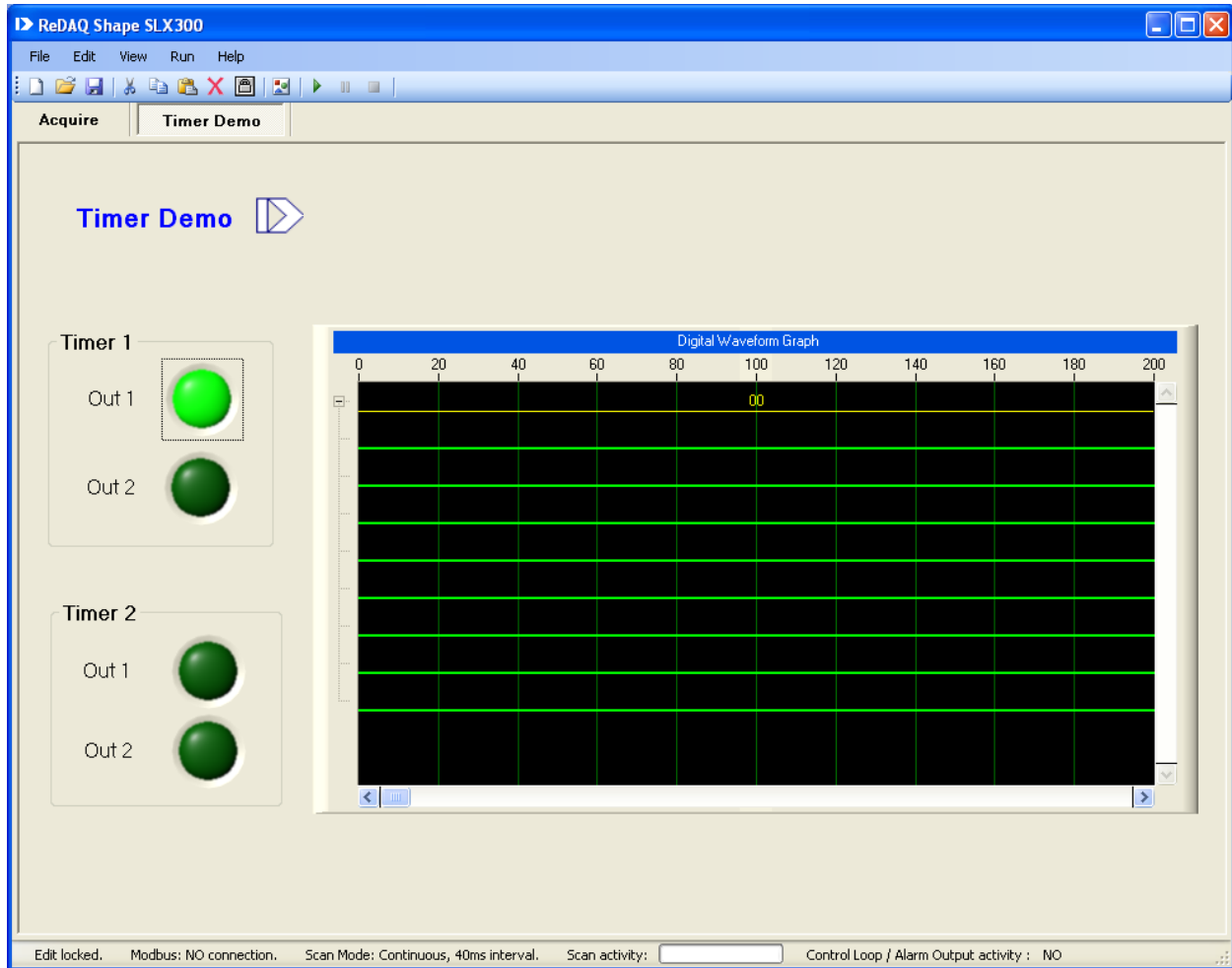
6. Demo_Thermometer: Example of how to use thermometer control.

- 4 thermometers are on the top of Tucson map and connected to analog channel 0 (AI0).
- Set ADC0 scale to 0-100.
- To run the demo, apply a voltage 0-5V to the input of AI0 or connect a real temperature sensor.



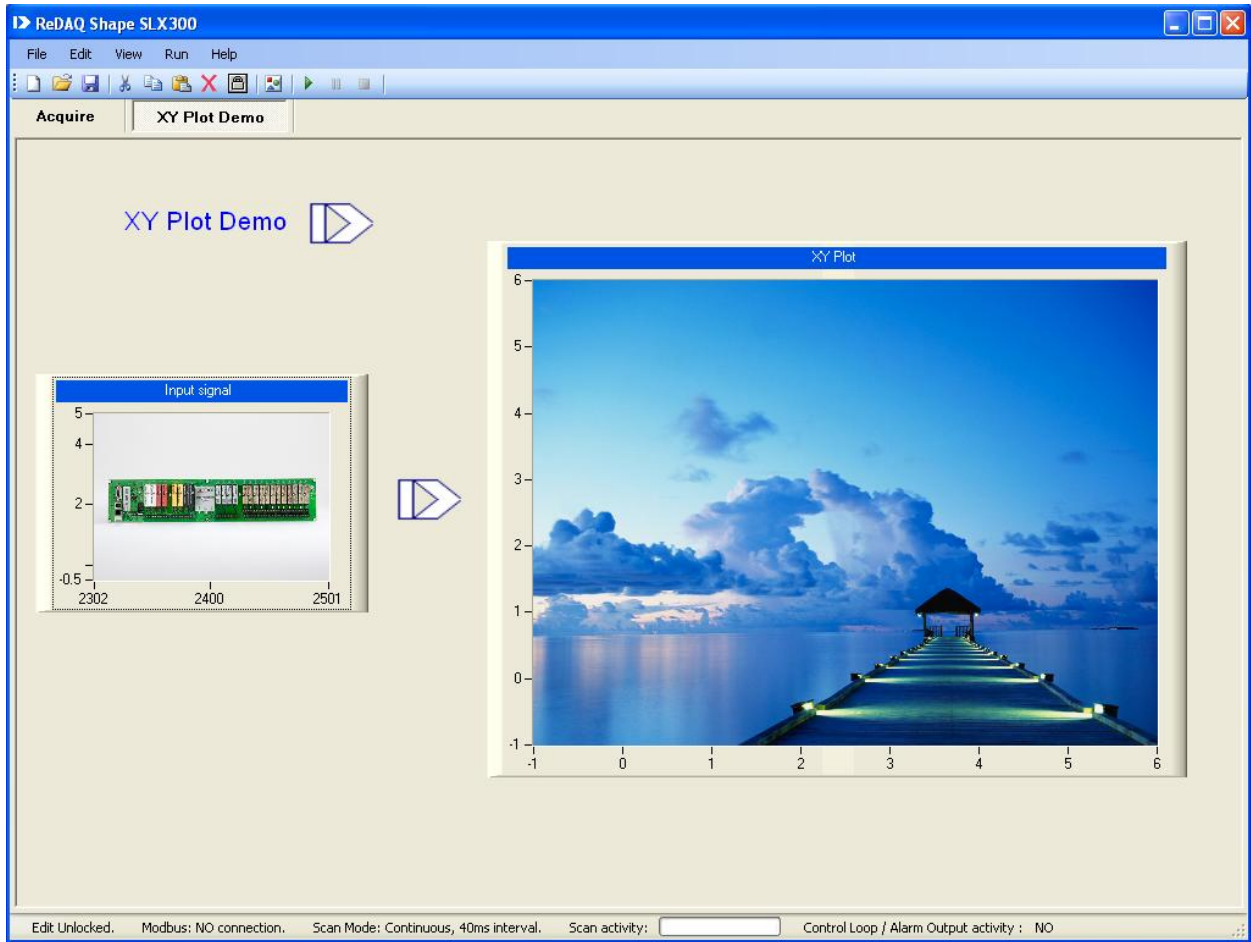
7. Demo_Timer: Example of how to use discrete I/O special timer function.

- Select discrete I/O special timer function. Timer1 and Timer2 are set to PWM generation.
- Timer1 is output to DIO2-3 and Timer2 to DIO 6-7.
- 4 LEDs monitor the I/O: DIO1-2 for Timer1 and DIO4-5 for Timer2.
- One discrete waveform graph records I/O data.



8. Demo_xyplot: Example of how to use XY plot control.

- Select analog input channel 0 (AI0) for X and analog input channel 1 (AI1) for Y.
- A Chart Recorder control monitors the input signal.
- The analog output configures to buffer mode. AO0 output is sine waveform signal and AO1 output is cosine waveform signal.
- To run the demo, connect the analog output of AO0 and AO1 to the analog input of AI0 and AI1.



Appendix - Warranty, Disclaimers, Return/Repair Policy

WARRANTY

General. Seller warrants that its products furnished hereunder will, at the time of delivery, be free from defects in material and workmanship and will conform to Seller's applicable specifications or, if appropriate, to Buyer's specifications accepted in writing by Seller. SELLER'S OBLIGATION OR LIABILITY TO BUYER FOR PRODUCTS WHICH DO NOT CONFORM TO THE ABOVE STATED WARRANTY SHALL BE LIMITED TO SELLER, AT SELLER'S SOLE DISCRETION, EITHER REPAIRING, REPLACING, OR REFUNDING THE PURCHASE PRICE OF THE DEFECTIVE PRODUCT(S) PROVIDED THAT WRITTEN NOTICE OF SAID DEFECT IS RECEIVED BY SELLER WITHIN THE TIME PERIODS SET FORTH BELOW:

- i. for all software products including licensed programs, thirty (30) days from date of initial delivery;
- ii. for all hardware products including complete systems, one (1) year from date of initial delivery;
- iii. for all special products, sixty (60) days from date of initial delivery; and

further, all products warranted hereunder for which Seller has received timely notice of nonconformance must be returned FOB Seller's plant within thirty (30) days after the expiration of the warranty periods set forth above.

The foregoing warranties shall not apply to any products which Seller determines have, by Buyer or otherwise, been subjected to operating and/or environmental conditions in excess of the maximum value established therefor in the applicable specifications, or any products that have been the subject of mishandling, misuse, misapplication, neglect, improper testing, repair, alteration or damage.

Limitation. THE PROVISIONS OF THE FOREGOING WARRANTIES EXTEND TO BUYER ONLY AND NOT TO BUYER'S CUSTOMERS OR USERS OF BUYER'S PRODUCTS AND ARE IN LIEU OF ANY OTHER WARRANTY, WHETHER EXPRESS, IMPLIED OR STATUTORY, INCLUDING ANY IMPLIED WARRANTY OF MERCHANTABILITY OR FITNESS FOR A PARTICULAR PURPOSE. IN NO EVENT SHALL SELLER BE LIABLE FOR INCIDENTAL, SPECIAL OR CONSEQUENTIAL DAMAGES. Seller's liability arising out of the production, sale or supply of products or their use or disposition, whether based upon warranty, contract, tort or otherwise, shall not exceed the actual purchase price paid by Buyer for Seller's products. Seller's liability for any claim of any kind shall in no case exceed the obligation or liability specified in this Warranty.

Technical Assistance. Seller's Warranty as hereinabove set forth shall not be enlarged, diminished or affected by, and no obligation or liability shall arise or grow out of, Seller's rendering of technical advice, facilities or service in connection with Buyer's order of the goods furnished hereunder.

Warranty Procedures. Buyer shall notify Seller of any products which it believes to be defective during the applicable warranty period and which are covered by the warranty set forth above. Buyer shall not return any products for any reason without the prior authorization of Seller and issuance of a Return Material Authorization number. After issuance of an RMA number, such products shall be promptly returned by Buyer (and in no event later than thirty (30) days after the warranty expiration date), transportation and insurance prepaid, to the Seller's designated facility for examination and testing. Seller shall either repair or replace any such products found to be so defective and promptly return such products to Buyer, transportation and insurance prepaid. Should Seller's examination and testing not disclose any defect covered by the foregoing warranty, Seller shall so advise Buyer and dispose of or return the products in accordance with Buyer's instructions and at Buyer's sole expense, and Buyer shall reimburse Seller for testing expenses incurred at Seller's then current repair rates.

Repair Warranty. Seller warrants its repair work and/or replacement parts for a period of ninety (90) days from receipt by Buyer of the repaired or replaced products or for the remainder of the warranty period for the initial delivery of such order as set forth above in paragraph a, whichever is greater.

Critical Applications. Certain applications using Seller's products may involve potential risks of death, personal injury, or severe property or environmental damage ("Critical Applications"). SELLER'S PRODUCTS ARE NOT DESIGNED, INTENDED, AUTHORIZED, OR WARRANTED TO BE SUITABLE FOR USE IN LIFE-SUPPORT DEVICES OR SYSTEMS, SAFETY EQUIPMENT, NUCLEAR FACILITY APPLICATIONS OR OTHER CRITICAL APPLICATIONS WHERE MALFUNCTION OF THE PRODUCT CAN BE EXPECTED TO RESULT IN PERSONAL INJURY, DEATH OR SEVERE PROPERTY DAMAGE. BUYER USES OR SELLS SUCH PRODUCTS FOR USE IN SUCH CRITICAL APPLICATIONS AT BUYER'S OWN RISK AND AGREES TO DEFEND, INDEMNIFY AND HOLD HARMLESS SELLER FROM ANY AND ALL DAMAGES, CLAIMS, SUITS OR EXPENSE RESULTING FROM SUCH USE.

Static Sensitive. Seller ships all product in anti-static packages. Seller's Warranty as hereinabove set forth shall not cover warranty repair, replacement, or refund on product or devices damaged by static due to Buyer's failure to properly ground.

Return/Repair Policy

All warranty and repair requests should be directed to the Dataforth Customer Service Department at (520) 741-1404. If a product return is required, request a Return Material Authorization (RMA) number. You should be ready to provide the following information:

1. Complete product model number.
2. Product serial number.
3. Name, address, and telephone number of person returning product.
4. Special repair instructions.
5. Purchase order number for out-of-warranty repairs.

The product should be carefully packaged, making sure the RMA number appears on the outside of the package, and ship prepaid to:

Dataforth Corporation

3331 E. Hemisphere Loop
Tucson, AZ 85706 USA

The information provided herein is believed to be reliable; however, DATAFORTH assumes no responsibility for inaccuracies or omissions. DATAFORTH assumes no responsibility for the use of this information, and all use of such information shall be entirely at the user's own risk. Application information is intended as suggestions for possible use of the products and not as explicit performance in a specific application. Prices and specifications are subject to change without notice. No patent rights or licenses to any of the circuits described herein are implied or granted to any third party. DATAFORTH does not authorize or warrant any DATAFORTH product for use in life support devices and/or systems.