



Video Storage Solutions

HD Commander

Installation and User's Manual

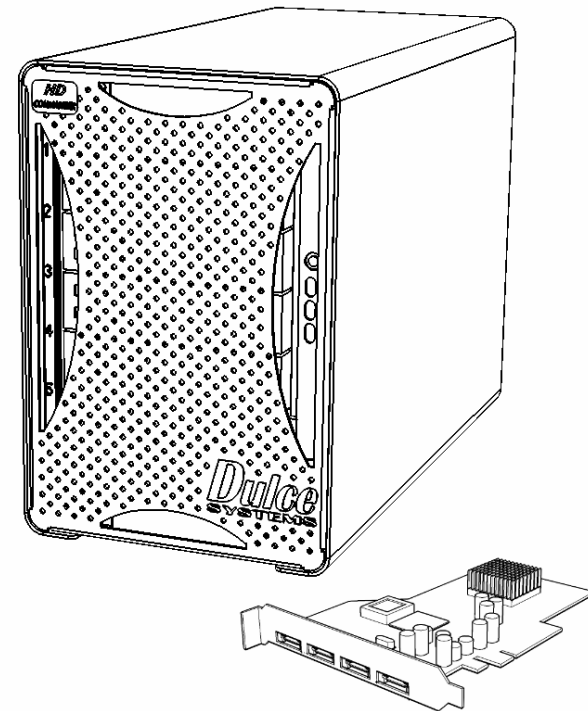


Table of Content

- 1. Introduction 3
 - 1.1. Safety Considerations 4
 - 1.1.1. SAFETY CONSIDERATIONS..... 4
 - 1.1.2. CONSIDÉRATIONS DE SÉCURITÉ..... 5
 - 1.1.3. SAFTY BERÜCKSICHTIGUNGEN..... 6
 - 1.1.4. CONSIDERACIONES DE SEGURIDAD..... 7
 - 1.2. System Requirements..... 8
 - 1.3. Technical Support 8
- 2. Getting Started 9
 - 2.1. Check List 9
- 3. Overview 10
 - 3.1. Removing the Bezel..... 10
 - 3.2. Disk Modules, Indicators, Controls, Connections..... 10
 - 3.3. PCI-e / PCI-x Host Adapter Port Assignment..... 12
- 4. Installation..... 14
 - 4.1. Disk Module Installation 14
 - 4.2. RAID Controller Installation..... 14
 - 4.3. Host Adapter Installation..... 15
 - 4.3.1. PCI-e Controller Installation 15
 - 4.3.2. PCI-x Controller Installation 15
 - 4.4. Making the Connections 16
 - 4.4.1. Mac Connection..... 17
 - 4.4.2. Windows PC Connection 17
 - 4.5. Driver Installation 18
 - 4.5.1. Mac Pro – Expansion Slot Utility Settings..... 18
 - 4.5.2. Mac Driver Installation 19
 - 4.5.3. Windows Driver Installation..... 19
- 5. Formatting and Partitioning 20
 - 5.1. Apple OS X Formatting 20
 - 5.1.1. Erase an Existing RAID Set and Partition..... 20
 - 5.1.2. Create a New RAID Set..... 22
 - 5.1.3. Change the Icon 22
 - 5.2. Windows XP / Vista Formatting..... 23
- 6. Limited Warranty 26
- 7. Product Registration..... 27

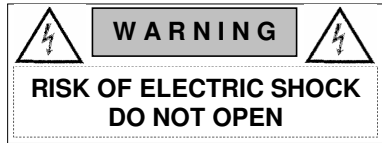
1. Introduction

We appreciate your purchase of the HD Commander product from Dulce Systems. You have everything you need to quickly and easily connect the storage unit to your editing computer. You are a short time way from your next blockbuster creation.

This Installation and User's Manual is intended to streamline the process of getting your storage system up and running so you can get to work quickly.

1.1. Safety Considerations

1.1.1. SAFETY CONSIDERATIONS



WATER AND MOISTURE

To reduce the risk of fire or electrical shock, do not expose unit to rain or moisture. Do not operate unit near water – such as: bathtub, washbowl, kitchen sink or laundry tub, wet basement, or near a swimming pool.

STABILITY

Do not place this unit on an unstable cart, stand, bracket, or table. Unit may fall, causing serious injury.

VENTILATION

Do not block front and rear ventilation. Proper airflow is required to ensure reliable operation and prevents unit from over heating. Do not place unit in an enclosed space where no or insufficient ventilation is available.

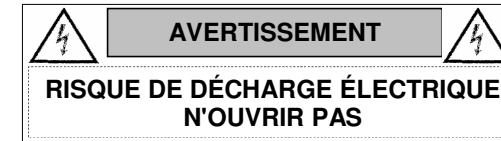
ELECTRICAL

Do not defeat the safety purpose of the grounding power plug. The power cord should be routed so that it is not likely to be walked on or pinched by items placed upon or against them.

SERVICING

Do not attempt to service this unit yourself. Opening or removing the top, side and rear covers will expose you to dangerous voltages or other hazards.

1.1.2. CONSIDÉRATIONS DE SÉCURITÉ



EAU ET HUMIDITÉ

Pour réduire le risque de feu ou de choc électrique, n'exposez pas d'unité pour pleuvoir ou l'humidité. Ne faites pas marcher d'unité près de l'eau – comme; la baignoire, la cuvette, l'évier ou la cuve de blanchisserie, la cave mouillée ou près d'une piscine.

STABILITÉ

Ne placez pas cette unité sur un chariot instable, un éventaire, une parenthèse ou une table. L'unité peut tomber, en provoquant la blessure sérieuse.

VENTILATION

Ne bloquez pas de devant et élevez la ventilation. L'écoulement d'air nécessaire est tenu de garantir l'opération sûre et prévient l'unité de sur le chauffage. L'unité ne peut pas placé dans un espace fermé où aucune ventilation ou dans suffisant n'est disponible.

ÉLECTRIQUE

Ne vainquez pas le but de sécurité de la prise de courant de pouvoir de bases. La corde de pouvoir devrait être mise en déroute pour qu'ils ne seront pas probablement marchés sur ou pincés par les articles placés sur ou contre eux.

ENTRETIEN

N'essayez pas d'assurer l'entretien de cette unité vous-même. En s'ouvrant ou le fait d'enlever le haut, le côté et les couvertures arrière vous exposeront aux voltages dangereux ou à d'autres hasards.

1.1.3. SAFTY BERÜCKSICHTIGUNGEN



WASSER UND FEUCHTIGKEIT

Um eine Brand- oder Elektroschockgefahr weitgehend auszuschließen, Gerät nicht Regen oder Feuchtigkeit aussetzen. Gerät nicht in der Nähe von Bade- oder Waschwannen, Wasch- oder Spülbecken, feuchten Kellern oder Schwimmbecken betreiben.

STABILITÄT

Das Gerät nicht auf wacklige Karren, Ständer, Halterungen oder Tische stellen, da es herunterfallen und Verletzungen verursachen könnte.

BELÜFTUNG

Vordere und hintere Belüftungsöffnungen nicht versperren. Das Gerät muss ausreichend be- und entlüftet werden können, damit es sich nicht während des Betriebs überhitzt. Daher darf das Gerät nicht in geschlossenen Räumen aufgestellt werden, in denen keine ausreichende Be- und Entlüftung gewährleistet ist.

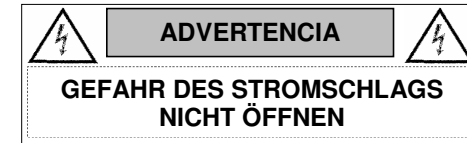
STROMVERSORGUNG

Nicht den Schukostecker modifizieren. Das Stromkabel sollte so verlegt werden, dass es nicht durch Auftreten oder durch spitze oder scharfe Gegenstände beschädigt werden kann.

WARTUNG

Das Gerät nicht eigenmächtig warten. Durch das Öffnen des Geräts (Abziehen der oberen, seitlichen und hinteren Abdeckung) setzen Sie sich lebensgefährlichen Spannungen aus.

1.1.4. CONSIDERACIONES DE SEGURIDAD



AGUA Y HUMEDAD

Para reducir el riesgo de fuego o electrochoque, no exponga la unidad para llover o humedad. No haga funcionar la unidad cerca del agua – como; bañera, lavatorio, fregadero o tina de lavandería, sótano mojado o cerca de una piscina.

ESTABILIDAD

No coloque esta unidad en un carro inestable, soporte, soporte o mesa. La unidad puede caerse, causando la herida seria.

VENTILACIÓN

No bloquee delantero y críe la ventilación. El corriente de aire apropiado es requerido asegurar la operación confiable y previene la unidad de sobre la calefacción. La unidad no puede colocado en un espacio incluido donde ninguna ventilación o en suficiente está disponible.

ELÉCTRICO

No derrote el objetivo de seguridad del enchufe de poder que da buenos conocimientos. La cuerda de poder debería ser derrotada de modo que ellos probablemente no sean andados en o pellizcados por artículos colocados sobre o contra ellos.

REVISIÓN

No intente atender esta unidad usted mismo. Abriéndose o quitar la cumbre, el lado y las tapas traseras le expondrán a voltajes peligrosos u otros riesgos.

1.2. System Requirements

- Windows PC with one available PCI-e x8 or PCI-x 64bit/100/133MHz slot. Microsoft Windows XP / Vista.
- Apple Mac Pro, Power PC with PCI-e with one available PCI-e x8 slot. Mac OS X 10.4 or higher.



1.3. Technical Support

Phone	818-435-6007
FAX	818-576-0324
E-mail	support@dulcesystems.com
Web	www.dulcesystems.com

If the product requires service, please contact Dulce Systems' Technical Support and obtain an RMA number. Ship the product properly packaged to:

Dulce Systems
Attn: RMA
9532 Topanga Canyon Blvd, Chatsworth, CA 91311

2. Getting Started

The HD Commander comes pre-assembled and ready for use, simply follow the steps outlined in this manual and the HD Commander will be ready for work.



Please do not discard the boxes and packing materials in case you need to reuse them later. Always ship the product in its original packaging. Improperly packaged products will be subjected to shipping damage, for which you will be liable for the repair.

2.1. Check List

- Installation and User's Manual
- HD Commander enclosure
- 5 disk drive modules
- PCI-e x8 or PCI-x 64bit/133Mhz 4 eSATA port host adapter
- Power Cord (North America user only)
- 1-meter eSATA cables

3. Overview

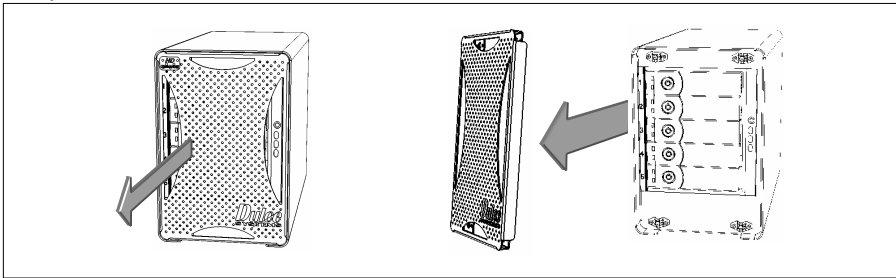
The HD Commander contains five removable 3Gb SATA disk drives. The drives are connected to an internal Port Multiplier device where all five drives can be accessed with one simple external SATA connection.

A PCI-e x8 or PCI-x 64bit/133MHz four eSATA port host adapter is supplied as well as a 1-meter eSATA cable.

3.1. Removing the Bezel

The front bezel can be easily removed to access the Disk Modules. The bezel is held on by four snap pins located at each of the four corners.

Using one hand or both hands, firmly grab the left and right side curved openings and pull forward.

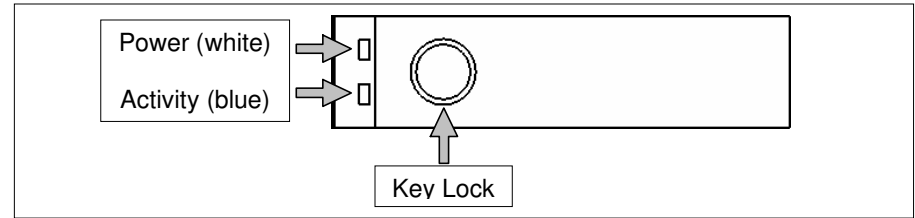


3.2. Disk Modules, Indicators, Controls, Connections

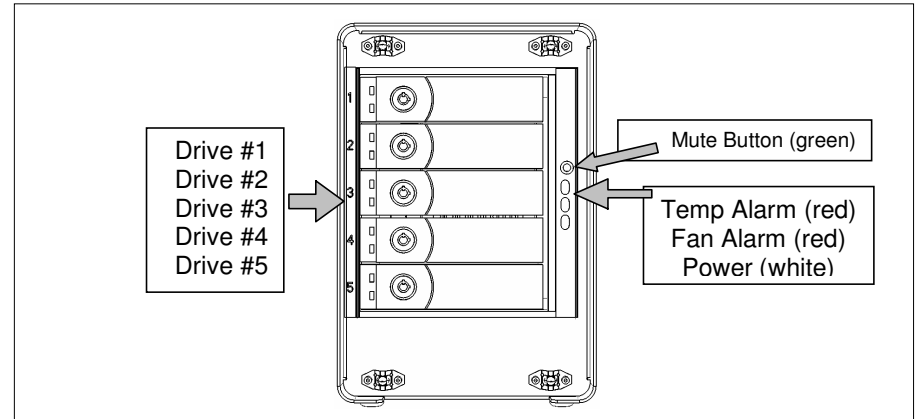
The disk enclosure has stand alone self-monitoring features. It monitors the temperature and the fan continuously. Should the temperature exceed a safe operating range or the fan spin below a preset minimum, the alarm will be triggered. A red indicator light will come on plus an audible alarm will sound.

Audible Alarm can be muted by pressing the green Mute button. The red indicator remains on until the condition is corrected.

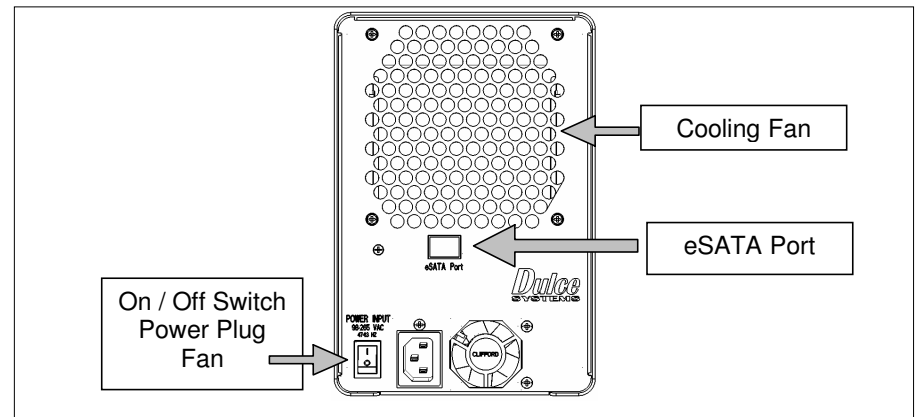
Drive Module



Front View with Bezel Removed

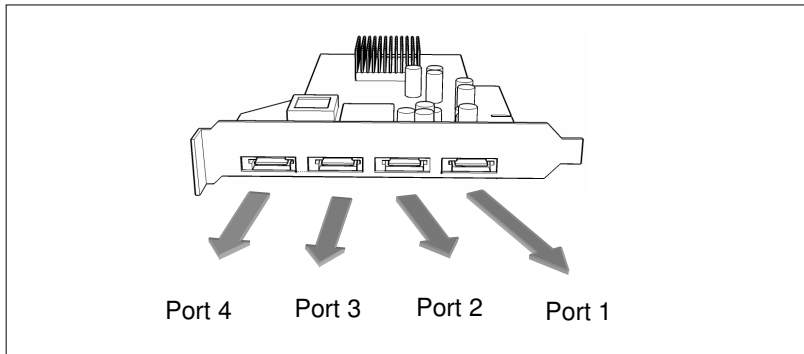


Back View



3.3. *PCI-e / PCI-x Host Adapter Port Assignment*

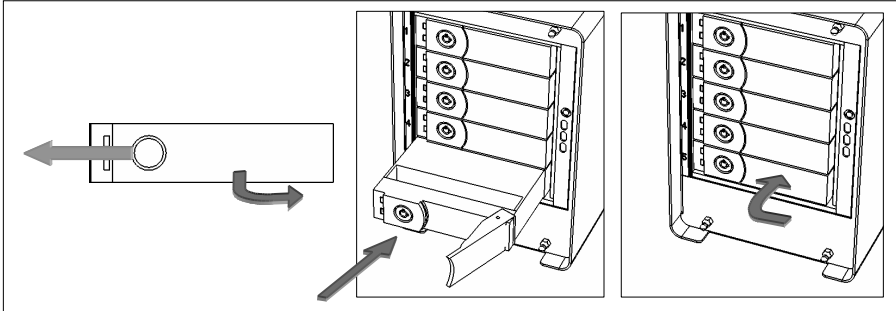
(This page intentionally left blank)



4. Installation

4.1. Disk Module Installation

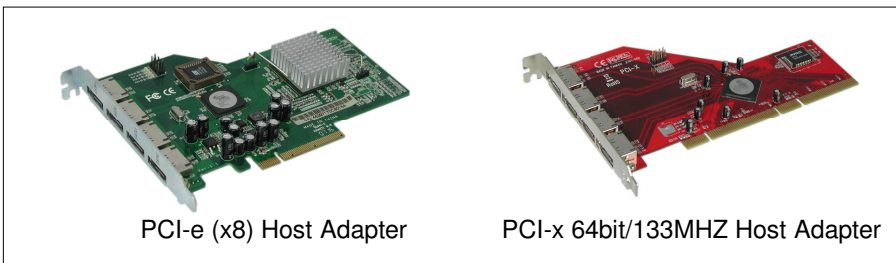
Remove the front bezel. Install each marked Disk Module into the slot indicated. Pull the lock of the Disk Module left to open the latch. Insert into slot until latch begins to close, close latch to lock Disk Module into place.



4.2. RAID Controller Installation

Turn off the computer and unplug the power source before proceeding with the RAID Controller installation.

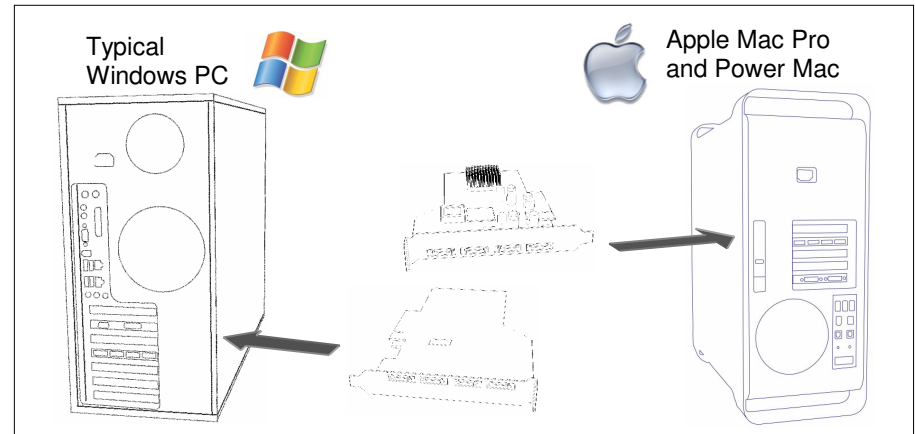
A PCI-e or PCI-x RAID Host Adapter is supplied with your HD Commander. The Host Adapter will require an available slot in your computer.



PCI-e and PCI-x are not compatible nor are they interchangeable with each other. A PCI-e Host Adapter can only be installed in a PCI-e equipped computer and PCI-x Host Adapter in a PCI-x equipped computer. Some computers support both PCI-e and PCI-x such as the HP xw series but not Apple Macs.

4.3. Host Adapter Installation

Turn off the computer and unplug the power source before proceeding with the PCI-e host adaptor installation.



4.3.1. PCI-e Controller Installation

The PCI-e (also known as PCI-express) Host Adapter requires a x8 slot or larger. Computers with PCI-e slots less than x8 will not accommodate the Host Adapter. PCI-e slots x8 or larger will work. Some PCI-e slots have x8 slots but electrically it is x4 or less. As long as a slot is mechanically x8 or larger, it will work. A slower electrical speed will also work but at reduced performance.

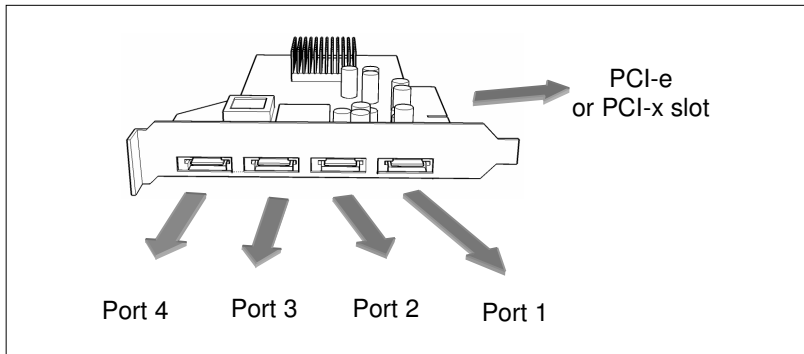
Apple Mac Pro (Intel) and newer versions of Power Mac G5 support PCI-e x8, as well as the HP xw series workstations.

4.3.2. PCI-x Controller Installation

The PCI-x Host Adapter operates at 64 bit at up to 133MHz. The Host Adapter will operate with a slower PCI-x slot such as the 100MHz slots, but it could affect performance.

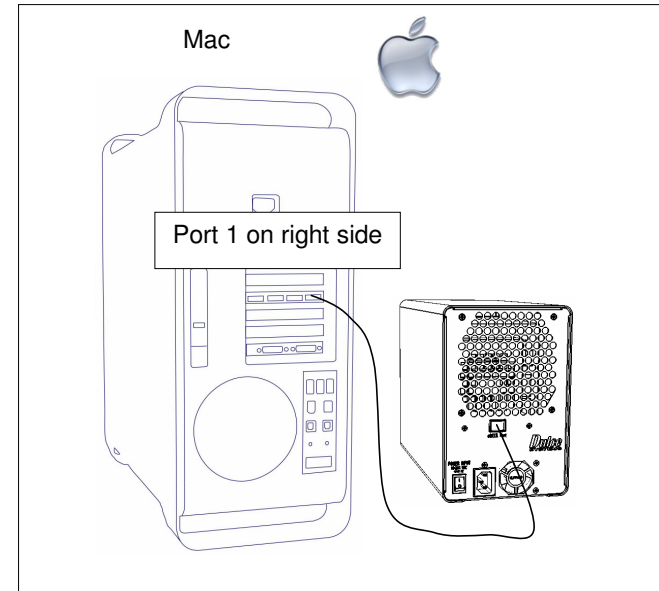
4.4. Making the Connections

Install the PCI-e or PCI-x adapter card into a free compatible slot in the computer.

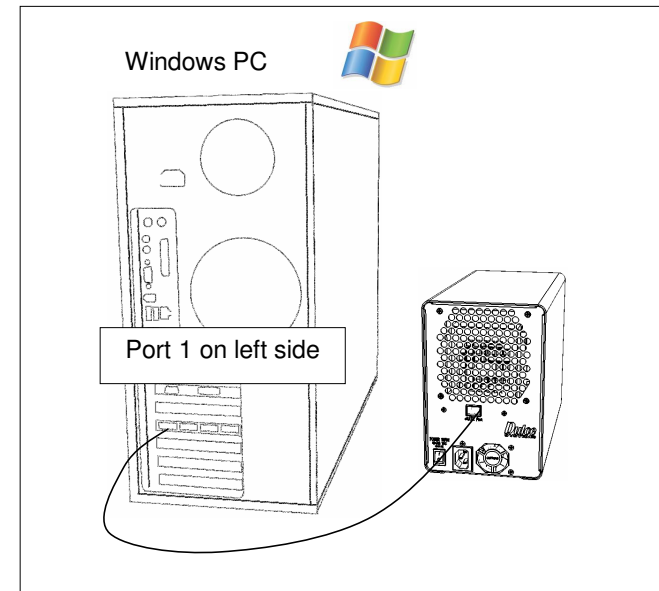


Attach the supplied eSATA cable to the Host Adapter and the disk unit as shown next. It does not matter which port is used, but to be consistent, use Port 1 for your 1st enclosure, then the 2nd and the 3rd as you add more enclosures.

4.4.1. Mac Connection



4.4.2. Windows PC Connection



4.5. Driver Installation

4.5.1. Mac Pro – Expansion Slot Utility Settings

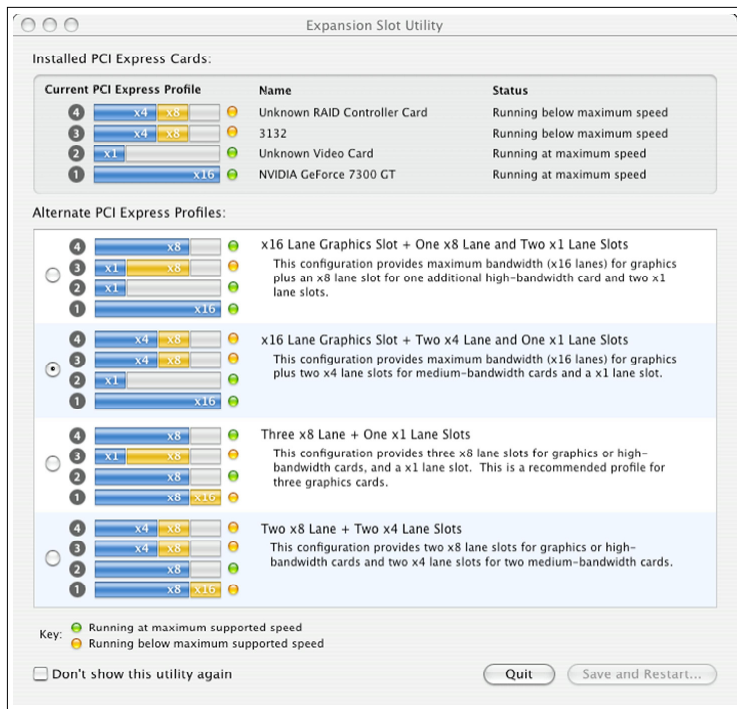


This section applies exclusively to the Apple Mac Pro, this section can be skipped for all other computers.

The Mac Pro (Intel Xeon-based) will detect changes in the PCI-e slot configuration, it will automatically launch the Expansion Slot Utility where you can make performance adjustments for the various PCI-e slots. The utility can be manually started also, it can be found at: Under my Mac Pro: /System/Library/CoreServices.



The 4 port eSATA Host Adapter will operate at x4 speed. Make sure that your video capture/playback card and video display card also get a sufficient x value. Example below shows the eSATA port Host Adapter in slot 3, a popular video capture card in slot 2, the Dulce RAID Controller in slot 4, and the standard video graphics card in slot 1.



4.5.2. Mac Driver Installation



For the latest Mac drivers, please visit our web site and download the appropriate driver for your Mac.

Download From: www.dulcesystems.com/download

The installer will start automatically, follow the on screen instructions.

4.5.3. Windows Driver Installation



After boot, Windows will detect the RAID Controller and launch the "Found New Hardware Wizard." Click Cancel to dismiss the wizard.



Download the latest driver appropriate for your version of Windows.

Download From: www.dulcesystems.com/download

Unzip the downloaded folders and place the content on the desktop.

Launch the Hardware Update Wizard (can be found at Start > Control Panel > System > Hardware < Device Manager).

Expand Other Devices, right click RAID Controller, click Update Driver..., click Yes then Next.

Select "Install from a list....(Advanced)", click Next.

Browse to the unzipped folder and follow the instructions on screen.

5. Formatting and Partitioning

5.1. Apple OS X Formatting



The Apple Disk Utility is the tool to format / partition the HD Commander. To start Disk Utility, move the pointer to the upper left corner of screen, click on Go then click on Utilities. Locate and launch Disk Utility.

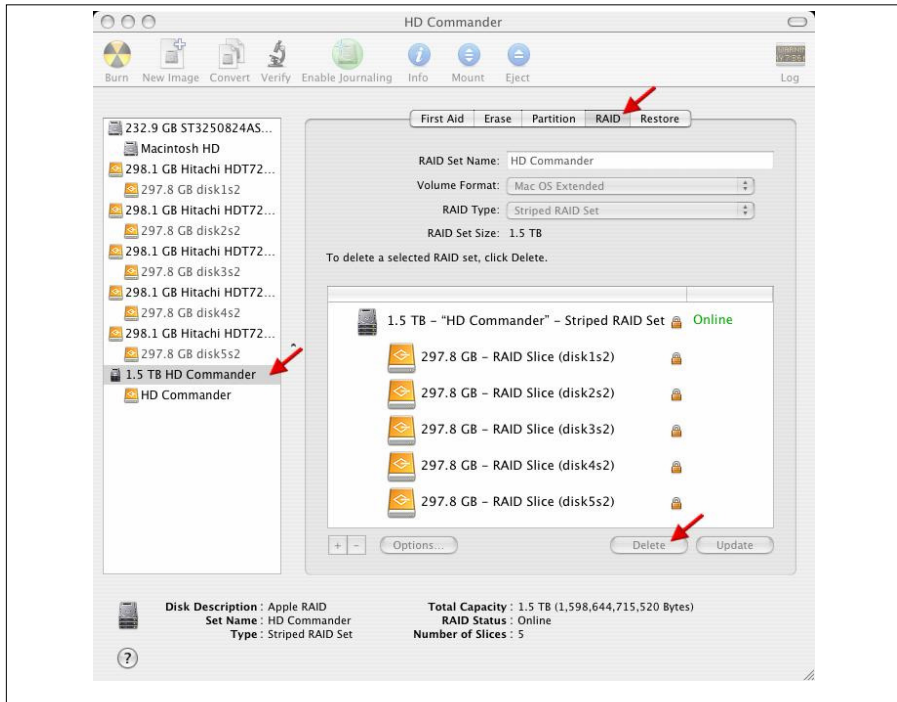
5.1.1. Erase an Existing RAID Set and Partition

Should it be necessary, you may need to delete an existing RAID set to start things off clean.

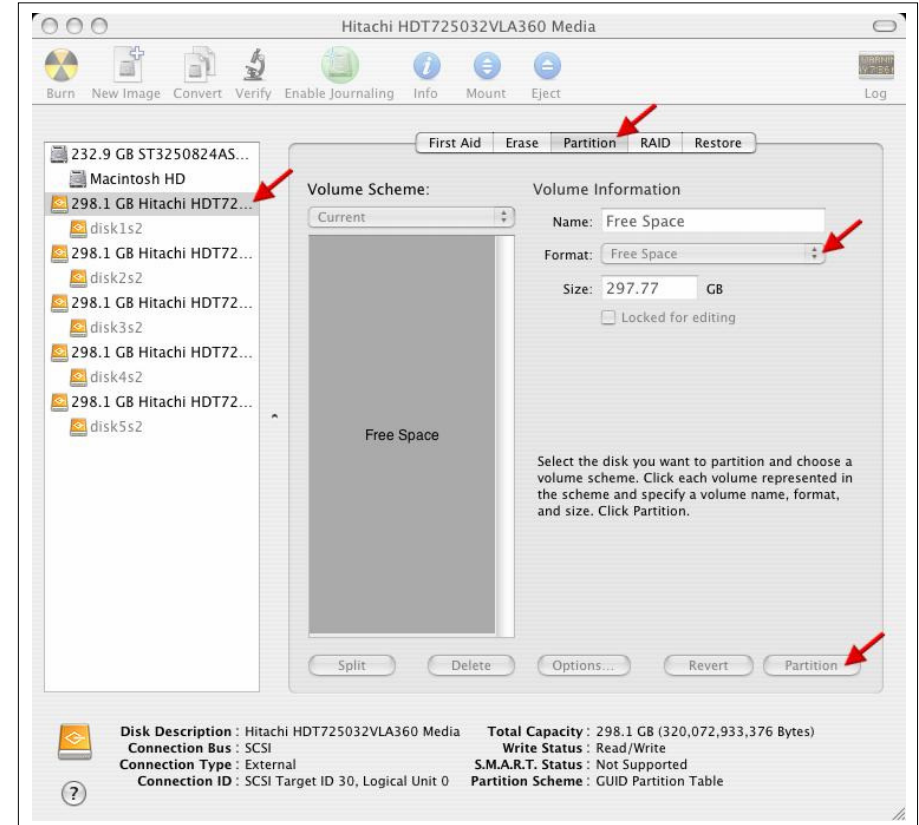


If you have other RAID Sets, you might consider turning them off 1st before proceeding with the erase to eliminate any accidental data erasures.

To delete the RAID set: Select the RAID tab on top, then the HD Commander RAID set on the left drive list (your RAID Set name might be different), click on Delete to delete the RAID set. Then....

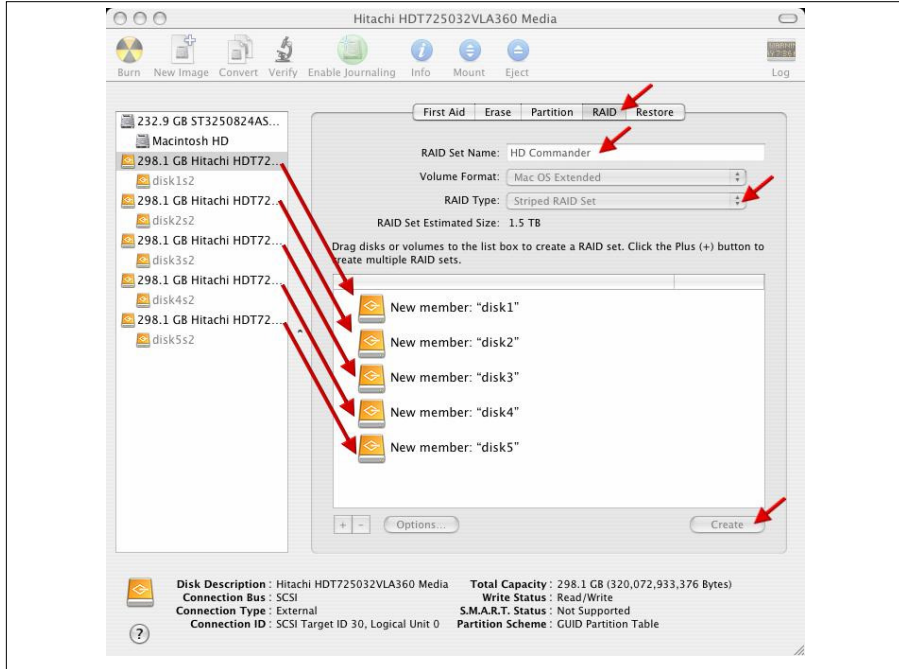


To make the former RAID Set disks as Free Space: Select the Partition tab at the top, select one of the former RAID Set disk on the left drive list, select Free Space at the Format pull down menu. Click on Partition at lower right to make Free Space of that disk. Repeat this for the other disk drives.



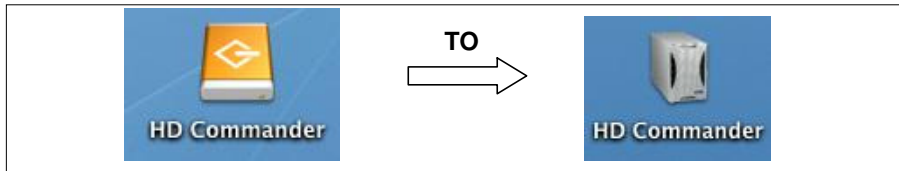
5.1.2. Create a New RAID Set

Select the two free disks on the left side drive list and drag them into the list box, click on RAID tab at the top, change RAID Set Name as desired, change RAID Type to Striped RAID Set, click on Create on lower right.



The drive will appear on the desktop after successful completion of the Partition.

5.1.3. Change the Icon



Disk Utility uses a generic default icon for the drives, this can be changed to the cooler looking Dulce icon. Visit our download page to get the icons and instructions.

www.dulcesystems.com/download

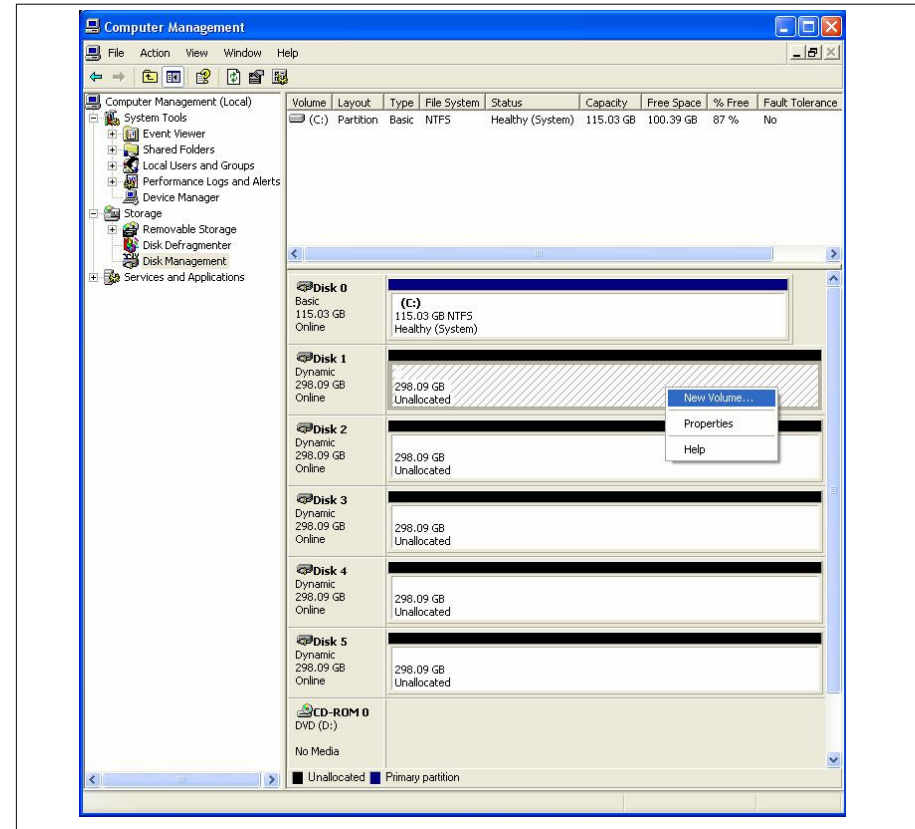
5.2. Windows XP / Vista Formatting



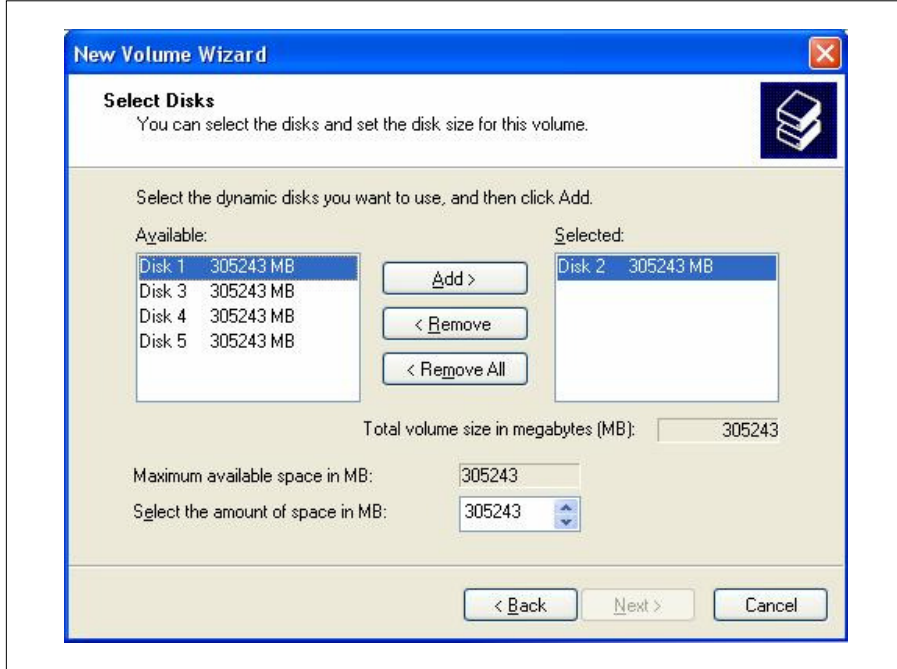
Start Disk Management (can be found at Control Panel > System and Maintenance > Administrative Tools > Computer Management. Under Storage.)

If the Initialize and Convert Disk Wizard starts, select the two disks to initialize them and then to convert them to Dynamic Disks.

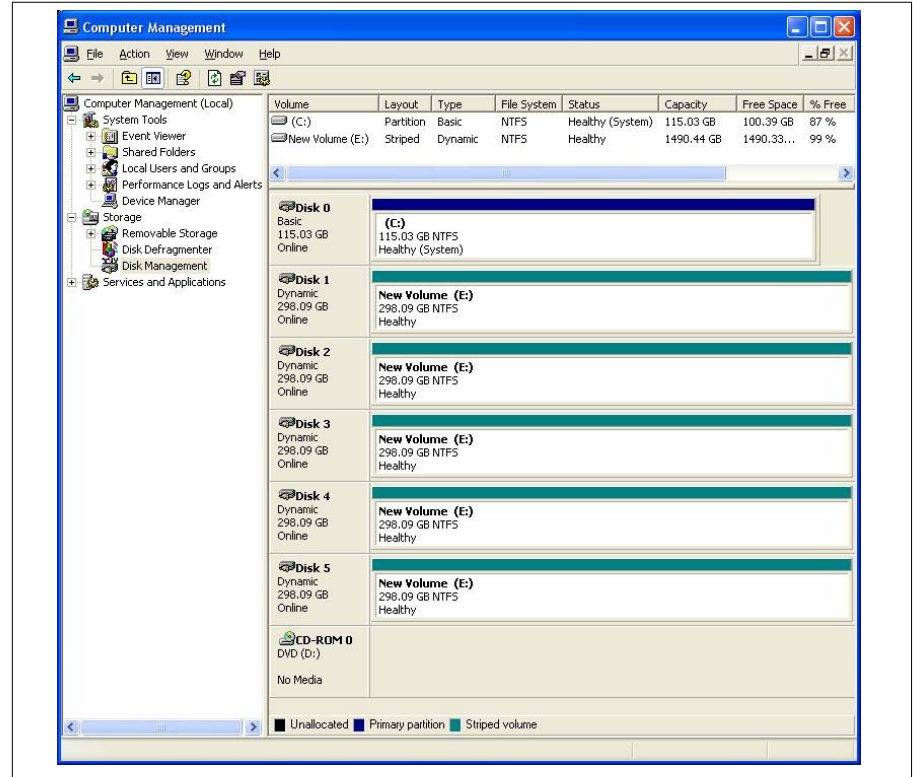
To stripe the two disks: Point to Unallocated of Disk 1, right click > New Volume > Next. Select Stripe > Next. Select and add Disk 2 > Add > Next.



Repeat adding until all five drives are selected, then click Next.



Assign drive letter as desired > Next. Check the Perform a Quick Format box > Next > Finish.



The HD Commander appears as a striped volume and a single drive letter.

6. Limited Warranty

WHAT THE WARRANTY COVERS

Dulce Systems warrants your product against any defect in material and workmanship and conforms to Dulce published specifications under normal use.

WHAT THE WARRANTY DOES NOT COVER

The warranty does not cover equipment which has been damaged due to accident, misuse, abuse, fire, flood, "Acts of God," or other contingencies beyond our control; use of incorrect line voltages; improper or insufficient ventilation; failure to follow operating instructions; or improper or unauthorized repair; improperly packaged for shipping; packaged in non-approved shipping container; shipping damage.

The warranty is voided by removal or alteration of the product or parts identification labels.

Dulce has no liability for general, consequential, incidental or special damages. These include loss of recorded data, the cost of recovery of lost data, lost profits and the cost of the installation or removal of any Products, the installation of replacement Products, and any inspection, testing, or redesign caused by any defect or by the repair or replacement of Products arising from a defect in any Product.

WHAT THE WARRANTY PERIOD IS

Dulce Systems warrants your Quad, Duo Quad, HD Commander product for 36 months and if the product is registered with Dulce within 30 days of purchase, we will extend the warranty for another 6 months totaling 42 months. We warrant the Duo for 36 months. The warranty period begins at the date of shipment to the original end user, company or organization.

Our warranty applies to repaired or replaced Products for the balance of the applicable period of the original warranty or ninety days from the date of shipment of a repaired or replaced Product, whichever is longer.

WHAT WE WILL DO TO CORRECT THE PROBLEM

We may elect which remedy or combination of remedies to provide at our sole discretion. We shall have a reasonable time after determining that a defective Product exists to repair or replace a defective Product. Our replacement Product under its limited warranty will be manufactured from new or reconditioned parts.

Your exclusive remedy for any defective Product is limited to the repair or replacement of the defective Product.

We will return the repaired or replacement Product to you prepaid using the same method of shipping (ex: overnight, ground, 2nd day, ...) as was shipped to us. If a more expedited return shipping method is required, extra charges might apply at our discretion.

HOW YOU CAN GET SERVICE

Contact our Technical Support to obtain a RMA (Return Materials Authorization) number. The model number, serial number, and description of the problem will be required. A valid proof of purchase might be required to further validate the Products warranty eligibility, the valid proof of purchase document must show the product model, serial number, purchase date, and supplier name. If the valid proof of purchase is not available, the original manufacturing date of the product will be used to determine the warranty period.

No returns will be accepted without a RMA number. We reserve the right to refuse the delivery of the return.

You shall bear all shipping, packing and insurance costs and all other costs, excluding parts and labor, necessary to effectuate repair or replacement under this warranty.

All products returned to us must be shipped in the original packaging or Dulce approved packaging. If you do not have the original packaging, call us to request packaging. A nominal fee will be charged for the requested packaging and for shipment. Ship the RMA to us pre-paid.

Products that are improperly packaged for shipping; packaged in a non-approved shipping container; or incur shipping damages are not covered under warranty.

HOW STATE LAW RELATES TO WARRANTY

In the United States, some states do not allow exclusion or limitation of incidental or consequential damages, so the limitations above may not apply to you. This warranty gives you specific legal rights and you may also have other rights which vary from state to state.

7. Product Registration



REGISTER NOW

Please visit our web site and register online.

www.dulcesystems.com/register

A valid proof of purchase might be required to further validate the Products warranty eligibility, the valid proof of purchase document must show the product model, serial number, purchase date, and supplier name. If the valid proof of purchase is not available, the original manufacturing date of the product will be used to determine the warranty period.



www.dulcesystems.com