

Console Port

(16 Port Nway Switch)

User's Manual

Table of Contents

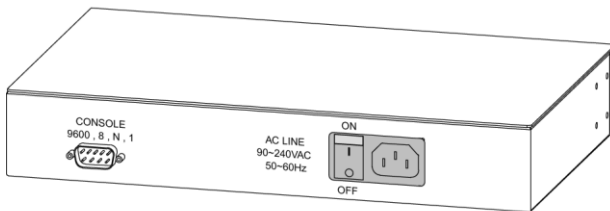
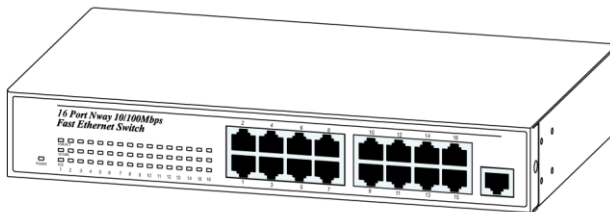
Chapter 1	3
Console port features overview	3
Chapter 2	4
Hardware installation	4
Accessories:	4
Chapter 3	5
Software Setting	5
Open Hyper Terminal	5

Chapter 1

Console port features overview

- Supports real time status read/write operation
- Provides on line link status.
- Supports port setting for N-Way or force mode operation.
- Supports Link Fault Tolerance on Trunking port.
- Supports 16 groups port based V-LAN.
- Two MAC-based Trunking groups from 2 to 6 ports of each.
- Supports Load Balancing on Trunking port.

16 Port Nway Smart Switch



Rear panel

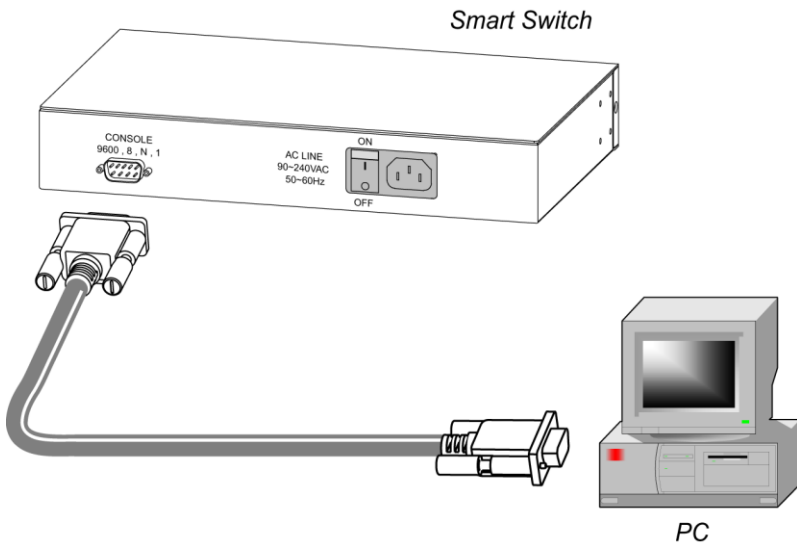
Chapter 2

Hardware installation

Accessories:

- One Null modem cable.
- One D-SUB 9 pin female connector on rear panel

Turn off your PC & Smart Switch powers, and then connect the cable from PC Serial port to Smart Switch D-sub connector.



Note: When you connect the cable from PC Serial port, please remember which serial port you connected. (Please refer to the step 3 of page 4)

Chapter 3

Software Setting Open Hyper Terminal

Following the steps to open the program.

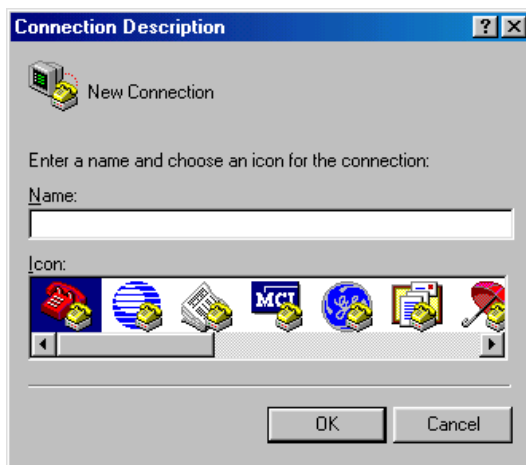
Step 1:

Start ⇒ Programs ⇒ Accessories ⇒ Communications ⇒
HyperTerminal



Step 2:

Enter any name for new connection, and then press OK.



Step 3:

Choose serial port that you connect.



Step 4:

Configuration COM port properties.

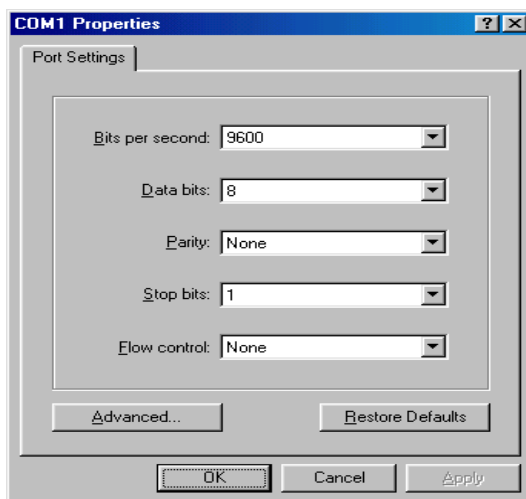
Bits per second: **9600**

Data bits: **8**

Parity: **None**

Stop bits: **1**

Flow control: **None**



Step 5:

Press enter key at keyboard when you see the cursor blinking.

You will see

```
16 Port Smart Switch
-----
| CHIPSET FEATURES SETUP |
| LOAD EEPROM DEFAULTS  |
| SAVE SETUP & RESET SWITCH |
| EXIT WITHOUT SAVING   |
|-----|
| < U > : Up select item |
| < D > : Down select item |
| < S > : Save & Exit Setup |
| < Q > : Quit           |
|-----|
| Note   : Flow Control, Back Pressure, QoS, VLAN, Trunk... |
|-----|
| Message : |
|-----|
```

The configuration on PC is successful. Please follow the instruction on the screen to do all the setting.