

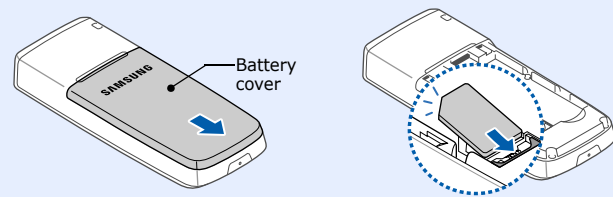
SAMSUNG SGH-B100 User's Guide

• Depending on the software installed or your service provider or country, some of the descriptions in this guide may not match your phone exactly.
 • Depending on your country, your phone and accessories may appear different from the illustrations in this guide.

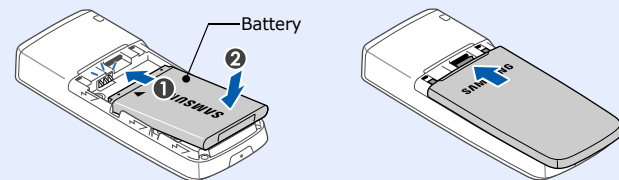
Printed in Korea
 Code No.: GH68-17262A
 English (SEA). 12/2007. Rev. 1.0
 World Wide Web
 http://www.samsungmobile.com

Installing the SIM card and battery

1. Remove the battery cover and insert the SIM card.

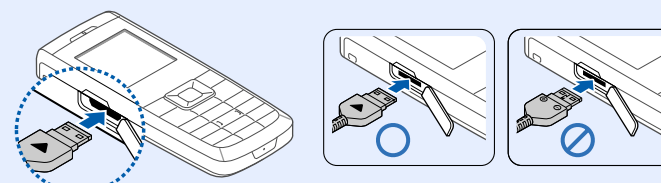


2. Install the battery and reattach the cover.



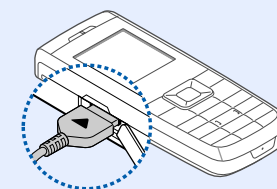
Charging the battery

1. Plug the supplied travel adapter.



With the triangle facing the front of your phone

2. When charging is finished, unplug the adapter.



Note: Do not remove the battery from the phone without unplugging the adapter first. Otherwise, the phone may be damaged.

Phone layout and key functions



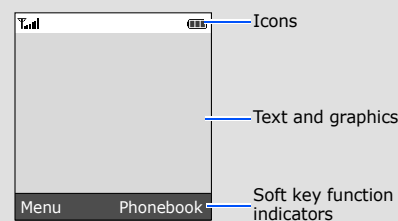
Silent mode Press and hold **#** in Idle mode to disable all sounds on the phone. To exit, press and hold this key again.

SOS mode Press **C** 4 times in Idle mode with the keypad locked to send an SOS message to preset phone numbers. Once the SOS message is sent, the phone will change to SOS mode and will receive calls only from the registered recipients. Upon receiving a call from the SOS message recipients, the phone will automatically answer the call. Press **End call** to exit SOS mode.

Keypad lock mode Press and hold ***** in Idle mode to lock the keypad and ignore accidental key pressing. To unlock, press **Unlock** and then *****.

Display

Your phone is in Idle mode when you are not on a call or using a menu. You must be in Idle mode to dial a phone number.



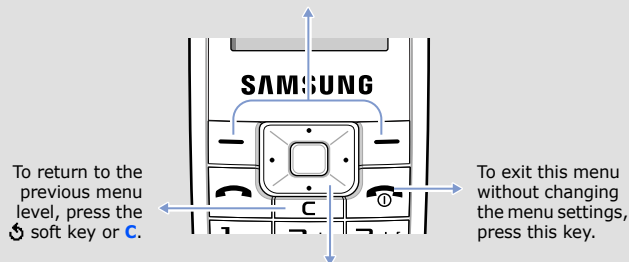
Your phone displays the following status indicators on the top of the screen:

Icon	Description
	Signal strength
	Call in progress
	Out of your service area; you cannot make or receive calls except for emergency calls
	GPRS network
	Roaming network
	Call ringer set to vibrate
	Silent mode
	Mute mode, during a call
	Call diverting feature active
	SOS message feature active
	New text message
	New multimedia message
	New voicemail message
	Keys locked
	Alarm set
	Battery power level

Using the menus

In Idle mode, press the **Menu** soft key to enter the main menu.

Labels at the bottom corners of the display show the current soft key functions. Press the left soft key (**Left**) or right soft key (**Right**) to perform the function indicated.



To return to the previous menu level, press the **Left** soft key or **C**.

To exit this menu without changing the menu settings, press this key.

Use the 4-way navigation keys as shortcuts to access your favourite menus.

- In Idle mode, press the **Menu** soft key.
- Select **Phone settings** → **Shortcuts**.
- Select a key.
- Select a menu to be assigned to the key.

To select or modify a menu or feature:

- In Idle mode, press the **Menu** soft key.
- Press the Navigation keys to reach a desired menu and then press the **Select** soft key or **OK**.
- If the menu contains any submenus, locate the one you want by pressing the Navigation keys. Press the **Select** soft key or **OK** to enter the submenu.
 If the selected menu contains additional submenus, repeat this step.
- Press the Navigation keys to find the setting of your choice.
- Press the **Select** soft key or **OK** to confirm your chosen setting.

Shortcut numbers

You can quickly access the menu you want by using shortcut numbers. The shortcut number displays in front of the menu name in Menu mode.

Switching on or off the phone

- Press and hold **Power** for more than one second to switch on the phone.
- If the time & date message appears, press the **Yes** soft key and set the time and date by the following onscreen instructions.
- Press and hold **Power** for more than two seconds to switch off the phone.

Changing the display language

- In Idle mode, press the **Menu** soft key.
- Select **Phone settings** → **Language**.
- Select a language.

Making a call

- In Idle mode, enter an area code and phone number, and press **Call**.
- Press **End call** to end the call.

Answering a call

- When the phone rings, press the **Accept** soft key or **Call** to answer a call. Press the **Reject** soft key or **End call** to reject the call.
- Press **End call** to end the call.

Menu map

1. SIM AT*	4.8 Power on/off 4.9 Extra tones	8. Phonebook
2. Call records	5. Messages	8.1 Search 8.2 New entry 8.3 Group search 8.4 Edit group 8.5 Speed dial 8.6 Delete all 8.7 Copy all to 8.8 Memory status 8.9 SDN*
2.1 Missed calls 2.2 Received calls 2.3 Dialed calls 2.4 Delete all 2.5 Call time 2.6 Call cost*	5.1 Text messages 5.2 Multimedia messages 5.3 Push messages 5.4 Configuration messages 5.5 SOS messages	9. Phone settings
3. Network services	6. Funbox	9.1 Display settings 9.2 Greeting message 9.3 Own number 9.4 Language 9.5 Security 9.6 Extra settings 9.7 Shortcuts 9.8 Connection settings 9.9 Reset settings
3.1 Call diverting 3.2 Call barring 3.3 Call waiting 3.4 Network selection 3.5 Caller ID 3.6 Closed user group	6.1 WAP browser 6.2 Games 6.3 Sounds 6.4 Images 6.5 Delete all 6.6 Memory status	* Show only if supported by your SIM card.
4. Sound settings	7. Organizer	
4.1 Ringtone 4.2 Ring volume 4.3 Alert type 4.4 Keypad tone 4.5 Keypad volume 4.6 Message tone 4.7 Alert on call	7.1 Alarm 7.2 Calendar 7.3 Time & Date 7.4 Calculator 7.5 To do list 7.6 Voice memo 7.7 Currency exchange	

Adjusting the volume

- In Idle mode, press the **Menu** soft key.
- Select **Sound settings** → **Ring volume**.
- Press **Up** or **Down** to adjust the volume level.
- Press the **OK** soft key.

While a call is in progress, press **Up** or **Down** to adjust the earpiece volume.

Changing a ringtone for calls

- In Idle mode, press the **Menu** soft key.
- Select **Sound settings** → **Ringtone**.
- Select a ringtone.

Redialling recent numbers

- In Idle mode, press **Call**.
- Press **Up** or **Down** to scroll to the number you want.
- Press **Call** to dial the number.

Entering text

Changing the text input mode

In a text input field, press the right soft key and select the language mode you want.

T9 mode

- Press **2** to **9** to start entering a word. Press each key once for one letter.

The word you are entering appears on the display. It may change with each keypress. Finish entering the word before editing or deleting any keystrokes.

Example: To enter "Hello" in T9 mode, press **4, 3, 5, 5, and 6**.

- Press **#** to insert a space and enter the next word.

ABC mode

Press the keys labelled with the letter you want once for the first letter, twice for the second letter, and so on.

For example, press **2** three times to enter "C" and **5** two times to enter "K."

Number mode

Press the keys corresponding to the digits you want.

Symbol mode

Press the number keys corresponding to the symbol you want and press the **OK** soft key. You can press **Up** or **Down** to display more symbols.

Tips for entering text

- To move the cursor, press the Navigation keys.

- To delete characters one by one, press **C**. To clear the display, press and hold **C**.

- To insert a space between characters, press **#**.

- To change case in T9 mode or ABC mode, press *****.

- To enter punctuation marks in T9 mode or ABC mode, press **1**.

Sending an SMS message

- In Idle mode, press the **Menu** soft key.

- Select **Messages** → **Text messages** → **Write new**.

- Enter the message text.

Menu	Description
Menu > Messages > Text messages or Multimedia messages > Delete all	Delete messages in each message box or all messages at once.
Menu > Messages > Text messages or Multimedia messages > Memory status	Check memory information for messages.
Menu > Messages > Multimedia messages > MMS profile	Select or configure a connection profile to be used for MMS.
Menu > Messages > Text messages > Voice mail	Access your voicemail server and listen to messages on the network.
Menu > Messages > Text messages > Broadcast	Change settings for the service and access broadcast messages.
Menu > Messages > Push messages	Change the settings for the service and access or delete push messages.
Menu > Messages > Configuration messages	Access or delete messages containing network parameters from your service provider.
Menu > Messages > SOS messages	Activate the SOS message feature. Enter recipients and select the repeat mode.
Menu > Funbox > WAP browser	Launch and configure the web browser.

Important safety precautions

Read these guidelines before using your wireless phone. Failure to comply with them may be dangerous or illegal.

Drive safely at all times

Do not use a hand-held phone while driving; park your vehicle first.

Switching off when refuelling

Do not use the phone at a refuelling point (service station) or near fuels or chemicals.

Switching off in an aircraft

Wireless phones can cause interference. Using them in an aircraft is both illegal and dangerous.

Switching off near all medical equipment

Hospitals and health care facilities may be using equipment that could be sensitive to external RF energy. Follow any regulations or rules in force.

Interference

All wireless phones may be subject to interference, which could affect their performance.

Special regulations

Follow any special regulations in force in any area and always switch off your phone whenever it is forbidden to use it.

Water resistance

Your phone is not water-resistant. Keep it dry.

- Press the **Options** soft key and add items using the following options:

- Add objects:** add sounds, images, or animated images.

- Add templates:** add text templates.

- Add emoticon:** add emoticons.

- Add phonebook:** add Phonebook contacts.

- Add bookmark:** add bookmark items.

- Press the **Options** and select **Send only** or **Save and send**.

- If you select **Save and send**, select a memory location.

- Enter destination numbers.

- Press the **Options** soft key and select **Send message** to send the message.

Quick feature reference


This section provides brief explanations of features on your phone.

Menu	Description
Menu > SIM AT	Use a variety of additional services offered by your service provider.
Menu > Funbox > Games, Sounds, or Images	Access games, sounds, or images in your phone's memory.
Menu > Funbox > Delete all	Delete games, sounds, or images in each media box, or all media files at once.
Menu > Funbox > Memory status	Check the amount of memory in use for games, sounds, and images.
Menu > Organiser > Alarm	Set an alarm to sound at a specific time.
Menu > Organiser > Calendar	Keep track of daily or monthly schedule.
Menu > Organiser > Time & Date	Set the current time and date manually and set your local time zone.
Menu > Organiser > Calculator	Perform basic arithmetic functions.
Menu > Organiser > To do list	Create a list of tasks and assign a deadline to each task.
Menu > Organiser > Voice memo	Record voice memos and listen to them.
Menu > Organiser > Currency exchange	Do currency conversions.
Phonebook > Search	Search for contacts in Phonebook.
Phonebook > New entry	Add a new contact to Phonebook.

Sensible use

Use only in the normal position (held to your ear). Avoid unnecessary contact with the antenna when the phone is switched on.

Emergency calls



Key in the emergency number for your present location, then press . Do not end the call until given permission to do so.

Small children and your phone

Keep the phone and all its parts including accessories out of reach of small children.

Accessories and batteries

Use only Samsung-approved batteries and accessories, such as headsets and PC data cables. Use of any unauthorised accessories could damage your phone and may be dangerous.

	Risk of explosion if a battery is replaced by an incorrect type. Dispose of used batteries according to the instructions.
	At very high volume, prolonged listening to a headset can damage your hearing.

Qualified service

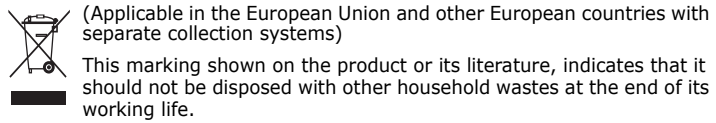
Only qualified service personnel may repair your phone.

Menu	Description
Menu > Call records > Missed calls, Received calls, or Dialed calls	View the most recent calls you have dialled, received, or missed.
Menu > Call records > Delete all	Delete the call logs in each call type or all logs at once.
Menu > Call records > Call time	View the duration of recent calls you have dialled and received. Also reset the time counter.
Menu > Call records > Call cost	View the cost of your calls.
Menu > Network services	Access network services offered by your service provider.
Menu > Sound settings > Ringtone or Ring volume	Select a ringtone for incoming calls or a volume level.
Menu > Sound settings > Alert type	Select an alert type for the call ringer.
Menu > Sound settings > Keypad tone or Keypad volume	Select a tone which the phone sounds when you press a key or a volume level.
Menu > Sound settings > Message tone	Select the alert ringtone for incoming SMS, MMS, and broadcast messages, or set how often you are informed of a new message.

Menu	Description
Phonebook > Group search	Search for Phonebook contacts in caller groups.
Phonebook > Edit group	Select a ringtone and image for incoming calls and messages from members of a group. Also change the group name.
Phonebook > Speed dial	Assign speed dial numbers (2 to 9) for eight of your most frequently dialled numbers.
Phonebook > Delete all	Delete all Phonebook contacts stored in the phone's memory, on the SIM card, or both.
Phonebook > Memory status	View the total number of Phonebook contacts in the phone's memory or on the SIM card.
Phonebook > Copy all to	Copy all of the contacts stored on the SIM card to the phone's memory, or vice versa.
Phonebook > SDN	Access the list of service numbers assigned by your service provider.
Menu > Phone settings > Display settings	Change settings for the display and backlight.
Menu > Phone settings > Greeting message	Enter the greeting message to be displayed when the phone is switched on.
Menu > Phone settings > Own number	Check your phone numbers or assign a name to them.
Menu > Phone settings > Language	Select a language to be used for the display text.

Correct disposal of this product

(Waste Electrical & Electronic Equipment)



To prevent possible harm to the environment or human health from uncontrolled waste disposal, please separate this from other types of wastes and recycle it responsibly to promote the sustainable reuse of material resources.

Household users should contact either the retailer where they purchased this product, or their local government office, for details of where and how they can take this item for environmentally safe recycling.

Business users should contact their supplier and check the terms and conditions of the purchase contract. This product should not be mixed with other commercial wastes for disposal.

Menu	Description
Menu > Sound settings > Alert on call	Set the phone to alert you when you receive a new message or when the time for an alarm comes during a call.
Menu > Sound settings > Power on/off	Select the melody that the phone sounds when it is switched on or off.
Menu > Sound settings > Extra tones	Set additional tones for the phone.
Menu > Messages > Text messages or Multimedia messages > Inbox, Outbox, or Draft	Read received, sent, or saved messages.
Menu > Messages > Text messages or Multimedia messages > Write new	Create and send messages to other mobile phones.
Menu > Messages > Text messages or Multimedia messages > Templates or Emoticon templates	Preset templates of frequently used messages or emoticons.
Menu > Messages > Text messages or Multimedia messages > Settings or Setup	Set options for using messaging services.

Menu	Description
Menu > Phone settings > Security	Protect the phone against unauthorised use.
Menu > Phone settings > Security > Mobile Tracker	Track your phone when it is stolen or lost. When someone tries to use your phone with other SIM card, the phone will automatically send the preset tracking message to your family or friends. This feature may be unavailable due to certain features supported by your service provider.
Menu > Phone settings > Extra settings	Set the automatic redialling feature or the answering method.
Menu > Phone settings > Shortcuts	Set the Navigation keys as shortcuts to access your favourite menus directly.
Menu > Phone settings > Connection settings	Create and customise the profiles containing the settings for connecting your phone to the network.
Menu > Phone settings > Reset settings	Reset the phone to the factory default settings.

SAR information

Your wireless phone is a radio transmitter and receiver. It is designed and manufactured not to exceed the emission limits for exposure to radio frequency (RF) energy set by the European Union (EU) Council. These limits are part of comprehensive guidelines and establish permitted levels of RF energy for the general population. The guidelines are based on the safety standards that were developed by independent scientific organisations through periodic and thorough evaluation of scientific studies.

The standards include a substantial safety margin designed to assure the safety of all persons, regardless of age and health.

The exposure standard for wireless phones employs a unit of measurement known as Specific Absorption Rate (SAR). The SAR limit set by the EU Council is 2.0W/kg. The highest SAR value for this model phone was 0.909 W/kg.