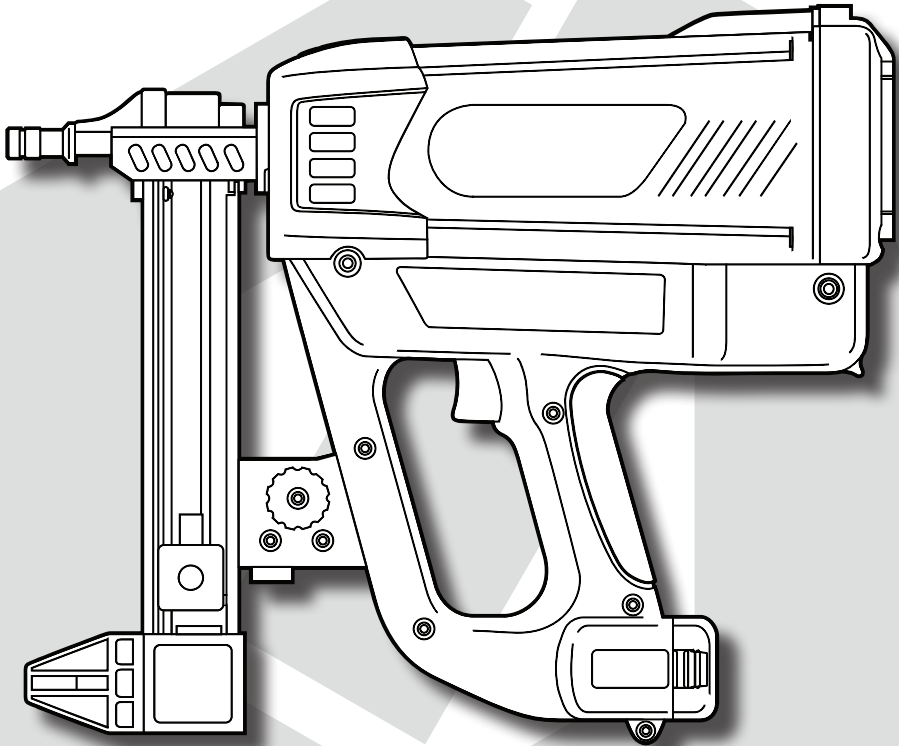


ICCONNS™

Serious Connections

GT-3 & GT-3ST GAS TOOL



USER MANUAL

1. GENERAL SAFETY INSTRUCTIONS

A. THE USE OF INTERNAL COMBUSTION, GAS OPERATED NAILER TOOL

The ICCONS™ Gas Nailer is referred to as “tool” in this general safety instruction.

ICCONS™ Pty Ltd is referred to as “manufacturer” in this general safety instruction.

Introduction

- Only those fasteners which are specified in the operating instructions shall be used in the tool. The tool, the fastener, the fuel cell and the battery specified in the operating instructions are to be considered as one unit safety system.

- Only spare parts specified by the manufacturer or his authorized representative shall be used in the service or repair of the tool.

- Repairs shall be carried out only by the manufacturer or his authorized representative.

- Keep the tool, fasteners, fuel cell, battery and charger out of the reach of children.

Safety of the Fastener Driving Tool

- Check prior to each operation that the safety mechanism is functioning properly. Rectify any loose fasteners or defects on the tool before use.

- Only use the tool for nailing application for which it was designed.

- It is not permitted to make any modification to the tool, fuel cell or battery, other than those specified by the manufacturer.

If the tool is weakened or damaged by:

- Punching or engraving;

- Modification not authorized by the manufacturer;

- Guiding against templates made of hard material;

- Dropping or pushing across the floor; use as a hammer;

- Apply excessive force of any kind; it should be taken to service and inspect by the manufacturer or authorized agents.

- Operator should carry out regular maintenance (cleaning and lubrication) in accordance with the operation manual to keep the tool in good working order.

- The fastener driving tool should be serviced properly and at regular intervals in accordance with the operation manual.

Safety at work

- Make sure the workplace is clean and well lit.

- Stay alert, watch what are you doing, and use common sense when operating the tool. Do not use tool while tired or under the influence of drugs, alcohol, or medication.

- Always assume the tool is loaded. Never point any tool at yourself or at any other person.

- The tool must be carried pointed downward while moving locations. Never carry the tool with your finger on the trigger.

- Never press your hand on the front of the tool. The tool must be operated only when it is in contact with the material to be fixed.

- The operator must be in a stable position when using the tool. Operate the tool in the manner that should the tool recoil, there is no risk of injury to the operator.

- When using the tool, the operator and any bystanders must wear appropriate eye and ear protection.
- When not in use, remove the battery, fuel cell and fasteners, return the fastener follower to guide locking position, and return the tool to its carrying case.

Safety for Handling Fasteners

- Do not load the fasteners with the trigger and/or work-contacting element pressed.
- Ensure that you use the correct length of fastener with the depth adjuster correctly set, so that nails do not protrude when a fixing is made.
- Do not drive fasteners on top of other fasteners.
- Never drive fasteners into free space or areas with concealed hazards. This will avoid a hazard caused by free flying fasteners and excessive strain of the tool. Take particular care when nailing close to edges as fasteners can break-out and deflect out of the substrate.
- If tool jams or misfires, always remove the battery and fuel cell prior to examination of the tool. If the problem persists stop operating the tool, unload the fasteners, and contact the manufacturer or authorized agents for service.

Safety for Gas-operated Nailer Tool

- The tool must not be used in a combustible environment.
- The tool must be used in well-ventilated areas. Exhaust gases in a confined space can be hazardous. Do not use the tool outside in the rain or where excessive moisture is present.
- Keep the tool from heat sources as the

pressurized fuel cell could be damaged.

- Do not smoke when handling the fuel cell.
- Keep away from your face and eyes. Do not inhale its content.
- The temperature of the tool may increase depending on the firing frequency. Observe the maximum cycle rates given in the operating instructions.

B. THE USE OF FUEL CELL

Introduction

The fuel cell is an aerosol product corresponding to the 2008/47/EC regulations. It contains:

- Liquefied hydrocarbon gases (Butane & Propane).
- Lubricant to help tool work smooth.

Safety for Handling Fuel Cell

- The fuel cell is always pressurized with propellant to sustain the fuel supply to the metering valve, even if the fuel is used up. Its contents are extremely flammable. The fuel cell is not reusable. Do not attempt to refill.
- Do not spray towards a flame or an incandescent body. Keep away from any heat sources and from electrostatic charges. Do not smoke when handling or loading fuel cells.
- Do not expose to temperatures exceeding 50°C. **Warning:** Liquid gas can cause injury in the event of contact with the skin or eyes.
- Store and use the cartridge in a well-ventilated area only. Do not inhale.
- Do not pierce or burn the cartridge after use.
- Keep away from children.
- Dispose of only in designated places.
- For optimum performance, use before the date indicated at the bottom of

the cartridge.

Transport

Transport of small amount in a private vehicle (<30kg) is permitted without a transport and safety sheet. The regulations by transport

Categories are:

- Road/Rail: ADR - RID - UN code 1950 class 2 code 5F

- Sea: IMDG - UN code 1950 + risk sheet FD S-U

- Air: IATA - UN code 1950 class 2.1
 Goods must be accompanied by a transport emergency card for road UN 1950 Transport by post is not permitted

Storage

- Stores and showrooms must comply with building regulations. All local instructions corresponding to fire regulations must be followed.

- Where possible, store fuel at stable temperature in the range: 5 to 25°C. Do not expose to temperatures exceeding 50°C. Do not use a tool that emit flames, sparks or reach high temperatures in the vicinity that fuel cells are stored.

- Do not store in designated thoroughfares, hallways or stairwells.

- Stores in a well-ventilated area. Fuel cells must not be displayed in shop windows.

- Storage with pyrotechnic products is not permitted.

First Aid

- Direct contact with liquid gas may cause burns or frostbite.

- In case of inhalation remove the person to fresh air, and encourage breathing. Should the casualty become unconscious, or breathing does not quickly return to normal, summon urgent medical assistance.

- If gas gets into the eyes they should be flushed out with copious amounts of water. Skin contaminations should be removed with soapy water.

- If symptoms persist, seek medical assistance.

C. THE USE OF BATTERY & CHARGING SYSTEM

Introduction

The adaptor, charger and the battery are designed to operate together as one system. Only use the 'ICCONS' Adaptor & 'ICCONS' Charger for charging the 'ICCONS' Batteries. The charging system is intended to be used in covered areas. Do not expose it to rain or to excessive humidity.

Do not recharge non-rechargeable batteries.

Before charging

- Arrange the adaptor output lead appropriately to avoid unnecessary damage, avoid laying output lead across walkway or doorway.

- Check the system before use, if cable or plug damaged do not use for charging battery, and replace it immediately.

- Keep the charger exhaust area clean and unblock to have the best cooling effect. Use dry cloth to clean the body and the contact of the charger or adaptor while it disconnected with the main power.

- Charge the battery in room temperature. If its temperature is less than 5°C or greater than 40°C will degrade the battery charging performance.

- If the battery charger abnormally heats up or gives off fumes during charging, disconnect the charger and separate with the battery immediately.

- This appliance is not intended for use by person (including children) with reduced physical, sensory and metal capabilities, or lack of experience and knowledge, unless they have been given supervision or instruction concerning use of the appliance by a person responsible for their safety.

- Children should be supervised to ensure that they do not play with the appliance.

Safety for Handling Battery

- Do not short circuit the battery pack.
 - Do not pierce or open the battery pack.

- Do not store the batteries at a temperature above 50°C.

- Do not incinerate spent batteries.
 - Only charge one battery at a time.
 - Batteries and charging systems must be recycled or taken to a designated disposal area.

Storage

- Store the batteries in a cool and dry place.

- Over-discharge will degrade the batteries capacity. Fully charged the batteries if stored for a long time. Recharge it in each 3 months can help to compensate the self-discharged and keep the battery in a good condition.

- The charging systems should store at a place out of reach of children. Children should be supervised to ensure that they do not play with the appliance.

- Always disconnect the batteries with tools or charger while stored.

2. TECHNICAL SPECIFICATION

A. GAS NAILER

Model No.	GT-3 / GT-3ST
Dimensions	
Length	400 mm
Height	350 mm
Width	100 mm
Weight	3.85 kg
Magazine Capacity	40/30 pins
Recommended Usage	1,200/Hr 5,000/Day

Noise

The noise output of the tool can be excess of 90dBA, this value can be higher dependent on the environment in which the tool is going to be used. We strongly advise that checks are made prior to use and the appropriate ear protection is used.

Vibration

The vibration/mechanical impact risk is low, it is the users' responsibility to ensure that the operators are not put at risk due to environmental and work piece specifications.

B. FUEL CELL

Model No.	GT-3FUEL
Dimensions	
Height	154 mm
Diameter	32mm

* Extension adapter for the fuel cell will be needed.

Pressure	18 bar
Capacity	1,000 shots

Caution! The fuel cell is always pressurized with propellant to sustain the fuel supply to the metering valve, even the fuel is used up. Its contents are extremely flammable. The fuel cell is note reusable. Do not attempt to refill. Only specified Fuel Cell and Lubricant by ICCONS can be use on the tools, please consult ICCONS agents or local distributors.

C. FASTENER

Dimensions

Length	13-38 mm
Shank	Ø2.6-3.0 mm

Applications:

Steel to Steel	Ø3.0mm step
Steel Plate to Concrete	Ø2.6mm
Steel Plate to Hard Concrete	3.0mm step

With changeable nose piece systems, users are allowed to shoot for different purpose. Please consult local agents for further details.

Only those fasteners which are specified in this specification shall be used in ICCONS Gas Tools. The ICCONS Gas Tool and the fasteners specified are to be considered as one unit safety system.

The adaptor, charger and the battery are designed to operate together as one system.

D. AC/DC ADAPTOR

Model No.	BCA1215
Input	100-240V ~ 0.6A Max. 50-60Hz
Output	12V DC 1.5A

E. BATTERY CHARGER UNIT

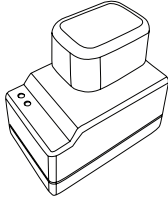
Model No.	GT-3BCU
Input	12V DC 1.5A
Output	7.3V DC 700mA
Charging Time	2.5 Hours
Battery Type	ICCONS GT-3BCP

F. BATTERY CELL PACK

Model No.	GT-3BCP
Type	Ni-MH
Output	6V DC
Capacity	1.5Ah, 5 cells

3 - OPERATIONS

A. Charging



Steps:

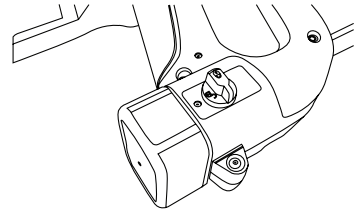
1. Plug the battery charger into the proper AC voltage source, both green and red light will remain alight.
2. Insert the battery into charger, red light will alight indicating the battery is charging.
3. It takes about 2.5 hours for charging.
4. When fully charged, green light will remain alight.
5. After charging, unplug the charger from the power source.

- If both lights are blinking in same pace, remove the battery cartridge and plug again.
- If this happens continuously, the battery cartridge may be damaged. Consult authorized serviceman for replacement of new battery cartridge.

NOTE:

- Never attempt to open the charger or battery cartridge.
- The battery charger is for charging specific battery pack. Never attempt to charge battery pack from other manufacturer’s battery cartridge. Unsuitable battery cartridges may cause fire that causes injury.
- When the battery charger is being used, keep out of direct sunlight.
- To get better cooling effect, keep the exhaust area clean.

B. Installing and removing the battery



Steps:

1. Empty fasteners from the magazine and make sure the trigger is not pulled while installing the battery.
2. To install the battery, insert the battery cartridge until hearing a “click”.
3. Turn and lock the battery to avoid loosen during shooting.
4. To remove the battery, turn to unlock, grip the button at the back of battery cartridge and pull out.

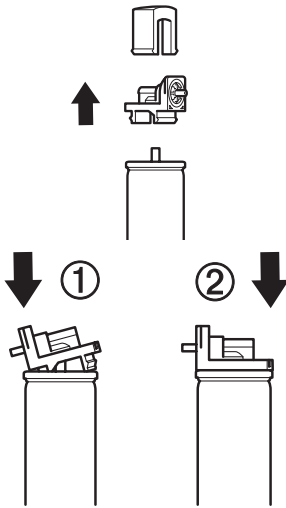
C. Battery Light Indicator

Green LED light blinks every 0.5 sec under working condition.	Battery level sufficient for working.
Red LED blinks every 4 sec or keep alighted under working condition.	Low battery level, need to unplug and recharge immediately.
Red LED blinks every second. The tool has entered protection mode.	Stop using the tool immediately and consult authorized serviceman for maintenance

NOTE:

- After using the tool, remove the battery from the tool to prevent the tool from being fired.

D. Preparing the fuel cell



Caution !

- Never attempt to use fuel cell from other manufacturer.
- Do not remove the cap when it is unused.
- Never drill a hole on the fuel cell.
- Do not inhale the gas. Breathing in the gas could cause sleepiness, dizziness or nausea.
- The fuel cell is not refillable, do not attempt to refill the gas.

Steps:

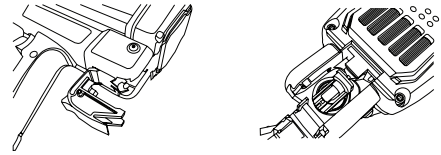
First ensure to use the correct colour valve, the colour of the rim for GT-3 / GT-3ST should be blue.

1. Detach the cap, attach the valve by pushing in the front edge.
2. Pushing the rear edge until it has "clicked".

NOTE:

- Make sure the fuel cell valve is attached firmly, if not, gas leakage may occur and create hazards to users and bystanders.

E. Installing and removing fuel cell



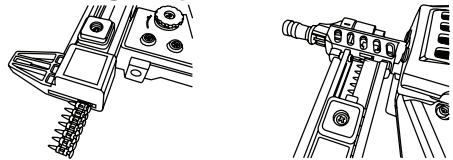
Caution !

- Make sure the trigger is not held while inserting fuel cell.
- Empty fasteners in the magazine before installing fuel cell.
- Do not press on the surface ground while installing.

Steps:

1. Push up and pull to open the fuel door.
2. Insert the fuel cell, direct the jet nozzle into the adaptor.
3. Put the can door over the valve and push it down to latch.
4. For removing fuel cell, reverse the above steps.

F. Loading the pins



Caution !

- Make sure the trigger is not held while loading the pins.
- Do not press on the surface ground while loading.

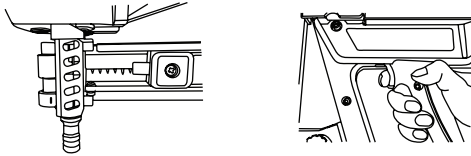
Steps:

1. Pull the follower holder to the bottom of the magazine, until it locks at the bottom.
2. Load the pins into the slit in the rear of the magazine until they reach the top of pin stopper.
3. Further pull the follower holder, press the button on the pin carrier

and release it gently.

4. For removing the pins, lock the follower at the magazine bottom and the pins will slide down. Further pull the follower for releasing all the pins.

G. Driving the pins



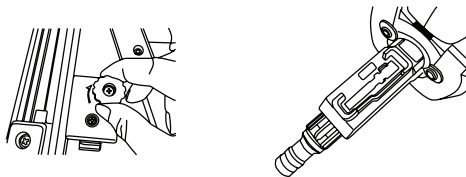
Caution !

- Please READ and UNDERSTAND the section “General Safety Instructions” for personal and working environment safety.
- If you spot of any abnormality about the tool, contact nearest authorized serviceman for inspection and repairing.

Steps:

1. Press the Nose of the contact arm against working surface (90° against the surface) firmly until you hear the fan motor is working.
2. Pull the trigger, the pins are driven to the object.
3. Release the trigger and lift the tool.

H. Cleaning jam



Jamming of pins could be evident if users cannot drive the fasteners properly, try following steps in subsequent order.

Caution !

- Place the tool on flat surface prior to releasing the magazine, (magazine may pop off suddenly).
- Read previous sections to fully understand battery cartridge installation/removal and unloading fasteners.

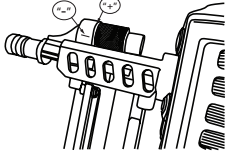
Steps:

1. Remove the pins, fuel cell and battery from tool
2. Pull down and lock the follower.
3. Pull the knob on the handle connections, keep pulling and turn the knob counter-clockwise, the magazine will release.
4. Clean any residue along the driving path in the nose piece and pin guide.
5. To install the magazine, first engage the magazine in the slot of the nose piece
6. Lock the magazine by pressing the connector finger in the lock.

NOTE:

- Do not release the magazine with fasteners inside. The follower may pop the pins out and cause injury.
- Wear safety goggles, the jammed fastener may jump out and hurt the user.

I. Adjust the driving depth



Caution !

- Please READ and UNDERSTAND the section 1 “General Safety Instructions” for personal and working environment safety.
- Never press the pin guide by bare hand or by any parts of the body.
- Never point the tools at anybody.

Steps: Adjust the knurled depth setting dial located at the front of the tool clockwise (+) to increase the driving depth, counter-clockwise (-) to decrease the driving depth.

NOTE:

- Do not over adjust the knurled depth setting dial, the threaded pin should be visible and protrude out from the end of the Dial.

J. Cleaning Filter

The filter at the back of the tool acts crucially to suck in air into the chamber. For maintaining the best performance of the tool users should always keep it clean.

1. Unscrew four screws on the back cover
2. Take out the back cover and clean the mesh with brush or air.
3. Put the back cover on the machine and fasten with four screws.

NOTE:

- Do not attempt to use water to clean the mesh. The cover and mesh must be dry when operating the tool. If wet it may easily cause malfunction to the tool.

4 - TROUBLESHOOTING

Preparing Tool for Operation - Battery/ Charger Problems

SYMPTOM 1

Battery Cell does not appear to accept charge. Green charger light does not come on after several hours.

Possible reasons	Services
Inoperative indicator lights on charger.	Try Battery in tool after 3 hours on charge cycle. If tool functions properly charger lights are not working correctly. Replace charger, or monitor time to ensure Battery Cell has adequate time for recharging. It's normal for Battery to feel warm after properly charging.
Damaged charger.	Discontinue use immediately and unplug from power source. Replace charger and tag or dispose of charger to prevent accidental reuse or connection to power source.

SYMPTOM 2

Red and green LEDs on charger are blinking alternately.

Possible reasons	Services
Battery is hot.	Remove battery from charger and allow to cool. Inspect battery charger and cartridge.

SYMPTOM 3

Red and green LEDs on charger are blinking simultaneously.

Possible reasons	Services
Battery damaged or cycle life exhausted.	Replace Battery.

TROUBLESHOOTING
Normal Stage Of Operation

SYMPTOM 1

Fan does not run.

Possible reasons	Services
Battery is not charged.	Charge Battery according to Operating Manual.
Battery Terminals or Handle battery contacts are oily, dirty, or corroded.	Clean Battery Cell terminals Clean Handle Battery Cell contacts as required.
There is electrical short somewhere.	The tool must be looked into by Authorized Serviceman.

SYMPTOM 2

Fan does not run, or runs slower than normal.

Possible reasons	Services
Battery is discharged.	Charge Battery Cell.

SYMPTOM 3

Fan runs intermittently.

Possible reasons	Services
Battery is loose or contacts are bent.	Snap battery back into its locked position. Bend contacts back into proper position.

TROUBLESHOOTING
Pre-Combustion/Combustion Stage of Operation

SYMPTOM 1

Contact Arm does not depress fully, tool does not operate.

Possible reasons	Services
Lockout Bar is stuck in lock-out position.	Check if there is not enough pins in the channel, load extra pins according to Operating Manual.
The nose piece is bent, or the channel is stuck with dirt.	Inspect if the nose piece and channel is clean. If it is damaged, consult authorized serviceman for repair and replacement of the parts.
Follower holder positions wrongly at the top of the magazine strip.	Slide gently the follower holder to the bottom and release.

Possible reasons	Services
Cylinder head O-Ring pinched.	Contact authorized serviceman for repair.
Jammed fasteners.	Clear jam according to User Manual.

SYMPTOM 2

Failure to install fasteners to nose piece.

Possible reasons	Services
Piston positioned wrongly.	Return piston to original position according to User Manual.
O-Ring is damaged and causing leakage of gas.	Contact authorized serviceman for repair.
Some dirt on the valve washer inside cylinder.	Contact authorized serviceman for repair.
Valve wave washers lose elasticity.	Contact authorized serviceman for repair.

SYMPTOM 3

Tool will not cycle - fan runs.

Possible reasons	Services
Fuel Cell is empty.	Replace Fuel Cell.
Spark does not occur.	Contact authorized serviceman for repair.

SYMPTOM 4

Fail to drive fasteners.

Possible reasons	Services
Water vapour surrounding spark causing short circuit.	Dry the spark area or contact authorized serviceman for repair.
Sealing pad damaged.	Contact authorized serviceman for repair.
Piston guide stuck with dirt.	Contact authorized serviceman for repair.

TROUBLESHOOTING
Power/Exhaust Stage of Operation

SYMPTOM 1

Tool operates properly, but fasteners do not drive fully.

Possible reasons	Services
Battery is discharged.	Charge battery.
Fuel Cell is low.	Replace fuel cell according to User Manual

SYMPTOM 2

Tool operates, but no fastener is driven.

Possible reasons	Services
Fastener strip may be binding.	Use only fasteners meeting designated specifications.

Follower holding wrong at the top of the pin strip.	Slide follower holder gently to the bottom and release to reset the pin strip in the magazine.
Jammed fasteners	Clear jam according to User Manual.

SYMPTOM 3

Operation of the tool is not stable.

Possible reasons	Services
Fuel Cell is low.	Replace fuel cell according to User Manual.
Spark Plug wire is loose.	Contact authorized serviceman for repair.
Filter element is dirty, causing tool to over-heat.	Remove filter element and clean according to User Manual.
Tool sleeve or O-Rings are dirty.	Contact authorized serviceman for repair.

SYMPTOM 4

Unstable performance.

Possible reasons	Services
Built-up dirt and debris inside cylinder	Contact authorized serviceman for repair.

SYMPTOM 5

Diminishing power.

Possible reasons	Services
Damaged piston or cylinder.	Contact authorized serviceman for repair.

TROUBLESHOOTING
Returning/Purging Stage of Operation

SYMPTOM 1

Tool operated and drove fastener, but piston did not return to up position.

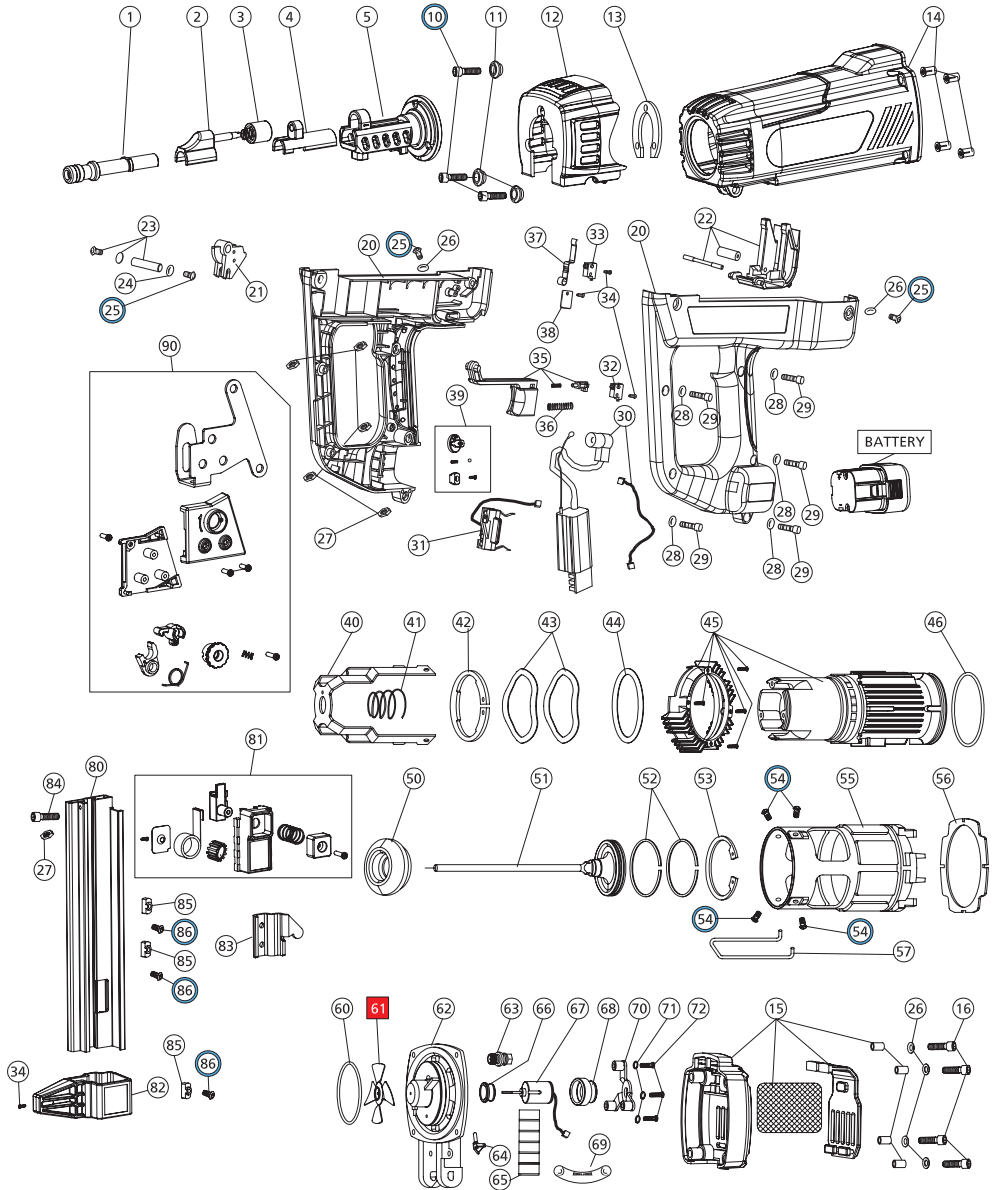
Possible reasons	Services
Mushrooming of Piston Tip.	Contact authorized serviceman for repair.
Exhaust ports on the sleeve are dirty or clogged	Contact authorized serviceman for repair.
Tool (Sleeve) or O-Rings are dirty.	Contact authorized serviceman for repair.

SYMPTOM 2

Combustion Chamber does not drop after tool cycles.

Possible reasons	Services
Contact arm is bent, or tool is dirty.	Clean tool or replace contact arm as require dirty.

5 - Parts List



POS.	CODE	DESCRIPTION	Thread lock	POS.	CODE	DESCRIPTION	Thread lock
1	NB1010	PIN GUIDE		56	NB1600	AIR DAM	
2	NB1390	GUIDE SLEEVE		57	NB1590	U-WIRE	
3	NB140B	Spring Dial		60	NB1610	HEAD O-RING	
4	NB142A	REAR SLEEVE		61	NB1620	BLADE ASSEMBLY	Red 271
5	NB1410	NOSE PIECE		62	NB1630	CYLINDER HEAD	
10	NB1040	SOCKET SCREW	Blue 242	63	NB1650	SPARK PLUG	
11	NB1050	BUSHING		64	NB1660	FUEL NOZZLE	
12	NB1120	DUST SHIELD		65	NB1670	MOTOR SLEEVE	
13	NB1070	SHIELD SPACER		66	NB1680	MOTOR BUMPER	
14	NB1Z10	HOUSING		67	NB1690	MOTOR	
15	NB1Z20	HEAD COVER		68	NB1700	MOTOR GUIDE	
16	NB1780	SOCKET SCREW		69	NB1640	CONNECTOR BOARD	
20	NB1Z30	HANDLE		70	NB1710	MOTOR HOLDER	
21	NB1130	FIRING CAM		71	NB1720	SPRING WASHER	
22	NB1Z40	FUEL DOOR		72	NB1730	ROUND HEAD SCREW	
23	NB1Z50	BUSHING		80	NB179L	TRACK (long)	
24	NB1110	METAL WASHER		80	NB179S	TRACK ST (short)	
25	NB1100	SOCKET SCREW	Blue 242	81	NB1ZAO	FOLLOWER	
26	NB1290	METAL WASHER		82	NB1910	TRACK CAP	
27	NB1170	LOCKNUT		83	NB1800	TRACK CONNECTOR	
28	NB1380	METAL WASHER		84	NB1160	SOCKET SCREW	
29	NB1370	SOCKET SCREW		85	NB1810	TRACK NUT	
30	NB1Z60	CONTROL UNIT		86	NB1820	SOCKET SCREW	Blue 242
31	NB1180	ELECTRODE ASSEMBLY		90	NB1140	HOOK & TRACK LOCK	
32	NB1220	TRIGGER SWITCH					
33	NB1310	MOTOR SWITCH		#	SCREW		
34	NB1270	SELF TAP SCREW		10	M5 x 25		Blue 242
35	NB1Z70	TRIGGER		16	M5 x 30		
36	NB1200	TRIGGER SPRING		25	M5 x 14		Blue 242
37	NB1300	SWITCH LEVER		29	M4 x 16		
38	NB1260	SWITCH PLATE		34	Z3 x 10		
39	NB1Z80	BATTERY LOCK		54	M5 x 6		Blue 242
40	NB1430	CAGE		72	M4 x 20		
41	NB1440	CAGE SPRING		84	M4 x 8		
42	NB1450	RETAINING RING		86	M5 x 8		Blue 242
43	NB1470	WAVE WASHER		92	Z4 x 10		
44	NB1480	FLAT WASHER		95	Z4 x 20		
45	NB1Z90	CYLINDER ASSEMBLY		#	NUT		
46	NB1520	CYLINDER O-RING		27	M4		
50	NB1530	BUMPER		85	M5		
51	NB1540	PISTON ASSEMBLY		#	WASHER		
52	NB1550	PISTON RING		24	12mm		
53	NB1560	RETAINING RING		26	10mm		
54	NB1570	SOCKET SCREW	Blue 242	28	9mm		
55	NB1580	COMBUSTION CHAMBER		71	M4		

6 - Disposal

Recycle the tool and its packaging in an environmentally friendly manner in accordance with the recycling regulations applicable in your country.

7 - Copyright

Copyright:
ICCONS Pty Ltd
12-18 Produce Drive
Dandenong South
Victoria, 3175
Australia

Passing on and duplication of this document, exploitation and disclosure of its contents are forbidden unless expressly approved. Violations render the offender liable to damages. All rights reserved for the event of patent, utility model or registered design applications.

This operating manual has been drawn up with the greatest care. Nevertheless, ICCONS Pty Ltd assumes no liability for possible errors in this operating manual and their consequences. Furthermore, no liability is assumed for direct or consequential damages resulting from the improper use of the tool.

The national safety and occupational safety regulations and the safety precautions given in this operating



ICCONS Pty Ltd
12-18 Produce Drive
Dandenong South
Victoria, 3175
Australia

Tel: +61 (03) 9706 4344
Fax: +61 (03)
Email: info@iccons.com.au
Web: www.iccons.com.au

This manual must be observed when using the tool. All product designations and brand names are the property of their owners and are not explicitly marked as such.

Amendments to content reserved.