

# Mounting Instruction for Tubular Safe (PL401S & PL4012)

## A. Tubular Safe

### Electronic Slide-in Module PL401S



III. 1

### Metal Cylinder PL4012



III. 2

### Magnet for Key Fixation



III. 3



III. 4

The magnet for key fixation needs to be screwed inside the slide-in module (ill. 3 & 4)

### Product contents PL4013 Adhesive Kit:

Cleaning petrol, abrasive fabric, cartridge Körapur 790/30, 1 mixer (ill. 5)

Not included:

Hot air blower, knife to cut off the mixer tip

## B. Adhesive Kit PL4013



III. 5

## C. pyKey PL1011



III. 6

## D. Important Instructions

1. Take care to mount the metal cylinder only so deep that the pyKey can be attached without difficulties.
2. Care must be taken that no water can penetrate into the system. When mounting the metal cylinder into galvanised tubes, care must be taken to seal the holes necessary for galvanising.
3. On the bottom of the metal cylinder is a hole for a micro switch. If no micro switch is used, the hole is closed with a stopper out of plastic.
4. The tube needs to be mounted at a downward angle of min. 2° to max. 5°.
5. While storing keys in the metal cylinders it is imperative to make sure that the inserted keys do not cause any jams. In some cases these might block opening respectively removing the slide-in modules. In order to avoid such obstructions and depending on number and size of the keys, we recommend using bags.
6. We only recommend a torsion-resistant construction for mounting the Tubular Safe to achieve a substantial improvement of the physical security. Qualification test demanded by Lock Your World.

## E. Mounting the Metal Cylinder (see Appendix 1)

Follow the »Instruction for glueing PL4013 Adhesive kit« (Metal Cylinder).

Note: No adhesive must be inside the metal cylinder! After glueing, check the faultless functionality of the slide-in module (opening & locking). **We recommend only a torsion-resistant construction for mounting the Tubular Safe to achieve a substantial improvement of the physical security. Qualification test demanded by Lock Your World.**

## F. Mounting in Brickwork (see Appendix 2)

Follow the »Instruction for glueing PL4013 Adhesive kit« (Brickwork).

Note: No adhesive must be inside the metal cylinder! After glueing, check the faultless functionality of the slide-in module (opening & locking).

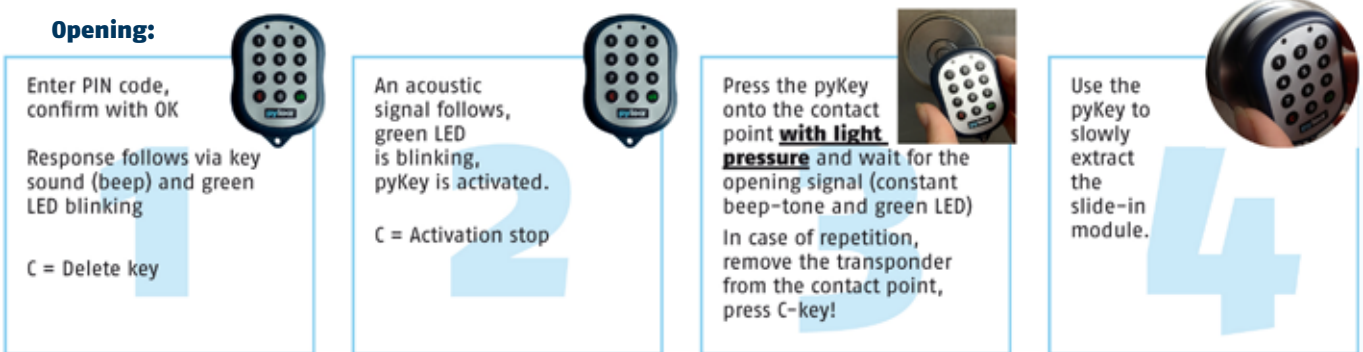
## G. Programming and Function Test

1. The slide-in module is programmed via the management tool according the instructions in the »pyware User Manual«. Where necessary towards the end of installation or for other individual adjustments, note the special instructions of the customer.
2. Check, if opening and locking functionality is faultless after pyKey activation before inserting the slide-in module into the metal cylinder.

**Note:** When programming via pyware software, continue with Chapter I »Function test and Preparation for programming«.

## H. Operation (see Appendix 3)

### Opening:



Enter PIN code, confirm with OK

Response follows via key sound (beep) and green LED blinking

C = Delete key

An acoustic signal follows, green LED is blinking, pyKey is activated.

C = Activation stop

Press the pyKey onto the contact point **with light pressure** and wait for the opening signal (constant beep-tone and green LED)

In case of repetition, remove the transponder from the contact point, press C-key!

Use the pyKey to slowly extract the slide-in module.

III. 7

**Note:** If removing the slide-in module is not possible, it has to be checked whether it can freely rotate in the metal cylinder. For this, press on the front with the palm of the hand and turn it. Is a free rotation possible, retry the opening process.

**Locking:** To lock, press the slide-in module back into the metal cylinder. Before locking it must be made sure that no soiling (dirt, dust) is visible on the outer casing or locking brackets of the slide-in module. These must be cleaned before locking.

**Attention:** Never insert the slide-in module into the cylinder with force. It ought to lock easily. As soon as any resistance is met, remove the slide-in module again and check and clear the causes.

**Important:** While storing keys in the metal cylinders, it is imperative to make sure that the inserted keys do not cause any jams. In some cases these might block opening or removing the slide-in modules. In order to avoid such obstructions and depending on number and size of the keys, we recommend using bags.

## I. Function Test and Preparation for Programming

1. Remove the lid at the bottom of the slide-in module.
2. Plug in the USB system cable and connect to a PC on which the Management-Software pyware is installed.
3. Details for programming are outlined in the »pyware User Manual«.

**If you have any further questions, we will be glad to help you:**

**Service Hotline on weekdays 8.00-16.00 MET: + 49 6052 912 808 8**

**J. Technical Datasheet**

# Tubular Safe (set)

comprising

**PL4011S Electronic Slide-In Module**

– seawater-resistant –

**PL4012 Metal Cylinder**

Organizational device and/or depot for safe key deposit

VdS G111061

Key Depot (SD1)

Environmental Class IV



## Attributes

- ▶ power supply via »pylock« pyKey
- ▶ batteryless lock, maintenance-free
- ▶ automatic locking w/o energy consumption
- ▶ seawater-resistant
- ▶ vandalism-proof
- ▶ magnetic fixation of the deposited keys on the seal's inside

### Weight & Measures

Metal cylinder:	L = 185 mm, outside diameter = 69.7 mm, inside diameter 61.5 mm
Slide-in module:	L = 88.3 mm; diameter = 61 mm
Weight in total:	ca. 1,000 g
Packaging:	reusable cardboard

### Optional:

Extended metal cylinder:	L = 255 mm; outside = 69.7 mm; inside = 61.5 mm
--------------------------	---

### Technical Data

Material:	front VA casting hard anodised aluminium
Power supply:	not integrated; via pyKey
Interface:	USB (mechanical), with extra data cable for configuration
Opening time:	smoothly adjustable via pyware software
Lock:	2 locking bolts (4 x 10 mm), swing out 3 mm; chromed steel, actuated via double anchor-solenoid 3 VDC; 2,5 W
Lifespan:	> 300.000 operations
Temperature range:	-35°C to +60°C (-31°F to 140°F)
Storage temperature:	-40°C to +65°C (-40°F to 149°F)
Protection class:	locked IP64; open IP53
Certification:	CE, VdS cl. SD1; Environmental CL. IV G111061

### Mounting Dimensions

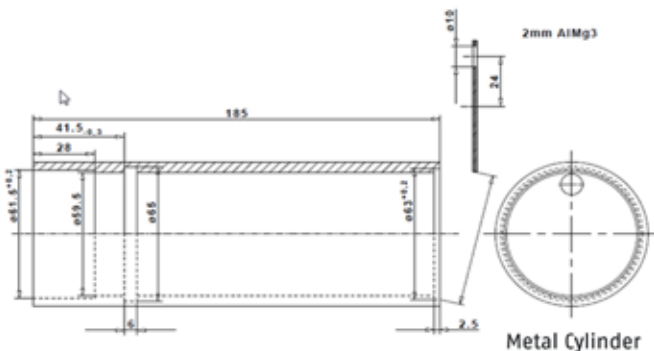
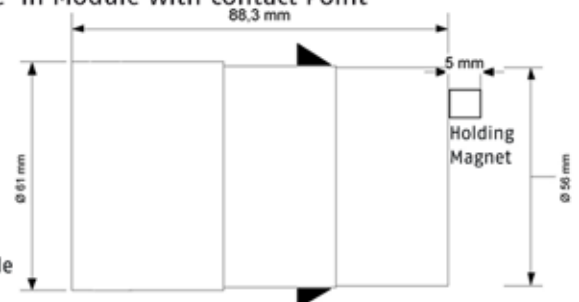
Inside diameter:	min. 70 mm; max. 71 mm
Depth:	min. 201 mm; for ext. cylinder 280 mm

### Product Contents

Electronic Slide-In Module with Contact Point

Magnet for key fixation

Metal Cylinder



All brands and trademarks of »Lock Your World«, »Lock Your World Technologies« and »pylock« are registered trademarks of »Lock Your World GmbH & Co. KG« or its subsidiaries and protected by law.