

Multi Media mini Projector



Operating Instructions

NOTICE: Please read the user manual carefully before using this product

Table of Contents

1. Safety and Maintenance Instruction.....	1
2. Features Overview.....	2
3. Product Specifications.....	2
4. Product Overview.....	3
● The Overview of Projector.....	3
● The Overview of Function Keys.....	3-4
● The Overview of Remote Control.....	5
5. Basic Operation.....	6
6. System Setup.....	8
7. Download Media Files from PC.....	13
● USB.....	13
● Projection Synchronizes with PC Screen.....	13
8. Battery Recharging.....	16
9. Trouble Shooting.....	17
10. Accessories.....	18

Thank you for buying this portable multi media mini projector.

This is a “Portable”, “Hand-size” projection device to play Movie, Music & Photo on a 50 inches projection screen size.

With built-in 3M optical light engine which is most advanced technology with the smallest size of projectors’ core light engine in core optical source, this mobile projector is perfect for business presentation, teaching etc.

Safety and Maintenance Instruction

To prolong the life of the mini projector, all the following safety, operating instructions and maintenance should be read, adhered to and followed before the unit is operated.

For your safety

1. Please carefully read this user manual before operating the projector.
2. Take a few moments to review the user manual while using it for the first time.
3. Do not store or operate the unit where it can drop into water or other liquid, care should be taken so that water or other liquid can not be spilled onto the unit.
4. Protect the unit from pinch or strike, always place it on a flat dry stable place.
5. The optical light engine is the one of the most important parts of the unit, great care should be taken to protect it from collision or press.
6. The unit should be situated away from direct sunshine or heat sources, such as radiator, electric heaters, heat registers, stoves or other units (including amplifiers) which produce heat, avoid placing it on top of stereo equipment that radiates heat.
7. Unplug this unit during lightning storms or when unused for long periods of time.

Accessories

Carefully unpack the package and make sure that you have all the following items. In the event that any item is missing or if you find any mismatch or damage, please promptly contact the dealer.

1. AC adaptor (5V2A) 1 piece



The projector is attached with a AC adaptor in the accessories. The power input of the AC adaptor ranges from 100V to 240V, covering all standard voltage around the world, it can be used all over the world.

Note: The above photo of AC adaptor is for reference only, please take the actual item as the standard.

2. USB Cable 1 piece



3. Remote Control 1 piece



4. User Manual 1 piece

5. Protective Pouch 1 piece



power adaptors with different specifications.

Trouble Shooting

This part is to introduce some solutions to common problems, if any malfunction occurs, please check the following first. If it still cannot be obviated, please contact the dealer or authorized service center in time, do not disassemble or attempt to repair it by yourself.

The following are some common problems and solutions for reference:

1 Projector cannot power on

- The battery has run out. Please recharge it with correct DC adaptor before operate.
- Fails to press "POWER" button. The power button is a precision component, press it carefully.

2 Image blurring

- Focus is not well adjusted. Adjust the gear of the lens to a proper position.
- The light source of the projector is too close or too far from the projection plane. The best distance is between 200MM-2000MM

3 No sound

- Volume is setted "MUTE" or volume is setted too low.
- #### 4 Remote control has no function

- Check if the insulation sheet in the remote control is taken off, or the battery in the remote control has run out, replace with new button cell batteries to try

5 Fails to connect with PC

- Poor contact or the USB cable is with quality problems. Make sure the connection with USB cable is perfect and USB cable itself is of good quality.

8. Use this unit for its intended use as described in this user manual

Maintenance and precaution

1. Please clean the unit with a soft dry chiffon.
2. Do not touch the light engine lens directly with hands or sharp items, do not spray any cleanser directly on the light engine lens.
3. Do not place any objects on the unit or press it hard.
4. Never block the air outlet of the unit with materials such as cloth while the unit is working. (air outlet as shown in Figure I)

Features Overview

- Support photo format: JPG、BMP
- Support video format: AVI、MOV、MP4
- Support music format: MP3、WMA
- Support text format: TXT
- Support calendar/ clock display
- Support USB, projection synchronizes with PC screen
- Support basic setup
- Support OTG, data transmission from PC through USB
- Support remote control

Product Specifications

Product dimension: 130*55*22 MM;

- Resolution: 640*RGB*480;
- Brightness: 12 cd/m2 (projection distance: 1000 MM);
- Contrast: 80:1;
- Display technology: LCoS (Liquid Crystal on Silicon)
- Backlight type: LED;
- Min projection distance: 210MM (5.6 inches)
- Max projection distance: 2500MM (72 inches)

- Built-in memory: 128MB—4GB;
- Card type: SD/MMC;
- Built-in speaker: 8R/1W*1;
- Earphone out: stereo speaker out.
- Power supply: DC +5V/2A DC terminal: 3.5*1.3*6MM;
- Power consumption: 5W;
- Built-in battery: 3.7V/2050 mA H;
- Li-polymer battery: 120 minutes battery time (rechargeable).

IV、Product Overview

i、The Overview of Projector

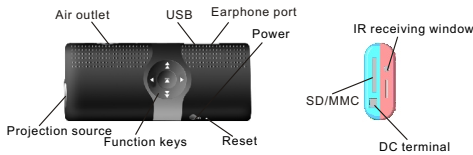


Figure I Projector overview

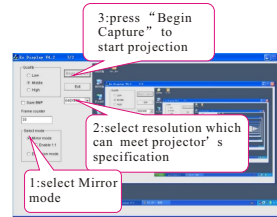
The Overview of Function Keys

S.P.: Short Press

L.P.: Long Press

Key	MENU	PHOTO	MUSIC	MOVIE	CALENDAR	SETUP	OFF
▲	S.P. Memory function; Device switching	S.P. To prev Screen	S.P. To prev Screen	S.P. To prev Screen	S.P. To prev Screen	S.P. To prev Screen	-
	L.P. -	L.P. -	L.P. -	L.P. -	L.P. -	L.P. -	-
VOL +	S.P. Move the cursor up/down	S.P. Volume control	S.P. Volume control	S.P. Volume control	S.P. Set automatic page turning time	S.P. -	-
	L.P. -	L.P. -	L.P. -	L.P. -	L.P. -	L.P. -	-

- Attached in the accessories, insert one end to PC and the other to projector's USB port.
- 4) After confirm, the screen displays the following two options, as shown in Figure X:
 - 5) Select "USB SUB Display" and press "ENTER" to enter connection status with PC
 - 6) Run "EzDisplay.exe" program in the "install" file



Step iv connect SUB Display

By then, USB SUB-Display has finished connection and can be used. To exit press "EXIT" in the operating interface.

Note: The projector supports AVI/MOV/3GP/MP4 movie format in resolution of 640*480 in 30 frame per second. Use Win AVI software to convert file to the supported file. Please refer to www.winavi.com to download video convert software.

Battery Recharging

The projector is built with high capacity rechargeable Li-Polymer battery. When battery has run out, please recharge it before operation or operate it while recharging with AC adaptor.

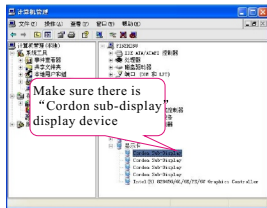
- 1) The red LED indicator will be on while charging, and it will be off after charging finished. The battery will be fully charged in about 3 hours.
 - 2) The projector can be operated while charging.
- Note: the DC adaptor must be DC 5V/2A. Never use

2)Open “install” file, and run the “install_subvga. Bat” setup program to install it :



Step ii install driver

3)Follow the on-screen prompt to complete the installation, then restart PC. After restart, return to desktop, press “Management” of “My Computer”, the screen pops up “computer management”, press “Device Manager” in it, then press “graphics Card” in it, make sure there is “Cordon sub-display” icon in it.



Step iii make sure there is “Cordon sub-display” display device
By then, the driver has been fully installed.

Run the driver

Operating instructions:

- 1)Long press “POWER” on the projector for 3 seconds to enter power on and enter the main menu.
- 2)Power adaptor must be DC5V/2A.
- 3)Connect the projector with PC by USB cable

LEFT	◀	S. p. Move the cursor left	S. p. Switch to the prev. Photo	S. p. Move the cursor up	S. p. Prev.	S. p. Prev. Page	S. p. Move the cursor up	-
	L. P.	-	L. P.	L. P.	-	L. P.	L. P. Setting point decreases	-
RIGHT	▶	S. p. Move the cursor right	S. p. Switch to the next. Photo	S. p. Move the cursor down	S. p. Next	S. p. next page	S. p. Move the cursor down	-
	L. P.	-	L. P.	L. P.	-	L. P.	L. P. Setting point decreases	-
ENTER	▶	S. p. confirm	S. p. -	S. p. Play/ pause	S. p. Play/ pause	S. p. Switch between Automatic page turning or manual page turning	S. p. confirm	-
	L. P.	-	L. P.	L. P.	-	L. P.	L. P.	-
POWER	⏻	L. P. Long Press for 3 seconds to power off	L. P. Long Press for 3 seconds to power off	L. P. Long Press for 3 seconds to power off	L. P. Long Press for 3 seconds to power off	L. P. Long Press for 3 seconds to power off	L. P. Long Press for 3 seconds to power off	-
	L. P.	-	L. P.	L. P.	-	L. P.	L. P.	-

Prompt:if system halts suddenly by accident means, press the Reset device (as shown in Figure 1) with something hard to resume to normal work.

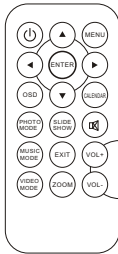


Figure II Remote Control

iii、The Overview of Remote Control

POWER	power on/off
UP	move the cursor up
DOWN	move the cursor down
LEFT	move the cursor left
RIGHT	move the cursor right
ENTER	play/pause/confirm
SETUP(OSD)	basic function setup
MUTE	voice on/off
CALENDAR	undefined
PHOTO	photo mode
SLIDESHOW	slideshow mode
MUSIC	music mode
MOVIE	video mode
EXIT	exit, back to prev. Screen in turn
ZOOM	enlarge photos under Photo Browse mode. But invalid under SLIDESHOW
VOL+ VOL-	volume control
MENU	undefined

Note: After power off by remote control, if the projector is not plugged with AC adaptor., only press “POWER” on the projector can power on it again.



Figure IX USB connect with PC

- 5) Select “USB Connect PC” then press “ENTER” to start operation.
- 6) After operation, press USB device icon in the bottom right hand corner to exit USB connection.

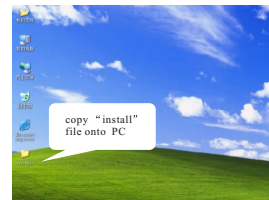
● USB SUB Display:

Projection Synchronizes with PC Screen
Projection of the projector synchronizes with PC screen by USB cable and corresponding drivers.

Driver installation

Please firstly install the attached disk in the accessories or driver attached in the projector on PC according to the following steps

- 1) Copy the whole “INSTALL” file in the attached disk on the desktop or other storage device of your PC



Step i Copy files

- 1) Language:set language
- 2) Brightness:set brightness
- 3) Contrast:set contrast
- 4) Saturation:set saturation
- 5) Hue:set hue
- 6) Gamma:set gamma
- 7) Volume:set volume
- 8) Reset default setting:reset default setting
- 9) Version:display current software version

Download Media Files from PC

Projector supports data transmission from PC through USB 1.1/2.0

Note: This projector is precision photoelectronic products, to protect it from damage caused by error operating, great care should be taken while operating.

USB HOST

The projector can be used as a mobile device, it is built with NAND FLASH to store photos, music and video files.

Operating instruction:

- 1) Long press "POWER" on the projector for 3 seconds to enter the main menu.
- 2) Power adaptor must be DC5V/2A.
- 3) Connect the projector with PC by USB cable attached in the accessories, insert one end to PC and the other to projector's USB port.
- 4) After confirm, the screen displays the following two options, as shown in Figure IX:

Basic Operation

1、 Power on

- 1) Long press "POWER" on the projector for 3 seconds, the screen will show main menu. If the built-in battery is too weak to power on, recharge the battery before power on, or power on while on charge. Boot screen:



Figure III Main Menu

- 2) Press MENU on the projector or EXIT on the remote control to switch icons between storage device (such as NAND, SD) and function (such as PHOTO, MOVIE, MUSIC), then press LEFT or RIGHT to select corresponding icon and start playing.
- ##### 2、 Photo mode
- 1) After power on, press "PHOTO" icon on the main menu, then press "ENTER" on the projector or directly press "PHOTO MODE" on the remote control to enter photo mode.
 - 2) Under Photo Mode, press "LEFT" or "RIGHT" to select photo.
 - 3) Press "MENU" on the projector or "EXIT" on the remote control to return to prev. screen in turn.
 - 4) Press "VOL" on the projector or "VOL+", "VOL-" on the remote control to adjust the volume (under SLIDE SHOW mode)

3、 Video mode

- 1) After power on, press “MOVIE” icon on the main menu, then press “ENTER” on the projector or directly press “VIDEO MODE” on the remote control to enter video mode.
- 2) Under video mode, press “LEFT”, “RIGHT” to select video files.
- 3) Press “MENU” on the projector or “EXIT” on the remote control to return to prev. screen in turn.
- 4) Press “VOL” on the projector or “VOL+, VOL-” on the remote control to adjust the volume.

4. Music mode

- 1) After power on, press “MUSIC” icon on the main menu, then press “ENTER” on the projector or directly press “MUSIC MODE” on the remote control to enter music mode.
- 2) Under music mode, press “LEFT, RIGHT” to select music chapter, then press “ENTER” to play.
- 3) Press “MENU” on the projector or “EXIT” on the remote control to return to the prev. screen in turn.
- 4) Press “VOL” on the projector or “VOL+, VOL-” on the remote control to adjust the volume.

5. File management

- 1) After power on, press “FILES” icon on the main menu, then press “ENTER” on the projector to enter file management mode.
- 2) Under file management mode, press “LEFT” or “RIGHT” to select file, then long press “ENTER” to edit the selected file such as copying or deleting

Note: Under file list screen, pressing “LEFT” on the remote control can also editing file.

A: select “copying to internal” to copy files from SD/MMC card to NAND FLASH.

- Rock: rock mode
- Soft: soft mode
- Jazz: jazz mode
- DBB: DBB mode

2) Auto Play: set music auto play

● On: Press “Music” on the main menu, then press “ENTER” to start music auto play

Off: Press “Music” on the main menu, then press “ENTER”, it will show list of music file on the screen, select one file and press “ENTER” to start playing the selected file.,

5. System Setup

Press “System Setup” icon of the “Start Up Setting”, then press “ENTER” to enter System Setup screen, as shown in Figure VIII
Operating instruction: Short Press “LEFT” or “RIGHT” to select setting options by moving cursor up and down, then long press “LEFT” or “RIGHT” to change parameters of the selected option.



Figure VIII System Setup Screen

2) Play Mode: set video repeat mode

- Once: only play for once, after playing, return to video file list

- Repeat: repeat all video files

3) Auto Play: set auto play on/off

- On : select “VIDEO” on the main menu, then press “ENTER” to enter video auto play mode.

- Off : select “VIDEO” on the main menu, then press “ENTER” , it will show list of video file on the screen, select one file and press “ENTER” to start playing the selected file. ,

3. Music Setup

Press “Music Setup” icon of the “Start Up Setting” , then press “ENTER” to enter Music Setup screen, as shown in Figure VII:

Operating instruction: Short Press “LEFT” or “RIGHT” to select setting options by moving cursor up and down, then long press “LEFT” or “RIGHT” to change parameters of the selected option.



Figure VII Music Setup Screen

1) Play Mode: Set music repeat mode

- Repeat Once: only play for once, after playing, return to video file list

- Repeat: repeat all music files

- Music Effect: set music effect

- Normal: normal mode

- Pop: pop mode

- Classic: classic mode

B: select “delete files” to delete files from SD/ MMC card or from NAND FLASH.

3) Press “MENU” on the projector or “EXIT” on the remote control to return to the prev. screen in turn.

Note: files cannot be copied from NAND FLASH to SD/MMC card.

6. Ebook reading

1) After power on, press “Ebook” icon on the main menu, then press “ENTER” on the projector or directly press “Ebook” on the remote control to enter calendar mode.

2) Under calendar mode, press “LEFT” or “RIGHT” to move to the prev. or next pages.

3) Press “ENTER” to switch between automatic page turning or manual page turning .

4) Press “DOWN/VOL” to set automatic page turning intervals.

5) Press “MENU” on the projector or “EXIT” on the remote control to return to prev. Screen in turn.

System Setup

After power on, press “SETUP” icon on the main menu, then press “ENTER” on the projector or directly press “SETUP” on the remote control to enter system setup, as shown in Figure IV:



Figure IV: Main Menu Setup.

- 1). Photo Setup
- 2). Calendar Setup
- 3). Video Setup
- 4). Music Setup
- 5). System Setup

Operating Instruction: Press “LEFT” or “RIGHT” to select sub-options, then press “ENTER” to enter detailed settings. Press “MENU” on the projector or “EXIT” on the remote control to return to the main menu.

1、Photo Setup

Press “Photo Setup” icon of the “ Start Up Setting” , then press “ENTER” to enter Photo Setup screen., as shown in Figure V:

Operating instruction:Short Press “LEFT” or “RIGHT” to select setting options, then long press “LEFT” or “RIGHT” to change parameters of the selected option.



Figure V Photo Setup Screen

1)Display Mode:

- Slideshow:Auto start the photo slideshow.
- Thumbnail:enter nine thumbnail photos preview mode,select any thumbnail photo to start playing
- Browse Mode: manual preview mode

2)Display Ratio: photo is centered between margins.

- Full Screen: photo is displayed in full screen

- Fit to Screen: photo is displayed to fit the screen.
- Crop to Fill: photo is displayed in its original size

3)Slideshow Duration: set intervals between slideshow photos

4)Slideshow Repeat: set photo repeat mode

- Repeat: repeat mode

- Once: only play for once

5)Slideshow Effect: set photo slideshow display mode

- There are altogether 11 sildeshow display modes.

6)Clock: clock on/off under slideshow mode.

2、Video Setup

Press “Video Setup” icon of the “ Start Up Setting” , then press “ENTER” to enter Video Setup screen, as shown in Figure VI:Operating instruction:Short Press “LEFT” or “RIGHT” to select setting options by moving cursor up and down, then long press “LEFT” or “RIGHT” to change parameters of the selected option.



Figure VI Video Setup Screen.

1)Display Mode:

- Full Screen: display video in full screen
- Original Size:display video in its original size.