



DURABOOK

U12C
User's Manual

Table of Contents

COPYRIGHT.....	4
REGULATORY STATEMENT.....	4
<i>Federal Communications Commission Statement</i>	4
<i>Declaration of Conformity</i>	4
<i>RF exposure warning</i>	5
<i>European Notice</i>	5
<i>R&TTE (CE) MANUAL REGULATORY REQUIREMENT (WLAN - IEEE 802.11b/g)</i>	5
<i>Canadian Department of Communications</i>	6
<i>Battery Disposal</i>	6
<i>CLASS 1 LASER PRODUCT</i>	6
SAFETY INSTRUCTIONS	7
BEFORE YOU START	9
PACKAGE CONTENTS	9
FEATURES	10
COMPONENTS	11
<i>Front View</i>	11
<i>Left View</i>	13
<i>Right View</i>	13
<i>Back View</i>	14
<i>Bottom View</i>	15
<i>Status Indicators</i>	16
GETTING STARTED	17
POWERING UP YOUR NOTEBOOK	17
<i>Connecting the AC Adapter</i>	17
<i>Using Battery Power</i>	17
INSTALLING THE BATTERY	18
<i>Charging the Battery</i>	18
<i>Checking the Battery Level</i>	18
<i>Removing the Battery</i>	19
STARTING YOUR NOTEBOOK	19
<i>Using the Display Panel</i>	19
<i>Turning On Your Notebook</i>	20
<i>Adjusting the LCD Panel Brightness</i>	20
<i>Changing the Display Orientation</i>	21
<i>Shutting Down Your Notebook</i>	21
USING THE KEYBOARD	22
USING THE TOUCH PAD.....	23
USING THE STYLUS	24
<i>Calibrate the Screen</i>	24
USING THE QUICK MENU	25

USING THE MEMORY CARDS	26
<i>Inserting a Memory Card</i>	26
<i>Removing a Memory Card</i>	26
USING THE 3G ANTENNAS	27
MAKING CONNECTIONS	28
CONNECTING EXTERNAL DISPLAY DEVICES	28
<i>Connecting a Projector or Display Monitor</i>	28
<i>Connecting a TV</i>	28
CONNECTING USB DEVICES	29
CONNECTING HEADPHONES	30
CONNECTING EXTERNAL MICROPHONE	30
CONNECTING TO A LOCAL AREA NETWORK (LAN)	31
CONNECTING AN EXTERNAL SATA HDD	31
CONNECTING TO WIRELESS CONNECTIONS	32
<i>Connecting to a Wireless Local Area Network</i>	32
<i>Connecting to a Bluetooth Device</i>	33
POWER MANAGEMENT	34
USING THE POWER PLAN	34
USING THE POWER SAVING MODE	35
USING THE BIOS SETUP UTILITY	36
BIOS SETUP MENU	36
STARTING THE BIOS SETUP UTILITY	36
NAVIGATING AND ENTERING INFORMATION IN BIOS	36
MAIN MENU	37
ADVANCED MENU	37
BOOT MENU	38
SECURITY MENU	38
SAVE & EXIT MENU	39
DURABOOK DATAGUARD SOFTWARE	40
USING DURABOOK DATAGUARD	40
<i>Creating New Tasks</i>	44
<i>Running the Mirror Backup</i>	45
<i>Deleting Tasks</i>	45
<i>Using Tools</i>	47
TROUBLESHOOTING	48
SPECIFICATIONS	49

Copyright

Copyright© 2010. All rights reserved.

No part of this user manual may be transmitted, stored in a retrieval system, or translated into any language or computer language, in any form or by any means, without the prior written permission of the manufacturer. Information is subject to change without prior notice.

Regulatory Statement

Federal Communications Commission Statement

This equipment has been tested and found to comply with the limits for a Class B digital device, pursuant to Part 15 of the FCC Rules. These limits are designed to provide reasonable protection against harmful interference in a residential installation. This equipment generates, uses, and can radiate radio frequency energy and, if not installed and used in accordance with the instructions, may cause harmful interference to radio communications. However, there is no guarantee that interference will not occur in a particular installation. If this equipment does cause harmful interference to radio or television reception, which can be determined by turning the equipment off and on, the user is encouraged to try to correct the interference by one or more of the following measures:

- Reorient or relocate the receiving antenna.
- Increase the separation between the equipment and the receiver.
- Connect the equipment into an outlet on a circuit different from that to which the receiver is connected.
- Consult the dealer or an experienced radio/TV technician for help.
Shielded interconnect cables and shielded AC power cable must be employed

with this equipment to insure compliance with the pertinent RF emission limits governing this device. Changes or modifications not expressly approved by the system's manufacturer could void the user's authority to operate the equipment.

Declaration of Conformity

This device complies with part 15 of the FCC rules. Operation is subject to the following conditions:

- This device may not cause harmful interference
- This device must accept any interference received, including interference that may cause undesired operation.

RF exposure warning

This equipment must be installed and operated in accordance with provided instructions and must not be co-located or operating in conjunction with any other antenna or transmitter. End-users and installers must be provided with antenna installation instructions and transmitter operating conditions for satisfying RF exposure compliance.

SAR Value: 0.150 W/kg

European Notice

Products with the CE Marking comply with both the EMC Directive (89/336/EEC) and the Low Voltage Directive (73/23/EEC) issued by the Commission of the European Community.

Compliance with these directives implies conformity to the following European Norms:

- **EN 55022** (CISPR 22) Radio Frequency Interference
- **EN 55024** (EN61000-4-2, EN61000-4-3, EN61000-4-4, EN61000-4-5, EN61000-4-6, EN61000-4-8, EN61000-4-11, EN61000-3-2, EN61000-3-3)
Generic Immunity Standard
- **EN 60950-1** (IEC 60950-1) Product Safety

R&TTE (CE) MANUAL REGULATORY REQUIREMENT (WLAN - IEEE 802.11b/g)

802.11b Restrictions:

- European standards dictate maximum radiated transmit power of 100mW EIRP and frequency range 2.400-2.4835GHz.
- In France, the equipment must be restricted to the 2.4465-2.4835GHz frequency range and must be restricted to indoor use.

CE Declaration of Conformity

CE!

Is herewith confirmed to comply with the requirements set out in the Council Directive on the Approximation of the Laws of the Member States relating to Electromagnetic Compatibility (89/336/EEC), Low-voltage Directive (73/23/EEC) and the Amendment Directive (93/68/EEC), the procedures given in European Council Directive 99/5/EC and 89/336/EEC.

The equipment was passed. The test was performed according to the following European standards.

- EN 300 328 V1.7.1 (2006-05)
- EN 301 489-1 V.1.4.1 (2005-09) / EN 301 489-17 V.1.2.1 (2002-04)
- EN 60950-1:2006

Canadian Department of Communications

This class B digital apparatus meets all requirements of the Canadian Interference-causing Equipment Regulations.

Battery Disposal

THIS PRODUCT CONTAINS A LITHIUM-ION OR NICKEL-METAL HYDRIDE BATTERY. IT MUST BE DISPOSED OF PROPERLY. CONTACT LOCAL ENVIRONMENTAL AGENCIES FOR INFORMATION ON RECYCLING AND DISPOSAL PLANS IN YOUR AREA.

CLASS 1 LASER PRODUCT

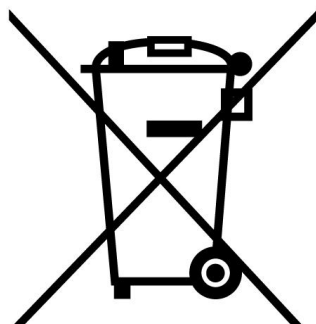
LASERSCHUTZKLASSE 1 PRODUKT TO EN60825

CAUTION: THIS APPLIANCE CONTAINS A LASER SYSTEM AND IS CLASSIFIED AS A "CLASS 1 LASER PRODUCT." TO USE THIS MODEL PROPERLY, READ THE INSTRUCTION MANUAL CAREFULLY AND KEEP THIS MANUAL FOR FUTURE REFERENCE. IN CASE OF ANY TROUBLE WITH THIS MODEL, PLEASE CONTACT YOUR NEAREST "AUTHORIZED SERVICE STATION." TO PREVENT DIRECT EXPOSURE TO THE LASER BEAM, DO NOT TRY TO OPEN THIS ENCLOSURE.

ANNEX IV

Symbol for the marking of electrical and electronic equipment

The symbol indicating separate collection for electrical and electronic equipment consists of the crossed-out wheeled bin, as shown below. The symbol must be printed visibly, legibly and indelibly.



Safety Instructions



DO NOT block the opening vents provided for ventilation. Blocking these vents may cause the notebook processor to overheat.



Always keep strong magnetic or electrical objects away from your notebook.



DO NOT use or store your notebook in extreme temperatures.



DO NOT place your notebook near fire or other sources of heat.



DO NOT expose to dust or corrosive materials.



DO NOT tamper the battery. Keep it away from children.



Never pick up or hold your notebook by the display.



DO NOT expose your notebook to sudden changes in temperature or humidity. Keep your notebook away from air conditioners or heating vents.



DO NOT attempt to service your notebook yourself. Any attempt to do so will make the warranty invalid. When servicing, refer to qualified service personnel.



For better environmental protection, waste batteries should be collected separately for recycling or special disposal.



CAUTION FOR ADAPTER

THIS NOTEBOOK IS FOR USE WITH DEDICATED AC ADAPTER.

BATTERY SAFETY

DANGER OF EXPLOSION IF BATTERY IS INCORRECTLY REPLACED. REPLACE ONLY WITH THE SAME OR EQUIVALENT TYPE RECOMMENDED BY THE MANUFACTURER. DISPOSE OF USED BATTERIES ACCORDING TO THE MANUFACTURER'S INSTRUCTIONS.

Before You Start

Congratulations on your purchase of this notebook.

This business notebook is portable and suits a wide-range of user requirements, providing users with maximum computing experience. Before you begin using your notebook, read this chapter to familiarize yourself with the main components installed in the system.

Package Contents

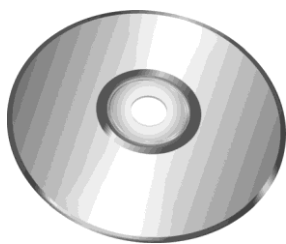
The following items come with your package. If any of them is damaged or missing, please contact your retailer.



Notebook



Power adapter



Utility DVD



Power cord



NOTE

- The pictures are for reference only, actual items may slightly differ.

Features

- Intel HM55 platform
- Operating system supports Microsoft® Windows 7
- 12.1" convertible LCD display
- High capacity hard disk drive
- Light weight
- Spill Proof
- Intel WLAN capability
- Bluetooth connectivity
- WWAN
- Express card slot
- Optional Solid State Primary Drive (SSD)
- Optional Gobi™ 2000 3G and GPS

Components

Front View

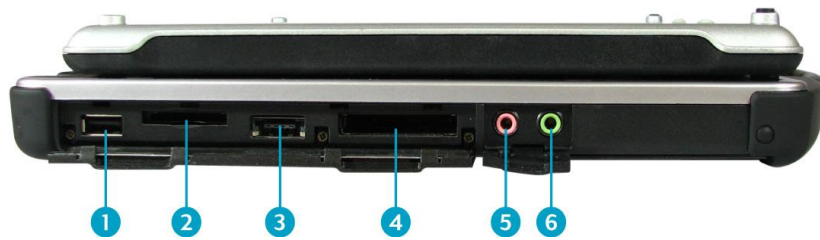


No.	Item	Description
1	Camera	Use to take picture, record videos, or video conference.
2	Display panel	Provides visual output.
3	Fingerprint scanner	Scans fingerprints for biometric identification.

Before You Start

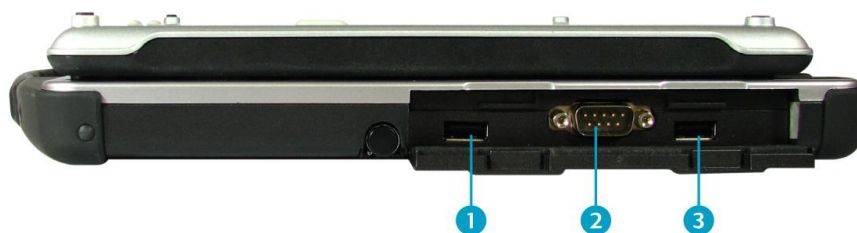
No.	Item	Description
4	Brightness control button	Press to increase the LCD panel brightness by one level.
5	Brightness control button	Press to decrease the LCD panel brightness by one level.
6	SAS button	Press to exit Windows and switch to Standby mode.
7	Power button	Press to turn your notebook on or off.
8	Quick menu button	Press to access the quick menu.
9	LCD direction button	Press to rotate the screen orientation.
10	Program button	Press to start playback of chosen program.
11	Stealth mode button	Press to disable all emitting lights and sound.
12	Status Indicators (Power, Wireless, HDD, Caps Lock, Num lock, Battery)	Indicates the corresponding function status.
13	Keyboard	Press the keys to input information.
14	Touch pad	Use to point, select, drag, or scroll objects on the screen.
15	Touch pad button	Press to select objects or display a shortcut menu.
16	Chassis latch	Locks the notebook chassis.
17	Handle	Use for carrying the notebook around on-the-go.

Left View



No.	Item	Description
1	USB port	Connects USB peripheral devices.
2	Card reader	Use to insert memory cards to transfer pictures, music, and data between your notebook and flash compatible devices. The card reader supports SD (Secure Digital), SDHC, Mini-SD (with adapter), cards.
3	eSATA/USB Combo port	Connects an external hard disc drive using an eSATA cable for faster data transfer, or a USB cable for USB peripheral devices.
4	ExpressCard slot and PC Card slot	Use to insert one 34/54 ExpressCard or Type II PC Card.
5	Microphone jack	Connects an external microphone.
6	Headphone jack	Connects headphones or external speakers.

Right View



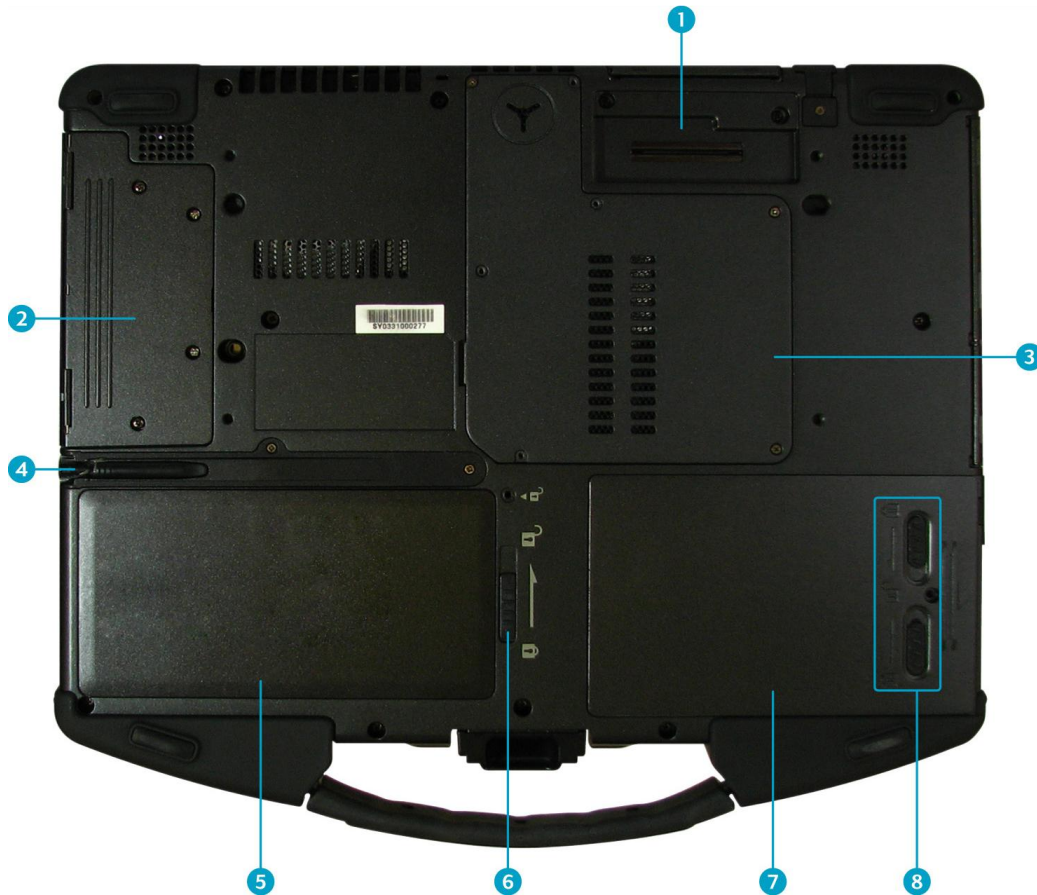
No.	Item	Description
1	USB port	Connects USB peripheral devices.
2	Serial port (RS232)	Connects a peripheral device, such as a printer or other device with serial port.
3	USB port	Connects USB peripheral devices.

Back View



No.	Item	Description
1	Kensington lock slot	Connects to a Kensington-compatible notebook security lock.
2	VGA port	Connects to a display device. (e.g. external monitor, LCD projector).
3	LAN (RJ-45) port	Connects to a local area network (LAN) using an Ethernet cable.
4	DC-in jack	Connects the power adapter.

Bottom View



No.	Item	Description
1	Docking station port*	Connects the notebook to a docking station.
2	Modular I/O port bays	Use for user changeable modular I/O bay to accommodate various devices applications.
3	Cooling vents	Use for air convection. Do not cover the cooling vents to protect your notebook from overheating.
4	Stylus	Use for accurate control input to the LCD touch panel and digitizer.
5	Battery compartment	Contains the battery.
6	Battery latch	Locks the battery in place.
7	Hard disk drive (HDD) compartment	Contains the hard disk drive.
8	HDD latches	Locks the HDD in place.



**Docking station port function might not work on your system. Please check with your dealer for more details.*

Before You Start

Status Indicators

The status indicators in the upper left corner of the keyboard light up when a particular function of the notebook is active. Each indicator is marked with a symbol.



Icon	Item	Description
	Power indicator	The LED always lights on (blue) when the system is running. When the system is in sleep mode, the LED will blink.
	WLAN	Indicates the status of wireless LAN communication.
	HDD	A blinking HDD LED indicates HDD activity (data is being read or written).
	Num Lock	Lights on when Num Lock is activated.
	Caps Lock	Lights on when Caps Lock is activated.
	Battery	Indicates the battery status: <ul style="list-style-type: none">• Green light means the battery is fully charged.• Orange light means the battery is being charged.• Blinking red light means the battery power is low.

Getting Started

This chapter will guide you on how to use your notebook.

Powering Up Your Notebook

Your notebook can be powered up using the AC adapter or the Lithium-ion battery.

Connecting the AC Adapter

The AC adapter powers up your notebook and charges the battery.



1. Connect the AC adapter to the DC-in jack of your notebook.
2. Connect the AC adapter to the power cord.
3. Plug the power cord to an electrical outlet.

Using Battery Power

1. Install a charged battery in the battery compartment.
2. Remove the AC adapter (if plugged). Your notebook will automatically use the battery power.



NOTE

- If your notebook is connected to an electrical outlet and the battery is installed, your notebook uses power from the electrical outlet.

Installing the Battery

To install the battery, follow the steps below:

1. Slide and hold the battery latch to the unlock position.
2. Align and insert the battery to the battery compartment.
3. Push completely until the battery locks into place.
4. Release the latch to the lock position to secure the battery.



Charging the Battery

The Lithium-ion battery is not fully-charged upon purchase.

To charge the battery, follow the steps below:

1. Install the battery to your notebook. See procedures above.
2. Connect the AC adapter to the DC-in jack of your notebook.
3. Connect the AC adapter to the power cord.
4. Plug the power cord to an electrical outlet.



NOTE

- The charging time may be longer if you are using your notebook while charging the battery.

CAUTION

- DO NOT charge the battery if the temperature is below 0°C or higher than 50°C.
- Use only the supplied AC adapter. Using other AC adapters may damage the battery or your notebook.

Checking the Battery Level

The Battery LED flashes red when the battery is nearly depleted.

When this happens, save your work and plug the AC adapter to charge the battery or replace the battery with a fully charged one.



NOTE

- Make sure the system has shut down before you change the battery.

Removing the Battery

To remove the battery, follow the steps below:

1. Slide and hold the battery latch to the unlock position.



2. Remove the battery out of the battery compartment.



Starting Your Notebook

Using the Display Panel

- To open the display panel, unlock the chassis latch to open the notebook chassis. Lift the cover lid up to upright position.



- To adjust the LCD panel, twist the LCD panel according to your preference.




Getting Started

- To switch to tablet mode operation, twist the LCD panel 180°, then place it back on the notebook chassis. Lock the chassis latch to secure the LCD panel.

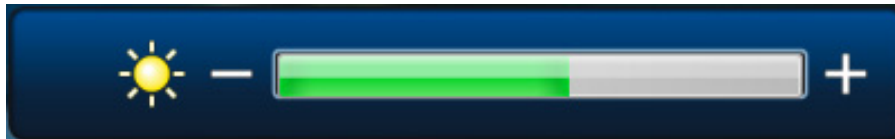




Turning On Your Notebook

Press the  button until the Power LED lights up.


Adjusting the LCD Panel Brightness

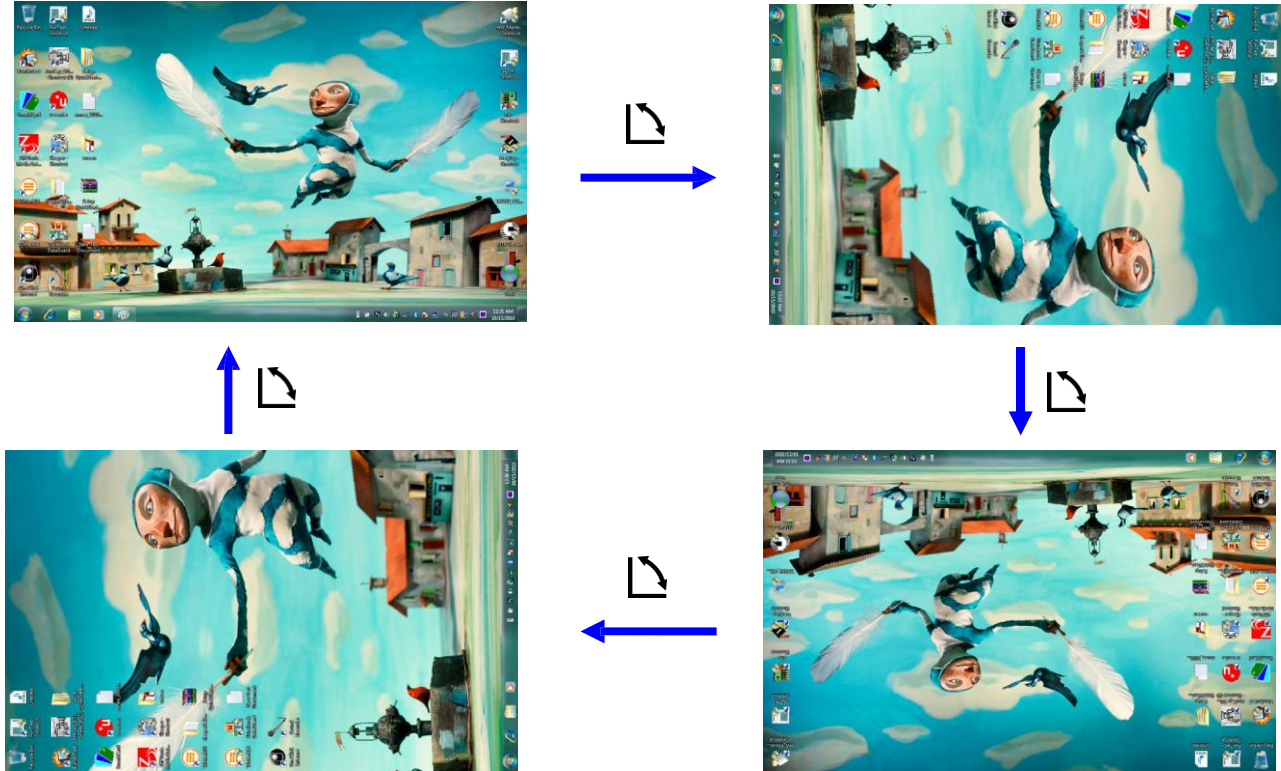
You can adjust the brightness by pressing the **Brightness control** buttons.



- To increase the brightness, press the  button.
- To decrease the brightness, press the  button.

Changing the Display Orientation

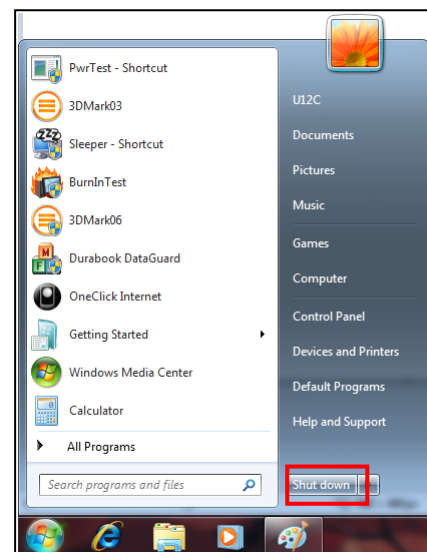
You can rotate the display orientation to suit your preference. Each press of the  button will rotate the display 90° clockwise.



Shutting Down Your Notebook

It is important to properly shut down your notebook to avoid the loss of unsaved data. To shut down your notebook, follow the steps below:

1. Click **Start**.
2. Click **Shut down**.
Wait for your notebook to turn off power completely before removing the power source (if necessary).



Using the Keyboard



No.	Keys	Description
1	Function keys	These function keys are used to perform designated tasks. The tasks for each key may vary from one application to another.
2	[Fn]	Press the [Fn] key in combination with other keys to execute a command.
	[Fn] + F3	Toggles the touch pad to on/off.
	[Fn] + F4	Switches to suspend mode.
	[Fn] + F5	Toggles between LCD, External display, or both.
	[Fn] + F8	Decreases the volume by one level.
	[Fn] + F9	Increases the volume by one level.
3	Windows key	Press to display the Start menu. This action is the same as clicking the Start icon.
4	Numeric keypad	Press the Num lock key to activate the numeric keypad. Press the keys on the numeric keypad to enter numbers or operands as you would on a calculator.
5	Application key	Press to display an application shortcut menu. This action is the same as right-clicking a mouse button.

Using the Touch Pad

The touch pad is a cursor-pointing device that provides all the features of a two-button mouse. Its primary function is to move the cursor around the screen. You can also point, select, or drag items or objects on the screen.



Point

Slide your finger on the touch pad to point the cursor to an item or object on the screen.

Click

To left-click, move the cursor to the item or object on the screen, then lightly tap the touch pad or press the left button.

To right-click, move the cursor to the item or object on the screen, then press the right button.

Double-click

To double-click, move the cursor to the item or object on the screen, then tap the touch pad twice or press the left button twice.

Drag

To drag an item or object, press and hold the left button then slide your finger on the touch pad to move the item or object.

Scroll

To scroll a page, press and hold the left button then slide your finger on the touch pad to scroll a page.

Using the Stylus

This notebook comes with an integrated stylus for accurate control input to the LCD touch panel and digitizer. You can use the stylus to point, select, or drag items or objects on the screen.



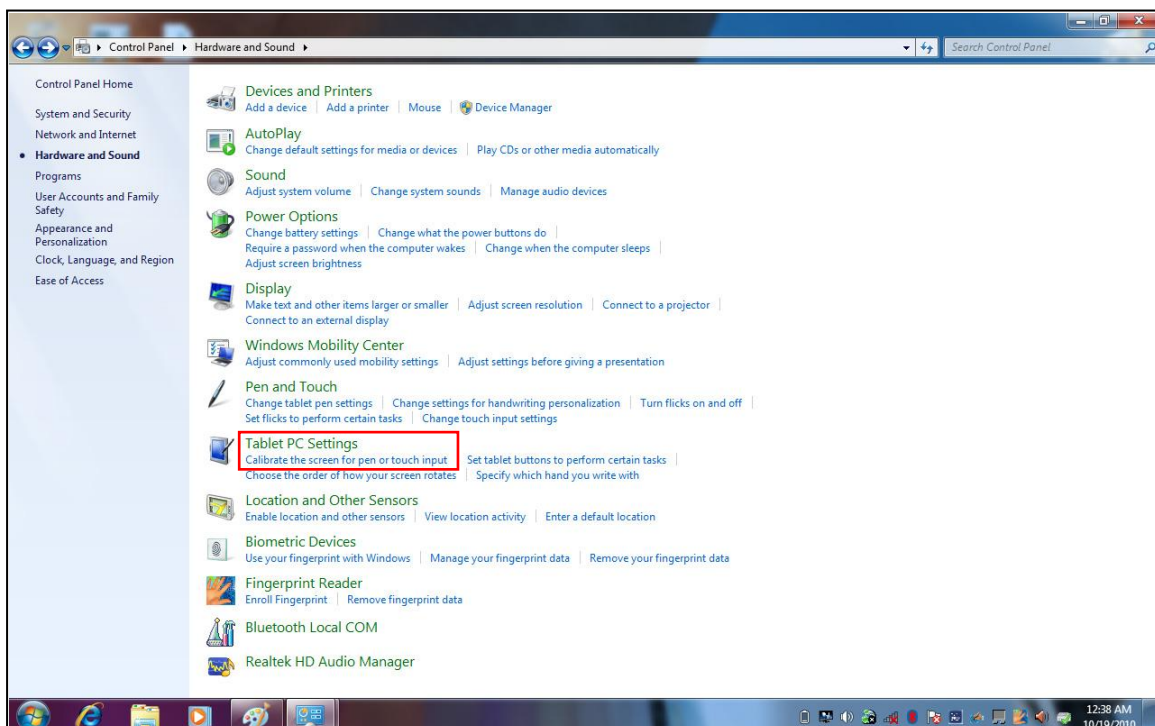
To use the stylus, simply remove it from the back of the notebook.



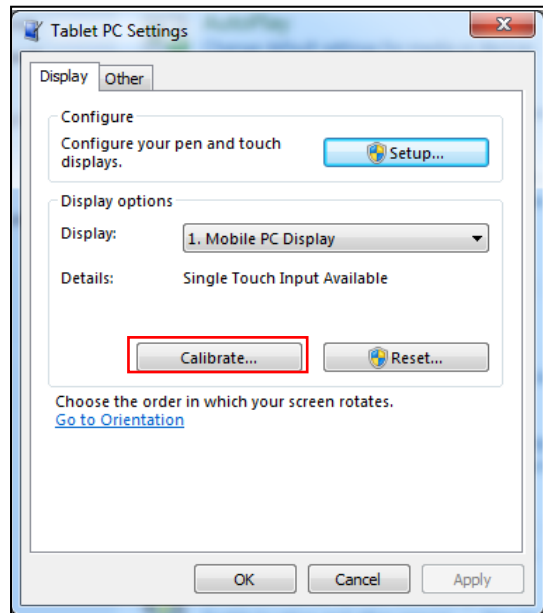
Calibrate the Screen

To ensure touch accuracy, calibrate the screen.


1. Click **Start > Control Panel**.
2. Select **Hardware and Sound > Calibrate the screen for pen or touch input**.



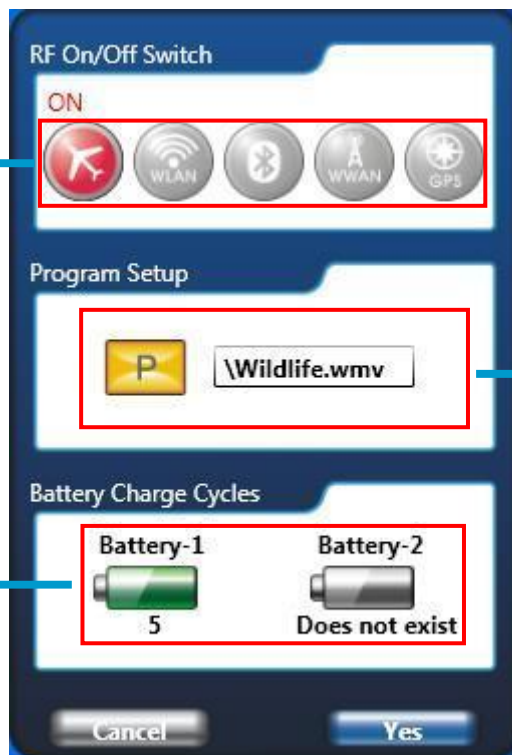
3. Click **Calibrate**.
4. Follow the on-screen instructions to complete screen calibration.




Using the Quick Menu

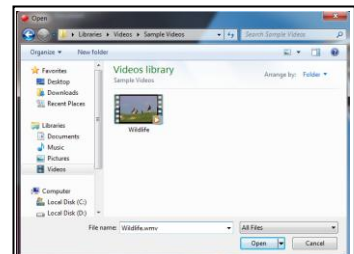
Press the  button to enter the Quick menu.

Click on the icon to enable the respective function including wireless network, Bluetooth, 3G, GPS, and airplane mode.



View the battery charge cycles.

Click the  icon to set up the media file for the program mode. Select the media file and click **Open**.



Using the Memory Cards

Your notebook supports different types of memory cards to provide faster data transfer. Supported types are as follows:

- SD card
- SDHC card
- Mini-SD card (with adapter)
- MS card (Memory Stick/PRO)
- MMC card
- Mini-MMC card (with adapter)

Inserting a Memory Card

With the label side up, push the memory card into the memory card slot until it clicks into place.



Removing a Memory Card

It is important to remove the memory card properly. Improper removal may cause the data in the memory card to be corrupted and your notebook to malfunction.

To properly remove the memory card, follow the steps below:

1. Click the removable disk icon on the system tray.
2. Click **Safely Remove Hardware and Eject Media**.



The system confirms that the device can be safely removed.

3. Push the memory card to eject it.
4. Pull the card out from the slot.

Using the 3G Antennas

Gobi™ 2000 3G and GPS is an optional module. In order to have better signal, the antennas suggest using angle as below:



CAUTION

- If the antennas turn to other angles, it may cause low signal.

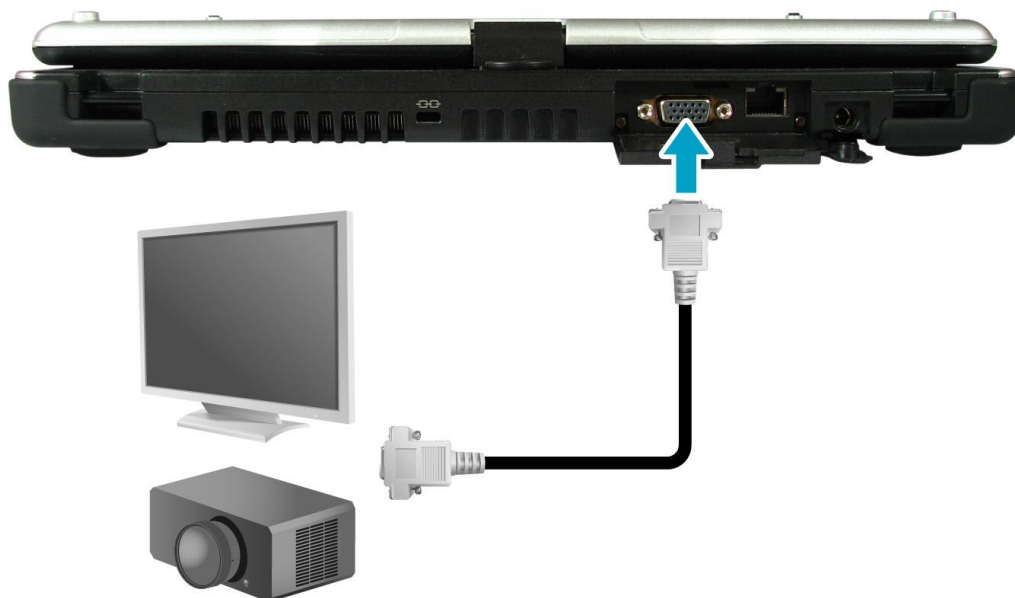
Making Connections

This chapter will guide you on installing peripheral devices to maximize the use of your notebook.

Connecting External Display Devices

You can connect your notebook to other display devices, such as a projector, another display monitor, or a TV.

Your notebook is equipped with a VGA port which provides both digital and analog video signals. VGA D-sub and HDMI interfaces use digital signals; VGA interface uses analog signals.



Connecting a Projector or Display Monitor

1. Connect one end of a VGA D-sub cable to the VGA port of your notebook.
2. Connect the other end to a projector or display monitor.

Connecting a TV

1. Connect a DVI-HDMI or DVI-VGA cable to the VGA port of your notebook.
2. Connect the cable to the adapter.
3. Connect the other end of the cable to the TV.



NOTE

- The VGA D-sub cable, DVI-HDMI, and DVI-VGA adapters are not included in the package. They are sold separately.

Connecting USB Devices

You can connect your notebook to other USB devices, such as a mouse, keyboard, digital camera, printer, or an external hard disk drive.



1. Connect one end of a USB cable to the USB port of your notebook.
2. Connect the other end to the USB device (if necessary).



NOTE

- The USB cable is not included in the package. It is sold separately or it may come with your USB device.

Connecting Headphones

You can connect your notebook to a headphone or external speakers. Plug the audio jack of the headphone or speakers to the Headphone jack of your notebook.

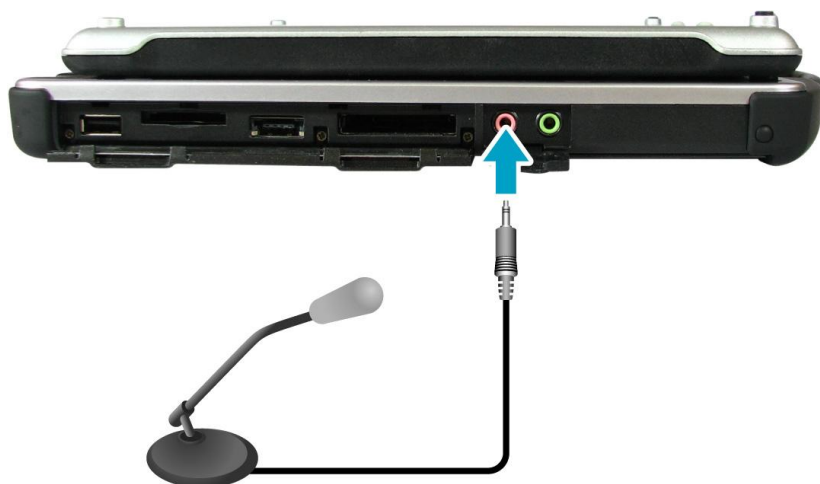


NOTE

- The headphone is not included in the package. It is sold separately.

Connecting External Microphone

You can connect your notebook to an external microphone. Plug the audio jack of the microphone to the Microphone jack of your notebook.

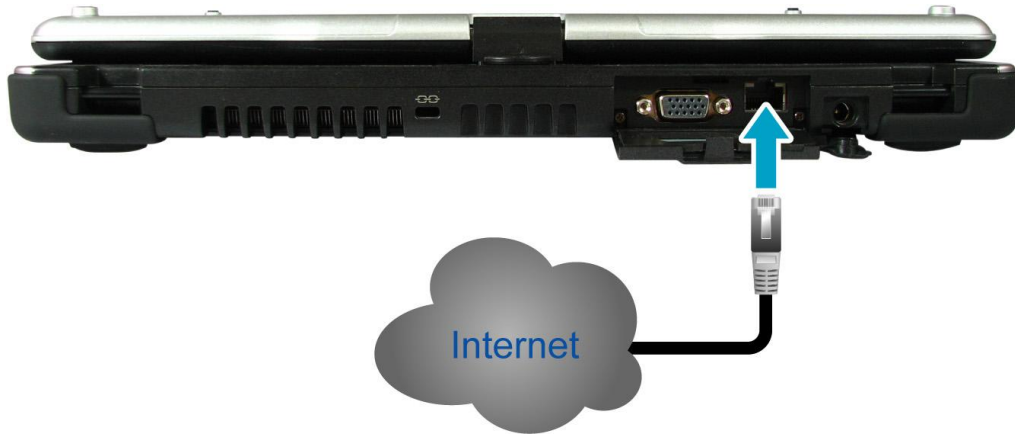


NOTE

- The microphone is not included in the package. It is sold separately.

Connecting to a Local Area Network (LAN)

You can connect your notebook to a local area network (LAN) using the RJ-45 LAN port.



1. Connect one end of an RJ-45 cable to the LAN port of your notebook.
2. Connect the other end to network hub or a wall socket.



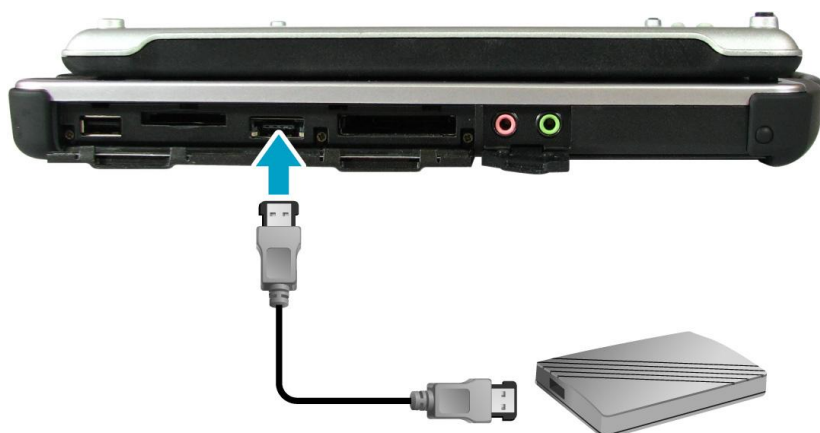
NOTE

- The RJ-45 cable is not included in the package. It is sold separately.

Connecting an External SATA HDD

You can connect your notebook to an external SATA device using the eSATA/USB combo port.

Connect the eSATA cable to the eSATA/USB combo port of your notebook.



Connecting to Wireless Connections


You can connect your notebook to a wireless local area network, WWAN, Bluetooth, or GPS.

Before using a wireless built-in device, you need to turn the respective built-in wireless functions on.

Connecting to a Wireless Local Area Network

Your notebook comes with a WLAN module. A wireless network can be added either when the network is detected or by manually entering the settings information.

To connect, follow the steps below:

1. Press the  button to open the Quick menu.
2. Click the WLAN icon to turn on the wireless network function, and click **Yes** to exit the Quick menu.




3. Click the wireless network icon on the system tray.
4. Available wireless network connections are displayed. Click the desired wireless network.
5. Click **Connect**.
Some networks require a network security key or a password.

 **TIPS**

- Check **Connect automatically** box to automatically connect to this network when it is available.

6. Enter the network security key.
7. Click **OK**.



8. After the connection is established, you can see the wireless icon () in the Notification area.



NOTE

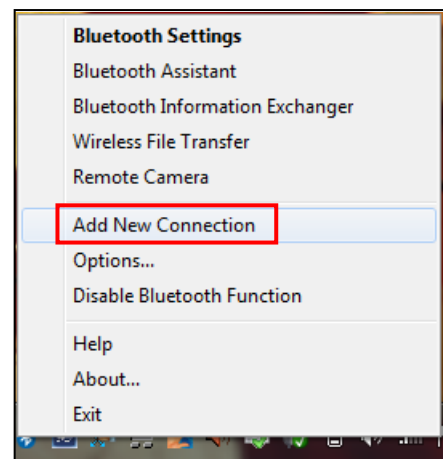
- Wi-Fi access requires service from a wireless service provider. Contact your service provider for more information.
- Actual wireless connectivity will depend on system configuration. Please contact your dealer for more information.

Connecting to a Bluetooth Device

Your notebook can connect and communicate with other Bluetooth-enabled devices.

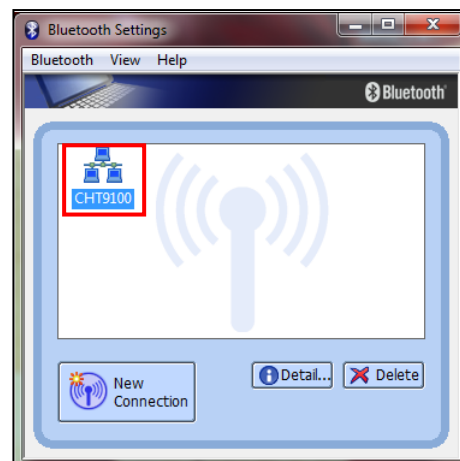
To add a device, follow the steps below:

1. Press the button to open the Quick menu.
2. Click the Bluetooth icon to turn on the Bluetooth function, and click **Yes** to exit the Quick menu.
3. Click the arrow on the system tray to display hidden icons.
4. Right-click the Bluetooth icon.
5. Click **Add New Connection**. The system starts scanning for Bluetooth devices and displays the available devices.
6. Click on a device, then click **Next**.

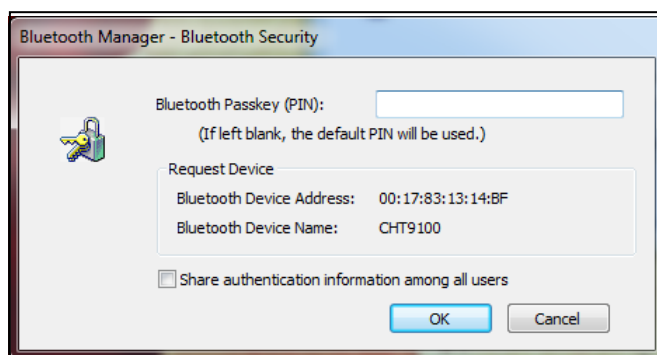


Making Connections

- The system displays the selected Bluetooth device. Double-click on the device icon to connect.



- Enter the passkey (PIN) to start pairing, and click **OK**.



NOTE

- The PIN you enter on the notebook must be the same PIN to be entered on the other Bluetooth device.
- Once a partnership has been created, connecting to that device again will no longer require entering the PIN.

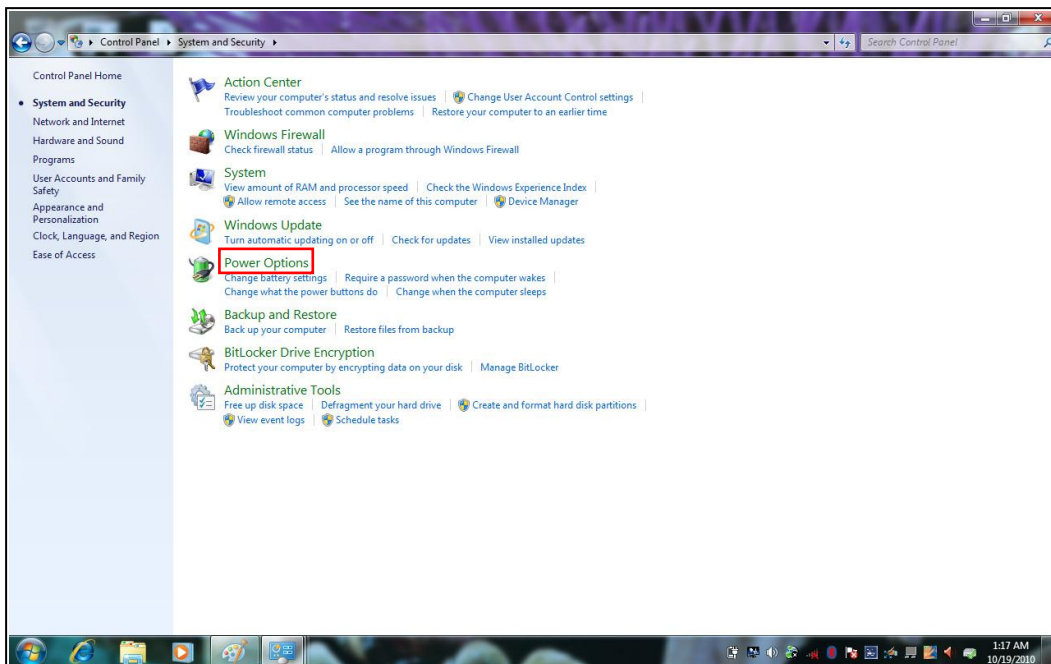
Power Management

This chapter will guide you on how to manage the system power.

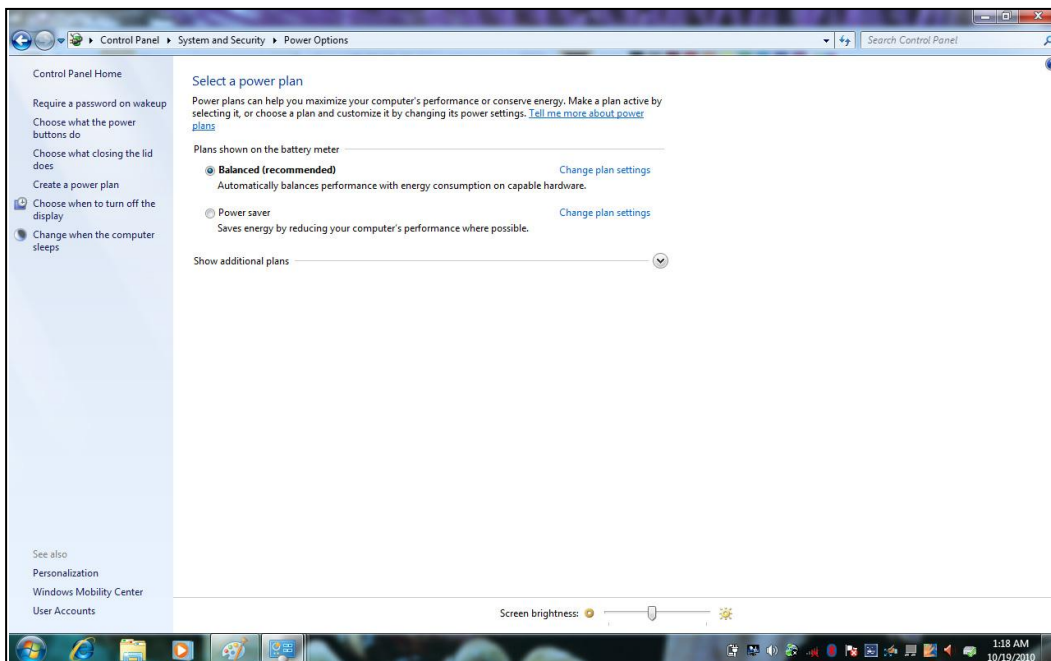
Using the Power Plan

To improve energy efficiency, you can use the power plan to reduce the amount of power your notebook uses, maximize the performance, or balance the two.

1. Click **Start > Control Panel**.
2. Select **System and Security > Power Options**.



3. Select a power plan.



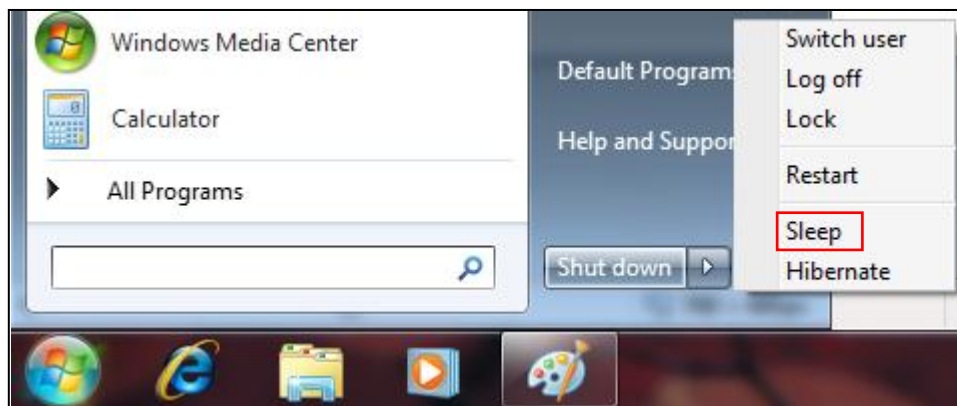
4. To adjust the selected power plan settings, click **Change plan settings**.

Using the Power Saving Mode


When you are not using the notebook, turn off the notebook or set the notebook to enter sleep mode.

To set the notebook to enter sleep mode, follow the steps below:

1. Click **Start**.
2. Click **Shut down > Sleep**.



To wake up the notebook from sleep mode, do one of the following:

- Press the  button.
- Press any key on the keyboard.

Using the BIOS Setup Utility

Your notebook has a BIOS setup utility which allows you to configure important system settings, including settings for various optional functions of the notebook. This chapter explains how to use the BIOS setup utility.

BIOS Setup Menu

The BIOS setup Utility allows you to configure your notebook basic settings. When you turn your notebook on, the system reads this information to initialize the hardware so that it can operate correctly. Use the BIOS setup utility to change your notebook start-up configuration. For example, you can change the security and power management routines of your system.

Starting the BIOS Setup Utility

You can only enter the BIOS setup utility as the notebook is booting, that is between the time you turn on the notebook and before the Windows interface appears. If your notebook is already on, shut down your notebook completely (power off) and restart it and then press the **Delete** key to enter the setup utility.

Navigating and Entering Information in BIOS

Use the following keys to move between fields and to enter information:

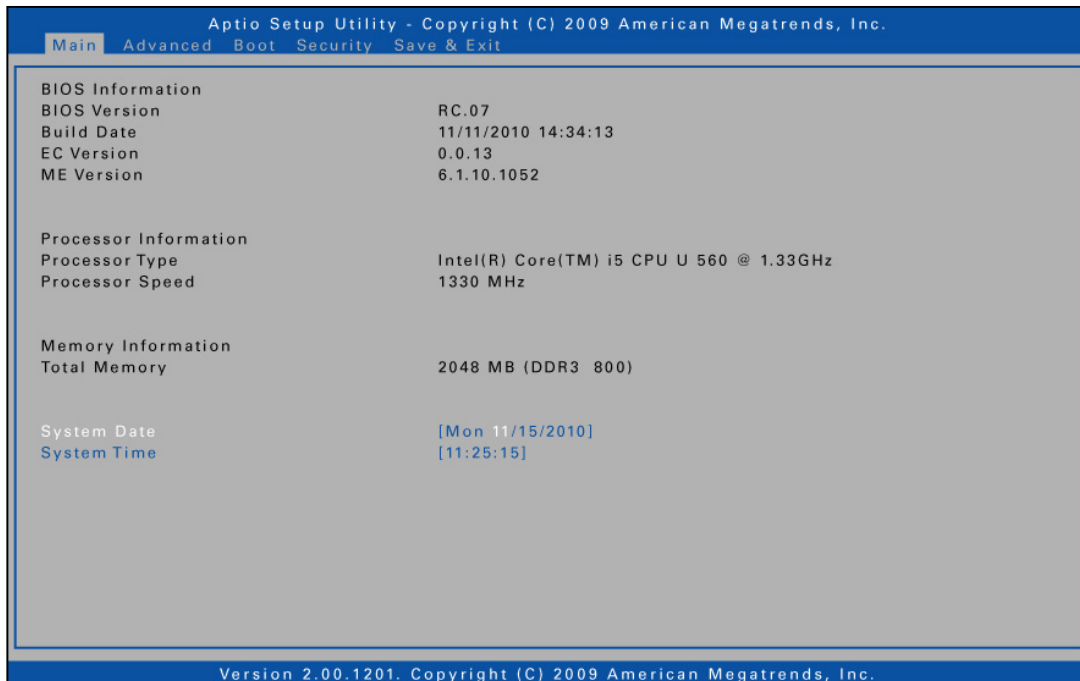
Function Key	Description
← →	Selects screen.
↓ ↑	Moves up/down to select items.
Enter	Confirms the selection and enters the selected menu screen.
+ / -	Changes an option for the selected items.
F1	Displays the Help screen.
F2	Invokes the previous values.
F3	Loads optimized default values.
F4	Saves the changes and exits Setup.
Esc	Press Esc to exit any section. If you wish to exit the BIOS utility without saving changes, go to the main menu, then press Esc .

Users are allowed to enter new values to replace the default settings in certain fields, and the rest of the fields are specified by system default parameters and

cannot be modified by users. Reverse the attribute of the main options and press **Enter** to enter into the submenu. Press **Esc** to return to the previous configuration page.

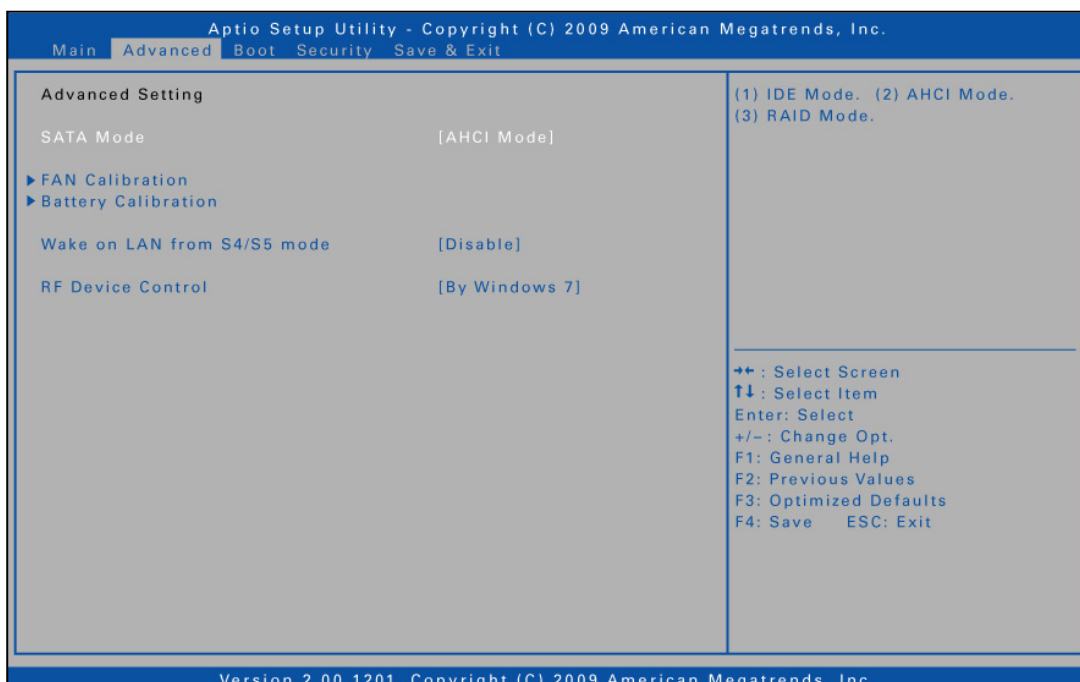
Main Menu

Display the system overview information about BIOS version, CPU features, and total memory size. You can also set the system date and time.



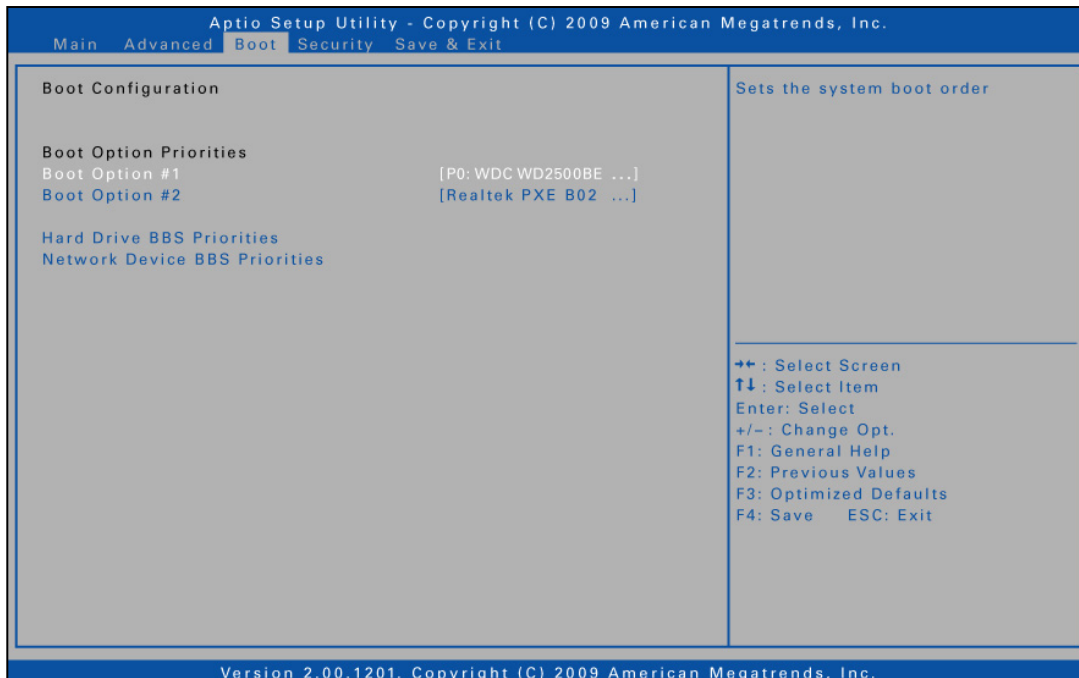
Advanced Menu

View and configure SATA mode, FAN calibration, battery calibration, wake up event, and RF device control settings.



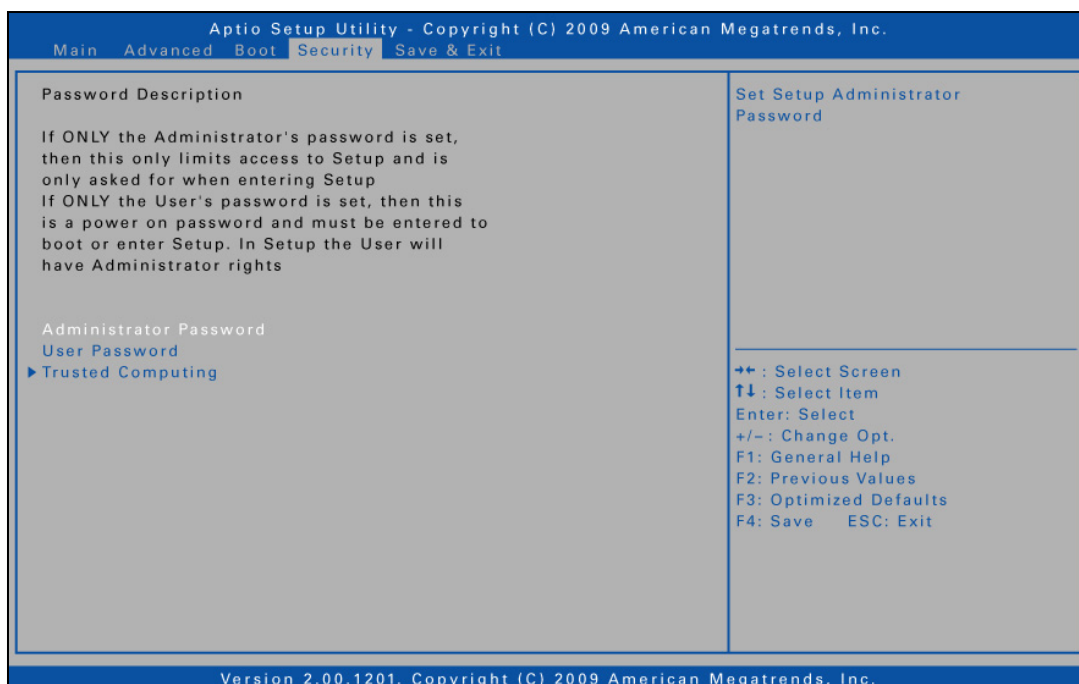
Boot Menu

Configure the boot type and boot sequence.



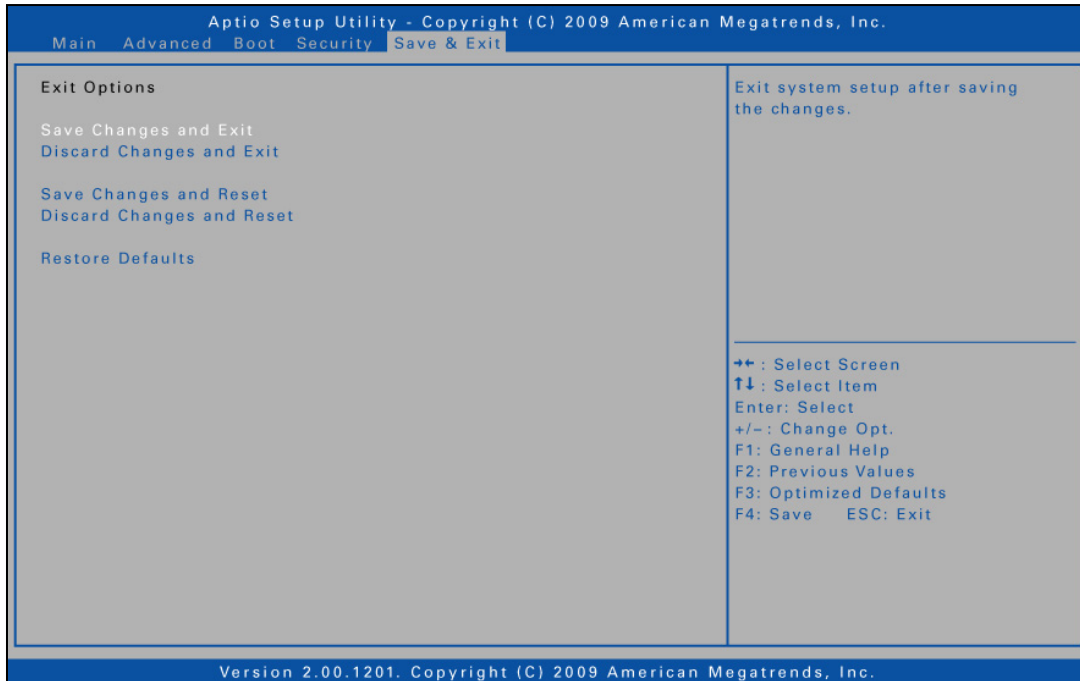
Security Menu

Set or change the Administrator and User passwords, and configure TPM settings.



Save & Exit Menu

Save or discard the changes, or restore the default values for all setup options before leaving the BIOS Setup Menu.



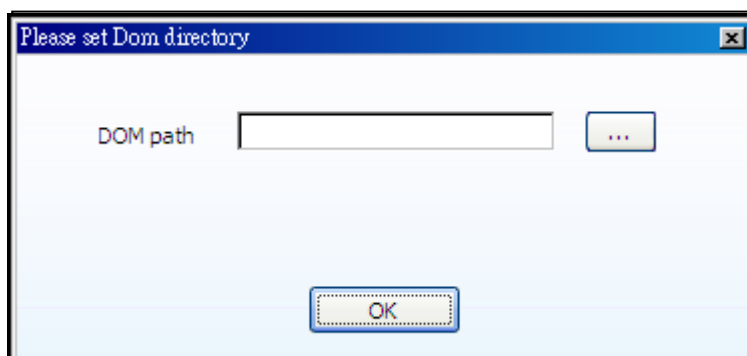
Durabook DataGuard Software

Your notebook supports Durabook DataGuard software that enables users to backup file(s) from the hard disk drive to the Disk on Module (DOM). With this software, users can do both automatic backup and mirror backup.


- **Automatic backup:** Synchronize the files users create or update and backup the files changed in HDD to DOM automatically.
- **Mirror backup:** Backup all the files within the task list from HDD to DOM.

Using Durabook DataGuard

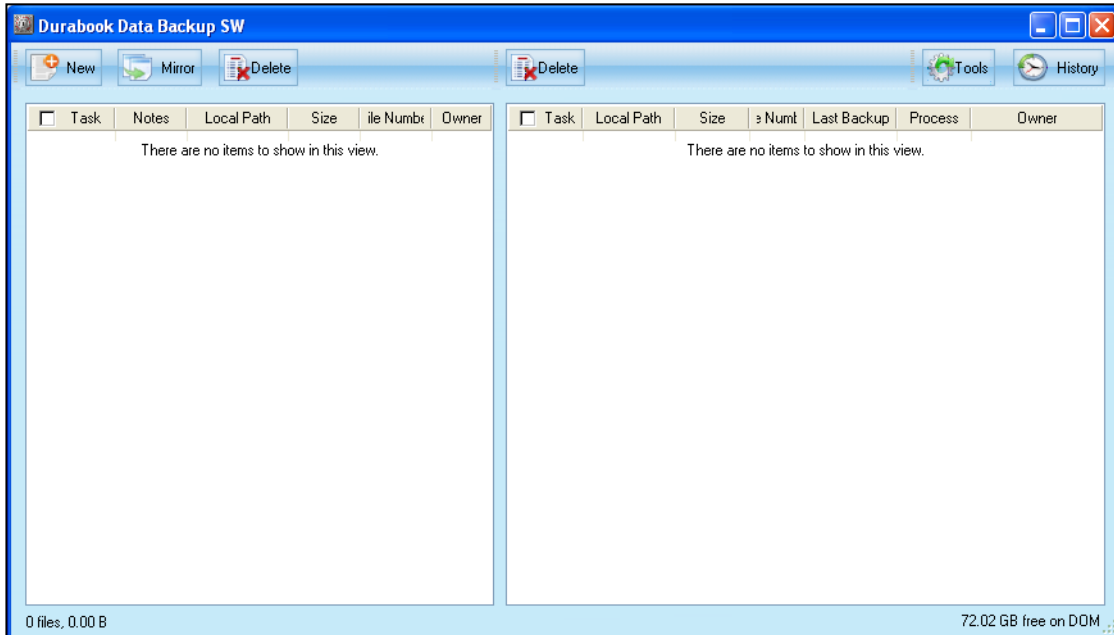
1. When you launch the Durabook DataGuard software for the first time, you will be asked to specify the DOM path.



NOTE

- Launch the software by double-clicking ***Durabook DataGuard Software*** icon  on the computer desktop.

2. Click **OK** and enter the main menu.



There are mainly three parts: Tool bar, HDD task list and DOM task list.

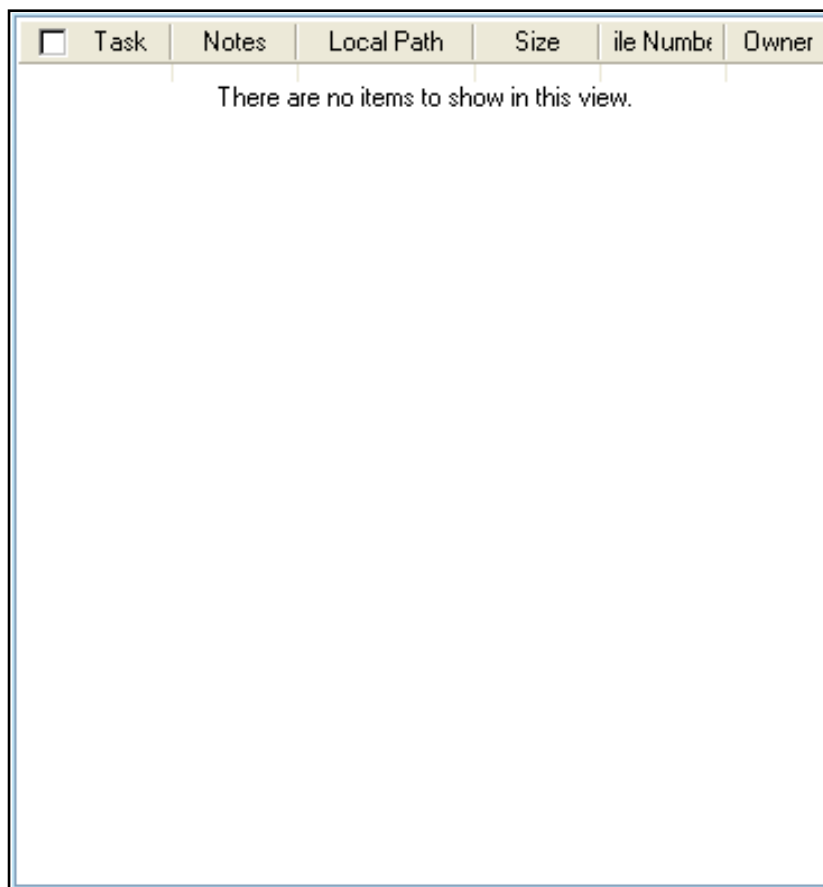
● **Tool bar:**



- a. **New** button: create a new task.
- b. **Mirror** button: do mirror backup.
- c. **Delete** button (on the left): delete tasks in HDD task list.
- d. **Delete** button (on the right): clean up backup in DOM.
- e. **Tools** button: access the software user's manual and configure its setting.
- f. **History** button: view the latest mirror backup log.

- **HDD task list:**

It consists of the task list in HDD. The file number and file size of all tasks are displayed on the bottom left of the screen.



<input type="checkbox"/>	Task	Notes	Local Path	Size	File Number	Owner
There are no items to show in this view.						

Task list fields include: task, notes, local path, size, file number, and owner.

- **Task:** a unique task name.
- **Notes:** users can input notes for a task to describe the task.
- **Local Path:** the local path that the user chooses when creating tasks.
- **Size:** the total file size of a task.
- **File Number:** the total file number of a task.
- **Owner:** the user who created the task.

- **DOM task list:**

It consists of the task list in DOM. The free space in DOM is displayed on the bottom right of the screen.



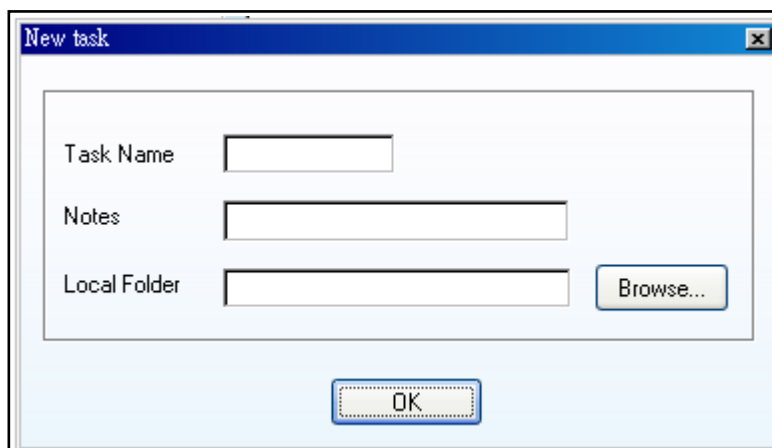
<input type="checkbox"/>	Task	Local Path	Size	File Numt	Last Backup	Process	Owner
There are no items to show in this view.							

Task information includes: task name, local path, size, file number last backup date, owner, and backup process status.

- **Task:** the task name created by the user.
- **Local Path:** the local path that the user chooses when creating tasks.
- **Size:** the total file size of a task.
- **File Number:** the total file number of a task.
- **Last Backup:** the date of the last backup.
- **Process:** the status of the backup.
- **Owner:** the user who created the task.

Creating New Tasks

1. Create a new task by clicking the **New** button.



NOTE

- The maximum character input for *Task Name* and *Notes* is 64.

2. Enter the task name and choose the folder that you want to backup, then click **OK**.

It will back up the file(s) in the folder immediately.



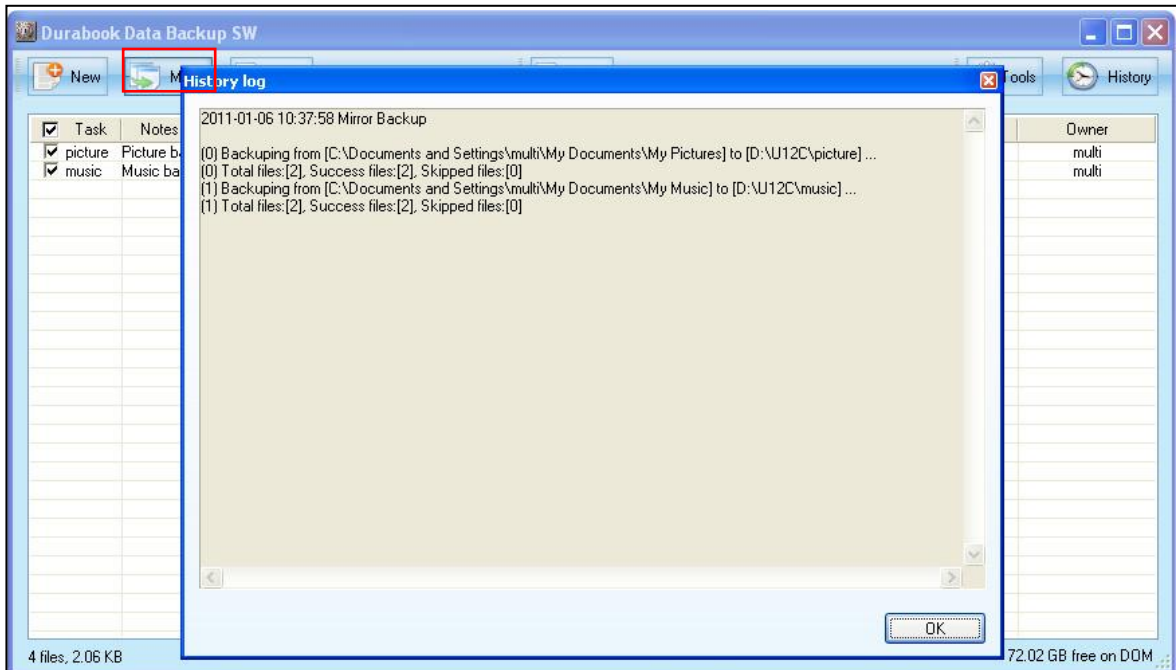
NOTE

- Durabook DataGuard will monitor the task(s) you have checked and if there are any changes on the file(s), it will do automatic backup.

3. When the automatic backup is running, the system tray icon will blink until the automatic backup is complete.

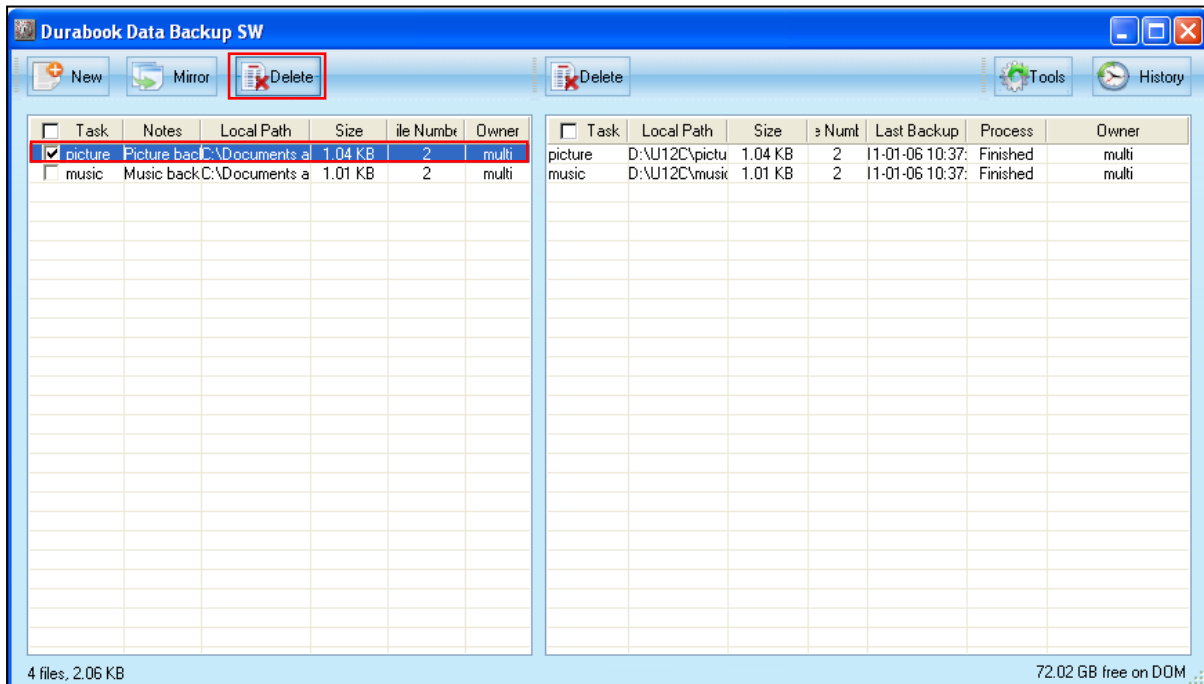
Running the Mirror Backup

- Click the **Mirror** button to run the mirror backup. When mirror backup is complete, the backup log appears on the screen.



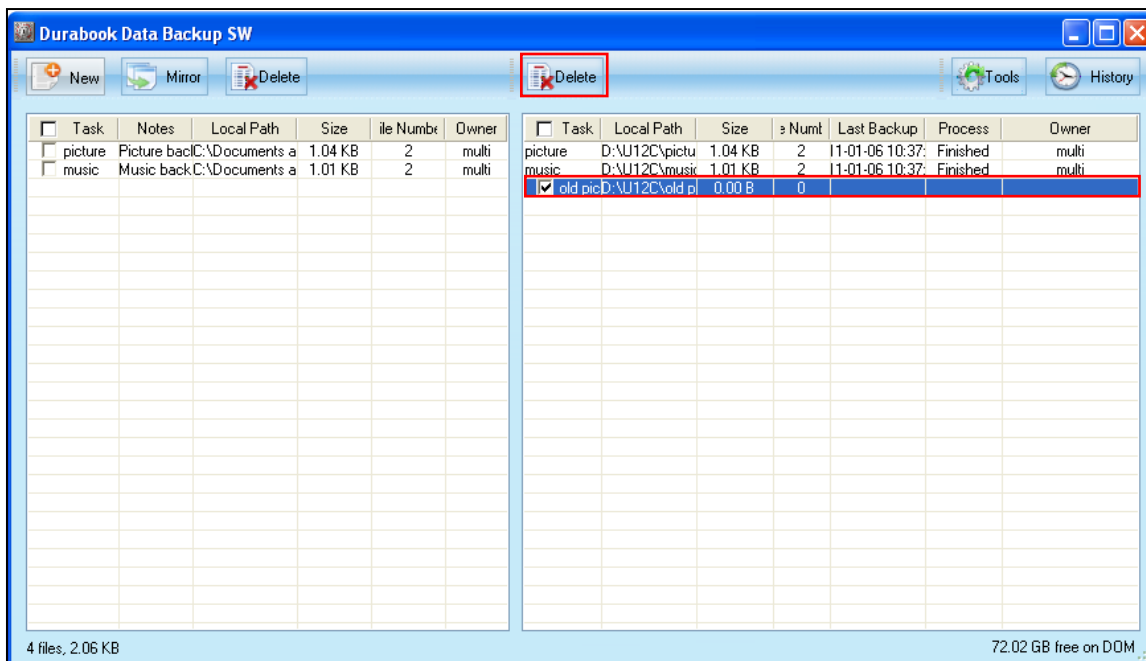
Deleting Tasks

- Users can delete the task(s) in HDD. Check the box on the HDD task list and click the **Delete** button to delete the task(s).

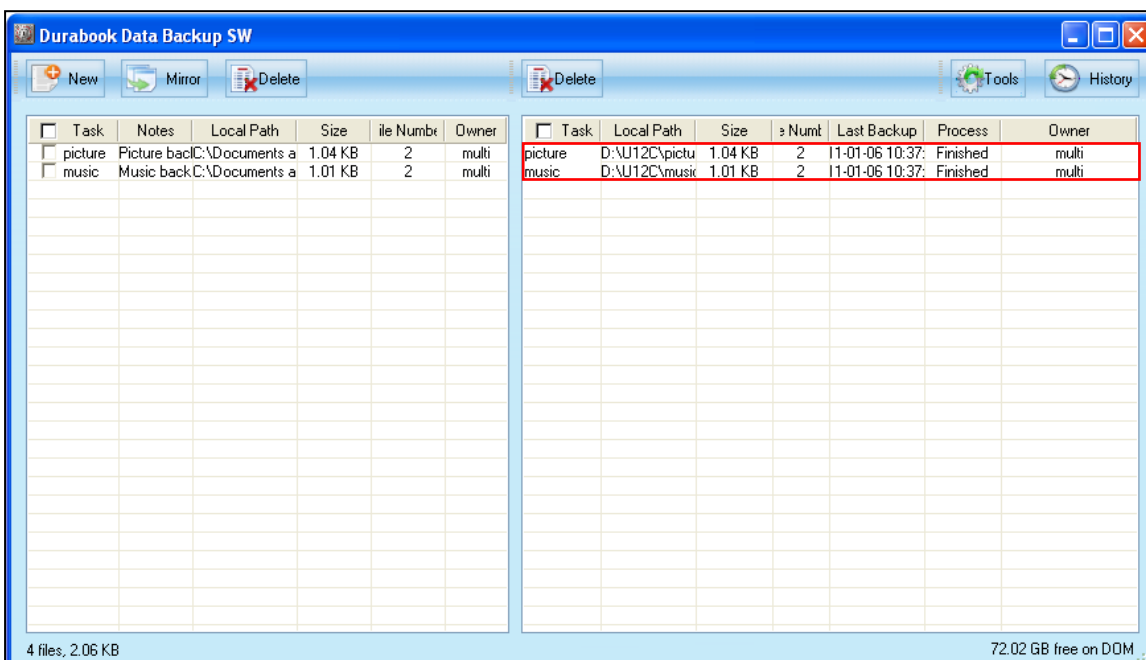


Durabook DataGuard Software

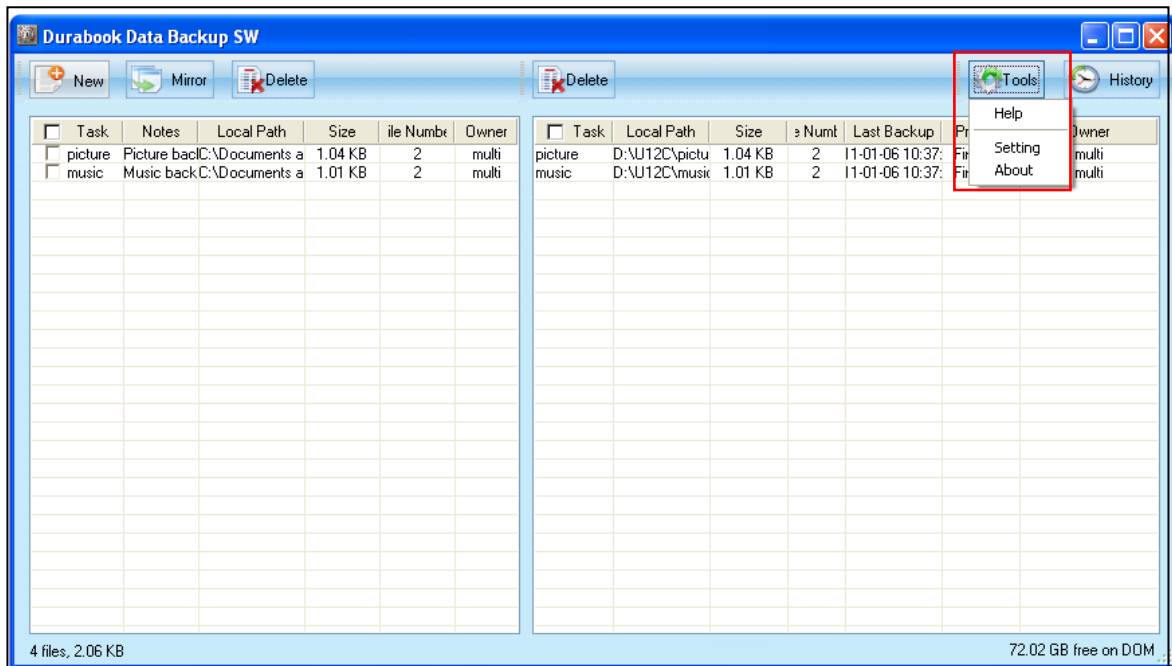
- Check the box on the DOM task list and click the **Delete** button to clean up the folder(s) exists in DOM which not mapping with the task(s) in HDD task list.



- If the task is listed in the HDD task list, users are not allowed to delete the relevant task(s) in DOM.

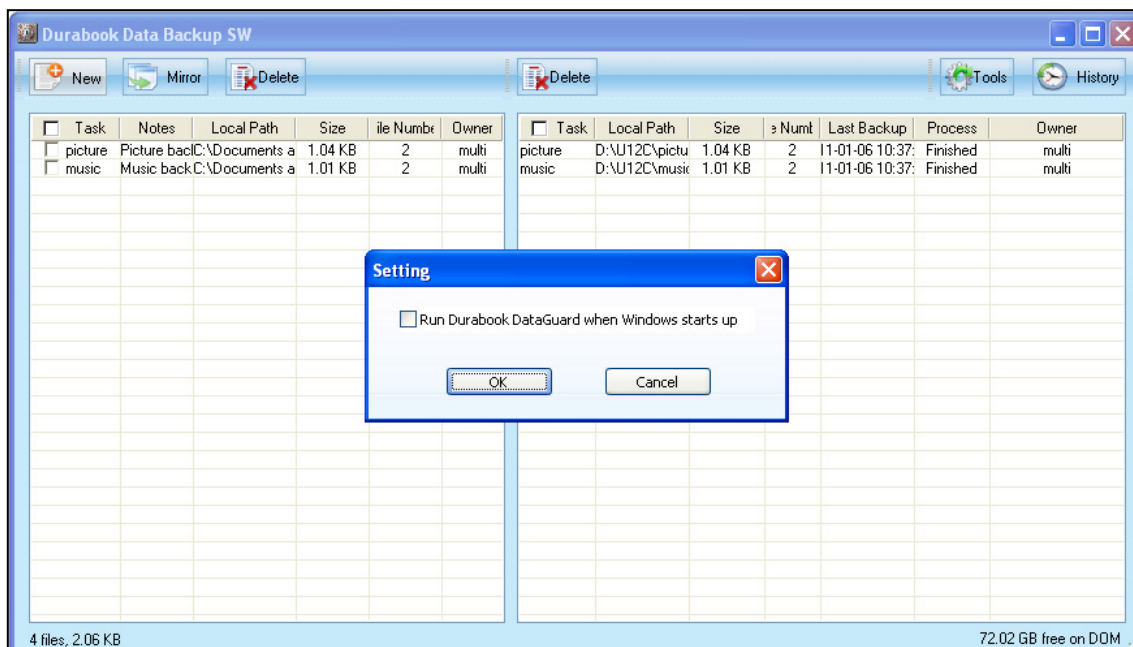


Using Tools



Click the **Tools** button on the tool bar and do the following:

- Select **Help** to get the software user's manual.
- Select **Setting** to set whether you want to run Durabook DataGuard when Windows starts up.



- Select **About** to view the current software version.

Troubleshooting

This chapter contains a list of common problems that you might experience when using your notebook, and techniques to try and overcome the problem. If you need additional help, contact your retailer.

Problems	Solutions
The battery isn't charging.	<ul style="list-style-type: none"> • Check if the power adapter is properly connected. • Make sure that the battery is within the recommended charging temperature of -20°C to 50°C.
The screen suddenly turns blank.	The brightness control is not properly set. Adjust the LCD screen brightness.
	Your notebook might be in standby or hibernate mode. Press the Power button to wake the system.
	If using the battery, the battery may be depleted. Replace with a fully charged battery or connect the power adapter to an electrical outlet.
The notebook cannot connect to Internet.	Check if the LAN cable is properly connected.
	If using wireless, check if your location is out of range of the network. Move your notebook closer to the access point.
	If the network you are connecting to requires a security password, make sure you enter the correct password.
	Check to make sure the settings configurations are correct.
Nothing happens when I press the Power button.	Check if the power adapter is connected to an electrical outlet.
	If using a battery pack, make sure it has enough power. Otherwise, replace the battery.
The notebook cannot resume from hibernate or standard mode.	The battery power level might be too low. Connect the power adapter to an electrical outlet or replace the battery.
The notebook does not produce any sound.	Audio has been muted. Click on the <i>Speaker</i> icon on the right of your Windows taskbar. When the volume control box appears, uncheck the <i>Mute</i> check box.

Specifications

Features		Specifications
Processor	Type & Speed	Intel I3 and I5 UVL serial
	Install Method	BGA
	Power Consumption	18W
Major Chipsets	Chipsets	Intel HM55
System Memory	Type	DDR-III 800/1333
	Capacity	Two 204-pin DDRIII SODIMM sockets each for 2GB, 4GB (if available)
	Maximum Memory	8GB
Display	LCD	12.1" WXGA (1280x800) TFT, LED backlight
	Camera	1.3 Megapixel Webcam
	Touch Screen	Optional resistive type touch panel support palm rejection feature: <ul style="list-style-type: none"> ● Optional 12.1" digitizer with digital stylus ● Non-digitizer touch panel with dummy stylus
Storage	HDD	<ul style="list-style-type: none"> ● User removable HDD module without using a tool ● Support 2.5" SATA HDD ● Supports an external data rate 3.0 Gbps (300 MB/s) (Serial-ATA Generation-2)
	SSD	<ul style="list-style-type: none"> ● For the operating of unit under 0°C by using SSD as the main storage ● User removable SSD module without using a tool ● SATA 2.5" (Gen. 2) SSD supports an external data rate 3.0 Gbps
	Data Backup	<ul style="list-style-type: none"> ● An optional internal SATA SSD for databackup ● Software utility for auto back-up of selected data files between HDD and SSD (For HDD data backup)

Specifications

Features		Specifications
Graphic	Graphic Controller	Integrated graphic controller
	Graphic Memory	TBA
I/O Devices	Point Device	Hidden Capacitive Touch Pad – PS/2 mouse interface / 2 buttons support Right/Left
	Expansion Card	One Express 34 card slot
	Memory Card	One SD Card reader slot supports SDHC
Communications	Networking devices	<ul style="list-style-type: none"> ● Integrated Gigabit bps Ethernet ● Support PXE function
	Wireless networking devices	<ul style="list-style-type: none"> ● One Mini Express card slot ● One is for WLAN (PCI-e only) ● Intel[®] WiFi Link 1000 (1x2) with PCI-e Half
	Bluetooth	Support BT 2.1 EDR (optional)
I/O Ports	Standard	<ul style="list-style-type: none"> ● One USB 2.0 connectors ● One e-SATA/USB 2.0 combo connector ● One RJ-45 jack for internal 10/100/1000M bit Ethernet ● One DC-In jack ● One 15 pin D-sub VGA port for external monitor/projector ● Audio jacks (support stereo Mic. Jack) ● One 84 pin docking connector which supports DC, VGA, LAN and USB (USBx2,VGA, LAN are direct signals from Unit)
Audio		<ul style="list-style-type: none"> ● High Definition Audio ● Stereo, supports two 1.5W speakers ● Analog Microphone
Power	AC Adapter	<ul style="list-style-type: none"> ● AC power input: 100V-240V, 50Hz-60Hz, 65W ● Output: 19V ● Compliant with Energy Star 5.0
	Battery Pack	Standard Li-Ion 6-cell (3S2P, 5200mAH) Smart Battery Pack
	2nd Battery	Optional 2nd Li-Ion 6-cell (3S2P, 5000mAh)

Features		Specifications
Environment	Temperature / Humidity	<ul style="list-style-type: none"> ● Operating Environment Temperature: -20°C ~ 50°C (Operating under 0°C by using SSD as the main storage) ● Non-operating Environment Temperature: -40°C ~ 70°C ● Operating Humidity : 20% ~ 90%, relative humidity, non-condensing (Depends on temperature)
Dimensions		328mm (W) x 277mm (D) x 40.8mm (H)
Weight		2.5kg (with standard Battery)

Specifications are subject to change without prior notice.