

# DOCUMENTATION HANDBOOK



**PHONTECH**  
TELEPHONES AND INTERCOM  
UNITS



[www.jotron.com](http://www.jotron.com)



**Amendment Record**

01	09.10.2014	Release <b>p/n 19182</b>	ASK	--
<b>Version</b>	<b>Issue Date</b>	<b>Reason for issue</b>	<b>Made by</b>	<b>Approved by</b>

## Telephones and Intercom Units, Handbook contents:

Handbook page:

<b>Service and Warranty</b> .....	4
<b>Utilization</b> .....	4

### *INTERCOM UNITS:*

#### **DICS 6110 MKII – Accommodation Unit**

– Mechanical Layout .....	ML .....	5
– External Connection .....	98609-010-EC .....	6

#### **DICS 6111 – WP Unit w/Handset**

– Mechanical Layout .....	98609-064-ML .....	7
– External Connection .....	98609-064-EC .....	8
– Terminal Arrangement .....	98609-064-TA .....	9

#### **DICS 6112 – WP Unit**

– Mechanical Layout .....	98609-065-ML .....	10
– External Connection .....	98609-065-EC .....	11
– Terminal Arrangement .....	98609-065-TA .....	12

#### **DICS 6113 – Flush mounted Unit w.o. Backlight**

– Mechanical Layout .....	08600-004-ML .....	13
– External Connection .....	08600-004-EC .....	14
– Terminal Arrangement .....	08600-004-TA .....	15

#### **DICS 6114 – WP Portable Unit**

– Mechanical Layout .....	98609-068-ML .....	16
– External Connection .....	98609-022-EC .....	17

#### **9011 – Plug box**

– Mechanical Layout .....	09908-005-ML .....	18
– Internal wiring .....	09908-005-EC .....	19

#### **DICS 6123 – Flush mounted Unit with Backlight**

– Mechanical Layout .....	08600-005-ML .....	20
– External Connection .....	08600-005-EC .....	21
– Terminal Arrangement .....	08600-005-TA .....	22

#### **DICS 6124 – WP Bulkhead Unit**

– Mechanical Layout .....	98609-069-ML .....	23
– External Connection .....	98609-069-EC .....	24

### *VoIP INTERCOM/TELEPHONE UNITS:*

#### **SNOM 300 - Speakerphone**

– Data Sheet .....	25
--------------------	----

#### **FEP-IP4 – Flush mounted Phone with Display**

– Data Sheet .....	27
--------------------	----

#### **FernTel IP4 Weatherproof VoIP Telephone**

– Data Sheet .....	29
--------------------	----

#### **ExResistTel IP2 Ex VoIP Telephone**

– Data Sheet .....	31
--------------------	----

### *ANALOGUE TELEPHONES:*

#### **Gigaset DA 710 Speakerphone**

– Data Sheet/User Manual .....	34
--------------------------------	----

#### **5113 – Flush mounted Speakerphone with Call Relay**

– Mechanical Layout .....	09514-001-ML .....	43
– External Connection .....	09514-001-EC .....	44

#### **5123 – Flush mounted Speakerphone with Backlight and Call Relay**

– Mechanical Layout .....	09514-002-ML .....	45
– External Connection .....	09514-002-EC .....	46

#### **5111 (FernTel 3) – WP Rugged Industrial Telephone**

– Data Sheet .....	47	
– Mechanical Layout .....	07500-004-ML .....	49



– External Connection .....	07500-004-EC .....	50
<b>5111-H – WP Rugged Industrial Telephone with Headset Interface</b>		
– Mechanical Layout .....	07500-002-ML .....	51
– External Connection .....	07500-002-EC .....	52
<b>5000 – Ring Relay Unit</b>		
– Mechanical Layout .....	09908-008-ML .....	53
– External Connection .....	09908-008-EC .....	54
<b>ExResistTel IP2 Ex WeatherProof Telephone</b>		
– Data Sheet .....		55
 <b><i>TRUNK INTERFACE</i></b>		
<b>SVEA II – GSM Trunk Interface</b>		
– Data Sheet .....		58

## **SERVICE AND WARRANTY**

Warranty time: 2 years from factory.

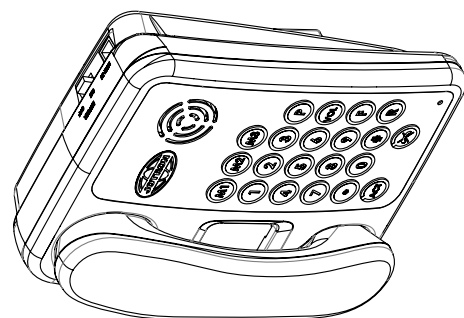
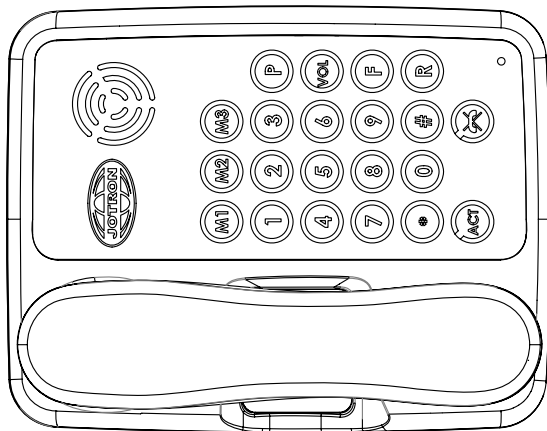
All goods sold by Jotron AS are warranted to be free from defect in workmanship and material for the period of twenty-four (24) months from the date of delivery (unless stated otherwise and confirmed in writing) PROVIDED:

- (a) Jotron AS is given full particulars in writing of any claim prior to the expiration of such a period and within fourteen days of the discovery of the alleged defect.
- (b) The product/s have been stored, maintained or used according to manual/s and specification/s
- (c) Liability shall be limited at Jotron AS' options to replacement or repair or to a sum not exceeding the net invoice value of the defective goods.
- (d) Upon request the alleged faulty goods are returned to Jotron AS at the Buyer's expense.
- (e) Unless expressly stipulated in the acceptance of the order Jotron AS gives no warranty or guarantee of the fitness or suitability of the goods for any purpose whether disclosed or otherwise.
- (f) All other warranties or conditions expressed or implied are hereby excluded and Jotron AS shall in no circumstances be liable for consequential damages.

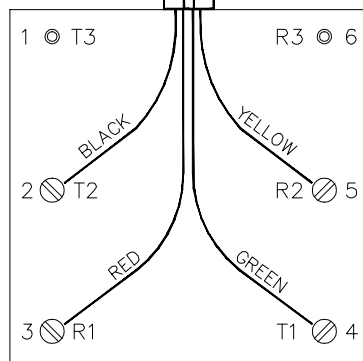
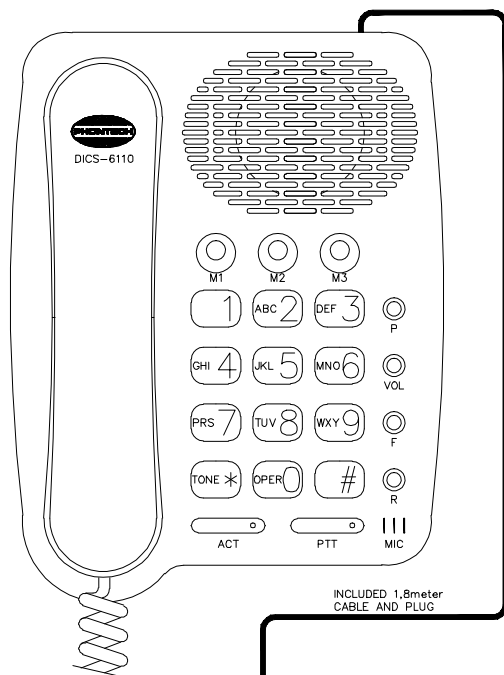
## **UTILIZATION:**

This equipment is not to be disposed in normal waste, but be handled in accordance with applicable waste disposal regulations in the country where the equipment is used

1. 长度单位为mm。



材料：  —	± 公差 $X \pm .3$ $XX \pm .1$ $\pm 1^\circ$	注意： 本图纸属干稿品公司， 未经稿品公司书面许可， 不得擅自复制或使品。			上海磊品有限公司  TELEPHONE-6110 JOTRON	尺寸 图号： 版数： X1	此图： 文件名： 页 DF
		设计	姓名	日期			
		审核	毋露杰	06/25/2014			



CONNECTION BOX

LINE CONNECTION TO DICS  
EXCHANGE 610X = 2 CENTER CORES

- RED / GREEN
- R1 / T1
- 3 / 4

**ESPECIALLY IMPORTANT:**

THE CABLES MUST BE:

- COMMON OUTER SCREEN.
- INDIVIDUALLY TWISTED PAIRS.
- RECOMMENDED CONDUCTOR SIZE IS 0,75 .
- THE CABLING FOR THIS SYSTEM MUST BE A SEPARATE NETWORK.
- DO NOT COMBINE DIFFERENT SYSTEMS IN THE SAME CABLE. THIS TO PREVENT DISTURBANCE AND NOISE CAUSED BY INTERFERENCE.
- THE MAIN JUNCTION BOX MUST BE LOCATED AS CLOSE TO THE MASTER STATION AS POSSIBLE.



This document is the property of PHONTECH and must not be copied or shown to a third person without our written acceptance. In the interest of product improvement, PHONTECH reserves the right to alter specification and design without notice.

REV. No.	ISSUE DATE	REASON FOR ISSUE	PREPARED	CHECKED	APPROVED
0	25.06.2004	FINAL DOCUMENTATION	ASK	TBA	ASK

TITLE: DICS 6110, ACCOMODATION UNIT.  
EXTERNAL CONNECTION.

SIZE: A3 UED No: 112  
DOC. No: 98609-010-EC  
FILE NAME: 98609-010-EC.DWG

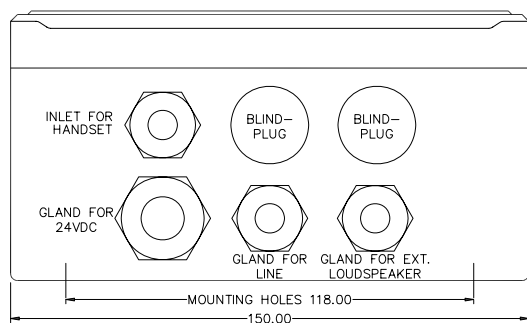
1

2

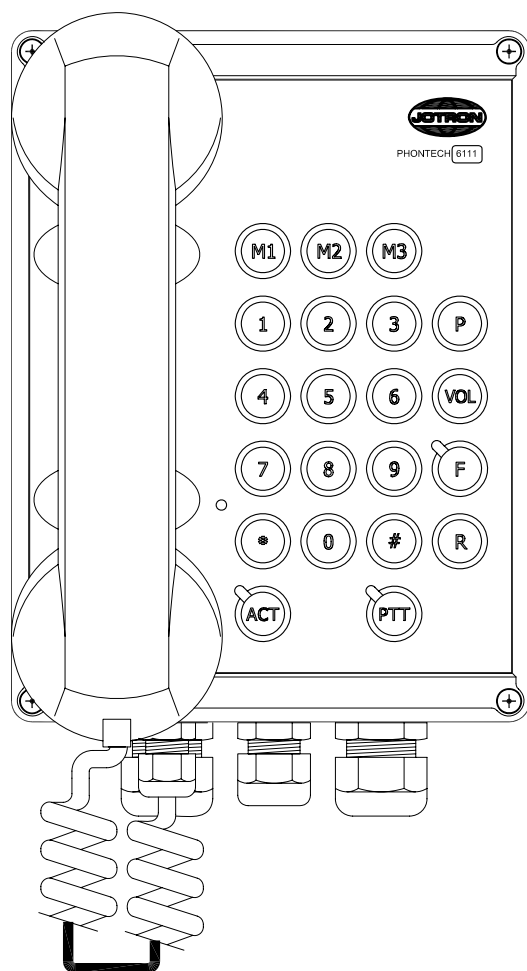
3

4

A



B



C

D

E

F

A

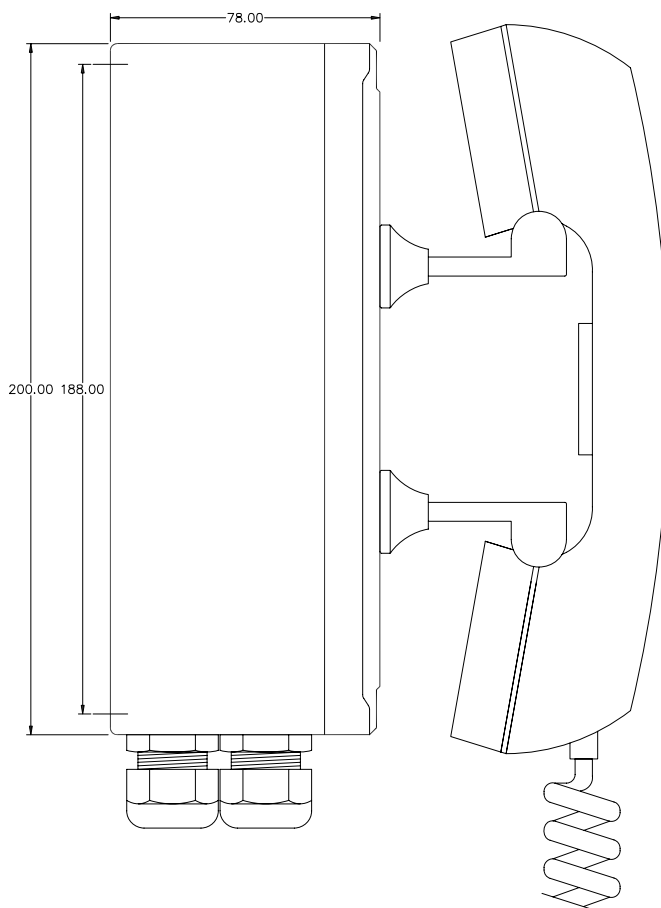
B

C

D

E

F

**EQUIPMENT DATA:**

MANUFACTURER : JOTRON PHONTECH AS  
MODEL/TYPE : DICS 6111  
RACK/BOX SUPPL. : JOTRON PHONTECH AS  
RACK/BOX TYPE : 17452/17453  
MATERIAL : ABS.  
COLOUR : RAL 7035.  
WEIGHT OF UNIT : APP. 1.2 Kg.  
MOUNTING : TO WALL.

FIXING DETAILS : 4pcs. M4 BOLT.  
ACCESS : FRONT.  
CABLE ENTRY : BOTTOM.  
GLAND TYPE : PG-7, 9 AND 13,5.  
PROTECTION IP : IP-56.  
POWER SUPPLY : 24VDC.  
POWER CONSUMP. : 15W  
HEAT DISSIPATION : NA

0	18.01.2011	DVM COMPLETION	ASK		ASK
B	01.07.2010	Merging 6111 and 6121	TH		
A	09.11.2007	DEVELOPMENT.	R.F.	BEØ	ASK
REV No.	ISSUE DATE	REASON FOR ISSUE	PREPARED	CHECKED	APPROVED

TITLE: DICS 6111 – Version 1026  
UNIT WITH HANDSET.

MECHANICAL LAYOUT.



This document is the property of JOTRON PHONTECH and must not be copied or shown to a third person without our written consent. In the interest of product improvement, JOTRON PHONTECH reserves the right to alter specification and design without notice.

SIZE: A3 UED No:  
DOC. No: 98609-064-ML  
FILE NAME: 98609-064-ML.DWG

1

2

3

4

1

2

3

4

A

B

C

D

E

F

A

B

C

D

E

F

# DICS 6111 WP UNIT w. HANDSET

CONNECTION TO  
DICS EXCHANGE  
610X

Ø 28 LINE  
Ø 29  
Ø 30 SCREEN / GND

EXTERNAL LOUDSPEAKER  
9  
10  
SCREEN / GND 11

LOUDSPEAKER  
Typ. 20 Ohms  
Max. 15W

R65 PRESET LEVEL FOR  
THE EXTERNAL LOUDSPEAKER

S1 NOTE 1

SIGNAL DEVICE POWER SUPPLY  
24VDC / 110VAC / 230VAC  
MAX 5A

INTERNAL  
CONNECTION:  
EXTERNAL  
SIGNAL  
DEVICE

1 (+)  
2  
3 (+)  
4  
5 NOT IN USE

SIGNAL DEVICE

ALTERNATIVE CONNECTION:

INTERNAL  
CONNECTION:  
EXTERNAL  
SIGNAL  
DEVICE

1 NO  
2 NOT IN USE  
3 COM  
4 NOT IN USE  
5 NC

GENERAL  
SENSOR  
SYSTEM

24 VDC POWER SUPPLY  
FOR EXTERNAL LOUD-  
SPEAKER AND RELAY

P4  
Ø 6 +24 V DC  
Ø 7 0 V  
Ø 8 SCREEN / GND

## NOTE 1:

SW 1 OFF = HOOKSWITCH DETECTION ENABLE  
SW 2-4 EXTERNAL MIC. SENSITIVITY ADJUSTMENT:

SW 2	SW 3	SW 4	SENSITIVITY	
ON	ON	ON	0 dB	(DEFAULT)
ON	OFF	OFF	-3 dB	
OFF	ON	ON	-6 dB	
OFF	ON	OFF	-9 dB	
OFF	OFF	ON	-12 dB	
OFF	OFF	OFF	-15 dB	

## NOTES:

### CABLE REQUIREMENTS:

TWISTED PAIR WITH OUTER SCREEN.  
RECOMMENDED CONDUCTOR AREA ALL  
CABLE TYPES: 0,75 sq.mm.

DO NOT COMBINE SIGNAL CABLES WITH  
OTHER CABLE TYPES SUCH AS MAIN  
SUPPLY.

THE CABLING FOR THIS SYSTEM SHOULD  
BE A SEPARATE NETWORK.

REV No.	ISSUE DATE	REASON FOR ISSUE	PREPARED	CHECKED	APPROVED
0	18.01.2011	DVM COMPLETION	ASK		ASK

TITLE: DICS 6111 - Ver. 1026,  
WP UNIT w. HANDSET  
EXTERNAL CONNECTION



This document is the property of JOTRON  
PHONTECH and must not be copied or shown  
to a third person without our written consent.  
In the interest of product improvement,  
JOTRON PHONTECH reserves the right to  
alter specification and design without notice.

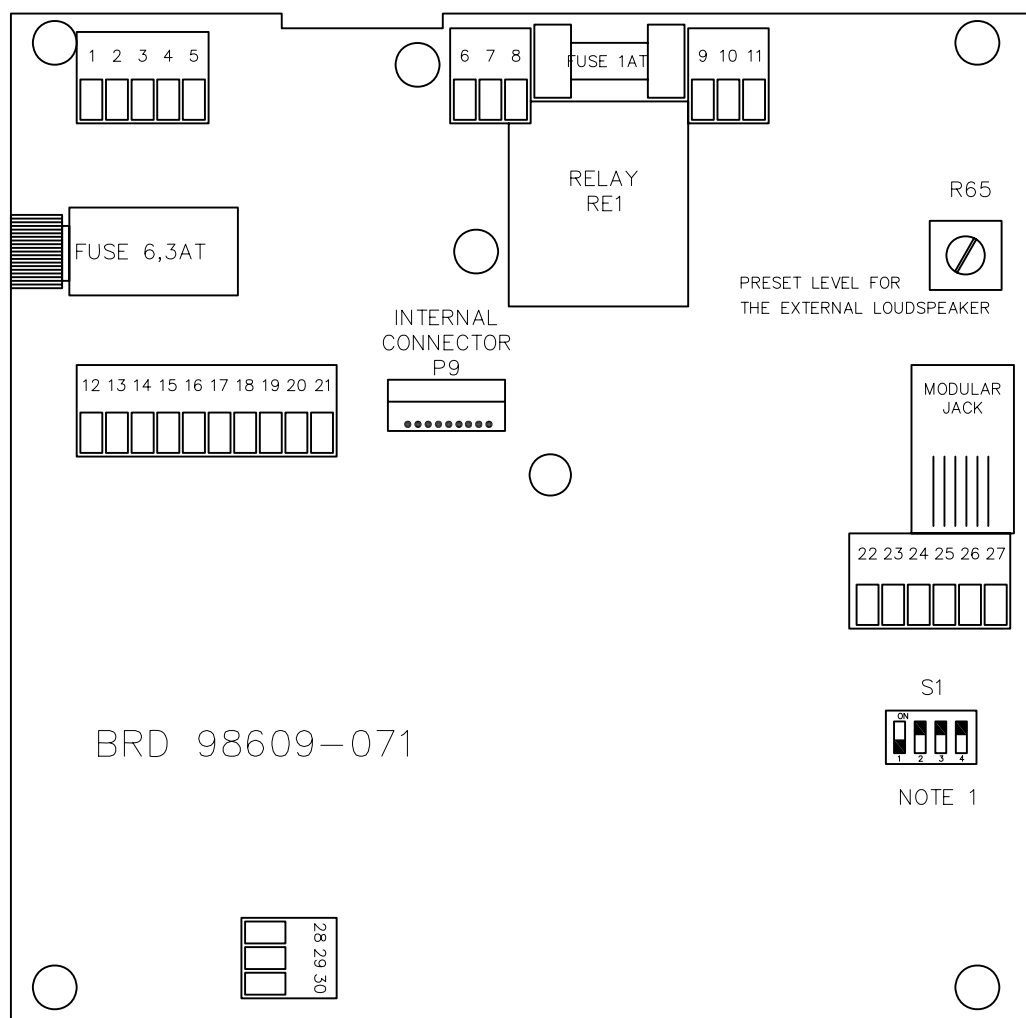
SIZE:	A3	PAGE:	--
DRAWING No:	98609-064-EC		
FILE NAME:	98609-064-EC.dwg		

1

2

3

4



- |   |                                  |
|---|----------------------------------|
| 1 - P3.1 : Signal Device (In+ / NO)         | 16 - P8.5 : GP Output 1          |
| 2 - P3.2 : Signal Device (In- / --)         | 17 - P8.6 : GP Output 2          |
| 3 - P3.3 : Signal Device (Out+ / COM)       | 18 - P8.7 : REF GP Input 1       |
| 4 - P3.4 : Signal Device (Out- / --)        | 19 - P8.9 : GP Input 1           |
| 5 - P3.5 : Signal Device (NC / --)          | 20 - P8.10 : REF GP Output       |
| 6 - P4.1 : Power Supply Input +24VDC        | 21 - P8.11 : Not in use          |
| 7 - P4.2 : Power Supply Input 0V            | 22 - P12.1 : Handset Mic -       |
| 8 - P4.3 : Screen / GND                     | 23 - P12.2 : Handset Mic +       |
| 9 - P2.1 : External Loudspeaker -a          | 24 - P12.3 : Handset Earphone -a |
| 10 - P2.2 : External Loudspeaker -b         | 25 - P12.4 : Handset Earphone -b |
| 11 - P2.3 : Screen / GND                    | 26 - P12.5 : Not in use          |
| 12 - P8.1 : External Switch -a              | 27 - P12.6 : Not in use          |
| 13 - P8.2 : External Switch -b              | 28 - P13.1 : Line -a             |
| 14 - P8.3 : Not in use                      | 29 - P13.2 : Line -b             |
| 15 - P8.4 : Signal Device Activation Output | 30 - P13.3 : Screen / GND        |

#### NOTE 1:

SW 1 OFF = HOOKSWITCH DETECTION ENABLE  
SW 2-4 EXTERNAL MIC. SENSITIVITY ADJUSTMENT:

SW 2	SW 3	SW 4	SENSITIVITY	
ON	ON	ON	0 dB	(DEFAULT)
ON	OFF	OFF	-3 dB	
OFF	ON	ON	-6 dB	
OFF	ON	OFF	-9 dB	
OFF	OFF	ON	-12 dB	
OFF	OFF	OFF	-15 dB	

0	19.01.2011	DVM COMPLETION	ASK		ASK
REV No.	ISSUE DATE	REASON FOR ISSUE	PREPARED	CHECKED	APPROVED

TITLE: DICS 6111 - Ver. 1026,  
WP UNIT w. HANDSET  
TERMINAL ARRANGEMENT.



This document is the property of JOTRON PHONTECH and must not be copied or shown to a third person without our written consent. In the interest of product improvement, JOTRON PHONTECH reserves the right to alter specification and design without notice.

SIZE:	A4	PAGE:	--
DRAWING No:	98609-064-TA		
FILE NAME:	98609-064-TA.dwg		

1

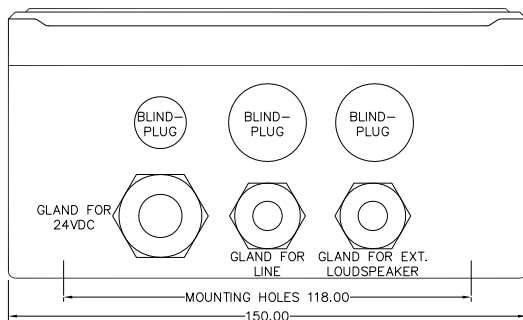
2

3

4

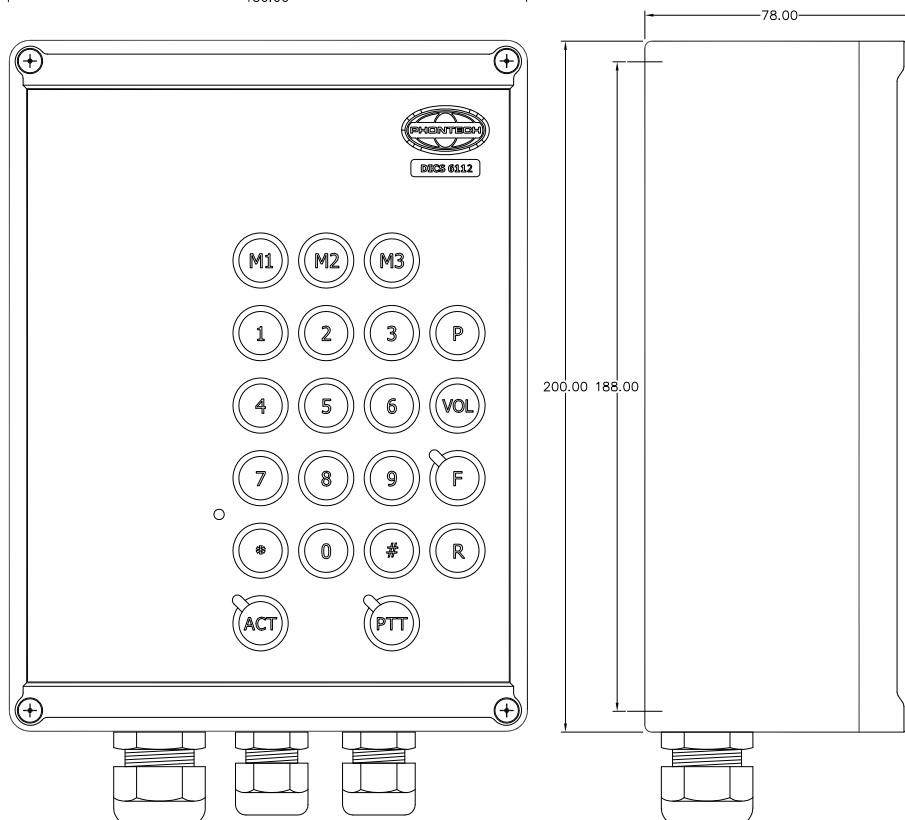
A

A



B

B



C

C

D

D

E

E

F

F

EQUIPMENT DATA:

MANUFACTURER : PHONTECH AS.  
MODEL/TYPE : DICS-6112.  
RACK/BOX SUPPL. : BOPLA.  
RACK/BOX TYPE : ET 223 F.  
MATERIAL : ABS.  
COLOUR : RAL 7035.  
WEIGHT OF UNIT : APP. 1.0 Kg.  
MOUNTING : TO WALL.

FIXING DETAILS : 4pcs. M4 BOLT.  
ACCESS : FRONT.  
CABLE ENTRY : BOTTOM.  
GLANG TYPE : PG-7, 9 AND 13,5.  
PROTECTION IP : IP-56.  
POWER SUPPLY : 24VDC.  
POWER CONSUMP. : 15W  
HEAT DISSIPATION : NA

A	09.11.2007	DEVELOPMENT.	R.F.	BEØ	ASK
REV No.	ISSUE DATE	REASON FOR ISSUE	PREPARED	CHECKED	APPROVED



This document is the property of PHONTECH and must not be copied or shown to a third person without our written acceptance. In the interest of product improvement, PHONTECH reserves the right to alter specification and design without notice.

TITLE: DICS 6112 – VERSION 05827.  
WP UNIT WITHOUT HANDSET.

MECHANICAL LAYOUT.

SIZE:	A3	UED No:	
DOC. No:	98609-065-ML		
FILE NAME:	98609-065-ML.DWG		

1

2

3

4



1

2

3

4

## DICS 6112 WP UNIT

CONNECTION TO  
DICS EXCHANGE  
610XØ 28 | LINE  
Ø 29 |  
Ø 30 | SCREEN / GNDEXTERNAL LOUDSPEAKER  
SCREEN / GNDLOUDSPEAKER  
Typ. 20 Ohms  
Max. 15WHEADSET MIC  
HEADSET EAR  
HOOKSWITCH  
FOR HEADSET

BLACK

YELLOW

RED

WHITE

BROWN

GREEN

MIC

EAR

EAR

ON-HOOK

OFF-HOOK

HOOK-  
SWITCH

HEADSET 6035

R65

PRESET LEVEL FOR  
THE EXTERNAL LOUDSPEAKER

S1

NOTE 1

INTERNAL  
CONNECTION:EXTERNAL  
SIGNAL  
DEVICESIGNAL DEVICE POWER SUPPLY  
24VDC / 110VAC / 230VAC  
MAX 5A

SIGNAL DEVICE

NOT IN USE

INTERNAL  
CONNECTION:EXTERNAL  
SIGNAL  
DEVICE

ALTERNATIVE CONNECTION:

GENERAL  
SENSOR  
SYSTEM

## NOTE 1:

SW 1 OFF = HOOKSWITCH DETECTION ENABLE  
SW 2-4 EXTERNAL MIC. SENSITIVITY ADJUSTMENT:

SW 2	SW 3	SW 4	SENSITIVITY	
ON	ON	ON	0 dB	(DEFAULT)
ON	OFF	OFF	-3 dB	
OFF	ON	ON	-6 dB	
OFF	ON	OFF	-9 dB	
OFF	OFF	ON	-12 dB	
OFF	OFF	OFF	-15 dB	

24 VDC POWER SUPPLY  
FOR EXTERNAL LOUD-  
SPEAKER AND RELAYP4  
Ø 6 +24 V DC  
Ø 7 0 V  
Ø 8 SCREEN / GND

## NOTES:

## CABLE REQUIREMENTS:

TWISTED PAIR WITH OUTER SCREEN.  
RECOMMENDED CONDUCTOR AREA ALL  
CABLE TYPES: 0,75 sq.mm.DO NOT COMBINE SIGNAL CABLES WITH  
OTHER CABLE TYPES SUCH AS MAIN  
SUPPLY.THE CABLING FOR THIS SYSTEM SHOULD  
BE A SEPARATE NETWORK.

REV No.	ISSUE DATE	REASON FOR ISSUE	PREPARED	CHECKED	APPROVED
0	18.01.2011	DVM COMPLETION	ASK		ASK

TITLE: DICS 6112 - Ver. 05827  
WP UNIT WITHOUT HANDSET  
EXTERNAL CONNNECTION

This document is the property of JOTRON  
PHONTECH and must not be copied or shown  
to a third person without our written consent.  
In the interest of product improvement,  
JOTRON PHONTECH reserves the right to  
alter specification and design without notice.

SIZE: A3 PAGE: --  
DRAWING No: 98609-065-EC  
FILE NAME: 98609-065-EC.dwg

A

A

B

B

C

C

D

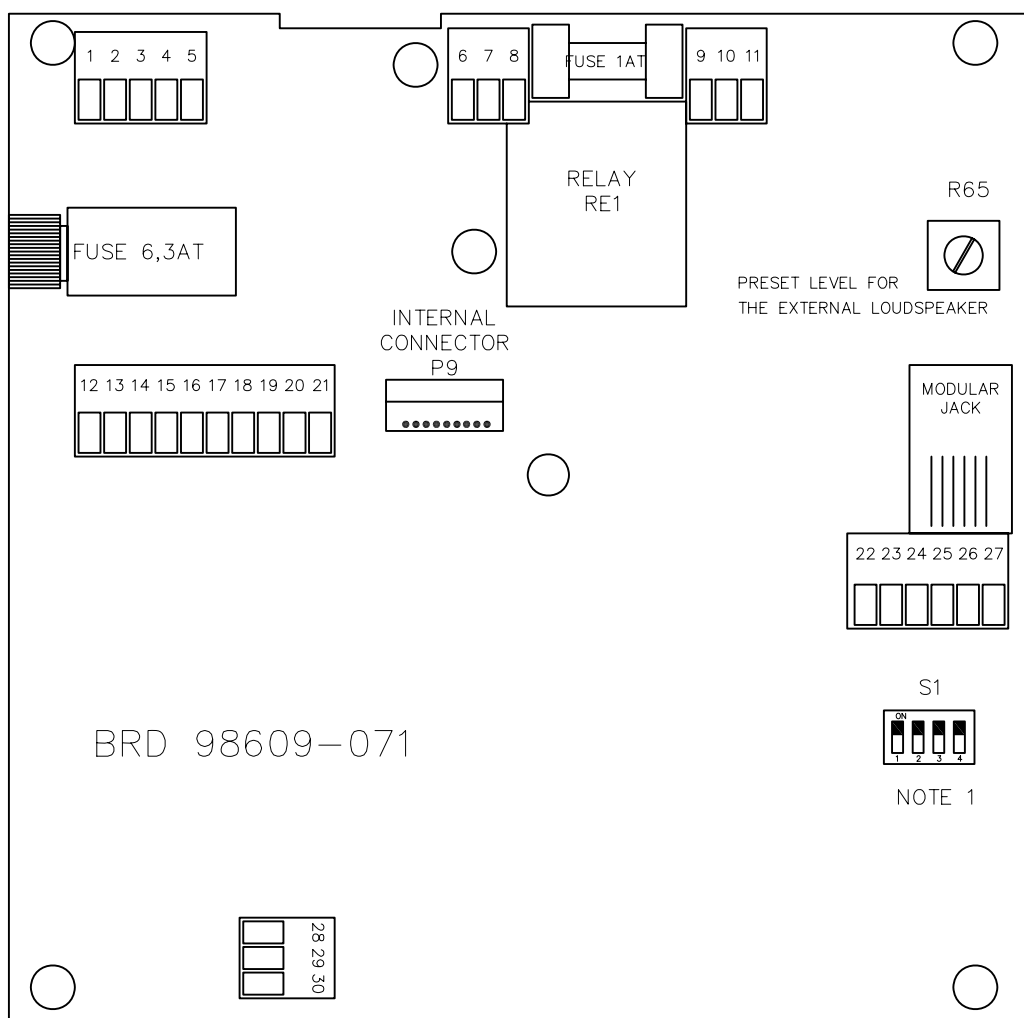
D

E

E

F

F



- |   |                                  |
|---|----------------------------------|
| 1 - P3.1 : Signal Device (In+ / NO)         | 16 - P8.5 : GP Output 1          |
| 2 - P3.2 : Signal Device (In- / --)         | 17 - P8.6 : GP Output 2          |
| 3 - P3.3 : Signal Device (Out+ / COM)       | 18 - P8.7 : REF GP Input 1       |
| 4 - P3.4 : Signal Device (Out- / --)        | 19 - P8.9 : GP Input 1           |
| 5 - P3.5 : Signal Device (NC / --)          | 20 - P8.10 : REF GP Output       |
| 6 - P4.1 : Power Supply Input +24VDC        | 21 - P8.11 : Not in use          |
| 7 - P4.2 : Power Supply Input 0V            | 22 - P12.1 : Handset Mic -       |
| 8 - P4.3 : Screen / GND                     | 23 - P12.2 : Handset Mic +       |
| 9 - P2.1 : External Loudspeaker -a          | 24 - P12.3 : Handset Earphone -a |
| 10 - P2.2 : External Loudspeaker -b         | 25 - P12.4 : Handset Earphone -b |
| 11 - P2.3 : Screen / GND                    | 26 - P12.5 : Not in use          |
| 12 - P8.1 : External Switch -a              | 27 - P12.6 : Not in use          |
| 13 - P8.2 : External Switch -b              | 28 - P13.1 : Line -a             |
| 14 - P8.3 : Not in use                      | 29 - P13.2 : Line -b             |
| 15 - P8.4 : Signal Device Activation Output | 30 - P13.3 : Screen / GND        |

**NOTE 1:**

SW 1 OFF = HOOKSWITCH DETECTION ENABLE  
SW 2-4 EXTERNAL MIC. SENSITIVITY ADJUSTMENT:

SW 2	SW 3	SW 4	SENSITIVITY	
ON	ON	ON	0 dB	(DEFAULT)
ON	OFF	OFF	-3 dB	
OFF	ON	ON	-6 dB	
OFF	ON	OFF	-9 dB	
OFF	OFF	ON	-12 dB	
OFF	OFF	OFF	-15 dB	

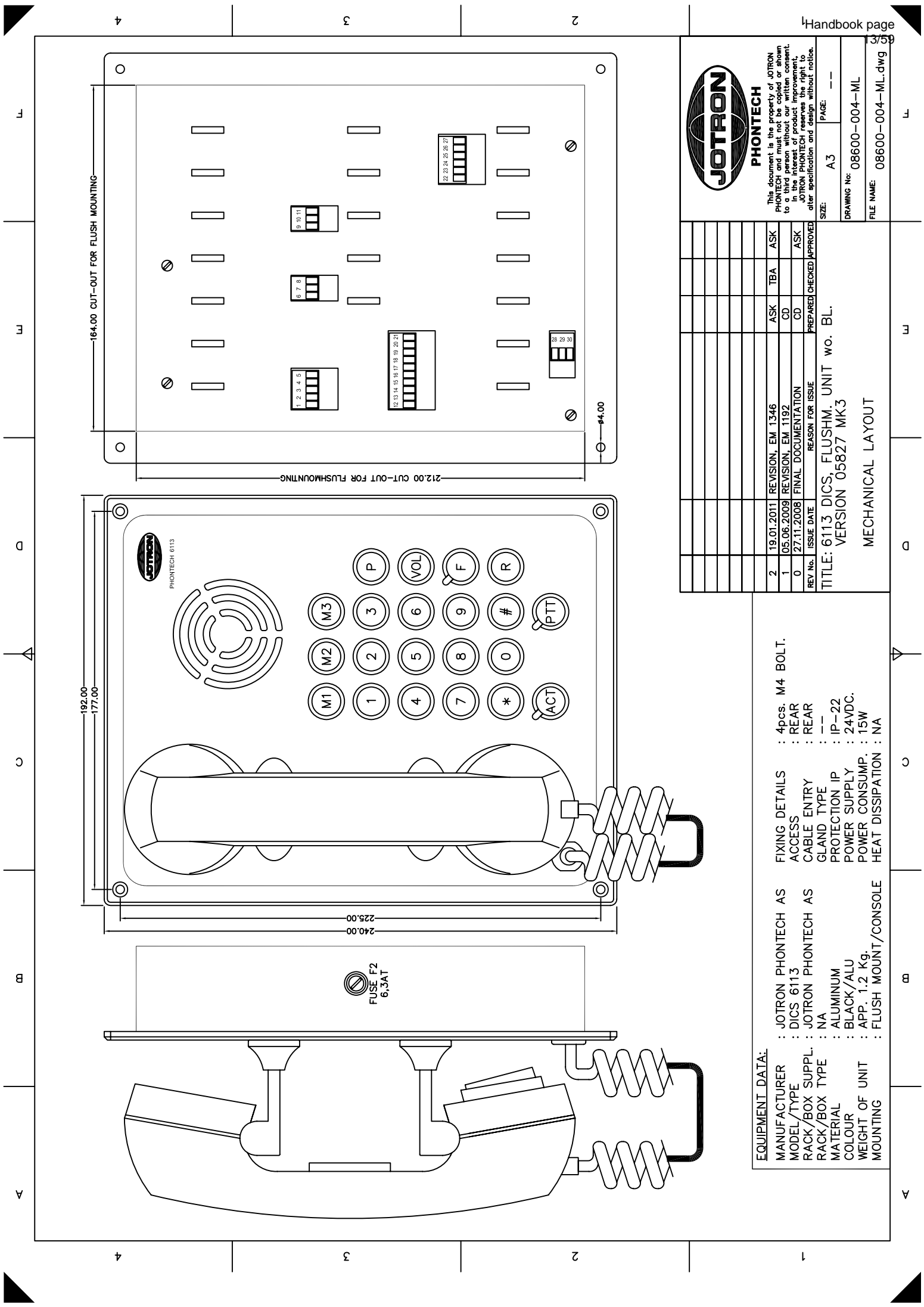
0	19.01.2011	DVM COMPLETION	ASK		ASK
REV No.	ISSUE DATE	REASON FOR ISSUE	PREPARED	CHECKED	APPROVED

TITLE: DICS 6112 - Ver. 05827  
WP UNIT WITHOUT HANDSET  
TERMINAL ARRANGEMENT.



This document is the property of JOTRON PHONTECH and must not be copied or shown to a third person without our written consent. In the interest of product improvement, JOTRON PHONTECH reserves the right to alter specification and design without notice.

SIZE: A4	PAGE: --
DRAWING No: 98609-065-TA	
FILE NAME: 98609-065-TA.dwg	



EQUIPMENT DATA:

MANUFACTURER	: JOTRON PHONTECH AS	FIXING DETAILS	: 4pcs. M4 BOLT.
MODEL/TYPE	: DICS 6113	ACCESS	: REAR
RACK/BOX SUPPL.	: JOTRON PHONTECH AS	CABLE ENTRY	: REAR
RACK/BOX TYPE	: NA	GLAND TYPE	: --
MATERIAL	: ALUMINUM	PROTECTION IP	: IP-22
COLOUR	: BLACK/ALU	POWER SUPPLY	: 24VDC.
WEIGHT OF UNIT	: APP. 1.2 Kg.	POWER CONSUMP.	: 15W
MOUNTING	: FLUSH MOUNT/CONSOLE	HEAT DISSIPATION	: NA

REV No.	ISSUE DATE	REASON FOR ISSUE	PREPARED	CHECKED	APPROVED
2	19.01.2011	REVISION, EM 1346	ASK	TBA	ASK
1	05.05.2009	REVISION, EM 1192	CD		
0	27.11.2008	FINAL DOCUMENTATION	CD		ASK

TITLE: 6113 DICS, FLUSHM. UNIT wo. BL.  
VERSION 05827 MK3  
MECHANICAL LAYOUT



PHONTECH  
This document is the property of JOTRON PHONTECH and must not be copied or shown to a third person without our written consent. JOTRON PHONTECH reserves the right to alter specification and design without notice.

SIZE:	A3	PAGE:	--
DRAWING No:	08600-004-ML		
FILE NAME:	08600-004-ML.dwg		

1

2

3

4

A

B

C

D

E

F

A

B

C

D

E

F

# DICS 6113 FLUSHMOUNTING UNIT (wo. BACKLIGHT)

CONNECTION TO  
DICS EXCHANGE  
610X

Ø 28 | LINE  
Ø 29 |  
Ø 30 SCREEN / GND

EXTERNAL LOUDSPEAKER | 9  
SCREEN / GND 11

LOUDSPEAKER  
Typ. 20 Ohms  
Max. 15W

R65 PRESET LEVEL FOR  
THE EXTERNAL LOUDSPEAKER

S1 NOTE 1

SIGNAL DEVICE POWER SUPPLY  
24VDC / 110VAC / 230VAC  
MAX 5A

INTERNAL  
CONNECTION:  
EXTERNAL  
SIGNAL  
DEVICE

1 (+)  
2  
3 (+)  
4  
5 NOT IN USE

SIGNAL DEVICE

ALTERNATIVE CONNECTION:

INTERNAL  
CONNECTION:  
EXTERNAL  
SIGNAL  
DEVICE

1 NO  
2 NOT IN USE  
3 COM  
4 NOT IN USE  
5 NC

GENERAL  
SENSOR  
SYSTEM

24 VDC POWER SUPPLY  
FOR EXTERNAL LOUD-  
SPEAKER AND RELAY

P4  
Ø 6 +24 V DC  
Ø 7 0 V  
Ø 8 SCREEN / GND

## NOTE 1:

SW 1 OFF = HOOKSWITCH DETECTION ENABLE  
SW 2-4 EXTERNAL MIC. SENSITIVITY ADJUSTMENT:

SW 2	SW 3	SW 4	SENSITIVITY	
ON	ON	ON	0 dB	(DEFAULT)
ON	OFF	OFF	-3 dB	
OFF	ON	ON	-6 dB	
OFF	ON	OFF	-9 dB	
OFF	OFF	ON	-12 dB	
OFF	OFF	OFF	-15 dB	

## NOTES:

### CABLE REQUIREMENTS:

TWISTED PAIR WITH OUTER SCREEN.  
RECOMMENDED CONDUCTOR AREA ALL  
CABLE TYPES: 0,75 sq.mm.

DO NOT COMBINE SIGNAL CABLES WITH  
OTHER CABLE TYPES SUCH AS MAIN  
SUPPLY.

THE CABLING FOR THIS SYSTEM SHOULD  
BE A SEPARATE NETWORK.

REV No.	ISSUE DATE	REASON FOR ISSUE	PREPARED	CHECKED	APPROVED
0	18.01.2011	DVM COMPLETION	ASK		ASK

TITLE: DICS 6113, FLUSHM. UNIT wo. BL.  
VERSION 05827 MK3  
EXTERNAL CONNNECTION



This document is the property of JOTRON  
PHONTECH and must not be copied or shown  
to a third person without our written consent.  
In the interest of product improvement,  
JOTRON PHONTECH reserves the right to  
alter specification and design without notice.

SIZE:	A3	PAGE:	--
DRAWING No:	08600-004-EC		
FILE NAME:	08600-004-EC.dwg		

1

2

3

4

A

A

B

B

C

C

D

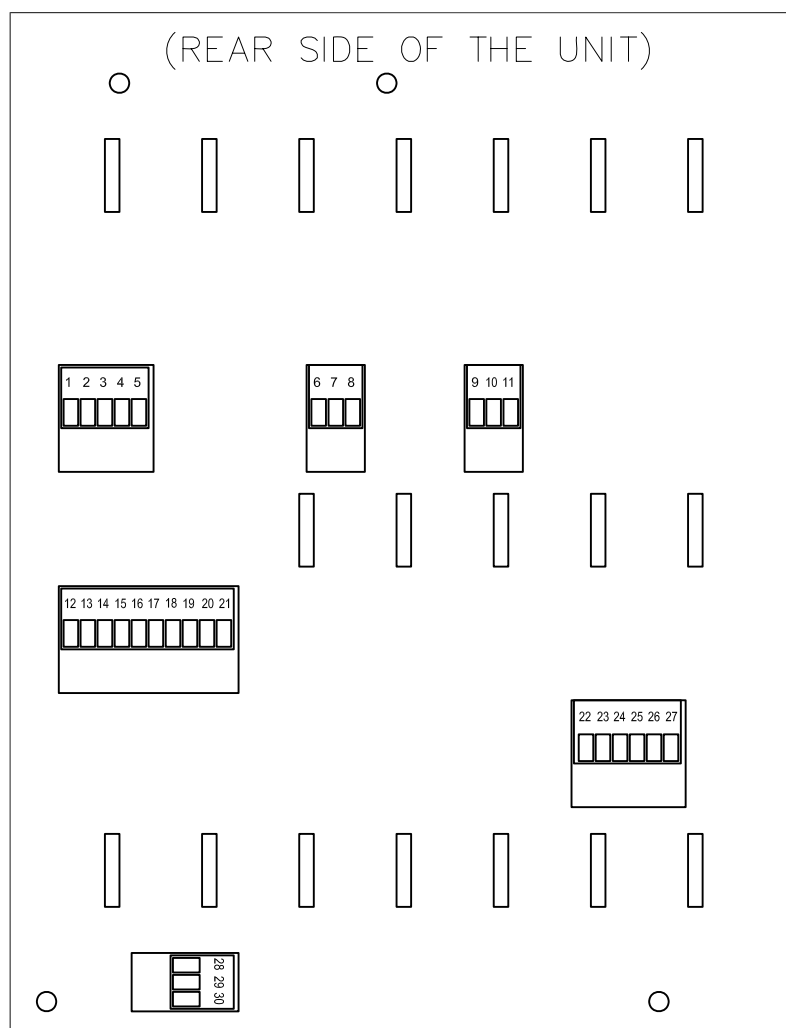
D

E

E

F

F



- |   |                                  |
|---|----------------------------------|
| 1 - P3.1 : Signal Device (In+ / NO)         | 16 - P8.5 : GP Output 1          |
| 2 - P3.2 : Signal Device (In- / --)         | 17 - P8.6 : GP Output 2          |
| 3 - P3.3 : Signal Device (Out+ / COM)       | 18 - P8.7 : REF GP Input 1       |
| 4 - P3.4 : Signal Device (Out- / --)        | 19 - P8.9 : GP Input 1           |
| 5 - P3.5 : Signal Device (NC / --)          | 20 - P8.10 : REF GP Output       |
| 6 - P4.1 : Power Supply Input +24VDC        | 21 - P8.11 : Not in use          |
| 7 - P4.2 : Power Supply Input 0V            | 22 - P12.1 : Handset Mic -       |
| 8 - P4.3 : Screen / GND                     | 23 - P12.2 : Handset Mic +       |
| 9 - P2.1 : External Loudspeaker -a          | 24 - P12.3 : Handset Earphone -a |
| 10 - P2.2 : External Loudspeaker -b         | 25 - P12.4 : Handset Earphone -b |
| 11 - P2.3 : Screen / GND                    | 26 - P12.5 : Not in use          |
| 12 - P8.1 : External Switch -a              | 27 - P12.6 : Not in use          |
| 13 - P8.2 : External Switch -b              | 28 - P13.1 : Line -a             |
| 14 - P8.3 : Not in use                      | 29 - P13.2 : Line -b             |
| 15 - P8.4 : Signal Device Activation Output | 30 - P13.3 : Screen / GND        |

## INTERNAL FACILITIES (Ref. 08600-004-EC)

SW 1 OFF = HOOKSWITCH DETECTION ENABLE  
SW 2-4 EXTERNAL MIC. SENSITIVITY ADJUSTMENT:

SW 2	SW 3	SW 4	SENSITIVITY
ON	ON	ON	0 dB
ON	OFF	OFF	-3 dB
OFF	ON	ON	-6 dB
OFF	ON	OFF	-9 dB
OFF	OFF	ON	-12 dB
OFF	OFF	OFF	-15 dB

(DEFAULT)

R65: PRESET LEVEL FOR THE EXTERNAL LOUDSP.

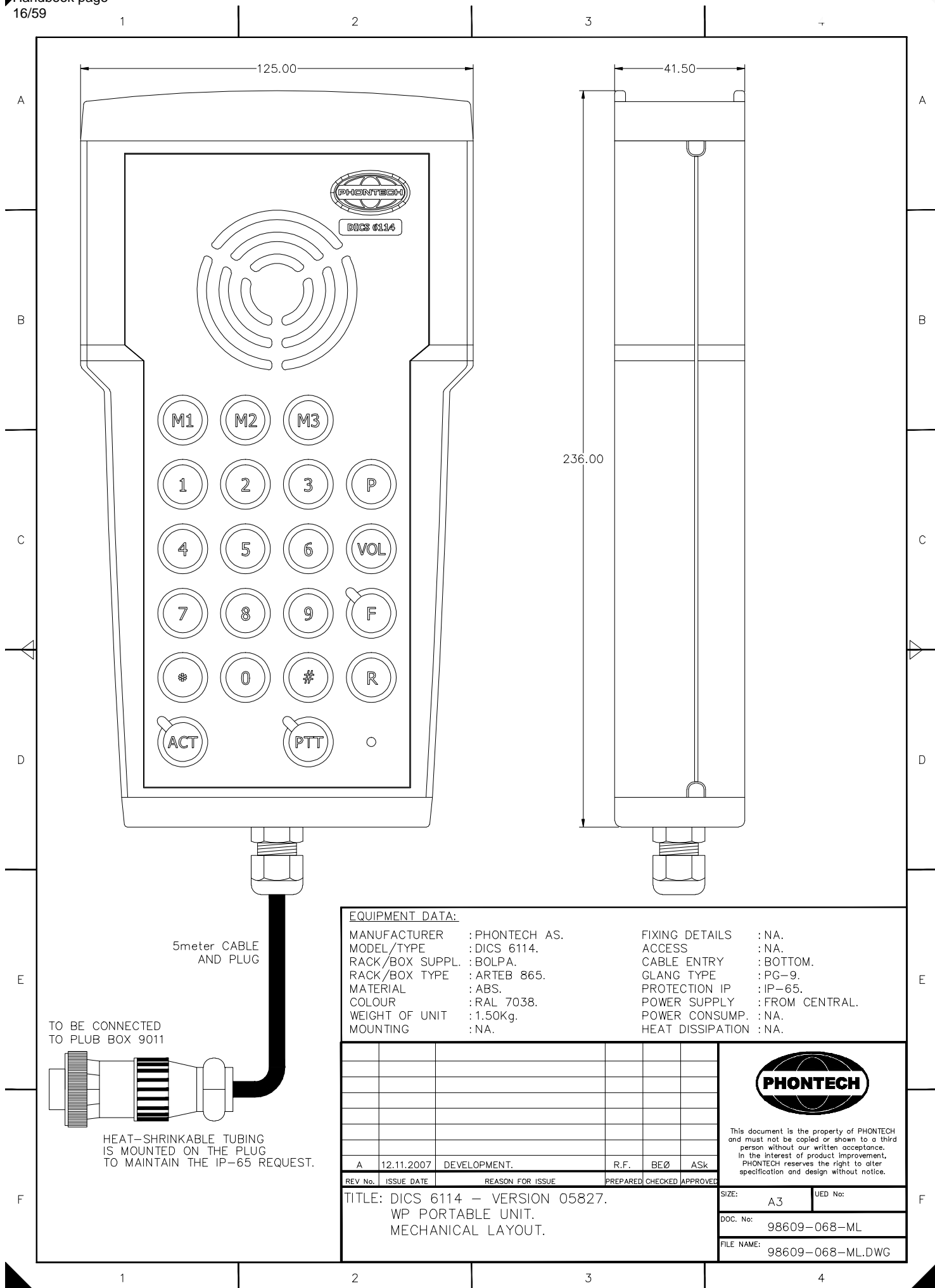
0	19.01.2011	DVM COMPLETION	ASK		ASK
REV No.	ISSUE DATE	REASON FOR ISSUE	PREPARED	CHECKED	APPROVED

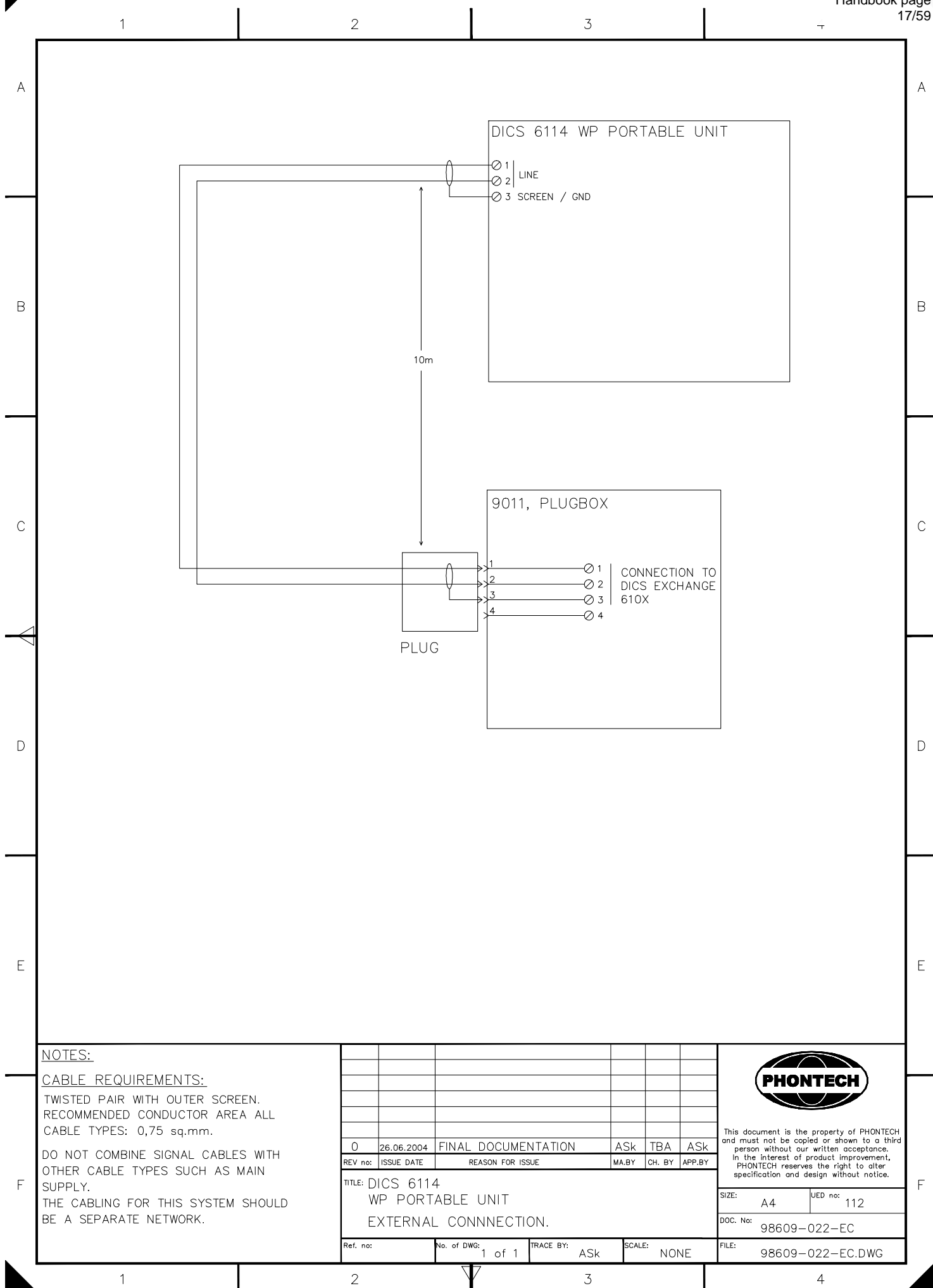
TITLE: DICS 6113, FLUSHM. UNIT wo. BL.  
VERSION 05827 MK3  
TERMINAL ARRANGEMENT.



This document is the property of JOTRON PHONTECH and must not be copied or shown to a third person without our written consent. In the interest of product improvement, JOTRON PHONTECH reserves the right to alter specification and design without notice.

SIZE: A4	PAGE: --
DRAWING No: 08600-004-TA	
FILE NAME: 08600-004-TA.dwg	





1

2

3

4

A

B

C

D

E

F

A

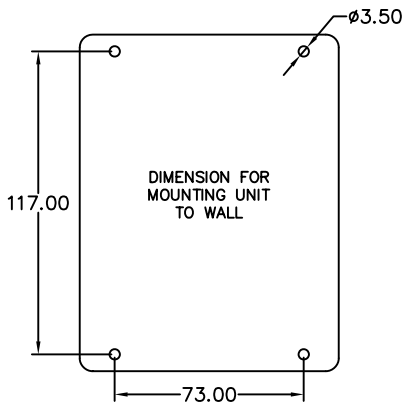
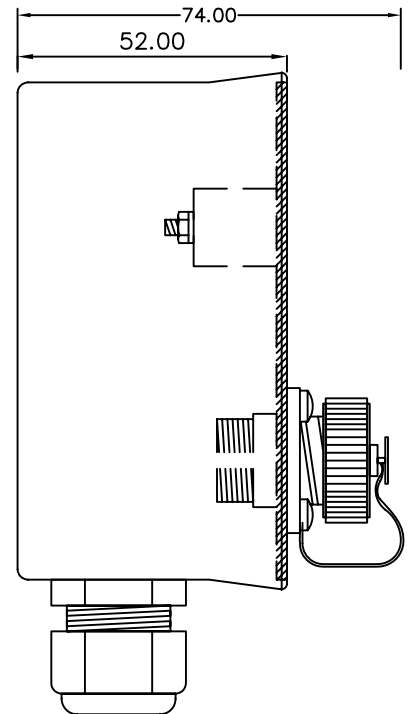
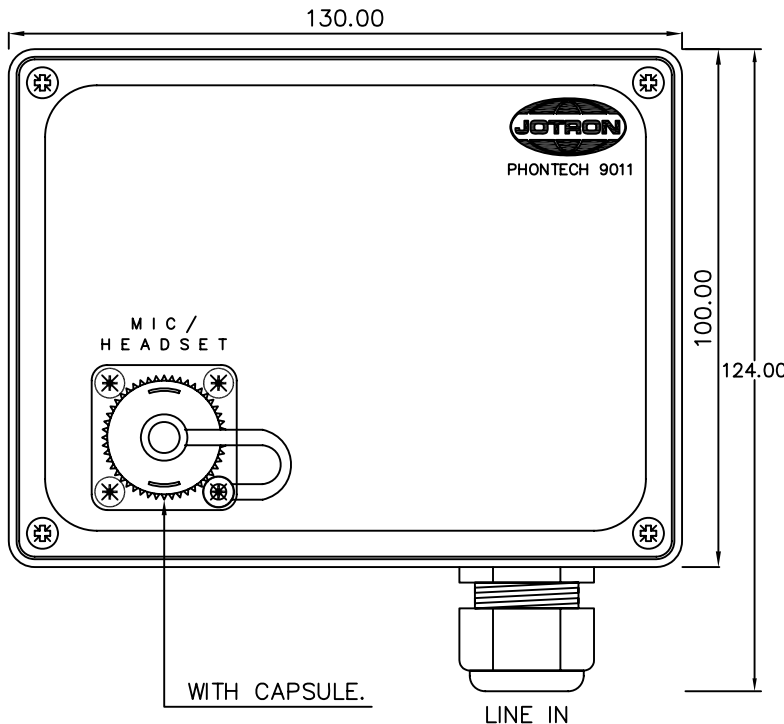
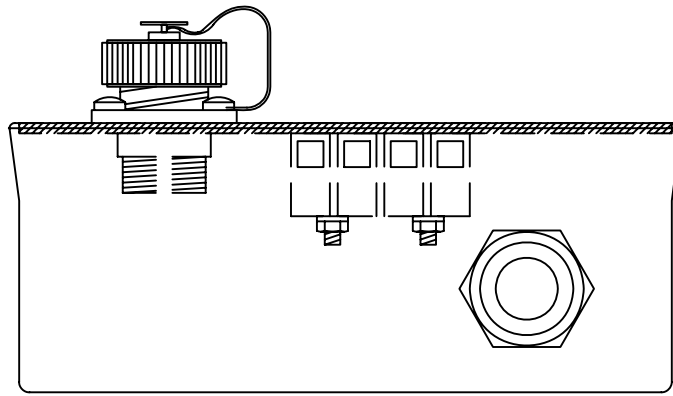
B

C

D

E

F



**EQUIPMENT DATA:**

MANUFACTURER : JOTRON PHONTECH AS.  
MODEL/TYPE : PLUGBOX.  
RACK/BOX SUPPL. : JOTRON PHONTECH AS.  
RACK/BOX TYPE : NA.  
MATERIAL : PC/ABS BLEND, ABS.  
COLOUR : RAL 9005/NATUR.  
WEIGHT OF UNIT : 0,3Kg.  
MOUNTING : TO WALL.

FIXING DETAILS : SEE INSIDE BOX.  
ACCESS : FRONT.  
CABLE ENTRY : BOTTOM.  
GLAND TYPE : 1pcs. M20.  
PROTECTION IP : IP-56.  
POWER SUPPLY : FROM CENTRAL.  
POWER CONSUMP. : NA.  
HEAT DISSIPATION : NA.

REV No.	ISSUE DATE	REASON FOR ISSUE	PREPARED	CHECKED	APPROVED
0	2010.09.24	DVM COMPLETION	ASK		ASK
A	2010.05.10	DEVELOPMENT.	CD		CD

TITLE: 9011, ABS - PLUGBOX.

MECHANICAL LAYOUT.



This document is the property of JOTRON PHONTECH and must not be copied or shown to a third person without our written consent. In the interest of product improvement, JOTRON PHONTECH reserves the right to alter specification and design without notice.

SIZE:	A3	UED No:	
DOC. No:	09908-005-ML		
FILE NAME:	09908-005-ML.DWG		

1

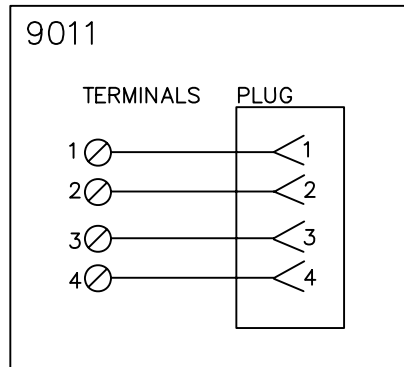
2

3

4



A



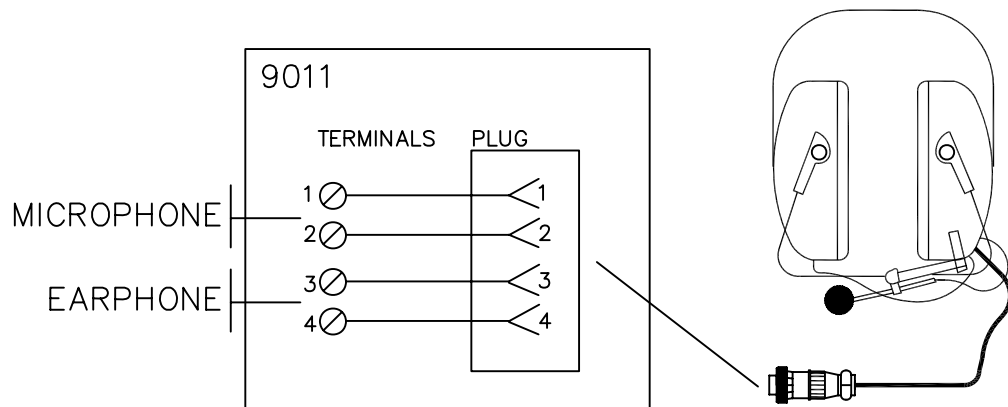
A

B

GENERAL PURPOSE

B

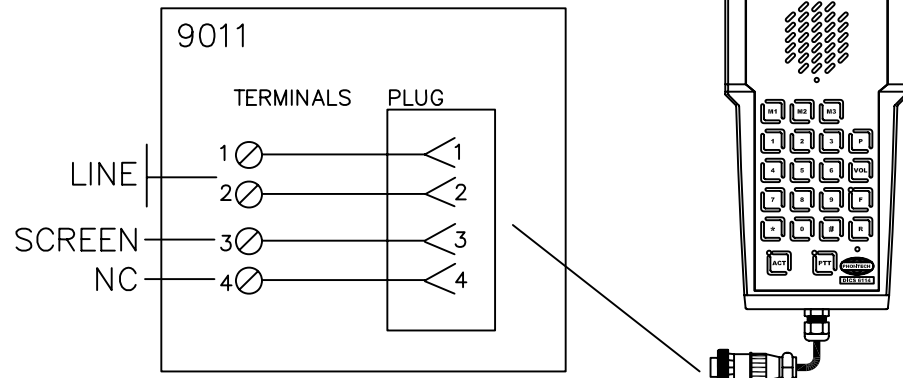
C



C

HEADSET / MICROPHONE

D



D

DICS 6114

E

0	2010.09.24	DVM COMPLETION	ASK		ASK
A	2010.05.07	DEVELOPMENT.	ASK		ASK
REV No.	ISSUE DATE	REASON FOR ISSUE	PREPARED	CHECKED	APPROVED

E

**PHONTECH**

This document is the property of JOTRON PHONTECH and must not be copied or shown to a third person without our written consent. In the interest of product improvement, JOTRON PHONTECH reserves the right to alter specification and design without notice.

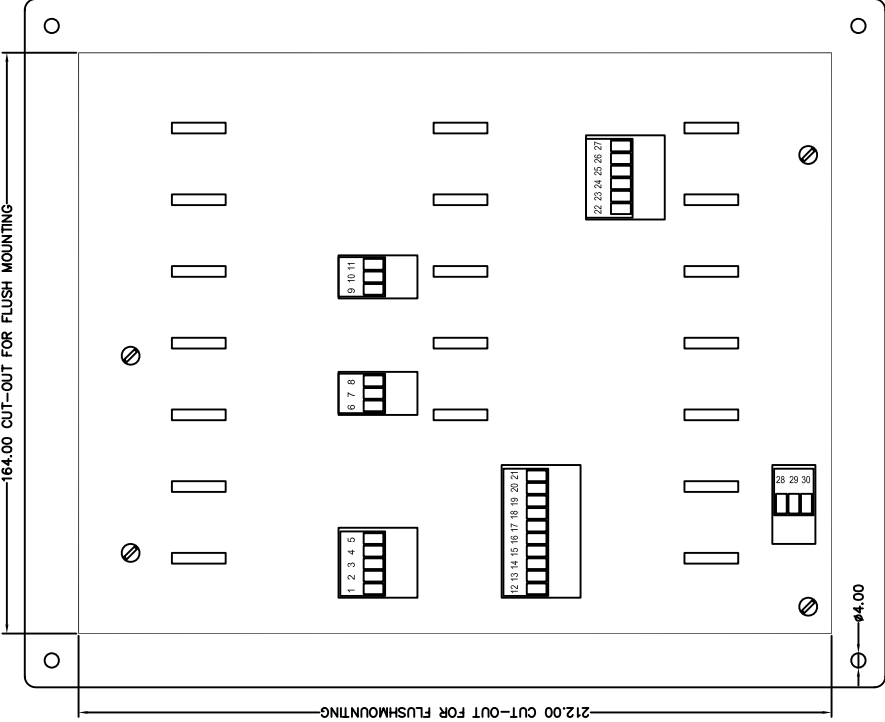
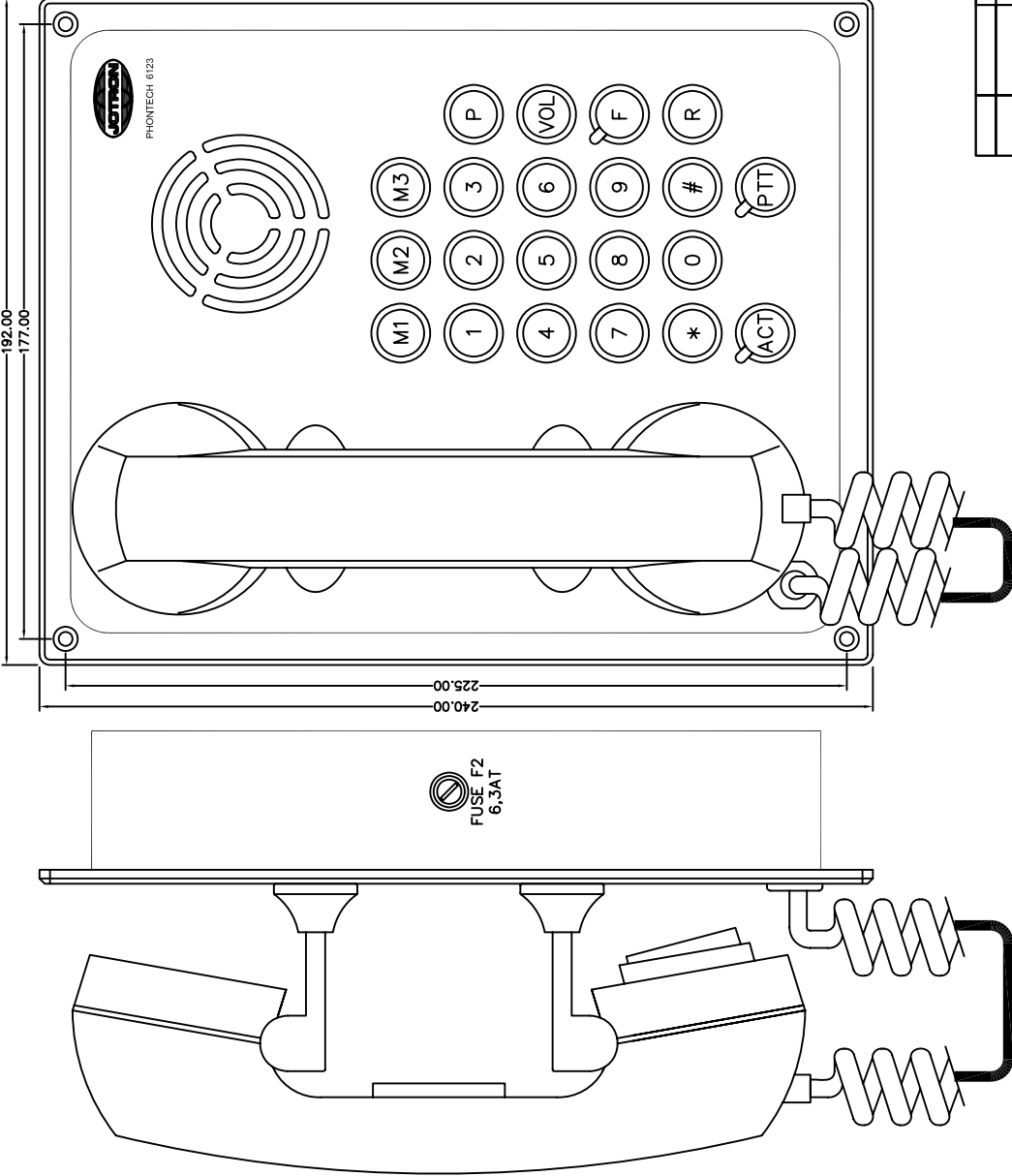
F

TITLE: 9011, ABS – PLUGBOX WEATHERPROOF

EXTERNAL CONNECTION

SIZE:	A4	UED No:
DOC. No:	09908-005-EC	
FILE NAME:	09908-005-EC.DWG	

F



EQUIPMENT DATA:

MANUFACTURER : JOTRON PHONTECH AS  
MODEL/TYPE : DICS 6123  
RACK/BOX SUPPL. : JOTRON PHONTECH AS  
RACK/BOX TYPE : NA  
MATERIAL : ALUMINUM  
COLOUR : BLACK/ALU  
WEIGHT OF UNIT : APP. 1.2 Kg.  
MOUNTING : FLUSH MOUNT/CONSOLE

FIXING DETAILS  
ACCESS : 4pcs. M4 BOLT.  
CABLE ENTRY : REAR  
GLAND TYPE : REAR  
PROTECTION IP : --  
POWER SUPPLY : IP-22  
POWER CONSUMP. : 24VDC.  
HEAT DISSIPATION : 15W  
NA



This document is the property of JOTRON PHONTECH and must not be copied or shown to a third person without our written consent. JOTRON PHONTECH reserves the right to alter specification and design without notice.

SIZE: A3  
PAGE: --  
DRAWING No: 08600-005-ML  
FILE NAME: 08600-005-ML.dwg

TITLE: 6123 DICS, FLUSHM. UNIT w. BL.  
VERSION 05827 MK3  
MECHANICAL LAYOUT

REV No.	ISSUE DATE	REASON FOR ISSUE	PREPARED	CHECKED	APPROVED
2	19.01.2011	REVISION, EM 1346	ASK	TBA	ASK
1	05.05.2009	REVISION, EM 1192	CD		
0	27.11.2008	FINAL DOCUMENTATION	CD		

1

2

3

4

**DICS 6123 FLUSHMOUNTING UNIT  
(with BACKLIGHT)**CONNECTION TO  
DICS EXCHANGE  
610XØ 28 | LINE  
Ø 29 |  
Ø 30 SCREEN / GNDEXTERNAL LOUDSPEAKER | 9  
SCREEN / GND 11LOUDSPEAKER  
Typ. 20 Ohms  
Max. 15WR65 PRESET LEVEL FOR  
THE EXTERNAL LOUDSPEAKER

S1 NOTE 1

SIGNAL DEVICE POWER SUPPLY  
24VDC / 110VAC / 230VAC  
MAX 5AINTERNAL  
CONNECTION:  
EXTERNAL  
SIGNAL  
DEVICE

1 (+)

2 (+)

3  
4  
5 NOT IN USE

SIGNAL DEVICE

ALTERNATIVE CONNECTION:

INTERNAL  
CONNECTION:  
EXTERNAL  
SIGNAL  
DEVICE

1

2 NOT IN USE

3

4 NOT IN USE

5

NO  
COM  
GENERAL  
SENSOR  
SYSTEM  
NC24 VDC POWER SUPPLY  
FOR EXTERNAL LOUD-  
SPEAKER, RELAY AND  
BACKLIGHTP4  
Ø 6 +24 V DC  
Ø 7 0 V  
Ø 8 SCREEN / GND**NOTE 1:**SW 1 OFF = HOOKSWITCH DETECTION ENABLE  
SW 2-4 EXTERNAL MIC. SENSITIVITY ADJUSTMENT:

SW 2	SW 3	SW 4	SENSITIVITY	
ON	ON	ON	0 dB	(DEFAULT)
ON	OFF	OFF	-3 dB	
OFF	ON	ON	-6 dB	
OFF	ON	OFF	-9 dB	
OFF	OFF	ON	-12 dB	
OFF	OFF	OFF	-15 dB	

**NOTES:****CABLE REQUIREMENTS:**TWISTED PAIR WITH OUTER SCREEN.  
RECOMMENDED CONDUCTOR AREA ALL  
CABLE TYPES: 0,75 sq.mm.DO NOT COMBINE SIGNAL CABLES WITH  
OTHER CABLE TYPES SUCH AS MAIN  
SUPPLY.THE CABLING FOR THIS SYSTEM SHOULD  
BE A SEPARATE NETWORK.

REV No.	ISSUE DATE	REASON FOR ISSUE	PREPARED	CHECKED	APPROVED
0	18.01.2011	DVM COMPLETION	ASK		ASK

TITLE: DICS 6123, FLUSHM. UNIT with BL.  
VERSION 05827 MK3  
EXTERNAL CONNECTIONThis document is the property of JOTRON  
PHONTECH and must not be copied or shown  
to a third person without our written consent.  
In the interest of product improvement,  
JOTRON PHONTECH reserves the right to  
alter specification and design without notice.SIZE: A3 PAGE: --  
DRAWING No: 08600-005-EC  
FILE NAME: 08600-005-EC.dwg

1

2

3

4

A

A

B

B

C

C

D

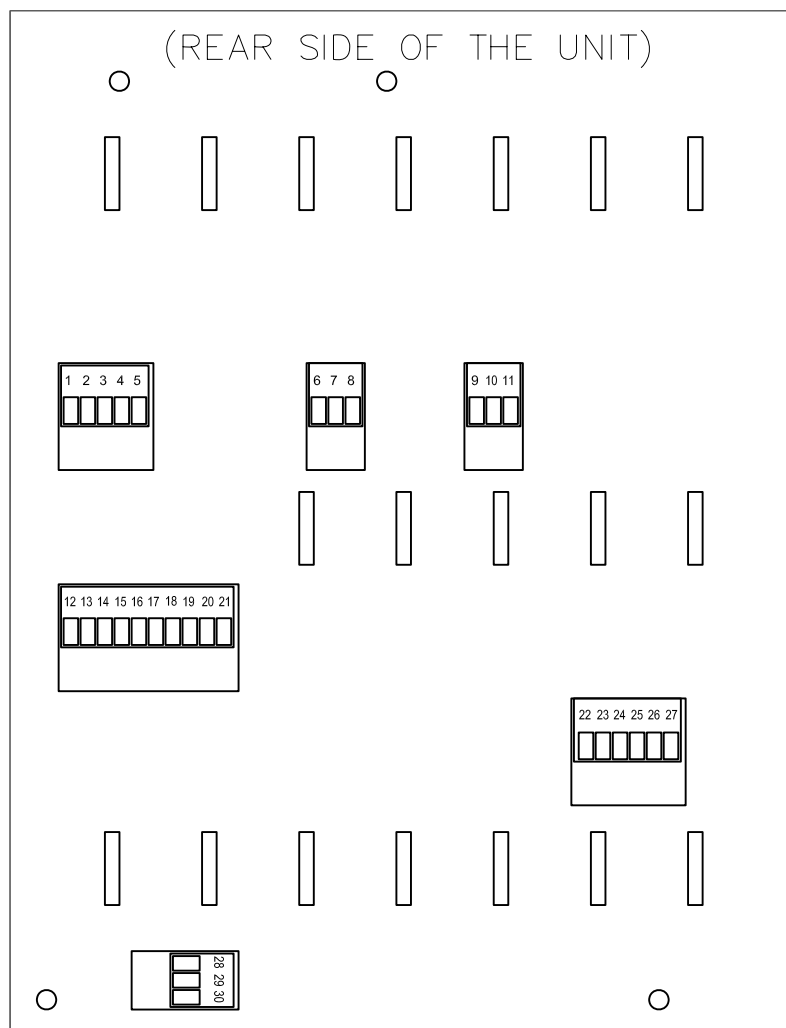
D

E

E

F

F



- |   |                                  |
|---|----------------------------------|
| 1 - P3.1 : Signal Device (In+ / NO)         | 16 - P8.5 : GP Output 1          |
| 2 - P3.2 : Signal Device (In- / --)         | 17 - P8.6 : GP Output 2          |
| 3 - P3.3 : Signal Device (Out+ / COM)       | 18 - P8.7 : REF GP Input 1       |
| 4 - P3.4 : Signal Device (Out- / --)        | 19 - P8.9 : GP Input 1           |
| 5 - P3.5 : Signal Device (NC / --)          | 20 - P8.10 : REF GP Output       |
| 6 - P4.1 : Power Supply Input +24VDC        | 21 - P8.11 : Not in use          |
| 7 - P4.2 : Power Supply Input 0V            | 22 - P12.1 : Handset Mic -       |
| 8 - P4.3 : Screen / GND                     | 23 - P12.2 : Handset Mic +       |
| 9 - P2.1 : External Loudspeaker -a          | 24 - P12.3 : Handset Earphone -a |
| 10 - P2.2 : External Loudspeaker -b         | 25 - P12.4 : Handset Earphone -b |
| 11 - P2.3 : Screen / GND                    | 26 - P12.5 : Not in use          |
| 12 - P8.1 : External Switch -a              | 27 - P12.6 : Not in use          |
| 13 - P8.2 : External Switch -b              | 28 - P13.1 : Line -a             |
| 14 - P8.3 : Not in use                      | 29 - P13.2 : Line -b             |
| 15 - P8.4 : Signal Device Activation Output | 30 - P13.3 : Screen / GND        |

## INTERNAL FACILITIES (Ref. 08600-005-EC)

SW 1 OFF = HOOKSWITCH DETECTION ENABLE  
SW 2-4 EXTERNAL MIC. SENSITIVITY ADJUSTMENT:

SW 2	SW 3	SW 4	SENSITIVITY	
ON	ON	ON	0 dB	(DEFAULT)
ON	OFF	OFF	-3 dB	
OFF	ON	ON	-6 dB	
OFF	ON	OFF	-9 dB	
OFF	OFF	ON	-12 dB	
OFF	OFF	OFF	-15 dB	

R65: PRESET LEVEL FOR THE EXTERNAL LOUDSP.

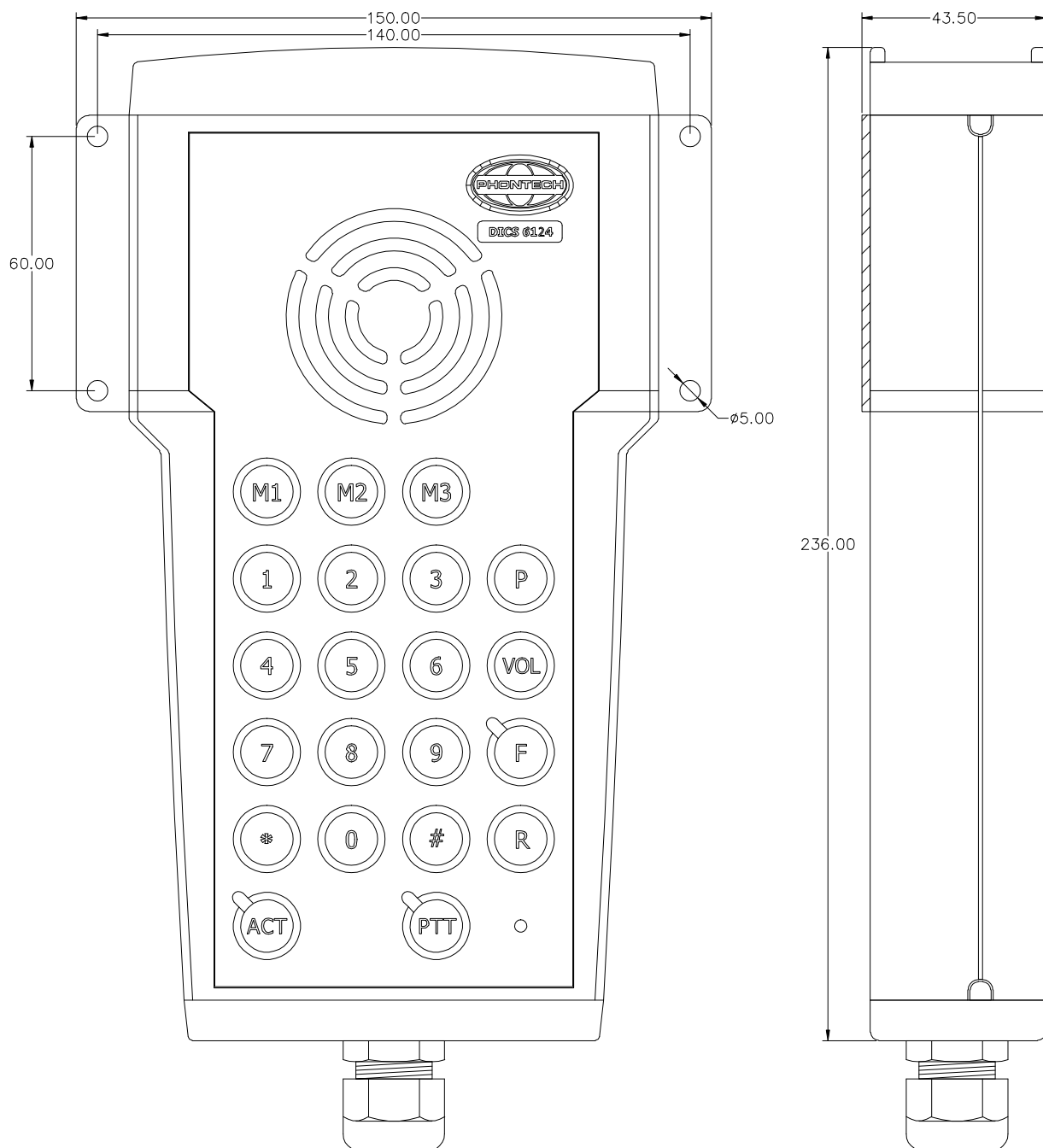
0	19.01.2011	DVM COMPLETION	ASK		ASK
REV No.	ISSUE DATE	REASON FOR ISSUE	PREPARED	CHECKED	APPROVED

TITLE: DICS 6123, FLUSHM. UNIT with BL.  
VERSION 05827 MK3  
TERMINAL ARRANGEMENT.



This document is the property of JOTRON PHONTECH and must not be copied or shown to a third person without our written consent. In the interest of product improvement, JOTRON PHONTECH reserves the right to alter specification and design without notice.

SIZE: A4	PAGE: --
DRAWING No: 08600-005-TA	
FILE NAME: 08600-005-TA.dwg	



**EQUIPMENT DATA:**

MANUFACTURER : PHONTECH AS.  
MODEL/TYPE : DICS 6124.  
RACK/BOX SUPPL. : BOLPA.  
RACK/BOX TYPE : ARTEB 865.  
MATERIAL : ABS.  
COLOUR : RAL 7038.  
WEIGHT OF UNIT : 1,50Kg.  
MOUNTING : TO WALL.

FIXING DETAILS : 4pcs. M4 BOLT.  
ACCESS : BOTTOM.  
CABLE ENTRY : BOTTOM.  
GLANG TYPE : PG-11.  
PROTECTION IP : IP-65.  
POWER SUPPLY : FROM CENTRAL.  
POWER CONSUMP. : NA.  
HEAT DISSIPATION : NA.

A	12.11.2007	DEVELOPMENT.	R.F.	BEØ	ASK
REV No.	ISSUE DATE	REASON FOR ISSUE	PREPARED	CHECKED	APPROVED



This document is the property of PHONTECH and must not be copied or shown to a third person without our written acceptance. In the interest of product improvement, PHONTECH reserves the right to alter specification and design without notice.

TITLE: DICS 6124 – VERSION 05827.  
WP BULKHEAD UNIT.  
MECHANICAL LAYOUT.

SIZE: A3 UED No:  
DOC. No: 98609-069-ML  
FILE NAME: 98609-069-ML.DWG

1

2

3

+

A

A

B

B

C

C

D

D

E

E

F

F

# DICS 6124 WP BULKHEAD UNIT

Ø 1 |  
Ø 2 | LINE  
Ø 3 SCREEN / GND

## NOTES:

### CABLE REQUIREMENTS:

TWISTED PAIR WITH OUTER SCREEN.  
RECOMMENDED CONDUCTOR AREA ALL  
CABLE TYPES: 0,75 sq.mm.

DO NOT COMBINE SIGNAL CABLES WITH  
OTHER CABLE TYPES SUCH AS MAIN  
SUPPLY.  
THE CABLING FOR THIS SYSTEM SHOULD  
BE A SEPARATE NETWORK.

0	25.06.2004	FINAL DOCUMENTATION	ASk	TBA	ASk	
REV no:	ISSUE DATE	REASON FOR ISSUE	MA.BY	CH. BY	APP.BY	
TITLE: DICS 6124 WP BULKHEAD UNIT EXTERNAL CONNNECTION.						
Ref. no:	No. of DWG:	1 of 1	TRACE BY:	ASk	SCALE:	NONE



This document is the property of PHONTECH  
and must not be copied or shown to a third  
person without our written acceptance.  
In the interest of product improvement,  
PHONTECH reserves the right to alter  
specification and design without notice.

SIZE: A4 UED no: 112  
DOC. No: 98609-028-EC  
FILE: 98609-028-EC.DWG

1

2

3

4

# snom 300

SIP based VoIP Phone

qualified for  
**Lync**



- **Backlit, two-line display (2x16 characters)**
- **4 identities (lines)**
- **27 keys, 7 LEDs**
- **6 programmable function keys**
- **Speakerphone**
- **Power over Ethernet (PoE)**
- **Ethernet switch**
- **XML Mini-Browser**

The IP telephone with the latest VoIP technology for the discerning caller! Ideal for ITSPs, offices, and private users.

As the basic model of the snom business telephone family, the SIP telephone **snom 300** fulfils the requirements of VoIP telephony and additionally offers numerous functions that are indispensable for everyday working life. Due to its excellent cost-performance ratio, it is ideal both for ITSP packages/products and for small and medium-sized enterprises, home offices, and private users.

The **snom 300** sets new standards when it comes to user-friendliness: A two-line LCD display shows call infor-

mation, and the menu-driven user interface provides simple feature management.

The **snom 300** is synonymous with effectiveness, time saving and flexibility: It provides all necessary office functionalities, for example choice of outgoing identity, "busy" indication, or picking up calls. Four different identities are possible.

Six user- or administrator-configurable (or carrier-preconfigurable) function keys can easily be allocated to arbitrary menu functions like DND, redirection, deny, etc., or assigned to multiple lines. The **snom 300** comes factory-equipped with two of its six

programmable keys configured as line appearances. You can configure up to all six function keys this way – flexible enough to suit the needs of every user.

Are you afraid of unsolicited eavesdroppers, data theft, or spam calls? Thanks to the **snom 300** you have no need to worry. Due to the security standards SRTP and SIPS, the **snom 300** is just as secure as the business model snom 320. This makes it perfectly suited for use in sensitive environments such as in banks and medical or military establishments.

# Technical Data **snom 300** qualified for **Lync**

## GENERAL FEATURES

- **Dimensions:**  
approx. 200 x 185 x 120 mm
- **Weight:** approx. 730 g
- **Certification** FCC Class B, CE Marking
- **Safety:** IEC 60950-1:2001
- **1 x LAN, 1 x PC:** RJ45 (Ethernet)
- **Power over Ethernet:** IEEE 802.3af, Class 1
- **Power:** PoE or 5V DC power supply listed in the user guide <sup>(1)</sup>
- **Ethernet:** 2x IEEE 802.3 10/100 Mbps switch
- **Handset:** 4P4C connector
- **Headset:** (wired) 4P4C connector; wireless via snom EHS Advanced <sup>(2)</sup>

## USER INTERFACE

- 2x16 character backlit display
- 27 keys, 6 programmable function keys with LEDs
- Menu-driven user interface
- Localization
- Selection of ring tones, VIP ring tones, integration of customized ring tones
- Call indication with LED
- LED indication for missed calls, waiting messages, and calls on hold
- Speakerphone
- Multiple audio device support
- Clock with automatic daylight-saving time
- Call timer

## CALL FEATURES

- 4 identities (lines)
- Directory with 100 contact entries
- Import/Export of Directory
- Speed dialing
- URL dialing
- Local dial plan
- Automatic redial on busy

- Call completion (Busy/Unreachable) <sup>(3)</sup>
- Caller identification (caller ID)
- Call waiting
- Auto answer
- Call blocking (deny list)
- Blocking of anonymous calls
- Lists of missed, received, and dialed calls
- Hold
- Music on hold <sup>(3)</sup>
- Handling of up to 4 calls simultaneously
- Blind and attended transfer
- Call forwarding
- 3-way conference on the phone
- Extension monitoring, call pickup <sup>(3)</sup>
- Call park, call unpark <sup>(3)</sup>
- Call completion <sup>(3)</sup>
- Multicast paging
- DND mode (do not disturb)
- Mute microphone
- Keyboard lock
- Client Matter Code (CMC) <sup>(3)</sup>
- Unified Communications ready

## WEB SERVER

- Embedded web server HTTP/HTTPS
- Remote configuration/provisioning
- Dial from web interface
- Password protection
- Diagnostics (tracing, logging, syslog)

## SECURITY, QUALITY OF SERVICE

- HTTPS (server/client)
- Transport Layer Security (TLS)
- SRTP (RFC3711), SIPS
- RTCP, S-RTCP
- VLAN (IEEE 802.1X)
- LLDP-MED

## CODECS, AUDIO

- G.711 A-law,  $\mu$ -law
- G.722, G.726, G.729A, G.723.1, G.727

- GSM 6.10 (full rate)
- Comfort noise, voice activity detection

## SIP

- RFC3261 compliance
- UDP, TCP and TLS
- Digest/basic authentication
- PRACK (RFC3262)
- Reliability of provisional responses (RFC3262)
- Early media support
- DNS SRV (RFC3263), redundant server support
- Offer/answer (RFC3264)
- Message Waiting Indication (RFC3842), subscription for MWI events (RFC3265)
- Dialog-state monitoring (RFC 4235)
- In-band DTMF/out-of-band DTMF/SIP INFO DTMF
- STUN client, ICE (NAT traversal)
- ENUM (RFC3261), NAPTR (RFC2915), rport (RFC3581), REFER (RFC3515)
- Bridged line appearance (BLA) <sup>(3)</sup>
- Auto provisioning with PnP <sup>(3)</sup>
- Busy lamp field support (BLF) <sup>(3)</sup>

## INSTALLATION

- Automatic software update
- Automatic settings retrieval via HTTP/HTTPS/TFTP with authentication
- Installation via web interface
- Remote management via TR-069/TR-111
- Static IP provisioning, DHCP
- NTP

<sup>(1)</sup> Available separately: Power supply PSAC10R-050 (snom PN 00002730)

<sup>(2)</sup> Available separately: snom EHS Advanced V2.0 (PN 00002362)

<sup>(3)</sup> If supported by PBX

### snom UK Ltd.

Amethyst House, Meadowcroft Way,  
Leigh Business Park  
Leigh, Manchester WN7 3XZ  
tel: +44 161 348 7500  
fax: +44 161 348 7509  
mail: uksales@snom.com

### snom technology Inc.

18 Commerce Way, Suite 6000  
Woburn, MA 01801  
tel: +1-781-569-2044  
fax: +1-781-569-2045  
mail: infoUSA@snom.com

### snom technology AG

Wittestr. 30 G  
13509 Berlin, Germany  
tel: +49 30 39833-0  
fax: +49 30 39833-111  
sip: info@snom.com  
mail: info@snom.com



## FEP-IP 4

### Flush-mounting Phone for VoIP

The flush-mounting phone FEP-IP4 is designed for using in a Voice-over-IP (VoIP) environment directly. Everywhere a highly available phone is required in a professional environment, FEP-IP4 is the solution:

- Integrated in control panels
- Used in naval architecture
- As emergency phone on the wall
- Integrated in sales booth with self-service for customer information
- In IT racks

FEP-IP4 fits to LAN directly. It uses the standard SIP protocol for the interconnection to a Soft-PBX.

For professional applications with highly available requirements there is an additional interface at the phone: A standard POTS-interface (analog tip/ring). So, if VoIP doesn't work, a connection to the public network remains on-line.

The dimensions of FEP-IP are identical with the long-time available FEP-2010, our flush-mounting phone for the POTS-line (analog tip/ring).

#### Version options of FEP-IP4:

- Handset with magnetic clamp for vertical installation.
- 4 Screw holes for wall or desk mounting. (Opening for assembly: L=260 x W=90 mm)
- Illuminated keypad
- One key only to start calling to a predefined destination (Without keypad).
- Handset with Push-to-Talk (PTT) or Push-to-Mute (PTM) key.
- Custom-specific dimensions and surface of the front.
- Helix cable for handset pluggable (RJ 10)

#### General features of the FEP-IP4:

- LAN-interface: Ethernet 100/10 Base-T(x) with IP-Protocol, RJ45 jack
- VoIP-signalling SIP (RFC 3261)
- Speech coding G.711
- Fallback: POTS interface (analog tip/ring)
- DTMF post-dialling according to CCITT Q.23 (RFC2833 or inband signalling)
- WEB-based configuration
- Optical call indication
- Switch off option for ringer (optical call indication only)
- 10 short-code dialling destinations
- Redialling
- Callback of unanswered calls (optical indication)
- Remote dialling using TCP/IP connection
- Option: Automatic call to a predefined destination after hook-off
- Option: Ringing only on tolerated callers
- Front surface / handset colour options :
  - grey (RAL 7032) / grey
  - beige (RAL 1015) / beige
  - black (RAL 9005) / black
  - Aluminium anodized natural (C1) / black
- Handset with helix cable, 4 wire, 30 cm length (other length on demand), hard-wired to FEP-IP4
- Dimension FEP-IP4 standard:
  - Outer diameter: L=280 x W=110 x H=50 mm
  - Opening for assembly: L=270 x W=100 mm
- PoE according to IEEE 802.3af (K1.0) or external 12V-/24V-DC power supply (3 W)

#### Add-ons for FEP-IP4:

- Plastic chassis for wall mount
- PoE injector



Fig. left: FEP-IP4 flush mounting phone

Fig. right.: FEP-IP4 phone with magnetic clamp for handset and wall-mount chassis



V 4.02 Subject to technical changes

## FEP-IP 4 with Display

### Flush-mounting phone for VoIP with additional features

#### Special features for FEP-IP4 with display:

- LCD-Display with backlight, 5 lines
- User menu with navigation over 4 keys
- Phone directory (100 destinations)
- Up to 15 keys for direct calls (user labeled)
- 2 status LED for direct calls (called, calling, waiting, lost call)
- Interface for headset
- Open listening
- Automatic call accept (Headset or open listening)
- Surface black RAL 9005
- Handset black
- Handset with helix cable, 4 wire, 30 cm length (other length optional), pluggable (RJ 10)
- Desk mount using 4 screw wholes
- Dimension FEP-IP with display:
  - Outer diameter: L=280 x W=190 x H=60 mm
  - Opening for assembly: L=260 x W=170 mm
- PoE according to IEEE 802.3af (K1.0) or external 12V-/24V-DC power supply (6 W)



Fig.: FEP-IP with display, keys for direct call and handset with magnetic clamp

#### Version options of FEP-IP4 with display:

- Handset with magnetic clamp for vertical installation.
- Handset with Push-to-Talk (PTT) or Push-to-Mute (PTM) key.
- Custom-specific dimensions and surface of the front.

## FEP - IP 19"

### Flush-mounting phone for 19" Racks

The flush-mounting phone FEP-IP 19" is designed for implementation in a control cabinet. Directly connected to a LAN switch this VoIP-phone is a perfect solution for phone calls in computing rooms

#### Special features FEP - IP 19":

- Surface black RAL 9005
- Handset black
- Dimension FEP-IP 19": 2HE
- PoE according to IEEE 802.3af
- Custom specific options on demand



Fig.: FEP - IP 19" for a control cabinet with custom specific options



# Weatherproof VoIP- Telephone FernTel IP

## VoIP-Telephone for indoor and outdoor use

- ▶ Protection degree IP 65 acc. to IEC60529
- ▶ Ambient temperature -20 °C to +60 °C
- ▶ Call tone  $\geq 95$  dB(A), 1 m
- ▶ Pixel-based, illuminated LCD Display
- ▶ Illuminated keypad
- ▶ Intelligent and user-friendly menu structure
- ▶ Standard H.323, SIP, TSIP, SIPS protocols
- ▶ Power supply Power over Ethernet
- ▶ Connection to 10/100-BASE-T Ethernet LAN, RJ-45

## Application

With approved technology of FHF, the FernTel IP is been suitable for all outside installations.

The new FernTel IP is the ideal telephone for many differential work areas – seawater, high air humidity, dust and not exactly gentle mechanical stress are no problem for it.

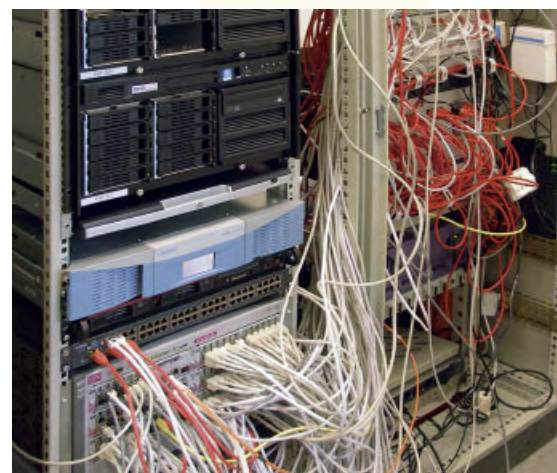
The stylish housing is made of impact-resistant and shockproof plastic moulding. Even acids, alkalis or lubricants cannot damage the high quality components of our versatile desk / wall telephone FernTel IP. Its modern design is the perfect “packing” for the finest high-tech.

Its striking signal colours ensure the FernTel IP cannot be missed whenever a telephone is urgently needed, e.g. in emergencies in poor weather and light conditions.

The FernTel IP is suitable for almost universal use thanks to its amazing transformability. A deft hand movement and the desk telephone for indoor use is converted into a wall telephone for outside use.

The FernTel IP makes possible effective working with high comfort. The illuminated keypad and display finish the comfort. The standardized features according to H.450 are supported. The Ethernet connectivity supports with the internal 2 port switch connecting a laptop in an outdoor area. The laptop gets a network access through the telephone. The FernTel IP offers qualitative high-grade features according to industrial standards instead of proprietary solutions.

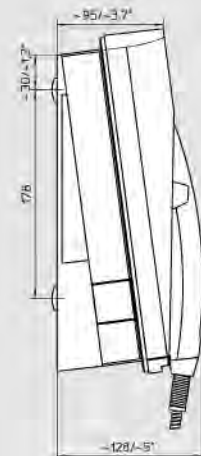
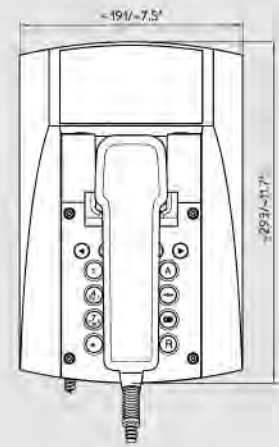
The FernTel IP is the ideal telephone for many differential work areas.





## Technical specifications

Housing	Polycarbonate
Housing Dimensions	height x width x depth 293 x 191 x 128 mm
Weight	approx. 2.3 kg
Protection Degree	Acc. to IEC60529 IP 65
Power Supply	Power over LAN (IEEE 802.3af)
Connection	2x RJ-45, Ports, 10/100-BASE-T Ethernet LAN
Ringing Volume	approx. 95 dB(A) at 1 m distance
Display	128 x 64 Pixel
Temperature Range	-20 °C to +60 °C
Protocol	H.323, SIP, TSIP, SIPS
total	H.323 version 4 incl. H.225, H.235, H.245 and RAS Gatekeeper routed Signalling, H.450 Session Initiation Protocol (SIP) RTP, SRTP Real Time Protocol
RTCP	Real Time Control Protocol – first level of Quality of Service
RAS Protocol	Support for External Gatekeeper
DTMF	H.245 Alphanumeric or Signal Type
Additional VoIP-Features	H.245 Fast Connect En-block dialling Overlapped Sending
Security	Password Protected Administration Encoded Password Authorization acc. to H.235
Quality of Service	Priority of IP-Packages acc. to TOS and DiffServ, VLAN Priority acc. to IEEE 802.1p / 802.1q
Voice Encoding	G.711 A-law / $\mu$ -law (64 kbps), G.723.1 (5.3 kbps), G.729A (16kbps)
Echo Compensation	G.168
Access	via HTML Web-Browser Password protected authentication
Troubleshooting	Log- and Trace-Files, State Display of Interfaces and Connections, Ping Connection Test sending of SNMP Traps over Internet Protocol
Update	Configuration recording/reading, Boot code and firmware update via HTML upload, Automatic update via Update-Server
DSL-Access	PPPoE Protocol
VPN	Tunnelling with PPTP Encoding via MPPE
NAT	Network Address Translation – for Transformation of official IP Addresses into private IP Addresses and vice versa
DHCP	Dynamic Host Configuration Protocol – IP interfaces settings
ICMP	Internet Control Message Protocol – for Ping tests
Dial Tone Generation	Automatic Dial tone Generation European and US Standard
Call Transfer	Call Transfer with/without consultation call
Call Diversion	Call Diversion Unconditional, Busy, No Reply
Call Hold / Retrieve	Call Hold / Retrieve
Call Waiting	Call Waiting inclusive Signalling of second Call Information
Message Waiting	Message Waiting Indication
Calling Name Identification	Name Display
3 Party Conference	3 Party Conference of internal and/or external Subscriber
Calling Number Identification	Display of Calling Number
Multiple Registrations	Up to 6 Registrations
Telephone Book	Local, Integration of an External Database
Time/Date	Exact Time and Date Information via Time Server





# ExResistTel IP2 Explosion-proof VoIP Telephone

## IP Telephone for indoor and outdoor use in zone 1 and 2

- ▶ IP 66 protection class as per IEC60529
- ▶ Ambient temperature range -40 °C to +60 °C (heated display)
- ▶ Ring signal  $\geq 95$  dB(A) at a distance of 1 m
- ▶ Pixel-based illuminated LCD display
- ▶ V4A alphanumeric keypad
- ▶ Web based monitoring (operating, handset, hands free, ringing)
- ▶ Intelligent, user friendly menu structure
- ▶ Standard protocols H.323, SIP, TSIP, SIPS
- ▶ Power supply: PoE or external supply
- ▶ Connection to 10/100-BASE-T Ethernet
- ▶ Hands free communication



## Application

Proven technology from FHF makes the ExResistTel IP2 suitable for all indoor and outdoor applications in hazardous areas.

The new ExResistTel IP2 is the ideal unit for all kinds of weather conditions at a wide variety of very diverse facilities – whether sea water, high humidity or extreme mechanical demands.

The housing is made of impact and shock resistant fiberglass-reinforced polyester. Even acids, alkalis or lubricants have no effect on the housing. Its robust design is the perfect “packaging” to meet the latest requirements demanded of VoIP telephones for use in hazardous areas. It is always available when a telephone is urgently needed, such as in emergency situations.

The ExResistTel IP2 makes work more effective by providing especially convenient telephone services.

An illuminated, heated display rounds out the convenience features of the ExResistTel IP2.

It also supports all features of the H.450 standard.

The ExResistTel IP2 offers high-quality features based on industry standards and our decades of experience.

A headset, available as accessory equipment, can be easily connected to the telephone. A handsfree function is also integrated into the unit.

## Ex-Telephone for outdoor facilities

Proven technology from FHF makes the ExResistTel IP2 suitable for all zone 1+2 applications.



## Features

Display	182 x 64 pixels
Protocols	H.323, SIP TSIP SIPS
General	H.323 version 4 including H.225, H.235, H.245 and RAS Gatekeeper routed signalling, H.450, Session Initiation Protocol (SIP) RTP, SRTP Real Time Protocol – for voice data transmission
RTCP	Real Time Control Protocol – first level of “Quality of Service”
RAS protocol	Support for an external gatekeeper
DTMF	H.245 “Alphanumeric” or “Signal Type”
Additional VoIP features	H.245 fast connect en-bloc dialing overlapped sending
Security	Encrypted password authentication as per H.235
Quality of Service	IP packet prioritization via TOS and DiffServ VLAN priority as per IEEE 802.1p / 802.1q
Audio codecs	G.711 A-law / $\mu$ -law (64 kbps), G.729A (16 kbps)
Echo compensation	G.168
Access	HTML via web browser Password protected with secure authentication
Troubleshooting	Log and trace files and status display of interfaces and connections Ping connection test for Internet Protocol, sending of SNMP traps
Updates	Configuration save and restore, Boot code and firmware updates via HTML upload Automatic updating via update server
DSL access	PPPoE protocol
VPN	Tunneling with PPTP encryption with MPPE
NAT	Network Address Translation – translates public IP addresses into private local address space addresses and vice versa
DHCP	Dynamic Host Configuration Protocol – sets up the IP interfaces
ICMP	Internet Control Message Protocol – for ping tests
Call signal generation	Automatic call signal generation as per European and US standards
Call transfer	Call Transfer in all common variants: with/without asking, before/after answering, etc.
Call diversion	Call Diversion / Redirection
Call hold	Call Hold / Retrieve
Call waiting	Call Waiting with corresponding signaling to calling party
Message	Telephone displays that a message is waiting
Pickup	Telephone displays that a call can be picked up
Pickup list	Telephone displays a list of calls that can be picked up
Name display	For signaling which name should be displayed
Call back	Call Completion with all common variants such as call back when busy and call back when free
3-way conference	With 3 parties, also external parties
Caller ID	For special signaling of individual phone numbers or phone number groups
Multiple registration	Maximum of 6 registrations
Telephone book	All registrations available automatically from central telephone book, External databases integrated via LDAP
Time	Precisely accurate time data via time server access

## Technical specifications

### Connection Data

Powered via Power over Ethernet  
as per IEEE 802.3af using the spare  
data lines or via external power supply

Voltage of external power supply	19.2 V - 52.8 V DC
Power consumption PoE (class 0)	12.95 W
Connection	Screw terminals (10/100 Mbit/s)
Ring signal volume	approx. 95 dB(A) maximum at a distance of 1 m
Housing (height x width x depth)	293 x 227 x 135 mm
Weight (standard model)	approx. 5.000 g
Display	182 x 64 pixels
Mounting position	Vertical wall mounting
Switching capacity of relay	250 V AC, 5 A 30 V DC, 5 A 50 V DC, 1 A 230 V DC, 0.5 A

### Handset

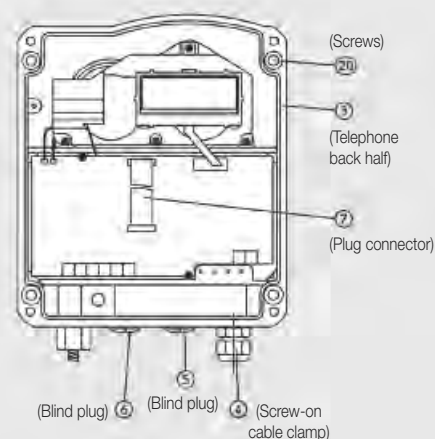
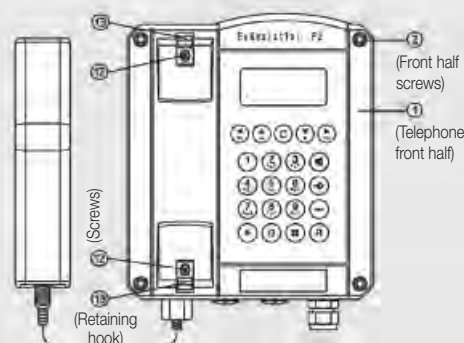
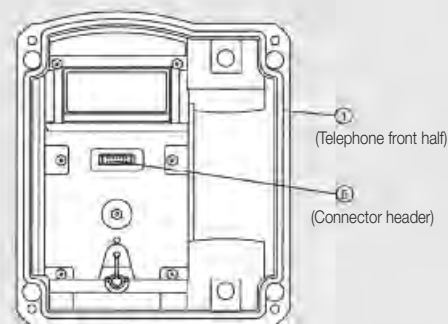
Voice capsule	Electret microphone
Earpiece capsule	Dynamic capsule with magnetic field generator
Handset securing mechanism in cradle	Standard equipment

### Environmental Conditions

Ambient operating temperature	-40 °C to +60 °C
-------------------------------	------------------

### Conformity

Protection class	IP 66 as per IEC 60529
Impact resistance	IK 09 as per EN IEC 62262:2002
Types of protection	II 2G Ex e ib [ib] mb IIC T4 Gb III 2D Ex ib [ib] tb IIIC T 135 °C Db

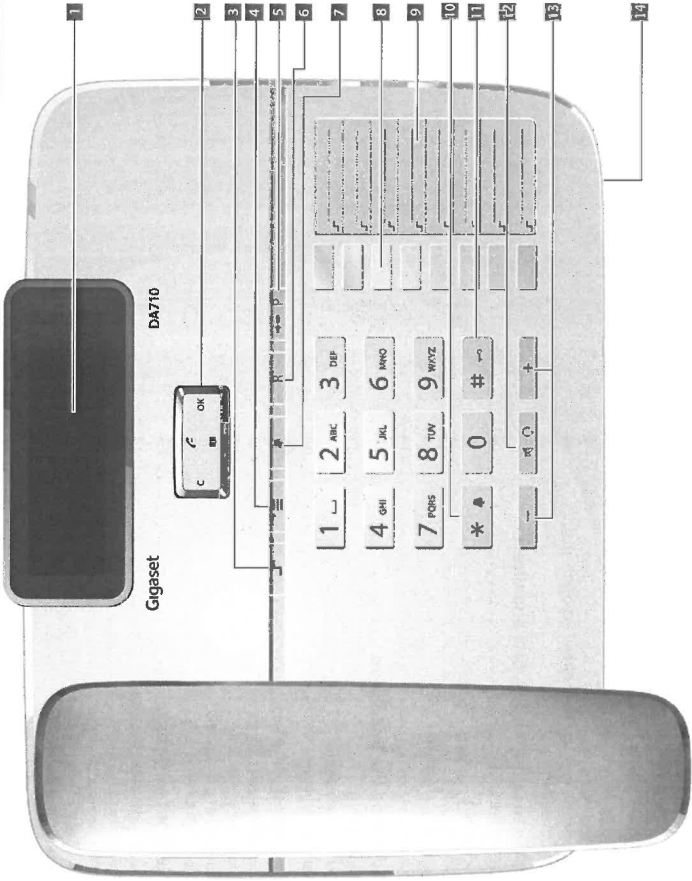


## Order information

Type	Designation	Housing Color	Art. No.
ExResistTel IP2	VoIP Telephone	Black	with relay contact 112 861 80

Subject to change without notice · Printout 06/14

Overview Gigaset DA710

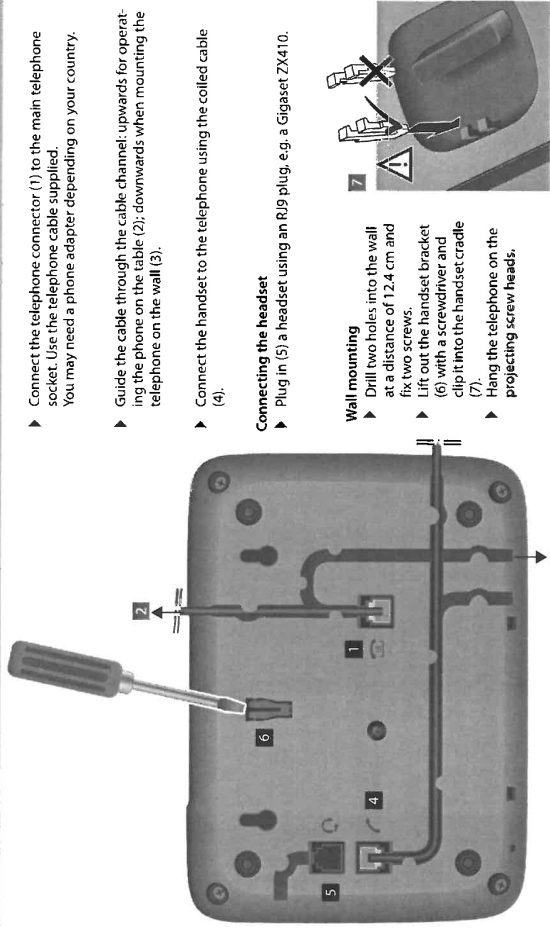


- Display and keys**
- 1 Adjustable display (Changing the language → page 11)
  - 2 Control key
  - 3 Shift key
  - 4 Menu key
  - 5 Redial/pause key
  - 6 Recall key
  - 7 Mute key
  - 8 Direct dial key
  - 9 Insert strip for writing the assignment of direct dial keys
  - 10 Star key, selecting/deselecting the ring tone (press and hold)
  - 11 Hash key, selecting/deselecting the key lock (press and hold)
  - 12 Hands-free/headset key
  - 13 Keys for setting the volume of the handset, headset, speaker and ring tone
  - 14 Microphone for hands-free
- LED**
- ▶ Hands-free/headset key
  - ▶ flashes on incoming call
  - ▶ lights up when the call is transferred to the speaker or headset
  - ▶ flashes when you hang up the handset, either if a new call or a new message has been received (Settings → page 11)

de en fr nl

1

Connecting the telephone



Notes

- ◆ **First use**
  - 1. Lift the handset for 5 seconds and place it back in the cradle.
  - 2. Lift the handset again. You will hear the free tone and the device is now ready to be used.

The phone is connected to the power source via the phone line. In case of a power cut (e.g. if the PBX is switched off at night), the above mentioned steps need to be repeated. Phonebook entries and speed dialling destinations are stored indefinitely.
- ◆ **The device is designed to be used as a single-line system (on the main extension or a telephone system).**

It cannot be operated as a second phone on a line splitter.
- ◆ **Operation on a PBX or router**

The private branch exchange (PBX) or the router must supply the phone with continuous DC voltage, even when ringing. If this is not the case, the phone may switch off briefly when ringing. As a result, saved information may be lost. Refer to the operating manual for your PBX or router for information in this regard or contact the manufacturer.

2

de en fr nl



## Table of contents

<b>Overview Gigaset DA710</b>	1
<b>Connecting the telephone</b>	2
Notes	2
<b>Safety precautions</b>	4
<b>Setting up the telephone for use</b>	4
<b>Operating the telephone</b>	4
Display	4
Control key	5
Writing and editing text	5
Menu	5
Phonebook, call list and redial list	5
Menu tree	6
<b>Telephoning</b>	7
Making a call	7
Incoming calls	8
Using open listening / hands-free / headset	8
Settings during a call	9
<b>Using the phonebook, lists and direct dial keys</b>	9
Phonebook	9
Call list (CLIP)	10
Last number redial list	10
Direct dial keys	10
<b>Adjusting the telephone</b>	11
Basic settings	11
Setting the volume	11
Setting the ringer	12
<b>Security settings</b>	12
Locking the telephone	12
Emergency calls	12
Direct calling (baby call)	13
Blocking numbers	13
<b>Network services</b>	13
Caller display (CLIP)	13
Call Divert	13
Other network services	13
Recall key	14
Setting up of dialling code	14

<b>Operation on a PABX</b>	14
Special functions/Recall key	14
Changing the dialling mode/flash time	14
Setting dialling prefixes	14
<b>Appendix</b>	15
Other settings	15
Predefined key combinations	15
Standard characters	16
Care	16
Contact with liquid	16
Questions and answers	16
Protecting our environment	16
Contacts	16
Disposal	16
Authorisation	16
<b>Index</b>	17

## Safety precautions

When installing, connecting and operating the telephone, always observe the following precautions:

- ◆ Only use the jacks and leads supplied.
- ◆ Only connect the connecting lead to the intended socket.
- ◆ Only connect the approved accessories, such as the Gigaset ZX410 headset for example.
- ◆ Your Gigaset DA710 has been tested and approved with the Gigaset ZX410 headset.
- ◆ Other headsets may only function to a limited extent or not at all. Be sure to reduce the volume of the Gigaset DA710 when connecting another headset. As a headset from another manufacturer may emit a harmful and loud acoustic signal due to alignment differences.
- ◆ Lay the connecting lead where it will not cause accidents.
- ◆ Position the telephone on a non-slip surface.
- ◆ For your safety and protection, the telephone may not be used in the bath or shower rooms (wet locations). The telephone is not splash proof.
- ◆ Never expose the telephone to sources of heat, direct sunlight or other electrical devices.
- ◆ Protect your telephone from moisture, dust, corrosive liquids and vapours.
- ◆ Never open up the telephone yourself.
- ◆ Do not touch the plug contact with pointed or metallic objects.
- ◆ Do not carry the telephone by the leads.
- ◆ If you give your Gigaset DA710 to someone else, make sure you also give them the operating manual. Your Gigaset DA710 has a permanent memory, so you may want to delete any stored numbers before passing it on.

## Setting up the telephone for use

- Recommended installation of telephone:**
- ◆ Do not expose the telephone to direct sunlight or other sources of heat.
  - ◆ Operate at temperatures of between +5° C and +40° C.
  - ◆ Maintain a distance of at least one metre between the telephone and radio equipment, e.g. radio telephones, radio paging equipment or TV sets. Otherwise telephone communication could be impaired.
  - ◆ Do not install the telephone in dusty rooms as this can limit the service life of the telephone.
  - ◆ Furniture lacquer and polish can be adversely affected by contact with parts of the unit (e.g. feet).

## Operating the telephone

The keypad and the display are available to operate your Gigaset DA710. In addition, the display menu together with the control key provides access to the configuration and use of the many functions of the telephone. All usage possibilities are described in the handbook.

### Note

- Some of your telephone's functions may only be available without restriction if they are supported by your and the caller's network provider, e.g. functions for which information on the caller's telephone number is required.
- This applies for the following functions, for example:
- ◆ Displaying the number of an incoming call (→ page 8)
  - ◆ Indicating a caller with VIP melody (→ page 8)
  - ◆ Call list (→ page 10)
  - ◆ Call forwarding and other network services (→ page 13)

### Display

In stand-by mode, the time, date and calendar week are displayed. You can set the date and time and the format in which it is displayed (→ page 11). Symbols on the display also provide information regarding the status of your telephone.



### Display symbols

- + Flashes for a new call in the call list if the caller's number transmission (CLIP) is active (→ page 13)
- Phonebook open
- Shift key pressed
- Key lock activated
- Ring tone switched off
- Flashes on incoming VIP call
- Is indicated if at least one entry with activated VIP mode is present in the phonebook (→ page 9).
- Mute mode activated
- Headset connected

Control key

The telephone's functions are activated and the menu is navigated using the control key. The functions offered depend on the operating situation.



- In menus and lists:**
  - Scrolls one entry upwards/downwards.
  - Hold down: Scrolls the list fast upwards/downwards.
- While editing names and numbers:**
  - Moves the cursor to the left/right.
  - Hold down: Moves the cursor fast to the left/right.
- While pressing the direct dial key:**
  - Displays long phone numbers completely.
- In menus, lists and with direct dial keys:**
  - Exits the menu, list or direct dial key.
- While changing settings:**
  - Terminates the action without changing the setting.
- While editing names and numbers:**
  - Deletes the character to the left of the cursor.
  - Hold down: Deletes the line.
  - If the entry is empty: Exits the editing mode.
- Phone number entered or direct dial key pressed:**
  - Dials the phone number.
- In menus and lists:**
  - Opens the submenu/context menu.
- While editing entries/changing settings:**
  - Saves the edits or activates the selected settings.

Writing and editing text

Multiple letters and numbers are assigned to each key between 1 and 9 and 0, \*, # and #. The entry of a specific character is carried out by pressing the corresponding key multiple times. You will find a table of applicable characters in the Appendix → page 16. To switch between capital letters (ABC), lower case (abc) and numbers (123), press the shift key [ ] until the desired figure is briefly displayed on the bottom right. This mode is not available in lines for telephone number entry.

Moving the cursor

Press the control key up/downwards in order to move the cursor to the left/right in the text.

Deleting/correcting characters

Press the left-hand side of the control key. The character to the left of the cursor is deleted. Press and hold down to delete the whole line.

Menu

The functions of your telephone are offered to you via a menu that consists of several levels.

- Press the [ ] key to open the menu.
- The menu functions and submenu functions where necessary are displayed in list form.
- Scroll with the control key [ ] to the required function and press the right-hand side of the control key [ ] (OK) to confirm your selection.
- Press [ ] in order to return to the previous menu level.
- Press the [ ] key to return to the start menu.

**Note**  
To exit the menu without saving any previous entries simply lift and then hang up the handset. After a short time the display will then once again show the standby mode.

Description of the menu selection steps

The steps to select a menu function are set out in these operating instructions as follows:

[ ] → Phone setup → Language

- This is accessed as follows:
  - Open the menu using the [ ] key.
  - Using the control key [ ] select the entry **Phone setup** and press the right-hand side of the control key [ ] (OK).
  - Using the control key [ ] select the entry **Language** and press the right-hand side of the control key [ ] (OK).

Phonebook, call list and redial list

Phonebook, call list and redial list can be opened using the menu or keys.

Using the menu

- Press the [ ] key to open the menu.
- Select **Call list (CLIP)** or **Phonebook** or **Redial** in order to open the desired list.

Using keys

- Open the call list using the control key [ ]
- Open the phonebook using the control key [ ]
- Open the redial list.

The first list entry will be displayed in each case.

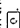
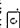
- Scroll with the control key [ ] to the desired entry and press the right-hand side of the control key [ ] (OK) to open the context menu.

Menu tree




The complete menu tree of the display menu is depicted below.

Call list (CLIP)	Entry 1- 50	Call back	→ page 7		
		Save number	→ page 10		
		Delete entry	→ page 10		
		Delete all	→ page 10		
Phonebook	New entry		→ page 9		
	Entry 1-100	Dial entry	→ page 7		
		Edit entry	→ page 9		
		New entry	→ page 9		
		Delete entry	→ page 9		
		Delete all	→ page 9		
Security	Change PIN		→ page 12		
	Key lock		→ page 12		
	Emergency		→ page 13		
	Direct call		→ page 12		
	Call block		→ page 13		
Phone setup		Language	→ page 11		
		Date/time	→ page 11		
		Dial mode	→ page 14		
		Flash time	→ page 14		
		PABX code	→ page 14		
		Date/Time format	→ page 11		
		Area code	→ page 14		
		Speaker LED	→ page 11		
Audio setup		Ring tones	→ page 12		
		VIP Melody	→ page 12		
		Handset Volume	→ page 11		
		Speaker Volume	→ page 11		
		Headset Volume	→ page 11		
		Mute mode	→ page 11		
		Ringer mode	→ page 12		
CLASS		Call Divert	→ page 13		
		CW Signal	→ page 13		
		Withhold number	→ page 14		
		Hotline	→ page 14		
		Ringback	→ page 14		
		Auto recall	→ page 14		
		Phonemail	→ page 14		
		Redial	Entry 1- 5	Dial entry	→ page 7
				Save number	→ page 10
				Delete entry	→ page 10
			Delete all	→ page 10	

Telephoning

In addition to the headset, you can also call using the speaker (hands-free function) or using a headset connected to the telephone (→ page 8). In the following instructions, the symbol  also always stands for .




Making a call


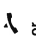

**Entering the telephone number using the keypad**  
 Dial the number, lift the handset.  
or  Lift the handset, dial the number.  
**Instead of lifting the handset:**  
 Press the hands-free/headset key to make a call via the speaker or the connected headset.  
You can switch over at any time during the conversation.

**Making a correction when entering the telephone number (only possible if the handset is in its cradle):**  
 Press the control key  to delete a digit entered in error to the left of the cursor.

Dialling from the phonebook


If you have already saved numbers in your phonebook (→ page 9), you can make a call directly from the phonebook.  
 → Phonebook





or  Open the phonebook using the control key   
**Searching an entry**  
 Select an entry.  
Hold down the top or bottom of the key to scroll fast in the list.

or  Enter letters (→ page 5). The first entry starting with this letter is displayed.  
**Dialling numbers**  
 Lift the handset.  
or  Open context menu.  
Select **Dial entry** and initiate the call using the speaker with **OK**. Lift the handset to make the call using the handset.

**Note**  
You can also first lift the handset before opening the phonebook.

Dialling from the call list


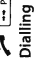

The call list contains the numbers of the last 50 incoming and outgoing calls. **Prerequisite:** Telephone number display is possible for incoming calls (→ page 13).  
Multiple calls from one number are only displayed once (with the information of the last call). If the number is saved to the phonebook or to the direct dial keys, the accompanying name is also displayed if present.  
 → Call list (CLIP)

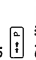


or  Open the call list using the control key   
**Dialling numbers**  
 Select the number or name.  
Lift the handset.  
or  Select the entry and open context menu with **OK**.  
Select **Call back** and initiate the call using the speaker with **OK**. Lift the handset to make the call using the handset.

**Note**  
You can also first lift the handset before opening the call list.

Last number redial

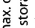
The last five numbers dialled are automatically saved (each a max. of 32 digits).

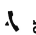


**Dialling the last saved number:**  
 Press the redial key, lift the handset.  
or  Lift the handset, press the redial key.  
**Dialling one of the last five numbers saved:**  
 → Redial

or  Press the redial key.  
**Dialling numbers**  
 Select the number.  
Lift the handset.  
or  Select the entry and open context menu with **OK**.  
Select **Dial entry** and initiate the call using the speaker with **OK**. Lift the handset to make the call using the handset.

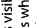
**Note**  
You can also first lift the handset before opening the redial list.

Dialling a number using the direct dial key

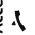

You can save 16 numbers to 8 direct dial keys and dial directly (two numbers can be allocated to each direct dial key, each with a max. of 32 digits). Use the shift key  to access the key's second storage area.  
The display symbol **I** indicates that the shift function is active.  
Saving and editing the direct dial keys is possible using the context menu of the direct dial key (→ page 10), from the phonebook, the call list and the redial list.

 Lift the handset, press the direct dial key.  
or  Press the direct dial key, lift the handset.  
or  Press the direct dial key and open the context menu with **OK**.  
Initiate the call over the speaker using the control key. Lift the handset to make the call using the handset.  
You can extend the selected number by entering additional digits.



Incoming calls

Incoming calls are indicated by the ring tone and in the display. For number displays (→ page 13), the number is visible in the display and the  symbol flashes. This symbol disappears when you answer the call or (if you don't answer) by calling up the call list.  
The name is also displayed for callers who are stored in the phonebook or on the direct dial keys with names.  
If the VIP mode is activated (→ page 12) the VIP symbol flashes in the display and the VIP ring tone signals the call.

Accepting a call

 Lift the handset.  
or  Press the hands-free key to accept the call via the speaker or the connected headset.


Call waiting

If the **Call waiting** service is activated (→ page 13), an incoming call is indicated during the conversation. You will hear the call waiting tone. The display shows the caller number if the number can be displayed, and the name if it is saved in the phonebook (→ page 9).  
 Press the callback key to accept the call. The first caller hears a wait melody.  
 Press the callback key again to end the second call and to return to the first call.

Using open listening / hands-free / headset


Switching open listening on/off

The persons present in the room can listen to the call over the speaker. During the call using the handset:

 Press the hands-free key to switch open listening on or off. When the speaker is switched on and the handset is picked up, open listening is switched on. In this case, the hands-free microphone is switched off.

When the speaker is switched on and the handset is in the cradle, hands-free via the hands-free microphone is switched on.


**Switching from open listening to hands-free:**

 Replace the handset whilst pressing the hands-free key.

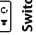
Switching the hands-free on/off

You can also make a call via the microphone with the handset in the cradle. The optimum distance from the microphone is approx. 50 cm.


Switching on hands-free during a call

 Replace the handset whilst pressing the hands-free key.

Switching on hands-free prior to dialling

 Hands-free key, wait for dial tone.

Switching off hands-free

 Lift the handset during the call. The call is transferred to the handset.


Ending a call

 Press the hands-free key during a call over the speaker.

**Note**  
Hands-free and open listening are not possible if a headset is connected.

Using a headset

Connect the headset (→ page 2). You can then make a call over the headset whilst the handset is in the cradle. (Please note the safety precautions → page 4).

 The telephone is operated using the hands-free/headset key in the same way as for the hands-free function (see above).

Once the headset is connected this is indicated in the display with the  symbol.

Settings during a call

The settings described below can also be changed in the menu (→ page 11).

Setting the handset/headset volume

There are three adjustable levels.  
[+]/[-] Set the volume using the volume up/volume down keys.  
The set volume is shown in the display.

Setting the speaker

There are seven adjustable levels.  
[+]/[-] Set the volume using the volume up/volume down keys.  
The set volume is shown in the display.

Mute

You can switch off the microphone or handset and microphone during a call according to the setting of the mute function (→ page 11):  
[M] Press the mute key to switch the mute function on or off.  
During muting of the microphone, a melody can be played.  
Once the telephone has been muted this is indicated in the display with the # symbol.

Ringer and volume

Whilst the telephone is ringing, the volume and ringer can be changed.  
[+]/[-] Set the ringer volume with the volume up/volume down keys (5 levels, 0=silent).  
[0] - [9] Select ringer with the numeric keys (10 different).

Using the phonebook, lists and direct dial keys


The following options are available on your telephone for storing your contacts and the incoming and outgoing calls:

- ◆ Phonebook with max. 100 entries
- ◆ Call list with the last 50 incoming calls
- ◆ Redial list with the last 5 outgoing calls
- ◆ Direct dial keys for storing 16 important numbers

Phonebook

Your Gigaset DA710 contains a phonebook in which you can save up to 100 entries, each with a maximum of 32 digits for numbers and 16 characters for names.

You can make a call (→ page 7), add new entries and manage and modify entries (→ page 9) using the **Phonebook**.

You can manually enter numbers and names or transfer them from the call list (→ page 10). You can also allocate **VIP mode** to a number. The  symbol is indicated in the display if the phonebook has been opened. In addition, the phonebook entry number is also indicated in the display (01...99, 00 is displayed for 100).

Opening phonebook

In standby:  Press the control key 

or

 → **Phonebook**


Searching an entry

Select an entry.  
Hold down the top or bottom of the key to scroll fast in the list.


or



Enter letters (→ page 5). The first entry starting with this letter is displayed.

Note  
If you press  the entry is set as a VIP entry or the setting is deleted.

Saving numbers

 → **Phonebook**

The first list entry is displayed.

Select **New entry** and confirm with **OK**.

Enter number and confirm with **OK**.

Enter name and confirm with **OK**.

The notice **Save to PBK?** appears in the display.

Either: **save in phonebook**

**OK** Confirm the saving of the entry in the **Phonebook**.

Select **VIP mode (On / Off)** and confirm with **OK**.

Or: **save to a direct dial key**

 / 

Press the desired direct dial key.

The notice **Saved** appears in the display.

Note  
You can save an entry first in the phonebook and then to a direct dial key.

Delete entry / Delete all

 → **Phonebook**

The first list entry is displayed.

Select the entry and open context menu with **OK**.

Select **Delete entry** or **Delete all** and confirm with **OK**.

Press the control key to confirm the action.

Edit entry

 → **Phonebook**

The first list entry is displayed.

Select the entry and open context menu with **OK**.

Select **Edit entry** and confirm with **OK**.

Change number and confirm with **OK**.

Change name and confirm with **OK**.

The notice **Save to PBK?** appears in the display.

Either: **save in phonebook**

**OK** Confirm the saving of the entry in the **Phonebook**.

Select **VIP mode (On / Off)** and confirm with **OK**.

Or: **save to a direct dial key**

 / 

Press the desired direct dial key.

The notice **Saved** appears in the display.



Call list (CLIP)

Incoming calls are saved if the number is transmitted (→ page 13). Up to 50 calls are saved. If the number is the same, only the last incoming call is saved. The oldest call is automatically deleted when there are more than 50 calls. If the caller is saved to the phonebook or to a direct dial key, the name is also displayed.  
You can use the call list for the following functions:

- ▶ Calling a number from the list (→ page 7).
- ▶ Saving in the phonebook or to direct dial keys.

Opening the call list

Open the call list in standby mode:

 Press the control key 

or

 → **Call list (CLIP)**

**Transferring a number from the call list to the phonebook/direct dial key**



Open the call list.

Select the entry and open context menu with **OK**.

Select **Save number** and confirm with **OK**.

Change number (if required) and confirm with **OK**.

Enter name and confirm with **OK**.

While editing numbers and names, move the cursor with 

Either: **save in phonebook**

**OK** Confirm the saving of the entry in the **Phonebook**.

Select **VIP mode (On / Off)** and confirm with **OK**.

Or: **save to a direct dial key**

 / 

Press the desired direct dial key.

The notice **Saved** appears in the display.

Delete entry / Delete all



Open the call list.

Select the entry and open context menu with **OK**.

Select **Delete entry** or **Delete all** and confirm with **OK**.

Press the control key to confirm the action.

Last number redial list

The last five numbers called are automatically saved (each a max. of 32 digits).


Opening the last number redial list

 Press the redial key.

or

 → **Redial**

**Transferring a number from the redial list to the phonebook/direct dial key**



Open the last number redial list.

Select the entry and open context menu with **OK**.

Select **Save number** and confirm with **OK**.

Change number (if required) and confirm with **OK**.

Enter name and confirm with **OK**.

While editing numbers and names, move the cursor with 

Either: **save in phonebook**

**OK** Confirm the saving of the entry in the **Phonebook**.

Select **VIP mode (On / Off)** and confirm with **OK**.

Or: **save to a direct dial key**

 / 

Press the desired direct dial key.

The notice **Saved** appears in the display.

Delete entry / Delete all



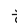
Open the last number redial list.

Select the entry and open context menu with **OK**.

Select **Delete entry** or **Delete all** and confirm with **OK**.

Press the control key to confirm the action.


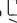
Direct dial keys

You can save up to 16 numbers on direct dial keys. Use the shift key  to access the keys' second storage area. The display symbol  indicates that the shift function is active.

You can also assign direct dial keys from the entries in the phonebook, in the call list or the redial list.

They can be used as function keys e.g. for call forwarding. Your network provider will notify you of the services and functions offered and the corresponding key sequences. The menu offers you additional optional settings for network services (→ page 13).

Saving numbers / Changing the allocation

 / 

Press the direct dial key that you want to assign with a number or the entry of which is to be changed.

**Empty** is displayed when the storage is empty.

If the key is already assigned you will see the saved number. For long numbers (more than 16 digits) switch between the display of digits 1-16 and 17-32 with the control key 

New entry

**OK** Switch to the entry mode with **OK**.

Changing the allocation

**OK** Open the context menu with **OK**.

Select **Edit entry** and confirm with **OK**.

Enter/change number and name

Enter/change number and confirm with **OK**.

Enter/change name and confirm with **OK**.



Direct calling (baby call)

When direct calling is activated, the stored number is dialled by pressing any key after lifting the handset (except for the keys and ).

Activating direct calling

→ Security → Direct call  
 Enter the direct calling number and confirm with OK.  
Direct calling is activated and indicated in the display.

Deactivating direct calling

Press the menu key.  
Enter PIN ( → page 12) and confirm with OK.  
Confirm the question **Disable direct?** with OK.

Blocking numbers

You can block phone calls to specific dialling codes (e.g. chargeable codes), max. 3 numbers with 5 digits each.

→ Security → Call block  
 Select Call block 1 (or 2 or 3) and confirm with OK.  
 Enter the call block number and confirm with OK.

Network services

Public telephone systems offer you – in some cases only on request – a range of helpful, additional services (e.g. call forwarding, callback when busy, withheld number, etc.). These services can be selected using specified key combinations, of which your network provider will notify you. These services can be called up and activated in the telephone menu and the corresponding key combinations can be set or adjusted if necessary.

A list with predefined key combinations can be found in the Appendix ( → page 15).

Caller display (CLIP)

If the caller display service is activated, an incoming call is shown on the display with the number and saved in the call list. **Prerequisite:** The network provider supports the following service features and the number transfer is not withheld by the caller:

- ◆ CLIP (Calling Line Identification): The caller's number is transferred.
- ◆ CLIP (Calling Line Identification Presentation): The caller's number is displayed.

You can transfer this number to the phonebook and edit it ( → page 9). If you have saved the local dialling code ( → page 14), a call with the same dialling code is automatically only displayed as the number without the dialling code.

Call Divert

- Call forwarding can be set up for three different conditions:
- ▶ All Calls (CFU, Call Forwarding Unconditional)
  - ▶ No Answer (CFNR, Call Forwarding No Reply)
  - ▶ When Busy (CFB, Call Forwarding Busy)

Activating call forwarding

→ CLASS → Call Divert  
Select **Activate** and confirm with OK.  
The conditions for call forwarding are displayed.  
Select the desired condition for call forwarding and confirm with OK.  
The key combination for initiating call forwarding is displayed.



Enter target number and confirm with OK.

The call forwarding for the selected condition is activated.

Deactivating call forwarding

→ CLASS → Call Divert  
Select **Deactivate** and confirm with OK.

The conditions for call forwarding are displayed.  
Select the desired condition for call forwarding and confirm with OK.  
The call forwarding for the selected condition is deactivated.

Other network services

Setting/changing key combinations for network services

If the preset key combinations for the network services do not match the information from your network provider, or if no key combination is preset, these can be changed or set in the corresponding network services menu.  
Your network provider will notify you of the key combinations - if offered.

→ CLASS  
 Select required network service.  
Press recall key.  
 Enter key combination for the network service and confirm with OK.

Use the shift key in the position, in which you are required to enter data.

**For example:** Call forwarding when busy is activated with \*67\* <number>#. You are required to enter data for <number>. Use the following key combination for the configuration:

CW Signal

If the call waiting function is available from your network provider and you activate it, an incoming call is signalled during the conversation ( → page 8).

→ CLASS → CW Signal

Select **Activate** / **Deactivate** and confirm with OK.

The signalling of an incoming call by call waiting is activated or deactivated.

Withheld number (anonymous call)

If you activate the withheld number function, your number will not be displayed for the person you are calling.

→ CLASS → Withheld number  
Select **Activate** / **Deactivate** and confirm with OK.  
The withheld number function is activated or deactivated.

Hotline

The network service Hotline allows a special number to be selected simply by lifting the handset, e.g. in case of emergency. This function is not available if it is not supported by your network provider.

→ CLASS → Hotline

Select **Activate** and confirm with OK.  
Enter target number and confirm with OK.

Select **Deactivate** and confirm with OK.

The network service Hotline is activated or deactivated.

Call back when busy

If you make a call but the person you are calling is already on the line, you can arrange an automatic callback as soon as the connection is free.

→ CLASS → Ringback

Select **Activate** / **Deactivate** and confirm with OK.

The callback is activated or deactivated.

Automatic callback

If your network provider supports **automatic callback** and you activate this function, the number of the caller who called you last while your line was busy will be dialled automatically.

→ CLASS → Auto recall

Select **Activate** / **Deactivate** and confirm with OK.

The automatic callback is activated or deactivated.

Network mailbox

If you use a network mailbox, the telephone display shows new incoming messages. The request for the mailbox can be started via the menu. You can also set the LED so that it lights up to indicate incoming messages ( → page 11).

→ CLASS → Phonemail

The network service number is selected.

Recall key

In public telephone systems the recall key (flash) is required for the use of various additional services; e.g. for "callback when busy". If necessary, the flash time on your telephone must be adjusted to the requirements of the telephone system ( → page 14).

Setting up of dialling code

If necessary you can change the default setting for the area code for your connection which is saved in the telephone. The number saved here is then used to display only the number of the person calling without area code in the call lists, provided that they have the same area code.

→ Phone setup → Area code

The default number is displayed.

Enter the new area code (max. 6 digits) and confirm with OK.

Operation on a PABX

Special functions/Recall key

During an external call, you can make an enquiry or forward the call. To do this, press the recall key . The subsequent procedure depends on your PABX. To set the recall key, the telephone's flash time must be set consistently with your PABX. Please refer to the operating instructions for your PABX.

Changing the dialling mode/flash time

The telephone supports the following dialling modes:

- ◆ Tone dialling
  - ◆ Pulse dialling
- Depending on your PABX, you may need to change your phone's dialling mode or the flash time. (Default setting: Tone dialling)

Changing the dialling mode

→ Phone setup → Dial mode  
 Select Tone or Pulse and confirm with OK.

Changing the flash time

You can change the flash time if the dialling mode is set to tone dialling (see above) (default setting 90 ms).

→ Phone setup → Flash time

Select flash time, the following values are available:  
90, 120, 270, 375, 600 ms and confirm with OK.

Temporary switch to tone dialling in "Pulse" position

To use functions that require tone dialling (e.g. remote control of answering machine), you can set the telephone to tone dialling for the duration of the call.

After the connection is established:

Press the star key.  
After the connection is terminated, the setting reverts to pulse dialling.

Setting dialling prefixes

If your phone is connected to a PABX, you may have to use a dialling prefix to make external calls. You can save up to three prefixes in your telephone.

If a dialling prefix is recognised during dialling, a dialling pause will automatically be applied. You can adjust the time of the dialling pause if necessary ( → page 15).

→ Phone setup → PABX code

The current setting is displayed.

Enter the dialling prefix (1 to 3 digits) and confirm with OK.




Use the control key to switch between the dialling prefixes:

Press the control key up/downwards in order to jump left/right

Appendix

Other settings

In addition to the options described in section **Adjusting the telephone** (→ page 11), you can perform further settings with the help of **Feature codes** (e.g. reset the factory settings). These are summarised in the following table.  
Default settings are displayed in **bold**, if there is no bold value for a setting, the presetting is country-dependent.

  Press the menu key and 1.  
 Enter the key sequence for the Feature code and confirm with **OK**.

Key sequence	Value	Description
02 0 1 2	1 s 3 s 0 s	Sets the length of the pause that can be inserted with the pause key
25 0 1 2	Restores all settings to the factory settings Deletes the contents of all programmable direct dial keys Restores all dialling codes Restores all network service codes Deletes all stored numbers (not Phonebook)	
50 0 1 2	Time display off 24 hour format 12 hour format	Sets the time format
57 0 1 2	Deactivate 500 ms/500 ms 30 ms/70 ms	Interval for the LED (hands-free/headset key) on incoming call
70 0 1	Deactivate Activate	Eliminates: click tone at the beginning or end of ringing. If network transmits only a very short ringing impulse, the click tone can be prevented by deactivating (setting 0) the setting.
83 0 1 2	Deactivate Activate Automatic	Withholds the first ringing. With this setting, it is possible to determine, if an incoming call comes from a VIP number, and to select a VIP ring tone instead of the normal ring tone.
88 1-9	Settings 1-11 1 = minimum contrast 5 = default setting 11 = maximum contrast	Sets the contrast of the display. Setting 10: Direct dial key 1 Setting 11: Direct dial key 2
91 0 1 2	1.5 : 1 2 : 1	Sets the pulse ratio for pulse dialling
92 0 1 2 3 4	85 / 85 ms 85 / 110 ms 85 / 140 ms 110 / 110 ms 70 / 70 ms	Sets signal time/signal pause for tone dialling
#2 0 1	Activate Deactivate	Updates time automatically according to CLIP information

de en fr nl

Standard characters

The following characters can be entered using the keypad:

Key	1x	2x	3x	4x	5x	6x	7x	8x	9x	10x	11x	12x	13x	14x
	1	2	3	4	5	6	7	8	9	0	*	#		
	a	b	c	d	e	f	g	h	i	j	k	l	m	n
	o	p	q	r	s	t	u	v	w	x	y	z	.	,
	;	'	!	@	#	\$	%	&	'	?	!	0	+	-
	*	/	(	)	<	=	>	%						
	#													

\*1) Space  
The mode for text entry is changed by repeatedly pressing the shift key . Change between capitals (ABC), lower case (abc) and digits (123). The mode is briefly indicated on the lower right of the display when switching. By selecting the (123) mode, you can enter digits directly by pressing the respective key once.

Care

Wipe the unit with a **damp cloth** or an **antistatic cloth**. Do not use solvents or microfibre cloths. **Never** use a dry cloth; this can cause static.

Contact with liquid

- 1 Allow the liquid to drain from the device.
- 2 Pat all parts dry. Place the device (the keypad facing down) in a dry, warm place **for at least 72 hours (not in a microwave, oven etc.)**.
- 3 **Do not switch on the device again until it is completely dry.**  
When it has fully dried out, you will normally be able to use it again. In rare cases, contact with chemical substances can cause changes to the telephone's exterior. Due to the wide variety of chemical products available on the market, it was not possible to test all substances.

Questions and answers

- You lift the handset, but don't hear the free tone:**  
Lift the handset for 5 seconds, put it back in the cradle and lift it again.
- You lift the handset but you hear no dialling tone:**  
Is the connecting lead correctly plugged into the telephone and the telephone socket?
- The dialling tone is audible but the telephone will not dial:**  
The connection is OK. Is the dialling mode set correctly?
- The other party cannot hear you:**  
Mute activated?

Regular pulse noises can be heard during a call:


The connection is receiving metering pulses from the exchange, which the telephone cannot interpret. Contact your network operator.

Protecting our environment

Our environmental statement

We at Gigaset Communications GmbH are aware of our social responsibility. That is why we actively take steps to create a better world. In all areas of our business - from product planning and production to sales and waste of disposal - following our environmental conscience in everything we do is of utmost importance to us. Learn more about our earth-friendly products and processes online at [www.gigaset.com](http://www.gigaset.com).

Environmental management system

 Gigaset Communications GmbH is certified according to the international standards ISO 14001 and ISO 9001. **ISO 14001 (Environment):** Certified since September 2007 by TÜV SÜD Management Service GmbH. **ISO 9001 (Quality):** Certified since 17/02/1994 by TÜV SÜD Management Service GmbH.

Contacts

If you should encounter any problems when operating the telephone connected to a communication system with analogue network access, please contact the network operator responsible or your dealer.

Disposal

 All electrical and electronic products should be disposed of separately from the municipal waste stream via designated collection facilities appointed by the government or the local authorities.

This crossed-out wheeled bin symbol on the product means the product is covered by the European Directive 2002/96/EC. The correct disposal and separate collection of your old appliance will help prevent potential negative consequences for the environment and human health. It is a precondition for reuse and recycling of used electrical and electronic equipment.

For more detailed information about disposal of your old appliance, please contact your local council refuse centre or the original supplier of the product.

Authorisation

This device is intended for analogue phone lines in the UK.  
Country-specific requirements have been taken into consideration. We, Gigaset Communications GmbH, declare that this device meets the essential requirements and other relevant regulations laid down in Directive 1999/5/EC.  
A copy of the 1999/5/EC Declaration of Conformity is available at this Internet address:  
[www.gigaset.com/docs](http://www.gigaset.com/docs)

CE 0682

de en fr nl

Index

**A** Answering machine ..... 14  
Authorisation ..... 16

**B** Baby call ..... 13  
Blocking dialling codes ..... 13  
Blocking numbers ..... 13

**C** Call forwarding ..... 13  
Call list ..... 10  
Dialling ..... 7  
Saving numbers ..... 10  
Callback ..... 14  
Automatic ..... 14  
Waiting ..... 14  
Caller display ..... 13  
Changing the dialling mode ..... 14  
Changing the PIN ..... 12  
CLI, CLIP ..... 13  
Contact with liquid ..... 16  
Control key ..... 5

**D** Date and time ..... 11  
Dialling ..... 7  
Number using the direct dial key ..... 8  
Telephone number ..... 7  
Dialling code ..... 14  
Dialling prefixes ..... 14  
Direct calling ..... 13  
Direct dial key ..... 1, 10  
Display functions ..... 5  
Display symbols ..... 4  
Disposal ..... 16

**E** Emergency calls ..... 12  
Entering characters ..... 5, 16

**F** Flash time ..... 14  
Function code ..... 15

**H** Hands-free ..... 8  
Hands-free/headset key ..... 1  
Headset ..... 8

**K** Key combinations, predefined ..... 15  
Key lock ..... 1, 12  
Keys ..... 1

**L** Language ..... 11  
Last number redial ..... 7  
LED ..... 1, 11

**M** Menu ..... 5  
Menu key ..... 1  
Menu tree ..... 6  
Mute ..... 9  
Mute key ..... 1

**N** Network mailbox ..... 14  
Network services ..... 13  
Key combinations ..... 13

**O** Open listening ..... 8

**P** Phonebook ..... 9  
Dialling ..... 7  
Editing ..... 9  
Saving numbers ..... 9  
Pulse dialling ..... 14

**R** Recall key ..... 1, 14  
Redial list ..... 10  
Dialling ..... 7  
Saving numbers ..... 10  
Redial/Pulse key ..... 1  
Reset/factory settings ..... 15  
Ringer ..... 9  
Setting ..... 12  
Switching off ..... 12

**S** Safety precautions ..... 4  
Saving ..... 9  
Number ..... 11  
Setting the volume ..... 11  
Handset ..... 9  
Headset ..... 9  
Speaker ..... 9  
Shift key ..... 1

**T** Telephone ..... 11  
Changing the language ..... 11  
Installing ..... 4  
Locking ..... 12  
Setting the date/time ..... 11  
Text entry ..... 5  
Tone dialling ..... 14

**V** VIP melody ..... 12

**W** Withheld number ..... 14





1

2

3

4

A

A

B

B

C

C

D

D

E

E

F

F

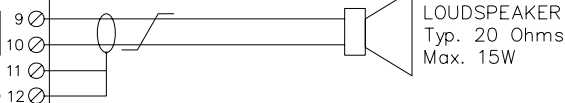
# 5113 BRIDGE CONSOLE TELEPHONE (wo. BACKLIGHT)

CONNECTION TO  
PBX EXCHANGE

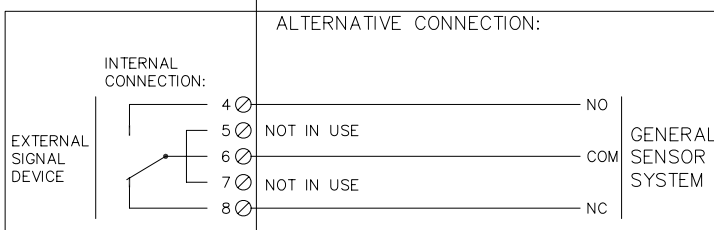
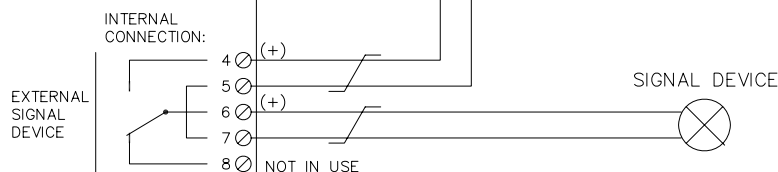
Ø 1 | LINE  
Ø 2 |  
Ø 3 | SCREEN / GND

EXTERNAL LOUDSPEAKER

SCREEN / GND 11  
SCREEN / GND 12



SIGNAL DEVICE POWER SUPPLY  
24VDC / 110VAC / 230VAC  
MAX 5A



24 VDC POWER SUPPLY  
FOR EXTERNAL  
LOUDSPEAKER

Ø 13 +24 V DC  
Ø 14 0 V  
Ø 15 SCREEN / GND

## NOTES:

### CABLE REQUIREMENTS:

TWISTED PAIR WITH OUTER SCREEN.  
RECOMMENDED CONDUCTOR AREA ALL  
CABLE TYPES: 0,75 sq.mm.

DO NOT COMBINE SIGNAL CABLES WITH  
OTHER CABLE TYPES SUCH AS MAIN  
SUPPLY.

THE CABLING FOR THIS SYSTEM SHOULD  
BE A SEPARATE NETWORK.

REV no:	ISSUE DATE	REASON FOR ISSUE	MA.BY	CH. BY	APP.BY
0	10.12.2009	FINAL DOCUMENTATION	HOT		
TITLE: PHONTECH 5113 BRIDGE CONSOLE TELEPHONE WO. BACKLIGHT EXTERNAL CONNECTION.					
Ref. no:	No. of DWG:	1 of 1	TRACE BY:	HOT	SCALE: NONE



This document is the property of PHONTECH  
and must not be copied or shown to a third  
person without our written acceptance.  
In the interest of product improvement,  
PHONTECH reserves the right to alter  
specification and design without notice.

SIZE: A4 UED no:  
DOC. No: 09514-001-EC  
FILE: 09514-001-EC.DWG

1

2

3

4

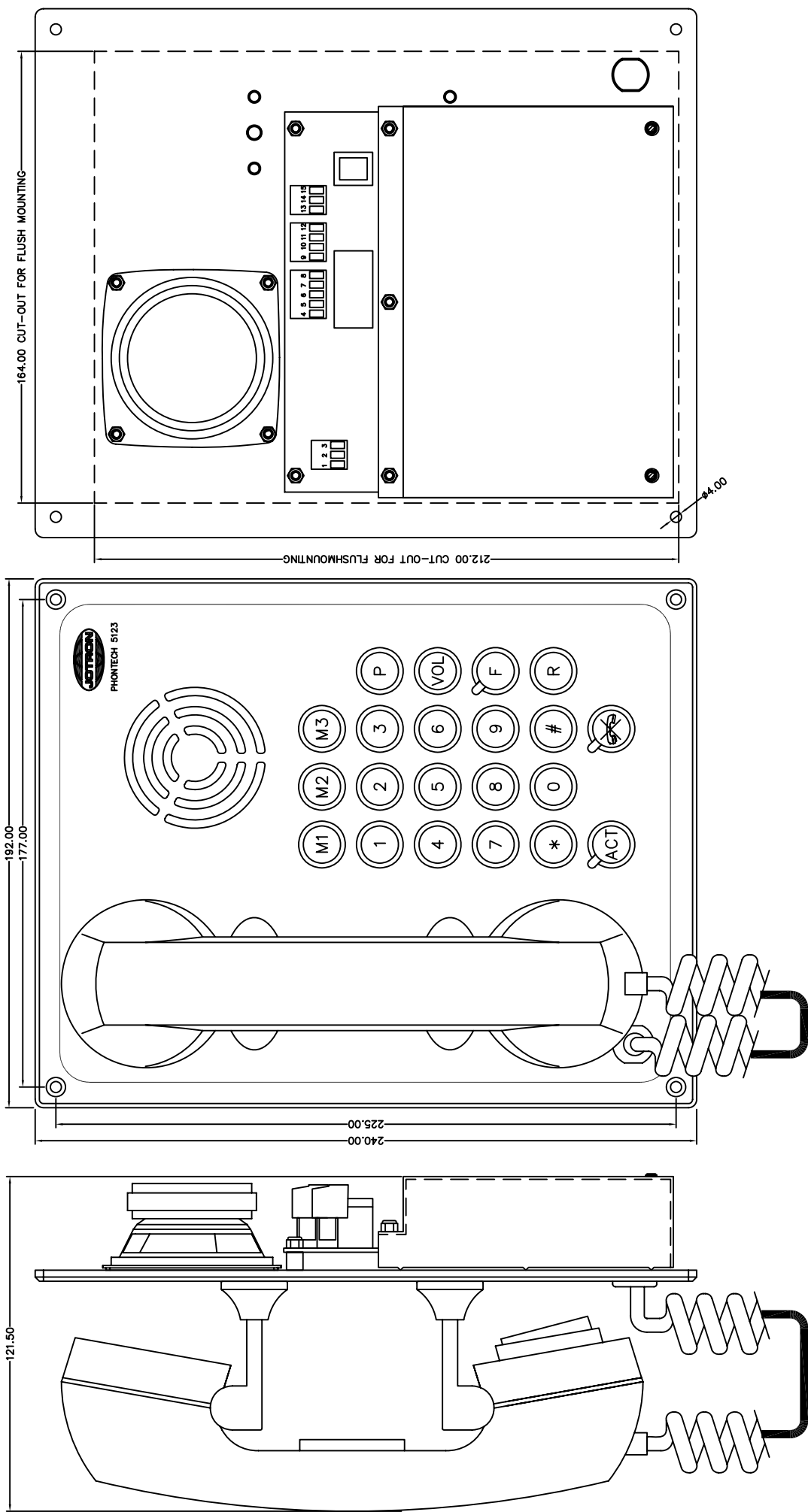


This document is the property of PHONTECH and shall not be loaned, copied, reproduced, or otherwise used in any manner without our written consent. It is the intent of product improvement, and the information contained herein is subject to change without notice.

REV No. 0 ISSUE DATE 03.12.2009 FINAL DOCUMENTATION CD PREPARED CHECKED APPROVED  
TITLE: 5123—BRIDGE CONSOLE TELEPHONE UNIT.  
ANALOG TELEPHONE.  
MECHANICAL LAYOUT.

SIZE A3  
DOC No. 09514—002—ML  
FILE NAME: 09514—002—ML.DWG

45/50



1

2

3

4

A

A

B

B

C

C

D

D

E

E

F

F

# 5123 BRIDGE CONSOLE TELEPHONE

CONNECTION TO  
PBX EXCHANGE

Ø 1 | LINE  
Ø 2 |  
Ø 3 | SCREEN / GND

EXTERNAL LOUDSPEAKER

SCREEN / GND 11  
SCREEN / GND 12

LOUDSPEAKER  
Typ. 20 Ohms  
Max. 15W

SIGNAL DEVICE POWER SUPPLY  
24VDC / 110VAC / 230VAC  
MAX 5A

INTERNAL  
CONNECTION:

EXTERNAL  
SIGNAL  
DEVICE

4 (+)

5

6 (+)

7

8 NOT IN USE

SIGNAL DEVICE

ALTERNATIVE CONNECTION:

INTERNAL  
CONNECTION:

EXTERNAL  
SIGNAL  
DEVICE

4

5 NOT IN USE

6

7 NOT IN USE

8

NO  
COM  
GENERAL  
SENSOR  
SYSTEM  
NC

24 VDC POWER SUPPLY  
FOR EXTERNAL  
LOUDSPEAKER AND  
BACKLIGHT

Ø 13 +24 V DC  
Ø 14 0 V  
Ø 15 SCREEN / GND

## NOTES:

### CABLE REQUIREMENTS:

TWISTED PAIR WITH OUTER SCREEN.  
RECOMMENDED CONDUCTOR AREA ALL  
CABLE TYPES: 0,75 sq.mm.

DO NOT COMBINE SIGNAL CABLES WITH  
OTHER CABLE TYPES SUCH AS MAIN  
SUPPLY.

THE CABLING FOR THIS SYSTEM SHOULD  
BE A SEPARATE NETWORK.

0	10.12.2009	FINAL DOCUMENTATION	HOT		
REV no:	ISSUE DATE	REASON FOR ISSUE	MA.BY	CH. BY	APP.BY
TITLE: PHONTECH 5123 BRIDGE CONSOLE TELEPHONE W. BACKLIGHT EXTERNAL CONNECTION.					
Ref. no:	No. of DWG:	1 of 1	TRACE BY:	HOT	SCALE: NONE



This document is the property of PHONTECH  
and must not be copied or shown to a third  
person without our written acceptance.  
In the interest of product improvement,  
PHONTECH reserves the right to alter  
specification and design without notice.

SIZE: A4 UED no:  
DOC. No: 09514-002-EC  
FILE: 09514-002-EC.DWG

1

2

3

4



# Weatherproof Telephone FernTel 3

## Analogue desk/wall telephone for indoor and outdoor use

- ▶ Shock-resistant housing (Polycarbonat)
- ▶ Protection degree IP 65 acc. to IEC60529
- ▶ Option Handset can be fixed (stabiliser bracket)
- ▶ Ambient temperature -25°C to +55°C
- ▶ Call tone  $\geq 95$  dB(A), 1 m
- ▶ Direct key at Displayversion
- ▶ Receiver volume can be boosted
- ▶ Telefonbook at Displayversion
- ▶ PIN code
- ▶ ZB-Version with call tone unit
- ▶ Assembly-friendly
- ▶ Menu 4 languages

### Use as workshop telephone

The FernTel 3 is the ideal telephone for many different work areas.

## Application

The FernTel 3 telephone of FHF is as stylish for indoor use as it is resistant for outdoor use in areas without explosive atmospheres. The new FernTel 3 is the ideal telephone for many different work areas – seawater, high air humidity, dust and not exactly gentle mechanical stress are no problem for it.

Its modern design is the perfect “packing” for the finest high-tech.

Its striking signal colours ensure the FernTel 3 cannot be missed whenever a telephone is urgently needed, e.g. in emergencies in poor weather and light conditions.

The FernTel 3 is suitable for almost universal use thanks to its amazing transformability.

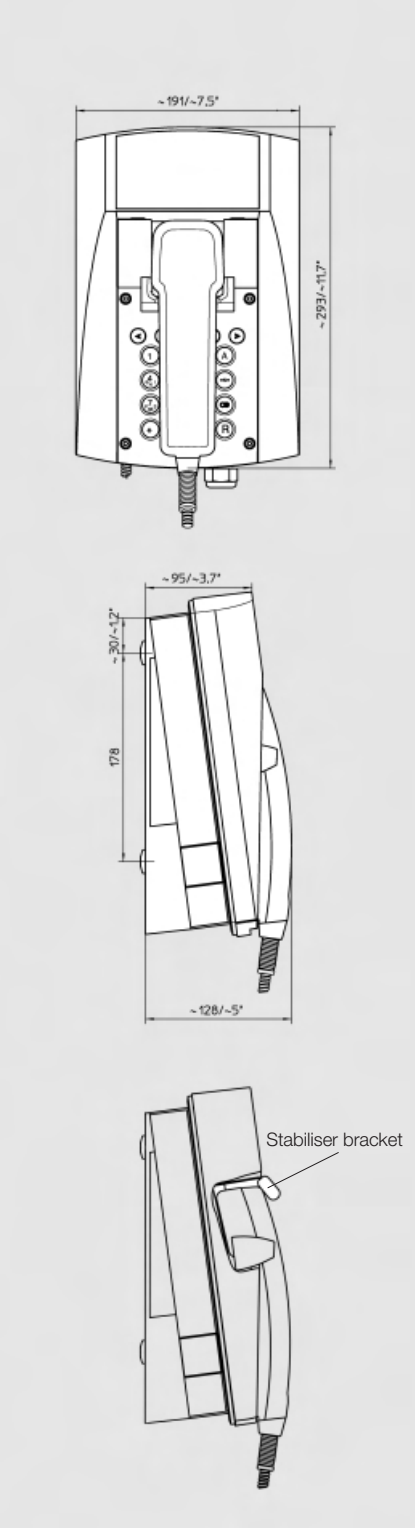
A deft hand movement and the desk telephone for indoor use is converted into a wall telephone for outside use. The FernTel 3 is offered in different variations. With 16 buttons without Display or with 21 buttons with Display. Both variations are offered with spiral cord or steel armoured cord. As addition, the FernTel 3 with Display has a direct key. Of course, there is the new FernTel 3 also as Hotline phone (ZB-Variant), with call tone unit.

In the casing-inside there is a keyboard for deposited that Hotline number. One becomes as accessories a stabiliser bracket for applications on movable machines, like for example on Ships.



Technical specification

<b>Connection data</b>		
Supply voltage	24...66 Vdc	
Supply current	19... 100 mA	
Ringing alternating current	30...90 Vac	
Ringing frequency	16.. 68 Hz	
Enquiry key (flash)	only for DTMF 80 ms, 120 ms, 600 ms	
Dialling procedure		
DTMF	Frequencies according to ITU-T Q.23 Tone duration unlimited or 90 ms	
PD	Pulse/Pause ratio 1.5:1 (60/40 ms) or 2:1 (66.7/33.3 ms)	
Ringing volume	Approx. 95 dB(A) at 1 m distance	
<b>Housing</b>		
Housing material	Polycarbonat	
Height x Width x Depth	293 x 191 x 128 mm	
Weight	Approx. 2.3 kg	
Display	2 lines, 16 positions per row, 7x 5 matrix Pictograms	
	Menu 4 languages	
Operating utilization position	Table or vertical wall mounting	
<b>Receiver</b>		
Mouthpiece	Electret-foil microphone	
Receiver inset	dynamic receiver inset with magnetic field generator	
Connections	Single- or multiwired up to 2.5 mm <sup>2</sup>	
Labelling		
Power cable	TCP/La, TCP/Lb	
Secondary sounder	W / W1	
Environmental conditions	Phone	LCD Unit
Ambient operating temp.	-25°C...+55°C	-10°C...+50°C
Degree of protection acc. to IEC60529	IP 65	
	Cable glands:	
	1x M20 cable gland	
	1x M20 blind plug	
	2x M12 blind plug	

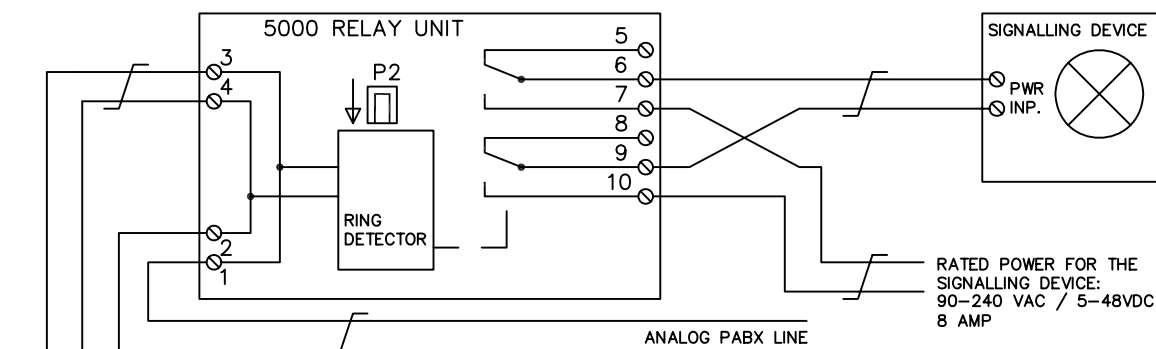


				* The full article number is made up by appending the colour code for the coloured housing to the article numbers given below.		
					yellow	1
					red	2
					grey	7
					black	0
Type	Name	Version		Art. no. *		
FernTel 3	Desk/Wall Telephone	without display	with spiral cord	112 300 2	...	
FernTel 3	Desk/Wall Telephone	with display	with spiral cord	112 310 2	...	
FernTel 3	Desk/Wall Telephone	without display	with flexible steel armoured cord	112 320 2	...	
FernTel 3	Desk/Wall Telephone	with display	with flexible steel armoured cord	112 330 2	...	
FernTel 3 ZB	Desk/Wall Telephone	without keypad	with flexible steel armoured cord	112 350 2	...	
Accessories	Stabiliser bracket			112 390 00		



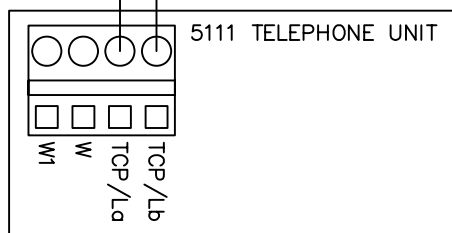
A

A



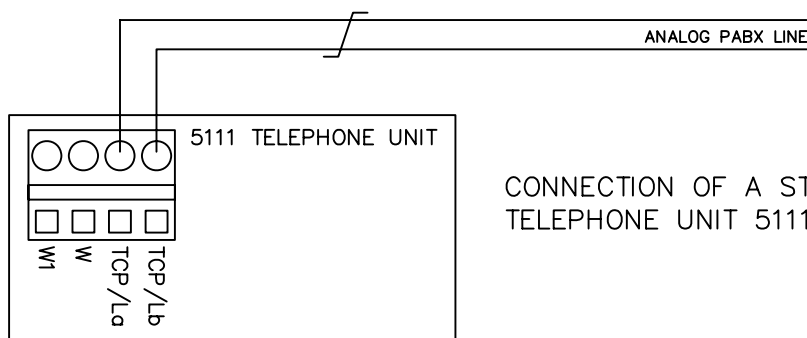
B

B

CONNECTION OF A TELEPHONE UNIT 5111  
TOGETHER WITH THE RELAY UNIT 5000

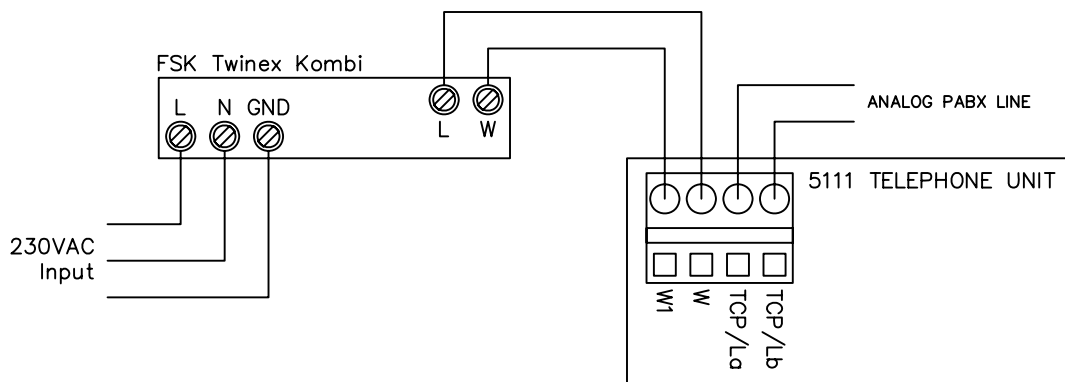
C

C

CONNECTION OF A STAND-ALONE  
TELEPHONE UNIT 5111

D

D



E

E

0	03.12.2007	FINAL DOCUMENTATION	ASk	P.A.	ASk
B	27.08.2007	DEVELOPMENT.	R.F.	P.A.	ASk
A	07.05.2007	DEVELOPMENT.	R.F.	P.A.	ASk
REV No.	ISSUE DATE	REASON FOR ISSUE	PREPARED	CHECKED	APPROVED



This document is the property of PHONTECH and must not be copied or shown to a third person without our written acceptance. In the interest of product improvement, PHONTECH reserves the right to alter specification and design without notice.

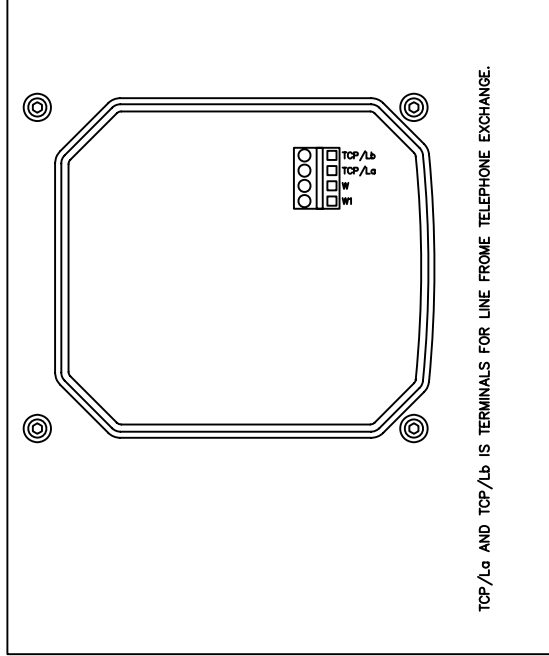
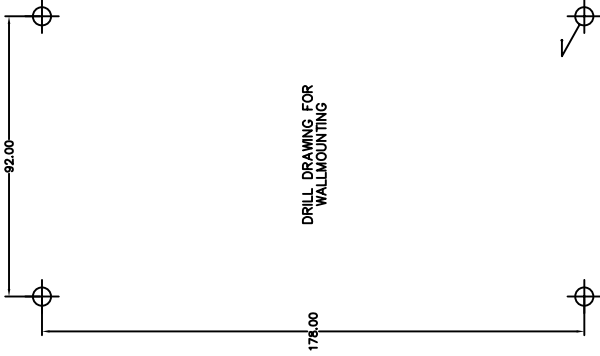
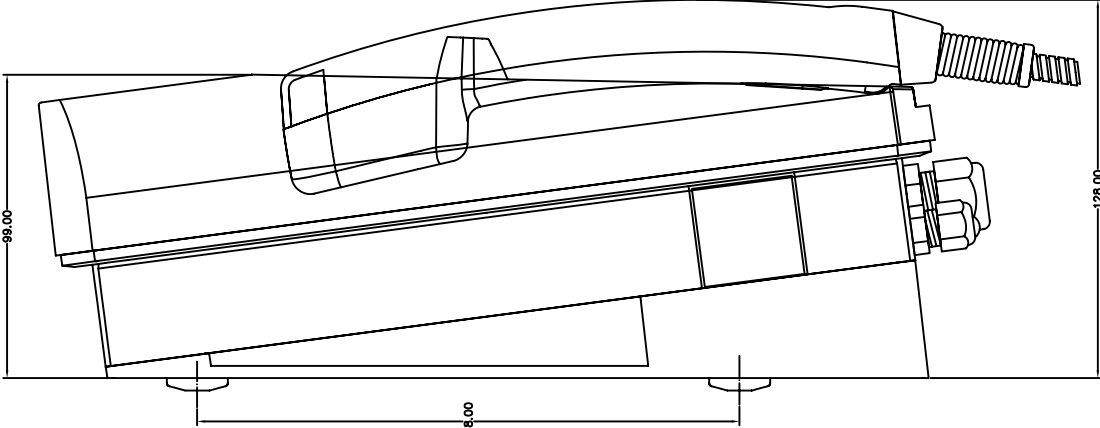
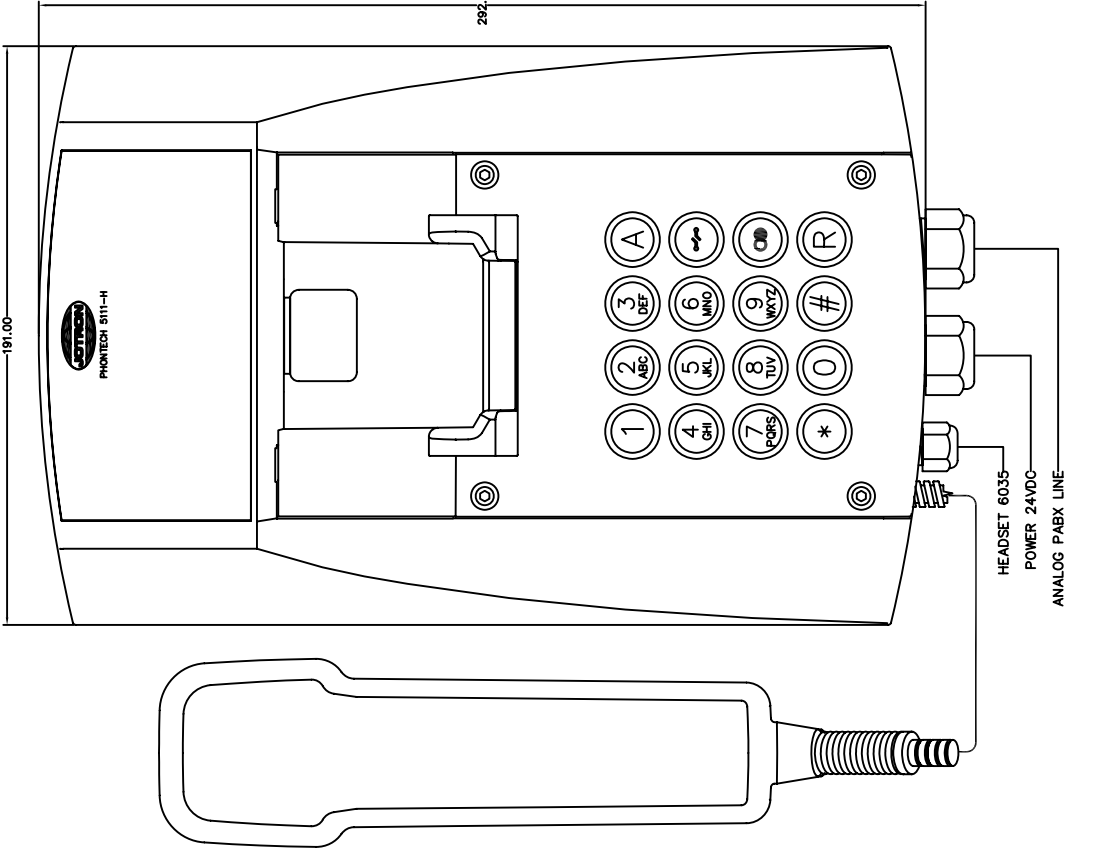
F

F

TITLE: 5111 – FERNTel3 INDUSTRIAL TELEPHONE  
EXTERNAL CONNECTION

SIZE: A4 UED No:  
DOC. No: 07500-004-EC  
FILE NAME: 07500-004-EC.DWG





PHONTECH

This document is the property of JOTRON PHONTECH and must not be copied or altered without the written permission of JOTRON PHONTECH. In the interest of product improvement, JOTRON PHONTECH reserves the right to make changes in specifications and design without notice.

SIZE: A2 PAGE: 51/55  
DOC. No: 07500-002-ML  
FILE NAME: 07500-002-ML.DWG

EQUIPMENT DATA		FIXING DETAILS		SEE DRAWING.	
MANUFACTURER	: FERNISG. PHF.	CABLE ENTRY	: BOTTOM.	CABLE ENTRY	: BOTTOM.
RACK/BOX TYPE	: 5111, M9620.	CLAMP TYPE	: M20/M12.	CLAMP TYPE	: M20/M12.
MATERIAL	: PLASTIC.	PROTECTION IP	: IP-56.	PROTECTION IP	: IP-56.
WEIGHT OF UNIT	: APP. 2.30Kg.	POWER CONSUMP.	: 18-100mA.	POWER CONSUMP.	: 18-100mA.
MOUNTING	: TABLE OR WALL.	HEAT DISSIPATION	: NA.	HEAT DISSIPATION	: NA.

REV. No.	1	2	3	4	5	6	7	8
DATE	01.10.2010	03.12.2007						
DESCRIPTION	DEV. COMPLETION	DEVELOPMENT						
REASON FOR ISSUE								
PREPARED	ASK	ASK	ASK	ASK	ASK	ASK	ASK	ASK
CHECKED	ASK	ASK	ASK	ASK	ASK	ASK	ASK	ASK
APPROVED	ASK	ASK	ASK	ASK	ASK	ASK	ASK	ASK

TITLE: 5111-H TELEPHONE FERNTEL3  
WITH HEADSET INTERFACE  
MECHANICAL LAYOUT

A

A

B

B

C

C

CONNECTION OF A TELEPHONE UNIT 5111-H  
TOGETHER WITH THE RELAY UNIT 5000

CONNECTION OF A STAND-ALONE  
TELEPHONE UNIT 5111-H

D

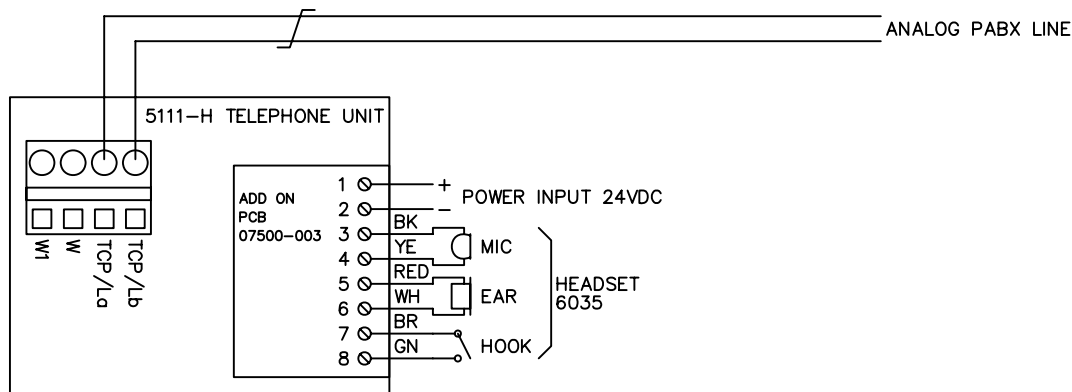
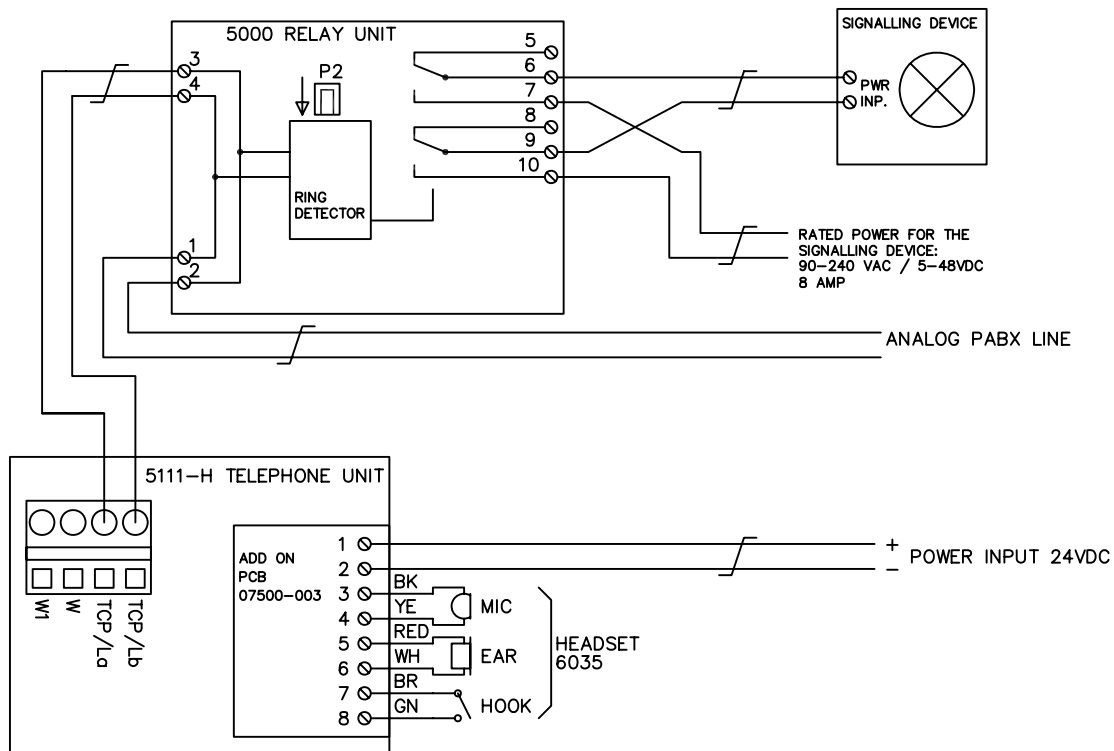
D

E

E

F

F



0	01.10.2010	DVM COMPLETION	ASK		ASK
A	03.12.2007	DEVELOPMENT.	ASK		ASK
REV No.	ISSUE DATE	REASON FOR ISSUE	PREPARED	CHECKED	APPROVED

TITLE: 5111-H, TELEPHONE FERNTel 3 w/HEADSET  
INTERFACE  
EXTERNAL CONNECTION.



This document is the property of JOTRON  
PHONTECH and must not be copied or shown  
to a third person without our written consent.  
In the interest of product improvement,  
JOTRON PHONTECH reserves the right to  
alter specification and design without notice.

SIZE: A4 UED No:

DOC. No: 07500-002-EC

FILE NAME: 07500-002-EC.dwg

1

2

3

4

A

A

B

B

C

C

D

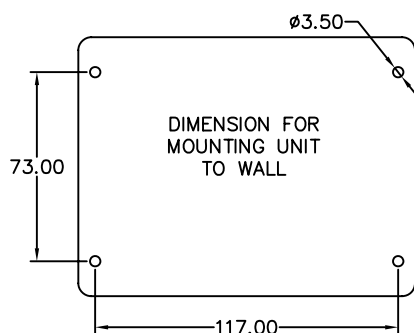
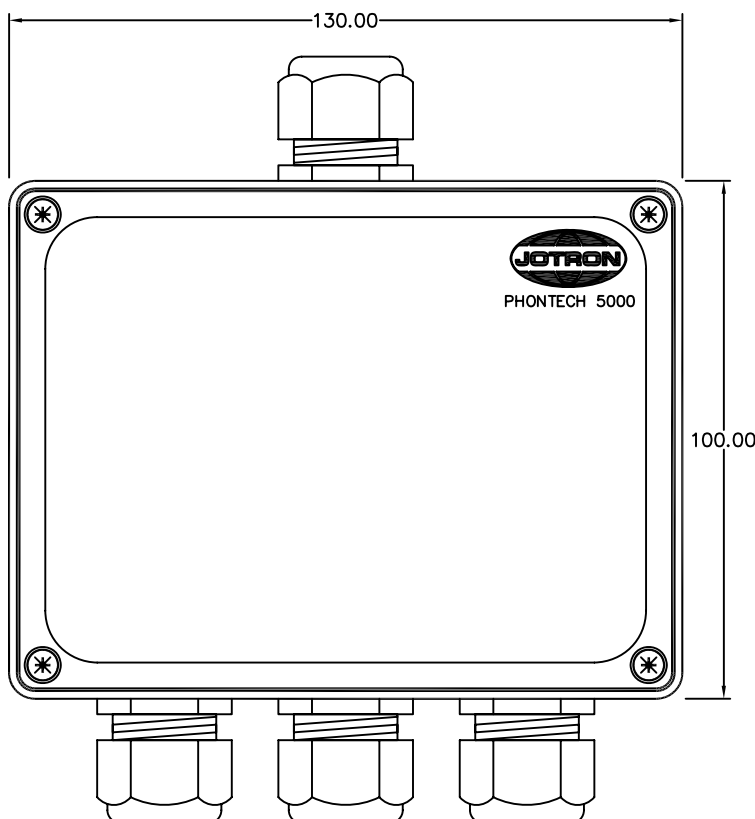
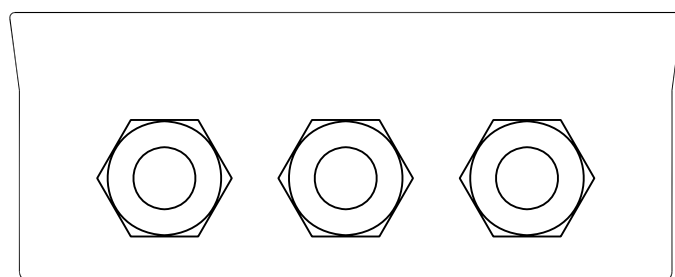
D

E

E

F

F

**EQUIPMENT DATA:**

MANUFACTURER : JOTRON PHONTECH AS  
MODEL/TYPE : RING RELAY UNIT  
RACK/BOX SUPPL. : JOTRON PHONTECH AS  
RACK/BOX TYPE : NA.  
MATERIAL : PC/ABS BLEND, ABS  
COLOUR : RAL 9005/9006  
WEIGHT OF UNIT : 0,3Kg.  
MOUNTING : TO WALL

FIXING DETAILS : SEE INSIDE BOX  
ACCESS : FRONT  
CABLE ENTRY : TOP/BOTTOM  
GLAND TYPE : 4pcs. M20  
PROTECTION IP : IP-56  
POWER SUPPLY : FROM CENTRAL  
POWER CONSUMP. : NA.  
HEAT DISSIPATION : NA.

REV No.	ISSUE DATE	REASON FOR ISSUE	PREPARED	CHECKED	APPROVED
0	2010.09.28	DVM COMPLETION	ASK		ASK
B	2010.05.07	DVM REVISION	ASK		ASK
A	2010.04.19	DEVELOPMENT	CD		CD

TITLE: 5000, ABS – RING RELAY UNIT

MECHANICAL LAYOUT.



This document is the property of JOTRON PHONTECH and must not be copied or shown to a third person without our written consent. In the interest of product improvement, JOTRON PHONTECH reserves the right to alter specification and design without notice.

SIZE: A3  
PAGE:  
DRAWING No: 09908-008-ML  
FILE NAME: 09908-008-ML.DWG

1

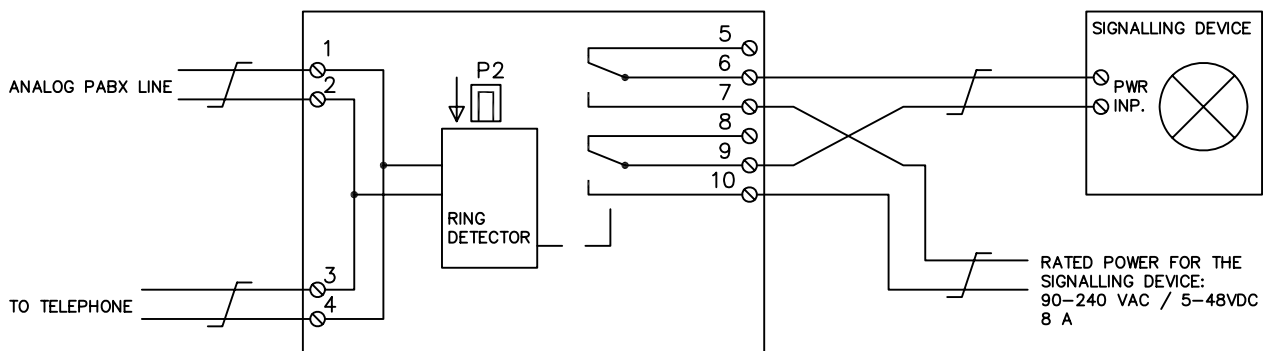
2

3

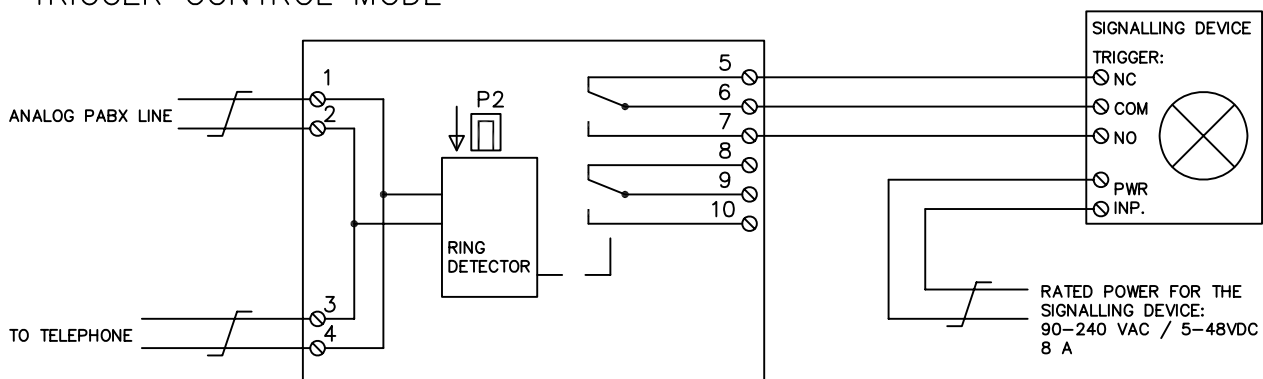
4

## CONNECTION ALTERNATIVES:

## POWER CONTROL MODE:



## TRIGGER CONTROL MODE



## INSTALLATION AND OPERATION PRECAUTIONS:

- \* THE RING RELAY UNIT MUST BE CONNECTED TO A LIVE TELEPHONE LINE FOR 1 MINUTE BEFORE FIRST OPERATION
- \* THE RING RELY CAN INITIALLY BE IN THE WRONG STATE AND MUST BE OPERATED ONCE BEFORE SECURE CORRECT OPERATION
- \* RELAY ACTION:  
P2 OFF = CONTINUOUS  
P2 ON = PULSED  
RELAY MAXIMUM LOAD = 8A

0	2010.09.28	DEVELOPMENT	ASK		ASK
A	2010.04.14	DEVELOPMENT	ASK		ASK
REV No.	ISSUE DATE	REASON FOR ISSUE	PREPARED	CHECKED	APPROVED



This document is the property of JOTRON PHONTECH and must not be copied or shown to a third person without our written consent. In the interest of product improvement, JOTRON PHONTECH reserves the right to alter specification and design without notice.

TITLE: 5000, ABS – RING RELAY UNIT  
External Connection

SIZE: A4 UED No: --  
DOC. No: 09908-008-EC  
FILE NAME: 09908-008-EC.dwg



# ExII-Telephone ExResistTel

**Explosion-proof, weatherproof  
Industrial telephone**

- ▶ Handsfree
- ▶ Temperature range  
-25 °C to +60 °C
- ▶ Certified for dust and gas atmospheres
- ▶ Display
- ▶ IP 66 EN 60529
- ▶ different housing colours



## Application

Communication devices for use in hazardous areas in the industry have to be especially well adapted to the extreme operating conditions they will be exposed to.

Our Ex-telephone has been developed for operation in the petro-chemical industry, on off-shore plants, in mills and harbours, which means it is resistant to large temperature differences, air humidity, sea water, dust and strong mechanical wear and tear. It is certified for use in hazardous dust and gas atmospheres.

The ExResistTel is completely programmable, and has been equipped with a 21-piece stainless (V4A) steel keypad designed for use with gloves. Letters and figures are presented clearly on the alphanumeric display.

The ExResistTel also boasts all the convenient features that have become standard in the field of office communication.

A string of optional extras and components – especially certified for hazardous areas – makes our telephone even more functional.

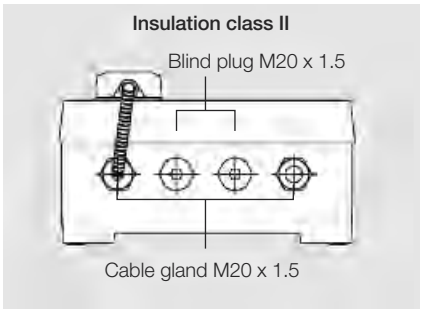
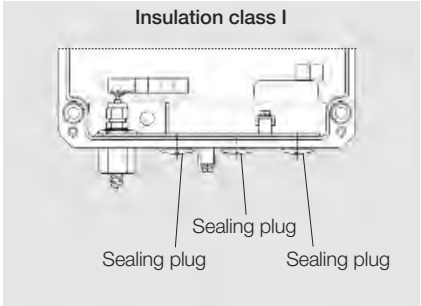
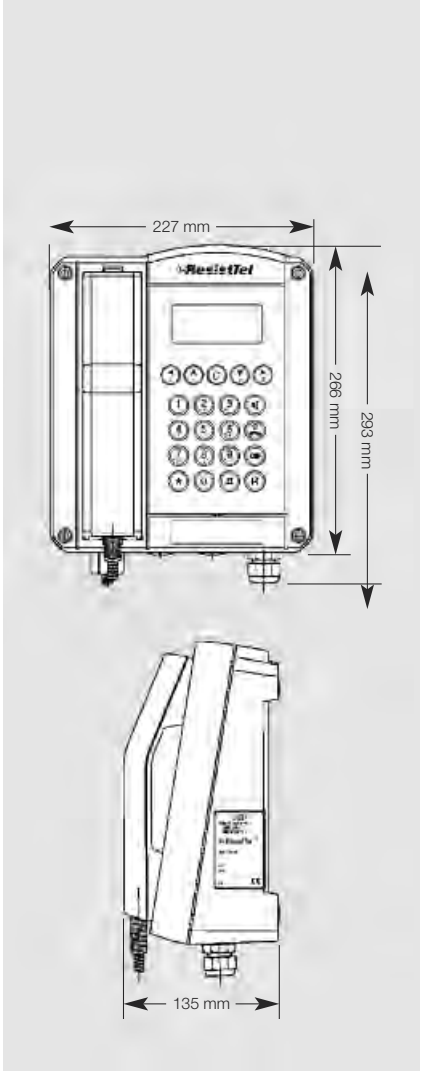
## Telephoning in the off-shore

The housing is made of impact-resistant and shockproof glass-fibre-reinforced polyester and is resistant to acids, sea water, alkalis, moisture and grease.



# Technical specifications

<b>Connections</b>		
Types of protection	II 2G Ex e mb [ib] IIC T5 Gb II 2D Ex tb [ib] IIIC T100 °C Db -25 °C ≤ T <sub>a</sub> ≤ 60 °C	II 2G Ex e mb [ib] IIC T6 Gb II 2D Ex tb [ib] IIIC T80 °C Db -25 °C ≤ T <sub>a</sub> ≤ 40 °C
Approval	DMT 02 ATEX E 183	
Line voltage	24 V <sub>DC</sub> to 66 V <sub>DC</sub>	
Line current	15 mA <sub>DC</sub> to 100 mA <sub>DC</sub>	
Ringing alternating current	24 V <sub>AC</sub> to 90 V <sub>AC</sub> (at 21...54 Hz ringing frequency) 30 V <sub>AC</sub> to 90 V <sub>AC</sub> (at 16,6...54 Hz ringing frequency)	
Ringing impedance	greater than 6,0 KΩ at 25 Hz and 24...90 V <sub>AC</sub> greater than 4,0 KΩ at 50 Hz and 24...90 V <sub>AC</sub>	
Inquiry key	Flash function adjustable from 40 ms to 399 ms	
Dialling procedure	PD-DTMF operation to be set in the menu.  PD operation where the pulse/pause ratio can be set to 1.5:1 or 2:1 in the menu.	
W-conductor	Connection for external secondary sounder	
Screw terminals	up to 4 mm² rigid. Up to 2.5 mm² flexible	
<b>Housing</b>		
Material	Glass-fibre-reinforced polyester	
Height x Width x Depth	approx. 266 mm x 227 mm x 135 mm	
Weight	approx. 5.5 kg	
Display	2-line alphanumerical display with pictograms, Visible area approx. 78 mm x 26 mm	
Keypad	Metal keypad with ice protection, 21 keys with ABC lettering for name entries	
<b>Receiver</b>		
Stabilizer bracket	Integrated, adjustable stabilizer bracket	
Handset cord	Stainless steel (V4A) armoured handset cord	
Receiver inset	Dynamic receiver inset with leakage field spool for inductive coupling of hearing aids	
Mouthpiece	Electret-foil microphone	
Noise suppression	greater than 3dB due to integrated mouthpiece horn mouth	
<b>Environmental conditions</b>		
Degree of protection	IP 66 according to EN60529	
Impact protection	IK 09 according to EN50102	
Operation temperature	-25 °C to +60 °C for temperature class T5 -25 °C to +40 °C for temperature class T6	
Storage temperature:	-25 °C to +70 °C	
<b>Further characteristics</b>		
Optical call signalling	Display shows ( ( 🔔 ) )	
Ringing sound pressure level	approx. 90 dB(A) at 1m distance	
Ringing melodies	10 melodies selectable	
Listening by loudspeaker	Maximum sound pressure level approx. 68 dB (A) at 1m distance	
Handsfree operation	Maximum sound pressure level approx. 68 dB (A) at 1m distance	
Amplified listening in receiver	Receiver volume can be boosted, in 7 steps from 0–12 dB(A)	
Menus	in several language	
Telephone directory	max. 50 entries (names and numbers)	



## Accessories



ExII-Additional headset



ExII-Additional earpiece



ExII-Loudspeaker set



ExII-TWIN



Protection hood



ExII-Secondary sounder

## Order information

\* The full article number is made up by appending the colour code for the coloured cap to the article number given below.

transp. 11  
red 12  
amber 13  
green 14  
blue 15

Type	Name	Version	Article no.
ExResistTel	ExII-Telephone	black	112 861 01
ExResistTel	ExII-Telephone	red	112 861 0102
ExResistTel	ExII-Telephone ZB	black – without keypad and display	112 861 02
ExResistTel	ExII-Telephone ZB	red – without keypad and display	112 861 0202
ExResistTel	ExII-Telephone	black – Protection class I	112 862 01
Accessories	ExII-Additional earpiece		112 861 03
Accessories	ExII-Additional headset		112 861 04
Accessories	ExII-Loudspeaker set		112 861 05
Accessories	ExII-Secondary sounder		211 842 06
Accessories	Protection hood	hot galvanized, yellow	118 901 01
Accessories	Protection hood	stainless steel	118 901 11
Accessories	ExII-TWIN		118 833 ..*

Subject to change without notice · Printout 07/14





# POSSIO

## SVEA II

### GSM Connector

► **Connect your Analogue Telephone Equipment**

.....

► **Fixed Landline Replacement**

.....

► **Handles Fax**

.....

► **Easy to Install and Manage**

.....

► **Optimized for Every Country**

.....

► **High Quality Voice with Cinterion Module**



#### **About SVEA II**

SVEA II GSM Connector is a Fixed Cellular Terminal (FCT) that converts standard analogue voice, fax & data services into GSM services.

SVEA II fulfils all requirements for fixed line such as: national, international and mobile calls, sending and receiving fax, data transmission and dial-up connection to Internet.

SVEA II makes all well-known fixed-line services available over GSM and at the same time in an intelligent way eliminates differences between GSM and PSTN networks.

SVEA II is an easy to use product, with built-in internal GSM antenna (with possibility to connect external antenna), built-in battery backup and external power supply. It can easily be wall mounted and requires only SIM card installation.

SVEA II, among other services, includes an echo cancelling system for adaptation to different line impedance, a fixed dial system for minimising the waiting time when dialing out and support for GSM 850/900/1800/1900 technology. CDMA version is also available.

SVEA II has a remote management system, dedicated for Network Operators, to keep control of installed units in the field and receive alarms from them. SVEA II is also equipped with a tamper alarm to prevent unauthorized usage of the unit.

LED indicator for battery backup, line status and signal level.

SVEA II is used by major operators and is perfect for mobile offices, temporary buildings and remote areas.



## SVEA II as fixed line

- Two independent lines:
  - a. RJ11 analogue port for ordinary phones
  - b. RJ11 analogue port for fax and data (optional)
- GPRS/EDGE and CSD support
- National alignments: tones, cadence, etc
- Data transmission services V.90 and V.92-optional (ISP/server mode), V.34
- FSK/CLIP presentation
- Intelligent Quick Dial System, that route the dialed number immediately through the GSM net at the last dialed digit

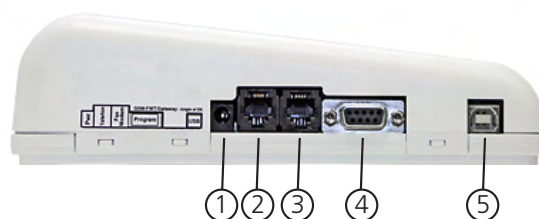
## Additional Features

- Easily programmable locally via PC and/or DTMF
- Protection system – 3 level security access system
- Remote Possio management system for configuration and service of all units in the field
- Fraud protection and detection system
- Built-in GSM antenna, TNC plug for external antenna attachment
- PIN code management
- Service & Network operator SIM card lock system
- Built-in battery backup
- LED indicator for battery backup, line status and signal level
- Build in Echo cancellation system for adaptation to different line impedance
- Polarity reversal line when B-answer



## Connectors

1. Power plug – for power supply, converts 220V/230V voltage to 18V voltage
2. Telephone plug - RJ11 for analog telephone with DTMF or Pulse
3. Fax/modem plug - RJ11 for analog fax machine G3 or analog modem V90
4. RS232 port - for programming SVEA II GSM Connector. Only for authorized person.
5. USB port - Data port GPRS/EDGE. Contact Possio for more information.



## Tech Spec

### General

Quad Band GSM850/950/1800/1900 Mhz  
GPRS, EDGE and CSD support  
Fax Group 3, Class 1

### GSM performance

Voice and emergency calls (TCH / FS)  
Half Rate (HR), Full Rate (FR),  
Enhanced Full Rate (EFR) and  
Adaptive Multi Rate (AMR)

### Output power

Class 4 (2W) for EGSM850/900

Class 1 (1W) for GSM1800/1900  
Class E2 (0,5W) for EDGE850/900  
Class E2 (0,4W) for EDGE1800/1900

### Data connectivity

EDGE class 12, max 236,8 kbps  
GPRS Class 12, max 86 kbps  
Input AC: 110-240V AC, 50/60 Hz  
Output DC: 18V DC, 0,8AUSSD

### Mechanical features

2 independent RJ11 connectors  
Internal GSM antenna, 50 Ohm  
External antenna connector TNC (f)  
Input AC: 110-240V AC, 50/60 Hz

Output DC: 18V DC, 0,8A

### Physical description

[H] 210 mm x [W] 200 mm x [D] 55 mm  
1540g (incl. ext. power supply)

### Operating temperature

from -10°C to +55°C

**SVEA is RoHS compliant**

### POSTAL ADDRESS

P.O. BOX 1236  
SE-164 28 Kista  
SWEDEN

### VISITING ADDRESS

Isafjordsgatan 35,8th fl.  
Kista (Stockholm)  
SWEDEN

### WEB

[www.possio.com](http://www.possio.com)

### E-MAIL

[sales@possio.com](mailto:sales@possio.com)

### TELEPHONE

+46 (0)8 587 44 020

### TELEFAX

+46 (0)8 587 44 010







[www.jotron.com](http://www.jotron.com)