

QUICK SETUP GUIDE

Bucketless Dehumidifier BDH-450, BDH-550



Box Contents:



User manual



Dehumidifier



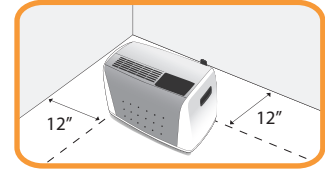
Auto-pump drainage hose



Hose clamp

SETUP

- Dehumidifier should have at least 12 inches of space on all sides for good circulation.
- Keep all doors and windows closed in the area the dehumidifier is located.
- Keep the unit away from sources of dirt, dust, or any woodworking equipment.

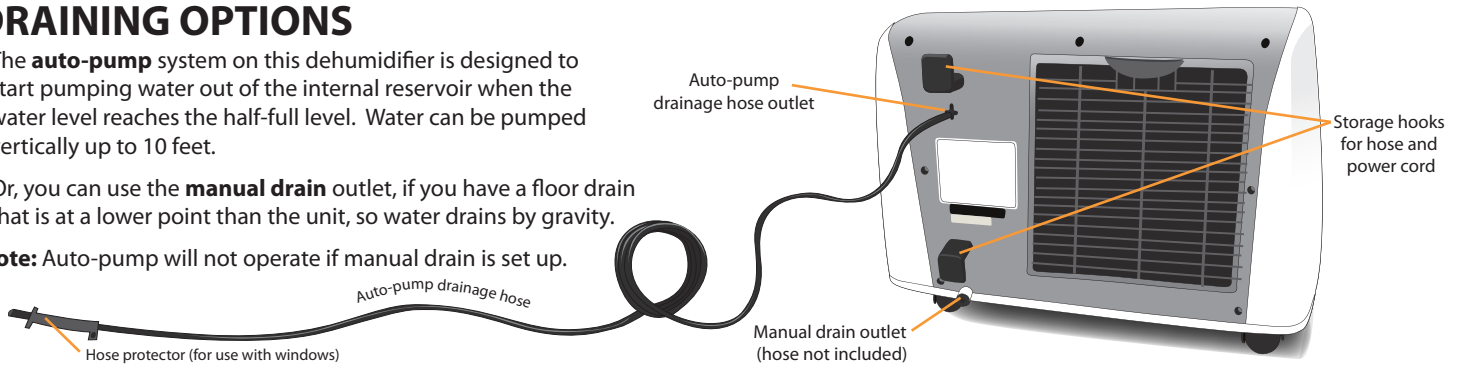


DRAINING OPTIONS

• The **auto-pump** system on this dehumidifier is designed to start pumping water out of the internal reservoir when the water level reaches the half-full level. Water can be pumped vertically up to 10 feet.

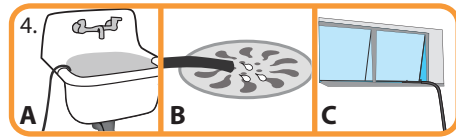
• Or, you can use the **manual drain** outlet, if you have a floor drain that is at a lower point than the unit, so water drains by gravity.

Note: Auto-pump will not operate if manual drain is set up.



Auto-Pump

1. First, place the included hose clamp over the drainage hose.
2. Push the drainage hose over the auto-pump drainage hose outlet until it is secure.
3. Push the hose clamp over the outlet to secure the hose.
4. Put the draining end of the hose over any suitable area where water can be emptied: a sink (A), drain (B), or window (C).



- Be sure water flows away from buildings or other objects that could be damaged.
- The draining hose must not be put more than 10 feet above the floor on which the unit is standing.

OPERATION



1. Press power button to start.



2. Using - and + buttons, select desired humidity level.
 - This dehumidifier allows 30-80 percent humidity level.



3. Press the fan button to adjust fan speed.

Manual Draining

1. Take out the rubber stopper on the manual drain outlet.
2. Position the manual drain outlet directly above floor drain if possible. If not, use 1/2 inch diameter hose to drain into a place lower than the unit.

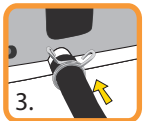
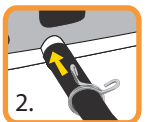
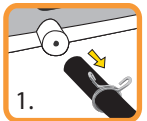


Installing a 1/2 inch diameter hose:

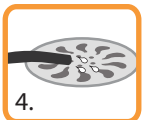


- If there is a steel or plastic tip on your 1/2 inch diameter hose, it should be removed.

1. First, put an 11/16 inch diameter hose clamp over the hose.
2. Then push the hose over the manual drain outlet.
3. Then push the clamp over the outlet to secure the hose.
4. Put the draining end of the hose over a drain or suitable place for water to empty.



- **Manual drain hose and 11/16 inch diameter hose clamp not included.** A 1/2 inch diameter hose and 11/16 inch diameter hose clamp should be used if necessary.



Indicator Lights

• **Water light** will turn on if water is restricted from exiting the unit.

• **Defrost light** will turn on if room temperature is below 40° F.

See user manual for troubleshooting.