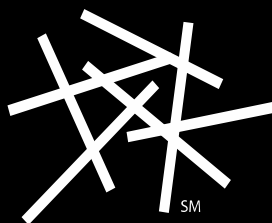


hayneedle



ITEM NAME: Coronado Black Granite Propane Fire Pit

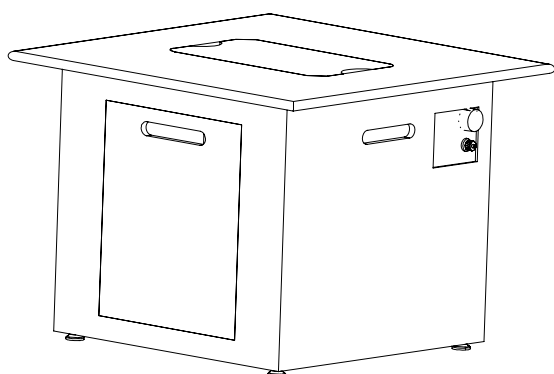
SKU: ALZ865-1



User's Manual



READ BEFORE USE!



WARNING

USE LIQUEFIED PETROLEUM GAS ONLY!

-Do not store or use gasoline or other flammable vapors and liquids in the vicinity of this or any other appliance.

- WHAT TO DO IF YOU SMELL GAS:

- Do not try to light any appliance.
- Do not touch any electrical switch; do not use any phone in your building.
- Immediately call your gas supplier from a neighbor's phone. Follow the gas supplier's instructions.
- If you cannot reach your gas supplier, call the fire department.

Installation and service must be performed by a qualified installer, service agency or the gas supplier.

WARNING:

If the information in this manual is not followed exactly, a fire or explosion may result causing property damage, personal injury or loss of life.

Qingdao Hichanse Group Co., Ltd

Eastern Wenhua Road, Jimo Economic Developing Zone, Shandong Province, China



WARNING

For Outdoor Use Only!

Use Liquefied Petroleum Gas (LP-Gas) Only !

Propane cylinders sold separately

DANGER

If you smell gas:

1. Shut off gas to the appliance.
2. Extinguish any open flame.
3. If odor continues, keep away from the appliance and immediately call your gas supplier or fire department

WARNING

Improper installation, adjustment, alteration, service or maintenance can cause injury or property damage. Read the installation, operating and maintenance instructions thoroughly before installing or servicing this equipment.

An LP-cylinder not connected for use shall not be stored in the vicinity of this or any other appliance.



WARNING

Turn off gas supply when the fire pit is not in use.



WARNING

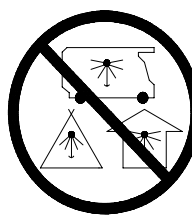
Battery may contain mercury. Do not deposit in fire or put in trash. Recycle manage as hazardous waste.

If the fire pit is stored indoors, leave LP-Gas cylinder outdoors.



DANGER

CARBON MONOXIDE HAZARD



This appliance can produce carbon monoxide which has no odor

Using it in an enclosed space can kill you.

Never use this appliance in an enclosed space such as a camper, tent, car or home.



DANGER

Failure to follow the Dangers, Warnings and Cautions contained in this Owner's Manual may result in serious bodily injury or death, or in a fire or an explosion causing damage to property.

GENERAL INFORMATION

This fire pit complies with "ANSI Z21.97-2010, American National Standard For Outdoor Decorative Gas Appliances and CSA CR97-003, Outdoor Gas Fireplaces." Please read this manual thoroughly to familiarize yourself with the operation and precautions before you use this appliance. If the information in this manual is not followed exactly, a fire or explosion may result causing property damage, personal injury or loss of life.

SPECIFICATIONS

Product Name	Outdoor Gas Fireplace
Model No.	HDQ-09-02-02
Rated Heat Output	27000 btu/hr
Type of Gas	Propane
Gas Supply	20 lb LP-Gas Cylinder
Gas Supply Pressure	Max. 250 PSI
Orifice Size (dia.)	1.61mm
Mainfold Pressure	11 inch W.C

IMPORTANT SAFETY INFORMATION AND PRECAUTIONS

- *Do not use this fire pit for cooking.
- *Do not burn any other materials other than are supplied with and intended for use in this fireplace.
- *Do not pour water into fireplace.
- *The installation of this product must conform with local codes or in the absence of local codes, with the National Fuel Gas Code, ANSI Z223.1.
- *The pressure regulator and hose assembly provided with the fire pit must be used. The replacement must be those specified by manufacturer.
- *Do not use this fireplace if any part has been under water. Immediately call a qualified service technician to inspect the appliance and to replace any part of the control system and any gas control which has been under water.
- *Do not store a spare or disconnected liquefied petroleum gas cylinder under or near this fireplace.
- *After a period of storage, and/or non use, the propane fireplace should be checked for gas leaks and burner obstructions before use.
- *Do not operate the propane fireplace if there is a gas leak present.
- *Never use a flame to check for gas leaks.
- *Combustible materials should never be within 48 feet of the top, back or sides of your propane fireplace.
- *Do not put any other fireplace cover or anything flammable on, or beneath the fireplace.
- *The propane fireplace should never be used by children. Children must be supervised when they are anywhere near the appliance.
- *Users should be alerted to the hazards of high surface temperatures and keep a safe distance to avoid burning or clothing ignition.
- *Pay attention when operating the fire pit. It is hot in use and should never be left unattended. Do not transit it while in operation.
- *Should fire go out while burning, turn the gas valve off. Follow the instruction and wait five minutes before attempting to relight.
- *Never use charcoal or any other solid fuel in the fire pit. Never parch clothing or other flammable materials on or near the fire pit.
- *Never lean over the open fireplace or place hands or fingers on the upper portion of an operational unit.
- *Keep ventilation openings in cylinder enclosure(FIREPLACE BODY) free and clear of debris.
- *Do not rest feet on the fireplace.
- *Please take out the battery when not using the fireplace for an extended length of time.
- *Do not enlarge valve orifices or burner ports when cleaning the valve or burner.
- *Cylinder supply system must be arranged for vapor withdrawal
- *LP Tank used must include a collar to protect the cylinder valve
- *Never fill the cylinder beyond 80% full
- *Liquefied petroleum gas is not natural gas. Only use propane for this fire pit.
- *The conversion or attempted use of natural gas in a liquefied petroleum gas unit or liquefied petroleum gas in a natural gas unit is dangerous.
- *This appliance shall be used only outdoors in a well-ventilated space and shall not be used in a building, garage or any other enclosed area. Do not use this fire pit on vehicles or boats. Always operate the appliance on flat ground outdoors.
- *Keep the fuel supply hose away from any heated surfaces.
- *Any guard or other protective device removed for servicing the appliance must be replaced prior to operating the appliance.

*Do not use this fireplace unless all parts are in place.

FOR LIQUEFIED PETROLEUM GAS UNITS

*Use only 20 lb / 9.1 kg LP-Gas cylinders.

*Do not burn wood or any other materials in this fire pit.

*Cylinder must be stored outdoors in a well-ventilated area out of the reach of children.

Disconnected cylinder must have threaded valve plugs tightly installed and must not be stored in a building garage or any other enclosed area.

*Do not attempt to disconnect the gas regulator or any gas fitting while your fireplace is in operation.

*A dented or rusty liquefied petroleum cylinder may be hazardous and should be checked by you

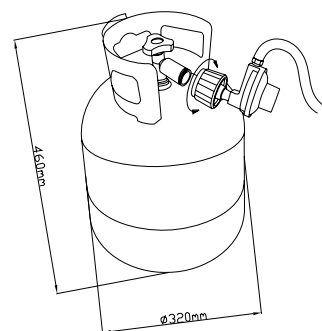
*Do not use a liquefied petroleum cylinder with a damaged valve and any other worn out parts.

*LP-gas supply cylinder to be used must be constructed and marked in accordance with the specifications for LP-gas cylinders of the U.S. Department of Transportation (DOT).

*Transit and store the empty gas cylinders carefully and properly.

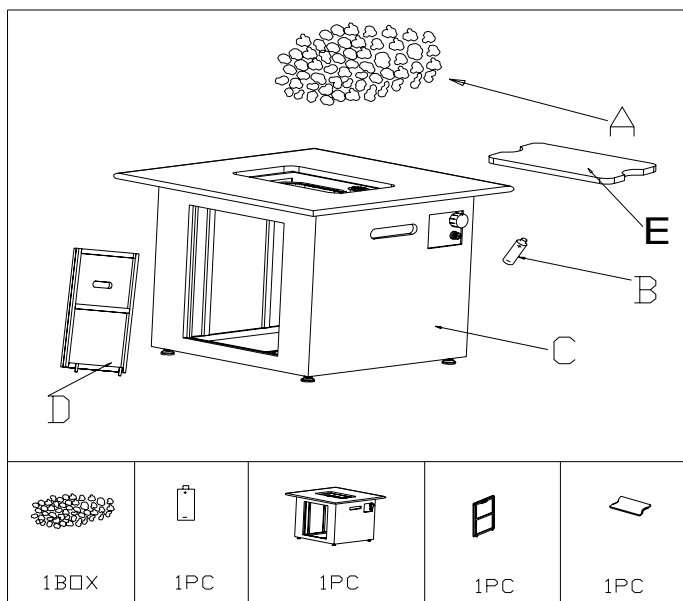
*If you see, smell or hear the hiss of escaping gas from the liquefied petroleum cylinder:

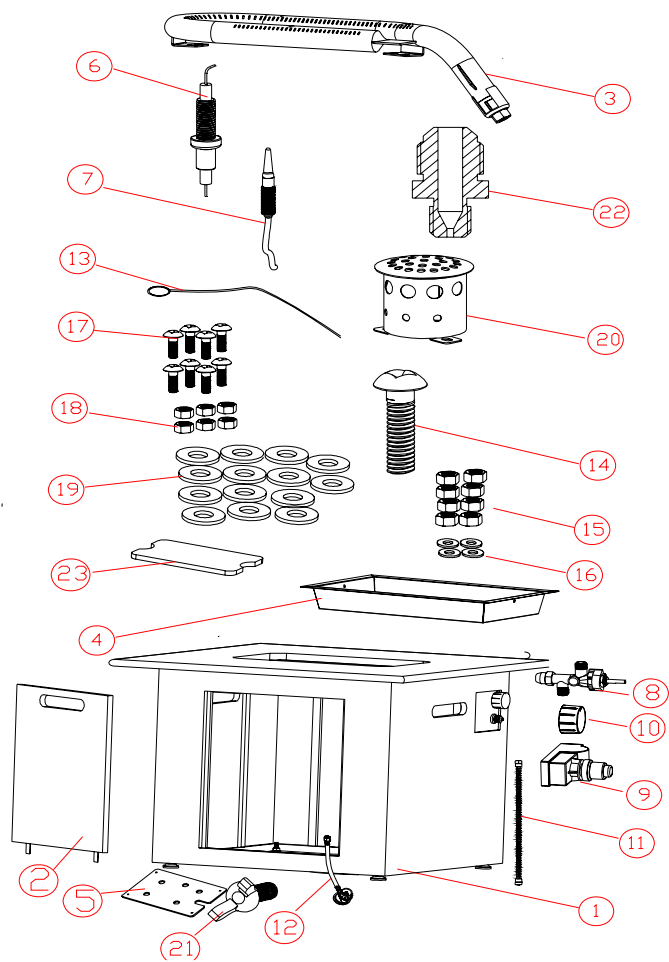
1. Turn off the gas supply and get away from the gas cylinder and the fire pit at once.
2. Do not attempt to correct the problem yourself.
3. Get to your gas supplier and/or the fire department for help.



Expanded view

ITEM	DESCRIPTION	QTY
A	Fire Glass	1 BOX
B	Battery (AAA)	1PC
C	Body	1PC
D	Door	1PC
E	Marble Cover	1PC





Parts/hardware List

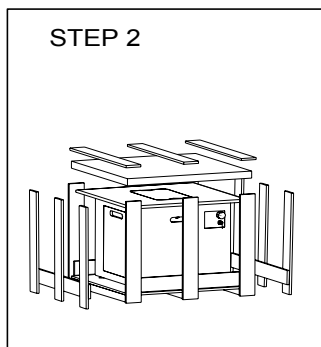
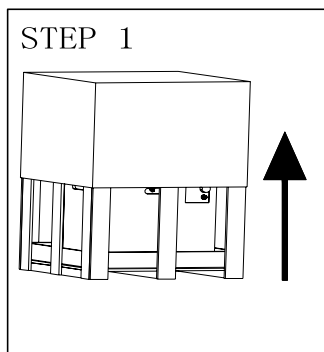
No.	Part Description	QTY	Part No.
1	Body	1	HDQ-09-02-02-01
2	Door	1	HDQ-09-02-02-02
3	Burner	1	HDQ-09-02-02-03
4	Fire Bowl	1	HDQ-09-02-02-04
5	Heat Insulation Board	1	HDQ-09-02-02-05
6	Ignition Pin	1	HDQ-09-02-02-06
7	Thermocouple	1	HDQ-09-02-02-07
8	Control Valve	1	HDQ-09-02-02-08
9	Pulse Ignition	1	HDQ-09-02-02-09
10	Knob	1	HDQ-09-02-02-10
11	Bellows	1	HDQ-09-02-02-11
12	Regulator	1	HDQ-09-02-02-12
13	Grounding Wire	1	HDQ-09-02-02-13
14	M5*40 Screw	4	HDQ-09-02-02-14
15	M5 nut	4	HDQ-09-02-02-15
16	M5 washer	4	HDQ-09-02-02-16
17	M4 Hex bolt	6	HDQ-09-02-02-17
18	M4 Nut	6	HDQ-09-02-02-18
19	M4 washer	12	HDQ-09-02-02-19
20	Shade	1	HDQ-09-02-02-20
21	M8*40 Screw	1	HDQ-09-02-02-21
22	Nozzle	1	HDQ-09-02-02-22
23	Marble cover	1	HDQ-09-02-02-23

UNPACKING AND LEAK TEST INSTRUCTIONS

*** Please keep these assembly instructions for future reference.**

STEP 1.

- (1) Cut the ties on the carton, with the carton positioned in an upright position.
- (2) After removing the carton, remove the wooden frame and foam carefully.



STEP 2.

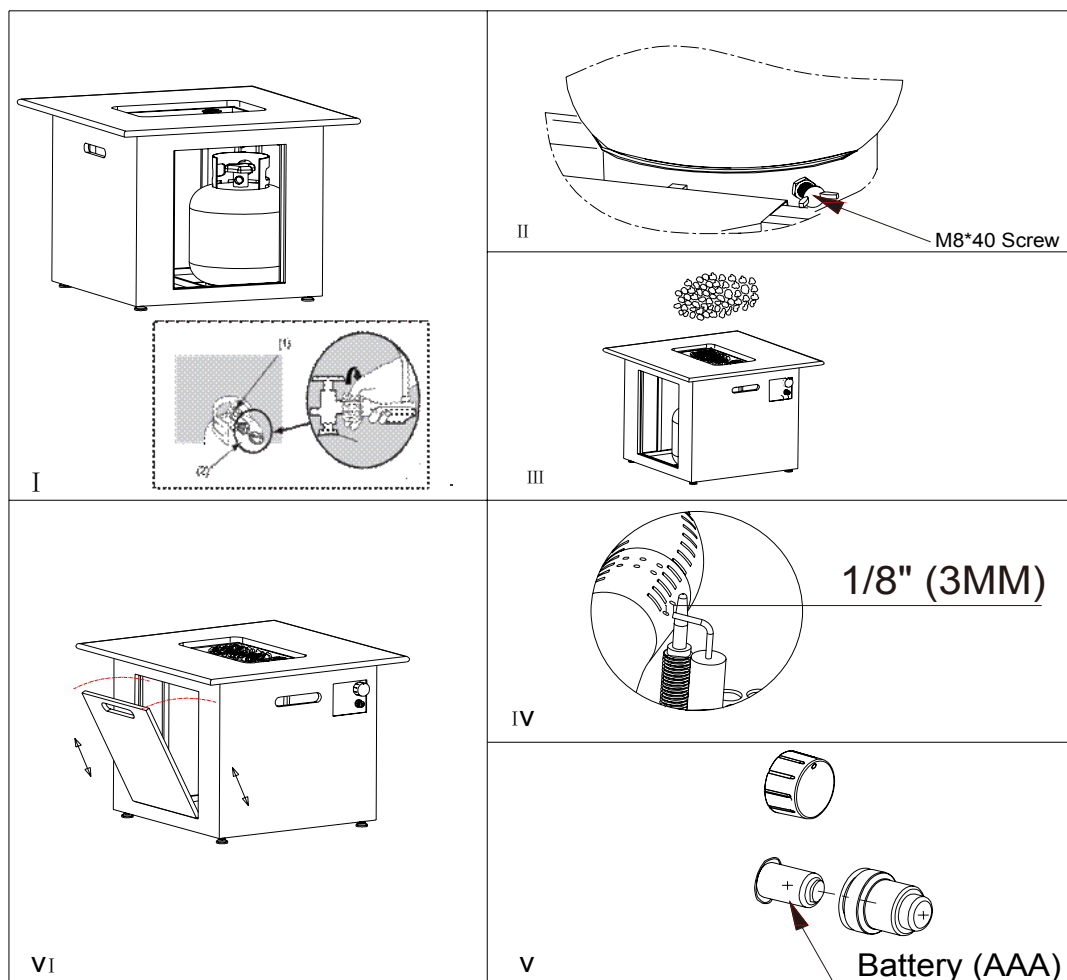
- (1) Place the fire pit on a flat ground.
- (2) The marble is installed on the top of the firepit.
- (3) Cut off the tie fastened the regulator at the metal stand and set it free for installation to LP-Gas Tank.

STEP 3.

1. Check each part before using the product. Make sure the gas supply system is turned "OFF" before assembling.
2. Open the door of firepit, put the gas tank on the metal stand. Make sure the gas tank sits on the metal stand completely. Turn the T-handle clockwise to close the gas supply on the gas tank. Secure the gas hose regulator onto the gas tank valve by turning the regulator clockwise until tight. (See figure I). Make sure the gas tank is in the upright position. Keep gas tank in upright position at ALL times.
3. Turn the wing screw on the outer part of metal stand clockwise to secure the gas tank tightly. (See Figure II.)
4. Place the fireglass averagely in the fire bowl on the top of the fire pit. Otherwise the firepit can not be operated properly. (See Figure III)
5. Check if ignitor electrode points to the hole of the burner correctly. Ensure the gap (spark gap) between burner and ignitor electrode is 1/8"(3mm) as per figure IV.
6. Take the one AAA battery out of the packaging and insert it into the ignitor module, as shown in the figure V, then put the knob/cover back on.

When the battery is completely depleted, please replace with (7#) AAA battery.

If the product is not being used over a long period of time, please remove the battery and keep out of the reach of children



**** DO NOT COVER THE IGNITION SCREEN when placing the fireglass into the fire bowl. Always keep Ignition Screen visible.**

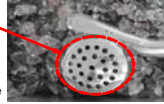


WARNING

This screen must be clear and free of obstructions at all times to insure proper operation.

Screen

Do not place the fire glass on the screen, keeping the screen visible



STEP 4. LEAK TEST

WARNING

- Do not use an open flame to check for leaks.
- Do not smoke during testing.
- Do not test indoors.
- A leak check must be performed whenever the gas cylinder is replaced.

1. Make sure the control knob is on the "OFF" position.
2. Make sure the gas cylinder is correctly and securely connected to the pressure regulator, without over tightening it.
3. Turn on the gas cylinder valve. Apply 50% soap and 50% water solution to the gas hose and connections between the control knob and gas cylinder.
4. If something is leaking, you will see bubbles form. In case of leaks, turn off the gas supply, undo the leaking connection, re-connect and try again. If the leak persists, consult Sunjoy Industries Customer Service Center for assistance.

TIPS:

Before Beginning

- Read the instructions thoroughly.
- Check and make sure that all parts are present.
- For future reference, save this instruction sheet.
- If the appliance is not in use, the gas must be turned off at the supply cylinder.

TO LIGHT

Before each use, inspect all hose. Replace hose if there are any signs of cutting, wear or abrasion.

(1) Turn the T-handle on the gas tank counter-clockwise to open the gas supply.

(2) Light the firepit as below steps:

- A. Push and turn the Control Knob counter-clockwise to the "LOW" position. Keep pushing the Control Knob. Meanwhile press and hold the Electric Ignitor to light the burner .
- B. After ignition, release the Electric Ignitor. Continue to push and hold the Control Knob for 15 seconds.
- C. If ignition does NOT immediately take place in seconds, push and turn the Control Knob clockwise to "OFF". Wait 5 minutes, then repeat the lighting procedure as above.

MAINTENANCE

- ※ Push the Control Knob and turn clockwise to the "OFF" position.
- ※ Turn the T-handle on the gas tank clockwise to close the gas supply if not in use for a long time.
- ※ Keep your firepit free and clear from combustible materials.
- ※ Visually inspect burner for obstructions, keep tank enclosure free and clear from debris.
- ※ After the burner and lava rocks are completely cooled down, use a soft brush to get rid of the mild stains, loose dirt and soil. Wipe with a soft cloth.
- ※ Store the gas cylinder in a dry, well-ventilated and sheltered area protected from inclement weather and dust, out of reach of children, and not in a building, garage or any other closed area.
- ※ Be careful not to let any powder or solvent come in contact with painted or plastic components as damage may occur.
- ※ Store the fire pit in a cool dry place away from direct sunlight.
- ※ The propane cylinder must be disconnected and removed from the fire pit before the appliance can be stored indoors.
- ※ Make sure both the gas and the fire pit are turned off before changing battery. Please refer to the process of assembling battery.
- ※ Use Manufacturer approved or supplied replacement parts and accessories only. Otherwise may void the warranty of this product and result in a hazardous condition.
- ※ If replacement parts are needed, please contact Hayneedle, Inc. Customer Service Center at 1.888.880.4884
- ※ Installation and repair should be done by a qualified service person. The appliance should be inspected before use and at least annually by a qualified service person. More frequent cleaning may be required as necessary. It is imperative that control compartment, burners and circulating air passageways of the appliance be kept clean.



**For assistance with assembly, please contact customer service
1-888-880-4884**