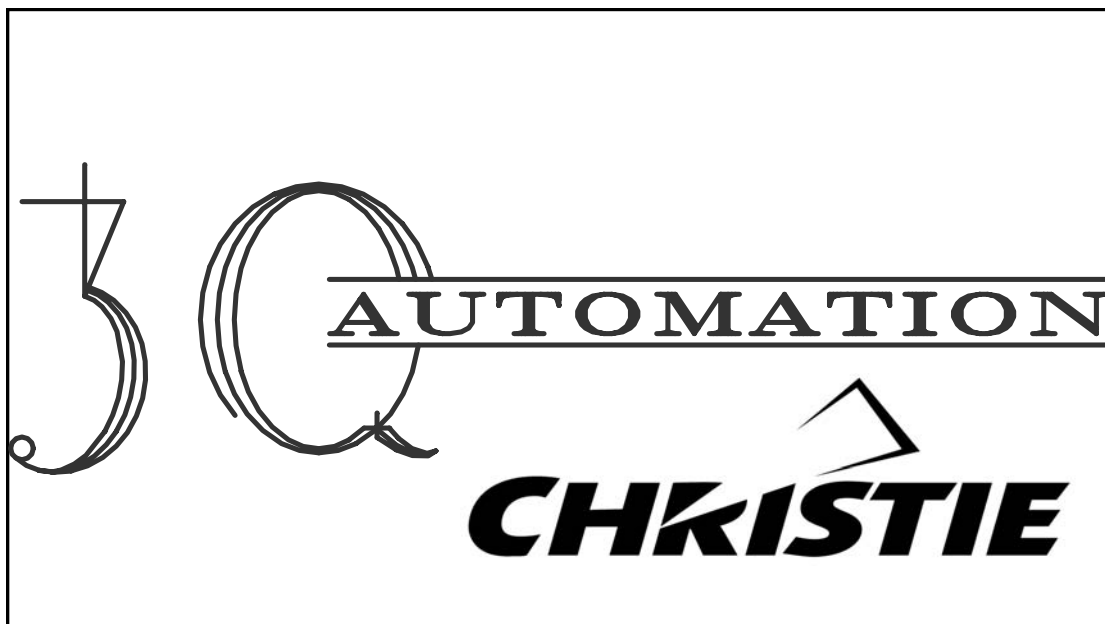




**CHRISTIE**

# Operating Instructions

For



**TD-685**

CHRISTIE INC.  
10550 Camden Dr.  
Cypress, Ca 90630  
714-236-8610 Fax 714-229-3185

## ***General Description***

The CHRISTIE 3Q is a console mounted, cue driven automation designed specifically for the CHRISTIE P35GPS Projector/SLC console combination. This cost efficient design provides control of most booth and auditorium functions including: the projector motor, Xenon lamp, changeover douser, house light dimmer (*up/mid/down*), audio switching (*Stereo/SR/Digital/Non-sync*), stage curtains, slide projector, remote status indication (*run/stop/fault/ready*), built-in two projector interlock, full remote capability, lens turret/masking and Xenon Auto-Focus control (*for properly equipped projectors and consoles*). The automation provides manual control of all functions and cues as well as two user assignable option switches pre-wired to the main terminal board.

The automation utilizes a reliable cue detector instead of a cam timer, to initiate the various automated functions. A cue expander may be utilized to provide up to four additional custom functions (*i.e. special dimmer functions, mid-show stop, additional sound formats, etc.*). The compact printed circuit board design provides reliable, trouble-free operation with the familiarity and simplicity of electro-mechanical relays.

### **SUMMARY OF FEATURES**

- ◆ Designed specifically for P35GPS/SLC combination
- ◆ Separate trailer and feature pre-selects for picture and audio formats
- ◆ Reliable relay and PCB based design
- ◆ Built-in two projector interlock
- ◆ Full manual controls for all functions including cues
- ◆ All low voltage controls on PCB
- ◆ LED illuminated run, stop, and cue buttons for long service life
- ◆ Panel mounted alarm buzzer
- ◆ Two pre-wired, user assignable option switches
- ◆ Full remote control and status capabilities

## ***NORMAL SHOW SEQUENCE***

### ◆ **Start Button**

Motor On  
Lamp On  
Douser Close  
Slide Projector Off  
Lens/Masking/AutoFocus to Start Format (*selectable*)

### ◆ **Start Cue ----- at beginning of trailers**

Dimmer Mid or Down  
Curtain Open  
Douser Open  
Start Audio to Stereo or SR (*selectable*)  
Status Indicator to Run

### ◆ **Feature Cue ----- at beginning of feature**

Dimmer Down  
Feature Audio to Stereo, SR or Digital (*selectable*)  
Lens/Masking/AutoFocus to Feature Format (*selectable*)

### ◆ **Show End Cue ----- at end of feature credits**

Curtain Close  
Douser Close  
Dimmer Up  
Audio to Non-Sync  
Lens/Masking/Auto Focus to Start Format (*selectable*)

### ◆ **Film Run Out**

Motor Off  
Lamp Off  
Slide Projector On  
Status Indicator to Stop

◆ **Fault (Film Break)**

Motor Off  
Lamp Off  
Dimmer Up  
Slide Projector On  
Status Indicator to Fault  
Alarm Sounds

◆ **Cancel Alarm**

Shuts off Alarm  
Douser Close  
Audio to Non-Sync

## ***CUE PLACEMENT***

The **CHRISTIE 3Q** automation utilizes three different cues for normal show operation.

- ◆ **Show Start** - (inboard cue)
  - placed two feet prior to the start of the trailers.
- ◆ **Feature** - (center cue)
  - placed two feet prior to the start of the feature or policy trailer.
- ◆ **Show End** - (outboard cue)
  - placed two feet prior to the end of the credits.

### **Note**

The automation may be used with any cue sensor which provides at least three cues with consistent duration contact closure when a cue is detected.

Although only three cues are required for normal show operation, an expander board may be added to further customize show operations.

***COMPONENT FUNCTION***

<b>SWITCH</b>	<b>FUNCTION</b>
<b>Start (PB - 1)</b>	Latches Start Relay, engaging motor and lamp. Turret/masking to start format, closes douser, audio to non-sync. Slide projector OFF. Will not start if fail-safes are down. L.E.D. illuminated, green when active.
<b>Stop (PB - 2)</b>	Disengages Start Relay, motor and lamp OFF. Slide projector ON. L.E.D. illuminated, red when active or fail-safes are down.
<b>Motor (S1)</b>	Manual motor control.
<b>Lamp (S2)</b>	Manual lamp control.
<b>Douser (S3)</b>	Manual opening and closing of changeover douser.
<b>Dimmer (S4)</b>	Manual raising or lowering of house lights.
<b>Format (S5)</b>	Manual control of lens turret/aperture/masking/Auto-Focus.
<b>Start Audio (S6)</b>	Selects trailer audio format to Stereo or SR.
<b>Start Format (S7)</b>	Selects trailer picture format to Flat or Scope.
<b>Feature Audio (S8)</b>	Selects feature audio format to Stereo, SR or Digital.

<b>SWITCH</b>	<b>FUNCTION</b>
<b>Feature Format (S9)</b>	Selects feature picture format to Flat or Scope.
<b>Start Cue (PB - 3)</b>	Manual Show Start Cue. Active only when Start Relay is latched. Brings lights to MID, audio to Mono/Stereo, douser open, curtain open.
<b>Feature Cue (PB - 4)</b>	Manual Feature Cue. Active only when Start Relay is latched. Brings lights to LOW, audio to Stereo/SR, feature picture format to Flat or Scope.
<b>Show End Cue (PB - 5)</b>	Manual Show End Cue And Alarm Cancel. Brings lights UP, audio to non-sync, douser close, curtain close, start picture format to Flat or Scope.
<b>Option 1 (S10)</b>	ON/OFF Switch. May be used for interlock activation. Pre-wired to TB5 38-41. <i>(see wiring diagram)</i> .
<b>Option 2 (S11)</b>	Momentary Switch. May be used for manual curtain control. Pre-wired to TB5 42-44. <i>(see wiring diagram)</i> .
<b>Buzzer (LS1)</b>	Sounds alarm if a film break occurs.
<b>Fuse (F1)</b>	Automation main fuse, 2 Amp., 3AGC.

<b>COMPONENT</b>	<b>FUNCTION</b>
<b>P.C.B. Assembly</b>	All low voltage control circuitry.
<b>Start Relay (K1)</b>	Latches through Stop Relay. Holds Power Relay latched engaging motor and lamp.
<b>Stop Relay (K2)</b>	Disengages Start Relay. Relay is latched when fail-safes are down.
<b>Alarm Relay (K3)</b>	Sounds alarm if Stop Relay is latched due to fail-safe. Alarm sounds if show is between the Show Start and Show End Cues.
<b>Show End Relay (K4)</b>	Actuates Show End Cue functions. Disengages Alarm Relay.
<b>Feature Relay (K5)</b>	Actuates all Feature Cue functions.
<b>Show Start Relay (K6)</b>	Actuates all Show Start Cue functions. Latches Alarm Relay.
<b>Power Relay (K7)</b>	Activated by Start Relay engages motor and lamp. 3PDT, 12VAC coil, with 10A rated contacts
<b>Open Relay (K8)</b>	Opens douser and stage curtains. 3PDT, 12VAC coil, with 10A rated contacts.
<b>Close Relay (K9)</b>	Closes douser and stage curtains. 3PDT, 12VAC coil, with 10A rated contacts.
<b>Transformer (T1)</b>	12VAC , 2 Amp transformer. Provides 12V power for automation.

**All relays are 4PDT, 12VAC coil with contacts rated at 5A @125V except where designated.**



## ***INTERLOCK - TWO PROJECTOR***

### **Note**

Make sure both Automations are on the same phase. TB5-25 should read 0 VAC between the two Automations. (*see wiring diagram*).

- ◆ Connect Remote Start (46) to Option 1A Common (38) in each automation.
- ◆ Connect Fail-safe Interlock (45) to Option 1B Common (40) in each automation.
- ◆ Connect Option 1A N.O. (39) and Option 1B N.O. (41) from projector 1 to their corresponding terminals on projector 2.

### **Check**

- Switching on the Option 1 switches in both automations will activate interlock.
- Tie-up both sets of fail-safes to ready position.
- Press start on either automation. Both projectors' motors and lamps will start.
- As the cues pass through each automation, functions will be performed independently as usual.
- Once the Show Start Cue has gone through both automations, fail-safe protection for the interlock will be active. Dropping of the fail-safes on either projector will stop both projectors, raise the house lights, and sound the alarms. Once the Show End Cue has gone through one of the automations, interlock fail-safe will be discontinued and the projectors will shut off independently as the film runs out.

## ***TERMINAL ASSIGNMENT***

### **TB-1 Automation PCB (Reference Only)**

1.	Dimmer Switching Common	(W78)
2.	Dimmer Up	(W79)
3.	Dimmer Mid	(W13)
4.	Dimmer Down	(W80)
5.	Audio Switching Common	(W15)
6.	Start Audio Format	(W62)
7.	Feature Audio Format	(W63)
8.	Non-Sync	(W19)
9.	Show Start Cue	(W64)
10.	Feature Cue	(W81)
11.	Show End Cue	(W82)
12.	Cue Common	(W65)
13.	Fail-Safe	(W83)
14.	Remote Start	(W88)
15.	Ground ( <i>Automation Switching Common</i> )	(W84)
16.	12VAC	(W85)
17.	Run Indicator	(W26)
18.	Stop Indicator	(W27)
19.	Fault Indicator/Alarm	(W86)
20.	Format Switching Common	(W87)
21.	Start Format	(W89)
22.	Feature Format	(W90)
23.	Interlock Fail-Safe ( <i>Input/Output</i> )	(W45)
24.	Buzzer output	(W91)

### **TB-2 Automation PCB (194898-001)**

1.	12 VAC	(W117/W122)
2.	Ground	(W118/W123)
3.	Power Relay	(W119)
4.	Open Relay	(W120)
5.	Close Relay	(W121)
6.	Alarm Active (12VAC when active)	

<b>TB-3</b>	<b>Automation Chassis (195631-001)</b>
-------------	--

1.	Line 115VAC	(W61)
2.	Neutral	(W2)
3.	Ground	(W3)
4.	Motor	(W71)
5.	Motor	(W72)
6.	Lamp	(W73)
7.	Lamp	(W74)
8.	Douser Common	(W75)
9.	Douser Open	(W76)
10.	Douser Close	(W77)
11.	Curtain Common	(W35)
12.	Curtain Open	(W36)
13.	Curtain Close	(W37)
14.	Dry Circuit Common	(W29)
15.	Dry Circuit N.C.	(W30)
16.	Dry Circuit N.O.	(W31)

<b>TB-5</b>	<b>Main Console Terminal Board (Field Terminations)</b>
-------------	---

1.	Line 115VAC Feed to Automation	(W1)
2.	Neutral to Automation	(W2)
3.	Ground	(W3)
4.	Motor	(W4/W71)
5.	Motor	(W5/W72)
6.	Xenon	(W6/W73)
7.	Xenon	(W7/W74)
8.	Douser Common	(W8/W75)
9.	Douser Open	(W9/W76)
10.	Douser Close	(W10/W77)
11.	Dimmer Switching Common	(W11/W78)
12.	Dimmer Up	(W12/W79)
13.	Dimmer Mid	(W13)
14.	Dimmer Down	(W14/W80)
15.	Audio Switching Common	(W15)
16.	Stereo	(W16)
17.	SR	(W17)
18.	Digital	(W18)
19.	Non-Sync	(W19)
20.	Show Start Cue	[ N.O. CIRCUIT](W20/W64)
21.	Feature Cue	[ N.O. CIRCUIT](W21/W81)
22.	Show End Cue	[ N.O. CIRCUIT](W22/W82)

23.	Fail-Safe ( <i>Fire Alarm Shutdown</i> )	(W23/W83)
24.	Ground ( <i>Switching Common</i> )	(W24/W84)
25.	12VAC	(W25/W85)
26.	Run Indicator	(W26)
27.	Stop Indicator	(W27)
28.	Fault Indicator/Alarm	(W28/W86)
29.	Dry Circuit Common	(W29)
30.	Dry Circuit N.C. [ 15A CONTACT]	(W30)
31.	Dry Circuit N.O.	(W31)
32.	Lens Common	(W32/W87)
33.	Lens Flat	(W33)
34.	Lens Scope	(W34)
35.	Curtain Common	(W35)
36.	Curtain Open	(W36)
37.	Curtain Close	(W37)
38.	Option 1A Common	(W38)
39.	Option 1A N.O.	(W39)
40.	Option 1B Common	(W40)
41.	Option 1B N.O.	(W41)
42.	Option 2 Common	(W42)
43.	Option 2 A	(W43)
44.	Option 2 B	(W44)
45.	Fail-Safe Buss ( <i>Input/Output</i> )	(W45)
46.	Start Buss [ N.O. CIRCUIT]	(W46/W88)
47.	Masking Common	(W47)
48.	Masking Flat	(W48)
49.	Masking Scope	(W49)

**Note**

Unless otherwise noted, all circuits are dry contact closure and are rated for low voltage controls only.

## ***PARTS LIST***

<b>COMPONENT</b>	<b>PART NUMBER</b>
------------------	--------------------

◆ **Push Buttons**

Start (Green)	578000-079
Stop (Red)	578000-078
Cues (White)	578000-077

◆ **Switches**

S1, S2, S10 (DPST)	578722-024
S3, S4, S5, S11 (SPDT, Mom.)	578712-018
S6, S7, S8 (SPDT)	578722-017
S9 (SPDT, Center off)	578712-003

◆ **Relays**

K1-K6 (4PDT, Small)	599000-122
K7-K9 (3PDT, Large)	571312-001

◆ **Other**

Buzzer	546900-035
Transformer	587700-077
Fuse	546102-011

◆ **Cable**

Automation Cable Assembly	195838-001
---------------------------	------------

## Appendix A: Wiring Diagrams

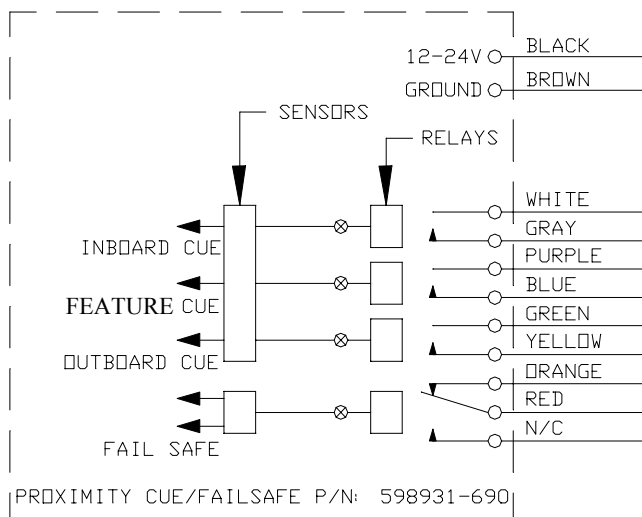
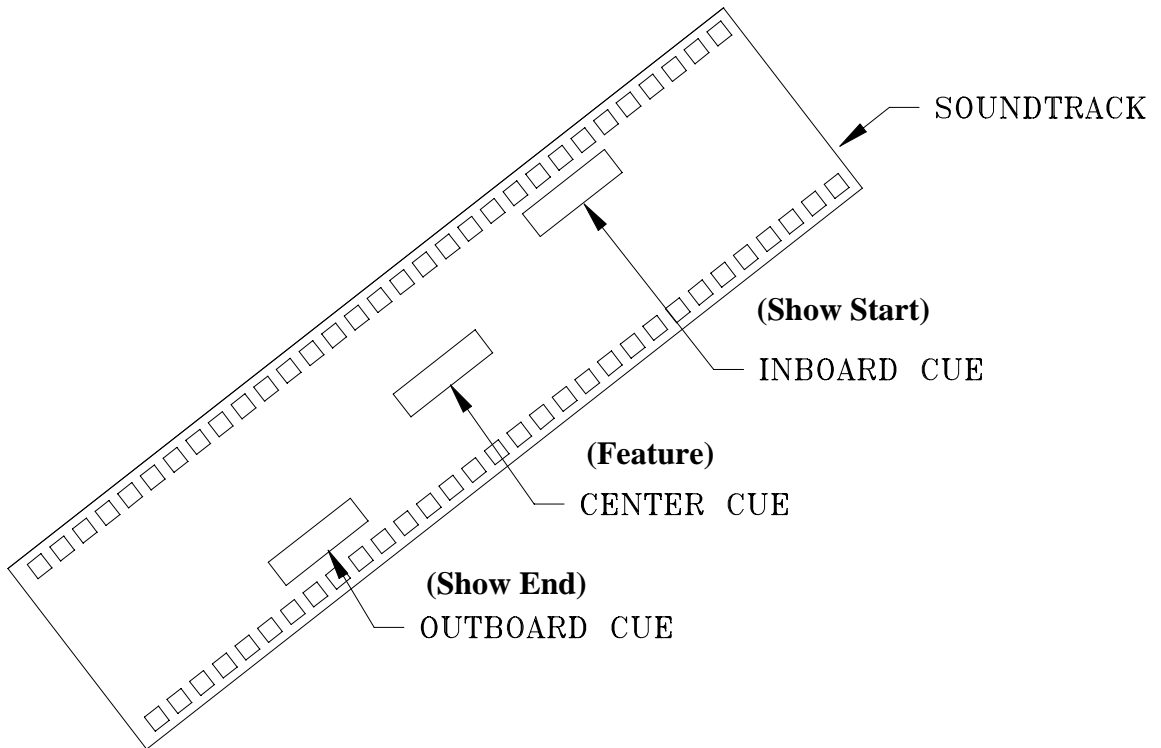
---

Appendix A contains wiring diagrams associated with options available with the 3Q automation.

- Cue Detector Wiring, for 598931-690 3Q Failsafe
- Option One Wiring, Two Projector Interlock
- Option Two Wiring, Manual Curtain Control
- Option Two Wiring, Manual Masking Control
- 3Q Status Panel Wiring
- 3Q Status Wiring Riser Diagram
- Phase Check, Two Projector Interlock
- 3Q Wiring w/o P35GPS Projector
- 3Q Automation Schematic

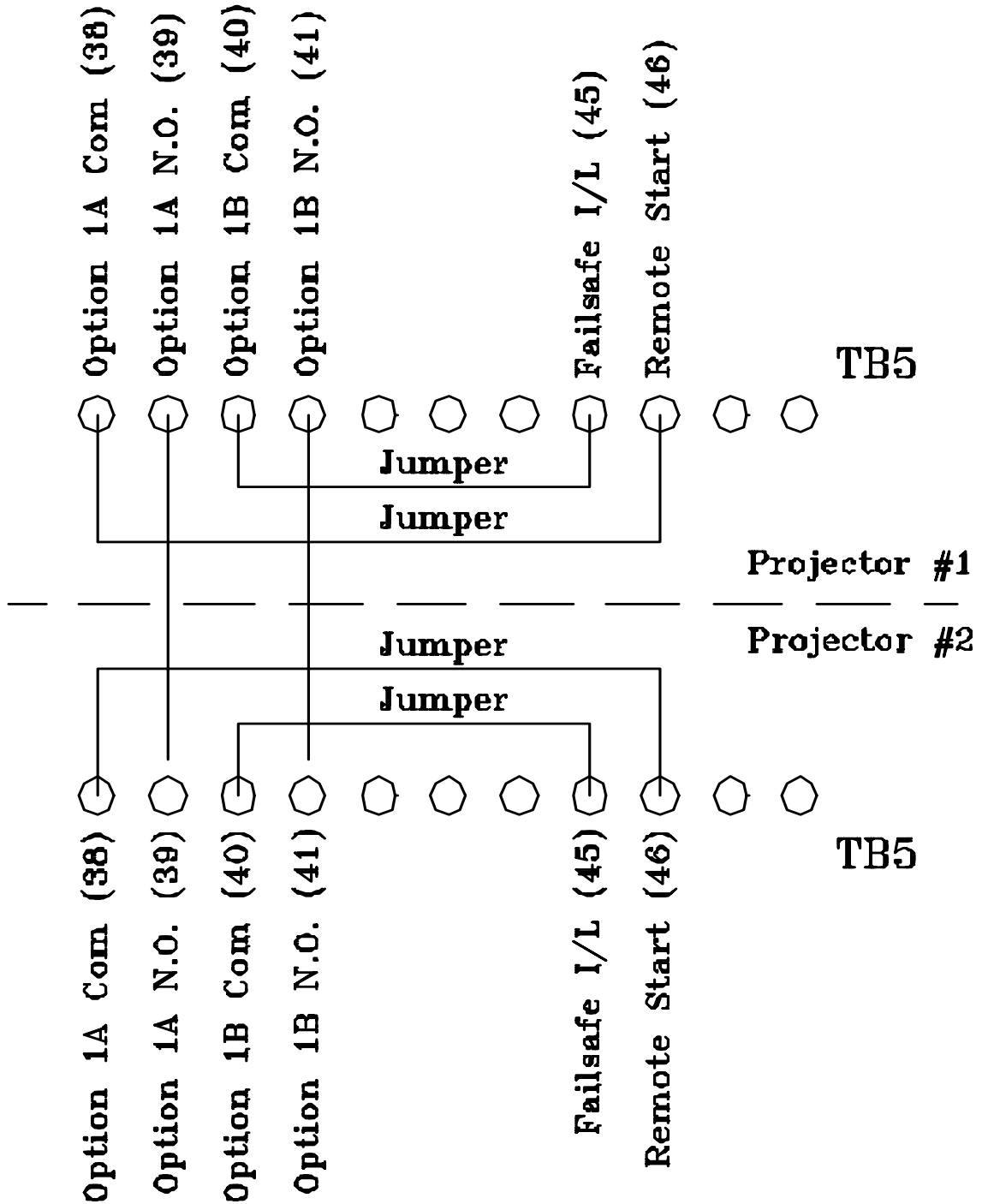
# Cue Detector

## Wiring and Cue Placement



# Option 1 Wiring

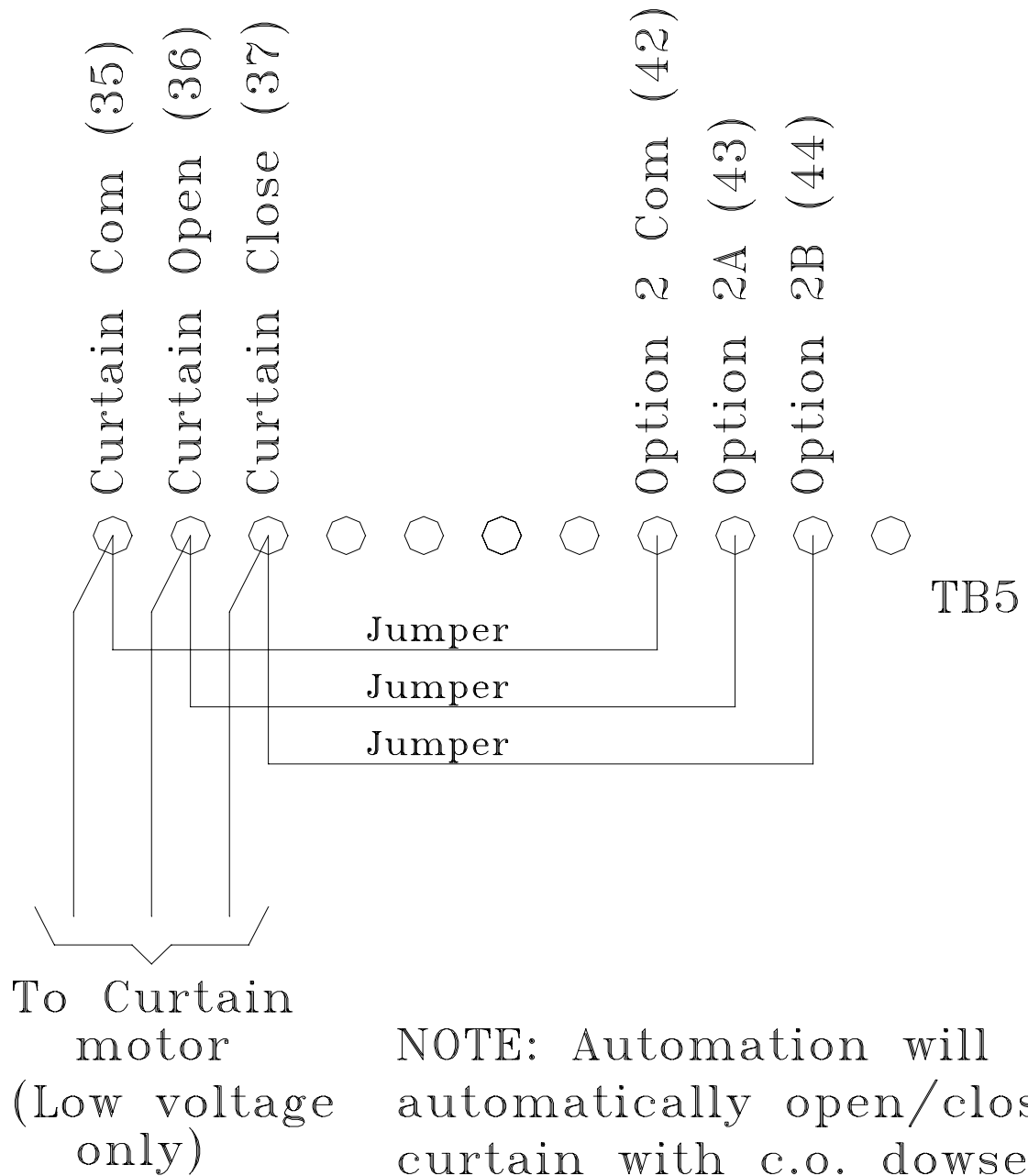
## Two Projector Interlock





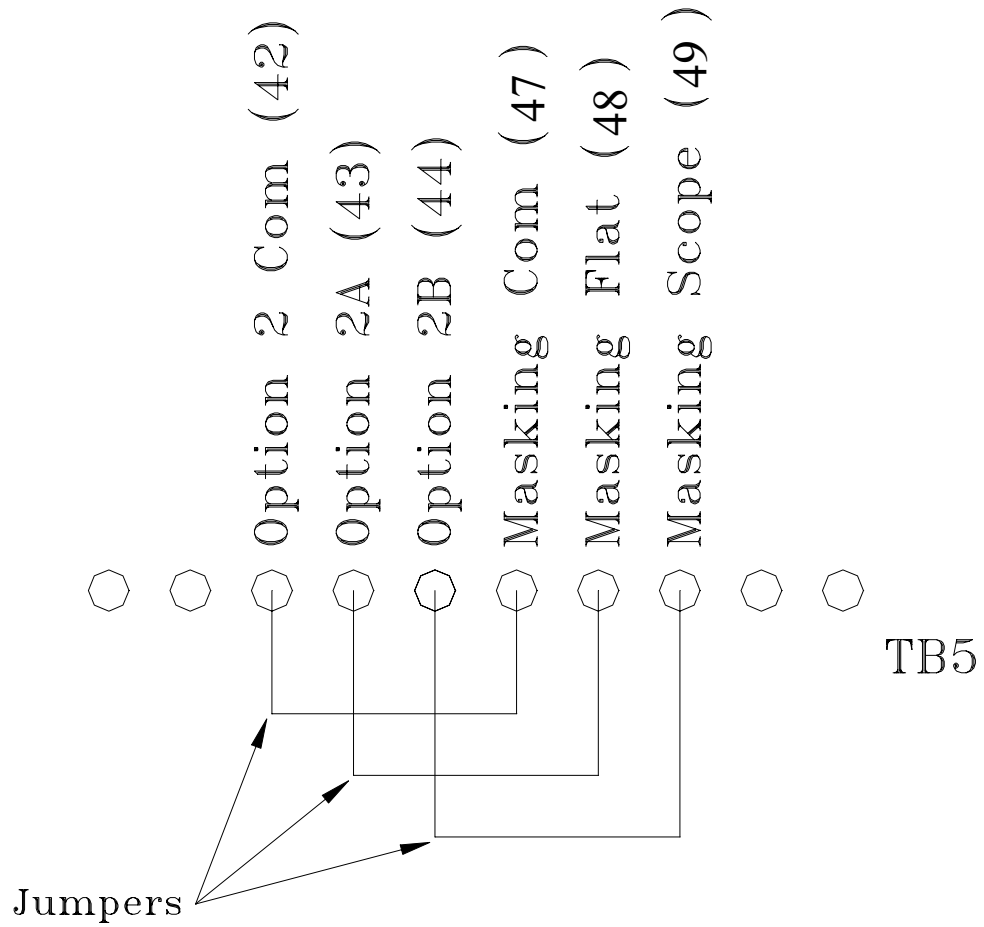
# Option 2 Wiring

## Manual Curtain Control



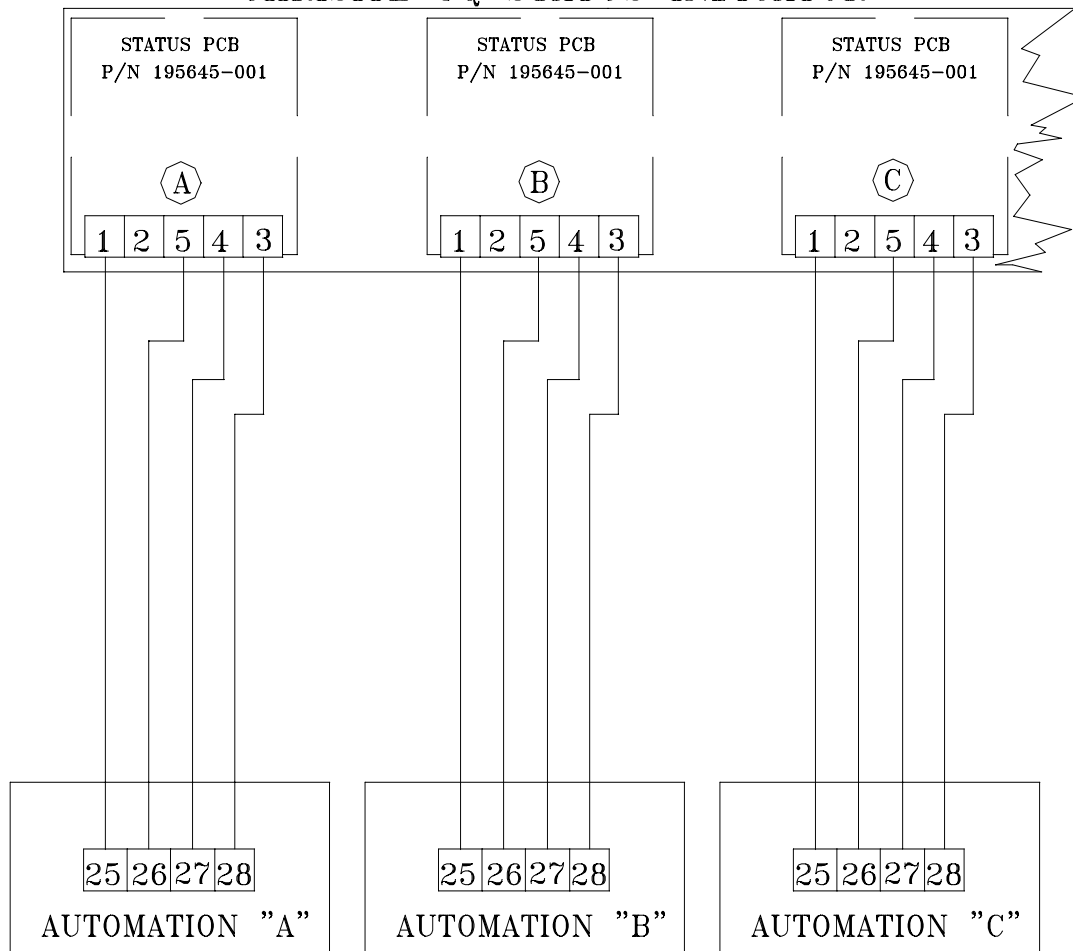
# Option 2 Wiring

## Independent Masking Control



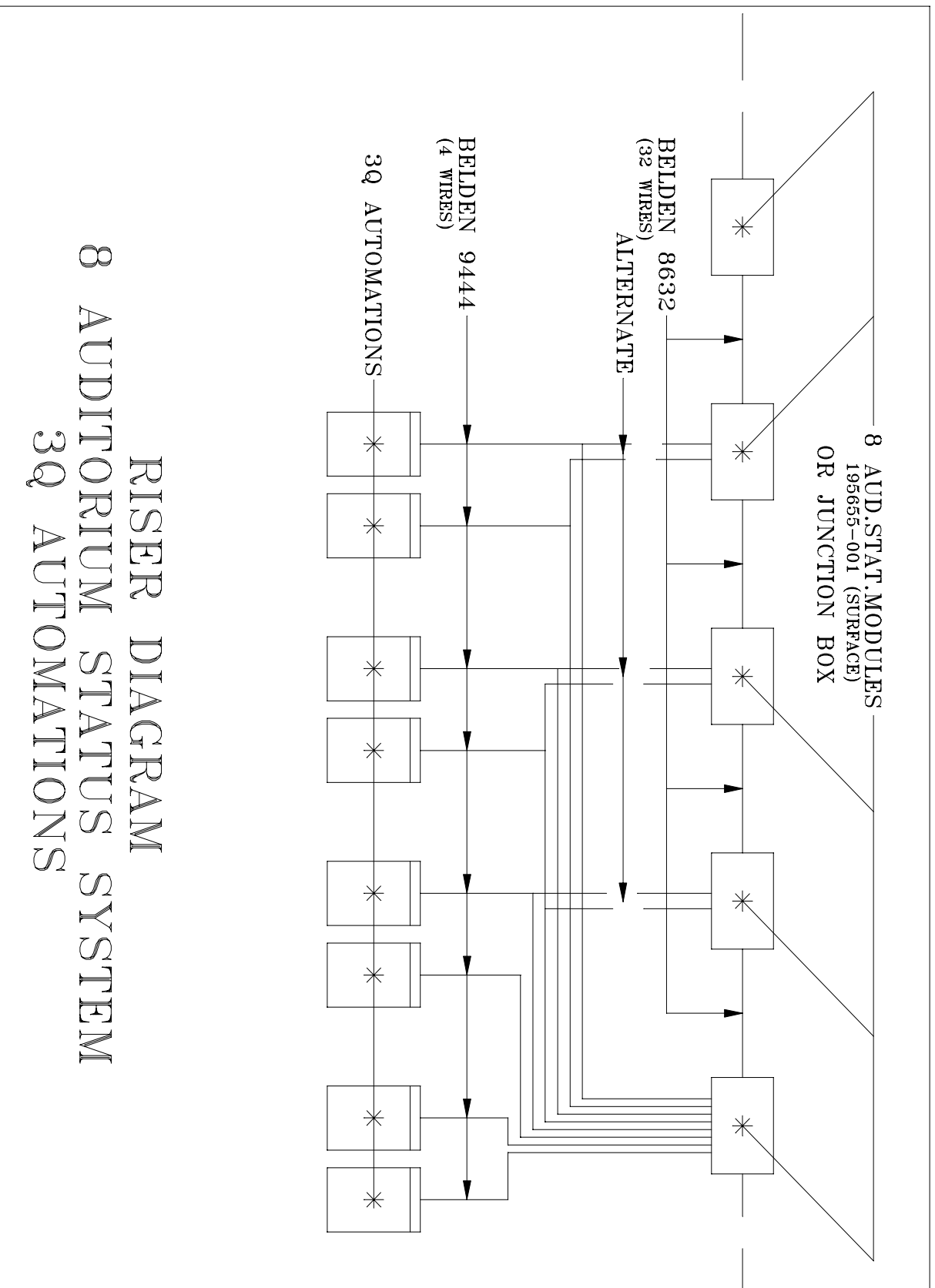
NOTE: Automation will automatically change masking with turret.

# CHRISITE 3Q STATUS INDICATOR



# CHRISTIE 3Q STATUS INTERFACE

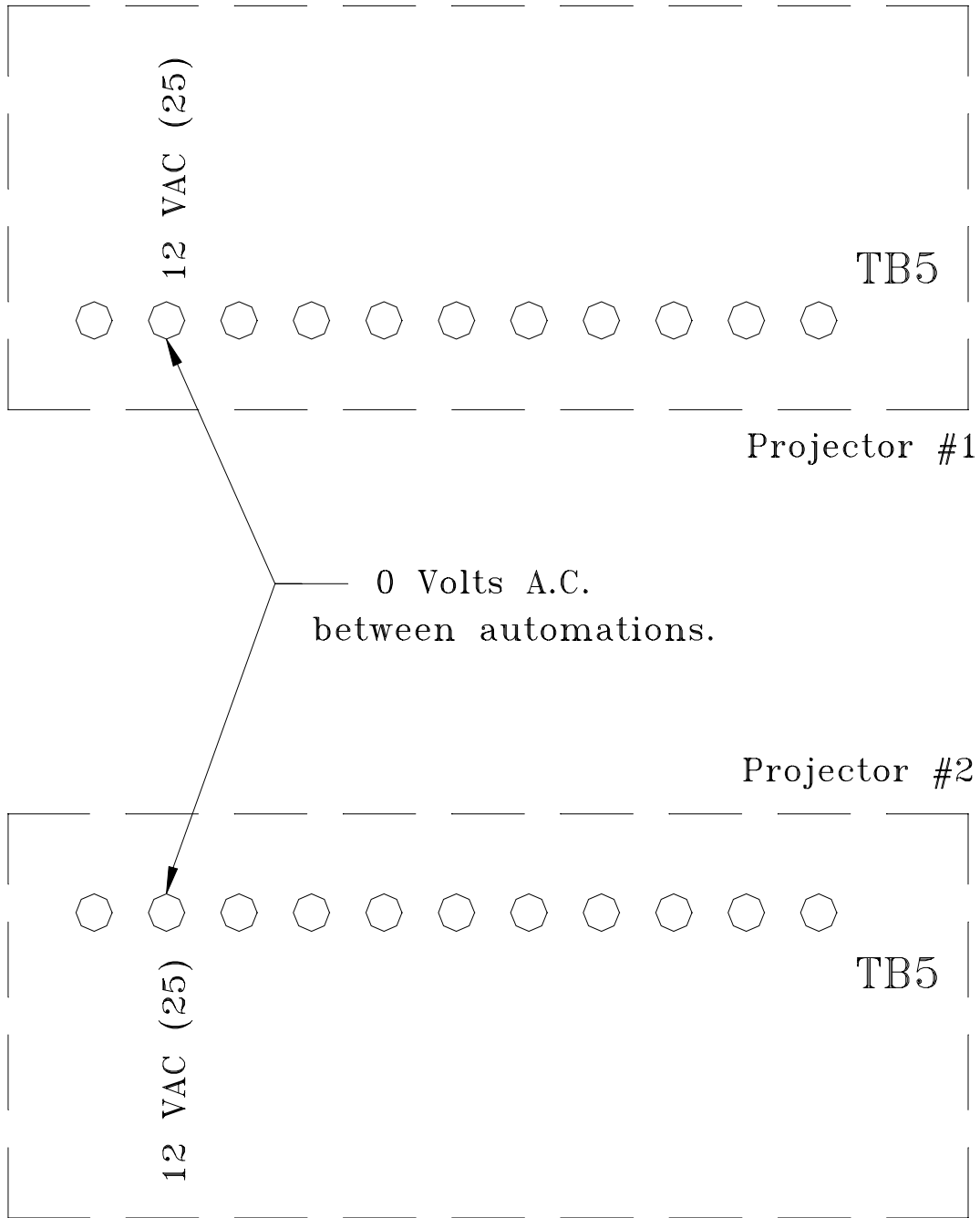
P.C.B. WIRING TO AUTOMATION MAIN TERMINAL BOARD.



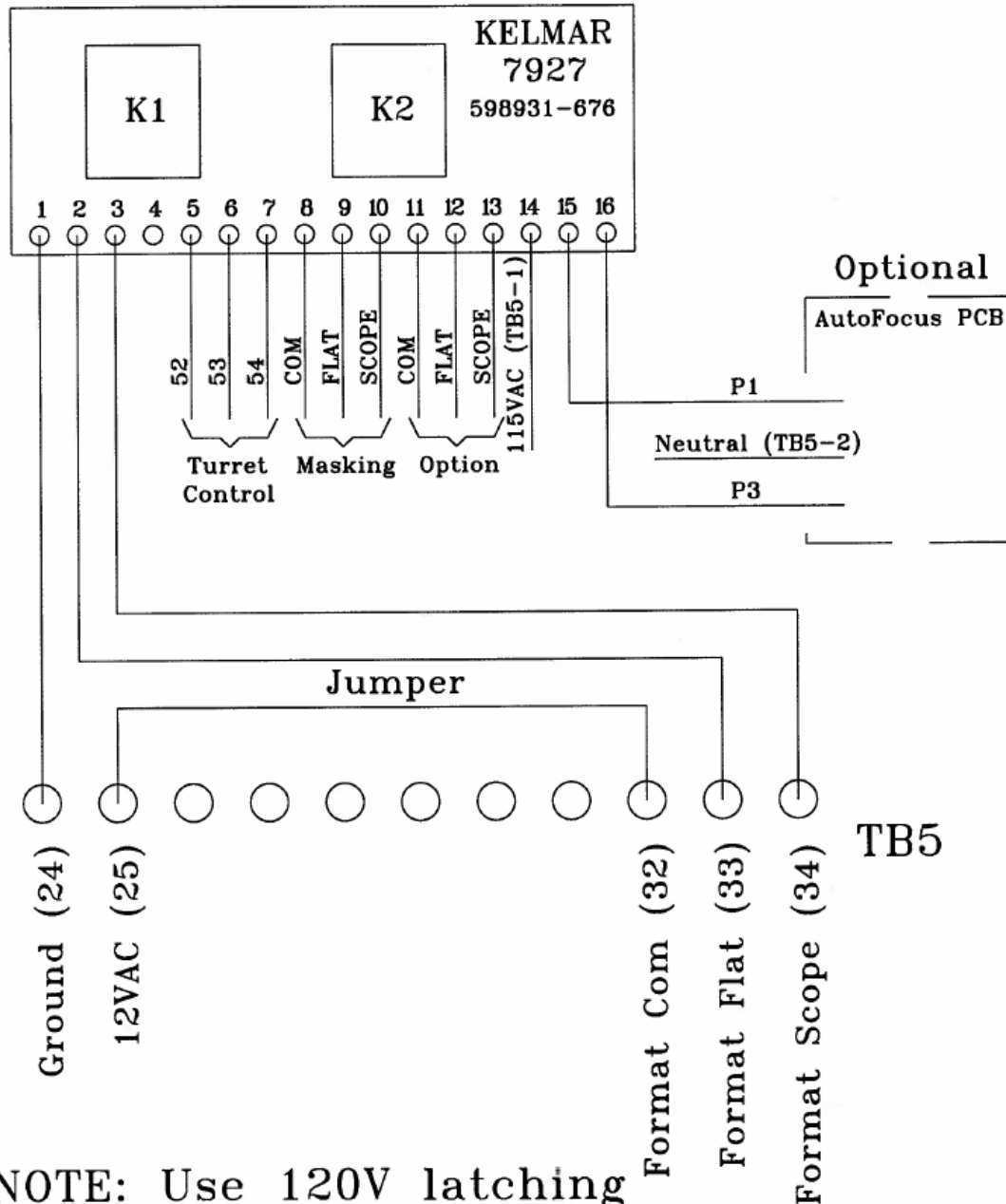
RISER DIAGRAM  
 8 AUDITORIUM STATUS SYSTEM  
 3Q AUTOMATIONS

# Phase Check

## Two Projector Interlock



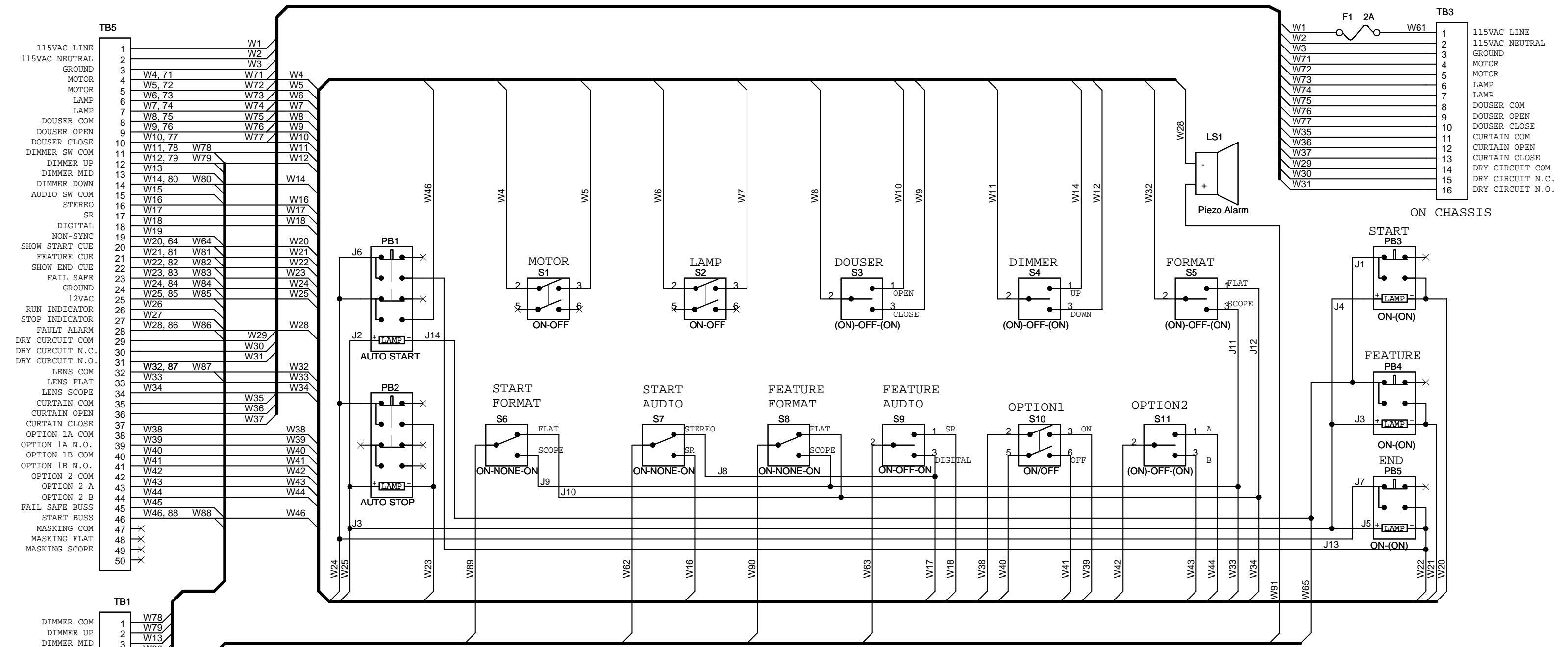
# 3Q Without P35GP AutoTurret/Masking/AutoFocus



NOTE: Use 120V latching relay for AutoFocus.

THESE DRAWINGS AND SPECIFICATIONS ARE THE EXPRESS PROPERTY OF CHRISTIE DIGITAL SYSTEMS AND SHALL NOT BE REPRODUCED OR COPIED OR USED AS THE BASIS FOR THE MANUFACTURE OR SALE OF APPARATUS WITHOUT EXPRESS WRITTEN PERMISSION OF CHRISTIE DIGITAL SYSTEMS.

REVISIONS			
REV.	DESCRIPTION	DATE	APPROVED
	REV PER ECO# 23751	02/27/96	GJS
A	REV PER ECO# 23766	04/01/96	GJS
2	REV PER ECO# 05-2499	08/04/05	GVB



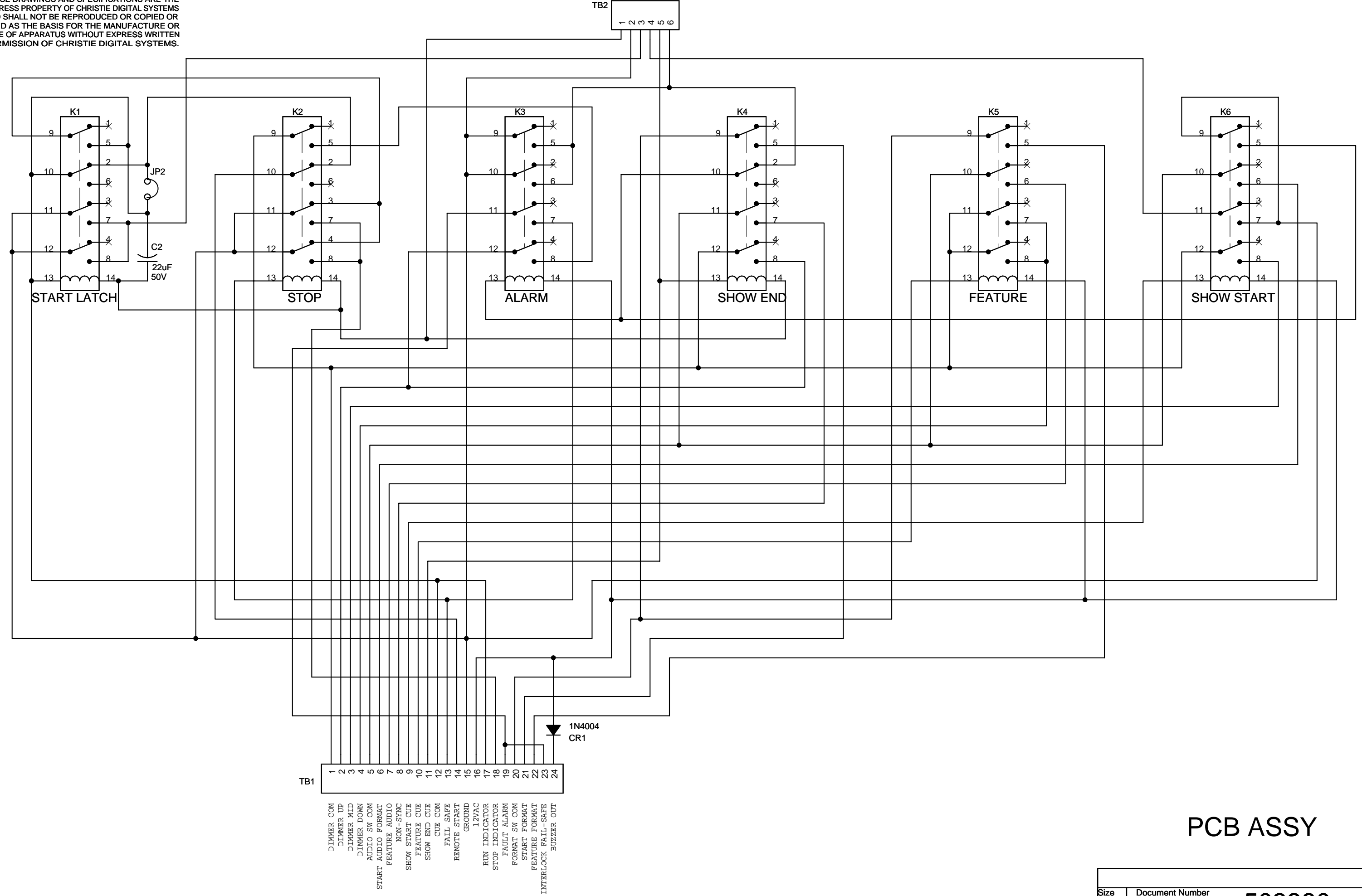
Terminal	Wire	Terminal	Wire
1	W78	1	W1
2	W79	2	W2
3	W13	3	W3
4	W80	4	W4
5	W15	5	W5
6	W62	6	W6
7	W63	7	W7
8	W19	8	W8
9	W64	9	W9
10	W81	10	W10
11	W82	11	W11
12	W83	12	W12
13	W88	13	W13
14	W84	14	W14
15	W85	15	W15
16	W26	16	W16
17	W27	17	W17
18	W86	18	W18
19	W87	19	W19
20	W89	20	W20
21	W90	21	W21
22	W45	22	W22
23	W91	23	W23
24		24	W24

# FRONT PANEL AND HARNESS

3Q	-
NEXT ASSY	USED ON
APPLICATION	DO NOT SCALE DRAWING

QTY REQD	CODE IDENT	PART OR IDENTIFYING NO.	NOMENCLATURE OR SPECIFICATION	MATERIAL SPECIFICATION	ITEM NO.
UNLESS OTHERWISE SPECIFIED DIMENSIONS ARE IN INCHES TOLERANCES ARE FRACTIONS DECIMALS ANGLES ± .XX± .XXX± ±					
MATERIAL			CONTRACT NO.		
FINISH			APPROVALS DATE		
3Q			DRAWN G. BERGMAN 07/07/05		
NEXT ASSY			CHECKED		
USED ON			APPROVED		
APPLICATION			ISSUED		
PARTS LIST					
		<h2>3Q AUTOMATION WIRING DIAGRAM</h2>			
SIZE	CAGE NO.	DWG NO.	REV.		
B		503380	2		
SCALE	Friday, August 05, 2005		SHEET 1 OF 3		
NONE					

THESE DRAWINGS AND SPECIFICATIONS ARE THE EXPRESS PROPERTY OF CHRISTIE DIGITAL SYSTEMS AND SHALL NOT BE REPRODUCED OR COPIED OR USED AS THE BASIS FOR THE MANUFACTURE OR SALE OF APPARATUS WITHOUT EXPRESS WRITTEN PERMISSION OF CHRISTIE DIGITAL SYSTEMS.



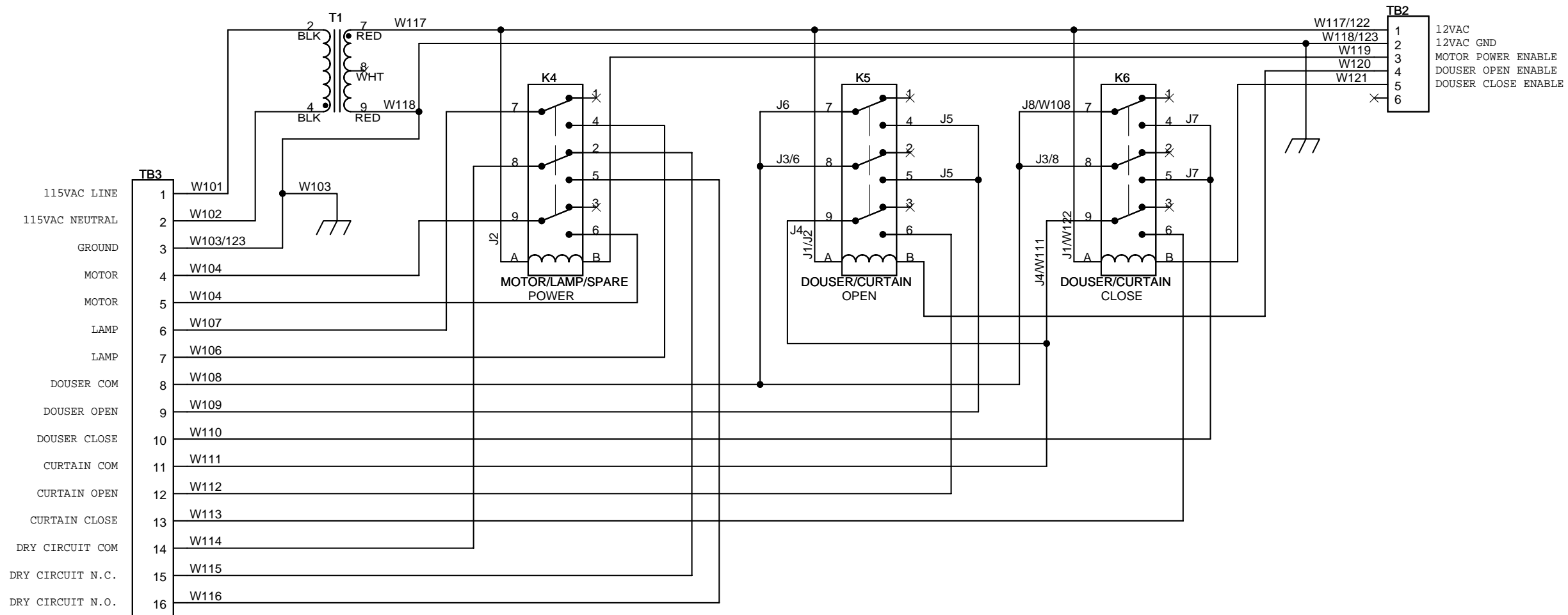
- TB1
- 1 DIMMER COM
  - 2 DIMMER UP
  - 3 DIMMER MID
  - 4 DIMMER DOWN
  - 5 AUDIO SW COM
  - 6 START AUDIO FORMAT
  - 7 FEATURE AUDIO
  - 8 NON-SYNC
  - 9 SHOW START CUE
  - 10 FEATURE CUE
  - 11 SHOW END CUE
  - 12 CUE COM
  - 13 FAIL SAFE
  - 14 REMOTE START
  - 15 GROUND
  - 16 12VAC
  - 17 RUN INDICATOR
  - 18 STOP INDICATOR
  - 19 FAULT ALARM
  - 20 FORMAT SW COM
  - 21 START FORMAT
  - 22 FEATURE FORMAT
  - 23 INTERLOCK FAIL-SAFE
  - 24 BUZZER OUT

# PCB ASSY

Size <b>B</b>	Document Number <b>503380</b>	Rev <b>2</b>
Date: Thursday, August 04, 2005	Sheet 2 of 3	



THESE DRAWINGS AND SPECIFICATIONS ARE THE EXPRESS PROPERTY OF CHRISTIE DIGITAL SYSTEMS AND SHALL NOT BE REPRODUCED OR COPIED OR USED AS THE BASIS FOR THE MANUFACTURE OR SALE OF APPARATUS WITHOUT EXPRESS WRITTEN PERMISSION OF CHRISTIE DIGITAL SYSTEMS.



# POWER RELAYS

Size	Document Number	Rev
<b>B</b>	<b>503380</b>	<b>2</b>
Date:	Thursday, August 04, 2005	Sheet 3 of 3