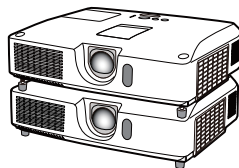


## Projector

# CP-X4021N/CP-X5021N CP-WX4021N

## User's Manual (detailed) Instant Stack Guide



Thank you for purchasing this product.

This manual is intended to explain only [Instant Stack](#) feature. Other than what is mentioned in this manual, please see other manuals of this product.

## Features

This projector can be used with one more same type projector to make one image on one screen with [Instant Stack](#) feature.

The two projectors can work simultaneously to make the image brighter.

Moreover, if you connect two projectors with RS-232C cross-over cable, it turns to a kind of intellectual stacking system. The two projectors can work alternately by themselves, and once one projector has an accident the other voluntarily starts to work to keep your presentation going.

These features, generically called [Instant Stack](#), provide you with the broad use.

**⚠ WARNING** ► Before using this product, be sure to read all manuals for this product. After reading them, store them in a safe place for future reference.  
► Follow all the instructions in the manuals or on the product. The manufacturer assumes no responsibility for any damage caused by mishandling that is beyond normal usage defined in the manuals.

**NOTE** • The information in this manual is subject to change without notice.  
• The manufacturer assumes no responsibility for any errors that may appear in this manual.  
• The reproduction, transfer or copy of all or any part of this document is not permitted without express written consent.

## Trademark acknowledgment

All the trademarks in this manual are the properties of their respective owners.

# Contents



## 1. Introduction .....3

- 1.1 Entries and graphical symbols explanation ..... 3
- 1.2 Important safety instruction ..... 3
  - For Instant Stack feature ..... 3
  - For general installation ..... 5
- 1.3 Basic information and preparation ..... 6
  - Instant Stack ..... 6
  - Intellectual Stack and Simple Stack..... 6
  - Remote control for Intellectual Stack and Simple Stack ..... 6
  - Installation styles ..... 6
  - Tentative naming of two projectors ..... 6

## 2. Installation .....7

- 2.1 Preparation with powered up..... 7
- 2.2 Installation of the first projector (Set **A**) ..... 8
  - Removing pocket caps ..... 8
  - Preparing of elevator feet ..... 8
  - Deciding installation position ..... 8
  - Setting up Set **A**..... 9
- 2.3 Installation of the second projector (Set **B**) ..... 11
  - Piling up projectors ..... 11
  - Connecting projectors..... 11
  - Setting up Set **B**..... 12
- 2.4 Confirmation of Main & Sub setting ..... 14
- 2.5 Fine adjustment of image position ..... 15
  - For Intellectual Stack users ..... 15
  - For Simple Stack users..... 16



## 3. Setting on STACK menu ..17

- 3.1 Displaying STACK menu ..... 17
- 3.2 Selecting Main, Sub or off ..... 18
- 3.3 Selecting lamp working mode..... 19
- 3.4 Selecting lamp switching mode .. 21
- 3.5 Selecting input source to Sub..... 22
- 3.6 Exiting STACK menu ..... 23
  - In STACK menu ..... 23
  - In a dialog from STACK menu ..... 23
- 3.7 Important information for Intellectual Stack ..... 24

## 4. Connecting cables .....27

- 4.1 Connecting RS-232C cable ..... 27
- 4.2 Connecting signal cables..... 28
  - Inputting image to Sub from Main..... 28
  - Inputting image to Sub and Main individually..... 28

## 5. Setting for input port on menu .....29

- 5.1 Preparing menu operation..... 29
- 5.2 Checking Main projector's operating status ..... 29
- 5.3 Starting Main projector ..... 30
- 5.4 Setting on menu ..... 31
  - Inputting image to Sub from Main - Computer signal ..... 31
  - Inputting image to Sub from Main - Video signal (either COMPONENT or VIDEO) ... 32
  - Inputting image of Sub and Main individually..... 31

## 6. Restriction on Schedule function .....34

## 7. Troubleshooting .....36

# 1. Introduction

## 1.1 Entries and graphical symbols explanation

The following entries and graphical symbols are used for the manuals and the product as follows, for safety purpose. Please know their meanings beforehand, and heed them.

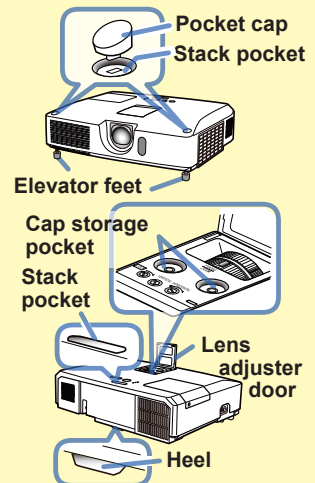
- ⚠ **WARNING** This entry warns of a risk of serious personal injury or even death.
- ⚠ **CAUTION** This entry warns of a risk of personal injury or physical damage.
- NOTICE** This entry notices of fear of causing trouble.

## 1.2 Important safety instruction

The followings are important instructions for safely using the product in [Instant Stack](#). First of all, read the following instructions and be sure to follow them always when using the [Instant Stack](#) of this product.

### For Instant Stack feature

- ⚠ **WARNING** ► Take a special care not to fall the stacked projectors.
- When stacking two projectors, make sure the elevator feet and heel of the upper projector are inserted into the corresponding pockets of the lower projectors. (📖11)
  - When using the [Instant Stack](#) by piling up two projectors, you can change the projection angle by adjusting the elevator feet of the unit that is placed underneath. (📖8) Exercise care to prevent the stacked projector from falling off or tipping over while adjusting the elevator feet.
  - Pile up two projectors as maximum and do not pile up three projectors or more.
  - Do not install the projectors that are piled up with using the stack pockets, elevator feet and heel of the projectors at a place higher than man.
  - Do not install the projectors that are piled up with using the stack pockets, elevator feet and heel of the projectors on a ceiling.
  - Do not touch the stacked projectors except when instructions are given in this manual. Do not hit the projectors with any type of object.



(continued on next page)

## 1.2 Important safety instruction - For Instant Stack feature (continued)

**⚠ WARNING** ► Be sure to storage the pocket caps reliably and safely inside of the lens adjuster door to prevent children and pets from swallowing the caps, when taking the caps from the in stack pockets. (📖3) If they swallow the caps, consult a physician immediately for emergency treatment.

**⚠ CAUTION** ► Be careful not to injure your nail and finger to remove the pocket caps. (📖3)

**NOTICE** ► **Instant Stack** is a feature that brings you a very convenient way to pile up or line up two projectors. The images projected from the two projectors may not be able to be finely superimposed on screen depending on the position or environmental of the projectors. Especially, if the screen is curved or distorted or unlevel, the images will not be finely superimposed.

- Just after turning on, the projected images will not be so stable since the temperature inside of the projectors is rising. Wait 20 minutes or more after turning on, before you start to adjust images to superimpose.
- The images may be shifted by temperature change, vibration and shock of being hit by something. When you use **Instant Stack**, install them in stable environment. If the images are shifted, adjust them again. (📖9, 12, 15)
- The images may be shifted with time by the tension or weight of connected cables. Pay attention to arrangement of cables not to place burden to the projectors.
- It may be happened to make a mechanical noise and degrade image quality by sympathetic vibration with the piled up projectors if the volume of built-in speakers is set much higher. In this case, check the volume setting on both projectors, and lower the volume to remove such phenomena or place the projectors side by side.
- With RS-232C connection between two projectors, a projector as **Main** can control the other as **Sub**, which is a feature called as **Intellectual Stack**. (📖11) If you use the feature, you cannot use RS-232C communication to control projectors, since RS-232C function is occupied with **Intellectual Stack**. If you wish to control projectors, use LAN connection that can be connected with one of the projectors.
- When you use **Intellectual Stack**, the operations or setting of some functions are restricted. Refer to this manual for detail. (📖34)

**For general installation**

**⚠ WARNING ►** Install the projector where you can access the power outlet easily.

► Do not subject the projector to unstable conditions. Install the projector in a stable horizontal position.

- Do not use any mounting accessories except the accessories specified by the manufacturer. Read and keep the manuals of the accessories used.

- For special installation such as ceiling mounting, be sure to consult your dealer beforehand. Specific mounting accessories and services may be required.

► Do not install the projector near thermally conductive or flammable things.

► Do not place the projector where any oils, such as cooking or machine oil, are used.

► Do not place the projector in a place where it may get wet.

**⚠ CAUTION ►** Place the projector in a cool place with sufficient ventilation.

- Keep a space of 30 cm or more between a side of the projector and other objects such as a wall. If you install two projectors in [Style 2 \(📖6\)](#), keep a space of 30 cm or more between the two projectors.

- Do not stop up, block nor cover the projector's vent holes.

- Do not place the projector at places that are exposed to magnetic fields, doing so can cause the cooling fans inside the projector to malfunction.

► Avoid placing the projector in smoky, humid or dusty place.

- Do not place the projector near humidifiers. Especially for an ultrasonic humidifier, chlorine and minerals contained in tap water are atomized and could be deposited in the projector causing image degradation or other problems.

**NOTICE ►** Position the projector to prevent light from directly hitting the projector's remote sensor.

- Do not place the product in a place where radio interference may be caused.

## 1.3 Basic information and preparation

### Instant Stack

**Instant Stack** is the feature that brings you very convenient way to superimpose the images projected by two projectors. The projector is specially designed to support the feature, and has some functions to support you to install two projectors and superimpose the images.

### Intellectual Stack and Simple stack


**Instant Stack** covers both of the following two features.


If you link two projectors with an RS-232C cable and make necessary setting on the projectors, the projectors will automatically collaborate to work under the setting. This use is called as **Intellectual Stack** in this manual.

If you do not connect an RS-232C cable, the projectors will work individually. This use is called as **Simple Stack** in this manual.

### Remote control for Intellectual Stack and Simple Stack

In **Intellectual Stack** use, one projector is set as **Main** and the other is set as **Sub**.

( 18) If you use **Intellectual Stack**, only the projector as **Main** can receive the remote control signal. Even if you want to operate the other as **Sub**, you need to point at the **Main** with the remote control.

If you use **Simple Stack**, both projectors can receive the remote control signal. To avoid the operation by the remote control to being mixed up, it is recommended to operate one projector by the remote control and to operate the other by the control panel on the projector or wired remote. In this case the other projector should disable the remote control by **KEY LOCK**. ( *Operating Guide* → *OPTION menu*)

### Installation styles

There are following two styles to install two projectors. **Instant Stack** can support both of them.

**Style 1** : Piling them up vertically

**Style 2** : Lining them up horizontally

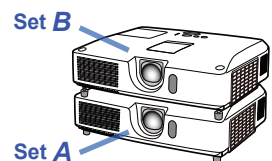
This manual is mainly explained the installation of **Style 1**. If you wish to install two projectors in **Style 2**, refer to the articles you need in this manual.

### Tentative naming of two projectors

To be easy to follow the explanation, the following names are used in the manual for piling up installation.

**Set A** : A projector placed underneath

**Set B** : A projector placed over **Set A**



## 2. Installation

Before installation, read carefully *Important safety instruction* (📖3~5) for safety reason. And note the followings for proper use of the *Instant Stack*.

- When you use *Intellectual Stack*, until you set **STACK MODE** to **SUB** on one projector, both projectors can react to the remote control signal.  
For installation, it is recommended to operate one projector by the remote control and to operate the other by the control panel on the projector or wired remote. In this case the other projector should disable the remote control by **KEY LOCK**. (📖*Operating Guide* → *OPTION menu*)
- Even if the images of **Set A** and **Set B** are fully superimposed once, it may shift over time.  
Adjust the images again to superimpose the image.
- It may be happened to make a mechanical noise and degrade image quality by sympathetic vibration with the two projectors if the volume of built-in speakers is set to much higher.  
In this case, check the volume setting on both projectors, and lower the volume to remove such phenomena. In case the image position is shifted, adjust it again.

### 2.1 Preparation with powered up

If you wish to use *Intellectual Stack* with RS-232C cable connection, the following setting must be confirmed on both of projectors. Otherwise, menus for *Intellectual Stack* on the projectors cannot be operated.

- **STANDBY MODE** in **SETUP** menu: **NORMAL**  
(📖*Operating Guide* → *SETUP menu*)
- **COMMUNICATION TYPE** in **COMMUNICATION** in **SERVICE** menu: **OFF**  
(📖*Operating Guide* → *OPTION menu*)
- **STACK LOCK** in **SECURITY** menu: **OFF**

If **STACK LOCK** is set on, any menu related to *Instant Stack* cannot be operated. So, it is required to set to off for installation and setting on menu.

(1) Using the ▲/▼/◀/▶ buttons, go down the menu tree as below;

**ADVANCED MENU** > **SECURITY**  
> **STACK LOCK**

**STACK LOCK** dialog will appear on screen. (📖*Operating Guide* → *SECURITY menu*)



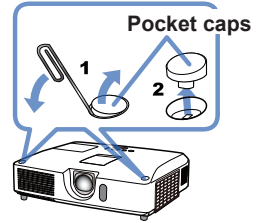
(2) Use the ▲/▼ buttons to point at **OFF**, and press the ▶ button to complete the setting.

## 2.2 Installation of the first projector (Set A)

### Removing pocket caps

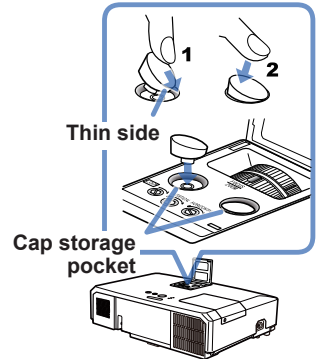
When you pile up two projectors, remove pocket caps on **Set A**.

**⚠ CAUTION** ► It is recommended to use a pin or something similar to remove the caps. If you use your finger, be careful not to injure your nail and finger.



**NOTE** • Cap storage pockets for the pocket caps are provided inside of the lens adjuster door. Be sure to keep the caps in the storage pockets, when taking the caps from the stack pockets.

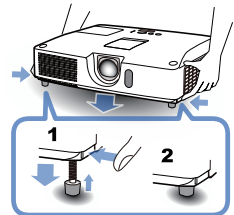
To store the cap to the pocket, put thin side of the cap to the pocket first, and then firmly push down the other side of the cap to the bottom end of the pocket. Be aware that keeping the caps solidly is extremely important to prevent children and pets from swallowing the caps.



### Preparing of elevator feet

When you pile up two projectors, set the elevator feet length minimum with using the elevator buttons on **Set A** and **B**.

**⚠ CAUTION** ► Be careful that when you pile up two projectors, a projector set over the other may slide down.



### Deciding installation position

Decide the position of **Set A** and its projection angle. ([User's Manual \(concise\)](#) → [Arrangement](#) and [Adjusting the projector's elevator](#).)

**NOTE** • The angle of gradient of **Set A** to the horizontal line should be within 12 degrees.

- Keep in mind the followings when you consider the installation position.
  - **VERTICAL** adjuster should be set to upper limit position.
  - **ZOOM** ring should not be set to fully wide position.
  - **HORIZONTAL** adjuster is recommended to be set around center position.



## Setting up Set A

1. Turn on **Set A**.
2. Set the lens position to upper limit with **VERTICAL** adjuster.

**NOTE** • If it is not set to upper limit, the image of **Set B** may not be able to fully overlap to the image of **Set A**.

- If necessary, set **MIRROR** first, since the setting change may shift the image position. ([📖Operating Guide](#) → **SETUP menu**)
- **HORIZONTAL** adjuster is recommended to be set around center position.

3. Adjust the image of **Set A** to match your screen with using **VERTICAL** adjuster, **HORIZONTAL** adjuster, **Zoom** ring and **FOCUS** ring. ([📖User's Manual \(concise\)](#) → **Displaying the picture**)  
If necessary, also use **KEYSTONE** and **PERFECT FIT** to set the image position. ([📖Operating Guide](#) → **EASY MENU** or **SETUP menu**).

**NOTE** • **Zoom** ring should not be set to fully wide position, otherwise the image of **Set B** may not be able to fully overlap to the image of **Set A**. Be aware that the image size of **Set B** must be set a little wider than the one of **Set A** using **Zoom** ring, since electrical fine tuning of image position of **Set B** never widen the image size of **Set B**.

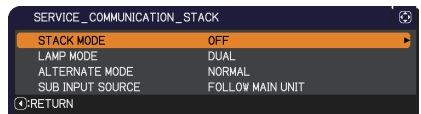
- When you use **PERFECT FIT**, **KEYSTONE** cannot be operated. If you require to adjust the image with **KEYSTONE** and **PERFECT FIT**, adjust it with **KEYSTONE** first.
- If you use **Simple Stack**, go to *Installation of the second projector (Set B)*. ([📖11](#))

4. Display a menu with **MENU** button. ([📖Operating Guide](#) → **Using the menu function**)
5. Using the **▲/▼/◀/▶** buttons, go down the menu tree as below.

**ADVANCED MENU** > **OPTION**  
> **SERVICE** > **COMMUNICATION**  
> **STACK**

**STACK** menu will appear on screen.  
([📖Operating Guide](#) → **OPTION menu**).

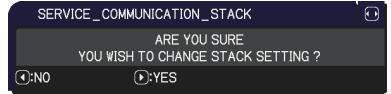
(continued on next page)



6. Use the ▲/▼ buttons to point at **STACK MODE**, and press the ► button to display **STACK MODE** dialog.  
Point at **SUB** pressing the ▲/▼ buttons, and press the ► button.



7. After pressing the ► button, a dialog to confirm whether or not the setting is saved is displayed.  
Press the ► button to complete the setting. (📖23)



8. Disable the remote control by **KEY LOCK** if you use **Intellectual Stack**.  
(📖Operating Guide → **OPTION menu**)

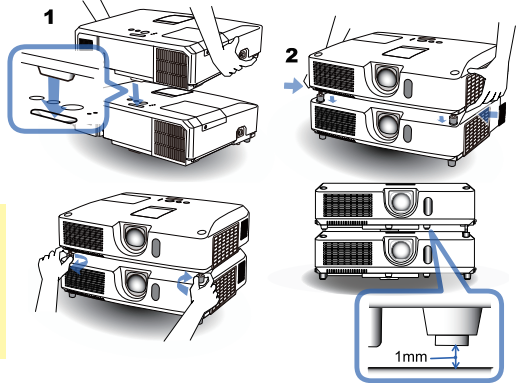
**NOTE** • During the installation, **Set A** will not be operated by the remote control after that. So, it is recommended to disable the remote control by **KEY LOCK**, to avoid the operation by the remote control to being mixed up.

- After **STACK MODE** setting is completed, **Set A (Sub)** cannot receive the remote control signal. When you set **STACK MODE** to **OFF**, enable the remote control by **KEY LOCK** if necessary.

## 2.3 Installation of the second projector (Set B)

### Piling up projectors

1. Put **Set B** onto **Set A**, if you want to pile up two projectors. Make sure that the heel on the bottom of **Set B** is right into the heel pocket on the top of **Set A**.
2. Keeping **Set B** on **Set A**, without holding **Set B** up, push the elevator buttons of **Set B** to draw the elevator feet. Make sure that the feet are reached to the bottom of the stack pockets on **Set A**.



**CAUTION** ► Be careful that when you pile up two projectors, a projector set over the other may slide down.

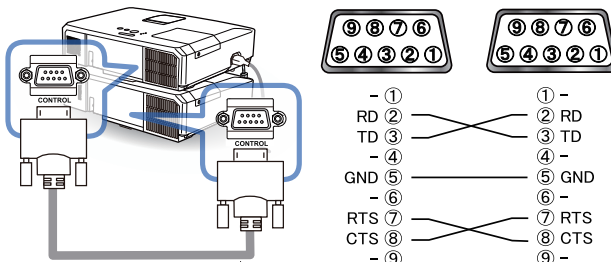
3. Make the feet of **Set B** rotate two revolutions counterclockwise to keep about 1 mm space between a protrusion at the bottom of **Set B** and the top case of **Set A** as shown in the right.

**NOTE** • Keeping **Set B** slightly away from **Set A** except the heel part is required to avoid sympathetic vibration with the two projectors caused by sound out from built-in speakers.

- Be careful that if **Set B** is tilted more, the image of **Set B** may not be able to be superimposed to the image of **Set A**.
- If you have already used the elevator feet of **Set A**, make sure that the angle to the horizontal line of both sets should be within 12 degrees.

### Connecting projectors

If you wish to use **Intellectual Stack**, connect each **CONTROL** port on **Set A** and **Set B** with an RS-232C cross cable.



## Setting up Set B

### 1. Turn on Set B.



**NOTE** • After turning on Set B, make sure that the image of Set B is not remarkably inclined compared with the image of Set A. If it is inclined too much, rotate the elevator feet of Set B to adjust the angle roughly. Check again that there is about 1 mm space between a protrusion at the bottom of Set B and the top case of Set A.

### 2. Reset the adjustment by KEYSTONE and PERFECT FIT on Set B. ( Operating Guide → EASY MENU or SETUP menu)

**NOTE** • When you use PERFECT FIT, KEYSTONE cannot be operated. If it is required to reset both functions, reset PERFECT FIT function first.

### 3. Adjust image size and position of Set B with ZOOM ring, VERTICAL adjuster, HORIZONTAL adjuster and FOCUS ring to fully overlap the image of Set A.

**NOTE** • Fine adjustment of image size and position later by electrical function, such as KEYSTONE and PERFECT FIT, cannot widen the image size, so it is important to fully overlap the image of Set A by optical adjustment.

- If you try to operate Set B with the remote control, Set A may react as well. It is recommended to operate Set B with the control panel on Set B.
- If you install two projectors side by side, also adjust image size and position of Set B to fully overlap the image of Set A.
- If you use Simple Stack, it is recommended to disable the remote control on Set B by KEY LOCK and operate it by the control panel, or to operate it by a wired remote control, since Set A will react to the remote control.  
( Operating Guide → OPTION menu)
- If you use Simple Stack, go to For Simple Stack users. ( 16)

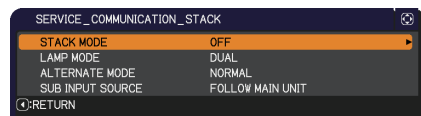
### 4. Display a menu with MENU button. ( Operating Guide → Using the menu function)

### 5. Using the ▲/▼/◀/▶ buttons, go down the menu tree as below.

ADVANCED MENU > OPTION  
> SERVICE > COMMUNICATION  
> STACK

STACK menu will appear on screen.

( Operating Guide → OPTION menu).



(continued on next page)

*Installation of the second projector (Set B) - Setting up Set B (continued)*

6. Use the ▲/▼ buttons to point at **STACK MODE**, and press the ► button to display **STACK MODE** dialog.



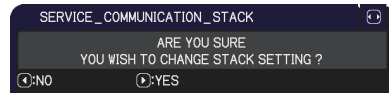
Point at **MAIN** with the ▲/▼ buttons, and press the ◀ button to return to the previous menu.

7. Use the ▲/▼ buttons to point at **LAMP MODE**, and press the ► button to display **LAMP MODE** dialog.



Point at **DUAL** with the ▲/▼ buttons, and press the ► button.

8. After pressing the ► button above, a dialog to confirm whether or not the setting is saved is displayed. Press the ► button to complete the setting.  
([📖](#)23)



## 2.4 Confirmation of Main & Sub setting

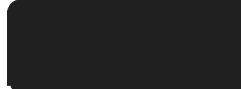
1. Press **MENU** button on the remote control to **Main (Set B)**.

**NOTE** • In use of **Intellectual Stack**, the remote control signal can be received by the **Main** only, and the **Sub** ignores the remote control signal.

2. The **MENU** dialogs appear on the lower right of screen.



**Main (Set B)**



**Sub (Set A)**

3. If you press the ► button, the dialog is closed and a menu on **Main (Set B)** will appear when **MAIN** is pointed at.  
If you press the ◀ button, the dialog is closed and a menu will disappear.

**NOTE** • If these dialogs are not displayed on screen, check RS-232C cable connection (11) and **Main/Sub** setting on **STACK MODE** dialog. (18)

## 2.5 Fine adjustment of image position

To superimpose the image of **Main (Set B)** to the one of **Sub (Set A)**, the image size and position of **Main (Set B)** is finely adjusted with **PERFECT FIT**.

### For Intellectual Stack users

1. Press **MENU** button on the remote control or control panel on **Main (Set B)** to display **MENU** dialog. Point at **MAIN** with the **▲/▼/◀/▶** buttons, and press the **▶** button.



Then, a menu on **Main (Set B)** will appear.

2. Using the **▲/▼/◀/▶** buttons on the remote control or **Main (Set B)** control panel, select **PERFECT FIT** that is existed in **EASY MENU** and **OPTION** menu of **ADVANCED MENU**. ([Operating Guide](#) → **EASY MENU** or **OPTION menu**)

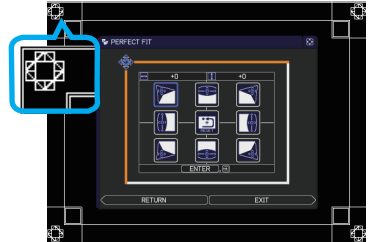


Image from **Main (Set B)**

The image especially arranged for **Intellectual Stack** appears on screen. It consists of one **TEMPLATE** screen with the **PERFECT FIT** dialog from **Main (Set B)** and another **TEMPLATE** screen from **Sub (Set A)**.

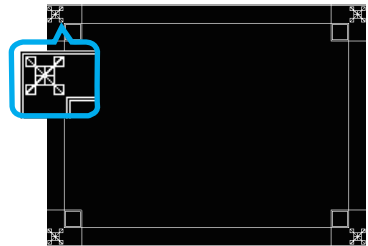


Image from **Sub (Set A)**

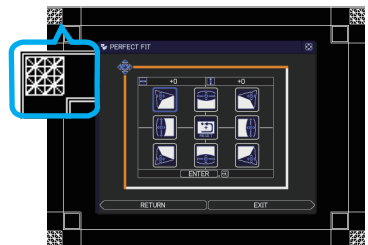
3. Using **PERFECT FIT** on **Main (Set B)**, adjust the image size and position of **Main (Set B)** to fully superimpose to the image of **Sub (Set A)**. ([Operating Guide](#) → **EASY MENU** or **OPTION menu**)

It is recommended to adjust it by the following way.

- (1) Adjust four corners roughly in turn as below.

Top left → Top right  
→ Bottom right → Bottom left.

- (2) Adjust four corners finely in turn as same as above.



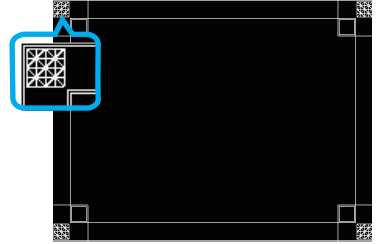
Superimposed image

**NOTE** • Refer to [NOTE for all users](#). ([Operating Guide](#) 16)

## For Simple Stack users

1. Press **MENU** button on the remote control to open a menu on **Set A**.

2. Use the **▲/▼/◀/▶** buttons to open **TEMPLATE** dialog, then select **STACK** on the dialog. ([Operating Guide](#) → **SCREEN menu**)

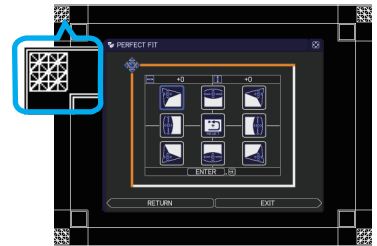


**STACK of TEMPLATE**

3. Press **MENU** button on the control panel of **Set B** to open a menu.

4. Use the **▲/▼/◀/▶** buttons to select **PERFECT FIT** that is existed in **EASY MENU** and **OPTION** menu of **ADVANCED MENU**. ([Operating Guide](#) → **EASY MENU** or **OPTION menu**).

**PERFECT FIT** dialog appears on screen.



**PERFECT FIT dialog on STACK of TEMPLATE**

5. Using **PERFECT FIT** on **Set B**, adjust the image size and position of **Set B** to fully superimpose to the image of **Set A**.

It is recommended to adjust it by the following way.

(1) Adjust four corners roughly in turn as below.

Top left → Top right → Bottom right → Bottom left.

(2) Adjust four corners finely in turn as same as above.

**NOTE for all users** • Refer to **PERFECT FIT** of **EASY MENU** or **OPTION menu** in the [Operating Guide](#) for the detail of **PERFECT FIT**.

- Even if you place two projectors side by side (**Style 2**), adjust the image position of one projector to the other's with the same way as explained above.

- It is strongly recommended to use a flat screen. If you use a curved or distorted screen, it is very difficult to adjust two images to be superimposed, even if you use pin/barrel adjustment on **PERFECT FIT**.

- Even though you try to finely adjust the images from two projectors, it may not be possible to superimpose the images depending on input signals. In this case, try to resolve it with the following measures.

- Press **AUTO** button of the remote control or execute **AUTO ADJUST EXECUTE** ([Operating Guide](#) → **IMAGE menu**) on each of the projectors.
- Adjust **H POSITION** and **V POSITION** ([Operating Guide](#) → **IMAGE menu**) on each of the projectors.
- Check **RESOLUTION** setting on **INPUT** menu, and if it is different between the two projectors, change the setting to the same. ([Operating Guide](#) → **INPUT menu**)



### 3. Setting on STACK menu

Using **STACK** menu, set the **Intellectual Stack** operation.

- NOTE** • If you use **Simple Stack** without RS-232C cable connection, skip this chapter.
- If you do not need to change the setting that is set during the installation explained prior to this chapter, jump to **3.3 Selecting lamp working mode**. (📖19)
  - Read carefully **3.7 Important information for Intellectual Stack**. (📖24)

#### 3.1 Displaying STACK menu

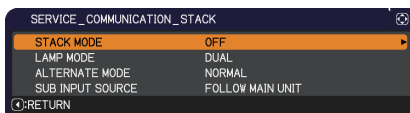
Using the ▲/▼/◀/▶ buttons, go down the menu tree as below.

**ADVANCED MENU > OPTION**

**> SERVICE > COMMUNICATION > STACK**

**STACK** menu will appear on screen.

(📖Operating Guide → **OPTION menu**). The setting for **Intellectual Stack** operation is started from the menu.



- NOTE** • The following setting must be confirmed on both of projectors. Otherwise, **STACK** menu on the projectors cannot be operated. (📖7)
- **STANDBY MODE** in **SETUP** menu: **NORMAL**  
(📖Operating Guide → **SETUP menu**)
  - **COMMUNICATION TYPE** in **COMMUNICATION** in **SERVICE** menu: **OFF**  
(📖Operating Guide → **OPTION menu**)
  - **STACK LOCK** in **SECURITY** menu: **OFF** (📖7)

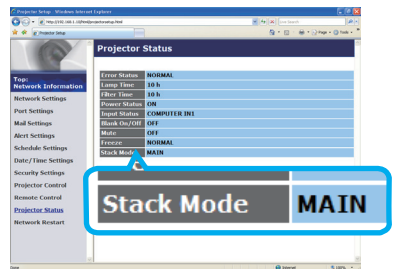
### 3.2 Selecting Main, Sub or off

If you wish to turn on **Intellectual Stack**, select either **MAIN** or **SUB**. When a projector is set to **MAIN** and the other is set to **SUB** in **STACK MODE** dialog, **Intellectual Stack** is started. If you wish to turn off **Intellectual Stack**, select **OFF**.

1. Point at **STACK MODE** with the ▲/▼ buttons in **STACK** menu, then press the ► button to display **STACK MODE** dialog.
2. Use the ▲/▼ buttons in the dialog to point at **MAIN**, **SUB** or **OFF**.  
**OFF** : for disabling **Intellectual Stack**  
**MAIN** : for assigning the projector to **Main** that is works as a control tower.  
**SUB** : for assigning the projector to **Sub** that works as a follower.
3. Press the ◀ button to turn back to previous menu, or the ► button to complete the setting. (📖23)



**NOTE** • After setting **Main** or **Sub**, the setting information can be monitored on Web Control. (📖*Network Guide* → *Web Control*) Select **Projector Status** on the main menu of web control. **Stack Mode** item shows whether your projector is set to **Main** or **Sub**, even though **STACK MODE** is set to **OFF**.



### 3.3 Selecting lamp working mode

Select one of lamp working mode, **DUAL** use or **ALTERNATE** use.

1. Point at **LAMP MODE** with the ▲/▼ buttons in **STACK** menu, then press the ► button to display **LAMP MODE** dialog.
2. Use the ▲/▼ buttons in the dialog to point at **DUAL** or **ALTERNATE**.  
**DUAL** : for turning on the projectors at the same time.  
**ALTERNATE** : for turning on the projectors alternately.
3. Press the ◀ button to turn back to previous menu, or the ► button to complete the setting. (📖23)

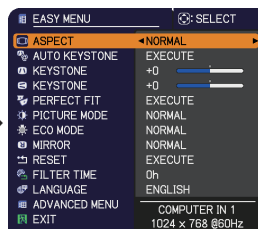


**NOTE** • If **DUAL** is selected for the **LAMP MODE**, a menu to select **MAIN** or **SUB** may be displayed on screen first when a button on the control panel of the projector or remote control is pressed. If displayed, select one of them which you want to operate. Refer to some example below.

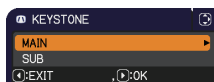
- When **MENU** button is pressed, a menu to select **MAIN** or **SUB** is displayed. Then, if **MAIN** is selected, a menu either **EASU MENU** or **ADVANCED MENU** on **Main** projector is displayed.
- When **KEYSTONE** button is pressed, a menu to select **MAIN** or **SUB** is displayed. Then, if **MAIN** is selected, the **KEYSTONE** menu on **Main** projector is displayed.
- When **DUAL** is selected for **LAMP MODE**, operating restrictions are as follows.
- **AUTO POWER OFF** and **FREEZE** functions on both projectors is disabled.
- The test patterns arranged for **CUSTOM** of **GAMMA** and **COLOR TEMP** are not displayed.
- It takes a little longer than on the other mode to turn on the projectors, which is not malfunction.



A menu to select **MAIN** or **SUB**



A menu on **Main**



A menu to select **MAIN** or **SUB**



A menu on **Main**


(continued on next page)

**NOTE** • When **DUAL** is selected for **LAMP MODE**, the following settings are recommended because **Main** and **Sub** projectors may display different images on screen.

- Set the same image on **TEMPLATE** and **START UP** functions on **Main** and **Sub** projectors.
- Capture the same image on **MyScreen** on **Main** and **Sub** projectors.
- Save the same image on **MY IMAGE** on **Main** and **Sub** projectors.
- Set the same content of message for **Messenger** function ([📖Network Guide](#) → [Messenger Function](#)) on **Main** and **Sub** projectors.
- When **DUAL** is selected for **LAMP MODE**, the image shift causes degradation of image quality on screen. Set **MIRROR** setting in advance of image position adjustment. When **MIRROR** setting ([📖Operating Guide](#) → [SETUP menu](#)) is changed, the image position is shifted.
- When **ALTERNATE** is selected, if an error is occurred and the lamp is turned off on a working projector, the other automatically starts to work. In a case an RS-232C cable is disconnected or AC power is not supplied, the other will not work.
- Even when **ALTERNATE** is selected, if one or both of **PIN LOCK** and **TRANSITION DETECTOR** are set to **ON** ([📖Operating Guide](#) → [SECURITY menu](#)), the both projectors will turn on. Then, after inputting security code for each one, one of projector will turn off.
- In the **Intellectual Stack** use, **POWER** indicator on the control panel of projector operates in different way from normal use. ([📖Operating Guide](#) → [Troubleshooting](#)) When **Main** and **Sub** projectors are in standby mode, if **STANDBY/ON** button on the remote control or control panel of **Main** projector is pressed, **Main** projector will decide projectors to turn on in accordance with **STACK MODE** setting.
- While **Main** projector is selecting projectors to turn on, **POWER** indicator on **Main** projector is blinking in green.
- If **Main** projector is required to turn on, **POWER** indicator on **Main** projector turns to steady green after the lamp is on, as same as usual.
- If only **Sub** projector is required to turn on, **POWER** indicator on **Main** projector turns to steady orange after **Sub** projector turns on.
- If an error is occurred on **Main** projector, **Sub** projector turns on and **POWER** indicator on **Main** projector is lighting or blinking in red.


### 3.4 Selecting lamp switching mode

The setting is required only when **ALTERNATE** is selected at **LAMP MODE** dialog.

(19) Select one of lamp switching mode, **AUTO** or **NORMAL**, in the **ALTERNATE** use.

1. Point at **ALTERNATE MODE** with the ▲/▼ buttons in **STACK** menu, then press the ► button to display **ALTERNATE MODE** dialog.



2. Use the ▲/▼ buttons in the dialog to point at **AUTO** or **NORMAL**.  
**AUTO** : for turning on one projector that has the lamp which usage time is shorter than the other's one.  
**NORMAL** : for turning on one projector that was not used last time.
3. Press the ◀ button to turn back to previous menu, or the ► button to complete the setting. (23)

**NOTE** • **ALTERNATE MODE** dialog can be operated on **Main** projector, when **ALTERNATE** is selected on **LAMP MODE** dialog.

- To maintain quality and reliability of two projectors, it sometimes happens to turn on a projector that has a lamp being used longer time than the one of the other projector even if **AUTO** is selected.

### 3.5 Selecting input source to Sub

1. Point at **SUB INPUT SOURCE** with the ▲/▼ buttons in **STACK** menu, then press the ► button to display **SUB INPUT SOURCE** dialog.
2. Use the ▲/▼ buttons in the dialog to point at **FOLLOW MAIN UNIT** or **FIXED (COMPUTER IN 1)**.  
**FOLLOW MAIN UNIT** : for setting the input source on **Sub** projector as same as the one on **Main** projector.  
**FIXED (COMPUTER IN 1)** : for setting the input source on **Sub** projector to **COMPUTER IN1** port which is connected to **MONITOR OUT** port on **Main** projector.
3. Press the ◀ button to turn back to previous menu, or the ► button to complete the setting. (📖23)



**NOTE** • If **FIXED (COMPUTER IN 1)** is selected, either **COMPUTER IN 1** or **IN 2** port can be selected as an input source on **Main** projector. When **COMPUTER** or **VIDEO** button on the remote control or **INPUT** button on the projector is pressed, **MAIN INPUT SOURCE** dialog will be displayed on screen. Select **COMPUTER IN 1** or **IN 2** with the ▲/▼ buttons.

- If **FIXED (COMPUTER IN 1)** is selected, **COMPUTER IN1** port on **Sub** projector should be connected to **MONITOR OUT** port on **Main** projector with a computer cable. The image that is input from the selected port is output from **MONITOR OUT** port on **Main** projector and input to **COMPUTER IN1** port on **Sub** projector. The setting for **MONITOR OUT** on **Main** projector is invalid when **FIXED (COMPUTER IN 1)** is selected. (📖Operating Guide → **SETUP menu**)

- If **FIXED (COMPUTER IN 1)** is selected, video signals can be input to **COMPUTER IN1** and **IN 2** ports on **Main** projector. Set the port which a video signal is input to with **COMPUTER IN**, and set the video format on **VIDEO FORMAT**. Refer to *Inputting image to Sub from Main* (📖28) and *Inputting image to Sub from Main - Video signal (either COMPONENT or VIDEO)* (📖32)

### 3.6 Exiting STACK menu

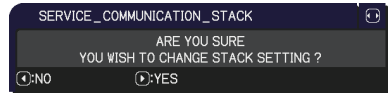
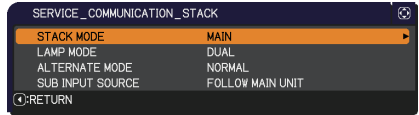
Before exiting from menu operation for [Intellectual Stack](#), checking all the setting on [STACK](#) menu is recommended. In a dialog from the [STACK](#) menu, press the ◀ button to return to the [STACK](#) menu.

Refer to the following to exit from menu operation for [Intellectual Stack](#).

#### In the STACK menu

When you press the ◀ button (as [RETURN](#)) with any setting change, the confirmation dialog will appear.

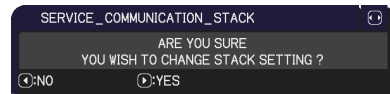
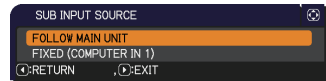
- Pressing the ▶ button (as [YES](#)) in the dialog saves the setting, and closes the dialog. The screen is turned to black while the setting is activating, so wait for a while.
- Pressing the ◀ button (as [NO](#)) in the dialog returns to the [COMMUNICATION](#) menu without saving the setting. ([📖 Operating Guide](#) → [OPTION menu](#) → [SERVICE](#))



#### In a dialog from the STACK menu

When you press the ▶ button (as [EXIT](#)) with any setting change, the confirmation dialog will appear.

- Pressing the ▶ button (as [YES](#)) in the dialog saves the setting, and closes the dialog. The screen is turned to black while the setting is activating, so wait for a while.
- Pressing the ◀ button (as [NO](#)) in the dialog closes the dialog without saving the setting.



### 3.7 Important information for Intellectual Stack

This section does not explain the menu operation, but gives you some important information for setting **Main/Sub** projectors. Read all carefully.

- If you use **Intellectual Stack**, one projector must be set to **Main** and the other to **Sub**.
- If you pile up two projectors, the control panel of the projector laid underneath cannot be operated, so that it is strongly recommended to set the projector laid underneath to **Sub** and the other to **Main**.
- Any keys except **STANDBY/ON** button on the control panel of **Sub** projector are disabled. Operate the projectors with the control panel of **Main** projector or the remote control.
- Even if pressing **STANDBY/ON** button of **Sub** projector, it is not possible to turn off **Sub** projector only. If you press the button for more than 3 seconds, **Main** and **Sub** projectors are turned off. Even if you press the button, you can turn on neither **Main** nor **Sub** projector.
- **Main** projector can receive the signal from the remote control but **Sub** projector cannot, so the remote control should be pointed at **Main** projector.
- If you use a wired remote control, connect the plug to **Main** projector, not to **Sub**.
- If you use a simple PC mouse function, connect both of **Main** and **Sub** projectors to your computer with USB cables.
- **AUTO SEARCH** function is disabled while the projector is used in **Intellectual stack**.
- **Sub** projector cannot be turned on through network communication to **Sub** and by Web control on **Sub**. **Sub** projector should be controlled though **Main** projector.
- **Remote Control** function on Web Control of **Sub** projector is disabled.  
([📘Network Guide](#) → [3.11 Remote Control](#))
- If the projectors are tried to turn on with using **Power on & Display on** feature on **Messenger** function, the projectors will exit from **Intellectual stack** and display the message accordingly. If you wish to start **Intellectual stack** again, select **MAIN/SUB** again on both projectors in **STACK MODE** dialog, or turn off and on again for both projectors.
- **Main** and **Sub** projectors have common setting for the following.
  - Muting feature ([📘Operating Guide](#) → [Temporarily muting the sound](#))
  - Magnifying feature ([📘Operating Guide](#) → [Using the magnify feature](#))
  - **ASPECT** and **OVER SCAN** ([📘Operating Guide](#) → [IMAGE menu](#))
  - **COMPUTER IN** ([📘Operating Guide](#) → [INPUT menu](#))
  - **MESSEAGE** ([📘Operating Guide](#) → [SCREEN menu](#))
  - **MY BUTTON** ([📘Operating Guide](#) → [OPTION menu](#))
  - **TEMPLATE** ([📘Operating Guide](#) → [SCREEN menu](#))

(continued on next page)



Important information for Intellectual Stack (continued)

- The following functions are disabled.
  - Executing of **AUTO KEYSTONE** ([Operating Guide](#) → **SETUP menu**)
  - **STANDBY MODE** ([Operating Guide](#) → **SETUP menu**)
  - **AUTO SEARCH** ([Operating Guide](#) → **OPTION menu**)
  - Turning on/off **AUTO KEYSTONE** ([Operating Guide](#) → **OPTION menu**)
  - **DIRECT POWER ON** ([Operating Guide](#) → **OPTION menu**)
  - **MY SOURCE** ([Operating Guide](#) → **OPTION menu**)
  - **COMMUNICATION TYPE** ([Operating Guide](#) → **OPTION menu** → **SERVICE** → **COMMUNICATION**)
- The input source from the following ports cannot be selected.
  - **USB TYPE A, USB TYPE B, LAN**
- An error message will be displayed if an error is occurred on projectors while operating on **Intellectual stack**.

When an error is occurred, a full dialog will be displayed on screen. After around 20 seconds without any key input, the full dialog will be turned to a small dialog. When a small dialog is displayed, pressing the ◀ button displays a full dialog again.

A number on projector icon means that “1” indicates **Main** projector and “2” does **Sub**.

Refer to a message on screen as shown below and take a necessary action to solve the problem.

**Example:**

**Cover Error:** Lamp cover is opened.

**Lamp Error:** Lamp does not light up.

**Fan Error:** Cooling fan has a problem.

**Temp Error:** Temperature in projector is too high.

**Air Flow Error:** Check exhaust vent that may be blocked, since temperature in projectore is too high.

**Filter Error:** Filter timer counts hours more than the setting hours on Filter Message menu.  
([Operating Guide](#) → **OPTION menu** → **SERVICE**)

**Cold Error:** Air temperature around projector is too low.




Full dialog



Small dialog



### Important information for Intellectual Stack (continued)

- If it is necessary to turn off one of projectors for error handling or anything else, turn off both projectors to start **Intellectual Stack** correctly when turning on.
- If **PIN LOCK** or **TRANSITION DETECTOR** of security function on both projectors are set to **ON**, the both projectors will turn on once. Input security code for **Main** first and **Sub** next. If **ALTERNATE** mode is selected, one of the projectors will be turned off automatically. ( **Operating Guide** → **SECURITY menu**)
- If **SECURITY** function on one of projectors are set to on, it is required to input security code as below, when turning on.
  - In **DUAL** mode, both projectors will turn on. Input the security code for the projector that is locked by the **SECURITY** function.
  - In **ALTERNATE** mode, if a projector locked by the **SECURITY** function is due to turn on by **ALTERNATE** mode setting only the projector will turn on, and if not both projectors will turn on. Input the security cord for the projector locked by **SECURITY** function. After the security lock is released, if two projectors turned on, one of the projectors will turn off.

## 4. Connecting cables

To superimpose two images to one screen, the same image is required to input to **Main** and **Sub** projectors. There are some options to input image to the projectors. This chapter shows you such option for connection of cables. Read this chapter to find one that matches to your demand.

**NOTE** • If you use **Simple Stack** without an RS-232C connection, **Main** and **Sub** projectors mentioned below do not exist. So, be aware that **Main** read as a projector and **Sub** does as the other in this chapter.

• For detail of input port, specs, connections and so on, refer to **Connecting with your devices** (← [Operating Guide](#)) and Connection to the ports (← [Operating Guide - Technical](#))

### 4.1 Connecting RS-232C cable

If you use **Intellectual Stack**, connect RS-232C port on **Main** and **Sub** projectors with an RS-232C cross cable. ([11](#)) If you use **Simple stack**, it is not required.

**NOTE** • If the cable that connects two projectors working in **Intellectual Stack** is disconnected, the projectors exit from **Intellectual Stack** and start to work individually. Even if the cable is just connected again, **Intellectual Stack** will not restart. Go through the following procedure to restart **Intellectual Stack**.

- (1) Leave the both projectors unattended for 10 seconds or more after the cable is disconnected, to let projectors recognize that.
- (2) Turn off the both projectors, and allow them to cool sufficiently.
- (3) Reconnect the two projectors with the RS-232C cable, and turn them on again. Then **Intellectual Stack** will restart.

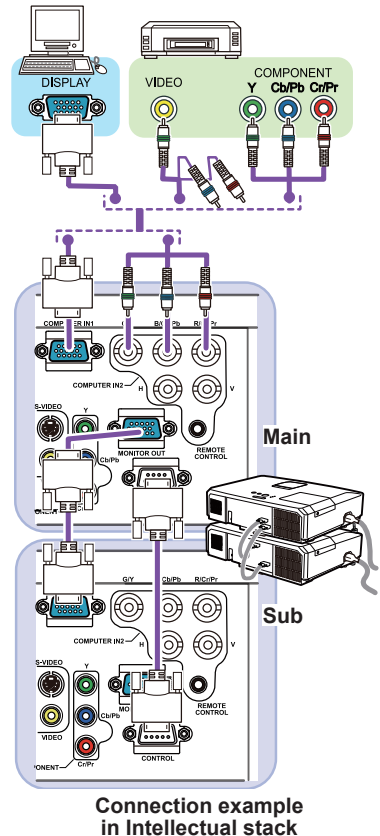
## 4.2 Connecting signal cables

There are two options to input image to **Sub** projector. (22, 23)

- Inputting image to **Sub** from the **MONITOR OUT** port on **Main**.
- Inputting image to **Sub** and **Main** individually.

### Inputting image to Sub from Main

1. Connect the **MONITOR OUT** port on **Main** to **COMPUTER IN1** port on **Sub** with a computer cable.
2. Connect your image device to one of input port on **Main**.



**NOTE for Intellectual Stack** • As an input port on **Main** projector in **Intellectual Stack**, **COMPUTER IN1** and **IN2** are available. Do not use other ports for image input.

- If you wish to input a component signal, input it to **COMPUTER IN1** and **IN2**.
- If you wish to input a video signal, input it to **Y** pin of component signal on **COMPUTER IN1** and **IN2**.

**NOTE for Simple Stack** • As an input port on the projector that is connected a computer cable to the ports **MONITOR OUT**, **COMPUTER IN1** and **IN2** that can be output from **MONITOR OUT** port are available. (Operating Guide → **SETUP menu**) If you wish to use other input port, input the image to **Sub** and **Main** individually.

### Inputting image to Sub and Main individually

1. Split output signal from your image device to two with a signal splitter or something similar.
2. Connect your image device to the same input port on **Main** and **Sub** projectors.

**NOTE for Intellectual Stack** • As an input port on **Main** projector in **Intellectual Stack**, **LAN**, **USB TYPE A** and **USB TYPE B** cannot be used.

**NOTE for Simple Stack** • As an input port on the projectors, any input ports which signal can be split to two are available.

## 5. Setting for input port on menu

### 5.1 Preparing menu operation

If you use [Simple Stack](#) without RS-232C cable connection, select the input port that you connect the cables to, pressing **COMPUTER** or **VIDEO** button on the remote control or **INPUT** button on the control panel on both projectors. For setting of the **MONITOR OUT**, refer to **SETUP** menu in the [Operating Guide](#). Then, the setting is finished.

If you use [Intellectual Stack](#) with RS-232C cable connection, the setting or changing anything related to menu operation for [Intellectual Stack](#) requires to be done on **Main** projector. So **Main** projector should be working for input source setting on [Intellectual Stack](#).

### 5.2 Checking Main projector's operating status

On [Intellectual Stack](#), setting or changing related to menu operation requires to be done on **Main** projector. Before starting menu operation for [Intellectual Stack](#), check whether or not **Main** projector is working as below.

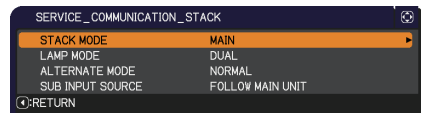
1. Press **MENU** button on the remote control.
2. If **MENU** dialog as right appears on screen, it is confirmed that the two projectors are working in **DUAL** mode and **Main** projector is surely working.  
Go to [5.4 Setting on menu](#). (📖31)



If the dialog does not appear, **LAMP MODE** is set to **ALTERNATE** and either **Main** or **Sub** projector is working. Go to next.

3. Using the **▲/▼/◀/▶** buttons, go down the menu tree as below.

**ADVANCED MENU > OPTION**  
**> SERVICE > COMMUNICATION**  
**> STACK**



**STACK** menu will appear on screen.

(📖Operating Guide → **OPTION menu**).

4. Check **STACK MODE** setting in **STACK** menu.
  - If **MAIN** is shown, it is confirmed that **Main** projector is working. Go to [5.4 Setting on menu](#). (📖31)
  - If **SUB** is shown, it is confirmed that **Main** projector is turned off and **Sub** is working. Go to [5.3 Starting Main projector](#). (📖30)

## 5.3 Starting Main projector

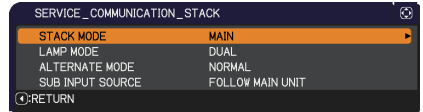
After performing *Checking Main projector's operating status* section, it is confirmed that the two projectors are set to **ALTERNATE MODE** and **Sub** projector is working at the moment. Since the setting for **Intellectual Stack** can be changed while **Main** projector is working, this section shows you how you can switch from **Sub** projector to **Main**.

1. Using the ▲/▼/◀/▶ buttons, go down the menu tree as below.

ADVANCED MENU > OPTION  
> SERVICE > COMMUNICATION > STACK

STACK menu will appear on screen.

([Operating Guide](#) → *OPTION menu*)



2. Check **ALTERNATE MODE** setting in the menu.

If **NORMAL** is shown, two projectors are powered on in turn. So, if the stacked projectors are restarted, **Main** projector will turn on.

- (1) Press **STANDBY/ON** button on the remote control or control panel of **Main** projector, and then **Sub** projector will turn off.
- (2) After cooling down of the projector turn on again with pressing **STANDBY/ON** button. **Main** projector will turn on this time.

If **AUTO** is shown, one of projector having a lamp that is shorter usage time is powered on. So, even though the stacked projectors are restarted, **Main** projector may not turn on. Take the following process to turn on **Main** projector.

- (1) Use the ▲/▼ button to point at **STACK MODE**, and press the ▶ button to display **STACK MODE** dialog.
- (2) Use the ▲/▼ button to point at **OFF**, and then press the ▶ button to complete the setting. ([23](#))
- (3) Display **STACK MODE** dialog again with the same process above.
- (4) Use the ▲/▼ button to point at **SUB**, and then press the ▶ button to complete the setting. ([23](#))
- (5) After exiting, wait for 10 seconds or more.
- (6) Press **STANDBY/ON** button on the remote control or control panel of **Main** projector, and then **Sub** projector will turn off.
- (7) After cooling down of the projector turn on again with pressing **STANDBY/ON** button. **Main** projector will surely turn on this time, even if **AUTO** is set on **LAMP MODE**.

3. Now, **Main** projector is working, so you can set or change the setting for **Intellectual Stack**. Proceed to *5.4 Setting on menu*. ([31](#))

**NOTE** • If **Main** projector cannot turn on with an error or something wrong on **Main**, **Sub** projector will turn on even if you take the procedure as mentioned above. Take necessary action for **Main** projector to recover first, and then change the setting for **Intellectual Stack**.

## 5.4 Setting on menu

If you use **Intellectual Stack** with RS-232C cable connection, follow the instruction as below. In the case of inputting image from **Main** to **Sub**, note that the operation is different if you use computer signal, or video signal such as **COMPONENT** and **VIDEO**.

### Inputting image to Sub from Main - Computer signal

1. If **STACK** menu is already on screen, proceed to **3** below. Otherwise press **MENU** button on the remote control.

If **MENU** dialog is displayed, use the **▲/▼** buttons to point at **MAIN**, and press the **▶** button. Then, a menu appears on screen.

If not, a menu directly appears on screen.

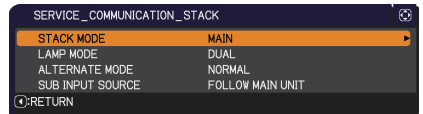


2. Using the **▲/▼/◀/▶** buttons, go down the menu tree as below.

**ADVANCED MENU > OPTION**  
**> SERVICE > COMMUNICATION > STACK**

**STACK** menu will appear on screen.

([Operating Guide](#) → **OPTION menu**)

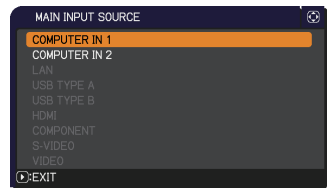


3. Use the **▲/▼** buttons to point at **SUB INPUT SOURCE**, and press the **▶** button to display **SUB INPUT SOURCE** dialog.



4. Use the **▲/▼** buttons to point at **FIXED (COMPUTER IN 1)**, and press the **▶** button to complete the setting. ([23](#))

5. Press **COMPUTER** or **VIDEO** button on the remote control or **INPUT** button on the control panel on **Main** projector, **MAIN INPUT SOURCE** dialog is displayed on screen. Use the **▲/▼** buttons to point at the source you connected a cable to, and press the **▶** button to complete the setting.



**NOTE** • When **FIXED (COMPUTER IN 1)** is selected, the **MONITOR OUT** setting is invalid. ([Operating Guide](#) → **SETUP menu**)

• When **FIXED (COMPUTER IN 1)** is selected, only **COMPUTER IN1** and **COMPUTER IN2** can be selected, and other input cannot.

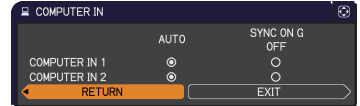
• When **FIXED (COMPUTER IN 1)** is selected, if any buttons related to input port setting, such as **COMPUTER**, **VIDEO**, **MY SOURCE/DOC.CAMERA** and **MY BUTTON** (if any function related to input source is assigned) buttons on the remote control, and **INPUT** button on the projector is pressed, the dialog to select input source is displayed.

## Inputting image to Sub from Main

### - Video signal (either **COMPONENT** or **VIDEO**)

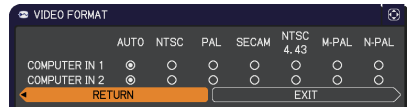
1. If **STACK** menu is already on screen, proceed to **3** below. Otherwise press **MENU** button on the remote control.  
If **MENU** dialog is displayed, use the **▲/▼** buttons to point at **MAIN**, and press the **▶** button. Then, a menu appears on screen.  
If not, a menu directly appears on screen.

2. Press **MENU** button on the remote control or control panel on **Main** projector. Then, using the **▲/▼/◀/▶** buttons, open **COMPUTER IN** dialog. ([Operating Guide](#) → **INPUT menu**)



3. If you input component signal on either **COMPUTER IN 1** or **IN 2** port, set **AUTO** at the port. Then, use the **▲/▼/◀/▶** buttons to point at **EXIT** and press the **▶** button to complete the setting.  
If you input video signal on either **COMPUTER IN 1** or **IN 2** port, set **VIDEO** at the port. If it is necessary to select a video format, use the **▲/▼/◀/▶** buttons to point at **RETURN** and press the **◀** button to display **INPUT** menu, otherwise use the **▲/▼/◀/▶** buttons to point at **EXIT** and press the **▶** button to complete the setting.

4. Select **VIDEO FORMAT** in **INPUT** menu to display **VIDEO FORMAT** dialog.  
Select **AUTO** or appropriate format for the port that you input video signal.



Then, use the **▲/▼/◀/▶** buttons to point at **EXIT** and press the **▶** button to complete the setting.

## Inputting image of Sub and Main individually

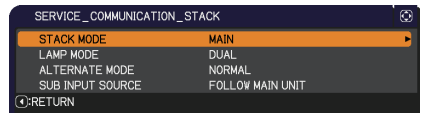
1. If **STACK** menu is already on screen, proceed to **3** below. Otherwise press **MENU** button on the remote control.  
If **MENU** dialog is displayed, use the **▲/▼** buttons to point at **MAIN**, and press the **▶** button. Then, a menu appears on screen.  
If not, a menu directly appears on screen.

2. Using the **▲/▼/◀/▶** buttons, go down the menu tree as below.

**ADVANCED MENU** > **OPTION**  
> **SERVICE** > **COMMUNICATION** > **STACK**

**STACK** menu will appear on screen.

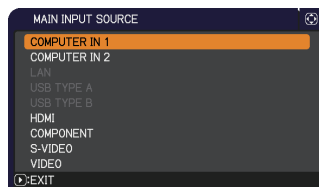
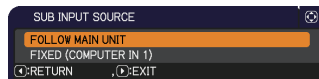
([Operating Guide](#) → **OPTION menu**)



(continued on next page)



3. Use the ▲/▼ buttons to point at **SUB INPUT SOURCE**, and press the ► button to display **SUB INPUT SOURCE** dialog.
4. Use the ▲/▼ buttons to point at **FOLLOW MAIN UNIT**, and press the ► button to complete the setting. (p.23)
5. Press **COMPUTER** or **VIDEO** button on the remote control or **INPUT** button on the control panel on **Main** projector, **MAIN INPUT SOURCE** dialog is displayed on screen. Use the ▲/▼ buttons to point at the source you connected a cable to, and press the ► button to complete the setting.



**NOTE** • When **FOLLOW MAIN UNIT** is selected, if you set input source on whichever **Main** or **Sub** projector, the same input port is automatically set on other projector.

- When **FOLLOW MAIN UNIT** is selected, **LAN**, **USB TYPE A** and **USB TYPE B** cannot be selected.
- When **FOLLOW MAIN UNIT** is selected, if any buttons related to input port setting, such as **COMPUTER**, **VIDEO**, **MY SOURCE/DOC.CAMERA** and **MY BUTTON** (if any function related to input source is assigned) buttons on the remote control, and **INPUT** button on the projector is pressed, the dialog to select input source is displayed.

## 6. Restriction on Schedule function

This model supports schedule function on [Web Control](#) feature. ([Network Guide](#) → [3. Web Control](#) → [3.7 Schedule Settings](#)) If you use [Intellectual Stack](#) with RS-232C cable connection, there are some restriction on the function. If you use [Simple Stack](#) without RS-232C cable connection, there is no restriction on the function.

Whichever you use [Intellectual Stack](#) or [Simple Stack](#), be careful about the schedule settings that you have set before you start to use them, which may cause unexpected change of setting while using them.

See the following for the restriction on [Intellectual Stack](#). When you use [Simple Stack](#), skip this chapter.

### Restriction on Main projector

Functions			LAMP MODE			
			DUAL	ALTERNATE		DUAL/ ALTERNATE
	Projector power	Main	ON	ON	OFF	OFF
		Sub	ON	OFF	ON	OFF
Power On			✓	✓	✓	✓
Power Off			✓	✓	✓	✓
Input port change			✓ *1)	✓ *1)	✓ *1)	✓ *1)
My Image			✓	✓	X *2)	X *2)
Messenger			✓	✓	X *2)	X *2)
Slide Show			X *3)	X *3)	X *3)	X *3)

### Restriction on Sub projector

Functions			LAMP MODE			
			DUAL	ALTERNATE		DUAL/ ALTERNATE
	Projector power	Main	ON	ON	OFF	OFF
		Sub	ON	OFF	ON	OFF
Power On			X *3	X *3	X *3	X *3
Power Off			✓	✓	✓	✓
Input port change			✓ *1)	✓ *1)	✓ *1)	✓ *1)
My Image			✓	X *2)	✓	X *2)
Messenger			✓	X *2)	✓	X *2)
Slide Show			X *3)	X *3)	X *3)	X *3)

✓ : The schedule can put into [Web Control](#) even if the projector is working in [Intellectual stack](#), and the schedule will be executed.

✓ \*1): The schedule setting can put into [Web Control](#) while the projector is working

(continued on next page)

### *Restriction on Schedule function (continued)*

in [Intellectual Stack](#). If input port is tried to change to any port that is allowed to use on [Intellectual Stack](#) by schedule function the schedule will be executed, but if not the schedule will not be done.

**X \*2):** The schedule can put into [Web Control](#) even if the projector is working in [Intellectual Stack](#), but the schedule will not be executed.

**X \*3):** The schedule setting cannot put into [Web Control](#) while the projector is working in [Intellectual Stack](#). The schedule will not be executed.







**NOTE** • If the schedule is not executed, an alert message will be sent out in any case in accordance with [Schedule Execution Error](#) setting on [Web Control](#). ([Network Guide](#) → 3. [Web Control](#) → 3.6 [Alert Settings](#)).

- If the schedule function is set to turn off the power, [Main](#) and [Sub](#) projectors will be turned off when the projectors are working in [Intellectual Stack](#).
- If the schedule function on [Main](#) projector is set to turn on the power, the projectors will start to work in accordance with [LAMP MODE](#) setting.
- When two projectors are working in [DUAL](#) mode, while a projector is displaying some menu on screen the schedule function for [My Image](#) and [Messenger](#) on the other projector will not be executed.
- Power Off in the chart means that the projector is turned off by settings on [Intellectual Stack](#) or by **STANDBY/ON** button on the remote control or control panel of [Main](#) projector, and is in standby mode.
- The projectors cannot be turned on by the schedule function on [Sub](#) projector. Set it on [Main](#) projector if necessary.
- When [Sub](#) projector is turned off in [ALTERNATE](#) mode, the schedule function on [Sub](#) projector to turn off [Sub](#) will be executed without an error.








## 7. Troubleshooting

About the phenomenon confused with a machine defect, check and cope with it according to the following table.

### Phenomena that may be easy to be mistaken for machine defects

Phenomenon	Cases not involving a machine defect	Reference page
Intellectual Stack does not work.	<b>The electrical power cords are not plugged in Main and Sub.</b> To use <a href="#">Intellectual Stack</a> feature, supply <a href="#">Main</a> and <a href="#">Sub</a> projectors with AC power. If one of the projector is not supplied, <a href="#">Intellectual Stack</a> becomes invalid on the other even if it is supplied with AC power.	 8 in <i>User's Manual (concise)</i>
	<b>RS-232C cable is not connected to Main and Sub projector correctly.</b> To use <a href="#">Intellectual Stack</a> , connect <a href="#">Main</a> and <a href="#">Sub</a> projectors with RS-232C cross cable. If not connected, <a href="#">Main</a> projector cannot control <a href="#">Sub</a> .	 11
	<b>The setting for Intellectual Stack on menu is not done properly.</b> Check the setting on <a href="#">STACK</a> menu on <a href="#">Main</a> and <a href="#">Sub</a> projectors. To use <a href="#">Intellectual stack</a> , <a href="#">STACK MODE</a> must be set to <a href="#">MAIN</a> on one projector and to <a href="#">SUB</a> on the other.	 18
	<b>Signal cables are not connected correctly.</b> Check the connection of cables. Also confirm that the cable connection and the port setting on menu are matched.	 28  10 - 14 in <i>Operating Guide</i>
Main and Sub do not work collaboratively.	<b>RS-232C cable is not connected to Main and Sub projector correctly.</b> Connect RS-232C cable properly and restart <a href="#">Main</a> projector.	 11

(continued on next page)

Phenomenon	Cases not involving a machine defect	Reference page
STACK menu cannot be operated.	<p><b>The settings on projectors are not set for Intellectual Stack feature.</b></p> <p>Check the following settings on Main and Sub projectors.</p> <ul style="list-style-type: none"> <li>- STANDBY MODE in SETUP menu: NORMAL</li> <li>- COMMUNICATION TYPE in COMMUNICATION in SERVICE menu: OFF</li> <li>- STACK LOCK in SECURITY menu: OFF</li> </ul>	 7
Projector does not react the remote control.	<p><b>The remote control points at Sub projector.</b></p> <p>When the projector is working on Intellectual Stack, only Main projector can receive the remote control signal. So, point at Main projector when you use the remote control.</p>	 6
Images are not overlapped properly or defocused.	<p><b>Two images are not superimposed correctly.</b></p> <p>Adjust ZOOM ring, VERTICAL adjuster, HORIZONTAL adjuster and FOCUS ring to superimpose them.</p> <p>If necessary, also adjust PERFECT FIT and KEYSTONE.</p>	 8  15
Though you try a fine adjustment, the images from two projectors are not superimposed.	<p><b>There is something different on adjustment between two images.</b></p> <p>Try to resolve it with the following measures.</p> <ul style="list-style-type: none"> <li>- Press AUTO button of the remote control or execute AUTO ADJUST EXECUTE on each of the projectors.</li> <li>- Adjust H POSITION and V POSITION on each of the projectors.</li> <li>- Check RESOLUTION setting on INPUT menu, and if it is different between the two projectors, make it same.</li> </ul>	 24 in Operating Guide  38 in Operating Guide  42 in Operating Guide