



mpi stylus.pro™

# mpi Stylus Pro Installation and Update Instructions

---

25 Maple Street, Suite 200. ■ Summit, NJ 07901 ■ 908.608.1558 ■ [www.markovprocesses.com](http://www.markovprocesses.com)

Copyright 1998-2007 Markov Processes International, LLC

---

## Help & Training from MPI Support

Questions or comments about MPI's products and services? Log on to our website at:

<http://www.markovprocesses.com>

### MPI User Name & Password

Your MPI user name and password are both your MPI serial number, provided to you separately by MPI upon registration. In future, these may be found by selecting Help-> About in the main menu. Please remember both your user name and password are case-sensitive.

### Support

#### E-mail

If you have any questions or concerns, please e-mail our support team at [support@markovprocesses.com](mailto:support@markovprocesses.com). A support specialist will be in touch with you shortly to help answer your questions. You may also include files/attachments in your e-mail, and everything you send to this address is considered confidential.

#### MPI Forums

Our user forums are great repositories of general questions users have already asked (and answered.) You can log in to them at: <http://www.markovprocesses.com/phorum/index.php>.

#### Phone

908-608-1558

MPI's Support lines are available Monday through Friday from 9 AM to 6 PM Eastern US time. MPI's US office is closed on US market holidays; during this period, there is generally a limited number of non-US staff dedicated to answering client inquiries.

#### Manual and Help Menu

The mpi Stylus Pro user manual and help menu may be found through the "Help" menu in the application.

### Training

To see a calendar of our complementary web trainings, please visit our website at:

<http://www.markovprocesses.com>

You may register for any course by e-mailing us at [training@markovprocesses.com](mailto:training@markovprocesses.com). You may also contact us at this address if you would like to discuss other training options.

## Section 1

# Installation Instructions

This document will help step you through the process of installing and updating mpi Stylus Pro. Choosing the correct installation option for mpi Stylus Pro is crucial to quickly and efficiently getting your team up and running in the software.

There are two types of installation for mpi Stylus Pro:

1. **Local Installation:** the application is installed directly on one or more specific computers and all files created/stored in an installation are specific to the computer/drive. This is the typical option for small user groups or users who do not need to share studies/data with other users of the application. In the case of local installations, each user must:
  - a. Install the application
  - b. Update their own data
  - c. Update the software as needed
  - d. Back up files as needed

### *Installing and Accessing mpi Stylus Pro Directly From the Network*

It is also possible to install mpi Stylus Pro on a network drive as if it were a “local” installation, with all users accessing the .exe file on the network drive, all files stored there, etc. However, this has some disadvantages that should not be ignored. For example, users may access the same files and save/overwrite one another’s work. It is highly recommended that users adopt either the traditional local installation or the network/workstation approach.

2. **Network/Workstation Installation:** Individual configuration settings are put in place to allow access to shared network folders and private local drive folders. For this configuration setting, the network connection must be available for the user to launch/run mpi Stylus Pro. This is the typical option for users who need to share studies/data with other team members.

### *Migrating a Local Installation to a Network Installation*

If you are interested in migrating your local installation to a network/workstation setup, please see the instructions on page 13. This applies only to existing installations; new users should continue with the information below.

To provide better insight into which installation option is appropriate for you, please consider the table below:

	Local	Network/Workstation
<i>Application installation</i>	Individual PC	Both PC and Network
<i>Data Updates</i>	Done individually by each user	Done by one user and linked to by PCs
<i>Performance Speed</i>	Fastest access to files/data	Will depend on location of file being accessed
<i>Study Sharing</i>	Difficult; requires sending files to other users	Depends upon local or network location of file; users may have access to some files but not others
<i>File Security</i>	High; only the individual user has access	High for individual, low for network
<i>Backup Concerns</i>	Data can be lost if computer is not backed up	Backup must be maintained for both network and PCs

### **Important Note for Installations**

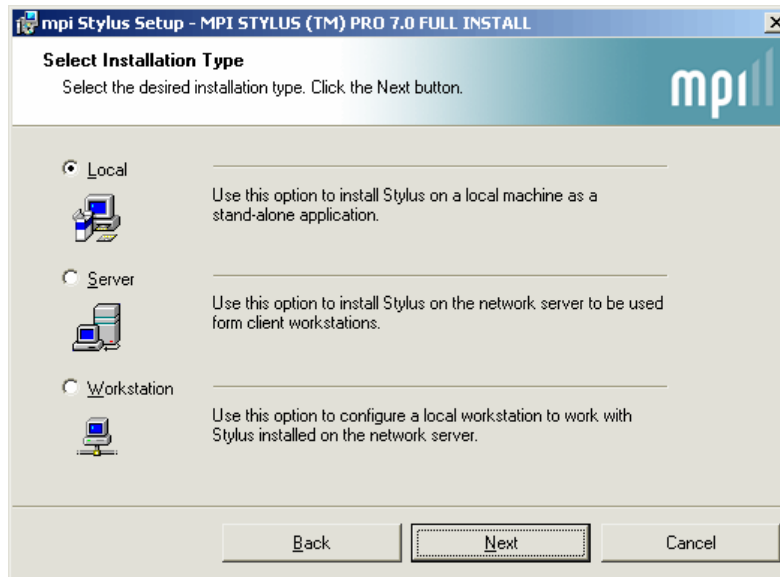
In order to install mpi Stylus Pro on your PC and/or network, you must have appropriate read/write access to the drives in question. If you do not, this must be resolved with your IT department internally; MPI is unable to resolve read/write issues, network problems, etc.

## Section 2

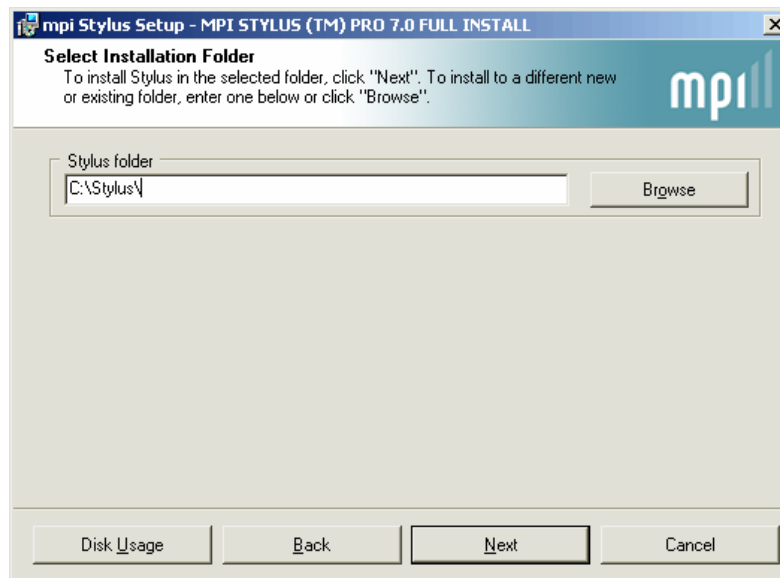
# Local Installation Instructions

To install mpi Stylus Pro on a PC (hard drive):

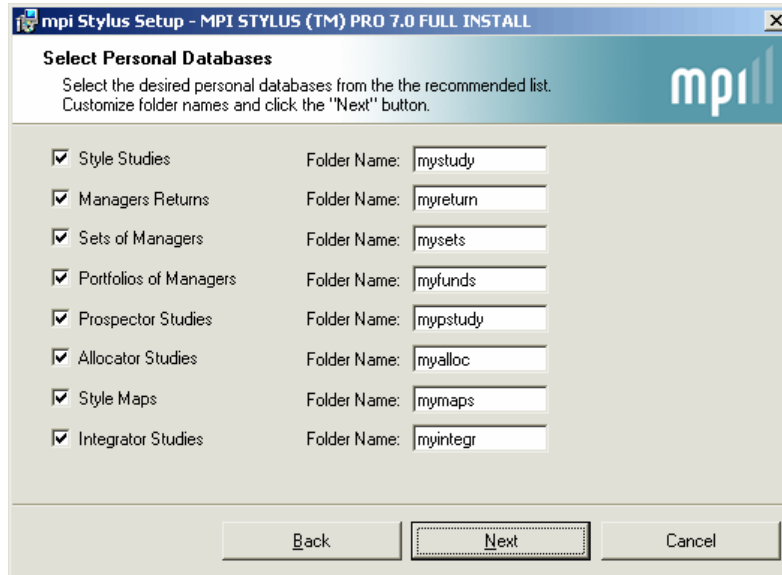
1. **Start the installation wizard by executing (double-clicking) the installation file provided in the Welcome Package. In the first screen select the “Local” option:**



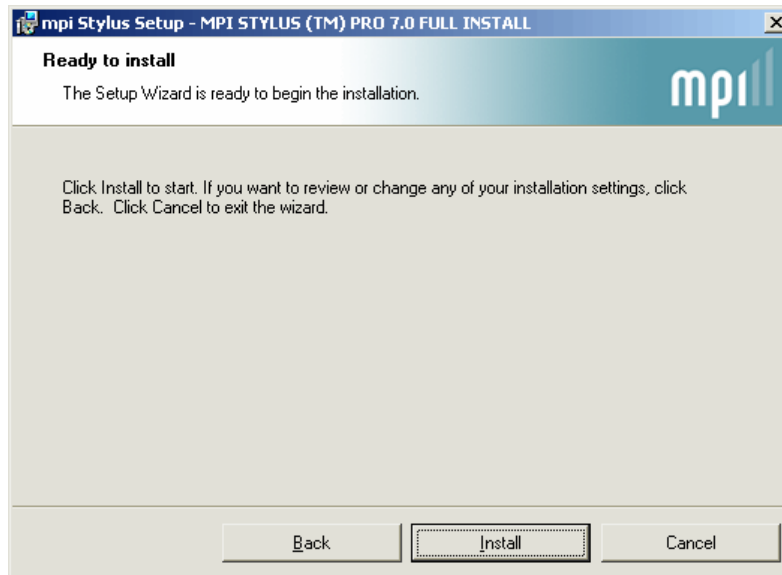
2. **Specify the location (including drive letter) for the Stylus folder that will be created. The recommended default is C:\Stylus\.**



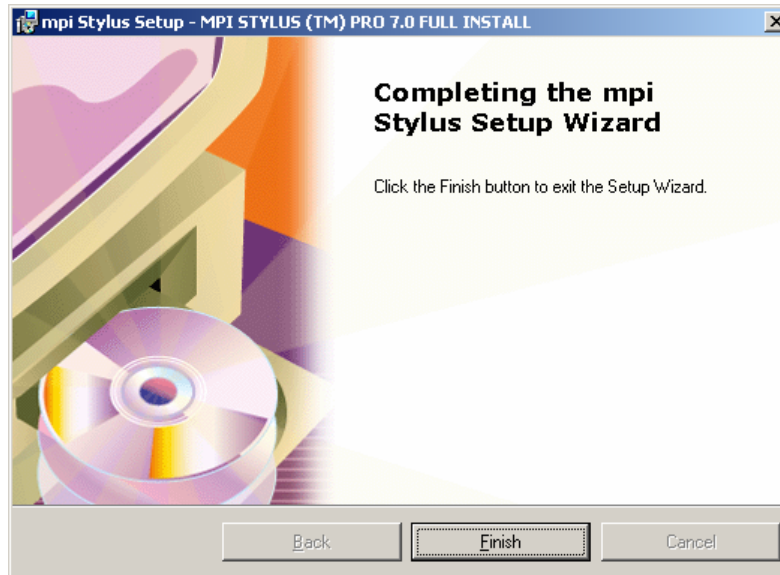
- Individual databases (data folders where your personal studies/files will reside) are created on each user's PC. If you feel you do not need one or more listed default databases, you may uncheck them at this time. **It is recommended that you install all databases at this step.**



- Click the 'Install' button to install mpi Stylus Pro. This may take a few minutes.



5. **Once you see the final screen below, click 'Finish.'** The final step will be to locate your **mpi Stylus Pro** license file (which will have been provided to you by MPI) and to save it directly to your root Stylus folder (for example, to **C:\Stylus\**). Once this is completed, you may launch mpi Stylus Pro. Please keep in mind that you must now proceed to the Update Procedures portion of installation, detailed on page 15 of this document.



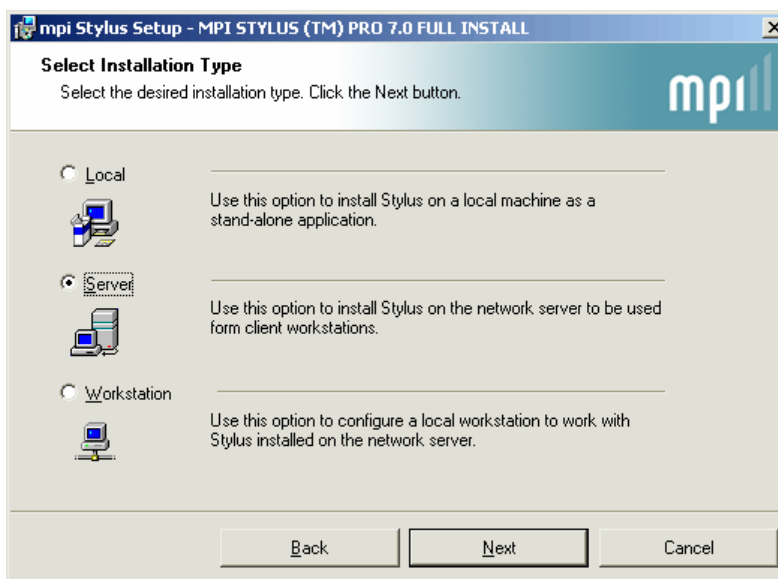
## Section 3

# Network/Workstation Installation Instructions

To install mpi Stylus Pro on a network, there will be two stages to the software install. First you will install it at the network location, and then on individual workstations.

### *Network Install*

1. **Start the installation wizard by executing (double-clicking) the installation file provided in the Welcome Package. In the first screen select the “Server” option:**



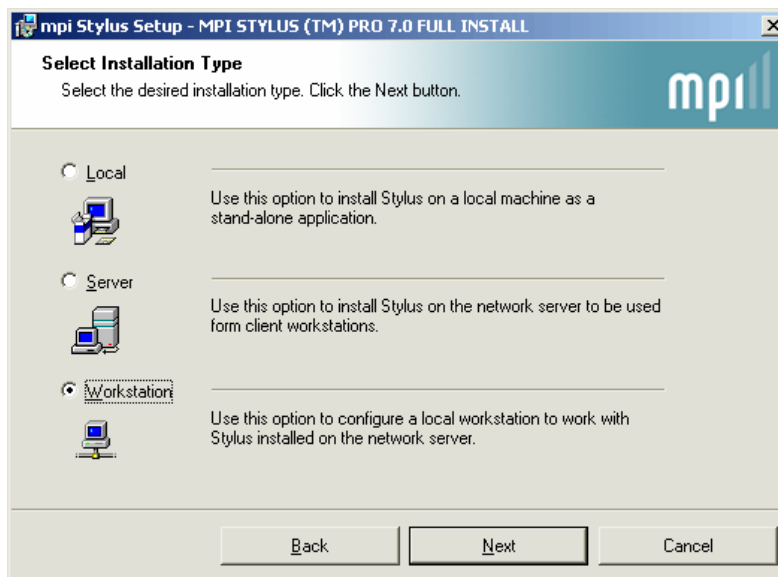
2. **Specify the location on the server (including drive letter) for the Stylus folder that will be created. Once this is completed, please proceed to step 3 of the Local Installation instructions (page 6) and follow the steps from there.**
3. **Now, it will be important to install and update all databases on the network copy of Stylus in order to avoid having to do this for each installation.** This will be necessary if the 'Copy' option will be used for the stylus.ini file in the workstation install. For the 'Link' option, databases may be installed at any time.
4. **Once the installation is complete, proceed to the Workstation Install below and complete the install for each computer that will use mpi Stylus Pro.**



### Workstation Install

Once the network version has been installed, you may proceed to install the application on each workstation. To perform a workstation installation:

1. **Start the installation wizard by executing (double-clicking) the installation file provided in the Welcome Package. In the first screen, select the “Workstation” option and click ‘Next’.**



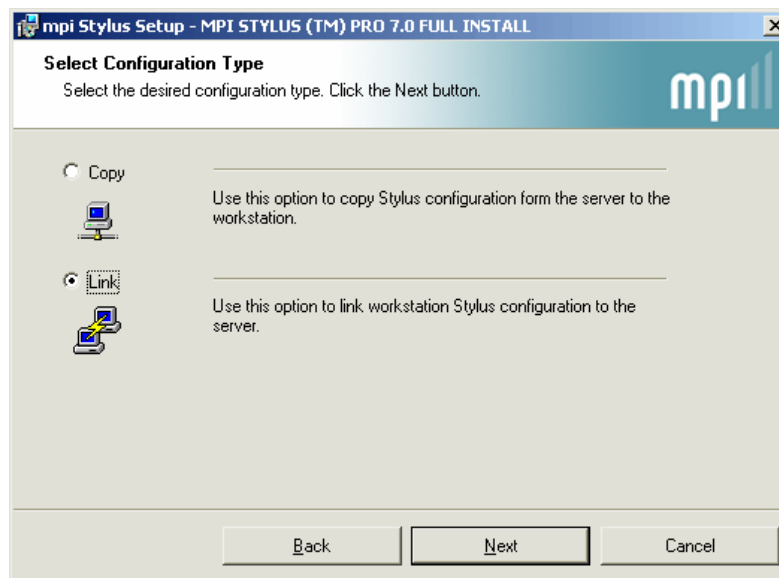
2. The next screen will ask to **choose one of two options: Copy or Link. Click ‘Next’ after you make your selection.**

### Link

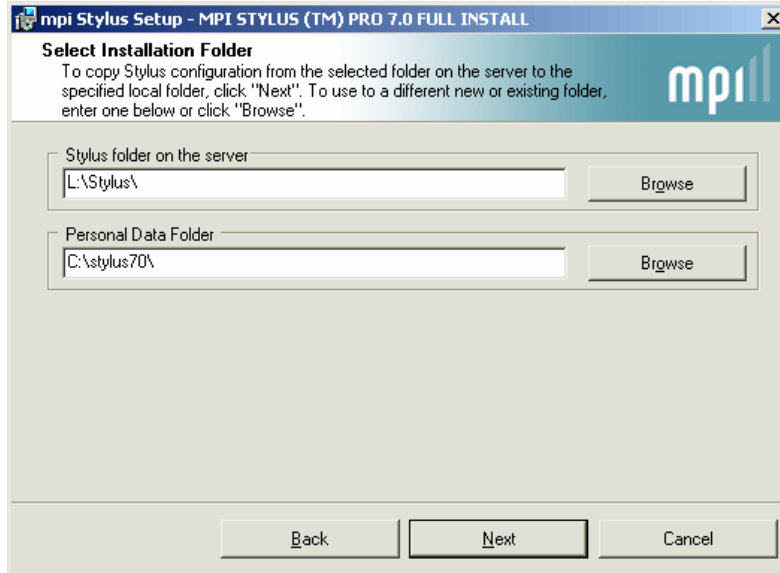
The Link option is our recommendation for all network/workstation installations. When you link the local .ini configuration file to the network's .ini file, you have the ability to add databases to the network so that all users may automatically access them. This means that databases may be added or removed at the network level and all user installations will reflect these changes.

### Copy

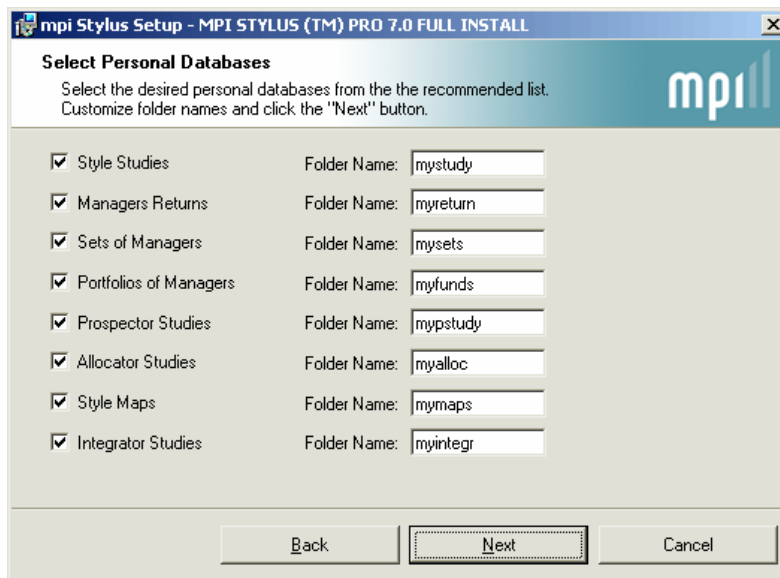
When the Copy option is selected, the configuration file from the network is copied to the local computer at the time of the initial install. This means that any changes made to the network's .ini file after the initial install will not be reflected on a user's computer unless the network .ini file is again copied to the individual PC. In cases where the Copy option is used, the user is responsible for updating databases. Before selecting the Copy option, it is recommended that all databases on the server be downloaded and configured to minimize the need for additional manual changes at the workstation level.



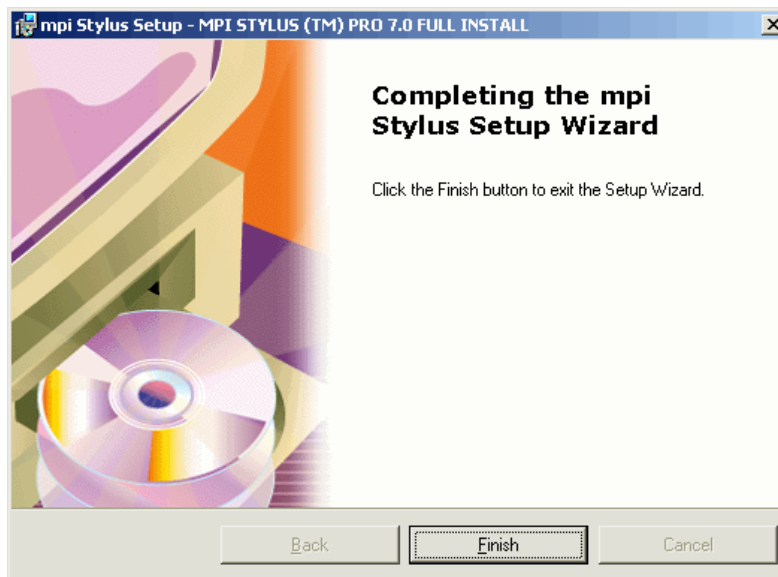
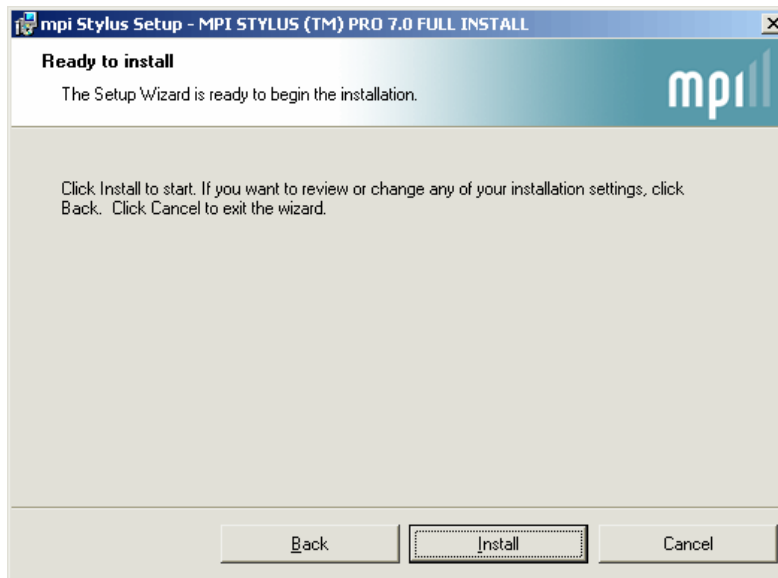
3. **Specify the Stylus folder location on the server (1) and local workstation (2).** Make sure to include the appropriate drive letter.



4. In addition to shared databases located on the server and accessible by other users, individual databases (data folders where your personal studies will reside) may be created on each user's workstation. **Uncheck any boxes for folders you do not need and click 'Next' to complete the installation.**



5. Click 'Install' to begin the Installation process. This may take a few minutes.

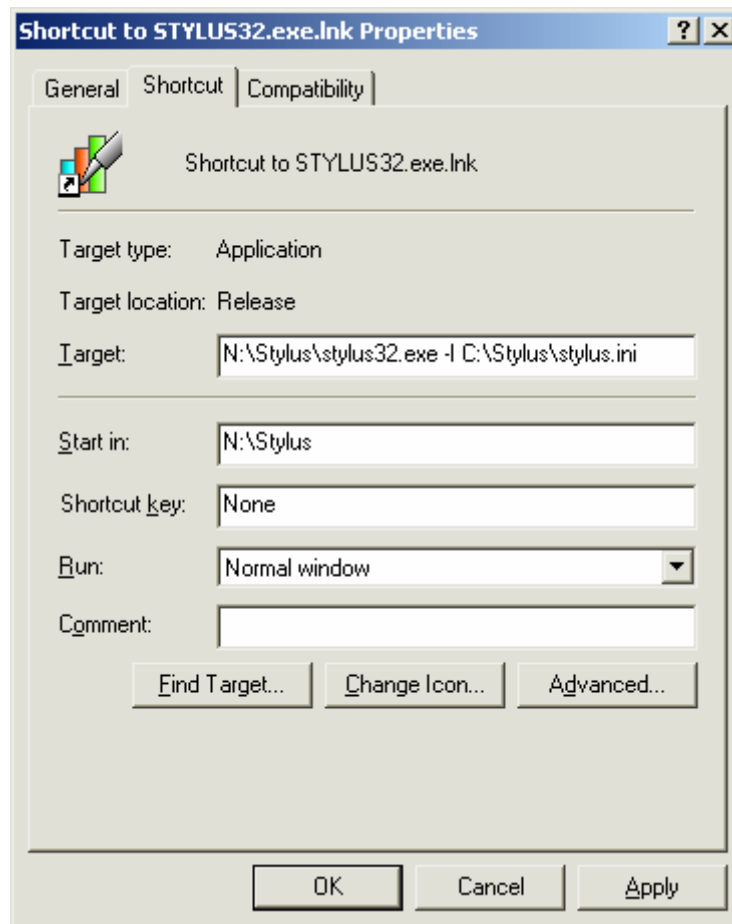


6. Once the installation has finished, click 'Finish' to close the wizard. You may now proceed with downloading and updating your data (page 15).

## Migrating a Local Installation to a Network Installation

These steps will help users who wish to migrate a local installation to a network/workstation setup. The optimal way to accomplish this is to have individual Stylus.ini files on each workstation. To do this:

1. **Create** a network installation if you do not already have one.
2. **Copy** the network .ini file to: C:\Stylus\stylus.ini on each individual PC.
3. If you do not have a shortcut to mpi Stylus Pro on your desktop, **create one at this time.**
4. **Right-click on the shortcut** to the network installation and **select 'Properties.'**
5. **Click the 'Shortcut' tab.**
6. **In the 'Target' field, type in: N:\Stylus\stylus32.exe -I C:\Stylus\stylus.ini** keeping in mind that "N" should be replaced with whatever your network drive letter is, and "C" may need to be replaced if another letter is used for your local drive. Please ask your IT team for details if you are unsure.
7. **Click the OK button to accept the changes.** Now, when you use this shortcut to start mpi Stylus Pro, it will use the local .ini file to record any changes to the mpi Configurator settings. You can also create local study or template databases and configure them appropriately without having them shared on the network.



8. In the interests of efficiency, you will still want to make sure your databases are configured to the appropriate network. **Please open mpi Stylus Pro and go to File-> Configure.**

9. **Click on the Linked Database List field and select N:\Stylus\stylus.ini (shared configuration.)** Please note that in the event of conflicting database IDs (i.e., a database on the local installation and a database on the network both have ID XYZ), the local .ini file's database will be used.
10. Remove all shared databases from the "local" configuration (i.e., databases from Manager Series, Index Series, etc.)

---

## Section 4

# Update Procedures

There are two types of updates available for mpi Stylus Pro: updates for the application and updates for the underlying data. In both cases, always make sure to close mpi Stylus Pro before fully running an update. Our mpi Updater tool has a built-in option to close the application before running updates.

### mpi Stylus Pro Software Updates

MPI regularly updates our software to introduce new features, verify and fix bugs, etc. It is strongly recommended that all users periodically update mpi Stylus Pro in order to avail themselves of the most powerful, stable version of the application available. Updates are available at the following link:

<http://www.markovprocesses.com/securedata/updates/updates.htm>

When prompted to type in your user name and password, use your mpi Stylus Pro license number for both fields (it is case-sensitive.) The License number, build date and package subscription information can be found under Help-> About in the application.

### Database Updates

No databases are included/updated in the Stylus installation file or in application updates, so once the application is installed it is still necessary to download and update any databases to which your firm subscribes. The frequency with which these should be updated will relate to the data frequency (i.e., monthly, daily, etc.) The complete update schedule may be found at:

[http://markovprocesses.com/securedata/updates/MPI\\_DatabaseUpdateReference.pdf](http://markovprocesses.com/securedata/updates/MPI_DatabaseUpdateReference.pdf)

*mpi Updater (Tools-> mpi Updater)*

To update your data through the application using the mpi Updater tool, please refer to Chapter 9 (Helpful Stylus Tools) in the mpi Stylus Pro User Manual. Please note that security settings at some companies may include firewalls that prevent the mpi Updater from working properly. In these cases, the web site update approach should be used instead.

*Updating via the MPI Web Site*

You may update your data (one database at a time) through the MPI web site. Due to security settings at some companies, this may be the only update option as some firewalls prevent the mpi Updater Tool from working properly.

You may also wish to examine the possibility of automating your web updates. Information may be found at:

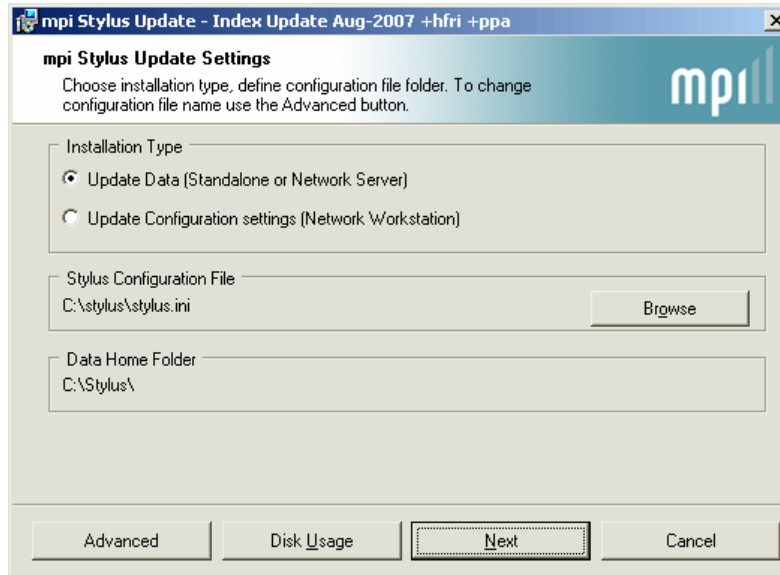
[http://www.markovprocesses.com/securedata/updates/mpi\\_Web\\_Updater\\_Batch\\_Mode.pdf](http://www.markovprocesses.com/securedata/updates/mpi_Web_Updater_Batch_Mode.pdf)

To update specific databases via our web site:

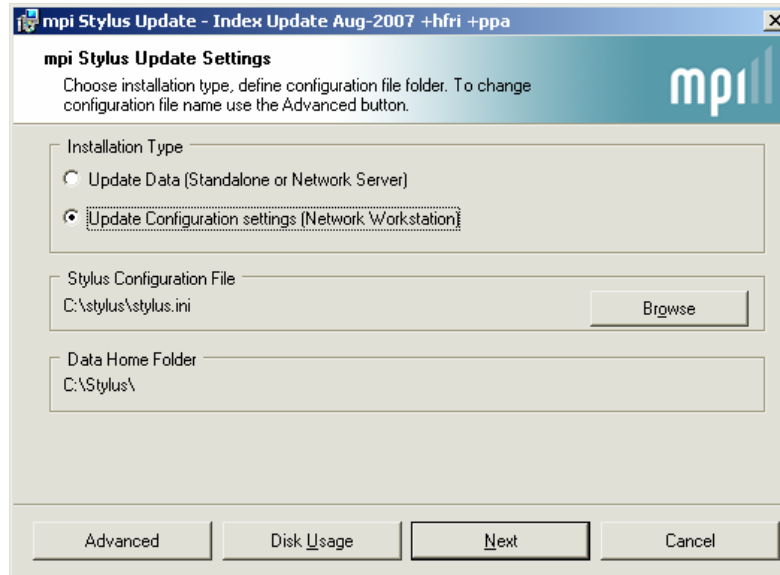
1. **Go to our web site at <http://www.markovprocesses.com> and select Support-> Updates.**
2. **Identify the database you wish to update and click the link to download or run the associated .msi file.**

3. If you are installing data for a Local installation, please select “Update Data” and click ‘Next’. If you are installing data for a Network/Workstation installation, please select “Update Configuration Settings” and click ‘Next’.

### Local Installation



### Network/Workstation Installation



6. Once the update runs, click ‘Finish’ to close the wizard. You may now open mpi Stylus Pro and use your updated data.