

Quick Start Guide

Samsung *Device Configuration Tool*



SAMSUNG
Device Configuration Tool



I Copyright

Copyright © 2012 Samsung Electronics

This user manual is protected under international copyright laws.

No part of this user manual may be reproduced, distributed, translated, or transmitted in any form or by any means, electronic or mechanical, including photocopying, recording, or storing in any information storage and retrieval system, without the prior written permission of Samsung Electronics.

I Trademarks

SAMSUNG and the SAMSUNG logo are registered trademarks of Samsung Electronics.

Other names may be trademarks of their respective owners.

I Instructional icons



This symbol is found in front of a note to highlight useful information and features.



This symbol is found in front of a caution message to alert the user that damage to property may occur or the solution may not function properly if instructions are not followed.

I Introduction

The Device Configuration Tool, called DCT, independently manages user setting profiles for any Samsung mobile device using the Android Ice Cream Sandwich operating system, including Samsung smartphones and tablets.

I Installing the software

System requirements

Computer OS

Windows XP or Windows 7

Device OS

Android Ice Cream Sandwich, MDM Framework version 2.1 or higher

CPU

Pentium 1.8 GHz or Intel Core 2 Duo 2.0 GHz

Operating Memory

1 GB RAM minimum

Hard Drive storage

500 MB for installation

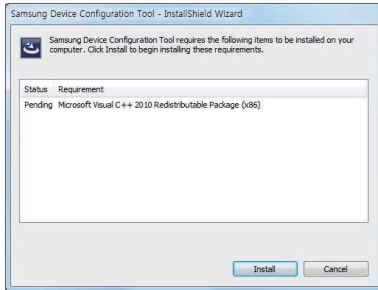
Display

1024x768 (600), 32-bit

Installing DCT on a computer

Double-click the installation file to install the DCT software.

1 Click the **Install** button.



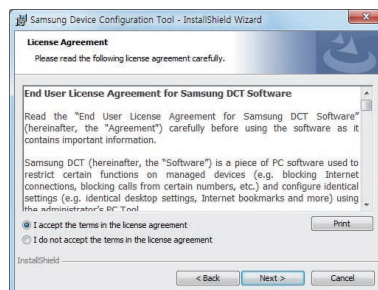
2 Wait while the installation wizard is preparing for installation.



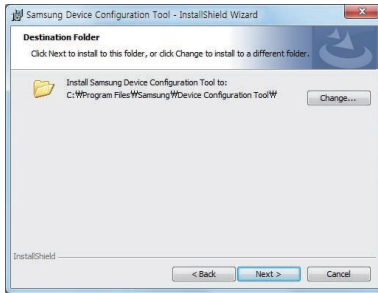
3 Click the **Next** button.



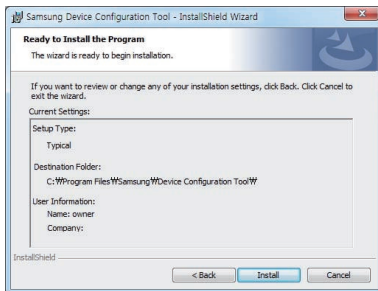
4 Agree to the license agreement and click the **Next** button.



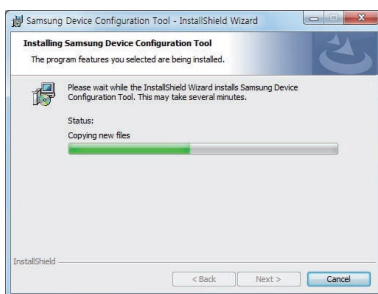
- 5 Select a folder to install the software, and click the **Next** button.



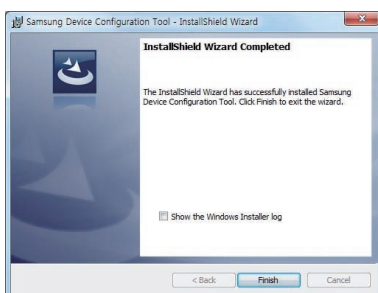
- 6 Click the **Install** button to start installation.



- 7 Wait until the installation is complete.



- 8 Click the **Finish** button to finish the installation.



During the installation process, the installation wizard installs the USB driver for the Samsung mobile devices, if not installed already.

Installing DCT Agent on a device

To enable DCT to access and control the device, a system program called DCT Agent should be installed on the device.

Follow this procedure:

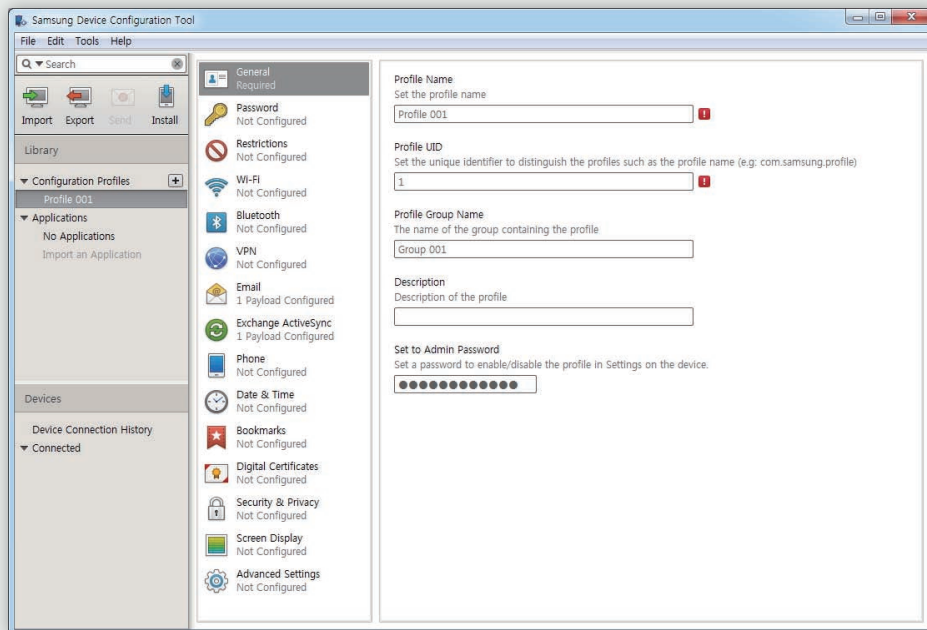
- 1.** To allow DCT to install DCT Agent, on the device go to **Settings > Developer options** and activate **USB debugging**. This setting can only be changed when the device is not actually connected to a computer.
- 2.** Launch DCT on the computer, and connect the device to the computer using the USB cable.
- 3.** When DCT asks for permission to install DCT Agent on the device, confirm it.

When successfully installed, a dialog box appears on the device, asking to activate DCT Agent. Confirm it by tapping the **Activate** button.

Setting a master password

When launching DCT for the first time, the user must set a master password. It is not possible to use DCT without setting a master password. The master password should be at least 4 characters long. If the **Stay Signed in** checkbox is not checked, the user is required to enter the master password to use DCT whenever launching DCT. It is a good idea not to use this option for better security. This setting can be changed under **Tools > Settings**. Be aware that the master password can never be changed unless DCT is reinstalled.

I The interface



There are two panels on the left of the window:


- On the Library panel, **Configuration Profiles** shows any profiles ready for installing on a device
- On the Library panel, **Applications** shows any applications ready for installing on a device.
- On the Devices panel, **Device Connection History** shows the history of devices connected to DCT.
- On the Devices panel, **Connected** shows devices that are currently connected to DCT.

The device should be listed under **Connected** when connecting a device to the computer. Users can inspect:

- The device's information
- The configuration profile in use and any others available for installation
- Certificates and their expiry dates
- A list of user-installed applications

I Creating profiles

To create a new profile from scratch, click the plus icon  beside **Configuration Profiles** in the Library panel.

Click setting categories on the center panel to display all of their options on the right panel. Checking the box beside a category title allows users to change that category's options. Some of the options require text entries and others require only checkmarks, while some of the fields are mandatory and others can be left blank. Mandatory fields are marked with a red exclamation symbol . When selected, some of the options display their sub-options.

I Installing profiles

To install a profile on a device, select a profile from the Configuration Profiles list. With the profile selected, click the **Install** icon in the toolbar, select a device from the list of connected devices that appears, and then click the **Install** button.



Installing a profile may cause the device's active features and applications to malfunction. It is much better to keep the device in idle mode before installing a profile.

There is another way to install a profile. Select a device under **Connected** in the Devices panel, click the **Configuration Profiles** tab on the right panel, and then click a profile's **Install** button.

When a profile is installed on a device for the first time, the device's former state is preserved for future restoration. Clicking a profile's **uninstall** button returns the device to the original state. Profiles are distinguished by Profile UID. When a profile is already installed on a device, it can be updated by installing the same profile. Installing a different profile overrides the existing profile.



DCT creates and uses a unique key for the computer on which it is installed. with this key, only the computer that installed the profile onto the device can remove the profile and bring the device back to its original state. However, there are two ways to enable other computers to control the device. Either uninstall the existing profile to restore the device, or copy the key to other computers. See "Managing profiles" for details.

I Managing profiles

Exporting and importing a profile

It is a good idea to save a profile as a separate file. To save a profile, select a profile from the Configuration Profiles list and click the **Export** icon in the toolbar. Choose one of the following options when saving the profile:

- **None:** No encryption is used.
- **Signature of configuration profile:** This profile cannot be used with any other computer than the one on which the profile was created.
- **Devices' encrypted Configuration Profiles creation and signature:** This profile is only compatible with a specific device. With this option selected, select a device to use with the profile.

The file extension for profile files is "dctprofile".

To import a profile from a saved file, click the **Import** icon in the toolbar.

The profile is stored in the default DCT directory. To change the default directory, select the **Tools > Settings** menu, then set a different directory to **Default Folder**.

Deleting a profile

To delete a profile, select a profile from the Configuration Profiles list and press the delete key.

Exporting and importing a key

Once a profile is installed on a device, the device can be only accessed from computers that use the same key. Back up the key in order to make other computers available, especially in case that the original computer is out of order.

To export the key, select the **Tools > Settings** menu, then click the **Export** button under **Key Store**. Enter the master password, click the **OK** button, and select a folder in which to save the key. The key is saved with the master password.

To import a key, select the **Tools > Settings** menu, then click the **Import** button under **Key Store**. Click the **Yes** button to accept the warning message that appears, select a key file, enter the master password associated with the key, and then click the **OK** button. After a key is imported, the master password is changed to that of the imported key.

I Profile options

General

This category governs the profile's basic information.

Password

This category establishes a password policy which is used to unlock the device.

Restrictions

This category limits the use of the device's features and applications. Deselecting an option in this category disables or hides its corresponding item on the device.

Wi-Fi

This category manages Wi-Fi networks to be used.

Bluetooth

This category controls Bluetooth connections.

VPN

This category manages virtual private networks to be used.

Email

This category manages email accounts to be used.

Exchange Active Sync

This category manages Exchange Active Sync accounts to be used.

Phone

This category controls the device's phone functionality.

Date and Time

This category controls the display of the date and time on the device.

Bookmarks

This category manages bookmarks to be used on the device.

Digital Certificates

This category manages digital certificates to be used on the device.

Security and Privacy

This category controls security and privacy settings.

Screen Display

This category manages the screen display on the device.

Advanced settings

This category governs the mobile network to be used and controls applications' internet access.

Applications can be installed on and uninstalled from devices using DCT.

I Importing applications

To import a user-created application to DCT for later installation on a device, select **Applications** in the Library panel, click the **Import** icon on the toolbar, and then select an application file.

Imported applications appear under **Applications** in the Library panel.

I Installing applications

To install an imported application onto a device, select an application under **Applications** in the Library panel, and click the Install icon on the toolbar.

I Uninstalling applications

DCT can be used to remove any user-installed applications from the device.

Select a device under **Connected** in the Devices library, click the **Applications** tab in the right panel. Find the desired application and click its **Uninstall** button.

If the **Allow uninstall by User** checkbox is not checked, this particular application will not be removable by any user on the device itself. These applications will only be removable from DCT.