

NETSHOP USER MANUAL

Contents

I.	GLOBAL SETTINGS FOR END CUSTOMER KITCHEN CATALOG	2
		2
A.	WORKTOP SELECTION	3
B.	FACIA DESIGN SELECTION.....	4
	C) WILSON ART FACIA WITH FOUR SIDE EDGE BAND- HERE THE BASE MATERIAL IS MDF WHICH HAS ESP LAMINATE OF CHOSEN COLOR ON ONE SIDE AND WHITE/ IVORY LAMINATE ON OTHER SIDE (18MM). YOU HAVE TO CHOOSE THE COLOR FOR THE LAMINATE.	5
	D) WILSON ART FACIA WITH FOUR SIDE EDGE BAND- HERE THE BASE MATERIAL IS MDF WHICH HAS ESP LAMINATE OF CHOSEN COLOR ON ONE SIDE AND WHITE/ IVORY LAMINATE ON OTHER SIDE (18MM) AND WHICH HAS 2 OPPOSITE EDGES FORMED. YOU HAVE TO CHOOSE THE COLOR FOR THE LAMINATE.	5
	E) MEMBRANE SHUTTERS WITH PROFILE- HERE THE BASE MATERIAL IS MDF AND IT IS COVERED WITH PVC FOIL BY THERMOFORMING PROCESS ON ONE SIDE AND WHITE /IVORY LAMINATE ON OTHER SIDE (18MM) HERE YOU GET A CHOICE OF ROUTED PROFILES WHICH YOU CAN CHOOSE FROM. ALSO YOU HAVE TO SELECT THE COLOR FOR THE FOIL.	5
C.	SELECTION OF SKIRTING	5
D.	HINGE SELECTION	6
II.	ARTICLE CONFIGURATION AND INSERTION	7
	CONSTRUCTION PRINCIPLE.....	8
	MATERIAL.....	9
	CATEGORIES	10
	UNIT SPECIFICATIONS FOR BASE UNITS	12
	ARTICLES WITH PECULIAR CHARACTERISTICS	13
B.	OVERHEAD UNITS	15
	CONSTRUCTION PRINCIPLE.....	15
	MATERIAL.....	16
	CATEGORIES	17
	UNIT SPECIFICATIONS FOR OVERHEAD UNITS	18
	ARTICLES WITH PECULIAR CHARACTERISTICS	18
C.	SEMI TALL UNITS	19
	CONSTRUCTION PRINCIPLE.....	19
	MATERIAL.....	20
	CATEGORIES	21

NETSHOP USER MANUAL

UNIT SPECIFICATIONS FOR SEMI TALL UNITS	23
D. TALL UNITS	23
CONSTRUCTION PRINCIPLE.....	23
MATERIAL.....	25
CATEGORIES	26
UNIT SPECIFICATIONS FOR TALL UNITS	28
III. DRAWER AND ACCESSORY DETAILS	29

I. GLOBAL SETTINGS FOR END CUSTOMER KITCHEN CATALOG



IN THE “FIRST STEPS NETSHOP” DOCUMENT WE HAVE LEARNT THE USE OF THE BELOW THINGS

ROOM PLANNER
ARTICLE SHOP
BASKET MANAGER

BEFORE WE START WITH THE ARTICLE SHOP AND START CONFIGURING ARTICLES TO INSERT IN ROOM, WE SHALL MAKE THE GLOBAL SETTINGS. IN THE GLOBAL SETTINGS WE SET VALUES FOR SOME PARAMETERS WHICH ARE GOING TO BE SAME FOR THE SET OF ARTICLES THAT YOU PLAN TO INSERT IN THE ROOM PLANNER.

THIS HELPS IN SAVING TIME BY AVOIDING THE NEED TO SELECT SAME VALUES FOR EVERY ARTICLE.

TO ENTER IN GLOBAL OPTIONS SELECTION CLICK ON THE ICON GLOBAL SETTING AVAILABLE IN THE ROOM-PLAN WINDOW. YOU WILL FIND THE GLOBAL SETTINGS OPTIONS IN THE LEFT TOP CORNER OF THE PAGE. CLICK ON THE DESIGN PARAMETERS LISTED ONE BY ONE AND MAKE APPROPRIATE SETTINGS. FURTHER DISCUSSION WILL BE USEFUL FOR THE CORRECT SELECTION.

NETSHOP USER MANUAL

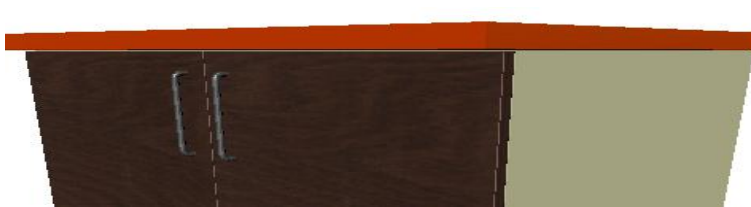
A. WORKTOP SELECTION

HERE YOU CHOOSE THE TYPE OF WORK TOP THAT YOU WANT, ITS COLOR AND ITS THICKNESS.

- 1) CHOICE OF GRANITE IS AVAILABLE BUT IT SERVES **ONLY** THE **PRESENTATION** PURPOSE. SO THE **COST OF THIS GRANITE OR ITS INSTALLATION IS NOT INCLUDED IN THE COSTING.**

ITS DEFAULT **THICKNESS IS CONSIDERED TO BE 36 MM.** SO IF SUPPOSE YOU WANT A KITCHEN WITHOUT A WORKTOP YOU SHOULD SELECT THIS OPTION.

- 2) THE SECOND OPTION IS FOR WORKTOP WITH 4 SIDE EDGEBAND. IT IS AVAILABLE IN THICKNESSES 18MM, 25MM. THE CORE MATERIAL HERE IS MDF WHICH IS COVERED BY OUR SPECIAL PURPOSE "ENGINEERED SURFACE PRODUCT" I.E. ESP LAMINATE ON TOP SIDE.



- 3) THE THIRD OPTION IS POST-FORMED TOP WHICH IS AVAILABLE IN THICKNESSES 25MM AND 36MM. HERE TOO THE CORE MATERIAL HERE IS MDF WHICH IS COVERED BY ESP LAMINATE ON TOP SIDE AND WHICH IS FORMED AT ONE EDGE.



NETSHOP USER MANUAL

B. FACIA DESIGN SELECTION

- 1) FIRST SELECT THE COLOR PALLET FOR THE KITCHEN. IF YOU WANT TO HAVE THE FACIA FOR ALL THE ARTICLES IN A SINGLE COLOR THEN YOU SELECT SINGLE COLOR PALLET. IF YOU WANT TO HAVE THE FACIA FOR ALL THE KITCHEN ARTICLES IN A COMBINATION OF 2 COLORS THEN YOU SELECT THE TWO COLOR PALLET OPTION.
- 2) THEN YOU ARE ASKED IF YOU WANT ALUMINIUM PROFILE (G-SECTION) HANDLES FOR THE KITCHEN ARTICLES. YOU HAVE TO SELECT YES OR NO AS PER YOUR REQUIREMENTS.

NOTE: 1) IF YOU HAVE SELECTED ALUMINIUM PROFILE HANDLES FOR YOUR KITCHEN THEN YOU HAVE THE OPTION FOR SELECTING FILLERS THAT IS AS USUAL FILLERS IN THE KITCHEN OR G-SECTION FILLER. FOR G-SECTION FILLER MINIMUM WIDTH OF FILLER POSSIBLE IS 50MM.

2) IT IS SUGGESTED THAT FOR OVERHEAD UNITS TRY TO AVOID THE ALUMINIUM PROFILE HANDLE. IN THAT CASE BEST POSSIBLE OPTION IS GO FOR HANDLE LESS OVERHEAD UNITS.

- 3) THEN YOU ARE ASKED WHAT KIND OF FRONT DESIGN YOU WANT. YOU HAVE 5 OPTIONS:
 - A) **PLY FACIA WITH FOUR SIDE EDGE BAND-** HERE THE BASE MATERIAL IS BWR GRADE PLY WHICH HAS LAMINATE OF CHOSEN COLOR ON ONE SIDE AND WHITE/IVORY LAMINATE ON OTHER SIDE (18MM). YOU HAVE TO CHOOSE THE COLOR FOR THE LAMINATE.
 - B) **PLY FACIA WITH HALF ROUND POST-FORM-** HERE THE BASE MATERIAL IS BWR GRADE PLY WHICH HAS LAMINATE OF CHOSEN COLOR ON ONE SIDE AND WHITE/

NETSHOP USER MANUAL

IVORY LAMINATE ON OTHER SIDE (18MM) AND WHICH HAS 2 OPPOSITE EDGES FORMED.

- C) **WILSON ART FACIA WITH FOUR SIDE EDGE BAND-** HERE THE BASE MATERIAL IS MDF WHICH HAS ESP LAMINATE OF CHOSEN COLOR ON ONE SIDE AND WHITE/ IVORY LAMINATE ON OTHER SIDE (18MM). YOU HAVE TO CHOOSE THE COLOR FOR THE LAMINATE.
- D) **WILSON ART FACIA WITH FOUR SIDE EDGE BAND-** HERE THE BASE MATERIAL IS MDF WHICH HAS ESP LAMINATE OF CHOSEN COLOR ON ONE SIDE AND WHITE/ IVORY LAMINATE ON OTHER SIDE (18MM) AND WHICH HAS 2 OPPOSITE EDGES FORMED. YOU HAVE TO CHOOSE THE COLOR FOR THE LAMINATE.
- E) **MEMBRANE SHUTTERS WITH PROFILE-** HERE THE BASE MATERIAL IS MDF AND IT IS COVERED WITH PVC FOIL BY THERMOFORMING PROCESS ON ONE SIDE AND WHITE /IVORY LAMINATE ON OTHER SIDE (18MM) HERE YOU GET A CHOICE OF ROUTED PROFILES WHICH YOU CAN CHOOSE FROM. ALSO YOU HAVE TO SELECT THE COLOR FOR THE FOIL.

NOTE- 1) NOW FOR THE ABOVE FOUR OPTIONS YOU CAN HAVE THE COLOR OF THE EDGE BAND SAME AS THAT OF THE FACIA COLOR OR YOU CAN SELECT A COLOR FOR THE EDGE BAND OF YOUR CHOICE AS ASKED IN THE NEXT OPTION. BUT THIS YOU CAN DO ONLY WHEN YOU HAVE SELECTED A SINGLE COLOR PALLET.

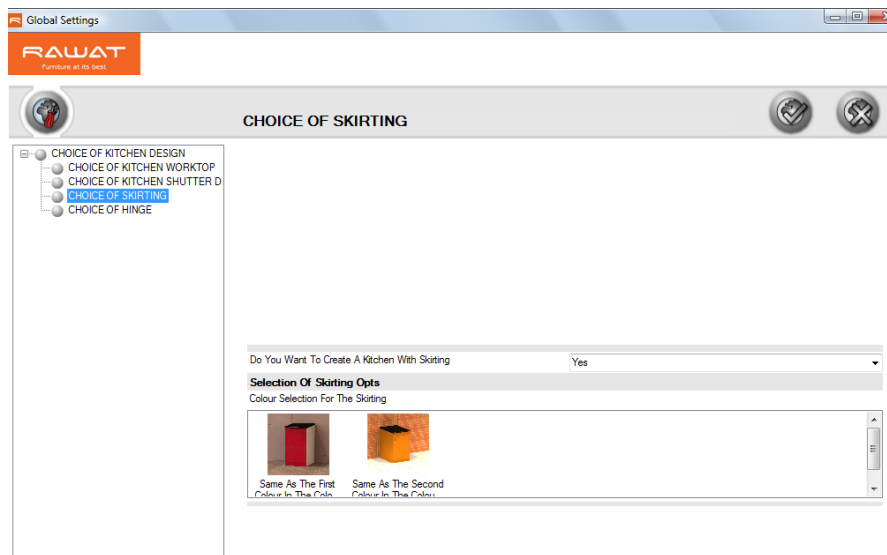
2) IF YOU HAVE SELECTED ALUMINIUM PROFILE HANDLE OPTION THEN YOU WILL NOT GET THE OPTION FOR POST-FORMED SHUTTERS. ALSO IN MEMBRANE YOU WILL NOT GET PROFILE OPTIONS ONLY THE PLAIN PROFILE IS SELECTED BY DEFAULT.

3) IF YOU HAVE SELECTED THE TWO COLOR PALLET THEN YOU HAVE TO CHOOSE BOTH THE COLORS AS ASKED. IT IS RECOMMENDED THAT YOU WRITE DOWN OR REMEMBER THAT OF THE TWO COLORS THAT YOU HAVE SELECTED WHICH ONE IS FIRST AND WHICH ONE IS SECOND.

4) YOU HAVE TO SELECT THE OPTIONS AND ANSWER EACH OF THE QUESTIONS AND IN THE SEQUENCE THAT THEY HAVE BEEN ASKED. IF YOU DO NOT DO SO THERE IS A RISK THAT YOUR CHOICES ARE NOT PASSED ON IN THE ARTICLE AS A RESULT OF WHICH THERE CAN BE CONSEQUENCE OF WRONG SELECTION AND WRONG PRICING FOR WHICH YOU WILL BE RESPONSIBLE.

C. SELECTION OF SKIRTING

NETSHOP USER MANUAL



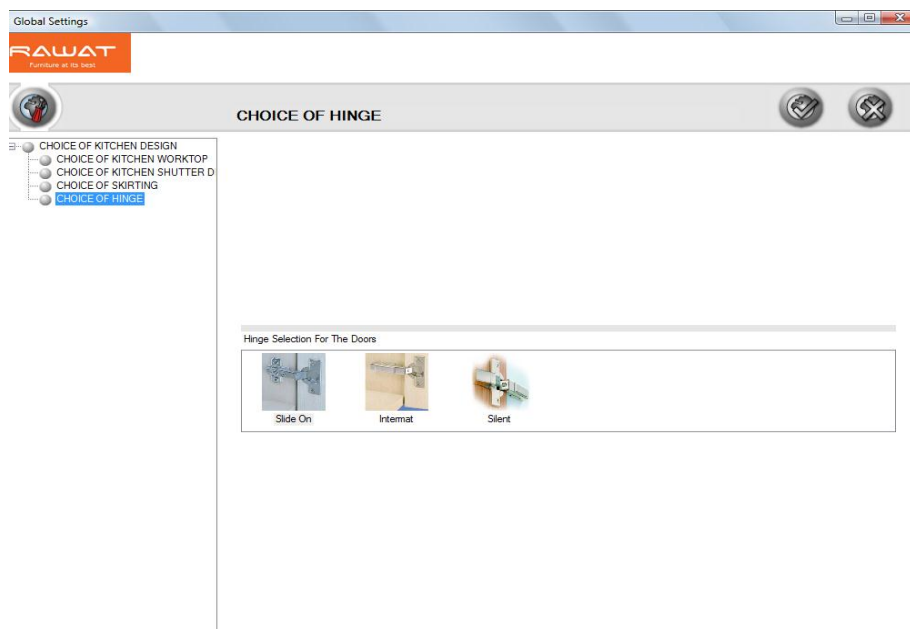
HERE YOU SELECT AN OPTION OF WHETHER YOU WANT A SKIRTING FOR YOUR KITCHEN AND IF YES THEN CHOOSE THE COLOR OF THE SKIRTING THAT YOU WANT.

- 1) IF YOU HAVE SELECTED TWO COLOR PALLETS THEN YOU HAVE TO CHOOSE EITHER THE FIRST OR THE SECOND COLOR FOR THE SKIRTING OF ALL THE ARTICLES. (HENCE YOU SHOULD REMEMBER WHICH COLOR YOU HAVE CHOSEN AS FIRST AND WHICH COLOR YOU HAVE CHOSEN AS SECOND.)
- 2) IF YOU HAVE SELECTED A SINGLE COLOR PALLET THEN BY DEFAULT THE COLOR THAT YOU HAVE SELECTED IS PASSED TO THE SKIRTING OF ALL ARTICLES.

NOTE- EVEN IF YOU SELECT THE OPTION YES HERE ,WHEN ASKED IF YOU WANT A SKIRTING OR NOT, WHEN YOU ARE SELECTING ARTICLES FROM THE CATALOG YOU HAVE TO MAKE SURE THAT YOU ARE SELECTING ARTICLES FROM THE WITH SKIRTING CATEGORY. IF YOU DO NOT DO SO THEN THE ARTICLES WILL NOT HAVE A SKIRTING.

D. HINGE SELECTION

NETSHOP USER MANUAL



HERE YOU HAVE TO SELECT THE TYPE OF HINGE THAT YOU WANT FOR THE ARTICLES.
THERE ARE 3 OPTIONS

- 1) **SLIDE ON HINGE**- GOOD IN FUNCTIONALITY AND COST EFFECTIVE.
- 2) **INTERMAT HINGE**- THESE ARE FAST ASSEMBLY HINGES, SMOOTHER IN OPERATION THAN THE SLIDE ON HINGES BUT ALSO HIGHER IN PRICE.
- 3) **SILENT HINGE**- HERE YOU GET THE INTERMAT HINGES ALONG WITH BUFFER FOR SOFT CLOSING EFFECT. THIS ALSO IS A SLIGHTLY COSTLY OPTION.

THESE GLOBAL SETTINGS ARE CONFIRMED AND THE DIALOGUE IS CLOSED VIA A CLICK

ON THE BUTTON WITH THE GREEN CHECK MARK IN THE RIGHT TOP CORNER.



II. ARTICLE CONFIGURATION AND INSERTION

BEFORE WE START WITH DESIGNING OF THE KITCHEN IN THE NETSHOP IT IS IMPORTANT THAT YOU PLAN THE KITCHEN AS PER YOUR NEEDS. FOR THIS YOU SHALL REFER TO THE KITCHEN PLANNING DOCUMENT THAT IS AVAILABLE ON OUR WEBSITE.

ONCE YOU ARE RADY WITH THE PLAN AND DESIGN OF YUR KITCHEN YOU CAN START WITH THE ROOM PLANNER AND THE MOVE TO THE ARTICLE SHOP.
IN THE ARTICLE SHOP WE HAVE MADE THE BELOW MENTIONED CATEGORIES

- 1) BASE UNITS
- 2) OVERHEAD UNITS
- 3) SEMI TALL UNITS

NETSHOP USER MANUAL

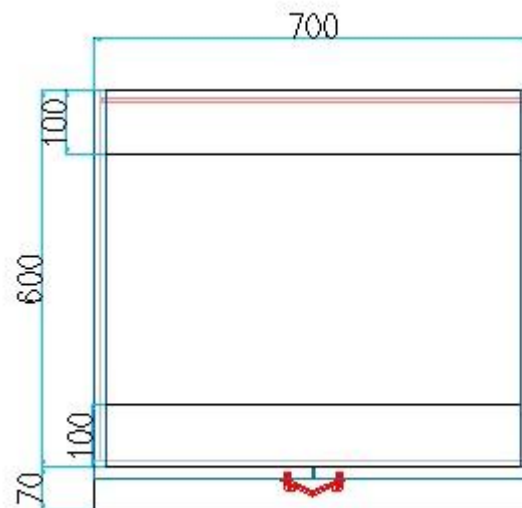
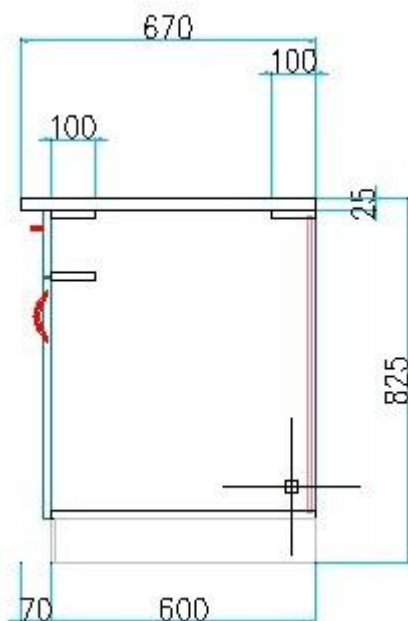
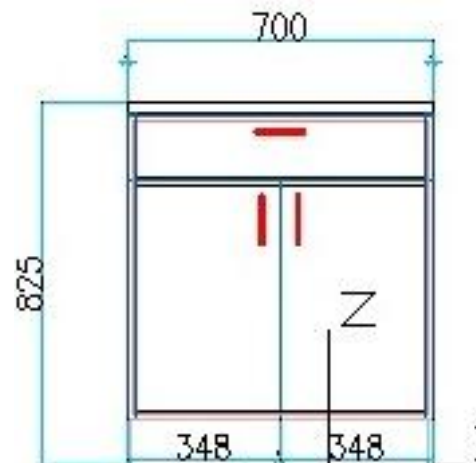
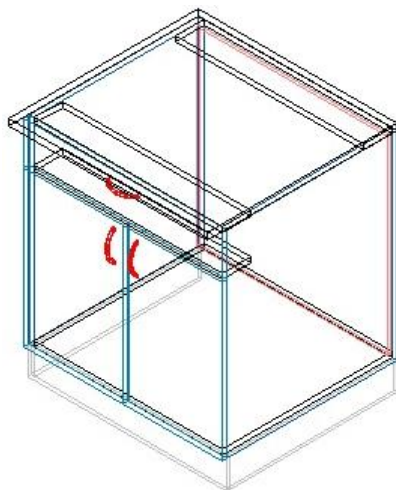
4) TALL UNITS

5) ISLAND UNITS

EACH OF THESE HAVE A SET CONSTRUCTION PATTERN WHICH WE WILL LOOK INTO DETAIL.

CONSTRUCTION PRINCIPLE

THE BASE UNITS ARE THE ARTICLES WHICH WILL HELP FORM THE KITCHEN PLATFORM. THEY COME WITH THE WORKTOP AS THEIR TOP. THE CONSTRUCTION IS AS EXPLAINED BELOW.



- 1) AS YOU CAN SEE FROM ABOVE CONSTRUCTION DRAWINGS THE BASE UNIT IS AN INDEPENDENT ARTICLE WHICH CONSTITUTES OF 2 SIDES, BOTTOM PANEL, 2 TOP

NETSHOP USER MANUAL

RAILINGS, A BACK PANEL AND A WORKTOP. THESE FORM THE CARCSE OF THE BASE UNITS WITH ANY OTHER SUPPORTING ELEMENTS, IF ANY. THE CONSTRUCTION OF THE BACK IS GROOVED AND IT SLIDES INT THE SIDES.

- 2) THE TOTAL HEIGHT OF THE ARTICLE IS AS FOLLOWS= HEIGHT OF LEGS (SKIRTING) + HEIGHT OF CARCSE SIDE(700MM)+ THICKNESS OF TOP SELECTED.AS THERE IS OPTION OF 100MM OR 150MM FOR LEG HEIGHT AND 25MM OR 36MM FOR TOP THICKNESS,WE GET THE FOLLOWING HEIGHT OPTIONS- 825MM,836MM,875MM & 886MM.
- 3) THERE ARE 2 DEPTH OPTIONS AVAILABLE- 600MM AND 450MM. THIS IS THE CARCSE DEPTH WHICH DOES NOT INCLUDE THE SHUTTERS.THE WORKTOP HAS AN OVERHANG OF 70MM OVER THE CARCSE.
- 4) THE ARTICLES ARE AVAILABLE IN DIFFERENT WIDTHS FROM WHICH YOU CAN CHOOSE.

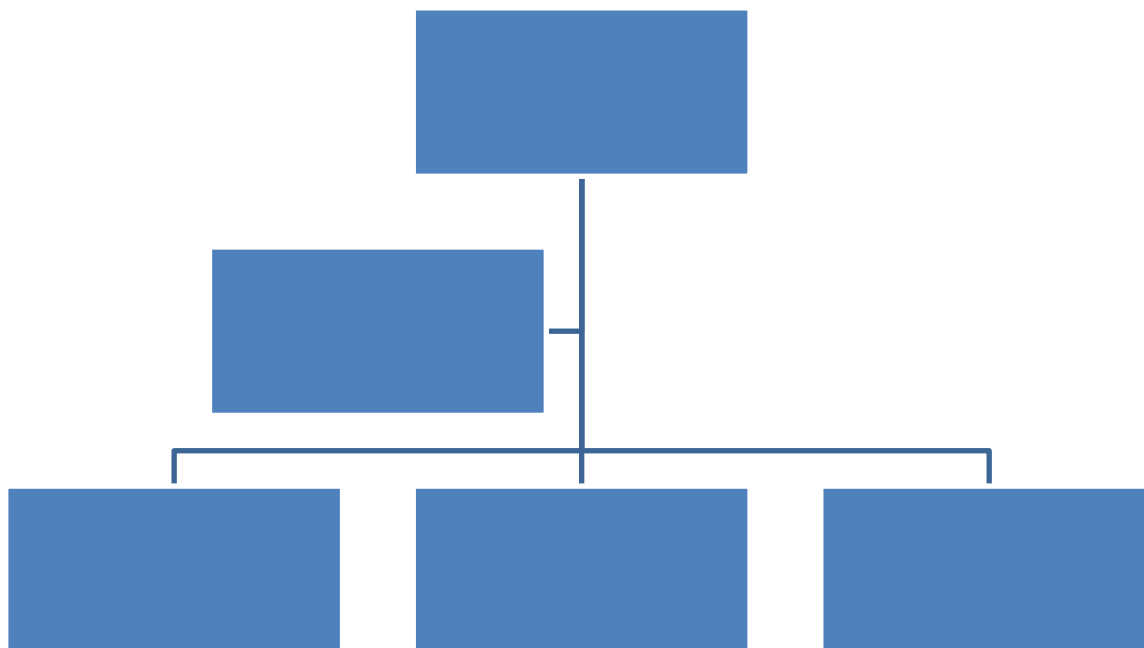
MATERIAL

FOR THE CARCSE OF THE BASE UNITS WE HAVE THE BELOW OPTIONS

- A) WHITE PRE-LAMINATED EXTERIOR GRADE MDF IN 18MM THICKNESS AND THE BACK PANEL IS IN 8MM.
- B) BWR GRADE PLY IN 16MM WITH WHITE BALANCING LAMINATE ON BOTH SIDES AND THERE IS A BACK IS IN 2.5MM THICK COMPACT LAMINATE.
- C) THE SHUTTER MATERIAL WILL BE AS PER THE CHOICE MADE BY YOU DURING THE GLOBAL SETTINGS.
- D) THE SKIRTING IS IN PVC MATERIAL EITHER BLACK OR SILVER AS PER CHOICE IN GLOBAL SETTINGS. ALSO NOTE THAT ONLY IF THE LEFT OR RIGHT SIDE IS CHOSEN TO BE VISIBLE THEN THERE WILL BE A SKIRTING ALONG THE SIDE DEPTH AS WELL, OTHERWISE IT'S ONLY ALONG FRONTS.

NETSHOP USER MANUAL

CATEGORIES



FOR INDIAN BASE UNITS THE FOLLOWING OPTIONS ARE AVAILABLE

1) FOR ALL SHUTTERS YOU GET SLIDE ON HINGES BY DEFAULT. DOOR BUMPERS ARE PROVIDED.

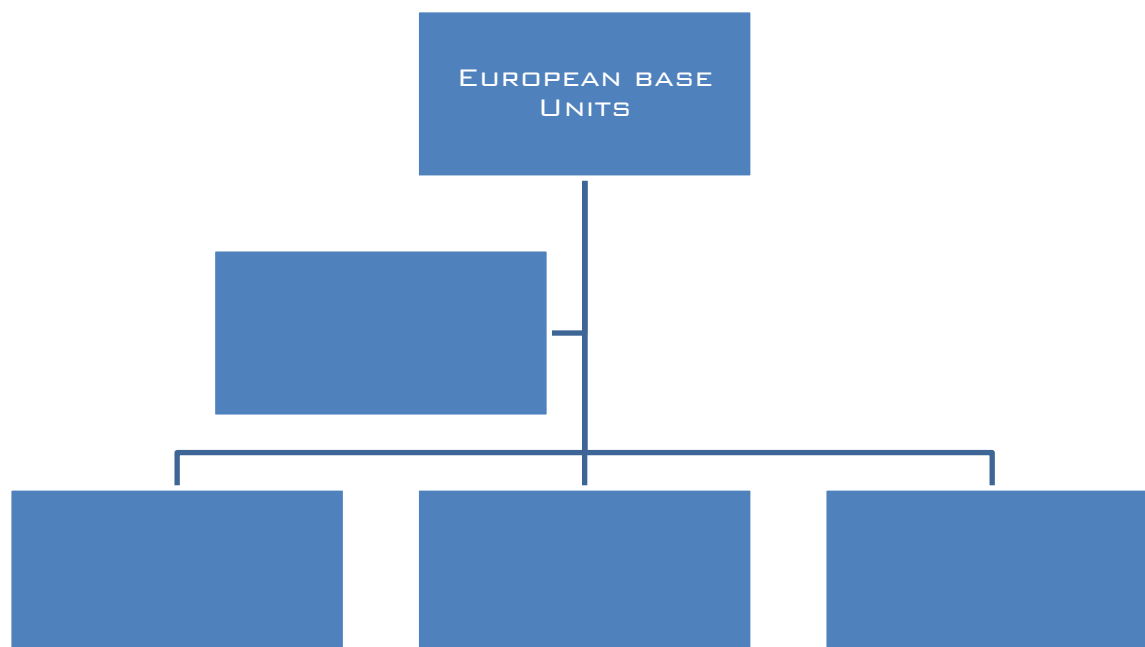
2) FOR DRAWERS YOU GET BELOW OPTIONS-

SS BASKETS- PLAIN BASKET HT 100MM, PLAIN BASKET HT 200MM, CUTLERY BASKET, CUP SAUCER BASKET, THALI BASKET. THESE BASKETS ARE MOUNTED ON TELESCOPIC CHANNELS.

MUTITECH DRAWER SYSTEMS- HEIGHT 86MM, HEIGHT 118MM, HEIGHT 150MM, HEIGHT 118MM WITH RAILINGS.

3) IN CASE OF CORNER UNITS THE ACCESSORIES ARE FROM LOCAL MANUFACTURER LIKE THE D -TRAY AND THE THREE QUARTER CAROUSEL.

NETSHOP USER MANUAL



FOR EUROPEAN BASE UNITS THE FOLLOWING OPTIONS ARE AVAILABLE-

1) ALL SHUTTERS COME WITH INTERMIT HINGES ALONG WITH DOOR BUFFERS (DAMPNES) WHICH GIVE THE SOFT CLOSING EFFECT.

2) FOR DRAWERS THE BELOW OPTIONS ARE AVAILABLE

SS BASKETS- PLAIN BASKET HT 100MM, PLAIN BASKET HT 200MM, CUTLERY BASKET, CUP SAUCER BASKET, THALI BASKET. THESE BASKETS ARE MOUNTED ON INNOTECH OR POT & PAN DRAWER SYSTEMS



INNOTECH DRAWER SYSTEMS- INNOTECH HT 76MM, INNOTECH POT & PAN HT 144MM WITH RAILING. IN THESE DRAWERS YOU ALSO GET TO CHOOSE FROM AMONG SOME INTERNAL INNOTECH ORGANIZATION ACCESSORIES.

3) THE CORNER UNIT ACCESSORIES ARE OF EUROPEAN MAKE- SUCH AS D-TRAY, THREE QUARTER CAROUSEL, LEMANS ETC

NETSHOP USER MANUAL

UNIT SPECIFICATIONS FOR BASE UNITS

Article configurator



 

Select The Unit Specifications 2Drawers unit with Mutitech ht150mm 2Nos

Select The Unit Specifications

Do you want to continue with Globle setting? Yes

Drawer Design

Top:Mutitech 150 Bottom:Mutitech 150

Which Sides Are Visible?

Left Side ☐

Right Side ☐

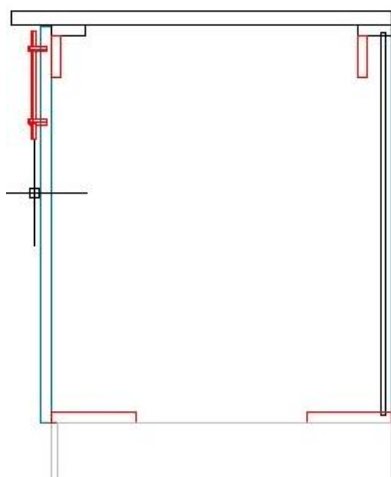
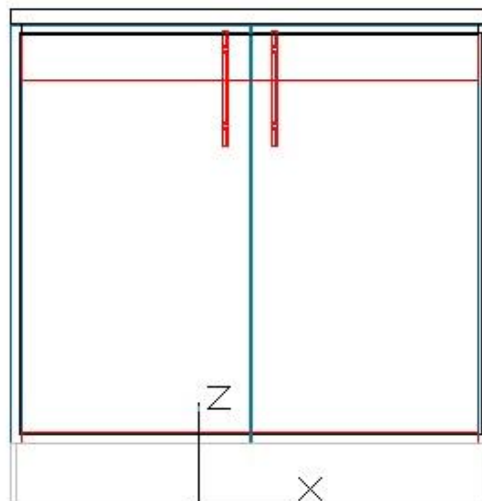
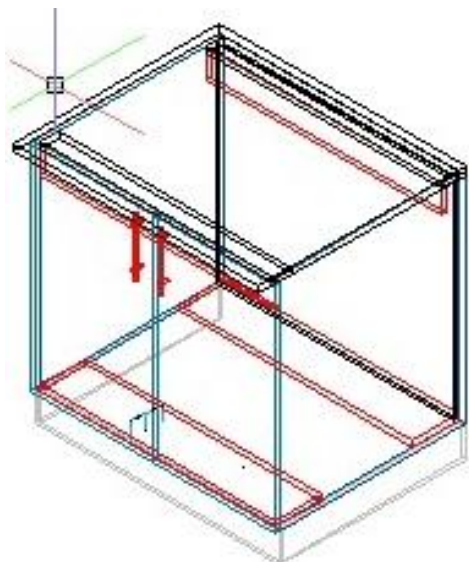
- 1) WHEN YOU OPEN THE ARTICLE CONFIGURATOR WINDOW YOU ARE ASKED IF YOU WANT TO CONTINUE WITH THE GLOBAL SETTINGS. IF YOU SELECT YES THEN OPTIONS SLECTED IN GLOBAL SETTINGS WILL BE CONTINUED. IF YOU SELECT NO THEN YOU WILL BE ASKED TO MAKE THE SELECTIONS AGAIN, IN SHORT YOU CAN OVER RITE THE GLOBAL SETTINGS HERE.
- 2) IN THE ARTICLE CNFIGURATOR THE DETAILS OF DRAWERS SYSTEMS OR ACCESSORIES THAT ARE A PART OF THE ARTICLE CONFIGURATION WILL ALSO BE DISPLAYED.
- 3) YOU ARE ALSO ASKED TO SELECT IF YOU WANT THE LEFT OR RIGHT SIDE OF THE ARTICLE VISIBLE.

SO YOU GO ON INSERTING THE BASE ARTICLES ONE AFTER THE OTHER AS PER YOUR KITCHEN PLAN TO FORM THE BASE BELOW THE PLATFORM FOR YOUR KITCHEN.

NETSHOP USER MANUAL

ARTICLES WITH PECULIAR CHARACTERISTICS

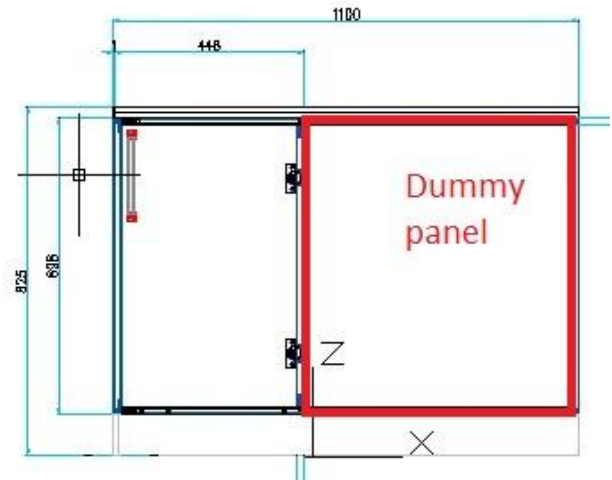
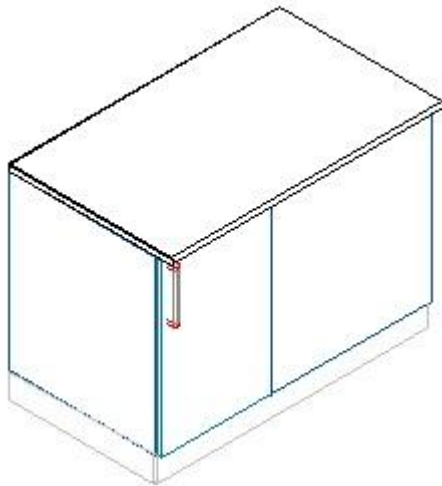
A) SINK UNITS



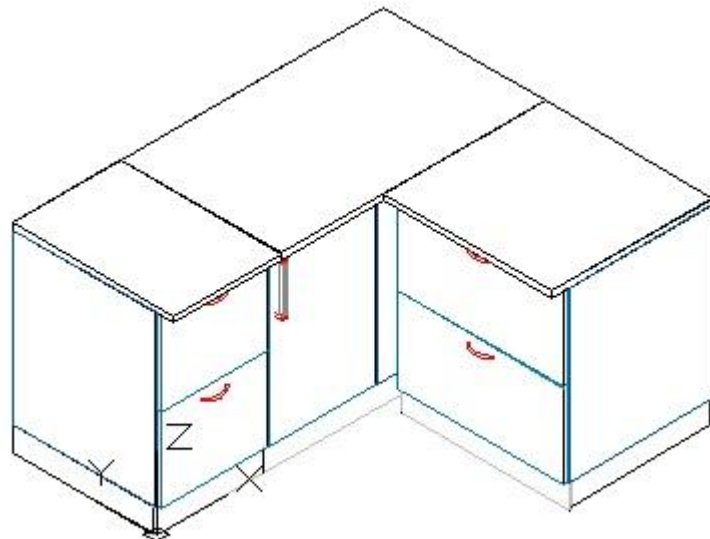
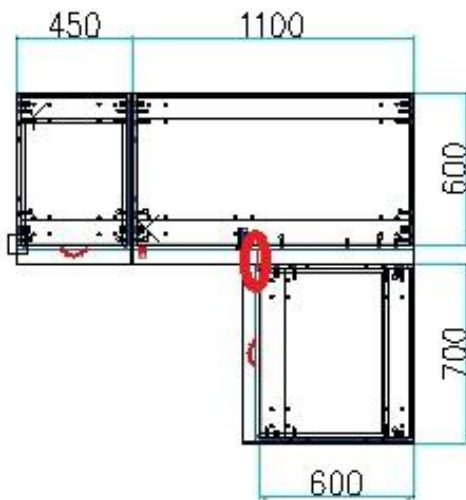
- AS YOU CAN SEE IN ABOVE IMAGES THE SINK UNITS HAVE A DISTINCT CONSTRUCTION. TO ALLOW THE SINK PIPE AN OUTLET INSTEAD OF THE COMPLETE BOTTOM PANEL THE UNIT HAS TWO BOTTOM PATTY'S OF 150MM DEEP ON WHICH THE PVC LEGS ARE MOUNTED.
- ALSO AS THE SINK GETS MOUNTED ON THE WORKTOP OF THIS ARTICLE ADDITIONAL SUPPORT PATTY'S ARE PROVIDED BELOW BOTH THE TOP RAILS TO TAKE EXTRA WEIGHT.
- THESE ELEMENTS ARE HIGHLIGHTED IN ABOVE IMAGES IN RED.

NETSHOP USER MANUAL

B) STRAIGHT CORNER UNIT



- AS SEEN IN ABOVE IMAGES THE STRAIGHT CORNER UNIT HAS A DUMMY PANEL ON ONE SIDE. THE ONE SEEN IN THE IMAGES IS THE LEFT HAND SIDE STRAIGHT CORNER UNIT. IT HAS A DOOR WHICH IS RIGHT SIDE HINGED. IT IS PLACED IN THE ROOM AS SHOWN BELOW



- IT IS STRICTLY NECESSARY THAT A FILLER OF 50MM BE ADDED IN THE AREA HIGH LIGHTED BY RED ALWAYS.

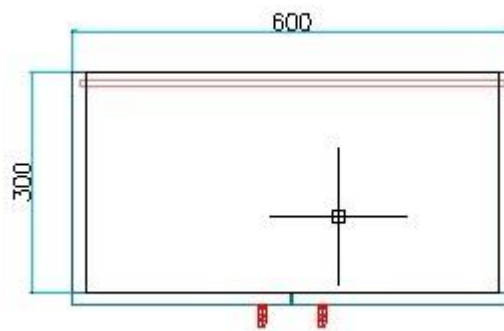
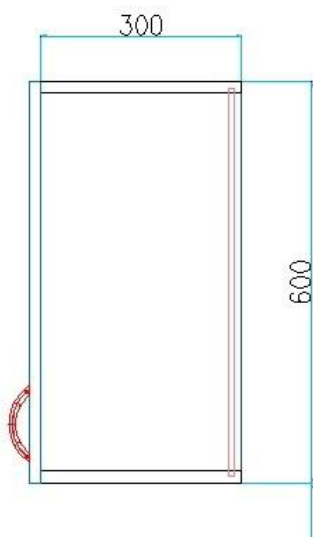
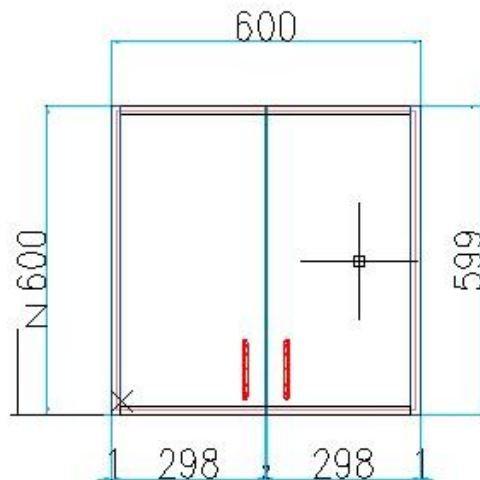
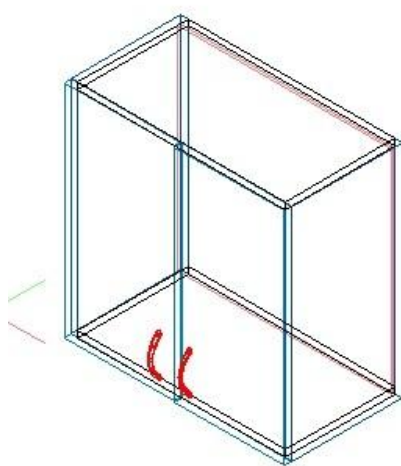
C) L CORNER UNIT

NETSHOP USER MANUAL

B. OVERHEAD UNITS

CONSTRUCTION PRINCIPLE

THE OVERHEAD UNITS ARE THE ARTICLES WHICH ARE USALLY MOUNTED ON THE WALLS.



NETSHOP USER MANUAL

AS YOU CAN SEE FROM ABOVE CONSTRUCTION DRAWINGS THE OVERHEAD UNIT IS AN INDEPENDENT ARTICLE WHICH CONSTITUTES OF 2 SIDES, BOTTOM PANEL, TOP PANEL AND BACK PANEL. THESE FORM THE CARCSE OF THE OVERHEAD UNITS WITH ANY OTHER SUPPORTING ELEMENTS, IF ANY. THE CONSTRUCTION OF THE BACK IS GROOVED AND IT SLIDES INTO THE SIDES.

- 1) THE HEIGHT OPTIONS AVAILABLE ARE 600MM FOR REGULAR DOOR UNITS AND 300MM, AND 450MM FOR FLAP DOOR UNITS. FOR UNIT WITH MICROWAVE SPACE THE HEIGHT IS 750MM.
- 2) THERE ARE 2 DEPTH OPTIONS AVAILABLE- 300MM AND 450MM. THIS IS THE CARCSE DEPTH WHICH DOES NOT INCLUDE THE SHUTTERS.
- 3) THE ARTICLES ARE AVAILABLE IN DIFFERENT WIDTHS FROM WHICH YOU CAN CHOOSE.

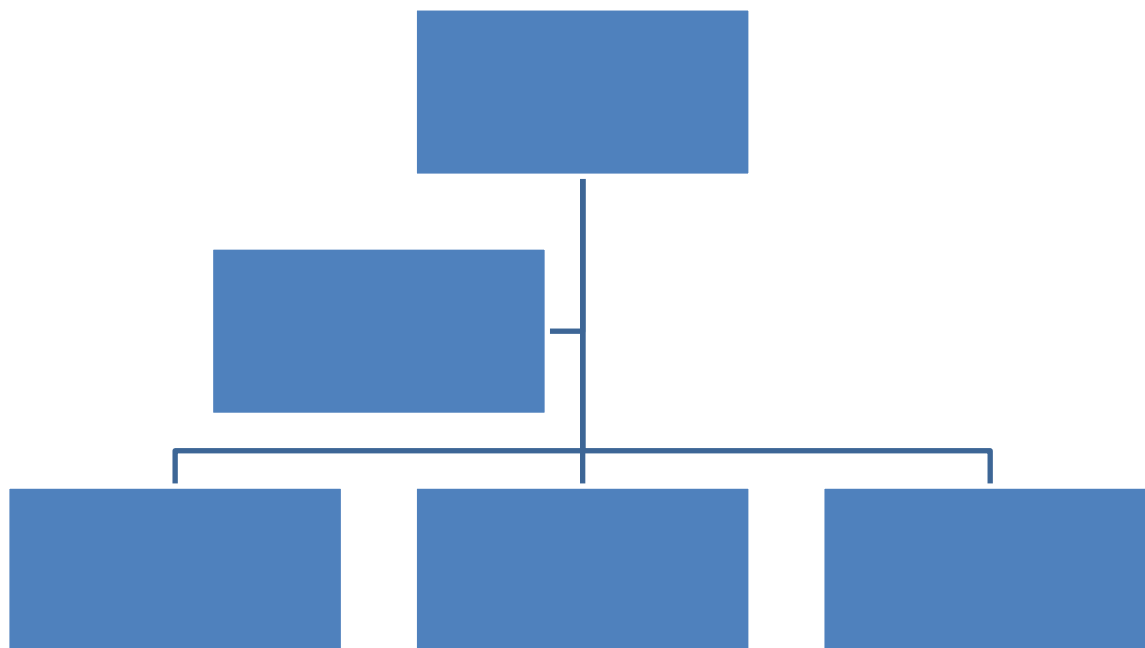
MATERIAL

FOR THE CARCSE OF THE OVERHEAD UNITS WE HAVE THE BELOW OPTIONS

- A) WHITE PRE-LAMINATED EXTERIOR GRADE MDF IN 18MM THICKNESS AND THE BACK PANEL IS IN 8MM.
- B) BWR GRADE PLY IN 16MM WITH WHITE BALANCING LAMINATE ON BOTH SIDES AND THERE IS A BACK IS IN 2.5MM THICK COMPACT LAMINATE.
- C) THE SHUTTER MATERIAL WILL BE AS PER THE CHOICE MADE BY YOU DURING THE GLOBAL SETTINGS.

NETSHOP USER MANUAL

CATEGORIES



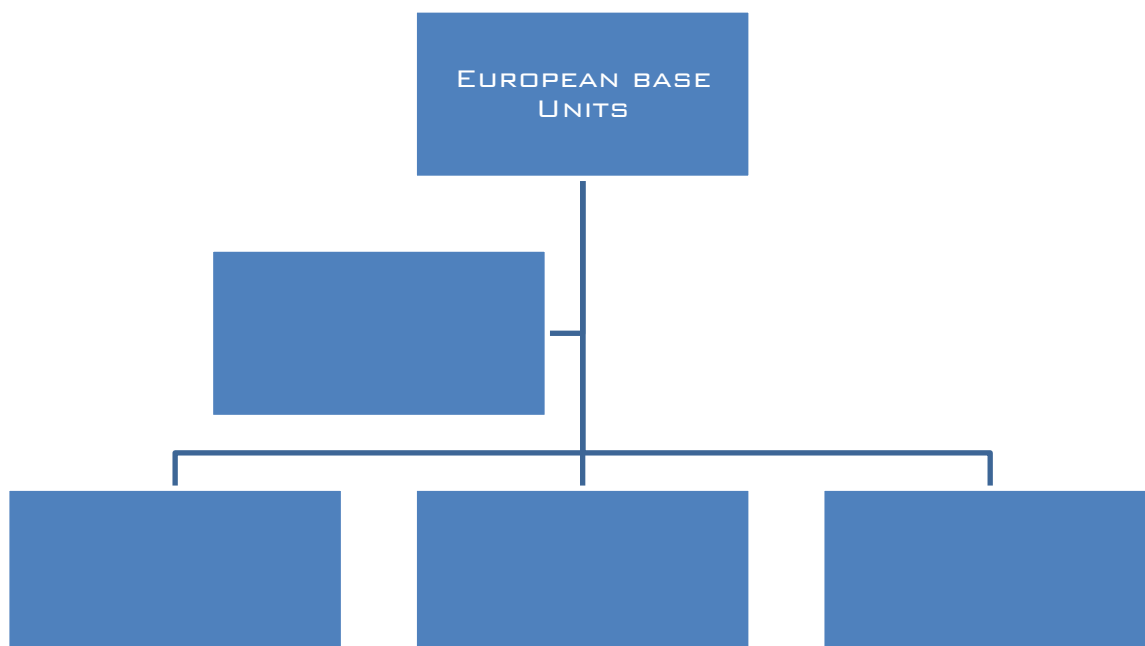
FOR OVERHEAD UNITS IN INDIAN CATEGORY

1) FOR ALL SHUTTERS YOU GET SLIDE ON HINGES BY DEFAULT. DOOR BUMPERS ARE PROVIDED.

2) FOR FLAP OPENING UNITS YOU WILL GET BELOW ACCESSORIES

GAS LIFT

LIFT 90

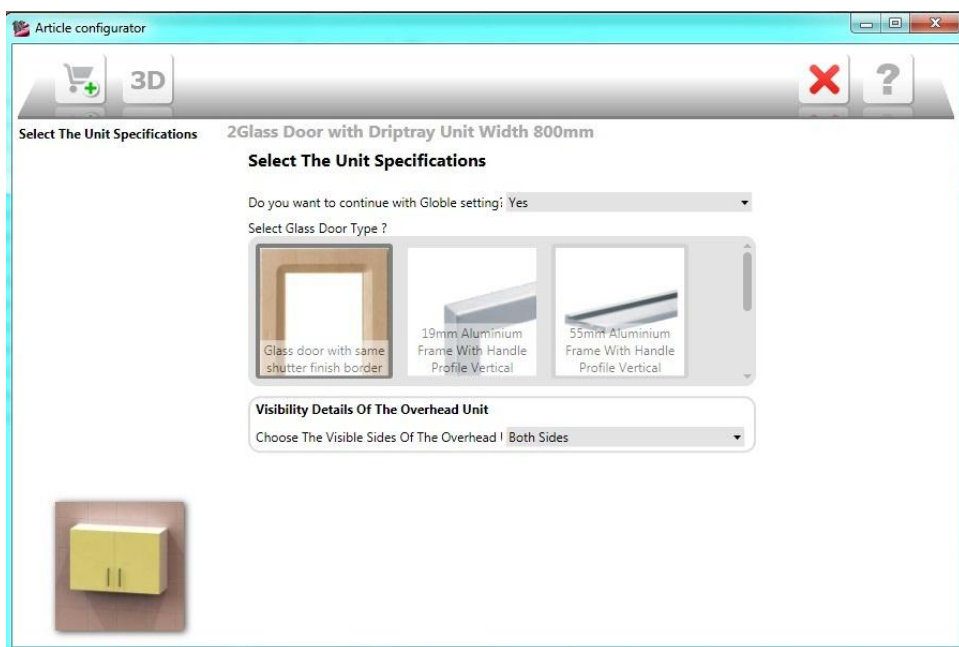


FOR EUROPEAN EUROPEAN UNITS THE FOLLOWING OPTIONS ARE AVAILABLE-

NETSHOP USER MANUAL

- 1) ALL SHUTTERS COME WITH INTERMIT HINGES ALONG WITH DOOR BUFFERS (DAMPERS) WHICH GIVE THE SOFT CLOSING EFFECT.
- 2) FOR FLAP DOOR UNITS THE BELOW FITTING OPTIONS WILL BE AVAILABLE. ALL OF WHICH ARE SOFT CLOSING OPTIONS.
 - LIFT ADVANCE HF- FOLDING FLAP FITTING
 - LIFT ADVANCE HK
 - LIFT ADVANCE HL
 - LIFT ADVANCE HS

UNIT SPECIFICATIONS FOR OVERHEAD UNITS



- 1) WHEN YOU OPEN THE ARTICLE CONFIGURATOR WINDOW YOU ARE ASKED IF YOU WANT TO CONTINUE WITH THE GLOBAL SETTINGS. IF YOU SELECT YES THEN OPTIONS SLECTED IN GLOBAL SETTINGS WILL BE CONTINUED. IF YOU SELECT NO THEN YOU WILL BE ASKED TO MAKE THE SELECTIONS AGAIN, IN SHORT YOU CAN OVER RITE THE GLOBAL SETTINGS HERE.
- 2) IF YOU OPEN UNIT WITH GLASS DOOR OPTION THEN YOU ARE ASKED TO SELECT THE TYPE OF GLASS DOOR.
- 3) YOU ARE ALSO ASKED TO SELECT IF YOU WANT THE LEFT OR RIGHT SIDE OF THE ARTICLE VISIBLE.

THIS WAY YOU GO ON SELECTING ARTICLES TO INSERT IN THE ROOM.

ARTICLES WITH PECULIAR CHARACTERISTICS

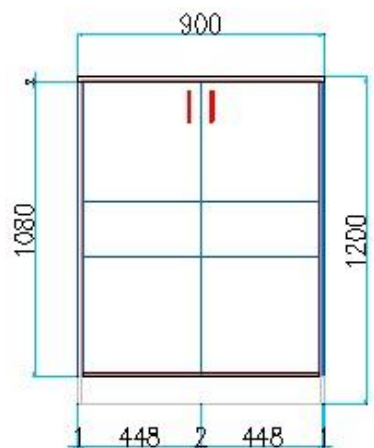
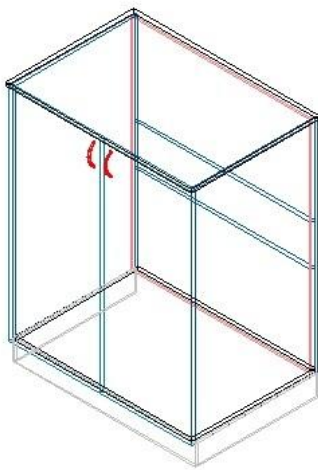
NETSHOP USER MANUAL

- A) AQUAGUARD UNIT
- B) DRIP TRAY UNIT
- C) FLAP DOOR UNIT
- D) FOLDING FLAP UNIT

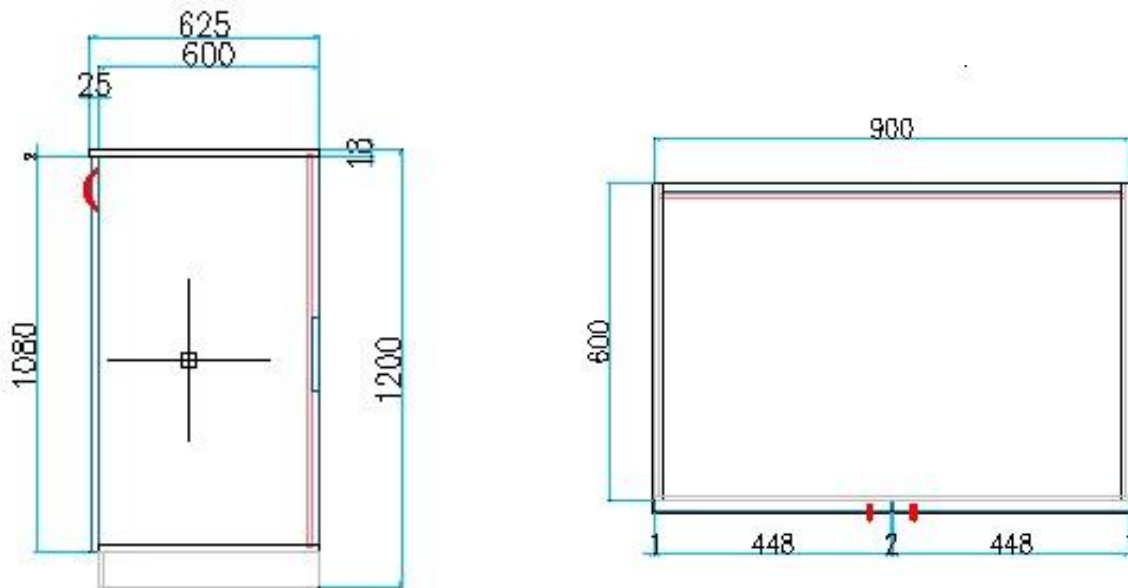
C. SEMI TALL UNITS

CONSTRUCTION PRINCIPLE

THE SEMI TALL UNITS ARE THE ARTICLES WHICH ARE KEPT ALONGSIDE THE BASE UNITS TO OFFER A VARIATION IN HEIGHTS. THE CONSTRUCTION IS AS EXPLAINED BELOW.



NETSHOP USER MANUAL



- 5) AS YOU CAN SEE FROM ABOVE CONSTRUCTION DRAWINGS THE SEMI TALL UNIT IS AN INDEPENDENT ARTICLE WHICH CONSTITUTES OF 2 SIDES, BOTTOM PANEL, TOP PANEL AND A BACK PANEL . THESE FORM THE CARCSE OF THE SEMI TALL UNITS WITH ANY OTHER SUPPORTING ELEMENTS, IF ANY. THE CONSTRUCTION OF THE BACK IS GROOVED AND IT SLIDES INTO THE SIDES.
- 6) THE TOTAL HEIGHT OF THE ARTICLE IS AS FOLLOWS= HEIGHT OF LEGS (SKIRTING) + HEIGHT OF CARCSE SIDE(1082MM)+ THICKNESS OF TOP.AS THERE IS OPTION OF 100MM OR 150MM FOR LEG HEIGHT AND TOP THICKNESS IS 18MM BY DEAFULT,WE GET THE FOLLOWING HEIGHT OPTIONS- 1200 & 1250MM.
- 7) THERE ARE 2 DEPTH OPTIONS AVAILABLE- 600MM AND 450MM. THIS IS THE CARCSE DEPTH WHICH DOES NOT INCLUDE THE SHUTTERS.THE WORKTOP HAS AN OVERHANG OF 25MM OVER THE CARCSE.
- 8) THE ARTICLES ARE AVAILABLE IN DIFFERENT WIDTHS FROM WHICH YOU CAN CHOOSE.

MATERIAL

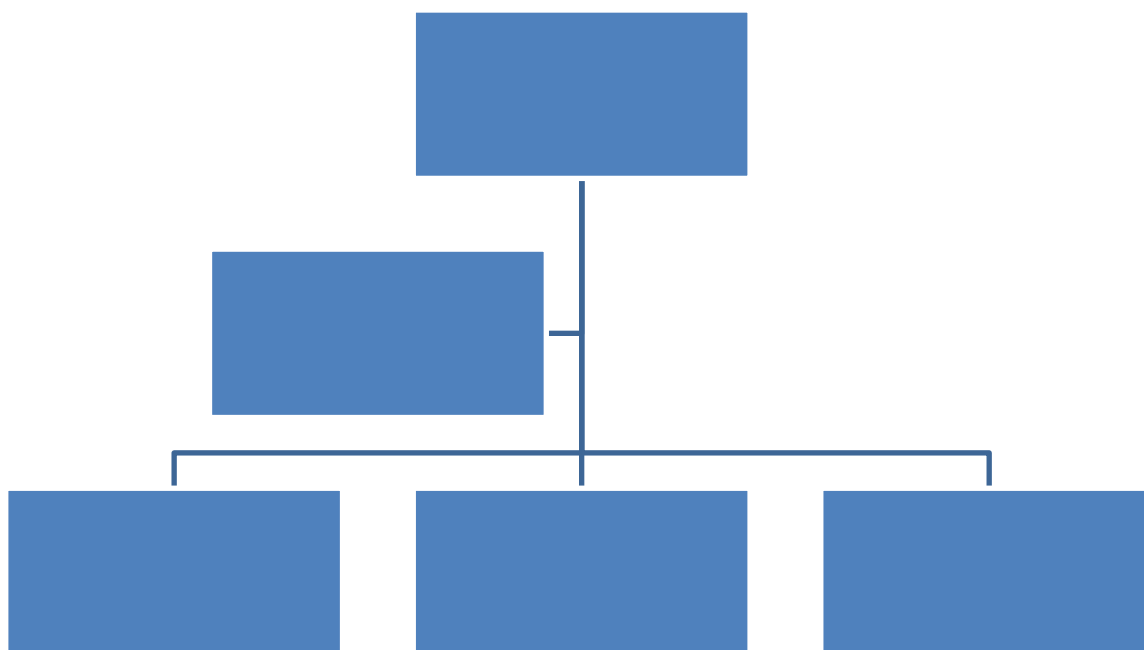
FOR THE CARCSE OF THE SEMI TALL UNITS WE HAVE THE BELOW OPTIONS

- E) WHITE PRE-LAMINATED EXTERIOR GRADE MDF IN 18MM THICKNESS AND THE BACK PANEL IS IN 8MM.
- F) BWR GRADE PLY IN 16MM WITH WHITE BALANCING LAMINATE ON BOTH SIDES AND THERE IS A BACK IS IN 2.5MM THICK COMPACT LAMINATE.
- G) THE SHUTTER MATERIAL WILL BE AS PER THE CHOICE MADE BY YOU DURING THE GLOBAL SETTINGS.
- H) THE SKIRTING IS IN PVC MATERIAL EITHER BLACK OR SILVER AS PER CHOICE IN GLOBAL SETTINGS. ALSO NOTE THAT ONLY IF THE LEFT OR RIGHT SIDE IS CHOSEN

NETSHOP USER MANUAL

TO BE VISIBLE THEN THERE WILL BE A SKIRTING ALONG THE SIDE DEPTH AS WELL,
OTHERWISE IT'S ONLY ALONG FRONTS.

CATEGORIES



FOR INDIAN SEMI TALL UNITS THE FOLLOWING OPTIONS ARE AVAILABLE

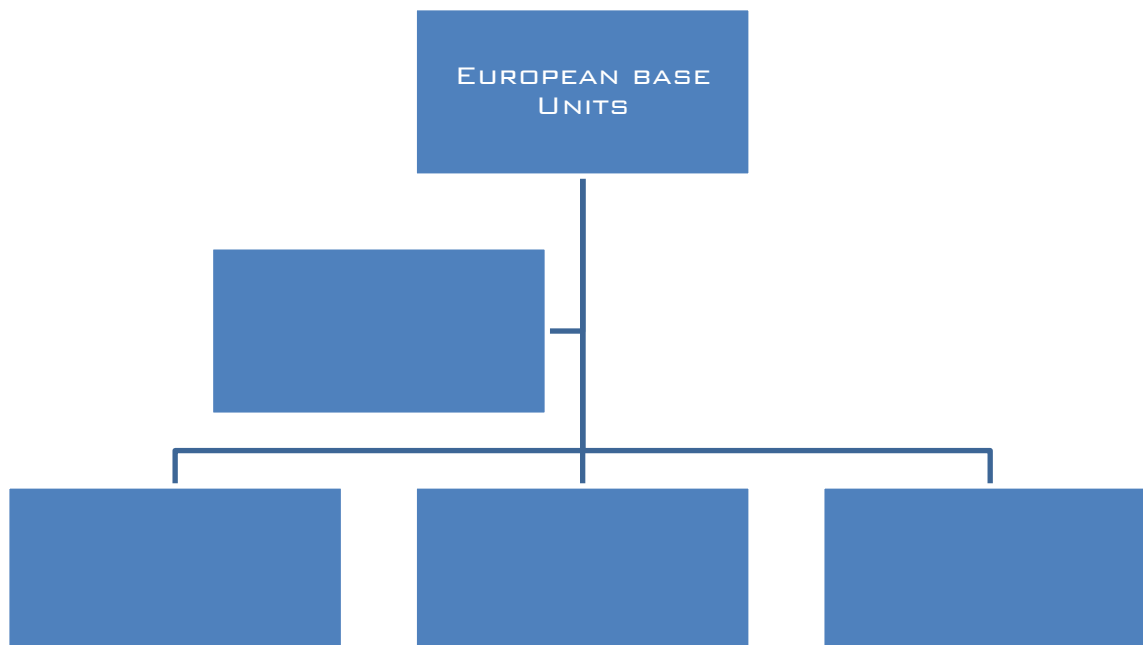
1) FOR ALL SHUTTERS YOU GET SLIDE ON HINGES BY DEFAULT. DOOR BUMPERS ARE PROVIDED.

4) FOR DRAWERS YOU GET BELOW OPTIONS-

SS BASKETS- PLAIN BASKET HT 100MM, PLAIN BASKET HT 200MM,CUTLERY BASKET, CUP SAUCER BASKET, THALI BASKET. THESE BASKETS ARE MOUNTED ON TELESCOPIC CHANNELS.

MUTITECH DRAWER SYSTEMS- HEIGHT 86MM, HEIGHT 118MM, HEIGHT 150MM, HEIGHT 118MM WITH RAILINGS.

NETSHOP USER MANUAL



FOR EUROPEAN SEMI TALL UNITS THE FOLLOWING OPTIONS ARE AVAILABLE-

4) ALL SHUTTERS COME WITH INTERMIT HINGES ALONG WITH DOOR BUFFERS (DAMPNES) WHICH GIVE THE SOFT CLOSING EFFECT.

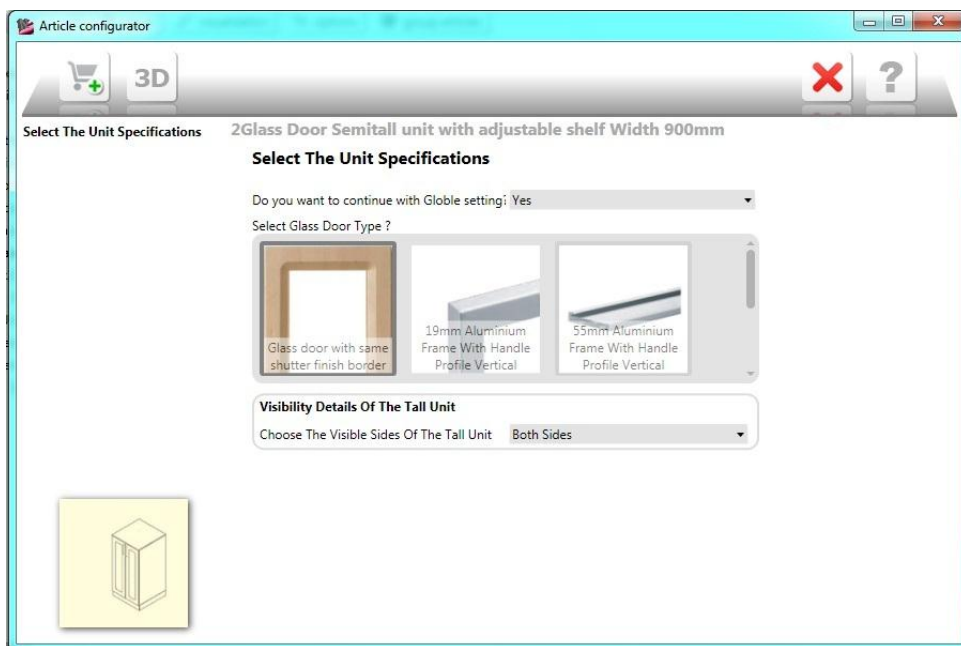
5) FOR DRAWERS THE BELOW OPTIONS ARE AVAILABLE

SS BASKETS- PLAIN BASKET HT 100MM, PLAIN BASKET HT 200MM, CUTLERY BASKET, CUP SAUCER BASKET, THALI BASKET. THESE BASKETS ARE MOUNTED ON INNOTECH OR POT & PAN DRAWER SYSTEMS

INNOTECH DRAWER SYSTEMS- INNOTECH HT 76MM, INNOTECH POT & PAN HT 144MM WITH RAILING. IN THESE DRAWERS YOU ALSO GET TO CHOOSE FROM AMONG SOME INTERNAL INNOTECH ORGANIZATION ACCESSORIES.

NETSHOP USER MANUAL

UNIT SPECIFICATIONS FOR SEMI TALL UNITS



- 1) WHEN YOU OPEN THE ARTICLE CONFIGURATOR WINDOW YOU ARE ASKED IF YOU WANT TO CONTINUE WITH THE GLOBAL SETTINGS. IF YOU SELECT YES THEN OPTIONS SLECTED IN GLOBAL SETTINGS WILL BE CONTINUED. IF YOU SELECT NO THEN YOU WILL BE ASKED TO MAKE THE SELECTIONS AGAIN, IN SHORT YOU CAN OVER RITE THE GLOBAL SETTINGS HERE.
- 2) IF YOU HAVE SELECTED UNIT WITH GLASS DOORS THEN YOU WILL BE ASKED TO SELECT THE TYPE OF GLASS DOORS THAT YOU WANT.
- 3) YOU ARE ALSO ASKED TO SELECT IF YOU WANT THE LEFT OR RIGHT SIDE OF THE ARTICLE VISIBLE.

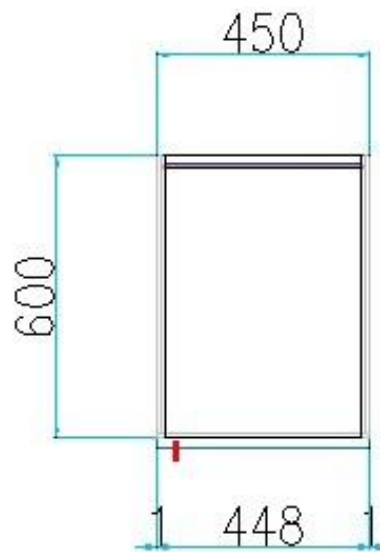
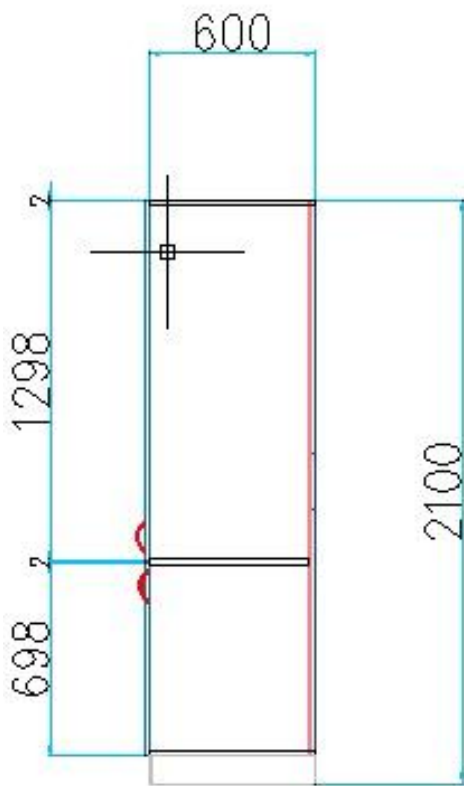
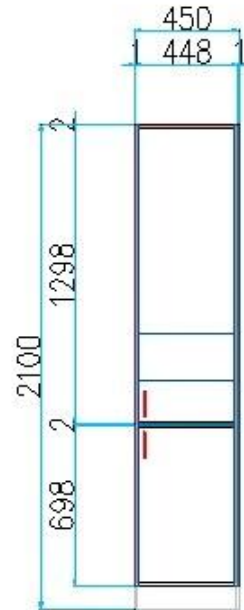
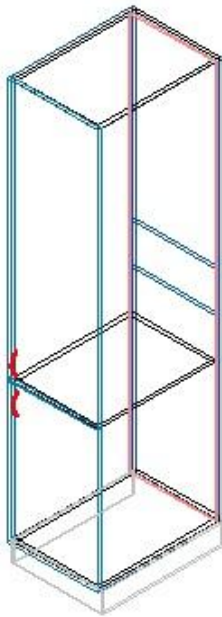
THE SEMI TALL UNITS CAN THUS BE CONFIGURED AND ADDED.

D. TALL UNITS

CONSTRUCTION PRINCIPLE

THE SEMI TALL UNITS ARE THE ARTICLES WHICH ARE KEPT ALONGSIDE THE BASE UNITS TO OFFER A VARIATION IN HEIGHTS. THE CONSTRUCTION IS AS EXPLAINED BELOW.

NETSHOP USER MANUAL



- 1) AS YOU CAN SEE FROM ABOVE CONSTRUCTION DRAWINGS THE TALL UNIT IS AN INDEPENDENT ARTICLE WHICH CONSTITUTES OF 2 SIDES, BOTTOM PANEL, TOP PANEL AND A BACK PANEL . THESE FORM THE CARCSE OF THE SEMI TALL UNITS WITH ANY

NETSHOP USER MANUAL

OTHER SUPPORTING ELEMENTS, IF ANY. THE CONSTRUCTION OF THE BACK IS GROOVED AND IT SLIDES INTO THE SIDES.

- 2) THE TOTAL HEIGHT OF THE ARTICLE IS AS FOLLOWS= HEIGHT OF LEGS (SKIRTING) + HEIGHT OF CARCASE SIDE(2000MM).AS THERE IS OPTION OF 100MM OR 150MM FOR LEG HEIGHT,WE GET THE FOLLOWING HEIGHT OPTIONS- 2100 & 2150MM.
- 3) THERE ARE 2 DEPTH OPTIONS AVAILABLE- 600MM AND 450MM. THIS IS THE CARCASE DEPTH WHICH DOES NOT INCLUDE THE SHUTTERS. THE ARTICLES ARE AVAILABLE IN DIFFERENT WIDTHS FROM WHICH YOU CAN CHOOSE.

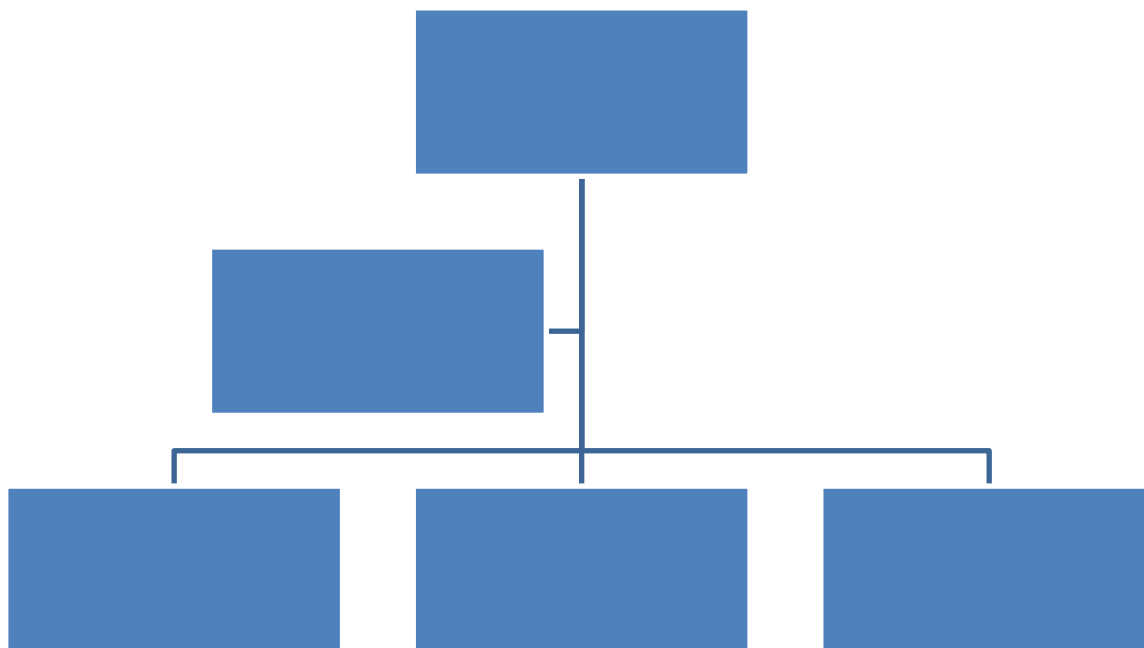
MATERIAL

FOR THE CARCASE OF THE TALL UNITS WE HAVE THE BELOW OPTIONS

- I) WHITE PRE-LAMINATED EXTERIOR GRADE MDF IN 18MM THICKNESS AND THE BACK PANEL IS IN 8MM.
- J) BWR GRADE PLY IN 16MM WITH WHITE BALANCING LAMINATE ON BOTH SIDES AND THERE IS A BACK IS IN 2.5MM THICK COMPACT LAMINATE.
- K) THE SHUTTER MATERIAL WILL BE AS PER THE CHOICE MADE BY YOU DURING THE GLOBAL SETTINGS.
- L) THE SKIRTING IS IN PVC MATERIAL EITHER BLACK OR SILVER AS PER CHOICE IN GLOBAL SETTINGS. ALSO NOTE THAT ONLY IF THE LEFT OR RIGHT SIDE IS CHOSEN TO BE VISIBLE THEN THERE WILL BE A SKIRTING ALONG THE SIDE DEPTH AS WELL, OTHERWISE IT'S ONLY ALONG FRONTS.

NETSHOP USER MANUAL

CATEGORIES



FOR INDIAN TALL UNITS THE FOLLOWING OPTIONS ARE AVAILABLE

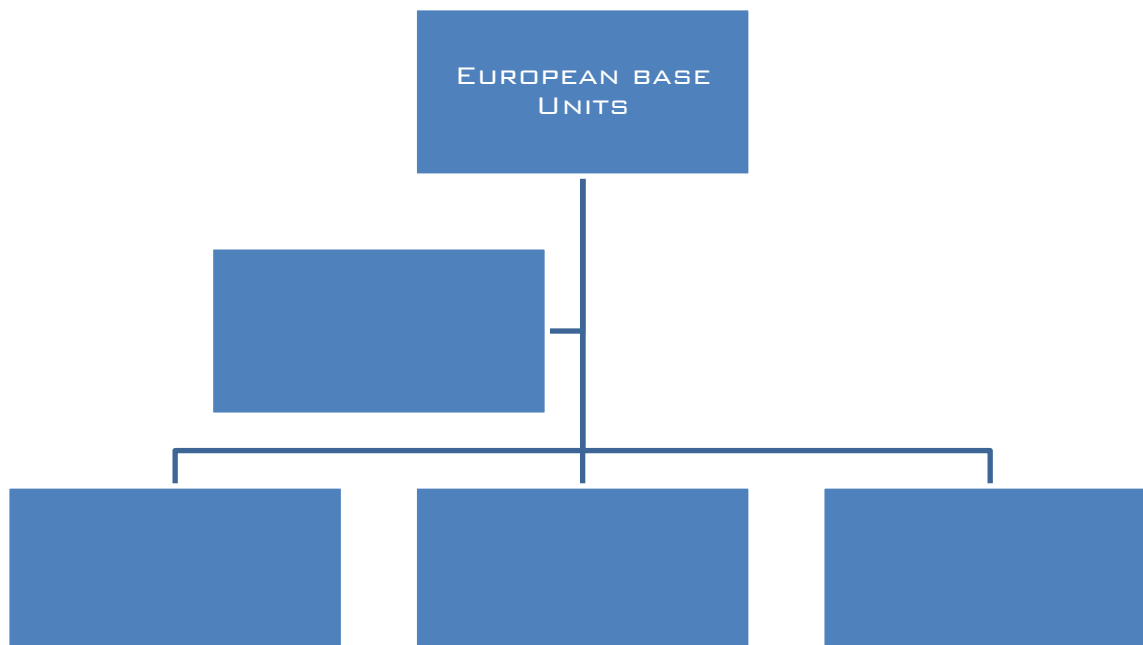
1) FOR ALL SHUTTERS YOU GET SLIDE ON HINGES BY DEFAULT. DOOR BUMPERS ARE PROVIDED.

2) FOR DRAWERS YOU GET BELOW OPTIONS-

SS BASKETS- PLAIN BASKET HT 100MM, PLAIN BASKET HT 200MM, CUTLERY BASKET, CUP SAUCER BASKET, THALI BASKET. THESE BASKETS ARE MOUNTED ON TELESCOPIC CHANNELS.

MUTITECH DRAWER SYSTEMS- HEIGHT 86MM, HEIGHT 118MM, HEIGHT 150MM, HEIGHT 118MM WITH RAILINGS.

NETSHOP USER MANUAL



FOR EUROPEAN SEMI TALL UNITS THE FOLLOWING OPTIONS ARE AVAILABLE-

1) ALL SHUTTERS COME WITH INTERMIT HINGES ALONG WITH DOOR BUFFERS (DAMPNES) WHICH GIVE THE SOFT CLOSING EFFECT.

2) FOR DRAWERS THE BELOW OPTIONS ARE AVAILABLE

SS BASKETS- PLAIN BASKET HT 100MM, PLAIN BASKET HT 200MM, CUTLERY BASKET, CUP SAUCER BASKET, THALI BASKET. THESE BASKETS ARE MOUNTED ON INNOTECH OR POT & PAN DRAWER SYSTEMS

INNOTECH DRAWER SYSTEMS- INNOTECH HT 76MM, INNOTECH POT & PAN HT 144MM WITH RAILING. IN THESE DRAWERS YOU ALSO GET TO CHOOSE FROM AMONG SOME INTERNAL INNOTECH ORGANIZATION ACCESSORIES.

NETSHOP USER MANUAL

UNIT SPECIFICATIONS FOR TALL UNITS



2 Single Glass Doors Tall with adjustable shelf Right Opening Unit Width 450mm,Dep

Select The Unit Specifications

Do you want to continue with Globle settin: Yes ▼

Select Glass Door Type ?



Visibility Details Of The Tall Unit

Choose The Visible Sides Of The Tall Unit Both Sides ▼

- 1) WHEN YOU OPEN THE ARTICLE CONFIGURATOR WINDOW YOU ARE ASKED IF YOU WANT TO CONTINUE WITH THE GLOBAL SETTINGS. IF YOU SELECT YES THEN OPTIONS SLECTED IN GLOBAL SETTINGS WILL BE CONTINUED. IF YOU SELECT NO THEN YOU WILL BE ASKED TO MAKE THE SELECTIONS AGAIN, IN SHORT YOU CAN OVER RITE THE GLOBAL SETTINGS HERE.
- 2) IF YOU HAVE SELECTED UNIT WITH GLASS DOORS THEN YOU WILL BE ASKED TO SELECT THE TYPE OF GLASS DOORS THAT YOU WANT.
- 3) YOU ARE ALSO ASKED TO SELECT IF YOU WANT THE LEFT OR RIGHT SIDE OF THE ARTICLE VISIBLE.

THE TALL UNITS CAN THUS BE CONFIGURED AND ADDED.

NETSHOP USER MANUAL

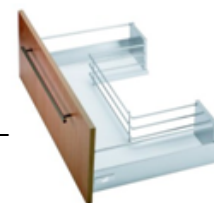
III. DRAWER AND ACCESSORY DETAILS

DRAWER ACCESSORIES	ARTICLE NUMBER	DEPTH	DRAWER TYPE
CUTLARY TRAY 900	44945	560-600	INNOTECH
CUTLARY TRAY 800	44946	560-600	INNOTECH
CUTLARY TRAY 600	44947	560-600	INNOTECH
RACK IN CUTLARY TRAY	74430	560-600	INNOTECH(IN NORMAL CUTLERY TRAY)
SPICE TRAY FOR CUTLARY TRAY	44934	560-600	INNOTECH(IN NORMAL CUTLERY TRAY)
PROFESSIONAL CUTLARY TRAY 600	13317	560-600	INNOTECH
PROFESSIONAL CUTLARY TRAY 800	13318	560-600	INNOTECH
PROFESSIONAL CUTLARY TRAY 900	13319	560-600	INNOTECH
WOODEN CUTLARY TRAY 600	46433	560-600	INNOTECH
WOODEN CUTLARY TRAY 800	46434	560-600	INNOTECH
WOODEN CUTLARY TRAY 900	46435	560-600	INNOTECH



NETSHOP USER MANUAL

UNIVERSAL ORGANIZER 600	48794	560-600	INNOTECH POT-N- PAN
UNIVERSAL ORGANIZER 800	49078	560-600	INNOTECH POT-N- PAN
UNIVERSAL ORGANIZER 900	49079	560-600	INNOTECH POT-N- PAN
GLASS STORAGEJAR 600	13295	560-600	INNOTECH POT-N- PAN
GLASS STORAGEJAR 800	13295	560-600	INNOTECH POT-N- PAN
GLASS STORAGEJAR 900	13295	560-600	INNOTECH POT-N- PAN
DRAWER ACCESSORIES	ARTICLE NUMBER	DEPTH	DRAWER TYPE
WOODEN ORGANIZER 600	46165	560-600	INNOTECH POT-N- PAN
WOODEN ORGANIZER 800	46166	560-600	INNOTECH POT-N- PAN
WOODEN ORGANIZER 900	46167	560-600	INNOTECH POT-N- PAN
PREASSAMBLLED UNDER SINK 900	43006	560-600	INNOTECH POT-N- PAN



NETSHOP USER MANUAL

PREASSAMBLED UND SINK WITH ST 800	49083	560-600	INNOTECH POT-N- PAN
PREASSAMBLED UND SINK WITH ST 600	49083	560-600	INNOTECH POT-N- PAN



STRAIGHT CORNER ACCESSORY	ARTICLE NUMBER	DEPTH	DOOR SIZE	HEIGHT WITHOUT SK	HEIGHT WITH SK
D TRAY	70549	550-600	450-580	765-851	765- 851
LEMANS CORNER RIGHT	40210	550-600	450-580	665-851	740- 851
LEMANS CORNER LEFT	40211	550-600	450-580	665-851	740- 851
SHELF		300-600	300- 580	665-851	720- 851

NETSHOP USER MANUAL

		Left Hand Straight Corner			

SS BASKET SOFTWARE			
DESCRIPTION	SIZE (MM)	REQUIRED DEPTH (MM)	INTERNAL UNIT WIDTH(MM)
PLAIN BASKET 4"	370 X 385 X 100	410	400
PLAIN BASKET 8"	370 X 385 X 200	410	400
CUP & SAUCER 4"	370 X 385 X 100	410	400
PERFORATED CUTLERY 4"	370 X 385 X 100	410	400
THALI / PLATE BASKET 6"	370 X 385 X 150	410	400
PLAIN BASKET 4"	370 X 485 X 100	530	400
PLAIN BASKET 8"	370 X 485 X 200	530	400
CUP & SAUCER 4"	370 X 485 X 100	530	400
PERFORATED CUTLERY 4"	370 X 485 X 100	530	400
THALI / PLATE BASKET 6"	370 X 485 X 150	530	400
PLAIN BASKET 4"	370 X 535 X100	560	400

NETSHOP USER MANUAL

PLAIN BASKET 8"	370 X 535 X 200	560	400
CUP & SAUCER 4"	370 X 535 X 100	560	400
PERFORATED CUTLERY 4"	370 X 535 X 100	560	400
THALI / PLATE BASKET 6"	370 X 535 X 150	560	400

SS BASKET SOFTWARE			
DESCRIPTION	SIZE (MM)	REQUIRED DEPTH	INTERNAL UNIT WIDTH
PLAIN BASKET 4"	420 X 485 X 100	530	450
PLAIN BASKET 8"	420 X 485 X 200	530	450
CUP & SAUCER 4"	420 X 485 X 100	530	450
PERFORATED CUTLERY 4"	420 X 485 X 100	530	450
THALI / PLATE BASKET 6"	420 X 485 X 150	530	450
PLAIN BASKET 4"	420 X 535 X 100	560	450
PLAIN BASKET 8"	420 X 535 X 200	560	450
CUP & SAUCER 4"	420 X 535 X 100	560	450
PERFORATED CUTLERY 4"	420 X 535 X 100	560	450
THALI / PLATE BASKET 6"	420 X 535 X 150	560	450
PLAIN BASKET 4"	470 X 485 X 100	530	500
PLAIN BASKET 8"	470 X 485 X 200	530	500
CUP & SAUCER 4"	470 X 485 X 100	530	500

NETSHOP USER MANUAL

PERFORATED CUTLERY 4"	470 X 485 X 100	530	500
THALI / PLATE BASKET 6"	470 X 485 X 150	530	500
PLAIN BASKET 4"	470 X 535 X 100	560	500
PLAIN BASKET 8"	470 X 535 X 200	560	500
CUP & SAUCER 4"	470 X 535 X 100	560	500
PERFORATED CUTLERY 4"	470 X 535 X 100	560	500
THALI / PLATE BASKET 6"	470 X 535 X 150	560	500
SS BASKET SOFTWARE			
DESCRIPTION	SIZE (MM)	REQUIRED DEPTH	INTERNAL UNIT WIDTH
PLAIN BASKET 4"	520 X 485 X 100	530	550
PLAIN BASKET 8"	520 X 485 X 200	530	550
CUP & SAUCER 4"	520 X 485 X 100	530	550
PERFORATED CUTLERY 4"	520 X 485 X 100	530	550
THALI / PLATE BASKET 6"	520 X 485 X 150	530	550
PLAIN BASKET 4"	520 X 535 X 100	560	550
PLAIN BASKET 8"	520 X 535 X 200	560	550
CUP & SAUCER 4"	520 X 535 X 100	560	550
PERFORATED CUTLERY 4"	520 X 535 X 100	560	550
THALI / PLATE BASKET 6"	520 X 535 X 150	560	550
M/P. SINGLE PULL OUT(DETACHABLE)	125 X 485 X 610	530	175<WIDTH<225
M/P. SINGLE PULL OUT(DETACHABLE)	175 X 485 X 610	530	226<WIDTH<275
M/P. SINGLE PULL OUT(DETACHABLE)	225 X 485 X 610	530	276<WIDTH<375

NETSHOP USER MANUAL

M/P. SINGLE PULL OUT(DETACHABLE)	125 x 535 x 610	560	175<WIDTH<225
M/P. SINGLE PULL OUT(DETACHABLE)	175 x 535 x 610	560	226<WIDTH<275
M/P. SINGLE PULL OUT(DETACHABLE)	225 x 535 x 610	560	276<WIDTH<375

SS BASKET SOFTWARE			
DESCRIPTION	SIZE (MM)	REQUIRED DEPTH	INTERNAL UNIT WIDTH
TWO SHELF PULL OUT (FIXED BASKET)	100 x 485 x 430	530	150<WIDTH<200
TWO SHELF PULL OUT (FIXED BASKET)	150 x 485 x 430	530	201<WIDTH<250
TWO SHELF PULL OUT (FIXED BASKET)	200 x 485 x 430	530	251<WIDTH<350
TWO SHELF PULL OUT (FIXED BASKET)	300 x 485 x 430	530	351<WIDTH<400
TWO SHELF PULL OUT (FIXED BASKET)	100 x 535 x 430	560	150<WIDTH<200
TWO SHELF PULL OUT (FIXED BASKET)	150 x 535 x 430	560	201<WIDTH<250
TWO SHELF PULL OUT (FIXED BASKET)	200 x 535 x 430	560	251<WIDTH<350
TWO SHELF PULL OUT (FIXED BASKET)	300 x 535 x 430	560	351<WIDTH<400
THREE SHELF PULL OUT (FIXED BASKET)	100 x 485 x 530	530	150<WIDTH<200
THREE SHELF PULL OUT (FIXED BASKET)	150 x 485 x 530	530	201<WIDTH<250
THREE SHELF PULL OUT (FIXED BASKET)	200 x 485 x 530	530	251<WIDTH<350
THREE SHELF PULL OUT (FIXED BASKET)	300 x 485 x 530	530	351<WIDTH<400
THREE SHELF PULL OUT (FIXED BASKET)	100 x 535 x 530	560	150<WIDTH<200

NETSHOP USER MANUAL

THREE SHELF PULL OUT (FIXED BASKET)	150 x 535 x 530	560	201 < WIDTH < 250
THREE SHELF PULL OUT (FIXED BASKET)	200 x 535 x 530	560	251 < WIDTH < 350
THREE SHELF PULL OUT (FIXED BASKET)	300 x 535 x 530	560	351 < WIDTH < 400
INNOTECH BASKETS			
PLAIN BASKET	793 X 530 X 100	560	564
PLATE/THALI BASKET	793 X 530 X 150	560	864

NETSHOP USER MANUAL