

Preface

Copyright

This publication, including all photographs, illustrations and software, is protected under international copyright laws, with all rights reserved. Neither this manual, nor any of the material contained herein, may be reproduced without written consent of the author.

Version 2.0

Disclaimer

The information in this document is subject to change without notice. The manufacturer makes no representations or warranties with respect to the contents hereof and specifically disclaims any implied warranties of merchantability or fitness for any particular purpose. The manufacturer reserves the right to revise this publication and to make changes from time to time in the content hereof without obligation of the manufacturer to notify any person of such revision or changes.

Trademark Recognition

Microsoft, MS-DOS and Windows are registered trademarks of Microsoft Corp.

MMX, Pentium, Pentium-II, Pentium-III, Celeron are registered trademarks of Intel Corporation.

Other product names used in this manual are the properties of their respective owners and are acknowledged.

Federal Communications Commission (FCC)

This equipment has been tested and found to comply with the limits for a Class B digital device, pursuant to Part 15 of the FCC Rules. These limits are designed to provide reasonable protection against harmful interference in a residential installation. This equipment generates, uses, and can radiate radio frequency energy and, if not installed and used in accordance with the instructions, may cause harmful interference to radio communications. However, there is no guarantee that interference will not occur in a particular installation. If this equipment does cause harmful interference to radio or television reception, which can be determined by turning the equipment off and on, the user is encouraged to try to correct the interference by one or more of the following measures:

- Reorient or relocate the receiving antenna
- Increase the separation between the equipment and the receiver
- Connect the equipment onto an outlet on a circuit different from that to which the receiver is connected
- Consult the dealer or an experienced radio/TV technician for help

Shielded interconnect cables and a shielded AC power cable must be employed with this equipment to ensure compliance with the pertinent RF emission limits governing this device. Changes or modifications not expressly approved by the system's manufacturer could void the user's authority to operate the equipment.

Preface

Declaration of Conformity

This device complies with part 15 of the FCC rules. Operation is subject to the following conditions:

- This device may not cause harmful interference, and
- This device must accept any interference received, including interference that may cause undesired operation

Canadian Department of Communications

This class B digital apparatus meets all requirements of the Canadian Interference-causing Equipment Regulations.

Cet appareil numérique de la classe B respecte toutes les exigences du Règlement sur le matériel brouilleur du Canada.

About the Manual

The manual consists of the following:

| | |
|---|--|
| Chapter 1 Introducing the Motherboard | Describes features of the motherboard. Go to ➞ page 1 |
| Chapter 2 Installing the Motherboard | Describes installation of motherboard components. Go to ➞ page 7 |
| Chapter 3 Using BIOS | Provides information on using the BIOS Setup Utility. Go to ➞ page 27 |
| Chapter 4 Using the Motherboard Software | Describes the motherboard software Go to ➞ page 43 |
| Chapter 5 Setting Up eJIFFY | Describes the eJIFFY setting up Go to ➞ page 51 |
| Chapter 6 Trouble Shooting | Provides basic trouble shooting tips Go to ➞ page 61 |

TABLE OF CONTENTS

| | |
|---|---------------|
| Preface | i |
| Chapter 1 | 1 |
| Introducing the Motherboard | 1 |
| Introduction..... | 1 |
| Feature..... | 2 |
| Motherboard Components..... | 4 |
| Chapter 2 | 7 |
| Installing the Motherboard | 7 |
| Safety Precautions..... | 7 |
| Choosing a Computer Case..... | 7 |
| Installing the Motherboard in a Case..... | 7 |
| Checking Jumper Settings..... | 8 |
| <i>Setting Jumpers.....</i> | <i>8</i> |
| <i>Checking Jumper Settings.....</i> | <i>9</i> |
| <i>Jumper Settings.....</i> | <i>9</i> |
| Installing Hardware..... | 10 |
| <i>Installing the Processor.....</i> | <i>10</i> |
| <i>Installing Memory Modules.....</i> | <i>12</i> |
| <i>Expansion Slots.....</i> | <i>15</i> |
| <i>Connecting Optional Devices.....</i> | <i>17</i> |
| <i>Installing a Hard Disk Drive/CD-ROM/SATA Hard Drive.....</i> | <i>20</i> |
| Connecting I/O Devices..... | 22 |
| Connecting Case Components..... | 23 |
| <i>Front Panel Header.....</i> | <i>25</i> |
| Chapter 3 | 27 |
| Using BIOS | 27 |
| About the Setup Utility..... | 27 |
| <i>The Standard Configuration.....</i> | <i>27</i> |
| <i>Entering the Setup Utility.....</i> | <i>27</i> |
| Using BIOS..... | 28 |
| <i>Standard CMOS Setup.....</i> | <i>29</i> |
| <i>Advanced Setup.....</i> | <i>31</i> |
| <i>Advanced Chipset Setup.....</i> | <i>33</i> |

| | |
|---|---------------|
| <i>Integrated Peripherals</i> | 34 |
| <i>Power Management Setup</i> | 35 |
| <i>PCI/PnP Configuration</i> | 36 |
| <i>PC Health Status</i> | 37 |
| <i>Frequency/Voltage Control</i> | 39 |
| <i>Load Default Settings</i> | 40 |
| <i>Supervisor Password</i> | 40 |
| <i>User Password</i> | 41 |
| <i>Save & Exit Setup</i> | 41 |
| <i>Exit Without Saving</i> | 41 |
| <i>Updating the BIOS</i> | 42 |
| Chapter 4 | 43 |
| Using the Motherboard Software | 43 |
| About the Software CD-ROM/DVD-ROM..... | 43 |
| Auto-installing under Windows XP/Vista/7..... | 43 |
| <i>Running Setup</i> | 44 |
| Manual Installation..... | 46 |
| Utility Software Reference..... | 46 |
| Chapter 5 | 51 |
| Setting Up eJIFFY | 51 |
| Introduction..... | 51 |
| Installation and BIOS Setup..... | 52 |
| Entering eJIFFY..... | 55 |
| Features Icons..... | 56 |
| Usage FAQ..... | 57 |
| Chapter 6 | 61 |
| Trouble Shooting | 61 |
| Start up problems during assembly..... | 61 |
| Start up problems after prolong use..... | 62 |
| Maintenance and care tips..... | 62 |
| Basic Troubleshooting Flowchart..... | 63 |

Chapter 1

Introducing the Motherboard

Introduction

Thank you for choosing the G43T-M motherboard. This motherboard is a high performance, enhanced function motherboard designed to support the LGA775 socket Intel® Yorkfield/Wolfdale family processors for high-end business or personal desktop markets.

The motherboard incorporates the G43 Northbridge (NB) and ICH10 Southbridge (SB) chipsets. The Northbridge supports a Front Side Bus (FSB) frequency of 1333/1066/800 MHz using a scalable FSB Vcc_CPU. The memory controller supports DDR2 memory DIMM frequencies of 800/667. It supports four DDR2 Sockets with up to maximum memory of 8 GB*. DDR2 Maximum memory bandwidth of 12.8 GB/s in dual-channel symmetric mode assuming DDR2 800 MHz. High resolution graphics via one PCI Express slot, intended for Graphics Interface, is fully compliant to the PCI Express Base Specification revision 2.0.

The ICH10 Southbridge supports one PCI slot which is PCI v2.3 compliant. In addition, two PCI Express x1 slots are supported. It implements an EHCI compliant interface that provides 480 Mb/s bandwidth for 12 USB 2.0 ports (6 USB ports and 3 USB 2.0 headers support additional 6 USB ports). The Southbridge integrates a Serial ATA host controller, supporting six SATA ports with maximum transfer rate up to 3.0 Gb/s each.

The motherboard is equipped with advanced full set of I/O ports in the rear panel, including PS/2 mouse and keyboard connectors, one HDMI port, one VGA port, six USB ports, one LAN port and audio jacks for microphone, line-in and 8-ch line-out.



** You can only insert two Single Bank memory modules to each channel when using one channel with two dimms, since G43 only supports two dimms with Dual-channel.*

Feature

Processor

The motherboard uses an LGA775 type of Intel® Yorkfield/Wolfdale family processors that carries the following features:

- Accommodates Intel® Yorkfield/Wolfdale family processors
- Supports a system bus (FSB) of 1333/1066/800 MHz
- Supports “Hyper-Threading” technology CPU

“Hyper-Threading” technology enables the operating system into thinking it’s hooked up to two processors, allowing two threads to be run in parallel, both on separate “logical” processors within the same physical processor.

Chipset

The G43 Northbridge (NB) and ICH10 Southbridge (SB) chipsets are based on an innovative and scalable architecture with proven reliability and performance.

- | | |
|-----------------------|---|
| G43 (NB) | <ul style="list-style-type: none"> • Supports 36-bit host bus addressing, allowing the CPU to access the entire 64 GB of the memory address space • 2 GB/s point-to-point Direct Media Interface (DMI) to ICH10 (1 GB/s each direction) • Supports 512-Mb and 1-Gb DDR2 and 512-Mb, 1-Gb, and 2-Gb DDR3 technologies for x8 and x16 devices • One, 16-lane (x16) PCI Express port intended for supporting up to two external PCI Express graphics card in bifurcated mode, fully compatible to the PCI Express Base Specification revision 2.0 • An integrated graphics device (IGD) delivering cost competitive 3D, 2D and video capabilities |
| ICH10 (SB) | <ul style="list-style-type: none"> • Enhanced DMA Controller, Timer/Counter functions, and Interrupt Controller • Compliant with PCI Express Base Specification, Revision 1.1 • Compliant with PCI v2.3 specification • Integrated SATA 3.0 Gb/s Host Controller • Integrated USB 2.0 Host Controller supporting up to twelve USB 2.0 ports • Integrated Gigabit LAN Controller |

Memory

- Supports DDR2 800/667 DDR2 SDRAM with Dual-channel architecture
- Accommodates four unbuffered DIMMs
- Up to 2 GB per DIMM with maximum memory size up to 8 GB*



** You can only insert two Single Bank memory modules to each channel when using one channel with two dimms, since G43 only supports two dimms with Dual-channel.*

Introducing the Motherboard

Audio

- 8 Channel High Definition Audio Codec
- All DACs support 192K/96K/48K/44.1KHz DAC sample rate
- High-quality analog differential CD input
- Meets Microsoft WLP 3.08 audio requirements
- Direct Sound 3D™ compatible

Onboard LAN

- Integrated 10/100/1000 Mbps IEEE 802.3 compliant

Expansion Options

The motherboard comes with the following expansion options:

- One PCI Express x 16 slot for Graphic Interface
- Two PCI Express x1 Slots
- One 32-bit PCI v2.3 compliant slot•
- One IDE connector supporting up to two IDE devices
- Six 7-pin SATA connectors

This motherboard supports Ultra DMA bus mastering with transfer rates of 133/100/66/33 Mb/s.

Integrated I/O

The motherboard has a full set of I/O ports and connectors:

- Two PS/2 ports for mouse and keyboard
- One HDMI port
- One VGA port
- Six USB ports
- One LAN port
- Audio jacks for microphone, line-in and 8-ch High Definition Audio output

BIOS Firmware

This motherboard uses AMI BIOS that enables users to configure many system features including the following:

- Power management
- Wake-up alarms
- CPU parameters
- CPU and memory timing

The firmware can also be used to set parameters for different processor clock speeds.

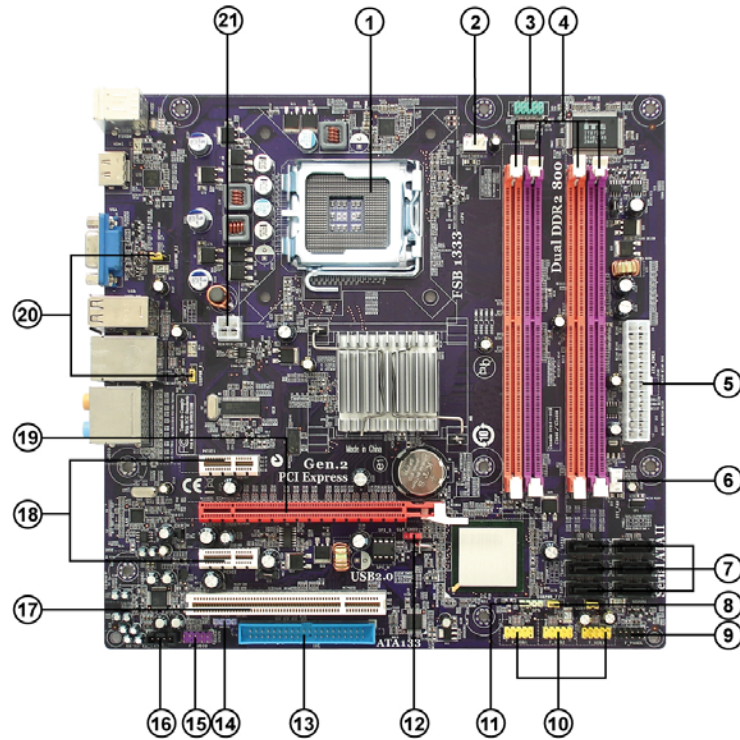


1. Some hardware specifications and software items are subject to change without prior notice.

2. Due to chipset limitation, we recommend that motherboard be operated in the ambience between 0 and 50 °C.

Introducing the Motherboard

Motherboard Components



Introducing the Motherboard

Table of Motherboard Components

| LABEL | COMPONENTS |
|-----------------|--|
| 1. CPU Socket | LGA775 socket for Intel [®] Yorkfield/Wolfdale CPUs |
| 2. CPU_FAN | CPU cooling fan connector |
| 3. COM | Onboard Serial Port header |
| 4. DDR2_DIMM1~4 | 240-pin DDR2 SDRAM slots |
| 5. ATX_POWER | Standard 24-pin ATX power connector |
| 6. SYS_FAN | System cooling fan connector |
| 7. SATA1~6 | Serial ATA connectors |
| 8. USBPWR_F1~2 | Front Panel USB Power Select jumpers |
| 9. F_PANEL | Front panel switch/LED header |
| 10. F_USB1~3 | Front Panel USB headers |
| 11. SPK | Internal Speaker header |
| 12. CLR_CMOS | Clear CMOS jumper |
| 13. IDE | Primary IDE connector |
| 14. SPDIFO | SPDIF out header |
| 15. F_AUDIO | Front panel audio header |
| 16. CD_IN | Analog audio input connector |
| 17. PCI | 32-bit add-on card slot |
| 18. PCIE1~2 | PCI Express x1 slots |
| 19. PCIE16 | PCI Express x16 graphics card slot |
| 20. USBPWR_R1~2 | Rear USB/PS2 Power Select jumpers |
| 21. ATX12V | 4-pin +12V power connector |

This concludes Chapter 1. The next chapter explains how to install the motherboard.

Memo

Introducing the Motherboard

Chapter 2

Installing the Motherboard

Safety Precautions

- Follow these safety precautions when installing the motherboard
- Wear a grounding strap attached to a grounded device to avoid damage from static electricity
- Discharge static electricity by touching the metal case of a safely grounded object before working on the motherboard
- Leave components in the static-proof bags they came in
- Hold all circuit boards by the edges. Do not bend circuit boards

Choosing a Computer Case

There are many types of computer cases on the market. The motherboard complies with the specifications for the Micro ATX system case. First, some features on the motherboard are implemented by cabling connectors on the motherboard to indicators and switches on the system case. Make sure that your case supports all the features required. Secondly, this motherboard supports two enhanced IDE drives. Make sure that your case has sufficient power and space for all drives that you intend to install.

Most cases have a choice of I/O templates in the rear panel. Make sure that the I/O template in the case matches the I/O ports installed on the rear edge of the motherboard.

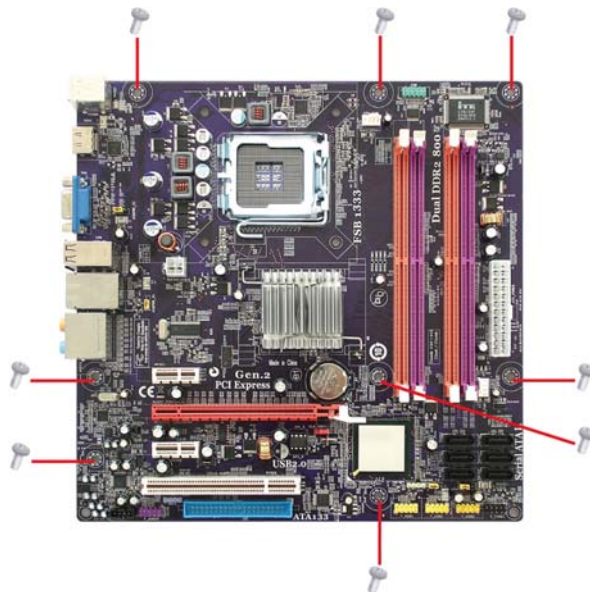
This motherboard carries a Micro ATX form factor of 244 x 244 mm. Choose a case that accommodates this form factor.

Installing the Motherboard in a Case

Refer to the following illustration and instructions for installing the motherboard in a case.

Most system cases have mounting brackets installed in the case, which correspond the holes in the motherboard. Place the motherboard over the mounting brackets and secure the motherboard onto the mounting brackets with screws.

Ensure that your case has an I/O template that supports the I/O ports and expansion slots on your motherboard.



Do not over-tighten the screws as this can stress the motherboard.

Checking Jumper Settings

This section explains how to set jumpers for correct configuration of the motherboard.

Setting Jumpers

Use the motherboard jumpers to set system configuration options. Jumpers with more than one pin are numbered. When setting the jumpers, ensure that the jumper caps are placed on the correct pins.

The illustrations show a 2-pin jumper. When the jumper cap is placed on both pins, the jumper is **SHORT**. If you remove the jumper cap, or place the jumper cap on just one pin, the jumper is **OPEN**.

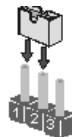


SHORT



OPEN

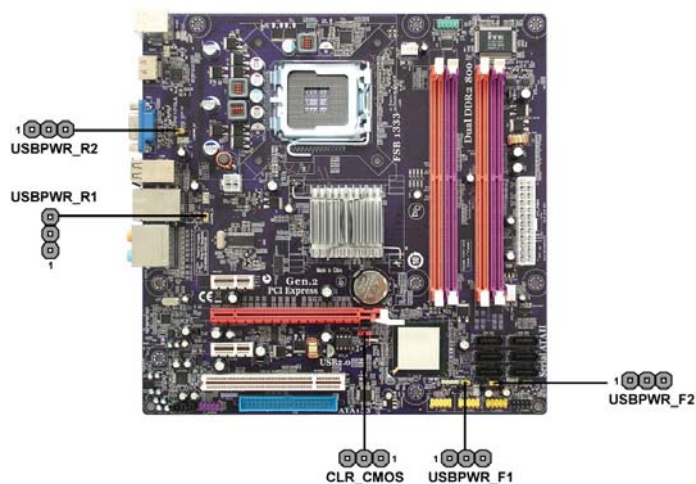
This illustration shows a 3-pin jumper. Pins 1 and 2 are **SHORT**.







Installing the Motherboard

Checking Jumper Settings

The following illustration shows the location of the motherboard jumpers. Pin 1 is labeled.



Jumper Settings

| Jumper | Type | Description | Setting (default) | |
|-------------|-------|-------------------------------------|--|--|
| CLR_CMOS | 3-pin | CLEAR CMOS | 1-2: NORMAL 2-3: CLEAR Before clearing the CMOS, make sure to turn the system off. |  1 CLR_CMOS |
| USBPWR_F1~2 | 3-pin | Front Panel USB Power Select Jumper | 1-2: VCC 2-3: 5VSB |  1 USBPWR_F1~2 |
| USBPWR_R1 | 3-pin | Rear USB/PS2 Power Select Jumper | 1-2: VCC 2-3: 5VSB |  1 USBPWR_R1 |
| USBPWR_R2 | 3-pin | Rear USB/PS2 Power Select Jumper | 1-2: VCC 2-3: 5VSB |  1 USBPWR_R2 |

Installing the Motherboard



1. To avoid the system instability after clearing CMOS, we recommend users to enter the main BIOS setting page to “Load Default Settings” and then “Save & Exit Setup”.
2. Make sure the power supply provides enough 5VSB voltage before selecting the 5VSB function.
3. It is required that users place the USBPWR_F1~2 & USBPWR_R1~2 cap onto 2-3 pin rather than 1-2 pin as default if you want to wake up the computer by USB/PS2 KB/Mouse.

Installing Hardware

Installing the Processor



*Caution: When installing a CPU heatsink and cooling fan make sure that you **DO NOT** scratch the motherboard or any of the surface-mount resistors with the clip of the cooling fan. If the clip of the cooling fan scrapes across the motherboard, you may cause serious damage to the motherboard or its components.*

On most motherboards, there are small surface-mount resistors near the processor socket, which may be damaged if the cooling fan is carelessly installed.

Avoid using cooling fans with sharp edges on the fan casing and the clips. Also, install the cooling fan in a well-lit work area so that you can clearly see the motherboard and processor socket.

Before installing the Processor

This motherboard automatically determines the CPU clock frequency and system bus frequency for the processor. You may be able to change the settings in the system Setup Utility. We strongly recommend that you do not over-clock processors or other components to run faster than their rated speed.



Warning:

1. Over-clocking components can adversely affect the reliability of the system and introduce errors into your system. Over-clocking can permanently damage the motherboard by generating excess heat in components that are run beyond the rated limits.
2. Always remove the AC power by unplugging the power cord from the power outlet before installing or removing the motherboard or other hardware components.

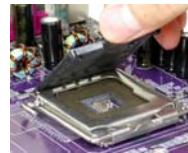
This motherboard has an LGA775 socket. When choosing a processor, consider the performance requirements of the system. Performance is based on the processor design, the clock speed and system bus frequency of the processor, and the quantity of internal cache memory and external cache memory.

Installing the Motherboard

CPU Installation Procedure

The following illustration shows CPU installation components.

- A. Read and follow the instructions shown on the sticker on the CPU cap.
- B. Unload the cap
 - Use thumb & forefinger to hold the lifting tab of the cap.
 - Lift the cap up and remove the cap completely from the socket.
- C. Open the load plate
 - Use thumb & forefinger to hold the hook of the lever, pushing down and pulling aside unlock it.
 - Lift up the lever.
 - Use thumb to open the load plate. Be careful not to touch the contacts.
- D. Install the CPU on the socket
 - Orientate CPU package to the socket. Make sure you match triangle marker to pin 1 location.
- E. Close the load plate
 - Slightly push down the load plate onto the tongue side, and hook the lever.
 - CPU is locked completely.
- F. Apply thermal grease on top of the CPU.
- G. Fasten the cooling fan supporting base onto the CPU socket on the motherboard.
- H. Make sure the CPU fan is plugged to the CPU fan connector. Please refer to the CPU cooling fan user's manual for more detail installation procedure.



1. To achieve better airflow rates and heat dissipation, we suggest that you use a high quality fan with 3800 rpm at least. CPU fan and heatsink installation procedures may vary with the type of CPU fan/heatsink supplied. The form and size of fan/heatsink may also vary.
2. DO NOT remove the CPU cap from the socket before installing a CPU.
3. Return Material Authorization (RMA) requests will be accepted only if the motherboard comes with the cap on the LGA775 socket.

Installing the Motherboard

Installing Memory Modules

This motherboard accommodates four memory modules. It can support four 240-pin DDR2 800/667. The total memory capacity is 8 GB*.

DDR2 SDRAM memory module table

| Memory module | Memory Bus |
|-----------------|----------------|
| <i>DDR2 667</i> | <i>333 MHz</i> |
| <i>DDR2 800</i> | <i>400 MHz</i> |

You must install at least one module in any of the four slots. Each module can be installed with 4 GB of memory; total memory capacity is 8 GB*.



Do not remove any memory module from its antistatic packaging until you are ready to install it on the motherboard. Handle the modules only by their edges. Do not touch the components or metal parts. Always wear a grounding strap when you handle the modules.

Installation Procedure

Refer to the following to install the memory modules.

- 1 This motherboard supports unbuffered DDR2 SDRAM .
- 2 Push the latches on each side of the DIMM slot down.
- 3 Align the memory module with the slot. The DIMM slots are keyed with notches and the DIMMs are keyed with cutouts so that they can only be installed correctly.
- 4 Check that the cutouts on the DIMM module edge connector match the notches in the DIMM slot.
- 5 Install the DIMM module into the slot and press it firmly down until it seats correctly. The slot latches are levered upwards and latch on to the edges of the DIMM.
- 6 Install any remaining DIMM modules.



** You can only insert two Single Bank memory modules to each channel when using one channel with two dimms, since G43 only supports two dimms with Dual-channel.*

Installing the Motherboard

Due to chipset limitation, please follow closely the table below when installing memory for dual channel or single channel mode operation.

Memory Installation Combination

For dual channel configuration, you must always install identical (the same board, speed, size and chip-type) DDR2 DIMM pair in the slots of the same color.

| Memory Installation Combination -- Dual Channel Mode | | | | | |
|--|----------|-------|-------|-------|-------|
| DS => Double Side, SS => Single Side, X => None Installed Memory | | | | | |
| | | DIMM1 | DIMM2 | DIMM3 | DIMM4 |
| Combination for Dual Channel Mode | 2 Module | DS/SS | X | DS/SS | X |
| | 2 Module | DS/SS | X | X | DS/SS |
| | 2 Module | X | DS/SS | DS/SS | X |
| | 2 Module | X | DS/SS | X | DS/SS |
| | 4 Module | SS | SS | SS | SS |

The following combination will result in single channel mode operation:

| Memory Installation Combination -- Single Channel Mode | | | | | |
|--|----------|-----------------------------------|-------|-------|-------|
| DS => Double Side, SS => Single Side, X => None Installed Memory | | | | | |
| | | DIMM1 | DIMM2 | DIMM3 | DIMM4 |
| Combination for Single Channel Mode | 1 Module | DS/SS - Insert into any DIMM slot | | | |
| | 2 Module | DS/SS | X | X | X |
| | 2 Module | X | DS/SS | X | X |
| | 2 Module | X | X | DS/SS | X |
| | 2 Module | X | X | X | DS/SS |
| | 2 Module | SS | SS | X | X |
| | 2 Module | X | X | SS | SS |



To enable successful system boot-up, always insert the memory modules into the DIMM1 first.

Table A: DDR2 (memory module) QVL (Qualified Vendor List)

The following DDR2 800/667 memory modules and combination have been tested and qualified for use with this motherboard.

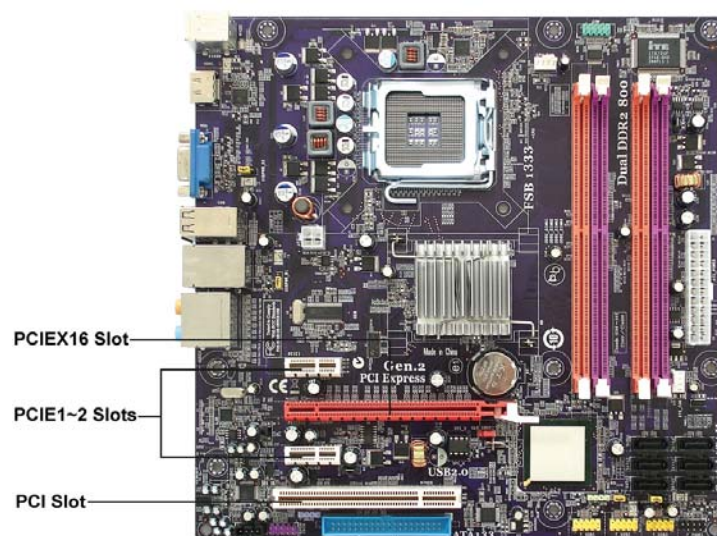
| DIMM Slot: DS=Double side, SS=Single Side, 0=No DIMM socket | | | | | | | |
|---|--------|-----------|--|-----------|----|----|----|
| Type | Size | Vendor | Module Name | DIMM Slot | | | |
| | | | | 1 | 2 | 3 | 4 |
| DDR2 667 | 256 MB | Infineon | HYS64T325001HU-3-A HYB18T256 | SS | 0 | SS | 0 |
| | | Ramaxel | 5NB31 D9DCG | 0 | SS | 0 | SS |
| | | A-DATA | AD29608A88-3EG | SS | 0 | SS | 0 |
| | | Apacer | 78.91G92.9K5 | SS | SS | SS | SS |
| | 512 MB | | VALUESELECT 32M8CEC | DS | 0 | DS | 0 |
| | | CORSAIR | 64M8CFE PS1000545 | SS | 0 | SS | 0 |
| | | Corsair | K4T5108QC | SS | 0 | SS | 0 |
| | | GEIL | GL2L64M088BA18W | SS | 0 | SS | 0 |
| | | Ramaxel | 5LB31 D9DCL | SS | 0 | 0 | 0 |
| | | Samsung | K4T51083QC | SS | 0 | SS | 0 |
| | | Sync MAX | E5108AB-5C-E | SS | 0 | 0 | 0 |
| | | Transcend | JetRam J12Q3AB-6 | SS | 0 | SS | 0 |
| | | | SEL520ZCE6 | SS | 0 | SS | 0 |
| | | Tw inmos | TMM6208G8M30B | 0 | SS | 0 | SS |
| | 1 GB | Apacer | Elpida 1GB AM4B5708GEWS7E-0637F | DS | 0 | DS | 0 |
| | | | AM4B5708GQJS7E0631F | 0 | DS | 0 | DS |
| | | | HYB18T512800BF3S | DS | 0 | 0 | 0 |
| | | Infineon | Aeneon AET93E30RB-0650 1GB | DS | 0 | DS | 0 |
| | 2 GB | LeadMax | LeadMax LD5PS1G831 | DS | 0 | DS | 0 |
| DDR2 800 | 512 MB | A-DATA | AD29608A8A-25EG | SS | 0 | SS | 0 |
| | | Elpida | E5108AJBG-8E-E | SS | 0 | SS | 0 |
| | | Infineon | HYS64T64020HU-2.5-A HYB18T256 800AF25 | DS | 0 | DS | 0 |
| | | Infinity | 04751208CZ5U2D | SS | 0 | SS | 0 |
| | | Kingston | KHX6400D2ULK2 | SS | 0 | SS | 0 |
| | | Micron | 6WD22 D9GKX | SS | 0 | SS | 0 |
| | | Sync MAX | U538H8G09DHL | SS | 0 | SS | 0 |
| | | A-DATA | VD29608A8D-25EG-E0722 | DS | 0 | 0 | 0 |
| | 1 GB | Apacer | AM4B5808CQJS8E 0749D | SS | 0 | SS | 0 |
| | | | AM4B5708JQJS8E 0749D | SS | 0 | SS | 0 |
| | | | AM4B5708BPSJ8E0634E | DS | 0 | DS | 0 |
| | | CORSAIR | CM2X1024-6400PRO | DS | 0 | 0 | 0 |
| | | | CM2X1024-6400 | DS | 0 | DS | 0 |
| | | GEIL | GL2L64M088BA18H | DS | 0 | DS | 0 |
| | | | GEIL PLATINUM EDITION | DS | 0 | DS | 0 |
| | | Hexon | NP18T648512F-2.5 | DS | 0 | DS | 0 |
| | | Infinity | 04701G16CZ5U2G | DS | 0 | DS | 0 |
| | | Ramaxel | E5108AHSE-8E-E 0705098L1 | DS | 0 | DS | 0 |
| | 2 GB | Samsung | ZCE7 K4T510830E | DS | 0 | DS | 0 |
| | | Transcend | TQ123PGF8T0709 | DS | 0 | DS | 0 |
| | | UMAX | U2S12D30TP-8E | DS | 0 | DS | 0 |
| | | A-DATA | RED FEROCIOUS DRAGON M20M6H3J4720L1C5Z | DS | 0 | DS | 0 |
| | | Aeneon | AET03R25DC 0732 | DS | 0 | DS | 0 |
| | | Apacer | AM4B5808CQJS8E 0747D | DS | 0 | DS | 0 |
| | | CORSAIR | CM2X2048-6400C5 | DS | 0 | DS | 0 |
| | | Micron | 7QEID9HNP | DS | 0 | DS | 0 |
| | | PSC | A3R1GE3CFF 734MAAOE | DS | 0 | DS | 0 |
| | | Qimonda | HYB18T1G800C2F-25F 0744 | DS | 0 | DS | 0 |
| | | Samsung | HCF7 K4T1G084QQ | 0 | 0 | DS | 0 |

Installing the Motherboard

Expansion Slots

Installing Add-on Cards

The slots on this motherboard are designed to hold expansion cards and connect them to the system bus. Expansion slots are a means of adding or enhancing the motherboard's features and capabilities. With these efficient facilities, you can increase the motherboard's capabilities by adding hardware that performs tasks that are not part of the basic system.



PCIEX16 Slot The PCI Express x16 slot is used to install an external PCI Express graphics card that is fully compliant to the PCI Express Base Specification revision 2.0.

PCIEX1~2 Slots The PCI Express x1 slots are fully compliant to the PCI Express Base Specification revision 1.1.

PCI Slot This motherboard is equipped with one standard PCI slot. PCI stands for Peripheral Component Interconnect and is a bus standard for expansion cards, which for the most part, is a supplement of the older ISA bus standard. The PCI slot on this board is PCI v2.3 compliant.

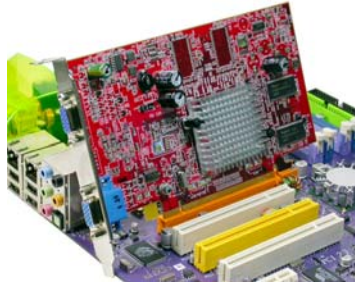


Before installing an add-on card, check the documentation for the card carefully. If the card is not Plug and Play, you may have to manually configure the card before installation.

Installing the Motherboard

Follow these instructions to install an add-on card:

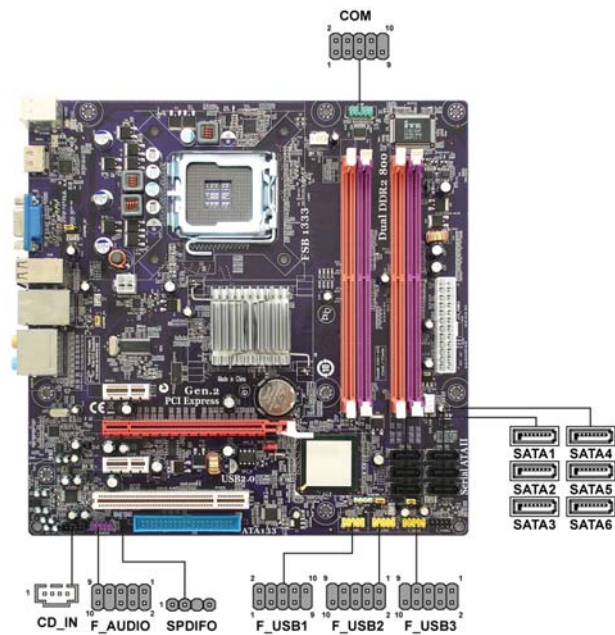
- 1 Remove a blanking plate from the system case corresponding to the slot you are going to use.
- 2 Install the edge connector of the add-on card into the expansion slot. Ensure that the edge connector is correctly seated in the slot.
- 3 Secure the metal bracket of the card to the system case with a screw.



For some add-on cards, for example graphics adapters and network adapters, you have to install drivers and software before you can begin using the add-on card.

Connecting Optional Devices

Refer to the following for information on connecting the motherboard's optional devices:



F_AUDIO: Front Panel Audio header

This header allows the user to install auxiliary front-oriented microphone and line-out ports for easier access.

| Pin | Signal Name | Pin | Signal Name |
|-----|-------------|-----|---------------|
| 1 | PORT 1L | 2 | AUD_GND |
| 3 | PORT 1R | 4 | PRESENCE# |
| 5 | PORT 2R | 6 | SENSE1_RETURN |
| 7 | SENSE_SEND | 8 | KEY |
| 9 | PORT 2L | 10 | SENSE2_RETURN |

SPDIFO: SPDIF out header

This is an optional header that provides an S/PDIF (Sony/Philips Digital Interface) output to digital multimedia device through optical fiber or coaxial connector.

| Pin | Signal Name | Function |
|-----|-------------|----------------------|
| 1 | SPDIF | SPDIF digital output |
| 2 | +5VA | 5V analog Power |
| 3 | Key | No pin |
| 4 | GND | Ground |

SATA1~6: Serial ATA connectors

These connectors are used to support the new Serial ATA devices for the highest data transfer rates (3.0 Gb/s), simpler disk drive cabling and easier PC assembly. It eliminates limitations of the current Parallel ATA interface. But maintains register compatibility and software compatibility with Parallel ATA.

| Pin | Signal Name | Pin | Signal Name |
|-----|-------------|-----|-------------|
| 1 | Ground | 2 | TX+ |
| 3 | TX- | 4 | Ground |
| 5 | RX- | 6 | RX+ |
| 7 | Ground | - | - |

F_USB1~3: Front Panel USB headers

The motherboard has six USB ports installed on the rear edge I/O port array. Additionally, some computer cases have USB ports at the front of the case. If you have this kind of case, use auxiliary USB connector to connect the front-mounted ports to the motherboard.

| Pin | Signal Name | Function |
|-----|-------------|----------------------------|
| 1 | USBPWR | Front Panel USB Power |
| 2 | USBPWR | Front Panel USB Power |
| 3 | USB_FP_P0- | USB Port 0 Negative Signal |
| 4 | USB_FP_P1- | USB Port 1 Negative Signal |
| 5 | USB_FP_P0+ | USB Port 0 Positive Signal |
| 6 | USB_FP_P1+ | USB Port 1 Positive Signal |
| 7 | GND | Ground |
| 8 | GND | Ground |
| 9 | Key | No pin |
| 10 | USB_FP_OC0 | Overcurrent signal |



Please make sure that the USB cable has the same pin assignment as indicated above. A different pin assignment may cause damage or system hang-up.

CD_IN: Analog Audio Input connector

| Pin | Signal Name | Function |
|-----|-------------|---------------------|
| 1 | CD_L | CD In left channel |
| 2 | GND | Ground |
| 3 | GND | Ground |
| 4 | CD_R | CD In right channel |

COM: Onboard Serial Port header

Connect a serial port extension bracket to this header to add a second serial port to your system.

| Pin | Signal Name | Function |
|-----|-------------|----------------------------|
| 1 | DCDB | Data Carrier Detect |
| 2 | SINB | Serial Input |
| 3 | SOUTB | UART B Serial Output |
| 4 | DTRB | UART B Data Terminal Ready |
| 5 | GND | Ground |
| 6 | DSRB | Data Set Ready |
| 7 | RTSB | UART B Request to Send |
| 8 | CTSB | Clear to Send |
| 9 | RI | Ring Indicator |
| 10 | Key | No pin |

SPI_ROM: SPI ROM header

This 8 Mb ROM contains the programmable BIOS program.

| Pin | Signal Name | Function |
|-----|---------------|--------------------|
| 1 | CHIPSELECT | Select chip |
| 2 | VCC | VCC |
| 3 | DATA OUTPUT | data output |
| 4 | HOLD | hold |
| 5 | WRITE PROTECT | BIOS write protect |
| 6 | CLOCK | clock |
| 7 | CND | CND |
| 8 | DATA INPUT | data input |

Installing a Hard Disk Drive/CD-ROM/SATA Hard Drive

This section describes how to install IDE devices such as a hard disk drive and a CD-ROM drive.

About IDE Devices

Your motherboard has one IDE channel interface.

IDE: IDE Connector

This motherboard supports six high data transfer SATA ports with each runs up to 3.0 Gb/s. To get better system performance, we recommend users connect the CD-ROM to the IDE channel, and set up the hard drives on the SATA ports.



IDE devices enclose jumpers or switches used to set the IDE device as MASTER or SLAVE. Refer to the IDE device user's manual. Installing two IDE devices on one cable, ensure that one device is set to MASTER and the other device is set to SLAVE. The documentation of your IDE device explains how to do this.

About SATA Connectors

Your motherboard features six SATA connectors supporting a total of six drives. SATA refers to Serial ATA (Advanced Technology Attachment) is the standard interface for the IDE hard drives which are currently used in most PCs. These connectors are well designed and will only fit in one orientation. Locate the SATA connectors on the motherboard and follow the illustration below to install the SATA hard drives.

Installing Serial ATA Hard Drives

To install the Serial ATA (SATA) hard drives, use the SATA cable that supports the Serial ATA protocol. This SATA cable comes with an SATA power cable. You can connect either end of the SATA cable to the SATA hard drive or the connector on the motherboard.



SATA cable (optional)



SATA power cable (optional)

Refer to the illustration below for proper installation:

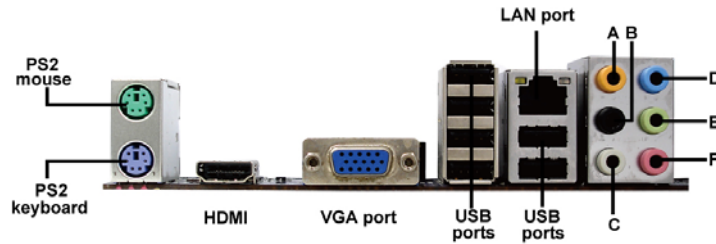
- 1 Attach either cable end to the connector on the motherboard.
- 2 Attach the other cable end to the SATA hard drive.
- 3 Attach the SATA power cable to the SATA hard drive and connect the other end to the power supply.



This motherboard supports the “Hot-Plug” function.

Connecting I/O Devices

The backplane of the motherboard has the following I/O ports:



PS2 Mouse Use the upper PS/2 port to connect a PS/2 pointing device.

PS2 Keyboard Use the lower PS/2 port to connect a PS/2 keyboard.

VGA Port Connect your monitor to the VGA port.

HDMI Port Connect the HDMI port to the HDMI devices.

USB Ports Use the USB ports to connect USB devices.

LAN Port Connect an RJ-45 jack to the LAN port to connect your computer to the network.

Audio Ports Use the audio jacks to connect audio devices. The D port is for stereo line-in signal, while the F port is for microphone in signal. This motherboard supports 8-channel audio devices that correspond to the A,B, C, and E port respectively. In addition, all of the 3 ports, B, C, and E provide users with both right & left channels individually. Users please refer to the following note for specific port function definition.



| | |
|---------------------|-----------------|
| A : Center & Woofer | D : Line-in |
| B : Back Surround | E : Front Out |
| C : Side Surround | F : Mic_in Rear |

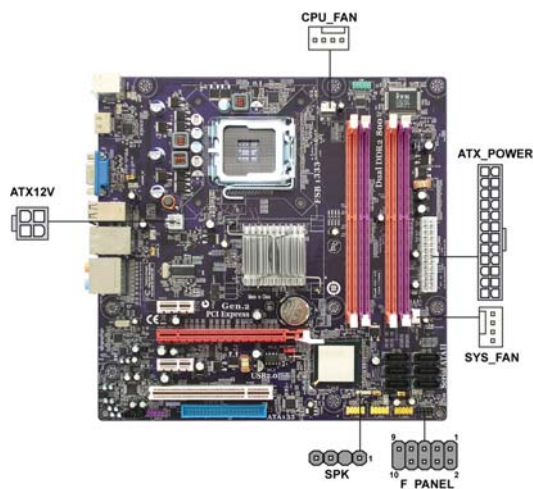
The above port definition can be changed to audio input or audio output by changing the driver utility setting.

Installing the Motherboard

Connecting Case Components

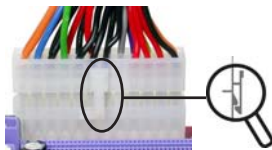
After you have installed the motherboard into a case, you can begin connecting the motherboard components. Refer to the following:

- 1 Connect the CPU cooling fan cable to **CPU_FAN**.
- 2 Connect the system cooling fan connector to **SYS_FAN**.
- 3 Connect the case switches and indicator LEDs to the **F_PANEL**.
- 4 Connect the standard power supply connector to **ATX_POWER**.
- 5 Connect the auxiliary case power supply connector to **ATX12V**.
- 6 Connect the case speaker cable to **SPK**.



Connecting 24-pin power cable

The ATX 24-pin connector allows you to connect to ATX v2.x power supply.



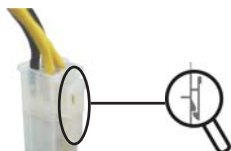
With ATX v2.x power supply, users please note that when installing 24-pin power cable, the latches of power cable and the ATX_POWER match perfectly.

24-pin power cable



Connecting 4-pin power cable

The ATX12V power connector is used to provide power to the CPU.



When installing 4-pin power cable, the latches of power cable and the ATX12V match perfectly.

4-pin power cable

Installing the Motherboard

CPU_FANS/SYS_FAN: FAN Power Connector

| Pin | Signal Name | Function |
|-----|-------------|---------------|
| 1 | GND | System Ground |
| 2 | +12V | Power +12V |
| 3 | Sense | Sensor |
| 4 | PWM | PWM |



Users please note that the fan connector supports the CPU cooling fan of 1.1A ~ 2.2A (26.4W max) at +12V.

ATX_POWER: ATX 24-pin Power Connector

| Pin | Signal Name | Pin | Signal Name |
|-----|-------------|-----|-------------|
| 1 | +3.3V | 13 | +3.3V |
| 2 | +3.3V | 14 | -12V |
| 3 | Ground | 15 | Ground |
| 4 | +5V | 16 | PS_ON |
| 5 | Ground | 17 | Ground |
| 6 | +5V | 18 | Ground |
| 7 | Ground | 19 | Ground |
| 8 | PWRGD | 20 | -5V |
| 9 | +5VSB | 21 | +5V |
| 10 | +12V | 22 | +5V |
| 11 | +12V | 23 | +5V |
| 12 | +3.3V | 24 | Ground |

ATX12V: ATX 12V Power Connector

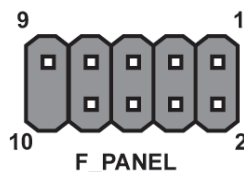
| Pin | Signal Name |
|-----|-------------|
| 1 | Ground |
| 2 | Ground |
| 3 | +12V |
| 4 | +12V |

SPK: Internal speaker header

| Pin | Signal Name |
|-----|-------------|
| 1 | VCC |
| 2 | Key |
| 3 | GND |
| 4 | Signal |

Front Panel Header

The front panel header (F_PANEL) provides a standard set of switch and LED headers commonly found on ATX or Micro ATX cases. Refer to the table below for information:



| Pin | Signal | Function | Pin | Signal | Function |
|-----|----------|------------------|-----|------------|-----------------|
| 1 | HD_LED_P | Hard disk LED(+) | 2 | FP_PWR/SLP | *MSG LED(+) |
| 3 | HD_LED_N | Hard disk LED(-) | 4 | FP_PWR/SLP | *MSG LED(-) |
| 5 | RST_SW_N | Reset Switch(-) | 6 | PWR_SW_P | Power Switch(+) |
| 7 | RST_SW_P | Reset Switch(+) | 8 | PWR_SW_N | Power Switch(-) |
| 9 | RSVD | Reserved | 10 | Key | No pin |

* MSG LED (dual color or single color)

Hard Drive Activity LED

Connecting pins 1 and 3 to a front panel mounted LED provides visual indication that data is being read from or written to the hard drive. For the LED to function properly, an IDE drive should be connected to the onboard IDE interface. The LED will also show activity for devices connected to the SCSI (hard drive activity LED) connector.

Power/Sleep/Message waiting LED

Connecting pins 2 and 4 to a single or dual-color, front panel mounted LED provides power on/off, sleep, and message waiting indication.

Reset Switch

Supporting the reset function requires connecting pins 5 and 7 to a momentary-contact switch that is normally open. When the switch is closed, the board resets and runs POST.

Power Switch

Supporting the power on/off function requires connecting pins 6 and 8 to a momentary-contact switch that is normally open. The switch should maintain contact for at least 50 ms to signal the power supply to switch on or off. The time requirement is due to internal de-bounce circuitry. After receiving a power on/off signal, at least two seconds elapses before the power supply recognizes another on/off signal.

This concludes Chapter 2. The next chapter covers the BIOS.

Installing the Motherboard

Memo

Installing the Motherboard

Chapter 3

Using BIOS

About the Setup Utility

The computer uses the latest “American Megatrends Inc.” BIOS with support for Windows Plug and Play. The CMOS chip on the motherboard contains the ROM setup instructions for configuring the motherboard BIOS.

The BIOS (Basic Input and Output System) Setup Utility displays the system’s configuration status and provides you with options to set system parameters. The parameters are stored in battery-backed-up CMOS RAM that saves this information when the power is turned off. When the system is turned back on, the system is configured with the values you stored in CMOS.

The BIOS Setup Utility enables you to configure:

- Hard drives, diskette drives and peripherals
- Video display type and display options
- Password protection from unauthorized use
- Power Management features

The settings made in the Setup Utility affect how the computer performs. Before using the Setup Utility, ensure that you understand the Setup Utility options.

This chapter provides explanations for Setup Utility options.

The Standard Configuration

A standard configuration has already been set in the Setup Utility. However, we recommend that you read this chapter in case you need to make any changes in the future.

This Setup Utility should be used:

- when changing the system configuration
- when a configuration error is detected and you are prompted to make changes to the Setup Utility
- when trying to resolve IRQ conflicts
- when making changes to the Power Management configuration
- when changing the password or making other changes to the Security Setup

Entering the Setup Utility

When you power on the system, BIOS enters the Power-On Self Test (POST) routines. POST is a series of built-in diagnostics performed by the BIOS. After the POST routines are completed, the following message appears:

Press DEL to enter SETUP

Using BIOS

Press the delete key to access the BIOS Setup Utility.

CMOS Setup Utility -- Copyright (C) 1985-2008, American Megatrends, Inc.

| | |
|--|--|
| <ul style="list-style-type: none"> ▶ Standard CMOS Setup ▶ Advanced Setup ▶ Advanced Chipset Setup ▶ Integrated Peripherals ▶ Power Management Setup ▶ PCI/PnP Configuration ▶ PC Health Status | <ul style="list-style-type: none"> ▶ Frequency/Voltage Control Load Default Settings ▶ Supervisor Password ▶ User Password Save & Exit Setup Exit Without Saving |
| <p>↑↓ → ← : Move Enter : Select +/- : Value F10: Save ESC: Exit F1: General Help F9: Load Default Settings</p> | |
| <p>v02.61 (C) Copyright 1985-2008, American Megatrends, Inc.</p> | |

Using BIOS

When you start the Setup Utility, the main menu appears. The main menu of the Setup Utility displays a list of the options that are available. A highlight indicates which option is currently selected. Use the cursor arrow keys to move the highlight to other options. When an option is highlighted, execute the option by pressing <Enter>.

Some options lead to pop-up dialog boxes that prompt you to verify that you wish to execute that option. Other options lead to dialog boxes that prompt you for information.

Some options (marked with a triangle ▶) lead to submenus that enable you to change the values for the option. Use the cursor arrow keys to scroll through the items in the submenu.

In this manual, default values are enclosed in parenthesis. Submenu items are denoted by a triangle ▶.



The default BIOS setting for this motherboard applies for most conditions with optimum performance. It is not suggested to change the default values in the BIOS setup and the manufacture takes no responsibility to any damage caused by changing the BIOS settings.

BIOS Navigation Keys

The BIOS navigation keys are listed below:

| KEY | FUNCTION |
|------------------|--|
| ESC | Exits the current menu |
| ↑↓ → ← | Scrolls through the items on a menu |
| +/-/PU/PD | Modifies the selected field's values |
| Enter | Select |
| F9 | Loads an optimized setting for better performance |
| F10 | Saves the current configuration and exits setup |
| F1 | Displays a screen that describes all key functions |

Using BIOS



For the purpose of better product maintenance, the manufacture reserves the right to change the BIOS items presented in this manual. The BIOS setup screens shown in this chapter are for reference only and may differ from the actual BIOS. Please visit the manufacture's website for updated manual.

Standard CMOS Setup

This option displays basic information about your system.

CMOS Setup Utility - Copyright (C) 1985-2008, American Megatrends, Inc.
Standard CMOS Setup

| | | |
|---------------------|----------------|---|
| Date (www.mm.dd.yy) | Mon 04/28/2008 | Help Item |
| Time (hh:mm:ss) | 05 : 30 : 04 | |
| ► SATA1 | Not Detected | User [Enter], [TAB] or [SHIFT-TAB] to select a field. Use [+] or [-] to configure system Date. |
| ► SATA2 | Not Detected | |
| ► SATA3 | Not Detected | |
| ► SATA4 | Not Detected | |
| ► SATA5 | Not Detected | |
| ► SATA6 | Not Detected | |
| ► PATA MASTER | Not Detected | |
| ► PATA SLAVE | Not Detected | |
| IDE BusMaster | Enabled | |

↑↓ → ←: Move Enter: Select +/-: Value F10: Save ESC: Exit
F1: General Help F9: Load Default Settings

Date (www mm.dd.yy) & Time (hh:mm:ss)

The Date and Time items show the current date and time on the computer. If you are running a Windows OS, these items are automatically updated whenever you make changes to the Windows Date and Time Properties utility.

► SATA 1-6/PATA MASTER/SLAVE

Your computer has one IDE channel which can be installed with one or two devices (Master and Slave). In addition, this motherboard supports six SATA channels and each channel allows one SATA device to be installed. Use these items to configure each device on the IDE channel.

CMOS SETUP UTILITY - Copyright (C) 1985-2008, American Megatrends, Inc.
SATA1

| | | |
|-------------------------------|---------|--|
| SATA1 | | Help Item |
| Device : Not Detected | | |
| Type | Auto | Select the type of device connected to the system. |
| LBA/Large Mode | Auto | |
| Block (Multi-Sector Transfer) | Auto | |
| PIO Mode | Auto | |
| DMA Mode | Auto | |
| S.M.A.R.T | Auto | |
| 32Bit Data Transfer | Enabled | |

↑↓ → ←: Move Enter: Select +/-: Value F10: Save ESC: Exit
F1: General Help F9: Load Default Settings

Using BIOS

Type (Auto)

Use this item to configure the type of the IDE device that you specify. If the feature is enabled, it will enhance hard disk performance by reading or writing more data during each transfer.

LBA/Large Mode (Auto)

Use this item to set the LBA/Large mode to enhance hard disk performance by optimizing the area the hard disk is visited each time.

Block (Multi-Sector Transfer) (Auto)

If the feature is enabled, it will enhance hard disk performance by reading or writing more data during each transfer.

PIO Mode (Auto)

Use this item to set the PIO mode to enhance hard disk performance by optimizing the hard disk timing.

DMA Mode (Auto)

DMA capability allows user to improve the transfer-speed and data-integrity for compatible IDE devices.

S.M.A.R.T. (Auto)

The S.M.A.R.T. (Self-Monitoring, Analysis and Reporting Technology) system is a diagnostics technology that monitors and predicts device performance. S.M.A.R.T. software resides on both the disk drive and the host computer.

32Bit Data Transfer (Enabled)

Use this item to enable or disable 32Bit Data Transfer.

Press <Esc> to return to the Standard CMOS Setup page.

IDE BusMaster (Enabled)

This item enables or disables the DMA under DOS mode. We recommend you to leave this item at the default value.

Press <Esc> to return to the main menu setting page.

Advanced Setup

This page sets up more advanced information about your system. Handle this page with caution. Any changes can affect the operation of your computer.

CMOS Setup Utility - Copyright (C) 1985-2008, American Megatrends, Inc.
Advanced Setup

| | | |
|------------------------------|-----------------|---|
| Thermal Management | Enabled | Help Item |
| TM Status | TM1/TM2 | |
| Limit CPUID MaxVal | Disabled | |
| Enhanced Halt (C1E) | Enabled | For the processor its CPUTD belows 0F14h. TM2 only can be enable under below settings. |
| Intel XD Bit | Disabled | 1.Freq.>=3.6GHz FSB800 |
| Intel EIST | Enabled | 2.Freq.>=2.8GHz FSB533 |
| Intel Virtualization Technol | Enabled | |
| Quick Power on Self Test | Enabled | |
| Boot Up Numlock Status | On | |
| APIC Mode | Enabled | |
| 1st Boot Device | Hard Disk Drive | |
| 2nd Boot Device | CD/DVD | |
| 3rd Boot Device | Removable Dev. | |
| ► Hard Disk Drives | Press Enter | |
| Boot Other Device | Yes | |
| ECS eJFFY Function | Disabled | |

↑↓ → ←: Move Enter: Select +/-: Value F10: Save ESC: Exit
F1: General Help F9: Load Default Settings

Thermal Management (Enabled/TM1/TM2)

This item displays CPU's temperature and enables you to set a safe temperature to Prescott CPU.

Limit CPUID MaxVal (Disabled)

This item can support Prescott CPUs for old OS. Users please note that under NT 4.0, it must be set "Enabled", while under WinXP, it must be set "Disabled".

Enhanced Halt (C1E) (Enabled)

This item enables or disables enhanced halt (C1E).

Intel XD Bit (Disabled)

This item allows users to enable or disable the Intel XD bit.

Intel EIST (Enabled)

This item allows users to enable or disable the EIST (Enhanced Intel SpeedStep technology).

Intel Virtualization Technol (Enabled)

Hardware Virtualization Technology enables processor feature for running multiple simultaneous Virtual Machines allowing specialized software applications to run in full isolation of each other.

Quick Power on Self Test (Enabled)

Enable this item to shorten the power on testing (POST) and have your system start up faster. You might like to enable this item after you are confident that your system hardware is operating smoothly.

Boot Up Numlock Status (On)

This item defines if the keyboard Num Lock key is active when your system is started.

Using BIOS

APIC Mode (Enabled)

This item allows you to enable or disable the APCI (Advanced Programmable Interrupt Controller) mode. APIC provides symmetric multi-processing (SMP) for systems, allowing support for up to 60 processors.

1st/2nd/3rd Boot Device (Hard Disk Drive/CD/DVD/Removable Dev.)

Use this item to determine the device order the computer used to look for an operating system to load at start-up time. The devices showed here will be different depending on the exact devices installed on your motherboard.

► Hard Disk Drives (Press Enter)

Scroll to this item and press <Enter> to view the following screen:

CMOS Setup Utility - Copyright (C) 1985-2008, American Megatrends, Inc.
Hard Disk Drives

| Hard Disk Drives | | Help Item |
|------------------|----------------|---|
| 1st Drive | MAXTOR 6L060J3 | Specifies the boot sequence from the available devices. |
| | | |

↑↓ → ←: Move Enter: Select +/-: Value F10: Save ESC: Exit
F1: General Help F9: Load Default Settings

Press <Esc> to return to the Advanced Setup page.

Boot Other Device (Yes)

When enabled, the system searches all other possible locations for an operating system if it fails to find one in the devices specified under the First, Second and Third boot devices.

ECS eJIFFY Function (Disabled)

Use this item to enable or disable the ECS eJIFFY Function. eJIFFY is ECS unique software program for the quick access to the internet without entering O.S. Please refer to Chapter 5 to know more about eJIFFY.

Press <Esc> to return to the main menu setting page.

Advanced Chipset Setup

This page sets up more advanced information about your system. Handle this page with caution. Any changes can affect the operation of your computer.

CMOS Setup Utility - Copyright (C) 1985-2008, American Megatrends, Inc.
Advanced Chipset Setup

| | | |
|------------------------------|---------|-----------|
| DRAM Frequency | Auto | Help Item |
| Configure DRAM Timing by SPD | Enabled | |
| Pre-allocated share mem | 64MB | |
| DVMT Memory | 256MB | |
| Memory Remap Feature | Enabled | |
| HPET | Enabled | |
| | | Options |
| | | Auto |
| | | 667 MHz |
| | | 800 MHz |

↑↓ → ←: Move Enter: Select +/-: Value F10: Save ESC: Exit
F1: General Help F9: Load Default Settings

DRAM Frequency (Auto)

This item enables users to adjust the DRAM frequency. The default setting is auto and we recommend users leave the setting unchanged. Modify it at will may cause the system to be unstable.

Configure DRAM Timing by SPD (Enabled)

When this item is set to enable, the DDR timing is configured using SPD. SPD (Serial Presence Detect) is located on the memory modules, BIOS reads information coded in SPD during system boot up.

Pre-allocated share mem (64MB)

This item is used to choose the pre-allocated Graphics VGA memory size when IGD (Internal Graphics Device) is enabled.

DVMT Memory (256MB)

When set to Fixed Mode, the graphics driver will reserve a fixed portion of the system memory as graphics memory, according to system and graphics requirements.

Memory Remap Feature (Enabled)

This item allows you to remap the overlapped PCI memory above the total physical memory if you have a 64 bit OS and 8 GB of RAM.

HPET (Enabled)

This item enables or disables HPET (High Precision Event Timer) support.

Press <Esc> to return to the main menu setting page.

Integrated Peripherals

This page sets up some parameters for peripheral devices connected to the system.
CMOS Setup Utility - Copyright (C) 1985-2008, American Megatrends, Inc.
Integrated Peripherals

| | | |
|--------------------------|----------|------------|
| Onboard SATA Mode | Enhanced | Help Item |
| Onboard LAN Function | Enabled | |
| Onboard LAN Boot ROM | Disabled | |
| Onboard AUDIO Function | Enabled | Options |
| Serial Port1 Address | 3F8&IRQ4 | Disabled |
| USB Functions | Enabled | Compatible |
| Legacy USB Support | Enabled | Enhanced |
| On Chip SATA2 Controller | Enabled | |

↑↓ → ←: Move Enter: Select +/-: Value F10: Save ESC: Exit
F1: General Help F9: Load Default Settings

Onboard SATA Mode (Enhanced)

Use this item to select the mode of the Serial ATA.

OnBoard LAN Function (Enabled)

Use this item to enable or disable the onboard LAN function.

OnBoard LAN Boot ROM (Disabled)

Use this item to enable or disable the booting from the onboard LAN or a network add-in card with a remote boot ROM installed.

OnBoard AUDIO Function (Enabled)

Use this item to enable or disable the onboard Audio function.

Serial Port1 Address (3F8/IRQ4)

Use this item to enable or disable the onboard COM1 serial port, and to assign a port address.

USB Functions (Enabled)

Use this item to enable or disable the USB function.

Legacy USB Support (Enabled)

Use this item to enable or disable support for legacy USB devices. Setting to Auto allows the system to detect the presence of USB device at startup. If detected, the USB controller legacy mode is enabled. If no USB device is detected, the legacy USB support is disabled.

On Chip SATA2 Controller (Enabled)

This item allows you to enable or disable the on chip SATA2 controller.

Press <Esc> to return to the main menu setting page.

Power Management Setup

This page sets up some parameters for system power management operation.

CMOS Setup Utility - Copyright (C) 1985-2008, American Megatrends, Inc.
Power Management Setup

| | | |
|------------------------------|-------------|--|
| ACPI Suspend Type | S3 (STR) | Help Item |
| Soft-off by PWR-BTTN | Instant Off | Select the ACPI state used for System Suspend. |
| PWRON After PWR-Fail | Power Off | |
| Resume by Ring | Disabled | |
| Resume by PCI/ PCI-E/Lan PME | Disabled | |
| Resume by USB (S3) | Disabled | |
| Resume By PS2 KB (S3) | Disabled | |
| Resume By PS2 MS (S3) | Disabled | |
| Resume on RTC Alarm | Disabled | |

↑↓ → ←: Move Enter: Select +/-: Value F10: Save ESC: Exit
F1: General Help F9: Load Default Settings

ACPI Suspend Type (S3(STR))

Use this item to define how your system suspends. In the default, S3, the suspend mode is a suspend to RAM, i.e., the system shuts down with the exception of a refresh current to the system memory.

Soft-Off By PWR-BTTN (Instant Off)

Under ACPI (Advanced Configuration and Power management Interface) you can create a software power down. In a software power down, the system can be resumed by Wake Up Alarms. This item lets you install a software power down that is controlled by the power button on your system. If the item is set to Instant-Off, then the power button causes a software power down. If the item is set to Delay 4 Sec, then you have to hold the power button down for four seconds to cause a software power down.

PWRON After PWR-Fail (Power Off)

This item enables your computer to automatically restart or return to its operating status.

Resume by Ring (Disabled)

An input signal on the serial Ring Indicator (RI) line (in other words, an incoming call on the modem) awakens the system from a soft off state.

Resume by PCI/PCI-E/Lan PME (Disabled)

These items specify whether the system will be awakened from power saving modes when activity or input signal of the specified hardware peripheral or component is detected.

Resume by USB (S3) (Disabled)

This item allows users to enable or disable the USB device Wake-up from S3 mode.

Resume By PS2 KB (S3) (Disabled)

Use this item to allow keyboard activity to awaken the system from power saving mode.

Using BIOS

Resume By PS2 MS (S3) (Disabled)

This item enables or disables you to allow mouse activity to awaken the system from power saving mode.

Resume on RTC Alarm (Disabled)

The system can be turned off with a software command. If you enable this item, the system can automatically resume at a fixed time based on the system's RTC (realtime clock). Use the items below this one to set the date and time of the wake-up alarm. You must use an ATX power supply in order to use this feature.

Press <Esc> to return to the main menu setting page.

PCI / PnP Configuration

This page sets up some parameters for devices installed on the PCI bus and those utilizing the system plug and play capability.

CMOS Setup Utility - Copyright (C) 1985-2008, American Megatrends, Inc.
PCI / PnP Configuration

| | | |
|--------------------|-----|---|
| Init Display First | PCI | Help Item |
| | | Select which graphics controller to use as the primary boot device. |

↑↓ → ← : Move Enter : Select +/- : Value F10: Save ESC: Exit
F1: General Help F9: Load Default Settings

Init Display First (PCI)

Use this item to select which graphics controller to use as the primary boot devices.

Press <Esc> to return to the main menu setting page.

PC Health Status

On motherboards support hardware monitoring, this item lets you monitor the parameters for critical voltages, temperatures and fan speeds.

CMOS Setup Utility - Copyright (C) 1985-2008, American Megatrends, Inc.
PC Health Status

| -- System Hardware Monitor -- | | Help Item |
|-------------------------------|-------------|-----------|
| ▶ Smart Fan Function | Press Enter | |
| Shutdown Temperature | Disabled | |
| CPU Temperature | : 31°C/87°F | |
| System Temperature | : 22°C/71°F | |
| CPU FAN Speed | : 3770 RPM | |
| SYS FAN Speed | : N/A | |
| CPU Core | : 1.248V | |
| VDIMM | : 1.920V | |

↑↓ → ←: Move Enter: Select +/-: Value F10: Save ESC: Exit
F1: General Help F9: Load Default Settings

▶ Smart Fan Function

Scroll to this item and press <Enter> to view the following screen:

CMOS Setup Utility - Copyright (C) 1985-2008, American Megatrends, Inc.
Smart Fan Function

| | | Help Item |
|-----------------------|----------|-----------|
| CPU SMART FAN Control | Disabled | |
| SYS SMART FAN Control | Disabled | |
| | | Options |
| | | Disabled |
| | | Enabled |

↑↓ → ←: Move Enter: Select +/-: Value F10: Save ESC: Exit
F1: General Help F9: Load Default Settings

CPU/SYS SMART FAN Control (Disabled)

These items enable you to define the CPU/System temperature by smartly adjusting the CPU/System fan. When it is set at certain temperature, the CPU/SYS Fan PWM value will change accordingly.



ECS supports the latest PECI host technology. While using Wolfdale or Yorkfield CPU, the original images of the BIOS item “PC Health Status” and “Smart FAN Function” will be replaced by PECI mode and negative number. (The max data from PECI is zero.)

CMOS Setup Utility - Copyright (C) 1985-2008, American Megatrends, Inc.
PC Health Status

| Hardware Health Event Monitoring | | Help Item |
|----------------------------------|-------------|-----------|
| ► Smart Fan Function | Press Enter | |
| System Temperature | 33°C/91°F | |
| CPU Fan Speed: | 2537 RPM | |
| SYS FAN Speed: | 0 RPM | |
| CPU Vcore: | 1.280V | |
| VDIMM: | 1.840V | |
| -- PECI Mode -- | | |
| Offset to TCC Activation Temp.: | -20 | |

↑↓ → ←: Move Enter: Select +/-: Value F10: Save ESC: Exit
F1: General Help F9: Load Default Settings

CMOS Setup Utility - Copyright (C) 1985-2008, American Megatrends, Inc.
Smart Fan Function

| SMART Fan Control | | Help Item |
|-----------------------------|----------|-----------|
| SMART Fan start PWM value | 28 | |
| SMART Fan start Offset (-) | 30 | |
| CPU DeltaT | +3 | |
| Fan1 Slope PWM value/1 Unit | 5 | |
| Fan1 Full Speed Offset (-) | 10 | |
| SMART Fan2 Control | Disabled | |
| | | Options |
| | | Disabled |
| | | Enabled |

↑↓ → ←: Move Enter: Select +/-: Value F10: Save ESC: Exit
F1: General Help F9: Load Default Settings

Press <Esc> to return to the PC Health Status page.

Shutdown Temperature (Disabled)

Enable you to set the maximum temperature the system can reach before powering down.

System Component Characteristics

These items display the monitoring of the overall inboard hardware health events, such as System & CPU temperature, CPU & DIMM voltage, CPU & system fan speed,...etc.

- CPU/System Temperature
- CPU/SYS FAN Speed
- CPU Core
- VDIMM

Press <Esc> to return to the main menu setting page.

Frequency/Voltage Control

This page enables you to set the clock speed and system bus for your system. The clock speed and system bus are determined by the kind of processor you have installed in your system.

CMOS Setup Utility - Copyright (C) 1985-2008, American Megatrends, Inc.
Frequency/Voltage Control

| | | |
|---|--|---|
| Manufacturer : Intel Ratio Actual Value: 9 CPU Frequency Setting : 333MHz CPU Over-clocking Func.: Disabled Auto Detect DIMM/PCI Clk Enabled Spread Spectrum Enabled Memory Voltage 1.90V | | Help Item Options Disabled Enabled |
|---|--|---|

↑↓ → ← : Move Enter : Select +/- : Value F10: Save ESC: Exit
F1: General Help F9: Load Default Settings

Manufacturer (Intel)

This item displays the information of current manufacturer of the CPU installed in your computer.

Ratio Actual Value (9)

These items show the locked ratio status and the actual ratio of the CPU installed in your System.

CPU Frequency Setting (333MHz)

This item indicates the current CPU frequency. Users can not make any change to this item. Please noted that the frequency will be varied with different CPU.

CPU Over-clocking Func. (Disabled)

This item decides the CPU over-clocking function/frequency installed in your system. If the over-clocking fails, please turn off the system power. And then, hold the PageUp key (similar to the Clear CMOS function) and turn on the power, the BIOS will recover the safe default.

Auto Detect DIMM/PCI Clk (Enabled)

When this item is enabled, BIOS will disable the clock signal of free DIMM/PCI slots.

Spread Spectrum (Enabled)

If you enable spread spectrum, it can significantly reduce the EMI (Electro-Magnetic Interference) generated by the system.

Memory Voltage (1.90V)

This item allows users to adjust the DDR memory voltage.

Press <Esc> to return to the main menu setting page.

Load Default Settings

This option opens a dialog box to ask if you are sure to install optimized defaults or not. You select [OK], and then <Enter>, the Setup Utility loads all default values; or select [Cancel], and then <Enter>, the Setup Utility does not load default values.

Supervisor Password

This page helps you install or change a password.

CMOS Setup Utility - Copyright (C) 1985-2008, American Megatrends, Inc.
Supervisor Password

| | |
|---|---------------------------------|
| Supervisor Password :Not Installed | Help Item |
| Change Supervisor Password <input type="button" value="Press Enter"/> | Install or Change the password. |

↑↓ → ← : Move Enter : Select +/- : Value F10: Save ESC: Exit
F1: General Help F9: Load Default Settings

Supervisor Password (Not Installed)

This item indicates whether a supervisor password has been set. If the password has been installed, *Installed* displays. If not, *Not Installed* displays.

Change Supervisor Password (Press Enter)

You can select this option and press <Enter> to access the sub menu. You can use the sub menu to change the supervisor password.

Press <Esc> to return to the main menu setting page.

User Password

This page helps you install or change a password.

CMOS Setup Utility - Copyright (C) 1985-2008, American Megatrends, Inc.
User Password

| | | |
|-------------------------------|-------------|---------------------------------|
| User Password : Not Installed | | Help item |
| Change User Password | Press Enter | Install or Change the password. |

↑↓ → ←: Move Enter: Select +/-: Value F10: Save ESC: Exit
F1: General Help F9: Load Default Settings

User Password (Not Installed)

This item indicates whether a user password has been set. If the password has been installed, *Installed* displays. If not, *Not Installed* displays.

Change User Password (Press Enter)

You can select this option and press <Enter> to access the sub menu. You can use the sub menu to change the user password. This item will show if Supervisor Password is set.

Press <Esc> to return to the main menu setting page.

Save & Exit Setup

Highlight this item and press <Enter> to save the changes that you have made in the Setup Utility and exit the Setup Utility. When the Save and Exit dialog box appears, select [OK] to save and exit, or select [Cancel] to return to the main menu.

Exit Without Saving

Highlight this item and press <Enter> to discard any changes that you have made in the Setup Utility and exit the Setup Utility. When the Exit Without Saving dialog box appears, select [OK] to discard changes and exit, or select [Cancel] to return to the main menu.



If you have made settings that you do not want to save, use the “Exit Without Saving” item and select [OK] to discard any changes you have made.

Updating the BIOS

You can download and install updated BIOS for this motherboard from the manufacturer's Web site. New BIOS provides support for new peripherals, improvements in performance, or fixes for known bugs. Install new BIOS as follows:

- 1 If your motherboard has a BIOS protection jumper, change the setting to allow BIOS flashing.
- 2 If your motherboard has an item called Firmware Write Protect in Advanced BIOS features, disable it. (Firmware Write Protect prevents BIOS from being overwritten.)
- 3 Create a bootable system disk. (Refer to Windows online help for information on creating a bootable system disk.)
- 4 Download the Flash Utility and new BIOS file from the manufacturer's Web site. Copy these files to the bootable device.
- 5 Turn off your computer and insert the bootable device in your computer. (You might need to run the Setup Utility and change the boot priority items on the Advanced BIOS Features Setup page, to force your computer to boot from the bootable device first.)
- 6 At the C:\ or A:\ prompt, type the Flash Utility program name and the file name of the new bios and then press <Enter>. Example: AMINF340.EXE 040706.ROM
- 7 When the installation is complete, remove the bootable device from the computer and restart your computer. If your motherboard has a Flash BIOS jumper, reset the jumper to protect the newly installed BIOS from being overwritten. The computer will restart automatically.

This concludes Chapter 3. Refer to the next chapter for information on the software supplied with the motherboard.

Chapter 4

Using the Motherboard Software

About the Software CD-ROM/DVD-ROM

The support software CD-ROM/DVD-ROM that is included in the motherboard package contains all the drivers and utility programs needed to properly run the bundled products. Below you can find a brief description of each software program, and the location for your motherboard version. More information on some programs is available in a README file, located in the same directory as the software. Before installing any software, always inspect the folder for files named README.TXT or something similar. These files may contain important information that is not included in this manual.



1. Never try to install all software from folder that is not specified for use with your motherboard.
2. The notice of Intel HD audio installation (optional): The Intel High Definition audio functionality unexpectedly quits working in Windows Server 2003 Service Pack 1 or Windows XP Professional x64 Edition. Users need to download and install the update packages from the Microsoft Download Center “before” installing HD audio driver bundled in the Driver disk. Please log on to <http://support.microsoft.com/default.aspx?scid=kb;en-us;901105#appliedto> for more information.

Auto-installing under Windows XP/Vista/7

The Auto-install CD-ROM/DVD-ROM makes it easy for you to install the drivers and software for your motherboard.



If the Auto-install CD-ROM/DVD-ROM does not work on your system, you can still install drivers through the file manager for your OS (for example, Windows Explorer). Refer to the Utility Folder Installation Notes later in this chapter.

The support software CD-ROM/DVD-ROM disc loads automatically under Windows XP/Vista/7. When you insert the CD-ROM/DVD-ROM disc in the CD-ROM/DVD-ROM drive, the autorun feature will automatically bring up the install screen. The screen has three buttons on it, Setup, Browse CD and Exit.



If the opening screen does not appear; double-click the file “setup.exe” in the root directory.

Using the Motherboard Software

Drivers Tab

| | |
|------------------|--|
| Setup | Click the Setup button to run the software installation program. Select from the menu which software you want to install. |
| Browse CD | <p>The Browse CD button is the standard Windows command that allows you to open Windows Explorer and show the contents of the support disk.</p> <p>Before installing the software from Windows Explorer, look for a file named README.TXT or something similar. This file may contain important information to help you install the software correctly.</p> <p>Some software is installed in separate folders for different operating systems.</p> <p>In installing the software, execute a file named SETUP.EXE by double-clicking the file and then following the instructions on the screen.</p> |
| Exit | The EXIT button closes the Auto Setup window. |

Utilities Tab

Lists the software utilities that are available on the disk.

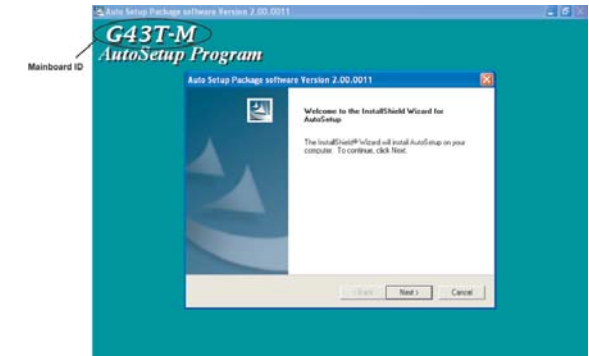
Information Tab

Displays the path for all software and drivers available on the disk.

Running Setup

Follow these instructions to install device drivers and software for the motherboard:

1. Click **Setup**. The installation program begins:

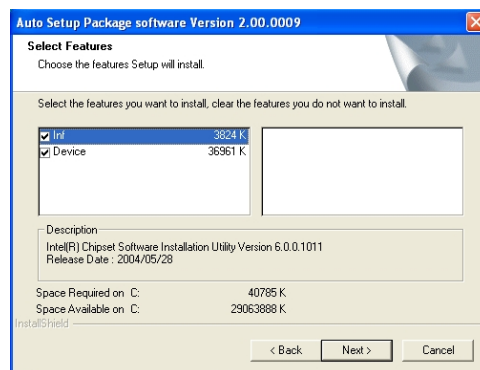


The following screens are examples only. The screens and driver lists will be different according to the motherboard you are installing.

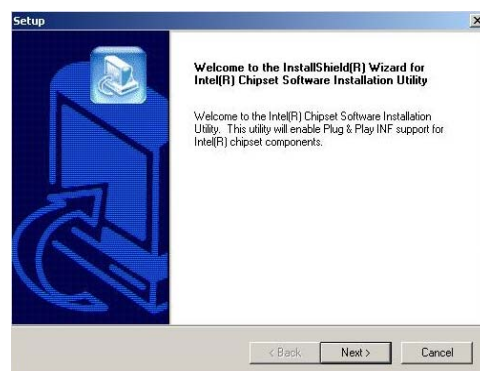
The motherboard identification is located in the upper left-hand corner.

Using the Motherboard Software

2. Click **Next**. The following screen appears:



3. Check the box next to the items you want to install. The default options are recommended.
4. Click **Next** run the Installation Wizard. An item installation screen appears:



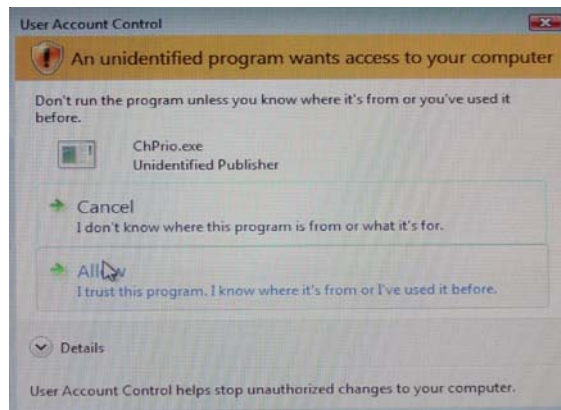
5. Follow the instructions on the screen to install the items.



Drivers and software are automatically installed in sequence. Follow the onscreen instructions, confirm commands and allow the computer to restart a few times to complete the installation.



Windows Vista/7 will appear below UAC (User Account Control) message after the system restart. You must select “Allow” to install the next driver. Continue this process to complete the drivers installation.



Manual Installation

Insert the disk in the CD-ROM/DVD-ROM drive and locate the PATH.DOC file in the root directory. This file contains the information needed to locate the drivers for your motherboard.

Look for the chipset and motherboard model; then browse to the directory and path to begin installing the drivers. Most drivers have a setup program (SETUP.EXE) that automatically detects your operating system before installation. Other drivers have the setup program located in the operating system subfolder.

If the driver you want to install does not have a setup program, browse to the operating system subfolder and locate the readme text file (README.TXT or README.DOC) for information on installing the driver or software for your operating system.

Utility Software Reference

All the utility software available from this page is Windows compliant. They are provided only for the convenience of the customer. The following software is furnished under license and may only be used or copied in accordance with the terms of the license.



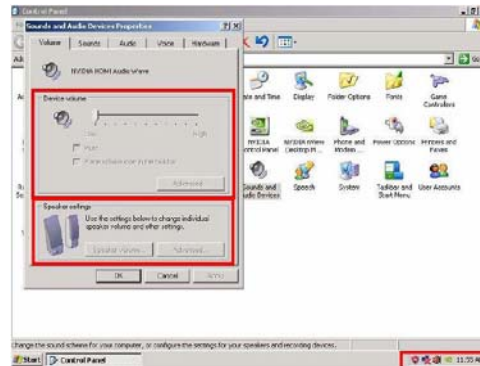
These software(s) are subject to change at anytime without prior notice. Please refer to the support disk for available software.

Using the Motherboard Software

HDMI Audio setting SOP

OS: XP system

1. Control Panel-->Sound and Audio Device Properties



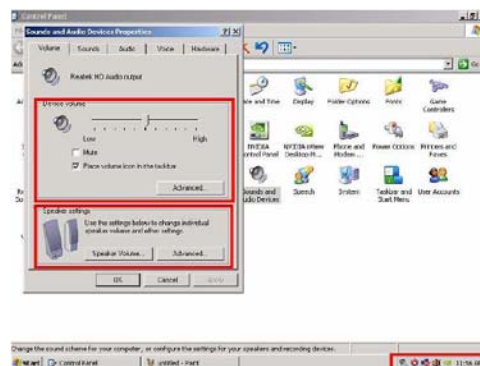
2. a. Audio--> Sound playback--> Default device--> HD Audio Output

b. Audio--> Sound playback--> Default device--> HDMI Audio Output



3. a. User Playback Audio speaker function working

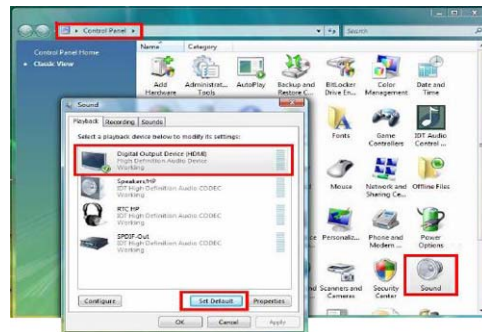
b. User Playback HDMI speaker function working



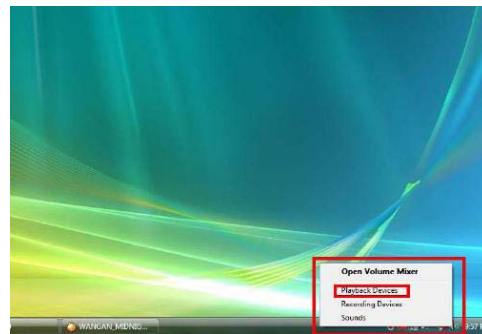
Using the Motherboard Software

OS: Vista system

Control Panel--> Sound--> Sound--> Digital Output Device (HDMI) --> Set Default

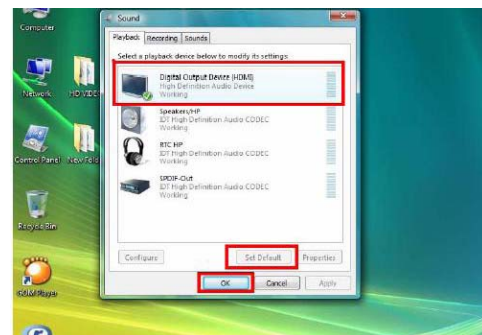


1. Volume --> Playback



2. Digital Output Device (HDMI) --> Set Default --> OK

User HDMI Playback function working



Using the Motherboard Software

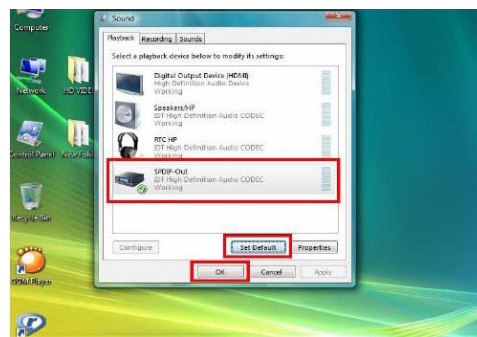
3. Speaker --> Set Default --> OK

User Speaker Playback function working



4. SPDIF-Out --> Set Default --> OK

User SPDIF-Out Playback function working



This concludes chapter 4.

Using the Motherboard Software

Memo

Chapter 5

Setting Up eJIFFY

Introduction

eJIFFY is a fast boot program under Linux. Instead of waiting Windows O.S to start execution, eJIFFY is ready to provide users the instant enjoyment on web browsing, photo review and online chat just within several seconds after boot up.



Note: eJIFFY is ECS *optional* feature utility corresponding to the DVD activation and BIOS setup. Please check the hard copy user's guide or product color-box to see if the model has embodied eJIFFY feature. (eJIFFY icon on color-box



Version: 5.0

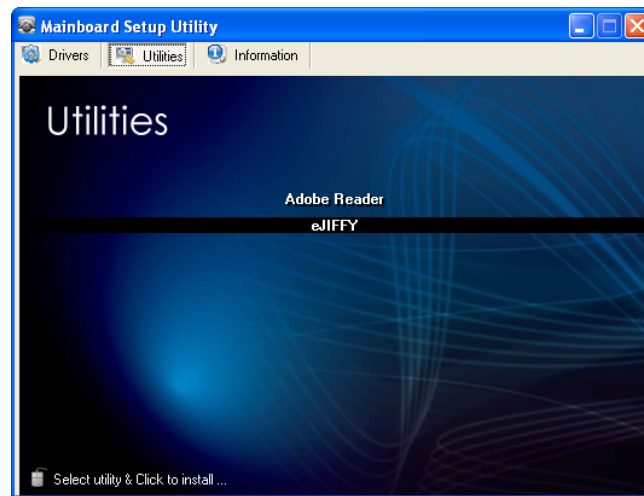
Setting Up eJIFFY

Installation and BIOS Setup

DVD Activation

Finish the DVD utility setup, and then set the BIOS to complete eJIFFY activation.

1. Insert ECS software utility DVD and enter below “Utilities” screen. Click eJIFFY feature item to install.

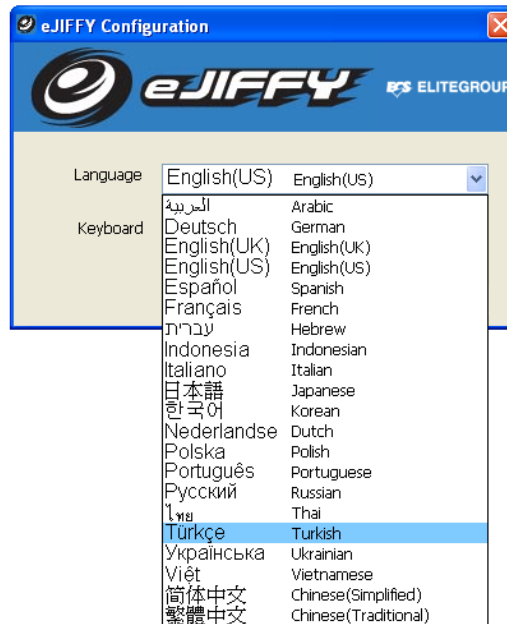


2. Follow the onscreen instructions to finish eJIFFY setup.



Setting Up eJIFFY

3. After setting up eJIFFY under Windows, you can switch eJIFFY display/keyboard language from English to your local language. The changes will be applied after rebooting.



Note: The keyboard language selection list offers several more regional keyboard setups to switch with the default English typing. Please refer to the usage FAQ for more tips.

Setting Up eJIFFY

4. Restart your computer after eJIFFY installation. Press or click the BIOS Setup button on the post screen to enter the BIOS setup page after boot up.



5. And then enter the *Advanced Setup* page to enable the item *ECS eJIFFY Function*. Press F10 to save the configuration and exit. Restart your computer.

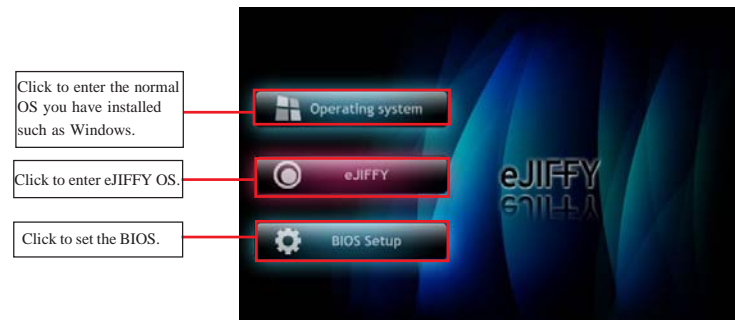


Note: 1. eJIFFY is available in SATA/IDE/AHCI mode. It does not support RAID configuration and the onboard 34-pin floppy drives.
2. Please refer to ECS website for new eJIFFY application updates.

Setting Up eJIFFY

Entering eJIFFY

The post screen appears within several seconds after boot up and it has three buttons on it, Operating system, eJIFFY and BIOS Setup.




















If you click eJIFFY, the following screen will appear. And If you make no choice it will enter the normal OS automatically after ten seconds.



Setting Up eJIFFY

Feature Icons

The following illustration shows the main feature icons that eJIFFY provides on the menu.

| | | | | | | | | |
|---|---|---|---|---|---|---|--|------------------------------|
|  |  |  |  |  |  |  |  | Fri Thu Oct 29 1:24 PM |
|  | <i>eWeb: Firefox for web browsing/webmail and watching flash video.</i> | | | | | | | |
|  | <i>ePix: Photo viewing.</i> | | | | | | | |
|  | <i>ePal: On-line chat tool to use the most popular IMs in the world. (MSN, ICQ, AIM, etc.)</i> | | | | | | | |
|  | <i>Shows ePal on-line connection status.</i> | | | | | | | |
|  | <i>Shut Down/Restart: Ends your session and turns off the computer./Ends your session and restart the computer..</i> | | | | | | | |
|  | <i>Click once to connect the storage disk to your computer. Click for the second time to remove your storage disk safely. (please refer to the FAQ for more usage information.)</i> | | | | | | | |
|  | <i>Shows the network connection status.</i> | | | | | | | |
|  | <i>Language Control Panel</i> | | | | | | | |
|  | <i>Switch Keyboard Languages</i> | | | | | | | |


Setting Up eJIFFY

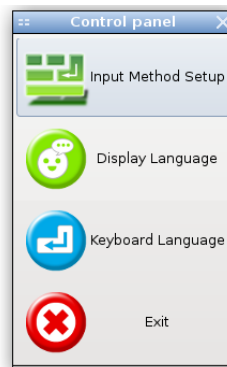
Usage FAQ



Language Control Panel: Besides setting English as the default interface, eJIFFY offers multi-language displays and keyboard settings for language-switch. Open the language control panel to select a preferable language setting.

Keyboard Language Setup

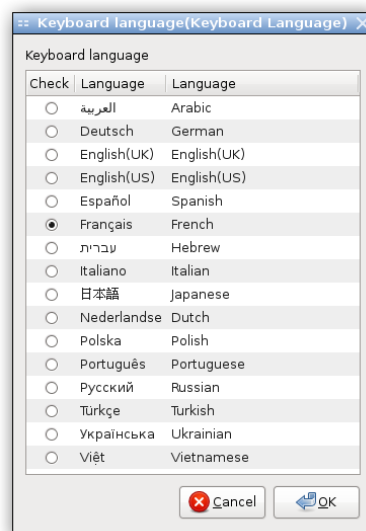
Step1. Click  to open the language control panel.



Step 2: Click “Keyboard Language” icon  to open the keyboard selection


list, which offers several regional keyboard settings besides default English keyboard.

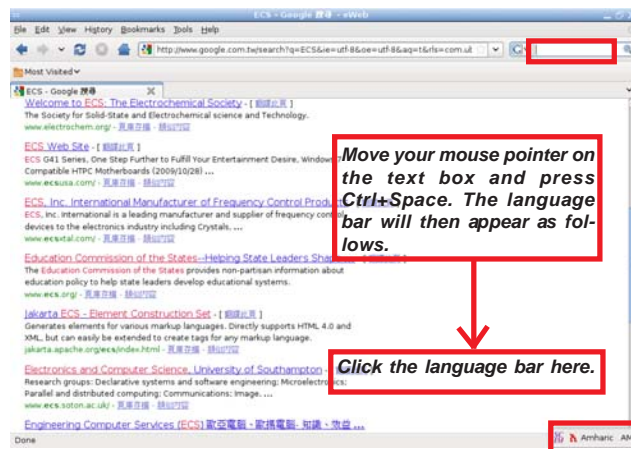
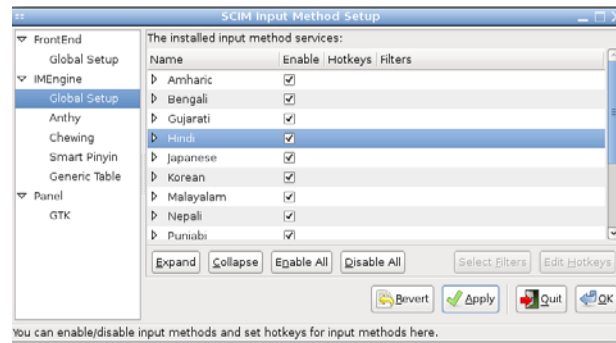
Step 3: Click the selected keyboard language (e.g. French) and press “OK”.



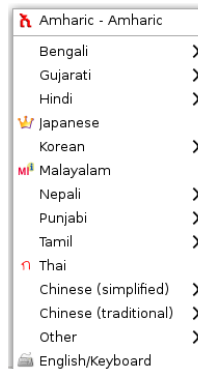
Setting Up eJIFFY



Click  to enable all possible language inputs you want to apply, and click “Apply”:



Select your desired language

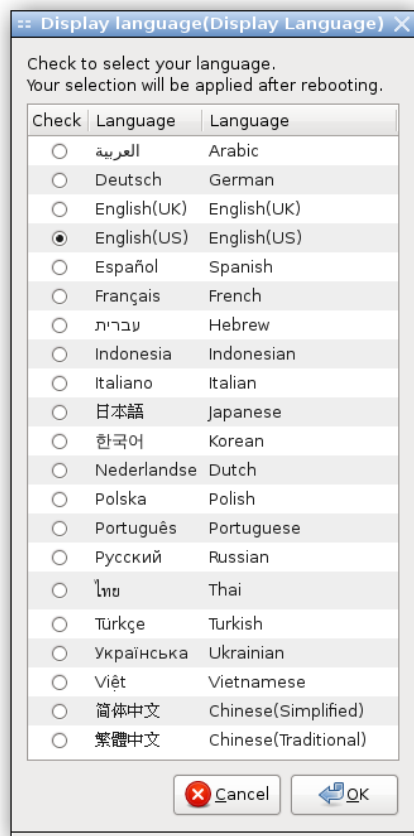


Setting Up eJIFFY

How to change display language?

Open the Language Control Panel and click  to show the display language

list. Check your desired display language. Your selected display language will be applied after rebooting.



Note: Details about eJIFFY please refer to eJIFFY in disk.

Setting Up eJIFFY

Memo

Chapter 6

Trouble Shooting

Start up problems during assembly

After assembling the PC for the first time you may experience some start up problems. Before calling for technical support or returning for warranty, this chapter may help to address some of the common questions using some basic troubleshooting tips.

a) System does not power up and the fans are not running.

1. Disassemble the PC to remove the VGA adaptor card, DDR memory, LAN, USB and other peripherals including keyboard and mouse. Leave only the motherboard, CPU with CPU cooler and power supply connected. Turn on again to see if the CPU and power supply fans are running.
2. Make sure to remove any unused screws or other metal objects such as screwdrivers from the inside PC case. This is to prevent damage from short circuit.
3. Check the CPU FAN connector is connected to the motherboard.
4. For Intel platforms check the pins on the CPU socket for damage or bent. A bent pin may cause failure to boot and sometimes permanent damage from short circuit.
5. Check the 12V power connector is connected to the motherboard.
6. Check that the 12V power & ATX connectors are fully inserted into the motherboard connectors. Make sure the latches of the cable and connector are locked into place.

b) Power is on, fans are running but there is no display

1. Make sure the monitor is turned on and the monitor cable is properly connected to the PC.
2. Check the VGA adapter card (if applicable) is inserted properly.
3. Listen for beep sounds. If you are using internal PC speaker make sure it is connected.
 - a. continuous 3 short beeps : memory not detected
 - b. 1 long beep and 8 short beeps : VGA not detected

c) The PC suddenly shuts down while booting up.

1. The CPU may experience overheating so it will shutdown to protect itself. Ensure the CPU fan is working properly.
2. From the BIOS setting, try to disable the Smartfan function to let the fan run at default speed. Doing a Load Optimised Default will also disable the Smartfan.

Start up problems after prolong use

After a prolong period of use your PC may experience start up problems again. This may be caused by breakdown of devices connected to the motherboard such as HDD, CPU fan, etc. The following tips may help to revive the PC or identify the cause of failure.

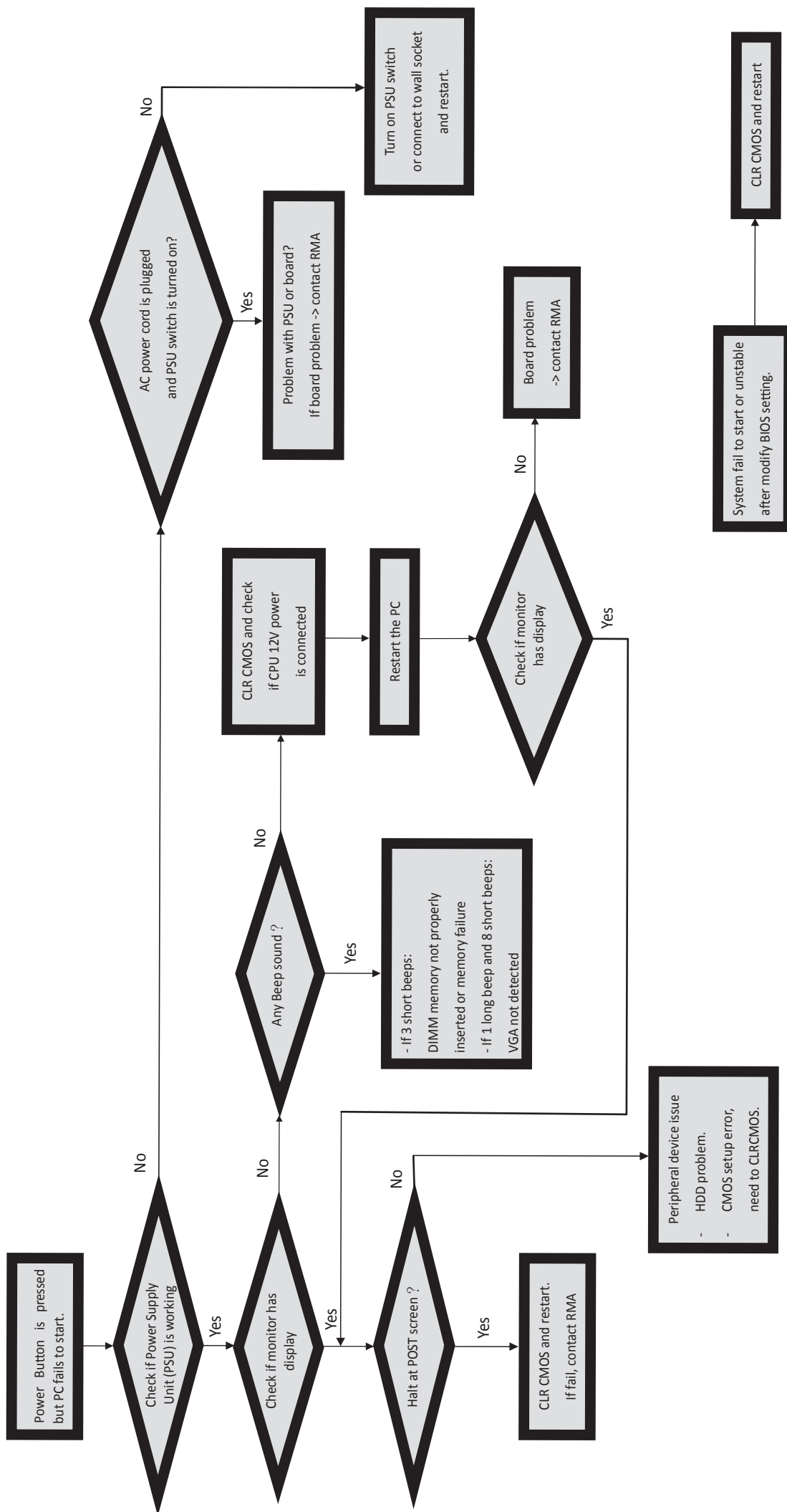
1. Clear the CMOS values using the CLR_CMOS jumper. Refer to CLR_CMOS jumper in Chapter 2 for Checking Jumper Settings in this user manual. When completed, follow up with a Load Optimised Default in the BIOS setup.
2. Check the CPU cooler fan for dust. Long term accumulation of dust will reduce its effectiveness to cool the processor. Clean the cooler or replace a new one if necessary.
3. Check that the 12V power & ATX connectors are fully inserted into the motherboard connectors. Make sure the latches of the cable and connector are locked into place.
4. Remove the hard drive, optical drive or DDR memory to determine which of these component may be at fault.

Maintenance and care tips

Your computer, like any electrical appliance, requires proper care and maintenance. Here are some basic PC care tips to help prolong the life of the motherboard and keep it running as best as it can.

1. Keep your computer in a well ventilated area. Leave some space between the PC and the wall for sufficient airflow.
2. Keep your computer in a cool dry place. Avoid dusty areas, direct sunlight and areas of high moisture content.
3. Routinely clean the CPU cooler fan to remove dust and hair.
4. In places of hot and humid weather you should turn on your computer once every other week to circulate the air and prevent damage from humidity.
5. Add more memory to your computer if possible. This not only speeds up the system but also reduces the loading of your hard drive to prolong its life span.
6. If possible, ensure the power cord has an earth ground pin directly from the wall outlet. This will reduce voltage fluctuation that may damage sensitive devices.

Basic Troubleshooting Flowchart



Memo

Trouble Shooting